



OPEN ACCESS

APPROVED BY
Frontiers Editorial Office,
Frontiers Media SA, Switzerland

*CORRESPONDENCE
Rina Noguchi,
✉ r-noguchi@env.sc.niigata-u.ac.jp

RECEIVED 16 November 2023
ACCEPTED 27 November 2023
PUBLISHED 31 January 2024

CITATION

Noguchi R and Shoji D (2024), Corrigendum:
Extraction of stratigraphic exposures on
visible images using a supervised machine
learning technique.
Front. Earth Sci. 11:1339426.
doi: 10.3389/feart.2023.1339426

COPYRIGHT

© 2024 Noguchi and Shoji. This is an
open-access article distributed under the
terms of the [Creative Commons Attribution
License \(CC BY\)](https://creativecommons.org/licenses/by/4.0/). The use, distribution or
reproduction in other forums is permitted,
provided the original author(s) and the
copyright owner(s) are credited and that the
original publication in this journal is cited, in
accordance with accepted academic practice.
No use, distribution or reproduction is
permitted which does not comply with
these terms.

Corrigendum: Extraction of stratigraphic exposures on visible images using a supervised machine learning technique

Rina Noguchi^{1*} and Daigo Shoji²

¹Faculty of Science, Niigata University, Niigata, Japan, ²Institute of Space and Astronautical Science, Japan Aerospace Exploration Agency, Sagami-hara, Kanagawa, Japan

KEYWORDS

machine learning, stratigraphic exposures, volcanic stratigraphies, autonomous extraction, U-Net, LinkNet

A Corrigendum on

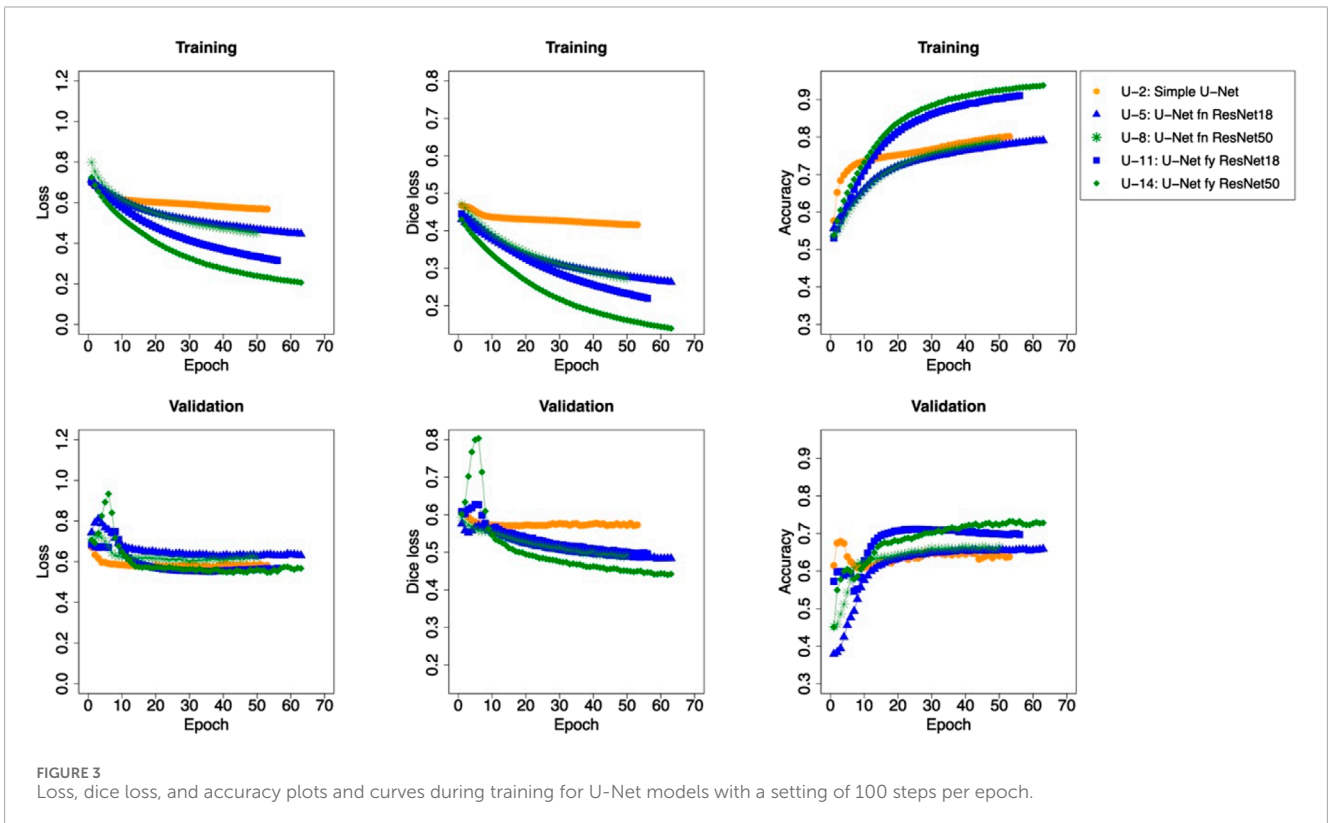
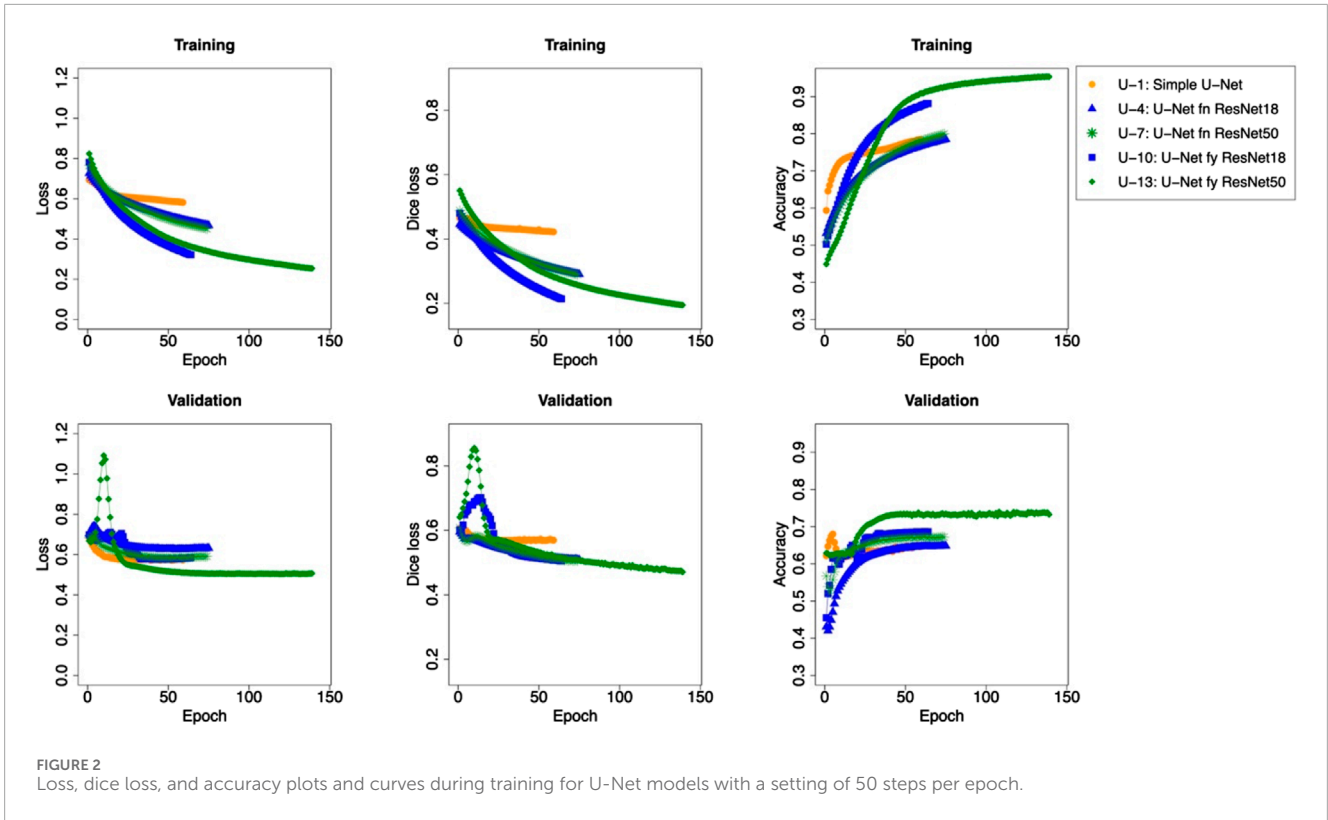
Extraction of stratigraphic exposures on visible images using a supervised machine learning technique

by Noguchi R and Shoji D (2023). *Front. Earth Sci.* 11:1264701. doi: 10.3389/feart.2023.1264701

In the published article, there was an error in the legend for [Figure 2](#) as published. The symbols were attributed to the incorrect IDs. The blue triangle—U-Net fn ResNet18—was described as U-7 but should have been U-4. The green star—U-Net fn ResNet50 - was described as U-13 but should have been U-7. The blue square—U-Net fy ResNet18 was described as U-4 but should have been U-10. The green diamond—U-Net fy ResNet50—was described as U-10 but should have been U-13. The order has been rearranged into the numerical order of the IDs. The correct figure and legend appears below.

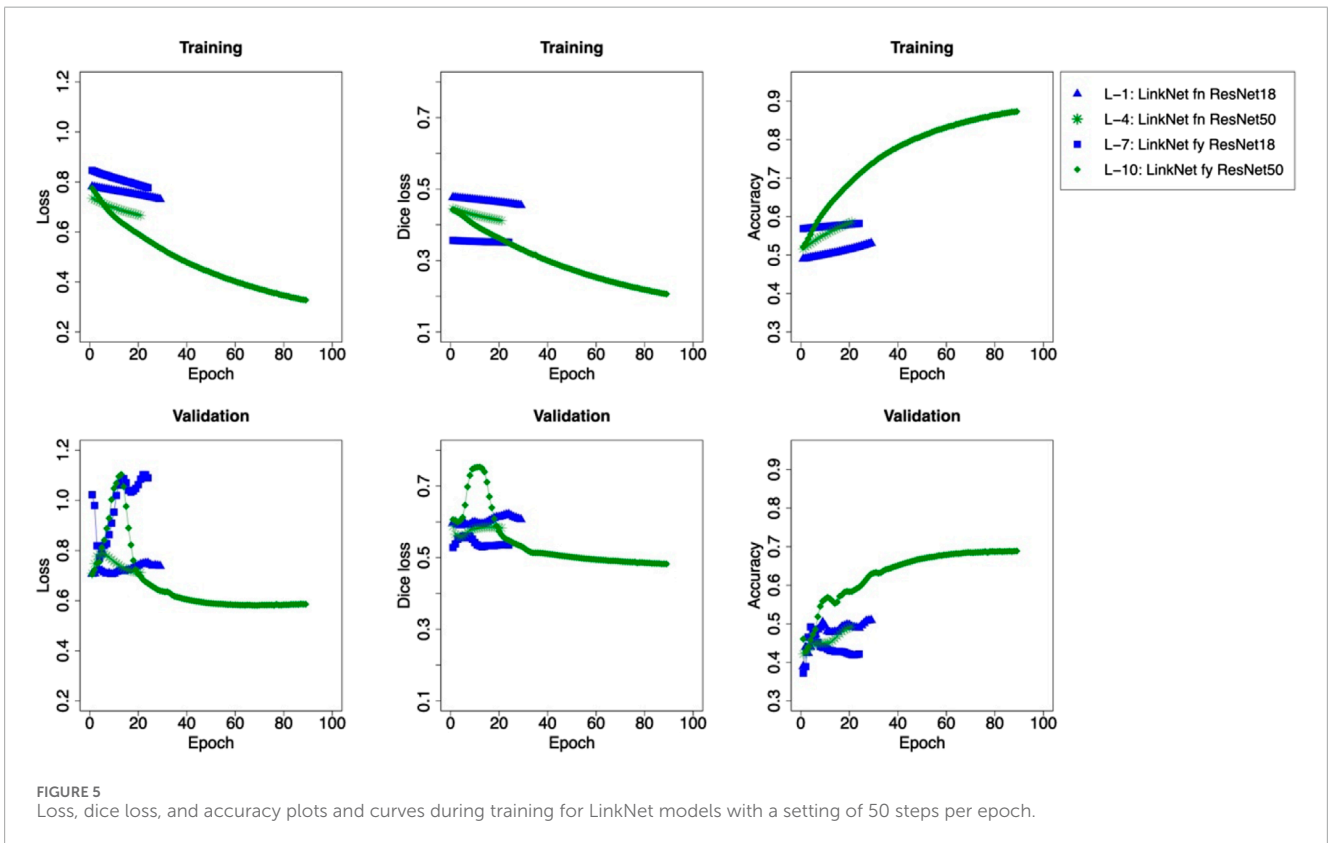
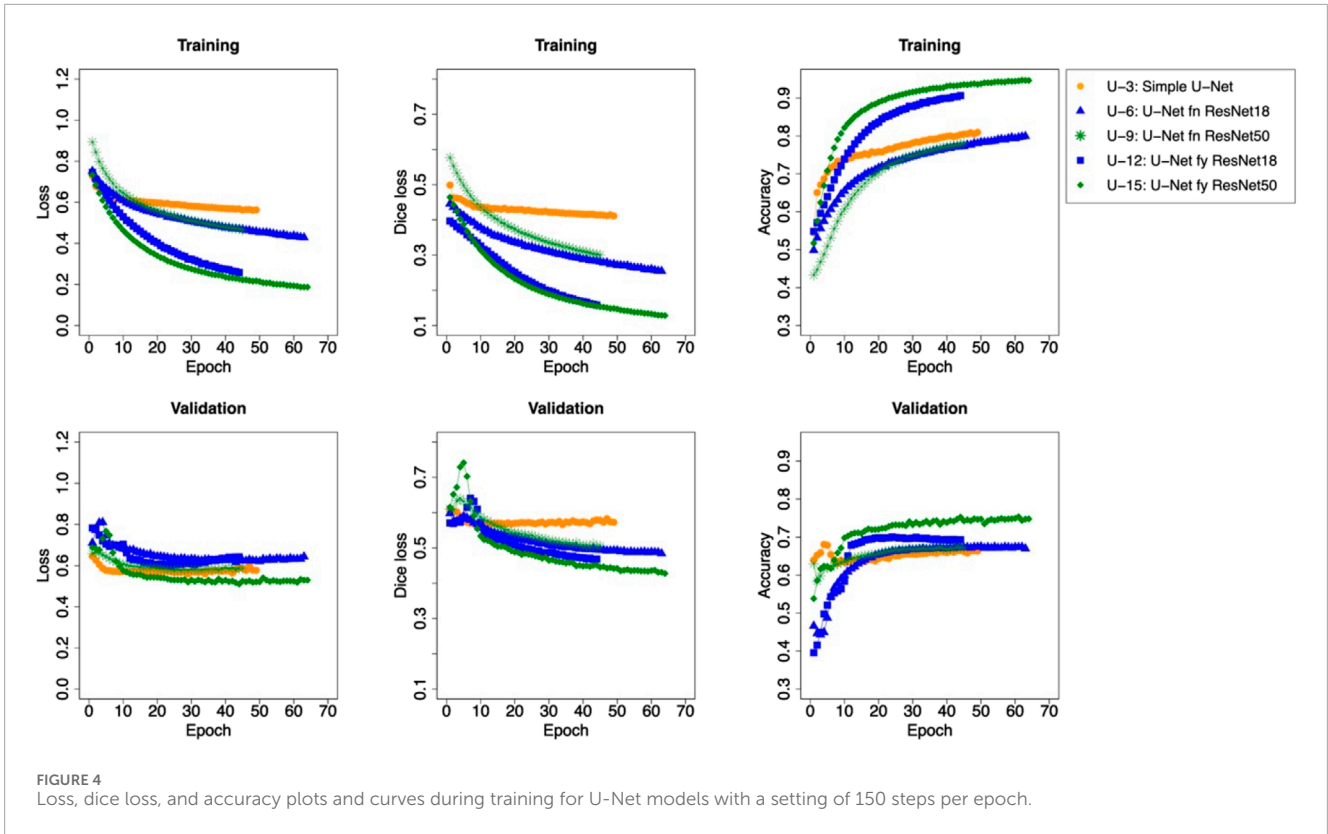
In the published article, there was an error in the legend for [Figure 3](#) as published. The symbols were attributed to the incorrect IDs. The blue triangle—U-Net fn ResNet18—was described as U-8 but should have been U-5. The green star—U-Net fn ResNet50 - was described as U-14 but should have been U-8. The blue square—U-Net fy ResNet18 was described as U-5 but should have been U-11. The green diamond—U-Net fy ResNet50—was described as U-11 but should have been U-14. The order has been rearranged into the numerical order of the IDs. The correct figure and legend appears below.

In the published article, there was an error in the legend for [Figure 4](#) as published. The symbols were attributed to the incorrect IDs. The blue triangle—U-Net fn ResNet18—was described as U-9 but should have been U-6. The green star—U-Net fn ResNet50—was described as U-15 but should have been U-9. The blue square—U-Net fy ResNet18 was described as U-6 but should have been U-12. The green diamond—U-Net fy ResNet50—was described as U-12 but should have been U-15. The order has been rearranged into the numerical order of the IDs. The correct figure and legend appears below.



In the published article, there was an error in the legend for Figure 5 as published. The symbols were attributed to the incorrect IDs. The blue triangle—LinkNet fn ResNet18 - was described as L-4 but should have been L-1. The green star—LinkNet fn ResNet50—was described as L-10 but should have been L-4. The

blue square—LinkNet fy ResNet18 was described as L-1 but should have been L-7. The green diamond—LinkNet fy ResNet50—was described as L-7 but should have been L-10. The order has been rearranged into the numerical order of the IDs. The correct figure and legend appears below.



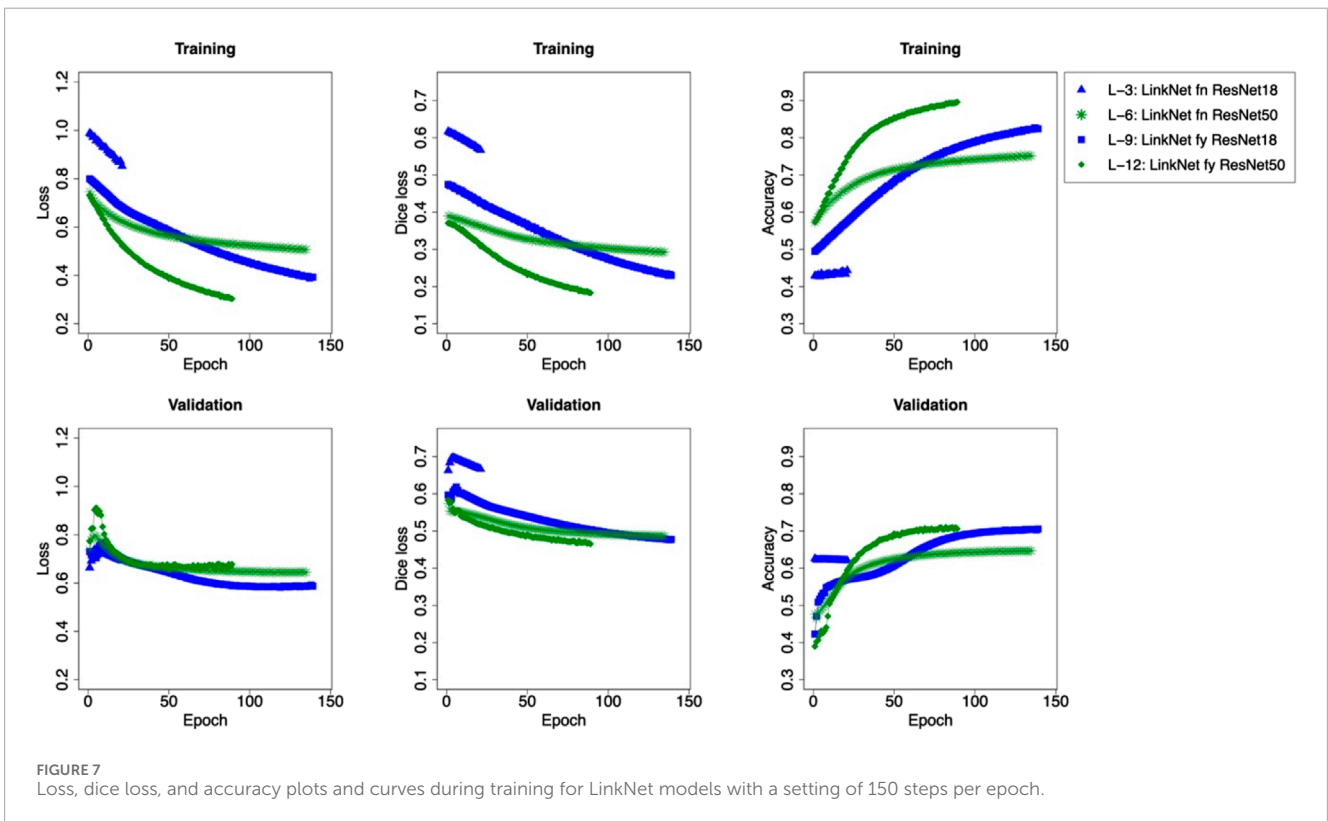
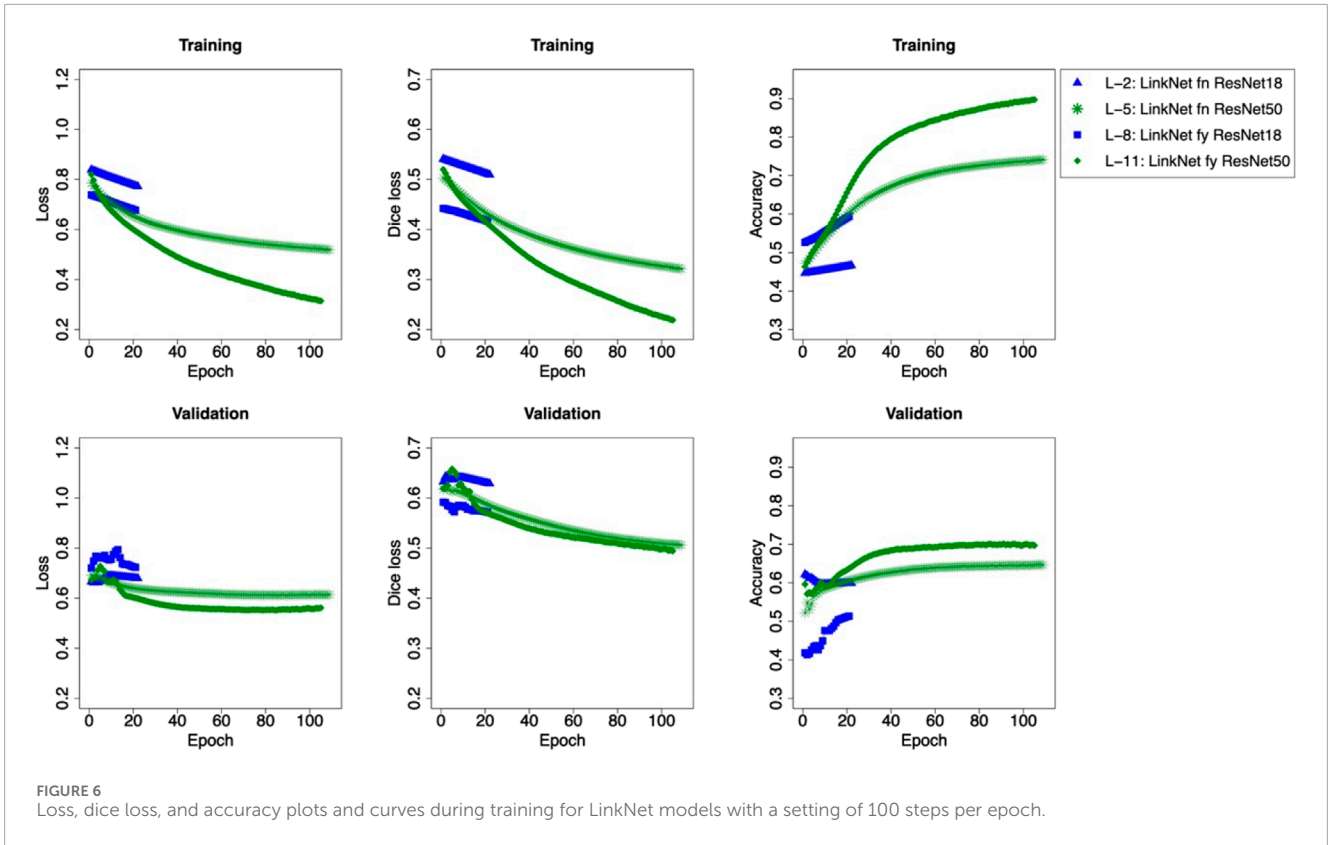


TABLE 1 The loss, dice, and binary accuracy at the end of training in each model.

ID	Model	Fine-tuning	Backbone	Step	Training stopped epoch	Training			Validation			Duration (min)	
						Loss	Dice loss	Accuracy	Loss	Dice loss	Accuracy	Total	Per epoch
U-1	U-Net	No	No	50	58	0.582	0.422	0.785	0.573	0.569	0.646	512	8.83
U-2				100	52	0.568	0.416	0.802	0.582	0.573	0.638	298	5.73
U-3				150	48	0.563	0.411	0.810	0.577	0.573	0.663	282	5.88
U-4		No	Yes (ResNet18)	50	74	0.468	0.290	0.785	0.632	0.509	0.648	90	1.22
U-5				100	62	0.446	0.263	0.791	0.631	0.484	0.659	70	1.13
U-6				150	62	0.428	0.255	0.799	0.644	0.485	0.670	76	1.23
U-7		No	Yes (ResNet50)	50	73	0.450	0.289	0.800	0.591	0.506	0.672	121	1.66
U-8				100	49	0.451	0.273	0.790	0.616	0.493	0.665	78	1.59
U-9				150	44	0.465	0.300	0.781	0.587	0.506	0.671	76	1.73
U-10		Yes	Yes (ResNet18)	50	63	0.322	0.214	0.882	0.584	0.505	0.686	76	1.21
U-11				100	55	0.315	0.220	0.911	0.567	0.496	0.697	61	1.11
U-12				150	43	0.258	0.158	0.906	0.643	0.469	0.693	53	1.23
U-13		Yes	Yes (ResNet50)	50	138	0.254	0.195	0.954	0.507	0.471	0.733	229	1.66
U-14				100	62	0.206	0.139	0.938	0.567	0.442	0.728	99	1.60
U-15				150	63	0.187	0.128	0.947	0.529	0.428	0.748	108	1.71
L-1	LinkNet	No	Yes (ResNet18)	50	28	0.731	0.455	0.531	0.738	0.607	0.509	17	0.61
L-2				100	21	0.772	0.510	0.467	0.680	0.629	0.599	14	0.67
L-3				150	20	0.852	0.567	0.443	0.692	0.667	0.620	15	0.75
L-4		No	Yes (ResNet50)	50	20	0.666	0.412	0.586	0.712	0.583	0.493	30	1.50
L-5				100	108	0.519	0.321	0.742	0.615	0.506	0.646	146	1.35
L-6				150	134	0.508	0.293	0.751	0.645	0.486	0.647	190	1.42
L-7		Yes	Yes (ResNet18)	50	23	0.777	0.351	0.582	1.090	0.535	0.421	14	0.61
L-8				100	20	0.677	0.417	0.593	0.723	0.572	0.514	13	0.65
L-9				150	138	0.393	0.230	0.824	0.587	0.478	0.705	99	0.72
L-10		Yes	Yes (ResNet50)	50	88	0.328	0.206	0.873	0.586	0.483	0.689	126	1.43
L-11				100	104	0.314	0.219	0.898	0.562	0.494	0.697	141	1.36
L-12				150	88	0.303	0.183	0.896	0.678	0.465	0.706	128	1.45

In the published article, there was an error in the legend for Figure 6 as published. The symbols were attributed to the incorrect IDs. The blue triangle—LinkNet fn ResNet18—was described as L-5 but should have been L-2. The green star—LinkNet fn ResNet50 - was described as L-11 but should have been L-5. The blue

square—LinkNet fy ResNet18 was described as L-2 but should have been L-8. The green diamond—LinkNet fy ResNet50—was described as L-8 but should have been L-11. The order has been rearranged into the numerical order of the IDs. The correct figure and legend appears below.

In the published article, there was an error in the legend for [Figure 7](#) as published. The symbols were attributed to the incorrect IDs. The blue triangle—LinkNet fn ResNet18—was described as L-6 but should have been L-3. The blue square—LinkNet fy ResNet18 was described as L-3 but should have been L-9. The green star—LinkNet fn ResNet50—was described as L-12 but should have been L-6. The green diamond—LinkNet fy ResNet50—was described as L-9 but should have been L-12. The order has been rearranged into the numerical order of the IDs. The correct figure and legend appears below.

In the published article, there was an error in [Table 1](#) as published.

Values for the model ID L-1 and L-7 were incorrect. The corrected [Table 1](#) and its caption appear below.

The authors apologize for these errors and state that this does not change the scientific conclusions of the article in any way. The original article has been updated.

Publisher's note

All claims expressed in this article are solely those of the authors and do not necessarily represent those of their affiliated organizations, or those of the publisher, the editors and the reviewers. Any product that may be evaluated in this article, or claim that may be made by its manufacturer, is not guaranteed or endorsed by the publisher.