



Promotion of Activated Carbon on the Nucleation and Growth Kinetics of Methane Hydrates

Guodong Zhang^{1,2}, Xiaoyun Shi¹, Runcheng Zhang¹, Kun Chao¹ and Fei Wang^{1*}

¹ College of Electromechanical Engineering, Shandong Engineering Laboratory for Preparation and Application of High-Performance Carbon-Materials, Qingdao University of Science and Technology, Qingdao, China, ² Key Laboratory of Unconventional Oil & Gas Development [China University of Petroleum (East China)], Ministry of Education, Qingdao, China

Due to the hybrid effect of physical adsorption and hydration, methane storage capacity in pre-adsorbed water-activated carbon (PW-AC) under hydrate favorable conditions is impressive, and fast nucleation and growth kinetics are also anticipated. Those fantastic natures suggest the PW-AC-based hydrates to be a promising alternative for methane storage and transportation. However, hydrate formation refers to multiscale processes, the nucleation kinetics at molecule scale give rise to macrohydrate formation, and the presence of activated carbon (AC) causes this to be more complicated. Although adequate nucleation sites induced by abundant specific surface area and pore texture were reported to correspond to fast formation kinetics at macroperspective, the micronature behind that is still ambiguous. Here, we evaluated how methane would be adsorbed on PW-AC under hydrate favorable conditions to improve the understanding of hydrate fast nucleation and growth kinetics. Microbulges on AC surface were confirmed to provide numerous nucleation sites, suggesting the contribution of abundant specific surface area of AC to fast hydrate nucleation and growth kinetics. In addition, two-way convection of water and methane molecules in micropores induced by methane physical adsorption further increases gas–liquid contact at molecular scale, which may constitute the nature of confinement effect of nanopore space.

Keywords: methane hydrates, activated carbon, nucleation and growth kinetics, confinement effect, hydrate fibers, two-way convection mechanism

OPEN ACCESS

Edited by:

Sotiris Sotiropoulos,
Aristotle University of
Thessaloniki, Greece

Reviewed by:

Jiayang Wu,
Xiamen University, China
Chungang Xu,
Guangzhou Institute of Energy
Conversion (CAS), China

*Correspondence:

Fei Wang
elliott_wang@qust.edu.cn

Specialty section:

This article was submitted to
Physical Chemistry and Chemical
Physics,
a section of the journal
Frontiers in Chemistry

Received: 12 January 2020

Accepted: 08 September 2020

Published: 06 October 2020

Citation:

Zhang G, Shi X, Zhang R, Chao K and
Wang F (2020) Promotion of Activated
Carbon on the Nucleation and Growth
Kinetics of Methane Hydrates.
Front. Chem. 8:526101.
doi: 10.3389/fchem.2020.526101

INTRODUCTION

As one of the most promising energy resources, natural gas hydrates gradually get more and more attention, which are stored in permafrost and marine with huge reserves (Sloan, 2003). Unfortunately, such a big piece of cake is not easy to enjoy because of potential tremendous risks, such as seabed geological disasters and greenhouse effect. Hydrates are clathrate structures bonded by water molecules with hydrogen bonds, while guest molecules are captured under demanding conditions (high pressure and low temperature) (Sloan and Koh, 2007). For methane hydrate crystal, a non-stoichiometric composition of $8\text{CH}_4 \cdot 46\text{H}_2\text{O}$ usually forms with theoretical methane storage capacity of ca. 172 m^3 under standard condition, and this fantastic nature anticipates hydrates to be a promising alternative for the storage and transportation of natural gas, i.e., solid natural gas (SNG), especially in the point of view of cost saving and safety. However, there are technical limits toward industrial application of the SNG technology as a consequence of slow

hydrate formation kinetics and low methane storage capacity, so various promoters were employed to overcome such limits, which generally fall into two categories, thermodynamic promoters and kinetic ones (Mech et al., 2016; He et al., 2019).

Hydrate formation is governed by heat and mass transfer, which are improved by interface areas (Clarke and Bishnoi, 2000; Mohebbi et al., 2012), and the presence of solid surfaces can also enhance heterogeneous nucleation (Kvamme et al., 2007; Walsh et al., 2009). Therefore, due to high specific surface area and abundant pore texture, various porous media were reported to significantly enhance hydrate formation kinetics. Typical examples include molecular sieves (Zhou et al., 2005a; Zhong et al., 2016; Liu et al., 2018; Zhao et al., 2018), carbon nanotubes (Park et al., 2010; Zhao et al., 2014), graphite nanoparticles (Zhou et al., 2014; Yu et al., 2016, 2018), MOFs (Mu et al., 2012; Casco et al., 2016), and activated carbon (Zhou et al., 2002, 2005b, 2010; Perrin et al., 2004; Sun et al., 2007; Babu et al., 2013; Borchardt et al., 2018). Impressively, when AC was used, a short or even no induction period was commonly observed (Casco et al., 2015; Borchardt et al., 2016; Cuadrado-Collados et al., 2018), and water can be completely converted to hydrates within 2 h, accompanied with high methane storage capacity (~200 V/V) (Zhang et al., 2020). These fantastic characteristics suggest the possibility of the PW-AC-based SNG technology. However, the fast nucleation and growth mechanisms of methane hydrates loaded by AC have remained, for the most part, unanswered. Keeping this in mind, here we report how methane would be absorbed on PW-AC under hydrate-favorable conditions and evaluate potential micromechanisms behind the fast nucleation and growth kinetics.

HOW METHANE WOULD BE ADSORBED ON PW-AC

When PW-AC is used to store methane under hydrate favorable conditions, impressive phenomena are commonly observed, giving rise to hybrid adsorption mechanisms of physical adsorption and hydrate formation. A typical adsorption isotherm (Casco et al., 2017) is shown in **Figure 1A**, indicating a discrete three-stage adsorption. Apparently, methane physical adsorption in micropores contributes to methane uptake in the first stage, which is almost nil because of steric restriction. However, it significantly depends on the chemical properties of the AC surface, and since strong water molecule-AC surface interaction enhances steric restriction, hydrophobic carbon materials were known as adsorbing more methane (Casco et al., 2019), and some porous materials were even reported to have no influence on methane physical adsorption (Casco et al., 2016). Subsequently, when pressure exceeds a threshold value, i.e., equilibrium pressure, drastic methane uptake occurs that associates with hydrate formation at large pores or pore mouths. It is worth to note that the pressure is higher than that in bulk water because of capillary action (Zhou et al., 2002; Perrin et al., 2004; Liu et al., 2011; Casco et al., 2017), and the extra driving force to overcome capillary action is even higher than 1.5 MPa (see in **Table 1**). Interestingly, another fast methane consumption stage

is observed at higher pressure, which was reported to correspond to hydrate formation in micropores or small mesopores (Casco et al., 2015; Cuadrado-Collados et al., 2018). In addition, it is also worth to note that when hydrate formation kinetics are taken into account by evaluating pressure evolution, new information with more details is observed. We found a three-stage kinetic behavior during hydrate formation as shown in **Figure 1B**, methane physical adsorption occurs soon after the experimental pressure is reached, followed by a hydration induction period, and eventually hydrates form causing methane quick consumption. This observation constitutes clear evidence on the hybrid effect of methane physical adsorption and hydrate formation on methane storage in PW-AC under hydrate-favorable conditions, so it is not surprising that high methane storage capacity is commonly reported as shown in **Table 1**.

Another promising finding for PW-AC-based hydrates is that the presence of AC significantly enhances hydrate nucleation and growth kinetics. Because of the stochastic nature of hydrate nucleation, it is anticipated that the process of qualitative change caused by quantitative change governs hydrate nucleation and growth, so adequate nucleation sites are paramount corresponding to fast formation kinetics at macroperspective. As for activated carbon, abundant specific surface area and pore texture are well-known, which significantly enhance gas-liquid contact and provide tremendous potential nucleation sites, and this constitutes the macromechanisms contributing to fast hydrate nucleation and growth. However, because of complicated surface properties and pore texture, the micronature behind the macromechanisms is still unclear. One of the most appreciated factors was reported to be the chemical properties of AC surface, e.g., surface defect (Pirzadeh and Kusalik, 2013) and hydrophobic or hydrophilic properties (Casco et al., 2017, 2019; Nguyen et al., 2017), which can change the interaction between water molecules and AC surface. Water molecules are known to assemble at the sites which are occupied by surface-deflecting and oxygen-containing functional groups to form clusters, which may provide potential nucleation sites and constitute a hydrate precursor. However, some researchers argued that hydrophobic surface is more efficient, where water molecular clusters occupy the center of inner pores, while methane molecules enrich on the surface (Billemont et al., 2011; Nguyen et al., 2017). In addition, abundant pore texture of AC was also reported to promote hydrate nucleation and growth, i.e., confinement effect, which is considered to remarkably accelerate hydrate nucleation, even within minutes (Casco et al., 2015; Cuadrado-Collados et al., 2018). It is interesting to note that when water and methane molecules exist in a nanopore space, they exhibit a different behavior compared to those out of such confined space under the same conditions. It is well-known that the nanoconfinement effect equals high pressure, the so-called quasi-high-pressure effect (Urita et al., 2011; Fujimori et al., 2013), so solid water was observed in such a pore space because of low activity of water molecules, presenting an ice-like structure, which are thought to enhance hydrate nucleation. Nevertheless, non-freezing water was also reported in a confined nanopore space, which cannot contribute to hydrate formation (Casco et al., 2019; Cuadrado-Collados et al., 2019). Therefore, how the confined pore space

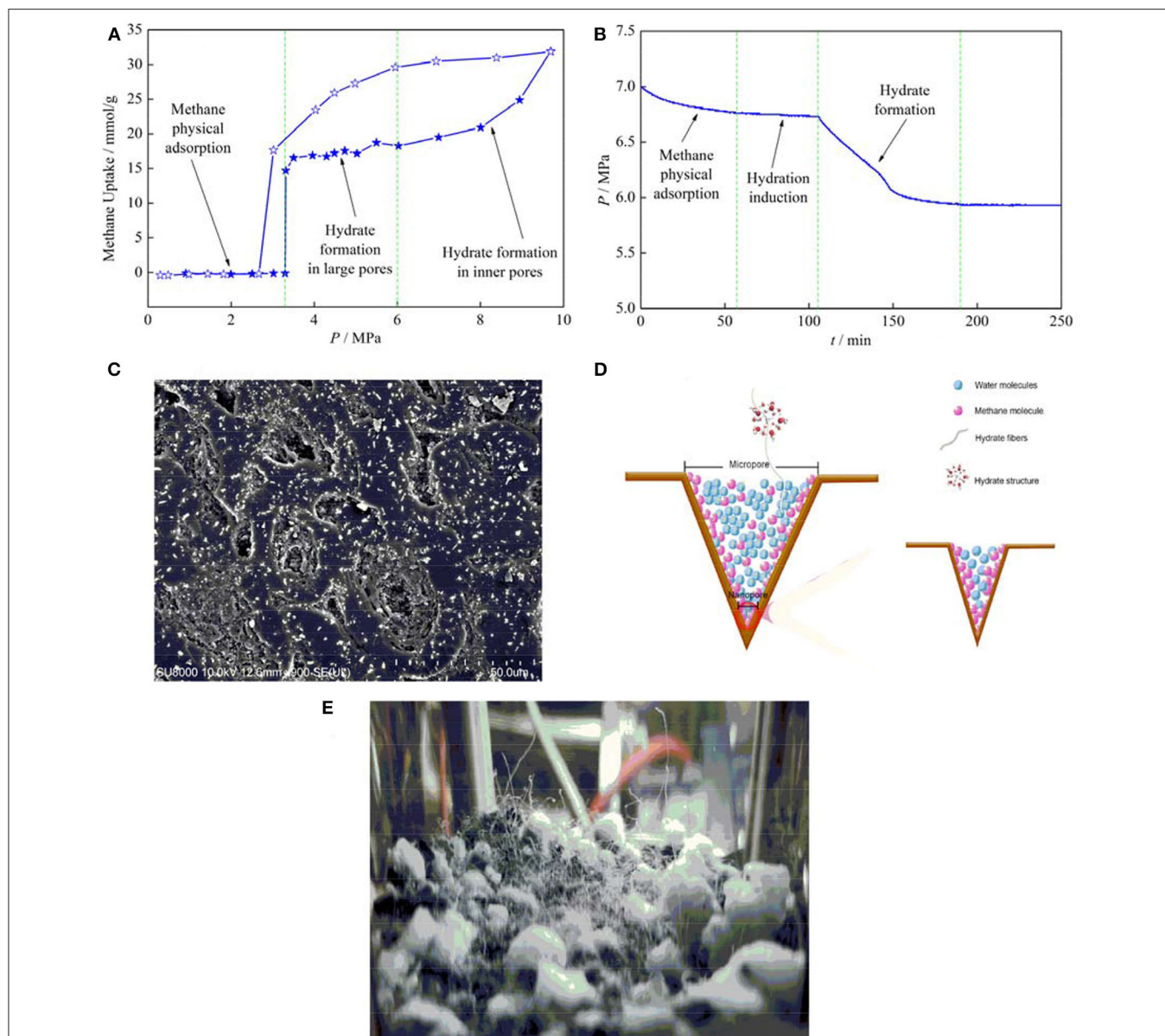


FIGURE 1 | (A) Adsorption isotherm, filled pentagrams refer to an adsorption curve, while open ones indicate a desorption curve (Casco et al., 2017) [reproduced with permission from Casco et al. (2017), copyright 2017 Elsevier]. **(B)** Pressure evolution during hydrate formation. **(C)** SEM picture of activated carbon (AC) surface; white substance covering on microbulges refers to NaCl. **(D)** Schematic of two-way convection of water and methane molecules in pore space induced by methane physical adsorption in micropores. **(E)** Hydrate fibers on AC bed.

influences hydrate nucleation and growth is still unclear due to lack of effective characterization methods at a molecular scale.

Hydrate formation refers to a multiscale process. The nucleation kinetics at a molecule scale give rise to hydrate formation at a macroscale, and the presence of AC causes this to be more complicated. However, the point one should keep in mind is that regardless of what the nature of fast nucleation and growth kinetics of hydrates loaded by AC is, the reason behind that at macroperspective must depend on the increased tremendous potential nucleation sites caused by

abundant specific surface area and pore texture. The SEM picture of AC particles is given in **Figure 1C**. The AC particles were first mixed with a small amount of NaCl solution (unsaturated, only little water remains on AC surfaces) and then quickly frozen to -50°C . Finally, the AC particles were dried by vacuuming, so NaCl would remain on the surface of the AC particles. It is clear from **Figure 1C** that there are many microbulges ($<5\ \mu\text{m}$) on the surface of AC particles, which are covered by NaCl and show white, indicating that water used to concentrate at these locations, where they would provide nucleation sites for hydrates.

TABLE 1 | Gas storage capacity in preadsorbed water activated carbon (AC).

Activated carbon	Equilibrium condition	Experimental condition	Gas storage capacity/g·g ⁻¹	R_w [†]	References
PP-AC	3.0 MPa, 2°C	10 MPa, 2°C	0.63	4.1	Casco et al., 2015
PP-AC_Ox	3.3 MPa, 2°C	10 MPa, 2°C	0.36	4.1	Casco et al., 2017
C _{meso-2}	2.49 MPa, -9°C	8.3 MPa, -9°C	0.34	2.46	Borchardt et al., 2016
Coconut-based AC	4.6 MPa, 1.85°C	10 MPa, 1.85°C	0.32	1.4	Zhou et al., 2002
Corncob-based AC	4.23 MPa, ca. 2°C	9.4 MPa, ca. 1.85°C	0.63	3.35	Liu et al., 2011
CMK_3_1.25	3.27 MPa, ca. 2°C	11.8 MPa, 1.85°C	0.66	3.86	Liu et al., 2006
NC120	3.99 MPa, 4°C	8.5 MPa, 4°C	0.28	1.0	Najibi et al., 2008
NC120	3.49 MPa, 2°C	8 MPa, 2°C	0.35	1.0	Perrin et al., 2004
Picazine	3.7 MPa, 2°C		0.57	ca. 1.0	

[†] Mass ratio of water to activated carbon used in hydrate formation experiments.

Since surface bulges are small and densely distributed on the surface of AC particles, this finding constitutes clear evidence that AC-abundant specific surface area contributes to hydrate fast nucleation and growth kinetic. The last but not the least, it is also worth to note that hydrates usually nucleate during the physical adsorption stage, and we have not observed an induction period in more than 80% of the hydrate formation experiments loaded by AC (Zhang et al., 2020), so it is safe to speculate that there should be a potential relationship between methane physical adsorption and hydrate nucleation. For hydrophobic AC, water molecules commonly occupy the center of a pore space, so the adsorbed methane molecules penetrate into the inner pore through the channel between the pore wall and the water molecules. In addition, methane adsorption in micropores was reported to induce an outward migration of water molecules (Casco et al., 2019), so two-way convection of water and methane molecules in a pore space occurs as shown in **Figure 1D**, and the enhanced molecular fluidity in a confined pore space significantly increases gas-liquid contact at the molecular scale, which further drastically increases nucleation sites. More details can be found in Zhang et al. (2020). Interestingly, it is clear from **Figure 1E** that a lot of hydrate fibers form, which grow out from inner pores. This suggests that part of hydrates nucleate in inner pores, and the promotion of confinement effect on hydrate nucleation and growth is also confirmed. To end up, despite the effective characterization methods at the molecular scale required to evaluate hydrate nucleation and growth kinetics loaded by AC, these findings open new perspective to understand the nature behind fast hydrate nucleation and growth kinetics.

DISCUSSION

The PW-AC-based SNG technology was thought to overcome all the drawbacks of ANG (Zhou et al., 2004), giving rise to higher methane storage capacity and full reversibility of methane, providing this technology is one of the most promising alternatives, but effort is still needed to pay to promote its industrial application. Despite the fast nucleation and growth kinetics commonly observed, one reason behind that is that a tiny amount of AC was usually used, but the scenario changes

completely at the industrial scale, where large AC beds retard methane dispersion and decreases gas-liquid contact. Therefore, AC packing density should be carefully considered and optimized (Perrin et al., 2003), which is one of the paramount factors that influence methane storage, transportation, and hydrate formation kinetics. Generally, a dynamic crystallizer may be more efficient to overcome this retardation effect, which may further enhance hydrate formation kinetics. In addition, since the hybrid effect, the total methane storage capacity can be enhanced by improving methane uptake in physical adsorption and hydrate separately, which depends on the physical and chemical properties of AC surface, pore size, and the contents of pre-adsorbed water, etc. As abovementioned, despite hydrophilic surface is considered to correspond to fast hydrate formation kinetics, hydrophobic carbon materials usually associate with higher methane storage capacity, so AC surface modification should be carefully carried out. Furthermore, the contents of pre-adsorbed water can significantly affect the accessibility of inner pores, so an optimal water-AC mass ratio (R_w) exists, corresponding to the maximum methane storage capacity and depending on the chemical properties of the AC surface (Celzard and Maréché, 2006; Mahboub et al., 2012; Zhang et al., 2014). Other than that, it is worth to note that R_w also affects hydrate nucleation and growth kinetics, hydrate density, and morphologies, so the optimal R_w should be addressed by taking all those factors into account. The last but not the least, hydrate nucleation and growth kinetics also notably depends on the physical properties of AC, especially the distribution of AC size and pore size. Small AC was reported to correspond to fast nucleation and growth kinetics because of more abundant specific surface area, while larger AC provides adequate interstitial pore space, giving rise to higher methane storage capacity (Siangsai et al., 2015). Moreover, because the lattice size of SI hydrate crystal is ca. 1.2 nm, the minimum pore size for hydrate nucleation was reported to be 1.6 nm (Liu et al., 2011), while the optimal pore size was evaluated to be ca. 25 nm (Borchardt et al., 2016). Ultimately, each kind of AC is unique, so its physical and chemical properties must be evaluated in detail before application, and more efficient AC with appropriate size distribution, pore width, surface properties, etc., should be

designed and fabricated to improve hydrate formation kinetics and methane storage capacity (Borchardt et al., 2018).

CONCLUSION

Although slow nucleation and growth kinetics limit the industrial application of the SNG technology, the introduction of activated carbon sheds light on it, accompanied with fast hydrate formation kinetics and high methane storage capacity, whereas the mechanisms behind that has not been clearly discussed. The promotion of surface defect, oxygen-containing functional groups, surface physical and chemical properties, and confinement effect have been commonly presented, but they seem not to constitute the essence of fast hydrate formation kinetics. Generally, because of the stochastic nature of hydrate nucleation, it is anticipated that the qualitative change (macro formation) caused by quantitative change (micro multisite nucleation) governs hydrate formation kinetics. Therefore, the increased tremendous potential nucleation sites caused by abundant specific surface area and pore texture should correspond to fast hydrate formation kinetics at macroperspective, and the nature behind them may be numerous microbulges

on the surface of AC particles and two-way convection of methane/water molecules induced by methane physical adsorption in micropores.

AUTHOR CONTRIBUTIONS

FW prepared the manuscript. GZ wrote the manuscript. XS, RZ, and KC reviewed the manuscript and provided comments, suggestions, and edits. All authors contributed to the article and approved the submitted version.

FUNDING

This study was supported by the Natural Science Foundation of Shandong Province, China (Grant No. ZR2018BEE005), National Natural Science Foundation of China (Grant Nos. 51804175, 21706269, and 21978142), the Youth Innovation Talent Development Project for Universities of Shandong Province, the Taishan Scholar Project of Shandong Province, the Opening Fund of Key Laboratory of Unconventional Oil & Gas Development [China University of Petroleum (East China)], the Ministry of Education, and the Fundamental Research Funds for the Central Universities.

REFERENCES

- Babu, P., Yee, D., Linga, P., Palmer, A., Khoo, B. C., Tan, T. S., et al. (2013). Morphology of methane hydrate formation in porous media. *Energy Fuels* 27, 3364–3372. doi: 10.1021/ef4004818
- Billemont, P., Coasne, B., and De Weireld, G. (2011). An experimental and molecular simulation study of the adsorption of carbon dioxide and methane in nanoporous carbons in the presence of water. *Langmuir* 27, 1015–1024. doi: 10.1021/la103107t
- Borchardt, L., Casco, M. E., and Silvestre-Albero, J. (2018). Methane hydrate in confined spaces: an alternative storage system. *ChemPhysChem* 19, 1298–1314. doi: 10.1002/cphc.201701250
- Borchardt, L., Nickel, W., Casco, M., Senkovska, I., Bon, V., Wallacher, D., et al. (2016). Illuminating solid gas storage in confined spaces-methane hydrate formation in porous model carbons. *Phys. Chem. Chem. Phys.* 18, 20607–20614. doi: 10.1039/C6CP03993F
- Casco, M. E., Cuadrado-Collados, C., Martínez-Escandell, M., Rodríguez-Reinoso, F., and Silvestre-Albero, J. (2017). Influence of the oxygen-containing surface functional groups in the methane hydrate nucleation and growth in nanoporous carbon. *Carbon* 123, 299–301. doi: 10.1016/j.carbon.2017.07.061
- Casco, M. E., Rey, F., Jordá, J. L., Rudić, S., Fauth, F., Martínez-Escandell, M., et al. (2016). Paving the way for methane hydrate formation on metal-organic frameworks (MOFs). *Chem. Sci.* 7, 3658–3666. doi: 10.1039/C6SC00272B
- Casco, M. E., Silvestre-Albero, J., Ramírez-Cuesta, A. J., Rey, F., Jordá, J. L., Bansode, A., et al. (2015). Methane hydrate formation in confined nanospace can surpass nature. *Nat. Commun.* 6:6432. doi: 10.1038/ncomms7432
- Casco, M. E., Zhang, E., Grätz, S., Krause, S., Bon, V., Wallacher, D., et al. (2019). Experimental evidence of confined methane hydrate in hydrophilic and hydrophobic model carbons. *J. Phys. Chem. C* 123, 24071–24079. doi: 10.1021/acs.jpcc.9b06366
- Celzard, A., and Maréché, J. F. (2006). Optimal wetting of active carbons for methane hydrate formation. *Fuel* 85, 957–966. doi: 10.1016/j.fuel.2005.10.019
- Clarke, M., and Bishnoi, P. R. (2000). Determination of the intrinsic rate of ethane gas hydrate decomposition. *Chem. Eng. Sci.* 55, 4869–4883. doi: 10.1016/S0009-2509(00)00137-8
- Cuadrado-Collados, C., Majid, A. A., Martínez-Escandell, M., Daemen, L. L., Missyul, A., Koh, C. A., et al. (2019). Freezing/melting of water in the confined nanospace of carbon materials: effect of an external stimulus. *Carbon* 158, 346–355. doi: 10.1016/j.carbon.2019.10.081
- Cuadrado-Collados, C., Fauth, F., Such-Basañez, I., Martínez-Escandell, M., and Silvestre-Albero, J. (2018). Methane hydrate formation in the confined nanospace of activated carbons in seawater environment. *Microporous Mesoporous Mater.* 255, 220–225. doi: 10.1016/j.micromeso.2017.07.047
- Fujimori, T., Morelos-Gómez, A., Zhu, Z., Muramatsu, H., Futamura, R., Urita, K., et al. (2013). Conducting linear chains of sulphur inside carbon nanotubes. *Nat. Commun.* 4:2162. doi: 10.1038/ncomms3162
- He, Y., Sun, M. T., Chen, C., Zhang, G. D., Chao, K., Lin, Y., et al. (2019). Surfactant-based promotion to gas hydrate formation for energy storage. *J. Mater. Chem. A* 7, 21634–21661. doi: 10.1039/C9TA07071K
- Kvamme, B., Graue, A., Buanes, T., Kuznetsova, T., and Erslund, G. (2007). Storage of CO₂ in natural gas hydrate reservoirs and the effect of hydrate as an extra sealing in cold aquifers. *Int. J. Greenhouse Gas Control.* 1, 236–246. doi: 10.1016/S1750-5836(06)00002-8
- Liu, J., Zhou, Y., Sun, Y., Su, W., and Zhou, L. (2011). Methane storage in wet carbon of tailored pore sizes. *Carbon* 49, 3731–3736. doi: 10.1016/j.carbon.2011.05.005
- Liu, X., Liu, D., Xie, W., Cui, X., and Chen, Y. (2018). Methane hydrate uptake of MCM-41 mesoporous molecular sieves with preadsorbed water. *J. Chem. Eng. Data* 63, 1767–1772. doi: 10.1021/acs.jced.8b00060
- Liu, X., Zhou, L., Li, J., Sun, Y., Su, W., and Zhou, Y. (2006). Methane sorption on ordered mesoporous carbon in the presence of water. *Carbon* 44, 1386–1392. doi: 10.1016/j.carbon.2005.11.018
- Mahboub, M. J. D., Ahmadpour, A., and Rashidi, H. (2012). Improving methane storage on wet activated carbons at various amounts of water. *J. Fuel Chem. Technol.* 40, 385–389. doi: 10.1016/S1872-5813(12)60017-6
- Mech, D., Gupta, P., and Sangwai, J. S. (2016). Kinetics of methane hydrate formation in an aqueous solution of thermodynamic promoters (THF and TBAB) with and without kinetic promoter (SDS). *J. Nat. Gas Sci. Eng.* 35, 1519–1534. doi: 10.1016/j.jngse.2016.06.013
- Mohebbi, V., Naderifar, A., Behbahani, R. M., and Moshfeghian, M. (2012). Investigation of kinetics of methane hydrate formation during isobaric and isochoric processes in an agitated reactor. *Chem. Eng. Sci.* 76, 58–65. doi: 10.1016/j.ces.2012.04.016

- Mu, L., Liu, B., Liu, H., Yang, Y., Sun, C., and Chen, G. (2012). A novel method to improve the gas storage capacity of ZIF-8. *J. Mater. Chem.* 22, 12246–12252. doi: 10.1039/c2jm31541f
- Najibi, H., Chapoy, A., and Tohidi, B. (2008). Methane/natural gas storage and delivered capacity for activated carbons in dry and wet conditions. *Fuel* 87, 7–13. doi: 10.1016/j.fuel.2007.03.044
- Nguyen, N. N., Nguyen, A. V., Steel, K. M., Dang, L. X., and Galib, M. (2017). Interfacial gas enrichment at hydrophobic surfaces and the origin of promotion of gas hydrate formation by hydrophobic solid particles. *J. Phys. Chem. C* 121, 3830–3840. doi: 10.1021/acs.jpcc.6b07136
- Park, S. S., Lee, S. B., and Kim, N. J. (2010). Effect of multi-walled carbon nanotubes on methane hydrate formation. *J. Ind. Eng. Chem.* 16, 551–555. doi: 10.1016/j.jiec.2010.03.023
- Perrin, A., Celzard, A., Maréché, J. F., and Furdin, G. (2004). Improved methane storage capacities by sorption on wet active carbons. *Carbon* 42, 1249–1256. doi: 10.1016/j.carbon.2004.01.039
- Perrin, A., Celzard, A., Maréché, J. F., and Furdin, G. (2003). Methane storage within dry and wet active carbons: a comparative study. *Energy Fuels* 17, 1283–1291. doi: 10.1021/ef030067i
- Pirzadeh, P., and Kusalik, P. G. (2013). Molecular insights into clathrate hydrate nucleation at an ice-solution interface. *J. Am. Chem. Soc.* 135, 7278–7287. doi: 10.1021/ja400521e
- Siangsai, A., Rangsunvigit, P., Kitiyanan, B., Kulprathipanja, S., and Linga, P. (2015). Investigation on the roles of activated carbon particle sizes on methane hydrate formation and dissociation. *Chem. Eng. Sci.* 126, 383–389. doi: 10.1016/j.ces.2014.12.047
- Sloan, E. D. (2003). Fundamental principles and applications of natural gas hydrates. *Nature* 426, 353–359. doi: 10.1038/nature02135
- Sloan, E. D., and Koh, C. A. (2007). *Clathrate Hydrates of Natural Gases*, 3rd Edn. Boca Raton, FL: Taylor and Francis. doi: 10.1201/9781420008494
- Sun, Y., Wang, Y., Zhang, Y., Zhou, Y., and Zhou, L. (2007). CO₂ sorption in activated carbon in the presence of water. *Chem. Phys. Lett.* 437, 14–16. doi: 10.1016/j.cplett.2007.02.008
- Urita, K., Shiga, Y., Fujimori, T., Iiyama, T., Hattori, Y., Kanoh, H., et al. (2011). Confinement in carbon nanospace-induced production of KI nanocrystals of high-pressure phase. *J. Am. Chem. Soc.* 133, 10344–10347. doi: 10.1021/ja202565r
- Walsh, M. R., Koh, C. A., Sloan, D. E., Sum, A. K., and Wu, D. T. (2009). Microsecond simulations of spontaneous methane hydrate nucleation and growth. *Science* 326, 1095–1098. doi: 10.1126/science.1174010
- Yu, Y. S., Xu, C. G., and Li, X. S. (2018). Evaluation of CO₂ hydrate formation from mixture of graphite nanoparticle and sodium dodecyl benzene sulfonate. *J. Ind. Eng. Chem.* 59, 64–69. doi: 10.1016/j.jiec.2017.10.007
- Yu, Y. S., Zhou, S. D., Li, X. S., and Wang, S. L. (2016). Effect of graphite nanoparticles on CO₂ hydrate phase equilibrium. *Fluid Phase Equilib.* 414, 23–28. doi: 10.1016/j.fluid.2015.12.054
- Zhang, G., Sun, M., Liu, B., and Wang, F. (2020). Adsorption-induced two-way nanoconvection enhances nucleation and growth kinetics of methane hydrates in confined porespace. *Chem. Eng. J.* 396:125256. doi: 10.1016/j.cej.2020.125256
- Zhang, X. X., Liu, H., Sun, C. Y., Xiao, P., Liu, B., Yang, L. Y., et al. (2014). Effect of water content on separation of CO₂/CH₄ with active carbon by adsorption-hydration hybrid method. *Sep. Purif. Technol.* 130, 132–140. doi: 10.1016/j.seppur.2014.04.028
- Zhao, J., Zhao, Y., Liang, W., Song, S., and Gao, Q. (2018). Semi-clathrate hydrate process of methane in porous media-mesoporous materials of SBA-15. *Fuel* 220, 446–452. doi: 10.1016/j.fuel.2018.01.010
- Zhao, W., Wang, L., Bai, J., Francisco, J. S., and Zeng, X. C. (2014). Spontaneous formation of one-dimensional hydrogen gas hydrate in carbon nanotubes. *J. Am. Chem. Soc.* 136, 10661–10668. doi: 10.1021/ja5041539
- Zhong, D. L., Li, Z., Lu, Y. Y., Wang, J. L., Yan, J., and Qing, S. L. (2016). Investigation of CO₂ capture from a CO₂ + CH₄ gas mixture by gas hydrate formation in the fixed bed of a molecular sieve. *Ind. Eng. Chem. Res.* 55, 7973–7980. doi: 10.1021/acs.iecr.5b03989
- Zhou, L., Liu, J., Su, W., Sun, Y., and Zhou, Y. (2010). Progress in studies of natural gas storage with wet adsorbents. *Energy Fuels* 24, 3789–3795. doi: 10.1021/ef100315t
- Zhou, L., Liu, X., Sun, Y., Li, J., and Zhou, Y. (2005a). Methane sorption in ordered mesoporous silica SBA-15 in the presence of water. *J. Phys. Chem. B* 109, 883–888. doi: 10.1021/jp0546002
- Zhou, L., Sun, Y., and Zhou, Y. (2002). Enhancement of the methane storage on activated carbon by preadsorbed water. *AIChE J.* 48, 2412–2416. doi: 10.1002/aic.690481030
- Zhou, S. D., Yu, Y. S., Zhao, M. M., Wang, S. L., and Zhang, G. Z. (2014). Effect of graphite nanoparticles on promoting CO₂ hydrate formation. *Energy Fuels* 28, 4694–4698. doi: 10.1021/ef5000886
- Zhou, Y., Dai, M., Zhou, L., Sun, Y., and Su, W. (2004). Storage of methane on wet activated carbon: influence of pore size distribution. *Carbon* 42, 1855–1858. doi: 10.1016/j.carbon.2004.02.009
- Zhou, Y., Wang, Y., Chen, H., and Zhou, L. (2005b). Methane storage in wet activated carbon: studies on the charging/discharging process. *Carbon* 43, 2007–2012. doi: 10.1016/j.carbon.2005.03.017

Conflict of Interest: The authors declare that the research was conducted in the absence of any commercial or financial relationships that could be construed as a potential conflict of interest.

Copyright © 2020 Zhang, Shi, Zhang, Chao and Wang. This is an open-access article distributed under the terms of the Creative Commons Attribution License (CC BY). The use, distribution or reproduction in other forums is permitted, provided the original author(s) and the copyright owner(s) are credited and that the original publication in this journal is cited, in accordance with accepted academic practice. No use, distribution or reproduction is permitted which does not comply with these terms.