



## OPEN ACCESS

EDITED AND REVIEWED BY  
Kirsten Haastert-Talini,  
Hannover Medical School, Germany

## \*CORRESPONDENCE

Hao Zhang  
✉ zhanghaodoctor@hotmail.com  
Zhuojing Luo  
✉ zhuojingl@163.com  
Jinghui Huang  
✉ huangjh@fmmu.edu.cn

<sup>†</sup>These authors have contributed equally to this work

RECEIVED 11 February 2025  
ACCEPTED 13 March 2025  
PUBLISHED 25 March 2025

## CITATION

Zhou J, Li S, Gao J, Hu Y, Chen S, Luo X, Zhang H, Luo Z and Huang J (2025) Corrigendum: Epothilone B facilitates peripheral nerve regeneration by promoting autophagy and migration in Schwann cells. *Front. Cell. Neurosci.* 19:1574709. doi: 10.3389/fncel.2025.1574709

## COPYRIGHT

© 2025 Zhou, Li, Gao, Hu, Chen, Luo, Zhang, Luo and Huang. This is an open-access article distributed under the terms of the [Creative Commons Attribution License \(CC BY\)](https://creativecommons.org/licenses/by/4.0/). The use, distribution or reproduction in other forums is permitted, provided the original author(s) and the copyright owner(s) are credited and that the original publication in this journal is cited, in accordance with accepted academic practice. No use, distribution or reproduction is permitted which does not comply with these terms.

# Corrigendum: Epothilone B facilitates peripheral nerve regeneration by promoting autophagy and migration in Schwann cells

Jianhua Zhou<sup>1†</sup>, Shengyou Li<sup>2†</sup>, Jianbo Gao<sup>2†</sup>, Yawei Hu<sup>1</sup>, Shaochu Chen<sup>1</sup>, Xinle Luo<sup>1</sup>, Hao Zhang<sup>1\*</sup>, Zhuojing Luo<sup>2\*</sup> and Jinghui Huang<sup>2\*</sup>

<sup>1</sup>Department of Spine Surgery, The People's Hospital of Longhua District of Shenzhen, Shenzhen, China, <sup>2</sup>Department of Orthopedics, Xijing Hospital, Fourth Military Medical University, Xi'an, China

## KEYWORDS

epothilone B, autophagy, migration, peripheral nerve injury, remyelination

## A Corrigendum on

## Epothilone B facilitates peripheral nerve regeneration by promoting autophagy and migration in Schwann cells

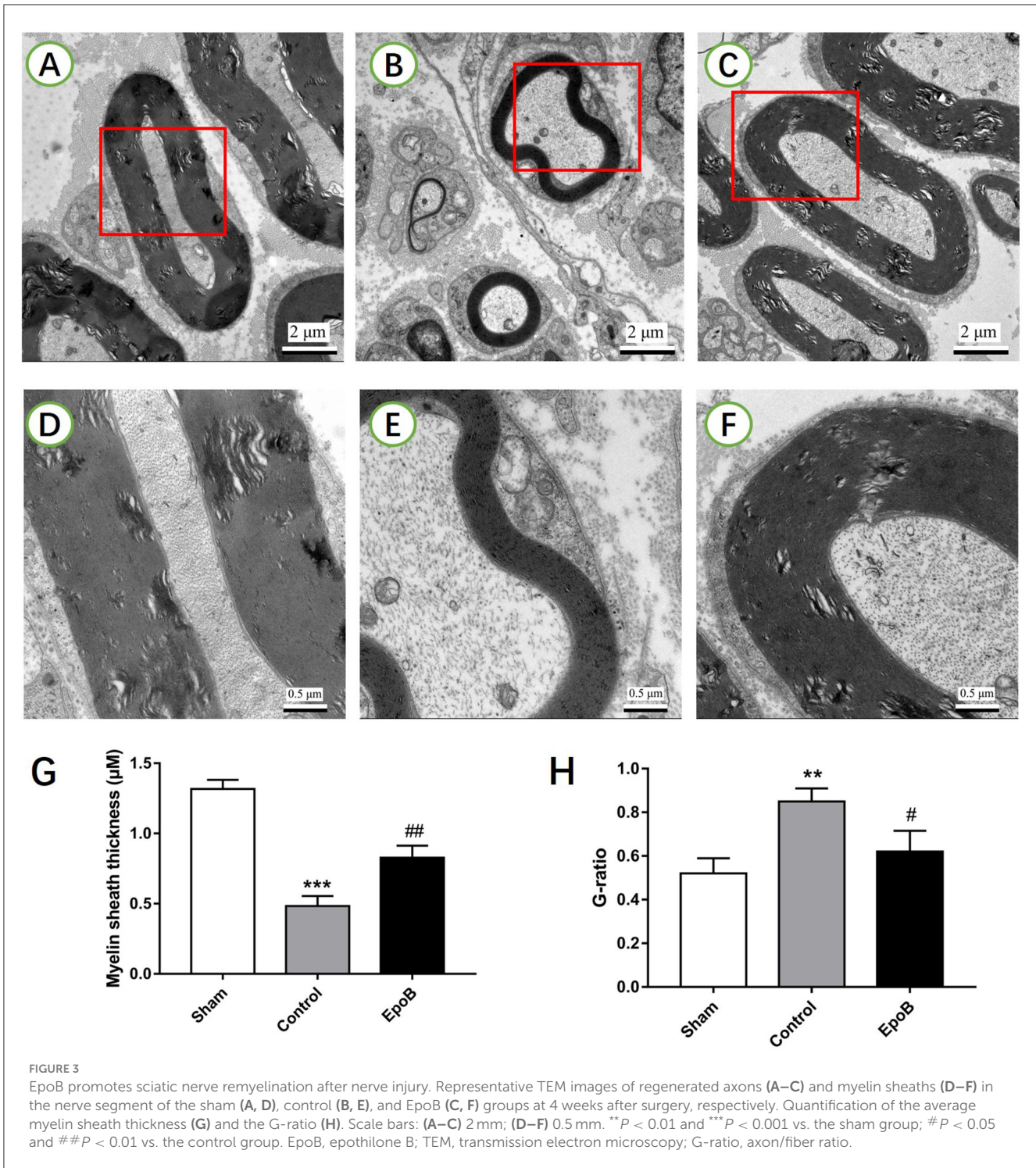
by Zhou, J., Li, S., Gao, J., Hu, Y., Chen, S., Luo, X., Zhang, H., Luo, Z., and Huang, J. (2020). *Front. Cell. Neurosci.* 14:143. doi: 10.3389/fncel.2020.00143

In the published article, there were errors in [Figures 3, 5](#) as published. [Figure 3D](#), intended to serve as an enlarged representation of [Figure 3C](#), was placed in the wrong position. Although the trend of the result is accurate, the image does not correspond to the experiment. To rectify this, the authors have reorganized the transmission electron microscopy images in [Figure 3](#). Additionally, the transwell images in [Figures 5H, 6N](#) appear to overlap. Although both images represent results from the same experimental group (SCs treated with EpoB), the authors have chosen to replace [Figure 5H](#) to avoid any possible confusion. The corrected [Figures 3, 5](#) and their respective captions appear below.

The authors apologize for these errors and state that they do not change the scientific conclusions of the article in any way. The original article has been updated.

## Publisher's note

All claims expressed in this article are solely those of the authors and do not necessarily represent those of their affiliated organizations, or those of the publisher, the editors and the reviewers. Any product that may be evaluated in this article, or claim that may be made by its manufacturer, is not guaranteed or endorsed by the publisher.



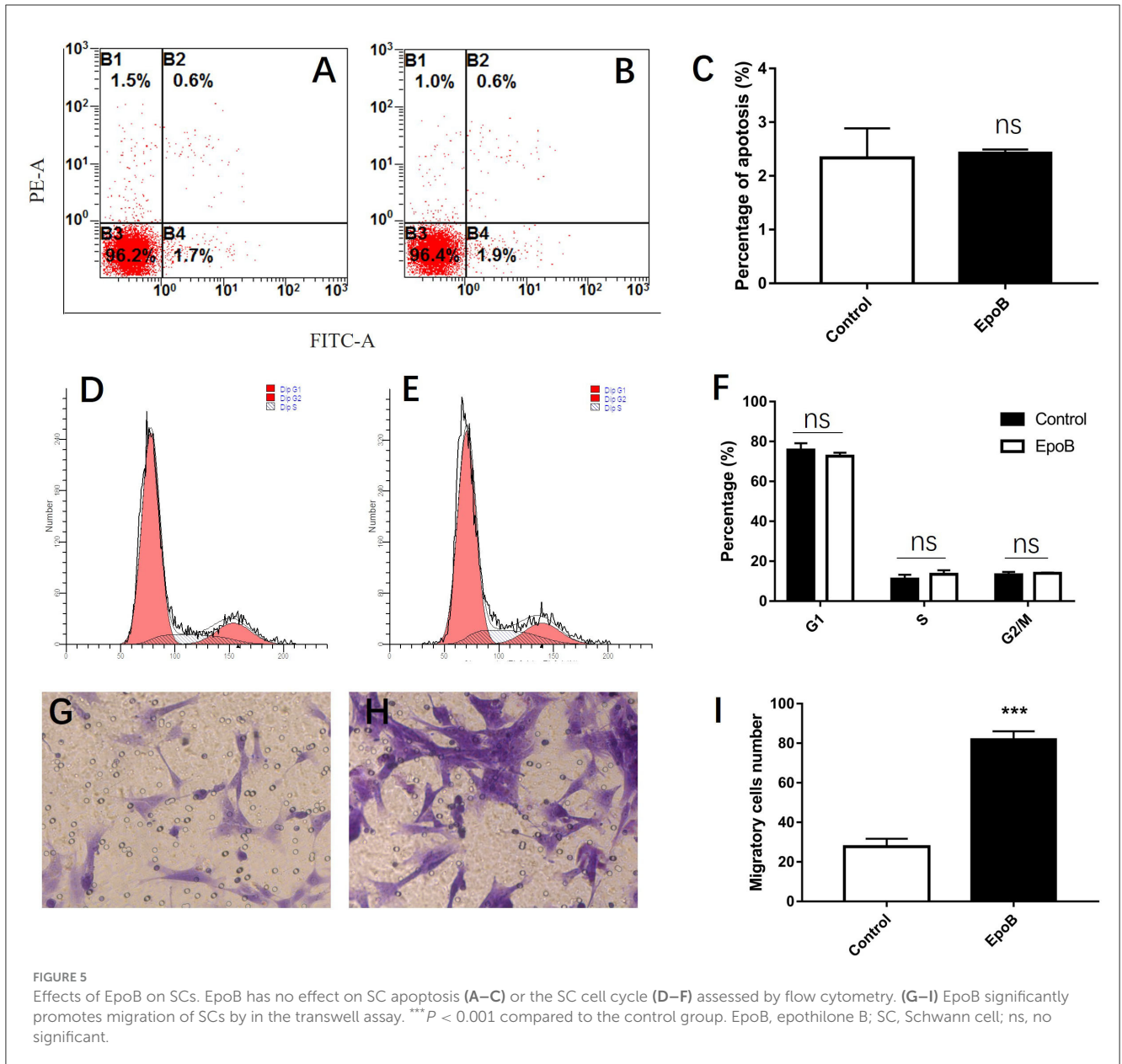


FIGURE 5

Effects of EpoB on SCs. EpoB has no effect on SC apoptosis (A–C) or the SC cell cycle (D–F) assessed by flow cytometry. (G–I) EpoB significantly promotes migration of SCs by the transwell assay. \*\*\* $P < 0.001$  compared to the control group. EpoB, epoithilone B; SC, Schwann cell; ns, no significant.