



Evolution and Development of the Inner Ear Efferent System: Transforming a Motor Neuron Population to Connect to the Most Unusual Motor Protein via Ancient Nicotinic Receptors

Bernd Fritzscht* and Karen L. Elliott

Department of Biology, University of Iowa, Iowa, IA, USA

OPEN ACCESS

Edited by:

Barbara Jane Morley,
Boys Town National Research
Hospital, USA

Reviewed by:

Dwayne D. Simmons,
Baylor University, USA
Hong-Bo Zhao,
University of Kentucky, USA
Elisabeth Glowatzki,
Johns Hopkins University, USA

*Correspondence:

Bernd Fritzscht
bernd-fritzscht@uiowa.edu

Received: 16 January 2017

Accepted: 05 April 2017

Published: 24 April 2017

Citation:

Fritzscht B and Elliott KL (2017)
*Evolution and Development of the
Inner Ear Efferent System:
Transforming a Motor Neuron
Population to Connect to the Most
Unusual Motor Protein via Ancient
Nicotinic Receptors.*
Front. Cell. Neurosci. 11:114.
doi: 10.3389/fncel.2017.00114

All craniate chordates have inner ears with hair cells that receive input from the brain by cholinergic centrifugal fibers, the so-called inner ear efferents (IEEs). Comparative data suggest that IEEs derive from facial branchial motor (FBM) neurons that project to the inner ear instead of facial muscles. Developmental data showed that IEEs develop adjacent to FBMs and segregation from IEEs might depend on few transcription factors uniquely associated with IEEs. Like other cholinergic terminals in the peripheral nervous system (PNS), efferent terminals signal on hair cells through nicotinic acetylcholine channels, likely composed out of alpha 9 and alpha 10 units (Chrna9, Chrna10). Consistent with the evolutionary ancestry of IEEs is the even more conserved ancestry of Chrna9 and 10. The evolutionary appearance of IEEs may reflect access of FBMs to a novel target, possibly related to displacement or loss of mesoderm-derived muscle fibers by the ectoderm-derived ear vesicle. Experimental transplantations mimicking this possible aspect of ear evolution showed that different motor neurons of the spinal cord or brainstem form cholinergic synapses on hair cells when ears replace somites or eyes. Transplantation provides experimental evidence in support of the evolutionary switch of FBM neurons to become IEEs. Mammals uniquely evolved a prestin related motor system to cause shape changes in outer hair cells regulated by the IEEs. In summary, an ancient motor neuron population drives in craniates via signaling through highly conserved Chrna receptors a uniquely derived cellular contractility system that is essential for hearing in mammals.

Keywords: ear, development, evolution, efferents, facial branchial motor neurons, nicotinic receptors, alpha 9, alpha 10

INTRODUCTION

The central nervous system (CNS) of craniate chordates connects to peripheral target organs via two sets of nerve fibers comprising the peripheral nervous system (PNS):

- 1) Afferent (centripetal) fibers bring information into the CNS. Afferents develop from neural crest or placode-derived sensory neurons of spinal and cranial ganglia (Northcutt, 2005). Central axons end in the alar plate of the spinal cord and hindbrain whereas the distal processes contact skin and muscle associated receptors (neural crest ganglia) and inner ear, lateral line (if present), and taste bud sensory cells (placode ganglia). All ganglion neurons are glutamatergic with variable additional transmitters and require the bHLH genes *Neurog1* and *2* for their development (Ma et al., 2000).
- 2) Efferent (centrifugal) fibers bring information to the PNS. Efferents develop in vertebrates from basal plate-derived motor neurons and axons project either through ventral roots (somatic and visceral motor neurons of the spinal cord), or dorsal roots (only branchial and visceral motor neurons of the hindbrain). Efferent fibers reach striated muscle fibers or neural crest-derived visceral ganglia of the autonomic system. Efferents use acetylcholine as the primary transmitter with variable additional transmitters. Efferents, branchial, visceral, and most ocular cranial motor neurons require *Phox2a* and/or *2b* for their normal development (Tiveron et al., 2003) whereas spinal somatic and visceral motor neurons require the bHLH gene *Olig2* (Espinosa-Medina et al., 2016).
- 3) Among the special cranial senses, the inner ear and the eye are unique in that they receive efferent (centrifugal) innervation. The efferent innervation of the craniate retina is highly variable and appears to reflect the original connection of the diencephalic brain that evolved into the vertebrate retina (Manns and Fritzschn, 1991; Ward et al., 1991; Repérant et al., 2007; Lamb, 2013). In contrast to the visual system, the highly divergent original findings on the inner ear efferent (IEE) system (Fritzschn et al., 2016a) soon concentrated on a single theme: efferents to the ear being evolutionary derived from facial branchial motor neurons (FBMs) (Roberts and Meredith, 1992; Sienknecht et al., 2014). Further work demonstrated that IEEs diverge through selective expression of certain transcription factors from FBMs to end on inner ear sensory hair cells (Karis et al., 2001; Sienknecht et al., 2014).

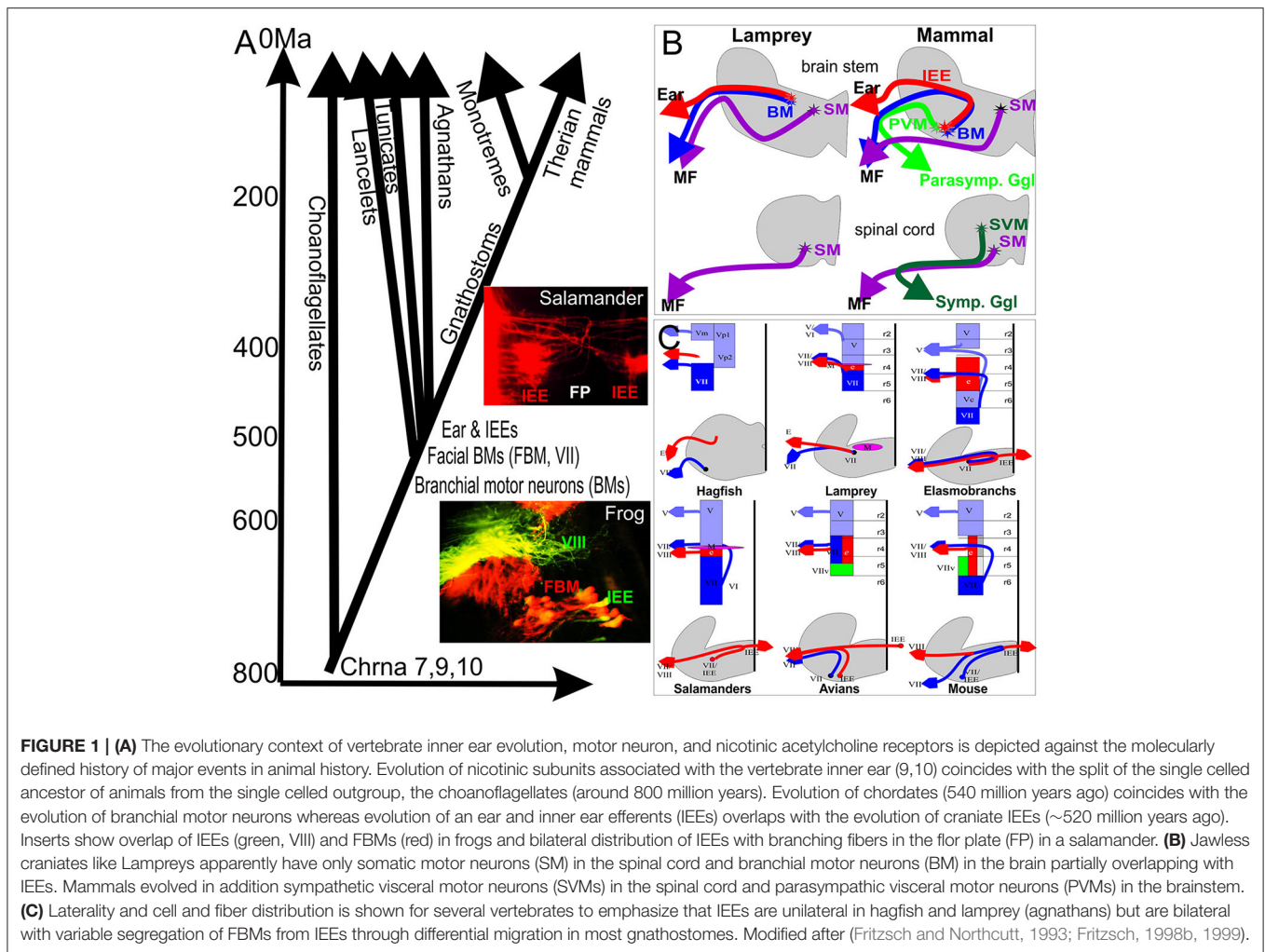
This review will provide evidence for the evolutionary and developmental reorganization of FBMs to IEEs that terminate on hair cells carrying an ancient nicotinic acetylcholine receptor (Elgoyhen et al., 1994; Lustig et al., 2001).

EVOLUTION OF THE VERTEBRATE EAR AND EFFERENT SYSTEM TO HAIR CELLS IN CRANIATE VERTEBRATES

Craniates evolved out of chordates some 540 million years ago (Mallatt and Holland, 2013), and jawless and jawed vertebrates separated around 520 million years ago (Figure 1). Craniate

ancestors evolved all major cranial sensory organs (eye, ear, nose, taste) from molecular and cellular precursors found in acraniate chordates. In contrast to craniate sensory organs, sensory hair cell precursors of the ear can be traced to chordates and possibly even to the unicellular ancestor of all animals living some 800 million years ago (Fritzschn et al., 2007; Burighel et al., 2011). These sensory cells aggregate to form the vertebrate ear (and lateral line, if present) found only in craniates. The ear is topographically closely associated with the facial nerve and FBMs may be among the oldest branchial motor neurons shared among chordates (Fritzschn and Northcutt, 1993; Dufour et al., 2006). IEEs evolved only with the formation of the craniate ear (Fritzschn, 1999) and are found in agnathans such as lamprey (Fritzschn et al., 1989; Fritzschn, 1998a) and hagfish (Jørgensen et al., 1998) and all jawed vertebrates (Roberts and Meredith, 1992; Fritzschn, 1999). Efferent, vesicle filled terminals to craniate hair cell precursors exist in tunicate chordates (Burighel et al., 2011). Whether the terminals are cholinergic and are branches of FBM axons is unknown. It is also unclear if this is an independently derived feature of tunicates or the primitive condition for chordates. Combined, these data support that IEEs may have co-evolved with the craniate ear.

The very discovery of IEEs was possible due the cholinergic nature of these fibers, a feature shared with motor neurons (Roberts and Meredith, 1992). Despite this compelling evidence, the puzzling array of widely distributed cells traceable from the ear in different vertebrates provided little evidence of a uniform nature of these cells. Major issues associated with the recognition that IEEs are evolutionary-derived FBMs were several unusual features found in some but not all IEEs, even after doubtful IEE candidates had been eliminated (Fritzschn et al., 2016a). All IEEs, labeled by several groups, share some pathway inside the brain with FBM axons in all vertebrates (Roberts and Meredith, 1992; Fritzschn, 1999) and may even exit the brain with FBM axons to reroute to the ear in the joined facial-octaval nerve root. Only a minority of vertebrates have IEEs that remain ipsilateral: lampreys and frogs show an IEE cellular distribution that is closely associated and almost indistinguishable from FBMs (Fritzschn et al., 1989; Hellmann and Fritzschn, 1996) (Figure 1). In craniates, IEEs are bilaterally distributed (Fritzschn, 1999), a feature only shared with very few other motor neurons such as the trochlear motor neurons in lampreys (Fritzschn et al., 1990) and a subset of oculomotor motor neurons in all vertebrates investigated thus far (Fritzschn et al., 1990, 1995; Cheng et al., 2014). Another distinguishing feature of IEEs is their sometimes extremely widespread distribution of axonal branches that can cover adjacent organ systems such as multiple inner ear sensory epithelia and can be bilateral to both ears (Fritzschn and Wahnschaffe, 1987; Cowan et al., 2000) or even connect both inner ear and lateral line organs (Hellmann and Fritzschn, 1996). This highly branched and wide distribution of IEE axon bifurcations is more reminiscent of reticular neurons in the brainstem and not shared with typical motor neurons that target a given muscle. Furthermore, while IEEs are in most cases topographically closely associated with FBMs, in particular mammalian IEEs to the organ of Corti show an unusual distribution of their cell bodies associated with second



order auditory nuclei of the brainstem, the superior olivary nuclei, and associated nuclei (Roberts and Meredith, 1992; Sienknecht et al., 2014). The olivo-cochlear efferents (OCEs) can be subdivided into the medial olivo-cochlear (MOC) projecting to outer hair cells and the lateral olivo-cochlear (LOC) system ending on type I afferents adjacent to inner hair cells (Simmons et al., 2011). Only MOC remain cholinergic whereas LOC fibers switch to other transmitters during development (Simmons et al., 2011).

In summary, IEEs apparently co-evolved with the vertebrate ear and are evolutionarily derived from FBMs, showing a complicated cellular distribution and axonal targets across various lineages of vertebrates.

CHRNA 7.8.9 ARE THE PHYLOGENETICALLY OLDEST CHOLINERGIC RECEPTOR UNITS AND EVOLVED BEFORE CHORDATES

Obviously, if FBMs evolved in chordates one would expect that the evolution of nicotinic acetylcholine receptors (nAChR

encoded by the Chrna genes) predates chordates. Indeed, the molecular origin of these receptors occurred over 1 billion years ago. Recent cladistic analysis indicates a rapid multiplication and molecular diversification into several subunits around 800 million years ago (Li et al., 2016) when multicellular animals evolved out of single celled ancestors (**Figure 1**). The oldest Chrna subunits, Chrna7 and 8, are found both in vertebrates and invertebrates (Papke, 2014). The two Chrna subunits now associated with the efferent innervation of the vertebrate hair cells, Chrna 9 and 10 (Elgoyhen et al., 1994, 2001; Goutman et al., 2015), show a very early split from other Chrna subunits and appear to be exclusively associated with vertebrates (Li et al., 2016). Neither Chrna 9 nor 10 have been identified in lancelet or ascidians. If present in the respective genomes, their cellular distribution could support possible homology of mechanosensory cells (Fritzscht et al., 2007) by showing expression in those sensory cells that receive efferent terminals (Burighel et al., 2011). Chrna 7, 8, 9, and 10 are recognized in lampreys but their distribution has not been verified experimentally (Smith et al., 2013). It is important to note that these ancestral Chrna units can form either pentameric homo- or hetero-multimeres with each other (Papke, 2014; Li

et al., 2016) but details in the ear are not yet clear (Katz et al., 2011). Lymphocytes also express *Chrna9* and *10* (Lustig et al., 2001) arguing for a function on a free floating cell that is distinct from that in a synapse. In addition, some proteins associated with motor neuron synapses have been associated with the hair cell/efferent synapse (Osman et al., 2008; Roux et al., 2016)

While the function of the IEEs in the lateral line and vestibular part of the inner ear is extensively debated (Sienknecht et al., 2014), there is agreement on a subset of IEE's function on certain hair cells of the mammalian ear, the medial OCEs ending on outer hair cells. Outer hair cells have the ability to contract to alter the tuning properties to sound stimulation (Zheng et al., 2000; Dallos et al., 2008) using a highly derived *Slc* channel, *Prestin* (Franchini and Elgoyhen, 2006; Okoruwa et al., 2008; Tan et al., 2011; Tang et al., 2013; Goutman et al., 2015). The efferent system affects the contractility of the OHC via the *Chrna9* and *10* stimulation (Elgoyhen and Franchini, 2011; Katz et al., 2011). Like *Chrna9* and *10*, *Prestin* shows an early evolution that is not associated with its later function as the outer hair cell motor protein (Franchini and Elgoyhen, 2006) which appears to be closely associated with the evolution of the outer hair cell type only in mammals (Okoruwa et al., 2008; Tan et al., 2011; Fritzsich et al., 2013; Tang et al., 2013). It was proposed that type II afferents provide a reflex to activate MOC efferents to OHCs (Froud et al., 2015) but this suggestion was refuted by a more recent detailed paper (Maison et al., 2016).

In summary, molecular evolution of cholinergic units associated with the efferent terminals in the vertebrate inner ear and the evolution of the unique mammalian contractile protein *Prestin* is ancestral to the evolution of the ear. Molecular cues enabling efferents to terminate on hair cells possibly evolved before efferents engaged in forming synapses on hair cells to affect the physiology of hair cells. In fact, *Chrna9* and *Chrna10* are expressed on unusual cells such as lymphocytes (Lustig et al., 2001), possibly together with *Chrna7* (Costantini et al., 2015), indicating that these ancestral units have a function besides those associated with synapses (Del Bufalo et al., 2014; Papke, 2014). AChR function on free floating lymphocytes may harken back to that of AChR function in single celled organisms where evolution of these receptors started clearly before multicellular organisms recruited these receptors some 800 million years ago (Figure 1) to function in cholinergic efferent terminals on mechanosensory cells that eventually evolved into inner ear and lateral line mechanosensory hair cells.

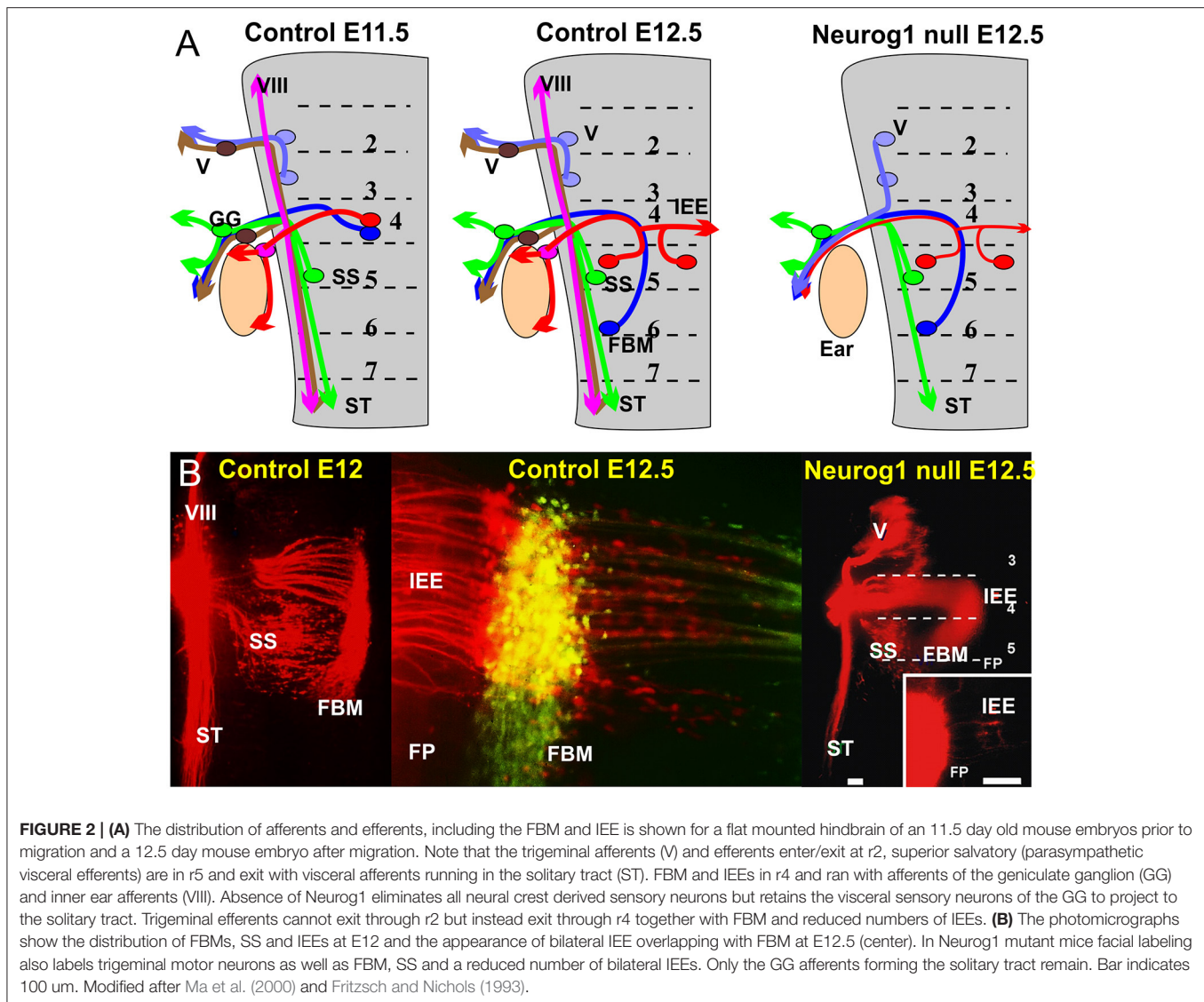
DEVELOPMENT OF IEES SHOWS THEIR ORIGIN WITH AND SEGREGATION FROM FBMS THROUGH DIFFERENTIAL MIGRATION AND AXONAL PROJECTIONS

The IEEs originate from rhombomere 4 (r4; Figure 2) in all vertebrates in which their development has been investigated, and are closely associated with FBM neurons (Fritzsich and Nichols, 1993; Fritzsich et al., 1993; Bruce et al., 1997; Fritzsich, 1998a; Simmons et al., 2011). However, while FBMs can originate from the entire or only the caudal half of r4 (Figure 1) with

variable addition of r3/r5 in different vertebrate lineages (Fritzsich and Nichols, 1993; Fritzsich et al., 1993; Bruce et al., 1997; Fritzsich, 1998a, 1999), IEE apparently always originate in r4 but later can disperse through differential migration to other rhombomeres (Fritzsich, 1999). It is noteworthy that FBMs are among the very few motor neurons that show longitudinal migration (Figure 1). Some motor neurons migrate in some vertebrates to the spinal cord (Fritzsich, 1998b). Migration of FBMs and IEEs depends on various components of the planar cell polarity system such as *Prickle1*, *Vangl2*, and *Celsr* (Qu et al., 2010; Glasco et al., 2012, 2016; Yang et al., 2014) and IEEs respond differently to these very same signals.

In addition to the variable longitudinal migration, IEEs have a variable unilateral or bilateral distribution in several vertebrate lineages (Fritzsich, 1999). The contralateral distribution is achieved either via migration across the floor plate (Fritzsich et al., 1993) or through branching of axons (Cowan et al., 2000). As a consequence, animals with contralateral migrating IEEs have few or no bilaterally projecting IEEs whereas animals with bilaterally branching IEE axons have a variable number of those cells interconnecting both ears (Fritzsich, 1999). Labeling with differently colored tracers show in all instances that IEE and FBM axons overlap in r4 and may even exit together through the facial nerve (Fritzsich et al., 1993; Simmons et al., 2011) before they segregate through differential migration/projection (Müller et al., 2003). Mutant mice bred to lack inner ear afferents through deletion of the basic Helix-Loop-Helix protein *Neurog1* have several contralateral IEEs that project into the facial nerve (Figure 2), indicating that IEE preferentially grow along inner ear afferents (Ma et al., 2000) but can grow along FBM axons in the absence of an afferent ear innervation. In most vertebrates IEEs segregate at the facial nerve root from FBMs but in mammals this segregation is inside the brainstem (Simmons et al., 2011). The molecular mechanisms for the divergence from the initial FBM pathway at the facial genu inside or the facial nerve outside the brainstem remains unclear. An intriguing interaction with fibers of the dorsal acoustic stria in mice implies that IEE may segregate in mammals as an interaction with these second order auditory fibers (Gurung and Fritzsich, 2004) after the unique dorsal cochlear nucleus of mammals evolved in rhombomere 5 (Fritzsich et al., 2006; Maricich et al., 2009). Generating animals without a dorsal cochlear nucleus using targeted deletion of *Ptf1a* (Iskusnykh et al., 2016) could demonstrate causality.

Genes that define branchial and visceral motor neurons (*Phox2b*) in brainstem of mice (Pattyn et al., 1999) also eliminate IEEs, indicating that they derive from branchial motor neurons (Tiveron et al., 2003). While it is clear that IEE share the molecular basis with branchial and visceral motor neuron origin (Tiveron et al., 2003) little is known about the possible molecular basis of efferent segregation from FBM (Simmons et al., 2011). One leading candidate is the transcription factor *Gata3* that shows derailed efferent projection in mutants entirely lacking *Gata3* (Karis et al., 2001). It remained unclear if these effects were due to *Gata3* loss in IEEs, the inner ear, or both. Subsequent conditional deletion of *Gata3* in the ear show normal efferent projections to vestibular organs ruling out a direct effect of afferents (Duncan and Fritzsich, 2013) but leave the



possibility open that Gata3 positive OC fibers navigate selectively along Gata3 positive afferents. Conditional deletion of Gata3 expression using motor neuron-specific cre lines such as *Isl1-cre* (Dvorakova et al., 2016) are needed to further evaluate the function of Gata3 in IEE pathfinding development. The bHLH gene *Ascl1* also affects some aspects of navigation of IEEs (Tiveron et al., 2003).

In summary, IEE develop initially in close proximity or overlapping with FBMs, share molecular cues with FBMs, but segregate through differential projection of axons outside and inside the brain as well as differential longitudinal and radial migration, including migration and or projection of axon branches across the floor plate. Candidate transcription factors are identified that may guide the differential projection and migration of IEEs but more work is needed to support those notions.

EXPERIMENTAL EVIDENCE FOR REROUTING OF SPINAL AND OCULAR MOTOR NEURONS TO BECOME IEEs TO TRANSPLANTED EARS

The close proximity and initial molecular similarity of the IEEs to the FBMs (Roberts and Meredith, 1992) and their similarities during development support the hypothesis that IEEs are rerouted FBMs (Fritzsch et al., 1993; Tiveron et al., 2003). In vertebrates, the ear develops at the rostral boundary of the somites that form out of mesoderm along the notochord (Cooke, 1978; Chung et al., 1989; Huang et al., 1997). In outgroups lacking ears, lancelets (or amphioxus), somites are found extending more rostrally (Bardet et al., 2005). This implies that in craniates, the ear replaces minimally mesoderm but perhaps somites present in craniate ancestors lacking ears (Mallatt and Holland, 2013). Should this be true, then the FBMs that were destined

to innervate such mesoderm or somite-derived muscle fibers may have been rerouted to innervate the ear following the evolution of the ear in ancestral craniates (Fritzsich et al., 2007). In other systems, evolution of sympathetic visceral motor neurons out of somatic motor neurons in the spinal cord and parasympathetic motor neurons out of branchial motor neurons in the brainstem (Fritzsich and Northcutt, 1993; Espinosa-Medina et al., 2016) required those neurons to access a new target that formed out of neural crest in jawed vertebrates (Fritzsich and Northcutt, 1993; Häming et al., 2011; Espinosa-Medina et al., 2014). That certain motor neurons can react plastically to reach different targets is well-known for the ocular motor system and in certain pathologies such Duane's syndrome (Fritzsich et al., 1995; Cheng et al., 2014). Moreover, addition of a limb through FGF-induction or transplantation resulted in rerouting of motor neurons destined to innervate the trunk to innervate the additional limb (Mendell and Hollyday, 1976; Turney et al., 2003).

Motor neurons can be experimentally rerouted to become IEE to the ear by transplanting ears in *Xenopus laevis* embryos caudally to the trunk to replace a somite (Elliott and Fritzsich, 2010) or rostrally into the orbit to replace the eye (Elliott et al., 2013). These two different positions show that both spinal (visceral and/or somatic) motor neurons or brainstem ocular motor neurons reroute to innervate hair cells in the transplanted ear, respectively. Ears transplanted to the trunk or orbit received "efferent" innervation from spinal or ocular motor neurons, respectively, as shown by cholinergic markers (Elliott and Fritzsich, 2010; Elliott et al., 2013) and vesicle-filled terminals (Elliott and Fritzsich, 2010).

In addition to visceral motor neurons acquiring a novel target (Espinosa-Medina et al., 2014, 2016), this is the second experimental evidence testing such evolutionary reorganization to a novel target. We speculate that ear transplantations recapitulate how evolving ears replaced one or more somites/cranial mesoderm capturing the already existing FBMs of chordates (Dufour et al., 2006) to become IEEs. Our data suggest that the ability to become IEEs is not a unique property of FBM neurons but maybe widespread among all types of motor neurons. The ear, unlike other targets of motor innervation (Elliott et al., 2013; Espinosa-Medina et al., 2016), can be innervated by any motor neuron tested thus far. This indicates possibly unique features of inner ear hair cells and may be due to the presence of the more ancestral *Chrna9* and *Chrna10* (Li et al., 2016) on hair cells (Elgoyhen and Franchini, 2011; Katz et al., 2011). Perhaps, then, all motor neurons retain the ability to form synapses on these receptors in all vertebrates, a

hypothesis we are currently testing through ear transplantations in chickens.

Together, these data imply that the formation of IEEs may have two evolutionary and developmental significant steps:

- 1) The conserved nature of the cholinergic receptor associated with hair cells that closely resembles ancestral pentameric cholinergic receptors (Li et al., 2016) capable of interacting with any motor neuron terminal to form a synapse (Elliott and Fritzsich, 2010).
- 2) A chance event that captured already existing chordate FBM axons (Fritzsich and Northcutt, 1993; Dufour et al., 2006) simply because the inner ear evolved in the trajectory of these motor neurons out of preplacodal ectoderm through selective upregulation of *Pax2/8* and other transcription factors (Bouchard et al., 2010; Riddiford and Schlosser, 2016).

It remains unclear how developmental reorganization evolved an ear out of distributed mechanosensory cells (Fritzsich et al., 2007). However, neurons that lose their target, and thus neurotrophic support released from their target, often degenerate and die during a critical period (Gould and Enomoto, 2009; Elliott et al., 2015). An alternate target, in this case the ear, would have provided neurotrophic support (Fritzsich et al., 2004; Green et al., 2012) to maintain the displaced FBMs by the very same trophic molecules that have thus far been identified to support motor neurons such as GDNF, neurturin, artemin, and CNTF (Oppenheim et al., 1995; Bailey and Green, 2014). All vertebrates have these trophic factors associated with afferent development of the ear and motor neuron maintenance (Airaksinen et al., 2006; Fritzsich et al., 2016b), but it remains to be shown when in evolution the motor neuron-specific neurotrophic factors became associated with the ear to generate a precondition to rescue rerouted motor neurons as much as we could show for the experimentally transplanted ears. How the innervation by IEEs of the ear acquired guidance cues to reach the ear remains to be shown (Karis et al., 2001; Battisti et al., 2014; Mao et al., 2014; Coate et al., 2015).

AUTHOR CONTRIBUTIONS

BF Conceived and wrote a partial initial draft, KE completed the draft and edited.

ACKNOWLEDGMENTS

This work was supported by grants from NIH (R01 DC005590, BF; R03 DC005568, KE).

REFERENCES

- Airaksinen, M. S., Holm, L., and Hätingen, T. (2006). Evolution of the GDNF family ligands and receptors. *Brain Behav. Evol.* 68, 181–190. doi: 10.1159/000094087
- Bailey, E. M., and Green, S. H. (2014). Postnatal expression of neurotrophic factors accessible to spiral ganglion neurons in the auditory system of adult hearing and deafened rats. *J. Neurosci.* 34, 13110–13126. doi: 10.1523/JNEUROSCI.1014-14.2014
- Bardet, P.-L., Schubert, M., Horard, B., Holland, L. Z., Laudet, V., Holland, N. D., et al. (2005). Expression of estrogen-receptor related receptors in amphioxus and zebrafish: implications for the evolution of posterior brain segmentation at the invertebrate-to-vertebrate transition. *Evol. Dev.* 7, 223–233. doi: 10.1111/j.1525-142X.2005.05025.x
- Battisti, A. C., Fantetti, K. N., Moyers, B. A., and Fekete, D. M. (2014). A subset of chicken statoacoustic ganglion neurites are repelled by Slit1 and Slit2. *Hear. Res.* 310, 1–12. doi: 10.1016/j.heares.2014.01.003

- Bouchard, M., de Caprona, D., Busslinger, M., Xu, P., and Fritzscht, B. (2010). Pax2 and Pax8 cooperate in mouse inner ear morphogenesis and innervation. *BMC Dev. Biol.* 10:89. doi: 10.1186/1471-213X-10-89
- Bruce, L., Kingsley, J., Nichols, D., and Fritzscht, B. (1997). The development of vestibulocochlear efferents and cochlear afferents in mice. *Int. J. Dev. Neurosci.* 15, 671–692. doi: 10.1016/S0736-5748(96)00120-7
- Burighel, P., Caicci, F., and Manni, L. (2011). Hair cells in non-vertebrate models: lower chordates and molluscs. *Hear. Res.* 273, 14–24. doi: 10.1016/j.heares.2010.03.087
- Cheng, L., Desai, J., Miranda, C. J., Duncan, J. S., Qiu, W., Nugent, A. A., et al. (2014). Human CFEM1 mutations attenuate KIF21A autoinhibition and cause oculomotor axon stalling. *Neuron* 82, 334–349. doi: 10.1016/j.neuron.2014.02.038
- Chung, H.-M., Neff, A. W., and Malacinski, G. M. (1989). Autonomous death of amphibian (*Xenopus laevis*) cranial myotomes. *J. Exp. Zool.* 251, 290–299. doi: 10.1002/jez.1402510305
- Coate, T. M., Spita, N. A., Zhang, K. D., Isgrig, K. T., and Kelley, M. W. (2015). Neuropilin-2/Semaphorin-3F-mediated repulsion promotes inner hair cell innervation by spiral ganglion neurons. *eLife* 4:e07830. doi: 10.7554/eLife.07830
- Cooke, J. (1978). Somite abnormalities caused by short heat shocks to pre-neurula stages of *Xenopus laevis*. *J. Embryol. Exp. Morphol.* 45, 283–294.
- Costantini, T. W., Dang, X., Yurchyshyna, M. V., Coimbra, R., Eliceiri, B. P., and Baird, A. (2015). A human-specific $\alpha 7$ -nicotinic acetylcholine receptor gene in human leukocytes: identification, regulation and the consequences of CHRFAM7A expression. *Mol. Med.* 21, 323. doi: 10.2119/molmed.2015.00018
- Cowan, C. A., Yokoyama, N., Bianchi, L. M., Henkemeyer, M., and Fritzscht, B. (2000). EphB2 guides axons at the midline and is necessary for normal vestibular function. *Neuron* 26, 417–430. doi: 10.1016/S0896-6273(00)81174-5
- Dallos, P., Wu, X., Cheatham, M. A., Gao, J., Zheng, J., Anderson, C. T., et al. (2008). Prestin-based outer hair cell motility is necessary for mammalian cochlear amplification. *Neuron* 58, 333–339. doi: 10.1016/j.neuron.2008.02.028
- Del Bufalo, A., Cesario, A., Salinaro, G., Fini, M., and Russo, P. (2014). Alpha9Alpha10 nicotinic acetylcholine receptors as target for the treatment of chronic pain. *Curr. Pharm. Des.* 20, 6042–6047. doi: 10.2174/1381612820666140314150634
- Dufour, H. D., Chettouh, Z., Deyts, C., De Rosa, R., Goridis, C., Joly, J. S., et al. (2006). Precranial origin of cranial motoneurons. *Proc. Natl. Acad. Sci. U.S.A.* 103, 8727–8732. doi: 10.1073/pnas.0600805103
- Duncan, J. S., and Fritzscht, B. (2013). Continued expression of GATA3 is necessary for cochlear neurosensory development. *PLoS ONE* 8:e62046. doi: 10.1371/journal.pone.0062046
- Dvorakova, M., Jahan, I., Macova, I., Chumak, T., Bohuslavova, R., Syka, J., et al. (2016). Incomplete and delayed Sox2 deletion defines residual ear neurosensory development and maintenance. *Sci. Rep.* 6:38253. doi: 10.1038/srep38253
- Elgoyhen, A. B., and Franchini, L. F. (2011). Prestin and the cholinergic receptor of hair cells: positively-selected proteins in mammals. *Hear. Res.* 273, 100–108. doi: 10.1016/j.heares.2009.12.028
- Elgoyhen, A. B., Johnson, D. S., Boulter, J., Vetter, D. E., and Heinemann, S. (1994). $\alpha 9$: an acetylcholine receptor with novel pharmacological properties expressed in rat cochlear hair cells. *Cell* 79, 705–715. doi: 10.1016/0092-8674(94)90555-X
- Elgoyhen, A. B., Vetter, D. E., Katz, E., Rothlin, C. V., Heinemann, S. F., and Boulter, J. (2001). $\alpha 10$: a determinant of nicotinic cholinergic receptor function in mammalian vestibular and cochlear mechanosensory hair cells. *Proc. Natl. Acad. Sci. U.S.A.* 98, 3501–3506. doi: 10.1073/pnas.051622798
- Elliott, K. L., and Fritzscht, B. (2010). Transplantation of *Xenopus laevis* ears reveals the ability to form afferent and efferent connections with the spinal cord. *Int. J. Dev. Biol.* 54, 1443–1451. doi: 10.1387/ijdb.103061ke
- Elliott, K. L., Houston, D. W., DeCook, R., and Fritzscht, B. (2015). Ear manipulations reveal a critical period for survival and dendritic development at the single-cell level in Mauthner neurons. *Dev. Neurobiol.* 75, 1339–1351. doi: 10.1002/dneu.22287
- Elliott, K. L., Houston, D. W., and Fritzscht, B. (2013). Transplantation of *Xenopus laevis* tissues to determine the ability of motor neurons to acquire a novel target. *PLoS ONE* 8:e55541. doi: 10.1371/journal.pone.0055541
- Espinosa-Medina, I., Outin, E., Picard, C., Chettouh, Z., Dymecki, S., Consalez, G., et al. (2014). Parasympathetic ganglia derive from Schwann cell precursors. *Science* 345, 87–90. doi: 10.1126/science.1253286
- Espinosa-Medina, I., Saha, O., Boismoreau, F., Chettouh, Z., Rossi, F., Richardson, W., et al. (2016). The sacral autonomic outflow is sympathetic. *Science* 354, 893–897. doi: 10.1126/science.aah5454
- Franchini, L. F., and Elgoyhen, A. B. (2006). Adaptive evolution in mammalian proteins involved in cochlear outer hair cell electromotility. *Mol. Phylogenet. Evol.* 41, 622–635. doi: 10.1016/j.ympev.2006.05.042
- Fritzscht, B. (1998a). Evolution of the vestibulo-ocular system. *Otolaryngol. Head Neck Surg.* 119, 182–192. doi: 10.1016/S0194-5998(98)70053-1
- Fritzscht, B. (1998b). Of mice and genes: evolution of vertebrate brain development. *Brain Behav. Evol.* 52, 207–217. doi: 10.1016/S0194-5998(98)70053-1
- Fritzscht, B. (1999). “Ontogenetic and evolutionary evidence for the motoneuron nature of vestibular and cochlear efferents,” in *The Efferent Auditory System: Basic Science and Clinical Applications*, ed C. I. Berlin (New York, NY: Singular), 31–59.
- Fritzscht, B., Beisel, K. W., Pauley, S., and Soukup, G. (2007). Molecular evolution of the vertebrate mechanosensory cell and ear. *Int. J. Dev. Biol.* 51, 663. doi: 10.1387/ijdb.072367bf
- Fritzscht, B., Christensen, M., and Nichols, D. (1993). Fiber pathways and positional changes in efferent perikarya of 2.5- to 7-day chick embryos as revealed with dil and dextran amiens. *J. Neurobiol.* 24, 1481–1499. doi: 10.1002/neu.480241104
- Fritzscht, B., Dubuc, R., Ohta, Y., and Grillner, S. (1989). Efferents to the labyrinth of the river lamprey (*Lampetra fluviatilis*) as revealed with retrograde tracing techniques. *Neurosci. Lett.* 96, 241–246. doi: 10.1016/0304-3940(89)90385-6
- Fritzscht, B., Duncan, J. S., Kersigo, J., Gray, B., and Elliott, K. L. (2016a). “Neuroanatomical tracing techniques in the ear: history, state of the art, and future developments,” in *Auditory and Vestibular Research: Methods and Protocols*, ed B. sokolowski (New York, NY: Springer Science+Business Media), 243–262.
- Fritzscht, B., Kersigo, J., Yang, T., Jahan, I., and Pan, N. (2016b). “Neurotrophic factor function during ear development: expression changes define critical phases for neuronal viability,” in *The Primary Auditory Neurons of the Mammalian Cochlea*, eds A. Dabdoub, B. Fritzscht, A. N. Popper, and R. R. Fay (New York, NY: Springer), 49–84.
- Fritzscht, B., and Nichols, D. (1993). DiI reveals a prenatal arrival of efferents at the differentiating otocyst of mice. *Hear. Res.* 65, 51–60. doi: 10.1016/0378-5955(93)90200-K
- Fritzscht, B., Nichols, D., Echelard, Y., and McMahon, A. (1995). Development of midbrain and anterior hindbrain ocular motoneurons in normal and Wnt-1 knockout mice. *J. Neurobiol.* 27, 457–469. doi: 10.1002/neu.480270403
- Fritzscht, B., and Northcutt, R. G. (1993). Cranial and spinal nerve organization in amphioxus and lampreys: evidence for an ancestral craniate pattern. *Acta Anat.* 148, 96–109. doi: 10.1159/000147529
- Fritzscht, B., Pan, N., Jahan, I., Duncan, J. S., Kopecky, B. J., Elliott, K. L., et al. (2013). Evolution and development of the tetrapod auditory system: an organ of Corti-centric perspective. *Evol. Dev.* 15, 63–79. doi: 10.1111/ede.12015
- Fritzscht, B., Pauley, S., Feng, F., Matei, V., and Nichols, D. (2006). The molecular and developmental basis of the evolution of the vertebrate auditory system. *Int. J. Comp. Psychol.* 19, 1–25
- Fritzscht, B., Sonntag, R., Dubuc, R., Ohta, Y., and Grillner, S. (1990). Organization of the six motor nuclei innervating the ocular muscles in lamprey. *J. Comp. Neurol.* 294, 491–506. doi: 10.1002/cne.902940402
- Fritzscht, B., Tessarollo, L., Coppola, E., and Reichardt, L. F. (2004). “Neurotrophins in the ear: their roles in sensory neuron survival and fiber guidance,” in *Progress in Brain Research*, eds A. Luigi and C. Laura (Amsterdam: Elsevier), 265–278.
- Fritzscht, B., and Wahnschaffe, U. (1987). Electron microscopical evidence for common inner ear and lateral line efferents in urodeles. *Neurosci. Lett.* 81, 48–52. doi: 10.1016/0304-3940(87)90338-7
- Froud, K. E., Wong, A. C., Cederholm, J. M., Klugmann, M., Sandow, S. L., Julien, J. P., et al. (2015). Type II spiral ganglion afferent neurons drive medial olivocochlear reflex suppression of the cochlear amplifier. *Nat. Commun.* 6, 7115. doi: 10.1038/ncomms8115
- Glasco, D. M., Pike, W., Qu, Y., Reustle, L., Misra, K., Di Bonito, M., et al. (2016). The atypical cadherin Celsr1 functions non-cell autonomously to block rostral migration of facial branchiomotor neurons in mice. *Dev. Biol.* 417, 40–49. doi: 10.1016/j.ydbio.2016.07.004
- Glasco, D. M., Sittaramane, V., Bryant, W., Fritzscht, B., Sawant, A., Paudyal, A., et al. (2012). The mouse Wnt/PCP protein Vangl2 is necessary for migration

- of facial branchiomotor neurons, and functions independently of Dishevelled. *Dev. Biol.* 369, 211–222. doi: 10.1016/j.ydbio.2012.06.021
- Gould, T. W., and Enomoto, H. (2009). Neurotrophic modulation of motor neuron development. *Neuroscientist* 15, 105–116. doi: 10.1177/1073858408324787
- Goutman, J. D., Elgoyhen, A. B., and Gómez-Casati, M. E. (2015). Cochlear hair cells: the sound-sensing machines. *FEBS Lett.* 589, 3354–3361. doi: 10.1016/j.febslet.2015.08.030
- Green, S. H., Bailey, E., Wang, Q., and Davis, R. L. (2012). The Trk A, B, C's of Neurotrophins in the Cochlea. *Anat. Rec.* 295, 1877–1895. doi: 10.1002/ar.22587
- Gurung, B., and Fritzsich, B. (2004). Time course of embryonic midbrain and thalamic auditory connection development in mice as revealed by carbocyanine dye tracing. *J. Comp. Neurol.* 479, 309–327. doi: 10.1002/cne.20328
- Häming, D., Simoes-Costa, M., Uy, B., Valencia, J., Sauka-Spengler, T., and Bronner-Fraser, M. (2011). Expression of sympathetic nervous system genes in Lamprey suggests their recruitment for specification of a new vertebrate feature. *PLoS ONE* 6:e26543. doi: 10.1371/journal.pone.0026543
- Hellmann, B., and Fritzsich, B. (1996). Neuroanatomical and histochemical evidence for the presence of common lateral line and inner ear efferents and of efferents to the basilar papilla in a frog, *Xenopus laevis*. *Brain Behav. Evol.* 47, 185–194. doi: 10.1159/000113238
- Huang, R., Zhi, Q., Ordahl, P., and Christ, B. (1997). The fate of the first avian somite. *Anat. Embryol.* 195, 435–449. doi: 10.1007/s004290050063
- Iskusnykh, I. Y., Steshina, E. Y., and Chizhikov, V. V. (2016). Loss of Ptf1a leads to a widespread cell-fate misspecification in the brainstem, affecting the development of somatosensory and viscerosensory nuclei. *J. Neurosci.* 36, 2691–2710. doi: 10.1523/JNEUROSCI.2526-15.2016
- Jørgensen, J., Shichiri, M., and Geneser, F. (1998). Morphology of the hagfish inner ear. *Acta Zool.* 79, 251–256. doi: 10.1111/j.1463-6395.1998.tb01163.x
- Karis, A., Pata, I., van Doorninck, J. H., Grosveld, F., de Zeeuw, C. I., de Caprona, D., et al. (2001). Transcription factor GATA-3 alters pathway selection of olivocochlear neurons and affects morphogenesis of the ear. *J. Comp. Neurol.* 429, 615–630. doi: 10.1002/1096-9861(20010122)429:4<615::AID-CNE8>3.0.CO;2-F
- Katz, E., Elgoyhen, A. B., and Fuchs, P. A. (2011). “Cholinergic inhibition of hair cells,” in *Auditory and Vestibular Efferents*, eds D. K. Ryugo, R. R. Fay, and A. N. Popper (New York, NY: Springer), 103–133.
- Lamb, T. D. (2013). Evolution of phototransduction, vertebrate photoreceptors and retina. *Prog. Retina Eye Res.* 36, 52–119. doi: 10.1016/j.preteyeres.2013.06.001
- Li, M. D., Yang, Z., Guo, H., and Dash, B. (2016). Evolutionary relationship of nicotinic acetylcholine receptor subunits in both vertebrate and invertebrate species. *Nicotinic Acetylcholine Recept. Technol.* 117, 227–254. doi: 10.1007/978-1-4939-3768-4_12
- Lustig, L. R., Peng, H., Hiel, H., Yamamoto, T., and Fuchs, P. A. (2001). Molecular cloning and mapping of the human nicotinic acetylcholine receptor $\alpha 10$ (CHRNA10). *Genomics* 73, 272–283. doi: 10.1006/geno.2000.6503
- Ma, Q., Anderson, D. J., and Fritzsich, B. (2000). Neurogenin 1 null mutant ears develop fewer, morphologically normal hair cells in smaller sensory epithelia devoid of innervation. *J. Assoc. Res. Otolaryngol.* 1, 129–143. doi: 10.1007/s101620010017
- Maison, S., Liberman, L. D., and Liberman, M. C. (2016). Type II cochlear ganglion neurons do not drive the olivocochlear reflex: re-examination of the cochlear phenotype in peripherin knock-out mice. *eNeuro* 3:ENEURO.0207–16.2016. doi: 10.1523/ENEURO.0207-16.2016
- Mallatt, J., and Holland, N. (2013). Pikaia gracilens Walcott: stem chordate, or already specialized in the Cambrian? *J. Exp. Zool. B Mol. Dev. Evol.* 320, 247–271. doi: 10.1002/jez.b.22500
- Manns, M., and Fritzsich, B. (1991). The eye in the brain: retinoic acid effects morphogenesis of the eye and pathway selection of axons but not the differentiation of the retina in *Xenopus laevis*. *Neurosci. Lett.* 127, 150–154. doi: 10.1016/0304-3940(91)90782-O
- Mao, Y., Reiprich, S., Wegner, M., and Fritzsich, B. (2014). Targeted deletion of Sox10 by Wnt1-cre defects neuronal migration and projection in the mouse inner ear. *PLoS ONE* 9:e94580. doi: 10.1371/journal.pone.0094580
- Maricich, S. M., Xia, A., Mathes, E. L., Wang, V. Y., Oghalai, J. S., Fritzsich, B., et al. (2009). Atoh1-lineal neurons are required for hearing and for the survival of neurons in the spiral ganglion and brainstem accessory auditory nuclei. *J. Neurosci.* 29, 11123–11133. doi: 10.1523/JNEUROSCI.2232-09.2009
- Mendell, L. M., and Hollyday, M. (1976). “Spinal Reflexes in anurans with an altered periphery,” in *Frog Neurobiology: A Handbook*, eds R. Linas and W. Precht (Berlin; Heidelberg: Springer), 793–810.
- Müller, M., Jabs, N., Lork, D. E., Fritzsich, B., and Sander, M. (2003). Nkx6. 1 controls migration and axon pathfinding of cranial branchiomotoneurons. *Development* 130, 5815–5826. doi: 10.1242/dev.00815
- Northcutt, R. G. (2005). The new head hypothesis revisited. *J. Exp. Zool. B Mol. Dev. Evol.* 304, 274–297. doi: 10.1002/jez.b.21063
- Okoruwa, O. E., Weston, M. D., Sanjeevi, D. C., Millemon, A. R., Fritzsich, B., Hallworth, R., et al. (2008). Evolutionary insights into the unique electromotility motor of mammalian outer hair cells. *Evol. Dev.* 10, 300–315. doi: 10.1111/j.1525-142X.2008.00239.x
- Oppenheim, R. W., Houenou, L. J., Johnson, J. E., Lin, L. F., Li, L., Lo, A. C., et al. (1995). Developing motor neurons rescued from programmed and axotomy-induced cell death by GDNF. *Nature* 373, 344–346. doi: 10.1038/373344a0
- Osman, A. A., Schrader, A. D., Hawkes, A. J., Akil, O., Bergeron, A., Lustig, L. R., et al. (2008). Muscle-like nicotinic receptor accessory molecules in sensory hair cells of the inner ear. *Mol. Cell. Neurosci.* 38, 153–169. doi: 10.1016/j.mcn.2008.02.008
- Papke, R. L. (2014). Merging old and new perspectives on nicotinic acetylcholine receptors. *Biochem. Pharmacol.* 89, 1–11. doi: 10.1016/j.bcp.2014.01.029
- Pattyn, A., Morin, X., Cremer, H., Goridis, C., and Brunet, J.-F. (1999). The homeobox gene Phox2b is essential for the development of autonomic neural crest derivatives. *Nature* 399, 366–370. doi: 10.1038/20700
- Qu, Y., Glasco, D. M., Zhou, L., Sawant, A., Ravnin, A., Fritzsich, B., et al. (2010). Atypical cadherins Celsr1-3 differentially regulate migration of facial branchiomotor neurons in mice. *J. Neurosci.* 30, 9392–9401. doi: 10.1523/JNEUROSCI.0124-10.2010
- Repérant, J., Médina, M., Ward, R., Miceli, D., Kenigfest, N., Rio, J., et al. (2007). The evolution of the centrifugal visual system of vertebrates. A cladistic analysis and new hypotheses. *Brain Res. Rev.* 53, 161–197. doi: 10.1016/j.brainresrev.2006.08.004
- Riddiford, N., and Schlosser, G. (2016). Dissecting the pre-placodal transcriptome to reveal presumptive direct targets of Six1 and Eya1 in cranial placodes. *Elife* 5:e17666. doi: 10.7554/eLife.17666
- Roberts, B. L., and Meredith, G. E. (1992). “The efferent innervation of the ear: variations on an enigma,” in *The Evolutionary Biology of Hearing*, eds D. B. Webster, R. R. Fay, and A. N. Popper (New York, NY: Springer), 185–210.
- Roux, I., Wu, J. S., McIntosh, J. M., and Glowatzki, E. (2016). Assessment of the expression and role of the $\alpha 1$ -nAChR subunit in efferent cholinergic function during the development of the mammalian cochlea. *J. Neurophysiol.* 116, 479–492. doi: 10.1152/jn.01038.2015
- Sienknecht, U. J., Köppl, C., and Fritzsich, B. (2014). Evolution and development of hair cell polarity and efferent function in the inner ear. *Brain Behav. Evol.* 83, 150–161. doi: 10.1159/000357752
- Simmons, D., Duncan, J., de Caprona, D. C., and Fritzsich, B. (2011). “Development of the inner ear efferent system,” in *Auditory and Vestibular Efferents*, eds K. D. Ryugo, R. R. Fay, and A. N. Popper (New York, NY: Springer), 187–216.
- Smith, J. J., Kuraku, S., Holt, C., Sauka-Spengler, T., Jiang, N., Campbell, M. S., et al. (2013). Sequencing of the sea lamprey (*Petromyzon marinus*) genome provides insights into vertebrate evolution. *Nat. Genet.* 45, 415–421. doi: 10.1038/ng.2568
- Tan, X., Pecka, J. L., Tang, J., Okoruwa, O. E., Zhang, Q., Beisel, K. W., et al. (2011). From zebrafish to mammal: functional evolution of prestin, the motor protein of cochlear outer hair cells. *J. Neurophysiol.* 105, 36–44. doi: 10.1152/jn.00234.2010
- Tang, J., Pecka, J. L., Fritzsich, B., Beisel, K. W., and He, D. Z. (2013). Lizard and frog prestin: evolutionary insight into functional changes. *PLoS ONE* 8:e54388. doi: 10.1371/journal.pone.0054388
- Tiveron, M.-C., Pattyn, A., Hirsch, R., and Brunet, J.-F. (2003). Role of Phox2b and Mash1 in the generation of the vestibular efferent nucleus. *Dev. Biol.* 260, 46–57. doi: 10.1016/S0012-1606(03)00213-6
- Turney, B. W., Rowan-Hull, A. M., and Brown, J. M. (2003). The innervation of FGF-induced additional limbs in the chick embryo. *J. Anat.* 202, 83–92. doi: 10.1046/j.1469-7580.2003.00131.x

- Ward, R., Repérant, J., and Miceli, D. (1991). "The centrifugal visual system: what can comparative studies tell us about its evolution and possible function?" in *The Changing Visual System*, eds P. Bagnoli and W. Hodos (London: Springer), 61–76.
- Yang, T., Bassuk, A. G., Stricker, S., and Fritzsich, B. (2014). Prickle1 is necessary for the caudal migration of murine facial branchiomotor neurons. *Cell Tissue Res.* 357, 549–561. doi: 10.1007/s00441-014-1925-6
- Zheng, J., Shen, W., He, D. Z., Long, K. B., Madison, L. D., and Dallos, P. (2000). Prestin is the motor protein of cochlear outer hair cells. *Nature* 405, 149–155. doi: 10.1038/35012009

Conflict of Interest Statement: The authors declare that the research was conducted in the absence of any commercial or financial relationships that could be construed as a potential conflict of interest.

Copyright © 2017 Fritzsich and Elliott. This is an open-access article distributed under the terms of the Creative Commons Attribution License (CC BY). The use, distribution or reproduction in other forums is permitted, provided the original author(s) or licensor are credited and that the original publication in this journal is cited, in accordance with accepted academic practice. No use, distribution or reproduction is permitted which does not comply with these terms.