



OPEN ACCESS

APPROVED BY
Frontiers Editorial Office,
Frontiers Media SA, Switzerland

*CORRESPONDENCE

Jia Yao

✉ yaojia2006@163.com

Yu Chen

✉ chybeyond1071@ccmu.edu.cn

RECEIVED 26 February 2025

ACCEPTED 27 February 2025

PUBLISHED 12 March 2025

CITATION

Yao R, Xu G, Fu X, Zhang W, Wang H, Chen Y and Yao J (2025) Corrigendum: Clinical characteristics and the role of IL-6 in acute-on-chronic liver failure patients with or without COVID-19: a multicenter paired cohort study.

Front. Cell. Infect. Microbiol. 15:1584105.

doi: 10.3389/fcimb.2025.1584105

COPYRIGHT

© 2025 Yao, Xu, Fu, Zhang, Wang, Chen and Yao. This is an open-access article distributed under the terms of the [Creative Commons Attribution License \(CC BY\)](https://creativecommons.org/licenses/by/4.0/). The use, distribution or reproduction in other forums is permitted, provided the original author(s) and the copyright owner(s) are credited and that the original publication in this journal is cited, in accordance with accepted academic practice. No use, distribution or reproduction is permitted which does not comply with these terms.

Corrigendum: Clinical characteristics and the role of IL-6 in acute-on-chronic liver failure patients with or without COVID-19: a multicenter paired cohort study

Ruoyu Yao¹, Guofen Xu¹, Xiujuan Fu¹, Wenrui Zhang¹, Han Wang¹, Yu Chen^{2*} and Jia Yao^{1*}

¹Department of Gastroenterology, Third Hospital of Shanxi Medical University, Shanxi Bethune Hospital, Shanxi Academy of Medical Sciences, Tongji Shanxi Hospital, Taiyuan, China, ²Fourth Department of Liver Disease (Difficult and Complicated Liver Diseases and Artificial Liver Center), Beijing You'an Hospital Affiliated to Capital Medical University, Beijing, China

KEYWORDS

acute-on-chronic liver failure, COVID-19, SARS-CoV-2, mortality, prognosis, IL-6

A Corrigendum on

Clinical characteristics and the role of IL-6 in acute-on-chronic liver failure patients with or without COVID-19: a multicenter paired cohort study

By Yao R, Xu G, Fu X, Zhang W, Wang H, Chen Y and Yao J (2025) *Front. Cell. Infect. Microbiol.* 14:1471974. doi: 10.3389/fcimb.2024.1471974

In the published article, there was an error in **Figures 3** and **4** as published. The images for **Figures 3** and **4** were swapped in order. The corrected **Figures 3** and **4** and their captions appear below.

In the published article, there was an error in **Table 1** as published. The category headings for indicators were omitted in **Table 1**. The corrected **Table 1** and its caption appear below.

The authors apologize for this error and state that this does not change the scientific conclusions of the article in any way. The original article has been updated.

Publisher's note

All claims expressed in this article are solely those of the authors and do not necessarily represent those of their affiliated organizations, or those of the publisher, the editors and the reviewers. Any product that may be evaluated in this article, or claim that may be made by its manufacturer, is not guaranteed or endorsed by the publisher.

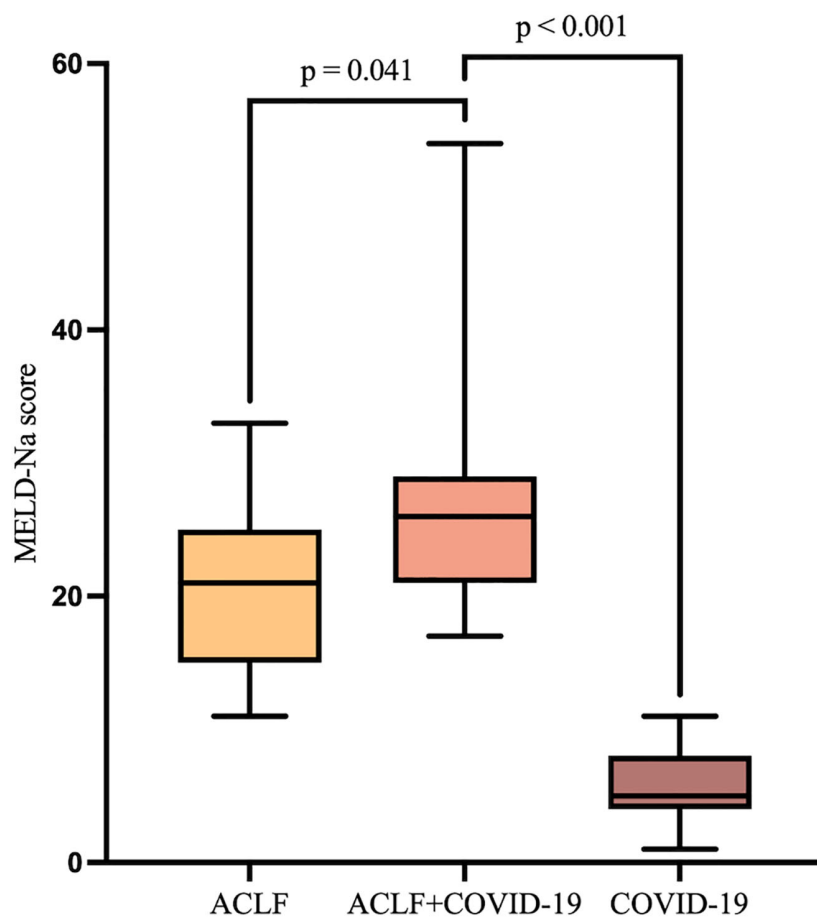


FIGURE 3 MELD-Na scores of patients in the ACLF, ACLF+COVID-19, and COVID-19 groups one week after admission.

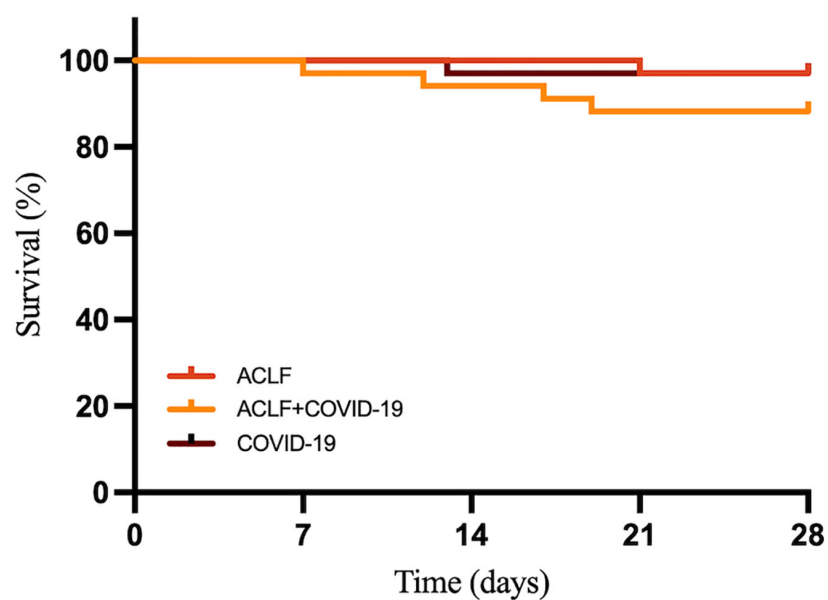


FIGURE 4 The 28-day survival curves of ACLF, ACLF+COVID-19, and COVID-19 groups.

TABLE 1 Basic features of patients in the three groups at admission.

	ACLF group (n=34)	ACLF+COVID-19 group (n=34)	COVID-19 group (n=34)	^a P-value	^b P-value
Age, years	52 ± 9.67	52.82 ± 9.89	52.71 ± 10.01	0.73	0.769
Male, No. (%)	23 (67.65%)	23 (67.65%)	23 (67.65%)	1	1
Etiology					
HBV/Alcohol/Drug/AIH/Other, No.	11/16/2/3/2	11/16/1/3/3	–	1	–
Comorbidity					
T2DM, No. (%)	2 (5.88%)	8 (23.53%)	14 (41.18%)	0.04	0.12
Hypertension, No. (%)	8 (23.53%)	6 (17.65%)	12 (35.29%)	0.549	0.099
CVD, No. (%)	1 (2.94%)	2 (5.88%)	13 (38.24%)	1	0.001
Complication					
Ascites, No. (%)	29 (85.29%)	30 (88.24%)	0 (0%)	1	<0.001
HE, No. (%)	5 (14.71%)	14 (41.18%)	0 (0%)	0.015	<0.001
Blood Test Parameter					
ALT, IU/L	137.1 (42.2-377.7)	35.3 (21.93-348.5)	33.69 ± 24.67	0.191	0.165
AST, IU/L	328 (82.3-488.4)	113.2 (31.25-236)	26.7 (20.8-34.6)	0.237	0.001
TBIL, umol/L	390.84 ± 175.58	263.85 ± 188.11	15.03 ± 5.5	0.066	<0.001
DBIL, umol/L	288 (134.7-388.6)	173.9 (45.83-371.6)	3.2 (2.4-4.8)	0.101	<0.001
ALB, g/L	27.92 ± 3.49	30.07 ± 6.01	38.45 ± 5.03	0.242	<0.001
BUN, umol/L	4.2 (3.03-9.53)	8.65 (3.63-15.6)	5.63 ± 1.65	0.291	0.144
Cr, mmol/L	90 (75.4-125.1)	84.75 (70.5-141.3)	91.23 ± 25.84	0.917	0.548
K ⁺ , mmol/L	3.72 ± 0.8	3.83 ± 0.73	3.77 ± 0.26	0.682	0.761
Na ⁺ , mmol/L	133.79 ± 6.07	134.69 ± 5.26	136.34 ± 3.62	0.67	0.325
PT, s	22.39 ± 6.81	25.22 ± 5.34	11.8 (10.9-12.5)	0.215	<0.001
INR	1.91 (1.61-2.26)	2.36 (1.87-2.62)	1.09 (1.01-1.13)	0.174	<0.001
DD, ng/mL	1260 (953-3268)	1060.5 (309.25-3506.5)	169.13 ± 88.73	0.359	0.001
WBC, ×10 ⁹ /L	7.12 ± 2.87	9.22 ± 6.04	6.21 ± 2.83	0.234	0.071
Hb, g/L	117.47 ± 30.09	98.47 ± 32.99	140.27 ± 14.69	0.111	<0.001
PLT, ×10 ⁹ /L	90 (77-167)	55.5 (24-99)	180 (124-225)	0.016	<0.001
Neutrophil, ×10 ⁹ /L	5.05 ± 2.54	7.54 ± 5.92	4.27 ± 2.25	0.145	0.029
Lymphocyte, ×10 ⁹ /L	1.13 ± 0.59	0.86 ± 0.67	1.23 ± 0.82	0.254	0.11
Clinical Score					
MELD-Na score	26 ± 8	27 ± 13	8 ± 3	0.932	<0.001
AARC score	10 ± 2	10 ± 2	–	1	–
AARC score grade I	4 (11.76%)	3 (8.82%)	–	1	–
AARC score grade II	20 (58.82%)	20 (58.82%)	–	1	–
AARC score grade III	10 (29.41%)	11 (32.35%)	–	0.793	–
SOFA score	7 (6-9)	8 (7-9)	–	0.215	–

^aP-value: Comparison between ACLF+COVID-19 group and ACLF group. ^bP-value: Comparison between ACLF+COVID-19 group and COVID-19 group. HBV, hepatitis B virus; AIH, autoimmune hepatitis; T2DM, type 2 diabetes mellitus; CVD, cardiovascular disease; HE, hepatic encephalopathy; ALT, alanine aminotransferase; AST, aspartate aminotransferase; TBIL, total bilirubin; DBIL, direct bilirubin; ALB, albumin; BUN, blood urea nitrogen; Cr, creatinine; PT, prothrombin time; INR, international normalized ratio; DD, D-dimer; WBC, white blood cell; Hb, hemoglobin; PLT, platelets.