



OPEN ACCESS

EDITED BY
Sudhir Kumar,
Iowa State University, United States

REVIEWED BY
Chinmay V. Tikhe,
Johns Hopkins University, United States
Oleg Tolstenkov,
University of Bergen, Norway

*CORRESPONDENCE
Qiang Huang
✉ qiang-huang@live.com

RECEIVED 07 November 2024
ACCEPTED 31 January 2025
PUBLISHED 17 February 2025

CITATION
Wei X and Huang Q (2025) Distinct virulence of the microsporidian parasite in honey bees competing habitat. *Front. Cell. Infect. Microbiol.* 15:1524197. doi: 10.3389/fcimb.2025.1524197

COPYRIGHT
© 2025 Wei and Huang. This is an open-access article distributed under the terms of the [Creative Commons Attribution License \(CC BY\)](https://creativecommons.org/licenses/by/4.0/). The use, distribution or reproduction in other forums is permitted, provided the original author(s) and the copyright owner(s) are credited and that the original publication in this journal is cited, in accordance with accepted academic practice. No use, distribution or reproduction is permitted which does not comply with these terms.

Distinct virulence of the microsporidian parasite in honey bees competing habitat

Xiuxiu Wei and Qiang Huang*

Honeybee Research Institute, Jiangxi Agricultural University, Nanchang, China

In natural ecosystems, parasites often infect multiple host species, particularly when hosts share habitats, facilitating host-to-host transmission and altering traditional host-parasite coevolution dynamics. This study examines the microsporidian parasite *Nosema ceranae* in Eastern honey bees (*Apis cerana*) and Western honey bees (*Apis mellifera*), assessing its virulence and proliferation dynamics. Using inoculation experiments, we measured bee mortality and parasite spore loads to infer virulence and proliferation. Additionally, time-series transcriptome analysis of both bees and parasites provide insights into host-pathogen interactions. The results reveal that *N. ceranae* produces more spores with lower mortality in *A. mellifera* but causes higher mortality with lower spore production in *A. cerana*. The parasite also suppresses host gene expression, with stronger suppression observed in *A. cerana*. These findings suggest that *N. ceranae* is adapted for low virulence and high proliferation in *A. mellifera* but exhibits high virulence and limited proliferation in *A. cerana*. This study highlights the evolution of distinct trade-offs between virulence and proliferation in a multi-host system, offering valuable insights into parasite-host dynamics and their ecological implications.

KEYWORDS

Nosema ceranae, host switch, habitat competition, selection, mortality

1 Introduction

Host mortality typically assesses parasite virulence, which is not static but evolves depending on host ecology (Gowler et al., 2023). Most evolutionary virulence theories connect the trade-off between the parasite and host fitness. For example, high parasite proliferation increases the transmission to other individuals. However, high proliferation may kill the host rapidly and reduce parasite transmission (de Roode et al., 2008). Thus, balanced transmission and virulence were expected in co-evolved host-parasite (Acevedo et al., 2019).

In natural ecosystems, parasites migrate and explore alternative host organisms. The phylogenetic relationship and proximity of the host species influence the success of host shifting, where closely related species most likely share parasites (Engelstädter and Fortuna, 2019). For example, *Nosema ceranae* infects both the Asian honey bee *Apis cerana* and the European honey bee *Apis mellifera* (Fries et al., 1996; Higes et al., 2007). The infection starts from ingesting spore-contaminated nectar. The spores germinate in the midgut lumen and inject the sporoplasm into the epithelial cells through the polar tube (Gisder et al., 2011). The infected honey bees show suppressed apoptosis (Higes et al., 2013), immature aging (Paris et al., 2018), shortened life span (Eiri et al., 2015), and impaired flight (Gage et al., 2018).

In Asia, the two honey bee species compete for habitats and shelter resources, and the prevalence of the parasite *N. ceranae* has been over 70% in both bee species (Li et al., 2012; Yang et al., 2013; Jack et al., 2016). Thus, the chance is high that the parasite switches between the two honey bee species back and forth (Graystock et al., 2015). *N. ceranae* infection changes the global gene expression in both European and Asia honey bees (Holt et al., 2013; Fan et al., 2022). The parasite infection causes colony failure in European honey bees (Higes et al., 2008; Botías et al., 2013). Comparatively, its virulence in Asia honey bees is unclear. Previously, we found that the host habitat sharing increases the parasite gene flow (Ke et al., 2022). In this follow-up study, we use two honey bee species and a microsporidian parasite to investigate how host habitat sharing shapes the parasite virulence. We find a distinct trade-off between virulence and proliferation in the two closely related honey bees in a shared habitat.

2 Materials and methods

2.1 Ethical statement

The honey bees *Apis mellifera* and *Apis cerana* are neither protected nor endangered species. Ethical approval is not required for this study.

2.2 Hosts and parasite sources

We designed a two-by-two factorial experiment to study parasite virulence and proliferation in two honey bee species. We used two parasite sources P_{Acer} (Parasite spores purified from the honey bee *Apis cerana*) and P_{Ame1} (Parasite spores purified from the honey bee *Apis mellifera*), as well as two host species H_{Acer} (Host honey bee *Apis cerana*) and H_{Ame1} (Host honey bees *Apis mellifera*) (Supplementary Table S1). We combined bees from different hives for the inoculation, and uninfected bees (H_{Acer} and H_{Ame1}) as controls for this multi-host-parasite experiment. The honey bee colonies are maintained in the experimental apiary at Jiangxi Agricultural University.

2.3 Parasite isolation, inoculation, and RNA extraction

Three hundred honey bees of each *A. mellifera* and *A. cerana* were captured near the hive entrance using an insect net. The midgut was dissected and homogenized to isolate *N. ceranae* spores that were further purified using the Percoll gradient (Chen et al., 2013). The spores were counted under the light microscope using a hemacytometer. The sealed brood frames from three hives of H_{Ame1} and H_{Acer} were kept in an incubator to collect newly emerged bees (35°C, 75% humidity).

The newly emerged honey bee workers (H_{Acer} and H_{Ame1}) were individually inoculated with 2 μ L of sugar solution with 10^5 spores. Additional freshly emerged honey bees (< 24 h after emerging) were each fed 2 μ L of sugar solution without spores as the uninfected control group. One hundred fifty honey bees were inoculated in each treatment group, and the cohorts were divided into 3 rearing cups (50 bees per cup) in an incubator (35°C, 75% humidity) (3 replicates, Supplementary Table S1) to investigate the general bee response and parasite proliferation. During the experiment, sucrose (50% w/w) was provided *ad libitum* as the only food. In each rearing cup, three bees were collected at 24 h intervals from 1 to 5 dpi (day post-inoculation) for RNA-seq. The remaining bees were dissected to count spores at 14 dpi.

2.4 RNA extraction and library preparation

As the parasite infects the epithelial cell in the midgut, we dissected midgut tissue for RNA-seq. Three bees per cup per day were dissected and pooled for RNA extraction using Trizol. The library was prepared using the NEBNext Ultra RNA Kit. In total, 90 RNA libraries (5 days * 6 treatments * 3 replicates) were sequenced on the Illumina NovaSeq 6000 platform.

2.5 Bioinformatics and statistics

The quality of RNA reads (150bp, paired-end) was first viewed using Fastqc (Andrews, 2010) and trimmed using the Seqtk package with default parameters (Li, 2022). The processed reads were aligned to *N. ceranae* (Version Ncer 3.0), *A. cerana* (version CC1.0), and *A. mellifera* (version Hav3.1) genome, respectively, with the Hisat2 package with default parameters (Kim et al., 2015; Diao et al., 2018; Wallberg et al., 2019; Huang et al., 2021). The read count per gene was retrieved using bedtools (Quinlan and Hall, 2010). The within-group dispersion was calculated from the three replicates to determine the significantly regulated genes with edgeR package and adjusted for FDR (false discovery rate) (Robinson et al., 2010). The genes with FDR < 0.05 were defined as significantly regulated ones. Gene Ontology (GO) terms were retrieved using EggNOG-mapper, and the enrichment analysis was performed using the TopGo package with an adjusted weighted ks test (Robinson et al., 2010; Alexa and

Rahnenfuhrer, 2021). Bee survival was analyzed using the Kaplan-Meier estimate in the survival package, adjusted for FDR (R Core Team, 2013; Therneau, 2022). The variance of the spore load among the treatment groups was analyzed with the Wilcoxon rank test, and the p values were adjusted with FDR to reduce false positives. The impact of the spore source and day on the gene expression was analyzed using ANOVA, where the day and parasite source were fixed factors, and the replicates were random factors. The number of up and down-regulated genes was analyzed using Pearson's Chi-squared test.

3 Results

3.1 The parasites show distinct virulence in honey bees

The uninfected H_{Amel} shows the highest survival (99.4% survival), followed by H_{Amel} infected with P_{Acer} ($H_{Amel_P_{Acer}}$, 98.5% survival) and the $H_{Amel_P_{Amel}}$ group (96.9% survival). The bees in the $H_{Acer_P_{Acer}}$ group show the lowest survival (86.6% survival). The parasite source (P_{Amel} and P_{Acer}) shows a minor impact on the survival of H_{Amel} ($H_{Amel_P_{Acer}}$ vs $H_{Amel_P_{Amel}}$, Kaplan-Meier test, $P > 0.05$) (Figure 1A, Supplementary Table S2). Comparatively, the parasite P_{Acer} causes significantly higher mortality in H_{Acer} than P_{Amel} (Coxph test, $P < 0.001$). The uninfected H_{Amel} survives substantially better than the uninfected H_{Acer} (Coxph test, $P < 0.01$). Overall, the parasites cause a higher mortality in H_{Acer} than

in H_{Amel} . Additionally, we normalize the mortality variance between the two honey bee species using uninfected_ H_{Amel} and uninfected_ H_{Acer} . Again, the parasites cause higher mortality in H_{Acer} than H_{Amel} ($P < 0.001$, Supplementary Figure S1).

3.2 The parasites show substantial proliferation variance

The spores are not found in the uninfected bees. The spore load is not evenly distributed among the four infected honey bee groups (Kruskal-Wallis test, $\chi^2 = 43.1$, $df=3$, $P < 0.0001$, Figure 1B). The parasite produces more spores in H_{Amel} than H_{Acer} , when infected by either P_{Amel} or P_{Acer} (Wilcoxon rank sum test, $df=1$, $P < 0.001$) (Supplementary Table S3). Thus, host species substantially impact the parasite proliferation ($F=32.3$, $df=2$, ANOVA, $P < 0.0001$).

3.3 Higher parasite gene expression profile in H_{Amel} than H_{Acer}

To investigate the parasite gene expression profile, we quantify the parasite transcriptome in the two host species (Figure 1C). H_{Acer} shows a stronger tendency to suppress the parasite gene expression than H_{Amel} ($F=77.1$, $df=1$, ANOVA, $P < 0.0001$). A significantly lower number of up-regulated genes are observed in P_{Amel} than P_{Acer} when infecting the H_{Amel} (Pearson's Chi-squared test, $\chi^2 =$

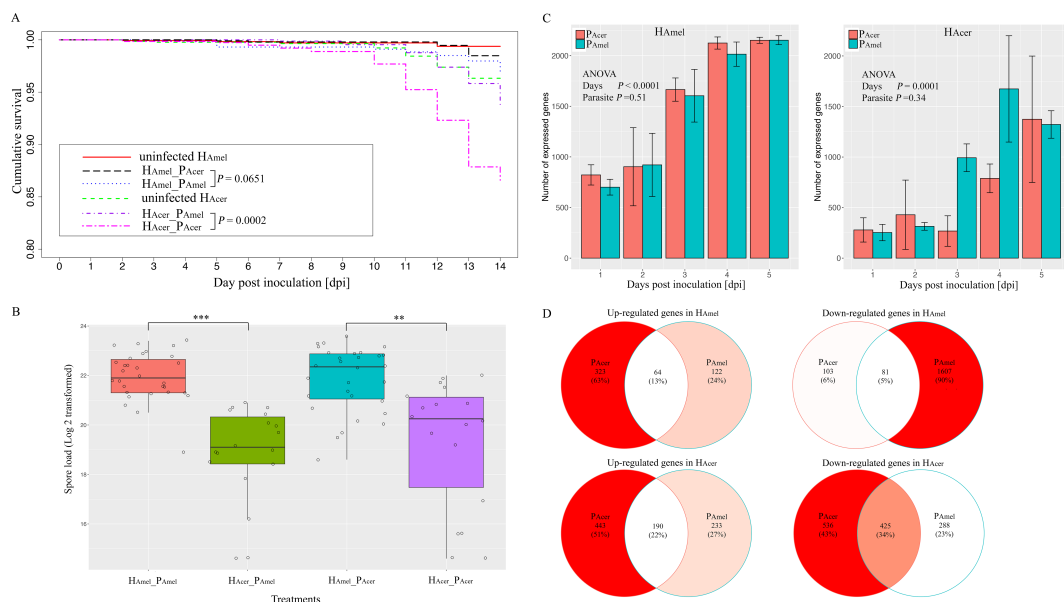


FIGURE 1

Transmission and virulence of the parasites and the bee responses towards the parasite in a two-parasite and two-host system. (A) Cumulative survival of the honey bees. The impact of the parasite source on the survival of bees was minor. The P_{Acer} caused substantially higher mortality than P_{Amel} in H_{Acer} . (B) parasite proliferation variance in two honey bee species. The parasite produced more spores in H_{Amel} than H_{Acer} . Additionally, the impacts of the parasite sources on the spore load were minor in either host. (C) The number of expressed parasite genes in two hosts. Fewer parasite genes were expressed in *A. cerana* than *A. mellifera*, irrespective of the parasite sources. (D) Venn diagram of the shared and unique regulated host genes responding to the two parasite isolates. Overall, the bee genes were down-regulated by the infection, and a subset of genes responded to both parasite sources. ** indicates the significance level at $P < 0.01$; *** indicates the significance level at $P < 0.001$. The error bar indicates the standard deviation.

20.8, $df=2$, $P < 0.0001$). The highest variance was at four dpi, and the number of up-regulated genes is threefold higher in P_{Acer} (36 genes) than in P_{Amel} (12 genes) in H_{Amel} (Supplementary Table S4). Thus, the parasites express a higher number of genes and transcript levels in H_{Amel} than in H_{Acer} .

3.4 Host response variance toward the infection

To infer how strong is the impact of the infection on the host, the honey bee transcriptomes responding to each of the two parasite sources are quantified as well. We find the expression of bee (H_{Amel} and H_{Acer}) genes is suppressed, where more down-regulated genes than up-regulated ones when infected by either P_{Amel} or P_{Acer} (Table 1, Pearson's Chi-squared test, $\chi^2 = 51.0$, $df=4$, $P < 0.001$). Comparatively, more genes were regulated by the infection in H_{Acer} than H_{Amel} . The bee hosts share a common subset of genes that respond to infection (Figure 1D). The immune response toward the infection is small in H_{Amel} , reflected by only two down-regulated immune genes in Toll pathway involved in pathogen recognition (LOC412536) and melanization (LOC406115). We found both up and down regulated immune genes in H_{Acer} . Particularly, the Toll pathway is generally suppressed, including the genes involved in parasite recognition PGRP (APICC_00292), signal transport SPZ (APICC_01852), and antimicrobial peptides defensin and lysozyme (APICC_08301, APICC_03572, APICC_08272). These suppressed genes have previously been confirmed using qPCR (Ke et al., 2022). A few genes are continuously down-regulated in H_{Amel} , reflecting genes inhibited by the infection (Supplementary Figure S2). GO enrichment analysis indicates that apoptosis regulation (GO:0043066, FDR < 0.0001), cell cycle phase transition (GO:0044843, FDR < 0.0001), and a few other biological functions are altered in the infected honey bee genes (Figure 2).

4 Discussion

A static environment favors decreased genetic diversity. In contrast, a fluctuating environment favors a high genetic diversity (Abdul-Rahman et al., 2021). The two bee species in Asia compete for the habitat, and the parasite can shift between them. To adapt to both bees, the parasite may favor a large gene pool to survive. Indeed, a

higher diversity in the sympatric population than in the allopatric population was observed (Ke et al., 2022). Parasites show elevated genetic diversity by infecting diverse host populations, suggesting host diversity shapes parasite diversity (Ekroth et al., 2021).

Previous studies suggest that *N. ceranae* causes 40% ~ 90% of bee mortality, and the spore load is at 10^6 levels in H_{Amel} two weeks post-inoculation (Higes et al., 2007; Paxton et al., 2007; Martín-Hernández et al., 2011; Suwannapong et al., 2011; Eiri et al., 2015). In our data, low mortality (4.1%) is observed in H_{Amel} , and slightly higher mortality (13.4%) is observed in H_{Acer} . The parasite shows low virulence in the primary host when the alternative host species are less common (Manzoli et al., 2018). Historically, the parasite is first described in *A. cerana* and does not necessarily indicate that *A. cerana* is the primary host (Fries et al., 1996). Subsequently, the parasite is identified in *A. mellifera* (Higes et al., 2007). The anthropogenic-driven contact enhanced the gene flow of the parasites (Pelín et al., 2015). If *A. cerana* is the primary host, a balanced transmission and virulence are expected between H_{Acer} and P_{Acer} . In our data, the parasite shows high virulence and low spore load in H_{Acer} , which do not follow the conventional host-parasite evolution. Thus, additional studies are needed to investigate whether H_{Amel} or H_{Acer} is the primary host of *N. ceranae*.

N. ceranae infection causes global gene expression changes in H_{Amel} and H_{Acer} (Holt et al., 2013; Fan et al., 2022). A few studies suggest the Toll pathway is the primary immune response to the *N. ceranae* infection (Huang and Evans, 2016; Li et al., 2017; Ke et al., 2022). In our data, we find the infection caused minor immune stress in H_{Amel} . Comparatively, the infection suppresses the Toll pathway from pathway recognition to the antimicrobial peptides in H_{Acer} . Additionally, the infection strongly regulates the transcripts, and more genes are altered by the infection, suggesting intense stress in H_{Acer} . Remarkably, the infection causes higher mortality in Asia honey bees, which has been overlooked for decades. Lipid metabolism is important for microsporidians to establish infection (El Alaoui et al., 2001; Jeon, 2021). In our data, the up-regulated parasite genes are enriched in lipid metabolism, which might be necessary for *N. ceranae* to establish infection. The apoptosis pathway is also enriched in regulated honey bee genes, confirming apoptosis is an essential defense mechanism in bees against *N. ceranae* infection (Higes et al., 2013; Kurze et al., 2015). In bumblebees, the microsporidian parasite *Nosema bombi* shows distinctive virulence toward hosts in a sympatric population (Rutrecht and Brown, 2009). In *Daphnia*, the microsporidian

TABLE 1 The number of significantly regulated honey bee genes between infected and uninfected bees.

	H_{Amel}										P	H_{Acer}										P		
	1 dpi		2 dpi		3 dpi		4 dpi		5 dpi			P	1 dpi		2 dpi		3 dpi		4 dpi		5 dpi		P	
	U	D	U	D	U	D	U	D	U	D			U	D	U	D	U	D	U	D	U			D
P_{Acer}	38	60	32	117	30	101	24	130	88	93	< 0.001	143	239	213	394	85	115	325	353	70	196	< 0.001		
P_{Amel}	28	121	32	219	23	213	27	265	105	1320	< 0.001	164	189	84	149	67	173	136	156	87	248	< 0.001		

To quantify the impact of the parasite sources on the host species, the gene expression of the infected host was compared with the uninfected ones. The number of down-regulated honey bee genes was substantially larger than the up-regulated ones. U indicates the number of up-regulated genes; D indicates the number of down-regulated genes.

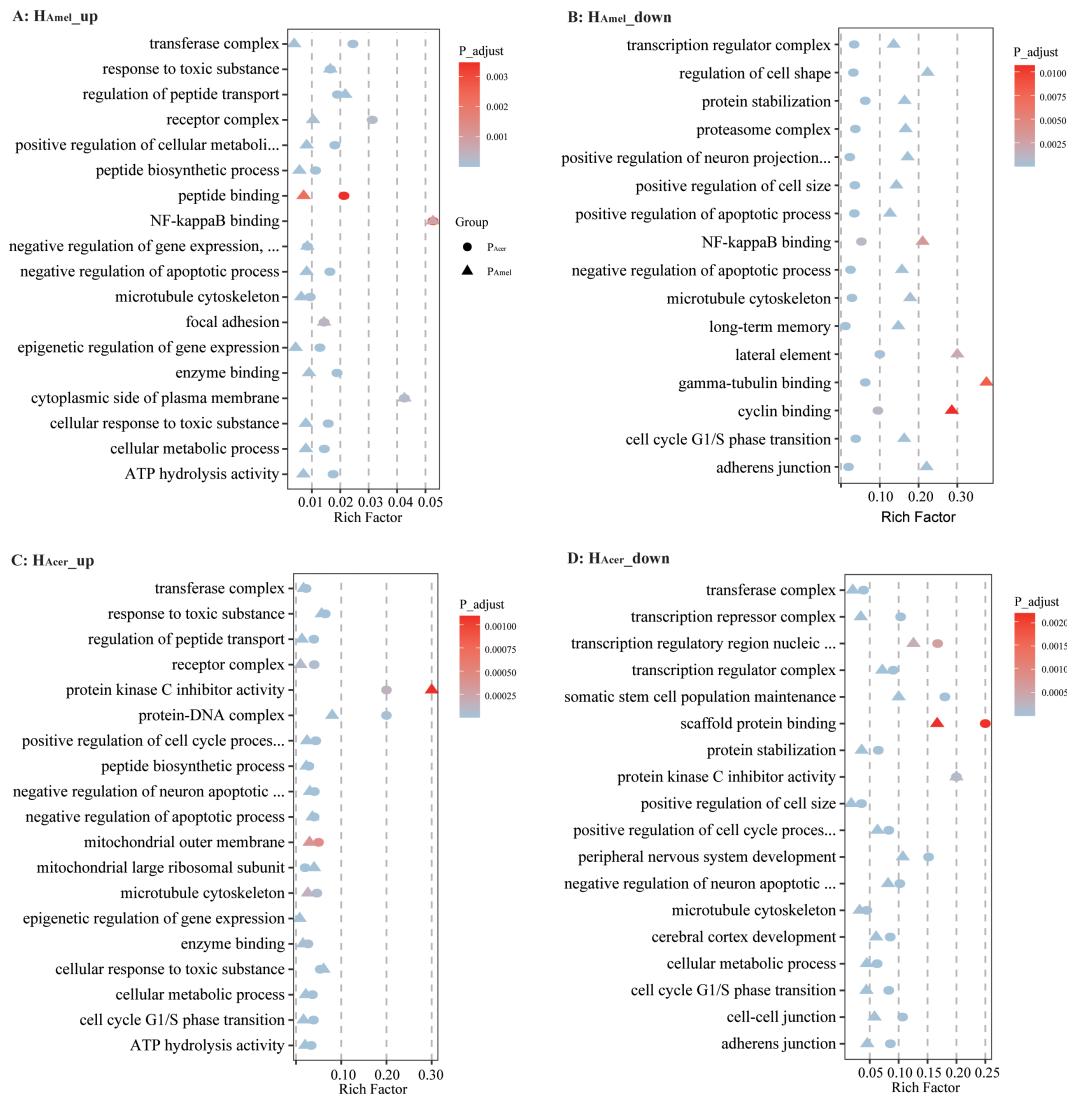


FIGURE 2 Bubble chart for GO enrichment of differentially expressed genes. The intersection of up-regulated genes at five time points in H_{AmeI} infected with P_{AmeI} and P_{Acer} (A). The intersection of down-regulated genes at five time points in H_{AmeI} (B). Up-regulated genes at five time points in H_{Acer} (C) and down-regulated genes at five time points in H_{Acer} (D). Upon parasitic infection, the honey bee enzyme binding and metabolism-related genes were up-regulated, while genes related to the cell cycle and transcriptional regulation were suppressed.

shows reduced infection intensity with increased geographic distance (Ebert, 1994). In our case, bee genetics and co-evolutionary status may shape the distinct trade-offs between virulence and proliferation in *N. ceranae*. Future studies to identify the genome diversification of *N. ceranae* may help to determine its primary host. Additional gene functional studies help to understand the host-parasite co-evolution in this multi-host system, also as target genes for this parasite control.

5 Conclusions

The microsporidian parasite *N. ceranae* evolves a balanced virulence and transmission with the honey bee *A. mellifera* in

Asia. Comparatively, the parasite shows high virulence and low transmission in the honey bee *A. ceranae*, supported by the time series transcripts. Thus, additional study is needed to investigate whether *A. ceranae* or *A. mellifera* is the primary host of this microsporidian parasite.

Data availability statement

The datasets presented in this study can be found in online repositories. The names of the repository/repositories and accession number(s) can be found in the article/Supplementary Material. The sequencing reads are available in NCBI Bio-project PRJNA822678 and PRJNA784016.

Author contributions

XW: Writing – original draft. QH: Funding acquisition, Writing – original draft, Writing – review & editing.

Funding

The author(s) declare that financial support was received for the research, authorship, and/or publication of this article. This work is supported by the National Natural Science Foundation of China #32260862.

Conflict of interest

The authors declare the research was conducted in the absence of any commercial or financial relationships that could be construed as a potential conflict of interest.

References

- Abdul-Rahman, F., TranChina, D., and Gresham, D. (2021). Fluctuating environments maintain genetic diversity through neutral fitness effects and balancing selection. *Mol. Biol. Evol.* 38, 4362–4375. doi: 10.1093/molbev/msab173
- Acevedo, M. A., Dilleuth, F. P., Flick, A. J., Faldyn, M. J., and Elder, B. D. (2019). Virulence-driven trade-offs in disease transmission: A meta-analysis. *Evolution* 73, 636–647. doi: 10.1111/evo.2019.73.issue-4
- Alexa, A., and Rahnenfuhrer, J. (2021). *TopGO: Enrichment Analysis for Gene Ontology. R Packag. version 2.46.0*. Available online at: <https://rdrr.io/bioc/topGO/> (Accessed November 2024).
- Andrews, S. (2010). FastQC: A quality control tool for high throughput sequence data. Available online at: <http://www.bioinformatics.babraham.ac.uk/projects/fastqc/> (Accessed November 2024).
- Botias, C., Martín-Hernández, R., Barrios, L., Meana, A., and Higes, M. (2013). *Nosema* spp. infection and its negative effects on honey bees (*Apis mellifera iberiensis*) at the colony level. *Vet. Res.* 44, 25. doi: 10.1186/1297-9716-44-25
- Chen, Y. p., Pettis, J. S., Zhao, Y., Liu, X., Tallon, L. J., Sadzewicz, L. D., et al. (2013). Genome sequencing and comparative genomics of honey bee microsporidia, *Nosema apis* reveal novel insights into host-parasite interactions. *BMC Genomics* 14, 451. doi: 10.1186/1471-2164-14-451
- de Rooze, J. C., Yates, A. J., and Altizer, S. (2008). Virulence-transmission trade-offs and population divergence in virulence in a naturally occurring butterfly parasite. *Proc. Natl. Acad. Sci.* 105, 7489–7494. doi: 10.1073/pnas.0710909105
- Diao, Q., Sun, L., Zheng, H., Zeng, Z., Wang, S., Xu, S., et al. (2018). Genomic and transcriptomic analysis of the Asian honeybee *Apis cerana* provides novel insights into honeybee biology. *Sci. Rep.* 8, 822. doi: 10.1038/s41598-017-17338-6
- Ebert, D. (1994). Virulence and local adaptation of a horizontally transmitted parasite. *Science* 265, 1084–1086. doi: 10.1126/science.265.5175.1084
- Eiri, D. M., Suwannapong, G., Endler, M., and Nieh, J. C. (2015). *Nosema ceranae* can infect honey bee larvae and reduces subsequent adult longevity. *PLoS One* 10, e0126330. doi: 10.1371/journal.pone.0126330
- Etkroth, A. K. E., Gerth, M., Stevens, E. J., Ford, S. A., and King, K. C. (2021). Host genotype and genetic diversity shape the evolution of a novel bacterial infection. *ISME J.* 15, 2146–2157. doi: 10.1038/s41396-021-00911-3
- El Alaoui, H., Bata, J., Bauchart, D., Doré, J. C., and Vivarès, C. P. (2001). Lipids of three microsporidian species and multivariate analysis of the host-parasite relationship. *J. Parasitol.* 87, 554–559. doi: 10.2307/3285092
- Engelstädter, J., and Fortuna, N. Z. (2019). The dynamics of preferential host switching: Host phylogeny as a key predictor of parasite distribution. *Evolution* 73, 1330–1340. doi: 10.1111/evo.2019.73.issue-7
- Fan, Y., Wang, J., Yu, K., Zhang, W., Cai, Z., Sun, M., et al. (2022). Comparative transcriptome investigation of *Nosema ceranae* infecting Eastern honey bee workers. *Insects* 13, 241. doi: 10.3390/insects13030241

Generative AI statement

The author(s) declare that no Generative AI was used in the creation of this manuscript.

Publisher's note

All claims expressed in this article are solely those of the authors and do not necessarily represent those of their affiliated organizations, or those of the publisher, the editors and the reviewers. Any product that may be evaluated in this article, or claim that may be made by its manufacturer, is not guaranteed or endorsed by the publisher.

Supplementary material

The Supplementary Material for this article can be found online at: <https://www.frontiersin.org/articles/10.3389/fcimb.2025.1524197/full#supplementary-material>

- Fan, X., Zhang, W., Zhang, K., Zhang, J., Long, Q., Wu, Y., et al. (2022). In-depth investigation of microRNA-mediated cross-kingdom regulation between Asian honey bee and microsporidian. *Front. Microbiol.* 13, 1003294. doi: 10.3389/fmicb.2022.1003294

- Fries, I., Feng, F., da Silva, A., Slemenda, S. B., and Pieniazek, N. J. (1996). *Nosema ceranae* n. sp. (Microspora, Nosematidae), morphological and molecular characterization of a microsporidian parasite of the Asian honey bee *Apis cerana* (Hymenoptera, Apidae). *Eur. J. Protistol.* 32, 356–365. doi: 10.1016/S0932-4739(96)80059-9

- Gage, S. L., Kramer, C., Calle, S., Carroll, M., Heien, M., and DeGrandi-Hoffman, G. (2018). *Nosema ceranae* parasitism impacts olfactory learning and memory and neurochemistry in honey bees (*Apis mellifera*). *J. Exp. Biol.* 221, jeb161489. doi: 10.1242/jeb.161489

- Gisder, S., Mockel, N., Linde, A., and Genersch, E. (2011). A cell culture model for *Nosema ceranae* and *Nosema apis* allows new insights into the life cycle of these important honey bee-pathogenic microsporidia. *Environ. Microbiol.* 13, 404–413. doi: 10.1111/j.1462-2920.2010.02346.x

- Gowler, C. D., Essington, H., O'Brien, B., Shaw, C. L., Bilich, R. W., Clay, P. A., et al. (2023). Virulence evolution during a naturally occurring parasite outbreak. *Evol. Ecol.* 37, 113–129. doi: 10.1007/s10682-022-10169-6

- Graystock, P., Goulson, D., and Hughes, W. O. H. (2015). Parasites in bloom: flowers aid dispersal and transmission of pollinator parasites within and between bee species. *Proc. Biol. Sci.* 282, 20151371. doi: 10.1098/rspb.2015.1371

- Higes, M., Garcia-Palencia, P., Martín-Hernández, R., and Meana, A. (2007). Experimental infection of *Apis mellifera* honeybees with *Nosema ceranae* (Microsporidia). *J. Invertebr. Pathol.* 94, 211–217. doi: 10.1016/j.jip.2006.11.001

- Higes, M., Juarraz, A., Dias-Almeida, J., Lucena, S., Botias, C., Meana, A., et al. (2013). Apoptosis in the pathogenesis of *Nosema ceranae* (Microsporidia: Nosematidae) in honey bees (*Apis mellifera*). *Environ. Microbiol. Rep.* 5, 530–536. doi: 10.1111/emir.2013.5.issue-4

- Higes, M., Martín-Hernández, R., Botias, C., Bailón, E. G., González-Porto, A. V., Barrios, L., et al. (2008). How natural infection by *Nosema ceranae* causes honeybee colony collapse. *Environ. Microbiol.* 10, 2659–2669. doi: 10.1111/j.1462-2920.2008.01687.x

- Holt, H. L., Aronstein, K. A., and Grozinger, C. M. (2013). Chronic parasitization by *Nosema microsporidia* causes global expression changes in core nutritional, metabolic and behavioral pathways in honey bee workers (*Apis mellifera*). *BMC Genomics* 14, 799. doi: 10.1186/1471-2164-14-799

- Huang, Q., and Evans, J. D. (2016). Identification of microRNA-like small RNAs from fungal parasite *Nosema ceranae*. *J. Invertebr. Pathol.* 133, 107–109. doi: 10.1016/j.jip.2015.12.005

- Huang, Q., Wu, Z. H., Li, W. F., Guo, R., Xu, J. S., Dang, X. Q., et al. (2021). Genome and evolutionary analysis of *Nosema ceranae*: A microsporidian parasite of honey bees. *Front. Microbiol.* 12, 645353. doi: 10.3389/fmicb.2021.645353

- Jack, C. J., Lucas, H. M., Webster, T. C., and Sagili, R. R. (2016). Colony level prevalence and intensity of *Nosema ceranae* in honey bees (*Apis mellifera* L.). *PLoS One* 11, e0163522. doi: 10.1371/journal.pone.0163522
- Jeon, J. (2021). *Characterizing the Role of Host Lipid Metabolism on Microsporidia Infection in Caenorhabditis elegans*. (master's thesis). University of Toronto. Available at: <https://tspace.library.utoronto.ca/handle/1807/105004> (Accessed November 2024).
- Ke, L., Yan, W. Y., Zhang, L. Z., Zeng, Z. J., Evans, J. D., and Huang, Q. (2022). Honey bee habitat sharing enhances gene flow of the parasite *Nosema ceranae*. *Microb. Ecol.* 83, 1105–1111. doi: 10.1007/s00248-021-01827-3
- Kim, D., Langmead, B., and Salzberg, S. L. (2015). HISAT: a fast spliced aligner with low memory requirements. *Nat. Methods* 12, 357. doi: 10.1038/nmeth.3317
- Kurze, C., Le Conte, Y., Dussaubat, C., Erler, S., Kryger, P., Lewkowski, O., et al. (2015). *Nosema* tolerant honeybees (*Apis mellifera*) escape parasitic manipulation of apoptosis. *PLoS One* 10, e0140174. doi: 10.1371/journal.pone.0140174
- Li, H. (2022). seqtk: a fast and lightweight tool for processing sequences in the FASTA or FASTQ format. Available online at: <https://github.com/lh3/seqtk> (Accessed November 2024).
- Li, W., Evans, J., Li, J., Su, S., Hamilton, M., and Chen, Y. (2017). Spore load and immune response of honey bees naturally infected by *Nosema ceranae*. *Parasitol. Res.* 116, 1–10. doi: 10.1007/s00436-017-5630-8
- Li, J., Qin, H., Wu, J., Sadd, B. M., Wang, X., Evans, J. D., et al. (2012). The prevalence of parasites and pathogens in Asian honeybees *Apis cerana* in China. *PLoS One* 7, e47955. doi: 10.1371/journal.pone.0047955
- Manzoli, D. E., Saravia-Pietro Paolo, M. J., Antoniazzi, L. R., Barenco, E., Arce, S. I., Quiroga, M. A., et al. (2018). Contrasting consequences of different defence strategies in a natural multihost–parasite system. *Int. J. Parasitol.* 48, 445–455. doi: 10.1016/j.ijpara.2017.11.001
- Martin-Hernández, R., Botías, C., Barrios, L., Martínez-Salvador, A., Meana, A., Mayack, C., et al. (2011). Comparison of the energetic stress associated with experimental *Nosema ceranae* and *Nosema apis* infection of honeybees (*Apis mellifera*). *Parasitol. Res.* 109, 605–612. doi: 10.1007/s00436-011-2292-9
- Paris, L., El Alaoui, H., Delbac, F., and Diogon, M. (2018). Effects of the gut parasite *Nosema ceranae* on honey bee physiology and behavior. *Curr. Opin. Insect Sci.* 26, 149–154. doi: 10.1016/j.cois.2018.02.017
- Paxton, R. J., Klee, J., Korpela, S., and Fries, I. (2007). *Nosema ceranae* has infected *Apis mellifera* in Europe since at least 1998 and may be more virulent than *Nosema apis*. *Apidologie* 38, 558–565. doi: 10.1051/apido:2007037
- Pelin, A., Selman, M., Aris-Brosou, S., Farinelli, L., and Corradi, N. (2015). Genome analyses suggest the presence of polyploidy and recent human-driven expansions in eight global populations of the honeybee pathogen *Nosema ceranae*. *Environ. Microbiol.* 17, 4443–4458. doi: 10.1111/emi.2015.17.issue-11
- Quinlan, A. R., and Hall, I. M. (2010). BEDTools: a flexible suite of utilities for comparing genomic features. *Bioinformatics* 26, 841–842. doi: 10.1093/bioinformatics/btq033
- R Core Team (2013). *R: A language and environment for statistical computing* (Vienna, Austria: R Found. Stat. Comput). Available at: <http://www.R-project.org/> (Accessed November 2024).
- Robinson, M. D., McCarthy, D. J., and Smyth, G. K. (2010). edgeR: a Bioconductor package for differential expression analysis of digital gene expression data. *Bioinformatics* 26, 139–140. doi: 10.1093/bioinformatics/btp616
- Rutrecht, S. T., and Brown, M. J. F. (2009). Differential virulence in a multiple-host parasite of bumble bees: resolving the paradox of parasite survival? *Oikos* 118, 941–949. doi: 10.1111/j.1600-0706.2009.17392.x
- Suwannapong, G., Yemor, T., Boonpakdee, C., and Benbow, M. E. (2011). *Nosema ceranae*, a new parasite in Thai honeybees. *J. Invertebr. Pathol.* 106, 236–241. doi: 10.1016/j.jip.2010.10.003
- Therneau, T. (2022). *A package for survival analysis in R. R Packag. version 3.4-0*. Available online at: <https://CRAN.R-project.org/package=survival> (Accessed November 2024).
- Wallberg, A., Bunikis, I., Pettersson, O. V., Mosbech, M.-B., Childers, A. K., Evans, J. D., et al. (2019). A hybrid *de novo* genome assembly of the honeybee, *Apis mellifera*, with chromosome-length scaffolds. *BMC Genomics* 20, 275. doi: 10.1186/s12864-019-5642-0
- Yang, B., Peng, G., Li, T., and Kadowaki, T. (2013). Molecular and phylogenetic characterization of honey bee viruses, *Nosema* microsporidia, protozoan parasites, and parasitic mites in China. *Ecol. Evol.* 3, 298–311. doi: 10.1002/ece3.2013.3.issue-2