



OPEN ACCESS

EDITED BY

Aftab Nadeem,
Umeå University, Sweden

REVIEWED BY

Julia Romano,
Johns Hopkins University, United States
Yunuen Avalos-Padilla,
Institute for Bioengineering of Catalonia
(IBEC), Spain

*CORRESPONDENCE

Fabio Tosini
✉ fabio.tosini@iss.it

[†]These authors have contributed
equally to this work and share
first authorship

RECEIVED 08 January 2024

ACCEPTED 18 March 2024

PUBLISHED 10 April 2024

CITATION

Bertuccini L, Boussadia Z, Salzano AM,
Vanni I, Passerò I, Nocita E, Scaloni A,
Sanchez M, Sargiacomo M, Fiani ML and
Tosini F (2024) Unveiling *Cryptosporidium*
parvum sporozoite-derived extracellular
vesicles: profiling, origin, and
protein composition.
Front. Cell. Infect. Microbiol. 14:1367359.
doi: 10.3389/fcimb.2024.1367359

COPYRIGHT

© 2024 Bertuccini, Boussadia, Salzano, Vanni,
Passerò, Nocita, Scaloni, Sanchez, Sargiacomo,
Fiani and Tosini. This is an open-access article
distributed under the terms of the [Creative Commons Attribution License \(CC BY\)](https://creativecommons.org/licenses/by/4.0/). The
use, distribution or reproduction in other
forums is permitted, provided the original
author(s) and the copyright owner(s) are
credited and that the original publication in
this journal is cited, in accordance with
accepted academic practice. No use,
distribution or reproduction is permitted
which does not comply with these terms.

Unveiling *Cryptosporidium parvum* sporozoite-derived extracellular vesicles: profiling, origin, and protein composition

Lucia Bertuccini^{1†}, Zaira Boussadia^{2†}, Anna Maria Salzano^{3†},
Ilaria Vanni^{4†}, Ilaria Passerò⁵, Emanuela Nocita⁵,
Andrea Scaloni³, Massimo Sanchez¹, Massimo Sargiacomo⁶,
Maria Luisa Fiani⁶ and Fabio Tosini^{5*}

¹Core Facilities, Istituto Superiore di Sanità, Rome, Italy, ²National Center for Drug Research and Evaluation, Istituto Superiore di Sanità, Rome, Italy, ³Proteomics, Metabolomics and Mass Spectrometry laboratory, ISPAAM, Consiglio Nazionale delle Ricerche, Portici, Italy, ⁴Department of Food Safety, Nutrition and Veterinary Public Health, SANV, Istituto Superiore di Sanità, Rome, Italy, ⁵Department of Infectious Diseases, Istituto Superiore di Sanità, Rome, Italy, ⁶National Center for Global Health, Istituto Superiore di Sanità, Rome, Italy

Cryptosporidium parvum is a common cause of a zoonotic disease and a main cause of diarrhea in newborns. Effective drugs or vaccines are still lacking. Oocyst is the infective form of the parasite; after its ingestion, the oocyst excysts and releases four sporozoites into the host intestine that rapidly attack the enterocytes. The membrane protein CpRom1 is a large rhomboid protease that is expressed by sporozoites and recognized as antigen by the host immune system. In this study, we observed the release of CpRom1 with extracellular vesicles (EVs) that was not previously described. To investigate this phenomenon, we isolated and resolved EVs from the excystation medium by differential ultracentrifugation. Fluorescence flow cytometry and transmission electron microscopy (TEM) experiments identified two types of sporozoite-derived vesicles: large extracellular vesicles (LEVs) and small extracellular vesicles (SEVs). Nanoparticle tracking analysis (NTA) revealed mode diameter of 181 nm for LEVs and 105 nm for SEVs, respectively. Immunodetection experiments proved the presence of CpRom1 and the Golgi protein CpGRASP in LEVs, while immune-electron microscopy trials demonstrated the localization of CpRom1 on the LEVs surface. TEM and scanning electron microscopy (SEM) showed that LEVs were generated by means of the budding of the outer membrane of sporozoites; conversely, the origin of SEVs remained uncertain. Distinct protein compositions were observed between LEVs and SEVs as evidenced by their corresponding electrophoretic profiles. Indeed, a dedicated proteomic analysis identified 5 and 16 proteins unique for LEVs and SEVs, respectively. Overall, 60 proteins were identified in the proteome of both types of vesicles and most of these proteins (48 in number) were already identified in

the molecular cargo of extracellular vesicles from other organisms. Noteworthy, we identified 12 proteins unique to *Cryptosporidium* spp. and this last group included the immunodominant parasite antigen glycoprotein GP60, which is one of the most abundant proteins in both LEVs and SEVs.

KEYWORDS

Cryptosporidium, sporozoite, excystation, rhomboid, extracellular vesicles, exosome, aspartyl protease, GP60

1 Introduction

Cryptosporidium genus consists of 38 species of obligate parasites of the phylum Apicomplexa that infect vertebrates of many species (Feng et al., 2018). Several species of *Cryptosporidium* are important pathogens affecting mammals' intestine and cause cryptosporidiosis, a diarrhoeal disease that usually lasts several days. Two closely related species, namely *Cryptosporidium parvum* and *Cryptosporidium hominis*, are responsible for most cases of human cryptosporidiosis with watery diarrhoea as the main symptom (Bouzig et al., 2013). In immunocompetent adults, cryptosporidiosis usually has a limited duration (7–10 days), but differently, this infection poses a serious risk to people with immunodeficiency, who may have a long-term and life-threatening illness due to severe dehydration (Checkley et al., 2015). Remarkably, *C. parvum* and *C. hominis* are also responsible for most cases of neonatal cryptosporidiosis, a major cause of diarrhoea in children in endemic regions, where transmission is favoured by poor hygiene conditions (Kotloff et al., 2013). Transmission of the parasite occurs via the oral-fecal route either directly (animal to human or human to human) or indirectly through contaminated food and, above all, water (Xiao and Feng, 2017).

Oocyst is the parasitic stage released with feces by infected subjects, and it is responsible for the transmission of the infection to other subjects. Oocysts are characterized by a thick “shell”, the oocyst wall, constituted by polysaccharides, lipids and peculiar proteins defined as *Cryptosporidium* oocyst wall proteins (COWPs), which make oocysts particularly resistant to environmental and chemical stresses (Templeton et al., 2004). Noteworthy, oocysts are also resistant to treatments to disinfect drinkable water; this is a significant risk factor for water plant contamination, which can cause large outbreaks with thousands of infected people (MacKenzie et al., 1994). Despite the relevance of *Cryptosporidium* for human health, effective drug therapies are still lacking, and vaccines have not yet been developed.

Contrarily to other apicomplexan parasites such as *Plasmodium* spp. and *Toxoplasma gondii*, *Cryptosporidium* completes its life cycle in a single host (monoxenous). Excystation is the first stage of the infectious process and consists of rupture of the oocyst wall and the egress of four sporozoites; this is triggered first by the passage of the oocyst in the stomach, then by its subsequent contact with the bile salts in the small intestine (Fayer and Xiao, 2007). Then, released

sporozoites adhere to the luminal side of enterocytes in the small intestine. The close contact between the parasite and the host cell membrane induces the formation of a parasitophorous vacuole (PV). PV protrudes toward the intestinal lumen, but the intracellular stages of the parasite are completely wrapped by the host cell membrane. The motile stages of *Cryptosporidium* (i.e., sporozoites and merozoites), like other apicomplexans, are characterized by the apical complex at the anterior end of the cell. The apical complex includes specialized subcellular organelles, such as rhoptry, numerous micronemes and various dense granules, which are vesicular structures specialized for the parasitic function. These organelles discharge their content sequentially from the egress of sporozoites during the attachment and invasion of the host cell, and until the formation of a parasitophorous vacuole at the luminal side of the cell (Guérin et al., 2023).

Oocyst excystation as well as the organelle discharge can be easily replicated *in vitro* even in the absence of host cells. In fact, free sporozoites maintained at 37°C in an adequate medium, release most of their organelle content within two hours (Chen et al., 2004). Free sporozoites, among other things, carry antigens that can be successfully counterbalanced by circulating host antibodies (Tosini et al., 2019). By investigating the antigenic proteins involved in the preliminary phases of the excystation, we identified a rhomboid protease, namely CpRom1, occurring in sporozoites (Trasarti et al., 2007). Rhomboids are ubiquitous serine-proteases that are entirely embedded in the lipid bilayer of cell membranes (Kühnle et al., 2019). Rhomboids in Apicomplexa play a unique role before and during the invasion of the host cell by cleaving adhesins, surface proteins exposed in the motile stages such as sporozoites, during their path towards the host cell and in the phase of penetration through the host cell membrane (Carruthers and Blackman, 2005; Dowse and Soldati, 2005; Dowse et al., 2008).

In this study, we observed that CpRom1 is released by sporozoites as bound to extracellular vesicles (EVs). This coincidence led us to investigate the release of microvesicles by sporozoites. Nowadays, EVs are recognized as fundamental elements for intercellular communication both in unicellular and in multicellular organisms (Doyle and Wang, 2019). They also serve as effectors of intercellular communication in protozoan pathogens, mediating interactions between parasites and between parasites and

host cells (Wang et al., 2022). Here we describe that *C. parvum* sporozoites release two types of EVs that, based on their size, we have here classified as large extracellular vesicles (LEVs) and small extracellular vesicles (SEVs). These vesicles exhibited a certain difference in their protein composition, but also presented common molecules including one of the most antigenic *C. parvum* component, namely glycoprotein GP60 (Allison et al., 2011), also known as GP40/GP15.

2 Materials and methods

2.1 Parasites and excystation procedure

Fresh *C. parvum* oocysts (Iowa strain) were supplied by Bunch Grass Farm (Deary, Idaho USA), stored at 4°C in PBS with penicillin (1000 U.I./ml) and streptomycin (1 mg/ml). The excystation procedure was performed as follows: aliquots of 1×10^7 oocysts per ml were pelleted at $376 \times g$, for 5 min, resuspended in 1 ml of 10 mM HCl, and then incubated at 37°C for 10 min. Oocysts were pelleted again as above and resuspended in 1 ml of excystation medium (D-MEM containing 2 mM sodium taurocholate); they were maintained at 15°C, for 10 min, and then moved to 37°C to induce the excystation. Excystation mixtures were sampled at various times after the induction.

2.2 Expression of recombinant CpRom1 and CpGRASP and production of the corresponding antisera

The CpRom1 and CpGRASP coding sequence (monoexonic genes without introns) were directly amplified from *C. parvum* genomic DNA (Iowa strain).

2.2.1 Cloning, expression, and purification of recombinant CpRom1

Recombinant 6His-CpRom1 was obtained as follows: the CpRom1 coding sequence was amplified with AACGAGCTC GATATGTCGGATTTTGTTCATCA as the forward primer including the *SacI* (underlined) restriction site, and TCCC CCGGGTTCATCAAGAAAAATCATATCCAAATA as the reverse primer including the *SmaI* (underlined) restriction site. Amplification with 2X Phusion Flash High fidelity PCR Master Mix (Finnzymes) was performed using 80 ng of genomic DNA as template as follows: 95°C for 5 min, 35 cycles of 94°C for 15 sec, 50°C for 15 sec, 72°C for 4 min, and a final extension at 72°C for 10 min in a Veriti 96 well thermal cycler (Applied Biosystem). Amplicons were purified with QIAquick PCR Purification Kit (Qiagen GmbH, Hilden, Germany) and digested with *SacI* and *SmaI* restriction enzymes (New England Biolabs). Resulting fragment was then ligated in the *SacI* and *SmaI* digested pQE80 vector (Qiagen GmbH, Hilden, Germany) using the Quick Ligase kit (New England Biolabs), and the ligation mix was used to transform the *Escherichia coli* M15 strain. Positive clones were

selected on LB agar plates with 100 µg/ml ampicillin and 25 µg/ml kanamycin by PCR screening; recombinant plasmid with recombinant CpRom1 ORF was sequenced to check the fusion with the histidine-tag coding sequences at its N-terminus. For 6His-CpRom1 purification, 20 ml of an overnight culture of recombinant bacteria were inoculated in 1 l of LB with 100 µg/ml ampicillin and 25 µg/ml kanamycin, and cultured at 37°C, with vigorous shaking, until a 0.6 OD was reached; then, 1 mM IPTG was added to the culture and the bacterial growth continued for additional 3 h. Bacteria were pelleted first at $1,503 \times g$ for 10 min, resuspended in 100 ml cold PBS and centrifuged again at $3,381 \times g$ for 20 min. Then, the pellet was resuspended in 20 ml of denaturing buffer A (100 mM NaH₂PO₄, 10 mM Tris-HCl, 6 M guanidine-HCl, pH 8.0), and stirred at 25°C, overnight; the corresponding lysate was clarified by centrifugation at $9,391 \times g$, for 30 min. Then, 5 ml of 50% Ni-NTA resin was added and the mix was gently stirred for 60 min, at 25°C; the slurry was loaded slowly on a 10 ml column to pack the resin and then washed with 40 ml (8 x 5 ml wash) of buffer C (100 mM NaH₂PO₄, 10 mM Tris-HCl, 8 M urea, pH 6.3). Purified protein was eluted with 4 aliquots of 2.5 ml of buffer D (100 mM NaH₂PO₄, 10 mM Tris-HCl, 8 M urea, pH 5.9) and with 4 aliquots of 2.5 ml of buffer E (100 mM NaH₂PO₄, 10 mM Tris-HCl, 8 M urea, pH 4.5). Pooled fractions from buffer D and pooled fractions from buffer E were extensively dialyzed against PBS with increasing concentrations of glycerol (from 10% to 50%) in Slide-A-Lizer™ (ThermoFisher) dialysis cassettes with a cut-off of 10 kDa.

2.2.2 Cloning, expression and purification of recombinant CpGRASP

To clone the CpGRASP coding sequence, the following forward primer CCGGATCCGGAGGTGCGCAAACCAAAC including *BamHI* restriction site (underlined) and reverse primer CTCCCGGGTTATATTTCTCCTTGGTCTGTG including *SmaI* restriction site (underlined) were used. PCR amplification was performed with Hot Star Taq Plus (Qiagen) using 5 ng of genomic DNA as template and these PCR conditions: 95°C for 5 min, 35 cycles of 94°C for 15 sec, 55°C for 15 sec, 72°C for 4 min, and a final extension at 72°C for 10 min. Reactions were conducted in a Veriti 96 well thermal cycler (Applied Biosystem). The amplified fragment was digested with *BamHI* and *SmaI* restriction enzymes and ligated in pQE80 vector (Qiagen) digested with the same enzymes, using Quick Ligase kit (New England Biolabs). Ligation was used to transform *E. coli* M15 host strain, positive colonies were selected by PCR screening, and amplicons were sequenced to verify the fusion of histidine tag at the 5'-end of the inserted CpGRASP sequence. The histidine-tagged CpGRasp (6His-CpGRASP) was then purified as above.

2.2.3 Production of specific mouse antisera for 6His-CpRom1 and 6His-CpGRASP

To produce specific antisera for 6His-CpRom1 and 6His-CpGRASP, Balb-C mice were immunized with the following schedule: i) 100 mg of protein plus complete Freund adjuvant as first inoculum; ii) 100 mg of protein plus incomplete Freund

adjuvant as second inoculum, 30 days after the first inoculum; iii) a final inoculum with 100 mg of protein in PBS, 30 days after the second inoculum. Mice were bled 15 days after the last inoculum and 150–300 ml of serum was obtained from each mouse.

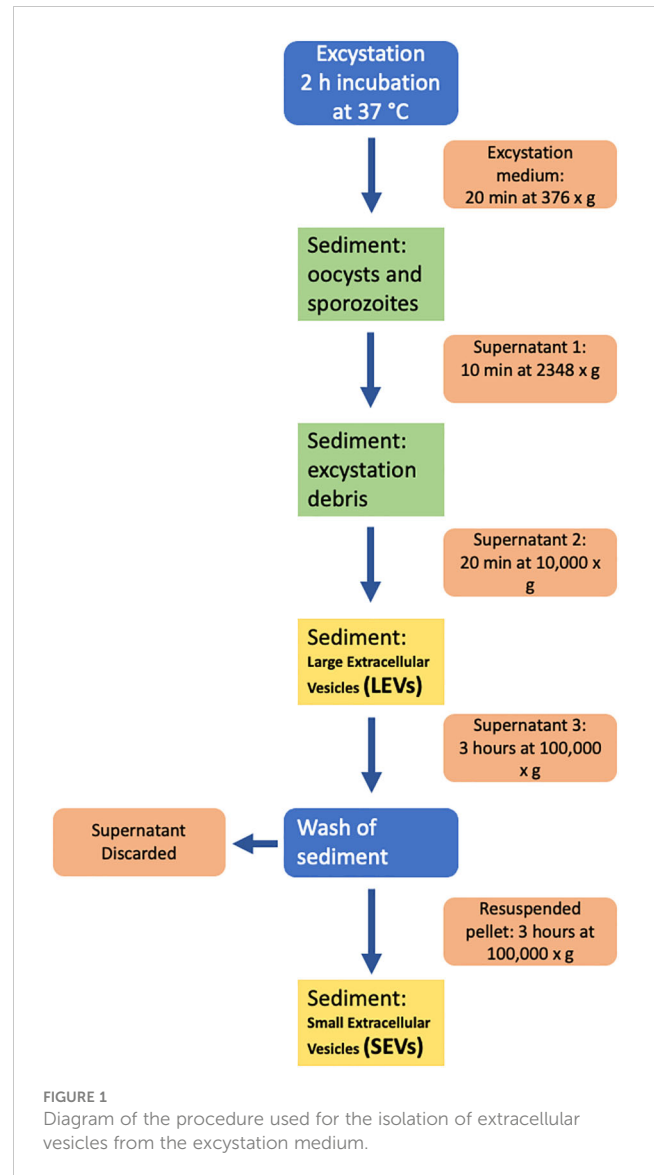
2.3 Isolation of extracellular vesicles from the excystation medium by differential centrifugation

Sporozoite microvesicles were prepared from the excystation medium of fresh oocyst aliquots after 2 h incubation at 37°C; excystation was blocked by placing samples on ice for 5 min. All subsequent manipulations were performed on ice and centrifugation steps were performed at 4°C. To remove most of oocysts and sporozoites, the excystation medium was centrifuged at 376 × g, for 20 min; the resulting supernatant was centrifuged again at 2,348 × g, for 10 min, to remove residual oocysts, sporozoites, and excystation debris. To isolate EVs, supernatant was transferred to 1.5 ml tubes (Eppendorf), centrifuged for 20 min at 10,000 × g and the pellet containing LEVs resuspended in 100 µl of ice-cold PBS. To isolate SEVs, the supernatant was transferred to new tubes (Beckman Coulter) and ultracentrifuged on a TLA 120.2 rotor (Beckman Coulter) at 100,000 × g for 3 h. The supernatant was discarded, and the pellet was resuspended in 1.2 ml of ice-cold PBS and recentrifuged as above. The final pellet containing SEVs was resuspended in 100 µl of ice-cold PBS. All the procedure is schematized in Figure 1.

2.4 Western blot analysis

Proteins in the excystation medium and supernatants after ultracentrifugation were precipitated with 10% ice-cold trichloroacetic acid (TCA)/0.015% (w/v) sodium deoxycholate (DOC). After 10 min on ice, samples were microfuged and the pellets were washed twice with 0.5 ml of ice-cold acetone, air dried, resuspended in 50 µl of lysis buffer (1% w/v SDS, 1% v/v Triton X-100, 0.5% w/v DOC, 10 mM 1,4-dithiothreitol (DTT), 1 mM EDTA) containing 1 µl/ml of Protease Inhibitor Cocktail (Sigma-Aldrich), and incubated for 5 min at 70°C in ThermoMixer® (Eppendorf).

Pellets after centrifugation (LEVs) and ultracentrifugation (SEVs) were resuspended in 50 µl of lysis buffer containing 1 µl/ml of Protease Inhibitor Cocktail (Sigma-Aldrich) as above. Samples were boiled in Laemmli sample buffer before separation by SDS-PAGE on 4–20% TGX™ precast gels (Bio-Rad, Hercules, CA, USA). Gels were transferred to nitrocellulose membranes (Bio-Rad), which were then blocked in PBS with 5% non-fat milk in 0.1% Tween-20. Blots were incubated with primary antibodies, at 4°C, overnight. For recombinant 6His-CpRom1 and 6His-CpGRASP, blots were incubated with mouse monoclonal RGS-His antibody (Qiagen) diluted 1:1,000. Blots for CpRom1 were probed with mouse pre-immune and CpRom1 immune serum 1 diluted 1:250, while blots for CpGRASP were probed with mouse pre-immune and anti-CpGRASP serum diluted 1:100. For all blots, incubation with secondary antibodies was conducted for 1 h, at 25°C, with goat



anti-mouse IgG-HRP conjugate (Bio-Rad, Hercules, CA USA) diluted 1:3,000. Detection of proteins was performed using Pierce ECL substrate (ThermoFisher) and bands were visualized with a ChemiDoc MP Imaging System (Bio-Rad, Hercules, CA, USA).

2.5 Ultrastructural analysis and immunolocalisation of extracellular vesicles by transmission electron microscopy

For negative staining in transmission electron microscopy (TEM), samples of LEVs and SEVs were suspended in 50 µl of 2.5% w/v glutaraldehyde in 0.1 M sodium cacodylate and incubated at 4°C, overnight. Samples (20 µl) were deposited by successive applications on carbon-coated grids for electron microscopy; they were left to adsorb for 20 min, and the excess fluid was blotted with filter paper. A contrasting solution (5 µl) made of 2% w/v phosphotungstic acid was added on grids and air dried. Samples

were observed by a PHILIPS Morgagni 268 TEM (FEI - Thermo Fisher) (Théry et al., 2006). For immunolocalization, LEVs and SEVs pellets were suspended in 100 µl of PBS, and aliquots of 20 µl were adsorbed on carbon-coated grids for electron microscopy, for 20 min. Samples were air dried and transferred to a drop of 2% w/v paraformaldehyde, for 5 min. After two washes with PBS, the grids were floated on PBS drops containing 0.1 M glycine for 30 min, washed with PBS, blocked with PBS containing 5% goat serum and 1% w/v BSA, for 30 min, and washed with PBS containing 0.05% w/v TWEEN 20 and 1% w/v BSA (PBS/BSA/TW). Then grids were floated on rabbit polyclonal anti-ID2 serum (1:10) in PBS/BSA/TW, for 1 h, at 25°C, rinsed in the same buffer, incubated on 10 nm gold-conjugated goat anti-rabbit IgG (SIGMA) (1:50), for 1 h, rinsed again in buffer PBS/BSA/TW and treated with 1% glutaraldehyde, for 5 min. Finally, the samples were contrasted and embedded in a 1:9 mixture of 4% uranyl acetate and 2% methyl cellulose, respectively, for 10 min, on ice. The samples were air dried and analyzed by a PHILIPS Morgagni 268 TEM (FEI - Thermo Fisher) (Théry et al., 2006).

For ultrathin sections, 1 ml of excystation mixture (taken 30 min after induction) was loaded onto a 1 ml syringe and filtered with a 5 µm disposable filter Millex-SV (Millipore) to remove residual non-excysted and empty oocysts. Purified sporozoites were fixed in 2.5% w/v glutaraldehyde, 2% paraformaldehyde, 2 mM CaCl₂ in 0.1 M sodium cacodylate, pH 7.4, and processed according to Perry and Gilbert (1979). Parasites were washed in cacodylate buffer and post-fixed with 1% OsO₄ in 0.1 M sodium cacodylate, for 1 h, at 25°C; then, they were treated with 1% tannic acid in 0.05 M cacodylate buffer, for 30 min, and rinsed in 1% sodium sulphate, 0.05 M cacodylate, for 10 min. Post-fixed specimens were washed, dehydrated through a graded series of ethanol solutions (from 30% to 100% ethanol) and embedded in Agar 100 (Agar Scientific Ltd, UK). Ultrathin sections, obtained by an UC6 ultramicrotome (Leica), were stained with uranyl acetate and Reynolds lead citrate and examined at 100 kV with a PHILIPS EM208S TEM (FEI - ThermoFisher) equipped with the Megaview III SIS camera (Olympus). Statistical analysis of vesicle sizes was performed with GraphPad Prism 10 (Dotmatics).

2.6 Scanning electron microscopy

1x10⁷ *C. parvum* oocysts (see above) were induced to excystation. At various times (from 0 to 30 min), the samples were fixed with 2.5% glutaraldehyde in 0.1 M sodium cacodylate buffer, and 30 µl were left to adhere to polylysine-treated round glass coverslips (Ø 10mm), for 1 h, at 25°C. Samples were processed for scanning electron microscopy (SEM) as previously described with slight modifications (Shively and Miller, 2009). Briefly, samples were post-fixed with 1% OsO₄ in 0.1 M sodium cacodylate, for 1 h, at 25°C, and were dehydrated through a graded series of ethanol solutions (from 30% to 100%). Then, absolute ethanol was gradually replaced with a 1:1 solution of hexamethyldisilazane (HMDS) in absolute ethanol, for 30 min, and successively by pure HMDS, for 1 h. Finally, HMDS was completely removed, and samples were left to dry in a desiccator, at room temperature, for 2 h, overnight. Then dried samples were

mounted on stubs, carbon coated and analyzed with a FE-SEM Quanta Inspect F (FEI, Thermo Fisher Scientific).

2.7 Fluorescent labelling of extracellular vesicles and flow cytometric analysis

Fluorescent labelling of proteins of LEVs and SEVs was conducted as follows: pellets were resuspended in 50 µl PBS containing 10 µM Alexa Fluor 647 NHS Ester (Life Technologies) and incubated for 30 min, at 25°C. Then pellets were resuspended again in 50 µl PBS containing 10 µM CFDA-SE (CFSE) (Life Technologies), for 30 min, at room temperature. Reactions were stopped by adding 2 µl of 100 mM L-glutamine. Fluorescent LEVs and SEVs from the corresponding pellets were analysed by flow cytometry (FC) with a Gallios Flow Cytometer (Beckman Coulter) using an optimised procedure, as previously described (Coscia et al., 2016). Briefly, the instrument was set using the Flow Cytometry Sub-micron Particle Size Reference Kit providing green-fluorescent beads of different sizes (Invitrogen™) to establish the correct threshold value to apply on the 525/40 nm fluorescent channel (FL1). This procedure allowed to create gates of the following dimensions: ≤200 nm, 500 nm and 1 µm. Sample analysis was performed by mixing 5 µl of fluorescent vesicles with 20 µl of Flow-Count Fluorospheres (Beckman Coulter) in a final volume of 200 µl of PBS to determine absolute counts. Fluorescent populations were analysed by plotting fluorescence at 525/40 nm (FL1) versus log scale side scatter (SSarea). Sample acquisition was stopped at 2,000 Flow-Count Fluorospheres events. The total number of fluorescent vesicles was established according to the formula: $x = \{[(y \times a)/b]/c\} \times d$, where y = events counted at 2,000 counting beads; a = number of counting beads in the sample; b = number of counting beads registered (2,000); c = volume of sample analysed; and d = total volume of exosome preparation. Kaluza Software v. 2.0 (Beckman Coulter) was used for FC analysis.

2.8 Iodixanol gradient separation of extracellular vesicles

Freshly labelled fluorescent LEVs and SEVs from 1 x 10⁷ oocysts were diluted in 0.3 ml of PBS. Then, fluorescent samples were mixed with 1 ml of 60% iodixanol solution (Optiprep™, Sigma-Aldrich), overlaid with 0.5 mL of 40%, 0.5 mL of 30% and 1.8 mL of 10% of iodixanol solutions and floated into the gradient by ultracentrifugation in a SW60Ti rotor (Beckman) at 192,000 × g , for 18 h, stopping without brake. After centrifugation, 12 fractions of 330 µl were collected from the top of the tube, diluted 40- to 80-fold with PBS and analysed by FC. Fraction densities were determined by refractometry. Gradient solutions were produced from the working solution (WS) by dilution with the HM solution. WS was prepared by mixing 5 vol of OptiPrep™ with 1 vol of 0.25 M sucrose, 6 mM EDTA, 60 mM Tris-HCl, pH 7.4; HM solution also contained 0.25 M sucrose, 1 mM EDTA, 10 mM Tris-HCl, pH 7.4. Gradient fractions of fluorescent LEVs and SEVs were analysed by FC with a Gallios Flow Cytometer (Beckman Coulter) using an optimised procedure, as previously described (Coscia et al., 2016).

2.9 Nanoparticle tracking analysis

For nanoparticle tracking analysis (NTA), 20×10^6 oocysts were excysted and EVs were collected in two fractions (LEVs and SEVs respectively) as above. LEVs and SEVs pellets were diluted in 500 μ l PBS and quantified by NTA performed with a NanoSight NS300 system (Malvern Instruments, UK). Camera level was set at 14-15 for all recordings, until all particles were distinctly visible, and camera focus was adjusted to make particles appear as sharp individual dots. Three 60-second videos were recorded for each sample under the following conditions: cell temperature: 23°C; syringe flow: 40 μ l/s. Detection threshold was set at 5 and other settings were kept at default. After capture, the videos have been analysed by the in-built NanoSight Software NTA 3.4.4.

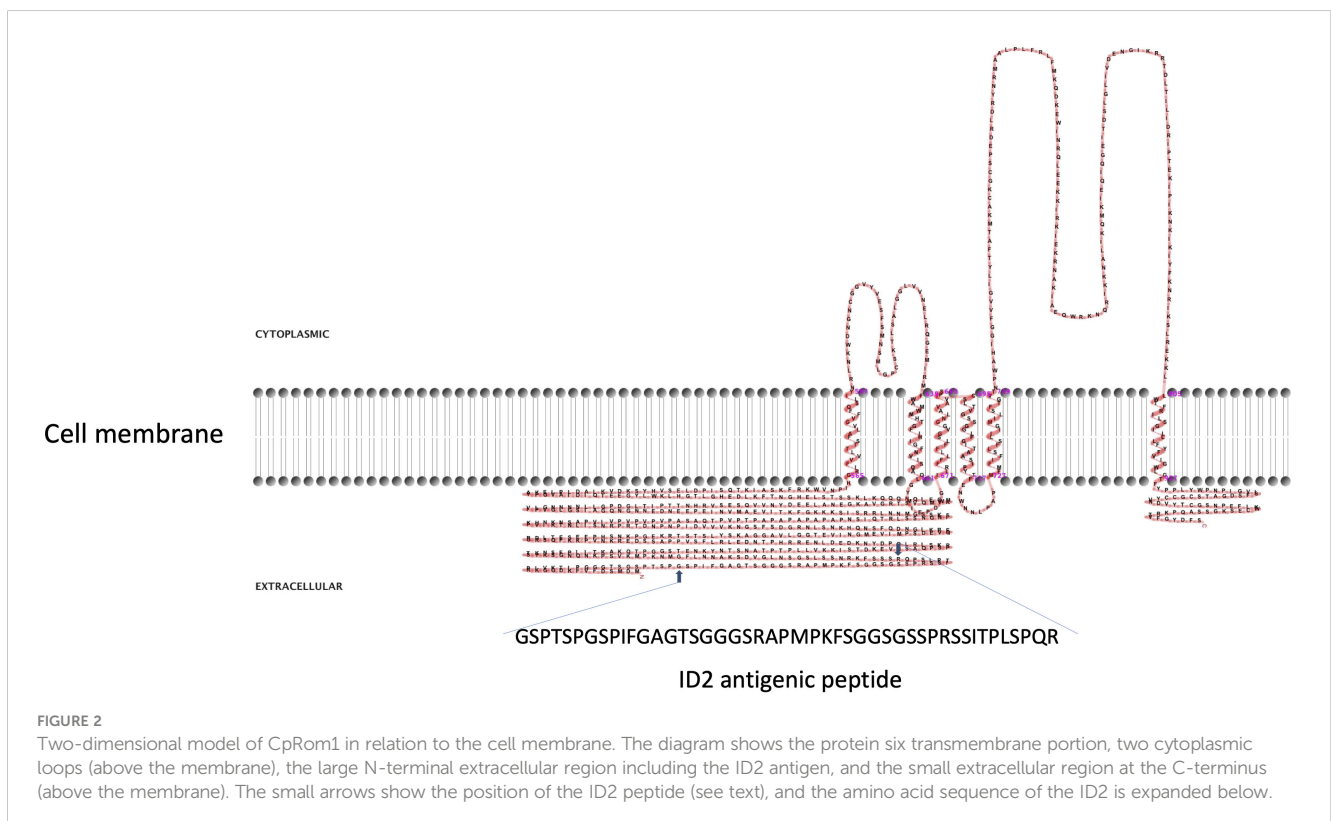
2.10 Proteomic analysis

Proteins from LEVs and SEVs were separated on a precast 4-15% T SDS-PAGE (Bio-Rad, Hercules, CA USA) and stained with Coomassie G-250. Gel lanes were cut into 9 slices that were separately *in-gel* reduced, alkylated with iodoacetamide and digested with trypsin, as previously reported (Salzano et al., 2013). Peptide mixtures were then desalted by μ ZipTipC18 tips (Millipore) before nano-liquid chromatography-electrospray ionization-Orbitrap tandem mass spectrometry (nLC-ESI-Q-Orbitrap-MS/MS) analysis, which was performed on a Q-Exact Plus mass spectrometer equipped with UltiMate 3000 HPLC RSLC nano system (Thermo Fischer Scientific, USA). Peptides were separated on an Easy C18 column (100 \times 0.075 mm, 3 μ m) at a flow rate of 300 nl/min, using a

linear gradient from 5 to 40% of acetonitrile containing 0.1% formic acid (solvent B) in 0.1% formic acid (solvent A), over 60 min. Mass spectra were acquired at nominal resolution 70,000 in the range m/z 350-1500, and data-dependent automatic MS/MS acquisition was applied to the ten most abundant ions (Top10), enabling dynamic exclusion with repeat count 1 and exclusion duration 30 s. The mass isolation window and the collision energy for peptide fragmentations were set to m/z 1.2 and 32%, respectively. Raw data from nLC-ESI-Q-Orbitrap-MS/MS analysis were searched by MASCOT v2.6.1, (Matrix Science, UK) node within Proteome Discoverer suite, against a *C. parvum* (strain Iowa II) database of protein sequences (4076 sequences) retrieved from CryptoDB site (<https://cryptodb.org>), and results were merged into a single mgf file to obtain proteins identified in LEVs and SEVs fractions. The following parameters were used for protein identification: mass tolerance values of 20 ppm and 0.05 Da for precursor and fragment ions, respectively; trypsin as proteolytic enzyme with maximum missed-cleavage sites of 2; Cys carbamidomethylation as fixed modification; Met oxidation, Asn/Gln deamidation and pyroglutamate formation at Gln/Glu as variable modifications. A significance threshold of $p < 0.05$ was set for protein identification, and molecular candidates with at least 2 significantly matched peptide sequences and a protein Mascot score > 50 were further considered for definitive assignment, after manual spectra visualization and verification.

2.11 Bioinformatic analysis

The sequence of CpRom1 (CryptoDB: cgd6_760) and CpGRASP (CryptoDB: cgd7_340) were downloaded at CryptoDB



site (<https://cryptodb.org>). Similarity searches with DNA and protein sequences were conducted on non-redundant GenBank databases using the BLAST program (<https://blast.ncbi.nlm.nih.gov/Blast.cgi>). The prediction of transmembrane domains was performed at TMHMM-2.0 (<http://www.cbs.dtu.dk/services/TMHMM/>) and at Phobius (<https://phobius.sbc.su.se/index.html>). Prediction of structural and functional domains was performed at Pfam (<http://pfam.xfam.org>) and Prosite (<https://prosite.expasy.org>). The bidimensional representation of CpRom1 (Figure 2) was realized with TMRPres2D software (<http://bioinformatics.biol.uoa.gr/TMRPres2D/download.jsp>). Searches for potential cleavage sites by proteases were performed at PeptideCutter (<https://www.expasy.org/resources/peptidecutter>) and at ProP 1.0 server (<http://www.cbs.dtu.dk/services/ProP/>) for Arg and Lys propeptide cleavage sites (furin-like). Searches for potential GPI-anchor were performed at GPI Modification Site Prediction (https://mendel.imp.ac.at/gpi/gpi_server.html). Subcellular localization was predicted by DeepLoc-1.0 (<http://www.cbs.dtu.dk/services/DeepLoc/>) and was reported only when the probability was higher than 50%. Protein-protein interaction networks were obtained with STRING v.12.0 (<https://string-db.org>). Searches for proteins associated with extracellular vesicles were performed in the following databases: ExoCarta (<http://www.exocarta.org>) and Vesiclepedia (<http://www.microvesicles.org>).

3 Results

3.1 Characterization of CpRom1 expressed in oocysts and sporozoites

CpRom1 rhomboid was previously identified using the 46 amino acids long ID2 peptide (Trasarti et al., 2007). A prediction based on

the protein sequence showed that CpRom1 consists of 990 residues and has a theoretical mass of 109.3 kDa; this makes CpRom1 the largest rhomboid ever described. Computational predictions showed that CpRom1 has a large N-terminal region of approximately 500 amino acids, which includes the ID2 peptide (Figure 2). This large portion of the protein is exposed towards the extracellular environment and was not associated with a recognizable domain. A well-distinguishable rhomboid domain, consisting of 450 amino acids arranged in six transmembrane helices that compose the proteolytic site, was also predicted occurring at the protein C-terminal region.

To identify the native CpRom1 rhomboid, we prepared a mouse polyclonal serum reacting with the full-length protein. To this end, a fusion protein with six histidine-tag (6His-CpRom1) was expressed in bacteria, purified by Ni-NTA chromatography and used to immunize Balb-C mice. The polyclonal mouse antiserum was used in Western blot experiments on sporozoite lysates, in which a band of approximately 110 kDa was recognized, in agreement with the above-reported theoretical mass (Figure 3). However, the serum also detected a smaller band migrating at about 75 kDa, which might represent a cleaved form of the 110 kDa protein. These CpRom1 forms were present in resting oocyst at time 0 of excystation (Figure 3A), with a similar amount of the 110 kDa form in unexcysted oocyst and sporozoites, whereas a lower amount of the 75 kDa species was detected after excystation. The search for putative cleavage sites was ineffective by the presence of hundreds of possible proteolytic cuts along the amino acid sequence. Probably, the latter protein form is quickly degraded after excystation. A significant amount of CpRom1 was also detectable in the supernatant of excystation medium after eliminating sporozoites and residual oocysts. In fact, TCA precipitates of excystation medium after 30 min of incubation, when probed with anti-CpRom1 serum, revealed a distinctive band of 110 kDa

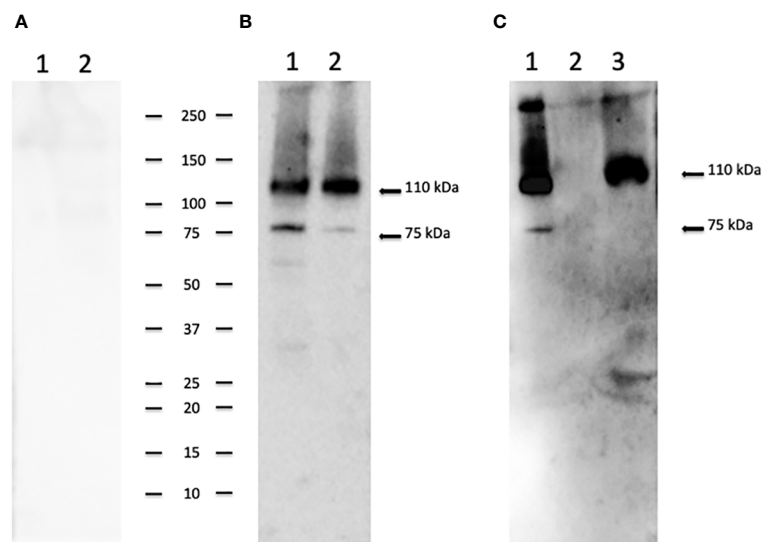


FIGURE 3

CpRom1 assessment in oocyst and sporozoite samples by Western blotting. (A) Western blotting on oocysts and sporozoites lysates probed with mouse pre-immune serum: 1, lysate from 5×10^6 unexcysted oocysts; 2, lysate from 5×10^6 oocysts after 30 min of excystation. (B) Western blotting on oocysts and sporozoites lysates probed with mouse anti-CpRom1 serum: 1, lysate from 5×10^6 unexcysted oocysts; 2, lysate from 5×10^6 oocysts after 30 min of excystation. (C) Western blotting on TCA-precipitated supernatant of excystation medium probed with mouse anti-CpRom1 serum: lysate from 1×10^7 oocysts after 30 min of excystation, TCA-precipitated supernatant before the induction of excystation. Ladder shows molecular weights expressed in kDa.

(Figure 3B). Given the presence of six transmembrane domain in CpRom1, which eventually hampers its release in the excystation medium, we hypothesized that CpRom1 is released in association with membranous vesicles.

3.2 CpRom1 is associated with released extracellular vesicles during the excystation

To test the hypothesis reported above, we developed an ultracentrifugation protocol to separate extracellular vesicle populations from the excystation medium, after preventive removal of oocyst-sporozoite residues. A schematic representation of the procedure is shown in Figure 1. Depending on centrifugation conditions, two types of *C. parvum* EVs were selectively recovered that were tentatively classified as large extracellular vesicles (LEVs) and small extracellular vesicles (SEVs). Protein extracts from LEVs and SEVs were then assayed for the presence of CpRom1 by dedicated immunoblotting. Results showed that a protein band of 110 kDa was observed in the LEVs extracts, but not in the SEVs counterparts (Figure 4A).

To demonstrate that CpRom1 is associated with EVs, we assayed *C. parvum* LEVs and SEVs by negative staining immunoelectron microscopy using a polyclonal rabbit serum directed against the ID2 peptide (Trasarti et al., 2007). In agreement with the immunoblotting results, numerous strong immunogold signals were detected on the

surface of large vesicles (> 150 nm) occurring in LEVs (Figure 4 and Supplementary Figure S1). A negative control with pre-immune rabbit serum showed sporadic signals with one or two gold particles for microscopic field (Figure 4C). We also tested SEVs by negative staining immunoelectron microscopy with the same anti-ID2 serum, and we observed small vesicles that were not labelled by immunogold particles (Figure 4D).

All together, these results suggested that sporozoites release two different types of extracellular vesicles, among which those present in LEVs are generally larger than those in SEVs. Immunolabelling for CpRom1 showed the presence of this protein only in LEVs.

3.3 Characterization of sporozoite extracellular vesicles by flow cytometry, electron microscopy and nanoparticle tracking analysis

To further characterize sporozoite EVs, we labelled vesicles in LEVs and SEVs sequentially with two different fluorescent probes: at first, we used the hydrophilic dye NHS-AF647, which labels proteins on the external surface of the vesicles; then, we utilized the lipophilic dye CFSE, which passively diffuses into vesicles and labels also internal vesicular proteins. Then, vesicles contained in LEVs and SEVs were separated by density gradient centrifugation on an iodixanol gradient, and the fluorescent content of the resulting fractions was analysed by flow cytometry. FC analysis showed that

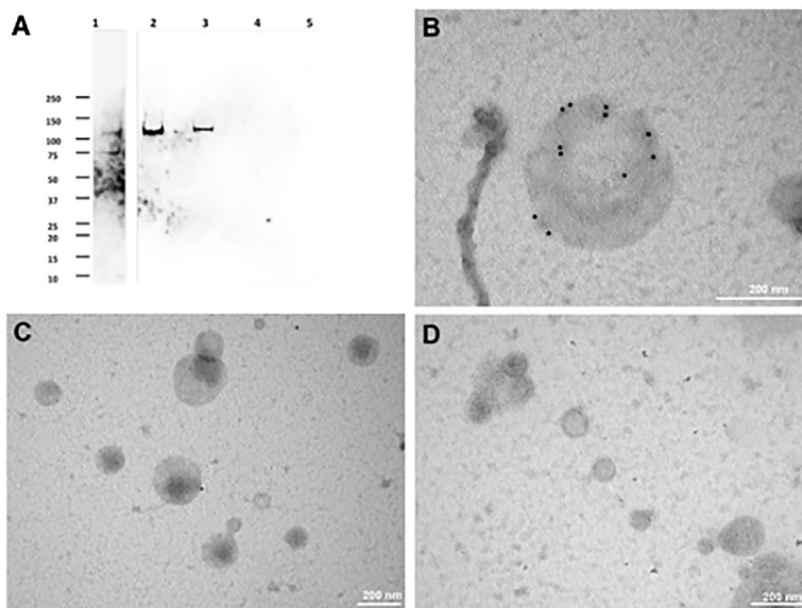


FIGURE 4

Immunolocalization of CpRom1 by Western blotting on microvesicle extracts and immunoelectron microscopy of the corresponding extracellular vesicles. (A) Immunoblotting with anti-CpRom1 mouse serum: 1, unexcysted oocysts lysate; 2, excysted sporozoites; 3, LEVs extract; 4, SEVs extract; 5, TCA-precipitated supernatant of SEVs. (B) Negative staining immunoelectron microscopy of LEVs labelled with anti-CpRom1 rabbit serum. (C) Negative staining immunoelectron microscopy of LEVs labelled with pre-immune rabbit serum. (D) Negative staining immunoelectron microscopy of SEVs labelled with anti-CpRom1 rabbit serum.

LEVs comprised a heterogeneous population of intact vesicles ranging in size from 50 nm to over 250 nm (Figures 5A, B). Notably, LEVs were often clumped together (Figure 6A), contributing to the highest density of extracellular vesicles according to FACS analysis. In contrast, SEVs displayed a more homogeneous composition (Figure 5C), consisting of smaller intact vesicles with sizes below 150 nm (Figure 6B).

EVs were also quantified by FC. We observed that LEVs are more numerous than SEVs; moreover, both vesicle populations presented a peak in fractions with density ranging between 1.08–1.14 g/ml (Figure 6D). To establish more specifically the size of vesicles occurring in LEVs and SEVs, the diameter of a hundred vesicles was measured through electron microscopy, and the corresponding micrographs were subjected to statistical analysis. This experiment revealed that LEVs (Figure 6A) and SEVs (Figure 6B) had a different mean size, with the former and latter vesicles showing an average diameter of 150 nm and 60 nm, respectively (Figure 6C).

Finally, LEVs and SEVs were also measured and quantified by NTA; results of this experiment revealed a different size distribution between the two types of vesicles. LEVs (Figure 6D) were distributed in three different peaks, with the main one at 176 nm; the corresponding modal class was of 181.3 nm (Figure 6F). Differently, most of SEVs were accumulated in a peak at 102 nm (Figure 6E) and the modal class was of 105 nm (Figure 6F). Full details of NTA are reported in [Supplementary Report 1](#) for LEVs and [Supplementary Report 2](#) for SEVs. Importantly, NTA allowed to estimate the total number of EVs released by sporozoites (Figure 6F), which were $5.8 \cdot 10^8$ LEVs and $5.8 \cdot 10^8$ SEVs from the excystation of

$2 \cdot 10^7$ oocysts. Overall, this result showed that each sporozoite releases at least a dozen LEVs and SEVs after the excystation.

3.4 Ultrastructural characterization of vesicles during the excystation

To capture images of vesicles at the time of their release from sporozoites, we performed SEM and TEM analysis of the excystation mixture at various time points (from 0 to 30 min) after the induction. Hence, we observed some sporozoites immediately after the egress from two oocysts (Figure 7A). Oocysts appeared as thin, empty envelopes; oocysts and sporozoites were surrounded by numerous vesicles of varying sizes scattered throughout the microscopic field. Similarly, we captured images at higher magnification showing two vesicles of different sizes at the very moment of their release from the sporozoite membrane (Figure 7B). Finally, we observed emerging vesicles from the apical part of a sporozoite (Figure 7C) as well as a vesicle of approximately 200 nm just released from the posterior part of another sporozoite (Figure 7D). All together, these images supported the origin of EVs, at least the larger ones, through budding of the external membrane.

Since SEVs have physical parameters like exosomes, which originate from intracellular multi-vesicular bodies (MVBs) (Van Niel et al., 2018; Barreca et al., 2023), we looked for a similar structure in the sporozoite cytoplasm. Electron microscopy images showed a vacuolar structure with internal membranes that resemble MVBs (Figures 8A, B). A similar MVB-like structure has not yet been described in *Cryptosporidium* spp. so far.

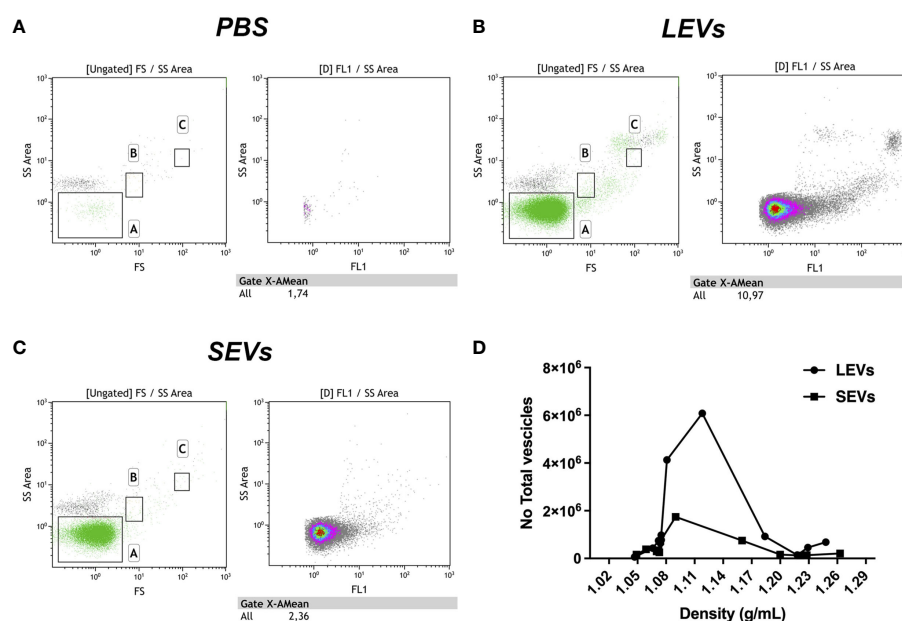


FIGURE 5

Flow cytometry analysis of gradient fractions of LEVs and SEVs. (A) PBS buffer used to resuspend EVs as negative control. (B) Dot plot of LEVs fraction at 1.1 g/ml density. (C) Dot plot of SEVs at 1.1 g/ml density. (D) diagram comparing the distribution of LEVs and SEVs in the gradient fractions. Left panels indicate gate dimensions (A \leq 200 nm, B=500 nm and C=1 μ m). Right dot plot panels show vesicles distribution in terms of fluorescence.

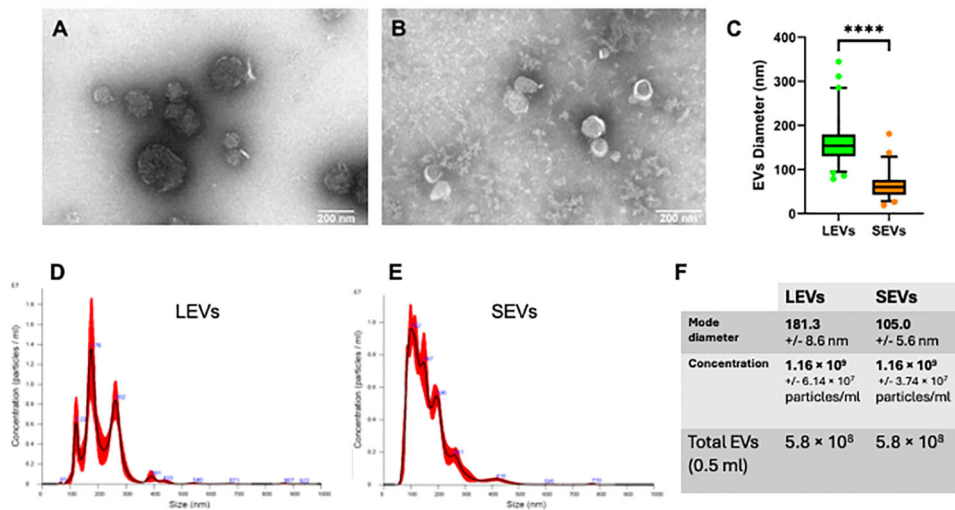


FIGURE 6

Physical characterization of LEVs and SEVs by electron-microscopy and nanoparticle tracking analysis (NTA). (A) TEM negative staining of LEVs. (B) TEM negative staining of SEVs. (C) graph showing the vesicle size distribution in LEVs (green) and SEVs (orange). Statistical analysis was based on TEM micrographs; dots indicate maximum and minimum values (****=p-value<0.0001, Mann-Whitney test). (D) graph showing the size distribution of LEVs as determined by NTA. (E) graph showing the distribution of SEVs as determined by NTA. (F) table reporting the mode diameter, the concentration of LEVs and SEVs, the total number of EVs (LEVs or SEVs) in 0.5 ml as determined by NTA.

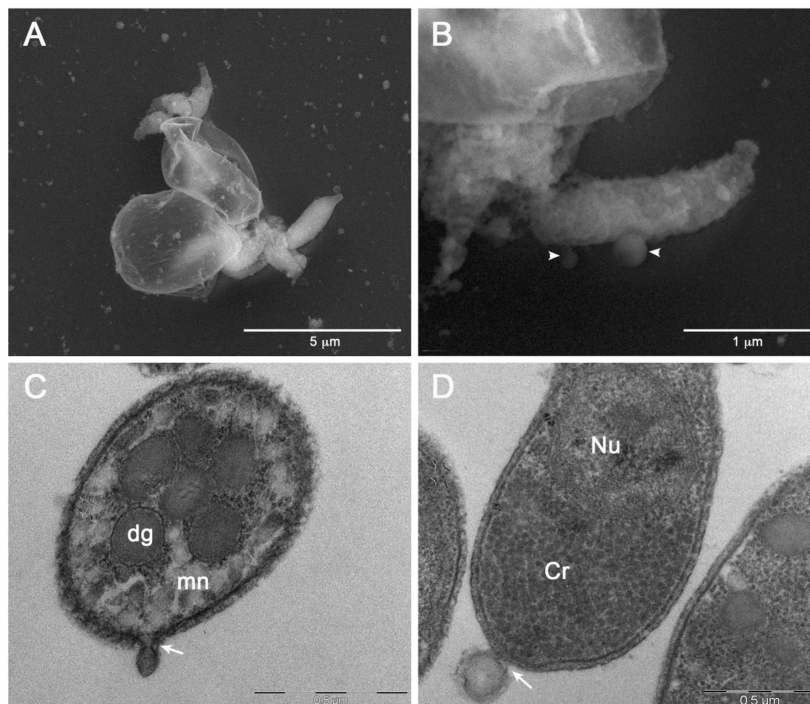


FIGURE 7

Electron microscopy images of EVs at their release from sporozoites. (A) Backscattered electron SEM micrograph of two excysted oocysts showing the release of vesicles during the sporozoites egress. (B) High magnification of an egressed sporozoite showing two budding vesicles (head arrows). (C) TEM micrograph showing the plasma membrane budding of a vesicle from the apical region of a sporozoite (white arrow). (D) TEM micrograph of a vesicle budding from the posterior region of a sporozoite. Dg: dense granules; mn: micronemes; Cr: crystalloid; Nu: nucleus.

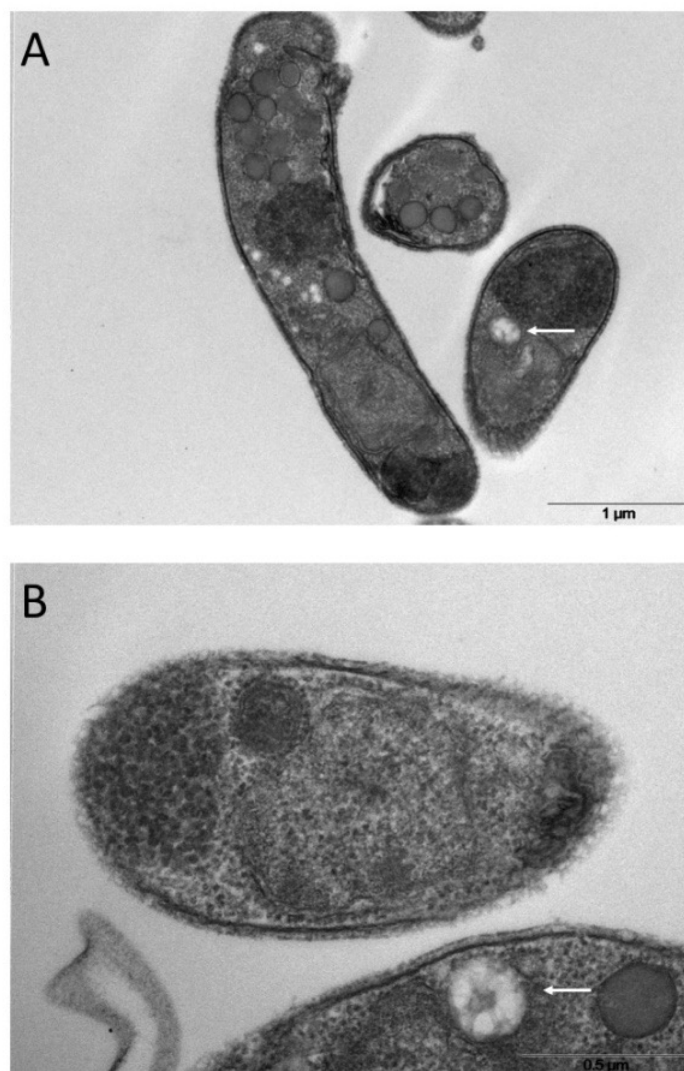


FIGURE 8

Ultrathin sections of excysted sporozoites (A, B) showing possible MVB-like organelles inside the cells (white arrows).

3.5 The Golgi protein CpGRASP is associated with LEVs but not with SEVs

No homologues of the most common mammalian proteins associated with exosomes, namely tetraspanins (e.g., CD63, CD81 or CD9) or endosomal sorting complex required for transport (ESCRT) proteins (eg, Alix and Tsg101) (Théry et al., 2018), were identified neither in the translated products of the *Cryptosporidium* genome through a dedicated bioinformatic analysis (data not shown) nor in the proteome of this parasites (Snelling et al., 2007) and its EVs (this study, see below). On the other hand, well-conserved *Cryptosporidium* homologs of proteins involved in vesicle trafficking were traced among those associated with the Golgi apparatus. In all eukaryotes, the Golgi complex is a central hub for the vesicle trafficking (Doyle and Wang, 2019), and Golgi

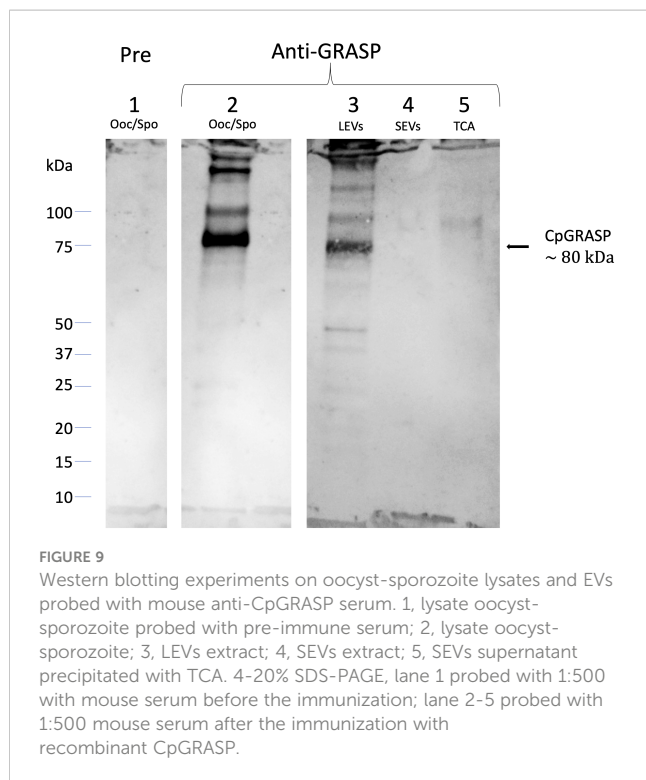
proteins might represent markers for tracking various types of vesicles. The Golgi reassembly and stacking proteins (GRASPs) belong to a protein family with a conserved similarity in all eukaryotes, and the *Cryptosporidium* homolog of these components (CpGRASP) was easily identified in CryptoDB. Moreover, following a search in different protein databases of extracellular vesicles and in the literature, GRASPs have been found in different types of EVs (Chua et al., 2012; Peres da Silva et al., 2018).

Accordingly, we proceeded to clone the gene for the *C. parvum* homolog of GRASPs to express a histidine-fusion protein in bacteria. The purified recombinant protein (6his-CpGRASP) was then used to generate a specific antiserum in mice. When probed with the anti-GRASP serum in Western blot experiments, a protein with an apparent mass of about 80 kDa band was identified in the

whole oocyst-sporozoite lysate (Figure 9); its measured molecular mass matched the expected value of the *C. parvum* GRASPs homolog (82.49 kDa). The same component with mass of 80 kDa band was also observed in LEVs extracts, while no band was detected in the SEVs extracts or in the supernatant following ultracentrifugation. The latter result suggested that the biogenesis of LEVs involves Golgi-derived vesicles unlike SEVs, which conversely did not show any evidence for the occurrence of CpGRASP.

3.6 Comparison of protein profiles of LEVs and SEVs by fluorescent labelling and SDS-PAGE electrophoresis

A first analysis regarding the protein content of sporozoite vesicles was performed by comparing the electrophoretic profiles of the two types of vesicles. To this end, we double-labelled LEVs and SEVs with NHS-AF647 (red) and CFSE (green) and analysed the corresponding protein profiles by SDS-PAGE (Dehghani and Gaborski, 2020). Figure 10 shows the image obtained by overlaying the green and red channels onto the electrophoretic protein profiles of LEVs and SEVs. Upon comparing the electrophoretic profiles, we identified distinct common bands (black arrows) as well as some prominent unique bands (white arrows) in SEVs. This method allowed a rapid generation of distinctive patterns for LEVs and SEVs and confirmed the occurrence of differences in the protein content of them. Of note, the SEVs profile exhibited a greater number of red bands indicating the likely presence of a greater number of surface proteins.



3.7 Proteomic analysis of LEVs and SEVs content

To identify *C. parvum* proteins present in above-reported vesicles, components of LEVs and SEVs were resolved by SDS-PAGE and stained with Coomassie G250. The resulting whole gel lanes (see Supplementary Figure S2) were divided into 9 slices that were further subjected to trypsinolysis and then to nLC-ESI-Q-Orbitrap-MS/MS analysis. Overall, we identified 60 *C. parvum* proteins of which 39 were in common between the two vesicle types; conversely, 5 were identified only in LEVs, and 16 were found exclusively in SEVs. All identified proteins are listed in Table 1, and details of the corresponding proteomic analysis are reported in Supplementary Table S1. The full annotation from CriptoDB for all assigned proteins is reported in Supplementary Table S2, which also includes presumptive information on the corresponding function, gene ontology (GO terms ID), assignment as membrane/soluble component, and cellular localisation.

According to functional predictions, the largest group of annotated proteins (14 in number) included enzymes related to cell metabolism, while the second set (12 in number) consisted of components involved in protein folding, such as heat shock proteins (HSPs) and molecular chaperones (Figure 11A). This latter group included 4 heat shock proteins 70 (HSP70s) and 2 heat shock proteins 90 (HSP90s) that may have a different subcellular localization, as inferred by the variable presence of signals and/or transmembrane domains. Additional protein categories were related to protein synthesis (9 in number), regulatory function (6 in number), cytoskeleton (3 in number), redox homeostasis (2 in number) and proteolysis (2 in number) (Figure 11A). The presumptive function remained unknown for 12 proteins.

All the proteins were also analysed *in silico* to identify signal peptide, transmembrane domain and endoplasmic reticulum retention signal portions, which are indicative traits of their subcellular localization. Thus, the largest group was composed of soluble components (34 in number) with a putative cytoplasmic localization (Figure 11B). A second group of 7 proteins showed a signal for sorting and/or retention in the endoplasmic reticulum. Six secretory proteins were identified due to the occurrence of a signal peptide at their N-terminus, whereas three showed a transmembrane domain. Finally, 2 proteins were predicted as nuclear components. Location of eight proteins remained unclear, as the potential location was assigned to subcellular compartments (*i.e.* mitochondrion, plastid, and lysosome), the existence of which is still unknown in *C. parvum*.

A putative interactome of EVs proteins was modelled by STRING interaction analysis. This search revealed a big network connecting 51 components (Supplementary Figure S3A and Supplementary Table S3), which was identified with a medium confidence (0.4). The involvement of most (85%) of the identified proteins in this network emphasized the occurrence of a functional assembly bridging different molecular processes, which seemed highly represented in EVs. When higher confidence (0.9) was used for the analysis, this interaction network was limited to include only 34 proteins (57%) and three main sub-networks

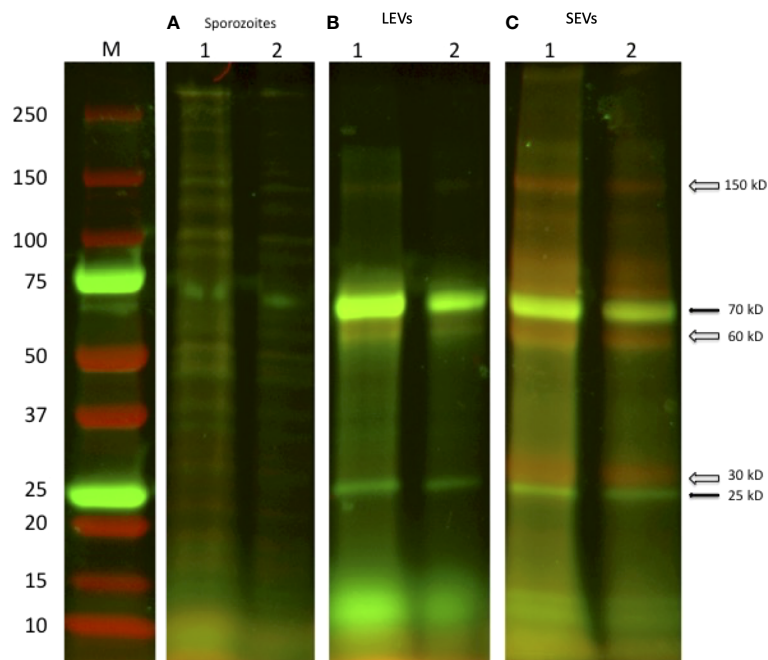


FIGURE 10
 SDS-PAGE of two independent excystation experiments followed by labelling with the fluorescent dyes NHS-AF647 (red) and CFSE (green) of the different stages of centrifugation. **(A)** 1: lysate of 1×10^7 oocysts; 2: lysate of sporozoite of 5×10^6 oocysts. **(B)** LEVs and **(C)** SEVs electrophoretic profiles, 1: sediment from 1×10^7 oocysts; 2: sediment from 5×10^6 oocysts, respectively. Black arrows indicate common green bands; open arrows indicate red bands present only in the extract of SEVs.

TABLE 1 List of identified proteins in *C. parvum* EVs by proteomic experiments.

Protein ID (CryptoDB)	Gene product (CryptoDB)	MW (kDa)	GO terms (CryptoDB) -Presumptive function and/or localization	EVs DB [1]	LEVs	SEVs
cgd1 3020-RA	Fructose-bisphosphate aldolase	38.5	glycolytic process	√	y	y
cgd1 3040-RA	Triosephosphate isomerase	27.4	glycolytic process gluconeogenesis	√	y	y
cgd1 870-RA	Peptidyl-prolyl cis-trans isomerase	22.9	protein peptidyl-prolyl isomerization/protein folding	√	y	y
cgd2 20-RA	Heat shock-70 protein	73.3	No Data	√	y	y
cgd2 3330-RA	Hsp70-protein	103	ATP binding	√	y	y
cgd2 3950-RA	Translation-elongation factor EF1B/ribosomal protein S6	27.6	translational elongation	√	y	y
cgd2 4320-RA	Thioredoxin/glutathione reductase selenoprotein	56.3	cell redox homeostasis	√	y	y
cgd3 1290-RA	14-3 -3 domain containing protein	28.6	No Data	√	y	y
cgd3 1540-RA	Signal peptide containing protein	185	No Data	√	y	y
cgd3 2090-RA	40S ribosomal protein Sae	28.3	Translation/Ribosome	√	y	y
cgd3 3370-RA	Uncharacterized protein	166	No Data	√	y	y
cgd3 3430-RA	Amine oxidase	199	amine metabolic process/copper ion binding	√	y	y
cgd3 3770-RA	Hsp90 protein	80.8	protein folding/ATP binding	√	y	y
cgd4 1940-RA	Nucleoside diphosphate kinase	16.8	nucleoside diphosphate phosphorylation	√	y	y
cgd4 2600-RA	UDP-glucose 4-epimerase	38.5	galactose metabolic process/UDP-glucose 4-epimerase activity	√	y	y
cgd4 3270-RA	Hsp70 protein	90.7	ATP binding	√	y	y

(Continued)

TABLE 1 Continued

Protein ID (CryptoDB)	Gene product (CryptoDB)	MW (kDa)	GO terms (CryptoDB) -Presumptive function and/or localization	EVs DB [1]	LEVs	SEVs
cgd4 740-RA	Thioredoxin peroxidase-like protein	21.8	peroxidase activity	√	y	y
cgd5 1960-RA	Enolase	48.4	glycolytic process/magnesium ion binding	√	y	y
cgd5 2020-RA	Cysteine-rich secretory protein. Allergen V5/Tpx-1-related	46.2	No Data	√	y	y
cgd5 2800-RA	Actin depolymerizing factor	15.5	actin filament depolymerization/actin cytoskeleton/actin binding	√	y	y
cgd5 3160-RA	Actin	42.1	No Data	√	y	y
cgd5 3360-RA	Adenylate kinase	24.2	adenylate kinase activity	√	y	y
cgd5 3740-RA	50S ribosomal protein L7e/L30e/S12e/Gadd45	15.8	translation/Ribosome	√	y	y
cgd6 1080-RA	Glycoprotein GP40	33.4	No Data	√	y	y
cgd6 120-RA	Disulfide-isomerase. Signal peptide plus ER retention motif	53.8	endoplasmic reticulum lumen/protein disulfide isomerase activity	√	y	y
cgd6 2450-RA	Glycogen/starch/alpha-glucan phosphorylase	104	carbohydrate metabolic process/glycogen phosphorylase activity	√	y	y
cgd6 2690-RA	FKBP-like peptidyl-prolyl isomerase	36.8	protein folding/peptidyl-prolyl cis-trans isomerase activity	√	y	y
cgd6 3790-RA	Glyceraldehyde-3-phosphate dehydrogenase	36.1	glycolytic process/glyceraldehyde-3-phosphate dehydrogenase (NAD+) (phosphorylating) activity	√	y	y
cgd6 4460-RA	Uncharacterized protein with Armadillo-like helical	276	No Data	√	y	y
cgd6 710-RA	Uncharacterized Secreted Protein	49.7	No Data	√	y	y
cgd7 1710-RA	Threonyl-tRNA synthetase	87.6	tRNA aminoacylation/cytoplasm/aminoacyl-tRNA ligase activity	√	y	y
cgd7 3670-RA	Heat shock protein Hsp90	89.1	protein folding/ATP binding	√	y	y
cgd7 400-RA	Uncharacterized protein	38.6	No Data	√	y	y
cgd7 4310-RA	Cysteine-rich secretory protein. Allergen V5/Tpx-1-related	185	No Data	√	y	y
cgd7 4450-RA	Elongation factor EF1-gamma (Glutathione S-transferase family)	43.1	translational elongation/transferase activity	√	y	y
cgd7 480-RA	L-lactate/malate dehydrogenase	33.9	carbohydrate metabolic process/oxidoreductase activity	√	y	y
cgd7 910-RA	Phosphoglycerate kinase	42	glycolytic process/phosphoglycerate kinase activity	√	y	y
cgd8 1720-RA	Aldehyde/Alcohol dehydrogenase	89.7	alcohol dehydrogenase (NAD+) activity	√	y	y
cgd8 2930-RA	Gtpase translation elongation factor 2	92.7	GTPase activity	√	y	y
cgd1 2040-RA	Pyruvate kinase	56.4	glycolytic process/pyruvate kinase activity	√	y	n
cgd1 660-RA	Signal peptide region containing protein	37.1	No Data	√	y	n
cgd4 2300-RA	Ubiquitin-activating enzyme E1	120	cellular protein modification process/ubiquitin-like modifier activating enzyme activity	√	y	n
cgd7 2280-RA	Ribosomal protein L40e	14.7	translation/ribosome/structural constituent of ribosome	√	y	n
cgd7 4270-RA	2,3-bisphosphoglycerate-dependent phosphoglycerate mutase	28.3	glycolytic process/phosphoglycerate mutase activity	√	y	n
cgd1 2860-RA	UbiE/COQ5 methyltransferase	32.4	methylation/methyltransferase activity	√	n	y

(Continued)

TABLE 1 Continued

Protein ID (CryptoDB)	Gene product (CryptoDB)	MW (kDa)	GO terms (CryptoDB) - Presumptive function and/or localization	EVs DB [1]	LEVs	SEVs
cgd1 3690-RA	Aspartyl (Acid) protease	88.4	proteolysis/integral component of membrane/aspartic-type endopeptidase activity	√	n	y
cgd2 3780-RA	Uncharacterized protein	58.9	No Data	√	n	y
cgd2 4120-RA	Peptidyl-prolyl cis-trans isomerase	18.5	protein folding/peptidyl-prolyl cis-trans isomerase activity	√	n	y
cgd2 860-RA	Proteasome subunit beta type	22.9	proteolysis involved in cellular protein catabolic process/proteasome core complex/threonine-type endopeptidase activity	√	n	y
cgd5 1650-RA	DJ-1/Pfp1	19.6	No Data	√	n	y
cgd5 3230-RA	Manganese/iron superoxide dismutase	25.5	superoxide metabolic process/superoxide dismutase activity	√	n	y
cgd5 440-RA	Adenylate cyclase-associated CAP	19	cytoskeleton organization/actin binding	√	n	y
cgd6 1630-RA	CS domain containing protein	21.2	No Data	√	n	y
cgd6 3180-RA	40S ribosomal protein S15	16.4	translation/ribosome/small ribosomal subunit/structural constituent of ribosome	√	n	y
cgd6 3970-RA	Glutaredoxin-like protein 2 thioredoxin folds	24.7	protein disulfide oxidoreductase activity/iron-sulfur cluster binding	√	n	y
cgd6 4320-RA	40S ribosomal protein S5	21.8	translation/small ribosomal subunit/structural constituent of ribosome	√	n	y
cgd7 220-RA	GTP-binding nuclear protein	24.1	nucleocytoplasmic transport/nucleus/GTPase activity	√	n	y
cgd7 3120-RA	Thiamine pyrophosphate enzyme	64.4	carboxy-lyase activity/thiamine pyrophosphate binding	√	n	y
cgd7 360-RA	Heat shock protein 70	71.8	endoplasmic reticulum/ATP binding	√	n	y
cgd8 2110-RA	MIR motif-containing 39-like glycosyltransferase	25.4	membrane	√	n	y

[1] Presence of related proteins in Vesiclepedia (<http://microvesicles.org>) or ExoCarta (<http://exocarta.org>): √

Proteins in the light blue background were found both in LEVs and SEVs, proteins in yellow background were found only in LEVs, and proteins in green background only in SEVs.

(Supplementary Figure S3) related to carbohydrate metabolism. Therefore, the above-reported interaction data highlighted the possible existence of functional macromolecular complexes in the *C. parvum* EVs involved in specific biological processes, as evidenced by the coherence with the most represented predicted functional categories (Figure 11A).

The occurrence of protein homologs assigned to EVs in other organisms was verified for 48 out of the 60 species identified in this study (Table 1, results from comparison with data reported in

Vesiclepedia and ExoCarta database). Accordingly, this investigation confirmed that proteins generally active within the *C. parvum* cell's interior environment can also be detected in microvesicles or exosome-like vesicles. On the other hand, this proteomic study originally identified 12 proteins never assigned to EVs so far, among which all the ones (4 in number) here predicted being membrane components (Supplementary Table S2). An *in-silico* prediction of the schematic structure of these 12 proteins is shown in Figure 12. The occurrence of a signal peptide was

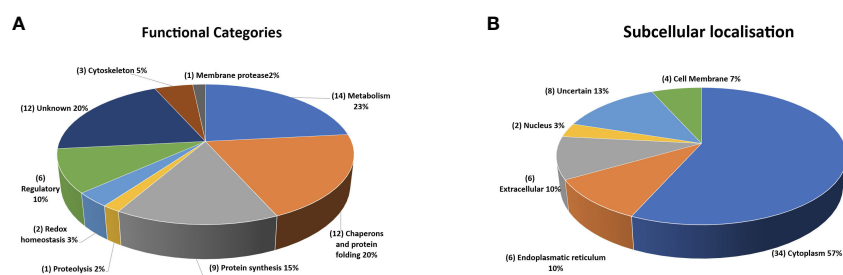


FIGURE 11

Quantitative representation of the different categories of the proteins identified in the extracellular vesicles. (A) graphic of the EVs proteins distributed on the basis of their presumptive functions. The classification was based on the sequence homologies with characterized proteins. (B) graphic of the EVs proteins distributed based on their presumptive sub-cellular localization. Prediction was made with DeepLoc-1.0 (<http://www.cbs.dtu.dk/services/DeepLoc/>).

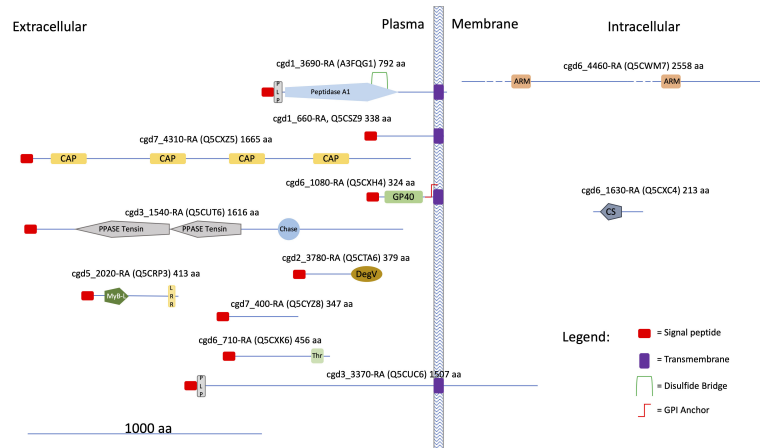


FIGURE 12

Cartoon showing some structural features of the *Cryptosporidium*-characteristic proteins (see text). UniProtKB accessions are reported in brackets. Proteins were divided into three categories according to the presence of hydrophobic motifs (*i. e.* presence/absence of a signal peptide and/or a transmembrane domain) and their presumptive localization respect to the cell membrane. Prediction of signal peptides and transmembrane domains was performed at Phobius (<https://phobius.sbc.su.se/index.html>). Prediction of other structural and functional domains was performed at Pfam (<http://pfam.xfam.org>) and Prosite (<https://prosite.expasy.org>). List of domains in the figure: Peptidase 1, PEPTIDASE_A1, PS51767; PLP, PROKAR_LIPOPROTEIN, PS51257; CAP, Cysteine-rich secretory protein family, CL0659; GP60, Glycoprotein GP60 of *Cryptosporidium*, PF11025; PPASE Tensin, PPASE_TENSIN, PS51181; Chase, CHASE, PS50839; DegV, DEGV, PS51482; MyB-L, MYB_LIKE, PS50090; LRR, Leucin Rich Repeat, LRR, PS51450; Thr, Threonin Rich Region, THR_RICH, PS50325; ARM, Armadillo/plakoglobin ARM repeat, ARM_REPEAT, PS50176; CS, PS51203.

evidenced in 10 proteins, among which 4 also contained a transmembrane domain, thus suggesting an extracellular/membrane localization for these components; the remaining 2 proteins did not contain localization motifs, as typical of cytoplasmic/luminal proteins. These 12 proteins included: i) three large molecules, such as the cysteine-rich secretory protein (cgd7_4310-RA-p1) including repeated CAP domains related to secretory proteins of metazoans (Gibbs et al., 2008) and allergen V5/Tpx-1-related (cgd5_2020_RA-p1); ii) a protein (cgd6_1630_RA) containing a CS domain, which is a binding module for HSP90, possibly involved in recruiting HSPs to multiprotein assembly (Lee et al., 2004); iii) membrane-linked aspartyl-protease (cgd1_3690-RA-p1) that was detected only in the SEVs proteome. Additional proteins were uncharacterized proteins (cgd1_660-RA, cgd2_3780-RA, cgd3_1540-RA, cgd3_3370-RA, cgd6_1080-RA, cgd6_4460-RA, cgd6_710-RA, cgd7_400-RA) that do not show similarity with already known protein families. This group of *Cryptosporidium*-specific proteins also included the glycoprotein GP60 (cgd6_1080-RA-p1), which is a well-known immunodominant antigen of the parasite (Wanyiri et al., 2007), here detected in both types of EVs.

4 Discussion

The excystation in *Cryptosporidium* spp. represents the beginning of a new infectious cycle and implies the release of intact vesicles from sporozoites. It has been previously demonstrated that micronemes and dense granules excrete the most of their soluble contents in a couple of hours after the excystation in the external medium (Chen et al., 2004). We here show that *C. parvum* sporozoites also release extracellular vesicles

and that, according to their appearance in microscopy experiments, can be distinguished in large and small types, here named LEVs and SEVs.

Once the excystation starts, the release of EVs proceeds autonomously without any additional requirements, such as host factors, and can be readily achieved also *in vitro*. On this basis, differential centrifugation of the excystation medium resolved *C. parvum* EVs in two sediments that, based on their features, were related to LEVs and SEVs, respectively. Dedicated NTA experiments definitively demonstrated that these vesicles have a different size and, accordingly, can be distinguished into LEVs of approximately 180 nm and SEVs of approximately 105 nm. Furthermore, these vesicles are partially different for protein composition as initially shown by Western blotting analysis, which demonstrated the presence of CpRom1 and CpGRASP exclusively in LEVs, as well as by fluorescent labelling combined with SDS-PAGE analysis that revealed distinct protein banding. This partial difference was finally verified by dedicated proteomic experiments that traced some proteins only in one of the two sediments; in particular, 39 proteins were in common between two vesicle types, while 5 and 16 proteins were identified only in LEVs and SEVs, respectively.

The finding of *C. parvum* EVs reported in the present study was fortuitous, and it was the consequence of our investigation on CpRom1 rhomboid, which belongs to a peculiar family of serine proteases integrally embedded in the plasma membrane. Apicomplexa have different types of rhomboids that act cleaving specific membrane proteins in a sequential manner; some of these molecules have fundamental roles in the motility of the parasite, and in its penetration capacity into the host cell (Dowse et al., 2008; Rugarabamu et al., 2015). At present, the specific role of CpRom1 in sporozoite invasion of enterocytes is still unclear. Nevertheless, this

study confirmed that mature CpRom1 is the largest rhomboid described so far, with a measured mass of 110 kDa. The two-dimensional model of this protein predicted a distinctive feature, with a large N-terminal hydrophilic portion extending outward from the plasma membrane (Figure 2). Consistent with this model, the gold particles used in immune electron microscopy experiments labelled the external membrane of LEVs (Figure 4B). These results were obtained using antibodies targeting the ID2 antigen (Trasarti et al., 2007), which is part of the above-reported N-terminal region exposed on the external surface of the membrane (Figure 2). It is worth noting that, except for those with mitochondrial localization (PARLs), all the rhomboids described so far are associated with the external side of cell membrane (Kandel and Neal, 2020). Therefore, it is reasonable that membrane protein such as CpRom1 can be released with budding vesicles from the external membrane of sporozoite. In this context, this study is original since it demonstrates for the first time the association of a rhomboid with extracellular vesicles.

To determine the subcellular origin of the sporozoite EVs, we sought to trace proteins that are undoubtedly involved in vesicular trafficking within the cell. Among these proteins, we observed that the GRASPs from *Cryptosporidium* spp. are strictly related to other members of this protein family. Indeed, immunoblotting experiments demonstrated that CpGRASP, a member of the conserved Golgi-associated protein family, is present on LEVs and not on SEVs, similarly to CpRom1. Golgi reassembly stacking protein family are tethered to the external membrane of Golgi vesicles, forming the Golgi stack network that coordinates the sorting of secreted proteins (Rabouille and Linstedt, 2016). In addition, GRASPs regulate the unconventional secretion of proteins directed toward the cell membrane, tagging vesicles originating directly from the ER through a Golgi-independent pathway (Ahat et al., 2019). Therefore, the exclusive presence of CpGRASP on LEVs suggests that the biogenesis of these vesicles is associated with the ER- and/or the Golgi-mediated pathways.

TEM and SEM micrographs clearly showed the generation of EVs budding from the external membrane of sporozoites (Figure 7). Budding from the plasma membrane is the most common mechanism for the generation of EVs, except for exosomes. Among other things, a specific difference between budding-generated EVs (or ectosomes) and exomes is their size, which ranges from 100 to 1000 nm for the ectosomes and from 30 to 150 nm for the exosomes (Meldolesi, 2018). Indeed, the newly formed vesicles as shown in Figures 7B, D were larger than 150 nm, in agreement with what expected for vesicles generated through the budding process. Therefore, we can conclude that outward budding of *C. parvum* sporozoite membrane is responsible for the generation of LEVs.

Tentatively determining the origin of smaller SEVs was more challenging, as these vesicles were observed only after their release into the excystation medium. Since SEVs share some physical parameters with exosomes, such as density (ranging from 1.08 to 1.2 g/ml) and size (ranging from 50 to 160 nm), it was reasonable to consider SEVs as exosome-like vesicles. Exosomes are generally distinguished from other vesicles for their origin within the endosomal pathway through the formation of MVBs; upon fusion

with the plasma membrane, these intracellular bodies release exosomes outside the cell (Doyle and Wang, 2019). On the other hand, no homologs of the most common proteins associated with exosomes, e.g. tetraspanins, were identified neither in the translated products of the *Cryptosporidium* genome (data not shown) nor in the proteome of this parasite (Snelling et al., 2007) and its different EVs (this study). Furthermore, Apicomplexa lack for the ESCRT machinery involved in MVB biogenesis, except for the ESCRTIII complex, which includes the VPS4 gene (Woo et al., 2015). Indeed, the heterologous expression of the PfVPS4 gene in *T. gondii*, which is the VPS4 homolog in *P. falciparum*, leads to the formation of a MVB-like structure (Yang et al., 2004). In *C. parvum*, the *cgd1_3390-RA* gene is the homologous of VPS4 and is transcribed in the sporozoite stage (data not shown). Overall, these data indicate that *C. parvum*, as well as other apicomplexan parasites, may generate MVB-like structure.

After assuming the existence of organelles like MVBs in sporozoites, we accurately examined the corresponding TEM micrographs finally identifying novel cytoplasmic structures that highly resemble MVBs; accordingly, we here defined them MVB-like organelles. Analogously to MVBs, MVB-like organelles are made of a large globular vesicle enclosed by a lipid membrane, which in turn contains various smaller vesicles (Figure 8). These novel organelles occur in proximity of the sporozoite membrane. However, since MVBs of proven endosomal origin have not yet been described in *Cryptosporidium* spp., our assimilation of SEVs to exosomes remains speculative. Further, no hypothesis on MVB biogenesis in *Cryptosporidium* can be formulated without dedicated investigations on the corresponding molecular machineries.

Integrated Western blotting, fluorescent labelling and proteomics experiments showed that *C. parvum* LEVs and SEVs also differ in protein composition. Out of the 60 proteins assigned with proteomics, 5 and 16 components were unique to LEVs and SEVs, respectively, while 39 were common in two types of vesicles. In addition, Western blotting experiments demonstrated that CpRom1 and CpGRASP selectively occur in LEVs. Based on a dedicated analysis for presumptive cellular localization, most (35 out of 60) of these vesicle proteins were predicted to occur in the cell cytoplasm. Various types of cytoplasmic proteins have already been described in extracellular vesicles (Gurung et al., 2021), even if their function in these particles is not yet clear. Nevertheless, it is conceivable that some cytoplasmic proteins are dragged from the cytoplasm during the formation of the emerging vesicles. On the other hand, 6 vesicle proteins here identified show a consensus sequence for the endoplasmic reticulum (ER), while other 6 ones contain a signal peptide, suggesting their sorting towards EVs through specific ER- and/or Golgi-mediated secretory pathways.

Based on gene ontology information, most (48 out of 60) of the proteins here identified were tentatively assigned to known functional categories, while 12 ones were considered peculiar of *Cryptosporidium* spp. Among the former group, the largest number of annotated molecules included enzymes related to cellular metabolism and components involved in protein folding and biosynthesis. Bioinformatic analysis of the corresponding protein interactions revealed the existence of a single network connecting most (51 out of 60) of the assigned molecular entries, suggesting the

existence of unique functional machinery interconnecting different processes. Regarding the remaining 12 *Cryptosporidium*-specific vesicle proteins, 11 have never been described so far. Figure 12 outlines some of the molecular features of these *Cryptosporidium*-specific proteins, including their presumptive localization with respect to plasma membrane, which is based on the presence of a signal peptide and transmembrane or other specific domains. Noteworthy, 10 of these proteins show a signal peptide, suggesting that reach the vesicle through a secretive pathway, while 4 of them, such as GP60, have a transmembrane domain essential for their exposure on the surface of EVs.

Among these proteins, the aspartyl-protease homologous (cgd1_3690-RA), which has been identified in this study only in the SEVs proteome and we have called membrane aspartyl protease (CpMAP), could be involved in sensitivity to Indinavir. In fact, the aspartyl-protease inhibitor Indinavir was previously shown reducing parasite proliferation both *in vitro* and *in vivo* when administered in the early phase of infection (Mele et al., 2003). This study demonstrates that CpMAP is expressed in sporozoites and conveyed by vesicles outside the sporozoites, thus possibly playing a role in the proteolysis of one or more host proteins.

On the other hand, the glycoprotein GP60 (cgd6_1080-RA), which was here detected in LEVs and SEVs, is one of the most studied protein of this parasite and has been already mentioned in several studies (Sestak et al., 2002; O'Connor et al., 2007; Wanyiri et al., 2007). This glycoprotein, also referred to as GP40/15, is one of the most relevant antigens of the parasite, which may determine an immunodominant response in the host (Sestak et al., 2002). It occurs exclusively in the *Cryptosporidium* genus and has no homologs even in other apicomplexans. This protein is synthesized as a large precursor of 60 kDa (GP60), which may undergo a proteolytic cleavage by a furin-like protease to generate a soluble fragment of approximately 40 kDa (GP40) and a smaller membrane-anchored segment of 15 kDa (GP15) (Wanyiri et al., 2007). Despite its nature of membrane protein, GP15 is released during the sporozoite gliding (O'Connor et al., 2007). It is remarkable that this fact is in perfect accordance with the discharge of EVs after the excystation.

Extracellular vesicles constitute important elements of the host-parasite interaction, and mediate cell-to-cell communication in different directions: between the parasite and its host, among the parasites, and among the host cells in response to the parasitic infection (Wu et al., 2019). In most of the cases, parasite-generated vesicles modulate the host immune response by transferring parasite molecules (*i.e.* mRNA, various types of non-coding RNA, DNA and proteins) that act on host cells like macrophages (Olajide and Cai, 2020).

In apicomplexan parasites, extracellular vesicles were studied in *Plasmodium* spp. and *Toxoplasma gondii*. In *Plasmodium* spp. host-generated exosomes have been described containing parasite proteins. In *Plasmodium yoelii*, these exosomes inoculated in mice can elicit an IgG response and a protective immunity (Martin-Jaular et al., 2011). In *Plasmodium falciparum*, host-generated exosomes can also coordinate gametocytogenesis among infected red blood cells by delivering parasitic DNA (Regev-Rudzki et al., 2013). Importantly, microvesicles induced by *Plasmodium* spp.

contribute to the onset of inflammatory symptoms of malaria. In *P. falciparum*, the number of extracellular vesicles excreted by blood cells increases in cerebral malaria (Pankoui Mfonkeu et al., 2010; Sahu et al., 2013), and a high number of them correlates with high fever in *Plasmodium vivax* infection (Campos et al., 2010). Host-generated extracellular vesicles are induced also by *T. gondii* in infected fibroblasts (Pope and Lässer, 2013), and the parasitic antigens in microvesicles stimulate dendritic cells leading to a Th1 protective response (Długońska and Gatkowska, 2016). It was also demonstrated that *T. gondii* generates its own exosomes and extracellular vesicles (Wowk et al., 2017).

With this study, we have added novel information in the complex scenario of extracellular vesicles secreted by apicomplexan parasites. We discovered that also *C. parvum* excysted sporozoites release EVs. Based on their size, these extracellular vesicles were resolved in LEVs and SEVs. Integrated approaches allowed defining common and peculiar characteristics of both vesicle typologies. CpRom1 and CpGRASP were selectively identified in LEVs, and thus can be considered markers of this vesicle type. Conversely, the abundant antigenic glycoprotein GP60 was detected in both type of vesicles; this fact may play a role in directing the host's immune response. On the other hand, EVs can form a sort of "smokescreen" for the host's antibodies, considering that each sporozoite can release multiple vesicles. These latter hypotheses promote further studies to decipher the specific function of these extracellular vesicles and their relationship with *C. parvum* infection.

Data availability statement

The original contributions presented in the study are included in the article/Supplementary Material, further inquiries can be directed to the corresponding author.

Ethics statement

The animal study was approved by National Institute of Health (ISS), Rome, Italy. The study was conducted in accordance with the local legislation and institutional requirements.

Author contributions

LB: Conceptualization, Investigation, Methodology, Writing – original draft, Writing – review & editing. ZB: Conceptualization, Investigation, Methodology, Writing – original draft, Writing – review & editing. AS: Conceptualization, Investigation, Methodology, Writing – original draft, Writing – review & editing. IV: Investigation, Methodology, Writing – original draft, Writing – review & editing. IP: Investigation, Writing – original draft, Writing – review & editing. EN: Investigation, Methodology, Writing – original draft, Writing – review & editing. AS: Conceptualization, Data curation, Formal analysis, Funding acquisition, Writing – original draft, Writing – review & editing. MhS: Conceptualization, Data

curation, Writing – original draft, Writing – review & editing. MgS: Conceptualization, Data curation, Methodology, Writing – original draft, Writing – review & editing. MF: Conceptualization, Investigation, Methodology, Supervision, Writing – original draft, Writing – review & editing. FT: Conceptualization, Formal analysis, Investigation, Methodology, Resources, Supervision, Writing – original draft, Writing – review & editing.

Funding

The author(s) declare financial support was received for the research, authorship, and/or publication of this article. This work was supported by grants from the National Recovery and Resilience Plan, mission 4, component 2, investment 1.3, MUR call n. 341/2022 funded by the European Union-NextGenerationEU for the project “One Health Basic and Translational Research Actions addressing Unmet Needs on Emerging Infectious Diseases (IN-FACT)”, D.C. 1554/2022, PE00000007. The costs of publication have been paid by Department of Infectious Diseases, Istituto Superiore di Sanità.

Acknowledgments

We thank the Core Facilities of Istituto Superiore di Sanità, in particular Federica Fratini that performed NTA analysis. We are

References

- Ahat, E., Li, J., and Wang, Y. (2019). New insights into the golgi stacking proteins. *Front. Cell. Dev. Biol.* 7. doi: 10.3389/fcell.2019.00131
- Allison, G. M., Rogers, K. A., Borad, A., Ahmed, S., Karim, M. M., Kane, A. V., et al. (2011). Antibody responses to the immunodominant *Cryptosporidium* gp15 antigen and gp15 polymorphisms in a case-control study of cryptosporidiosis in children in Bangladesh. *Am. J. Trop. Med. Hyg.* 85, 97–104. doi: 10.4269/ajtmh.2011.11-0043
- Barrea, V., Boussadia, Z., Polignano, D., Galli, L., Tirelli, V., Sanchez, M., et al. (2023). Metabolic labelling of a subpopulation of small extracellular vesicles using a fluorescent palmitic acid analogue. *J. Extracell. Vesicles*, e12392. doi: 10.1002/jev2.12392
- Bouzid, M., Hunter, P. R., Chalmers, R. M., and Tyler, K. M. (2013). *Cryptosporidium* pathogenicity and virulence. *Clin. Microbiol. Rev.* 26, 115–134. doi: 10.1128/CMR.00076-12
- Campos, F. M., Franklin, B. S., Teixeira-Carvalho, A., Filho, A. L., de Paula, S. C., Fontes, C. J., et al. (2010). Augmented plasma microparticles during acute *Plasmodium vivax* infection. *Malar. J.* 9, 327. doi: 10.1186/1475-2875-9-327
- Carruthers, V. B., and Blackman, M. J. (2005). A new release on life: emerging concepts in proteolysis and parasite invasion. *Mol. Microbiol.* 55, 1617–1630. doi: 10.1111/j.1365-2958.2005.04483.x
- Checkley, W., White, A. C. Jr., Jaganath, D., Arrowood, M. J., Chalmers, R. M., Chen, X. M., et al. (2015). A review of the global burden, novel diagnostics, therapeutics, and vaccine targets for cryptosporidium. *Lancet Infect. Dis.* 15, 85–94. doi: 10.1016/S1473-3099(14)70772-8
- Chen, X. M., O'Hara, S. P., Huang, B. Q., Nelson, J. B., Lin, J. J., Zhu, G., et al. (2004). Apical organelle discharge by *Cryptosporidium parvum* is temperature, cytoskeleton, and intracellular calcium dependent and required for host cell invasion. *Infect. Immun.* 72, 6806–6816. doi: 10.1128/IAI.72.12.6806-6816.2004
- Chua, C. E., Lim, Y. S., Lee, M. G., and Tang, B. L. (2012). Non-classical membrane trafficking processes galore. *J. Cell. Physiol.* 227, 3722–3730. doi: 10.1002/jcp.24082
- Coscia, C., Parolini, I., Sanchez, M., Biffoni, M., Boussadia, Z., Zanetti, C., et al. (2016). Generation, quantification, and tracing of metabolically labeled fluorescent exosomes. *Methods Mol. Biol.* 1448, 217–235. doi: 10.1007/978-1-4939-3753-0_16
- Dehghani, M., and Gaborski, T. R. (2020). Fluorescent labeling of extracellular vesicles. *Methods Enzymol.* 645, 15–42. doi: 10.1016/bs.mie.2020.09.002
- Długońska, H., and Gatkowska, J. (2016). Exosomes in the context of *Toxoplasma gondii* – host communication. *Ann. Parasitol.* 62, 169–174. doi: 10.17420/ap6203.50
- Dowse, T. J., Koussis, K., Blackman, M. J., and Soldati-Favre, D. (2008). Roles of proteases during invasion and egress by *Plasmodium* and *Toxoplasma*. *Subcell. Biochem.* 47, 121–139. doi: 10.1007/978-0-387-78267-6_10
- Dowse, T. J., and Soldati, D. (2005). Rhomboid-like proteins in Apicomplexa: phylogeny and nomenclature. *Trends. Parasitol.* 21, 254–258. doi: 10.1016/j.pt.2005.04.009
- Doyle, L. M., and Wang, M. Z. (2019). Overview of extracellular vesicles, their origin, composition, purpose, and methods for exosome isolation and analysis. *Cells* 8, 727. doi: 10.3390/cells8070727
- Fayer, R., and Xiao, L. (2007). *Cryptosporidium and cryptosporidiosis* (Boca Raton: CRC Press). doi: 10.1201/9781420052275
- Feng, Y., Ryan, U. M., and Xiao, L. (2018). Genetic diversity and population structure of *Cryptosporidium*. *Trends. Parasitol.* 34, 997–1011. doi: 10.1016/j.pt.2018.07.009
- Gibbs, G. M., Roelants, K., and O'Bryan, M. K. (2008). The CAP superfamily: cysteine-rich secretory proteins, antigen 5, and pathogenesis-related 1 proteins—roles in reproduction, cancer, and immune defense. *Endocr. Rev.* 29, 865–897. doi: 10.1210/er.2008-0032
- Guérin, A., Strelau, K. M., Barylyuk, K., Wallbank, B. A., Berry, L., Crook, O. M., et al. (2023). *Cryptosporidium* uses multiple distinct secretory organelles to interact with and modify its host cell. *Cell. Host. Microbe* 31, 650–664.e6. doi: 10.1016/j.chom.2023.03.001
- Gurung, S., Perocheau, D., Touramanidou, L., and Baruteau, J. (2021). The exosome journey: from biogenesis to uptake and intracellular signalling. *Cell. Commun. Signal.* 19, 47. doi: 10.1186/s12964-021-00730-1
- Kandel, R. R., and Neal, S. E. (2020). The role of rhomboid superfamily members in protein homeostasis: Mechanistic insight and physiological implications. *Biochim. Biophys. Acta Mol. Cell. Res.* 1867, 118793. doi: 10.1016/j.bbamcr.2020.118793
- Kotloff, K. L., Nataro, J. P., Blackwelder, W. C., Nasrin, D., Farag, T. H., Panchalingam, S., et al. (2013). Burden and aetiology of diarrhoeal disease in infants and young children in developing countries (the Global Enteric Multicenter Study, GEMS): a prospective, case-control study. *Lancet* 382, 209–222. doi: 10.1016/S0140-6736(13)60844-2

thankful to CryptoDB for making available all the genomic and transcriptomic data used in this study.

Conflict of interest

The authors declare that the research was conducted in the absence of any commercial or financial relationships that could be construed as a potential conflict of interest.

Publisher's note

All claims expressed in this article are solely those of the authors and do not necessarily represent those of their affiliated organizations, or those of the publisher, the editors and the reviewers. Any product that may be evaluated in this article, or claim that may be made by its manufacturer, is not guaranteed or endorsed by the publisher.

Supplementary material

The Supplementary Material for this article can be found online at: <https://www.frontiersin.org/articles/10.3389/fcimb.2024.1367359/full#supplementary-material>

- Kühnle, N., Dederer, V., and Lemberg, M. K. (2019). Intramembrane proteolysis at a glance: from signalling to protein degradation. *J. Cell. Sci.* 132, jcs217745. doi: 10.1242/jcs.217745
- Lee, Y. T., Jacob, J., Michowski, W., Nowotny, M., Kuznicki, J., and Chazin, W. J. (2004). Human Sgt1 binds HSP90 through the CHORD-Sgt1 domain and not the tetratricopeptide repeat domain. *J. Biol. Chem.* 279, 16511–16517. doi: 10.1074/jbc.M400215200
- MacKenzie, W. R., Hoxie, N. J., Proctor, M. E., Gradus, M. S., Blair, K. A., Peterson, D. E., et al. (1994). A massive outbreak of *Cryptosporidium* infection transmitted through the public water supply. *N. Engl. J. Med.* 331, 161–167. doi: 10.1056/NEJM199407213310304
- Martin-Jaular, L., Nakayasu, E. S., Ferrer, M., Almeida, I. C., and Del Portillo, H. A. (2011). Exosomes from *Plasmodium yoelii*-infected reticulocytes protect mice from lethal infections. *PLoS One* 6, e26588. doi: 10.1371/journal.pone.0026588
- Meldolesi, J. (2018). Exosomes and ectosomes in intercellular communication. *Curr. Biol.* 28, R435–R444. doi: 10.1016/j.cub.2018.01.059
- Mele, R., Gomez Morales, M. A., Tosini, F., and Pozio, E. (2003). Indinavir reduces *Cryptosporidium parvum* infection in both *in vitro* and *in vivo* models. *Int. J. Parasitol.* 33, 757–764. doi: 10.1016/S0020-7519(03)00093-6
- O'Connor, R. M., Wanyiri, J. W., Cevallos, A. M., Priest, J. W., and Ward, H. D. (2007). *Cryptosporidium parvum* glycoprotein gp40 localizes to the sporozoite surface by association with gp15. *Mol. Biochem. Parasitol.* 156, 80–83. doi: 10.1016/j.molbiopara.2007.07.010
- Olajide, J. S., and Cai, J. (2020). Perils and promises of pathogenic protozoan extracellular vesicles. *Front. Cell. Infect. Microbiol.* 10. doi: 10.3389/fcimb.2020.00371
- Pankou, Mfonkeu, J. B., Gouado, I., Fotso Kuaté, H., Zambou, O., Amvam Zollo, P. H., Grau, G. E., et al. (2010). Elevated cell-specific microparticles are a biological marker for cerebral dysfunctions in human severe malaria. *PLoS One* 5, e13415. doi: 10.1371/journal.pone.0013415
- Peres da Silva, R., Martins, S. T., Rizzo, J., Dos Reis, F. C. G., Joffe, L. S., Vainstein, M., et al. (2018). Golgi reassembly and stacking protein (GRASP) participates in vesicle-mediated RNA export in *cryptococcus neoformans*. *Genes (Basel)*. 9, 400. doi: 10.3390/genes9080400
- Perry, M. M., and Gilbert, A. B. (1979). Yolk transport in the ovarian follicle of the hen (*Gallus domesticus*): lipoprotein-like particles at the periphery of the oocyte in the rapid growth phase. *J. Cell. Sci.* 39, 257–272. doi: 10.1242/jcs.39.1.257
- Pope, S. M., and Lässer, C. (2013). *Toxoplasma gondii* infection of fibroblasts causes the production of exosome-like vesicles containing a unique array of mRNA and miRNA transcripts compared to serum starvation. *J. Extracell. Vesicles*. 11, 2. doi: 10.3402/jev.v2i0.22484
- Rabouille, C., and Linstedt, A. D. (2016). GRASP: A multitasking tether. *Front. Cell. Dev. Biol.* 4. doi: 10.3389/fcell.2016.00001
- Regev-Rudzki, N., Wilson, D. W., Carvalho, T. G., Sisqueira, X., Coleman, B. M., Rug, M., et al. (2013). Cell-cell communication between malaria-infected red blood cells via exosome-like vesicles. *Cell* 153, 1120–1133. doi: 10.1016/j.cell.2013.04.029
- Rugarabamu, G., Marq, J. B., Guérin, A., Lebrun, M., and Soldati-Favre, D. (2015). Distinct contribution of *Toxoplasma gondii* rhomboid proteases 4 and 5 to micronemal protein protease 1 activity during invasion. *Mol. Microbiol.* 97, 244–262. doi: 10.1111/mmi.13021
- Sahu, U., Sahoo, P. K., Kar, S. K., Mohapatra, B. N., and Ranjit, M. (2013). Association of TNF level with production of circulating cellular microparticles during clinical manifestation of human cerebral malaria. *Hum. Immunol.* 74, 713–721. doi: 10.1016/j.humimm.2013.02.006
- Salzano, A. M., Novi, G., Arioli, S., Corona, S., Mora, D., and Scaloni, A. (2013). Mono-dimensional blue native-PAGE and bi-dimensional blue native/urea-PAGE or SDS-PAGE combined with nLC-ESI-LIT-MS/MS unveil membrane protein heteromeric and homomeric complexes in *Streptococcus thermophilus*. *J. Proteomics* 94, 240–261. doi: 10.1016/j.jprot.2013.09.007
- Sestak, K., Ward, L. A., Sheoran, A., Feng, X., Akiyoshi, D. E., Ward, H. D., et al. (2002). Variability among *Cryptosporidium parvum* genotype 1 and 2 immunodominant surface glycoproteins. *Parasite Immunol.* 24, 213–219. doi: 10.1046/j.1365-3024.2002.00455.x
- Shively, S., and Miller, W. R. (2009). The use of HMDS (hexamethyldisilazane) to replace critical point drying (CPD) in the preparation of tardigrades for SEM (Scanning electron microscope) imaging. *Trans. Kansas Acad. Science.* 112, 198–200. doi: 10.1660/062.112.0407
- Snelling, W. J., Lin, Q., Moore, J. E., Millar, B. C., Tosini, F., Pozio, E., et al. (2007). Proteomics analysis and protein expression during sporozoite excystation of *Cryptosporidium parvum* (Coccidia, Apicomplexa). *Mol. Cell. Proteomics* 6, 346–355. doi: 10.1074/mcp.M600372-MCP200
- Templeton, T. J., Lancto, C. A., Vigdorovich, V., Liu, C., London, N. R., Hadsall, K. Z., et al. (2004). The *Cryptosporidium* oocyst wall protein is a member of a multigene family and has a homolog in *Toxoplasma*. *Infect. Immun.* 72, 980–987. doi: 10.1128/IAI72.2.980-987.2004
- Théry, C., Clayton, A., Amigorena, S., and Raposo, G. (2006). Isolation and characterization of exosomes from cell culture supernatants and biological fluids. *Curr. Protoc. Cell Biol.*, 3.22.1–3.22.29. doi: 10.1002/0471143030.cb0322s30
- Théry, C., Witwer, K. W., Aikawa, E., Alcaraz, M. J., Anderson, J. D., Andriantsitohaina, R., et al. (2018). Minimal information for studies of extracellular vesicles 2018 (MISEV2018): a position statement of the International Society for Extracellular Vesicles and update of the MISEV2014 guidelines. *J. Extracell. Vesicles*. 7, 1535750. doi: 10.1080/20013078.2018.1535750
- Tosini, F., Ludovisi, A., Tonanzi, D., Amati, M., Cherchi, S., Pozio, E., et al. (2019). Delivery of SA35 and SA40 peptides in mice enhances humoral and cellular immune responses and confers protection against *Cryptosporidium parvum* infection. *Parasitol. Vectors*. 12, 233. doi: 10.1186/s13071-019-3486-8
- Trasarti, E., Pizzi, E., Pozio, E., and Tosini, F. (2007). The immunological selection of recombinant peptides from *Cryptosporidium parvum* reveals 14 proteins expressed at the sporozoite stage, 7 of which are conserved in other apicomplexa. *Mol. Biochem. Parasitol.* 152, 159–169. doi: 10.1016/j.molbiopara.2006.12.010
- Van Niel, G., D'Angelo, G., and Raposo, G. (2018). Shedding light on the cell biology of extracellular vesicles. *Nat. Rev. Mol. Cell. Biol.* 19, 213–228. doi: 10.1038/nrm.2017.125
- Wang, X., Chen, J., and Zheng, J. (2022). The state of the art of extracellular vesicle research in protozoan infection. *Front. Genet.* 13. doi: 10.3389/fgene.2022.941561
- Wanyiri, J. W., O'Connor, R., Allison, G., Kim, K., Kane, A., Qiu, J., et al. (2007). Proteolytic processing of the *Cryptosporidium* glycoprotein gp40/15 by human furin and by a parasite-derived furin-like protease activity. *Infect. Immun.* 75, 184–192. doi: 10.1128/IAI.00944-06
- Woo, Y. H., Ansari, H., Otto, T. D., Klinger, C. M., Kolisko, M., Michálek, J., et al. (2015). Chromerid genomes reveal the evolutionary path from photosynthetic algae to obligate intracellular parasites. *Elife* 4, e06974. doi: 10.7554/eLife.06974.033
- Wowk, P. F., Zardo, M. L., Miot, H. T., Goldenberg, S., Carvalho, P. C., and Mörking, P. A. (2017). Proteomic profiling of extracellular vesicles secreted from *Toxoplasma gondii*. *Proteomics* 17, 15–16. doi: 10.1002/pmic.v17.15-16
- Wu, Z., Wang, L., Li, J., Wang, L., Wu, Z., and Sun, X. (2019). Extracellular vesicle-mediated communication within host-parasite interactions. *Front. Immunol.* 9. doi: 10.3389/fimmu.2018.03066
- Xiao, L., and Feng, Y. (2017). Molecular epidemiologic tools for waterborne pathogens *Cryptosporidium* spp. and *Giardia duodenalis*. *Food Waterborne Parasitol.* 8-9, 14–32. doi: 10.1016/j.fawpar.2017.09.002
- Yang, M., Coppens, I., Wormsley, S., Baevova, P., Hoppe, H. C., and Joiner, K. A. (2004). The *Plasmodium falciparum* Vps4 homolog mediates multivesicular body formation. *J. Cell Sci.* 117, 3831–3838. doi: 10.1242/jcs.01237