



## OPEN ACCESS

EDITED BY  
Feng Chen,  
Peking University, China

REVIEWED BY  
Tomoko Hanawa,  
Kyorin University, Japan  
Santosh K. Ghosh,  
Case Western Reserve University,  
United States

## \*CORRESPONDENCE

Xian Peng  
✉ pengx@scu.edu.cn

<sup>†</sup>These authors have contributed equally to this work and share first authorship

## SPECIALTY SECTION

This article was submitted to Extra-intestinal Microbiome, a section of the journal Frontiers in Cellular and Infection Microbiology

RECEIVED 09 November 2022

ACCEPTED 16 January 2023

PUBLISHED 01 February 2023

## CITATION

Lu Y, Li Z and Peng X (2023) Regulatory effects of oral microbe on intestinal microbiota and the illness.  
*Front. Cell. Infect. Microbiol.* 13:1093967.  
doi: 10.3389/fcimb.2023.1093967

## COPYRIGHT

© 2023 Lu, Li and Peng. This is an open-access article distributed under the terms of the [Creative Commons Attribution License \(CC BY\)](https://creativecommons.org/licenses/by/4.0/). The use, distribution or reproduction in other forums is permitted, provided the original author(s) and the copyright owner(s) are credited and that the original publication in this journal is cited, in accordance with accepted academic practice. No use, distribution or reproduction is permitted which does not comply with these terms.

# Regulatory effects of oral microbe on intestinal microbiota and the illness

Yanbei Lu<sup>†</sup>, Zhengyi Li<sup>†</sup> and Xian Peng<sup>\*</sup>

State Key Laboratory of Oral Diseases, National Clinical Research Center for Oral Diseases, Chengdu, Sichuan, China

Over the past decade, the association between oral health, intestinal microbiota, and systemic diseases has been further validated. Some oral microbial species have been isolated from pathological intestine mucosa or feces and identified as biomarkers for intestinal diseases. A small proportion of oral microbiome passes through or colonizes the lower gastrointestinal tract, even in healthy individuals. Opportunistic pathogens from the oral cavity may expand and participate in the occurrence and progression of intestinal diseases when the anatomical barrier is disrupted. These disruptors interact with the intestinal microbiota, disturbing indigenous microorganisms, and mucosal barriers through direct colonization, blood circulation, or derived metabolite pathways. While interacting with the host's immune system, oral-derived pathogens stimulate inflammation responses and guide the transition of the intestinal microenvironment from a healthy state to a pre-disease state. Therefore, the oral-gut microbiome axis sheds light on new clinical therapy options, and gastrointestinal tract ecology balance necessitates simultaneous consideration of both oral and gut microbiomes. This review summarizes possible routes of oral microbes entering the intestine and the effects of certain oral bacteria on intestinal microbiota and the host's immune responses.

## KEYWORDS

oral microbe, intestinal microbe, gut diseases, microbiota, immunity, oral-gut axis

## 1 Introduction

For human beings, the slow-flowing and weakly acidic colon dominate the largest, densest, and most diverse microbial community, with a capacity of up to 100 billion to one trillion cells per milliliter of intestinal contents, acting as a highly efficient bioreactor (Sender et al., 2016). Functional heterogeneity of each intestinal segment determines the diversity of microbial populations in different anatomical regions, and various intestinal microbiotas sustain intestinal physiological development and epithelial homeostasis. Thus, intestinal microbiota dysbiosis is deeply correlate with gut diseases such as irritable bowel syndrome (IBS), inflammatory bowel disease (IBD), colorectal cancer (CRC), and even systemic metabolism or inflammatory diseases (e.g., rheumatism, obesity, etc.) (Priya et al., 2022). Gut microbes-derived metabolite pathways disrupt intestinal homeostasis and proceed to

intestinal diseases *via* regulating the production of short-chain fatty acids (SCFAs) and trimethylamine, or distantly signal to parenteral organs and the immune system through releasing microbes or metabolites into the bloodstream (McPherson et al., 2021).

The oral and intestine are anatomically contiguous in the gastrointestinal (GI) tract, which provides chances for expanded oral pathobionts being ingested and translocated to the gut, suggesting the role of oral microbes in regulating intestinal microecology. However, many current studies separately focus on these two regions in an organ-specific manner without considering microbial translocation. The oral contains various microhabitats that are exposed or not exposed to the air. Tooth surfaces, tongue, mucous membrane, and gums are habitats of aerobic microbes whereas periodontal pockets mainly resident facultative anaerobic and anaerobic microbes, potentially act as complementary reservoirs for opportunistic enteric pathogens. However, the prerequisites for ectopic colonization of oral microbes are harsh. The majority of oral pathobionts are inactivated by gastric acidity, bile acid, colonization resistance of native microbiotas, and the immune system. As a validation, proton pump inhibitors (PPIs) users and achlorhydria patients exhibit an abnormal increase in gut colonization by oral pathobionts (Jackson et al., 2016). In recent years, experimental and sequencing research have successively revealed biological homologies between oral and intestinal flora, indicating the potential value of the oral-gut axis in precise diagnosis, effective treatment, and prognosis of gut diseases (Park et al., 2021; Bao et al., 2022). For instance, saliva could be used as a biomarker to investigate gastrointestinal status conveniently and non-invasively (Wang et al., 2021b).

Hundreds of proteins and peptides released by oral microbes could be metabolized into a variety of bioactive by-products, many of which are toxic (Barbour et al., 2022). Consequently, these metabolites possibly explain the ability that oral-to-gut microbial transmissions to shape or reshape the intestinal microbial ecosystem and eventually modulate the pathogenesis. In the intestine, oral microorganisms participate in various immunoactivity and inflammatory pathways. Saliva translocated mice intestine model shows altered cytokines, chemokines, and tight junction protein compositions, indicating the induced intestinal inflammation and enhanced mucosa permeability (Tsuzuno et al., 2021; Bao et al., 2022). The damaged intestinal mucosa increases antigen exposure, which indirectly activates immune cells and upregulates systemic inflammatory factors. In parallel, the ectopic oral pathobionts, rather than gut-resident microbes, activate the periodontist-induced Th17-skewed T cells that are imprinted with gut tropism (Kitamoto et al., 2020). Hence, regarding clinical therapy, oral microbes shall be considered synchronously and comprehensively with intestinal native microbes in designing treatment regimens.

It is not fully understood the exact oral microbes that influence gut microbiota and the mechanism of these intruders participating in intestinal diseases, further elucidations are still required. As the oral microbiome can exhibit a stable state of at least 3 months, and the gut microbiome for up to 5 years, the crosstalk between oral and intestinal microecology is pathological and clinically valuable (Faith et al., 2013; Wei et al., 2021). In this review, we highlighted the interconnections and translocation route between the oral cavity and the intestine, the immune-resistant strategy from the host, and the mechanism of the

oral microorganism interacting with the intestinal ecology to provide a reference for the research frontier concerning the impact of oral microbes on intestinal microbiota.

## 2 Pathways of oral microorganisms entering the intestine

### 2.1 Enteral route

Normal humans produce 0.75-1.5L saliva per day, which contains a considerable number of microbes. In mice experiments that establish oral microbial infection through oral administration or gavage of the saliva from periodontitis patients, an abnormal enrichment of oral pathobionts that were confirmed as secondary components of the salivary microbiota was detected in mice's intestines (Atarashi et al., 2017; Bao et al., 2022). For human beings, most oral species (including core Soral taxa, *Streptococcus*, *Veillonella*, *Actinomyces*, and *Haemophilus*) that result in endogenous infection emerged in the GI tract in health and disease status, with high levels of variation across individuals (Schmidt et al., 2019) (Figure 1).

#### 2.1.1 Duodenum

High-throughput DNA sequencing of oral, duodenal, and pancreatic samples reveals distinct strain-level clustering patterns for each anatomical region and microbiome overlaps between them (Barlow et al., 2021). This similarity is further extended in the context of GI diseases, and absolute loads of ectopic colonized microbes are positively correlate with more severe GI symptoms. Dyspepsia patients' duodenum components behave oral-like, including organisms from the HACEK group, *Klebsiella*, *Escherichia*, *Enterococcus*, and *Clostridium*, replace the ordinary strict anaerobes (Barlow et al., 2021; Chung et al., 2021). Moreover, automatically connected as the gate towards the pancreas, the oral bacterium in the duodenum may be capable of entering the pancreas. For instance, the periodontal microbes (*Porphyromonas gingivalis* and *Aggregatibacter actinomycetemcomitans*) have been proven positively related to pancreatic cancer risk (Fan et al., 2018; Nagata et al., 2022; Tan et al., 2022).

#### 2.1.2 Intestinal canal

The oral microflora owns the highest level of variation and the most diverse library of unique sequences, whereas this diversity gradually decreases from the oral to the distal gut, indicating that the microbiome undergoes selective pressure (Richardson et al., 2020). If successfully reaching the intestine, these intruders are usually pathogenic. In the intestine, oral-derived microbiotas create an inflammatory and immunosuppressive microenvironment suitable for tumorigenesis. It is detected the existence of oral-originated bacteria (*Fusobacterium nucleatum*, *P. gingivalis*, and *Parvimonas micra*) in CRC tissues, while butyrate-producing and anti-inflammatory microbes that originally lived in the intestine decreased correspondingly (Gao et al., 2021; Zhao et al., 2021). Ectopic oral microbes also participate in the pathogenic process of IBS and IBD (Liu et al., 2018; Baumgartner et al., 2021; Xia et al., 2021). Sequencing and endoscopies of IBS and ulcerative colitis (UC)

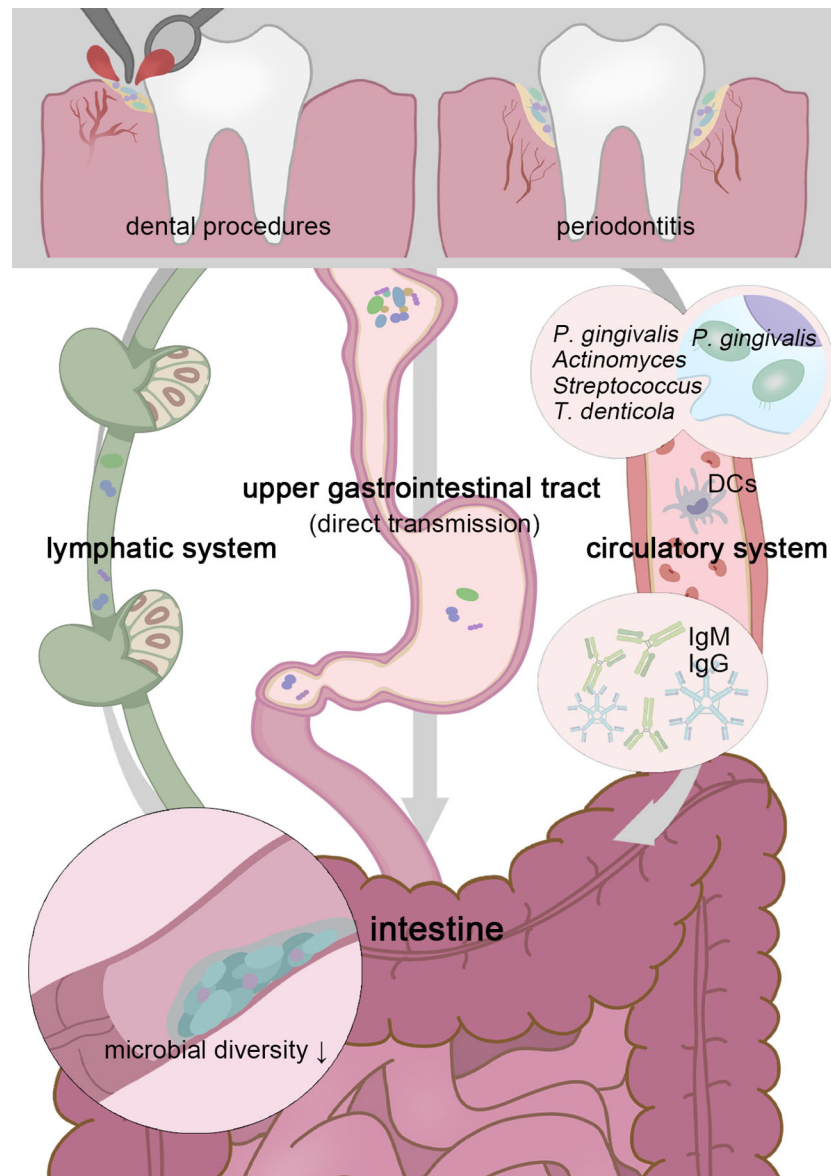


FIGURE 1

Transient physiological bacteremia triggered by periodontitis and dental procedures permits oral pathogens to stretch themselves systemically. Patients with periodontitis possess a less diverse gut microbiota, and higher possession of oral taxa in the intestine gives rise to more serious gut inflammation (Lourenvarsigmao et al., 2018). To tolerate the inactivation of stomach acid and bile acid, these unexpected “visitors” are expected to be highly acid-resistant. Moreover, *P. gingivalis* and *F. nucleatum* can be parasitic on dendritic cells or macrophages and disrupt extraoral tissues (Carrion et al., 2012; Xue et al., 2018). Oral microbes, including *P. gingivalis*, *Actinomyces*, *Streptococcus*, and *Treponema denticola*, have been confirmed as sources of non-oral organs in a colonizing manner (Figuero et al., 2014; Zhang et al., 2021; Deppe et al., 2022). Chronic oral infection establishes *F. nucleatum* colonization that significantly induces systemic humoral IgG and IgM antibody responses (Velsko et al., 2015).

patients’ intestines reveal a unique and characteristic ecological dysbiosis of dense bacterial biofilms and several biofilm-forming microbial species of dental plaques (Baumgartner et al., 2021; Xia et al., 2021). According to the sequencing of diseased full-thickness colon specimens including the neuromuscular region, the dominance of putative oral pathogens such as *Firmicutes* (*Streptococcus*, *Staphylococcus*, *Peptostreptococcus*) and *Fusobacteria* (*Fusobacterium*) potentially modulate colon motility (Dinakaran et al., 2018). Additionally, despite the shortage of research illustrating oral microbes colonizing in IBS patients’ intestines, the altered composition of oral microbes correlates with the severity of IBS (Fourie et al., 2016).

### 2.1.3 Accessory organs of the digestive tract

The liver is one of the most-affected organs by biological network fluctuations, and the gut-liver axis is crucial in linking intestinal microbes and extraintestinal organs (Albillos et al., 2020). There are two possible clues for the involvement of oral microbes in the liver-gut axis. During periodontitis, the liver is constantly exposed to pathogenic factors from the oral, periodontitis-related systemic hypo-inflammation and chemokine potentially affect hepatic metabolic pathways. Both fecal and salivary microbiota have independent prognostic value for cirrhosis progress, specifically, via impaired salivary defense (Yonezawa et al., 2021; Jia et al., 2022; Saboo et al., 2022). The subgingival microbiota of cirrhotic patients

consists of an uncommon bacterial community, indicating that its origin is from ecological dysregulation by immune system impairment (Jensen et al., 2018). Moreover, gut microbiota dysbiosis induced by the enteral translocation of periodontopathic bacteria weakens the mucous barrier, thus promoting the enterohepatic transfer of hepatotoxins and enterobacteria (Kuraji et al., 2021). *Via* disturbing intestinal metabolic and immune pathways, *Porphyromonas gingivalis* accelerates the progression of non-alcoholic fatty liver disease (NAFLD) (Albuquerque-Souza and Sahingur, 2022; Wang et al., 2022). Primary sclerosing cholangitis (PSC) with or without coexisting IBD is another typical manifestation of the altered gut-liver axis (Ruhlemann et al., 2019). Even in the early stages, PSC patients' stool and mucosa significantly enrich oral pathogenic bacteria such as *Streptococcus*, *Veillonella*, and *Actinomyces* (*Streptococcus salivarius* is an independent predictor of liver-related three-year mortality) (Ruhlemann et al., 2019; Jia et al., 2022).

## 2.2 Hematogenous route

Particularly for periodontitis and periapical inflammation patients, transient physiological bacteremia triggered by tooth extraction and periodontal procedures permits oral pathogens to stretch themselves systemically *via* the circulatory system (Olsen and Yamazaki, 2019) (Figure 1). For severe periodontitis, the subgingival plaque has direct access to the damaged periodontal pocket, bacteria are more likely to infiltrate periodontal blood vessels and gingival epithelium in the context of the increased mucosa permeability, through which, *P. gingivalis* and *F. nucleatum* can be parasitic on dendritic cells or macrophages and disrupt extraoral tissues (Carrion et al., 2012; Xue et al., 2018). It is widely acknowledged the linkage (not causation) between periodontal disease and atherosclerotic vascular disease. Oral microbes, including *P. gingivalis*, *Actinomyces*, *Streptococcus*, and *Treponema denticola*, have been confirmed as sources of infected heart valves, atherosclerotic plaques, and rheumatic heart valves (Figuro et al., 2014; Zhang et al., 2021; Deppe et al., 2022). In this way, pathogens and their metabolites may be disseminated to the intestine similarly. Periodontal patients possess a less diverse gut microbiota, and higher possession of oral taxa in the intestine, which gives rise to more serious gut inflammation (Lourenvarsigmao et al., 2018). A retrospective analysis of individuals' blood samples indicates that patients with *F. nucleatum* or *Streptococcus pepticus* bacteremia are more likely to suffer from subsequent colorectal cancer (Kwong et al., 2018). For clinical CRC diagnosis, plasma is more advantageous than stool in sensitivity and holds a more unique and heterogeneous microbial community, the vast majority of circulating bacterial DNA could retrospect to the gastrointestinal tract and the oral cavity (Xiao et al., 2021).

However, the accurate location of oral microbes and the probability of colonization in the distal intestine remain controversial. Precise amplicon sequence variants analysis accomplished by Armin Rashidi et al. excluded a significant distinction of microorganisms between oral and gut (66 healthy adults from two countries), indicating more clinical pathologic examinations are still required (Rashidi et al., 2021). Vasapolli et al.'s sequencing regarding healthy subjects' saliva,

mucosa, and stool samples from each segment of the GI tract displayed an approximate absence of major species of the upper GI tract in the lower GI tract (Vasapolli et al., 2019). Similarly, the correlation between oral taxa and pancreatic cancer did not present among an African-American population as previously speculated (Petrick et al., 2022). *Via* symbiotic analysis, Carr et al. discovered contrasting ARG-species correlations between saliva and stool samples (Carr et al., 2020). Whereas most 16S rRNA gene sequencing analyses only reliably classify taxa to the genus level and do not report species and strains usually. Using shotgun metagenomic sequencing, oral and gut bacterial communities show greater similarity than earlier studies suggested (de Cena et al., 2021; Maki et al., 2021). Moreover, diurnal variations, processing methods, race, and diet are irrelevant interference with measurement results, which requires further consideration in future studies (Superdock and Poole, 2022).

## 3 Host's immune strategy for resisting translocation

The gingiva consists of epithelium, blood vessels, lymphatic vessels, etc., which provides a physical and chemical barrier to separate the external and the internal. However, periodontal tissue is highly susceptible to dysbiosis and inflammation induced by opportunistic pathogens that reside in gingival crevicular fluid and periodontal pockets. Pathological periodontal tissues activate immune responses as the regional accumulation of leukocytes and B cells and the increase of IL-1 $\beta$ , IL-6, and TNF (Lu et al., 2016). Lipopolysaccharide (LPS) produced by oral microbes activates the toll-like receptors (TLR)-nuclearfactor $\kappa$ -B (NF- $\kappa$ B) pathway, a key factor for innate and adaptive immune responses. Moreover, it is widely acknowledged the correlation between periodontitis and systemic low-grade inflammation (e.g., Diabetes, rheumatoid arthritis, IBD, obesity, and cirrhosis) (D'Aiuto et al., 2018; Kroese et al., 2021; Moskovitz et al., 2021). During periodontitis, systemic immunity feeds back on the pathological periodontal region and affects the intestine nonspecifically. Chronic oral infection establishes ectopic oral *F. nucleatum* colonization in the intestine and significantly induces systemic humoral IgG and IgM antibody responses (Velsko et al., 2015). In mice models that are orally administrated with saliva pathogens, endotoxemia and intestinal dysbiosis are induced (Kobayashi et al., 2020). Consistent with this, periodontal therapy effectively proves the dysbiosis in stool and saliva, endotoxin, and salivary or serum inflammation factors in cirrhotics (Bajaj et al., 2018). Long-term chronic inflammation even results in an immunization training effect. Myeloid skewing of hematopoietic progenitor cell differentiation which guides the expression of various microbial product receptors, if chronically activated, potentially sustains chronicity of inflammatory pathologies (Table 1) (Hajishengallis and Chavakis, 2021).

The gut has physiologically formulated multiple strategies to resist colonization by non-native bacteria. Complete mucosa protection contains the joint efforts of symbiotic microbiota, surface liquids, and junctional components (Caballero and Pamer, 2015). *Via* the gingival-intestinal axis, the swallowed saliva transmits enzymes, effector cytokines bacteria, and bioactive inflammatory cell subsets (neutrophils, lymphocytes, and macrophages) to distant locations (Byrd and Gulati, 2021). Macrophages fulfill sentinel functions as the

TABLE 1 Experimental studies of oral microbe in intestinal ecology.

Year	Study objects	Experimental treatment	Microecology variations		16S rRNA Sequencing region
			Phylum	Family/Other classification methods	
2021	C57BL/6J mice	<i>P. gingivalis</i> infection		$\beta$ -diversity varied	V4
2021	diabetes mice			<i>Prevotellaceae</i> ↑	(metagenomic analysis)
2017	C57BL/6 mice	<i>P.gingivalis</i> infection-vs western diet		$\alpha$ -diversity↓	V4
2014	C57BL/6N mice	<i>P.gingivalis</i> infection (W83)-vs placebo control	<i>Bacteroidales</i> ↑ (excluding <i>P. gingivalis</i> )		V5-V6
2015	C57BL/7N mice		<i>Bacteroidetes</i> ↓, <i>Firmicutes</i> ↓		V4
2018	C57BL/8N mice		<i>Deferribacteres</i> ↑, <i>Bacteroidetes</i> ↓	<i>Deferribacteriaceae</i> , <i>Gemellaceae</i> , <i>Clostridiaceae</i> ↑	V4
2019	streptozotocin-induced diabetic C57BL/6J mice and wild-type mice	<i>P.gingivalis</i> infection-vs placebo control	<i>Deferribacteres</i> ↑	<i>Lactobacillus</i> , <i>Turicibacter</i> ↓	V1-V2
2020	C57BL/6 mice	<i>S. mitis</i> , <i>S. salivarius</i> , <i>P. gingivalis</i> or <i>P. nigrescens</i> oral infection		<i>Staphylococcus</i> , <i>Bacteroides</i> ↑	V4
2022	wild-type BALB/cJ mice	Kanamycin sulfate administered and <i>P.gingivalis</i> infection		<i>Acholeplasmataceae</i> ↑	V3-V4 and ITS1
2019	germ-free mice	human saliva transplantation		* <i>Streptococcus</i> , <i>Veillonella</i> , <i>Haemophilus</i> , <i>Fusobacterium</i> , <i>Trichococcus</i> <i>Actinomyces</i> ↑	V4-V5
2021	C57BL/6N mice	administered either vehicle, <i>P. gingivalis</i> , or <i>P. intermedia</i>		<i>Eubacterium fissicatena</i> , <i>Atopostipes</i> <i>Colidextribacter</i> ↑	/
2020	germ-free mice	oral pathobionts or periodontal microbe infection		* <i>Veillonella rogosae</i> , <i>Actinomyces naeslundii</i>	/
2022	C57BL/6J mice	intraperitoneal administration of Pg-LPS		<i>S24-7</i> ↑, <i>Lachnospiraceae</i> , <i>Bacteroides</i> , <i>Lactobacillus</i> ↑	V3-V4
2022	C57BL/6 mice	periodontitis individuals' saliva gavage		<i>Aerococcus Ruminococcus</i> ↑	/
2022	C57BL/6J mice			* <i>Porphyromonadaceae</i> <i>Fusobacterium</i>	V4-V5
2022	C57BL/6Njcl (germ-free) mice				V4
2020	SKG mice	periodontitis induction by <i>P. gingivalis</i>	<i>Bacteroides</i> ↑, <i>Firmicutes</i> , <i>Deferribacteres</i> , <i>Clostridiales</i> ↓	<i>S24-7</i> ↑	V4
2022	apoE mice			<i>Allobaculum</i> , <i>Akkermansia</i> , <i>Sutterella</i> ↑	V3-V4
2020	C57BL/6 J mice	chronic periodontitis induction	<i>Firmicutes</i> , <i>Verrucomicrobia</i> , <i>Acidobacteria</i> ↑, <i>Tenericutes</i> ↓	<i>Dubosiella</i> , <i>Muribaculum</i> , <i>Butyricoccus</i> ↑	V3-V4
2018	C57BL/6 J mice	endotoxemia by intravenous injection of <i>P. gingivalis</i>	<i>Tenericutes</i> , <i>Proteobacteria</i> ↓	<i>Alcaligenaceae</i> , <i>Erysipelotrichaceae</i> ↑, <i>Dehalobacteriaceae</i> , <i>Ruminococcaceae</i> ↓	V3-V4
2017	CIA DBA/1J mice	<i>P.gingivalis</i> OMT	<i>Firmicutes</i> ↑, <i>Bacteroidetes</i> ↓	<i>Prevotella</i> , <i>Bacteroidetes</i> ↓	V4
2020	induced-colitis C57BL/6 mice model	oral <i>Candida albicans</i> infection	<i>Bacteriodes</i> , <i>Proteobacteria</i> ↑	<i>Enterobacter</i> , <i>Pseudomonas</i> ↑	V4
2022	C57BL/6 mice	<i>P. gingivalis</i> infection-vs PBS control	<i>Acholeplasmataceae</i>	<i>Pyricularia pennisetigena</i> , <i>Alternaria alternata</i> ↑	(metagenomic analysis)
2022	T1D germ-free mice	mixed saliva samples inoculation		* <i>Klebsiella pneumoniae</i>	V3-V4

(Continued)

TABLE 1 Continued

Year	Study objects	Experimental treatment	Microecology variations		16S rRNA Sequencing region
			Phylum	Family/Other classification methods	
2020	ligature-induced periodontitis model	/		<i>Klebsiella</i> , <i>Enterobacter</i> †	V4
2021	BALB/c athymic nude mice	/		<i>Blautia</i> , <i>Lachnospiraceae</i> , <i>Streptococcus</i> (CRC locus)†	V4
2022	APPswe/PS1ΔE9 (PAP) transgenic mice	/	<i>Bacteroidetes</i> †, <i>Firmicutes</i> ↓	<i>Sutterella</i> †, <i>Lactobacillus</i> ↓	V3-V4

(\* composition variation of microbiota was detected).

first responder for ectopic microbes (Hausmann et al., 2021). Cells of Paneth autonomously sense LPS via MyD88-dependent TLR, then stimulate antimicrobial cytokines and trigger the downstream NF- $\kappa$ B pathway, which subsequently regulates the production of Th17 cells or Tregs (LPS from *P. gingivalis* induces a stronger Th2 response while *Klebsiella pneumoniae* induces a stronger Th1 response) (Vaishnava et al., 2008; Qi et al., 2022). Proinflammatory pathogens and metabolites gradually predispose the gut to an inflammatory state, manifesting as an enhanced expression of IL-1, IL-6, TNF- $\alpha$ , and vascular endothelial growth factor (VEGF), stimulating the release of collagenase, prostaglandin, and thromboxane (Akdis, 2021) (Figure 2). In IBD, whose major pathogenic processes involve the overreaction (hypersensitivity) of the immune response toward commensal intestinal bacteria, the mutation of the nucleotide-binding oligomerization domain 2 (NOD2) gene results in the reduction of antimicrobial peptides produced by Paneth cells (Larabi et al., 2020).

## 4 Mechanisms of oral microbiome affecting intestinal microbiota

### 4.1 Porphyromonas gingivalis

In general knowledge, *P. gingivalis* is a major pathogen for periodontitis and extensively involves in systemic diseases. To disrupt host-microbial homeostasis of the oral cavity, *P. gingivalis* only needs a microscopic colonization level (<0.01% of the total microbiota presented) (Hajishengallis et al., 2011). Extracellular translocation of *P. gingivalis*-nucleotide-diphosphate-kinase enzyme (NDKs) promotes microbial molecules to disrupt cytoplasm and establishes continuous infection in mucosal epithelial tissues (Atanasova et al., 2016). In mice experiments, a series of symptoms appeared after *P. gingivalis* infection (oral administration, gavage, or intravenous injection), including endotoxemia, intestinal inflammation, and systemic hypoinflammation (Ohtsu et al., 2019; Kashiwagi et al., 2021). Regarding the intestine, *P. gingivalis* infection gives rise to microbiome dysbiosis. It increases serum endotoxin levels, allowing opportunistic pathogens to colonize in the oral cavity and stimulating the overgrowth of commensal microbes in the intestine (generally upregulates *Bacteroidetes* and *Deferribacteres*, and downregulates *Firmicutes*) (Nakajima et al., 2015; Ohtsu et al., 2019). *Pyricularia pennisetigena* and *Alternaria alternata* positively correlated with *P. gingivalis* administration in the fungal community. Serum metabolites are modified correspondingly with microbial alteration, especially lipid

and tryptophan metabolic pathways (Chen et al., 2022). In *P. gingivalis*-administered mice, the biosynthesis of phenylalanine, tyrosine, and tryptophan in the intestinal microbiota are upregulated, with alanine, glutamine, histidine, tyrosine, and phenylalanine in serum promoted considerably in the serum (Kato et al., 2018). In terms of mechanism, *P. gingivalis* and its metabolites (e.g., gingipains and extracellular vesicles) activate antigen-presenting cells, initiating intestinal inflammation and immune reactions. Via stimulating TLR2/4 and inducing Th17 cells, *P. gingivalis* and its metabolites heighten the mRNA expression of TNF- $\alpha$  and IL-1 $\beta$  in the colon (Feng et al., 2020; Tang et al., 2021). Regional inflammation impairs the permeability of the intestinal barrier, specifically, downregulates *tjp-1* and *occludin* gene expression, and decreases colic zonula occludens-1 (Zo-1) level (Nakajima et al., 2015; Feng et al., 2020). Next, the altered proinflammatory cytokines mentioned above modify methionine (Met) and homocysteine (Hcy) metabolism (i.e., 1-carbon metabolism), which potentially stimulates hyperhomocysteinemia (HHcy), another mechanism participating in intestinal dysbiosis (Stanisic et al., 2021). In terms of Th17 cells, a recent study reported a noticeable synergy between periodontal tissue and gut microbes. The intestinal translocation of *P. gingivalis* enhances Th17 cell differentiation, and mature Th17 cells systemically spread to peripheral immune tissue and then exacerbate intestinal inflammation (Sato et al., 2017; Nagao et al., 2022). Consistent with this, the Th17/Treg imbalance induced by disordered intestinal microbial metabolism directly generates NAFLD in *P. gingivalis* administration mice (Yao et al., 2022). Compared to normal individuals, CRC patients' intestines are pathologically colonized with abnormally abundant *P. gingivalis*, whose infection gives rise to a poor CRC prognosis (Gao et al., 2021). Via activating NLRP3 inflammatory vesicles (activated hematopoietic NOD-like receptor protein 3 inflammasomes) *in vitro* and *in vivo*, *P. gingivalis* triggers low-grade systemic inflammation and intestinal dysbiosis, promoting CRC neoplasia progression (Wang et al., 2021a). Moreover, the peptidoglycan from *P. gingivalis* molecules induces programmed cell death 1 ligand 1 (PD-L1) up-regulation in colon carcinoma cells and mediates deep inhibition of T cells (involving activation of RIP2 and MAPK signaling pathways, and NOD1 and NOD2) (Adel-Khattab et al., 2021).

### 4.2 Fusobacterium nucleatum

*F. nucleatum* normally resides in the intestine but increases synchronously with common oral microorganisms during CRC. 40%

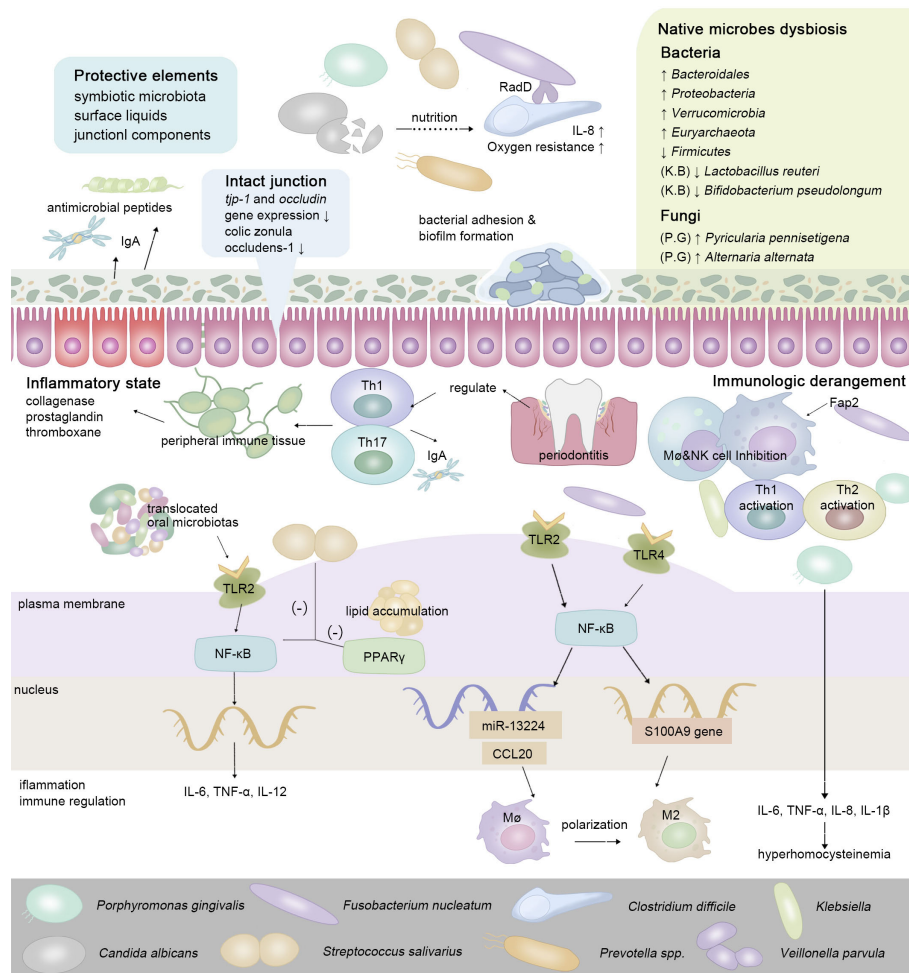


FIGURE 2

To maintain ecological balance, intestinal protective elements resist extra-intestinal microbes in the oral-derived microbiome dysbiosis. In the intestine, the enteral translocation of periodontopathic bacteria brings about gut microbiota dysbiosis and intestinal inflammation, thus weakening the intestinal surface liquids and junctional components (Nakajima et al., 2015; Feng et al., 2020). While interacting with the host's immune system, via enteral route or hematogenous route, oral-derived pathogens regulate the constitution and transformation of immune cells, guiding the transition of the intestinal microenvironment from a healthy state to a pre-disease state. In regard to cell signaling pathways, cells of Paneth autonomously sense a series of oral metabolites via MyD88-dependent toll-like receptor (TLR), then stimulate antimicrobial cytokines and trigger the downstream NF- $\kappa$ B pathway, which subsequently regulates the production of a series of inflammatory cytokines (Vaishnava et al., 2008; Qi et al., 2022).

of the CRC patients detected identical *F. nucleatum* strains in both tumor tissue and saliva (Komiya et al., 2019). Moreover, successful periodontitis treatment reduces stool *F. nucleatum* levels (Yoshihara et al., 2021). Therefore, intestinal pathological *F. nucleatum* may derive from the oral. The continuum of its species and abundance in the GI tract could be an explanation. Transferring from saliva to the lower GI tract, the species diversity and abundance of *F. nucleatum* gradually dropped, indicating they resisted the selective stomach pressure (Richardson et al., 2020). Several *F. nucleatum* subspecies (*nucleatum*, *animalis*, *vincentii*, *polymorphum*) and potential new subspecies are isolated from the intestine of colorectal cancer patients, and the major encoding virulence factors for *F. nucleatum* showed evidence of horizontal gene transfer (Tran et al., 2022). Furthermore, intraperitoneal injection successfully established colonization of *F. nucleatum* in CRC tissue, which suggested the translocation of *F. nucleatum* through hematogenous route (Abed et al., 2020). Ponath et al. report FoxI, a conserved *F. nucleatum* oxygen-inducible picornavirus, acting as a post-transcriptional blocker of the major outer membrane porin FomA, is

favorable for explicating how *F. nucleatum* colonizing in diverse segments in the intestine (Ponath et al., 2021).

In mucosal tissues, the adhered *F. nucleatum* promotes inflammation and stimulates immunoreaction. *F. nucleatum* and its outer membrane vesicles (OMVs) activate TLR/MyD88/NF- $\kappa$ B pathway, promoting the secretion of a series of proinflammatory cytokines, including IL-8, TNF, keratinocyte-derived chemokine (KC), IL-6, IFN- $\gamma$ , and monocyte chemoattractant protein-1 (MCP-1) (Chen et al., 2020b; Engevik et al., 2021b). The colonic structure and mucus layers are damaged and infiltrated with immune cells. When regarding UC, this inflammatory process involves a molecular network including caspase activation, recruitment domain 3 (CARD3), and IL-17F (Cao et al., 2020). In addition, the TLR4-dependent mechanism (TLR4/NF- $\kappa$ B/S100A9 axis and NF- $\kappa$ B/miR-1322/CCL20 axis) promotes the M2 polarization of macrophages (M2-M $\phi$ ) and immunosuppressive effect, suggesting that oral *F. nucleatum* evolves more powerful virulence after colonization (Chen et al., 2018). Another virulence factor *Fusobacterium* produced that participates in immune regulation is the Fap2 protein, which directly

interacts with TIGIT, mediates NK cell and T cell inhibition, while T-cell regulates inflammatory factors IL-10, IL-1 $\beta$ , and IL-6 (Gur et al., 2015; Li et al., 2019). Regarding CRC, *F. nucleatum* and its main pathogenic factors (FadA (binding E-cadherin), Fap2 (a galactose-sensitive hemagglutinin and adhesin binding TIGHT receptors), RadD (autotransporter) and FomA) recruit tumor-infiltrating immune cells, generating tumor microenvironment and participating in immunosuppression and tumorigenesis (Walencik, 2022). *F. nucleatum* modifies colonic Th17 cell frequency and IL-17 expression recombinant free fatty acid receptor 2 (FFAR2)-dependently (Brennan et al., 2021). Moreover, it positively correlated with the expression of Wnt- $\beta$ -catenin (activated by FadA—E-cadherin) and REG I $\alpha$  signaling, both of which effectively promotes the proliferation of sessile serrated adenoma/polyp (Rubinstein et al., 2013; Nishimura et al., 2021). *ENO1* gene and ANGPTL4 protein enhance the high glycolysis of colorectal cancer cells, and these two regulatory mechanisms could be upregulated by *F. nucleatum* either, which further support *F. nucleatum* colonization and positively collated with poor prognosis (Hong et al., 2021; Zheng et al., 2021). Besides, it is a notable phenomenon in periodontal disease that a variety of bacteria, including *F. nucleatum* and *P. gingivalis*, mutually coordinate for coexistence. Presumably, this symbiosis continues to the intestine. In the intestine, *F. nucleatum* coexists with *Clostridium* through adhesin RadD, encouraging the intestinal mucus layer's bacterial biofilm formation in IBD patients. This symbiotic relationship accelerates the extracellular polysaccharides-producing process and chemotaxis level of *C. difficile* (Engevik et al., 2021a).

### 4.3 Klebsiella

*Klebsiella* is an opportunistic pathogen in the GI and respiratory tracts. Although a few *Klebsiella* physiologically colonizes in the intestine, in pathological states such as periodontitis, it demonstrates signs of ectopic colonization from the oral. Researchers found that saliva *K. pneumoniae* of IBD patients rapidly establishes colonization in mice's intestines, triggering a strong inflammatory response (upregulates IFN- $\gamma$ , TH1 in the lamina propria, raises epithelial TNF- $\alpha$  mRNA expression in the proximal colon, and significantly induces IL-17, IFN- $\gamma$  and CD4<sup>+</sup> T cells level) (Atarashi et al., 2017). In mice models that were orally administrated with *K. pneumoniae*, the hypervirulent strain could even translocate from the intestine and lead to hepatic infections (Young et al., 2020). Th17 cell induction acts as a critical step in IBD pathogenesis and involves in regulating intestinal immunity and inflammation. Oral pathobiont-reactive Th17 cells (*Klebsiella* and *Enterobacter* species), rather than intestinal native microbes-reactive, translocate into the intestine and affect colitis progress (Kitamoto et al., 2020). Moreover, translocated *Klebsiella* promotes the secretion of IL-1 $\beta$  (mainly from inflammatory macrophages) via cysteine-11-mediated inflammatory vesicles, activating intestinal inflammasome (Kitamoto et al., 2020). For the intestine-native microbiome, in the *K. pneumoniae* infection mice model, gut microbial composition (down-regulates *Lactobacillus reuteri* and *Bifidobacterium pseudolongum*) and cecal metabolome (SCFAs) are altered (Wu et al., 2020). Whereas sufficient symbiotic microbe protection from *Bacteroidetes* could prevent the host-to-host transmission and intestinal colonization of *K. pneumoniae* via IL-36 signaling (Sequeira et al., 2020).

### 4.4 Streptococcus salivarius

Two-group pheromone-based subsystem BIpRH is the core node coordinating bacteriocin production and integrating signals of competence activation cascade, typically for *S. pneumoniae* and *S. mutans*. Whereas human co-salivary *Streptococcus* lacks functional BIpRH pairs, the couples bacteriocin production and competence commitment is directly guided by the competence signaling system ComRS, which is the undetermined basis for its optimal adaptation, potentially explaining the high prevalence of *S. salivarius* in the human GI tract (Mignolet et al., 2018). Aside from benefiting oral health, in terms of its effect on intestinal function, the *S. salivarius* in the lower gastrointestinal tract is crucial for inhabiting intestinal inflammation response. It positively adjusts microbiome composition and intestinal immunity, even in healthy individuals, the predominant intestinal *Streptococcus* species is *S. salivarius* (Kaci et al., 2014; Li et al., 2022). It is confirmed that *S. salivarius* downregulates NF- $\kappa$ B pathway that triggered by LPS and inhibits peroxisome proliferator-activated receptor  $\gamma$  (PPAR $\gamma$ ) activation in small intestinal epithelial cells *in vitro* (Couvigny et al., 2015). Likewise, both mice experiment and metabolic gene sequencing (*I-FABP* and *Angptl4*, these gene products regulate intracellular lipid accumulation) revealed *S. salivarius*'s protective ability to diminish intestinal epithelial inflammation (Kaci et al., 2014; Couvigny et al., 2015). For non-small cell lung cancer patients, *S. salivarius* and *S. agalactiae* react upon gastrointestinal-derived CD4<sup>+</sup> T cells and effectively activate monocytes to secrete higher levels of IL-6, IL-12 and TNF, or so-called, the Th1- and Th17-skewed cytokines (Ma et al., 2017). However, *S. salivarius* is also reported to disturb intestinal microbiota composition. Oral *S. salivarius* was found to be enriched and of concordant strains in both intestinal and oral microbiota in Crohn's disease patients, and the species diversity of the infected intestine was considerably depleted (Hu et al., 2021).

### 4.5 Prevotella

Although most *Prevotella* species physiologically colonize in oral and gut mucosa, a small number of *Prevotella* show pathobiontic properties and have been confirmed to participate in opportunistic infections. Distinct from intestinal native microbes, *Prevotella* owns a unique nitrogen assimilation metabolic network that rarely limits their growth. Jong Nam Kim et al. observed different patterns of transcript abundances in genes involving ammonium assimilation between the classical "enteric paradigm" and *Prevotella* (Kim et al., 2017). *Prevotella* act as a vital keystone bacterium of the gut. Binding or attaching to other bacteria and epithelium, *Prevotella* creates a larger infection than in previously infected areas. A higher abundance of *P. intermedia* and *P. nigrescens* (*Prevotella* species that are commonly resident in the oral cavity) was observed in the intestine of CRC patients (Wirbel et al., 2019). In mice experiments, oral administration of *P. intermedia* induces NAFLD (Yamazaki et al., 2021). In terms of IBD, *Prevotella* is a potential alternative biomarker for UC, tightly matched with feces and other oral areas (Xun et al., 2018). Moreover, *Prevotella* predominates in the intestinal microbiome in the preclinical phase of rheumatoid arthritis, promoting pathological progression in a TH17 cell-dependent



manner (Alpizar-Rodriguez et al., 2019; Maeda and Takeda, 2019). In a metagenome-wide association study (MWAS) of the gut microbiome from rheumatoid arthritis patients, Toshihiro Kishikawa et al. identified five species that belong to the *Prevotella* (i.e., *P. denticola*, *P. marshii*, *P. disiens*, *P. corporis*, and *P. amnii*) (Kishikawa et al., 2020). Additionally, the major task for intestinal *Prevotella* is metabolizing various proteins and carbohydrates. Consequently, high animal protein and saturated fat diet western people own higher diversity of inflammation-associated *Prevotella* in the oral cavity, with intestinal microbes demonstrating upregulated virulence factor and antibiotic resistance gene levels. (Prasoodanan et al., 2021).

## 4.6 Veillonella

*V. parvula* is an anaerobic commensal and opportunistic pathogen that plays a crucial role in bacteria adhesion and biofilm formation for oral and gut microbiomes. Type V secreted autotransporters that typically exist in diderm bacteria determine this character. Whereas inactivation of the gene coding for a poorly characterized metal-dependent phosphohydrolase HD domain protein in *Firmicutes* could inhibit autotransporter-mediated biofilm formation (Bechon et al., 2020). Intestinal *Veillonella* attaches to the mucosa of the distal gut and positively coexists with *Clostridioides* in *C. difficile* colonization (CDC) patients (Crobach et al., 2020). Besides, it was detected the existence of *Veillonella* and *Streptococcus* in atherosclerotic plaques, whose bacterial abundances positively correlated with their abundance in the oral cavity, indicating that oral *Veillonella* probably spread to extraoral organs via the circulatory system (Koren et al., 2011). *Veillonella* extensively participates in a range of diseases associated with gastrointestinal microbial dysbiosis, for instance, hepatic and gall diseases (autoimmune hepatitis, alcoholic hepatitis, biliary atresia, and PSC) (Kummen et al., 2017; Song et al., 2021). Actually, *Veillonella* is acid-sensitive, the abundance of *Veillonella* heightens when aldafermin-mediated suppressions of bile acid synthesis, particularly toxic bile acids, are inhibited (Loomba et al., 2021). When regarding IBD, the enrichment of adhesive bacteria (involving *Veillonella*) increases Th17 cell activation and luminal secretory IgA (Chen et al., 2020a; Gonzalez-Soltero et al., 2020). In periodontitis-associated type 2 diabetes (T2D), *Streptococcus* and *Veillonella* are dominant in the symbiosis network, and microbial shifts may contribute to systemic inflammation and metabolic dysfunction (Li et al., 2020; Letchumanan et al., 2022).

## 4.7 Candida albicans

It is almost impossible for fungi to survive in healthy people's intestines, and *C. Albicans* dominate among the cultivable mycobiota that longitudinally persists. Intestinal *C. Albicans* probably as commensals constantly supplemented from the oral cavity, frequent teeth cleaning dramatically reduces fecal *C. Albicans* abundance (Auchtung et al., 2018; Raimondi et al., 2019). Whereas for immunocompromised individuals, intestinal fungi and fungal molecules could result in serious infections and produce severe

bacterial sepsis via cytokine storm induction or macrophage-killing activity. *C. Albicans* gavage worsens the colitis in mice experiments, gut-leakage induces pro-inflammatory cytokines in the intestine and blood, which was hypothesized as a more severe translocation of LPS, serum (1→3)-β-D-glucan (BG) and bacteria from the gut into the systemic circulation (Panpetch et al., 2020). Regarding colonization and dissemination, in the gut, dead fungi are nutrients for bacterial fermentation. In the presence of *C. Albicans*, the opportunistic bacterium *C. difficile* can tolerate aerobic conditions, and the p-cresol produced by *C. difficile* inhibit *C. Albicans*' hypha formation, biofilm formation, and virulence (van Leeuwen et al., 2016). This symbiotic relationship leads to more severe infection of *C. difficile* in mice models and increases IL-8 production in experimental intestinal epithelial cell-lines (Panpetch et al., 2019). Regarding the susceptibility to *C. Albicans*, *C. Albicans* infection could be promoted by intestinal taurocholic acid (TCA) that weakens mucosal innate and adaptive immune responses (Datta et al., 2022). Besides, the host's high iron level enhances *C. Albicans* infection severity and its dissemination from the oral to the gut (Tripathi et al., 2022). However, endogenous invasion by *C. Albicans* could be prevented by intestinal TLR2, and intravenous immunoglobulin (IVIg) has been proven useful for treating *C. Albicans* infection and maintaining intestinal homeostasis, which negatively regulates PPARγ and TLR-4 (Prieto et al., 2016; Charlet et al., 2019).

## 4.8 Other pathogens

The intestinal microecological disorder is a process affecting multi-bacterial composition. In addition to common oral pathogens mentioned above, for instance, *Peptostreptococcus stomatis* engages in gastrointestinal cancers and is of significant centralities in the gastric carcinoma (GC) ecological network, which mediates the pathogenesis of precancerous gastric atrophy (GA) and intestinal metaplasia (IM) (Coker et al., 2018; Wu et al., 2022). Regarding IBD and CRC, *P. stomatis* is among the oral-derived biomarker panel of CRC either (Yu et al., 2017; Osman et al., 2021). *Gemella* enriches in the intestinal mucosa of IBD and CRC, while *Mogibacterium* is significantly more abundant in patients with adenomatous polyps (Hale et al., 2017; Rengarajan et al., 2020; Avuthu and Guda, 2022). Intestinal bacteriophages could communicate with gut-oral bacterial commensals, which promotes individuals' virome profile differentiation at the early and late stages of CRC (Nakatsu et al., 2018). In terms of gastrointestinal motility disorders, a polybacterial infection (*P. gingivalis*, *T. denticola*, and *Tannerella forsythia*) is discovered to alter vascular and colonic BH4/nNOS/NRF2 pathways and to damage vascular relaxation and colonic motility (Gangula et al., 2015). In addition, oral lantibiotics (it has a considerable antimicrobial effect on intestinal gram-positive bacteria) produced by *S. mutans* decrease the diversity of intestinal microbes and reduce the abundance of *Firmicutes* (Yonezawa et al., 2021).

## 5 Conclusion and perspectives

Growing evidence supports the associations between oral microbes and intestinal diseases. The prevalence and severity of oral diseases

(e.g., periodontitis) are closely linked with the intestinal healthy state. In recent years, several intestinal pathobionts (*P. gingivalis*, *F. nucleatum*, *P. intermedia*, *P. nigrescens*, *C. albicans*, etc.) showed potential origin from the oral cavity *via* direct enteral translocation or through the circulatory system. Using deep learning algorithms, the fecal microbiome could be predicted by the oral microbiome of the same individual in a new bioinformatic tool (Rampelli et al., 2021). For enteral ectopic translocation, oral microbes have to overcome the harsh protective elements (e.g., gastric acid, bile acid, and native microbes). Consequently, the detected oral microorganisms in the lower GI tract are usually low-abundant. With the development of next-generation sequencing (NGS), the consistency between the two sites is more detectable and demonstrates further correlations than in earlier studies. In mice experiments, oral administration of oral pathobionts leads to intestinal dysbiosis, regional intestinal inflammation, and low-grade endotoxemia. Although the amount and method of intake differ from the natural state, it provides references to the possible effect of oral pathobionts on the gut, and more experiments are required to determine the species and proportion of pathobionts, the precise site of their colonization, the time of their presence, and the crosstalk with native microbes and the immune system. The circulatory system, as a channel for bacterial expansion, also facilitates the widespread dissemination of oral pathobionts. Periodontitis is generally accepted associating with systemic low-grade inflammatory diseases. The footprint of the oral-origin microbiome has been detected in extraoral organs including the heart and aortic valves. Oral microbes and their products induce immune responses *via* the bloodstream, which regulates the host's overall inflammatory state, stimulating TLR-NF- $\kappa$ B pathway or regulating TH17/Treg ratio. In addition, it is a notable phenomenon for pathogenic microbes such as *F. nucleatum*, *C. difficile*, and *P. gingivalis* communicating and adhering with each other. In mucosal biofilms, interspecies interactions that influence spatial organization modify microbial communities' formation and function. Hence, it is also interesting to investigate how these oral microbes influence the survival of native microorganisms.

16S rRNA sequencing and conventional bacterial identification and quantification methods are suitable for identifying well-characterized and abundant genera. However, frequently using 1% as the threshold for excluding the low-abundant organisms, some oral-origin microbiome species in the intestine may escape detection unconsciously. The SourceTracker results showed that the percentage of intestinal bacteria from the tongue-coated microflora was within 1% (Guo et al., 2022). Moreover, diet and diurnal variation are independent variables that affect the composition of microbes in

the GI tract, which needs further consideration while analyzing microbial communities.

The study of oral-gut microbes has gained popularity, not only for its role in intestinal and systemic diseases that have gradually been explored but also for its offering new approaches to conveniently detectable biomarkers and clinical therapy methods. Various probiotics, prebiotics, and even herbal medicines that work by modifying gut microbes' variations have been proven of positive therapeutic outcomes. Both saliva and gut microbes are potential biomarkers for diagnosis. This clue indicates an overall idea to manage oral health and intestinal diseases coordinately in the future, and this approach is still in its infancy. As the attention to oral health grows, studying the effect of oral microbes on the intestine opens up new insight into preventing and controlling intestinal diseases and discovering new therapies.

## Author contributions

YL, ZL, and XP wrote and edited the manuscript. ZL and XP critically reviewed the manuscript and provided insightful discussions and ideas. YL and ZL contributed equally to this work and share first authorship. All authors contributed to the article and approved the submitted version.

## Funding

This work is supported by grant 32070120 from the National Natural Science Foundation of China.

## Conflict of interest

The authors declare that the research was conducted in the absence of any commercial or financial relationships that could be construed as a potential conflict of interest.

## Publisher's note

All claims expressed in this article are solely those of the authors and do not necessarily represent those of their affiliated organizations, or those of the publisher, the editors and the reviewers. Any product that may be evaluated in this article, or claim that may be made by its manufacturer, is not guaranteed or endorsed by the publisher.

## References

- Abdel, J., Maalouf, N., Manson, A. L., Earl, A. M., Parhi, L., Emgard, J. E. M., et al. (2020). Colon cancer-associated fusobacterium nucleatum may originate from the oral cavity and reach colon tumors *via* the circulatory system. *Front. Cell Infect. Microbiol.* 10. doi: 10.3389/fcimb.2020.00400
- Adel-Khattab, D., Groeger, S., Domann, E., Chakraborty, T., Lochnit, G., and Meyle, J. (2021). *Porphyromonas gingivalis* induced up-regulation of PD-L1 in colon carcinoma cells. *Mol. Oral. Microbiol.* 36 (3), 172–181. doi: 10.1111/omi.12332
- Akdis, C. A. (2021). Does the epithelial barrier hypothesis explain the increase in allergy, autoimmunity and other chronic conditions? *Nat. Rev. Immunol.* 21 (11), 739–751. doi: 10.1038/s41577-021-00538-7
- Albillos, A., de Gottardi, A., and Rescigno, M. (2020). The gut-liver axis in liver disease: Pathophysiological basis for therapy. *J. Hepatol.* 72 (3), 558–577. doi: 10.1016/j.jhep.2019.10.003
- Albuquerque-Souza, E., and Sahingur, S. E. (2022). Periodontitis, chronic liver diseases, and the emerging oral-gut-liver axis. *Periodontol 2000* 89 (1), 125–141. doi: 10.1111/prd.12427
- Alpizar-Rodriguez, D., Lesker, T. R., Gronow, A., Gilbert, B., Raemy, E., Lamacchia, C., et al. (2019). Prevalence of copri in individuals at risk for rheumatoid arthritis. *Ann. Rheum. Dis.* 78 (5), 590–593. doi: 10.1136/annrheumdis-2018-214514

- Atanasova, K., Lee, J., Roberts, J., Lee, K., Ojcius, D. M., and Yilmaz, O. (2016). Nucleoside-Diphosphate-Kinase of *p. gingivalis* is secreted from epithelial cells in the absence of a leader sequence through a pannexin-1 interactome. *Sci. Rep.* 6, 37643. doi: 10.1038/srep37643
- Atarashi, K., Suda, W., Luo, C., Kawaguchi, T., Motoo, I., Narushima, S., et al. (2017). Ectopic colonization of oral bacteria in the intestine drives TH1 cell induction and inflammation. *Science* 358 (6361), 359–365. doi: 10.1126/science.aan4526
- Auchtung, T. A., Fofanova, T. Y., Stewart, C. J., Nash, A. K., Wong, M. C., Gesell, J. R., et al. (2018). Investigating colonization of the healthy adult gastrointestinal tract by fungi. *mSphere* 3 (2), e00092-18. doi: 10.1128/mSphere.00092-18
- Avuthu, N., and Guda, C. (2022). Meta-analysis of altered gut microbiota reveals microbial and metabolic biomarkers for colorectal cancer. *Microbiol. Spectr.* 10 (4), e0001322. doi: 10.1128/spectrum.00013-22
- Bajaj, J. S., Matin, P., White, M. B., Fagan, A., Deeb, J. G., Acharya, C., et al. (2018). Periodontal therapy favorably modulates the oral-gut-hepatic axis in cirrhosis. *Am. J. Physiol. Gastrointest. Liver Physiol.* 315 (5), G824–G837. doi: 10.1152/ajpgi.00230.2018
- Bao, J., Li, L., Zhang, Y., Wang, M., Chen, F., Ge, S., et al. (2022). Periodontitis may induce gut microbiota dysbiosis via salivary microbiota. *Int. J. Oral Sci.* 14 (1), 32. doi: 10.1038/s41368-022-00183-3
- Barbour, A., Elebyary, O., Fine, N., Oveis, M., and Glogauer, M. (2022). Metabolites of the oral microbiome: Important mediators of multikingdom interactions. *FEMS Microbiol. Rev.* 46 (1), fuab039. doi: 10.1093/femsre/fuab039
- Barlow, J. T., Leite, G., Romano, A. E., Sedighi, R., Chang, C., Celly, S., et al. (2021). Quantitative sequencing clarifies the role of disruptor taxa, oral microbiota, and strict anaerobes in the human small-intestine microbiome. *Microbiome* 9 (1), 214. doi: 10.1186/s40168-021-01162-2
- Baumgartner, M., Lang, M., Holley, H., Crepez, D., Hausmann, B., Pjevac, P., et al. (2021). Mucosal biofilms are an endoscopic feature of irritable bowel syndrome and ulcerative colitis. *Gastroenterology* 161 (4), 1245–1256.e1220. doi: 10.1053/j.gastro.2021.06.024
- Bechon, N., Jimenez-Fernandez, A., Witwinowski, J., Bierque, E., Taib, N., Cokelaer, T., et al. (2020). Autotransporters drive biofilm formation and autoaggregation in the diderm firmicute *veillonella parvula*. *J. Bacteriol.* 202 (21), e00461-20. doi: 10.1128/JB.00461-20
- Brennan, C. A., Clay, S. L., Lavoie, S. L., Bae, S., Lang, J. K., Fonseca-Pereira, D., et al. (2021). *Fusobacterium nucleatum* drives a pro-inflammatory intestinal microenvironment through metabolite receptor-dependent modulation of IL-17 expression. *Gut Microbes* 13 (1), 1987780. doi: 10.1080/19490976.2021.1987780
- Byrd, K. M., and Gulati, A. S. (2021). The “Gum-gut” axis in inflammatory bowel diseases: A hypothesis-driven review of associations and advances. *Front. Immunol.* 12. doi: 10.3389/fimmu.2021.620124
- Caballero, S., and Pamer, E. G. (2015). Microbiota-mediated inflammation and antimicrobial defense in the intestine. *Annu. Rev. Immunol.* 33, 227–256. doi: 10.1146/annurev-immunol-032713-120238
- Cao, P., Chen, Y., Guo, X., Chen, Y., Su, W., Zhan, N., et al. (2020). *Fusobacterium nucleatum* activates endoplasmic reticulum stress to promote crohn's disease development via the upregulation of CARD3 expression. *Front. Pharmacol.* 11. doi: 10.3389/fphar.2020.00106
- Carrion, J., Scisci, E., Miles, B., Sabino, G. J., Zeituni, A. E., Gu, Y., et al. (2012). Microbial carriage state of peripheral blood dendritic cells (DCs) in chronic periodontitis influences DC differentiation, atherogenic potential. *J. Immunol.* 189 (6), 3178–3187. doi: 10.4049/jimmunol.1201053
- Carr, V. R., Witherden, E. A., Lee, S., Shoaie, S., Mullany, P., Proctor, G. B., et al. (2020). Abundance and diversity of resistomes differ between healthy human oral cavities and gut. *Nat. Commun.* 11 (1), 693. doi: 10.1038/s41467-020-14422-w
- Charlet, R., Sendid, B., Kaveri, S. V., Poulain, D., Bayry, J., and Jawhara, S. (2019). Intravenous immunoglobulin therapy eliminates candida albicans and maintains intestinal homeostasis in a murine model of dextran sulfate sodium-induced colitis. *Int. J. Mol. Sci.* 20 (6), 1473. doi: 10.3390/ijms20061473
- Chen, Y., Chen, Y., Cao, P., Su, W., Zhan, N., and Dong, W. (2020b). *Fusobacterium nucleatum* facilitates ulcerative colitis through activating IL-17F signaling to NF-kappaB via the upregulation of CARD3 expression. *J. Pathol.* 250 (2), 170–182. doi: 10.1002/path.5358
- Chen, T., Li, Q., Wu, J., Wu, Y., Peng, W., Li, H., et al. (2018). *Fusobacterium nucleatum* promotes M2 polarization of macrophages in the microenvironment of colorectal tumours via a TLR4-dependent mechanism. *Cancer Immunol. Immunother.* 67 (10), 1635–1646. doi: 10.1007/s00262-018-2233-x
- Chen, S., Niu, C., and Lv, W. (2022). Multi-omics insights reveal the remodeling of gut mycobiome with *p. gingivalis*. *Front. Cell Infect. Microbiol.* 12. doi: 10.3389/fcimb.2022.937725
- Chen, B., Ye, D., Luo, L., Liu, W., Peng, K., Shu, X., et al. (2020a). Adhesive bacteria in the terminal ileum of children correlates with increasing Th17 cell activation. *Front. Pharmacol.* 11. doi: 10.3389/fphar.2020.588560
- Chung, M., Zhao, N., Meier, R., Koestler, D. C., Wu, G., de Castillo, E., et al. (2021). Comparisons of oral, intestinal, and pancreatic bacterial microbiomes in patients with pancreatic cancer and other gastrointestinal diseases. *J. Oral Microbiol.* 13 (1), 1887680. doi: 10.1080/20002297.2021.1887680
- Coker, O. O., Dai, Z., Nie, Y., Zhao, G., Cao, L., Nakatsu, G., et al. (2018). Mucosal microbiome dysbiosis in gastric carcinogenesis. *Gut* 67 (6), 1024–1032. doi: 10.1136/gutjnl-2017-314281
- Couvigny, B., de Wouters, T., Kaci, G., Jacouton, E., Delorme, C., Dore, J., et al. (2015). Commensal *streptococcus salivarius* modulates PPARgamma transcriptional activity in human intestinal epithelial cells. *PLoS One* 10 (5), e0125371. doi: 10.1371/journal.pone.0125371
- Crobach, M. J. T., Ducarmon, Q. R., Terveer, E. M., Harmanus, C., Sanders, I., Verduin, K. M., et al. (2020). The bacterial gut microbiota of adult patients infected, colonized or noncolonized by clostridioides difficile. *Microorganisms* 8 (5), 677. doi: 10.3390/microorganisms8050677
- D'Aiuto, F., Gkraniias, N., Bhowruth, D., Khan, T., Orlandi, M., Suvan, J., et al. (2018). Systemic effects of periodontitis treatment in patients with type 2 diabetes: A 12 month, single-centre, investigator-masked, randomised trial. *Lancet Diabetes Endocrinol.* 6 (12), 954–965. doi: 10.1016/S2213-8587(18)30038-X
- Datta, A., Hernandez-Franco, J. F., Park, S., Olson, M. R., HogenEsch, H., and Thangamani, S. (2022). Bile acid regulates mononuclear phagocytes and T helper 17 cells to control candida albicans in the intestine. *J. Fungi (Basel)* 8 (6), 610. doi: 10.3390/jof8060610
- de Cena, J. A., Zhang, J., Deng, D., Dame-Teixeira, N., and Do, T. (2021). Low-abundant microorganisms: The human microbiome's dark matter, a scoping review. *Front. Cell Infect. Microbiol.* 11. doi: 10.3389/fcimb.2021.689197
- Deppe, H., Reitberger, J., Behr, A. V., Vitanova, K., Lange, R., Wantia, N., et al. (2022). Oral bacteria in infective endocarditis requiring surgery: A retrospective analysis of 134 patients. *Clin. Oral. Investig.* 26 (7), 4977–4985. doi: 10.1007/s00784-022-04465-2
- Dinakaran, V., Mandape, S. N., Shuba, K., Pratap, S., Sakhare, S. S., Tabatabai, M. A., et al. (2018). Identification of specific oral and gut pathogens in full thickness colon of colitis patients: Implications for colon motility. *Front. Microbiol.* 9. doi: 10.3389/fmicb.2018.03220
- Engevik, M. A., Danhof, H. A., Auchtung, J., Endres, B. T., Ruan, W., Basseres, E., et al. (2021a). *Fusobacterium nucleatum* adheres to clostridioides difficile via the RadD adhesin to enhance biofilm formation in intestinal mucus. *Gastroenterology* 160 (4), 1301–1314.e1308. doi: 10.1053/j.gastro.2020.11.034
- Engevik, M. A., Danhof, H. A., Ruan, W., Engevik, A. C., Chang-Graham, A. L., Engevik, K. A., et al. (2021b). *Fusobacterium nucleatum* secretes outer membrane vesicles and promotes intestinal inflammation. *mBio* 12 (2), e02706-20. doi: 10.1128/mBio.02706-20
- Faith, J. J., Guruge, J. L., Charbonneau, M., Subramanian, S., Seedorf, H., Goodman, A. L., et al. (2013). The long-term stability of the human gut microbiota. *Science* 341 (6141), 1237439. doi: 10.1126/science.1237439
- Fan, X., Alekseyenko, A. V., Wu, J., Peters, B. A., Jacobs, E. J., Gapstur, S. M., et al. (2018). Human oral microbiome and prospective risk for pancreatic cancer: A population-based nested case-control study. *Gut* 67 (1), 120–127. doi: 10.1136/gutjnl-2016-312580
- Feng, Y. K., Wu, Q. L., Peng, Y. W., Liang, F. Y., You, H. J., Feng, Y. W., et al. (2020). Oral *p. gingivalis* impairs gut permeability and mediates immune responses associated with neurodegeneration in LRRK2 R1441G mice. *J. Neuroinflamm.* 17 (1), 347. doi: 10.1186/s12974-020-02027-5
- Figuro, E., Lindahl, C., Marin, M. J., Renvert, S., Herrera, D., Ohlsson, O., et al. (2014). Quantification of periodontal pathogens in vascular, blood, and subgingival samples from patients with peripheral arterial disease or abdominal aortic aneurysms. *J. Periodontol* 85 (9), 1182–1193. doi: 10.1902/jop.2014.130604
- Fourie, N. H., Wang, D., Abey, S. K., Sherwin, L. B., Joseph, P. V., Rahim-Williams, B., et al. (2016). The microbiome of the oral mucosa in irritable bowel syndrome. *Gut Microbes* 7 (4), 286–301. doi: 10.1080/19490976.2016.1162363
- Gangula, P., Ravella, K., Chukkappalli, S., Rivera, M., Srinivasan, S., Hale, A., et al. (2015). Polybacterial periodontal pathogens alter vascular and gut BH4/nNOS/NRF2-phase II enzyme expression. *PLoS One* 10 (6), e0129885. doi: 10.1371/journal.pone.0129885
- Gao, R., Zhu, Y., Kong, C., Xia, K., Li, H., Zhu, Y., et al. (2021). Alterations, interactions, and diagnostic potential of gut bacteria and viruses in colorectal cancer. *Front. Cell Infect. Microbiol.* 11. doi: 10.3389/fcimb.2021.657867
- Gonzalez-Soltero, R., Bailen, M., de Lucas, B., Ramirez-Goercke, M. I., Pareja-Galeano, H., and Larrosa, M. (2020). Role of oral and gut microbiota in dietary nitrate metabolism and its impact on sports performance. *Nutrients* 12 (12), 3611. doi: 10.3390/nu12123611
- Guo, X. J., Jiang, T., Ma, X. X., Hu, X. J., Huang, J. B., Cui, L. T., et al. (2022). Relationships between diurnal changes of tongue coating microbiota and intestinal microbiota. *Front. Cell Infect. Microbiol.* 12. doi: 10.3389/fcimb.2022.813790
- Gur, C., Ibrahim, Y., Isaacson, B., Yamin, R., Abed, J., Gamliel, M., et al. (2015). Binding of the Fap2 protein of *fusobacterium nucleatum* to human inhibitory receptor TIGIT protects tumors from immune cell attack. *Immunity* 42 (2), 344–355. doi: 10.1016/j.immuni.2015.01.010
- Hajishengallis, G., and Chavakis, T. (2021). Local and systemic mechanisms linking periodontal disease and inflammatory comorbidities. *Nat. Rev. Immunol.* 21 (7), 426–440. doi: 10.1038/s41577-020-00488-6
- Hajishengallis, G., Liang, S., Payne, M. A., Hashim, A., Jotwani, R., Eskan, M. A., et al. (2011). Low-abundance biofilm species orchestrates inflammatory periodontal disease through the commensal microbiota and complement. *Cell Host Microbe* 10 (5), 497–506. doi: 10.1016/j.chom.2011.10.006
- Hale, V. L., Chen, J., Johnson, S., Harrington, S. C., Yab, T. C., Smyrk, T. C., et al. (2017). Shifts in the fecal microbiota associated with adenomatous polyps. *Cancer Epidemiol. Biomarkers Prev.* 26 (1), 85–94. doi: 10.1158/1055-9965.EPI-16-0337
- Hausmann, A., Felmy, B., Kunz, L., Kroon, S., Berthold, D. L., Ganz, G., et al. (2021). Intercrypt sentinel macrophages tune antibacterial NF-kappaB responses in gut epithelial cells via TNF. *J. Exp. Med.* 218 (11), e20210862. doi: 10.1084/jem.20210862

- Hong, J., Guo, F., Lu, S. Y., Shen, C., Ma, D., Zhang, X., et al. (2021). F. nucleatum targets lncRNA ENO1-IT1 to promote glycolysis and oncogenesis in colorectal cancer. *Gut* 70 (11), 2123–2137. doi: 10.1136/gutjnl-2020-322780
- Hu, S., Png, E., Gowans, M., Ong, D. E. H., de Sessions, P. F., Song, J., et al. (2021). Ectopic gut colonization: A metagenomic study of the oral and gut microbiome in crohn's disease. *Gut Pathog.* 13 (1), 13. doi: 10.1186/s13099-021-00409-5
- Jackson, M. A., Goodrich, J. K., Maxam, M. E., Freedberg, D. E., Abrams, J. A., Poole, A. C., et al. (2016). Proton pump inhibitors alter the composition of the gut microbiota. *Gut* 65 (5), 749–756. doi: 10.1136/gutjnl-2015-310861
- Jensen, A., Ladegaard Gronkjaer, L., Holmstrup, P., Vilstrup, H., and Kilian, M. (2018). Unique subgingival microbiota associated with periodontitis in cirrhosis patients. *Sci. Rep.* 8 (1), 10718. doi: 10.1038/s41598-018-28905-w
- Jia, B., Kim, K. H., Ruan, W., Kim, H. M., and Jeon, C. O. (2022). Lantibiotic-encoding streptococcus in the human microbiome are underlying risk factors for liver diseases. *J. Infect.* 84 (5), e70–e72. doi: 10.1016/j.jinf.2022.02.020
- Kaci, G., Goudercourt, D., Dennin, V., Pot, B., Dore, J., Ehrlich, S. D., et al. (2014). Anti-inflammatory properties of streptococcus salivarius, a commensal bacterium of the oral cavity and digestive tract. *Appl. Environ. Microbiol.* 80 (3), 928–934. doi: 10.1128/AEM.03133-13
- Kashiwagi, Y., Aburaya, S., Sugiyama, N., Narukawa, Y., Sakamoto, Y., Takahashi, M., et al. (2021). *Porphyromonas gingivalis* induces entero-hepatic metabolic derangements with alteration of gut microbiota in a type 2 diabetes mouse model. *Sci. Rep.* 11 (1), 18398. doi: 10.1038/s41598-021-97868-2
- Kato, T., Yamazaki, K., Nakajima, M., Date, Y., Kikuchi, J., Hase, K., et al. (2018). Oral administration of *porphyromonas gingivalis* alters the gut microbiome and serum metabolome. *mSphere* 3 (5), e00460-18. doi: 10.1128/mSphere.00460-18
- Kim, J. N., Mendez-Garcia, C., Geier, R. R., Iakiviak, M., Chang, J., Cann, I., et al. (2017). Metabolic networks for nitrogen utilization in *prevotella ruminicola* 23. *Sci. Rep.* 7 (1), 7851. doi: 10.1038/s41598-017-08463-3
- Kishikawa, T., Maeda, Y., Nii, T., Motooka, D., Matsumoto, Y., Matsushita, M., et al. (2020). Metagenome-wide association study of gut microbiome revealed novel aetiology of rheumatoid arthritis in the Japanese population. *Ann. Rheum. Dis.* 79 (1), 103–111. doi: 10.1136/annrheumdis-2019-215743
- Kitamoto, S., Nagao-Kitamoto, H., Jiao, Y., Gilliland, M. G.3rd, Hayashi, A., Imai, J., et al. (2020). The intermucosal connection between the mouth and gut in commensal pathobiont-driven colitis. *Cell* 182 (2), 447–462.e414. doi: 10.1016/j.cell.2020.05.048
- Kobayashi, R., Ogawa, Y., Hashizume-Takizawa, T., and Kurita-Ochiai, T. (2020). Oral bacteria affect the gut microbiome and intestinal immunity. *Pathog. Dis.* 78 (3), ftaa024. doi: 10.1093/femspd/ftaa024
- Komiya, Y., Shimomura, Y., Higurashi, T., Sugi, Y., Arimoto, J., Umezawa, S., et al. (2019). Patients with colorectal cancer have identical strains of *fusobacterium nucleatum* in their colorectal cancer and oral cavity. *Gut* 68 (7), 1335–1337. doi: 10.1136/gutjnl-2018-316661
- Koren, O., Spor, A., Felin, J., Fak, F., Stombaugh, J., Tremaroli, V., et al. (2011). Human oral, gut, and plaque microbiota in patients with atherosclerosis. *Proc. Natl. Acad. Sci. U.S.A.* 108 Suppl 1 (Suppl 1), 4592–4598. doi: 10.1073/pnas.1011383107
- Kroese, J. M., Brandt, B. W., Buijs, M. J., Crielelaard, W., Lobbezoo, F., Loos, B. G., et al. (2021). Differences in the oral microbiome in patients with early rheumatoid arthritis and individuals at risk of rheumatoid arthritis compared to healthy individuals. *Arthritis Rheumatol* 73 (11), 1986–1993. doi: 10.1002/art.41780
- Kummen, M., Holm, K., Anmarkrud, J. A., Nygard, S., Vesterhus, M., Hovik, M. L., et al. (2017). The gut microbial profile in patients with primary sclerosing cholangitis is distinct from patients with ulcerative colitis without biliary disease and healthy controls. *Gut* 66 (4), 611–619. doi: 10.1136/gutjnl-2015-310500
- Kuraji, R., Sekino, S., Kapila, Y., and Numabe, Y. (2021). Periodontal disease-related nonalcoholic fatty liver disease and *nonalcoholic steatohepatitis*: An emerging concept of oral-liver axis. *Periodontol* 2000 87 (1), 204–240. doi: 10.1111/prd.12387
- Kwong, T. N. Y., Wang, X., Nakatsu, G., Chow, T. C., Tipoe, T., Dai, R. Z. W., et al. (2018). Association between bacteremia from specific microbes and subsequent diagnosis of colorectal cancer. *Gastroenterology* 155 (2), 383–390.e388. doi: 10.1053/j.gastro.2018.04.028
- Larabi, A., Barnich, N., and Nguyen, H. T. T. (2020). New insights into the interplay between autophagy, gut microbiota and inflammatory responses in IBD. *Autophagy* 16 (1), 38–51. doi: 10.1080/15548627.2019.1635384
- Letchumanan, G., Abdullah, N., Marlini, M., Baharom, N., Lawley, B., Omar, M. R., et al. (2022). Gut microbiota composition in prediabetes and newly diagnosed type 2 diabetes: A systematic review of observational studies. *Front. Cell Infect. Microbiol.* 12. doi: 10.3389/fcimb.2022.943427
- Li, S., Li, N., Wang, C., Zhao, Y., Cao, J., Li, X., et al. (2022). Gut microbiota and immune modulatory properties of human breast milk streptococcus salivarius and s. parasanguinis strains. *Front. Nutr.* 9. doi: 10.3389/fnut.2022.798403
- Li, J., Lu, H., Wu, H., Huang, S., Chen, L., Gui, Q., et al. (2020). Periodontitis in elderly patients with type 2 diabetes mellitus: impact on gut microbiota and systemic inflammation. *Aging (Albany NY)* 12 (24), 25956–25980. doi: 10.18632/aging.202174
- Li, Q., Peng, W., Wu, J., Wang, X., Ren, Y., Li, H., et al. (2019). Autoinducer-2 of gut microbiota, a potential novel marker for human colorectal cancer, is associated with the activation of TNFSF9 signaling in macrophages. *Oncoimmunology* 8 (10), e1626192. doi: 10.1080/2162402X.2019.1626192
- Liu, F., Ma, R., Tay, C. Y. A., Octavia, S., Lan, R., Chung, H. K. L., et al. (2018). Genomic analysis of oral campylobacter concisus strains identified a potential bacterial molecular marker associated with active crohn's disease. *Emerg. Microbes Infect.* 7 (1), 64. doi: 10.1038/s41426-018-0065-6
- Loomba, R., Ling, L., Dinh, D. M., DePaoli, A. M., Lieu, H. D., Harrison, S. A., et al. (2021). The commensal microbe veillonella as a marker for response to an FGF19 analog in NASH. *Hepatology* 73 (1), 126–143. doi: 10.1002/hep.31523
- Lourenvarsigmao, T. G. B., Spencer, S. J., Alm, E. J., and Colombo, A. P. V. (2018). Defining the gut microbiota in individuals with periodontal diseases: an exploratory study. *J. Oral. Microbiol.* 10 (1), 1487741. doi: 10.1080/20002297.2018.1487741
- Lu, H., Xu, M., Wang, F., Liu, S., Gu, J., Lin, S., et al. (2016). Chronic stress accelerates ligature-induced periodontitis by suppressing glucocorticoid receptor-alpha signaling. *Exp. Mol. Med.* 48 (3), e223. doi: 10.1038/emmm.2015.127
- Maeda, Y., and Takeda, K. (2019). Host-microbiota interactions in rheumatoid arthritis. *Exp. Mol. Med.* 51 (12), 1–6. doi: 10.1038/s12276-019-0283-6
- Ma, Q. Y., Huang, D. Y., Zhang, H. J., Wang, S., and Chen, X. F. (2017). Upregulation of bacterial-specific Th1 and Th17 responses that are enriched in CXCR5(+)/CD4(+) T cells in non-small cell lung cancer. *Int. Immunopharmacol.* 52, 305–309. doi: 10.1016/j.intimp.2017.09.024
- Maki, K. A., Kazmi, N., Barb, J. J., and Ames, N. (2021). The oral and gut bacterial microbiomes: Similarities, differences, and connections. *Biol. Res. Nurs.* 23 (1), 7–20. doi: 10.1177/1099800420941606
- McPherson, A. C., Pandey, S. P., Bender, M. J., and Meisel, M. (2021). Systemic immunoregulatory consequences of gut commensal translocation. *Trends Immunol.* 42 (2), 137–150. doi: 10.1016/j.it.2020.12.005
- Mignolet, J., Fontaine, L., Sass, A., Nannan, C., Mahillon, J., Coenye, T., et al. (2018). Circuitry rewiring directly couples competence to predation in the gut dweller *streptococcus salivarius*. *Cell Rep.* 22 (7), 1627–1638. doi: 10.1016/j.celrep.2018.01.055
- Moskovitz, M., Nassar, M., Moriel, N., Cher, A., Faibis, S., Ram, D., et al. (2021). Characterization of the oral microbiome among children with type 1 diabetes compared with healthy children. *Front. Microbiol.* 12. doi: 10.3389/fmicb.2021.756808
- Nagao, J. I., Kishikawa, S., Tanaka, H., Toyonaga, K., Narita, Y., Negoro-Yasumatsu, K., et al. (2022). Pathobiont-responsive Th17 cells in gut-mouth axis provoke inflammatory oral disease and are modulated by intestinal microbiome. *Cell Rep.* 40 (10), 111314. doi: 10.1016/j.celrep.2022.111314
- Nagata, N., Nishijima, S., Kojima, Y., Hisada, Y., Imbe, K., Miyoshi-Akiyama, T., et al. (2022). Metagenomic identification of microbial signatures predicting pancreatic cancer from a multinational study. *Gastroenterology* 163 (1), 222–238. doi: 10.1053/j.gastro.2022.03.054
- Nakajima, M., Arimatsu, K., Kato, T., Matsuda, Y., Minagawa, T., Takahashi, N., et al. (2015). Oral administration of p. gingivalis induces dysbiosis of gut microbiota and impaired barrier function leading to dissemination of enterobacteria to the liver. *PLoS One* 10 (7), e0134234. doi: 10.1371/journal.pone.0134234
- Nakatsu, G., Zhou, H., Wu, W. K. K., Wong, S. H., Coker, O. O., Dai, Z., et al. (2018). Alterations in enteric virome are associated with colorectal cancer and survival outcomes. *Gastroenterology* 155 (2), 529–541.e525. doi: 10.1053/j.gastro.2018.04.018
- Nishimura, H., Fukui, H., Wang, X., Ebisutani, N., Nakanishi, T., Tomita, T., et al. (2021). Role of the beta-Catenin/REG alpha axis in the proliferation of sessile serrated Adenoma/Polyps associated with fusobacterium nucleatum. *Pathogens* 10 (4), 434. doi: 10.3390/pathogens10040434
- Ohtsu, A., Takeuchi, Y., Katagiri, S., Suda, W., Maekawa, S., Shiba, T., et al. (2019). Influence of porphyromonas gingivalis in gut microbiota of streptozotocin-induced diabetic mice. *Oral. Dis.* 25 (3), 868–880. doi: 10.1111/odi.13044
- Olsen, I., and Yamazaki, K. (2019). Can oral bacteria affect the microbiome of the gut? *J. Oral. Microbiol.* 11 (1), 1586422. doi: 10.1080/20002297.2019.1586422
- Osman, M. A., Neoh, H. M., Ab Mutalib, N. S., Chin, S. F., Mazlan, L., Raja Ali, R. A., et al. (2021). *Parvimonas micra*, *peptostreptococcus stomatis*, *fusobacterium nucleatum* and *akkermansia muciniphila* as a four-bacteria biomarker panel of colorectal cancer. *Sci. Rep.* 11 (1), 2925. doi: 10.1038/s41598-021-82465-0
- Panpetch, W., Hiengrach, P., Nilgate, S., Tumwasorn, S., Somboonna, N., Wilantho, A., et al. (2020). Additional candida albicans administration enhances the severity of dextran sulfate solution induced colitis mouse model through leaky gut-enhanced systemic inflammation and gut-dysbiosis but attenuated by lactobacillus rhamnosus L34. *Gut Microbes* 11 (3), 465–480. doi: 10.1080/19490976.2019.1662712
- Panpetch, W., Somboonna, N., Palasuk, M., Hiengrach, P., Finkelman, M., Tumwasorn, S., et al. (2019). Oral candida administration in a clostridium difficile mouse model worsens disease severity but is attenuated by bifidobacterium. *PLoS One* 14 (1), e0210798. doi: 10.1371/journal.pone.0210798
- Park, S. Y., Hwang, B. O., Lim, M., Ok, S. H., Lee, S. K., Chun, K. S., et al. (2021). Oral-gut microbiome axis in gastrointestinal disease and cancer. *Cancers (Basel)* 13 (9), 2124. doi: 10.3390/cancers13092124
- Petrick, J. L., Wilkinson, J. E., Michaud, D. S., Cai, Q., Gerlovin, H., Signorello, L. B., et al. (2022). The oral microbiome in relation to pancreatic cancer risk in African americans. *Br. J. Cancer* 126 (2), 287–296. doi: 10.1038/s41416-021-01578-5
- Ponath, F., Tawk, C., Zhu, Y., Barquist, L., Faber, F., and Vogel, J. (2021). RNA Landscape of the emerging cancer-associated microbe fusobacterium nucleatum. *Nat. Microbiol.* 6 (8), 1007–1020. doi: 10.1038/s41564-021-00927-7
- Prasoodanan, P. K. V., Sharma, A. K., Mahajan, S., Dhakan, D. B., Maji, A., Scaria, J., et al. (2021). Western And non-western gut microbiomes reveal new roles of prevotella in carbohydrate metabolism and mouth-gut axis. *NPJ Biofilms Microbiomes* 7 (1), 77. doi: 10.1038/s41522-021-00248-x

- Prieto, D., Carpena, N., Maneu, V., Gil, M. L., Pla, J., and Gozalbo, D. (2016). TLR2 modulates gut colonization and dissemination of candida albicans in a murine model. *Microbes Infect.* 18 (10), 656–660. doi: 10.1016/j.micinf.2016.05.005
- Priya, S., Burns, M. B., Ward, T., Mars, R. A. T., Adamowicz, B., Lock, E. F., et al. (2022). Identification of shared and disease-specific host gene-microbiome associations across human diseases using multi-omic integration. *Nat. Microbiol.* 7 (6), 780–795. doi: 10.1038/s41564-022-01121-z
- Qi, Y., Wu, H. M., Yang, Z., Zhou, Y. F., Jin, L., Yang, M. F., et al. (2022). New insights into the role of oral microbiota dysbiosis in the pathogenesis of inflammatory bowel disease. *Dig Dis. Sci.* 67 (1), 42–55. doi: 10.1007/s10620-021-06837-2
- Raimondi, S., Amaretti, A., Gozzoli, C., Simone, M., Righini, L., Candelieri, F., et al. (2019). Longitudinal survey of fungi in the human gut: ITS profiling, phenotyping, and colonization. *Front. Microbiol.* 10. doi: 10.3389/fmicb.2019.01575
- Rampelli, S., Fabbri, M., Candela, M., Biagi, E., Brigidi, P., and Turroni, S. (2021). G2S: A new deep learning tool for predicting stool microbiome structure from oral microbiome data. *Front. Genet.* 12. doi: 10.3389/fgene.2021.644516
- Rashidi, A., Ebadi, M., Weisdorf, D. J., Costalonga, M., and Staley, C. (2021). No evidence for colonization of oral bacteria in the distal gut in healthy adults. *Proc. Natl. Acad. Sci. U.S.A.* 118 (42), e2114152118. doi: 10.1073/pnas.2114152118
- Rengarajan, S., Vivio, E. E., Parkes, M., Peterson, D. A., Roberson, E. D. O., Newberry, R. D., et al. (2020). Dynamic immunoglobulin responses to gut bacteria during inflammatory bowel disease. *Gut Microbes* 11 (3), 405–420. doi: 10.1080/19490976.2019.1626683
- Richardson, M., Ren, J., Rubinstein, M. R., Taylor, J. A., Friedman, R. A., Shen, B., et al. (2020). Analysis of 16S rRNA genes reveals reduced fusobacterial community diversity when translocating from saliva to GI sites. *Gut Microbes* 12 (1), 1–13. doi: 10.1080/19490976.2020.1814120
- Rubinstein, M. R., Wang, X., Liu, W., Hao, Y., Cai, G., and Han, Y. W. (2013). Fusobacterium nucleatum promotes colorectal carcinogenesis by modulating e-cadherin/beta-catenin signaling via its FadA adhesin. *Cell Host Microbe* 14 (2), 195–206. doi: 10.1016/j.chom.2013.07.012
- Ruhlemann, M., Liwinski, T., Heinsen, F. A., Bang, C., Zenouzi, R., Kummen, M., et al. (2019). Consistent alterations in faecal microbiomes of patients with primary sclerosing cholangitis independent of associated colitis. *Aliment Pharmacol. Ther.* 50 (5), 580–589. doi: 10.1111/apt.15375
- Saboo, K., Petrakov, N. V., Shamsaddini, A., Fagan, A., Gavis, E. A., Sikaroodi, M., et al. (2022). Stool microbiomes are superior to saliva in distinguishing cirrhosis and hepatic encephalopathy using machine learning. *J. Hepatol.* 76 (3), 600–607. doi: 10.1016/j.jhep.2021.11.011
- Sato, K., Takahashi, N., Kato, T., Matsuda, Y., Yokoji, M., Yamada, M., et al. (2017). Aggravation of collagen-induced arthritis by orally administered porphyromonas gingivalis through modulation of the gut microbiota and gut immune system. *Sci. Rep.* 7 (1), 6955. doi: 10.1038/s41598-017-07196-7
- Schmidt, T. S., Hayward, M. R., Coelho, L. P., Li, S. S., Costea, P. I., Voigt, A. Y., et al. (2019). Extensive transmission of microbes along the gastrointestinal tract. *Elife* 8, e42693. doi: 10.7554/eLife.42693
- Sender, R., Fuchs, S., and Milo, R. (2016). Revised estimates for the number of human and bacteria cells in the body. *PLoS Biol.* 14 (8), e1002533. doi: 10.1371/journal.pbio.1002533
- Sequeira, R. P., McDonald, J. A. K., Marchesi, J. R., and Clarke, T. B. (2020). Commensal bacteroidetes protect against klebsiella pneumoniae colonization and transmission through IL-36 signalling. *Nat. Microbiol.* 5 (2), 304–313. doi: 10.1038/s41564-019-0640-1
- Song, W., Sun, L. Y., Zhu, Z. J., Wei, L., Qu, W., Zeng, Z. G., et al. (2021). Association of gut microbiota and metabolites with disease progression in children with biliary atresia. *Front. Immunol.* 12. doi: 10.3389/fimmu.2021.698900
- Stanisic, D., Jovanovic, M., George, A. K., Homme, R. P., Tyagi, N., Singh, M., et al. (2021). Gut microbiota and the periodontal disease: role of hyperhomocysteinemia. *Can. J. Physiol. Pharmacol.* 99 (1), 9–17. doi: 10.1139/cjpp-2020-0215
- Superdock, D., and Poole, A. (2022). Processing method affects oral and gut microbiome composition. *Curr. Developments Nutr.* 6 (Supplement\_1), 779–779. doi: 10.1093/cdn/nzac063.021
- Tang, X., Tangkham, T., Aljadhali, B., Lee, S., Su, M., and Dibart, S. (2021). The role of TNF-alpha induced protein 1 in the activation of pro-apoptotic proteins. *Hum. Cell* 34 (4), 1123–1129. doi: 10.1007/s13577-021-00529-9
- Tan, Q., Ma, X., Yang, B., Liu, Y., Xie, Y., Wang, X., et al. (2022). Periodontitis pathogen porphyromonas gingivalis promotes pancreatic tumorigenesis via neutrophil elastase from tumor-associated neutrophils. *Gut Microbes* 14 (1), 2073785. doi: 10.1080/19490976.2022.2073785
- Tran, H. N. H., Hoang, Th. T. N., Nguyen, P. H., Vo, C. N., Van Doan, K., Ngoc Minh, C. N., et al. (2022). Mucosal microbiomes and fusobacterium genomics in Vietnamese colorectal cancer patients. *J. bioRxiv* 8 (1), 87. doi: 10.1101/2022.02.25.481918. 2022.2022.02.25.481918.
- Tripathi, A., Nahar, A., Sharma, R., Kanaskie, T., Al-Hebshi, N., and Puri, S. (2022). High iron-mediated increased oral fungal burden, oral-to-gut transmission, and changes to pathogenicity of candida albicans in oropharyngeal candidiasis. *J. Oral Microbiol.* 14 (1), 2044110. doi: 10.1080/20002297.2022.2044110
- Tsuzuno, T., Takahashi, N., Yamada-Hara, M., Yokoji-Takeuchi, M., Sulijaya, B., Aoki-Nonaka, Y., et al. (2021). Ingestion of porphyromonas gingivalis exacerbates colitis via intestinal epithelial barrier disruption in mice. *J. Periodontol. Res.* 56 (2), 275–288. doi: 10.1111/jre.12816
- Vaishnav, S., Behrendt, C. L., Ismail, A. S., Eckmann, L., and Hooper, L. V. (2008). Paneth cells directly sense gut commensals and maintain homeostasis at the intestinal host-microbial interface. *Proc. Natl. Acad. Sci. U.S.A.* 105 (52), 20858–20863. doi: 10.1073/pnas.0808723105
- van Leeuwen, P. T., van der Peet, J. M., Bikker, F. J., Hoogenkamp, M. A., Oliveira Paiva, A. M., Kostidis, S., et al. (2016). Interspecies interactions between clostridium difficile and candida albicans. *mSphere* 1 (6), e00187-16. doi: 10.1128/mSphere.00187-16
- Vasapolli, R., Schutte, K., Schulz, C., Vital, M., Schomburg, D., Pieper, D. H., et al. (2019). Analysis of transcriptionally active bacteria throughout the gastrointestinal tract of healthy individuals. *Gastroenterology* 157 (4), 1081–1092 e1083. doi: 10.1053/j.gastro.2019.05.068
- Velsko, I. M., Chukkappalli, S. S., Rivera-Kweh, M. F., Chen, H., Zheng, D., Bhattacharyya, L., et al. (2015). Fusobacterium nucleatum alters atherosclerosis risk factors and enhances inflammatory markers with an atheroprotective immune response in ApoE(null) mice. *PLoS One* 10 (6), e0129795. doi: 10.1371/journal.pone.0129795
- Walencik, P. K. (2022). The redox-active Cu-FomA complex: the mode that provides coordination of Cu(II)/Cu(I) ions during the reduction/oxidation cycle. *Dalton Trans.* 51 (40), 15515–15529. doi: 10.1039/d2dt02398a
- Wang, T., Ishikawa, T., Sasaki, M., and Chiba, T. (2022). Oral and gut microbial dysbiosis and non-alcoholic fatty liver disease: The central role of porphyromonas gingivalis. *Front. Med. (Lausanne)* 9. doi: 10.3389/fmed.2022.822190
- Wang, X., Jia, Y., Wen, L., Mu, W., Wu, X., Liu, T., et al. (2021a). Porphyromonas gingivalis promotes colorectal carcinoma by activating the hematopoietic NLRP3 inflammasome. *Cancer Res.* 81 (10), 2745–2759. doi: 10.1158/0008-5472.CAN-20-3827
- Wang, Y., Zhang, Y., Qian, Y., Xie, Y. H., Jiang, S. S., Kang, Z. R., et al. (2021b). Alterations in the oral and gut microbiome of colorectal cancer patients and association with host clinical factors. *Int. J. Cancer.* doi: 10.1002/ijc.33596
- Wei, F., Sun, X., Gao, Y., Dou, H., Liu, Y., Su, L., et al. (2021). Is oral microbiome of children able to maintain resistance and functional stability in response to short-term interference of ingesta? *Protein Cell* 12 (6), 502–510. doi: 10.1007/s13238-020-00774-y
- Wirbel, J., Pyl, P. T., Kartal, E., Zych, K., Kashani, A., Milanese, A., et al. (2019). Meta-analysis of fecal metagenomes reveals global microbial signatures that are specific for colorectal cancer. *Nat. Med.* 25 (4), 679–689. doi: 10.1038/s41591-019-0406-6
- Wu, T., Xu, F., Su, C., Li, H., Lv, N., Liu, Y., et al. (2020). Alterations in the gut microbiome and cecal metabolome during klebsiella pneumoniae-induced pneumosepsis. *Front. Immunol.* 11. doi: 10.3389/fimmu.2020.011331
- Wu, F., Yang, L., Hao, Y., Zhou, B., Hu, J., Yang, Y., et al. (2022). Oral and gastric microbiome in relation to gastric intestinal metaplasia. *Int. J. Cancer* 150 (6), 928–940. doi: 10.1002/ijc.33848
- Xiao, Q., Lu, W., Kong, X., Shao, Y. W., Hu, Y., Wang, A., et al. (2021). Alterations of circulating bacterial DNA in colorectal cancer and adenoma: A proof-of-concept study. *Cancer Lett.* 499, 201–208. doi: 10.1016/j.canlet.2020.11.030
- Xia, B., Yang, M., Nguyen, L. H., He, Q., Zhen, J., Yu, Y., et al. (2021). Regular use of proton pump inhibitor and the risk of inflammatory bowel disease: Pooled analysis of 3 prospective cohorts. *Gastroenterology* 161 (6), 1842–1852.e1810. doi: 10.1053/j.gastro.2021.08.005
- Xue, Y., Xiao, H., Guo, S., Xu, B., Liao, Y., Wu, Y., et al. (2018). Indoleamine 2,3-dioxygenase expression regulates the survival and proliferation of fusobacterium nucleatum in THP-1-derived macrophages. *Cell Death Dis.* 9 (3), 355. doi: 10.1038/s41419-018-0389-0
- Xun, Z., Zhang, Q., Xu, T., Chen, N., and Chen, F. (2018). Dysbiosis and ecotypes of the salivary microbiome associated with inflammatory bowel diseases and the assistance in diagnosis of diseases using oral bacterial profiles. *Front. Microbiol.* 9. doi: 10.3389/fmicb.2018.01136
- Yamazaki, K., Kato, T., Tsuboi, Y., Miyauchi, E., Suda, W., Sato, K., et al. (2021). Oral pathobiont-induced changes in gut microbiota aggravate the pathology of nonalcoholic fatty liver disease in mice. *Front. Immunol.* 12. doi: 10.3389/fimmu.2021.766170
- Yao, C., Lan, D., Li, X., Wang, Y., Qi, S., and Liu, Y. (2022). Porphyromonas gingivalis is a risk factor for the development of nonalcoholic fatty liver disease via ferroptosis. *Microbes Infect.* 25 (1-2), 105040. doi: 10.1016/j.micinf.2022.105040
- Yonezawa, H., Motegi, M., Oishi, A., Hojo, F., Higashi, S., Nozaki, E., et al. (2021). Lantibiotics produced by oral inhabitants as a trigger for dysbiosis of human intestinal microbiota. *Int. J. Mol. Sci.* 22 (7), 3343. doi: 10.3390/ijms22073343
- Yoshihara, T., Kioi, M., Baba, J., Usuda, H., Kessoku, T., Iwaki, M., et al. (2021). A prospective interventional trial on the effect of periodontal treatment on fusobacterium nucleatum abundance in patients with colorectal tumours. *Sci. Rep.* 11 (1), 23719. doi: 10.1038/s41598-021-03083-4
- Young, T. M., Bray, A. S., Nagpal, R. K., Caudell, D. L., Yadav, H., and Zafar, M. A. (2020). Animal model to study klebsiella pneumoniae gastrointestinal colonization and host-to-Host transmission. *Infect. Immun.* 88 (11), e00071-20. doi: 10.1128/IAI.00071-20
- Yu, J., Feng, Q., Wong, S. H., Zhang, D., Liang, Q. Y., Qin, Y., et al. (2017). Metagenomic analysis of faecal microbiome as a tool towards targeted non-invasive biomarkers for colorectal cancer. *Gut* 66 (1), 70–78. doi: 10.1136/gutjnl-2015-309800
- Zhang, J., Xie, M., Huang, X., Chen, G., Yin, Y., Lu, X., et al. (2021). The effects of porphyromonas gingivalis on atherosclerosis-related cells. *Front. Immunol.* 12. doi: 10.3389/fimmu.2021.766560
- Zhao, L., Cho, W. C., and Nicolls, M. R. (2021). Colorectal cancer-associated microbiome patterns and signatures. *Front. Genet.* 12. doi: 10.3389/fgene.2021.787176
- Zheng, X., Liu, R., Zhou, C., Yu, H., Luo, W., Zhu, J., et al. (2021). ANGPTL4-mediated promotion of glycolysis facilitates the colonization of fusobacterium nucleatum in colorectal cancer. *Cancer Res.* 81 (24), 6157–6170. doi: 10.1158/0008-5472.CAN-21-2273