



OPEN ACCESS

EDITED AND REVIEWED BY

Serge Ankri,
Technion Israel Institute of
Technology, Israel

*CORRESPONDENCE

Elisa Azuara-Liceaga
elisa.azuara@uacm.edu.mx
Luis G. Briebe
luis.briebe@cinvestav.mx

†PRESENT ADDRESSES

Cesar S. Cardona-Felix,
Centro Interdisciplinario de Ciencias
Marinas de Instituto Politécnico
Nacional, La Paz, Mexico
Guillermo Pastor-Palacios,
División de Biología Molecular,
Instituto Potosino de Investigación
Científica y Tecnológica, San Luis
Potosí, Mexico

SPECIALTY SECTION

This article was submitted to
Parasite and Host,
a section of the journal
Frontiers in Cellular and
Infection Microbiology

RECEIVED 19 August 2022

ACCEPTED 26 September 2022

PUBLISHED 16 December 2022

CITATION

Azuara-Liceaga E, Betanzos A,
Cardona-Felix CS, Castañeda-Ortiz EJ,
Cárdenas H, Cárdenas-Guerra RE,
Pastor-Palacios G, García-Rivera G,
Hernández-Álvarez D,
Trasviña-Arenas CH, Diaz-Quezada C,
Orozco E and Briebe LG (2022)
Corrigendum: The sole DNA
ligase in *Entamoeba histolytica*
is a high-fidelity DNA ligase
involved in DNA damage repair.
Front. Cell. Infect. Microbiol.
12:1023564.
doi: 10.3389/fcimb.2022.1023564

Corrigendum: The sole DNA ligase in *Entamoeba histolytica* is a high-fidelity DNA ligase involved in DNA damage repair

Elisa Azuara-Liceaga^{1*}, Abigail Betanzos^{2,3},
Cesar S. Cardona-Felix^{2,4†},
Elizabeth J. Castañeda-Ortiz¹, Helios Cárdenas¹,
Rosa E. Cárdenas-Guerra¹, Guillermo Pastor-Palacios^{4†},
Guillermina García-Rivera³, David Hernández-Álvarez¹,
Carlos H. Trasviña-Arenas⁴, Corina Diaz-Quezada⁴,
Esther Orozco³ and Luis G. Briebe^{4*}

¹Posgrado en Ciencias Genómicas, Universidad Autónoma de la Ciudad de México, Mexico City, Mexico, ²Consejo Nacional de Ciencia y Tecnología, Mexico City, Mexico, ³Departamento de Infectómica y Patogénesis Molecular, Centro de Investigación y de Estudios Avanzados del Instituto Politécnico Nacional, Mexico City, Mexico, ⁴Laboratorio Nacional de Genómica para la Biodiversidad, Centro de Investigación y de Estudios Avanzados, Irapuato, Mexico

KEYWORDS

EhDNAligI, protozoan, DNA insults, ligation, repairing, 8-oxoG adduct, NER and BER pathways

A Corrigendum on

The sole DNA ligase in *Entamoeba histolytica* is a high-fidelity DNA ligase involved in DNA damage repair

By Azuara-Liceaga E, Betanzos A, Cardona-Felix CS, Castañeda-Ortiz EJ, Cárdenas H, Cárdenas-Guerra RE, Pastor-Palacios G, García-Rivera G, Hernández-Álvarez D, Trasviña-Arenas CH, Diaz-Quezada C, Orozco E and Briebe LG (2018) *Front. Cell. Infect. Microbiol.* 8:214. doi: 10.3389/fcimb.2018.00214

Error in Figure/Table

In the published article, there was an error in **FIGURE 1B**. Assessment of rEhDNAligI fidelity on nicked double stranded DNA mismatches, as published. In **FIGURE 1B**, part of the figure that corresponds to lanes 10 to 18 (G:T mismatch) was accidentally duplicated in the part of the figure that corresponds to the A:T pair (lanes 19 to 26). The corrected **FIGURE 1B** and its caption appear below.

The authors apologize for this error and state that this does not change the scientific conclusions of the article in any way. The original article has been updated.

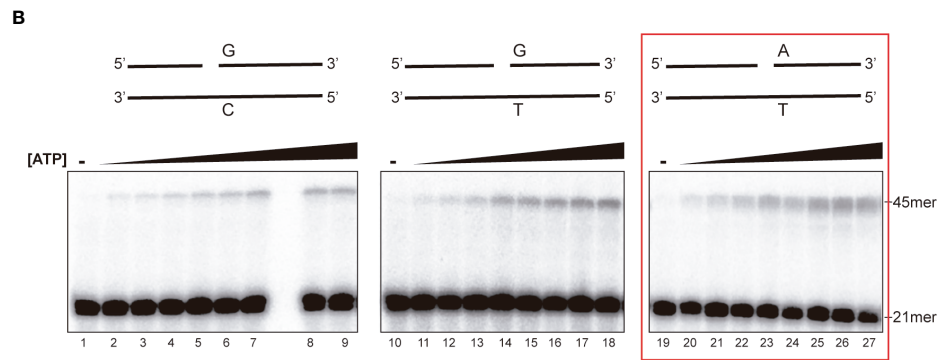


FIGURE 1B
 Steady-state kinetics of EhDNAligI on the G:T mismatch at different concentrations of ATP. Lanes 1–9 show EhDNAligI activity at different ATP concentrations in comparison to canonical G:C substrate, lanes 10–18 monitored ligase activity with a mismatched G:T substrate, lanes 19–27 indicate activity with the canonical A:T substrate. The 21mer substrate and the 45mer ligation products are marked with arrows.

Publisher’s note

All claims expressed in this article are solely those of the authors and do not necessarily represent those of their affiliated

organizations, or those of the publisher, the editors and the reviewers. Any product that may be evaluated in this article, or claim that may be made by its manufacturer, is not guaranteed or endorsed by the publisher.