



***Galleria mellonella* as a Novelty *in vivo* Model of Host-Pathogen Interaction for *Malassezia furfur* CBS 1878 and *Malassezia pachydermatis* CBS 1879**

Maritza Torres¹, Elkin Nicolás Pinzón¹, Flor María Rey¹, Heydys Martínez¹, Claudia Marcela Parra Giraldo² and Adriana Marcela Celis Ramírez^{1*}

¹ Grupo de Investigación Celular y Molecular de Microorganismos Patógenos (CeMoP), Departamento de Ciencias Biológicas, Universidad de los Andes, Bogotá, Colombia, ² Unidad de Investigación en Proteómica y Micosis Humanas, Grupo de Enfermedades Infecciosas, Departamento de Microbiología, Facultad de Ciencias, Pontificia Universidad Javeriana, Bogotá, Colombia

OPEN ACCESS

Edited by:

Martin Hoenigl,
Medical University of Graz, Austria

Reviewed by:

Claudia Cafarchia,
University of Bari Aldo Moro, Italy
Liliana Scorzoni,
São Paulo State University, Brazil

*Correspondence:

Adriana Marcela Celis Ramírez
acelis@uniandes.edu.co

Specialty section:

This article was submitted to
Fungal Pathogenesis,
a section of the journal
Frontiers in Cellular and Infection
Microbiology

Received: 26 February 2020

Accepted: 15 April 2020

Published: 05 May 2020

Citation:

Torres M, Pinzón EN, Rey FM, Martínez H, Parra Giraldo CM and Celis Ramírez AM (2020) *Galleria mellonella* as a Novelty *in vivo* Model of Host-Pathogen Interaction for *Malassezia furfur* CBS 1878 and *Malassezia pachydermatis* CBS 1879. *Front. Cell. Infect. Microbiol.* 10:199. doi: 10.3389/fcimb.2020.00199

Malassezia furfur and *Malassezia pachydermatis* are lipophilic and lipid dependent yeasts, associated with the skin microbiota in humans and domestic animals, respectively. Although they are commensals, under specific conditions they become pathogens, causing skin conditions, such as pityriasis versicolor, dandruff/seborrheic dermatitis, folliculitis in humans, and dermatitis and otitis in dogs. Additionally, these species are associated with fungemia in immunocompromised patients and low-weight neonates in intensive care units with intravenous catheters or with parenteral nutrition and that are under-treatment of broad-spectrum antibiotics. The host-pathogen interaction mechanism in these yeasts is still unclear; for this reason, it is necessary to implement suitable new host systems, such as *Galleria mellonella*. This infection model has been widely used to assess virulence, host-pathogen interaction, and antimicrobial activity in bacteria and fungi. Some advantages of the *G. mellonella* model are: (1) the immune response has phagocytic cells and antimicrobial peptides that are similar to those in the innate immune response of human beings; (2) no ethical implications; (3) low cost; and (4) easy to handle and inoculate. This study aims to establish *G. mellonella* as an *in vivo* infection model for *M. furfur* and *M. pachydermatis*. To achieve this objective, first, *G. mellonella* larvae were first inoculated with different inoculum concentrations of these two *Malassezia* species, 1.5×10^6 CFU/mL, 1.5×10^7 CFU/mL, 1.5×10^8 CFU/mL, and 11.5×10^9 CFU/mL, and incubated at 33 and 37°C. Then, for 15 days, the mortality and melanization were evaluated daily. Finally, the characterization of hemocytes and fungal burden assessment were as carried out. It was found that at 33 and 37°C both *M. furfur* and *M. pachydermatis* successfully established a systemic infection in *G. mellonella*. *M. pachydermatis* proved to be slightly more virulent than *M. furfur* at a temperature of 37°C.

The results suggest that larvae mortality and melanization is dependent on the specie of *Malassezia*, the inoculum concentration and the temperature. According to the findings, *G. mellonella* can be used as an *in vivo* model of infection to conduct easy and reliable approaches to boost our knowledge of the *Malassezia* genus.

Keywords: *Galleria mellonella*, *Malassezia furfur*, *Malassezia pachydermatis*, infection model, host-pathogen interaction

INTRODUCTION

The genus *Malassezia* is comprised of 18 lipophilic species characterized as commensal yeasts, which are part of the skin mycobiota of both humans and animals (Nagata et al., 2012; Cabañes, 2014; Cabañes et al., 2016; Honnavar et al., 2016; Prohic et al., 2016), and are commonly located in lipid-rich body areas, such as the scalp, face, and trunk (Gupta et al., 2004; DeAngelis et al., 2005). Some species of this genus have been associated with skin diseases (Gupta et al., 2004; Prohic et al., 2016) and systemic infections (Gaitanis et al., 2012; Kaneko et al., 2012; Nagata et al., 2012; Iatta et al., 2014, 2018; Roman et al., 2016; Lee et al., 2018; Theelen et al., 2018; Chen et al., 2020).

Malassezia furfur and *Malassezia pachydermatis* are two representative species of this genus which are found mainly in the skin of humans and pets such as dogs and cats, respectively (Cabañes, 2014). These two species have been associated with systemic infections in premature infants (Zomorodain et al., 2008; Iatta et al., 2014, 2018) as well as in low-weight infants with central venous catheters (CVC), parenteral lipid infusions and long hospital stays (Bell et al., 1988; Chang et al., 1998; Gupta et al., 2014). The two species have also been shown to infect immunosuppressed children and adults (Gaitanis et al., 2012; Kaneko et al., 2012; Roman et al., 2016); in fact, in some cases the percentage of fungemia by *M. furfur* (2.1%) is higher than fungemia by *Candida* spp. (1.4%) (Iatta et al., 2014), and prevalence can range from 2.1 to 4.4% in a neonatal intensive care unit depending on the diagnostic method (Iatta et al., 2018).

The skin colonization of neonates is the first step for the subsequent systemic invasion (Zomorodain et al., 2008; Iatta et al., 2014), a process that is not yet clear, and it has been reported that this may be facilitated by lipid infusion (Tragiannidis et al., 2010). This colonization has been reported from day zero to day 1 of life (Nagata et al., 2012), and it has been associated with transmission from the mother (Zomorodain et al., 2008; Nagata et al., 2012; Paul et al., 2019), healthcare personnel with pets (Chang et al., 1998), poor hygiene practices by healthcare personnel (handwashing before and after having contact with patients) leading to patient-patient transmission (Chang et al., 1998; Gaitanis et al., 2012), and persistence of *M. pachydermatis* yeasts in incubators and sheets (Iatta et al., 2014). Additionally, using fluconazole to prevent *Candida* spp. infections promotes colonization of resistant *M. furfur* (Chen et al., 2020).

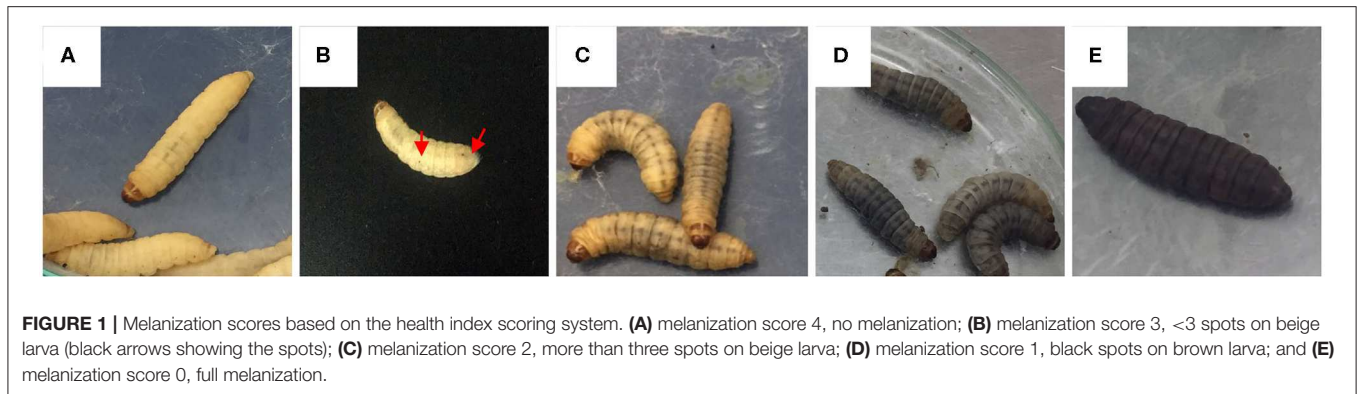
Owing to the increase in the number of cases of *M. furfur* and *M. pachydermatis* systemic infections and the lack of knowledge of the infection mechanism, it is important to study the process of the systemic infection *in-vivo*. For this purpose, it is necessary to implement infection animal models. Different models have been

used for the study of fungal diseases, such as zebrafish, chickens, mice, guinea pigs, dogs, and rabbits (McGinnis and Borgers, 1989; Capilla et al., 2007; Rosowski et al., 2018; Schlemmer et al., 2018; Sparber et al., 2019). These animal models have advantages such as the fact that they mimic human infectious diseases; however, their disadvantages are that they have high requirements for their maintenance, handling, space, and ethical considerations, which are the reasons as to why it is pivotal to implement alternatives (Capilla et al., 2007).

Among the alternatives are invertebrate organisms, such as *Drosophila melanogaster* used as a model for the study of *M. pachydermatis* infection (Merkel et al., 2018), *Caenorhabditis elegans* as an infection model of *Cryptococcus neoformans* (Capilla et al., 2007) and *Galleria mellonella*, which is widely used as a bacterial (Loh et al., 2013; Lacharme-Lora et al., 2019) and fungal infection model (Eisenman et al., 2014; Amorim-Vaz et al., 2015; Kloezen et al., 2015; Wuensch et al., 2018; Maurer et al., 2019; Sheehan and Kavanagh, 2019). One of the main features of *Galleria mellonella* that makes it a good model of mycosis are the phagocytic cells, which are the first line of defense against fungal infections (Trevijano-Contador and Zaragoza, 2019).

One of the advantages of using *G. mellonella* larvae as a model of host-pathogen interaction is the versatility of methods of inoculation, which can be topical (Scully and Bidochka, 2005), oral (Freitak et al., 2014) or the most common, microinjection (Eisenman et al., 2014; Amorim-Vaz et al., 2015; Kloezen et al., 2015; Wuensch et al., 2018; Sheehan and Kavanagh, 2019). Some other advantages include the feasibility of handling larvae due to their size, the fact that it is not necessary to feed them since they stop feeding in the fifth instar when experiments start (Singkum et al., 2019), the exclusion of ethical implications like those used in mammalian models, the ease of following-up on the progress of infection due to the use of standardized health scores (Champion et al., 2018), and the good antifungal immune response that includes cellular and humoral components (Kay et al., 2019; Trevijano-Contador and Zaragoza, 2019).

Due to the aforementioned factors, *G. mellonella* is an attractive *in-vivo* model of host-pathogen interaction that has been widely used in the evaluation of the host-pathogen interaction of yeasts such as *Candida* and *Cryptococcus*, but there are no reports, so far, on the use of *G. mellonella* as an infection model for *M. furfur* or *M. pachydermatis*. Therefore, the objective of this study is to establish *G. mellonella* as an infection model for *M. furfur* and *M. pachydermatis*, which will allow other mycologists to use this model in future studies. In this work, the survival of *G. mellonella* inoculated with different inoculum concentrations of *M. furfur* and *M. pachydermatis* was evaluated, and also the progress of the infection was



followed by monitoring the melanization of the larvae and histological samples.

MATERIALS AND METHODS

Fungal Strains and Inoculum Preparation

Strains of *M. furfur* CBS 1878 and *M. pachydermatis* CBS 1879 (Westerdijk institute, Utrecht, The Netherlands) were used. The strains were cultured for 72 h in the modified Dixon (mDixon) agar (36 g L⁻¹ mycosel agar [BD, USA], 20 g L⁻¹ Oxgall [BD, USA], 36 g L⁻¹ malt extract [Oxoid, UK], 2 mL L⁻¹ glycerol [Sigma Aldrich, USA], 2 mL L⁻¹ oleic acid [Sigma Aldrich, USA], and 10 mL L⁻¹ Tween 40 [Sigma Aldrich, USA]) at 33°C. The inoculum was prepared with 5 mL of 0.5% Tween 80 [Sigma Aldrich, USA]. Then it was filtered and cells were counted in a Neubauer chamber to reach desirable inoculum concentrations: 1.5 × 10⁶ CFU/mL, 1.5 × 10⁷ CFU/mL, 1.5 × 10⁸ CFU/mL, and 1.5 × 10⁹ CFU/mL.

Survival and Melanization Assay

Killing assays were performed in *G. mellonella* as previously described (Stephens, 1962; Fallon et al., 2012). Briefly, the larvae in late stages (fifth and sixth instar) were obtained from Perkins LTDA (Palmira, Colombia). Once the larvae arrived, they were kept at room temperature for 24 h, in that order, they could recover until challenge assay; then, in continuous movement, the larvae were decontaminated in 0.1% sodium hypochlorite for 30 s and rinsed in two different containers with sterile distilled water, in the first recipient for 30 s and the second recipient for 10 s. Larvae with a weight between 250 and 330 mg and a size of ~2 cm were selected and sorted in five different treatment groups of fifteen larvae, avoiding those with any kind of mark. Insulin syringes (BD Veo insulin syringe with the BD Ultra-Fine 6 mm needle) were used to microinject the larvae, holding them between the fingers, allowing the needle to insert at the last left proleg to deliver the inoculum directly into the hemocoel. Fifteen larvae for each treatment were inoculated with 20 μL of 0.5% Tween 80 as a negative control, and four inoculum concentrations (range 1.5 × 10⁶-1.5 × 10⁹ CFU/mL). Additionally, fifteen larvae were used as absolute control; these larvae were kept in the same conditions as the other five groups, but without any intervention to evaluate each lot of larvae that

was received. After that, larvae were incubated at 33 and 37°C in darkness. Every 24 h during a 15 days period, larval silk was removed and the insects' death and melanization were recorded (Amorim-Vaz et al., 2015; Maurer et al., 2019). Larvae were scored as dead when they did not respond to a mechanical stimulus (Eisenman et al., 2014; Cools et al., 2019). Melanization was scored according to a modified health index scoring system (Figure 1) (Loh et al., 2013; Tsai et al., 2016; Champion et al., 2018; Kay et al., 2019). To compare mortality, three biological replicates were performed.

Characterization of Hemocytes

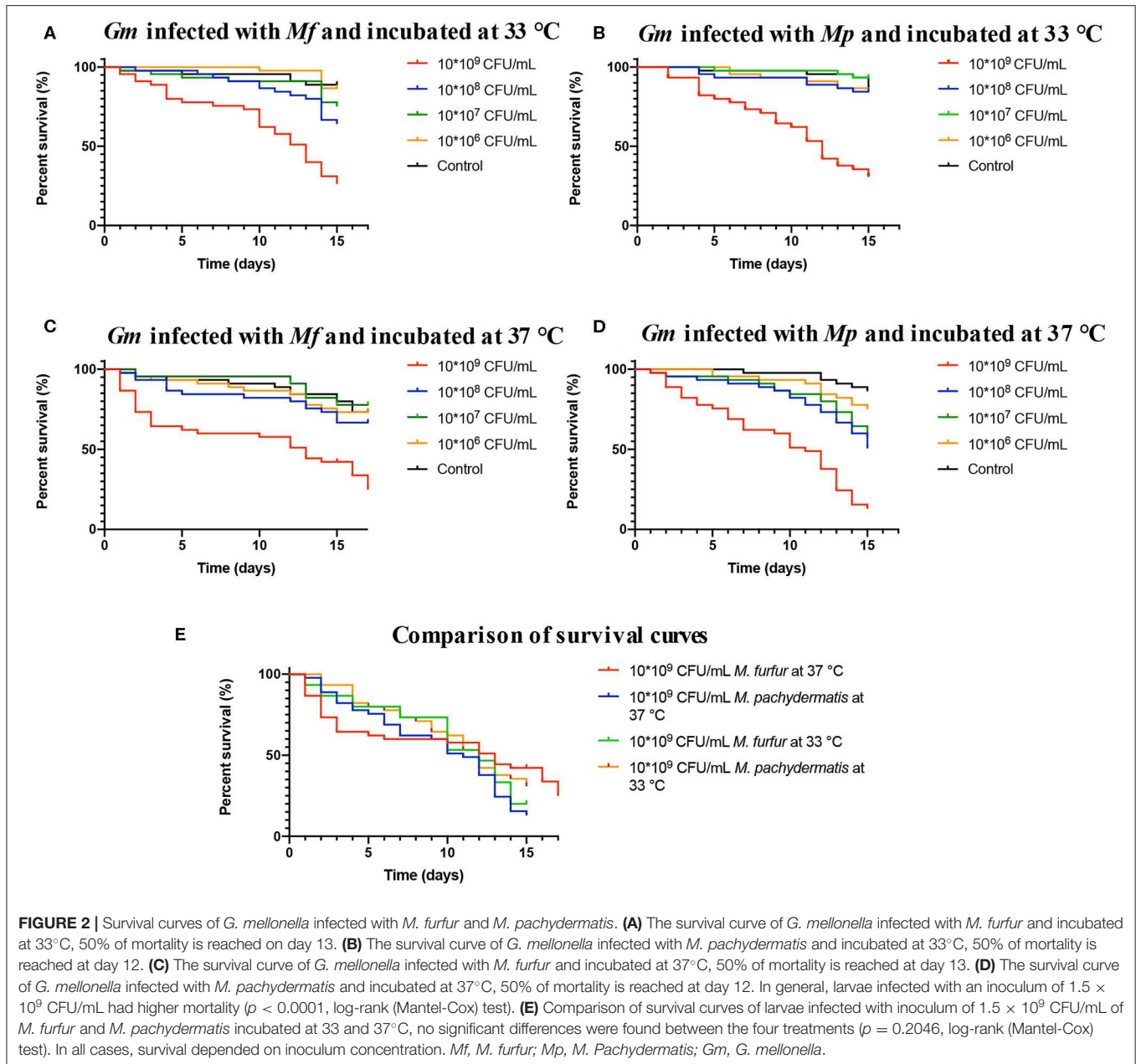
To characterize hemocytes, two larvae from each treatment were collected at random, then a puncture in the last segment of the insect was made, allowing a drop of hemolymph to drain over a glass slide. The hemolymph drop was then spread over and stained with Wright's stain. According to previous reports (Arteaga Blanco et al., 2017; Wojda, 2017; Boguś et al., 2018), hemocytes were characterized and counted under a light Leica DM500 microscope.

Fungal Burden

To access the fungal burden, three larvae per treatment were randomly collected. Their surfaces were cleaned by submerging the larvae in 0.1% sodium hypochlorite for 5 min and rinsing them twice in sterile distilled water for 1 min each time. Then, each larva was placed in 2 mL Eppendorf tubes with 1 mL of 0.5% Tween 80 each and ground for 5 min (Mylonakis et al., 2005). 100 μL of these solutions were used to make two serial dilutions, which were plated on mDixon agar at 33°C. The numbers of colony-forming units (CFU) were counted daily until no new colonies were observed.

Histopathological Analysis

On day 5, two random larvae incubated at 37°C were fixed for 10 days at 4°C in 4% paraformaldehyde in PBS (4% PFA/BS), also these larvae were injected in the left proleg with 10 μL of 4% PFA/PBS (Perdoni et al., 2014; Kloezen et al., 2015; Wuensch et al., 2018). After 10 days, they were transferred to 70% ethanol for storage (Eisenman et al., 2014; Maurer et al., 2019). Before the paraffin protocol, larvae were dissected and observed under a Leica ZoomTM2000 stereomicroscope; then, these larvae were



embedded in paraffin, cut in sections of 5 μm and stained with hematoxylin-eosin. Nodules of larvae infected with *M. furfur* and *M. pachydermatis* inoculum concentration of 1.5×10^9 CFU/mL were dissected apart and stained with calcofluor white [Sigma Aldrich, USA] and 2 mL of 10% KOH [Sigma Aldrich, USA] as described elsewhere (Sheehan and Kavanagh, 2019). Then, the nodules were observed under an Olympus FV1000 laser scanning confocal microscope at the microscopy core, μ -core, at the Universidad de los Andes.

Statistical Analysis

All experiments were performed on three independent biological replicates; survival curves were constructed using the method of Kaplan and Meier, then the curves were compared using the

Log-Rank (Mantel-Cox) test. Fungal burden, melanization score, and hemocyte count analysis were conducted using the 2-way ANOVA test. Statistical models were constructed and analyzed using the GraphPad Prism 8 software (version 8.2.0). A p -value under 0.05 was considered to be statistically significant.

RESULTS

Survival and Melanization Assay

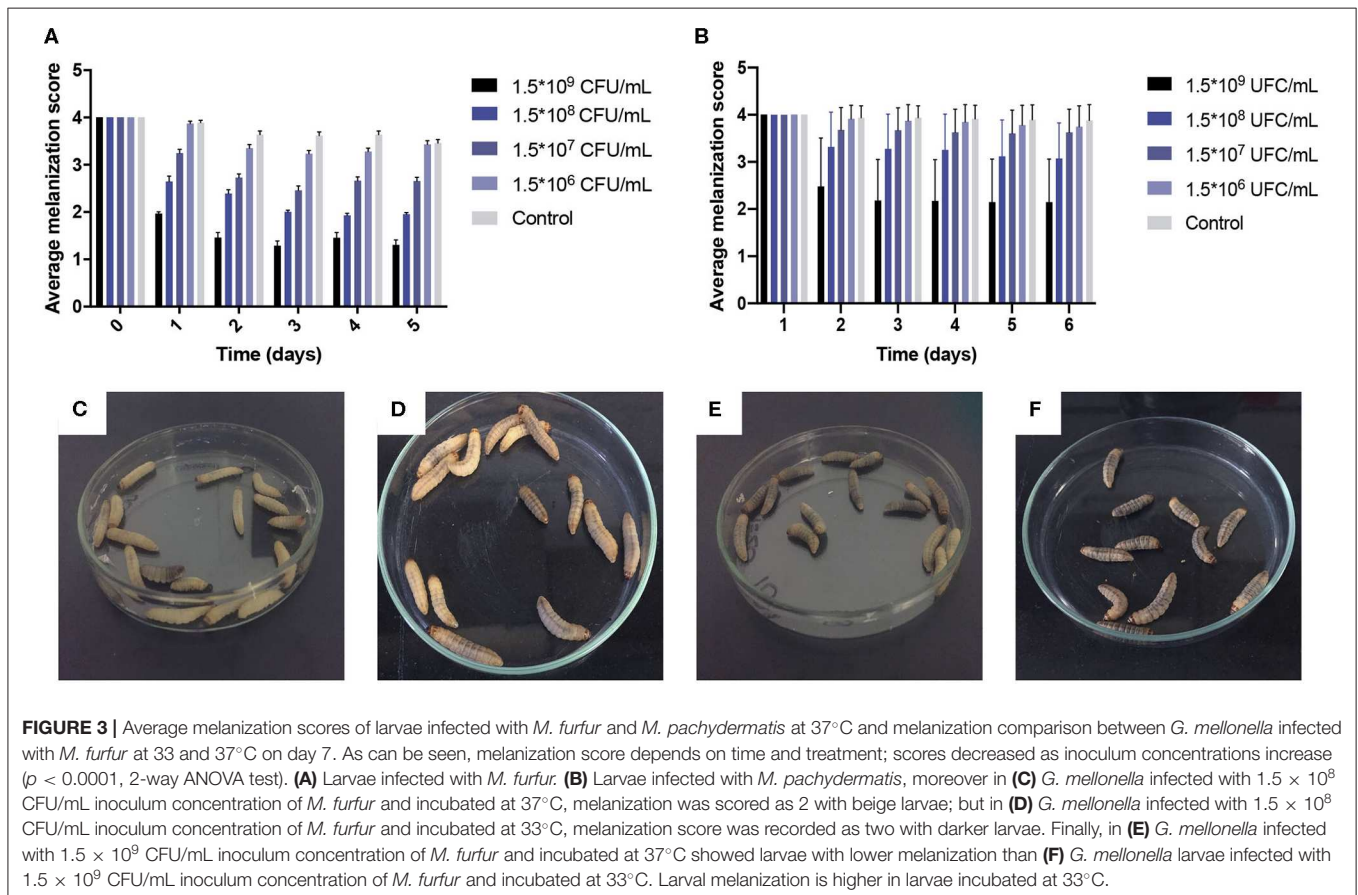
To determine the virulence of *M. furfur* and *M. pachydermatis* at 33 and 37°C, larvae were inoculated with four different inoculum concentrations. The first temperature (33°C) was used to identify whether *M. furfur* and *M. pachydermatis* could establish a systemic infection in *G. mellonella*. At 33°C, it was found that

G. mellonella larvae showed a differential survival behavior depending on the inoculum concentration (Figures 2A,B). Larvae inoculated with an inoculum concentration of 1.5×10^9 CFU/mL of the two species of *Malassezia* showed significantly decreased survival ($p < 0.0001$, log-rank [Mantel-Cox] test). In the case of larvae infected with *M. furfur*, 50% of mortality was reached on day 13 (Figure 2A), while larvae infected with *M. pachydermatis* reached 50% of mortality on day 12 (Figure 2B).

Survival of control larvae and larvae infected with the remaining three concentrations of *M. furfur* and *M. pachydermatis* (1.5×10^6 , 1.5×10^7 , and 1.5×10^8 CFU/mL) exhibited different patterns; larvae infected with *M. furfur* showed that at a lower concentration the larval survival increases, but it is still lower compared to the control larval survival ($p = 0.014$, log-rank [(Mantel-Cox)] test). In the case of larvae infected with *M. pachydermatis*, no significant difference in larval survival was found between control larvae and inoculum concentration of 1.5×10^6 CFU/mL, and for the two remaining inoculum concentrations (1.5×10^7 and 1.5×10^8 CFU/mL), it was observed that larval survival decreased ($p < 0.0001$, log-rank [(Mantel-Cox)] test). After, it was demonstrated that *M. furfur* and *M. pachydermatis* were able to establish a systemic infection in *G. mellonella* larvae at 33°C , experiments were conducted at 37°C to evaluate the systemic infection at the human corporal temperature.

Larvae infection assays conducted at 37°C showed a decrease in survival (Figures 2C,D). Since day one, dead larvae were found in challenged larvae groups infected with different inoculum concentrations of *M. furfur* and *M. pachydermatis*. A significant decrease in larval survival was observed in larvae infected with *M. furfur* inoculum concentration of 1.5×10^9 CFU/mL ($p < 0.0001$, log-rank (Mantel-Cox) test), reaching 50% of mortality on day 13, and larval death was observed since day 1. However, no larvae were reported dead from day 6 until day 10 (Figure 2C). In the case of larvae infected with *M. pachydermatis*, a significant difference in survival was found ($p < 0.0001$, log-rank [Mantel-Cox] test); larvae inoculated with the highest inoculum concentration (1.5×10^9 CFU/mL) reached 50% of larval mortality on day 11, and larval death paused from 7 to day 10 (Figure 2D).

Control larvae and larvae inoculated with *M. furfur* inoculum concentrations of 1.5×10^6 , 1.5×10^7 , and 1.5×10^8 CFU/mL did not show a significant difference in survival ($p = 0.5439$, log-rank [(Mantel-Cox)] test). On the other hand, larvae inoculated with *M. pachydermatis* showed a difference in survival when comparing the larval survival of those infected with the three remaining inoculum concentrations and the control larvae ($p = 0.0010$, log-rank [(Mantel-Cox)] test). A higher survival in control larvae and larvae inoculated with inoculum concentration of 1.5×10^6 CFU/mL than in larvae with inoculum concentrations of 1.5×10^7 and 1.5



$\times 10^8$ CFU/mL was found. The resulting data shows that survival at 37°C also depends on inoculum concentration. Survival curves of larvae inoculated with *M. furfur* and *M. pachydermatis* inoculum concentration of 1.5×10^9 CFU/mL and incubated at 33 and 37°C were compared (Figure 2E), and no significant difference was found ($p = 0.2046$, log-rank [(Mantel-Cox)] test).

The development of nodules with deposition of melanin is one of the main components of the immune response of *G. mellonella*. These nodules are visible macroscopically as brown spots, and in order to follow the progression of infection, the development of melanin nodules was monitored at 37°C. According to the scoring system used in this study, the melanization depends on time and the inoculum concentration of *M. furfur* and *M. pachydermatis* (Figures 3A,B). Melanization in larvae infected with both species of *Malassezia* showed to increase over time, with a significant decrease in the melanization score ($p < 0.0001$, 2-way ANOVA test). This melanization score showed a significant difference between control larvae and inoculated larvae ($p < 0.0001$, 2-way ANOVA test). The development of brown spots increased proportionally with the increase of inoculum concentration. The lowest melanization score was recorded in larvae inoculated with the highest concentration of both species of *Malassezia* (the melanization score range from 2 to 1). Finally, for *M. furfur*, it was observed that larvae incubated at 33°C exhibited higher melanization than those incubated at 37°C (Figures 3C–F).

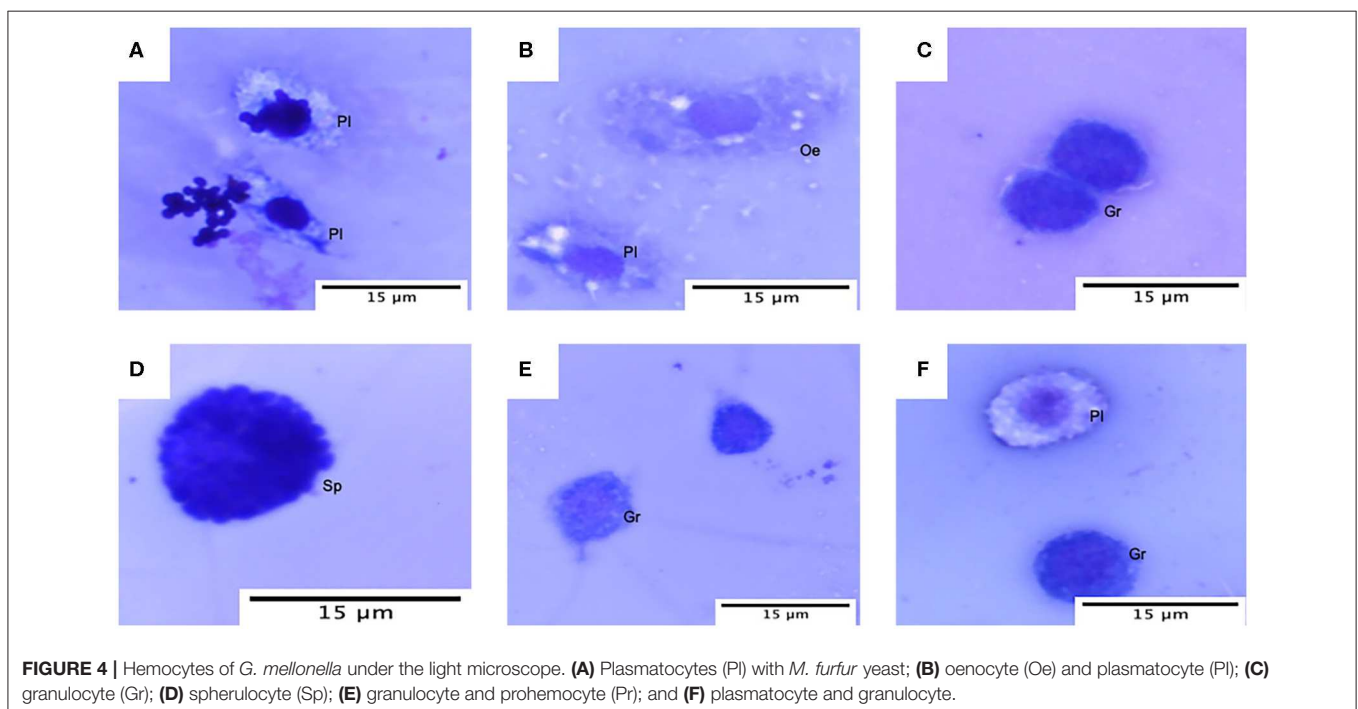
Hemocytes Characterization

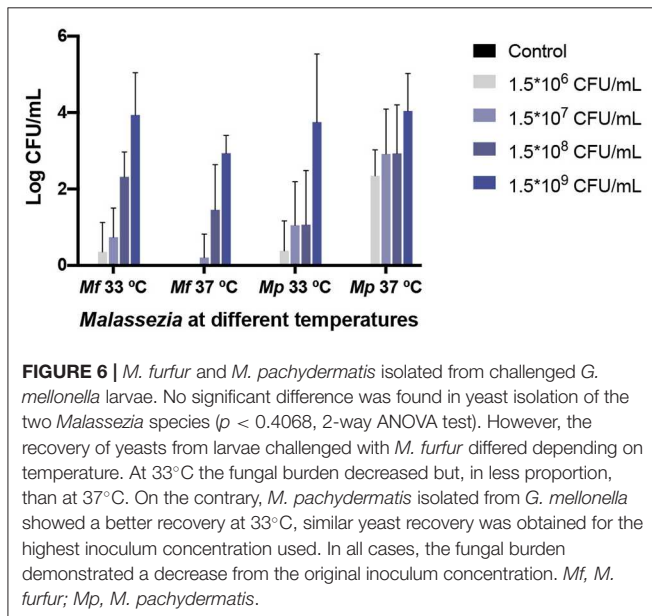
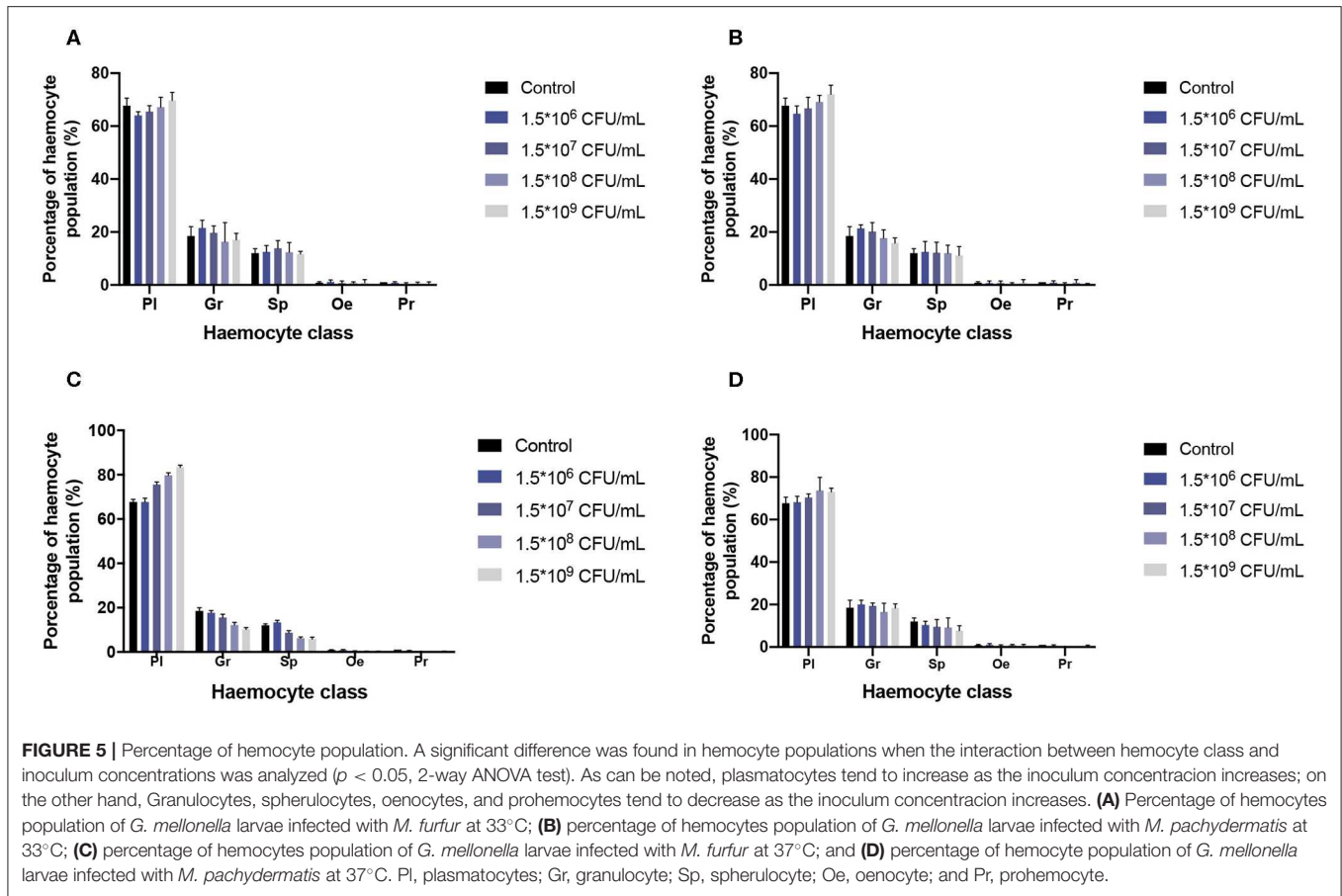
Hemocyte population percentages were obtained and tabulated to characterize the immune response of *G. mellonella* and

determine whether or not the infection of the two species of *Malassezia* has an effect on hemocyte populations. Cell classification was carried out based on size and morphology (Figure 4) (Arteaga Blanco et al., 2017; Wojda, 2017; Boguś et al., 2018). In both cases of *M. furfur* and *M. pachydermatis* infection assays at 33 or 37°C, a significant difference was found between cell populations ($p < 0.0001$, 2-way ANOVA test). No significant differences were found between any of the five treatments at 33 and 37°C (for larvae infected with *M. furfur* incubated at 33°C, $p = 0.8076$; at 37°C $p = 0.9582$ and for larvae infected with *M. pachydermatis* at 33°C, $p = 0.9999$; at 37°C, $p = 0.9907$, 2-way ANOVA test). However, the interaction between type of hemocytes and the treatment showed a significant difference in the percentage of hemocyte populations for larvae infected with *M. furfur* and *M. pachydermatis* at any of the two temperatures ($p < 0.05$, 2-way ANOVA test). The pattern observed indicates that the percentage of plasmocytes tends to increase, and the percentages of granulocytes, spherulocytes, oenocytoids, and prohemocytes decrease as the inoculum concentration increases for both larvae infected with *M. furfur* or *M. pachydermatis* (Figure 5).

Fungal Burden

No significant difference in yeast isolation was found between any treatment (larvae infected with *M. furfur* or *M. pachydermatis* and incubated at 33 and 37°C) ($p < 0.4068$, 2-way ANOVA test). However, as can be seen in Figure 6, *M. furfur* isolation from larvae incubated at 37°C was lower than from those incubated at 33°C. The yeast isolation from larvae inoculated with 1.5×10^9 CFU/mL and incubated at 37°C was 10-folds lower than from those incubated at 33°C; as matter of



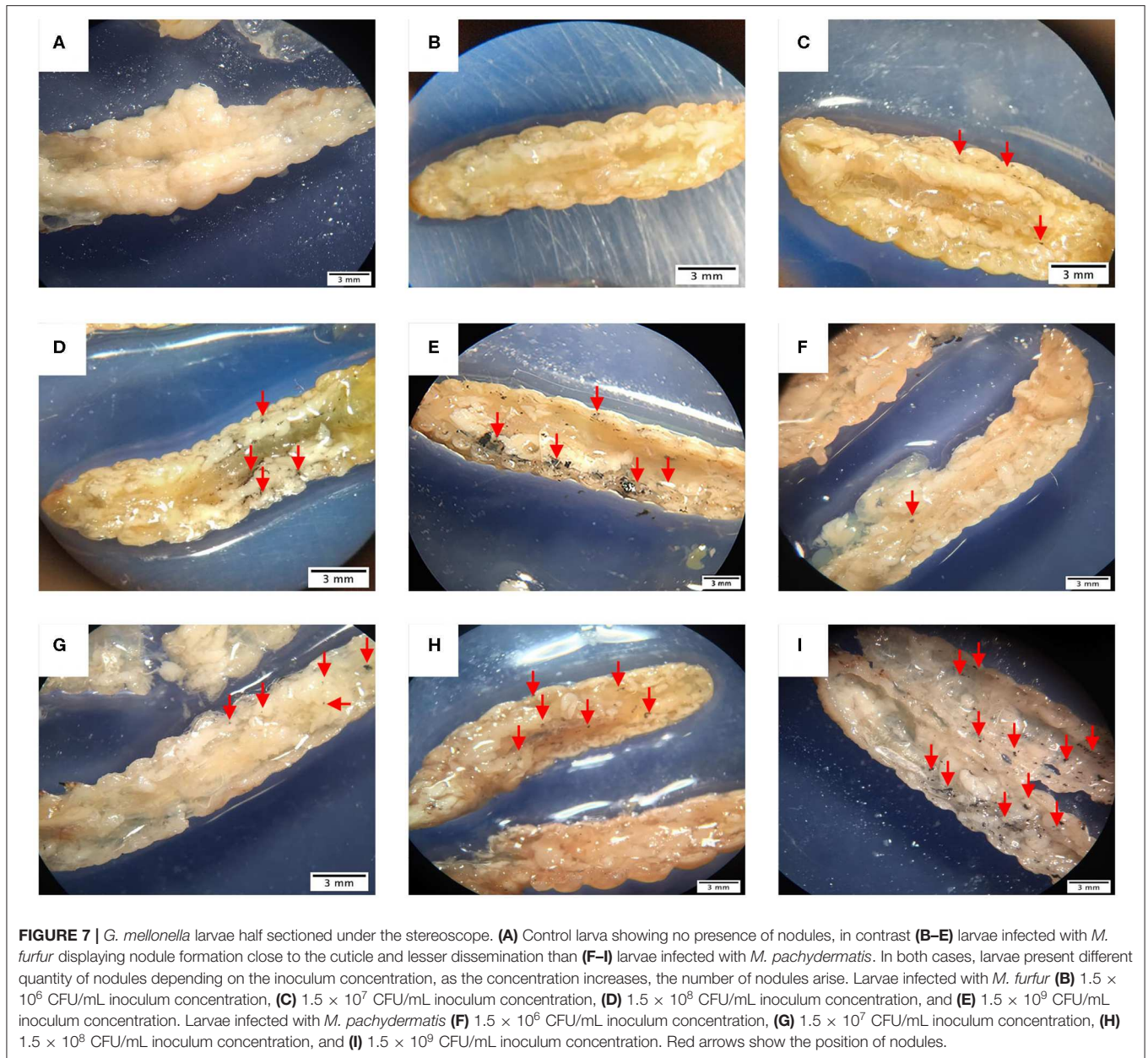


fact, there was no isolation of yeasts from larvae inoculated with the lowest inoculum concentration and incubated at 37°C.

On the contrary, *M. pachydermatis* was isolated in higher proportion from larvae incubated at 37°C than from larvae incubated at 33°C, with the isolation of yeast from larvae inoculated with 1.5×10^9 CFU/mL and incubated at 37°C, 2-folds higher than from larvae incubated at 33°C. At both temperatures, the *M. pachydermatis* burden was higher than the *M. furfur* burden in *G. mellonella* larvae, with the exception of larvae inoculated with the highest concentration and incubated at 33°C, in which the yeast isolation was 1.5-folds higher from larvae inoculated with *M. furfur* than from larvae inoculated with *M. pachydermatis*. At 37°C and using the highest inoculum concentration, the yeast recovery was 12-folds higher from larvae inoculated with *M. pachydermatis* than from larvae inoculated with *M. furfur*. In all cases, the fungal burden decreased compared to the original inoculum concentrations and it depended on its original inoculum concentration.

Histopathological Analysis

In order to evaluate the dissemination of *M. furfur* and *M. pachydermatis* at 37°C, larvae were sectioned into two halves and observed. As can be seen in **Figure 7**, larvae infected with either of the two species of *Malassezia* showed an increase in nodule occurrence as the inoculum concentration increased. In the case of larvae infected with *M. furfur*, it was perceived that the occurrence of nodules was concentrated to the periphery near

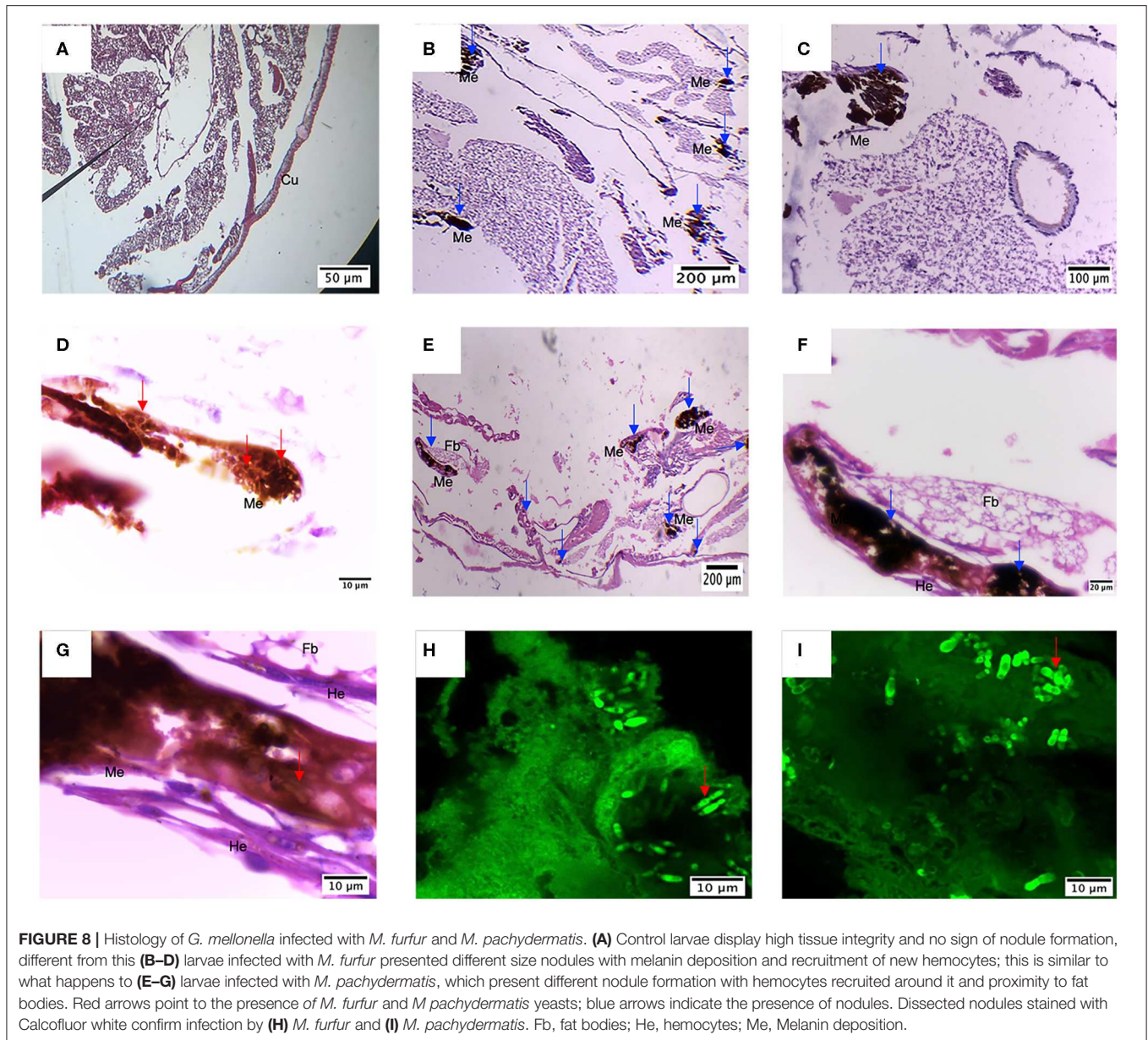


the site of microinjection; in fact, this was easier to see in larvae infected with the highest concentration (**Figures 7A–E**). On the other hand, larvae infected with *M. pachydermatis* exhibited higher dissemination and occurrence of small nodules through the hemocoel (**Figures 7F–I**).

Once the presence of the nodules and the pattern of dissemination was observed, larvae were embedded in paraffin and sectioned to identify changes in larval tissue and the immune response, as well as to confirm the establishment of the infection. First, comparing infected larvae with control larvae, the loss of tissue integrity is evident (**Figure 8**). Besides, larvae infected with *M. furfur* inoculum concentration of 1.5×10^9 CFU/mL showed the presence of several nodules with melanin deposition

of different sizes (**Figure 8B**). An enlarged image of one of the nodules (100X) shows the presence of newly recruited hemocyte around it (**Figure 8C**). Finally, yeasts of *M. furfur* are shown in the magnified nodule (1000X) (**Figure 8D**).

Compared to *M. furfur*, larvae infected with *M. pachydermatis* also exhibited nodule formations and higher hemocyte recruitment (**Figures 8E,F**). Inside the nodule, it is possible to observe yeasts of *M. pachydermatis* (**Figure 8G**); in both cases, the structures were found close to the fat bodies. To confirm the infection by either of the species of *Malassezia*, yeasts were stained with calcofluor white and observed under the confocal microscope. In contrast to *M. furfur*, a higher number of *M. pachydermatis* was found inside the nodules (**Figures 8H,I**).



DISCUSSION

G. mellonella has been successfully implemented as an infection model of fungal pathogens, like *Madurella mycetomatis* (Kloezen et al., 2015), *Cryptococcus neoformans* (Eisenman et al., 2014), *Aspergillus flavus* (Scully and Bidochka, 2005), *Candida albicans* (Amorim-Vaz et al., 2015), *Candida tropicalis* (Mesa-Arango et al., 2013), and dermatophytes (Achterman et al., 2011; Ishii et al., 2017). This model allows the evaluation of virulence factors, anti-fungal agents and immune response to a pathogen. Compared to other animal models, *G. mellonella* larvae are easy to handle, cheap, have no ethical limitations, and their innate immune system is similar to that of humans (Fuchs et al., 2010; Pereira et al., 2018; Singkum et al., 2019; Trevijano-Contador and Zaragoza, 2019). Besides, as shown in this study,

larvae can be easily reared at the desired temperature in an incubator, allowing the researchers to have better control of the experimental condition and to get reliable and reproducible data.

In this study, the establishment of the systemic infection of *M. furfur* and *M. pachydermatis* in *G. mellonella* was tested, two species belonging to the Genus *Malassezia* that have been related to opportunistic infection in the bloodstream in newborns and immunocompromised patients (Dokos et al., 2011; Gaitanis et al., 2012; Al-Sweih et al., 2014; Iatta et al., 2014; Chen et al., 2020). For the first time, it has been demonstrated that *M. furfur* and *M. pachydermatis* can establish a systemic infection in *G. mellonella* larvae. Also, it was shown that the larval survival depends on inoculum concentration; at the highest inoculum concentration tested (1.5×10^9 CFU/mL), 50% of mortality was reached between day 12 and 13 for both species.

Furthermore, it was found that *M. furfur* at low concentrations can affect larval survival when they are incubated at 33°C, contrary to larvae incubated at 37°C in which larval survival is only affected at the highest inoculum concentration (1.5×10^9 CFU/mL). In contrast, larvae inoculated with *M. pachydermatis* showed a decrease in larval survival at any temperature, even in low concentrations. Larval survival variations at different temperatures for *M. furfur* and *M. pachydermatis* infection could be related to their ecology, since *M. pachydermatis* is mainly found in domestic animals, like dogs and cats, which mean temperatures are 38.2 and 38.1°C, respectively (Kabatchnick et al., 2016). On the other hand, *M. furfur* is primarily found in human beings with a lower corporal temperature than the mentioned animals, leading to the belief that *M. pachydermatis* is better adapted to a higher temperature than *M. furfur*. Indeed, it has been reported in previous studies that *M. pachydermatis* has its optimal growing temperature between 32 and 37°C (Bond and Lloyd, 1996); on the other hand, the optimal growing temperature of *M. furfur* is around 34°C (Leeming and Notman, 1987).

Phospholipase activity is an important virulence factor in tissue invasion in chronic otitis in animals; in fact, strains of *M. pachydermatis* isolated from dogs with otitis showed higher expression and activity of phospholipases than strains isolated from healthy animals (Cafarchia and Otranto, 2004; Ortiz et al., 2013). Also, it was shown that *M. pachydermatis* has a high lipase and phospholipase activity in comparison to *M. furfur* (Juntachai et al., 2009). Herein, *M. pachydermatis* showed to decrease larval survival at any concentration and at both temperatures. In contrast, *M. furfur* showed a decrease in the negative effect on larval survival at 37°C and the negative effect on larval survival at 33°C was lower than the negative effect of *M. pachydermatis*. This may be a consequence of the phospholipase activity of *M. pachydermatis* that allows invasion causing damage to the host, making it more pathogenic than *M. furfur*.

Larval mortality paused from day 6 to 10 for larvae infected with either *M. furfur* or *M. pachydermatis* and incubated at 37°C. This may be due to the fact that hemocytes in *G. mellonella* larvae tend to decrease at the end of the last larval instar until pupation. Also, it has been reported that fungal infection can lead to a decrease in the number of hemocytes (Bogus et al., 2018), which can suggest that cellular innate immune response is responsible for controlling *Malassezia* spp. Owing to the fact that once the percentage of hemocytes decreases as part of the physiology of the insect or as part of a virulence factor of the two species of *Malassezia*, the progression of infection retakes, agreeing with previous findings in which *M. pachydermatis* infection could only be established in *Toll*-deficient *Drosophila melanogaster* flies and immunosuppressed Swiss mice (Merkel et al., 2018; Schlemmer et al., 2018).

In contrast to other studies related to fungal infection assays in *G. mellonella* (Achterman et al., 2011; Mesa-Arango et al., 2013; Eisenman et al., 2014; Merkel et al., 2018; Sheehan and Kavanagh, 2019), the highest inoculum concentration (1.5×10^9 CFU/mL) was needed to successfully establish the *M. furfur* and *M. pachydermatis* systemic infection. This agrees

with a previous report where nematodes challenged with *M. pachydermatis* showed higher survival than those infected with *C. albicans* (Brilhante et al., 2018). The aforementioned results may be due to the immune response and the low virulence of these yeasts that usually are found in skin mycobiota as commensal microorganisms (Yamasaki et al., 2009; Grice and Dawson, 2017; Schlemmer et al., 2018). The high load inoculum needed and the fact that the infection progress is improved as the number of hemocytes decreases can be an approach to better understand the reason why these two species of *Malassezia* can cause systemic infections in low weight newborns and immunosuppressed patients with a way of entry (intravascular catheter) and nutritional supply (parenteral nutrition with lipid infusion) for *Malassezia*.

The progress of the infection was evaluated through the melanization score, which depended on time and inoculum concentration; moreover, dissemination of the infection was evidenced by the observation of half sectioned larvae under a stereoscope, where a higher presence of nodules close to the microinjection site was found. Also, the number of nodules appeared to increase as the concentration of the inoculum was augmented, agreeing with the previous report on fungal pathogens (Perdoni et al., 2014; Sheehan and Kavanagh, 2019). Furthermore, as previously demonstrated, fungal burden decreased over time, which may be related to the immune response (Merkel et al., 2018; Schlemmer et al., 2018), but it did not show a significant difference between the two species at 33 and 37°C.

A previous study showed that the hydrophobicity of the cell wall of *M. pachydermatis* was higher than the cell wall of *M. furfur*, and also the hydrophobicity of *M. pachydermatis* was the same at 25 and 37°C, while the hydrophobicity of *M. furfur* was stronger at 25°C than at 37°C (Shibata et al., 2009). Hydrophobicity has been related to adherence and biofilm formation, the latter may provide protection from the host immune system (Cannizzo et al., 2007; Buommino et al., 2016; Angiolella et al., 2018), as has been shown before in *C. albicans* (Katragkou et al., 2010; Xie et al., 2012). This may explain why *M. pachydermatis* isolation was higher than *M. furfur* isolation; as matter of fact, the *Malassezia pachydermatis* isolation was 12-folds higher at 37°C than the *M. furfur* isolation, leading to the belief that *M. pachydermatis* can better avoid the immune system than *M. furfur*, and this is more evident at 37°C.

With respect to the percentage of hemocyte populations, the analysis of the interaction between the hemocyte class and the inoculum concentration showed an effect on the percentage of hemocyte populations. It was observed that the percentage of plasmocytes tends to increase with respect to the other four hemocyte classes. This may be due to the fact that these cells are responsible for adherence and phagocytosis, which is the main antifungal immune response, and also that these cells participated in nodule formation (Arteaga Blanco et al., 2017; Bogus et al., 2018; Pereira et al., 2018).

The histological findings revealed the presence of nodules surrounded by hemocytes with melanin deposition as part of the immune response of *G. mellonella*. The location of

these nodules was mainly close to the cuticle in association with fat bodies; besides, tissue integrity was disrupted in larvae infected with the highest concentrations, similar to previous findings in other fungal infection assays (Eisenman et al., 2014; Perdoni et al., 2014; Wuensch et al., 2018; Sheehan and Kavanagh, 2019). The presence of yeast of *M. furfur* and *M. pachydermatis* inside the nodules was observed using calcofluor white, confirming infection by these two agents.

In conclusion, it has been demonstrated in the present study that *G. mellonella* is a suitable infection model for *M. furfur* and *M. pachydermatis*. The larvae have shown to successfully respond and control *Malassezia* infection through the innate immune response. However, in this study, the reference strains used were originally isolated from skin lesions (Guého-Kellermann et al., 2010), which may be a bias. Further studies must be done to evaluate different strains from symptomatic and asymptomatic hosts, the systemic infection in immunosuppressed larvae, virulence factor expression and antifungal resistance, allowing mycologists to unravel the host-pathogen interaction that leads *Malassezia* spp. to stay as a commensal microorganism in the skin of healthy patients or to become an opportunistic pathogen in immunosuppressed ones.

REFERENCES

- Achterman, R. R., Smith, A. R., Oliver, B. G., and White, T. C. (2011). Sequenced dermatophyte strains: growth rate, conidiation, drug susceptibilities, and virulence in an invertebrate model. *Fungal Genet. Biol.* 48, 335–341. doi: 10.1016/j.fgb.2010.11.010
- Al-Sweih, N., Ahmad, S., Joseph, L., Khan, S., and Khan, Z. (2014). *Malassezia pachydermatis* fungemia in a preterm neonate resistant to fluconazole and flucytosine. *Med. Mycol. Case Rep.* 5, 9–11. doi: 10.1016/j.mmcr.2014.04.004
- Amorim-Vaz, S., Delarze, E., Ischer, F., Sanglard, D., and Coste, A. T. (2015). Examining the virulence of *Candida albicans* transcription factor mutants using *Galleria mellonella* and mouse infection models. *Front. Microbiol.* 6:367. doi: 10.3389/fmicb.2015.00367
- Angiolella, L., Leone, C., Rojas, F., Mussin, J., Angeles de los Sosa, M., and Giusiano, G. (2018). Biofilm, adherence, and hydrophobicity as virulence factors in *Malassezia furfur*. *Med. Mycol.* 56, 110–116. doi: 10.1093/mmy/myx014
- Arteaga Blanco, L. A., Crispim, J. S., Fernandes, K. M., de Oliveira, L. L., Pereira, M. F., Bazzolli, D. M. S., et al. (2017). Differential cellular immune response of *Galleria mellonella* to *Actinobacillus pleuropneumoniae*. *Cell Tissue Res.* 370, 153–168. doi: 10.1007/s00441-017-2653-5
- Bell, L. M., Alpert, G., Slight, P. H., and Campos, J. M. (1988). *Malassezia furfur* skin colonization in infancy. *Infect. Control Hosp. Epidemiol.* 9, 151–153. doi: 10.2307/30145422
- Bogus, M. I., Ligeza-Zuber, M., Polanska, M. A., Mosiewicz, M., Włóka, E., and Sobocinska, M. (2018). Fungal infection causes changes in the number, morphology and spreading ability of *Galleria mellonella* haemocytes. *Physiol. Entomol.* 43, 214–226. doi: 10.1111/phen.12246
- Bond, R., and Lloyd, D. H. (1996). Comparison of media and conditions of incubation for the quantitative culture of *Malassezia pachydermatis* from canine skin. *Res. Vet. Sci.* 61, 273–274. doi: 10.1016/S0034-5288(96)90078-8
- Brilhante, R. S. N., da Rocha, M. G., de Melo Guedes, G. M., de Oliveira, J. S., dos Santos Araújo, G., España, J. D. A., et al. (2018). *Malassezia pachydermatis* from animals: planktonic and biofilm antifungal susceptibility and its virulence arsenal. *Vet. Microbiol.* 220, 47–52. doi: 10.1016/j.vetmic.2018.05.003
- Buommino, E., Nocera, F. P., Parisi, A., Rizzo, A., Donnarumma, G., Mallardo, K., et al. (2016). Correlation between genetic variability and virulence factors

DATA AVAILABILITY STATEMENT

The datasets generated for this study are available on request to the corresponding author.

AUTHOR CONTRIBUTIONS

AC, MT, CP, and EP contributed to the design of the work. AC, MT, EP, FR, and HM performed the experiments. AC, MT, and FR were involved in the analysis and interpretation of data. MT wrote the manuscript. AC and CP made revisions. All authors approved the version to be published and agreed to be accountable for all aspects of the work.

FUNDING

This work was supported by the Faculty of Sciences at the Universidad de los Andes through grant No. INV-2019-62-1658.

ACKNOWLEDGMENTS

We thank the microscopy core, μ -core, of the Vice-presidency of research at the Universidad de los Andes, Colombia.

in clinical strains of *Malassezia pachydermatis* of animal origin. *New Microbiol.* 39, 216–223.

- Cabañes, F. J. (2014). *Malassezia* yeasts: how many species infect humans and animals? *PLoS Pathog.* 10:e1003892. doi: 10.1371/journal.ppat.1003892
- Cabañes, F. J., Coutinho, S. D. A., Puig, L., Bragulat, M. R., and Castellá, G. (2016). New lipid-dependent *Malassezia* species from parrots. *Rev. Iberoam. Micol.* 33, 92–99. doi: 10.1016/j.riam.2016.03.003
- Cafarchia, C., and Otranto, D. (2004). Association between phospholipase production by *Malassezia pachydermatis* and skin lesions. *J. Clin. Microbiol.* 42, 4868–4869. doi: 10.1128/JCM.42.10.4868-4869.2004
- Cannizzo, F. T., Eraso, E., Ezkurra, P. A., Villar-Vidal, M., Bollo, E., Castellá, G., et al. (2007). Biofilm development by clinical isolates of *Malassezia pachydermatis*. *Med. Mycol.* 45, 357–361. doi: 10.1080/13693780701225767
- Capilla, J., Clemons, K. V., and Stevens, D. A. (2007). Animal models: an important tool in mycology. *Med. Mycol.* 45, 657–684. doi: 10.1080/13693780701644140
- Champion, O. L., Titball, R. W., and Bates, S. (2018). Standardization of *G. Mellonella* larvae to provide reliable and reproducible results in the study of fungal pathogens. *J. Fungi* 4:108. doi: 10.3390/jof4030108
- Chang, H. J., Miller, H. L., Watkins, N., Arduino, M. J., Ashford, D. A., Midgley, G., et al. (1998). An epidemic of *Malassezia pachydermatis* in an intensive care nursery associated with colonization of health care workers' pet dogs. *N. Engl. J. Med.* 338, 706–711. doi: 10.1056/NEJM199803123381102
- Chen, I. T., Chen, C. C., Huang, H. C., and Kuo, K. C. (2020). *Malassezia furfur* emergence and candidemia trends in a neonatal intensive care unit during 10 years: the experience of fluconazole prophylaxis in a single hospital. *Adv. Neonatal Care* 20, E3–E8. doi: 10.1097/ANC.0000000000000640
- Cools, F., Torfs, E., Aizawa, J., Vanhoutte, B., Maes, L., Caljon, G., et al. (2019). Optimization and characterization of a *Galleria mellonella* larval infection model for virulence studies and the evaluation of therapeutics against *Streptococcus pneumoniae*. *Front. Microbiol.* 10:311. doi: 10.3389/fmicb.2019.00311
- DeAngelis, Y. M., Gemmer, C. M., Kaczvinsky, J. R., Kenneally, D. C., Schwartz, J. R., and Dawson, T. L. (2005). Three etiologic facets of dandruff and seborrheic dermatitis: *Malassezia* fungi, sebaceous lipids, and individual sensitivity. *J. Invest. Dermatol. Symp. Proc.* 10, 295–297. doi: 10.1111/j.1087-0024.2005.10119.x

- Dokos, C., Pana, Z. D., and Tragiannidis, A. (2011). *Malassezia* species: a rare cause of invasive fungal infections in immunocompromised patients. *Curr. Fungal Infect. Rep.* 5, 18–22. doi: 10.1007/s12281-010-0037-3
- Eisenman, H. C., Duong, R., Chan, H., Tsue, R., and McClelland, E. E. (2014). Reduced virulence of melanized *Cryptococcus neoformans* in *Galleria mellonella*. *Virulence* 5, 611–618. doi: 10.4161/viru.29234
- Fallon, J., Kelly, J., and Kavanagh, K. (2012). “*Galleria mellonella* as a model for fungal pathogenicity testing,” in *Host-Fungus Interactions: Methods and Protocols*, eds A. Brand and D. MacCallum (Totowa, NJ: Humana Press), 469–485. doi: 10.1007/978-1-61779-539-8_33
- Freitag, D., Schmidtberg, H., Dickel, F., Lochnit, G., Vogel, H., and Vilcinskas, A. (2014). The maternal transfer of bacteria can mediate trans-generational immune priming in insects. *Virulence* 5, 547–554. doi: 10.4161/viru.28367
- Fuchs, B. B., O'Brien, E., El Khoury, J. B., and Mylonakis, E. (2010). Methods for using *Galleria mellonella* as a model host to study fungal pathogenesis. *Virulence* 1, 475–482. doi: 10.4161/viru.1.6.12985
- Gaitanis, G., Magiatis, P., Hantschke, M., Bassukas, I. D., and Velegraki, A. (2012). The *Malassezia* genus in skin and systemic diseases. *Clin. Microbiol. Rev.* 25, 106–141. doi: 10.1128/CMR.00021-11
- Grice, E. A., and Dawson, T. L. (2017). Host–microbe interactions: *Malassezia* and human skin. *Curr. Opin. Microbiol.* 40, 81–87. doi: 10.1016/j.mib.2017.10.024
- Guého-Kellermann, E., Boekhout, T., and Begerow, D. (2010). “Biodiversity, phylogeny and ultrastructure,” in *Malassezia and the Skin: Science and Clinical Practice* eds T. Boekhout, P. Maysere, E. Guého-Kellermann, A. Velegraki (Berlin Heidelberg: Springer), 17–63. doi: 10.1007/978-3-642-03616-3_2
- Gupta, A. K., Batra, R., Bluhm, R., Boekhout, T., and Dawson, T. L. (2004). Skin diseases associated with *Malassezia* species. *J. Am. Acad. Dermatol.* 51, 785–798. doi: 10.1016/j.jaad.2003.12.034
- Gupta, P., Chakrabarti, A., Singhi, S., Kumar, P., Honnavar, P., and Rudramurthy, S. M. (2014). Skin colonization by *Malassezia* spp. in hospitalized neonates and infants in a tertiary care centre in North India. *Mycopathologia* 178, 267–272. doi: 10.1007/s11046-014-9788-7
- Honnavar, P., Prasad, G. S., Ghosh, A., Dogra, S., Handa, S., and Rudramurthy, S. M. (2016). *Malassezia arunalokei* sp. nov., a novel yeast species isolated from seborrheic dermatitis patients and healthy individuals from India. *J. Clin. Microbiol.* 54, 1826–1834. doi: 10.1128/JCM.00683-16
- Iatta, R., Battista, M., Miragliotta, G., Boekhout, T., Otranto, D., and Cafarchia, C. (2018). Blood culture procedures and diagnosis of *Malassezia furfur* bloodstream infections: strength and weakness. *Med. Mycol.* 56, 828–833. doi: 10.1093/mmy/myx122
- Iatta, R., Cafarchia, C., Cuna, T., Montagna, O., Laforgia, N., Gentile, O., et al. (2014). Bloodstream infections by *Malassezia* and *Candida* species in critical care patients. *Med. Mycol.* 52, 264–269. doi: 10.1093/mmy/myt004
- Ishii, M., Matsumoto, Y., Yamada, T., Abe, S., and Sekimizu, K. (2017). An invertebrate infection model for evaluating anti-fungal agents against dermatophytosis. *Sci. Rep.* 7:12289. doi: 10.1038/s41598-017-12523-z
- Juntachai, W., Oura, T., Murayama, S. Y., and Kajiwara, S. (2009). The lipolytic enzymes activities of *Malassezia* species. *Med. Mycol.* 47, 477–484. doi: 10.1080/13693780802314825
- Kabatchnick, E., Langston, C., Olson, B., and Lamb, K. E. (2016). Hypothermia in uremic dogs and cats. *J. Vet. Intern. Med.* 30, 1648–1654. doi: 10.1111/jvim.14525
- Kaneko, T., Murotani, M., Ohkusu, K., Sugita, T., and Makimura, K. (2012). Genetic and biological features of catheter-associated *Malassezia furfur* from hospitalized adults. *Med. Mycol.* 50, 74–80. doi: 10.3109/13693786.2011.584913
- Katragkou, A., Kruhlak, M. J., Simitopoulou, M., Chatzimoschou, A., Taparkou, A., Cotten, C. J., et al. (2010). Interactions between human phagocytes and *Candida albicans* biofilms alone and in combination with antifungal agents. *J. Infect. Dis.* 201, 1941–1949. doi: 10.1086/652783
- Kay, S., Edwards, J., Brown, J., and Dixon, R. (2019). *Galleria mellonella* infection model identifies both high and low lethality of *Clostridium perfringens* toxigenic strains and their response to antimicrobials. *Front. Microbiol.* 10:1281. doi: 10.3389/fmicb.2019.01281
- Kloezen, W., van Helvert-van Poppel, M., Fahal, A. H., and van de Sande, W. W. J. (2015). A *Madurella mycetomatis* green model in *Galleria mellonella* larvae. *PLoS Negl. Trop. Dis.* 9, 1–14. doi: 10.1371/journal.pntd.0003926
- Lacharme-Lora, L., Owen, S. V., Blundell, R., Canals, R., Wenner, N., Perez-Sepulveda, B., et al. (2019). The use of chicken and insect infection models to assess the virulence of African *Salmonella typhimurium* ST313. *PLoS Negl. Trop. Dis.* 13:e0007540. doi: 10.1371/journal.pntd.0007540
- Lee, J., Cho, Y. G., Kim, D. S., Choi, S. I., and Lee, H. S. (2018). First case of catheter-related *Malassezia pachydermatis* fungemia in an adult. *Ann. Lab. Med.* 39, 99–101. doi: 10.3343/alm.2019.39.1.99
- Leeming, J. P., and Notman, F. H. (1987). Improved methods for isolation and enumeration of *Malassezia furfur* from human skin. *J. Clin. Microbiol.* 25, 2017–2019. doi: 10.1128/JCM.25.10.2017-2019.1987
- Loh, J. M. S., Adenwalla, N., Wiles, S., and Proft, T. (2013). *Galleria mellonella* larvae as an infection model for group A streptococcus. *Virulence* 4, 419–428. doi: 10.4161/viru.24930
- Maurer, E., Hörtnagl, C., Lackner, M., Grässle, D., Naschberger, V., Moser, P., et al. (2019). *Galleria mellonella* as a model system to study virulence potential of mucormycetes and evaluation of antifungal treatment. *Med. Mycol.* 57, 351–362. doi: 10.1093/mmy/myy042
- McGinnis, M. R., and Borgers, M. (1989). *Current Topics in Medical Mycology*. New York, NY: Springer-Verlag, 1–35. doi: 10.1007/978-1-4612-3624-5
- Merkel, S., Heidrich, D., Danilevicz, C. K., Scroferneker, M. L., and Zanette, R. A. (2018). *Drosophila melanogaster* as a model for the study of *Malassezia pachydermatis* infections. *Vet. Microbiol.* 224, 31–33. doi: 10.1016/j.vetmic.2018.08.021
- Mesa-Arango, A. C., Forastiero, A., Bernal-Martínez, L., Cuenca-Estrella, M., Mellado, E., and Zaragoza, O. (2013). The non-mammalian host *Galleria mellonella* can be used to study the virulence of the fungal pathogen *Candida tropicalis* and the efficacy of antifungal drugs during infection by this pathogenic yeast. *Med. Mycol.* 51, 461–472. doi: 10.3109/13693786.2012.737031
- Mylonakis, E., Moreno, R., El Khoury, J. B., Idnurm, A., Heitman, J., Calderwood, S. B., et al. (2005). *Galleria mellonella* as a model system to study *Cryptococcus neoformans* pathogenesis. *Infect. Immun.* 73, 3842–3850. doi: 10.1128/IAI.73.7.3842-3850.2005
- Nagata, R., Nagano, H., Ogishima, D., Nakamura, Y., Hiruma, M., and Sugita, T. (2012). Transmission of the major skin microbiota, *Malassezia*, from mother to neonate. *Pediatr. Int.* 54, 350–355. doi: 10.1111/j.1442-200X.2012.03563.x
- Ortiz, G., Martín, M. C., Carrillo-Muñoz, A. J., and Payá, M. J. (2013). Phospholipase and proteinase production by *Malassezia pachydermatis* isolated in dogs with and without otitis. *Rev. Iberoam. Micol.* 30, 235–238. doi: 10.1016/j.riam.2013.01.006
- Paul, A. A., Hoffman, K. L., Hagan, J. L., Sampath, V., Petrosino, J. F., and Pammi, M. (2019). Fungal cutaneous microbiome and host determinants in preterm and term neonates. *Pediatr. Res.* doi: 10.1038/s41390-019-0719-7
- Perdoni, F., Falleni, M., Tosi, D., Cirasola, D., Romagnoli, S., Braidotti, P., et al. (2014). A histological procedure to study fungal infection in the wax moth *Galleria mellonella*. *Eur. J. Histochem.* 58, 258–262. doi: 10.4081/ejh.2014.2428
- Pereira, T., de Barros, P., Fugisaki, L., Rossoni, R., Ribeiro, F., de Menezes, R., et al. (2018). Recent advances in the use of *Galleria mellonella* model to study immune responses against human pathogens. *J. Fungi* 4:128. doi: 10.3390/jof4040128
- Prohic, A., Jovovic Sadikovic, T., Krupaliya-Fazlic, M., and Kuskunovic-Vlahovljak, S. (2016). *Malassezia* species in healthy skin and in dermatological conditions. *Int. J. Dermatol.* 55, 494–504. doi: 10.1111/ijd.13116
- Roman, J., Bagla, P., Ren, P., Blanton, L. S., and Berman, M. A. (2016). *Malassezia pachydermatis* fungemia in an adult with multibacillary leprosy. *Med. Mycol. Case Rep.* 12, 1–3. doi: 10.1016/j.mmc.2016.05.002
- Rosowski, E. E., Knox, B. P., Archambault, L. S., Huttenlocher, A., Keller, N. P., Wheeler, R. T., et al. (2018). The zebrafish as a model host for invasive fungal infections. *J. Fungi* 4:136. doi: 10.3390/jof4040136
- Schlemmer, K. B., Jesus, F. P. K., Loreto, É. S., Tondolo, J. S. M., Ledur, P. C., Dallabrida, A., et al. (2018). An experimental murine model of otitis and dermatitis caused by *Malassezia pachydermatis*. *Mycoses* 61, 954–958. doi: 10.1111/myc.12839
- Scully, L. R., and Bidochka, M. J. (2005). Serial passage of the opportunistic pathogen *Aspergillus flavus* through an insect host yields decreased saprobic capacity. *Can. J. Microbiol.* 51, 185–189. doi: 10.1139/w04-124
- Sheehan, G., and Kavanagh, K. (2019). Proteomic analysis of the responses of *Candida albicans* during infection of *Galleria mellonella* larvae. *J. Fungi* 5:7. doi: 10.3390/jof5010007
- Shibata, N., Saitoh, T., Tadokoro, Y., and Okawa, Y. (2009). The cell wall galactomannan antigen from *Malassezia furfur* and *Malassezia pachydermatis*

- contains β -1,6-linked linear galactofuranosyl residues and its detection has diagnostic potential. *Microbiology* 155, 3420–3429. doi: 10.1099/mic.0.029967-0
- Singkum, P., Suwanmanee, S., Pumeesat, P., and Luplertlop, N. (2019). A powerful *in vivo* alternative model in scientific research: *Galleria mellonella*. *Acta Microbiol. Immunol. Hung.* 66, 31–55. doi: 10.1556/030.66.2019.001
- Sparber, F., De Gregorio, C., Steckholzer, S., Ferreira, F. M., Dolowschiak, T., Ruchti, F., et al. (2019). The skin commensal yeast *Malassezia* triggers a type 17 response that coordinates anti-fungal immunity and exacerbates skin inflammation. *Cell Host Microbe* 25, 389–403. doi: 10.1016/j.chom.2019.02.002
- Stephens, J. M. (1962). Bactericidal activity of the blood of actively immunized wax moth larvae. *Can. J. Microbiol.* 8, 491–499. doi: 10.1139/m62-064
- Theelen, B., Cafarchia, C., Gaitanis, G., Bassukas, I. D., Boekhout, T., and Dawson, T. L. (2018). *Malassezia* ecology, pathophysiology, and treatment. *Med. Mycol.* 56, S10–S25. doi: 10.1093/mmy/myx134
- Tragiannidis, A., Bisping, G., Koehler, G., and Groll, A. H. (2010). Minireview: *Malassezia* infections in immunocompromised patients. *Mycoses* 53, 187–195. doi: 10.1111/j.1439-0507.2009.01814.x
- Trevijano-Contador, N., and Zaragoza, O. (2019). Immune response of *Galleria mellonella* against human fungal pathogens. *J. Fungi* 5:3. doi: 10.3390/jof5010003
- Tsai, C. J. Y., Loh, J. M. S., and Proft, T. (2016). *Galleria mellonella* infection models for the study of bacterial diseases and for antimicrobial drug testing. *Virulence* 7, 214–229. doi: 10.1080/21505594.2015.1135289
- Wojda, I. (2017). Immunity of the greater wax moth *Galleria mellonella*. *Insect Sci.* 24, 342–357. doi: 10.1111/1744-7917.12325
- Wuensch, A., Trusch, F., Iberahim, N. A., and van West, P. (2018). *Galleria mellonella* as an experimental *in vivo* host model for the fish-pathogenic oomycete *Saprolegnia parasitica*. *Fungal Biol.* 122, 182–189. doi: 10.1016/j.funbio.2017.12.011
- Xie, Z., Thompson, A., Sobue, T., Kashleva, H., Xu, H., Vasilakos, J., et al. (2012). *Candida albicans* biofilms do not trigger reactive oxygen species and evade neutrophil killing. *J. Infect. Dis.* 206, 1936–1945. doi: 10.1093/infdis/jis607
- Yamasaki, S., Matsumoto, M., Takeuchi, O., Matsuzawa, T., Ishikawa, E., Sakuma, M., et al. (2009). C-type lectin mInCLE is an activating receptor for pathogenic fungus, *Malassezia*. *Proc. Natl. Acad. Sci. U. S. A.* 106, 1897–1902. doi: 10.1073/pnas.0805177106
- Zomorodain, K., Mirhendi, H., Tarazooie, B., Kordbacheh, P., Zeraati, H., and Nayeri, F. (2008). Molecular analysis of *Malassezia* species isolated from hospitalized neonates. *Pediatr. Dermatol.* 25, 312–316. doi: 10.1111/j.1525-1470.2008.00673.x

Conflict of Interest: The authors declare that the research was conducted in the absence of any commercial or financial relationships that could be construed as a potential conflict of interest.

Copyright © 2020 Torres, Pinzón, Rey, Martínez, Parra Giraldo and Celis Ramírez. This is an open-access article distributed under the terms of the Creative Commons Attribution License (CC BY). The use, distribution or reproduction in other forums is permitted, provided the original author(s) and the copyright owner(s) are credited and that the original publication in this journal is cited, in accordance with accepted academic practice. No use, distribution or reproduction is permitted which does not comply with these terms.