



High-throughput screening of tick-borne pathogens in Europe

Lorraine Michelet¹, Sabine Delannoy², Elodie Devillers¹, Gérald Umhang³, Anna Aspan⁴, Mikael Juremalm⁵, Jan Chirico⁵, Fimme J. van der Wal⁶, Hein Sprong⁷, Thomas P. Boye Pihl⁸, Kirstine Klitgaard⁸, Rene Bødker⁸, Patrick Fach² and Sara Moutailler^{1*}

¹ UMR BIPAR, Animal Health Laboratory, ANSES, Maisons-Alfort, France

² IdentyPath Platform, Food Safety Laboratory, ANSES, Maisons-Alfort, France

³ Nancy Laboratory for Rabies and Wildlife, Wildlife EcoEpidemiology and Surveillance Unit, ANSES, Malzéville, France

⁴ Department of Bacteriology, National Veterinary Institute (SVA), Uppsala, Sweden

⁵ Department of Virology, Immunobiology and Parasitology, National Veterinary Institute (SVA), Uppsala, Sweden

⁶ Department of Infection Biology, Central Veterinary Institute, Wageningen UR, Lelystad, Netherlands

⁷ Laboratory for Zoonoses and Environmental Microbiology, National Institute for Public Health and Environment (RIVM), Bilthoven, Netherlands

⁸ National Veterinary Institute, DTU, Copenhagen, Denmark

Edited by:

Patrick Mavingui, Centre National de la Recherche Scientifique, France

Reviewed by:

Valerio Iebba, 'Sapienza' University of Rome, Italy

Max MAURIN, Université Aix-Marseille II, France

*Correspondence:

Sara Moutailler, UMR BIPAR, Animal Health Laboratory, ANSES, 23 avenue du général de Gaulle, 94706 Maisons-Alfort, France
e-mail: sara.moutailler@anses.fr

Due to increased travel, climatic, and environmental changes, the incidence of tick-borne disease in both humans and animals is increasing throughout Europe. Therefore, extended surveillance tools are desirable. To accurately screen tick-borne pathogens (TBPs), a large scale epidemiological study was conducted on 7050 *Ixodes ricinus* nymphs collected from France, Denmark, and the Netherlands using a powerful new high-throughput approach. This advanced methodology permitted the simultaneous detection of 25 bacterial, and 12 parasitic species (including; *Borrelia*, *Anaplasma*, *Ehrlichia*, *Rickettsia*, *Bartonella*, *Candidatus Neoehrlichia*, *Coxiella*, *Francisella*, *Babesia*, and *Theileria* genus) across 94 samples. We successfully determined the prevalence of expected (*Borrelia burgdorferi* sensu lato, *Anaplasma phagocytophilum*, *Rickettsia helvetica*, *Candidatus Neoehrlichia mikurensis*, *Babesia divergens*, *Babesia venatorum*), unexpected (*Borrelia miyamotoi*), and rare (*Bartonella henselae*) pathogens in the three European countries. Moreover we detected *Borrelia spielmanii*, *Borrelia miyamotoi*, *Babesia divergens*, and *Babesia venatorum* for the first time in Danish ticks. This surveillance method represents a major improvement in epidemiological studies, able to facilitate comprehensive testing of TBPs, and which can also be customized to monitor emerging diseases.

Keywords: tick borne diseases, molecular epidemiology, surveillance, Europe, microfluidic analyses

INTRODUCTION

In Europe, ticks are the most important vectors of human and animal infectious diseases, and transmit more pathogens than any other arthropod (Jongejan and Uilenberg, 2004; Colwell et al., 2011). These diseases are normally maintained in stable natural cycles involving ticks, wildlife, and/or domestic animals, whereas humans are accidental hosts (De La Fuente et al., 2008). *Ixodes ricinus* is the most widespread and abundant European tick species capable of transmitting several diseases of both medical and veterinary importance (Heyman et al., 2010). *Ixodes ricinus* has the greatest impact on human public health by transmitting Lyme borreliosis etiological agents, caused by at least four *Borrelia* genospecies in Europe: *Borrelia burgdorferi* sensu stricto, *Borrelia garinii*, *Borrelia afzelii*, and *Borrelia spielmanii*. The relapsing fever spirochete, *Borrelia miyamotoi*, is transmitted by the same *Ixodes* species and has recently been described in ticks as well as in a human case from the Netherlands (Hovius et al., 2013). In addition to *Borrelia* transmission, *Ixodes ricinus* can transmit many other pathogens, including: *Anaplasma* spp. such as *Anaplasma phagocytophilum*, *Rickettsia* spp. from the spotted

fever group, *Candidatus Neoehrlichia mikurensis*, *Ehrlichia* spp., *Bartonella* spp., *Francisella tularensis*, and *Coxiella burnetii* (Parola and Raoult, 2001; Cotte et al., 2008; Fertner et al., 2012). Ticks can also transmit *Babesia* genus protozoa, such as *Babesia divergens* or the newly described *Babesia venatorum* (sp. EU1) and *Theileria* spp. (Bishop et al., 2004; Bonnet et al., 2007a).

Increased human travel, animal transport, and environmental changes are responsible for the emergence and/or spread of numerous tick-borne pathogens (TBPs) in Europe (Dantas-Torres et al., 2012). Therefore, effective tick-based surveillance is essential for monitoring human and/or animal disease emergence (Diuk-Wasser et al., 2014). Ticks harbor a variety of pathogens, some of which are obligate intracellular organisms and/or are impossible to artificially culture. Consequently, molecular approaches are thus indispensable for TBP identification. In conventional amplification-based assays, TBP detection occurs for a restricted number of target pathogens known to be transmitted by certain tick species collected at particular sites (Cotte et al., 2010). The main disadvantage of this approach is the limited number of different targets that can be tested, given the quantity

of DNA required for one PCR. To improve surveillance of human and animal diseases, new investigative tools are required which perform high-throughput testing of a wider panel of TBPs.

Therefore, the aim of this study was to conduct high-throughput monitoring of tick-borne human and animal pathogens in Europe. Accordingly, we developed a novel high-throughput epidemiological surveillance method to identify both major and neglected European TBPs (bacteria and parasites). This tool utilizes a microfluidic system (BioMark™ dynamic array system, Fluidigm) that is capable of performing parallel real-time PCRs using either 96.96 chips or 48.48 chips resulting in either 9216 or 2304 individual reactions, respectively (Liu et al., 2003). In a single experiment, 94 ticks or pools of ticks can be tested for the presence of 25 bacteria and 12 parasites, as well as confirmation of the tick species. As only a few microliters of sample are required for each test, this system can also be used in conjunction with the typically low-volume DNA extracts prepared from ticks. Then we applied this method to screen 7050 *Ixodes ricinus* collected from three European countries; France, Denmark, and the Netherlands. We demonstrated increased surveillance efficiency of major and neglected TBPs, and improved monitoring of the emerging diseases important to public and animal health.

MATERIALS AND METHODS

STUDY AREA AND TICK COLLECTION

A total of 7050 *Ixodes ricinus* nymphs, from six different locations in France, Denmark, and the Netherlands, divided in 47 pools of 25 nymphs per site, were studied. Questing nymphs were collected using the flagging technique (Vassallo et al., 2000). In France, ticks were collected from Murbach (F1) (N 47° 55', E 7° 9') and Wasselonne (F2) (N 48° 37', E 7° 27') in 2011. In Denmark, ticks were collected from Vestskoven (D1) (N 55° 42', E 12° 21') and Grib Skov (D2) (N 56° 02', E 12° 20') in 2012. In the Netherlands, ticks were collected from the Duin en Kruidberg area (N1) (N 52° 17', E 4° 49') in 2010 and 2011, and from the Austerlitz area (N2) (N 52° 5', E 5° 18') over a period from 2008 to 2012.

DNA EXTRACTION

Ticks were morphologically identified to species level (Pérez-Eid, 2007) and preserved at -80°C . After washing once in 70% ethanol for 5 min and twice in distilled water for 5 min, pools of 25 nymphs were crushed in 300 μl of DMEM with 10% fetal calf serum and six steel balls using the homogenizer Precellys®24 Dual (Bertin, France) at 5500 rpm for 20 s.

DNA was then extracted using the Wizard genomic DNA purification kit (Promega, France). Total DNA per sample was eluted in 50 μl of rehydration solution and stored at -20°C until further use.

PRIMERS AND PROBE DESIGN

Pathogens, targeted genes and primers/probe sets are listed in **Table 1**. For each pathogen or tick, primers and probes were specifically designed for this study. Each primer or probe set was validated on dilution range of several positive controls (**Table 1**) and real-time TaqMan PCRs on a LightCycler® 480 (LC480) (Roche Applied Science, Germany). Real-time PCR assays were performed in a final volume of 12 μl using the LightCycler® 480

Probe Master Mix 1 \times (Roche Applied Science, Germany), with primers and probes at 200 nM and 2 μl of control DNA. Thermal cycling conditions were as follows: 95°C for 5 min, 45 cycles at 95°C for 10 s and 60°C for 15 s and one final cooling cycle at 40°C for 10 s. Four pathogens (*Borrelia valaisiana*, *Francisella tularensis*, *Coxiella burnetii*, and *Theileria annulata*) were targeted by real-time PCRs on two different sequences to improve detection.

DNA PRE-AMPLIFICATION

For DNA pre-amplification, the TaqMan PreAmp Master Mix (Applied Biosystems, France) was used according to the manufacturer's instructions. Primers (except those which target tick DNA) were pooled combining equal volume of primers (200 nM final each). The reaction was performed in a final volume of 5 μl containing 2.5 μl TaqMan PreAmp Master Mix, 1.2 μl pooled primers mix and 1.3 μl DNA, with one cycle at 95°C for 10 min, 14 cycles at 95°C for 15 s and 4 min at 60°C . At the end of the cycling program the reactions were diluted 1:10. Pre-amplified DNAs were stored at -20°C until needed.

HIGH-THROUGHPUT REAL-TIME PCR SYSTEM

The BioMark™ real-time PCR system (Fluidigm, USA) was used for high-throughput microfluidic real-time PCR amplification using either the 96.96 or the 48.48 dynamic arrays (Fluidigm). These chips dispense 96 (or 48) PCR mixes and 96 (or 48) samples into individual wells, after which on-chip microfluidics assemble PCR reactions in individual chambers prior to thermal cycling resulting in either 9216 or 2304 individual reactions.

Amplifications were performed using 6-carboxyfluorescein (FAM)- and black hole quencher (BHQ1)-labeled TaqMan probes with TaqMan Gene expression master mix in accordance with manufacturer's instructions (Applied Biosystems, France). A 6 μl sample mix was prepared per sample, containing 3 μl TaqMan® Gene expression Master Mix (Applied Biosystems, Foster City, CA), 0.3 μl sample Loading Reagent (Fluidigm PN 85000746) and 2.7 μl of diluted pre-amplified DNA. A TaqMan® primer assay was prepared for each target, containing 18 μM of each primer and 4 μM of probe. Three microliters of these primer assays were mixed with equal volumes of Dynamic Array (DA) assay loading reagent (Fluidigm PN 85000736) to make assay mixes (9 μM primers and 2 μM probe). Prior to loading the samples and assay mixes into the inlets, the chip was primed in the IFC Controller HX apparatus. Five μl of sample mixes, prepared as described, were then loaded into each sample inlet of the dynamic array chip and 5 μl of assay mixes were loaded into assay inlets. The chip was then placed on the IFC Controller HX for loading and mixing. After approximately 45 min the chip was ready for thermal cycling and detection of the reaction products on the Biomark. PCR cycling comprised of 2 min at 50°C , 10 min at 95°C , followed by 40 cycles of 2-step amplification of 15 s at 95°C , and 1 min at 60°C . Data were acquired on the BioMark™ Real-Time PCR System and analyzed using the Fluidigm Real-time PCR Analysis software to obtain crossing point (CP) values.

For microfluidic tool evaluation on field samples, the assays were performed in duplicate. Two negative water controls were included per chip. *Ixodes ricinus* DNA served to confirm the tested

Table 1 | List of pathogens, tick species, targets, primers/probe sets, and positive controls.

Species	Target	Name	Sequence	Length (bp)	Positive control
<i>Borrelia burgdorferi</i> sensu stricto	<i>rpoB</i>	Bo_bu_rpoB_F Bo_bu_rpoB_R Bo_bu_rpoB_P	GCTTACTCACAAAAGGCGTCTT GCACATCTTACTTCAAATCCT AATGCTCTTGACCAGGAGGACTTTCA	83	Culture of B31 strain
<i>Borrelia garinii</i>	<i>rpoB</i>	Bo_ga_rpoB_F Bo_ga_rpoB_R Bo_ga_rpoB_P	TGGCCGAAGTTACCCACAAAA ACATCTTACTTCAAATCCTGC TCTATCTTTGAAAGTCCCCCTGGTCC	88	Culture of NE11 strain
<i>Borrelia afzelii</i>	<i>fla</i>	Bo_af_flA_F Bo_af_flA_R Bo_af_flA_P	GGAGCAAATCAAGATGAAGCAAT TGAGCACCTCTTGAACAGG TGCAGCCTGAGCAGCTTGAGCTCC	116	Culture of VS641 strain
<i>Borrelia valaisiana</i>	<i>ospE</i>	Bo_val_ospE_F Bo_val_ospE_R Bo_val_ospE_P	GAACTTAGGGAGTATCTTATGAAT CTTGCCCCCTTAAACTAATATCT TGCTCACTCAACCTGCCTTGCTCGC	143	Culture of VS116 strain
	<i>ospA</i>	Bo_va_ospA_F Bo_va_ospA_R Bo_va_ospA_P	ACTCACAATGACAGATGCTGAA GCTTGCTTAAAGTAACAGTACCT TCCGCCTACAAGATTTCTGGAAGCTT	135	
<i>Borrelia miyamotoi</i>	<i>glpQ</i>	B_miya_glpQ_F B_miya_glpQ_R B_miya_glpQ_P	CACGACCCAGAAATTGACACA GTGTGAAGTCAGTGGCGTAAT TCGTCCGTTTTCTCTAGCTCGATTGGG	94	Plasmid ^a
<i>Borrelia spielmanii</i>	<i>fla</i>	Bo_spi_flA_F Bo_spi_flA_R Bo_spi_flA_P	ATCTATTTTCTGGTGAGGGAGC TCCTTCTTGTGAGCACCTTC TTGAACAGGCGCAGTCTGAGCAGCTT	71	Plasmid ^a
<i>Borrelia lusitaniae</i>	<i>rpoB</i>	Bo_lus_rpoB_F Bo_lus_rpoB_R Bo_lus_rpoB_P	CGAACTTACTCATAAAAGGCGTC TGGACGTCTTACTTCAAATCC TTAATGCTCTCGGGCCTGGGGGACT	87	Culture of Poti-B1 strain
<i>Borrelia bissetii</i>	<i>rpoB</i>	Bo_bi_rpoB_F Bo_bi_rpoB_R Bo_bi_rpoB_P	GCAACCAGTCAGCTTTCACAG CAAATCCTGCCCTATCCCTTG AAAGTCCTCCCGCCCAAGAGCATTAA	118	Plasmid ^a
<i>Borrelia</i> spp.	23S rRNA	Bo_bu_sl_23S_F Bo_bu_sl_23S_R Bo_bu_sl_23S_P	GAGTCTTAAAAGGCGATTAGT CTTCAGCCTGGCCATAAATAG AGATGTGGTAGACCCGAAGCCGAGT	73	
<i>Anaplasma marginale</i>	<i>msp1b</i>	An_ma_msp1_F An_ma_msp1_R An_ma_msp1_P	CAGGCTTCAAGCGTACAGTG GATATCTGTGCCTGGCCTTC ATGAAAGCCTGGAGATGTTAGACCGAG	85	Experimentally infected cow
<i>Anaplasma platys</i>	<i>groEL</i>	An_pla_groEL_F An_pla_groEL_R An_pla_groEL_P	TTCTGCCGATCCTTGAAAACG CTTCTCCTTCTACATCCTCAG TTGCTAGATCCGGCAGGCCTCTGC	75	Infected dog blood
<i>Anaplasma ovis</i>	<i>msp4</i>	An_ov_msp4_F An_ov_msp4_R An_ov_msp4_P	TCATTGACATGCGTGAGTCA TTTGCTGGCGCACTCACATC AGCAGAGAGACCTCGTATGTTAGAGGC	92	Plasmid ^a
<i>Anaplasma centrale</i>	<i>groEL</i>	An_cen_groEL_F An_cen_groEL_R An_cen_groEL_P	AGCTGCCCTGCTATACACG GATGTTGATGCCCAATTGCTC CTTGCACTCTAGACGAGGTAAGGGG	79	Plasmid ^a

(Continued)

Table 1 | Continued

Species	Target	Name	Sequence	Length (bp)	Positive control
<i>Anaplasma phagocytophilum</i>	<i>msp2</i>	An_ph_msp2_F An_ph_msp2_R An_ph_msp2_P	GCTATGGAAGGCAGTGTGG GTCTTGAAGCGCTCGTAACC AATCTCAAGCTCAACCCTGGCACCAC	77	Infected embryonic cells of <i>Ixodes scapularis</i>
<i>Ehrlichia ruminantium</i>	<i>dsb</i>	Eh_ru_dsb_F Eh_ru_dsb_R Eh_ru_dsb_P	CTCAGAGGGTAATAGATTTACTC GTATGCAATATCTTCAAGCTCAG ACTACAGGCCAAGCACAAGCAGAAAAGA	107	Culture of Gardel strain
<i>Ehrlichia canis</i>	<i>dsb</i>	Eh_ca_dsb_F Eh_ca_dsb_R Eh_ca_dsb_P	AATACTGGTGAAGTCTTCACTCA GTTGCTTGTAAATGTAGTGCTGC AAGTTGCCCAAGCAGCACTAGCTGTAC	110	Plasmid ^a
<i>Ehrlichia chaffeensis</i>	<i>dsb</i>	Eh_ch_dsb_F Eh_ch_dsb_R Eh_ch_dsb_P	TATTGCTAATTACCCTCAAAAAGTC GAGCTATCCTCAAGTTCAGATTT ATTGACCTCCTAACTAGAGGGCAAGCA	117	Infected wild <i>Amblyomma americanum</i>
<i>Candidatus Neoehrlichia mikurensis</i>	<i>groEL</i>	Neo_mik_groEL_F Neo_mik_groEL_R Neo_mik_groEL_P	AGAGACATCATTCGCATTTTGGGA TTCCGGGTGACCATAAGGCTT AGATGCTGTTGGATGTACTGCTGGACC	96	Infected tick
<i>Rickettsia conorii</i>	23S-5S ITS	Ri_co_ITS_F Ri_co_ITS_R Ri_co_ITS_P	CTCACAAAGTTATCAGGTTAAATAG CGATACTCAGCAAATAATTCTCG CTGGATATCGTGGCAGGGCTACAGTAT	118	Culture
<i>Rickettsia slovaca</i>	23S-5S ITS	Ri_slo_ITS_F Ri_slo_ITS_R Ri_slo_ITS_P	GTATCTACTCACAAAGTTATCAGG CTTAACCTTTACTACAATACTCAGC TAATTTTCGCTGGATATCGTGGCAGGG	138	Culture
<i>Rickettsia massiliae</i>	23S-5S ITS	Ri_ma_ITS_F Ri_ma_ITS_R Ri_ma_ITS_P	GTTATTGCATCACTAATGTTACTG GTTAATGTTGTTGCAGACTCAA TAGCCCCGCCACGATATCTAGCAAAA	128	Culture
<i>Rickettsia helvetica</i>	23S-5S ITS	Ri_he_ITS_F Ri_he_ITS_R Ri_he_ITS_P	AGAACCGTAGCGTACACTTAG GAAAACCCCTACTTCTAGGGGT TACGTGAGGATTTGAGTACCGGATCGA	79	Culture
Spotted fever group	<i>gltA</i>	SFG_gltA_F SFG_gltA_R SFG_gltA_P	CCTTTTGTAGCTCTTCTCATCC GCGATGGTAGGTATCTTAGCAA TGGCTATTATGCTTGGGCTGTGGT	145	
<i>Bartonella henselae</i>	<i>pap31</i>	Bar_he_pap31_F Bar_he_pap31_R Bar_he_pap31_P	CCGCTGATCGCATTATGCCT AGCGATTTCTGCATCATCTGCT ATGTTGCTGGTGGTGTTCCTATGCAC	107	Culture of Berlin 1 strain
<i>Bartonella quintana</i>	<i>bqtR</i>	Bar_qu_bqt_F Bar_qu_bqt_R Bar_qu_bqt_P	TCCATCACAAGATCTCCGCG CGTGCCAATGCTCGTAACCA TTTAAGAGAGGAGGTAGAAGAGGCTCC	80	Culture
<i>Francisella tularensis</i>	<i>tul4</i>	Fr_tu_tul4_F Fr_tu_tul4_R Fr_tu_tul4_P	ACCCACAAGGAAGTGAAGATTA GTAATTTGGGAAGCTTGTATCATG AATGGCAGGCTCCAGAAGTTCTAAGT	76	Culture of CIP 5612T strain
	<i>fopA</i>	Fr_tu_fopA_F Fr_tu_fopA_R Fr_tu_fopA_P	GGCAAATCTAGCAGGTCAAGC CAACACTTGCTTGAACATTTCTAG AACAGGTGCTTGGGATGTGGGTGGTG	91	

(Continued)

Table 1 | Continued

Species	Target	Name	Sequence	Length (bp)	Positive control
<i>Coxiella burnetii</i>	<i>idc</i>	Co_bu_icd_F	AGGCCCGTCCGTTATTTTACG	74	Culture
		Co_bu_icd_R	CGGAAAATCACCATATTCACCTT		
		Co_bu_icd_P	TTCAGGCGTTTTGACCGGGCTTGGC		
	IS1111	Co_bu_IS111_F	TGGAGGAGCGAACCATTTGGT	86	
		Co_bu_IS111_R	CATACGGTTTTGACGTGCTGC		
		Co_bu_IS111_P	ATCGGACGTTTATGGGGATGGGTATCC		
<i>Babesia divergens</i>	<i>hsp70</i>	Bab_di_hsp70_F	CTCATTGGTGACGCCGCTA	83	Culture of RFS strain
		Bab_di_hsp70_R	CTCCTCCCATAAGCCTCTT		
		Bab_di_hsp70_P	AGAACCAGGAGGCCCGTAACCCAGA		
<i>Babesia caballi</i>	<i>Rap1</i>	Ba_cab_rap1_F	GTTGTTCCGGCTGGGGCATC	94	Plasmid ^a
		Ba_cab_rap1_R	CAGGCGACTGACGCTGTGT		
		Ba_cab_rap1_P	TCTGTCCCAGTGTCAAGGGGCAGGT		
<i>Babesia canis</i>	18S rRNA	Ba_ca_RNA18S_F	TGGCCGTTCTTAGTTGGTGG	104	Infected dog blood
		Ba_ca_RNA18S_R	AGAAGCAACCGGAAACTCAAATA		
		Ba_ca_RNA18S_P	ACCGGCAC TAGTTAGCAGGTTAAGGTC		
<i>Babesia vogeli</i>	<i>hsp70</i>	Ba_vo_hsp70_F	TCACTGTGCTGCGTACTTC	87	Infected dog blood
		Ba_vo_hsp70_R	TGATACGCATGACGTTGAGAC		
		Ba_vo_hsp70_P	AACGACTCCCAGCGCCAGGCCAC		
<i>Babesia venatorum</i> (sp. EU1)	18S rRNA	Bab_EU_RNA18S_F	GCGCGCTACACTGATGCATT	91	Plasmid ^a
		Bab_EU_RNA18S_R	CAAAAATCAATCCCCGTCACG		
		Bab_EU_RNA18S_P	CATCGAGTTTAACTCCTGTCCCAGAAAGG		
<i>Babesia microti</i>	<i>CCTeta</i>	Bab_mi_CCTeta_F	ACAATGGATTTTCCCCAGCAAAA	145	Culture of R1 strain
		Bab_mi_CCTeta_R	GCGACATTTCCGGCAACTTATATA		
		Bab_mi_CCTeta_P	TACTCTGGTGCAATGAGCGTATGGGTA		
<i>Babesia bovis</i>	<i>CCTeta</i>	Ba_bo_CCTeta_F	GCCAAAGTAGTGGTAGACTGTA	100	Culture of MO7 strain
		Ba_bo_CCTeta_R	GCTCCGTCATTGGTTATGGTA		
		Ba_bo_CCTeta_P	TAAAGACAACACTGGGTCCGCGTGG		
<i>Babesia bigemina</i>	18S rRNA	Ba_big_RNA18S_F	ATTCCGTTAACGAACGAGACC	99	Plasmid ^a
		Ba_big_RNA18S_R	TTCCCCACGCTTGAAGCA		
		Ba_big_RNA18S_P	CAGGAGTCCCTCTAAGAAGCAAACGAG		
<i>Babesia major</i>	<i>CCTeta</i>	Ba_maj_CCTeta_F	CACTGGTGCCTGATCCAA	75	Plasmid ^a
		Ba_maj_CCTeta_R	TCCTCGAAGCATCCACATGTT		
		Ba_maj_CCTeta_P	AACACTGTCAACGGCATAAGCACCGAT		
<i>Babesia ovis</i>	18S rRNA	Ba_ov_RNA18S_F	TCTGTGATGCCCTTAGATGTC	92	Plasmid ^a
		Ba_ov_RNA18S_R	GCTGGTTACCCGCGCCTT		
		Ba_ov_RNA18S_P	TCGGAGCGGGTCAACTCGATGCAT		
<i>Theileria equi</i>	<i>ema1</i>	Th_eq_ema1_F	GGTCCGGCAAGAAGCACA	66	Plasmid ^a
		Th_eq_ema1_R	CTTGCCATCGACGACCTTGA		
		Th_eq_ema1_P	CTTCAAGGCTCCAGGCAAGCGCGT		
<i>Theileria annulata</i>	18S rRNA	Th_an_18S_F	GCGGTAATTCCAGCTCCAATA	126	Culture of D7 strain
		Th_an_18S_R	AAACTCCGTCCGAAAAAAGCC		
Th_an_18S_P		ACATGCACAGACCCAGAGGGACAC			
	<i>Tams1</i>	Th_an_Tams1_F	CGATTACAAACCAGTTGTCGAC	82	
		Th_an_Tams1_R	GTAAGGACTGATGAGAAGACG		
		Th_an_Tams1_P	TGAGTACTGAGGCGAAGACTGCAAGG		

(Continued)

Table 1 | Continued

Species	Target	Name	Sequence	Length (bp)	Positive control
<i>Ixodes ricinus</i>	ITS2	lx_ri ITS2_F	CGAAACTCGATGGAGACCTG	77	Tick
		lx_ri ITS2_R	ATCTCCAACGCACCGACGT		
		lx_ri ITS2_P	TTGTGGAATCCCCTCGCACGTTGAAC		
<i>Ixodes persulcatus</i>	ITS2	lx_pe ITS2_F	TGCGTTGCGTCTTCTCTTGTT	111	Tick
		lx_pe ITS2_R	TCGATAAAACCAGGTAGGAGGA		
		lx_pe ITS2_P	TTTCGGAGCAAGTACAGAGGGAGCAAA		
<i>Ixodes hexagonus</i>	ITS2	lx_hex ITS2_F	CCGCCGTTGGGATTACGA	90	Tick
		lx_hex ITS2_R	GTTCTCCGACCCACTTTC		
		lx_hex ITS2_P	AGCGCCTTAAAAGAATCGGCAACCTCT		
<i>Dermacentor reticulatus</i>	ITS2	De_re ITS2_F	AACCCTTTTCCGCTCCGTG	83	Tick
		De_re ITS2_R	TTTTGCTAGAGCTCGACGTAC		
		De_re ITS2_P	TACGAAGGCAAACAACGCAAACCTGCCA		
<i>Dermacentor marginatus</i>	ITS2	De_ma ITS2_F	GCACGTTGCGTTGTTGCC	139	Tick
		De_ma ITS2_R	CCGCTCCGCGCAAGAATCT		
		De_ma ITS2_P	TTCGGAGTACGTCGAGCTCTAGCAGA		
<i>Escherichia coli</i>	eae	eae-F2	CATTGATCAGGATTTTTCTGGTGATA	102	Culture of EDL933 strain
		eae-R	CTCATGCGGAAATAGCCGTTA		
		eae-P	ATAGTCTCGCCAGTATTGCCACCAATACC		

^aPlasmids are recombinant pBluescript IISK+ containing the target gene.

tick species and as a DNA extraction control. To determine if factors present in the sample could inhibit the PCR, *Escherichia coli* strain EDL933 DNA was added to each sample as an internal inhibition control. Primers and probe specific for the *E. coli* eae gene (Nielsen and Andersen, 2003) were used for an internal control.

VALIDATION OF THE RESULTS BY PCR AND SEQUENCING

Conventional PCR using primers targeting different genes or regions than those of the BioMark™ system (Table 2), were used to confirm the presence of pathogenic DNA in the field samples. Amplicons were sequenced by Eurofins MWG Operon (Germany), and then assembled using BioEdit software (Ibis Biosciences, Carlsbad). An online BLAST (National Center for Biotechnology Information) was used to compare results with published sequences listed in GenBank sequence databases.

PREVALENCE ESTIMATION

Prevalences were estimated assuming perfect sensitivity and specificity of pathogen detection using the online statistical program “Pooled prevalence for fixed pool size and perfect test” Method 2 (AusVet Animal Health Service <http://epitools.ausvet.com.au/content.php?page=home>). Point estimates were based on the maximum likelihood method developed by Kline et al. (1989). Exact 95% confidence intervals were obtained by assuming binomial distribution for the number of positive pools (Cowling et al., 1999). If all pools were positive, prevalence was recorded as >14.3%, as the highest prevalence that can be distinguished from 100% when testing 47 pools of 25 ticks. If all pools were negative, prevalence was recorded as <0.25%, since the 95% probability of sampling n negative ticks from a population with prevalence p is given as $(1 - p)^n$.

RESULTS

IMPLEMENTATION OF HIGH-THROUGHPUT REAL-TIME PCR SYSTEM TO DETECT TBPs

Primers and probes were specially designed to detect 37 TBPs and 4 tick species (Table 1). Each set of primers and probes specifically identified their corresponding positive control samples via Taqman real-time PCRs on a LightCycler 480 apparatus. Resulting CP values varied from 8 to 40 depending on sample type. Among the 37 TBP DNAs used as positive controls, 10 were not detected by the BioMark™ system. Consequently, an initial step of DNA pre-amplification was added, which enabled detection of all positive controls. Subsequently all tick DNA samples were pre-amplified prior to pathogen detection on the BioMark™ system. The specificity of each primer set was then evaluated using 37 TBPs, and 4 tick species positive controls (Figure 1). Results demonstrated high specificity for each primers/probe set after pre-amplification, using a cut-off of 30 CP (Figure 1). Indeed, 45 assays were only positive for the corresponding positive control. Three assays showed cross-reactivity with other pathogen targets. The assay for *B. burgdorferi* sensu stricto cross-reacted with *B. garinii* and *B. valaisiana* DNA. The assay targeting *R. conorii* cross-reacted with *R. massiliae*, as well as with *R. slovaca* DNA, cross-reactivity was also observed reciprocally.

LARGE SCALE PREVALENCE STUDY OF TBPs

A total of 7050 nymphs, in 47 pools of 25, from six different European sites were tested using the BioMark™ system. Among the targeted pathogens, 15 bacteria (*B. lusitanae*, *B. bissetii*, *A. marginale*, *A. platys*, *A. ovis*, *A. centrale*, *E. ruminantium*, *E. canis*, *E. chaffeensis*, *R. conorii*, *R. slovaca*, *R. massiliae*,

Table 2 | Primers used to confirm the presence of pathogenic DNA in ticks.

Pathogen	Targeted gene	Primer name	Sequence (5' → 3')	Amplicon size (bp)	References
<i>Borrelia</i> spp.	<i>clpA</i>	clpAF1240	GATAGATTTCTCCAGACAAAG	975	Margos et al., 2008
		clpAR2214	TTCATCTATTAAGCTTTCCC	850	
		clpAF1255	GACAAAGCTTTTGATATTTAG		
		clpAR2104	CAAAAAAAAAACATCAAATTTCTATCTC		
<i>Bartonella</i> spp.	16S-23S IGS	P-bhenfa	TCTTCGTTTCTCTTTCTTCA	186	Rampersad et al., 2005
		P-benr1	CAAGCGCGCGCTCTAACC	149	
		N-bhenf1a	GATGATCCCAAGCCTTCTGGC		
		N-benr	AACCAACTGAGCTACAAGCC		
<i>Anaplasma phagocytophilum</i>	<i>msp4</i>	MSP4AP5 MSP4AP3	ATGAATTACAGAGAATTGCTTGTAGG TTAATTGAAAGCAAATCTTGCTCCTATG	849	De La Fuente et al., 2005
<i>Candidatus N. mikurensis</i>	<i>groEL</i>	NM 1152as NM 128s	TTCTACTTTGAACATTTGAAGAATTACTAT AACAGGTGAAACACTAGATAAGTCCAT	1024	Diniz et al., 2011
<i>Rickettsia</i> spp.	<i>gltA</i>	RsfG877 RsfG1258	GGGGGCTGCTCACGGCGG ATTGCAAAAAGTACAGTGAACA	381	Regnery et al., 1991
<i>Babesia</i> spp.	18S rRNA	BabGF2 BabGR2	GYTTGTAATTGGAATGATGG CCAAAGACTTTGATTCTCTC	559	Bonnet et al., 2007b

B. quintana, *F. tularensis*, and *C. burnetii*) and 10 parasites (*B. caballii*, *B. canis*, *B. vogeli*, *B. microti*, *B. bovis*, *B. bigemina*, *B. major*, *B. ovis*, *T. equi*, and *T. annulata*) were not detected in any country. The number of positive pools for each pathogen is presented in **Table 3** and the prevalence was estimated at each site of collection (**Table 4**).

In order to confirm the results obtained on the BioMark™ system and to validate this new method, classical PCR and sequencing were performed on extracted DNA for a subset of field samples. All sequences showed at least 99% identity with reference sequences (**Table 5**), and have been deposited in GenBank (Accession numbers; KF447526-KF447532, and KF679796). Due to primers which can only detect *Borrelia* and *Babesia* at the genus level, only those samples which tested positive for a single species (and not potentially co-infected samples) were confirmed (**Table 2**).

France

Among the seven genospecies of *Borrelia burgdorferi* s.l., four were detected in both French sites. *Borrelia afzelii* is the dominant genospecies with a prevalence of 1.8% in F2, as previously described (Beytout et al., 2007). The other genospecies (*B. garinii*, *B. valaisiana*, and *B. spielmanii*) had prevalence rates of under 1%. *B. burgdorferi* s.s. was only detected in F2 at low prevalence (0.1%). The relapsing fever spirochete *B. miyamotoi* was detected in both sites, with very different prevalences (2.5% in F1 and 0.9% in F2) and was the most abundant *Borrelia* species in F1. This spirochete has already been detected in France, but only in female adult ticks (Reis et al., 2011). *Anaplasma phagocytophilum* was more abundant in F2 (1.2%) and its estimated prevalence is in accordance with a previous study (Beytout et al.,

2007). *Candidatus N. mikurensis* was more abundant in F1 (1.3%). This pathogen has already been described in bank voles in France (Vayssier-Taussat et al., 2012) but this is the first estimation of its prevalence in French ticks. *Rickettsia helvetica* was the only *Rickettsiaceae* identified in this study and was detected in 46/47 pools, showing the highest prevalence (14.3%) of all tested pathogens, much higher than data reported in the literature (1.4–6%) (Cotte et al., 2010). *Bartonella henselae* was only detected in F2 (0.1%), in a single pool. Among all assessed parasitic species, *Babesia venatorum* was the only parasite detected in France with a low prevalence (0.2 and 0.3%) as previously described (Reis et al., 2011).

Denmark

Five genospecies of *B. burgdorferi* s.l. were detected in Danish ticks, four previously described (Skarphedinsson et al., 2007; Vennestrom et al., 2008) and one, *B. spielmanii*, detected for the first time. In previous studies, *B. afzelii* was the most prevalent genospecies (Skarphedinsson et al., 2007; Vennestrom et al., 2008). In our study, *B. afzelii* was the most prevalent (14.3%) in D1, while *B. garinii* was the most abundant (5.7%) in D2. *B. burgdorferi* s.s. was detected in both sites with similar prevalences (4.2% and 3.8%), as well as *B. valaisiana*, and *B. spielmanii* (approximately 1%). *B. lusitaniae* was identified in a previous study (Vennestrom et al., 2008), but was not encountered in the present study. Relapsing fever-causing *B. miyamotoi* was detected for the first time in Danish *I. ricinus* with variable prevalences between the two sites (1.3% in D1 and 0.2% in D2). The estimated prevalence of *A. phagocytophilum* was approximately 30 times higher in D2 (11.9%) than in D1 (0.4%) whereas its prevalence was estimated at 15% in a previous study (Skarphedinsson et al.,

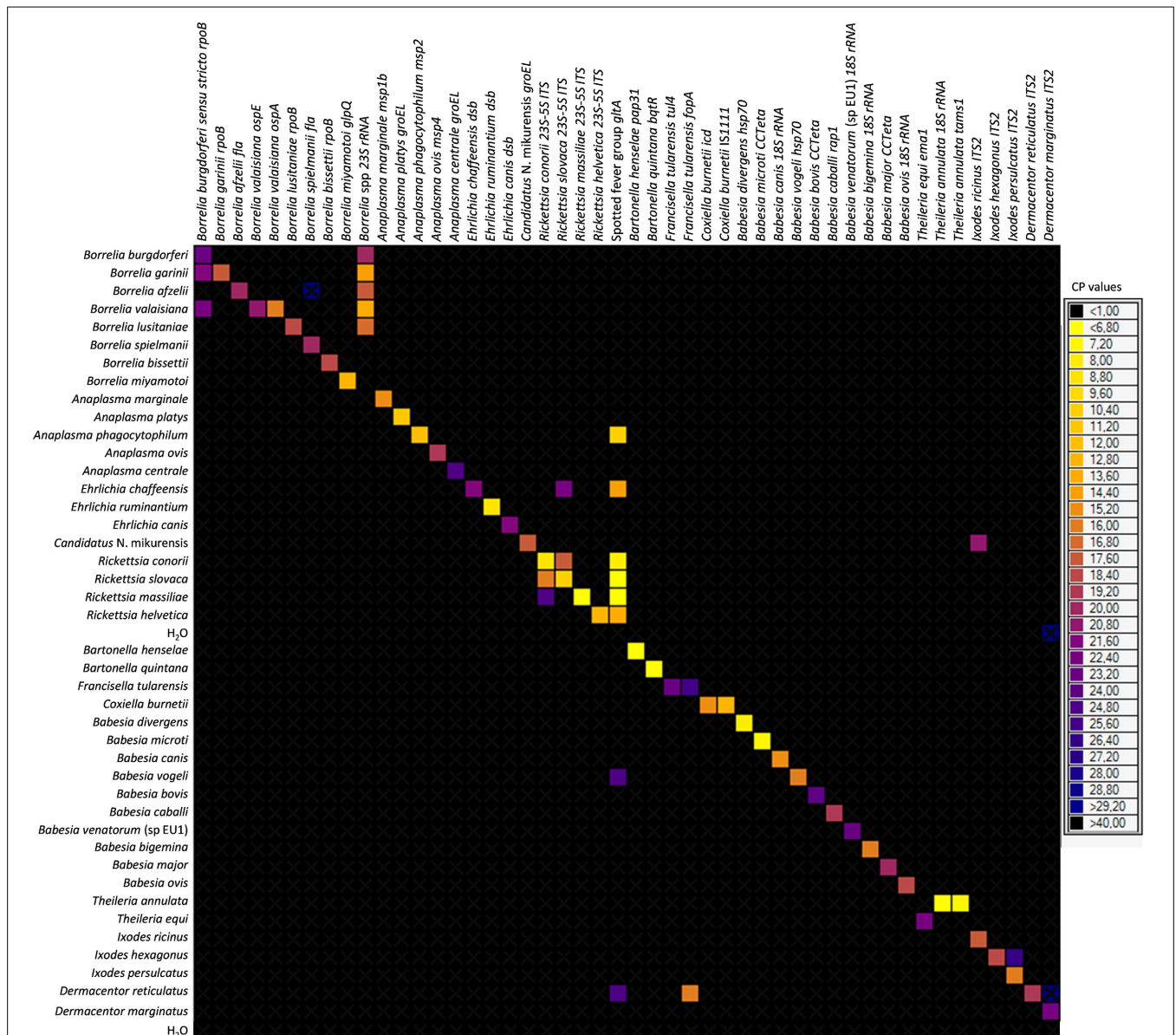


FIGURE 1 | BioMark™ dynamic array system specificity test (48.48 chip). Each square corresponds to a single real-time PCR reaction, where rows indicate the pathogen in the positive control and columns represent the targets of each primers/probe set. CP values

for each reaction are indicated by color; the corresponding color scale is presented in the legend on the right. The darkest shade of blue and black squares are considered as negative reactions with $CP > 30$.

2007). *Candidatus N. mikurensis* was detected with a low prevalence in the Danish sites (1% in D1 and 0.2% in D2) in agreement with a previous report (Fertner et al., 2012). *Rickettsia helvetica* is the only species of *Rickettsia* spp. reported in Denmark. This bacterium was respectively identified in 44 and 46 pools of the samples, corresponding to high prevalences of 10.4% in D1 and 14.3% in D2. In previous reports, the prevalence of *R. helvetica* appeared to vary considerably, ranging from 1.4 to 13% (Svendsen et al., 2009; Kantso et al., 2010). Two parasitic species were found for the first time in the Danish samples, *B. divergens* (0.1% in D1 and D2) and *B. venatorum* (1.4% in D1 and 0.5% in D2). These parasites have never previously been reported in

Danish ticks until now, even if *B. divergens* is frequently found in cattle.

The Netherlands

Five genospecies of *B. burgdorferi* s.l. were detected in Dutch ticks. *B. garinii* and *B. afzelii* were the more abundant genospecies while the other genospecies (*B. burgdorferi*, *B. valaisiana*, and *B. spielmanii*) were found less frequently, as previously described (Tijssen-Klasen et al., 2011; Sprong et al., 2012a). *B. garinii* and *B. afzelii* were detected with equal prevalences in N1 (2.2%) and variable prevalences in N2 (1.8 and 5.6%, respectively). The prevalence of *B. burgdorferi* s.s. was estimated at 1.4 and 0.5%

Table 3 | Number of positive pools of ticks out of the 47 tested, for two sites in France, Denmark, and the Netherlands using the microfluidic tool (BioMark™ system).

	Number of positive pools (out of 47 tested)					
	France		Denmark		The Netherlands	
	Murbach F1	Wasselonne F2	Vestskoven D1	Grib Skov D2	Duin en Kruidberg N1	Austerlitz N2
<i>Borrelia</i> spp.	32	33	47	40	38	44
<i>B. burgdorferi</i> sensu stricto	0	1	31	29	14	6
<i>B. garinii</i>	5	8	19	36	20	17
<i>B. afzelii</i>	13	17	46	32	20	36
<i>B. valaisiana</i>	1	1	13	11	6	1
<i>B. spielmanii</i>	1	1	10	17	3	1
<i>B. miyamotoi</i>	22	10	13	2	20	27
<i>B. lusitaniae</i>	0	0	0	0	0	0
<i>B. bissettii</i>	0	0	0	0	0	0
<i>Anaplasma marginale</i>	0	0	0	0	0	0
<i>Anaplasma platys</i>	0	0	0	0	0	0
<i>Anaplasma ovis</i>	0	0	0	0	0	0
<i>Anaplasma centrale</i>	0	0	0	0	0	0
<i>Anaplasma phagocytophilum</i>	8	12	4	45	10	19
<i>Ehrlichia ruminantium</i>	0	0	0	0	0	0
<i>Ehrlichia canis</i>	0	0	0	0	0	0
<i>Ehrlichia chaffeensis</i>	0	0	0	0	0	0
<i>Candidatus N. mikurensis</i>	13	2	10	2	28	41
Spotted fever group	46	46	44	47	45	32
<i>Rickettsia conorii</i>	0	0	0	0	0	0
<i>Rickettsia slovaca</i>	0	0	0	0	0	0
<i>Rickettsia massiliae</i>	0	0	0	0	0	0
<i>Rickettsia helvetica</i>	46	46	44	46	45	32
<i>Bartonella henselae</i>	0	1	0	0	0	0
<i>Bartonella quintana</i>	0	0	0	0	0	0
<i>Francisella tularensis</i>	0	0	0	0	0	0
<i>Coxiella burnetii</i>	0	0	0	0	0	0
<i>Babesia divergens</i>	0	0	1	1	0	2
<i>Babesia caballi</i>	0	0	0	0	0	0
<i>Babesia canis</i>	0	0	0	0	0	0
<i>Babesia vogeli</i>	0	0	0	0	0	0
<i>Babesia venatorum</i> (sp. EU1)	2	3	14	5	0	9
<i>Babesia microti</i>	0	0	0	0	0	0
<i>Babesia bovis</i>	0	0	0	0	0	0
<i>Babesia bigemina</i>	0	0	0	0	0	0
<i>Babesia major</i>	0	0	0	0	0	0
<i>Babesia ovis</i>	0	0	0	0	0	0
<i>Theileria equi</i>	0	0	0	0	0	0
<i>Theileria annulata</i>	0	0	0	0	0	0

Bold values represent pathogens detected at least in one site.

in N1 and N2, respectively. *B. valaisiana* and *B. spielmanii* were identified in a single pool from the N2 site, but their prevalences were estimated at 0.5 and 0.3% in N1. In 2009, *B. lusitaniae* was described at one location (Sprong et al., 2012a), but was not encountered in the present study. The relapsing fever spirochete, *B. miyamotoi*, previously identified in the Netherlands in a human case of meningoencephalitis (Hovius et al., 2013), occurred in both Dutch sites and was most prevalent in N2 (3.4%). In N1, *B. miyamotoi* showed the same prevalence as *B. garinii* and

B. afzelii (2.2%). *Anaplasma phagocytophilum* and *Candidatus N. mikurensis* were found in both sites with variable prevalences, both more abundant in N2 (2 and 7.9%, respectively). The estimated prevalence of *R. helvetica* was highly variable depending on the sites (11.9% in N1 and 4.5% in N2). These three bacteria are well recognized in Dutch ticks and have previously been reported in the Netherlands (Nijhof et al., 2007; Sprong et al., 2009; Tjisse-Klasen et al., 2011). Two parasitic species were found in Dutch ticks but were only observed in N2, *B. divergens* (0.2%)

Table 4 | Estimated prevalence of pathogens detected in *Ixodes ricinus* in France, Denmark, and the Netherlands.

	Estimated prevalence % (95% CI)					
	France		Denmark		The Netherlands	
	Murbach F1	Wasselonne F2	Vestskoven D1	Grib Skov D2	Duin en Kruidberg N1	Austerlitz N2
<i>Borrelia</i> spp.	4.47 (2.97–6.41)	4.73 (3.15–6.77)	> 14.27 ^b	7.33 (4.92–10.52)	6.40 (4.31–9.12)	10.42 (6.73–15.85)
<i>B. burgdorferi</i> sensu stricto	<0.25 ^a	0.09 (0.00–0.48)	4.22 (2.79–6.08)	3.77 (2.46–5.47)	1.40 (0.76–2.36)	0.54 (0.20–1.18)
<i>B. garinii</i>	0.45 (0.14–1.05)	0.74 (0.32–1.46)	2.05 (1.22–3.21)	5.64 (3.79–8.04)	2.19 (1.32–3.39)	1.78 (1.02–2.85)
<i>B. afzelii</i>	1.29 (0.68–2.20)	1.78 (1.02–2.85)	14.27 (8.35–26.0)	4.47 (2.97–6.41)	2.19 (1.32–3.39)	5.64 (3.79–8.04)
<i>B. valaisiana</i>	0.09 (0.00–0.48)	0.09 (0.00–0.48)	1.29 (0.68–2.20)	1.06 (0.52–1.90)	0.54 (0.20–1.18)	0.09 (0.00–0.48)
<i>B. spielmanii</i>	0.09 (0.00–0.48)	0.09 (0.00–0.48)	0.95 (0.45–1.75)	1.78 (1.02–2.85)	0.26 (0.05–0.77)	0.09 (0.00–0.48)
<i>B. miyamotoi</i>	2.49 (1.54–3.79)	0.95 (0.45–1.75)	1.29 (0.68–2.20)	0.17 (0.02–0.63)	2.19 (1.32–3.39)	3.36 (2.17–4.93)
<i>Anaplasma phagocytophilum</i>	0.74 (0.32–1.46)	1.17 (0.60–2.05)	0.36 (0.10–0.91)	11.86 (7.42–18.97)	0.95 (0.45–1.75)	2.05 (1.22–3.21)
<i>Candidatus</i> N. mikurensis	1.29 (0.68–2.20)	0.17 (0.02–0.63)	0.95 (0.45–1.75)	0.17 (0.02–0.63)	3.56 (2.31–5.19)	7.90 (5.28–11.41)
Spotted fever group	14.27 (8.35–26.0)	14.27 (8.35–26.0)	10.42 (6.73–15.85)	> 14.27 ^b	11.86 (7.42–18.97)	4.47 (2.97–6.41)
<i>Rickettsia helvetica</i>	14.27 (8.35–26.0)	14.27 (8.35–26.0)	10.42 (6.73–15.85)	14.27 (8.35–26.0)	11.86 (7.42–18.97)	4.47 (2.97–6.41)
<i>Bartonella henselae</i>	<0.25 ^a	0.09 (0.00–0.48)	<0.25 ^a	<0.25 ^a	<0.25 ^a	<0.25 ^a
<i>Babesia divergens</i>	<0.25 ^a	<0.25 ^a	0.09 (0.00–0.48)	0.09 (0.00–0.48)	<0.25 ^a	0.17 (0.02–0.63)
<i>Babesia venatorum</i> (sp. EU1)	0.17 (0.02–0.63)	0.26 (0.05–0.77)	1.40 (0.76–2.36)	0.45 (0.14–1.05)	<0.25 ^a	0.85 (0.38–1.60)

^aAll pools negative; ^ball pools positive. Point estimates were based on the maximum likelihood method developed by Kline et al. (16). If all pools were positive, prevalence was recorded as > 14.3%, as the highest prevalence that can be distinguished from 100% when testing 47 pools of 25 ticks. If all pools were negative, prevalence was recorded as <0.25%, since the 95% probability of sampling n negative ticks from a population with prevalence p is given as $(1-p)^n$.

Table 5 | Homology between deposited sequences and reference sequences in GenBank.

Species	Nb of samples tested	Nb of samples obtained after sequencing	Deposited sequence	Length (bp)	Percentage of identity (%)	Reference sequence
<i>Borrelia garinii</i>	1	1	KF447529	822	99	AB555782
<i>Borrelia afzelii</i>	1	1	KF447528	824	99	JX971251
<i>Bartonella henselae</i>	1	1	KF679796	149	100	FJ832091
<i>Anaplasma phagocytophilum</i>	12	3	KF447526	824	100	EF067343
<i>Candidatus</i> N. mikurensis	12	8	KF447527	1012	100	EU810407
<i>Rickettsia helvetica</i>	12	9	KF447530	382	100	JX040636
<i>Babesia divergens</i>	3	2	KF447531	527	99	AY572456
<i>Babesia venatorum</i> (sp. EU1)	13	10	KF447532	562	100	JQ993425

and *B. venatorum* (0.8%) with prevalence rates similar to previous reports (0.07 and 0.4% for *B. divergens* and 0.9 and 1.2% for *B. venatorum*) (Nijhof et al., 2007; Wielinga et al., 2009).

DISCUSSION

In this study, we implemented a method using multiple primers/probe sets able to perform high-throughput detection of TBPs on an unprecedented scale. This large-scale investigation has (i) enabled the detection of rare pathogens such as *Bartonella henselae* and (ii) generated prevalence estimations for frequent, rare, or unexpected pathogens, thus creating a comprehensive overview of the epidemiological situation for 37 bacteria and parasites present in *I. ricinus*, in six European sites (two in France, Denmark, and the Netherlands).

Initial testing of the BioMark™ system showed that some pathogens could not be detected. Indeed, assessment was performed on positive DNA controls extracted from cultures, animal

blood, ticks, or plasmids, therefore DNA quality and concentration were highly variable between samples. An initial step of pre-amplification was therefore added to specifically amplify targeted pathogen sequences. Regarding the three non-specific assays, two hypotheses can be made: either lack of specificity or potential co-infection of the DNA samples. As positive controls were isolated from pure bacterial cultures, only non-specific cross-reaction explains the lack of specificity. The set of primers and probe designed against *B. burgdorferi* s.s. cross-reacted with *B. garinii* and *B. valaisiana*. However, this cross-reaction did not occur for every field sample. Cross-reactions were also observed between *R. conorii* and *R. slovaca*. There was a difference of approximately 10 cycles between the CP values for the expected *Rickettsia* species and the cross-reacting species. It will be interesting to test both sets of primers and probe on DNA extracted from ticks uniquely infected with each of the *Rickettsia*. However, this issue is not likely to arise with field samples, as *R. slovaca* is transmitted

by *Dermacentor marginatus* and *R. conorii* by *Rhipicephalus sanguineus*. In conclusion, the primers and probe sets for *B. burgdorferi* s.s., *R. conorii*, and *R. slovaca* need further optimization, so the current results obtained for these species should be interpreted with care. Several of the targeted pathogens cannot be cultured, or are rare and consequently unavailable from field samples, therefore plasmids containing target sequences were used as positive controls. For these pathogens and associated primers/probe sets, further evaluation of specificity is required. This tool was developed for epidemiologic rather than diagnostic purposes, therefore detection limits and sensitivity have not been experimentally determined. These experiments are somewhat difficult to implement and require a gold standard for each pathogen and consistent positive controls, which are not available for all TBPs.

Two sites per country were studied for the field investigation. The technique permitted the detection of 10 bacterial species; *B. burgdorferi* s.s., *B. garinii*, *B. afzelii*, *B. valaisiana*, *B. spielmanii*, *B. miyamotoi*, *A. phagocytophilum*, *Candidatus N. mikurensis*, *R. helvetica*, *B. henselae*, and two parasitic species; *B. divergens*, and *B. venatorum*, with variable prevalences according to the site of collection. Taken together, the estimated prevalences for all pathogens obtained on pools of 25 nymphs in this study are mostly consistent with European published data. For future studies, it will be fascinating to investigate smaller nymph pools to obtain more accurate estimations of TBP prevalences. The prevalence of *B. miyamotoi* is reported for the first time in Denmark at two sites and is quite similar between the three European countries in our study. *Borrelia miyamotoi* is transmitted by the same *Ixodes* species as the etiologic agents of European Lyme borreliosis, and has been detected in *Ixodes* ticks in Europe (Richter et al., 2003). Up until now no human cases have been reported in France or Denmark, but our data and the recent case of human infection described in the Netherlands (Hovius et al., 2013) suggest that surveillance needs to be improved. *Candidatus N. mikurensis* was detected in all three countries, with the highest prevalence in the Netherlands. Several human cases have been reported over the past decade in Europe (Maurer et al., 2013). However, clinical symptoms are not pathognomonic, suggesting the existence of unreported cases due to reduced awareness of symptoms by public health professionals (Jahfari et al., 2012). As this emerging human pathogen is widespread in Europe, it requires careful monitoring. *Rickettsia helvetica* was described as the most prevalent pathogen in all three countries. Even if its pathogenicity remains unclear, *R. helvetica* has been implicated in the development of fatal perimyocarditis (Sprong et al., 2009). Isolation of the bacterium from a patient is needed to definitely confirm *R. helvetica* as a human pathogen; however, *R. helvetica* already represents an excellent candidate for future emergence (Parola, 2004). Over the last few years, *I. ricinus* has been identified as a competent vector for *Bartonella henselae* (Cotte et al., 2008). Little data are available on its prevalence in ticks; and it has been estimated at between 11 and 40% in Europe (Dietrich et al., 2010). *Bartonella henselae* has never been reported in Danish ticks, but two variant types were detected in cats and mice (Engbaek and Lawson, 2004). Its presence in French ticks could be linked to the presence of wild cats in eastern France compared to the other countries. Babesiosis can be a variable but potentially severe disease, and is

best known as an animal affliction. However, increasing numbers of human cases have refocused epidemiological attention on this emerging zoonosis (Hildebrandt et al., 2013). Our study demonstrates that these hemoparasites are widely present in European ticks, and were observed for the first time in Danish ticks. *Babesia microti* was not encountered in this study but has previously been detected in the Netherlands at a prevalence ranging from 0.1 to 9% (Wielinga et al., 2009; Tjisse-Klasen et al., 2011).

Interestingly, among the targeted pathogens, 15 bacterial species and 10 parasitic species were not detected in any country, leading us to conclude that they are not present in *I. ricinus* from those European sites. Indeed, these TBPs are either very rare (Parola and Raoult, 2001; Sprong et al., 2012b) or have never been previously detected in the sampled regions, or are transmitted by other stage or other tick species (Parola and Raoult, 2001). *Francisella tularensis* and *Coxiella burnetii* are linked to important human and veterinary public health problems that require surveillance (Sprong et al., 2012b; Carvalho et al., 2014); however, the role of ticks in the transmission of these pathogens is nonetheless debated. Their apparent absence across the three European countries in *I. ricinus* ticks suggests that the risk of acquiring tularemia or Q fever from questing ticks could be negligible.

This new screening approach based on microfluidic systems allowing multiple parallel real-time PCRs, is a powerful tool for TBP surveillance in Europe. This study demonstrates the technique's capacity for large-scale studies utilizing the unique ability to simultaneously analyze large numbers of samples and multiple target pathogens. As demonstrated for babesiosis, vector surveillance could be very useful for monitoring disease emergence (Diuk-Wasser et al., 2014). Compared to an array with fixed panels of probes, this new tool presents the major advantage that it can be easily adapted to new situations, as it is entirely possible to add or remove primers/probe sets in order to modify the panel of targeted pathogens and tick species. Further studies will indeed confirm if this approach heralds the necessary breakthrough in epidemiological surveillance of vector-borne pathogens, broadening the monitoring of human and animal diseases.

In conclusion, our study clearly demonstrates the utility of a fast tool that allows comprehensive testing of high numbers of TBPs in ticks, and can be easily customized to fit regional demands or to screen tick or host samples for new or emerging diseases.

ACKNOWLEDGMENTS

This project was funded by CoVetLab grant (ANSES, SVA, CVI, DTU), ANSES grant and by Animal Health Department grant from INRA. This project was done under the framework of EurNegVec COST Action TD1303. We are grateful to Muriel Vayssier-Taussat and Sarah Bonnet for kindly reviewing this paper and their valuable comments. We also thank all the colleagues who provided DNA positive controls: Nathalie Boulanger and Benoît Jaulhac, National Reference Center for *Borrelia*, France; Lise Gern, University of Neuchâtel, Switzerland; Jose de la Fuente and Isabel Garcia Fernandez de Mera, IREC, Spain; Snorre Stuen, Norwegian School of Veterinary Science, Norway; Henri-Jean Boulouis, National Veterinary School of Alfort, France; Damien Meyer, CIRAD/INRA, France;

Michael L. Levin and Galina Zemtsova, CDC, USA; Lars Råberg, Lund University, Sweden; Pierre-Edouard Fournier and Didier Raoult, National Reference Center for Rickettsia, Aix-Marseilles University, France; Nora Madani, ANSES, France; Elodie Rousset, ANSES, France; Laurence Malandrin, ONIRIS, France; Jeune Equipe “Hémopathogènes vectorisés,” University of Lyon - VetAgro Sup, France; Emmanuel Cornillot, University of Montpellier, France; Huseyin Bilgin Bilgic, University of Adnan Menderes, Turkey; Dirk Dobbelaere and Isabel Hostettler, University of Bern, Switzerland; Anu Jaaskelainen, University of Helsinki, Finland.

REFERENCES

- Beytout, J., George, J. C., Malaval, J., Garnier, M., Beytout, M., Baranton, G., et al. (2007). Lyme borreliosis incidence in two French departments: correlation with infection of *Ixodes ricinus* ticks by *Borrelia burgdorferi* sensu lato. *Vector Borne Zoonotic Dis.* 7, 507–517. doi: 10.1089/vbz.2006.0633
- Bishop, R., Musoke, A., Morzaria, S., Gardner, M., and Nene, V. (2004). *Theileria*: intracellular protozoan parasites of wild and domestic ruminants transmitted by ixodid ticks. *Parasitology* 129(Suppl.), S271–S283. doi: 10.1017/S0031182003004748
- Bonnet, S., Jouglin, M., L’hostis, M., and Chauvin, A. (2007a). *Babesia* sp. EU1 from roe deer and transmission within *Ixodes ricinus*. *Emerg. Infect. Dis.* 13, 1208–1210. doi: 10.3201/eid1308.061560
- Bonnet, S., Jouglin, M., Malandrin, L., Becker, C., Agoulon, A., L’hostis, M., et al. (2007b). Transstadial and transovarial persistence of *Babesia divergens* DNA in *Ixodes ricinus* ticks fed on infected blood in a new skin-feeding technique. *Parasitology* 134, 197–207. doi: 10.1017/S0031182006001545
- Carvalho, C. L., Lopes De Carvalho, I., Ze-Ze, L., Nuncio, M. S., and Duarte, E. L. (2014). Tularemia: a challenging zoonosis. *Comp. Immunol. Microbiol. Infect. Dis.* 37, 85–96. doi: 10.1016/j.cimid.2014.01.002
- Colwell, D. D., Dantas-Torres, F., and Otranto, D. (2011). Vector-borne parasitic zoonoses: emerging scenarios and new perspectives. *Vet. Parasitol.* 182, 14–21. doi: 10.1016/j.vetpar.2011.07.012
- Cotte, V., Bonnet, S., Cote, M., and Vayssier-Taussat, M. (2010). Prevalence of five pathogenic agents in questing *Ixodes ricinus* ticks from western France. *Vector Borne Zoonotic Dis.* 10, 723–730. doi: 10.1089/vbz.2009.0066
- Cotte, V., Bonnet, S., Le Rhun, D., Le Naour, E., Chauvin, A., Boulouis, H. J., et al. (2008). Transmission of *Bartonella henselae* by *Ixodes ricinus*. *Emerg. Infect. Dis.* 14, 1074–1080. doi: 10.3201/eid1407.071110
- Cowling, D. W., Gardner, I. A., and Johnson, W. O. (1999). Comparison of methods for estimation of individual-level prevalence based on pooled samples. *Prev. Vet. Med.* 39, 211–225. doi: 10.1016/S0167-5877(98)00131-7
- Dantas-Torres, F., Chomel, B. B., and Otranto, D. (2012). Ticks and tick-borne diseases: a one health perspective. *Trends Parasitol.* 28, 437–446. doi: 10.1016/j.pt.2012.07.003
- De La Fuente, J., Estrada-Pena, A., Venzal, J. M., Kocan, K. M., and Sonenshine, D. E. (2008). Overview: ticks as vectors of pathogens that cause disease in humans and animals. *Front. Biosci.* 13, 6938–6946. doi: 10.2741/3200
- De La Fuente, J., Massung, R. F., Wong, S. J., Chu, F. K., Lutz, H., Meli, M., et al. (2005). Sequence analysis of the msp4 gene of *Anaplasma phagocytophilum* strains. *J. Clin. Microbiol.* 43, 1309–1317. doi: 10.1128/JCM.43.3.1309-1317.2005
- Dietrich, F., Schmidgen, T., Maggi, R. G., Richter, D., Matuschka, F. R., Vonthein, R., et al. (2010). Prevalence of *Bartonella henselae* and *Borrelia burgdorferi* sensu lato DNA in *Ixodes ricinus* ticks in Europe. *Appl. Environ. Microbiol.* 76, 1395–1398. doi: 10.1128/AEM.02788-09
- Diniz, P. P., Schulz, B. S., Hartmann, K., and Breitschwerdt, E. B. (2011). “*Candidatus* Neoehrlichia mikurensis” infection in a dog from Germany. *J. Clin. Microbiol.* 49, 2059–2062. doi: 10.1128/JCM.02327-10
- Diuk-Wasser, M. A., Liu, Y., Steeves, T. K., Folsom-O’keefe, C., Dardick, K. R., Lepore, T., et al. (2014). Monitoring human babesiosis emergence through vector surveillance New England, USA. *Emerg. Infect. Dis.* 20, 225–231. doi: 10.3201/eid201302.130644
- Engbaek, K., and Lawson, P. A. (2004). Identification of *Bartonella* species in rodents, shrews and cats in Denmark: detection of two *B. henselae* variants, one in cats and the other in the long-tailed field mouse. *APMIS* 112, 336–341. doi: 10.1111/j.1600-0463.2004.apm1120603.x
- Fertner, M. E., Mølbak, L., Boye Pihl, T. P., Fomsgaard, A., and Bødker, R. (2012). First detection of tick-borne “*Candidatus* Neoehrlichia mikurensis” in Denmark 2011. *Euro Surveill.* 17. Available online at: <http://www.eurosurveillance.org/ViewArticle.aspx?ArticleId=20096>
- Heyman, P., Cochez, C., Hofhuis, A., Van Der Giessen, J., Sprong, H., Porter, S. R., et al. (2010). A clear and present danger: tick-borne diseases in Europe. *Expert. Rev. Anti. Infect. Ther.* 8, 33–50. doi: 10.1586/eri.09.118
- Hildebrandt, A., Gray, J. S., and Hunfeld, K. P. (2013). Human babesiosis in Europe: what clinicians need to know. *Infection* 41, 1057–1072. doi: 10.1007/s15010-013-0526-8
- Hovius, J. W., De Wever, B., Sohne, M., Brouwer, M. C., Coumou, J., Wagemakers, A., et al. (2013). A case of meningoencephalitis by the relapsing fever spirochaete *Borrelia miyamotoi* in Europe. *Lancet* 382, 658. doi: 10.1016/S0140-6736(13)61644-X
- Jahfari, S., Fonville, M., Hengeveld, P., Reusken, C., Scholte, E. J., Takken, W., et al. (2012). Prevalence of *Neoehrlichia mikurensis* in ticks and rodents from North-west Europe. *Parasit. Vectors* 5:74. doi: 10.1186/1756-3305-5-74
- Jongejan, F., and Uilenberg, G. (2004). The global importance of ticks. *Parasitology* 129(Suppl.), S3–S14. doi: 10.1017/S0031182004005967
- Kantso, B., Svendsen, C. B., Jensen, P. M., Vennestrom, J., and Krogfelt, K. A. (2010). Seasonal and habitat variation in the prevalence of *Rickettsia helvetica* in *Ixodes ricinus* ticks from Denmark. *Ticks Tick Borne Dis.* 1, 101–103. doi: 10.1016/j.ttbdis.2010.01.004
- Kline, R. L., Brothers, T. A., Brookmeyer, R., Zeger, S., and Quinn, T. C. (1989). Evaluation of human immunodeficiency virus seroprevalence in population surveys using pooled sera. *J. Clin. Microbiol.* 27, 1449–1452.
- Liu, J., Hansen, C., and Quake, S. R. (2003). Solving the “world-to-chip” interface problem with a microfluidic matrix. *Anal. Chem.* 75, 4718–4723. doi: 10.1021/ac0346407
- Margos, G., Gatewood, A. G., Aanensen, D. M., Hanincova, K., Terekhova, D., Vollmer, S. A., et al. (2008). MLST of housekeeping genes captures geographic population structure and suggests a European origin of *Borrelia burgdorferi*. *Proc. Natl. Acad. Sci. U.S.A.* 105, 8730–8735. doi: 10.1073/pnas.0800323105
- Maurer, F. P., Keller, P. M., Beuret, C., Joha, C., Achermann, Y., Gubler, J., et al. (2013). Close geographic association of human neoehrlichiosis and tick populations carrying “*Candidatus* Neoehrlichia mikurensis” in eastern Switzerland. *J. Clin. Microbiol.* 51, 169–176. doi: 10.1128/JCM.01955-12
- Nielsen, E. M., and Andersen, M. T. (2003). Detection and characterization of verocytotoxin-producing *Escherichia coli* by automated 5’ nuclease PCR assay. *J. Clin. Microbiol.* 41, 2884–2893. doi: 10.1128/JCM.41.7.2884-2893.2003
- Nijhof, A. M., Bodaan, C., Postigo, M., Nieuwenhuijs, H., Opsteegh, M., Franssen, L., et al. (2007). Ticks and associated pathogens collected from domestic animals in the Netherlands. *Vector Borne Zoonotic Dis.* 7, 585–595. doi: 10.1089/vbz.2007.0130
- Parola, P. (2004). Tick-borne rickettsial diseases: emerging risks in Europe. *Comp. Immunol. Microbiol. Infect. Dis.* 27, 297–304. doi: 10.1016/j.cimid.2004.03.006
- Parola, P., and Raoult, D. (2001). Ticks and tickborne bacterial diseases in humans: an emerging infectious threat. *Clin. Infect. Dis.* 32, 897–928. doi: 10.1086/319347
- Pérez-Eid, C. (2007). *Les Tiques: Identification, Biologie, Importance Médicale et Vétérinaire*. Paris: Lavoisier.
- Rampersad, J. N., Watkins, J. D., Samlal, M. S., Deonanan, R., Ramsubeik, S., and Ammons, D. R. (2005). A nested-PCR with an Internal Amplification Control for the detection and differentiation of *Bartonella henselae* and *B. clarridgeiae*: an examination of cats in Trinidad. *BMC Infect. Dis.* 5:63. doi: 10.1186/1471-2334-5-63
- Regnery, R. L., Spruill, C. L., and Plikaytis, B. D. (1991). Genotypic identification of rickettsiae and estimation of intraspecific sequence divergence for portions of two rickettsial genes. *J. Bacteriol.* 173, 1576–1589.
- Reis, C., Cote, M., Paul, R. E., and Bonnet, S. (2011). Questing ticks in suburban forest are infected by at least six tick-borne pathogens. *Vector Borne Zoonotic Dis.* 11, 907–916. doi: 10.1089/vbz.2010.0103
- Richter, D., Schlee, D. B., and Matuschka, F. R. (2003). Relapsing fever-like spirochetes infecting European vector tick of Lyme disease agent. *Emerg. Infect. Dis.* 9, 697–701. doi: 10.3201/eid0906.020459
- Skarphedinnsson, S., Lyholm, B. F., Ljungberg, M., Sogaard, P., Kolmos, H. J., and Nielsen, L. P. (2007). Detection and identification of *Anaplasma*

- phagocytophilum*, *Borrelia burgdorferi*, and *Rickettsia helvetica* in Danish *Ixodes ricinus* ticks. *APMIS* 115, 225–230. doi: 10.1111/j.1600-0463.2007.apm_256.x
- Sprong, H., Hofhuis, A., Gassner, F., Takken, W., Jacobs, F., Van Vliet, A. J., et al. (2012a). Circumstantial evidence for an increase in the total number and activity of *Borrelia*-infected *Ixodes ricinus* in the Netherlands. *Parasit. Vectors* 5:294. doi: 10.1186/1756-3305-5-294
- Sprong, H., Tijssse-Klasen, E., Langelaar, M., De Bruin, A., Fonville, M., Gassner, F., et al. (2012b). Prevalence of *Coxiella burnetii* in ticks after a large outbreak of Q fever. *Zoonoses Public Health* 59, 69–75. doi: 10.1111/j.1863-2378.2011.01421.x
- Sprong, H., Wielinga, P. R., Fonville, M., Reusken, C., Brandenburg, A. H., Borgsteede, F., et al. (2009). *Ixodes ricinus* ticks are reservoir hosts for *Rickettsia helvetica* and potentially carry flea-borne *Rickettsia* species. *Parasit. Vectors* 2:41. doi: 10.1186/1756-3305-2-41
- Svendsen, C. B., Krogfelt, K. A., and Jensen, P. M. (2009). Detection of *Rickettsia* spp. in Danish ticks (Acari: *Ixodes ricinus*) using real-time PCR. *Scand. J. Inf. Dis.* 41, 70–72. doi: 10.1080/00365540802530653
- Tijssse-Klasen, E., Jacobs, J. J., Swart, A., Fonville, M., Reimerink, J. H., Brandenburg, A. H., et al. (2011). Small risk of developing symptomatic tick-borne diseases following a tick bite in The Netherlands. *Parasit. Vectors* 4:17. doi: 10.1186/1756-3305-4-17
- Vassallo, M., Pichon, B., Cabaret, J., Figureau, C., and Perez-Eid, C. (2000). Methodology for sampling questing nymphs of *Ixodes ricinus* (Acari: Ixodidae), the principal vector of Lyme disease in Europe. *J. Med. Entomol.* 37, 335–339. doi: 10.1603/0022-2585(2000)037[0335:MFSQNO]2.0.CO;2
- Vayssier-Taussat, M., Le Rhun, D., Buffet, J. P., Maaoui, N., Galan, M., Guivier, E., et al. (2012). *Candidatus Neoehrlichia mikurensis* in bank voles, France. *Emerg. Infect. Dis.* 18, 2063–2065. doi: 10.3201/eid1812.120846
- Vennestrom, J., Egholm, H., and Jensen, P. M. (2008). Occurrence of multiple infections with different *Borrelia burgdorferi* genospecies in Danish *Ixodes ricinus* nymphs. *Parasitol. Int.* 57, 32–37. doi: 10.1016/j.parint.2007.07.004
- Wielinga, P. R., Fonville, M., Sprong, H., Gaasenbeek, C., Borgsteede, F., and Van Der Giessen, J. W. (2009). Persistent detection of *Babesia* EU1 and *Babesia microti* in *Ixodes ricinus* in the Netherlands during a 5-year surveillance: 2003–2007. *Vector Borne Zoonotic Dis.* 9, 119–122. doi: 10.1089/vbz.2008.0047

Conflict of Interest Statement: The authors declare that the research was conducted in the absence of any commercial or financial relationships that could be construed as a potential conflict of interest.

Received: 09 May 2014; accepted: 10 July 2014; published online: 29 July 2014.

Citation: Michelet L, Delannoy S, Devillers E, Umhang G, Aspan A, Juremalm M, Chirico J, van der Wal FJ, Sprong H, Boye Pihl TP, Klitgaard K, Bødker R, Fach P and Moutailler S (2014) High-throughput screening of tick-borne pathogens in Europe. *Front. Cell. Infect. Microbiol.* 4:103. doi: 10.3389/fcimb.2014.00103

This article was submitted to the journal *Frontiers in Cellular and Infection Microbiology*.

Copyright © 2014 Michelet, Delannoy, Devillers, Umhang, Aspan, Juremalm, Chirico, van der Wal, Sprong, Boye Pihl, Klitgaard, Bødker, Fach and Moutailler. This is an open-access article distributed under the terms of the Creative Commons Attribution License (CC BY). The use, distribution or reproduction in other forums is permitted, provided the original author(s) or licensor are credited and that the original publication in this journal is cited, in accordance with accepted academic practice. No use, distribution or reproduction is permitted which does not comply with these terms.