



OPEN ACCESS

EDITED BY

Yanrong Zheng,
Zhejiang Chinese Medical University,
China

REVIEWED BY

Mingsan Miao,
Henan University of Traditional Chinese
Medicine, China
Yanying Fan,
Shanxi Medical University, China

*CORRESPONDENCE

Elizabeth A. H. Hall,
eah@cam.ac.uk

SPECIALTY SECTION

This article was submitted to Cell Death
and Survival,
a section of the journal
Frontiers in Cell and Developmental
Biology

RECEIVED 18 July 2022

ACCEPTED 05 September 2022

PUBLISHED 28 September 2022

CITATION

Wong JJ, Varga BV, Káradóttir RT and
Hall EAH (2022), Electrochemically
induced *in vitro* focal hypoxia in
human neurons.
Front. Cell Dev. Biol. 10:968341.
doi: 10.3389/fcell.2022.968341

COPYRIGHT

© 2022 Wong, Varga, Káradóttir and
Hall. This is an open-access article
distributed under the terms of the
[Creative Commons Attribution License
\(CC BY\)](https://creativecommons.org/licenses/by/4.0/). The use, distribution or
reproduction in other forums is
permitted, provided the original
author(s) and the copyright owner(s) are
credited and that the original
publication in this journal is cited, in
accordance with accepted academic
practice. No use, distribution or
reproduction is permitted which does
not comply with these terms.

Electrochemically induced *in vitro* focal hypoxia in human neurons

Joseph J. Y. Wong¹, Balazs V. Varga²,
Ragnhildur Thóra Káradóttir² and Elizabeth A. H. Hall^{1*}

¹Department of Chemical Engineering and Biotechnology, University of Cambridge, Cambridge, United Kingdom, ²Wellcome—MRC Cambridge Stem Cell Institute, Cambridge, United Kingdom

Focalised hypoxia is widely prevalent in diseases such as stroke, cardiac arrest, and dementia. While in some cases hypoxia improves cellular functions, it mostly induces or exacerbates pathological changes. The lack of methodologies that can simulate focal acute hypoxia, in either animal or cell culture, impedes our understanding of the cellular consequences of hypoxia. To address this gap, an electrochemical localised oxygen scavenging system (eLOS), is reported, providing an innovative platform for spatiotemporal *in vitro* hypoxia modulation. The electrochemical system is modelled showing O₂ flux patterns and localised O₂ scavenging and hypoxia regions, as a function of distance from the electrode and surrounding flux barriers, allowing an effective focal hypoxia tool to be designed for *in vitro* cell culture study. O₂ concentration is reduced in an electrochemically defined targeted area from normoxia to hypoxia in about 6 min depending on the O₂-flux boundaries. As a result, a cell culture-well was designed, where localised O₂ scavenging could be induced. The impact of localised hypoxia was demonstrated on human neural progenitor cells (hNPCs) and it was shown that miniature focal hypoxic insults can be induced, that evoke time-dependent HIF-1 α transcription factor accumulation. This transcription is “patterned” across the culture according to the electrochemically induced spatiotemporal hypoxia gradient. A basic lacunar infarct model was also developed through the application of eLOS in a purpose designed microfluidic device. Miniature focal hypoxic insults were induced in cellular processes of fully oxygenated cell bodies, such as the axons of human cortical neurons. The results demonstrate experimentally that localised axonal hypoxic stress can lead to significant increase of neuronal death, despite the neurons remaining at normoxia. This suggests that focal hypoxic insult to axons alone is sufficient to impact surrounding neurons and may provide an *in vitro* model to study the impact of microinfarcts occurring in the deep cerebral white matter, as well as providing a promising tool for wider understanding of acute hypoxic insults with potential to uncover its pathophysiology in multiple diseases.

KEYWORDS

hypoxia, electrochemistry, microfluidic, human cortical neural progenitor, cortical neuron, axon, small vessel disease, lacunar infarct

Introduction

Cerebral small vessel diseases, such as white matter lesions and lacunar infarcts, are associated with increased risk of developing cognitive impairment and motor disturbances in neurodegenerative diseases (Prins and Scheltens, 2015; Alber et al., 2019; Ye et al., 2019; Liu et al., 2020; Snyder et al., 2021) and occur in the deep cerebral white matter (Smith et al., 2012; Martinez Sosa and Smith, 2017). Despite a clear relationship between cognitive decline and these small scale infarcts (2–20 mm in diameter) our understanding of the underlying mechanisms and clinical outcome of these asymptomatic “silent” infarcts is still lacking.

Oxygen homeostasis is crucial for cell function and depends on the control of blood circulation and cell metabolism. The effect of deprivation of oxygen in cells and activation of several signaling pathways is highly dependent on the duration and severity of hypoxia (Ferdinand and Roffe, 2016). While the detrimental effects of chronic hypoxia (long term hypoxic exposure) may be recoverable, acute hypoxia is significantly more harmful and induces necrosis, apoptosis, reactive oxidative species generation and inflammation (Saikumar and Venkatachalam, 2003; Sharp and Bernaudin, 2004; Imtiyaz et al., 2010; Hernansanz-Agustín et al., 2014).

In the human brain, the partial pressure of oxygen is about 35 mmHg (4.6%) decreasing with brain depth (Carreau et al., 2011). Permanent brain tissue damage can occur within minutes following a hypoxic event, followed by secondary damage to the surround tissue (penumbra). Cells and tissues activate adaptive responses that are primarily regulated by the constitutive cellular expression of Hypoxia Inducible Factor 1 alpha (HIF-1 α) (Semenza, 2001). Hypoxia causes increased HIF-1 α levels that activates cellular functions for both survival and cell death. In addition to the primary damage caused by cellular responses amid ischaemia, reperfusion accelerates the deleterious effect, commonly known as the secondary damage or the oxygen paradox (Daniele et al., 2021). Despite the consequences of focal acute hypoxia in small vessel diseases, knowledge of the temporal cellular mechanisms involved is still incomplete (Daniele et al., 2021). This is obstructed by the absence of appropriate experimental models to study the impact of acute focal hypoxia *in vitro*.

In vitro methods often utilise diffusional gas exchange (e.g., low oxygen incubators and hypoxia chambers), enzymatic oxygen scavengers (e.g., glucose oxidase with catalase (Li et al., 2016)) and HIF-1 α degradation inhibiting chemicals (e.g., CoCl₂ and DMOG (Anderson et al., 1994; Cummins et al., 2008)) which create homogeneous oxygen concentration across the entire culture (cf. 2–20 mm localised hypoxia in lacunar infarcts) but show slow (hours) diffusion and equilibration of oxygen (Allen et al., 2001). Chemically induced hypoxia targeting the HIF-1 α pathway, only mimics

the effect on the HIF-1 α degradation mechanism, but not other O₂-related pathways.

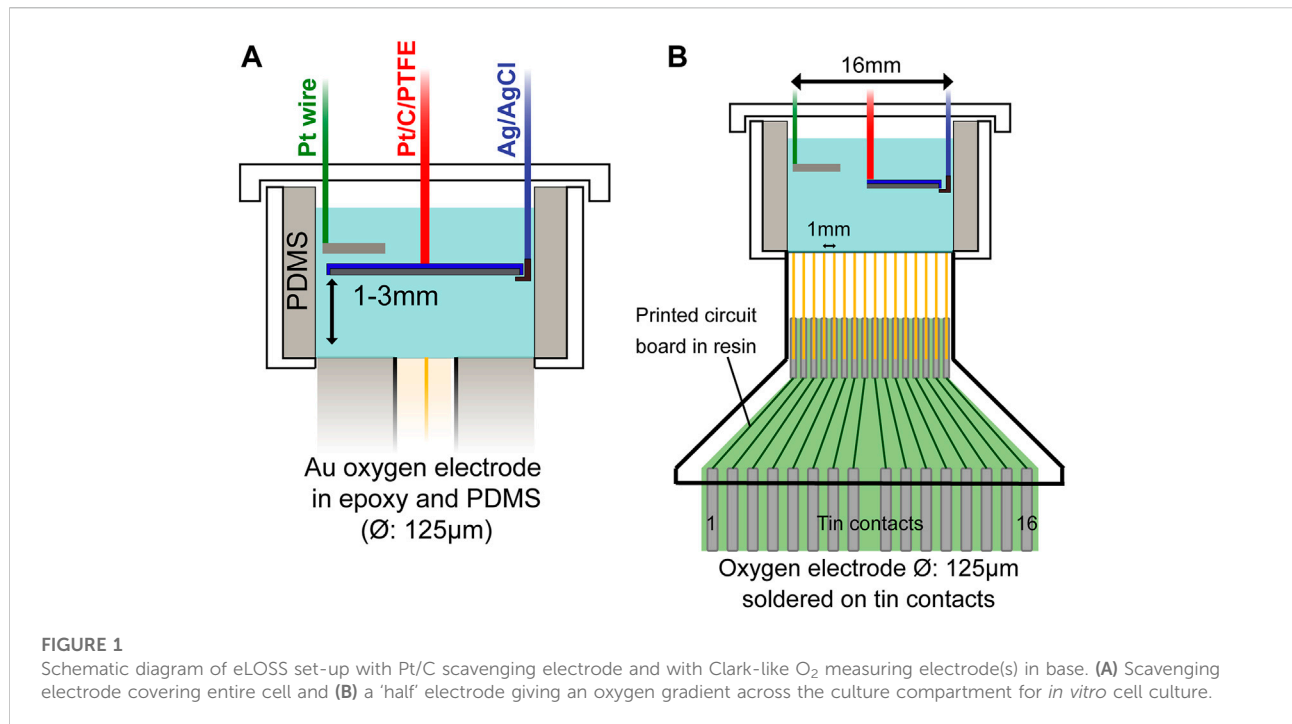
Pre-treated solution exchange with microfluidic devices (Piret et al., 2002; Thomas et al., 2011; Wang et al., 2014) reduces time for oxygen equilibration and avoids oxygen removing enzymes and chemicals causing unrelated side-effects in cells. However, these devices still limit differential spatial focal control of oxygen levels that would simulate the brain structure and the infarct (Brennan et al., 2014; Ando et al., 2017; Rexius-Hall et al., 2017). Some also require pumps for a constant flow of medium which affects the cell viability due to induction of shear stress (Wang C. J. et al., 2008; Herzog et al., 2021). A robust, rapid and focally targeted hypoxia platform, is required to study *in vitro* cellular mechanisms underlying focally induced hypoxia and to impact future therapeutic strategies.

In this work we investigate the principle of electrochemical Localised Oxygen Scavenging (eLOS) to apply focal acute hypoxia in the study of *in vitro* cell models. To achieve this goal, we investigate the oxygen gradient next to an electrode polarized at the oxygen reduction potential, and propose a design to induce the spatiotemporal hypoxia via electrochemical oxygen scavenging. The eLOS system is demonstrated in human neural progenitor cells (hNPCs), to show the spatiotemporal gradient of hypoxic response. The platform is further developed in a microchannel device to study a human cortical lacunar infarct model with pluripotent stem cell (PSC)-derived human cortical neurons.

Materials and methods

Materials and equipment

All chemicals were analytical grade. Different batches of reagents were prepared and compared throughout the study; no batch effects were observed. Phosphate buffer saline (PBS), potassium phosphate dibasic, potassium phosphate monobasic, potassium chloride, water for cell culture, borate buffer (pH 8.5), glycine, triton x 100, Mowiol solution, bisBenzimide H 33258, hydrogen peroxide, horseradish peroxidase (HRP) and dimethylxalylglycine (DMOG) were supplied by Sigma Aldrich. DMEM/F-12 with GlutaMAX (with or without phenol red), neurobasal medium (with or without phenol red), GlutaMAX, sodium bicarbonate, beta-mercaptoethanol, N2 supplement (100x), B27 supplement (50x), B27 supplement without vitamin A (50x), insulin (human recombinant, zinc solution) and bovine serum albumin fraction V (7.5%) were obtained from Gibco. Animal-free blocking solution, and cleaved-caspase-3 (Asp175) antibody #9661 were obtained from Cell Signal Technology. 6F inhibitors were purchased from Selleckchem as listed in Varga et al., 2022. Poly-d-lysine 1 mg/ml in water was obtained from



Millipore. Accutase and MitoSpy Green FM were obtained from BioLegend. Laminin used was obtained from Cultrex. German glass coverslips (Ø:12 mm) were purchased from Bellco Glass Inc. Alexa Fluor 555-conjugated goat anti-rabbit polyclonal antibody, Amplex UltraRed were obtained from Thermo Fisher Scientific. Rabbit anti-HIF-1 α monoclonal IgG antibody (1:200) (#ab51608) and Phalloidin-iFlour 488 Reagent—CytoPainter (Abcam #ab176753) are from Abcam. Chicken anti-TUBB3 (#NB100-1612) is from Novus Biological.

Electrochemical potential control and electrochemical data were obtained with a μ Stat 400 Bipotentiostat/Galvanostat from DropSens operating in the potentiostat mode. Scanning electron microscopy (SEM) was obtained on a SFEI Nova NanoSEM. Confocal microscopy used the TCS SP5 Leica Confocal Microscope. Microfabrication used the POLOS spin coater, 2.6-L Zepto Low Cost Plasma Laboratory Unit by Diener Plasma-Surface Technology, dataphysics OCA, DektaXT and the Karl Sus Contact Mask Aligner MJB-4. A Formlabs 3D printer was used for prototyping.

Preparation of electrodes

The oxygen scavenging electrode was 5% platinum/graphite (Pt/C) kindly fabricated and provided by Alphasense, The Sensor Technology Company, Great Notley, Essex. Platinum was dispersed into ground-graphite with surfactant and mixed with PTFE, dried, then heated to remove water and surfactant and sintered near the melting point of PTFE in a proprietary

fabrication process, then pressed into a Gore membrane (Ø: 14 mm). A copper wire was connected to the centre of the electrode. Details and images are given in [Supplementary Section S1](#).

Preparation of the Clark-type oxygen electrode and oxygen electrode array

A Clark-type electrode and electrode array were used to measure oxygen concentration at the base of the electrochemical cell during oxygen scavenging ([Figure 1](#)). The single electrode (99.99+% purity gold wire Ø: 125µm, Goodfellow) was encased in epoxy resin of 4 mm diameter. The gold electrode 16 \times 1 array, was arranged with each electrode positioned 1.0 mm apart across the 16 mm base of the cell-culturing compartment, for spatial mapping of the oxygen gradient. The array was formed by four 3D printed blocks (UV-curing clear resin), using a Formlabs 3D printer, that together encased the gold electrodes which were soldered on a custom printed circuit board (PCB). The construction detail is given in [Supplementary Section S2](#). Characterisation of the electrode is presented in [Supplementary Figure S1](#).

Cell lines and culture

Human embryonic pluripotent stem cell-derived cortical neuroepithelial stem cells (cNESCs) were cultured and expanded from the stock (Sheffield 6, PMID: 28594288) ([Varga et al., 2022](#)). 1.

5 ml of laminin (1.5 $\mu\text{g}/\text{cm}^2$) and fibronectin (1 $\mu\text{g}/\text{cm}^2$) containing PBS solution was added to the 6-well plates overnight before cNESCs were plated with a concentration of 50,000–100,000 cells/ cm^2 . The cells were cultured in the 6F culture medium, composition detailed in (Varga et al., 2022).

Glass coverslips (\varnothing : 12 mm) were placed in 24-well plates and were cleaned in a nitrogen plasma cleaner for 10 min. The coverslips were coated with poly-D-lysine (3 $\mu\text{g}/\text{cm}^2$) dissolved in borate buffer pH 8.5 for 1 h at 37°C, followed by laminin (1.5 $\mu\text{g}/\text{cm}^2$) in PBS overnight at 37°C before cell attachment. Cells of 100,000/ cm^2 were plated on the coverslips and cultured in an incubator with 5% O_2 /7% CO_2 / N_2 balance at 37°C. On the day before the hypoxic stress treatment, the culture medium was changed into FGF2 (10 ng/ml) included Neuron Differentiation Culture Medium (N2B27), which contains 1:1 ratio of DMEM-F12: Neurobasal medium, Glutamax (2 mM), Beta-mercaptoethanol (0.1 mM), N2 supplement (0.5x), B27 supplement (0.5x) and Insulin (10 $\mu\text{g}/\text{ml}$). This allows the cells to differentiate into hNPCs.

Microchannel device fabrication

The microchannel device was a two-layer structure on a silica wafer (\varnothing : 4"). The design and dimensions are given in [Supplementary Figure S2](#). In brief, the silica wafer was cleaned with acetone and isopropanol, and dried with compressed gas before evaporating the solvents at 140°C. SU-8 2005 negative photoresist were spin-coated onto the clean silica wafer: 5 s at 500 rpm at 100 rpm/s acceleration, followed by 30 s at 3000 rpm at 300 rpm/s acceleration. The wafer was prebaked at 65°C (1 min) and 95 °C (2 min), followed by UV exposure (2 \times 4s) and post-exposure baking at 65°C (1 min) and 95°C (3 min). Features were developed for 2 min in PGMEA before cleaning with isopropanol and hard baking at 150°C (15 min). The second layer followed a similar procedure. SU-8 2025 was deposited at a maximum spin-coating speed of 1700rpm. UV exposure was 2 doses of 10s. Baking times at 65°C and 95°C lasted for 3 min and 9 min, respectively, whilst hard baking at 150 °C required 45 min. The wafer was characterized with a vertical profiler ([Supplementary Figure S2C,D](#)). A 3D-printed block was used to exclude PDMS (Sylgard 184) from the central compartment. After removal, a biopsy punch (\varnothing : 8 mm) and a scalpel were used to create the wells and trim the devices, which were bonded on glass slides (22 \times 60 mm, Thermal Scientific Menzel #1.5) after activating by oxygen plasma for 40s (see [section 3.7](#)).

Oxygen scavenging characterization in the eLOS

All experiments were conducted in bulk 0.1M KCl solution buffered with 40 mM phosphate buffer pH7.3 \pm 0.1 (PBKCl)

unless otherwise stated. Cyclic voltammetry, linear sweep voltammetry and chronoamperometry were used to study oxygen reduction and its adsorption on the electrode surface. The Anson equation was used to obtain charge due to oxygen reduction (Q_{diff}) (Islam and Kant, 2011):

$$Q_{\text{diff}} = 2nFACD^{\frac{1}{2}}\pi^{-\frac{1}{2}}t^{\frac{1}{2}} \quad (1)$$

where n is the number of electrons in the redox reaction, F is Faraday's constant, A is the electrode area, C is concentration, D is diffusion coefficient and t is time.

A plot of Q vs. $t^{1/2}$ was used to interpret the total charge, which includes Q_{diff} , double layer charging, gas trapped in void electrode space, and adsorption (Q_{ads}). Q_{ads} can be resolved from the projected intercept of the plot. Surface concentration of adsorbed species (Γ_0) is calculated from Q_{ads} based on the following equation

$$Q_{\text{ads}} = nF\Gamma_0 \quad (2)$$

In bulk oxygen-depleted experiments electrolyte was bubbled with nitrogen for 30 min before measurement began and then an over-pressure of N_2 maintained above the electrolyte during measurements. BET analysis was conducted to study the electrode surface area and porosity.

A PDMS cell culturing well (\varnothing : 16 mm) was designed to accommodate the electrode system ([Figure 1A](#)). The details of construction are given in [Supplementary Section S3](#). The scavenging electrode was placed at \sim 1.0mm and \sim 1.5 mm distance from the bottom of the well. The oxygen measuring electrode was fixed at the PDMS base, polarized at -0.5 V for 3 min to stabilize the current before switching on oxygen scavenger for 30 min. The O_2 measuring electrode was positioned at the centre (0 mm) and well edge (6 mm radial distance from the centre), for investigating the uniformity of oxygen concentration across the base. Alternatively, the electrode array was embedded in the base of the well ([Figure 1B](#)) to enable oxygen concentration to be mapped with greater resolution across the diameter cross-section. Measurements were performed in air, N_2 and in 5% O_2 concentration with a 5% O_2 / N_2 balance premixed gas cylinder.

Electrochemical simulation

A finite difference model (MATLAB 2021a) was used to simulate the change of oxygen concentration under the oxygen scavenging system and verify the measurements taken by the oxygen electrode. The Nernst-Planck equation was solved to predict and map the oxygen concentration change from ambient 5% or 20.9% O_2 partial pressure, under the influence of a diffusion-controlled oxygen scavenging electrode system. This gives:

TABLE 1 Parameters used for simulation.

Parameter	Physical interpretation	Value	Units	Reference
X	Total length in horizontal direction	10	Mm	-
dx	X steps	0.067	Mm	-
Y	Total length in vertical direction	5 (no flux base)/8 (PDMS base)	mm	-
dy	Y steps	0.033 (no flux base)/0.053 (PDMS base)	mm	-
T	Total time	1800	sec	-
dt	Time step	0.075	sec	-
[O ₂] _{ambient}	Oxygen partial pressure in percentage in ambient	5/20.9	%	-
D _{solution}	Diffusion coefficient of oxygen in solution	2.0 × 10 ⁻⁵	cm ² s ⁻¹	-
D _{PDMS}	Diffusion coefficient of oxygen in PDMS	4.0 × 10 ⁻⁵	cm ² s ⁻¹	-
D _{epoxy}	Diffusion coefficient of oxygen in epoxy	4.9 × 10 ⁻⁷	cm ² s ⁻¹	Chowdhury et al. (2016)
D _{polystyrene}	Diffusion coefficient of oxygen in polystyrene	1.7 × 10 ⁻⁷	cm ² s ⁻¹	Ghosal and Freeman (1994)
X _{pdms}	Thickness of the PDMS wall in x direction	2	mm	-
Y _{pdms}	Thickness of the PDMS base	3	mm	-
X _{elec}	length of the electrode	7 (half)/14 (full)	mm	-
Y _{E_pos}	Position of the scavenging electrode from the base	1–3	mm	-

Boundary	Boundary conditions
Centre of well	Symmetric boundary condition
Air-solution interface	Dirichlet boundary condition (Fixed concentration boundary, [O ₂] = [O ₂] _{ambient})
Glass, polystyrene, epoxy interface	Neumann boundary condition (No flux boundary)
Electrode polarized to reduce oxygen	Dirichlet boundary condition (Fixed concentration boundary, [O ₂] = 0)

$$\frac{\partial C}{\partial t} = -D\nabla C - \frac{zF}{RT}DC\nabla\phi + C_v \quad (3)$$

where z is the number of electrons involved in the reduction of oxygen, ϕ is the electrode potential, R is the universal gas constant, T is the temperature and v is the velocity of the fluid and ∇ is the gradient. C , D and t are defined as above.

Based on the absence of convection, high background electrolyte content and uncharged oxygen molecules, the equation is simplified to a diffusion problem. As the system dimensions are significantly larger than the steps and by symmetry, the problem can be assumed and discretized as a 2D Cartesian grid, giving:

$$\frac{\partial C}{\partial t} = D \left[\frac{\partial^2 C}{\partial x^2} + \frac{\partial^2 C}{\partial y^2} \right] \quad (4)$$

where x and y are horizontal and vertical in the Cartesian grid respectively. Implementing the finite difference method, this simplifies the equation to:

$$\frac{C_{(i,j,k+1)} - C_{(i,j,k)}}{dt} = D \left[\frac{C_{(i+1,j,k)} + C_{(i-1,j,k)} - 2C_{(i,j,k)}}{dx^2} + \frac{C_{(i,j+1,k)} + C_{(i,j-1,k)} - 2C_{(i,j,k)}}{dy^2} \right] \quad (5)$$

where i , j and k are indexes for x , y and t , respectively.

The model simulates the PDMS well-based system described above. Both a full circular electrode and a half circle electrode were considered at heights at 1–3 mm from the base. The base is modelled with different materials, having a mix of O₂ diffusion properties including a PDMS, glass, epoxy or polystyrene. Glass, epoxy and polystyrene boundaries are assumed to be no flux boundaries due to the low diffusion coefficient of oxygen in these materials. The input values for the model are given in Table 1.

pH and H₂O₂ generation

Changes in pH and H₂O₂ concentration were measured after polarizing the electrode at the oxygen reduction potential for 0 min, 30 min and 3 h. The measurements were conducted in PBKCl and neural maintenance medium, with or without catalase (≥12.5U/mL). H₂O₂ concentration was measured with Amplex UltraRed assay as described in Supplementary Section S3 and Supplementary Figure S3, S4. pH was measured with a Jenway 3510 pH meter.

The effect of H₂O₂ at different concentrations was also studied on hNPCs cultures. Cells were cultured in their basic

culture medium with H₂O₂ supplemented, with or without 1.25 µg/ml of catalase. H₂O₂ at final concentrations of 1 µM, 10 µM, and 100 µM were added to the culture medium immediately before adding to cells. Staurosporine (SRP) 100nM, a broad-spectrum protein kinase inhibitor was added to the media as the positive control. Cells were all cultured for 4 h in 5% O₂.

Hypoxia induction by eLOS and characterization

The PDMS well-container was cleaned in a nitrogen plasma cleaner (10 min) before adding an hNPCs-attached glass coverslip to the base of the container (creating a no-O₂ flux boundary) and placing in a CO₂ incubator. FGF2 added N2B27(-), N2B27 without phenol red, was used over the hypoxic treatment. The scavenging electrode was positioned at ~1.5 mm away from the cells and polarized at -0.7 V for electrochemical induction of hypoxic stress for 1 h, 3 h, and 6 h. The hypoxia positive control was cultured in the presence of the drug DMOG (250 µM) for 6 h. Other culturing conditions were the same as above. Acute hypoxia was conducted at time intervals of 20 mins, 40 mins and 60 min.

To spatially localise the hypoxia, the scavenging-electrode was shaped by cutting. Circular and half circular electrodes were compared placed above the cells (Figure 1B). The electrode was polarized at -0.7 V and the outcome followed for 3 h. The focusing of the electrochemical removal of oxygen on one half of the culture dish, using the half-circle electrode was compared with the full-circle. Hypoxic responses were analysed based on the cells' respective spatial positions. Fixed cells were imaged as tiles along the horizontal axis. Mean HIF-1α intensity within the cell nucleus was used for analysis.

Focal acute hypoxia in the microchannel device by eLOS

Clean microchannel devices were coated with PDL and laminin according to the procedure described above. After 14 days in the N2B27, immature neurons were detached by 15 min of Accutase incubation and centrifuged at 400x g for 3 min 100,000 resuspended cells, typically in 10µL, were seeded next to the channels in the side chambers, protected by a 90 mm petri-dish and humidified with sterile water in a 35 mm petri-dish. Higher solution height was maintained in the central chamber in the first week to keep a gentle outflow, deterring neurons from migrating through the barrier channels. After 3 weeks of culturing in N2B27, neurons extended axons across the barrier channels and formed networks in the central chamber.

The cultures were then subjected to hypoxic stress in N2B27(-). The Pt/C O₂-scavenging electrode (6 mm × 7 mm) was placed in the central chamber at 2 mm height. In acute hypoxia experiments, oxygen was scavenged for 25 and 35 min, corresponding to 15 and 25 min at focal hypoxia in the central chamber, respectively. For bulk hypoxia cells were incubated in 0.2% O₂/5% CO₂ in N₂ for 6 h (3 h equilibration + 3 h bulk hypoxia).

An immediate N2B27 media change was done at the end of the hypoxia time period with 18 h post hypoxia incubation in 5% O₂ according to the normal levels of O₂ in cells. The negative control was kept in 5% O₂ throughout. All samples were fixed after the experiment and were imaged by confocal microscopy following the procedures in [Supplementary Section S4](#).

Immunofluorescent staining

Cells were fixed with 4% paraformaldehyde (PFA) for 10 min and rinsed twice with PBS. Fixed samples were first blocked with Animal Free Blocker and Diluent (AFB) containing 0.3 M glycine and TritonX0.1 for 1 h in room temperature.

The primary antibody for the hypoxia induction study targeted HIF-1α. It used recombinant rabbit anti-HIF-1α monoclonal IgG antibody, ab51608 from Abcam with dissociation constant, $K_D = 2.24 \times 10^{-10}$ M. 5 µg/ml rabbit anti-HIF-1α monoclonal IgG antibody (1:200) (Abcam #ab51608) (Storti et al., 2014) was diluted in AFB. Primary antibody staining lasted for 2 h at room temperature. Slides were then rinsed three times in PBS with TritonX0.1 for 5 min each. They were incubated in AFB containing 2 µg/ml Alexa Fluor 555-conjugated goat anti-rabbit polyclonal antibody for 1 h at room temperature in the dark. Slides were rinsed 3 times in PBS with TritonX0.1.

All slides were stained with bisBenzimide H33258 for 1 min before mounting and then dried in the dark overnight. Z-stacks were taken at ×20 magnification with the confocal microscope (Leica Microsystems, TCS SP5 Microscope).

Neurons in microchannel devices were stained with TUBB3 and bisBenzimide H33258. Primary antibody staining used chicken anti-TUBB3 (#NB100-1612) (1:1000) in AFB for 16 h at 4 °C, followed by secondary antibody anti-chicken 488 (1:500) for 2 h.

The apoptotic response study had most of its steps similar to the hypoxia induction study. 1 µg/ml rabbit polyclonal anti-caspase-3, active (cleaved) form primary antibody (1:200) (Merck #AB3623) was used as the primary antibody and secondary antibody used was same as above. Actin filament staining was performed after the washes of the secondary antibody staining. Phalloidin-iFlour 488 Reagent—CytoPainter (Abcam #ab176753) stock (50x) in PBS +1% BSA were prepared in advance and stored in the fridge until use. It was diluted to 1x working solution shortly prior to use and added to the coverslips.

TABLE 2 Experimental design.

Experimental design	Experiment	Conditions/parallel experiments	Replicates
Characterisation of Pt/C	<i>Oxygen adsorption</i>	In ambient	3
	<i>Oxygen adsorption</i>	In nitrogen	3
	<i>BET</i>	In nitrogen	3
	<i>Tafel plot</i>	In nitrogen	3
	<i>Oxygen concentration change</i>	In nitrogen	3
eLOS hypoxia	<i>Hypoxic response</i>	Negative control	3
	<i>Hypoxic response</i>	Time conditions	3 each
6 images randomly taken with minimum 100 cells each; minimum 1,000 cells per replicate	<i>Hypoxic response</i>	Positive control (DMOG 250 μ M)	3
	<i>Acute hypoxia</i>	Negative control	3
	<i>Acute hypoxia</i>	Time conditions	3
	<i>Focal hypoxia</i>	Negative control	3
	<i>Focal hypoxia</i>	Position conditions	3
	<i>Focal hypoxia</i>	Positive control	3
Apoptosis study	<i>pH change</i>	Different solutions	3 each
	<i>H₂O₂ generation</i>	Different solutions	3 each
	<i>hNPC apoptosis</i>	Negative control	3
	<i>hNPC apoptosis</i>	H ₂ O ₂ concentrations	3 each
	<i>hNPC apoptosis</i>	Positive control (Staurosporine 100 nM)	3
Neuron focal hypoxia	<i>Hypoxia at microchannel device</i>	Positional conditions	3
	<i>Cortical neuron model</i>	Negative control	4
	<i>Cortical neuron model</i>	Focal hypoxia conditions	4 each
	<i>Cortical neuron model</i>	Bulk hypoxia	4

Samples were incubated for 20 min in room temperature, followed by 3 times rinsing with PBS with TritonX0.1 before nucleus staining.

Data analysis

All experiments were conducted with positive and negative controls in parallel (Table 2). All experiments had 3 independent replicates ($n = 3$) unless stated otherwise. A minimum of six images were taken randomly per experiment per replica. Each immunofluorescence image contains a minimum of 100 cells and had their respective signal intensities quantified and positive cells counted by the Volocity[®] software. Background threshold was selected based on the Huang's thresholding (Huang and Wang, 1995). Results were plotted in graphs presenting the mean percentage \pm standard deviation. Minimal intensity thresholds were selected as the signal intensity at mean +3 S.D. of negative control, while maximum intensity was selected as the mode of the respective positive control. Frequency distribution in acute hypoxia was analyzed with K-S test. Apoptotic cells were

quantified by their respective caspase-3 positive signal around the cell nucleus. All results were compared statistically by paired *t*-test. The Holm-Bonferroni test was conducted on the resultant *p* values to avoid type I errors and *p* values less than 0.05 were considered statistically significant. Chromatin condensation in microchannel devices had >200 cells counted per replicate ($n = 4$). Dunnett's test was conducted and *p* values less than 0.05 were considered statistically significant.

Results and discussion

Electrode O₂ scavenging characterization

The key proposal of the research reported herein is that spatially localized hypoxia can be induced by electrochemical reduction and removal of the oxygen near an electrode placed at the target hypoxia site. Electrochemical reduction of oxygen is a pH dependent 2- or 4-electron reaction that depletes dissolved O₂ from the diffusion layer next to an electrode and leads to H₂O₂ or OH⁻ (H₂O) respectively. The competition between the

2- and 4- electron pathways is determined by pH and electrode catalyst. Pt strongly promotes the 4e route, with density functional theory (DFT) calculations suggesting that Pt catalyses the O–O bond cleavage and O–H bond formation in reduction of oxygen rather than forming H₂O₂ (Pang et al. 2020). The proposed configuration for electrochemical oxygen scavenging is shown in Figure 1A with a gas permeable membrane Pt/C electrode placed above the cell culture in close proximity to the cells. The PTFE/Pt/C membrane electrode was chosen as scavenger electrode to fulfil the design criteria of oxygen scavenging and promote the 4-electron reduction to H₂O. In terms of O₂ scavenging normalised to geometric area, the Pt/C electrode has a high O₂ reduction current density of ~20 pmol/mm²/s (over an order of magnitude larger than that on gold: -0.9 pmol/mm²/s, Supplementary Figure S5). The favourable Pt/C O₂ reduction can be attributed in part to the high surface area that is created with O₂ pre-adsorbed in proximity to the catalytic Pt particles. The irregular topography of the heterogeneous sintered PTFE/Pt/C electrode (Supplementary Figure S6B–F) allows further advantageous increase in reactive sites for the oxygen reduction reaction.

In BET surface analysis (Supplementary Figure S6G, H) the sintered 5% Pt/C electrode was seen as non-porous (or microporous), with a monolayer N₂ adsorption of 48 ± 7 cm²/mg, giving a BET area of ~330 cm² per electrode. Chronoamperometry on the Pt/C electrodes produced an initial decrease in cathodic current due to reduction of pre-adsorbed oxygen, before reaching steady state diffusion-controlled oxygen reduction (Supplementary Figure S7). Comparing the response from air-pre-equilibrated and post-O₂-scavenged electrodes, 80.3 ± 2.2 nmol of oxygen was estimated to be adsorbed on the electrode (Figure 2A). However, even after long equilibration in N₂ an estimated 40.9 ± 4.1 nmol O₂ is still available for electrochemical reduction (Figure 2B). Assuming the latter is a monolayer of strongly adsorbed oxygen and taking the cross-sectional area of O₂ as 0.147 nm² (Ismail, 1992), this corresponds to 10.83% of the measured BET area. This is consistent with reduction occurring at the Pt sites (5%) with some limited scavenging from immediately adjacent C sites. The increase in adsorbed O₂ after equilibration in air is consistent with further more weakly bound O₂ on the electrode (and thus able to be purged in N₂).

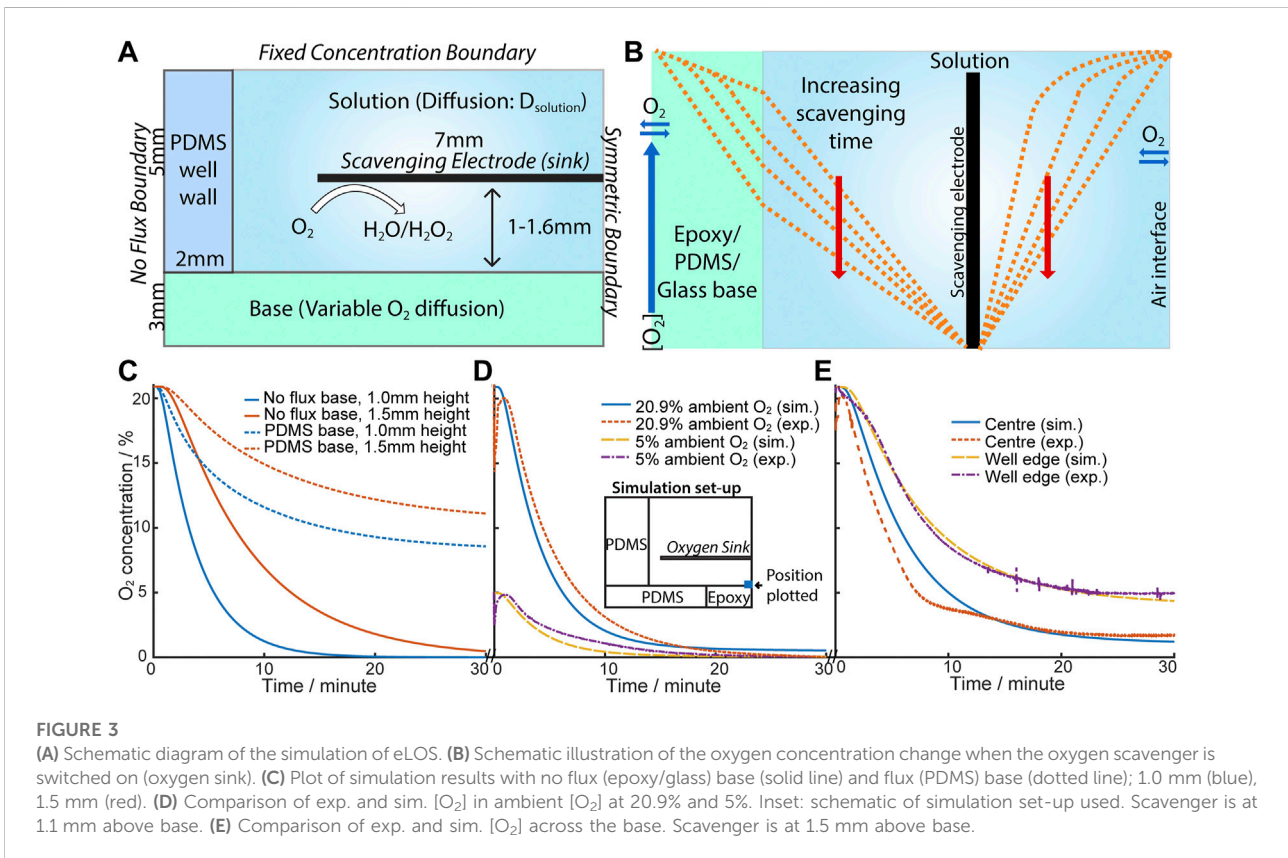
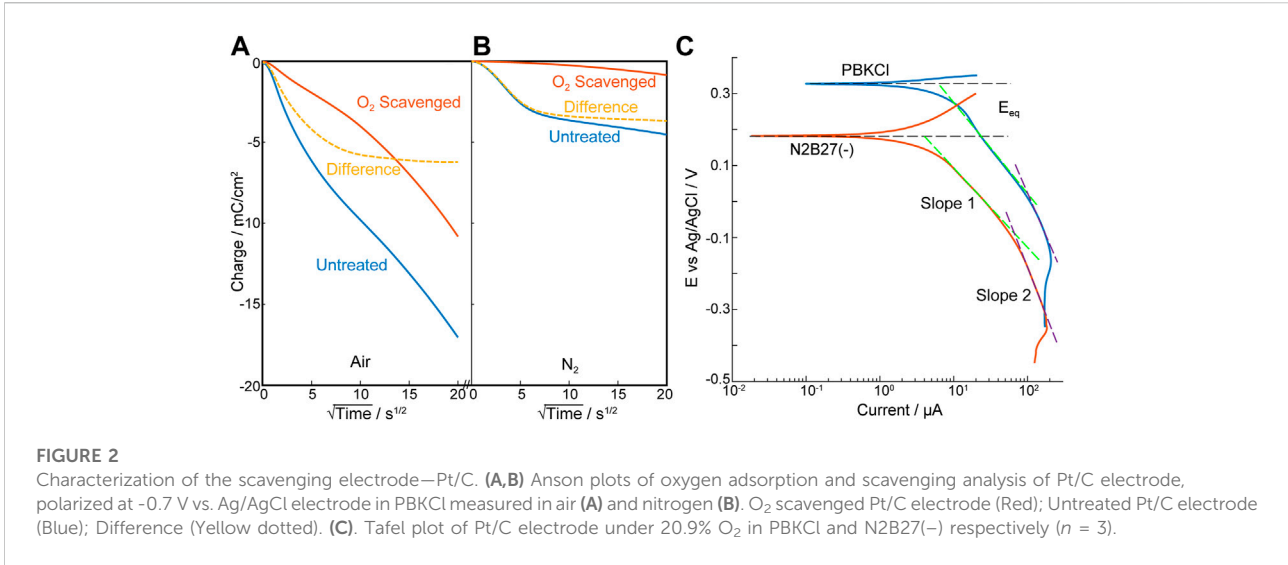
In the oxygen reduction reaction, Pt containing electrodes have typically shown two Tafel slopes (~60mV/Dec and ~120mV/Dec) (Perez et al., 1998; Schmidt et al., 2001; Ge et al., 2015) attributed to the pivot between O and OH or OOH adsorption in the reaction pathway (Wang J. X. et al., 2008). In contrast, Tafel slopes (Figure 2C) on this Pt/C/PTFE electrode suggest much lower catalytic activity (232 ± 10mV/Dec and 492 ± 37mV/Dec). This is reminiscent of graphite fibre/epoxy electrodes reported by Nacamulli and Gileadi (Nacamulli

and Gileadi, 1983) and may be associated with the dominance of graphite and the low Pt loading (5%). However, while increasing the Pt loading might increase the catalytic activity it also increases background electrochemical hydrolysis of water and, importantly, hydrogen microbubble evolution, that could reduce the viability of the cells. The wider cathodic potential window achieved at low Pt loading, without causing H₂ evolution was an advantage in accommodating small solution-dependent shifts observed in the O₂ reduction potential (e.g., in PBKCl at -0.3 V vs. Ag/AgCl) and N2B27(-) culture media at -0.35 V vs. Ag/AgCl) (Supplementary Figure S8). This 5%Pt electrode was thus chosen for this feasibility study.

Electrochemical oxygen-reduction hypoxia model development

The electroreduction process for O₂ can be used to measure oxygen concentration such as in the Clark O₂ electrode, or deployed for scavenging the interfering dissolved oxygen in biosensors, demonstrated by Hahn et al. (1982; Bacon and Hall, 1999). It is investigated here as a method to induce local hypoxia. Spatial focal resolution of hypoxia can be modulated through the shape and size of the electrode and its positioning relative to the target hypoxia site in a cell culture. In the case of lacunar infarcts, the required resolution for a viable experimental *in vitro* model is 2–20 mm, thus electrodes were chosen for this study with dimensions between 8 and 16 mm cross section.

A mathematical model of a scavenging electrode was first built based on a culture-well with dimensions as shown in Figure 1A and having an oxygen scavenging electrode placed above the cell culture, which is permeable to oxygen. Figure 3A shows this as a cross section through half the proposed culture-well, with the symmetric boundary lying through the centre of the culture well (with an O₂ measuring electrode placed at the centre in the base of the well). The well sides and base provide O₂ flux or no-flux boundaries depending on the material used (see Table 1 for the input parameters and boundary conditions). Figure 3B shows a diagram of the expected development of O₂ concentration gradients with time, after the scavenging electrode has been switched on; this anticipates that O₂ scavenging will compete with O₂-diffusion (if any) across the well-base and well-walls. If the well-base allows O₂ flux (e.g., through PDMS, Figure 3C, dotted line), the scavenging electrode at 1 mm height above the base, competes with the influx of O₂ across the base and is only able to reduce [O₂], measured at the centre of the well, to circa 50% of ambient. In contrast, the [O₂] drops towards zero at the no flux well-base (Figure 3C, solid line), and the time required depends on the distance from the scavenging electrode. It is intuitive that distance dependence from the site of ischaemic infarct is also featured in the impact of localised lacunar infarcts.



Based on these predictions an experimental culture-well model was built to characterise the eLOS, and having an oxygen measuring electrode in the well base, to monitor oxygen scavenging. The configuration of the experimental cell is shown in **Figure 3D**, inset; the experimental model contains

flux and no flux interfaces. Although flux of O₂ across the well-base is shown not to be desirable for the final hypoxia model, an initial experimental proof of model system, used an oxygen permeable PDMS structure, which allowed good flexibility in changing and configuring the cell, for characterisation of the

performance of the scavenging electrode. The input values for the theoretical model could accommodate these variations and indeed allowed for a hybrid diffusion barrier along the base.

For example, the initial experimental model had a 4 mm diameter epoxy resin encased Au-O₂-measuring electrode inserted into the PDMS base; the 4 mm epoxy introduced a no-flux boundary area in the centre of the well-base. For a scavenging electrode placed at ~1 mm above the base, the model (Figure 3D) shows a good fit to a scavenging electrode at 1.1 mm from the base and reaches a steady state at ≤2% ambient. With this hybrid diffusion base to the well, hypoxia (defined as < 1.5–2% O₂ (Semenza et al., 1997)) from 20.9% ambient O₂ is produced in ~15 min compared with ~6 min from 5% ambient O₂. hNPCs and cortical neurons are cultured in 5% O₂ so this 6 min timeframe is consistent with that expected in permanent cellular damage which can occur within minutes.

Similar conclusions are drawn for electrodes placed at ~1.5 mm above the base, where good fits to the model are also shown with the measuring electrode placed at different positions across the well-base (Figure 3E). In all cases the greater distance between the scavenger electrode and the well-base, the higher the resultant steady state O₂ concentration; of particular note is the change in steady-state oxygen seen after scavenging, moving across the base, with the electrode monitoring ~9% of ambient oxygen at the centre of the well and higher levels (~27% of ambient) measured at the O₂ monitoring electrode placed near the edge of the well, close to the PDMS well-wall. O₂ flux is not inhibited across this side wall, so the result is intuitive. This also illustrates the potential to design 3-D cell-culture structures with different flux boundaries to simulate different organ and scenario models.

Mapping of dissolved oxygen in cell-culture medium following eLOS

As established above, residual O₂ concentration increased with radial distance from the centre under the scavenging electrode to the outer edge (6 mm), where diffusion of oxygen through the PDMS wall competes with the scavenging. The spatial resolution of oxygen concentrations across the well-base during oxygen scavenging can be further explored for an electrode shaped to selectively cover only a target area in a cell culture (Figure 1B). Figures 4A,B show the [O₂] heat-map for this “half-electrode” positioned at different heights from a no-flux well-base, as predicted from the model. For electrodes at 2.0 mm and 2.7 mm above the base, the model shows that at 20.9% ambient O₂, hypoxia (<1.5% O₂) extends only ~1.2 mm from the scavenging electrode. In these conditions (Figure 4C) only ~85% and 50% of the oxygen can be removed at the well base, respectively for electrodes at 2.0 and 2.7 mm height. However, at 5% ambient O₂ (the normal condition for human cell cultures used in this study) hypoxia is induced even at the base of the well

at 2.0 mm (Figure 4D). This is consistent with the data above for the full electrode. It is also observed that the area of low oxygen maps the electrode shape and dimensions, suggesting the ability to spatially resolve the area of hypoxia with dimensions appropriate to lacunar infarcts.

To further authenticate the models, an O₂ monitoring electrode array was built into the well-base, across the diameter of the well, and was used to confirm the eLOS model results above (Supplementary Figure S9). The experimental data (Figure 4C) shows a reasonable fit with the simulated models at both 2.0 mm and 2.7 mm heights. The model also predicts that for heights below 1.5 mm hypoxia will be achieved at the well-base under the scavenging electrode even at 20.9% ambient. From these data we ascertain that spatial resolution of hypoxia is related to the ambient oxygen concentration, the electrode shape and distance from the hypoxia source. In design of an *in vitro* eLOS culture well, it is also clear that the well-base should be a no flux oxygen boundary and the side walls could be a flux or no-flux oxygen boundary (depending on the study parameters required) to achieve the resolution and control for local hypoxia.

Electrochemically induced hypoxia in hNPCs

Based on this foundation, the eLOS platform was tested to explore its ability to control hypoxia in cultured cells. hNPCs can be cultured at physiological oxygen levels (3–5%) and are more resilient to hypoxia (Figure 5A) (Varga et al., 2022). Cells cultured in 5% O₂ were exposed to electrochemically induced hypoxia for 1–6 h. The cellular response to hypoxia were quantified by the levels of HIF-1α in the cells by immunofluorescent labelling (Figure 5B).

Absence of oxygen inhibits the hydroxylation dependent degradation of HIF-1α which will lead to increased level of HIF-1α under conditions of low oxygen availability. The number of cells with elevated HIF-1α levels positively correlated with duration of eLOS hypoxia (Figures 5C,D): the cellular HIF-1α positive cell ratio changed from 42% of the cells at 1 h to a plateau of 95% at 6 h (Figure 5C). The level of eLOS-induced HIF-1α was comparable with chemical stabilisation by DMOG. The proportion of cells reaching maximum HIF-1α intensity showed a sigmoidal increase with time (Figure 5D, 12% at 1h, 66% at 3h and 73% at 6 h of hypoxia) and no necrotic cells were detected, marked by pyknotic nuclei. These results show that cells impacted by electrochemically induced hypoxia show a canonical HIF-1α hypoxia response; this infers that oxygen levels can be reduced to create a localized hypoxia gradient around the cells by electrochemical O₂ scavenging.

To observe the immediate effects of acute hypoxia, the HIF-1α intensity change of hNPCs was investigated within the first hour of scavenging for an electrode covering the whole culture.

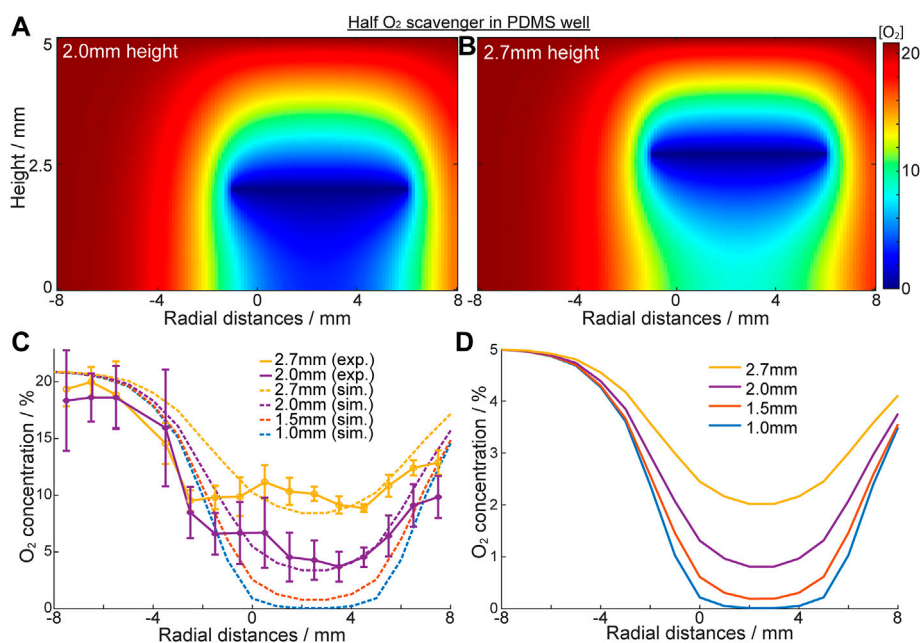


FIGURE 4

Characterisation of oxygen concentration "patterning" with "half" scavenging electrode at -1mm–6 mm. (A,B) Heat map of oxygen concentration of the solution inside the PDMS well with a no flux base in $[O_2]_{\text{ambient}} = 20.9\%$. Oxygen scavenging electrode is a half circle, positioned at 2.0 mm (A) and 2.7 mm (B) height. (C) Oxygen concentration across the well base when electrode is placed at different heights. Solid line: experimental results; dotted line: simulation results. (D) Simulated $[O_2]$ in the same system when $[O_2]_{\text{ambient}} = 5\%$ (cell culture ambient).

An upregulation of the HIF-1 α signal was detected within 20 min of hypoxic insult ($p = 0.005$) (Figure 6A) and is clearly observed in the nucleus of the cells (Figure 6B). Mean HIF-1 α intensity is shifted from 598 ± 21 A.U. in the negative control towards ≥ 650 A.U. ($p < 0.05$) under focal hypoxia (Figure 6C), demonstrating the capability of the eLOS to induce a rapid hypoxic response as suggested by the characterization results reported above, faster than that observed with DMOG (250 μ M) treatment (Supplementary Figure S10).

Potential side products of eLOS oxygen reduction

To ensure that the results obtained above could be attributed to hypoxia only, the products of electrochemical oxygen reduction like H₂O₂ and OH⁻ (pH) were investigated. pH can affect most cellular processes such as metabolism and growth. Peroxide is known to lead to apoptosis at high concentrations (Schmidt et al., 2001; Beyhan et al., 2015). The impact of the O₂ reduction products on the culture medium were studied from 30 min and up to 3 h where further changes were not observed. As discussed in section 3.1, the Pt catalysed reduction of oxygen is expected to favour the 4-electron route to H₂O, rather than the 2-electron route to H₂O₂. Nevertheless, the oxygen

electroreduction was followed under cell-culture conditions to assess the potential for H₂O₂ as a minor side product.

In buffered media solutions, as would be used in these *in vitro* cell based experiments, no pH changes were detected during eLOS under all conditions tested (Table 3). This is as expected for the 4-electron reduction in buffered solution. Low concentration of H₂O₂ was detected in a simple buffer solution - PBKCl medium (800 nM H₂O₂ was estimated from the AUR fluorometric method Supplementary Figure S3) but still below biologically critical H₂O₂ concentrations. With commonly used DMEM/F-12 cell-culture medium, only a trace of H₂O₂ was detected between 30 min and 3 h eLOS (estimated to be ≤ 400 nM H₂O₂ in both cases, close to the formal detection limit Supplementary Figure S4). Gulden *et al.* (2010) estimate a median cytotoxic dose of 870 nM/10⁷ C6 glioma cells, with cells able to remove H₂O₂ with time below this concentration, due to the normal cell scavenging mechanisms.

However, adding 12.5 U/mL catalase as present in the culture medium formula, is expected to totally remove any H₂O₂ generated. Indeed, no H₂O₂ was detected in any samples under these conditions. It should also be noted that diffusion of H₂O₂ from the electrode is not likely to extend any further than the distances seen in the O₂ depletion zones in Figures 3A,B and the concentration will diminish with distance from the

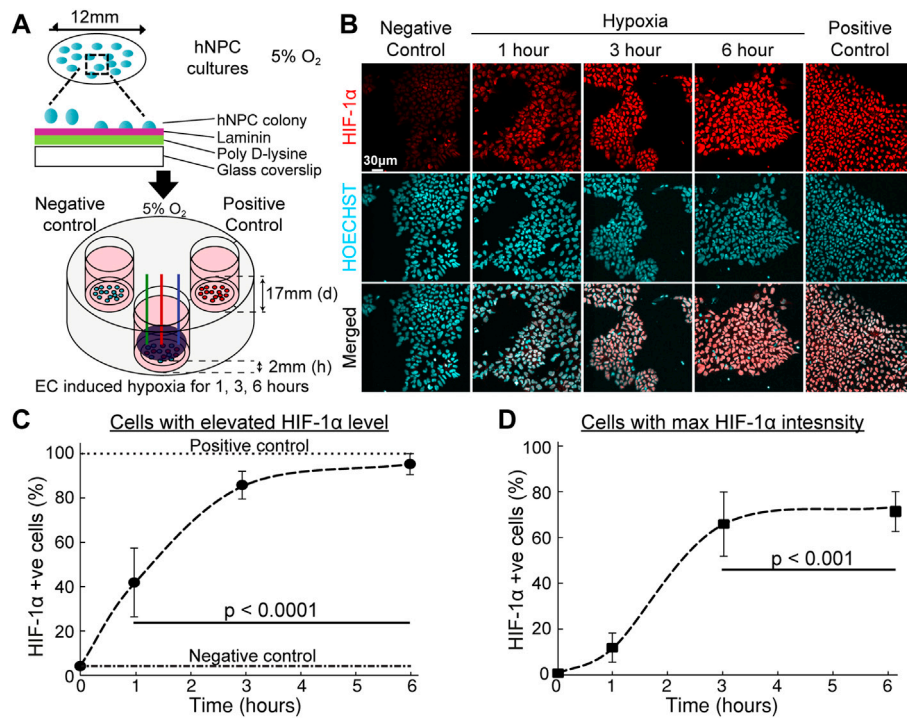


FIGURE 5 Hypoxic response of hNPCs in electrochemical incubator. **(A)** Schematic procedure of the preparation of hNPCs and scavenging system set-up. **(B)** Representative confocal images of cell cultures with immunofluorescent staining on HIF-1α (red) and nucleus (blue). **(C, D)** Quantitative analysis of HIF-1α response under long duration of hypoxic insult. ($n = 3$, error bars indicate standard deviation). **(C)** Percentage of cells with HIF-1α fluorescent intensity above base HIF-1α intensity. **(D)** Percentage of cells attaining maximum HIF-1α fluorescence intensity, compared with HIF-1α intensity in the presence of DMOG, see [Supplementary Figure S10](#).

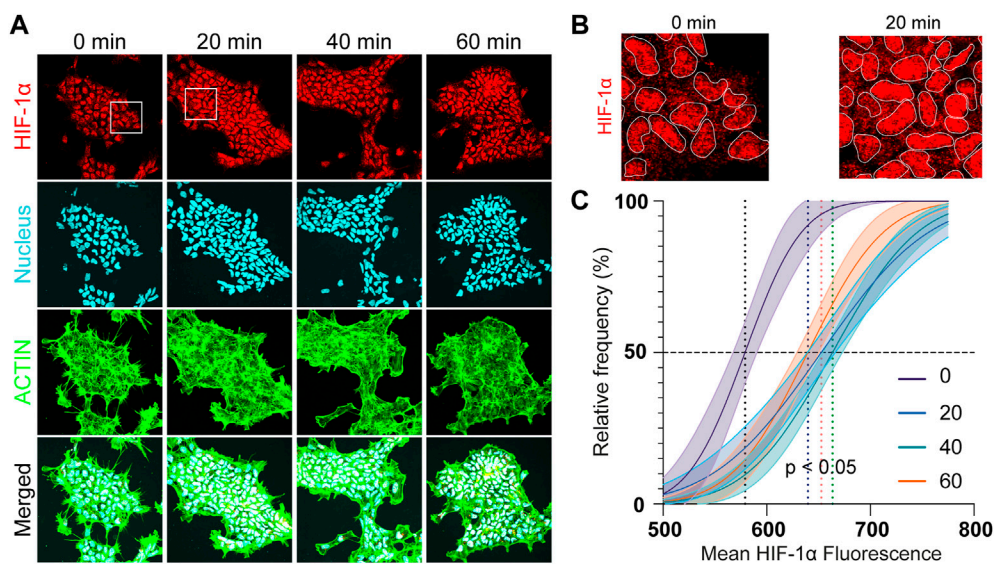


FIGURE 6 Acute hypoxia of hNPCs. **(A)** Representative confocal images of hNPCs in acute hypoxia: HIF-1α (red); nucleus (cyan); actin (green). **(B)** Zoom in of the confocal images for comparison. **(C)** Frequency distribution analysis of the mean HIF-1α intensity in the cells under different hypoxia durations.

TABLE 3 pH and H₂O₂ concentration under eLOS oxygen scavenging.

Scavenging conditions (n = 3)	Measurand	Time (mins)		
		0	30	180
PBKCl	pH	7.3 ± 0.1	7.3 ± 0.1	7.3 ± 0.1
PBKCl	[H ₂ O ₂]	Negative	0.8 ± 0.3 μM	0.8 ± 0.3 μM
PBKCl with catalase	pH	7.3 ± 0.1	7.3 ± 0.1	7.2 ± 0.1
PBKCl with catalase	[H ₂ O ₂]	Negative	Negative	Negative
DMEM/F-12	pH	7.6 ± 0.1	7.6 ± 0.1	7.6 ± 0.1
DMEM/F-12	[H ₂ O ₂]	Negative	0.8 ± 0.3 μM	Trace amount
DMEM/F-12 with catalase	pH	7.4 ± 0.1	7.4 ± 0.1	7.4 ± 0.1
DMEM/F-12 with catalase	[H ₂ O ₂]	Negative	Negative	Negative

electrode, which suggests that only a subtoxic amount of H₂O₂ will be present at any point away from the electrode surface and that all H₂O₂ will be consumed by catalase. Furthermore, the highest H₂O₂ concentrations would be expected immediately after the onset of oxygen scavenging when the oxygen concentration is highest; the rate of oxygen reduction reaction, interpreted from the current, reduces with time to a steady state (Figure 3). Thus, the rate of production of H₂O₂ (if any) will be highest at the start, yet it remained below the detection limit in the presence of catalase. The data indicate that apoptosis is unlikely to result from the products of oxygen reduction in the proposed 4 electron electroreduction of oxygen.

Nevertheless, these results should be considered in context; the impact of H₂O₂ on hNPCs morphology and apoptosis, is indicated by the presence of caspase-3, a key mediating protein that activates cell death. Immunofluorescent images (Figure 7A) showed hNPC nuclei are intact at all concentrations of H₂O₂ in catalase (+) culture medium and no sign of caspase-3 activation was seen, even up to 100 μM H₂O₂. This is more than 3 orders of magnitude higher than the H₂O₂ detected from the electroreduction of O₂, in the absence of catalase. In catalase (-) medium, caspase-3 was activated when H₂O₂ reached 10 μM but morphological changes like actin degradation, nuclear condensation and fragmentation were only observed at 100 μM H₂O₂ (Figure 7B). Thus, these effects only occur at concentration higher than H₂O₂ accumulation during eLOS even in the absence of catalase. These results strongly indicate that eLOSS only results in hypoxic stress to the cells.

Tailor made hypoxia gradient in single culture

To take a further step towards localised eLOS hypoxia within a cell culture without physical separation of cells, the “half-electrode” eLOS system described and characterized above with a no-flux base was transferred to cell culture. A target-area of cells in a bulk culture volume was defined by the shape of an electrode placed above the culture. The “half-electrode” format

described in Figure 1B was chosen to define the target shape and the effect of eLOS was characterized by the gradient of HIF-1α intensity in immunofluorescent images of hNPCs after hypoxia. This correlated with the cells’ position on the well base, with respect to the electrode (Figure 8A) and with the local O₂ spatial calibration in this format (Figure 4).

Quantifying the HIF-1α intensity, verified that maximum hypoxic response was observed underneath the oxygen scavenging electrode (shaded region, Figures 8B,C) and reduced hypoxic stress was apparent at the edges due to the influx of oxygen from the air-water interface and across the PDMS-electrolyte interface. For the electrode positioned at 2.0 mm above the cells, the increased HIF-1α levels “leaked” slightly beyond the edges of the electrode shadow into the uncovered area. In contrast at 2.7 mm above the cells, only the area under the electrode showed statistically significant increase in HIF-1α levels.

Unexpectedly, the maximum HIF-1α intensity in both cases were similar despite having a lower oxygen concentration beneath the electrode at 2.0 mm above the cells (Figure 4D). However, this is consistent with the activation of proline 402 in the hypoxia recognition element of HIF-1α at circa 15 mmHg (2%) O₂ (Figure 4D predicts 2% O₂ for the 2.7 mm eLOS), whereas proline 564 is activated at circa 4 mmHg (0.5%) O₂ (Figure 4D predicts 0.8% O₂ for the 2.0 mm eLOS), but resulting in a similar accumulation rate for HIF-1α of the hNPCs (Chan et al., 2005). In the negative control and unpolarized electrode culture, HIF-1α intensity remained low and uniform across the cells, proving the HIF-1α readout was not caused by restriction of oxygen diffusion due to the physical presence of the scavenging electrode. This result provides a good basis to anticipate that further experimental models of localised hypoxia could yield new perspectives on the impact of an acute hypoxic shock in small scaled infarcts.

Focal infarct model

Based on the results demonstrating acute focal hypoxia modelling capability, eLOS was applied in a basic lacunar

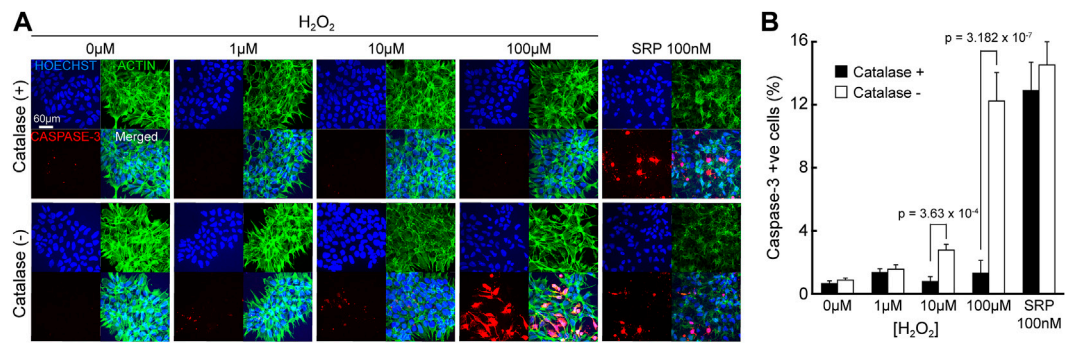


FIGURE 7
eLOSS does not induce pH or apoptotic stress. **(A)** Confocal images of hNPCs after 4-h culture in culture medium containing H₂O₂ with or without catalase: Nucleus (blue), Caspase-3 (red), Actin (green). **(B)** Quantitative analysis of percentage of cells with caspase-3 activation under different H₂O₂ concentrations. SRP: staurosporine.

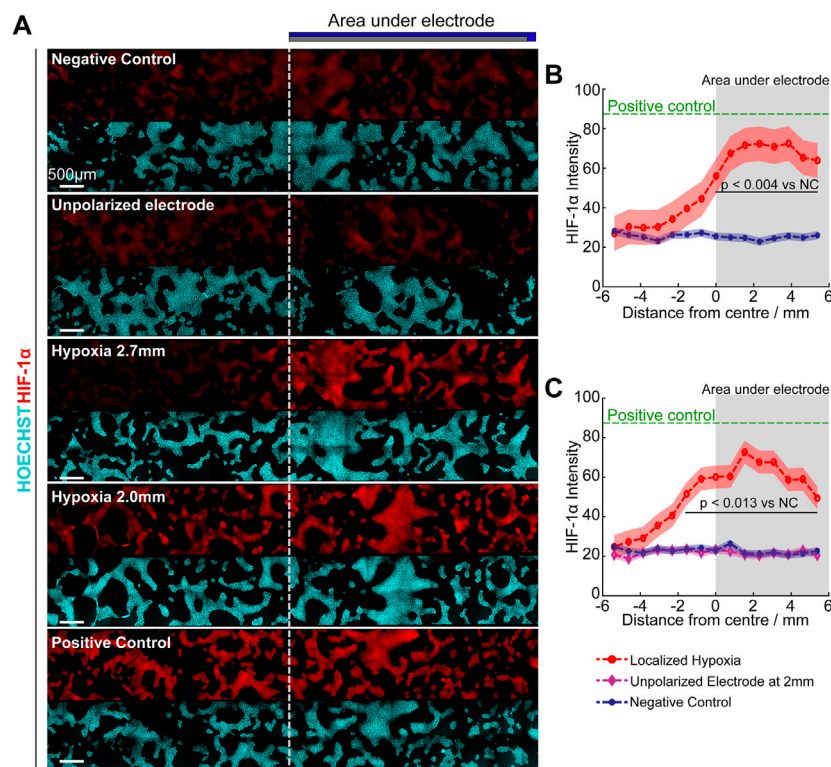


FIGURE 8
Focal hypoxia in a well. **(A)** Confocal images of cultures under different hypoxia conditions. Dotted line indicates the border of the electrode. **(B,C)** Quantitative analysis of mean HIF-1α intensity (curve) ± standard deviation (shaded region) across the base under 2.7 mm **(B)** and 2.0 mm **(C)** height of scavenging electrode, analysed with Tukey multiple comparison. Green: Positive control (250 μM DMOG); Red: Scavenging electrode polarized; Purple: Scavenging electrode unpolarized; Blue: Negative control. Grey shaded area indicates regions under oxygen scavenging electrode.

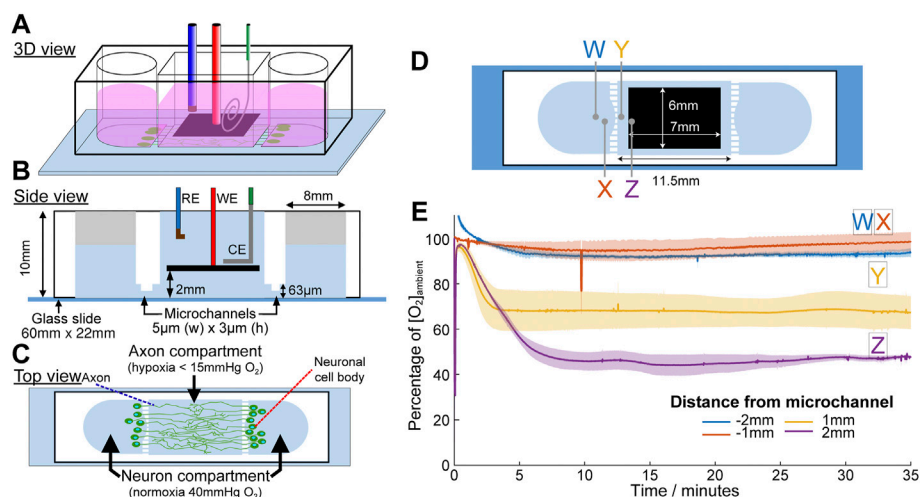


FIGURE 9

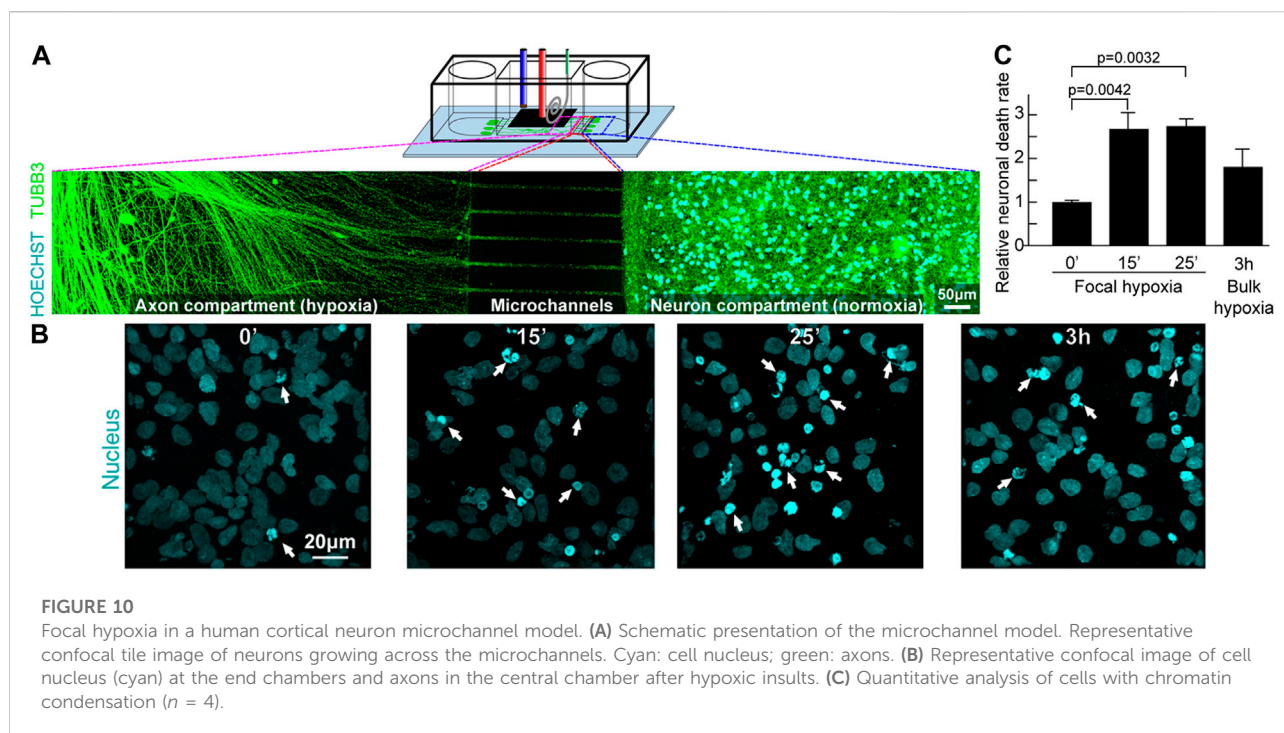
Microchannel device designed for the application of acute focal hypoxia in the human cortical brain model. Schematic diagrams for the device at 3D view (A), side view (B) and top view (C). Oxygen is only scavenged from the middle chamber where only axons are allowed to grow into. (D) Positions of the oxygen concentration measured were indicated by crosses in the respective colours. (E) Plot of oxygen concentration at different positions under eLOS, measured by a gold electrode.

infarct model. Lacunar infarcts appear in the white matter of the brain around the axons of neurons, millimetres away from the cell body of the neurons. A compartmentalised cell culture system was designed to miniaturise and confine hypoxia to the axons, as commonly observed in small vessel diseases (Figures 9A–C). Microchannels of 5 μm (h) \times 3 μm (w) (profiled in Supplementary Figure S2) were designed to connect the neuron side chambers with a central chamber such that only the axons can grow into it. The scavenging electrode was positioned at 2 mm above the base of the central chamber and steady state oxygen concentration was achieved in 5 min (Figures 9D,E). In the central chamber, the lowest level of oxygen (\sim 55% decrease) occurred as expected, in the area furthest from the microchannels (position Z in the diagram), followed by 30% decrease at 1 mm from the microchannel (position Y). These contrast with the measurements in the side chambers where mirror positions (position W, X, respectively) remain similar to the ambience, irrespective of scavenging in the central chamber. These results demonstrate a highly efficient oxygen scavenging for focusing hypoxia in the central chamber, while leaving the side chambers in normoxia.

Building upon the characterization results, the focal infarct model was developed from a PSC-derived human cortical neuron culture. Neurons were prepared and seeded into the side chambers; they had cell bodies restricted to those chambers by the microchannel dimensions (Figure 10A). Meanwhile the axons (stained green with TUBB3 in Figure 10A) could grow freely through the microchannels into the central chamber. To simulate a transient hypoxic shock, axons that had grown into the

central chamber were subjected to 15 min and 25 min acute hypoxia, followed by reperfusion to normoxia for 18 h. As seen in Figure 10B, most neurons that are not been exposed to hypoxia had spherical or ovoid nucleus, commonly seen in most cell types. When the cells were exposed to hypoxia, significantly more cells had a different nuclear morphology, showing nuclear fragmentations and chromatin condensations that are associated with cell death. Quantifying the neuronal death rate in the side chambers, that had not been directly exposed to hypoxia, except through the connection of their axons (Figure 10C), the neurons showed significant 2.68 ± 0.38 -fold ($p = 0.004$) and 2.74 ± 0.17 -fold ($p = 0.003$) increase in chromatin condensation, respectively for 15 and 25 min axon hypoxia (normalised against the negative control with 10% cell death occurring normally after the cell seeding). It is also observed experimentally that despite the significant increase in neuronal death after acute hypoxia and reoxygenation, some neurons remain intact. As many axons extended only in the cell body compartment, this may correlated with the neurons which did not grow processes through the microchannels into the central chamber and thus these axons were able to escape focal hypoxia.

In contrast, 3h bulk ambient diffusion-based hypoxia followed by 18-h reoxygenation, exerted on both the central and side chambers, so that both neuron cell bodies and axons were in hypoxia, showed only 1.80 ± 0.41 fold ($p = 0.175$) increase in chromatin condensation, despite the hypoxic condition lasting much longer. These observations support a previous report that reducing oxygen concentration abruptly leads to more permanent neurological damage (Ferdinand and Roffe, 2016). The current study is the first to demonstrate experimentally that



localised axonal hypoxic stress can lead to significant increase of neuronal death. The rate of oxygen change (abrupt vs. gradual) is critical to cell fate, and reinforces the case that incubator-dependent hypoxia models provide different information to that applicable to acute hypoxia studies. However, this is just the beginning of a new methodology in the study of focal hypoxia and further investigations can now emerge to elucidate the signaling pathways involved.

Conclusion

This study demonstrated a novel electrochemical methodology for modelling *in vitro* acute focal hypoxia on human cortical neurons. Adjusting the vertical height, size and position of an electrode above a cell culture and controlling oxygen concentration through electrochemical oxygen scavenging, produces focal hypoxia that is spatiotemporally relevant to simulation of lacunar infarcts and neuronal damage. The methodology does not require additional chemicals or pumps and the $[O_2]$ can be reduced locally to hypoxia in less than 6 and 15 min at 40 and 159 mmHg ambience, respectively. This compares with 3 h in gas exchange-based hypoxia.

The potential for this methodology is demonstrated in the elevated HIF-1 α levels positively correlated with duration and position of eLOS hypoxia in hNPCs. However, one of the most significant findings of this study with its novel hypoxia

methodology, is its successful adoption in focal acute hypoxia in a human cortical neuron model of lacunar infarct. Using a microfluidic design providing spatial separation of neurons from their axons, a focal acute hypoxic insult on axons translated into significantly more chromatin condensation and nuclear fragmentation in connected human cortical neurons, that were cultured at normoxia, than in diffusion-based bulk hypoxia involving both the axons and neurons.

There may be significance from this finding in the study of neurodegenerative diseases. Historically, the main focus of research has been on neurons in the brain's gray matter. Despite that, in Alzheimer's disease white matter lesions occur before the onset of clinical symptoms and their accumulation correlates with the symptom severity. White matter is located at the distal end of the brain's circulatory supply and this makes it relatively more susceptible than grey matter to changes in oxygen, glucose concentration and blood pressure. It consists mainly of axons, surrounded by myelin, produced by oligodendrocytes. Myelin integrity and axonal health are key to white matter health and microglia (situated in the white matter) are affected by vascular, axonal or myelin damage caused by micro hypoxic insults, which may perpetuate white matter lesions.

We believe that this eLOS platform overcomes many hurdles to study acute focal hypoxia *in vitro* cell culture. eLOS can improve spatiotemporal control of hypoxia in timescales of acute and chronic hypoxia (reduction rate and duration), and by more accurately modelling diseases spatiotemporally.

Although this proof of principle, presents a small vessel diseases lacunar infarct model, this versatile system can be adapted for studying tumor microenvironment, myocardial infarction and other ischaemic systems *in vitro* with an advantage of live imaging of the underlying heterotypic interactions and their pathological mechanisms that will impact therapeutic strategies.

This exciting and potentially significant result opens the door for eLOS to be used in studying the signalling pathways and transcription factors activated in focal acute hypoxia and investigate focal hypoxia-related mechanisms in tissue culture and 3D organelles that will impact therapeutic strategies.

Data availability statement

The original contributions presented in the study are included in the article/[Supplementary Material](#), further inquiries can be directed to the corresponding author.

Author contributions

The technique of electrochemical scavenging arises from previous work from EH. JW, BV, RK, and EH designed the experiments reported herein; JW conducted the computer simulation, electrochemistry experiments and microfluidic device fabrication; BV taught JW cell culturing and JW conducted cell-related experiments; JW, BV, RK, and EH analyzed the results; RK and EH supervised the project. JW wrote the draft of the manuscript and all authors contributed to the article and approved the submitted version.

Funding

The core microfluidic analyte flux model in micro-reaction-cells with flux and no-flux boundary conditions

References

- Alber, J., Alladi, S., Bae, H. J., Barton, D. A., Beckett, L. A., Bell, J. M., et al. (2019). White matter hyperintensities in vascular contributions to cognitive impairment and dementia (VCID): Knowledge gaps and opportunities. *Alzheimers Dement.* 5, 107–117. doi:10.1016/j.trci.2019.02.001
- Allen, C. B., Schneider, B. K., and White, C. W. (2001). Limitations to oxygen diffusion and equilibration in *in vitro* cell exposure systems in hyperoxia and hypoxia. *Am. J. Physiol. Lung Cell. Mol. Physiol.* 281 (4), L1021–L1027. doi:10.1152/ajplung.2001.281.4.L1021
- Anderson, D., Yu, T. W., Phillips, B. J., and Schmezer, P. (1994). The effect of various antioxidants and other modifying agents on oxygen-radical-generated DNA damage in human lymphocytes in the COMET assay. *Mutat. Res.* 307 (1), 261–271. doi:10.1016/0027-5107(94)90300-X
- Ando, Y., Ta, H. P., Yen, D. P., Lee, S. S., Raola, S., and Shen, K. (2017). A microdevice platform recapitulating hypoxic tumor microenvironments. *Sci. Rep.* 7 (1), 15233. doi:10.1038/s41598-017-15583-3
- Bacon, N. C., and Hall, E. A. H. (1999). A sandwich enzyme electrode giving electrochemical scavenging of interferents. *Electroanalysis* 11 (10–11), 749–755. doi:10.1002/(SICI)1521-4109(199907)11:10/11<749::AID-ELAN749>3.0.CO;2-G
- Beyhan, S., Sahin, N. E., Pronier, S., Leger, J. M., and Kadrgan, F. (2015). Comparison of oxygen reduction reaction on Pt/C, Pt-Sn/C, Pt-Ni/C, and Pt-Sn-Ni/C catalysts prepared by bönnemann method: A rotating ring disk electrode study. *Electrochimica Acta* 151, 565–573. doi:10.1016/j.electacta.2014.11.053
- Brennan, M. D., Rexus-Hall, M. L., Elgass, L. J., and Eddington, D. T. (2014). Oxygen control with microfluidics. *Lab. Chip* 14 (22), 4305–4318. doi:10.1039/C4LC00853G
- Carreau, A., El Hafny-Rahbi, B., Matejuk, A., Grillon, C., and Kieda, C. (2011). Why is the partial oxygen pressure of human tissues a crucial parameter? Small molecules and hypoxia. *J. Cell. Mol. Med.* 15 (6), 1239–1253. doi:10.1111/j.1582-4934.2011.01258.x

was supported by funding from MRC (#MR/R025444/1, EH, JW). Some of this work on NPCs was supported by the Paul G Allen Frontiers Group, Allen Distinguished Investigator Award (#12076, BV, RK, EH). JW received a doctoral studentship from the Croucher Foundation and Cambridge Trust (#10382975).

Acknowledgments

The authors thank Fernando Daniel León-Cázares for his assistance in obtaining SEM micrographs.

Conflict of interest

The authors declare that the research was conducted in the absence of any commercial or financial relationships that could be construed as a potential conflict of interest.

Publisher's note

All claims expressed in this article are solely those of the authors and do not necessarily represent those of their affiliated organizations, or those of the publisher, the editors and the reviewers. Any product that may be evaluated in this article, or claim that may be made by its manufacturer, is not guaranteed or endorsed by the publisher.

Supplementary material

The Supplementary Material for this article can be found online at: <https://www.frontiersin.org/articles/10.3389/fcell.2022.968341/full#supplementary-material>

- Chan, D. A., Sutphin, P. D., Yen, S. E., and Giaccia, A. J. (2005). Coordinate regulation of the oxygen-dependent degradation domains of hypoxia-inducible factor 1 alpha. *Mol. Cell. Biol.* 25 (15), 6415–6426. doi:10.1128/MCB.25.15.6415-6426.2005
- Chowdhury, R., Leung, I. K. H., Tian, Y.-M., Abboud, M. I., Ge, W., Domene, C., et al. (2016). Structural basis for oxygen degradation domain selectivity of the HIF prolyl hydroxylases *Nat. Commun.* 7, 12673. doi:10.1038/ncomms12673
- Cummins, E. P., Seeballuck, F., Keely, S. J., Mangan, N. E., Callanan, J. J., Fallon, P. G., et al. (2008). The hydroxylase inhibitor dimethylxalylglycine is protective in a murine model of colitis. *Gastroenterology* 134 (1), 156–165. e1. doi:10.1053/j.gastro.2007.10.012
- Daniele, S. G., Trummer, G., Hossmann, K. A., Vrselja, Z., Benk, C., Gobeske, K. T., et al. (2021). Brain vulnerability and viability after ischaemia. *Nat. Rev. Neurosci.* 22 (9), 553–572. doi:10.1038/s41583-021-00488-y
- Ferdinand, P., and Roffe, C. (2016). Hypoxia after stroke: A review of experimental and clinical evidence. *Exp. Transl. Stroke Med.* 8 (1), 9. doi:10.1186/s13231-016-0023-0
- Ge, X., Sumboja, A., Wu, D., An, T., Li, B., Goh, F. W. T., et al. (2015). Oxygen reduction in alkaline media: From mechanisms to recent advances of catalysts. *ACS Catal.* 5 (8), 4643–4667. doi:10.1021/acscatal.5b00524
- Ghosal, K., and Freeman, B. D. (1994). Gas separation using polymer membranes: An overview. *Polym. Adv. Technol.* 5, 673–697. doi:10.1002/pat.1994.220051102
- Hahn, C. E. W., Hall, E. A., Maynard, P., and Albery, W. J. (1982). A sandwich electrode for multi-gas analysis: A prototype. *Br. J. Anaesth.* 54 (6), 681–687. doi:10.1093/bja/54.6.681
- Hernansanz-Agustín, P., Izquierdo-Alvarez, A., Sanchez-Gomez, F. J., Ramos, E., Villa-Pina, T., Lamas, S., et al. (2014). Acute hypoxia produces a superoxide burst in cells. *Free Radic. Biol. Med.* 71, 146–156. doi:10.1016/j.freeradbiomed.2014.03.011
- Herzog, N., Johnstone, A., Bellamy, T., and Russell, N. (2021). Characterization of neuronal viability and network activity under microfluidic flow. *J. Neurosci. Methods* 358, 109200. doi:10.1016/j.jneumeth.2021.109200
- Huang, L.-K., and Wang, M.-J. J. (1995). Image thresholding by minimizing the measures of fuzziness. *Pattern Recognit.* 28 (1), 41–51. doi:10.1016/0031-3203(94)E0043-K
- Imtiyaz, H. Z., Williams, E. P., Hickey, M. M., Patel, S. A., Durham, A. C., Yuan, L. J., et al. (2010). Hypoxia-inducible factor 2alpha regulates macrophage function in mouse models of acute and tumor inflammation. *J. Clin. Invest.* 120 (8), 2699–2714. doi:10.1172/JCI39506
- Islam, Md.M., and Kant, R. (2011). Generalization of the Anson equation for fractal and nonfractal rough electrodes. *Electrochimica Acta* 56 (12), 4467–4474. doi:10.1016/j.electacta.2011.02.047
- Ismail, I. M. K. (1992). Cross-sectional areas of adsorbed nitrogen, argon, krypton, and oxygen on carbons and fumed silicas at liquid nitrogen temperature. *Langmuir* 8 (2), 360–365. doi:10.1021/la00038a006
- Li, C., Chaung, W., Mozayan, C., Chabra, R., Wang, P., and Narayan, R. K. (2016). A new approach for on-demand generation of various oxygen tensions for *in vitro* hypoxia models. *PLoS ONE* 11 (5), e0155921. doi:10.1371/journal.pone.0155921
- Liu, S., Wu, X., He, S., Song, X., Shang, F., and Zhao, X. (2020). Identification of white matter lesions in patients with acute ischemic lesions using U-net. *Front. Neurology* 11, 1008. doi:10.3389/fneur.2020.01008
- Martinez Sosa, S., and Smith, K. J. (2017). Understanding a role for hypoxia in lesion formation and location in the deep and periventricular white matter in small vessel disease and multiple sclerosis. *Clin. Sci.* 131 (20), 2503–2524. doi:10.1042/CS20170981
- Nacamulli, L., and Gileadi, E. (1983). Electrochemical properties of graphite fibre/ epoxy composite electrodes. *J. Appl. Electrochem.* 13 (1), 73–78. doi:10.1007/BF00615889
- Perez, J., Gonzalez, E. R., and Ticianelli, E. A. (1998). Oxygen electrocatalysis on thin porous coating rotating platinum electrodes. *Electrochimica Acta* 44 (8), 1329–1339. doi:10.1016/S0013-4686(98)00255-2
- Piret, J.-P., Mottet, D., Raes, M., and Michiels, C. (2002). CoCl₂, a chemical inducer of hypoxia-inducible factor-1, and hypoxia reduce apoptotic cell death in hepatoma cell line HepG2. *Ann. N. Y. Acad. Sci.* 973 (1), 443–447. doi:10.1111/j.1749-6632.2002.tb04680.x
- Prins, N. D., and Scheltens, P. (2015). White matter hyperintensities, cognitive impairment and dementia: An update. *Nat. Rev. Neurosci.* 11 (3), 157–165. doi:10.1038/nrn.2015.10
- Rexius-Hall, M. L., Rehman, J., and Eddington, D. T. (2017). A microfluidic oxygen gradient demonstrates differential activation of the hypoxia-regulated transcription factors HIF-1α and HIF-2α. *Integr. Biol.* 9 (9), 742–750. doi:10.1039/c7ib00099e
- Saikumar, P., and Venkatachalam, M. A. (2003). Role of apoptosis in hypoxic/ischemic damage in the kidney. *Semin. Nephrol.* 23 (6), 511–521. doi:10.1053/S0270-9295(03)00130-X
- Schmidt, T. J., Paulus, U., Gasteiger, H., and Behm, R. (2001). The oxygen reduction reaction on a Pt/carbon fuel cell catalyst in the presence of chloride anions. *J. Electroanal. Chem.* 508 (1–2), 41–47. doi:10.1016/S0022-0728(01)00499-5
- Semenza, G. L. (2001). Hypoxia-inducible factor 1: Oxygen homeostasis and disease pathophysiology. *Trends Mol. Med.* 7 (8), 345–350. doi:10.1016/S1471-4914(01)02090-1
- Semenza, G. L., AganiF.Booth, G., Forsythe, J., IyerN.Jiang, B. H., et al. (1997). Structural and functional analysis of hypoxia-inducible factor 1. *Kidney Int.* 51 (2), 553–555. doi:10.1038/ki.1997.77
- Sharp, F. R., and Bernaudin, M. (2004). HIF1 and oxygen sensing in the brain. *Nat. Rev. Neurosci.* 5 (6), 437–448. doi:10.1038/nrn1408
- Smith, E. E., Schneider, J. A., Wardlaw, J. M., and Greenberg, S. M. (2012). Cerebral microinfarcts: The invisible lesions. *Lancet. Neurol.* 11 (3), 272–282. doi:10.1016/S1474-4422(11)70307-6
- Snyder, B. D., Simone, S. M., Giovannetti, T., and Floyd, T. F. (2021). Cerebral hypoxia: Its role in age-related chronic and acute cognitive dysfunction. *Anesth. Analg.* 132 (6), 1502–1513. doi:10.1213/ANE.00000000000005525
- Storti, F., Santambrogio, S., Crowther, L. M., Otto, T., Abreu-Rodriguez, I., Kaufmann, M., et al. (2014). A novel distal upstream hypoxia response element regulating oxygen-dependent erythropoietin gene expression. *Haematologica* 99 (4), e45–e48. doi:10.3324/haematol.2013.102707
- Thomas, P. C., Raghavan, S. R., and Forry, S. P. (2011). Regulating oxygen levels in a microfluidic device. *Anal. Chem.* 83 (22), 8821–8824. doi:10.1021/ac202300g
- Varga, B. V., Faiz, M., Pivonkova, H., Khelifi, G., Yang, H., Gao, S., et al. (2022). Signal requirement for cortical potential of transplantable human neuroepithelial stem cells. *Nat. Commun.* 13 (1), 2844. doi:10.1038/s41467-022-29839-8
- Wang, C. J., Li, X., Lin, B., Shim, S., Ming, G. L., and Levchenko, A. (2008a). A microfluidics-based turning assay reveals complex growth cone responses to integrated gradients of substrate-bound ECM molecules and diffusible guidance cues. *Lab. Chip* 8 (2), 227–237. doi:10.1039/B713945D
- Wang, J. X., Uribe, F. A., Springer, T. E., Zhang, J., and Adzic, R. R. (2008b). Intrinsic kinetic equation for oxygen reduction reaction in acidic media: The double Tafel slope and fuel cell applications. *Faraday Discuss.* 140 (0), 347–362. doi:10.1039/B802218F
- Wang, R., Jin, F., and Zhong, H. (2014). A novel experimental hypoxia chamber for cell culture. *Am. J. Cancer Res.* 4 (1), 53–60.
- Ye, S., Dong, S., Tan, J., Chen, L., Yang, H., Chen, Y., et al. (2019). White-matter hyperintensities and lacunar infarcts are associated with an increased risk of Alzheimer's disease in the elderly in China. *J. Clin. Neurol.* 15 (1), 46–53. doi:10.3988/jcn.2019.15.1.46