



Patterns of Convergence and Divergence Between Bipolar Disorder Type I and Type II: Evidence From Integrative Genomic Analyses

Yunqi Huang^{1,2,3†}, Yunjia Liu^{1,2,3†}, Yulu Wu^{1,2,3†}, Yiguo Tang^{1,2,3}, Mengting Zhang^{1,2,3}, Siyi Liu^{1,2,3}, Liling Xiao^{1,2,3}, Shiwan Tao^{1,2,3}, Min Xie^{1,2,3}, Minhan Dai^{1,2,3}, Mingli Li^{1,2,3}, Hongsheng Gui^{4,5*} and Qiang Wang^{1,2,3*}

OPEN ACCESS

Edited by:

Cunyou Zhao,
Southern Medical University, China

Reviewed by:

Xiao Xiao,
Kunming Institute of Zoology (CAS),
China
Jian-Huan Chen,
Jiangnan University, China

*Correspondence:

Hongsheng Gui
hgui1@hfhs.org
Qiang Wang
wangqiang130@scu.edu.cn

[†]These authors have contributed
equally to this work and share first
authorship.

Specialty section:

This article was submitted to
Epigenomics and Epigenetics,
a section of the journal
Frontiers in Cell and Developmental
Biology

Received: 30 May 2022

Accepted: 21 June 2022

Published: 15 July 2022

Citation:

Huang Y, Liu Y, Wu Y, Tang Y,
Zhang M, Liu S, Xiao L, Tao S, Xie M,
Dai M, Li M, Gui H and Wang Q (2022)
Patterns of Convergence and
Divergence Between Bipolar Disorder
Type I and Type II: Evidence From
Integrative Genomic Analyses.
Front. Cell Dev. Biol. 10:956265.
doi: 10.3389/fcell.2022.956265

¹Mental Health Center and Psychiatric Laboratory, State Key Laboratory of Biotherapy, West China Hospital of Sichuan University, Chengdu, China, ²West China Brain Research Center, West China Hospital of Sichuan University, Chengdu, China, ³Sichuan Clinical Medical Research Center for Mental Disorders, Chengdu, China, ⁴Center for Health Policy & Health Services Research, Henry Ford Health System, Detroit, MI, United States, ⁵Behavioral Health Services, Henry Ford Health System, Detroit, MI, United States

Aim: Genome-wide association studies (GWAS) analyses have revealed genetic evidence of bipolar disorder (BD), but little is known about the genetic structure of BD subtypes. We aimed to investigate the genetic overlap and distinction of bipolar type I (BD I) & type II (BD II) by conducting integrative post-GWAS analyses.

Methods: We utilized single nucleotide polymorphism (SNP)-level approaches to uncover correlated and distinct genetic loci. Transcriptome-wide association analyses (TWAS) were then approached to pinpoint functional genes expressed in specific brain tissues and blood. Next, we performed cross-phenotype analysis, including exploring the potential causal associations between two BD subtypes and lithium responses and comparing the difference in genetic structures among four different psychiatric traits.

Results: SNP-level evidence revealed three genomic loci, *SLC25A17*, *ZNF184*, and *RPL10AP3*, shared by BD I and II, and one locus (*MAD1L1*) and significant gene sets involved in calcium channel activity, neural and synapsed signals that distinguished two subtypes. TWAS data implicated different genes affecting BD I and II through expression in specific brain regions (nucleus accumbens for BD I). Cross-phenotype analyses indicated that BD I and II share continuous genetic structures with schizophrenia and major depressive disorder, which help fill the gaps left by the dichotomy of mental disorders.

Abbreviations: BD, Bipolar disorder; BDI, Bipolar disorder type I; BDII, Bipolar disorder type II; condFDR, Conditional false discovery rate; conjFDR, Conjunctive false discovery rate; eQTL, Expression quantitative trait locus; FUMA, Functional mapping and annotation of GWAS; GSMR, Generalized summary-data-based Mendelian randomization; GWAS, Genome-wide association study; HEIDI, Heterogeneity in dependent instruments; IVs, Instrumental variants; IVW, Inverse variance weighted; LD, Linkage disequilibrium; MAF, Minor allele frequency; MAGMA, Multi-marker analysis of genomic annotation; MDD, Major depressive disorder; MR-PRESSO, MR pleiotropy residual sum and outlier; NHGRI-EBI, National Human Genome Research Institute-European Bioinformatics Institute; OLS, Ordinary least squares; PGC, Psychiatric Genomics Consortium; pleioFDR, pleiotropy-informed conditional false discovery rate; RDoC, Research Domain Criteria; SCZ, Schizophrenia; SMR, Summary-data-based Mendelian randomization; SNP, Single nucleotide polymorphism; TWAS, Transcriptome-wide association analyses.

Conclusion: These combined evidences illustrate genetic convergence and divergence between BD I and II and provide an underlying biological and trans-diagnostic insight into major psychiatric disorders.

Keywords: bipolar disorder, genome-wide association studies, transcriptome-wide association analysis, Mendelian randomization, bipolar type I, bipolar type II

INTRODUCTION

Bipolar disorder (BD) is one of the most severe psychiatric disorders, characterized by mood state fluctuation. As one of the top causes of disability worldwide, BD affects more than 40 million people worldwide with a lifespan prevalence of 1%–4% (Merikangas et al., 2011; Huang et al., 2019), early-onset in adolescents, and elevated risk of suicide (GBD 2016 Disease and Injury Incidence and Prevalence Collaborators, 2018).

Population and molecular studies have proved evidence of the complex etiology of BD. Twin and family studies have estimated that the heritability of BD is over 70% (Edvardson et al., 2008; Bienvenu et al., 2011). GWAS have brought a deeper insight into BD (Stahl et al., 2019; Li et al., 2021) compared with previous population genetics studies (Bertelsen et al., 1977; Kieseppa et al., 2004). The largest-scale GWAS of BD was recently processed by the Psychiatric Genomic Consortium Bipolar Disorder Working Group (PGC BD) (Mullins et al., 2021), and 64 genome-wide significant loci were identified. However, it failed to display increasing single nucleotide polymorphism (SNP)-level heritability (h_{SNP}^2) of BD (Psychiatric 2011; Mullins et al., 2021).

BD can be categorized into several major subtypes: BD type I (BD I) and type II (BD II), cyclothymia, and other specified bipolar and related disorders, according to the Diagnostic and Statistical Manual Disorders, Fifth Edition (DSM-5). BD I requires manic episodes at least once despite depression states, and BD II is defined as more than one depressive and hypomanic state. The worldwide lifetime prevalence of BD I (0.4%–1.2%) (Bebbington and Ramana 1995; Merikangas et al., 2011; Huang et al., 2019) differs from BD II (0.1%–2.5%) (Bebbington and Ramana 1995; Merikangas et al., 2011; Huang et al., 2019). In addition, clinical presentations and severity vary in the two subtypes (Judd et al., 2008; Merikangas et al., 2011); however, their genetic differences remained unclear due to insufficient sample size or substandard clinical classification (Charney et al., 2017; Bipolar Disorder and Schizophrenia Working Group of the Psychiatric Genomics Consortium, 2018).

Under the dichotomic diagnostic system, BD is hard to be distinguished from schizophrenia (SCZ) and major depressive disorder (MDD). BD with psychotic symptoms or manic BD performs and behaves similarly to SCZ; and oppositely, depressive BD is always misdiagnosed as MDD, resulting in limited therapeutic effects. Additionally, second-generation antipsychotics play an important role in the treatment of BD, SCZ, and MDD, indicating potential shared biological mechanisms among these phenotypes. Linkage disequilibrium (LD) score analysis indicated that BD I is much more genetically correlated with SCZ, whereas the genetic correlation of BD II with MDD is higher (Mullins et al., 2021). These provide a new

perspective on the genetic correlation between BD I, BD II, SCZ, and MDD. Moreover, molecular genetic studies have uncovered overlapped risk factors between the genomic architecture of psychiatric disorders (Psychiatric 2011; Charney et al., 2017; Stahl et al., 2019; Mullins et al., 2021); however, current diagnostic systems failed to elucidate it clearly.

To better understand BD etiology and taxonomy, our study aimed to provide more evidence through post-GWAS analyses. Integrative Omics approaches were adopted to navigate functional genes expressed in the influenced brain regions. Additionally, we explored cross-phenotype genetic structure in adult psychiatric disorders. We are trying to enrich the Research Domain Criteria (RDoC) and re-evaluate and provide new evidence for the cross-disease diagnosis of mental disorders.

METHODS AND MATERIALS

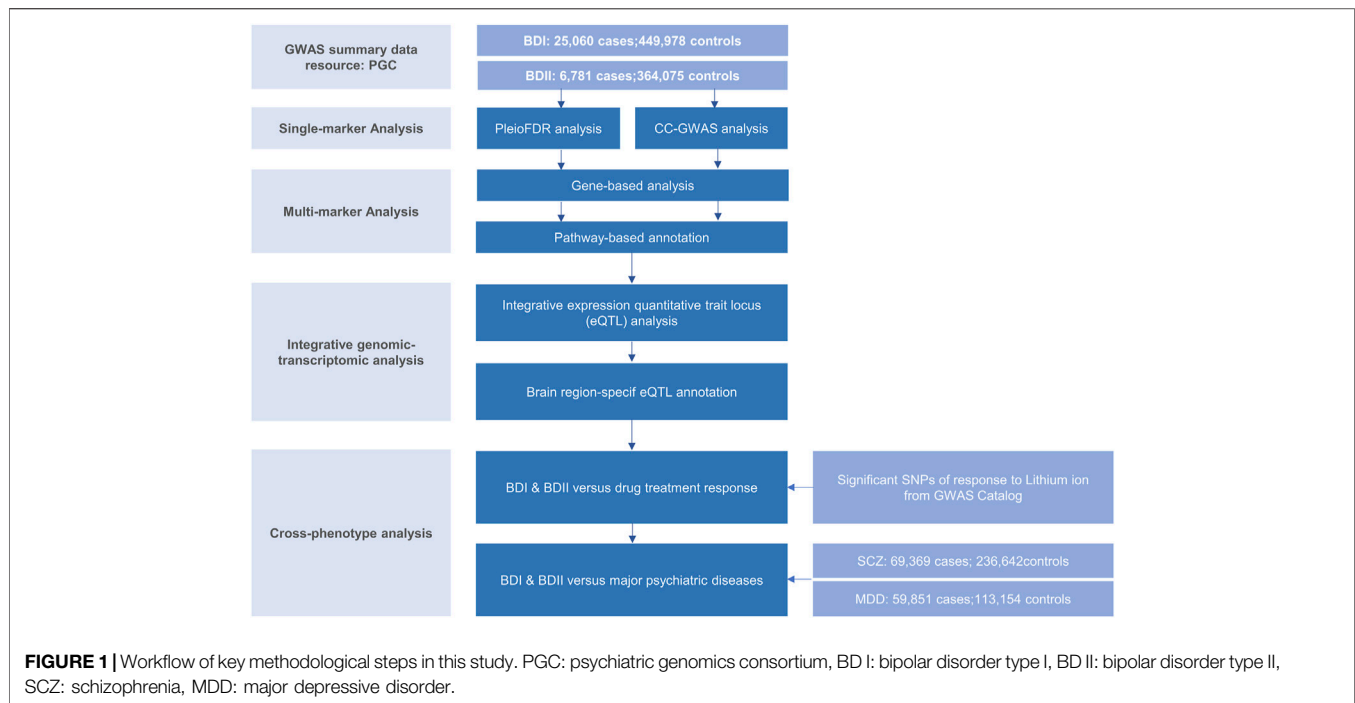
Study Design and GWAS Data Resources

The genome-wide association (GWA) meta-analysis summary data of BD I and II were from the PGC BD, containing BD I (25,060 cases and 449,978 controls) and BD II (6,781 cases and 364,075 controls), respectively. All participants were of European descent, and the diagnosis was explicitly based on international consensus criteria (DSM-IV, ICD-9, or ICD-10). Details on participant and cohort information and quality control can be accessed at Consortium (2020). Nominal significant instrumental variants (IVs) of response to lithium salt in bipolar disorder (Hou et al., 2016b; Song et al., 2016; International Consortium on Lithium et al., 2018) were downloaded from National Human Genome Research Institute–European Bioinformatics Institute (NHGRI-EBI) GWAS Catalog (Buniello et al., 2019) (<https://www.ebi.ac.uk/>). The latest and biggest GWA meta-analysis summary statistics for SCZ (53,386 cases and 77,258 controls) (Trubetskoy et al., 2022) and MDD except samples in the 23andMe dataset (59,851 cases and 113,154 controls) (Wray et al., 2018) were from PGC website. Non-rsID SNPs were converted using ANNOVA (Wang et al., 2010), and those without rsID were removed. Beta was computed by log (OR). The overall post-GWAS analysis pipeline is shown in **Figure 1**.

Single-Marker Analysis

PleioFDR Analysis

For genetic overlap, we used pleiotropy-informed conditional false discovery rate (pleioFDR) methods (Andreassen et al., 2013), including conditional FDR (condFDR), an extension of the standard FDR, and conjunctive FDR (conjFDR) analysis, defined in turn as the maximum of the two condFDR values. The pleioFDR provided a conservative estimate of the FDR associated



with both phenotypes and was applied to identify specific shared loci. Based on an empirical Bayesian statistical framework, this statistical framework increased statistical power in detecting SNPs that did not reach genome-wide significance. Independent significant SNPs were defined with $\text{condFDR} < 0.01$.

CC-GWAS Analysis

For genetic uniqueness, we applied the CC-GWAS method (Peyrot and Price, 2021). CC-GWAS perceives differences in minor allele frequencies (MAF) across two traits by analyzing case-control GWAS summary statistics for each other. It weighted the effect size using two methods, ordinary least squares (OLS) weights and exact weights. To avoid suspect null-null SNPs, SNPs with $p_{\text{OLS}} < 5 \times 10^{-8}$ were excluded. Then, those that failed to pass the required level of significance of CC-GWAS ($p_{\text{EXACT}} > 1 \times 10^{-4}$) were excluded to effectively control the type I error rate caused by suspect stress test SNPs.

Multi-Marker Analysis

Gene-Based Analysis

Independent genomic loci were mapped by shared and trait-specific SNPs from GWAS summary data of BD I (PGC), BD II (PGC), and CC-GWAS (this study) using ANNOVAR employed in functional mapping and annotation of GWAS [FUMA (Watanabe et al., 2017)] online platform (<https://fuma.ctglab.nl/>). Significant SNPs were first selected by LD $r^2 > 0.6$ within a 10 kb window. Second, we narrowed lead SNPs with LD $r^2 > 0.1$ with the same window. Genomic risk loci were identified by merging lead SNPs if they were closer than 250 kb, thus, containing multiple lead SNPs. The European samples retrieved from the 1,000 Genomes Project phase 3 (1000G EUR) (Genomes Project et al., 2015) were used to calculate

LD. To further define independent genomic loci diverged in BD I and II, we utilized MAGMA v1.6 implemented in FUMA (Watanabe et al., 2017). Gene locations and boundaries were from the NCBI Build GRCh37 assembly.

Pathway-Based Annotation

Functional annotation was performed to uncover the likely biological mechanisms linking and distinguishing BD I and II. Enrichment for the genes mapped to all (candidate, genes nearest to lead and lead) SNPs in the identified shared loci was evaluated by the Molecular Signatures Database (MsigDB) via a hypergeometric test implemented in FUMA (Watanabe et al., 2017). Genes without unique Entrez ID or pathways containing less than two genes were removed. The results were adjusted by Benjamini–Hochberg false discovery rate (BH FDR) of 0.05.

Integrative Genomic-Transcriptomic Analysis

Integrative Expression Quantitative Trait Locus Analysis

To detect important but non-genome-wide significant sites, we first used summary-data-based Mendelian randomization (SMR) (Zhu et al., 2016) to estimate loci with strong evidence of causal effects of blood [eQTLGen Consortium (Vosa et al., 2021), 31,684 whole blood samples] and a large-scaled meta-data for brain resources [GTEx Consortium et al., 2017; Qi et al., 2018), CMC (Fromer et al., 2016) and ROSMAP (Ng et al., 2017), 1194 estimated effective sample] via gene expression in BD I and BD II risk. SMR analysis was limited to significant cis eQTL ($p_{\text{eQTL}} < 5 \times 10^{-8}$), with MAF > 0.20 , and passing heterogeneity in dependent instruments outlier (HEIDI-outlier) test ($p \geq 0.01$) due

to its conservativeness (Zhu et al., 2016; Zhu et al., 2018). Significant loci were filtered after multiple testing and within 1 MB distance from each probe.

Brain Region-specific eQTL Annotation

Likewise, we conducted brain-specific analyses using e-MAGMA (Gerring et al., 2021) and FUSION (Gusev et al., 2016), transcriptome-wide association studies (TWAS) to map genes based on precomputed tissue-specific eQTL statistics leveraging 13 brain tissues of GTEx v8 (Consortium 2020) and test whether SNPs influencing gene expression are associated with BD I and II. The 1000G EUR were used as a reference dataset to account for LD between SNPs. FDR correction was also applied to control the multiple tests performed on the numbers of genes in each process.

Cross-Phenotype Analysis

BD I and II Versus Lithium Treatment Responses

We then investigate bi-directional causal relationships between BD I and II and lithium salt response using the “two-sample MR” (Version 0.5.3) and “Mendelian randomization” (Version 0.5.1) R packages. We selected independent SNPs with p -value $< 5 \times 10^{-6}$ and harmonized exposure and outcome data by removing SNPs with large MAF differences or different reference alleles. For two-sample MR analysis, we used inverse variance weighted (IVW), weighted median, and MR-Egger as primary methods. MR-Egger intercept test and MR pleiotropy residual sum and outlier (MR-PRESSO) test (Verbanck et al., 2018) were used to evaluate potential horizontal pleiotropy.

BD I and II Versus Major Psychiatric Diseases

To explore genetic causal associations between BD I, BD II, SCZ, and MDD, we conducted a bi-directional MR analysis between each pair of the heritable variables using generalized summary-data-based Mendelian randomization (GSMR) (Yang et al., 2011). The estimated effect size and its standard error from multiple instrumental variants were associated with the exposure trait at a genome-wide significant level ($p < 5 \times 10^{-8}$). Attribute to insufficient instruments included in analyses, a p -value threshold of 5×10^{-5} was used. In GSMR, genetic instruments with pleiotropic effects are detected and eliminated by the HEIDI-outlier procedure, the same with SMR. We used default options in GSMR with HEIDI testing for the detection of instrumental outliers ($LD r^2 < 0.05$, and at least 10 SNPs were required).

Finally, MiXeR (Frei et al., 2019; Holland et al., 2020) was applied as a polygenic overlap analysis. Univariate models estimated polygenicity (estimated number of variants) and discoverability (the average magnitude of additive genetic associations across variants) of each phenotype. Bivariate Gaussian mixture models were also applied to estimate the number of variants influencing each trait that explained 90% of h_{SNP}^2 and their overlap with each other. MiXeR calculated a Dice coefficient, a ratio of shared variants to the total number of variants, to evaluate the polygenic overlap. In line with the Akaike

information criterion (AIC), MiXeR evaluated model fitting based on the current power of input summary statistics.

RESULTS

Genetic Overlaps Between Bipolar Type I and II

For signals shared by BD I and BD II, the conjFDR analysis identified 74 significant SNPs ($p < 0.01$) that are mapped to three genomic loci (Table 1; Supplementary Table S1; Figure 2A): *ZNF184* (zinc finger protein 184), mapped by *rs67240003* (ALT:T, REF:G, MAF:0.044, $p_{\text{FDR}} = 5.26 \times 10^{-3}$) and *RPL10AP3* (ribosomal protein L10a pseudogene 3), mapped by *rs6990255* (ALT:T,REF:C, MAF:0.042, $p_{\text{FDR}} = 7.54 \times 10^{-3}$). The third one is consistent with the newest BD GWAS: *SLC25A17* (solute carrier family 25 member 17), mapped by *rs5758064* (ALT:C, REF:T, MAF:0.49, $p_{\text{FDR}} = 7.47 \times 10^{-3}$). The shared genomic loci, candidate independent SNPs, allelic association, and novelty for BD are summarized in Supplementary Table S1. The stratified conditional quantile–quantile (Q–Q) plots showed SNP enrichment for BD I condition on association with BD II and vice versa (Supplementary Figure S1), suggesting the existence of polygenic overlap.

Genetic Distinction of Bipolar Type I and II

CC-GWAS analysis was applied to the publicly available summary statistics for BD I and BD II. The only one CC-GWAS BD I versus BD II SNP was *rs12154473* (ALT:G, REF:A, MAF: 0.56), mapping *MAD1L1* (mitotic arrest deficient 1 like 1, $p_{\text{OLS}} = 2.83 \times 10^{-8}$; $p_{\text{EXACT}} = 6.07 \times 10^{-5}$; Table 2; Supplementary Tables S2 and S3; Supplementary Figure S2). The Manhattan plot of CC-GWAS results is shown in Figure 2B.

In the gene-based analysis, CC-GWAS displayed nine significant genes between BD I and II after multiple testing ($p < 0.05/18,626 = 2.68 \times 10^{-6}$). A total of 129 genes were significant for BD I ($p < 0.05/18,847 = 2.65 \times 10^{-6}$). *CACNA1C* (gene calcium voltage-gated channel subunit alpha1 C, $p = 2.80 \times 10^{-11}$), *MAD1L1* ($p = 7.56 \times 10^{-11}$), and *TMEM258* (transmembrane protein 258, $p = 9.48 \times 10^{-11}$), were the top three genes of BD I. The only significant gene of BD II ($p < 0.05/18,830 = 2.66 \times 10^{-6}$) was slit guidance ligand 3 (*SLIT3*, $p = 7.92 \times 10^{-9}$) (Supplementary Tables S4 and S12).

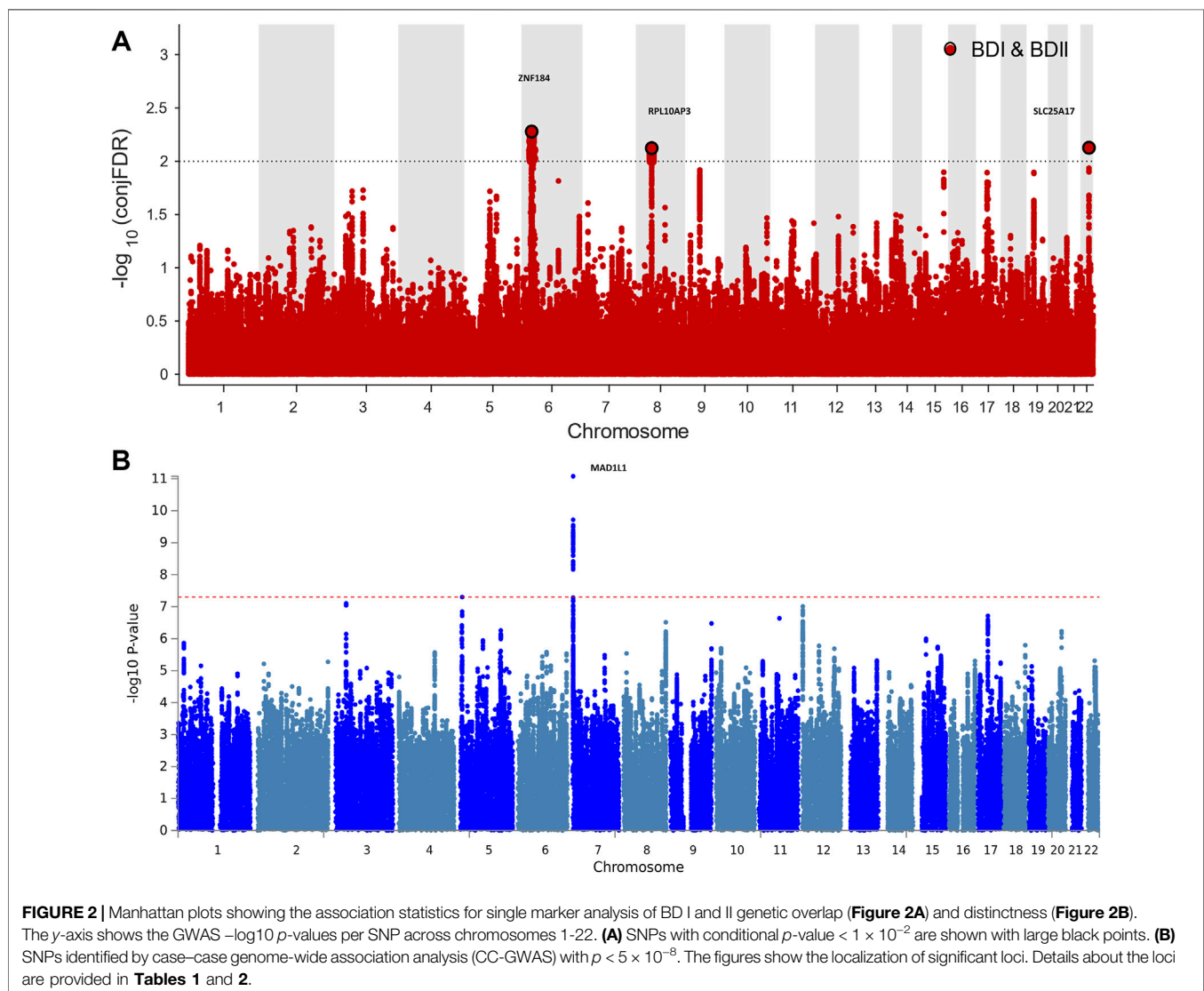
In the pathway analysis, 11, 6 and 1 pathways were significantly enriched by the genes through MAGMA analysis for BD I, BD II, and CC-GWAS summary statistics ($p_{\text{Bonferroni}} < 0.05$), respectively. As for BD I, the “neuron part”, “somatodendritic compartment”, “high voltage-gated calcium channel activity”, and “voltage-gated calcium channel activity involved in cardiac muscle cell action potential” were gene ontology pathways verified by CC-GWAS and BD I. As for BD II, the only significant pathway was the “Hirsch cellular transformation signature up” ($p = 9.84 \times 10^{-5}$) (Supplementary Table S5).

TABLE 1 | Conjunction FDR; pleiotropic loci in BD type I (BD I) and BD type II (BD II) (BD I & BD II) at conjFDR <0.01.

Locus	CHR	SNP	Position	Neighbor gene	A1	A2	ConjFDR BD I&BD II	Zscore_BD I	Zscore_BD II
1	6p22.1	rs67240003	27443202	ZNF184	T	G	0.00526327	-4.74249	-4.3186
2	8p12	rs6990255	34126948	RPL10AP3	T	C	0.0075384	4.350196	4.21441
^a 3	22q13.2	rs5758064	41153879	SLC25A17	C	T	0.00747462	-4.74249	-4.21714

^aSame locus identified in previous BD genome-wide association studies.

Independent complex or single gene loci ($r^2 < 0.2$) with SNP(s) with a conjunctive FDR (conjFDR) < 0.05 in BD I and BD II. All SNPs with a conjFDR value of 0.05 (bidirectional association) and association with BD I & BD II are listed and sorted in each LD block. We defined the most significant SNP in each LD block based on the minimum conjFDR, Chromosome (CHR), minor allele (A1), and major allele (A2), Z-scores for each pleiotropic locus are provided. All data were first corrected for genomic inflation. Locus name is based on exonic lead SNPs. Remaining locus name is based on the nearest gene and does not refer to any inferred biological function. Details are in **Supplementary Table S1**.



TWAS Analyses in Blood and Brain Regions

In the SMR process, 11 in brain ($p_{SMR} < 6.61 \times 10^{-6}$) and 49 in blood ($p_{SMR} < 3.19 \times 10^{-6}$) putative BD I-associated genes were identified after multiple testing corrections and a heterogeneity

test. The top loci were *NMB* (neuromedin B) and *FADS1* (fatty acid desaturase 1) for BD I in blood and brain, respectively (**Supplementary Figure S3**). We did not observe significant results for BD II after multiple testing. The related genomic

TABLE 2 | Distinguished loci between BD I and BD II by CC-GWAS results at OLS $<5 \times 10^{-8}$ and EXACT $<1 \times 10^{-4}$.

Disorders	SNP	CHR	Position	Locus	A1B1(OLS)			A1B1 (Exact)		
					Beta	Se	p	Beta	Se	p
BD I & BD II	rs12154473	7	1982181	MAD1L1	0.0117	0.00211	2.83E-08	0.0435	0.0108	6.07E-05

For the CC-GWAS-specific locus, the lead CC-GWAS SNP and its chromosome, physical position, locus name, respective case-control effect sizes and p-values and the CC-GWAS OLS and exact case-case effect size, standard error(se), and p-value. Details are in **Supplementary Table S3**.

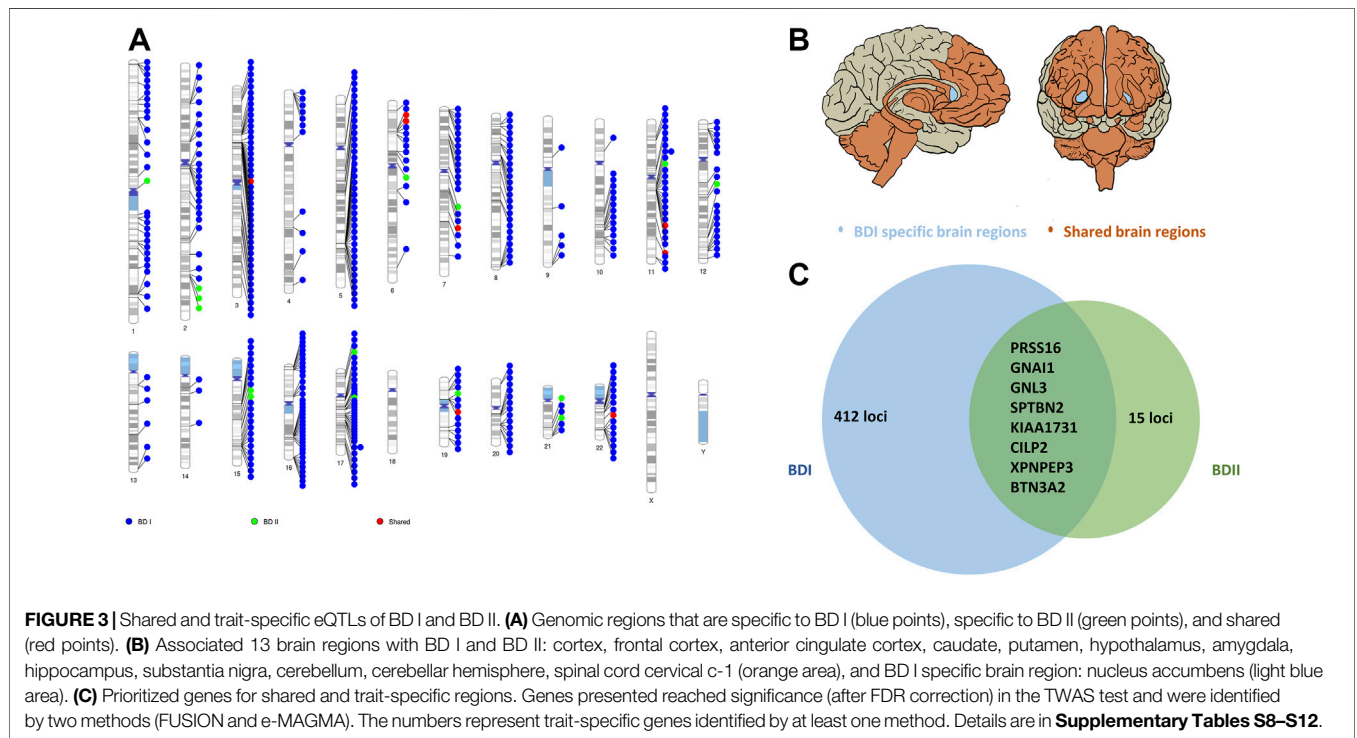


FIGURE 3 | Shared and trait-specific eQTLs of BD I and BD II. **(A)** Genomic regions that are specific to BD I (blue points), specific to BD II (green points), and shared (red points). **(B)** Associated 13 brain regions with BD I and BD II: cortex, frontal cortex, anterior cingulate cortex, caudate, putamen, hypothalamus, amygdala, hippocampus, substantia nigra, cerebellum, cerebellar hemisphere, spinal cord cervical c-1 (orange area), and BD I specific brain region: nucleus accumbens (light blue area). **(C)** Prioritized genes for shared and trait-specific regions. Genes presented reached significance (after FDR correction) in the TWAS test and were identified by two methods (FUSION and e-MAGMA). The numbers represent trait-specific genes identified by at least one method. Details are in **Supplementary Tables S8–S12**.

loci, candidate SNPs, and allelic association for BD I are summarized in **Supplementary Tables S6 and S7**.

In the brain region-specific TWAS analysis, e-MAGMA identified 148 loci ($p_{\text{FDR}} < 0.05$) of BD I. *FADS1* ($p_{\text{FDR}} = 1.87 \times 10^{-7}$), *PLEC* (plectin, $p_{\text{FDR}} = 3.10 \times 10^{-7}$), and *ITIH4* (inter-alpha-trypsin inhibitor heavy chain 4, $p_{\text{FDR}} = 3.10 \times 10^{-7}$) were the top ones. These genes encompassed three brain regions, including the hypothalamus, amygdala, and cerebellum (**Supplementary Table S8**). Similarly, FUSION indicated 336 genes ($p_{\text{FDR}} < 0.05$, 9 hits of previous GWAS of BD achieved nominal significance) of BD I (**Supplementary Table S9**) among all the 13 brain regions.

As for BD II, two genes showed significant association with BD II by e-MAGMA after correction for multiple testing: *GNAI1* (G protein subunit alpha I 1 on chromosome 7, $p_{\text{FDR}} = 2.64 \times 10^{-7}$) and *PRSS16* (serine protease 16 on chromosome 6, $p_{\text{FDR}} = 1.40 \times 10^{-5}$). Both were over-expressed in the cerebellum (**Supplementary Table S10**). A total of 21 genes were significant by FUSION after multiple tests among brain regions without nucleus accumbens (NAc) (**Supplementary Table S11**). The top hit was AC005932.1 ($p_{\text{FDR}} = 2.07 \times$

10^{-4}), a novel nominal significant gene for BD II (**Figure 3; Supplementary Figures S4 and S5; Supplementary Table S12**).

Correlations Between BD I and II and Response to Lithium

We selected 16 SNPs from the GWAS catalog mapped to “response to lithium ion”. After selection and harmonization, ten SNPs were included in the final bi-directional Mendelian randomization between BD I and response to lithium ion. The estimate effect was positive and statistically significant in weighted median [beta = 1.89; standard error (SE) = 0.426; $p = 9.57 \times 10^{-6}$] but not significant in IVW (beta = 2.22; SE = 1.66; $p = 0.180$). Nine SNPs were included in the analysis between BD II and response to lithium ion, showing negative results in IVW (beta = 3.27; SE = 2.28; $p = 0.153$) or weighted median (beta = 3.29; SE = 2.21; $p = 0.136$), even estimates were higher compared to BD I. Based on different hypotheses of whether there is a dose-response relationship between the shared genetic instruments of exposure and outcome with an intercept versus whether omitting each genetic variant from analysis differs from

the original model, MR-Egger and MRR-PRESSO displayed similar results for the heterogeneity test. The relationship between BD I and response to lithium failed to pass MR-Egger intercept analysis (MR-Egger intercept = 0.39; $p = 0.01$) or MR-PRESSO (p_{Global} test < 0.001), indicating the possible existence of horizontal pleiotropy (Supplementary Table S13; Supplementary Figure S6).

Genetic Overlaps Between BD I and II and Other Traits

GSMR analyses provided evidence that genetically SCZ provided a 0.50-fold and 0.32-fold causality increase in BD I and BD II, respectively. Inversely, MDD increased causality with BD I and BD II by 0.23-fold and 1.11-fold, respectively. In the other direction, BD I provided 0.32-fold causal effect on SCZ (beta = 0.32, SE = 0.019, $p = 3.70 \times 10^{-62}$), comparing with less effect on MDD (beta = 0.043, SE = 0.018, $p = 1.36 \times 10^{-2}$). Since the number of SNPs ought to be over 10, p -value threshold was set to be 5×10^{-5} when BD II was computed into clumping as exposure trait. The causal relationship between BD II and SCZ (beta = 0.073, SE = 0.008, $p = 1.12 \times 10^{-21}$) were very close to BD II and MDD (beta = 0.050, SE = 0.008, $p = 7.71 \times 10^{-11}$). BD I (beta = 0.505, SE = 0.044, $p = 5.18 \times 10^{-31}$) and BD II (beta = 0.173, SE = 0.012, $p = 2.78 \times 10^{-50}$) were presented with causality with each other (Supplementary Table S14).

MiXeR estimated that approximately 7.88 k (SE = 0.26 k) variants influence BD I, which was comparable to the case of SCZ (9.82 k; SE = 0.22 k), lower than that for major depression (21.6 k, SE = 2.64 k) and 19.82 k (SE = 21.12 k) variants influenced BD II. The deficiency of sample size may explain the odd statistics in BD II. MiXeR also revealed a higher polygenicity in BD II and MDD than in BD I and SCZ. In BD I and BD II, 7.47 k (SE = 0.29 k) and 7.47 k (SE = 1.73 k) variants were associated with SCZ; 5.44 k (SE = 0.59 k) and 13.23 k (SE = 5.91 k) variants were associated with MDD, respectively. Consistent with LD score regression, MiXeR showed that BD I enjoyed higher genetic overlap with SCZ ($rg = 0.70$) than with MDD ($rg = 0.39$), and oppositely, BD II possessed higher genetic overlap with MDD ($rg = 0.68$) than with SCZ ($rg = 0.61$) (Supplementary Figure S7; Supplementary Table S15).

DISCUSSION

The present study is the first comprehensive post-GWAS analysis of BD I and II using the largest BD dataset (Mullins et al., 2021). Different from the original study that aimed to identify novel genes and drug targets using overall BD as the primary phenotype (Mullins et al., 2021), our integrative genomic analyses directly answered the following question: what are the shared and distinct genetic components of BD subtypes? In this study, we corroborated and expanded evidence from previous clinical and genetic studies that there did exist a partially shared genetic basis between BD I and II and provided further insights into their genetic

divergence. When compared to other earlier studies (Schizophrenia Working Group of the Psychiatric Genomics Consortium, 2014; Charney et al., 2017; Huckins et al., 2017; Mullins et al., 2021) on the same research question (Supplementary Table S16), our study is innovative from different aspects: 1) largest sample size for BD I and II; 2) more systematic statistical genetics analyses within BD itself and across major psychiatric disorders; and 3) new biological explanation to the distinction of BD subtypes.

For genetic convergence, all of these loci identified shared by BD I and II were previously reported to be associated with bipolar disorder, depression, ADHD, autism spectrum disorder, or schizophrenia (Cross-Disorder Group of the Psychiatric Genomics 2013; Autism Spectrum Disorders Working Group of The Psychiatric Genomics Consortium, 2017; Ferguson et al., 2018; Wu et al., 2020), underpinning their contribution to mental disorder risk. *ZNF184* has been reported to be likely associated with subcortical volume (van der Meer et al., 2020), indicating a potential biological function in BD neurodevelopment (Valli et al., 2019). Research for links between mental and physical disorders is also proposed (Van Veldhoven 2010; Liu et al., 2017; Wain et al., 2017; Ferguson et al., 2018).

For genetic divergence, notably, *MAD1L1*, which was reported to be genome-wide significant in the two previous BD GWAS (Hou et al., 2016a; Ikeda et al., 2018) in Asian samples, nominally distinguished BD I and II in this study. This gene contributes to cell cycle control through the regulation of mitosis and has been shown to have a pleiotropic effect on psychosis and BD (Ruderfer et al., 2014; Schizophrenia Working Group of the Psychiatric Genomics Consortium, 2014; Charney et al., 2017). Moreover, *MRM1* (mitochondrial rRNA methyltransferase 1), *ZNHIT3* (zinc finger HIT-type containing 3), *DHRS11* (dehydrogenase/reductase 11), and *GGNBP2* (gametogenetin binding protein 2) were first reported as significant in the gene-based test. *SLIT3* was identified to be BD II-specific by gene-based analysis. *SLIT3* was reported to increase schizophrenia susceptibility (Shi et al., 2004). Population difference (EUR vs. Han) and phenotype heterogeneity across countries may explain this interesting observation. *SLIT3* has also been shown to play a critical role in the formation and maintenance of the nervous system (Vargesson et al., 2001), indicating a generally shared genetic association among psychiatric disorders. However, it was not discovered to be associated with BD I, which indicated *SLIT3* could be a marker to distinguish BD II.

Enriched gene-sets of BD I were involved in neuronal and postsynaptic compartments as well as calcium channel activity, triggering presynaptic signaling, which reconfirmed cross-phenotype correlation across BD, SCZ, ASD, and cognitive deficiency (Pescosolido et al., 2013; Cupertino et al., 2016; Forstner et al., 2017; Bipolar, Schizophrenia Working Group of the Psychiatric Genomics Consortium. Electronic address et al., 2018). These pathway processes indicate that BD I primarily represents BD biological features and point to deeper research into common biological pathogenesis among mental disorders. In comparison, the BD II-specific pathway effects are generally linked with cancer and inflammatory and metabolic diseases (Hirsch et al., 2010), suggesting that larger

cohorts are required to provide a mechanistic prompt for further research on BD II.

Interestingly, from the integrative Omics analysis, we found that *FADS1*, one of the three top eQTL-associated loci shared by both brain and blood, is presented with opposite directions of effect on gene expression in the two different tissues. This observation also suggests that *FADS1* possibly plays a role in the tissue-specific gene regulation of BD I. The possible reason was that *FADS1* is strongly associated with blood cell and lipid and glucose metabolite (Sabatti et al., 2009; Tintle et al., 2015; Tabassum et al., 2019; Chen et al., 2020), and is, thus, highly expressed in blood. Brain region-specific eQTL analysis yielded 15 genes specific for BD II. These eQTLs provide promising candidate genes for subsequent functional experiments, especially *NOS2* (Nitric oxide synthase 2) and *CASP8* (Caspase-8), participate in drug metabolism (Whirl-Carrillo et al., 2012), despite no correlation to psychosis was yet found. While several of these genes are implicated by genome-wide significant loci, many of them are not the closest gene to the index SNP, highlighting the value of probing underlying molecular mechanisms to prioritize the most likely causal genes in each corresponding locus and moving from genes to functional mechanism. However, most genes are not overlapped among gene-based and TWAS analyses due to different hypotheses on how SNPs affect gene expression (**Supplementary Table S12**).

In addition, BD I and BD II significantly differ in biosignatures as revealed by gene expression differentiation in functional brain regions and drug response in this study. Gene expression differentiation in NAc might represent an endophenotype of BD I addressing dysfunction of brain circuits. By regulating dopamine release and the midbrain dopamine system, NAc contributes to the onset of SCZ (Eastwood et al., 2005; Kozlovsky et al., 2006), especially for delusion and hallucination. It is also a contributor to the pathophysiology of BD, as shown in a postmortem brain analysis (Kunii et al., 2019). Even though we did not find direct causal relationships between BD I, BD II, and lithium response, there indeed exists a linkage with lithium response following the guidelines (Yatham et al., 2018): lithium was first-line to BD I, but not to BD II. Lithium is more effective for patients sharing etiological homogeneity; based on longitudinal stability and familial clustering, lithium response has been suggested to define a distinct genetically based BD nosology (International Consortium on Lithium et al., 2018). Therefore, biological indicators such as treatment response, clinical prognosis, and progression of BD I and BD II should be included in genetic analysis to enable improved precise clinical decision-making. It is also the RDoC standard that a combination of neuroscience research will be helpful for future genetic research, even altering clinical management (Insel et al., 2010).

Another interesting finding of this study is that, despite bidirectional causal associations from GSMR and mixed directional overlap from MiXeR, whether the causal relationships driven by other covariates (Yang et al., 2011) is unclear, and meanwhile, MiXeR analysis prompted a high

clinical heterogeneity for BD I-BD II pair, when compared with BD I-SCZ or BD II-MDD pair. One explanation could be that BD I and II may help fill the gap across mental disorders by revealing transdiagnostic biotypes (Cross-Disorder Group of the Psychiatric Genomics Consortium. Electronic address and Cross-Disorder Group of the Psychiatric Genomics 2019). Insights into such continuous genetic structure, rather than completely independent disease entities, may greatly contribute to clinical decision-making in prophylaxis or management of the disorder. The findings of this study will also trigger larger studies on BD II and other biotypes, such as psychosis bipolar disorder and cyclothymia, because current BD GWAS mainly reflected the genetic characteristics of BD I, the majority of overall BD cases. Although a large sample size of GWAS is always important in nowadays genomic studies, the statistical power will be greatly reduced when there is nonnegligible clinical heterogeneity caused by the classification system within disease phenotype (Mitchell et al., 2021). Therefore, as RDoC emphasized, large-scale transdiagnostic investigations are urgently needed to untangle whether impairment or symptoms can be regarded as subtype-specific, and so do multi-omics analysis (Cuthbert 2020).

One of the potential limitations of our study is that the population imbalance of BD I and BD II GWAS may be susceptible to reduced power; however, it did not lead to inflated type I error in our post-GWAS analysis. Another limitation is that we failed to achieve individual genotypes, leading to the incompleteness of some important analyses, such as polygenic risk score (PRS) calculation. Finally, our study only obtained GWAS summary statistics of BD I and BD II, lacking data from other BD subtypes. Once other characteristics of clinical subtypes (psychotic symptoms) are available in PGC or other groups, further refined genetic architecture for BD should be explored by a more systematic comparison in future.

In summary, genetic evidence deepens our understanding of the biological etiology of BD and prioritizes a set of candidate genes distinguishing BD I and II for functional follow-up experiments and indicates a spectrum connecting psychiatric disorders, which enable better ways to optimize nosology and precise treatments in psychiatry.

DATA AVAILABILITY STATEMENT

The data that support the findings of this study were derived from the following resources available in the public domain: <https://www.med.unc.edu/pgc/download-results/>.

AUTHOR CONTRIBUTIONS

HG and QW have full access to all of the data in the study and take responsibility for the integrity of the data and the accuracy of the data analysis. YH, YL, and YW are joint first authors, and HG and QW are corresponding authors. HG and QW designed this

work. YH, YL, YW, YT, SL, LX, and MZ acquired and analyzed GWAS summary data and interpreted the results of the data analyses. YH, YL, and YW drafted this manuscript. ST, MX, MD, ML, HG, and QW substantively revised the manuscript. All authors read and approved the final manuscript.

FUNDING

This study was financially supported by the National Nature Science Foundation of China (Grant NO. 81771446 to QW, NO. 82171499 to QW and NO. 82071524 to ML), Science and Technology Project of Sichuan Province (2021YJ0238 to ML and 2022YFS0183) and Post-Doctoral Research Project, West China Hospital, Sichuan University (2021HXBH034). HG is supported by Mentored Scientist Grant in Henry Ford Hospital. This manuscript has been preprinted online:

REFERENCES

- American Psychiatric Association (2013). *Diagnostic and Statistical Manual of Mental Disorders*. 5th edn. Washington, DC: American Psychiatric Association Publishing.
- Andreassen, O. A., Thompson, W. K., Schork, A. J., Ripke, S., Mattingsdal, M., Kelsoe, J. R., et al. (2013). Improved Detection of Common Variants Associated with Schizophrenia and Bipolar Disorder Using Pleiotropy-Informed Conditional False Discovery Rate. *PLoS Genet.* 9 (4), e1003455. doi:10.1371/journal.pgen.1003455
- Autism Spectrum Disorders Working Group of The Psychiatric Genomics Consortium (2017). Meta-analysis of GWAS of over 16,000 Individuals with Autism Spectrum Disorder Highlights a Novel Locus at 10q24.32 and a Significant Overlap with Schizophrenia. *Mol. Autism* 8, 21. doi:10.1186/s13229-017-0137-9
- Bebbington, P., and Ramana, R. (1995). The Epidemiology of Bipolar Affective Disorder. *Soc. Psychiatry Psychiatr. Epidemiol.* 30 (6), 279–292. doi:10.1007/bf00805795
- Bertelsen, A., Hauge, B. M., and Hauge, M. (1977). A Danish Twin Study of Manic-Depressive Disorders. *Br. J. Psychiatry* 130, 330–351. doi:10.1192/bjp.130.4.330
- Bienvendu, O. J., Kendler, D. S. K. S., and Kendler, K. S. (2011). Psychiatric 'diseases' versus Behavioral Disorders and Degree of Genetic Influence. *Psychol. Med.* 41 (1), 33–40. doi:10.1017/s003329171000084x
- Bipolar Disorder and Schizophrenia Working Group of the Psychiatric Genomics Consortium (2018). Genomic Dissection of Bipolar Disorder and Schizophrenia, Including 28 Subphenotypes. *Cell* 173 (7), 1705–1715. e1716.
- Buniello, A., MacArthur, J. A. L., Cerezo, M., Harris, L. W., Hayhurst, J., Malangone, C., et al. (2019). The NHGRI-EBI GWAS Catalog of Published Genome-wide Association Studies, Targeted Arrays and Summary Statistics 2019. *Nucleic Acids Res.* 47 (D1), D1005–D1012. doi:10.1093/nar/gky1120
- Charney, A. W., Ruderfer, D. M., Stahl, E. A., Moran, J. L., Chambert, K., Belliveau, R. A., et al. (2017). Evidence for Genetic Heterogeneity between Clinical Subtypes of Bipolar Disorder. *Transl. Psychiatry* 7 (1), e993. doi:10.1038/tp.2016.242
- Chen, H. Y., Cairns, B. J., Small, A. M., Burr, H. A., Ambikumar, A., Martinsson, A., et al. (2020). Association of FADS1/2 Locus Variants and Polyunsaturated Fatty Acids with Aortic Stenosis. *JAMA Cardiol.* 5 (6), 694–702. doi:10.1001/jamacardio.2020.0246
- Consortium, G. T. (2020). The GTEx Consortium Atlas of Genetic Regulatory Effects across Human Tissues. *Science* 369 (6509), 1318–1330. doi:10.1126/science.aaz1776
- Cross-Disorder Group of the Psychiatric Genomics, C. (2013). Identification of Risk Loci with Shared Effects on Five Major Psychiatric Disorders: a Genome-wide Analysis. *Lancet* 381 (9875), 1371–1379. doi:10.1016/S0140-6736(12)62129-1

medRxiv 2021.12.15 .21267813; doi: <https://doi.org/10.1101/2021.12.15.21267813>.

ACKNOWLEDGMENTS

The authors acknowledged Psychiatric Genomics Consortium (PGC) for uploading the newest GWAS summary statistics and participants who contributed to the studies. The authors also acknowledged Hu Ying for his help with visualization.

SUPPLEMENTARY MATERIAL

The Supplementary Material for this article can be found online at: <https://www.frontiersin.org/articles/10.3389/fcell.2022.956265/full#supplementary-material>

- Cross-Disorder Group of the Psychiatric Genomics Consortium. Electronic address, and Cross-Disorder Group of the Psychiatric Genomics (2019). Genomic Relationships, Novel Loci, and Pleiotropic Mechanisms across Eight Psychiatric Disorders. *Cell* 179 (7), 1469–1482. e1411.
- Cupertino, R. B., Kappel, D. B., Bandeira, C. E., Schuch, J. B., da Silva, B. S., Müller, D., et al. (2016). SNARE Complex in Developmental Psychiatry: Neurotransmitter Exocytosis and beyond. *J. Neural Transm.* 123 (8), 867–883. doi:10.1007/s00702-016-1514-9
- Cuthbert, B. N. (2020). The Role of RDoC in Future Classification of Mental Disorders. *Dialogues Clin. Neurosci.* 22 (1), 81–85. doi:10.31887/dcn.2020.22.1/cuthbert
- Eastwood, S. L., Harrison, P. W. P. J., and Harrison, P. J. (2005). Decreased Hippocampal Expression of the Susceptibility Gene PPP3CC and Other Calcineurin Subunits in Schizophrenia. *Biol. Psychiatry* 57 (7), 702–710. doi:10.1016/j.biopsych.2004.12.029
- Edvardsen, J., Torgersen, S., Roysamb, E., Lygren, S., Skre, I., Øien, S. P. A., et al. (2008). Heritability of Bipolar Spectrum Disorders. Unity or Heterogeneity? *J. Affect. Disord.* 106 (3), 229–240. doi:10.1016/j.jad.2007.07.001
- Ferguson, A., Lyall, L. M., Ward, J., Strawbridge, R. J., Cullen, B., Graham, N., et al. (2018). Genome-Wide Association Study of Circadian Rhythmicity in 71,500 UK Biobank Participants and Polygenic Association with Mood Instability. *EBioMedicine* 35, 279–287. doi:10.1016/j.ebiom.2018.08.004
- Forstner, A. J., Hecker, J., Hofmann, A., Maaser, A., Reinbold, C. S., Mühleisen, T. W., et al. (2017). Identification of Shared Risk Loci and Pathways for Bipolar Disorder and Schizophrenia. *PLoS One* 12 (2), e0171595. doi:10.1371/journal.pone.0171595
- Frei, O., Holland, D., Smeland, O. B., Shadrin, A. A., Fan, C. C., Maeland, S., et al. (2019). Bivariate Causal Mixture Model Quantifies Polygenic Overlap between Complex Traits beyond Genetic Correlation. *Nat. Commun.* 10 (1), 2417. doi:10.1038/s41467-019-10310-0
- Fromer, M., Roussos, P., Sieberts, S. K., Johnson, J. S., Kavanagh, D. H., Perumal, T. M., et al. (2016). Gene Expression Elucidates Functional Impact of Polygenic Risk for Schizophrenia. *Nat. Neurosci.* 19 (11), 1442–1453. doi:10.1038/nn.4399
- GTEx Consortium; Laboratory, Data Analysis & Coordinating Center (LDACC)-; Analysis Working Group; Statistical Methods groups; -; Analysis Working Group; Enhancing GTEx (eGTEx) groupsFund, N. I. H. C., Genome, I., Visualization, E. B. I., Genome Browser Data, I., Lead, a., Laboratory, D. A., et al. S. C. Visualization-Uscs Genomics Institute (2017). Genetic Effects on Gene Expression across Human Tissues. *Nature*, 550, 204–213. doi:10.1038/nature24277
- GBD 2016 Disease and Injury Incidence and Prevalence Collaborators (2018). Global, Regional, and National Incidence, Prevalence, and Years Lived with Disability for 354 Diseases and Injuries for 195 Countries and Territories, 1990–2017: a Systematic Analysis for the Global Burden of Disease Study 2017. *Lancet* 392 (10159), 1789–1858.

- Genomes Project, C., Auton, A., Brooks, L. D., Durbin, R. M., Garrison, E. P., Kang, H. M., et al. (2015). A Global Reference for Human Genetic Variation. *Nature* 526 (7571), 68–74. doi:10.1038/nature15393
- Gerring, Z. F., Mina-Vargas, A., Gamazon, E. R., and Derks, E. M. (2021). E-MAGMA: an eQTL-Informed Method to Identify Risk Genes Using Genome-wide Association Study Summary Statistics. *Bioinformatics* 37, 2245–2249. doi:10.1093/bioinformatics/btab115
- Gusev, A., Ko, A., Shi, H., Bhatia, G., Chung, W., Penninx, B. W., et al. (2016). Integrative Approaches for Large-Scale Transcriptome-wide Association Studies. *Nat. Genet.* 48 (3), 245–252. doi:10.1038/ng.3506
- Hirsch, H. A., Iliopoulos, D., Joshi, A., Zhang, Y., Jaeger, S. A., Bulyk, M., et al. (2010). A Transcriptional Signature and Common Gene Networks Link Cancer with Lipid Metabolism and Diverse Human Diseases. *Cancer Cell* 17 (4), 348–361. doi:10.1016/j.ccr.2010.01.022
- Holland, D., Frei, O., Desikan, R., Fan, C. C., Shadrin, A. A., Smeland, O. B., et al. (2020). Beyond SNP Heritability: Polygenicity and Discoverability of Phenotypes Estimated with a Univariate Gaussian Mixture Model. *PLoS Genet.* 16 (5), e1008612. doi:10.1371/journal.pgen.1008612
- Hou, L., Bergen, S. E., Akula, N., Song, J., Hultman, C. M., Landén, M., et al. (2016a). Genome-wide Association Study of 40,000 Individuals Identifies Two Novel Loci Associated with Bipolar Disorder. *Hum. Mol. Genet.* 25 (15), 3383–3394. doi:10.1093/hmg/ddw181
- Hou, L., Heilbronner, U., Degenhardt, F., Adli, M., Akiyama, K., Akula, N., et al. (2016b). Genetic Variants Associated with Response to Lithium Treatment in Bipolar Disorder: a Genome-wide Association Study. *Lancet* 387 (10023), 1085–1093. doi:10.1016/s0140-6736(16)00143-4
- Huang, Y., Wang, Y., Wang, H., Liu, Z., Yu, X., Yan, J., et al. (2019). Prevalence of Mental Disorders in China: a Cross-Sectional Epidemiological Study. *Lancet Psychiatry* 6 (3), 211–224. doi:10.1016/s2215-0366(18)30511-x
- Huckins, L. M., Dobbyn, A., McFadden, W., Wang, W., Ruderfer, D. M., Hoffman, G., et al. (2017). *Transcriptomic Imputation of Bipolar Disorder and Bipolar Subtypes Reveals 29 Novel Associated Genes*. bioRxiv: 222786.
- Ikedo, M., Takahashi, A., Takahashi, Y., Kamatani, Y., Okahisa, H., Kunugi, N., et al. (2018). A Genome-wide Association Study Identifies Two Novel Susceptibility Loci and Trans Population Polygenicity Associated with Bipolar Disorder. *Mol. Psychiatry* 23 (3), 639–647. doi:10.1038/mp.2016.259
- Insel, T., Cuthbert, B., Garvey, M., Heinssen, R., Pine, D. S., Quinn, K., et al. (2010). Research Domain Criteria (RDoC): toward a New Classification Framework for Research on Mental Disorders. *Ajp* 167 (7), 748–751. doi:10.1176/appi.ajp.2010.09091379
- International Consortium on Lithium, G., Amare, A. T., Schubert, K. O., Hou, L., Clark, S. R., Papiol, S., et al. (2018). Association of Polygenic Score for Schizophrenia and HLA Antigen and Inflammation Genes with Response to Lithium in Bipolar Affective Disorder: A Genome-wide Association Study. *JAMA Psychiatry* 75 (1), 65–74. doi:10.1001/jamapsychiatry.2017.3433
- Judd, L. L., Schettler, P. J., Solomon, D. A., Maser, J. D., Coryell, W., Akiskal, J. H. S., et al. (2008). Psychosocial Disability and Work Role Function Compared across the Long-Term Course of Bipolar I, Bipolar II and Unipolar Major Depressive Disorders. *J. Affect Disord.* 108 (1-2), 49–58. doi:10.1016/j.jad.2007.06.014
- Kieseppä, T., Partonen, T., Haukka, J., Lönnqvist, J. J., and Lönnqvist, J. (2004). High Concordance of Bipolar I Disorder in a Nationwide Sample of Twins. *Ajp* 161 (10), 1814–1821. doi:10.1176/ajp.161.10.1814
- Kozlovsky, N., Scarr, E., Agam, B. G., and Agam, G. (2006). Postmortem Brain Calcineurin Protein Levels in Schizophrenia Patients Are Not Different from Controls. *Schizophr. Res.* 83 (2-3), 173–177. doi:10.1016/j.schres.2005.12.843
- Kunii, Y., Hino, M., Matsumoto, J., Nagaoka, A., Nawa, H., Kakita, A., et al. (2019). Differential Protein Expression of DARPP-32 versus Calcineurin in the Prefrontal Cortex and Nucleus Accumbens in Schizophrenia and Bipolar Disorder. *Sci. Rep.* 9 (1), 14877. doi:10.1038/s41598-019-51456-7
- Li, H. J., Zhang, C., Hui, L., Zhou, D. S., Li, Y., Zhang, C. Y., et al. (2021). Novel Risk Loci Associated with Genetic Risk for Bipolar Disorder Among Han Chinese Individuals. *JAMA Psychiatry* 78 (3), 320–330. doi:10.1001/jamapsychiatry.2020.3738
- Liu, D. J., Peloso, G. M., Yu, H., Butterworth, A. S., Wang, X., Mahajan, A., et al. (2017). Exome-wide Association Study of Plasma Lipids in >300,000 Individuals. *Nat. Genet.* 49 (12), 1758–1766. doi:10.1038/ng.3977
- Merikangas, K. R., Jin, R., He, J. P., Kessler, R. C., Lee, S., Sampson, N. A., et al. (2011). Prevalence and Correlates of Bipolar Spectrum Disorder in the World Mental Health Survey Initiative. *Arch. Gen. Psychiatry* 68 (3), 241–251. doi:10.1001/archgenpsychiatry.2011.12
- Mitchell, B. L., Thorp, J. G., Wu, Y., Campos, A. I., Nyholt, D. R., Gordon, S. D., et al. (2021). Polygenic Risk Scores Derived from Varying Definitions of Depression and Risk of Depression. *JAMA Psychiatry* 78, 1152–1160. doi:10.1001/jamapsychiatry.2021.1988
- Mullins, N., Forstner, A. J., O'Connell, K. S., Coombes, B., Coleman, J. R. I., Qiao, Z., et al. (2021). Genome-wide Association Study of More Than 40,000 Bipolar Disorder Cases Provides New Insights into the Underlying Biology. *Nat. Genet.* 53 (6), 817–829. doi:10.1038/s41588-021-00857-4
- Ng, B., White, C. C., Klein, H. U., Sieberts, S. K., McCabe, C., Patrick, E., et al. (2017). An xQTL Map Integrates the Genetic Architecture of the Human Brain's Transcriptome and Epigenome. *Nat. Neurosci.* 20 (10), 1418–1426. doi:10.1038/nn.4632
- Pescosolido, M. F., Gamsiz, E. D., Morrow, S. E. M., and Morrow, E. M. (2013). Distribution of Disease-Associated Copy Number Variants across Distinct Disorders of Cognitive Development. *J. Am. Acad. Child Adolesc. Psychiatry* 52 (4), 414–430. e414. doi:10.1016/j.jaac.2013.01.003
- Peyrot, W. J., and Price, A. L. (2021). Identifying Loci with Different Allele Frequencies Among Cases of Eight Psychiatric Disorders Using CC-GWAS. *Nat. Genet.* 53 (4), 445–454. doi:10.1038/s41588-021-00787-1
- Psychiatric, G. C. B. D. W. G. (2011). Large-scale Genome-wide Association Analysis of Bipolar Disorder Identifies a New Susceptibility Locus Near ODZ4. *Nat. Genet.* 43 (10), 977–983. doi:10.1038/ng.943
- Qi, T., Wu, Y., Wu, J., Zeng, F., Zhang, A., Xue, L., et al. (2018). Identifying Gene Targets for Brain-Related Traits Using Transcriptomic and Methylation Data from Blood. *Nat. Commun.* 9 (1), 2282. doi:10.1038/s41467-018-04558-1
- Ruderfer, D. M., Fanous, A. H., Ripke, S., McQuillin, A., Amdur, R. L., Gejman, C., et al. (2014). Polygenic Dissection of Diagnosis and Clinical Dimensions of Bipolar Disorder and Schizophrenia. *Mol. Psychiatry* 19 (9), 1017–1024. doi:10.1038/mp.2013.138
- Sabatti, C., Service, S. K., Hartikainen, A. L., Pouta, A., Ripatti, S., Brodsky, J., et al. (2009). Genome-wide Association Analysis of Metabolic Traits in a Birth Cohort from a Founder Population. *Nat. Genet.* 41 (1), 35–46. doi:10.1038/ng.271
- Schizophrenia Working Group of the Psychiatric Genomics Consortium (2014). Biological Insights from 108 Schizophrenia-Associated Genetic Loci. *Nature* 511 (7510), 421–427. doi:10.1038/nature13595
- Shi, Y., Zhao, X., Yu, L., Tao, R., Tang, J., La, Y., et al. (2004). Genetic Structure Adds Power to Detect Schizophrenia Susceptibility at SLIT3 in the Chinese Han Population. *Genome Res.* 14 (7), 1345–1349. doi:10.1101/gr.1758204
- Song, J., Bergen, S. E., Bergen, A., Di Florio, R., Karlsson, A., Charney, D. M., et al. (2016). Genome-wide Association Study Identifies SESTD1 as a Novel Risk Gene for Lithium-Responsive Bipolar Disorder. *Mol. Psychiatry* 21 (9), 1290–1297. doi:10.1038/mp.2015.165
- Stahl, E. A., Breen, G., Breen, A. J., Forstner, A., McQuillin, S., Ripke, V., et al. (2019). Bipolar Disorder Working Group of the Psychiatric Genomics Genome-wide Association Study Identifies 30 Loci Associated with Bipolar Disorder. *Nat. Genet.* 51 (5), 793–803. doi:10.1038/s41588-019-0397-8
- Tabassum, R., Ramo, J. T., Rämö, P., Ripatti, J. T., Koskela, M., Kurki, J., et al. (2019). Genetic Architecture of Human Plasma Lipidome and its Link to Cardiovascular Disease. *Nat. Commun.* 10 (1), 4329. doi:10.1038/s41467-019-11954-8
- Tintle, N. L., Pottala, J. V., Lacey, S., Ramachandran, V., Westra, J., Rogers, A., et al. (2015). A Genome-wide Association Study of Saturated, Mono- and Polyunsaturated Red Blood Cell Fatty Acids in the Framingham Heart Offspring Study. *Prostagl. Leukot. Essent. Fat. Acids* 94, 65–72. doi:10.1016/j.plefa.2014.11.007
- Trubetskoy, V., Pardinas, A. F., Qi, T., Panagiotaropoulou, G., Awasthi, S., Bigdeli, T. B., et al. (2022). Group of the Psychiatric Genomics Mapping Genomic Loci Implicates Genes and Synaptic Biology in Schizophrenia. *Nature* 604 (7906), 502–508. doi:10.1038/s41586-022-04434-5
- Valli, I., Young, C. A. H., and Young, A. H. (2019). Uncovering Neurodevelopmental Features in Bipolar Affective Disorder. *Br. J. Psychiatry* 215 (1), 383–385. doi:10.1192/bjp.2019.117
- van der Meer, D., Frei, O., Kaufmann, T., Shadrin, A. A., Devor, A., Smeland, O. B., et al. (2020). Understanding the Genetic Determinants of the Brain with MOSTest. *Nat. Commun.* 11 (1), 3512. doi:10.1038/s41467-020-17368-1

- Van Veldhoven, P. P. (2010). Biochemistry and Genetics of Inherited Disorders of Peroxisomal Fatty Acid Metabolism. *J. Lipid Res.* 51 (10), 2863–2895. doi:10.1194/jlr.R005959
- Vargesson, N., Luria, V., Messina, I., Laufer, L. E., and Laufer, E. (2001). Expression Patterns of Slit and Robo Family Members during Vertebrate Limb Development. *Mech. Dev.* 106 (1–2), 175–180. doi:10.1016/s0925-4773(01)00430-0
- Verbanck, M., Chen, C. Y., Do, B. R., and Do, R. (2018). Detection of Widespread Horizontal Pleiotropy in Causal Relationships Inferred from Mendelian Randomization between Complex Traits and Diseases. *Nat. Genet.* 50 (5), 693–698. doi:10.1038/s41588-018-0099-7
- Vösa, U., Claringbould, A., Westra, H. J., Bonder, M. J., Deelen, P., Zeng, B., et al. (2021). Large-scale Cis- and Trans-eQTL Analyses Identify Thousands of Genetic Loci and Polygenic Scores that Regulate Blood Gene Expression. *Nat. Genet.* 53 (9), 1300–1310. doi:10.1038/s41588-021-00913-z
- Wain, L. V., Shrine, N., Shrine, M. S., Artigas, A. M., Erzurumluoglu, B., Noyvert, L., et al. (2017). Genome-wide Association Analyses for Lung Function and Chronic Obstructive Pulmonary Disease Identify New Loci and Potential Druggable Targets. *Nat. Genet.* 49 (3), 416–425. doi:10.1038/ng.3787
- Wang, K., Hakonarson, M. H., and Hakonarson, H. (2010). ANNOVAR: Functional Annotation of Genetic Variants from High-Throughput Sequencing Data. *Nucleic Acids Res.* 38 (16), e164. doi:10.1093/nar/gkq603
- Watanabe, K., Taskesen, E., van Bochoven, A., and Posthuma, D. (2017). Functional Mapping and Annotation of Genetic Associations with FUMA. *Nat. Commun.* 8 (1), 1826. doi:10.1038/s41467-017-01261-5
- Whirl-Carrillo, M., McDonagh, E. M., Hebert, J. M., Gong, L., Sangkuhl, K., Thorn, C. F., et al. (2012). Pharmacogenomics Knowledge for Personalized Medicine. *Clin. Pharmacol. Ther.* 92 (4), 414–417. doi:10.1038/clpt.2012.96
- Wray, N. R., Ripke, S., Ripke, M., Mattheisen, M., Trzaskowski, E. M., Byrne, A., et al. (2018). Depressive Disorder Working Group of the Psychiatric Genomics Genome-wide Association Analyses Identify 44 Risk Variants and Refine the Genetic Architecture of Major Depression. *Nat. Genet.* 50 (5), 668–681. doi:10.1038/s41588-018-0090-3
- Wu, Y., Cao, H., Baranova, A., Huang, H., Li, S., Cai, L., et al. (2020). Multi-trait Analysis for Genome-wide Association Study of Five Psychiatric Disorders. *Transl. Psychiatry* 10 (1), 209. doi:10.1038/s41398-020-00902-6
- Yang, J., Lee, S. H., Visscher, M. E. P. M., and Visscher, P. M. (2011). GCTA: a Tool for Genome-wide Complex Trait Analysis. *Am. J. Hum. Genet.* 88 (1), 76–82. doi:10.1016/j.ajhg.2010.11.011
- Yatham, L. N., Kennedy, S. H., Parikh, S. V., Schaffer, A., Bond, D. J., Frey, B. N., et al. (2018). Canadian Network for Mood and Anxiety Treatments (CANMAT) and International Society for Bipolar Disorders (ISBD) 2018 Guidelines for the Management of Patients with Bipolar Disorder. *Bipolar Disord.* 20 (2), 97–170.
- Zhu, Z., Zhang, F., Hu, H., Bakshi, A., Robinson, M. R., Powell, J. E., et al. (2016). Integration of Summary Data from GWAS and eQTL Studies Predicts Complex Trait Gene Targets. *Nat. Genet.* 48 (5), 481–487. doi:10.1038/ng.3538
- Zhu, Z., Zheng, Z., Zhang, F., Wu, Y., Trzaskowski, M., Maier, R., et al. (2018). Causal Associations between Risk Factors and Common Diseases Inferred from GWAS Summary Data. *Nat. Commun.* 9 (1), 224. doi:10.1038/s41467-017-02317-2

Conflict of Interest: The authors declare that the research was conducted in the absence of any commercial or financial relationships that could be construed as a potential conflict of interest.

Publisher's Note: All claims expressed in this article are solely those of the authors and do not necessarily represent those of their affiliated organizations, or those of the publisher, the editors, and the reviewers. Any product that may be evaluated in this article, or claim that may be made by its manufacturer, is not guaranteed or endorsed by the publisher.

Copyright © 2022 Huang, Liu, Wu, Tang, Zhang, Liu, Xiao, Tao, Xie, Dai, Li, Gui and Wang. This is an open-access article distributed under the terms of the Creative Commons Attribution License (CC BY). The use, distribution or reproduction in other forums is permitted, provided the original author(s) and the copyright owner(s) are credited and that the original publication in this journal is cited, in accordance with accepted academic practice. No use, distribution or reproduction is permitted which does not comply with these terms.