



# Protein Kinase A and 5' AMP-Activated Protein Kinase Signaling Pathways Exert Opposite Effects on Induction of Autophagy in Luteal Cells

Emilia Przygodzka<sup>1</sup>, Corrine F. Monaco<sup>1,2</sup>, Michele R. Plewes<sup>1,3</sup>, Guojuan Li<sup>1</sup>, Jennifer R. Wood<sup>4</sup>, Andrea S. Cupp<sup>1,4</sup> and John S. Davis<sup>1,3\*</sup>

<sup>1</sup>Department of Obstetrics and Gynecology, Olson Center for Women's Health, University of Nebraska Medical Center, Omaha, NE, United States, <sup>2</sup>Department of Cellular and Integrative Physiology, University of Nebraska Medical Center, Omaha, NE, United States, <sup>3</sup>Veterans Affairs Nebraska Western Iowa Health Care System, Omaha, NE, United States, <sup>4</sup>Department of Animal Science, University of Nebraska-Lincoln, Lincoln, NE, United States

## OPEN ACCESS

### Edited by:

Jia-Qing Zhang,  
Institute of Animal Husbandry and  
Veterinary Science, China

### Reviewed by:

Xi Ma,  
China Agricultural University, China  
Chunping Zhang,  
Nanchang University, China

### \*Correspondence:

John S. Davis  
jsdavis@unmc.edu

### Specialty section:

This article was submitted to  
Cell Growth and Division,  
a section of the journal  
Frontiers in Cell and Developmental  
Biology

**Received:** 10 June 2021

**Accepted:** 22 October 2021

**Published:** 08 November 2021

### Citation:

Przygodzka E, Monaco CF, Plewes MR, Li G, Wood JR, Cupp AS and Davis JS (2021) Protein Kinase A and 5' AMP-Activated Protein Kinase Signaling Pathways Exert Opposite Effects on Induction of Autophagy in Luteal Cells.  
*Front. Cell Dev. Biol.* 9:723563.  
doi: 10.3389/fcell.2021.723563

In the absence of pregnancy the ovarian corpus luteum undergoes regression, a process characterized by decreased production of progesterone and structural luteolysis involving apoptosis. Autophagy has been observed in the corpus luteum during luteal regression. Autophagy is a self-degradative process important for balancing sources of cellular energy at critical times in development and in response to nutrient stress, but it can also lead to apoptosis. Mechanistic target of rapamycin (MTOR) and 5' AMP-activated protein kinase (AMPK), key players in autophagy, are known to inhibit or activate autophagy, respectively. Here, we analyzed the signaling pathways regulating the initiation of autophagy in bovine luteal cells. *In vivo* studies showed increased activating phosphorylation of AMPK $\alpha$  (Thr172) and elevated content of LC3B, a known marker of autophagy, in luteal tissue during PGF2 $\alpha$ -induced luteolysis. *In vitro*, AMPK activators 1) stimulated phosphorylation of regulatory associated protein of MTOR (RPTOR) leading to decreased activity of MTOR, 2) increased phosphorylation of Unc-51-Like Kinase 1 (ULK1) and Beclin 1 (BECN1), at sites specific for AMPK and required for autophagy initiation, 3) increased levels of LC3B, and 4) enhanced colocalization of autophagosomes with lysosomes indicating elevated autophagy. In contrast, LH/PKA signaling in luteal cells 1) reduced activation of AMPK $\alpha$  and phosphorylation of RPTOR, 2) elevated MTOR activity, 3) stimulated phosphorylation of ULK1 at site required for ULK1 inactivation, and 4) inhibited autophagosome formation as reflected by reduced content of LC3B-II. Pretreatment with AICAR, a pharmacological activator of AMPK, inhibited LH-mediated effects on RPTOR, ULK1 and BECN1. Our results indicate that luteotropic signaling via LH/PKA/MTOR inhibits, while luteolytic signaling via PGF2 $\alpha$ /Ca<sup>2+</sup>/AMPK activates key signaling pathways involved in luteal cell autophagy.

**Keywords:** corpus luteum, PGF2 $\alpha$ , luteinizing hormone, AMPK, PKA, MTOR, LC3B, Ulk1

## INTRODUCTION

The corpus luteum is a transient endocrine gland crucial for the establishment and maintenance of pregnancy. Luteinizing hormone (LH), a gonadotropin produced by the pituitary gland, regulates the formation, development, and maintenance of the corpus luteum (Davis and Rueda 2002; Berisha and Schams 2005). A main function of the corpus luteum is to produce progesterone, a steroid hormone that regulates embryo development, reduces uterine contractions, suppresses maternal immune response, prepares endometrium for implantation, prevents preeclampsia, and regulates the estrous/menstrual cycle (Davis and Rueda 2002; Park et al., 2020; Pereira et al., 2021). In the absence of an embryo, the corpus luteum undergoes regression, a process characterized by decreased production of progesterone and structural luteolysis (Juengel et al., 1993; Rueda et al., 1997; McCracken et al., 1999), ultimately resulting in the formation of a fibrotic scar called the corpus albicans. Luteolysis is triggered by a lack of gonadotropin support and/or prostaglandin F<sub>2α</sub> (PGF<sub>2α</sub>), produced within the gland and/or by the endometrium in domestic farm animals (McCracken et al., 1972; Bennegård et al., 1991; Pereira et al., 2021). If fertilization occurs, the presence of live embryos in the uterus extends the lifespan of the corpus luteum due to the luteotrophic and anti-luteolytic actions of conceptus signals (Davis and Rueda 2002).

The luteolytic action of PGF<sub>2α</sub> is mediated by binding to its G-protein coupled receptor and activating Gαq/11, which ultimately evokes multiple intracellular signals such as activation of phospholipases C and A<sub>2</sub>, elevation of intracellular calcium ions, and activation of calmodulin, protein kinase C (PKC) and mitogen-activated protein kinase (MAPK) signaling cascades (Davis et al., 1987; McCann and Flint 1993; Chen et al., 2001; Arvisais et al., 2010; Kurusu et al., 2012). These pathways trigger the activation of early response genes leading to molecular changes in the luteal tissue, consequently initiating functional and structural luteolysis (Chen et al., 2001; Talbott et al., 2017; Pate 2020). Recent studies showed that PGF<sub>2α</sub> enhances autophagy in rat, goat, and bovine luteal cells during regression (Choi et al., 2011; Aboelenain et al., 2015; Grzesiak et al., 2018; Wen et al., 2020). Moreover, the expression of genes associated with autophagy (MAP1LC3A, MAP1LC3B, ATG3, and ATG7) and the protein content of microtubule associated protein 1 light chain 3 beta (MAP1LC3B commonly referred to as LC3B), a known marker of the formation of autophagosomal vacuoles, increased in the bovine corpus luteum during the late luteal phase in comparison to the mid-luteal phase (Aboelenain et al., 2015). Similar changes were observed in the corpus luteum of mice during heat stress (Ullah et al., 2019).

Autophagy is the so called “self-eating” process during which cells digest damaged or old organelles in order to recycle intracellular content providing building blocks required to maintain basic cellular functions (Parzych and Klionsky 2014). Due to the different types of cargo digested, autophagy is divided into microautophagy, chaperone-mediated autophagy, and macroautophagy. The best characterized type of autophagy is macroautophagy, which is initiated by isolation of the targeted

cytoplasmic constituents from the rest of the cell within a double-membraned vesicle known as an autophagosome. Mature autophagosomes are transported to the perinuclear region where they fuse with lysosomes leading to degradation of the autophagosome cargo (Parzych and Klionsky 2014). Although autophagy is often considered as a pro-survival process, there is growing body of evidence that autophagy can lead to apoptosis (Song et al., 2018; Denton and Kumar 2019).

The process of autophagy is oppositely regulated by two main intracellular protein kinases i.e., 5' AMP-activated protein kinase (AMPK) and mechanistic target of rapamycin kinase (MTOR) (Yang and Klionsky 2009; He et al., 2018; Wang and Zhang 2019). AMPK activates autophagy at different posttranscriptional levels including 1) inactivation of MTOR via phosphorylation of regulatory-associated protein of MTOR complex 1 (RPTOR) and 2) direct activation of proteins related to autophagosome formation such as Unc-51-Like Kinase 1, ULK1, a mammalian orthologue of Atg1 or Beclin-1 (BECN1) (Gwinn et al., 2008; Kim et al., 2011; Kim et al., 2013). In addition, AMPK can also regulate the activities of transcription factor EB (TFEB) and forkhead box O3 (FOXO3), transcription factors governing expression of autophagic genes (Yang and Klionsky 2009). In contrast, MTOR inhibits autophagy by phosphorylation of ULK1 at Ser757, which inhibits the kinase activity of the ULK1 complex via disruption of the interaction between ULK1 and AMPK (Egan et al., 2011; Kim et al., 2011). Thus, AMPK and MTOR signaling exert opposite regulatory effects on the induction of autophagy.

In the ovary, autophagy has been associated with follicle development and atresia as well as luteal formation and regression (Escobar et al., 2008; Choi et al., 2011; Aboelenain et al., 2015; Grzesiak et al., 2018; Meng et al., 2018; Zhang et al., 2018; Tang et al., 2019; Tang et al., 2020; Wen et al., 2020). However, the signaling pathways responsible for regulation of autophagy in luteal cells have received little attention. Previous studies established that LH, the main hormone regulating formation and maintenance of the corpus luteum, decreases activity of AMPK and increases the activity of MTOR via protein kinase A (PKA) signaling in bovine luteal cells (Hou, Arvisais and Davis 2010; Tang et al., 2020; Przygodzka et al., 2021). In contrast, the luteolytic hormone PGF<sub>2α</sub> stimulates AMPK activity in response to elevations in intracellular calcium at the time of luteolysis (Bowdridge et al., 2015). Thus, we hypothesize that PKA/MTOR signaling and AMPK signaling exert opposite effects on proteins involved in autophagy induction in luteal cells. The aims of the present study were to determine: 1) the acute effects of AMPK on phosphorylation of key autophagy initiating proteins (RPTOR, ULK1, BECN1); 2) the role of PKA signaling on the phosphorylation of MTOR, AMPK, RPTOR and ULK1, as well as the content of LC3B-II, a marker of autophagy; and 3) the effects of AMPK on LH-stimulated phosphorylation of RPTOR and BECN1 in luteal cells.

## MATERIALS AND METHODS

### Reagents

Antibodies used for this study are listed in **Table 1**. M199 and fetal bovine serum were from Cambrex (Walkersville, MD,

**TABLE 1** | Antibodies Used in this Study.

Antibody name	Species specificity	Source	Dilution	Catalog number	Company
phospho-BECLIN Ser93	Mouse	Rabbit pAB	1:1,000	14717	Cell Signaling Technology (Beverly, MA, United States)
phospho-RAPTOR Ser792	Mouse	Rabbit pAB	1:1,000	2083	Cell Signaling Technology (Beverly, MA, United States)
phospho-ULK1 Ser757	Mouse	Rabbit pAB	1:1,000	6888	Cell Signaling Technology (Beverly, MA, United States)
phospho-ULK1 Ser317	Mouse	Rabbit pAB	1:1,000	37762	Cell Signaling Technology (Beverly, MA, United States)
ULK1	Mouse	Rabbit mAB	1:1,000	8054	Cell Signaling (Beverly, MA, United States)
phospho-MTOR Ser2448	Mouse	Rabbit pAB	1:1,000	2917	Cell Signaling Technology (Beverly, MA, United States)
phospho-AMPK Thr172	Mouse	Rabbit pAB	1:1,000	2535	Cell Signaling Technology (Beverly, MA, United States)
phospho-AMPK Ser485	Mouse	Rabbit pAB	1:1,000	4185	Cell Signaling Technology (Beverly, MA, United States)
BECN1	Mouse	Rabbit pAB	1:1,000	3738	Cell Signaling (Beverly, MA, United States)
LC3B	Mouse	Rabbit mAB	1:1,000	3868	Cell Signaling Technology (Beverly, MA, United States)
ACTB	Bovine	Mouse mAB	1:10,000	A5441	Sigma Chemical Co. (St. Louis, MO, United States)
HRP linked	Anti-rabbit	Goat pAB	1:10,000	111035003	Jackson Research Laboratory (West Grove, PA, United States)
HRP linked	Anti-mouse	Goat pAB	1:10,000	115035205	Jackson Research Laboratory (West Grove, PA, United States)
phospho-p70S6K Thr 389	Mouse	Rabbit mAB	1:1,000	9234	Cell Signaling (Beverly, MA, United States)
phospho-ERK1/2 Thr202/ Tyr204	Mouse	Rabbit pAB	1:1,000	9101	Cell Signaling (Beverly, MA, United States)

United States). Type II collagenase was obtained from Atlantic Biologicals (Lawrenceville, GA, United States). Compound C (AMPK inhibitor) was obtained from Millipore Corporation (Burlington, MA, United States). PGF2 $\alpha$  was purchased from Cayman Chemical Company (Ann Arbor, MI, United States). Forskolin (adenylyl cyclase activator), and Rapamycin (MTOR inhibitor) were purchased from EMD Chemicals, Inc. (Gibbstown, NJ, United States). H89 (PKA inhibitor) and chloroquine (lysosome inhibitor), were obtained from Tocris Bioscience (Minneapolis, MN, United States). Bovine LH was purchased from Tucker Endocrine Research Institute (Atlanta, GA). 5-Aminoimidazole-4-carboxamide-1- $\beta$ -D-ribofuranoside (AICAR, AMPK activator) was from Toronto Research Chemicals Inc. (Toronto, Ontario, Canada). Protease and phosphatase inhibitor cocktails, CYTO-ID autophagy kit 2.0 was purchased from Enzo Life Sciences Inc. (Farmingdale, NY, United States) (Guo et al., 2015). Organelle specific dyes (Mitotracker Deep Red, LysoTracker, LipiBlue) and Pierce ECL Western Blotting Substrate were purchased from Thermo Fisher Scientific (Waltham, MA, United States). The protein assay kit was purchased from Bio-Rad Laboratory (Richmond, CA, United States). Nitrocellulose membranes for western blotting were from Millipore (Bedford, MA, United States). The adenoviruses encoding dominant-negative HA-tagged AMPK $\alpha$ 1 (Ad.dn.AMPK) with a D159A mutation in the ATP-binding domain were purchased from Eton Bioscience (San Diego, CA, United States) and used as previously described (Przygodzka et al., 2021). The AMPK $\alpha$ 1 mutant cannot bind to ATP and competes with wild-type AMPK for binding with the  $\beta$  and  $\gamma$  subunits. The control adenoviruses with cytomegalo virus promoter (Ad-Empty) were used as previously described (Taurin et al., 2008).

## Animal Preparation, *in vivo* Experiments and Ovariectomies

All animal procedures were approved by the IACUC at the University of Nebraska-Lincoln. Non-lactating crossbred beef cows between 2 and 6 years in age (Red Angus, Pingsgauer, Red Poll, Herford composites with some Red Angus/Limousin) from the UNL Physiology research and teaching herds were used. To synchronize animal estrous cycles PGF2 $\alpha$  (25mg; Lutalyse<sup>®</sup>, Zoetis Inc.,

Kalamazoo Michigan, MI) was injected on Day 1 with a subsequent injection of GnRH 36 h later. Ovulation occurs 24 h post-GnRH injection, and on day 13.5 cows will have fully functional mid-luteal phase corpus luteum, equivalent to day 10 in the natural cycle. Cows were fasted for 12–18 h before ovariectomy but retained ad libitum access to water. At day 13.5 cows were treated with an intra-muscular injection of saline (n = 3) or PGF2 $\alpha$  (25mg; Lutalyse<sup>®</sup>) (n = 3). Transrectal ultrasonography was performed immediately before ovariectomy to confirm the presence of corpus luteum. Ovaries were removed via a right-flank approach paralumbar fossa laparotomy, to avoid the rumen and prevent internal hemorrhaging, as previously detailed (Summers et al., 2014; Talbott et al., 2017). Portions of luteal tissue were snap frozen using liquid nitrogen for subsequent protein analysis.

## Isolation and Culture of Bovine Luteal Cells

Cells were isolated as previously described (Hou et al., 2010; Przygodzka et al., 2021). Ovaries of early pregnant cows (fetal crown rump length <12 cm) were obtained from a local abattoir (JBS, Omaha, NE) and transported to the laboratory in cold M199, on ice. Corpora lutea were sliced and dissociated with collagenase (1.03 U/mL). Small and large luteal cells were separated by centrifugal elutriation as previously described (Hou et al., 2010), which were then cultured overnight on tissue culture plates in basal medium [M199 containing 0.1% bovine serum albumin (BSA) and antibiotics] with 5% fetal bovine serum at 37°C in a humidified atmosphere of 5% CO<sub>2</sub>. Two hours prior to the addition of treatments, the medium was removed, cells were washed in warm phosphate-buffered saline (PBS) and equilibrated in serum-free basal medium.

## Western Blot Analysis

Cell lysis and Western blot analysis were performed as previously published (Hou et al., 2010). Lysates were subjected to separation on 10% SDS-PAGE (30  $\mu$ g protein per lane) and transferred onto nitrocellulose membranes, which were then blocked with 5% BSA in Tris-buffered saline with 0.1% Tween-20 (TBST) at room temperature for 1 h. Then, membranes were incubated with primary antibodies (Table 1) at 4°C overnight. Membranes

were washed with TBST and blocked in secondary HRP-conjugated antibodies (1: 10,000) in 2.5% non-fat milk in TBST for 1 h, followed by a second series of washes. Blots were imaged and quantified using a Biospectrum Imaging System.

## Immunostaining and Confocal Microscopy

Confocal microscopy was used to evaluate the effects of LH and AICAR on the presence and regulation of autophagosomes in bovine luteal cells. Mixed luteal cells were seeded at a density of  $3 \times 10^5$  cells/well on cell culture imaging dishes equipped with #1.5 glass bottom slide and maintained at 37°C in an atmosphere of 95% humidified air and 5% CO<sub>2</sub>. Adhered luteal cells were equilibrated in fresh culture medium enriched with 1% BSA for 2 h prior to stimulation with LH (10 ng/ml) or AICAR (1 mM) for 3 h. Organelle specific dyes, CYTO-ID® Green Detection Reagent (autophagosomes), Mitotracker Deep Red (mitochondria), LysoTracker (lysosomes), and LipiBlue (lipid droplets) were added to each well according to manufacturer's protocol and maintained at 37°C in an atmosphere of 95% humidified air and 5% CO<sub>2</sub> for 30 min. Following incubation, cells were fixed for 30 min with 200 µl 4% paraformaldehyde at 4°C and rinsed three times with PBS.

Images were collected using a Zeiss LSM800 confocal microscope with Airyscan equipped with a 20× (0.8 N.A) and ×63 oil immersion objective (1.4 N.A) and acquisition image size of 1,024 × 1,024 pixel (245.73 µm × 245.73 µm for 20×; 78.01 µm × 78.01 µm for 63×). The appropriate filters were used to excite each fluorophore and emission of light was collected between 450 and 1,000 nm. Cells were randomly selected, and z-stacked (0.3 µm) images were generated from bottom to top of each experiment. To determine the effects of LH or AICAR on mean fluorescence intensity of CYTO-ID® Green Detection Reagent, images were converted to maximum intensity projections and processed utilizing ImageJ (National Institutes of Health) analysis software. Mean fluorescence intensity was determined as previously described (Plewes et al., 2020; Talbott et al., 2020).

## Statistical Analysis

The data are presented as the means ± standard error of the mean (SEM) from multiple experiments (at least 3 independent experiments from different animals). GraphPad Prism v. 8.0 software was used for statistical analysis. Data were analyzed by either Student's t-test, or one-way analysis of variance (ANOVA) followed by Bonferroni multiple comparison tests. Statistical significance was determined as  $p < 0.05$ .

## RESULTS

### Phosphorylation of AMP-Activated Protein Kinase $\alpha$ and Content of Autophagy Marker Increase in the Corpus Luteum During Luteolysis

*In vivo* experiments showed an elevated ( $p < 0.05$ ) phosphorylation of AMPK $\alpha$  at Thr172, a site required for AMPK activity, in luteal tissue post-PGF2 $\alpha$  injection.

Simultaneously, we observed increased ( $p < 0.05$ ) content of LC3B in luteal tissue of cows injected with PGF2 $\alpha$  in comparison to untreated animals (Figures 1A,B).

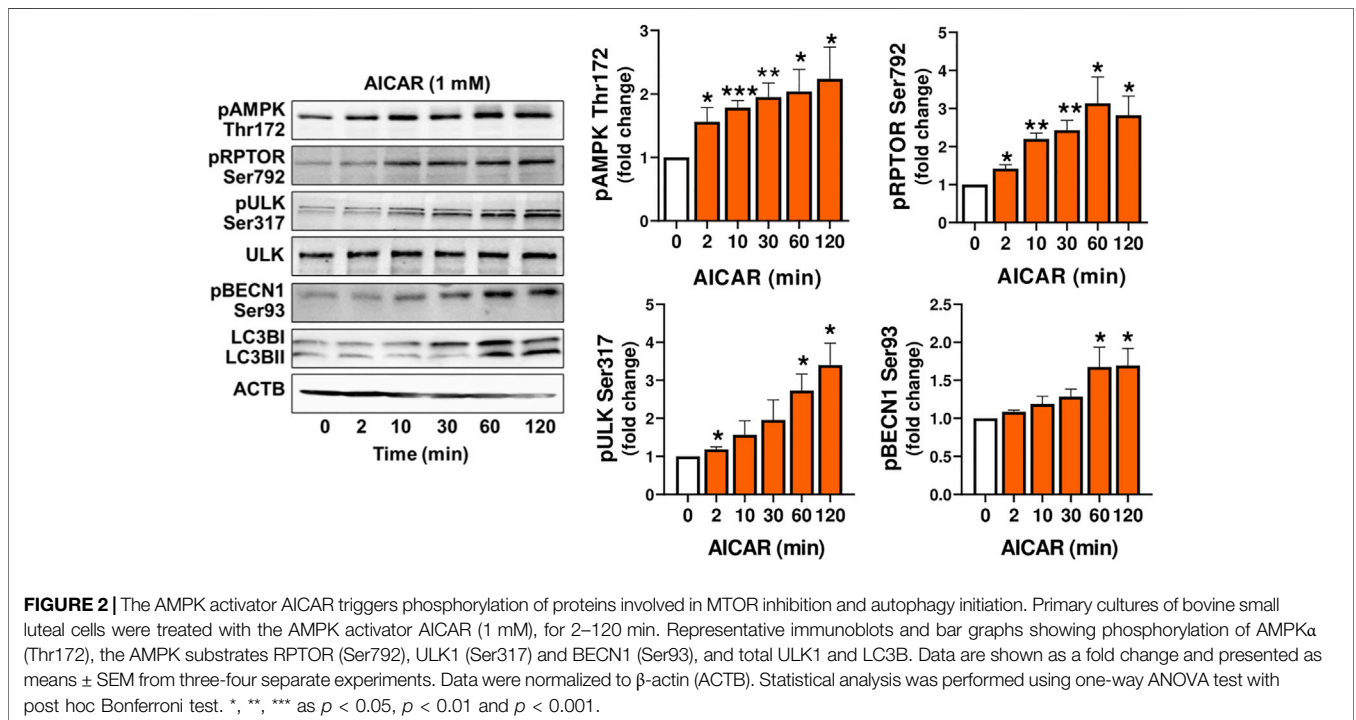
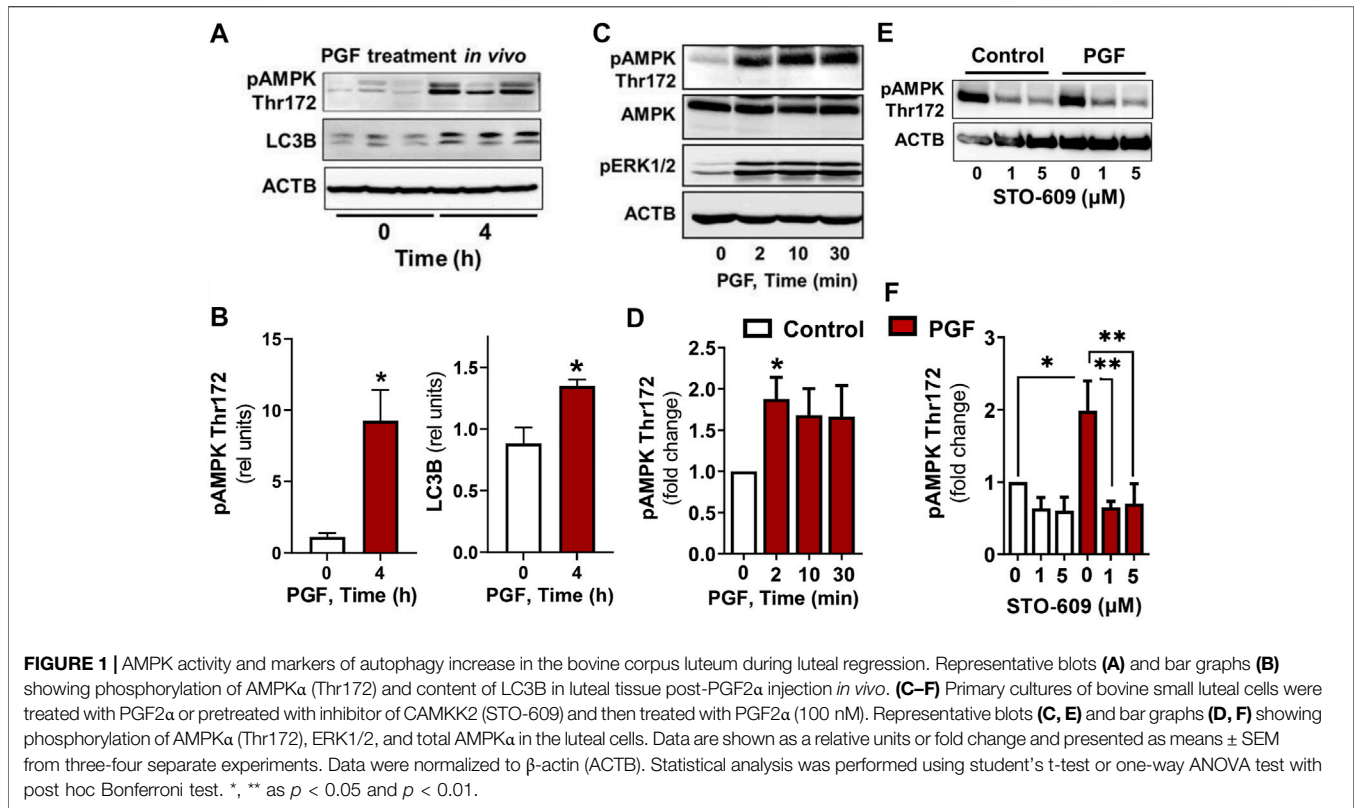
### Prostaglandin F2 $\alpha$ /Calmodulin Dependent Protein Kinase Kinase 2 Simulates Phosphorylation of AMP-Activated Protein Kinase $\alpha$

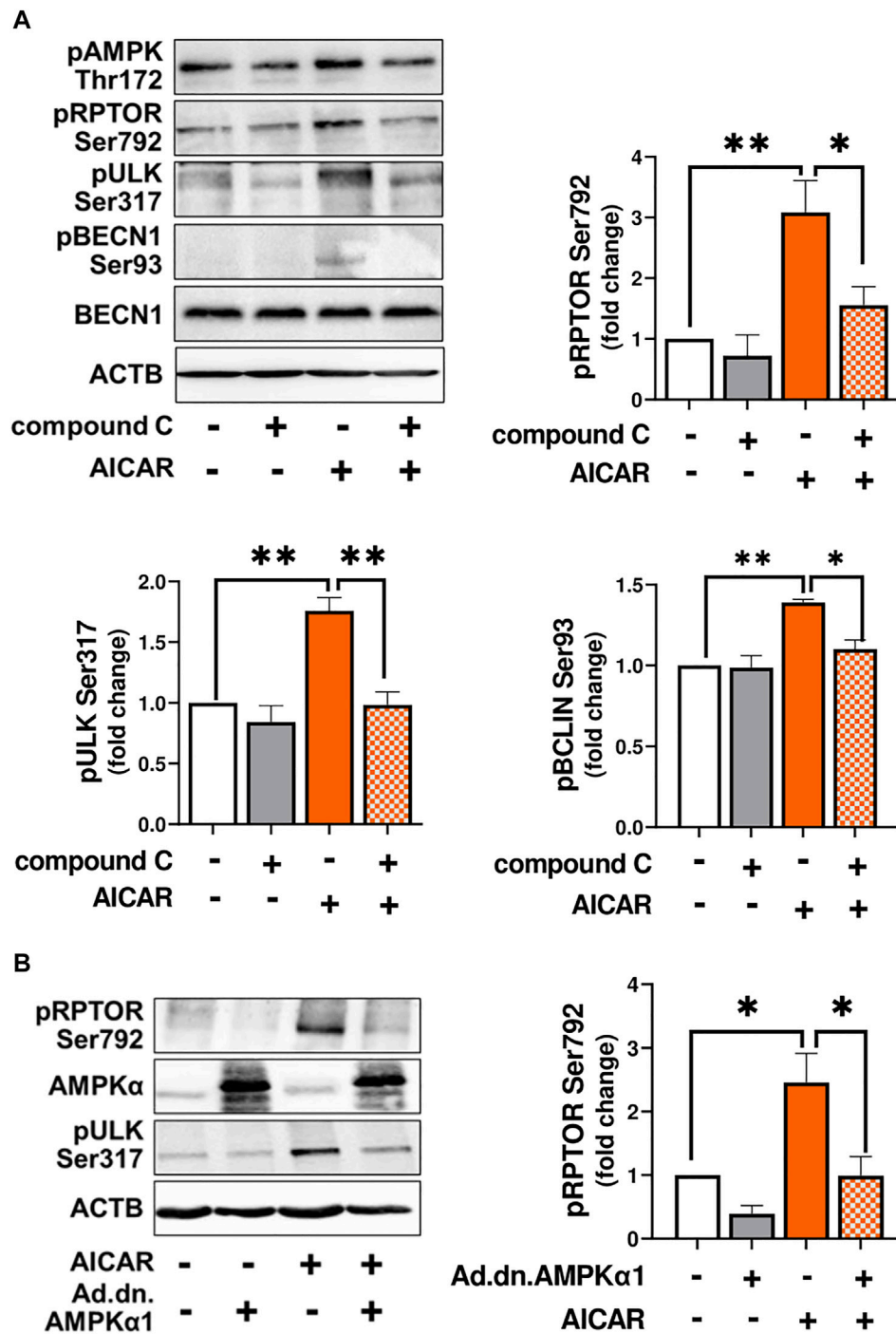
To confirm that PGF2 $\alpha$  triggers AMPK, bovine large luteal cells were incubated in the presence of PGF2 $\alpha$  for 2–30 min. We observed a rapid increase ( $p < 0.05$ ) in phosphorylation of AMPK $\alpha$  Thr172 in cells incubated with PGF2 $\alpha$  (Figures 1C,D). Enhanced phosphorylation of ERK (extracellular signal-regulated protein kinase) was observed in response to PGF2 $\alpha$  (Figure 1C), confirming effective activation of PGF2 $\alpha$  receptors. Knowing that AMPK can be activated by calcium/calmodulin dependent protein kinase kinase 2 (CAMKK2), a kinase evoked by PGF2 $\alpha$  in bovine luteal tissue (Davis et al., 1987; Bowdridge et al., 2015; Herzig and Shaw 2018), we pretreated luteal cells with inhibitor of CAMKK2, STO-609, and then treated them with PGF2 $\alpha$ . Preincubation with STO-609 abolished the stimulatory effect of PGF2 $\alpha$  on AMPK $\alpha$  phosphorylation (Figures 1E,F).

### AMP-Activated Protein Kinase Stimulates Phosphorylation of Proteins Required for Mechanistic Target of Rapamycin Kinase Inhibition and Autophagy Initiation

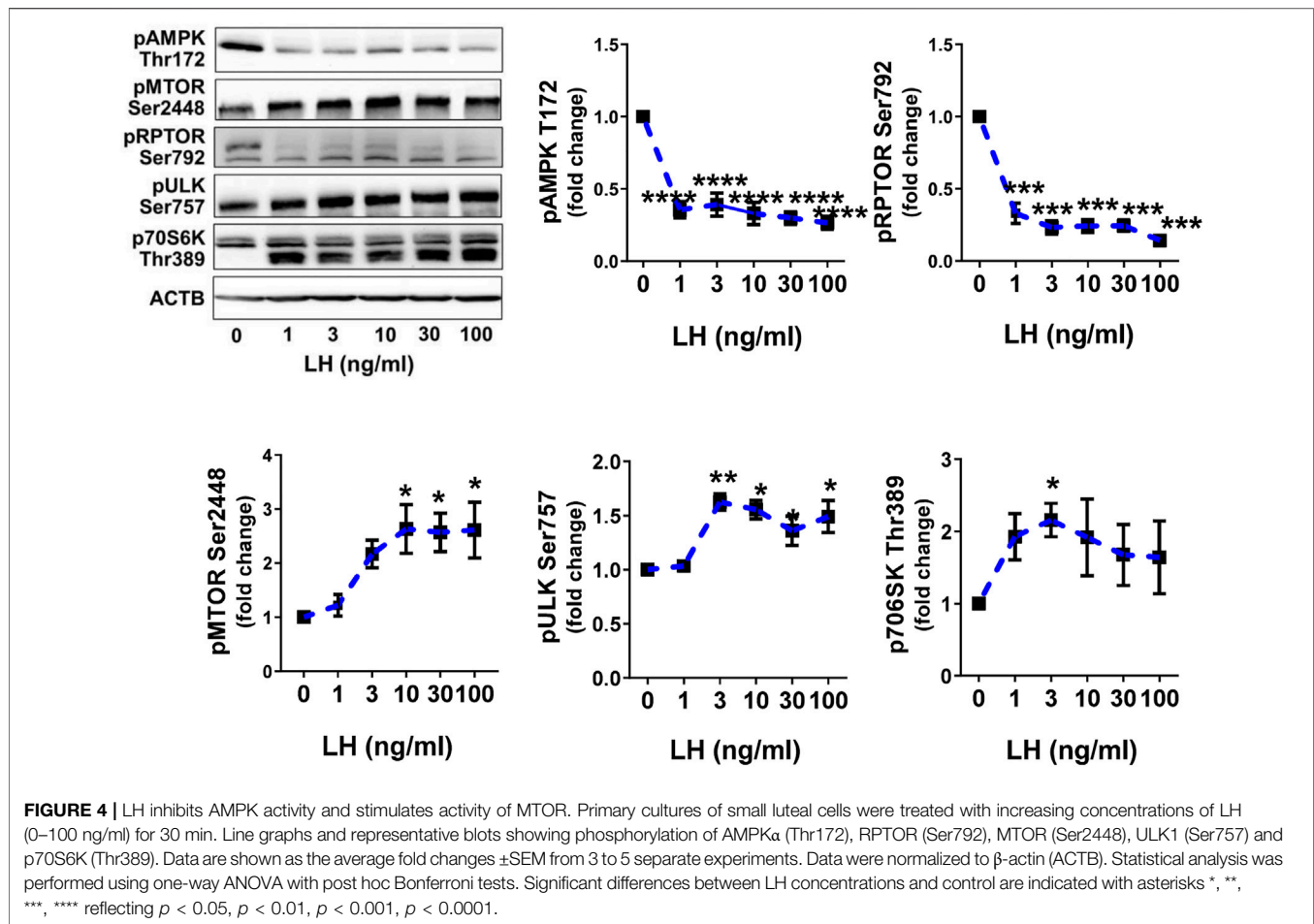
Experiments were conducted to determine whether AMPK stimulates the phosphorylation of proteins involved in the induction of autophagy (RPTOR, ULK1 and BECN1) in luteal cells. Treatment of luteal cells with AICAR (1 mM) induced ( $p < 0.001$ ) time-dependent phosphorylation of the activation loop of AMPK $\alpha$  (Thr172) in comparison with control cells confirming the effective action of AMPK activity in the luteal cells. Simultaneously, AICAR rapidly increased ( $p < 0.01$ ) phosphorylation of RPTOR at Ser792, a site that inhibits MTOR activation (Gwinn et al., 2008). The AICAR-induced RPTOR phosphorylation persisted for over 120 min in small luteal cells. Treatment with AICAR also stimulated phosphorylation of ULK1 (Ser317) and BECN1 (Ser93) in luteal cells (Figure 2), both of which contribute to initiation of autophagy (Kim et al., 2011; Kim et al., 2013). We also determined elevated content of LC3B in cells treated with AICAR (Figure 2).

In order to demonstrate that the response to AICAR required the activation of AMPK, luteal cells were pretreated with compound C, an inhibitor of AMPK, or transfected with dominant negative AMPK (Ad.dn.AMPK $\alpha$ 1) and then treated with AICAR. We confirmed enhanced phosphorylation of AMPK, RPTOR, ULK1 and BECN1 in cells treated with AICAR (Figure 3A). Pretreatment with compound C abolished AICAR-mediated effects on phosphorylation of AMPK, RPTOR, ULK1, and BECN1. In addition, transfection of cells with Ad. dn.AMPK $\alpha$ 1, which blocks catalytic activity of





**FIGURE 3 |** AMPK triggers post-translational modification of proteins involved in autophagy initiation. **(A)** Small luteal cells were pretreated with compound C (50 μM) for 1 h and then treated with AICAR (1 mM) for 15 min. Bar graphs and representative blots showing levels of phospho-AMPKα (Thr172), RPTOR (Ser792), ULK1 (Ser317), BECN1 (Ser93) and total BECN1. **(B)** Small luteal cells were infected with control adenovirus (Ad.CMV) or adenovirus expressing dominant negative AMPKα1 (Ad.dn.AMPKα1) for 48 h and then treated with AICAR (1 mM) for 15 min. Bar graphs and representative blots showing levels of phospho-RPTOR (Ser792), ULK1 (Ser317) and total AMPKα. Data are shown as a fold change and presented as means ± SEM from three-four separate experiments. Data were normalized to β-actin (ACTB). Statistical analysis was performed using one-way ANOVA test with post hoc Bonferroni test. Significant differences between treatments are indicated with asterisks \* and \*\* reflecting  $p < 0.05$  and  $p < 0.01$ .



AMPK, prevented phosphorylation of RPTOR at Ser792 in cells treated with AICAR (Figure 3B). Thus, the effects of AICAR on phosphorylation of autophagy related proteins RPTOR, ULK1 and BECN1 are mediated via activation of AMPK.

### Luteinizing Hormone Inhibits AMP-Activated Protein Kinase Activity but Stimulates Activity of Mechanistic Target of Rapamycin Kinase

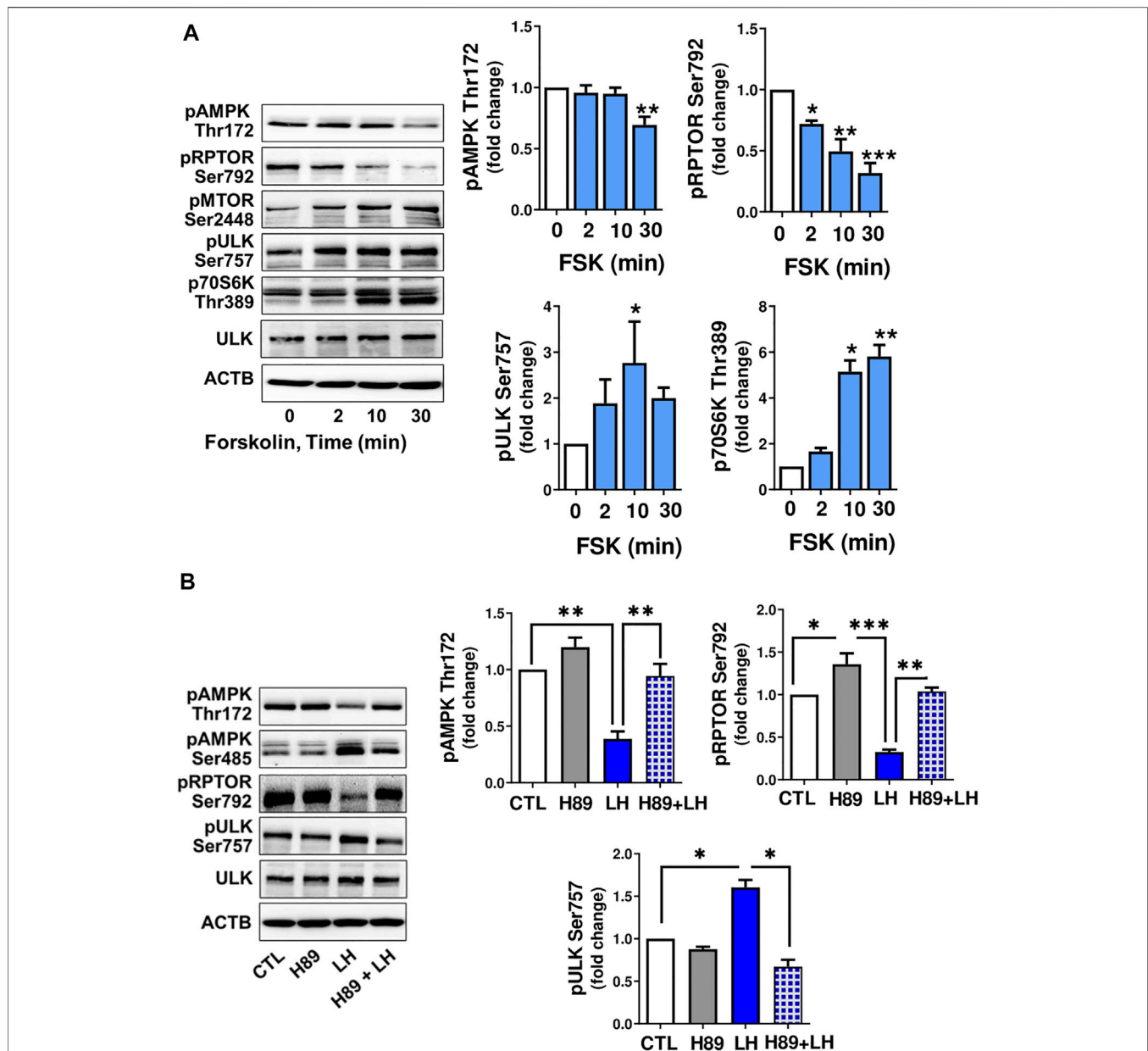
Previously, we reported that LH can inhibit the phosphorylation of AMPK $\alpha$  and activate MTOR in bovine luteal cells (Hou et al., 2010; Przygodzka et al., 2021). We performed studies to determine the effects of LH on phosphorylation of AMPK $\alpha$ , MTOR and their targets. Treatment with increasing concentrations of LH provokes concentration dependent effects of phosphorylation of AMPK $\alpha$ , RPTOR, MTOR, ULK1 and p70S6K (Figure 4). The lowest concentrations of LH decreased ( $p < 0.001$ ) activating phosphorylation of AMPK $\alpha$  (Thr172) by 70%. Simultaneously, the LH reduced ( $p < 0.001$ ) phosphorylation of the AMPK substrate RPTOR (Ser792) by 67%. Increasing concentrations of LH provoked concentration-dependent elevations ( $p < 0.01$ ) in the phosphorylation of MTOR (Ser2448) and two MTOR substrates, ULK1 (Ser757) and p70S6K

(Thr389) in small luteal cells (Figure 4) reflecting elevated activity of MTOR.

### Luteinizing Hormone/Protein Kinase A/Mechanistic Target of Rapamycin Kinase Signaling Affects Phosphorylation of Proteins Involved in Autophagy Initiation

Cyclic AMP/PKA signaling is the main pathway triggered by LH in luteal cells, thus small luteal cells were treated with forskolin (FSK; 10  $\mu$ M), an activator of adenylyl cyclase. Similar to LH, treatment with FSK reduced ( $p < 0.01$ ) phosphorylation of AMPK $\alpha$  (Thr172) and RPTOR (Ser792), a site phosphorylated by AMPK. Forskolin elevated ( $p < 0.05$ ) phosphorylation of AMPK (Ser485), a site specific for PKA and associated with reduced AMPK activity. FSK also enhanced phosphorylation of MTOR (Ser2448) and its substrates ULK1 (Ser757) and p70S6K (Thr389) (Figure 5A).

To determine whether PKA was involved in the response to LH, small luteal cells were pretreated with a PKA inhibitor, H89 (30  $\mu$ M), and then treated with LH for 10 min. Treatment with LH decreased ( $p < 0.01$ ) phosphorylation of AMPK $\alpha$  at Thr172 and RPTOR at Ser792, but elevated ( $p < 0.01$ ) phosphorylation of ULK1 at Ser757. In contrast, treatment with the PKA inhibitor



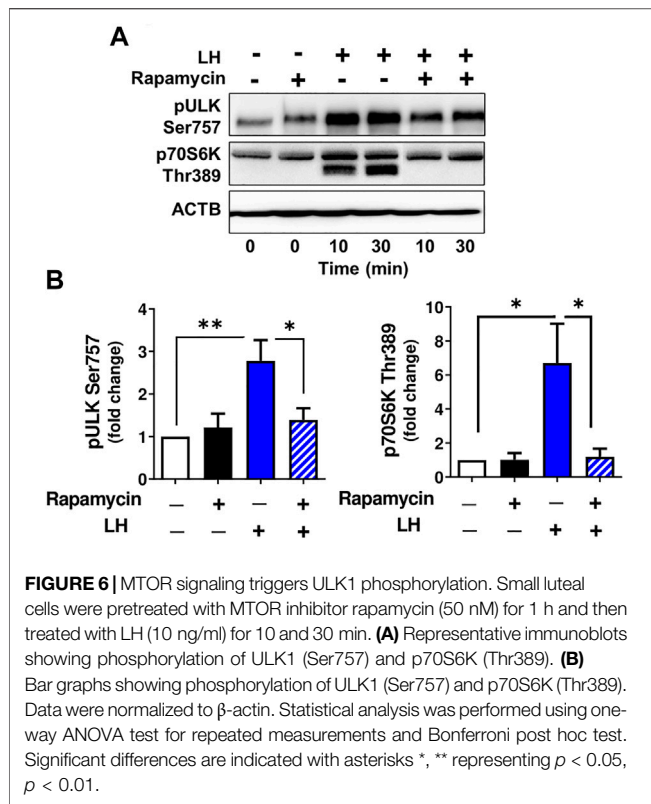
**FIGURE 5** | LH/PKA signaling affects phosphorylation of proteins involved in MTOR signaling or autophagy initiation. **(A)** Small luteal cells were treated with forskolin (FSK; 10  $\mu$ M) for 2–30 min. Western blot analysis was performed to evaluate phosphorylation of AMPK $\alpha$  (Thr172 and Ser485), RPTOR (Ser792), ULK1 (Ser757) and p70S6K (Thr389). **(B)** Small luteal cells were pretreated with PKA inhibitor H89 (30  $\mu$ M) for 45 min and then treated with LH (10 ng/ml) for 10 min. Representative blots present phosphorylation of AMPK $\alpha$  (Thr172 and Ser485), RPTOR (Ser792), ULK1 (Ser757), p70S6K (Thr389) and total ULK1. Bar graphs show average fold changes  $\pm$ SEM from 3 to 5 separate experiments. Data were normalized to  $\beta$ -actin. Statistical analysis was performed using one-way ANOVA test for repeated measurements and Bonferroni post hoc test. Significant differences are indicated with asterisks \*, \*\* and \*\*\* representing  $p < 0.05$ ,  $p < 0.01$  and  $p < 0.001$ .

H89 abrogated effects of LH on phosphorylation of AMPK $\alpha$ , RPTOR and ULK1 (**Figure 5B**) confirming LH/PKA mediated effects on AMPK $\alpha$  and MTOR as well their substrates in the luteal cells.

The activity of ULK1, a protein associated with autophagosome formation (Hara et al., 2008), can be inhibited by MTOR via phosphorylation at Ser757 (Kim et al., 2011). To confirm that LH/MTOR signaling triggers phosphorylation of ULK1 at Ser757 in the luteal cells, luteal cells were pretreated with

the MTOR inhibitor rapamycin (50 nM), and then treated with LH. Incubation in the presence of LH increased ( $p < 0.05$ ) phosphorylation of ULK1 (Ser757), but pretreatment with rapamycin prevented LH-mediated effects on phosphorylation of ULK1 (**Figures 6A,B**) confirming that LH stimulates ULK1 phosphorylation via MTOR signaling. Pretreatment with rapamycin also abolished phosphorylation of p70S6K (Thr389) confirming effective inhibition of MTOR activity.



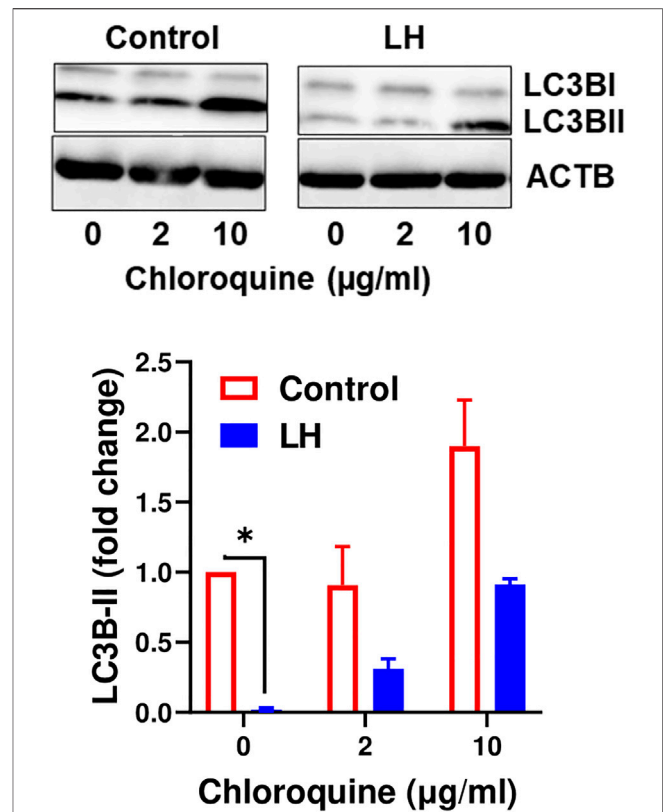


## Luteinizing Hormone Decreases Content of LC3B-II Indicating Inhibition of Autophagosome Formation

It is well established that LC3B serves as a specific marker for autophagosomes because the protein level of LC3B-II positively correlates to autophagosome production (Tanida et al., 2008). Because the current findings indicate that LH has an inhibitory effect on proteins involved in autophagy initiation, we tested the effect of LH on LC3B-II. Luteal cells were incubated in the presence and absence of chloroquine, an inhibitor of lysosome fusion with autophagosomes. Chloroquine elevated content of LC3B-II, which confirmed inhibition of lysosomal activity in luteal cells. In contrast, LH decreased ( $p < 0.05$ ) content of LC3B-II in comparison to untreated cells and cells pretreated with chloroquine (Figure 7), indicating that LH inhibits autophagosome formation.

## Activation of AMP-Activated Protein Kinase Increases Colocalization of Autophagosomes With Lysosomes

We conducted experiments to determine the effects of LH/PKA or AMPK signaling on the colocalization of mitochondria or lysosomes with autophagosomes in luteal cells. Luteal cells were treated with AICAR or LH for 3 h and stained to observe colocalization of lipid droplets or lysosomes with autophagosomes (Figure 8A). Cyto-ID, a recently developed cationic amphiphilic tracer dye with minimal staining of lysosomes,

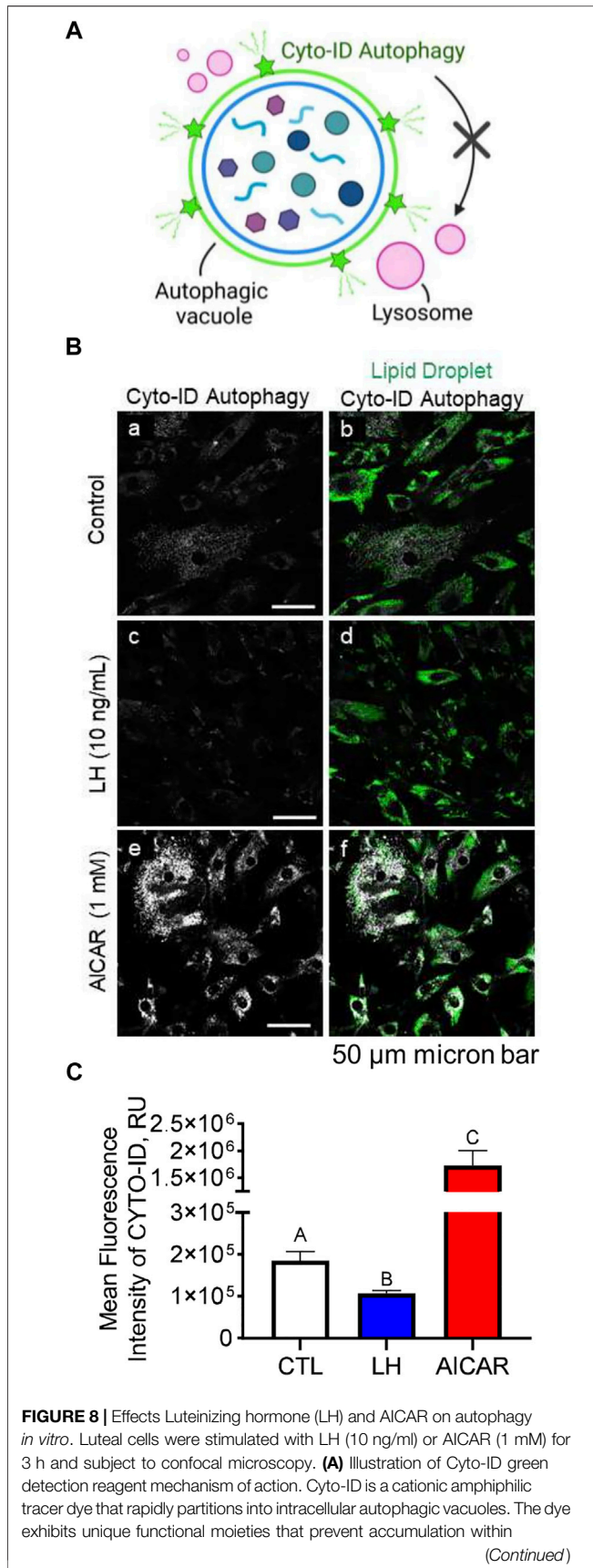


was used to label autophagic compartments (Figure 8A). Incubation in the presence of AICAR increased ( $p < 0.05$ ), whereas LH decreased ( $p < 0.05$ ), amount of autophagosomes in luteal cells as evidenced by Cyto-ID staining (Figures 8B,C). Little co-localization with luteal lipid droplets was observed.

LH did not affect co-localization of lysosomes or mitochondria with autophagosomes (not shown). In contrast, in cells treated with AICAR there was strong co-localization of lysosomes (lysotracker) and autophagosomes (Cyto-ID), but not mitochondria (Mitotracker) and autophagosomes (Cyto-ID), reflecting enhanced autophagy in cells incubated in the presence of the AMPK activator (Figure 9).

## Activation of AMPK Abolished Luteinizing Hormone-Mediated Phosphorylation of AMP-Activated Protein Kinase $\alpha$ , Regulatory Associated Protein of Mechanistic Target of Rapamycin Kinase, Unc-51-Like Kinase 1 and Beclin 1

Considering the opposite effects of AICAR and LH on proteins involved in autophagy initiation, we determined whether AMPK



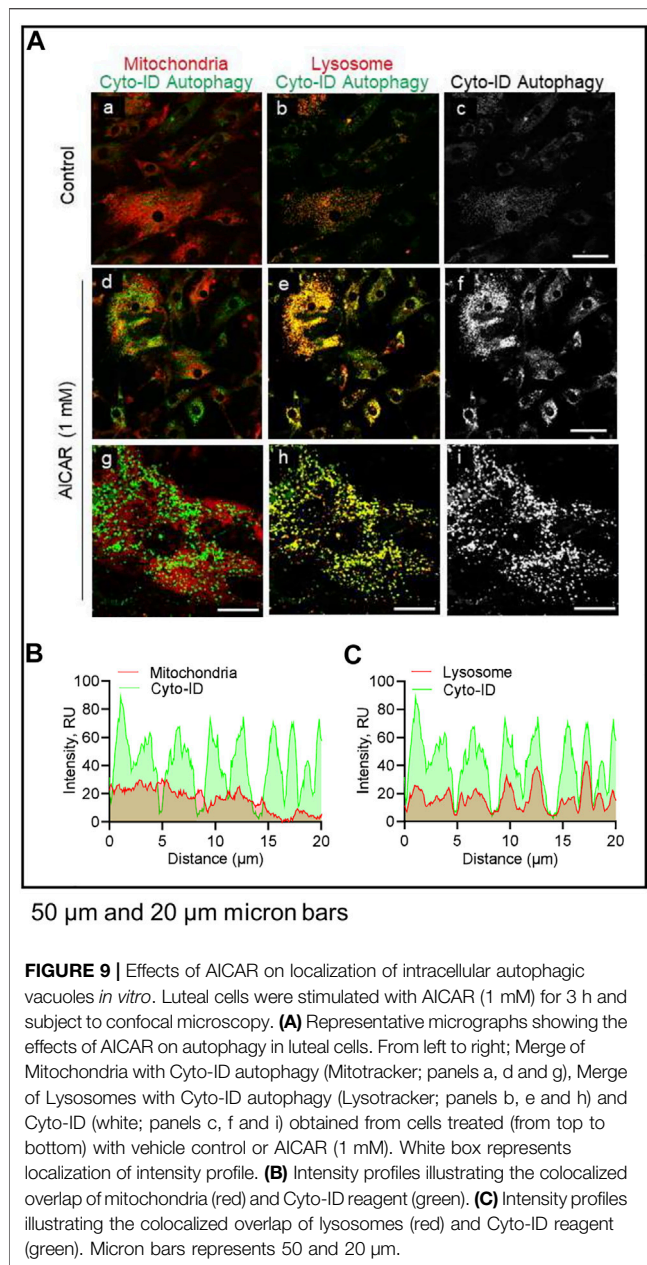
**FIGURE 8** | lysosomes, while labeling vacuoles associated with the autophagy pathway. **(B)** Representative micrographs showing the effects of LH or AICAR on autophagy in luteal cells. From left to right; Cyto-ID autophagy (white; panels a, c and e) and merge of Cyto-ID with Lipid droplets (Lipi-Blue; green; panels b, d and f) obtained from cells treated (from top to bottom) with vehicle control, LH (10 ng/ml) or AICAR (1 mM). **(C)** Quantitative analyses of the mean fluorescence intensity normalized to cell area (MFI; relative units; RU) of Cyto-ID green detection reagent. Open bars represent control cells; closed blue bar represents cells treated with LH; closed red bar represents cells treated with AICAR. <sup>ABC</sup> Differ significantly between treatment ( $p < 0.05$ ). Micron bar represents 50  $\mu$ m.

activation would alter the inhibitory effect of LH on activity of RPTOR and BECN1 (**Figure 10**). Primary bovine luteal cells were pretreated with AICAR for 1 h and then treated with LH for 4 h. Treatment with AICAR elevated ( $p < 0.05$ ) phosphorylation on AMPK $\alpha$ , RPTOR, ULK1 and BECN1. Additionally, pretreatment with AICAR abolished LH-mediated effects on AMPK $\alpha$  (Thr172), RPTOR (Ser792), ULK1 (Ser317), and BECN1 (Ser93) (**Figures 10A,B**) demonstrating that LH and AMPK mediate opposite effects on proteins involved in autophagy initiation.

## DISCUSSION

The present study provides new insight into the signaling pathways regulating autophagy in the highly steroidogenic cells of the corpus luteum. *In vivo* studies revealed evidence for induction of autophagy in the corpus luteum after injection of a luteolytic concentration of PGF2 $\alpha$ , e.g., the rapid phosphorylation of AMPK $\alpha$  and elevation of the autophagosome marker LC3B. *In vitro* studies supported previous reports that PGF2 $\alpha$  triggers AMPK via the CAMKK2 pathway in luteal cells (Bowdridge et al., 2015). The present study demonstrated stimulatory effects of AMPK on autophagosome induction (LC3B-II and Cyto-ID staining) and posttranslational modifications of proteins required for MTOR inactivation (RPTOR) and autophagy initiation ULK1 and BECN1. Conversely, LH via PKA/MTOR signaling mediated inhibitory effects on autophagy initiation and reduced LC3B-II and Cyto-ID staining, indicators of diminished autophagosome formation in luteal cells. This study reveals that LH/PKA/MTOR signaling and PGF2 $\alpha$ /Ca<sup>2+</sup>/AMPK signaling exert opposing actions on autophagy and phosphorylation of proteins crucial for autophagy initiation in luteal cells.

AMPK is a heterotrimeric protein that shifts cellular metabolism to catabolism when ATP levels are low (high AMP:ATP ratio). AMP binds to the catalytic subunit and prevents deactivation by phosphatases and may also recruit upstream kinases that activate AMPK. AMPK is activated by kinases such as serine/threonine kinase 11 (commonly called LKB1) and CAMKK2, which phosphorylate AMPK at Thr172, and it is conversely deactivated by PKA-mediated phosphorylation at Ser485, as well as phosphatases (Herzig and Shaw 2018). Here, we reported that luteolytic PGF2 $\alpha$  increased AMPK $\alpha$  phosphorylation at Thr172 in the corpus

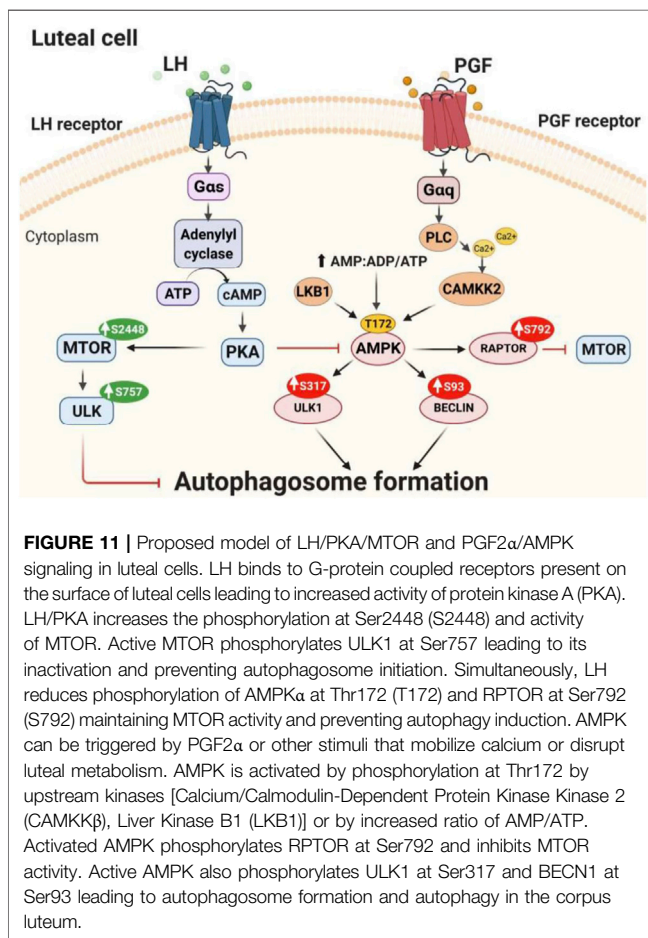
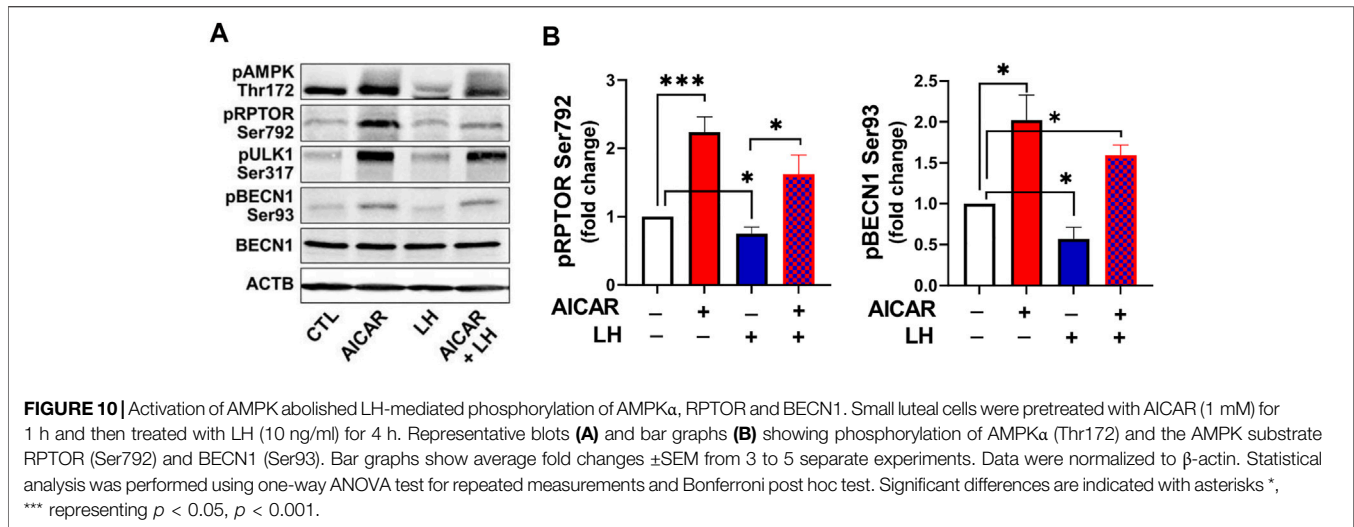


luteum at the time of regression. In cultured luteal cells, PGF2 $\alpha$ -induced AMPK activation was ameliorated with CAMKK2 inhibitor, STO-609, which is in agreement with a previous report in bovine luteal cells (Bowdridge et al., 2015). One of the hallmarks of autophagy is cleavage of LC3 into LC3-I and LC3-II (Tanida et al., 2008). In the present study, we demonstrated increased content of luteal LC3B protein in response to PGF2 $\alpha$  treatment *in vivo*. Previous studies reported that LC3B protein increased in late-stage bovine corpora lutea (Aboelenain et al., 2015), suggesting that autophagy occurs during induced as well as physiological luteal regression. Similar results have been demonstrated in the corpus luteum of rat and goat (Choi et al., 2011; Grzesiak et al., 2018; Wen et al., 2020). Although autophagy is considered a pro-survival process; we

demonstrated that autophagy-related signaling is upregulated during luteolysis, a process that is accompanied by cellular death (Song et al., 2018; Denton and Kumar 2019). Choi et al. (Choi et al., 2011) demonstrated that after 24 h of PGF2 $\alpha$  treatment, both LC3B and caspase 3 are increased in cultured rat luteal cells. Dysregulation of autophagy can result in cellular death, so it is possible that these processes are connected in the context of the regressing corpus luteum; however, more mechanistic studies are needed.

The protein kinases, AMPK and MTOR, regulate activity of autophagy related proteins in opposite ways (Yang and Klionsky 2009). AMPK can affect autophagy via inhibitory effects on mTORC1 activity by phosphorylation of RPTOR, one of the proteins in the MTOR1 complex. Phosphorylation of RPTOR at Ser792 generates a docking site for inhibitory 14-3-3 proteins and is required for AMPK-mediated inhibition of MTOR1 (Gwinn et al., 2008). In the present study, treatment with AICAR rapidly phosphorylated AMPK $\alpha$  (Thr172), at site required for AMPK activity, and increased phosphorylation of RPTOR at Ser792, a site crucial for MTOR1 inactivation. Pretreatment with compound C, an inhibitor of AMPK, or transfection with dominant negative AMPK $\alpha$ 1 abolished stimulatory effects of AICAR on posttranslational modifications of RPTOR confirming that the actions of AICAR in luteal cells were specific for AMPK. Therefore, it seems likely that inhibition of MTOR activity is one step by which activation of AMPK in luteal cells leads to induction of autophagy. The importance of MTOR in the regulation of autophagy in the bovine corpus luteum was suggested previously by Aboelenain and coworkers, who determined decreased MTOR expression and elevated levels of genes related to autophagy in the bovine corpus luteum during regression (Aboelenain et al., 2015).

Autophagy is a dynamically progressing process, which includes initiation, expansion, formation of autophagosomes, and fusion of autophagosomes to the lysosome. The ULK1/ATG13/FIP200 complex is a prominent initiator of autophagy in mammalian cells (Chan et al., 2009). As a serine/threonine kinase, ULK1 regulates autophagy by phosphorylation of its substrates such as BECN1, vacuolar protein sorting 34 (VPS34), autophagy related protein 13 (ATG13) and ATG101. ULK1 can be phosphorylated by AMPK at Ser317 or Ser555 to promote autophagosome formation (Kim et al., 2011). AMPK also contributes to autophagy induction by the phosphorylation of BECN1 at Ser90 or Ser93, a protein belonging to the class 3 phosphatidylinositol 3-kinase (PI3K) complex which is crucial for autophagy initiation (Chan et al., 2009). In the present study, activation of AMPK with AICAR increased phosphorylation of ULK1 Ser317 and BECN1 Ser93, whereas specific inhibitors of AMPK abolished the stimulatory effects of AICAR on phosphorylation of both proteins. Treatment with AICAR also increased content of LC3B-II, increased staining for autophagosomes (Cyto-ID), and stimulated colocalization of autophagosomes with lysosomes in luteal cells. Thus, we believe that AMPK can induce autophagy in the luteal cells by multiple routes including posttranslational modification of proteins belonging to two independent protein complexes fundamental for autophagy initiation.



The MTOR1 complex (MTORC1) comprises MTOR, mLST8 (or G $\beta$ L), PRAS40, and RPTOR. Previous studies demonstrate that gonadotropins can activate MTOR (Alam et al., 2004; Hou et al., 2010). In this report, we confirm previous reports that LH and PKA activators stimulate MTOR and two known MTOR1

substrates. We observed that treatment with LH enhances phosphorylation of MTOR at Ser2448 and stimulation of the phosphorylation of p70S6K and ULK1. Inhibition of PKA abolished stimulatory effects of LH on p70S6K and ULK1, confirming that LH/PKA signaling can evoke MTOR1 activity in luteal cells (Hou et al., 2010). In the present study, LH stimulatory effects on phosphorylation of ULK1 at Ser757 were abrogated by pretreatment with rapamycin, an inhibitor of MTOR1, confirming that the effects on p70S6K and ULK1 were specific for MTOR1. Phosphorylation of ULK1 at Ser757 disrupts interaction between ULK1 and AMPK preventing autophagy initiation (Kim et al., 2011). Furthermore, we observed that LH/PKA signaling inhibited AMPK and RPTOR, which could contribute to enhanced MTORC1 activity and reduced autophagy. In fact, we observed that LH decreased basal and chloroquine stimulated content of LC3B-II as well as CYTO-ID staining of autophagosomes in luteal cells. Furthermore, treatment with dcAMP reduced number of autophagic vacuoles and phosphorylation of LC3B, required for autophagosomes formation in neuronal cells (Cherra et al., 2010). Thus, multiple molecules are activated in luteal cells in response to LH/PKA/MTOR signaling that individually or collectively contribute to the inhibition of autophagy. Further experiments are required to support the relative roles of molecules in luteal formation, maintenance and regression.

In summary, the findings support the conclusion that LH/PKA/MTOR signaling and PGF $2\alpha$ /Ca $^{2+}$ /AMPK signaling mediate opposite and dynamic posttranslational modifications of proteins crucial for autophagy initiation in bovine luteal cells (Figure 11). Activation of AMPK during luteolysis rapidly induces posttranslational changes in RPTOR, ULK1 and BECN1 that inactivate MTOR and initiate autophagy. Conversely, LH via cAMP/PKA signaling reduces activating posttranslational modifications of AMPK, while stimulating the activity of MTOR. At the same time, LH/cAMP/PKA signaling phosphorylates ULK1 at a site required for inactivation, which results in decreased content of autophagosomes in bovine luteal cells. These findings extend

current knowledge on the role of PKA and AMPK signaling in highly steroidogenic luteal cells.

## DATA AVAILABILITY STATEMENT

The original contributions presented in the study are included in the article/**Supplementary Material**, further inquiries can be directed to the corresponding author.

## ETHICS STATEMENT

The animal study was reviewed and approved by IACUC at the University of Nebraska-Lincoln.

## AUTHOR CONTRIBUTIONS

EP: experimental design and work, data analysis, final writing, editing; CM: experimental work, writing material and methods, manuscript editing; MP: experimental work, confocal microscope analysis, data analysis, manuscript editing; GL: performed experiments; JW and AC: experimental design, conceptual advice, editing; JD: experimental design, conceptual advice, data analysis, writing and editing.

## REFERENCES

- Aboelenain, M., Kawahara, M., Balboula, A. Z., Montasser, A. E.-m., Zaabel, S. M., Okuda, K., et al. (2015). Status of Autophagy, Lysosome Activity and Apoptosis during Corpus Luteum Regression in Cattle. *J. Reprod. Dev.* 61, 229–236. doi:10.1262/jrd.2014-135
- Alam, H., Maizels, E. T., Park, Y., Ghaey, S., Feiger, Z. J., Chandel, N. S., et al. (2004). Follicle-stimulating Hormone Activation of Hypoxia-Inducible Factor-1 by the Phosphatidylinositol 3-kinase/AKT/Ras Homolog Enriched in Brain (Rheb)/mammalian Target of Rapamycin (mTOR) Pathway Is Necessary for Induction of Select Protein Markers of Follicular Differentiation. *J. Biol. Chem.* 279, 19431–19440. doi:10.1074/jbc.m401235200
- Arvisais, E., Hou, X., Wyatt, T. A., Shirasuna, K., Bollwein, H., Miyamoto, A., et al. (2010). Prostaglandin F<sub>2α</sub> Represses IGF-I-Stimulated IRS1/Phosphatidylinositol-3-Kinase/AKT Signaling in the Corpus Luteum: Role of ERK and P70 Ribosomal S6 Kinase. *Mol. Endocrinol.* 24, 632–643. doi:10.1210/me.2009-0312
- Bennegård, B., Hahlin, M., Wennberg, E., and Norém, H. (1991). Local Luteolytic Effect of Prostaglandin F<sub>2α</sub> in the Human Corpus luteum. Presented at the 7th World Congress on Human Reproduction, Helsinki, Finland, June 27, 1990. *Fertil. Steril.* 56, 1070–1076. doi:10.1016/s0015-0282(16)54719-0
- Berisha, B., and Schams, D. (2005). Ovarian Function in Ruminants. *Domest. Anim. Endocrinol.* 29, 305–317. doi:10.1016/j.domaniend.2005.02.035
- Bowdridge, E. C., Goravanahally, M. P., Inskeep, E. K., and Flores, J. A. (2015). Activation of Adenosine Monophosphate-Activated Protein Kinase Is an Additional Mechanism that Participates in Mediating Inhibitory Actions of Prostaglandin F<sub>2α</sub> in Mature, but Not Developing, Bovine Corpora Lutea. *Biol. Reprod.* 93, 7. doi:10.1095/biolreprod.115.129411
- Chan, E. Y. W., Longatti, A., McKnight, N. C., and Tooze, S. A. (2009). Kinase-inactivated ULK Proteins Inhibit Autophagy via Their Conserved C-Terminal Domains Using an Atg13-independent Mechanism. *Mol. Cell Biol.* 29, 157–171. doi:10.1128/mcb.01082-08
- Chen, D., Fong, H. W., and Davis, J. S. (2001). Induction of C-Fos and C-jun Messenger Ribonucleic Acid Expression by Prostaglandin F<sub>2α</sub> Is

## FUNDING

This project was supported by NIH grants R01 HD087402 and R01 HD092263 to JD, P01 AG029531, NIH (NIGMS) COBRE IDeA award NIH P20GM104320 (Nebraska Center for Prevention of Obesity Diseases), USDA NIFA Grants 2017-67015-26450 to JD and 2018-08068 to MP, the Department of Veterans Affairs I01BX004272 to JSD and BX004911 to MRP, and The Olson Center for Women's Health. JD is the recipient of VA Senior Research Career Scientific Award (IK6BX005797).

## ACKNOWLEDGMENTS

The authors thank Janice Taylor and James Talaska at the University of Nebraska Medical Center, Advanced Microscopy Core Facility for their assistance with microscopy. The use of microscope was supported by Center for Cellular Signaling CoBRE-P30GM106397 from the National Health Institutes.

## SUPPLEMENTARY MATERIAL

The Supplementary Material for this article can be found online at: <https://www.frontiersin.org/articles/10.3389/fcell.2021.723563/full#supplementary-material>

Mediated by a Protein Kinase C-dependent Extracellular Signal-Regulated Kinase Mitogen-Activated Protein Kinase Pathway in Bovine Luteal Cells. The Data Was Partially Presented at the XI Ovarian Workshop as Abstract 7, July 26-30, 1996, London, Ontario, Canada. *Endocrinology* 142, 887–895. doi:10.1210/endo.142.2.7938

- Cherra, S. J., 3rd, Kulich, S. M., UechiBalasubramani, G. M., Balasubramani, M., Day, J. B. W., and Chu, C. T. (2010). Regulation of the Autophagy Protein LC3 by Phosphorylation. *J. Cell Biol.* 190, 533–539. doi:10.1083/jcb.201002108
- Choi, J., Jo, M., Lee, E., and Choi, D. (2011). The Role of Autophagy in Corpus Luteum Regression in the Rat. *Biol. Reprod.* 85, 465–472. doi:10.1095/biolreprod.111.091314
- Davis, J. S., and Rueda, B. R. (2002). The Corpus Luteum: an Ovarian Structure with Maternal Instincts and Suicidal Tendencies. *Front. Biosci.* 7, d1949–78. doi:10.2741/davis1
- Davis, J. S., Weakland, L. L., Weiland, D. A., Farese, R. V., and West, L. A. (1987). Prostaglandin F<sub>2α</sub> Stimulates Phosphatidylinositol 4,5-bisphosphate Hydrolysis and Mobilizes Intracellular Ca<sup>2+</sup> in Bovine Luteal Cells. *Proc. Natl. Acad. Sci.* 84, 3728–3732. doi:10.1073/pnas.84.11.3728
- Denton, D., and Kumar, S. (2019). Autophagy-Dependent Cell Death. *Cell Death Differ.* 26, 605–616. doi:10.1038/s41418-018-0252-y
- Egan, D., Kim, J., Shaw, R. J., and Guan, K.-L. (2011). The Autophagy Initiating Kinase ULK1 Is Regulated via Opposing Phosphorylation by AMPK and mTOR. *Autophagy* 7, 643–644. doi:10.4161/auto.7.6.15123
- Escobar, M. L., Echeverría, O. M., Ortíz, R., and Vázquez-Nin, G. H. (2008). Combined Apoptosis and Autophagy, the Process that Eliminates the Oocytes of Atretic Follicles in Immature Rats. *Apoptosis* 13, 1253–1266. doi:10.1007/s10495-008-0248-z
- Grzesiak, M., Michalik, A., Rak, A., Knapczyk-Stwora, K., and Pieczonka, A. (2018). The Expression of Autophagy-Related Proteins within the Corpus Luteum Lifespan in Pigs. *Domest. Anim. Endocrinol.* 64, 9–16. doi:10.1016/j.domaniend.2018.03.004
- Guo, S., Liang, Y., Murphy, S. F., Huang, A., Shen, H., Kelly, D. F., et al. (2015). A Rapid and High Content Assay that Measures cyto-ID-stained Autophagic Compartments and Estimates Autophagy Flux with Potential Clinical Applications. *Autophagy* 11, 560–572. doi:10.1080/15548627.2015.1017181

- Gwinn, D. M., Shackelford, D. B., Egan, D. F., Mihaylova, M. M., Mery, A., Vasquez, D. S., et al. (2008). AMPK Phosphorylation of Raptor Mediates a Metabolic Checkpoint. *Mol. Cell* 30, 214–226. doi:10.1016/j.molcel.2008.03.003
- Hara, T., Takamura, A., Kishi, C., Iemura, S.-i., Natsume, T., Guan, J.-L., et al. (2008). FIP200, a ULK-Interacting Protein, Is Required for Autophagosome Formation in Mammalian Cells. *J. Cell Biol.* 181, 497–510. doi:10.1083/jcb.2007.12.064
- He, L., Zhang, J., Zhao, J., Ma, N., Kim, S. W., Qiao, S., et al. (2018). Autophagy: The Last Defense against Cellular Nutritional Stress. *Adv. Nutr.* 9, 493–504. doi:10.1093/advances/nmy011
- Herzig, S., and Shaw, R. J. (2018). AMPK: Guardian of Metabolism and Mitochondrial Homeostasis. *Nat. Rev. Mol. Cell Biol.* 19, 121–135. doi:10.1038/nrm.2017.95
- Hou, X., Arvais, E. W., and Davis, J. S. (2010). Luteinizing Hormone Stimulates Mammalian Target of Rapamycin Signaling in Bovine Luteal Cells via Pathways Independent of AKT and Mitogen-Activated Protein Kinase: Modulation of Glycogen Synthase Kinase 3 and AMP-Activated Protein Kinase. *Endocrinology* 151, 2846–2857. doi:10.1210/en.2009-1032
- Juengel, J. L., Garverick, H. A., Johnson, A. L., Youngquist, R. S., and Smith, M. F. (1993). Apoptosis during Luteal Regression in Cattle. *Endocrinology* 132, 249–254. doi:10.1210/endo.132.1.8419126
- Kim, J., Kundu, M., Viollet, B., and Guan, K.-L. (2011). AMPK and mTOR Regulate Autophagy through Direct Phosphorylation of Ulk1. *Nat. Cell Biol.* 13, 132–141. doi:10.1038/ncb2152
- Kim, J., Kim, Y. C., Fang, C., Russell, R. C., Kim, J. H., Fan, W., et al. (2013). Differential Regulation of Distinct Vps34 Complexes by AMPK in Nutrient Stress and Autophagy. *Cell* 152, 290–303. doi:10.1016/j.cell.2012.12.016
- Kurusu, S., Sapirstein, A., and Bonventre, J. V. (2012). Group IVA Phospholipase A 2 Optimizes Ovulation and Fertilization in Rodents through Induction of and Metabolic Coupling with Prostaglandin Endoperoxide Synthase 2. *FASEB J.* 26, 3800–3810. doi:10.1096/fj.12-203968
- McCann, T. J., and Flint, A. P. F. (1993). Use of Pertussis Toxin to Investigate the Mechanism of Action of Prostaglandin F2 $\alpha$  on the Corpus Luteum in Sheep. *J. Mol. Endocrinol.* 10, 79–85. doi:10.1677/jme.0.0100079
- McCracken, J. A., Carlson, J. C., Glew, M. E., Goding, J. R., Baird, D. T., Gr en, K., et al. (1972). Prostaglandin F2 $\alpha$  Identified as a Luteolytic Hormone in Sheep. *Nat. New Biol.* 238, 129–134. doi:10.1038/newbio238129a0
- McCracken, J. A., Custer, E. E., and Lamsa, J. C. (1999). Luteolysis: a Neuroendocrine-Mediated Event. *Physiol. Rev.* 79, 263–323. doi:10.1152/physrev.1999.79.2.263
- Meng, L., Jan, S. Z., Hamer, G., van Pelt, A. M., van der Stelt, I., Keijzer, J., et al. (2018). Preantral Follicular Atresia Occurs Mainly through Autophagy, while Antral Follicles Degrade Mostly through Apoptosis. *Biol. Reprod.* 99, 853–863. doi:10.1093/biolre/i0y116
- Park, C. J., Lin, P.-C., Zhou, S., Barakat, R., Bashir, S. T., Choi, J. M., et al. (2020). Progesterone Receptor Serves the Ovary as a Trigger of Ovulation and a Terminator of Inflammation. *Cell Rep.* 31, 107496. doi:10.1016/j.celrep.2020.03.060
- Parzych, K. R., and Klionsky, D. J. (2014). An Overview of Autophagy: Morphology, Mechanism, and Regulation. *Antioxid. Redox Signaling* 20, 460–473. doi:10.1089/ars.2013.5371
- Pate, J. L. (2020). Roadmap to Pregnancy during the Period of Maternal Recognition in the Cow: Changes within the Corpus Luteum Associated with Luteal rescue. *Theriogenology* 150, 294–301. doi:10.1016/j.theriogenology.2020.01.074
- Pereira, M. M., Mainigi, M., and Strauss, J. F., III (2021). Secretory Products of the Corpus Luteum and Preeclampsia. *Hum. Reprod. Update* 27, 651–672. doi:10.1093/humupd/dmab003
- Plewes, M. R., Krause, C., Talbott, H. A., Przygodzka, E., Wood, J. R., Cupp, A. S., et al. (2020). Trafficking of Cholesterol from Lipid Droplets to Mitochondria in Bovine Luteal Cells: Acute Control of Progesterone Synthesis. *Faseb J* 31, 10731–10750. doi:10.1096/fj.202000671r
- Przygodzka, E., Hou, X., Zhang, P., Plewes, M. R., Franco, R., and Davis, J. S. (2021). PKA and AMPK Signaling Pathways Differentially Regulate Luteal Steroidogenesis. *Endocrinology* 162, bqab015. doi:10.1210/endo/bqab015
- Rueda, B. R., Tilly, K. I., Botros, I. W., Jolly, P. D., Hansen, T. R., Hoyer, P. B., et al. (1997). Increased Bax and Interleukin-1 $\beta$ -Converting Enzyme Messenger Ribonucleic Acid Levels Coincide with Apoptosis in the Bovine Corpus Luteum during Structural Regression. *Biol. Reprod.* 56, 186–193. doi:10.1095/biolreprod56.1.186
- Song, X., Zhu, S., Chen, P., Hou, W., Wen, Q., Liu, J., et al. (2018). AMPK-mediated BECN1 Phosphorylation Promotes Ferroptosis by Directly Blocking System Xc- Activity. *Curr. Biol.* 28, 2388–2399.e5. doi:10.1016/j.cub.2018.05.094
- Summers, A. F., Pohlmeier, W. E., Sargent, K. M., Cole, B. D., Vinton, R. J., Kurz, S. G., et al. (2014). Altered Theca and Cumulus Oocyte Complex Gene Expression, Follicular Arrest and Reduced Fertility in Cows with Dominant Follicle Follicular Fluid Androgen Excess. *PLoS One* 9, e110683. doi:10.1371/journal.pone.0110683
- Talbott, H., Hou, X., Qiu, F., Zhang, P., Guda, C., Yu, F., et al. (2017). Early Transcriptome Responses of the Bovine Midcycle Corpus Luteum to Prostaglandin F2 $\alpha$  Includes Cytokine Signaling. *Mol. Cell Endocrinol.* 452, 93–109. doi:10.1016/j.mce.2017.05.018
- Talbott, H. A., Plewes, M. R., Krause, C., Hou, X., Zhang, P., Rizzo, W. B., et al. (2020). Formation and Characterization of Lipid Droplets of the Bovine Corpus Luteum. *Sci. Rep.* 10, 11287. doi:10.1038/s41598-020-68091-2
- Tang, Z., Zhang, Z., Zhang, H., Wang, Y., Zhang, Y., Zhao, J., et al. (2019). Autophagy Attenuation Hampers Progesterone Synthesis during the Development of Pregnant Corpus Luteum. *Cells* 9, 71. doi:10.3390/cells9010071
- Tang, Z., Zhang, Z., Lin, Q., Xu, R., Chen, J., Wang, Y., et al. (2020). HIF-1 $\alpha$ /BNIP3-Mediated Autophagy Contributes to the Luteinization of Granulosa Cells during the Formation of Corpus Luteum. *Front Cell Dev Biol* 8, 619924. doi:10.3389/fcell.2020.619924
- Tanida, I., Ueno, T., and Kominami, E. (2008). LC3 and Autophagy. *Methods Mol. Biol.* 445, 77–88. doi:10.1007/978-1-59745-157-4\_4
- Taurin, S., Sandbo, N., Yau, D. M., Sethakorn, N., and Dulin, N. O. (2008). Phosphorylation of  $\beta$ -catenin by PKA Promotes ATP-Induced Proliferation of Vascular Smooth Muscle Cells. *Am. J. Physiol. Cell Physiol.* 294, C1169–C1174. doi:10.1152/ajpcell.00096.2008
- Ullah, S., Zhang, M., Yu, H., Mustafa, S., Shafiq, M., Wei, Q., et al. (2019). Heat Exposure Affected the Reproductive Performance of Pregnant Mice: Enhancement of Autophagy and Alteration of Subcellular Structure in the Corpus Luteum. *Reprod. Biol.* 19, 261–269. doi:10.1016/j.repbio.2019.06.006
- Wang, Y., and Zhang, H. (2019). Regulation of Autophagy by mTOR Signaling Pathway. *Adv. Exp. Med. Biol.* 1206, 67–83. doi:10.1007/978-981-15-0602-4\_3
- Wen, X., Liu, L., Li, S., Lin, P., Chen, H., Zhou, D., et al. (2020). Prostaglandin F2 $\alpha$  Induces Goat Corpus Luteum Regression via Endoplasmic Reticulum Stress and Autophagy. *Front. Physiol.* 11, 868. doi:10.3389/fphys.2020.00868
- Yang, Z., and Klionsky, D. J. (2009). An Overview of the Molecular Mechanism of Autophagy. *Curr. Top. Microbiol. Immunol.* 335, 1–32. doi:10.1007/978-3-642-00302-8\_1
- Zhang, J., Liu, Y., Yao, W., Li, Q., Liu, H., and Pan, Z. (2018). Initiation of Follicular Atresia: Gene Networks during Early Atresia in Pig Ovaries. *Reproduction* 156, 23–33. doi:10.1530/rep-18-0058

**Conflict of Interest:** The authors declare that the research was conducted in the absence of any commercial or financial relationships that could be construed as a potential conflict of interest.

**Publisher's Note:** All claims expressed in this article are solely those of the authors and do not necessarily represent those of their affiliated organizations, or those of the publisher, the editors and the reviewers. Any product that may be evaluated in this article, or claim that may be made by its manufacturer, is not guaranteed or endorsed by the publisher.

Copyright © 2021 Przygodzka, Monaco, Plewes, Li, Wood, Cupp and Davis. This is an open-access article distributed under the terms of the Creative Commons Attribution License (CC BY). The use, distribution or reproduction in other forums is permitted, provided the original author(s) and the copyright owner(s) are credited and that the original publication in this journal is cited, in accordance with accepted academic practice. No use, distribution or reproduction is permitted which does not comply with these terms.