



Targeted Reducing of Tauopathy Alleviates Epileptic Seizures and Spatial Memory Impairment in an Optogenetically Inducible Mouse Model of Epilepsy

Yang Gao¹, Jie Zheng^{1,2}, Tao Jiang¹, Guilin Pi¹, Fei Sun¹, Rui Xiong¹, Weijin Wang¹, Dongqin Wu¹, Shihong Li¹, Huiyang Lei¹, Huiling Yu¹, Qiuzhi Zhou¹, Ying Yang¹, Huaqiu Zhang³ and Jian-Zhi Wang^{1,4*}

OPEN ACCESS

Edited by:

Peng Lei,
West China Hospital, Sichuan
University, China

Reviewed by:

Fei Liu,
New York State Institute for Basic
Research in Developmental
Disabilities, United States
Xin Wang,
Xiamen University, China
Xiongwei Zhu,
Case Western Reserve University,
United States

*Correspondence:

Jian-Zhi Wang
wangjz@mail.hust.edu.cn

Specialty section:

This article was submitted to
Molecular Medicine,
a section of the journal
Frontiers in Cell and Developmental
Biology

Received: 26 November 2020

Accepted: 29 December 2020

Published: 18 February 2021

Citation:

Gao Y, Zheng J, Jiang T, Pi G, Sun F, Xiong R, Wang W, Wu D, Li S, Lei H, Yu H, Zhou Q, Yang Y, Zhang H and Wang J-Z (2021) Targeted Reducing of Tauopathy Alleviates Epileptic Seizures and Spatial Memory Impairment in an Optogenetically Inducible Mouse Model of Epilepsy. *Front. Cell Dev. Biol.* 8:633725. doi: 10.3389/fcell.2020.633725

¹ Department of Pathophysiology, Key Laboratory of Ministry of Education for Neurological Disorders, School of Basic Medicine, Tongji Medical College, Huazhong University of Science and Technology, Wuhan, China, ² Department of Pharmacology, Key Laboratory of Basic Pharmacology of Ministry of Education and Joint International Research Laboratory of Ethnomedicine of Ministry of Education, Zunyi Medical University, Zunyi, China, ³ Department of Neurosurgery, Key Laboratory of Ministry of Education for Neurological Disorders, Tongji Hospital, Tongji Medical College, Huazhong University of Science and Technology, Wuhan, China, ⁴ Co-innovation Center of Neuroregeneration, Nantong University, Nantong, China

Intracellular deposition of hyperphosphorylated tau has been reported in the brain of epilepsy patients, but its contribution to epileptic seizures and the association with spatial cognitive functions remain unclear. Here, we found that repeated optogenetic stimulation of the excitatory neurons in ventral hippocampal CA1 subset could induce a controllable epileptic seizure in mice. Simultaneously, the mice showed spatial learning and memory deficits with a prominently elevated total tau and phospho-tau levels in the brain. Importantly, selective facilitating tau degradation by using a novel designed proteolysis-targeting chimera named C4 could effectively ameliorate the epileptic seizures with remarkable restoration of neuronal firing activities and improvement of spatial learning and memory functions. These results confirm that abnormal tau accumulation plays a pivotal role in the epileptic seizures and the epilepsy-associated spatial memory impairments, which provides new molecular target for the therapeutics.

Keywords: epilepsy, cognitive impairment, tau hyperphosphorylation, optogenetics, mouse model

INTRODUCTION

Epilepsy is characterized by spontaneously recurring epileptic seizures, with cognitive decline generally occurring as a major comorbidity (So and Penry, 1981; Breuer et al., 2016; Witt and Helmstaedter, 2017). The degree of the epilepsy-induced cognitive impairments varies, depending on the age at seizure onset; location, frequency, and duration of epilepsy; and the history of antiepileptic medication (Avanzini et al., 2013; Witt and Helmstaedter, 2017; Feldman et al., 2018), with the mechanisms not yet fully understood, to date. As a result, there is currently no targeted therapeutic strategy to prevent or halt the development the cognitive decline in epilepsy patients (Paudel et al., 2019).

Hyperphosphorylation and intracellular accumulation of tau protein dysregulate microtubule assembly and aggravate the formation of neurofibrillary tangles, thus remodeling neuronal synapses and exacerbating cognitive decline in a collection of diseases named tauopathies, including Alzheimer disease (AD; Wang et al., 2014; Wang and Mandelkew, 2016; Yang and Wang, 2018). Recent studies also revealed prominent accumulation of hyperphosphorylated tau in the brain of temporal lobe epilepsy patients (Tai et al., 2016; Smith et al., 2019). Given that epilepsy and early stage AD share many neurological characters and psychiatric symptoms (Kanner, 2009; Cheng et al., 2015; Zarea et al., 2016), we wonder whether tau pathology also contributes to the cognitive deficits in epilepsy. Furthermore, although knockdown or knockout of tau proteins have been evidenced to significantly attenuate neuronal network hyperexcitability in the brain of mice with epilepsy (DeVos et al., 2013; Holth et al., 2013), whether and how the abnormal accumulation of hyperphosphorylated tau dysregulates neuronal firing activities thus to affect epileptic seizures in epilepsy still remain to be elucidated.

The current epileptic animal models, produced by systemic or focal injection of convulsant agents such as kainic acid or pilocarpine, always show more extensive neuronal damages than those observed in the clinical patients, and the animal death rate is high (Morimoto et al., 2004). Recently, optogenetics has been used to induce sporadic seizures with high temporal and spatial specificity in animal studies (Osawa et al., 2013; Khoshkhoo et al., 2017; Cela et al., 2019). In the present study, we found that optogenetic stimulation of vCA1 excitatory neurons could induce a controllable epileptic seizure with spatial memory deficit in mice. Simultaneously, tau hyperphosphorylation and accumulation were shown, while targeted reducing phospho-tau accumulation attenuated optogenetics-induced epileptic seizures with improved spatial learning and memory.

RESULTS

Optogenetic Stimulating vCa1 Excitatory Neurons Induces Epileptic Seizures With Impaired Spatial Learning and Memory

To establish a mouse model of temporal lobe epilepsy with high spatiotemporal controllability of seizures, we stereotaxically injected pAAV-CaMKII α -ChR2(H134R)-mCherry into unilateral mice ventral hippocampal CA1 (vCA1) (Figures 1A–C). Mice received optogenetic stimulation once each day for 14 consecutive days (block 1) or 21 days (block 2) to mimic sporadic and repeated seizures in clinic (Figure 2A).

Optogenetically hyperactivating vCA1 excitatory neurons with blue light (482 nm, 20 Hz) induced epileptiform discharges in ipsilateral primary motor cortex (M1) (Figure 1D). The amplitude and power spectra density (PSD) of M1 local field potential (LFP) were increased prominently during incubation and ictal periods of epilepsy (Figures 1E–H). Consistently, behavioral seizures of stages 2–6 by modified Racine scale (MRS; Racine, 1975; Haas et al., 1990) were observed (Figure 1D,

upper; Video 1). As expected, the epileptic seizures gradually stopped following the cessation of optogenetic stimulation. Further studies revealed that the latency to generalized seizures (MRS stage ≥ 4) decreased with repeated induction of epilepsy over time (Figure 1D, bottom).

By Morris water maze (MWM) test, we observed that repeated seizures for 14 consecutive days (block 1) increased the latency to find the hidden platform at days 3–4 during the training phase (Figure 2B, block 1). Besides, epileptic mice also showed decreased target quadrant crossings at day 6 (Figure 2C, block 1). These data indicate that repeated seizures impair both spatial learning and memory of mice. To examine the effect of longer repeat seizures on spatial learning and memory, we stimulated the mice for another 7 consecutive days (block 2). The additional optogenetic stimulation could also induce epileptic seizures with more serious impairments of spatial learning and memory in MWM test (block 2 in Figures 2B–D).

The optogenetics-induced seizures did not affect the time and distance of mice traveled in the central area in open-field test (Figures 2E,F) nor changed the ratio of open-arm entries in the elevated-plus maze test (Figures 2G,H). These results indicated that the repeated induction of seizures using optogenetics did not induce significant anxiety-like behavior, which was generally reported in typical epileptics models (Baxendale et al., 2005; Inostroza et al., 2012; Scott et al., 2017; Yogarajah and Mula, 2019).

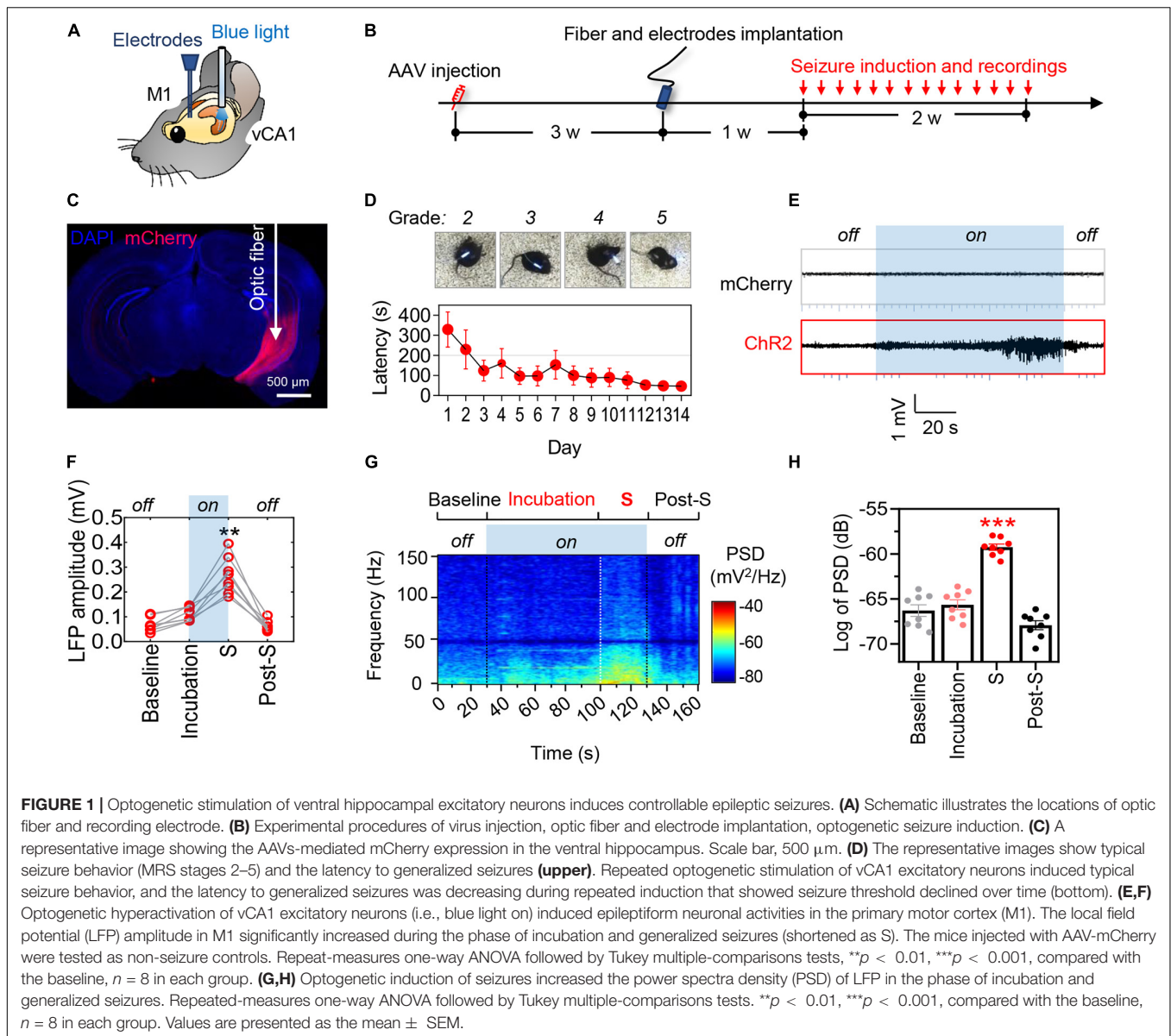
Epileptic Seizure Induces Phospho-Tau Accumulation Without Hippocampal Neuron Loss in Mice

We next examined the effect of repeated seizures on tau. The levels of tau phosphorylated at the Ser199/Ser202/Thr205 epitope (recognized by the AT8 antibody) significantly elevated both in the cortex and hippocampus of mice after 21 times of repetitive optogenetic induction of seizures (Figures 3A–C). The total tau (recognized by the Tau5 antibody) was also upregulated in the hippocampus of mice with epilepsy (Figures 3A–D).

No significant loss of hippocampal neurons was detected after repeated induction of seizures (Figure 2I), although the neuron death was commonly seen in the drug-induced epilepsy models (Morimoto et al., 2004). These data also suggest that the seizures-induced learning and memory deficits were not caused by neuron death.

Selectively Facilitating Tau Degradation Using a Proteolysis-Targeting Chimera Effectively Ameliorates Seizures and the Associated Memory Deficits

To directly test the contribution of seizures-induced elevation of phospho-tau and total tau to the seizure inductions and spatial learning and memory impairments, we used a novel small-molecule proteolysis-targeting chimera termed C4 to selectively promote tau degradation (more key information about C4 at <https://www.cnipa.gov.cn/> with a patent publication number CN111171113A).



Mice received repeated opto-stimulation for 14 days and were subcutaneously administered C4 (3 mg/kg, twice a week for 4 weeks) (Figure 4A), and then the levels of phospho-tau and total tau were measured. The results showed that C4 efficiently downregulated both phospho-tau (AT8 epitope) and total tau in the cortex and hippocampus of the epileptic mice (Figures 4B–D). Tau reduction by C4 ameliorated the optogenetics-induced seizures as shown by a prolonged latency to generalize seizures, decreased seizure duration, and the severity of seizure compared with vehicle-administered controls (Figures 5A–G). Although C4 showed limited effects in alleviating the seizures-induced spatial learning deficits during the training phase in MWM test (Figure 5H), C4 significantly improved the spatial memory as indicated by the increased target quadrant crossings (Figures 5I,J).

These data together indicate that tau accumulation plays a critical role in repeated seizures and spatial cognitive impairment; targeting tau is promising in alleviating seizures and the associated spatial memory deficits in epilepsy.

DISCUSSION

Optogenetics provides excellent tools to control neuronal activities with high spatiotemporal specificity (Mondoloni et al., 2019), which gains increasing attention in the study of epilepsy (Choy et al., 2017; Tønnesen and Kokaia, 2017). There are several advantages of these optogenetics-based models compared with classical drug-induced status epileptics models. First, optogenetic tools enable cell type- and location-specific induction of seizures. In the present study, we targeted ventral hippocampal excitatory

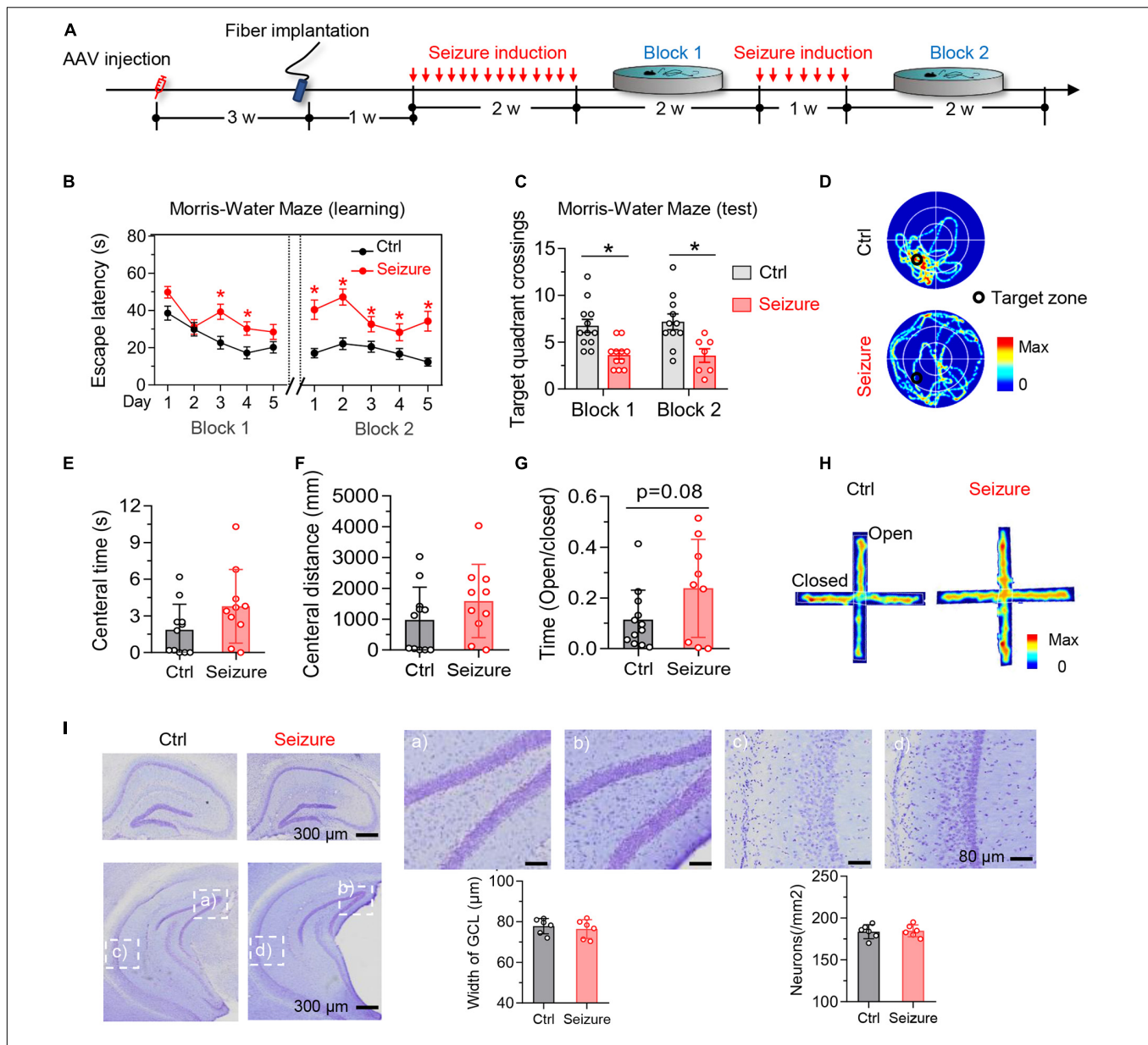
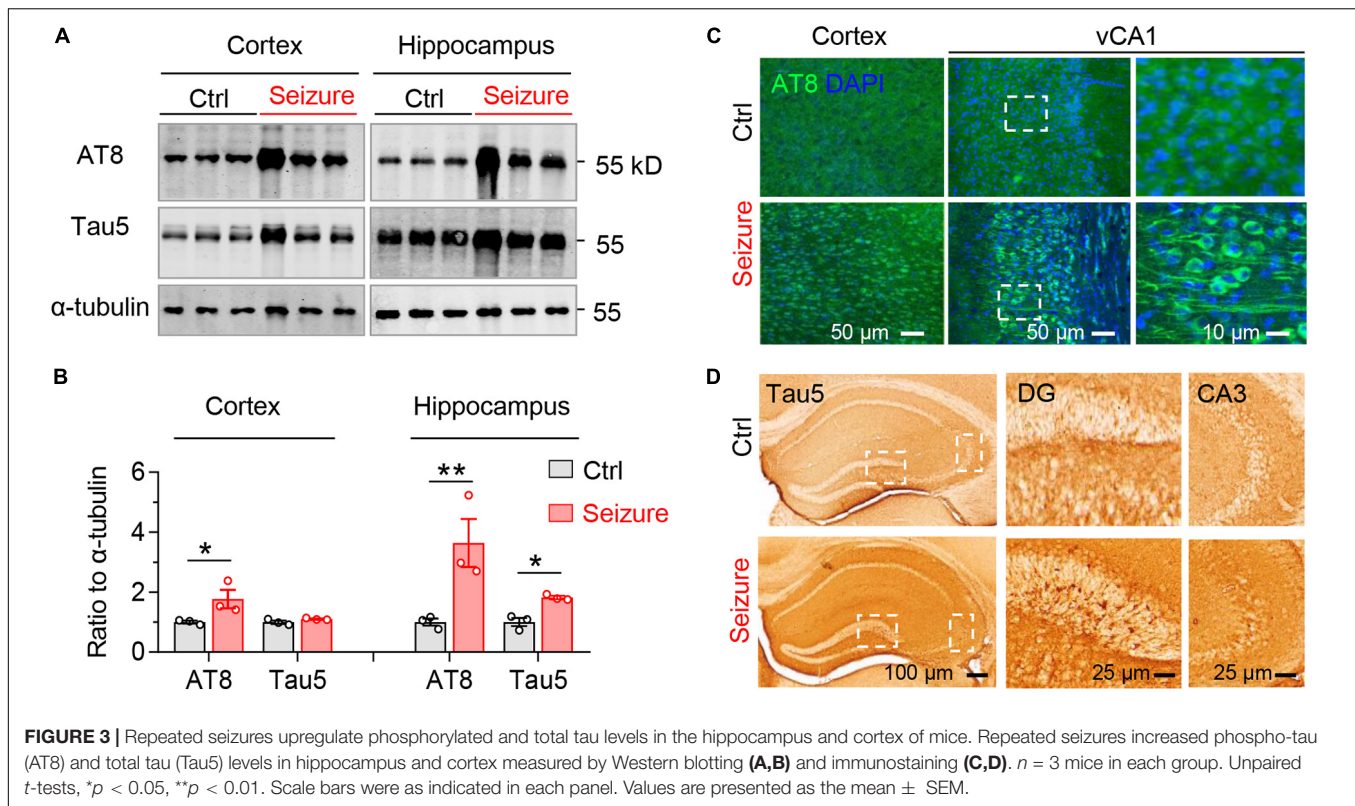


FIGURE 2 | Optogenetic induction of repeated seizures impairs spatial learning and memory without causing anxiety-like behaviors or hippocampal neuron loss in mice. **(A)** Experimental procedures of virus injection, optic fiber implantation, optogenetic seizure induction, and behavioral tests. **(B)** Repeated seizure induction caused spatial learning deficits shown by the increased escape latency during training phase. Repeated-measures ANOVA followed by Tukey multiple-comparisons tests, $*p < 0.05$. **(C,D)** Repeated seizure induction caused spatial memory deficits shown by the decreased number of target quadrant crossings in water maze test **(B)** and the representative heatmaps **(C)** show traveling time and the trace. Unpaired t test, $*p < 0.05$. **(E,H)** Repeated but controllable seizures did not induce anxiety-like behavior shown by the unchanged central time **(D)** and traveled distance **(E)** in open field test, and the increased open arm stay during elevated plus maze test **(F)**. The representative heatmaps **(G)** show traveling time and the trace. Unpaired t test, $*p < 0.05$. **(I)** Repeated but controllable seizures did not induce neuron loss in the granular cell layer (GCL) of dorsal and ventral hippocampus measured by Nissl staining ($p > 0.05$). Scale bars were as indicated in each panel. $n = 6$ mice in each group. Unpaired t tests. Values are presented as the mean \pm SEM.

neurons to mimic the etiology of temporal lobe epilepsy. Second, optogenetics brings higher accuracy for quantitatively controlling the onset, frequency, and severity of seizures. Third, by contrast to classical drug-induced status epilepticus models, which generally cause approximately 10–44% animals death (Auladell et al., 2017; Welzel et al., 2020), optogenetics-inducible epilepsy model has higher success rate and repeatability and

almost no mortality. In the present study, we established a novel mice model of optogenetically inducible sporadic epilepsy with high spatiotemporal specificity and stable repeatability.

Tau is a microtubule-associated protein mainly engaged in the microtubule stabilization and axonal transport under physiological conditions. Hyperphosphorylation of tau hinders its degradation, thus leading to the aggregation of tau and



forming of neurotoxic paired helices (Sadqi et al., 2002). Abnormal accumulation of hyperphosphorylated tau in the hippocampus or appearance of neuropil threads and NFTs in the resected epileptogenic temporal lobe has been reported in a majority of epilepsy patients (Tai et al., 2016; Smith et al., 2019). Consistently, we found that repeated induction of seizures prominently elevated phosphorylated and total tau levels in the cortex and hippocampus. However, whether and how the tau pathology is involved in epilepsy remain not fully understood. Here, using a specific chimera to facilitate tau degradation in an optogenetically inducible mice model of epilepsy, we found a contribution of intraneuronal phospho-tau accumulation to epileptic seizures and associated spatial memory deficits.

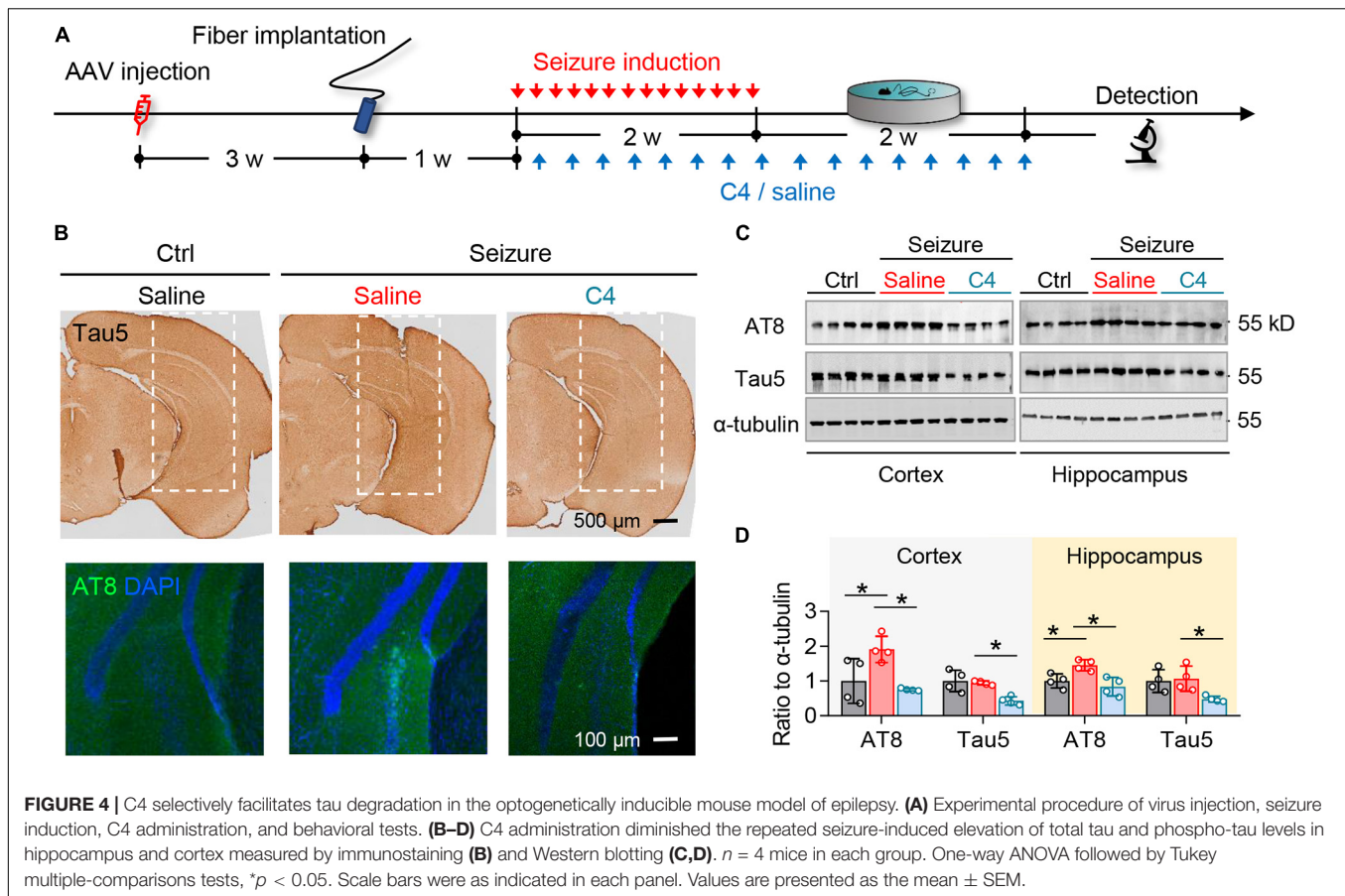
However, molecular mechanisms underlying how epilepsy resulted in phospho-tau accumulation still remain to be elucidated. Given that the tau hyperphosphorylation and accumulation generally resulted from upregulated activity of kinase, such as cyclin-dependent kinase 5 (CDK5) and glycogen synthase kinase-3 β (GSK-3 β), or downregulated protein phosphatase 2A (PP2A) activity (Iqbal et al., 2009), the observed increase of phospho-tau in epilepsy might also be attributed to the dysfunction of these kinase or phosphatases. Indeed, increased activity of glutamatergic neurons has been reported to induce tau hyperphosphorylation through PP2A inhibition by releasing of synaptic Zinc in cultured hippocampal neurons and brain slices of AD mice (Sun et al., 2012). Similarly, CDK5 and GSK-3 β were both reported to be overactivated in temporal lobe epilepsy (Liu et al., 2017). Whether these proteins change in the optogenetics-induced epilepsy and their

direct links to the abnormal tau accumulation still remain to be elucidated.

Another intriguing question is how the intraneuronal accumulation of phospho-tau dysregulates epileptic seizures. The hyperphosphorylation and abnormal aggregation of tau protein might directly affect neural network activities by causing microtubule depolymerization (Verstraelen et al., 2017) or result in excitation/inhibition imbalance by dysregulating the release of neurotransmitters (Holth et al., 2013; Sánchez et al., 2018). However, it seems currently elusive how tau accumulation determines neuronal network activities. Although mice expressing mutated human tau exhibited suppressed neuronal activity (Busche et al., 2019; Sohn et al., 2019), selective overexpressing human tau in GABAergic interneurons resulted in hyperactivation of neighboring excitatory neurons (Zheng et al., 2020). It deserved further investigation how the hyperphosphorylated tau was distributed in different subsets of neurons in epilepsy.

We have previously evidenced that intracellular accumulation of hyperphosphorylated tau dysregulated neuronal plasticity and interneuronal transmissions in AD (Yin et al., 2016; Ye et al., 2020), the most common form of dementia in the elderly. In fact, neuronal hyperactivation and epileptic seizure were commonly reported in the early stage of AD (Lam et al., 2017; Baker et al., 2019). Thus, the pathological tau-induced neuronal dysfunctions, like those in AD, might also at least partly contribute to the cognitive impairment in epilepsy.

Most importantly, we found that specifically reducing tau with a proteolysis-targeting chimera in the brain significantly



inhibited epileptic seizures, as well as alleviated spatial memory impairment in our mice model. Consistently, non-selectively facilitating tau dephosphorylation by enhancing the enzyme activity of PP2A with sodium selenite effectively prolonged the time of epilepsy induction, and reduced the number and degree of seizures (Jones et al., 2012; Liu et al., 2016). Moreover, knocking down or out of the endogenous tau also reduced the frequency and severity of seizures in mice (DeVos et al., 2013; Holth et al., 2013; Gheyara et al., 2014).

Taken together, the present study found that optogenetic overactivation of vCA1 excitatory neurons induced epileptic seizures and cognitive impairments, associating with abnormal accumulation of phospho-tau in hippocampal neurons. Further studies revealed that specific facilitating tau removal partly rescued the epileptic seizures and the associated spatial memory deficits. These findings confirm that abnormal tau accumulation plays a pivotal role in optogenetics-induced epileptic seizures, and targeting tau may be promising in treatment of epilepsy.

MATERIALS AND METHODS

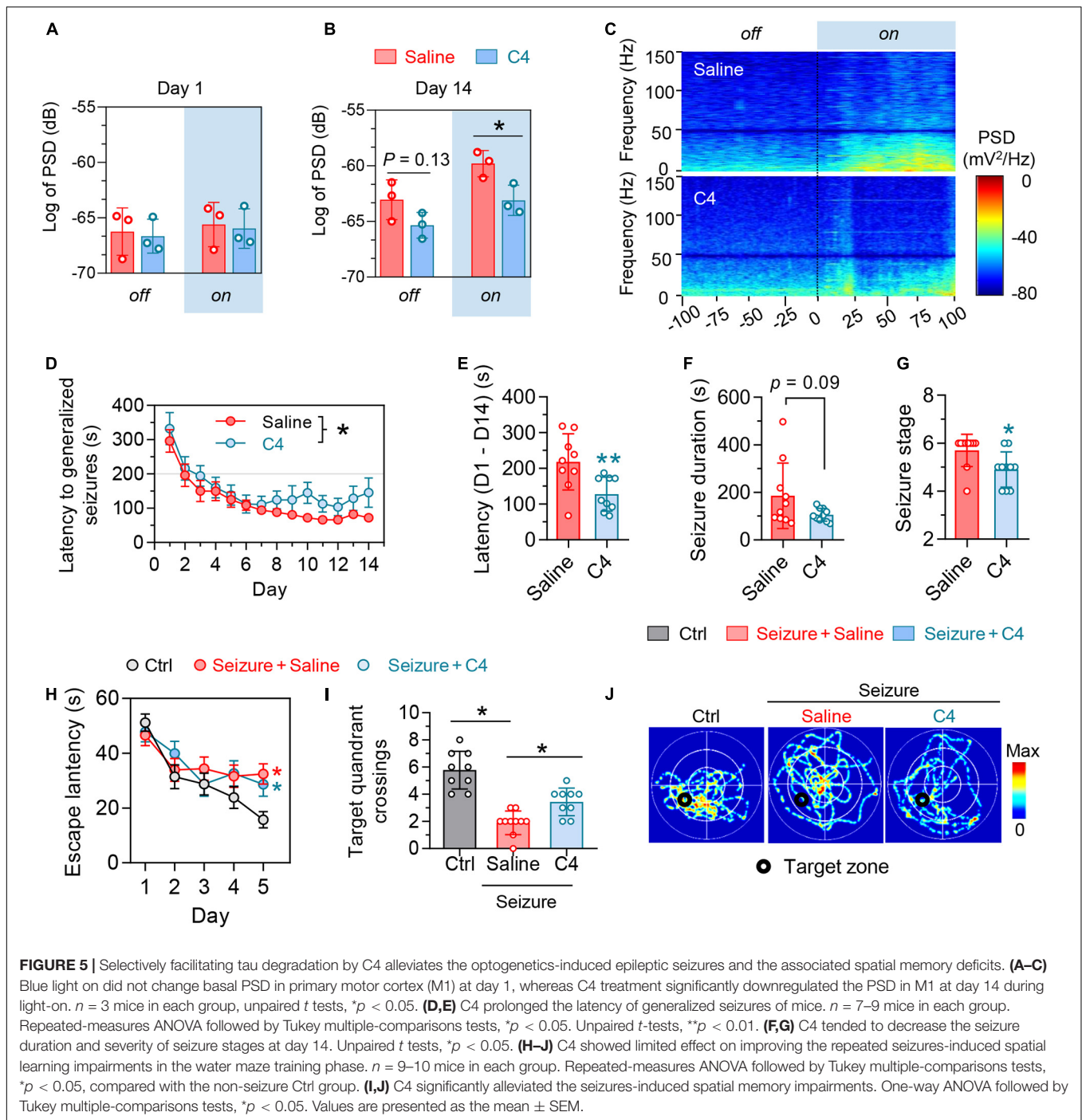
Animals

Adult (8–12 weeks) male C57BL/6 mice weighing 20–30 g were purchased from Beijing Vital River Laboratory Animal Technology Co., Ltd. All mice were housed in groups of four

to five per cage and were housed under a 12-h light-dark cycle (lights on at 7:00 PM and off at 7:00 AM) at a stable temperature (23–25°C). Food and water were available *ad libitum*. All animal studies had complied with all relevant ethical regulations for the animal testing and research and were approved by institutional guidelines and the Animal Care and Use Committee of Huazhong University of Science and Technology.

Virus Injection and Optic Fiber Cannula Implantation

Mice were anesthetized with 1% pentobarbital sodium (35 mg/kg) and head-fixed in a stereotactic frame (RWD, Shenzhen, China). Eyes were coated with erythromycin ointment to avoid strong light exposure. The scalp was incised along the skull midline after sterilizing with iodophors. pAAV-CaMKII α -Chr2(H134R)-mCherry (500 nL, $2\text{--}5 \times 10^9$ pfu/mL; OBio Technology Shanghai, China) was injected into the vCA1 (AP -3.2 mm, ML $+3.2$ mm, DV -4.5 mm) at a rate of 50 nL/min. The needle syringe was kept for 10 min before withdrawal. The skin was sutured and then sterilized with iodophors. The mice were put on a heat lamp to revive. Three weeks after virus injection, optic fiber cannulas (NA = 0.37, Newdoon, China) were implanted into the vCA1 of mice (AP -3.2 mm, ML $+3.2$ mm, DV -4.1 mm). Four screws (RWD, Shenzhen, China) were anchored around the fiber cannulas



with dental cement. Mice were put back into the cage for reviving postoperation.

Optogenetic Stimulation and Seizures Induction

Mice were handled for consecutive 3 days before seizure induction and were temporarily anesthetized with isoflurane. The fiber cannulas were connected to a plug line with FC/PC joint at both ends. Seizures were induced 10 s after the mice woke up.

Laser output is controlled by a function generator (Tektronix, China, NO. AFG 3022B). After many trials, the stimulation parameters were finally set as 20 Hz, blue light (472 nm), duty cycle 10%, pulse wave. The actual output power of optical fiber outlet was 2.8 mW/mm² (when the waveform generator was not connected, the output power of optical fiber outlet was 43.2 mW/mm²). Mice behaviors were recorded using a digital camera. The severity of mice seizures was evaluated according to MRS (Racine, 1975; Haas et al., 1990): stage 1, facial convulsions,

chewing behavior in the mouth; stage 2, chewing and rhythmic head nodding; stage 3, unilateral forelimb clonus; stage 4, bilateral forelimb clonus with rearing, standing on hind limb; stage 5, rearing and repeated falling; stage 6, wild running, jumping. Stages 1 to 3 were considered as focal seizures, and stages 4–6 considered generalized seizures. The time from stimulation onset to stage 4 was recorded as latency to generalized seizures in this study. There were some differences between Test 1 (Figures 1, 2) and Test 2 (Figure 4) in the duration of epileptic induction. The laser was turned off until stage 6 in Test 1, whereas stage 4 in Test 2. After the seizure induction, the mice were anesthetized by isoflurane, and the fiber was removed from their heads.

Local Field Potentials Recording *in vivo*

Three weeks after virus injection into the vCA1, a 16-channel electrode was implanted into the ipsilateral M1 (+1.5 mm AP, +1.5 mm ML, -1.5 mm DV). The ground of the electrode was connected to two screws attached to the skull. Mice skin was sutured and then sterilized with iodophors. Mice were allowed 1 week for recovery postoperation before *in vivo* recording. Each mouse was handled for 5 min and adapted in a box for 10 min before the first time of recording. LFPs in M1 and mouse behaviors were recorded using a Recording System (Plexon, Hong Kong, China). Data were stored for offline analysis with 16-bit format, visualized in Neuro Explore. Amplitude and PSD of LFPs were analyzed in default parameters: shift (0.5 s), number of frequency values (8,192), normalization (log of PSD), show frequency from 0 to 150 HZ. Baseline signals were recorded before the laser was turned on. When the seizure induction began, mice behaviors were observed carefully, and the optogenetic stimulation was stopped at an appropriate time. After the final electrophysiological recording, the mice were killed, and the electrodes locations were confirmed by brain slice section.

Open Field Test

The apparatus was a 60-cm × 60-cm × 50-cm plastic box. The floor was divided into nine equal squares, among which the whole central area takes up 50%. The individual mouse was placed in the center opposite to experimenter. Each mouse was allowed to explore freely for 5 min. Mice behaviors were recorded by a camera. The time and distance that the mice traveled in the central area were analyzed.

Elevated-Plus Maze Test

The elevated plus maze consisted of two enclosed arms (30 cm × 5 cm × 20 cm) and two open arms (30 cm × 5 cm). The apparatus was elevated to 50 cm above the floor. Mice were placed individually in the center of the maze facing the open arm opposite to the experimenter. The time mice spent in the open/closed arms were recorded through tracking the center of the body. The mice explored freely for 5 min.

Morris-Water Maze Test

The spatial learning and memory of mice were assessed by Morris-Water Maze test. For spatial learning, mice were trained in the maze to find a hidden platform for five consecutive days,

three trials per day with an interval of 30 min from 2:00 to 5:00 PM each day. In each trial, mice started from one of the four quadrants facing the wall of the pool. Each trial ended when the animal climbed onto the platform. If the mice did not find the platform within 60 s, they were guided to the platform and allowed to stay on the platform for 15 s. The swimming path and time mice used to find the platform (escape latency) during training, as well as time mice pass through the previous platform quadrant in the test phase, were recorded by a video camera fixed to the ceiling, 1.5 m from the water surface.

Western Blotting

Mice brains were removed, and the cortex and hippocampus were dissected on ice. Samples were homogenized with RIPA lysis buffer (Beyotime). Proteins were separated by sodium dodecyl sulfate–polyacrylamide gel electrophoresis, transferred onto nitrocellulose membranes (Merck Millipore) and then blocked with 5% bovine serum albumin (BSA). Blots were probed with polyclonal rabbit anti-Tau5 (1:1,000; cat no. MAB361, Millipore), polyclonal rabbit anti-AT8 (1:1,000; cat no. MN1020, Thermo), and polyclonal rabbit anti- α -tubulin (1:1,000; cat no. T9026, Sigma) and were then incubated with horseradish peroxidase–conjugated secondary antibodies and visualized by an enhanced chemiluminescence substrate system (Santa Cruz, CA, United States). Blots were visualized using an Odyssey Imaging System (LI-COR Biosciences) and quantitatively analyzed by ImageJ.

Immunostaining

Mice were sacrificed 1 day after the last trial of WMW test and then anesthetized and perfused through ventriculus sinister with 0.9% NaCl for 5 min and then phosphate buffer containing 4% paraformaldehyde for 5 min. Brain were cryoprotected in 25% and 30% sucrose solutions in turn for 2 days. The next day, brains were cut into 30- μ m sections using a cryostat microtome (CM1900, Leica). For immunohistochemistry, free-floating sections were blocked with 3% H₂O₂ in anhydrous methanol for 30 min, and non-specific sites were blocked with BSA for 30 min at room temperature. Sections were then incubated overnight at 4°C with Tau5 (1:200; cat no. MAB361, Millipore) or AT8 (1:200; cat no. MN1020, Thermo) antibodies. Immunoreactions were developed using a DAB-staining kit (ZSGB-BIO). For immunofluorescence, sections were thoroughly washed with PBS-T [phosphate-buffered saline (PBS) containing 0.1% Triton X-100] and incubated overnight with monoclonal mouse Tau 5 (1:200; cat no. MAB361, Millipore) or AT8 (1:200; cat no. MN1020, Thermo) antibodies. After that, the sections underwent PBS-T washes (three times, 5 min each), followed by 1-h incubation with the secondary antibody at 37°C. Finally, the slice underwent three more washes and counterstained with DAPI. Images were taken by two-photon laser-scanning confocal microscope (LSM710, Zeiss).

Nissl Staining

Mice brain slices were selected and rinsed with PBS for 5 min and then moved to the adhesive slides with a brush and dried naturally. The tar-purple dye drops about 500 μ L were spread

evenly over the brain slices. Then, the slices dyed for about 10–15 min, distilled water for 1 min, 75% alcohol, 80% alcohol, 95% alcohol, and anhydrous ethanol for 1 min each, and finally made transparent with xylene for 30–60 min. Slices were sealed with neutral resin and dried naturally.

Statistical Analyses

All data were analyzed and plotted using GraphPad Prism 7 (GraphPad Software, Inc., La Jolla, CA, United States). One-way analysis of variance (ANOVA), Tukey multiple-comparisons *post hoc* tests, and two-tailed unpaired *t* tests were used. $P < 0.05$ was considered significant. Data were shown as mean \pm SEM.

DATA AVAILABILITY STATEMENT

The raw data supporting the conclusions of this article will be made available by the authors, without undue reservation.

ETHICS STATEMENT

The animal study was reviewed and approved by institutional guidelines and the Animal Care and Use Committee of Huazhong University of Science and Technology.

REFERENCES

- Auladell, C., de Lemos, L., Verdaguer, E., Ettcheto, M., Busquets, O., Lazarowski, A., et al. (2017). Role of JNK isoforms in the kainic acid experimental model of epilepsy and neurodegeneration. *Front. Biosci.* 22, 795–814. doi: 10.2741/4517
- Avanzini, G., Depaulis, A., Tassinari, A., and de Curtis, M. (2013). Do seizures and epileptic activity worsen epilepsy and deteriorate cognitive function? *Epilepsia* 54(Suppl. 8), 14–21. doi: 10.1111/epi.12418
- Baker, J., Libretto, T., Henley, W., and Zeman, A. (2019). The prevalence and clinical features of epileptic seizures in a memory clinic population. *Seizure* 71, 83–92. doi: 10.1016/j.seizure.2019.06.016
- Baxendale, S. A., Thompson, P. J., and Duncan, J. S. (2005). Epilepsy & depression: the effects of comorbidity on hippocampal volume—a pilot study. *Seizure* 14, 435–438.
- Breuer, L. E., Boon, P., Bergmans, J. W., Mess, W. H., Besseling, R. M., de Louw, A., et al. (2016). Cognitive deterioration in adult epilepsy: does accelerated cognitive ageing exist? *Neurosci. Biobehav. Rev.* 64, 1–11. doi: 10.1016/j.neubiorev.2016.02.004
- Busche, M. A., Wegmann, S., Dujardin, S., Commins, C., Schiantarelli, J., Klickstein, N., et al. (2019). Tau impairs neural circuits, dominating amyloid-beta effects, in Alzheimer models in vivo. *Nat. Neurosci.* 22, 57–64. doi: 10.1038/s41593-018-0289-8
- Cela, E., McFarlan, A. R., Chung, A. J., Wang, T., Chierzi, S., Murai, K. K., et al. (2019). An optogenetic kindling model of neocortical epilepsy. *Sci. Rep.* 9:5236.
- Cheng, C. H., Liu, C. J., Ou, S. M., Yeh, C. M., Chen, T. J., Lin, Y. Y., et al. (2015). Incidence and risk of seizures in Alzheimer's disease: a nationwide population-based cohort study. *Epilepsy Res.* 115, 63–66. doi: 10.1016/j.eplepsyres.2015.05.009
- Choy, M., Duffy, B. A., and Lee, J. H. (2017). Optogenetic study of networks in epilepsy. *J. Neurosci. Res.* 95, 2325–2335. doi: 10.1002/jnr.23767
- DeVos, S. L., Goncharoff, D. K., Chen, G., Kebodeaux, C. S., Yamada, K., Stewart, F. R., et al. (2013). Antisense reduction of tau in adult mice protects against seizures. *J. Neurosci.* 33, 12887–12897. doi: 10.1523/jneurosci.2107-13.2013
- Feldman, L., Lapin, B., Busch, R. M., and Bautista, J. F. (2018). Evaluating subjective cognitive impairment in the adult epilepsy clinic: effects of depression, number

AUTHOR CONTRIBUTIONS

YG, JZ, and J-ZW conceived the concept, instructed data analysis, and revised the manuscript. YG and JZ conducted most of the data analysis, prepared the figures, and wrote the manuscript draft. TJ, GP, FS, and RX helped with some experiments. JW reviewed the manuscript with input from all authors. All authors contributed to the article and approved the submitted version.

FUNDING

This work was supported by grants from the National Natural Science Foundation of China (31730035, 91632305, 81721005, and 91949205), the Natural Science Foundation of China-Henan Joint Fund (U1804197), the Program for Science & Technology Innovation Talents in University of Henan Province, and the Guangdong Provincial Key S&T Program (2018B030336001).

ACKNOWLEDGMENTS

We would like to thank Professor Guohe Tan for his good advices on this research.

- of antiepileptic medications, and seizure frequency. *Epilepsy Behav.* 81, 18–24. doi: 10.1016/j.yebeh.2017.10.011
- Gheyara, A. L., Ponnusamy, R., Djukic, B., Craft, R. J., Ho, K., Guo, W., et al. (2014). Tau reduction prevents disease in a mouse model of Dravet syndrome. *Ann. Neurol.* 76, 443–456. doi: 10.1002/ana.24230
- Haas, K. Z., Sperber, E. F., and Moshé, S. L. (1990). Kindling in developing animals: expression of severe seizures and enhanced development of bilateral foci. *Brain Res. Dev. Brain Res.* 56, 275–280. doi: 10.1016/0165-3806(90)90093-e
- Holth, J. K., Bomben, V. C., Reed, J. G., Inoue, T., Younkin, L., Younkin, S. G., et al. (2013). Tau loss attenuates neuronal network hyperexcitability in mouse and *Drosophila* genetic models of epilepsy. *J. Neurosci.* 33, 1651–1659. doi: 10.1523/jneurosci.3191-12.2013
- Inostroza, M., Cid, E., Menendez de la Prida, L., and Sandi, C. (2012). Different emotional disturbances in two experimental models of temporal lobe epilepsy in rats. *PLoS One* 7:e38959. doi: 10.1371/journal.pone.0038959
- Iqbal, K., Liu, F., Gong, C. X., Alonso, A. D., and Grundke-Iqbal, I. (2009). Mechanisms of tau-induced neurodegeneration. *Acta Neuropathol.* 118, 53–69. doi: 10.1007/s00401-009-0486-3
- Jones, N. C., Nguyen, T., Corcoran, N. M., Velakoulis, D., Chen, T., Grundy, R., et al. (2012). Targeting hyperphosphorylated tau with sodium selenate suppresses seizures in rodent models. *Neurobiol. Dis.* 45, 897–901. doi: 10.1016/j.nbd.2011.12.005
- Kanner, A. M. (2009). Psychiatric issues in epilepsy: the complex relation of mood, anxiety disorders, and epilepsy. *Epilepsy Behav.* 15, 83–87. doi: 10.1016/j.yebeh.2009.02.034
- Khoshkhou, S., Vogt, D., and Sohal, V. S. (2017). Dynamic, cell-type-specific roles for GABAergic interneurons in a mouse model of optogenetically inducible seizures. *Neuron* 93, 291–298. doi: 10.1016/j.neuron.2016.11.043
- Lam, A. D., Deck, G., Goldman, A., Eskandar, E. N., Noebels, J., and Cole, A. J. (2017). Silent hippocampal seizures and spikes identified by foramen ovale electrodes in Alzheimer's disease. *Nat. Med.* 23, 678–680. doi: 10.1038/nm.4330
- Liu, S. J., Zheng, P., Wright, D. K., Dezsai, G., Braine, E., Nguyen, T., et al. (2016). Sodium selenate retards epileptogenesis in acquired epilepsy models reversing changes in protein phosphatase 2A and hyperphosphorylated tau. *Brain* 139(Pt 7), 1919–1938. doi: 10.1093/brain/aww116

- Liu, X., Ou, S., Yin, M., Xu, T., Wang, T., Liu, Y., et al. (2017). N-methyl-D-aspartate receptors mediate epilepsy-induced axonal impairment and tau phosphorylation via activating glycogen synthase kinase-3 β and cyclin-dependent kinase 5. *Discov. Med.* 23, 221–234.
- Mondoloni, S., Durand-de Cuttoli, R., and Mourot, A. (2019). Cell-Specific Neuropharmacology. *Trends Pharmacol. Sci.* 40, 696–710. doi: 10.1016/j.tips.2019.07.007
- Morimoto, K., Fahnstock, M., and Racine, R. J. (2004). Kindling and status epilepticus models of epilepsy: rewiring the brain. *Prog. Neurobiol.* 73, 1–60. doi: 10.1016/j.pneurobio.2004.03.009
- Osawa, S., Iwasaki, M., Hosaka, R., Matsuzaka, Y., Tomita, H., Ishizuka, T., et al. (2013). Optogenetically induced seizure and the longitudinal hippocampal network dynamics. *PLoS One* 8:e60928. doi: 10.1371/journal.pone.0060928
- Paudel, Y. N., Angelopoulou, E., Jones, N. C., O'Brien, T. J., Kwan, P., Piperi, C., et al. (2019). Tau related pathways as a connecting link between epilepsy and Alzheimer's disease. *ACS Chem. Neurosci.* 10, 4199–4212. doi: 10.1021/acscchemneuro.9b00460
- Racine, R. J. (1975). Modification of seizure activity by electrical stimulation: cortical areas. *Electroencephalogr. Clin. Neurophysiol.* 38, 1–12. doi: 10.1016/0013-4694(75)90204-7
- Sadqi, M., Hernández, F., Pan, U., Pérez, M., Schaeberle, M. D., Avila, J., et al. (2002). Alpha-helix structure in Alzheimer's disease aggregates of tau-protein. *Biochemistry* 41, 7150–7155. doi: 10.1021/bi025777e
- Sánchez, M. P., García-Cabrero, A. M., Sánchez-Elexpuru, G., Burgos, D. F., and Serratos, J. M. (2018). Tau-induced pathology in epilepsy and dementia: notions from patients and animal models. *Int. J. Mol. Sci.* 19:1092. doi: 10.3390/ijms19041092
- Scott, A. J., Sharpe, L., Hunt, C., and Gandy, M. (2017). Anxiety and depressive disorders in people with epilepsy: a meta-analysis. *Epilepsia* 58, 973–982. doi: 10.1111/epi.13769
- Smith, K. M., Blessing, M. M., Parisi, J. E., Britton, J. W., Mandrekar, J., and Cascino, G. D. (2019). Tau deposition in young adults with drug-resistant focal epilepsy. *Epilepsia* 60, 2398–2403. doi: 10.1111/epi.16375
- So, E. L., and Penry, J. K. (1981). Epilepsy in adults. *Ann. Neurol.* 9, 3–16.
- Sohn, P. D., Huang, C. T., Yan, R., Fan, L., Tracy, T. E., Camargo, C. M., et al. (2019). Pathogenic tau impairs axon initial segment plasticity and excitability homeostasis. *Neuron* 104, 458–470 e5.
- Sun, X. Y., Wei, Y. P., Xiong, Y., Wang, X. C., Xie, A. J., Wang, X. L., et al. (2012). Synaptic released zinc promotes tau hyperphosphorylation by inhibition of protein phosphatase 2A (PP2A). *J. Biol. Chem.* 287, 11174–11182. doi: 10.1074/jbc.m111.309070
- Tai, X. Y., Koepp, M., Duncan, J. S., Fox, N., Thompson, P., Baxendale, S., et al. (2016). Hyperphosphorylated tau in patients with refractory epilepsy correlates with cognitive decline: a study of temporal lobe resections. *Brain* 139(Pt 9), 2441–2455. doi: 10.1093/brain/aww187
- Tønnesen, J., and Kokaia, M. (2017). Epilepsy and optogenetics: can seizures be controlled by light? *Clin. Sci.* 131, 1605–1616. doi: 10.1042/cs20160492
- Verstraelen, P., Detrez, J. R., Verschuuren, M., Kuijlaars, J., Nuydens, R., Timmermans, J. P., et al. (2017). Dysregulation of microtubule stability impairs morphofunctional connectivity in primary neuronal networks. *Front. Cell Neurosci.* 11:173. doi: 10.3389/fncel.2017.00173
- Wang, J. Z., Gao, X., and Wang, Z. H. (2014). The physiology and pathology of microtubule-associated protein tau. *Essays Biochem.* 56, 111–123. doi: 10.1042/bse0560111
- Wang, Y., and Mandelkow, E. (2016). Tau in physiology and pathology. *Nat. Rev. Neurosci.* 17, 5–21.
- Welzel, L., Schidlitzki, A., Twele, F., Anjum, M., and Löscher, W. (2020). A face-to-face comparison of the intra-amygdala and intrahippocampal kainate mouse models of mesial temporal lobe epilepsy and their utility for testing novel therapies. *Epilepsia* 61, 157–170. doi: 10.1111/epi.16406
- Witt, J. A., and Helmstaedter, C. (2017). Cognition in epilepsy: current clinical issues of interest. *Curr. Opin. Neurol.* 30, 174–179. doi: 10.1097/wco.0000000000000430
- Yang, Y., and Wang, J. Z. (2018). Nature of tau-associated neurodegeneration and the molecular mechanisms. *J. Alzheimers Dis.* 62, 1305–1317. doi: 10.3233/jad-170788
- Ye, J., Yin, Y., Yin, Y., Zhang, H., Wan, H., Wang, L., et al. (2020). Tau-induced upregulation of C/EBP β -TRPC1-SOCE signaling aggravates tauopathies: a vicious cycle in Alzheimer neurodegeneration. *Aging Cell* 19:e13209.
- Yin, Y., Gao, D., Wang, Y., Wang, Z. H., Wang, X., Ye, J., et al. (2016). Tau accumulation induces synaptic impairment and memory deficit by calcineurin-mediated inactivation of nuclear CaMKIV/CREB signaling. *Proc. Natl Acad. Sci. U.S.A.* 113, E3773–E3781.
- Yogarajah, M., and Mula, M. (2019). Social cognition, psychiatric comorbidities, and quality of life in adults with epilepsy. *Epilepsy Behav.* 100:106321. doi: 10.1016/j.yebeh.2019.05.017
- Zarea, A., Charbonnier, C., Rovelet-Lecrux, A., Nicolas, G., Rousseau, S., Borden, A., et al. (2016). Seizures in dominantly inherited Alzheimer disease. *Neurology* 87, 912–919.
- Zheng, J., Li, H. L., Tian, N., Liu, F., Wang, L., Yin, Y., et al. (2020). Interneuron accumulation of phosphorylated tau impairs adult hippocampal neurogenesis by suppressing GABAergic transmission. *Cell Stem Cell* 26, 462–466. doi: 10.1016/j.stem.2020.01.021

Conflict of Interest: The authors declare that the research was conducted in the absence of any commercial or financial relationships that could be construed as a potential conflict of interest.

Copyright © 2021 Gao, Zheng, Jiang, Pi, Sun, Xiong, Wang, Wu, Li, Lei, Yu, Zhou, Yang, Zhang and Wang. This is an open-access article distributed under the terms of the Creative Commons Attribution License (CC BY). The use, distribution or reproduction in other forums is permitted, provided the original author(s) and the copyright owner(s) are credited and that the original publication in this journal is cited, in accordance with accepted academic practice. No use, distribution or reproduction is permitted which does not comply with these terms.