



OPEN ACCESS

EDITED AND REVIEWED BY
Andreea Calin,
Carol Davila University of Medicine and
Pharmacy, Romania

*CORRESPONDENCE

Yang Zhang
✉ drzhy001@163.com

RECEIVED 11 February 2025

ACCEPTED 13 February 2025

PUBLISHED 21 February 2025

CITATION

Ren R, Li W, Zhao Q, Qi C, Zhang X, Peng M,
Su D, Han P and Zhang Y (2025) Corrigendum:
Correlation between CT-derived fractional
flow reserve and myocardial strain in ischemic
heart disease patients with single coronary
artery stenosis assessed based on CCTA.
Front. Cardiovasc. Med. 12:1574571.
doi: 10.3389/fcvm.2025.1574571

COPYRIGHT

© 2025 Ren, Li, Zhao, Qi, Zhang, Peng, Su, Han
and Zhang. This is an open-access article
distributed under the terms of the [Creative
Commons Attribution License \(CC BY\)](#). The
use, distribution or reproduction in other
forums is permitted, provided the original
author(s) and the copyright owner(s) are
credited and that the original publication in
this journal is cited, in accordance with
accepted academic practice. No use,
distribution or reproduction is permitted
which does not comply with these terms.

Corrigendum: Correlation between CT-derived fractional flow reserve and myocardial strain in ischemic heart disease patients with single coronary artery stenosis assessed based on CCTA

Ruichen Ren, Wenting Li, Qingyuan Zhao, Chengcheng Qi,
Xiaoxue Zhang, Mingyu Peng, Duwang Su, Pei Han and
Yang Zhang*

Department of Radiology, Qilu Hospital of Shandong University, Jinan, China

KEYWORDS

coronary computed tomography angiography, coronary artery disease, ischemic heart
disease, fractional flow reserve, strain

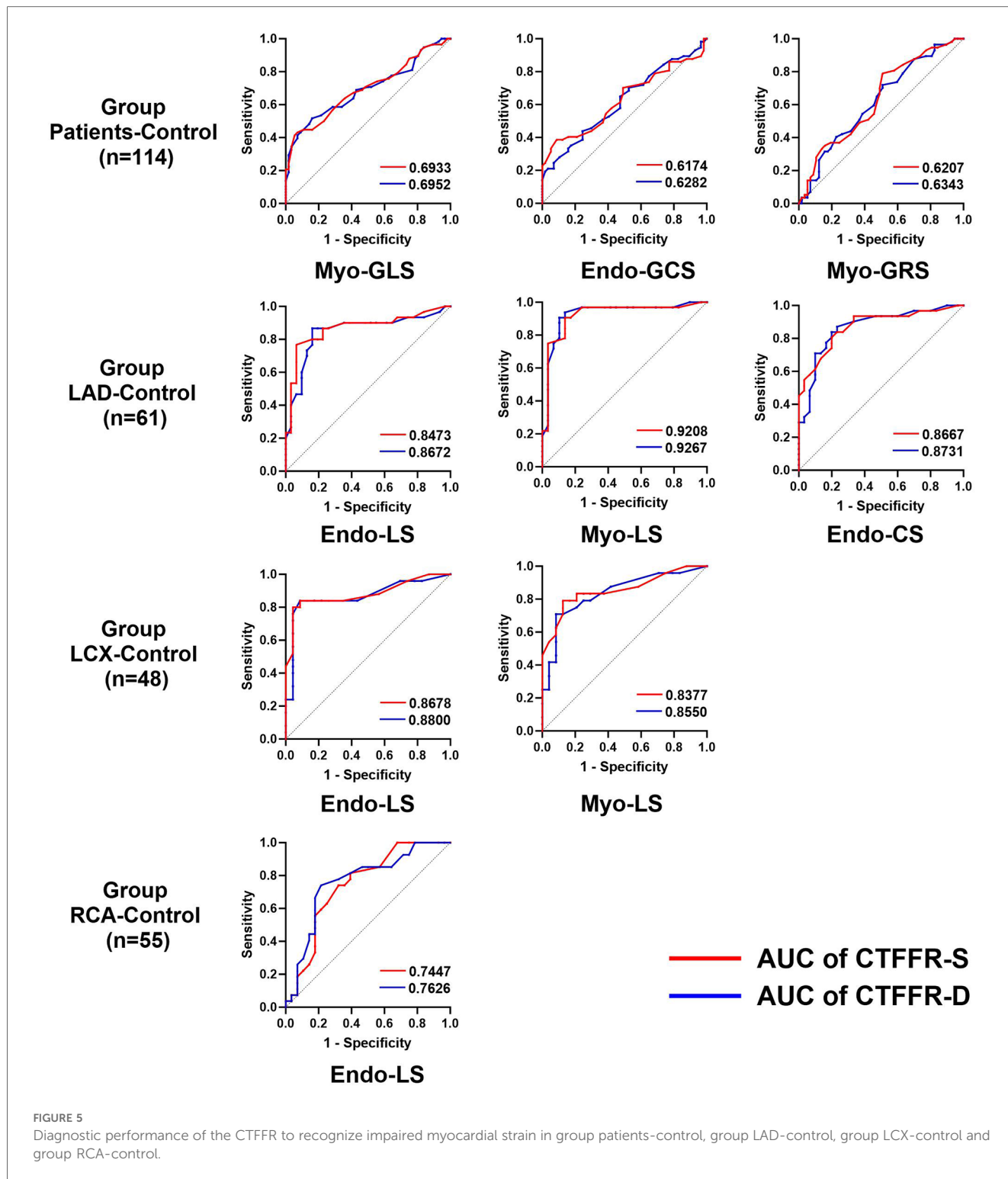
A Corrigendum on

**Correlation between CT-derived fractional flow reserve and myocardial
strain in ischemic heart disease patients with single coronary artery
stenosis assessed based on CCTA**

By Ren R, Li W, Zhao Q, Qi C, Zhang X, Peng M, Su D, Han P and Zhang Y (2025). *Front
Cardiovasc Med.* 12:1525807. doi: 10.3389/fcvm.2025.1525807

In the published article, there was an error in [Figure 5](#) as published. The labeling of the sample size in the “Group Patients-Control” section should be ($n = 114$), instead of ($n = 139$).

The corrected [Figure 5](#) and its caption “Diagnostic performance of the CTFRR to recognize impaired myocardial strain in group Patients-control, group LAD-control, group LCX-control and group RCA-control” appear below.



The authors apologize for this error and state that this does not change the scientific conclusions of the article in any way. The original article has been updated.

Publisher's note

All claims expressed in this article are solely those of the authors and do not necessarily represent those of their affiliated organizations, or those of the publisher, the editors and the reviewers. Any product that may be evaluated in this article, or claim that may be made by its manufacturer, is not guaranteed or endorsed by the publisher.