



OPEN ACCESS

EDITED BY

Michele Ciccarelli,
University of Salerno, Italy

REVIEWED BY

Maria Rosaria Rusciano,
University of Salerno, Italy
Albino Carrizzo,
University of Salerno, Italy

*CORRESPONDENCE

M. Patten
✉ patten@uke.de

RECEIVED 13 December 2023

ACCEPTED 17 January 2024

PUBLISHED 05 February 2024

CITATION

Lund N, Wieboldt H, Fischer L, Muschol N, Braun F, Huber T, Sorriento D, Iaccarino G, Müllerleile K, Tahir E, Adam G, Kirchhof P, Fabritz L and Patten M (2024) Overexpression of VEGF α as a biomarker of endothelial dysfunction in aortic tissue of α -GAL-Tg/KO mice and its upregulation in the serum of patients with Fabry's disease. *Front. Cardiovasc. Med.* 11:1355033. doi: 10.3389/fcvm.2024.1355033

COPYRIGHT

© 2024 Lund, Wieboldt, Fischer, Muschol, Braun, Huber, Sorriento, Iaccarino, Müllerleile, Tahir, Adam, Kirchhof, Fabritz and Patten. This is an open-access article distributed under the terms of the [Creative Commons Attribution License \(CC BY\)](https://creativecommons.org/licenses/by/4.0/). The use, distribution or reproduction in other forums is permitted, provided the original author(s) and the copyright owner(s) are credited and that the original publication in this journal is cited, in accordance with accepted academic practice. No use, distribution or reproduction is permitted which does not comply with these terms.

Overexpression of VEGF α as a biomarker of endothelial dysfunction in aortic tissue of α -GAL-Tg/KO mice and its upregulation in the serum of patients with Fabry's disease

N. Lund^{1,2}, H. Wieboldt¹, L. Fischer³, N. Muschol³, F. Braun^{4,5}, T. Huber^{4,5}, D. Sorriento⁶, G. Iaccarino⁷, K. Müllerleile¹, E. Tahir⁸, G. Adam⁸, P. Kirchhof¹, L. Fabritz¹ and M. Patten^{1*}

¹Department of Cardiology, University Heart & Vascular Center Hamburg, University Medical Center Hamburg-Eppendorf, Hamburg, Germany, ²Department of Intensive Care Medicine, University Hospital Hamburg-Eppendorf, Hamburg, Germany, ³Department of Pediatrics, University Medical Center Hamburg-Eppendorf, Hamburg, Germany, ⁴III. Department of Medicine, University Medical Center Hamburg-Eppendorf, Hamburg, Germany, ⁵Hamburg Center for Kidney Health, University Medical Center Hamburg-Eppendorf, Hamburg, Germany, ⁶Department of Advanced Biomedical Sciences, Interdepartmental Center of Research on Hypertension and Related Conditions of the Federico II University, Naples, Italy, ⁷Department of Clinical Medicine and Surgery, Interdepartmental Center of Research on Hypertension and Related Conditions of the Federico II University, Naples, Italy, ⁸Department of Diagnostic and Interventional Radiology and Nuclear Medicine, University Medical Center Hamburg-Eppendorf, Hamburg, Germany

Introduction: Fabry's disease is an X-linked lysosomal storage disorder caused by reduced activity of α -galactosidase A (GAL), leading to premature death on account of renal, cardiac, and vascular organ failure. Accumulation of the GAL substrate globotriaosylceramide (Gb3) in endothelial and smooth muscle cells is associated with early vascular cell damage, suggesting endothelial dysfunction as a driver of cardiorenal organ failure. Here, we studied the vascular expression of the key angiogenic factors, VEGF α and its antagonist angiostatin, in Fabry α -GAL-Tg/KO mice and determined circulating VEGF α and angiostatin serum levels in patients with Fabry's disease and healthy controls.

Methods: Cryopreserved aortic vessels from six α -GAL-Tg/KO and six wild-type (WT) mice were obtained and VEGF α and angiostatin levels were determined by performing Western blot analysis. VEGF α expression was visualized by an immunohistochemical staining of paraffin aortic rings. In addition, VEGF α and angiostatin serum levels were measured by using an enzyme-linked immunosorbent assay in 48 patients with genetically verified Fabry's disease (50% male) and 22 healthy controls and correlated with disease severity markers such as lyso-Gb3, albuminuria, NTproBNP, high-sensitive troponin T (hsTNT), and myocardial wall thickness.

Results: It was found that there was a significant increase in VEGF α protein expression (1.66 ± 0.35 vs. 0.62 ± 0.16 , $p = 0.0009$) and a decrease in angiostatin expression (0.024 ± 0.007 vs. 0.053 ± 0.02 , $p = 0.038$) in aortic lysates from α -GAL-Tg/KO compared with that from WT mice. Immunohistochemical staining revealed an adventitial VEGF α signal in α -GAL-Tg/KO mice, whereas no VEGF α signal could be detected in WT mice aortas. No differences in aortic angiostatin expression between α -GAL-Tg/KO- and WT mice could be visualized. The serum levels of VEGF α were significantly upregulated in patients with Fabry's disease compared with that in healthy controls (708.5 ± 426.3 vs. 458.5 ± 181.5 pg/ml, $p = 0.048$) and positively

associated with albuminuria ($r = 0.82$, $p < 0.0001$) and elevated NTproBNP ($r = 0.87$, $p < 0.0001$) and hsTNT values ($r = 0.41$, $p = 0.048$) in male patients with Fabry's disease. For angiostatin, no significant difference was found between patients with Fabry's disease and healthy controls (747.6 ± 390.3 vs. 858.8 ± 599.3 pg/ml).

Discussion: In conclusion, an overexpression of VEGF α and downregulation of its counter player angiostatin in aortic tissue of α -GAL-Tg/KO mice support the hypothesis of an underlying vasculopathy in Fabry's disease. Elevated VEGF α serum levels were also observed in patients with Fabry's disease and were positively associated with elevated markers of organ manifestation in males. These findings suggest that angiogenic markers, such as VEGF α , may be potentially useful biomarkers for the detection of endothelial dysfunction in classical Fabry's disease.

KEYWORDS

Fabry's disease, vasculopathy, endothelial dysfunction, angiogenic markers, VEGF, angiostatin, aortic vessels, transgenic knockout model

Introduction

Fabry's disease is an X-linked lysosomal storage disorder caused by reduced or absent α -galactosidase A (GAL) activity resulting from mutations in the *GLA* gene (1). Subsequently, globotriaosylceramide (Gb3) and its deacylated form, globotriaosylsphingosine (lyso-Gb3), accumulate in different cells and tissues throughout the body causing various clinical manifestations.

Endothelial and smooth muscle cells are the preferential target of Gb3 storage (2). Gb3 induces a variety of angiogenesis factors such as VEGF, VEGFR2, TGF β , and FGF-2 in these cells (3). Endothelial dysfunction was described in experimental models of Fabry's disease (4, 5) and may also play a pivotal role in affected patients with Fabry's disease (6). Endothelial dysfunction (6) and vascular damage reflected by increased intima-media thickness (IMT) and decreased brachial flow-mediated dilation (7) also appear to contribute to organ dysfunction in patients with Fabry's disease, including chronic kidney disease, cardiomyopathy, and stroke (8).

VEGF α is a specific endothelial cell mitogen acting as a potent pro-angiogenic factor (9). Its antagonist, angiostatin, attenuates VEGF expression, resulting in the inhibition of extracellular matrix formation and migration (10, 11). VEGF α is activated in a variety of kidney, heart, cerebral, and cutaneous diseases associated with angiogenesis (12–15). In this context, prior work from our group suggests altered markers for vascular dysfunction and shear stress in the blood of patients with Fabry's disease (16).

Here, we studied the vascular expression pattern and localization of VEGF α and angiostatin in aortic vessels of Fabry R301Q transgenic/KO (α -GAL-Tg/KO) mice. In addition, VEGF α and angiostatin concentrations were determined in the serum of patients with Fabry's disease and healthy controls and were found to be associated with biomarkers of disease severity.

Materials and methods

Mouse model

Experiments were carried out in C57BL/6 (wild-type, WT) and hR301Q α -GAL-Tg/KO mice. Specifically, these mice are

homozygous for endogenous *GLA* knockout and express the human transgene *GLA* carrying the R301Q mutation under the transcriptional control of the human *GLA* promoter. These mice were kindly provided by AMICUS Therapeutics and used as a model of Fabry's disease (17–19). The mice were housed in the animal facility of the Department of Translational Medical Sciences of Federico II University of Naples (Italy) in a 12-h light–dark cycle and provided access to a commercial mouse diet and water *ad libitum*. Animal husbandry and other experiments were conducted under Institutional Animal Care and the use of committee-approved protocols at Federico II University (Prot. n. 971/2016-PR). Aortas were collected from 9-month-old mice. Mice were euthanized, and aortas were quickly removed, rinsed in cold phosphate-buffered saline (PBS), and processed for successive analyses: one part was immediately frozen in liquid nitrogen for a biochemistry analysis, and another part was fixed in 4% paraformaldehyde for histological analysis.

Tissue preparation (aortic vessels)

Cryopreserved aortic vessels from α -GAL-Tg/KO mice and WT mice were pulverized and homogenated on ice in a RIPA buffer supplemented with protease inhibitors by repeated sonication and incubation for 1 h. The homogenates were centrifuged for 30 min at 13,000 rpm at 4°C and protein content in the supernatants was measured using a BCA assay (Thermo Fisher).

Western blotting

The total protein extracts (20 μ g) were separated on TGX 4%–20% precast gradient gels (Bio-Rad, Germany) and transferred onto nitrocellulose membranes. The membranes were blocked in 5% milk (for anti-angiostatin antibody) or 3% milk (for anti-VEGF α and anti- α -actinin antibodies). The membranes were then incubated with the following primary antibodies:

Polyclonal rabbit-a-angiostatin (Abcam, ab2904) 2 μ g/ml in 5% milk, overnight at 4°C; monoclonal mouse-a-VEGF α (Abcam, ab1316), 5 μ g/ml in tris-buffered saline (TBS)/T, 1 h at room

temperature; rabbit- α -actinin (Cell Signaling, 3134), 1:1,000 in 5% milk, overnight at 4°C. After washing with TBS/T, the membranes were incubated with horseradish peroxidase (HRP)-conjugated secondary antibodies (sheep anti-mouse, Jackson ImmunoResearch 515-035-003, 1:20,000 in 3% milk; goat anti-rabbit, Jackson ImmunoResearch JIM-111-035-003, 1:10,000 in 5% milk), washed again, and specific signals were detected using the ECL or Femto system (Thermo Fisher) according to the manufacturer's protocol. A densitometric analysis of the protein bands was done using ImageLab (Bio-Rad).

Immunohistochemistry

Paraffin sections (3 μ m) of aortic vessels from WT and α -GAL-Tg/KO mice were deparaffinized and incubated in a 10 mM citrate buffer at 95°C for 40 min for antigen retrieval. Afterward, the sections were incubated for 10 min in 0.5% Triton/TBS for permeabilization, washed in TBS, and quenched in a 0.25% Sudan black solution for 30 min on a shaker in the dark. After repeated washing, the sections were blocked in 3% bovine serum albumin (BSA) in TBS for 1 h at room temperature. The sections were then incubated with primary antibodies [anti-angiostatin (Abcam ab2904), 1:20 in 3% BSA or anti-VEGF α (Abcam, ab1316), 1:400 in 3% BSA] overnight at 4°C, washed in TBS, and incubated with secondary antibodies [donkey anti-mouse Alexa Fluor 488 (A21202 life tech) or donkey anti-rabbit Alexa Fluor 488 (21206 life tech), 1:500 in 3% BSA] for 2 h at room temperature. After repeated washing in TBS, the slides were mounted with DAPI Fluoromount G (Biozol) and fluorescence signals were descriptively analyzed using a Zeiss Axiovert M200 with ApoTome.

Study population

In this retrospective cross-sectional study, a total of 48 patients with genetically verified Fabry's disease was included and compared with 22 healthy control patients. Participants were enrolled during routine visits at the outpatient clinic of the University Heart and Vascular Center Hamburg between January 2014 and December 2020. A medical history of coronary artery disease (CAD), diabetes mellitus, arterial hypertension, and stroke was confirmed by self-report or the use of corresponding medication. A diagnosis of atrial fibrillation (AF) was established by a positive history and electrocardiogram (ECG) documentation within the last 5 years prior to examination. Cardiac symptoms were classified according to the New York Heart Association (NYHA) classification. All participants received a 12-lead surface ECG, a transthoracic echocardiography, and a routine blood test including a measurement of hsTNT (high-sensitive troponin T) and NTproBNP (brain natriuretic peptide), creatinine, GFR, and albumin in urine. The serum levels of NTproBNP were assessed by using the Atellica[®] IM NT-proBNP assay (Siemens Healthcare, Erlangen, Germany). For the measurement of serum hsTNT levels, the Elecsys Troponin T hs STAT assay (Roche Diagnostics, Rotkreuz, Schweiz) was used. In 40 patients with Fabry's disease

and in all healthy controls, cardiac magnetic resonance (CMR) imaging was performed to determine the extent of fibrosis as a marker of Fabry-associated cardiomyopathy. The study was conducted in compliance with the principles outlined in the Declaration of Helsinki and was approved by the local ethics committee (Ethikkommission der Ärztekammer Hamburg, Nr.: PV4056). All study participants gave their written informed consent.

Cardiac imaging

All study subjects underwent a comprehensive transthoracic echocardiographic examination (Philips iE33 system, Philips Healthcare, Best, Netherlands) including M-mode, two-dimensional, pulsed, and continuous-wave Doppler and tissue Doppler imaging. Structural and functional imaging parameters were measured according to the current recommendations of the American Society of Echocardiography and diastolic dysfunction was classified according to current guidelines (20). Images were analyzed using the commercially available software Syngo Dynamics (Siemens Healthcare, Erlangen, Germany).

CMR was performed on a 1.5-T scanner (Achieva, Philips Healthcare, Best, Netherlands). The imaging protocol included cine imaging and late gadolinium enhancement (LGE) imaging. LGE images were acquired using a standard phase-sensitive inversion recovery (PSIR) sequence at least 10 min after a bolus injection of gadoterate meglumine (Dotarem, Guerbet, Sulzbach, Germany) in three long-axis orientations (2CH, 3CH, and 4CH views) and a stack of short-axis slices. Typical imaging parameters were as follows: voxel size 0.98 mm³ \times 0.98 mm³ \times 8 mm³, echo time = 2.39 ms, time to repetition = 4.97 ms, and flip angle = 15°. The presence of LGE was assessed by using the commercially available software cvi42 (Circle Cardiovascular Imaging Inc., Calgary, Alberta, Canada).

Quantification of VEGF α and angiostatin in patients' serum

Protein serum levels in samples from patients with Fabry's disease and healthy controls were quantified using enzyme-linked immunosorbent assay (ELISA) kits. For measuring and analyzing VEGF α serum levels, the ELISA kit BMS277-2TEN (Invitrogen) was used, and for determining angiostatin serum levels, the ELISA kit #ELH-Angiostatin (RayBio) was used, respectively, in accordance with the manufacturer's instructions.

Statistical analysis

A statistical analysis was performed using IBM SPSS Statistics (Version 28.0, Statistical Package for the Social Sciences, International Business Machines, Inc., Armonk, NY, USA). Continuous data are given as mean and standard deviation (SD). Categorical data are given as frequencies and percentages. Outliers were identified via evaluation of the standardized residues and included whenever measurement errors could be

excluded. Statistical comparisons between the two groups were performed using the Student's *t*-test. Associations with disease severity parameters were analyzed by using Pearson's correlation tests and corrected for age- and sex-related differences. Logistic regression was performed to investigate the relationship between clinical and laboratory markers [albuminuria, lyso-Gb3, NTproBNP, hsTNT, and interventricular septal wall diameter (IVSd)] and VEGF α and angiotensin serum levels, respectively. **p*-value ≤ 0.05 was considered statistically significant.

Results

Protein expression of VEGF α and angiotensin in aortic rings of α -GAL-Tg/KO mice

Western blots with aortic lysates from six α -GAL-Tg/KO and six WT mice revealed a significant increase in VEGF α protein levels in α -GAL-Tg/KO mice compared with that in WT mice (signal intensity = 1.66 ± 0.35 vs. 0.62 ± 0.16); **p* = 0.0009), as shown in Figure 1.

Angiotensin expression showed a decrease in aortic tissue from α -GAL-Tg/KO mice compared with that from WT mice (signal intensity = 0.024 ± 0.007 vs. 0.053 ± 0.02 , **p* = 0.038), as shown in Figure 2.

Immunohistochemical staining of VEGF α in aortic rings of α -GAL-Tg/KO mice

Immunohistochemical staining of aortic rings showed an adventitial VEGF α signal in α -GAL-Tg/KO mice. No VEGF α signal could be detected in WT mice aortas (Figure 3). In

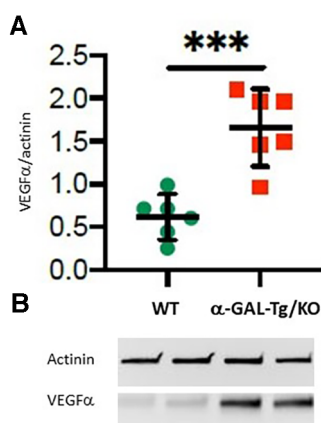


FIGURE 1

VEGF α protein expression in the aortic rings of α -GAL-Tg/KO mice. (A) Protein expression by Western blotting of VEGF α in the aortic rings of α -GAL-Tg/KO (*n* = 6) and WT mice (*n* = 6). The expression level of VEGF α was normalized to the internal control actinin and represented as the expression ratio. **p*-value < 0.05 was considered statistically significant, ****p* < 0.001. (B) Characteristic Western blots for VEGF α expression compared with actinin as control.

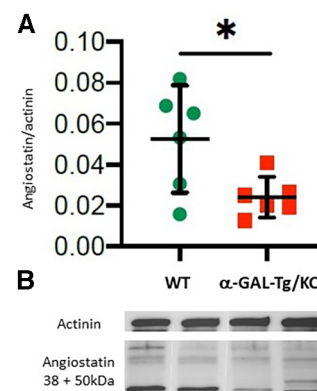


FIGURE 2

Angiotensin protein expression in the aortic rings of α -GAL-Tg/KO mice. (A) Protein expression by Western blotting of angiotensin in the aortic rings of α -GAL-Tg/KO (*n* = 6) and WT mice (*n* = 6). The expression level of angiotensin was normalized to the internal control actinin and represented as the expression ratio. **p*-value < 0.05 was considered statistically significant. (B) Characteristic Western blots for angiotensin expression compared with actinin as control.

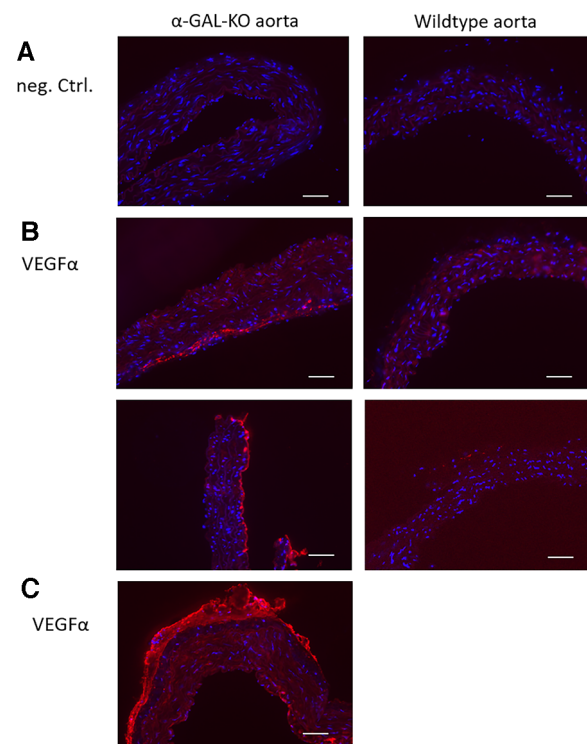


FIGURE 3

Immunohistochemical VEGF α staining of aortic rings from α -GAL-Tg/KO- and WT mice. A specific VEGF α signal could be detected in the adventitial layer of α -GAL-Tg/KO aortas. No VEGF α signal could be detected in the aortic rings from WT mice. (A) Negative control (staining without a primary antibody). (B) VEGF α signal in the aortic rings from α -GAL-Tg/KO mice (left) and WT mice (right). (C) An overview of a half VEGF α -stained aortic ring from a α -GAL-Tg/KO mouse. A similar VEGF α signal distribution pattern was detectable in all other aortic preparations from α -GAL-Tg/KO mice (not shown). Scale bars = 50 μ m.

contrast to the results of the Western blot analysis, there were no detectable differences in angiostatin expression levels between α -GAL-Tg/KO and WT mice (not shown).

VEGF α - and angiostatin serum levels in Fabry patients

Baseline characteristics

A total of 48 patients with Fabry's disease with genetically confirmed mutations in the *GLA* gene [c.1277del (3 \times), c.500T>C, c.718del (4 \times), IVS1-6, p.717del (2 \times), p.A143T (3 \times), p.A230del (2 \times), p.A389V, p.C94S, p.E341K (2 \times), p.I384N (2 \times), p.I91T (2 \times), p.K213M (2 \times), p.L310V, p.L311P, p.L89del (2 \times), p.N139S, p.N215S (6 \times), p.205 T, p.Q327I (2 \times), p.R118C, p.R227Q, p.R227X (4 \times), p.R342, p.S247P] and 22 healthy controls were included in the study. Of these, 26 patients with Fabry's disease presented with signs of cardiomyopathy, such as left ventricular hypertrophy combined with elevated serum markers of NTproBNP and/or hsTNT and/or positive LGE in CMR. In 22 patients, Fabry-associated kidney disease was detected. This was defined by biopsy and/or albuminuria without a potential other cause. [Table 1](#) summarizes the baseline characteristics for male and female patients with Fabry's disease and for the control group. As expected, patients with Fabry's disease enrolled into this study suffered from a significantly increased rate of arrhythmias and dyspnea, resulting in a higher NYHA class, and presented with higher levels of cardiac and renal markers as the control group patients. Male patients with Fabry's disease showed higher lyso-Gb3 levels than female patients, indicating a more severe phenotype in male patients, which was reflected by a higher percentage of male patients with cardiomyopathy and renal dysfunction. In accordance with this, the parameters of Fabry-associated cardiomyopathy and nephropathy were more prominent in male patients than in female patients.

VEGF α and angiostatin serum levels in patients with Fabry's disease compared with those in healthy controls

The serum levels of VEGF α were significantly upregulated in all patients with Fabry's disease compared with that in healthy controls (708.5 ± 426.3 vs. 458.5 ± 181.5 pg/ml, $*p = 0.048$), as shown in [Figure 4](#). This effect was more pronounced in male patients with Fabry's disease (721.1 ± 420.5 pg/ml) than in female patients (695.9 ± 153.5 pg/ml), although a gender-specific analysis revealed no statistical significance.

An analysis of angiostatin serum levels revealed no statistical significance (747.6 ± 390.3 vs. 858.8 ± 599.3 pg/ml) either in male or in female patients with Fabry's disease compared with those in controls ([Figure 5](#)). However, in female patients, there was a trend toward reduced angiostatin concentrations (581.6 ± 153.5 pg/ml), whereas this trend was not observed in male patients (913.6 ± 623.1 pg/ml).

Association of VEGF α and angiostatin serum levels with markers of disease severity in patients with Fabry's disease

VEGF α levels were positively associated with increased albuminuria and elevated serum concentrations of NTproBNP and hsTNT in male patients with Fabry's disease, whereas this effect could not be detected in female patients. Lyso-Gb3 and IVSd were not associated with higher VEGF α concentrations in these patients. No relationship could be detected between angiostatin serum concentrations and disease severity markers ([Table 2](#)).

No statistically significant influence of concomitant medication on VEGF and angiostatin serum levels could be detected in patients with Fabry's disease. Also for enzyme replacement therapy (ERT), there was no significant effect on VEGF and angiostatin concentrations, although there was a trend toward lower VEGF concentrations in patients with Fabry's disease under ERT compared with those in therapy-naive patients with Fabry's disease (data not provided).

Discussion

Main findings

In this study, we found increased endothelial VEGF α and reduced angiostatin levels in the aortic rings of mice with genetically defective α -GAL activity, as well as increased serum levels of VEGF α in patients with Fabry's disease, highlighting the role of endothelial cell activation and oxidative stress in Fabry's disease.

Overexpression of VEGF α

Our data demonstrate for the first time a significant increase in VEGF α protein expression in aortic lysates from α -GAL-Tg/KO mice compared with those from WT mice. In Fabry's disease, storage of Gb3, as a result of deficient α -GAL A activity, was identified to induce oxidative stress in endothelial cells ([21](#), [22](#)), leading to an activation of inflammatory and pro-angiogenic reactions ([23](#)) *in vitro* and *in vivo*, including changes in the pattern of circulating miRNA ([24](#)). In this context, we analyzed the expression of the most potent pro-angiogenic factor VEGF α and its counter player angiostatin in the aortic rings of the Fabry R301Q transgenic/KO mouse model and compared this with the expression in the serum of patients with Fabry's disease and healthy controls. In line with our data, treatment of bovine aortic endothelial cells with Gb3 induced the expression of angiogenic factors such as TGF β , VEGFR2, VEGF α , and FGF2 ([3](#), [25](#)), demonstrating a pivotal role of angiogenetic factors in Gb3-induced vasculopathy. Further studies using the α -GAL-Tg/KO mouse model revealed a renal overexpression of VEGF and TGF β in the presence of Fabry nephropathy ([3](#)).

In addition, immunohistochemical staining for VEGF α was performed in the aortic rings of α -GAL-Tg/KO and WT mice, which showed a higher degree of staining of VEGF α in α -GAL-Tg/KO mice. Although smooth muscle cells have been shown to be the major source of VEGF α expression and secretion ([26](#)), and accordingly in a model of hypertensive rats, VEGF α expression

TABLE 1 Baseline characteristics of patients with Fabry's disease and healthy controls.

<i>n</i> (%) or mean ± SD	Fabry's disease		Fabry's disease	Control
	Total	Male	Female	M = 22/F = 2
<i>n</i>	48	24 (50%)	24 (50%)	22
Age (years)	41.3 ± 11.4*	39.6 ± 12.3	42.9 ± 10	30.8 ± 8.7
BMI (kg/m ²)	24.4 ± 4.1	24.6 ± 3.9	24.2 ± 4.4	23.8 ± 1.8
Fabry nephropathy	22 (46%)**	15 (63%)	7 (29%)	0
Albuminuria <30 mg/L	26 (54%)	9 (38%)	17 (71%)	n.d.
Albuminuria 30–300 mg/L	13 (27%)	6 (25%)	7 (29%)	n.d.
Albuminuria >300 mg/L	9 (19%)	9 (38%***)	0	n.d.
Fabry cardiomyopathy	26 (54%)*	17 (71%***)	9 (38%)	0
Clinical presentation				
NYHA I	31 (65%)*	13 (54%***)	18 (75%)	22 (100%)
NYHA II	13 (27%)*	7 (29%)	6 (25%)	0
NYHA III	4 (8%)*	4 (17%***)	0	0
NYHA IV	0	0	0	0
Syncope	6 (13%)*	4 (17%***)	2 (8%)	0
ECG				
QTc (ms)	415 ± 24.3**	409.8 ± 27.3	420.7 ± 21.5	388 ± 15.5
Atrial fibrillation	5 (10%)*	4 (17%***)	1 (4%)	0
nsVT	5 (10%)*	3 (13%***)	2 (8%)	0
Laboratory values				
Lyso-Gb3 (ng/ml)	20.7 ± 20.9	35.9 ± 27.1****	5.4 ± 3.4	n.d.
NTproBNP (ng/L)	956.5 ± 1,427.2*	1,549 ± 2,489.1	364 ± 425.3	34.7 ± 16.8
hsTNT (pg/ml)	21.9 ± 21.7*	25.4 ± 22.1	18.3 ± 20.7	4.6 ± 2
GFR (CKD) (ml/min)	78.7 ± 28.3	77.7 ± 35.5	79.7 ± 18	95.9 ± 21
Creatinine (mg/dl)	1.2 ± 0.6	1.6 ± 0.9***	0.9 ± 0.2	1 ± 0.1
Albuminuria (mg/L) ^b	557.2 ± 596.9	860.5 ± 729***	64 ± 33.5	n.d.
Cardiac imaging				
IVSd (mm)	13.1 ± 3.6**	14.7 ± 3.4***	11.4 ± 3.0	10.1 ± 0.7
PWd (mm)	12 ± 2.8**	13.5 ± 2.6***	10.4 ± 2.4	8.9 ± 1.1
LVEF >60%	40 (83%)	19 (79%)	21 (88%)	22 (100%)
LVEF 46%–60%	6 (13%)	4 (17%)	2 (8%)	0
LVEF <45%	1 (2%)	1 (4%)	0	0
LA (mm)	38.3 ± 6.5*	41.9 ± 6.5***	34.8 ± 6.2	34.4 ± 4.6
E/A	1.6 ± 0.4	1.5 ± 0.4	1.6 ± 0.5	1.8 ± 0.3
E/e'	10.7 ± 4.5*	12.9 ± 5.2***	8.6 ± 2.8	7.1 ± 1.2
LGE in CMR ^a	20 (50%)**	13 (65%)	7 (35%)	0
Medication				
ERT	29 (60%)	19 (79%****)	10 (21%)	0
Migalastat	1 (2%)	1 (4%)	0	0
ACE inhibitors/AT-1 blocker	18 (38%)	13 (54%***)	5 (21%)	0
Beta blockers	8 (17%)	5 (21%)	3 (13%)	0
Statins	9 (19%)	7 (29%***)	2 (8%)	0
Diuretics	8 (17%)	5 (21%)	3 (13%)	0
Concomitant diseases				
CAD	5 (10%)*	5 (21%***)	0	0
Diabetes	1 (2%)	1 (4%)	0	0
Hypertension	17 (35%)**	11 (46%***)	6 (25%)	0
Stroke	5 (10%)*	3 (13%)	2 (8%)	0

A, peak late transmitral filling velocity; ACE inhibitors, angiotensin-converting enzyme inhibitors; AT-1R, angiotensin I-receptor; BMI, body mass index; E, peak early transmitral filling velocity; e, early mitral annulus velocity; eGFR, estimated glomerular filtration rate; F, female; LA, left atrial; LVEF, left ventricular ejection fraction; M, male; *n*, total number; nsVT, non-sustained ventricular tachycardia; PWd, posterior wall diameter.

Values for continuous data are given as mean ± SD. Values for categorical data are given as counts and percentage of the total column number.

^aLGE in *n* = 40 receiving CMR.

^bAlbuminuria in *n* = 22 with Fabry-associated nephropathy.

**p*-value ≤ 0.05 vs. control.

***p*-value ≤ 0.001 vs. control.

****p*-value ≤ 0.05 male vs. female patients with Fabry's disease.

*****p*-value ≤ 0.001 male vs. female patients with Fabry's disease.

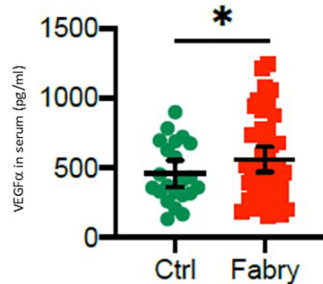


FIGURE 4
VEGF α serum level in patients with Fabry's disease. Serum concentrations of VEGF α in 48 patients with Fabry's disease and 22 healthy controls determined by using an enzyme-linked immunosorbent assay. * p -value <0.05 was considered statistically significant.

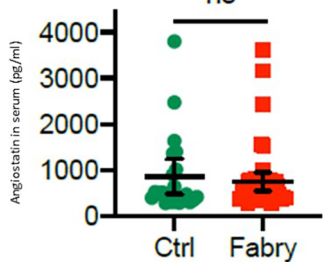


FIGURE 5
Angiostatin serum level in patients with Fabry's disease. Serum concentrations of angiostatin in 48 patients with Fabry's disease and 22 healthy controls determined by using an enzyme-linked immunosorbent assay.

was mainly distributed in the outer to middle layers of the media (27), our data indicate that the VEGF α signal in mice aortic tissue was mainly increased in the adventitial layer. Whether this is a species-specific effect is not known. However, our observations are supported by a study in human atherosclerotic arteries analyzing the localization of different VEGF isoforms, also showing the most prominent staining for VEGF α in the adventitia along with some staining of the media (28).

To reveal the relevance of VEGF α expression seen in this *in vitro* model, we also measured VEGF α concentrations in the serum of 48 patients with Fabry's disease and 22 healthy controls, which showed significantly higher VEGF α concentrations in the Fabry's disease cohort. In line with other studies demonstrating VEGF α overexpression in patients with Fabry's disease with cutaneous and systemic manifestations, this effect was more pronounced in male patients (29). This may be explained by the fact that male patients presented with a more severe clinical phenotype and a higher lyso-Gb3 level, which is usually attributed to lower enzyme activities in male patients compared with female patients. In this context, a proteomics-based analysis recently showed a correlation of VEGF α with lyso-Gb3 and residual enzyme activity in classical Fabry's disease (30). Although an association with a higher lyso-Gb3 level could not be confirmed in our cohort, we show that VEGF α was positively associated with albuminuria, NTproBNP, and hsTNT, as markers for organ manifestation in Fabry's disease. However, this relationship was solely seen in male patients with Fabry's disease.

No statistically relevant influence of co-medication on VEGF α levels could be found, although there was a trend toward lower VEGF α serum concentrations in patients with Fabry's disease under ERT compared with those in the small group of untreated patients with Fabry's disease. This may indicate a potentially beneficial effect of ERT, which has to be further evaluated in a larger cohort of patients with Fabry's disease.

TABLE 2 Association of different biomarkers for organ manifestation with VEGF α and angiostatin serum levels.

	Fabry's disease Total (n = 48)		Fabry's disease Male (n = 24)		Fabry's disease Female (n = 24)	
	r	p-value	r	p-value	r	p-value
VEGFα (pg/ml) correlated to						
Lyso-Gb3 (ng/ml)	0.11	0.47	0.23	0.28	-0.19	0.37
NTproBNP (ng/l)	0.51	≤ 0.001	0.87	≤ 0.0001	0.2	0.34
hsTNT (pg/mL)	0.05	0.75	0.41	0.048*	-0.13	0.54
Albuminuria (mg/L)	0.47	≤ 0.001	0.82	≤ 0.0001	-0.16	0.46
IVSd (mm)	-0.03	0.84	0.1	0.63	-0.15	0.48
Angiostatin (pg/ml) correlated to						
Lyso-Gb3 (ng/ml)	0.28	0.051	0.19	0.38	0.2	0.34
NTproBNP (ng/L)	-0.002	0.99	-0.04	0.85	0.1	0.64
hsTNT (pg/ml)	-0.03	0.84	-0.15	0.48	0.12	0.59
Albuminuria (mg/L)	0.15	0.3	0.09	0.68	-0.1	0.64
IVSd (mm)	0.10	0.48	0.01	0.96	0.05	0.83

r, Pearson's correlation coefficient.

Results from the correlation tests of laboratory values and markers of organ manifestation in 48 patients with Fabry's disease. All values were corrected for age- and sex-related differences.

* p -value ≤ 0.05 was considered statistically significant.

Reduced expression of angiostatin

Angiostatin is an internal fragment of plasminogen and is generated by proteolytic cleavage through matrix metalloproteinases (MMP) and urokinase plasminogen activator (uPA) (31, 32). It acts as a potent inhibitor of angiogenesis and attenuates VEGF expression, resulting in the inhibition of extracellular matrix formation and migration (10, 11). Recently, we showed altered MMP9 and angiostatin levels in the serum of patients with Fabry's disease compared with healthy controls, suggesting a higher extracellular matrix turnover in Fabry's disease (16). Accordingly, we found a suppressed angiostatin expression in aortic rings of the α -GAL-Tg/KO mouse model. In the serum of patients with Fabry's disease, we also observed a trend toward reduced angiostatin serum levels; however, this did not reach statistical significance.

Conclusions

An overexpression of VEGF α in aortic tissue of the Fabry mouse model and a corresponding higher serum level of VEGF α , especially in male patients with a progressive state of Fabry's disease, support the hypothesis of an underlying vasculopathy. There is growing evidence that vascular damage induced by lipid storage or substrate-independent mechanisms is an underlying pathophysiologic feature in the development of progressive organ manifestation. In this context, our findings call for further research determining whether oxidative stress and endothelial cell activation are suitable therapeutic targets in Fabry's disease.

Strengths and limitations

One of the strengths of the study lies in the translational approach quantifying VEGF α in the vascular rings of an established murine model of Fabry's disease and in the serum of genotyped patients with Fabry's disease. However, a limitation is that data were obtained only from a single center, which necessitates independent validation. The other limitations are as follows: patients with Fabry's disease were approximately 10 years older than the control group patients and only two female patients were included in the control group. Therefore, age- and sex-related influences on VEGF α and angiostatin levels could not be sufficiently validated. Also, residual enzyme activity α -GAL was not explicitly measured in our cohort.

Data availability statement

The raw data supporting the conclusions of this article will be made available by the authors, without undue reservation.

Ethics statement

The studies involving humans were approved by Ethikkommission der Ärztekammer Hamburg. The studies were conducted in accordance with the local legislation and institutional requirements. The participants provided their written informed consent to participate in this study. Ethical approval was not required for the studies on animals in accordance with the local legislation and institutional requirements because only commercially available established cell lines were used.

Author contributions

NL: Formal Analysis, Writing – original draft, Data curation, Methodology. HW: Data curation, Formal Analysis, Methodology, Writing – review & editing. LFi: Data curation, Writing – review & editing. NM: Writing – review & editing, Supervision, Validation. FB: Validation, Writing – review & editing, Funding acquisition, Resources, Visualization. TH: Validation, Writing – review & editing, Supervision. DS: Writing – review & editing, Data curation, Methodology. GI: Methodology, Writing – review & editing, Funding acquisition, Supervision, Validation. KM: Supervision, Validation, Writing – review & editing, Data curation. ET: Data curation, Validation, Writing – review & editing, Methodology. GA: Validation, Writing – review & editing, Supervision. PK: Supervision, Writing – review & editing, Project administration. LFa: Supervision, Writing – review & editing. MP: Funding acquisition, Conceptualization, Formal Analysis, Validation, Visualization, Writing – original draft.

Funding

The authors declare financial support was received for the research, authorship, and/or publication of this article.

This study was supported by a research grant to MP from Takeda/Shire. The α -GAL-Tg/KO mice were kindly provided by Amicus Therapeutics. FB was supported by the Else Kröner-Fresenius-Stiftung and the German Society of Nephrology. FB was funded by the Federal Ministry of Education and Research under funding number 01EO2106. Responsibility for the content of this publication lies with the author. PK was partially supported by the European Union AFFECT-AF, MAESTRIA, British Heart Foundation, German Center for Cardiovascular Research (DZHK), German Research Foundation, and Leducq Foundation. Takeda/Shire was not involved in the study design, analysis, interpretation of data, the writing of this article or the decision to submit it for publication.

Conflict of interest

The authors declare that the research was conducted in the absence of any commercial or financial relationships that could be construed as a potential conflict of interest.

The authors declared that they were an editorial board member of Frontiers, at the time of submission. This had no impact on the peer review process and the final decision.

Publisher's note

All claims expressed in this article are solely those of the authors and do not necessarily represent those of their affiliated

organizations, or those of the publisher, the editors and the reviewers. Any product that may be evaluated in this article, or claim that may be made by its manufacturer, is not guaranteed or endorsed by the publisher.

References

- Zarate YA, Hopkin RJ. Fabry's disease. *Lancet*. (2008) 372(9647):1427–35. doi: 10.1016/S0140-6736(08)61589-5
- Park JL, Whitesall SE, D'Alecy LG, Shu L, Shayman JA. Vascular dysfunction in the alpha-galactosidase a-knockout mouse is an endothelial cell-, plasma membrane-based defect. *Clin Exp Pharmacol Physiol*. (2008) 35(10):1156–63. doi: 10.1111/j.1440-1681.2008.04984.x
- Lee MH, Choi EN, Jeon YJ, Jung SC. Possible role of transforming growth factor-beta1 and vascular endothelial growth factor in Fabry disease nephropathy. *Int J Mol Med*. (2012) 30(6):1275–80. doi: 10.3892/ijmm.2012.1139
- Satoh K. Globotriaosylceramide induces endothelial dysfunction in Fabry disease. *Arterioscler Thromb Vasc Biol*. (2014) 34(1):2–4. doi: 10.1161/ATVBAHA.113.302744
- Sorriento D, Iaccarino G. The cardiovascular phenotype in Fabry disease: new findings in the research field. *Int J Mol Sci*. (2021) 22(3):1331. doi: 10.3390/ijms22031331
- Kalliokoski RJ, Kalliokoski KK, Penttinen M, Kantola I, Leino A, Viikari JS, et al. Structural and functional changes in peripheral vasculature of Fabry patients. *J Inher Metab Dis*. (2006) 29(5):660–6. doi: 10.1007/s10545-006-0340-x
- Rombach SM, van den Bogaard B, de Groot E, Groener JE, Poorthuis BJ, Linthorst GE, et al. Vascular aspects of Fabry disease in relation to clinical manifestations and elevations in plasma globotriaosylsphingosine. *Hypertension*. (2012) 60(4):998–1005. doi: 10.1161/HYPERTENSIONAHA.112.195685
- Rombach SM, Twickler TB, Aerts JM, Linthorst GE, Wijburg FA, Hollak CE. Vasculopathy in patients with Fabry disease: current controversies and research directions. *Mol Genet Metab*. (2010) 99(2):99–108. doi: 10.1016/j.ymgme.2009.10.004
- Carmeliet P, Jain RK. Molecular mechanisms and clinical applications of angiogenesis. *Nature*. (2011) 473(7347):298–307. doi: 10.1038/nature10144
- Troyanovsky B, Levchenko T, Mansson G, Matvienko O, Holmgren L. Angiominin: an angiostatin binding protein that regulates endothelial cell migration and tube formation. *J Cell Biol*. (2001) 152(6):1247–54. doi: 10.1083/jcb.152.6.1247
- Hajitou A, Grignet C, Devy L, Berndt S, Blacher S, Deroanne CF, et al. The antitumoral effect of endostatin and angiostatin is associated with a down-regulation of vascular endothelial growth factor expression in tumor cells. *FASEB J*. (2002) 16(13):1802–4. doi: 10.1096/fj.02-0109fj
- Korybalska K, Pyda M, Kawka E, Grajek S, Breborowicz A, Witowski J. Interpretation of elevated serum VEGF concentrations in patients with myocardial infarction. *Cytokine*. (2011) 54(1):74–8. doi: 10.1016/j.cyto.2011.01.003
- Gunsilius E, Petzer AL, Stockhammer G, Kahler CM, Gastl G. Serial measurement of vascular endothelial growth factor and transforming growth factor-beta1 in serum of patients with acute ischemic stroke. *Stroke*. (2001) 32(1):275–8. doi: 10.1161/01.STR.32.1.275-b
- Hoeger PH. Infantile haemangioma: new aspects on the pathogenesis of the most common skin tumour in children. *Br J Dermatol*. (2011) 164(2):234–5. doi: 10.1111/j.1365-2133.2011.10204.x
- Schrijvers BF, Flyvbjerg A, De Vriese AS. The role of vascular endothelial growth factor (VEGF) in renal pathophysiology. *Kidney Int*. (2004) 65(6):2003–17. doi: 10.1111/j.1523-1755.2004.00621.x
- Loso J, Lund N, Avanesov M, Muschol N, Lezius S, Cordts K, et al. Serum biomarkers of endothelial dysfunction in Fabry associated cardiomyopathy. *Front Cardiovasc Med*. (2018) 5:108. doi: 10.3389/fcvm.2018.00108
- Gambardella J, Fiordelisi A, Cerasuolo FA, Buonaiuto A, Avvisato R, Viti A, et al. Experimental evidence and clinical implications of Warburg effect in the skeletal muscle of Fabry disease. *iScience*. (2023) 26(3):106074. doi: 10.1016/j.isci.2023.106074
- Shimmoto M, Kase R, Itoh K, Utsumi K, Ishii S, Taya C, et al. Generation and characterization of transgenic mice expressing a human mutant alpha-galactosidase with an R301Q substitution causing a variant form of Fabry disease. *FEBS Lett*. (1997) 417(1):89–91. doi: 10.1016/S0014-5793(97)01263-5
- Khanna R, Soska R, Lun Y, Feng J, Frascella M, Young B, et al. The pharmacological chaperone 1-deoxygalactonojirimycin reduces tissue globotriaosylceramide levels in a mouse model of Fabry disease. *Mol Ther*. (2010) 18(1):23–33. doi: 10.1038/mt.2009.220
- Nagueh SF, Smiseth OA, Appleton CP, Byrd BF, Dokainish H, Edvardsen T, et al. Recommendations for the evaluation of left ventricular diastolic function by echocardiography: an update from the American Society of Echocardiography and the European Association of Cardiovascular Imaging. *Eur Heart J Cardiovasc Imaging*. (2016) 17(12):1321–60. doi: 10.1093/ehjci/jev082
- Bergmann M, Holz F, Kopitz J. Lysosomal stress and lipid peroxidation products induce VEGF-121 and VEGF-165 expression in ARPE-19 cells. *Graefes Arch Clin Exp Ophthalmol*. (2011) 249(10):1477–83. doi: 10.1007/s00417-011-1682-0
- Shen JS, Meng XL, Moore DF, Quirk JM, Shayman JA, Schiffmann R, et al. Globotriaosylceramide induces oxidative stress and up-regulates cell adhesion molecule expression in Fabry disease endothelial cells. *Mol Genet Metab*. (2008) 95(3):163–8. doi: 10.1016/j.ymgme.2008.06.016
- Namdar M, Gebhard C, Studiger R, Shi Y, Mocharla P, Schmied C, et al. Globotriaosylsphingosine accumulation and not alpha-galactosidase-A deficiency causes endothelial dysfunction in Fabry disease. *PLoS One*. (2012) 7(4):e36373. doi: 10.1371/journal.pone.0036373
- Gambardella J, Fiordelisi A, Sorriento D, Cerasuolo F, Buonaiuto A, Avvisato R, et al. Mitochondrial microRNAs are dysregulated in patients with Fabry disease. *J Pharmacol Exp Ther*. (2023) 384(1):72–8. doi: 10.1124/jpet.122.001250
- Carnicer-Caceres C, Arranz-Amo JA, Cea-Arestin C, Camprodon-Gomez M, Moreno-Martinez D, Lucas-Del-Pozo S, et al. Biomarkers in Fabry disease. Implications for clinical diagnosis and follow-up. *J Clin Med*. (2021) 10(8):1664. doi: 10.3390/jcm10081664
- Ferrara N, Houck K, Jakeman L, Leung DW. Molecular and biological properties of the vascular endothelial growth factor family of proteins. *Endocr Rev*. (1992) 13(1):18–32. doi: 10.1210/edrv-13-1-18
- Kuwahara M, Ohbayashi T, Hanawa K, Shoji A, Ozaki AN, Ozaki H, et al. Enzymatic incorporation of chemically-modified nucleotides into DNAs. *Nucleic Acids Res Suppl*. (2002) 2:83–4. doi: 10.1093/nass/2.1.83
- Belgore F, Blann A, Neil D, Ahmed AS, Lip GY. Localisation of members of the vascular endothelial growth factor (VEGF) family and their receptors in human atherosclerotic arteries. *J Clin Pathol*. (2004) 57(3):266–72. doi: 10.1136/jcp.2003.012419
- Zampetti A, Gnarrà M, Borsini W, Giurdanella F, Antuzzi D, Piras A, et al. Vascular endothelial growth factor (VEGF-a) in Fabry disease: association with cutaneous and systemic manifestations with vascular involvement. *Cytokine*. (2013) 61(3):933–9. doi: 10.1016/j.cyto.2012.12.011
- Tebani A, Mauhin W, Abily-Donval L, Lesueur C, Berger MG, Nadjar Y, et al. A proteomics-based analysis reveals predictive biological patterns in Fabry disease. *J Clin Med*. (2020) 9(5):1325. doi: 10.3390/jcm9051325
- Farnoodian M, Wang S, Dietz J, Nickells RW, Sorenson CM, Sheibani N. Negative regulators of angiogenesis: important targets for treatment of exudative AMD. *Clin Sci (Lond)*. (2017) 131(15):1763–80. doi: 10.1042/CS20170066
- Jurasz P, Santos-Martinez MJ, Radomska A, Radomski MW. Generation of platelet angiostatin mediated by urokinase plasminogen activator: effects on angiogenesis. *J Thromb Haemost*. (2006) 4(5):1095–106. doi: 10.1111/j.1538-7836.2006.01878.x