



## OPEN ACCESS

## EDITED BY

Rainer de Martin,  
Medical University of Vienna, Austria

## REVIEWED BY

Vivek Nanda,  
University of Alabama at Birmingham,  
United States  
Lingfeng Luo,  
Stanford University, United States

## \*CORRESPONDENCE

Olga A. Cherepanova  
✉ cherepol@ccf.org

<sup>†</sup>These authors have contributed equally to this work

RECEIVED 13 August 2023

ACCEPTED 09 October 2023

PUBLISHED 23 October 2023

## CITATION

Shin J, Tkachenko S, Gomez D, Tripathi R,  
Owens GK and Cherepanova OA (2023)

Smooth muscle cells-specific loss of OCT4  
accelerates neointima formation after acute  
vascular injury.

Front. Cardiovasc. Med. 10:1276945.  
doi: 10.3389/fcvm.2023.1276945

## COPYRIGHT

© 2023 Shin, Tkachenko, Gomez, Tripathi,  
Owens and Cherepanova. This is an open-  
access article distributed under the terms of the  
[Creative Commons Attribution License \(CC BY\)](https://creativecommons.org/licenses/by/4.0/).  
The use, distribution or reproduction in other  
forums is permitted, provided the original  
author(s) and the copyright owner(s) are  
credited and that the original publication in this  
journal is cited, in accordance with accepted  
academic practice. No use, distribution or  
reproduction is permitted which does not  
comply with these terms.

# Smooth muscle cells-specific loss of OCT4 accelerates neointima formation after acute vascular injury

Junchul Shin<sup>1</sup>, Svyatoslav Tkachenko<sup>2</sup>, Delphine Gomez<sup>3</sup>,  
Rupande Tripathi<sup>4</sup>, Gary K. Owens<sup>4†</sup> and Olga A. Cherepanova<sup>1\*†</sup>

<sup>1</sup>Department of Cardiovascular and Metabolic Sciences, Lerner Research Institute, Cleveland Clinic, Cleveland, OH, United States, <sup>2</sup>Department of Genetics and Genome Sciences, Case Western Reserve University, Cleveland, OH, United States, <sup>3</sup>Department of Medicine, Division of Cardiology, University of Pittsburgh, Pittsburgh, PA, United States, <sup>4</sup>Robert M. Berne Cardiovascular Research Center, University of Virginia, Charlottesville, VA, United States

**Introduction:** There is growing evidence that smooth muscle cell (SMC) phenotypic transitions play critical roles during normal developmental and tissue recovery processes and in pathological conditions such as atherosclerosis. However, the molecular mechanisms responsible for these transitions are not well understood. Recently, we found that the embryonic stem cell/induced pluripotent stem cell (iPSC) factor OCT4, which was believed to be silenced in somatic cells, plays an atheroprotective role in SMC, and regulates angiogenesis after corneal alkali burn and hindlimb ischemia by mediating microvascular SMC and pericyte migration. However, the kinetics of OCT4 activation in arterial SMC and its role in acute pathological conditions are still unknown.

**Methods and Results:** Here, using an *Oct4*-IRES-GFP reporter mouse model, we found that OCT4 is reactivated in the carotid artery 18 hours post-acute ligation-induced injury, a common *in vivo* model of the SMC phenotypic transitions. Next, using a tamoxifen-inducible *Myh11*-CreERT2 *Oct4* knockout mouse model, we found that the loss of OCT4, specifically in SMC, led to accelerated neointima formation and increased tunica media following carotid artery ligation, at least in part by increasing SMC proliferation within the media. Bulk RNA sequencing analysis on the cultured SMC revealed significant down-regulation of the SMC contractile markers and dysregulation of the genes belonging to the regulation of cell proliferation and, positive and negative regulation for cell migration ontological groups following genetic inactivation of *Oct4*. We also found that loss of *Oct4* resulted in suppression of contractile SMC markers after the injury and in cultured aortic SMC. Further mechanistic studies revealed that OCT4 regulates SMC contractile genes, *ACTA2* and *TAGLN*, at least in part by direct binding to the promoters of these genes.

**Conclusion:** These results demonstrate that the pluripotency factor OCT4 is quickly activated in SMC after the acute vascular injury and inhibits SMC hyperproliferation, which may be protective in preventing excessive neointima formation.

## KEYWORDS

smooth muscle cells, OCT4, proliferation, differentiation, vascular injury

## Introduction

Vascular smooth muscle cells (SMC) are highly specialized cells that regulate blood vessel tone and blood pressure. Mature differentiated SMC have a low cell proliferation and migration rate, low synthetic activity, and express a unique repertoire of contractile proteins, ion channels, and signaling molecules required to support cell contractile functions (1, 2). However, SMC are very plastic and can reversibly change their phenotype in response to environmental cues (3). This process, called SMC phenotypic switching, mimics some aspects of the dedifferentiation process (1). The phenotypically modulated non-contractile SMC has reduced expression of the unique combination of contractile marker proteins, also known as smooth muscle marker genes, that are required for their contractile functions, including SM myosin heavy chain (MYH11), SM  $\alpha$ -actin (ACTA2), SM 22 $\alpha$  (TAGLN), and calponin (CNN1) (3). The cells stop behaving as differentiated SMCs and revert to a more pluripotent-like state capable of migrating, laying down the extracellular matrix, and proliferating. Phenotypic switching of vascular SMC plays a critical role in restenosis after vascular injury (4) and in atherosclerosis (5) development through a dramatic increase in the rate of cell proliferation, migration, synthesis of extracellular matrix proteins and pro-inflammatory molecules, and a decrease in the expression of SMC-specific marker genes. Proliferation and migration of vascular SMC are normal processes necessary for tissue repair in response to vascular wall damage. However, in some pathological conditions, SMC promote pathological vascular wall remodeling, at least in part through increased migration and proliferation.

Smooth muscle cell phenotypic transitions are regulated via the complex transduction of environmental cue-mediated signals. Platelet-Derived Growth Factors (PDGF) (6, 7), oxidized phospholipids (8), and pro-inflammatory cytokines, such as IL1 $\beta$  (9), play critical roles in SMC phenotypic switching. We previously demonstrated that KLF4, a Krüppel-like family of transcriptional repressors members, is a master regulator of SMC phenotypic switching *in vitro* and *in vivo* (10, 11). KLF4 is induced after PDGF-BB, oxidized phospholipid, or IL1 $\beta$  exposure, and KLF4-signaling has been shown to attenuate SRF/myocardin binding to SMC CaRG boxes (11). In addition, KLF4 has been implicated in the epigenetic reprogramming of SMC (12). Recently, it has been shown that microRNAs (13) and long noncoding RNAs (14) are also involved in regulating SMC differentiation and modulation of SMC phenotype.

Recent SMC-lineage tracing animal studies in combination with single-cell (sc)RNA-sequencing revealed that phenotypically modified SMC demonstrate remarkable phenotypic plasticity in many pathological conditions, including atherosclerosis (15–18), obesity and hyperglycemia (19), and aneurysm formation (20). For example, studies from several groups uncovered that in atherosclerosis, SMC down-regulate contractile markers and obtain markers of other cell origins, including macrophages, osteoblasts, myofibroblasts, and mesenchymal stem cell-like cells, indicating that SMC phenotypic switching is multi-directional. Moreover, multi-color lineage tracing studies revealed that SMC-

derived cells within the atherosclerotic lesion (21) or post-vascular injury neointima (22) are oligoclonal, generated from only a few pre-existing SMC, indicating high proliferation activity of these cells (23). However, despite much knowledge about molecular mechanisms of SMC dedifferentiation, little is known about specific mechanisms switching cells to specific phenotypic states.

Recently, we found that the pluripotency factor OCT4, which was believed to be silenced in somatic cells, plays an atheroprotective role in SMC in that genetic inactivation of OCT4 in SMC led to the worsening of atherosclerosis development in atherosclerotic *Apoe*<sup>-/-</sup> mice at least in part by preventing SMC migration and investment into the protective fibrous cap (5). *In vitro*, we demonstrated that OCT4 is reactivated in SMC in response to oxidized phospholipids, hypoxia, and Toll-like receptor 3 activation via hydroxymethylation of the *OCT4* promoter and KLF4- and HIF1 $\alpha$ -dependent mechanisms (5).

Atherosclerosis is a chronic inflammatory disease that takes a long time to develop. Nevertheless, SMC phenotypic transition may happen very quickly in response to acute vascular injury that leads to a hypoxic environment, indicating that OCT4 can also play a role in SMC phenotypic switching during vascular remodeling after injury. Of particular relevance, we found that OCT4 plays an important role in microvascular SMC and pericytes by regulating angiogenesis following non-atherosclerosis-related injuries, including corneal alkali burn and hind limb ischemia (24). However, it is still unknown if protective SMC-specific OCT4-dependent mechanisms are activated in other acute pathological settings to enhance injury repair and/or vascular remodeling. Also, it is unknown whether OCT4 directly regulates genes involved in the contractile machinery of SMC.

In this study, we utilized a carotid ligation injury, the common *in vivo* model of the SMC phenotypic switching (25), to investigate the role of the SMC-derived OCT4 in acute vascular conditions. We demonstrate that OCT4 is quickly upregulated in the tunica media after injury, and genetic inactivation of OCT4, specifically in SMC, leads to significant increases in the neointima formation post-injury, at least in part via increases in SMC proliferation. Mechanistically, we demonstrate that OCT4 directly binds to the SMC contractile gene promoters (TAGLN and ACTA2), and loss of OCT4 results in quicker suppression of ACTA2 after injury compared to control. Our findings indicate that OCT4 has an important fundamental role in SMC in numerous chronic and acute stress conditions.

## Materials and methods

### Mice

Animal protocols were approved by the University of Virginia and Lerner Research Institute Animal Care and Use Committees. *Oct4*<sup>Flox/Flox</sup> (Pou5f1<sup>tm1Scho</sup>) mice were generously provided by H. Schöler (Max Planck Institute, Germany) and *Myh11-CreERT2* [Tg(Myh11-cre/ERT2)1Soff] mice by S. Offermanns

(Max Planck Institute, Germany). Oct4-IRES-GFP mice were purchased from the Jackson Laboratory (B6.129S4-*Pou5f1<sup>tm2Jae</sup>/J*, #008214).

*Oct4<sup>Flox/Flox</sup>* mice were mated with *Myh11-CreERT2* mice to generate *Oct4<sup>Flox/WT</sup>Myh11-CreERT2* mice. The *Myh11-CreERT2* transgene is located on the Y-chromosome, thus only male mice were used for experiments. *Oct4<sup>Flox/WT</sup>Myh11-CreERT2* males were mated with *Oct4<sup>Flox/WT</sup>* females to generate experimental *Oct4<sup>Flox/Flox</sup>Myh11-CreERT2* and control *Oct4<sup>WT/WT</sup>Myh11-CreERT2* male littermate mice. The genotype of conditional *Oct4* mice and *Myh11-CreERT2* mice were identified as described previously (26, 27).

To activate Cre-recombinase, tamoxifen (Sigma-Aldrich, 1 mg/100  $\mu$ l in peanut oil) was administered through eight daily intraperitoneal injections starting at 5–6 weeks of age.

### Carotid ligation injury

Carotid artery ligation injury was performed in *Oct4<sup>Δ/Δ</sup>Myh11-CreERT2*, control *Oct4<sup>WT/WT</sup>Myh11-CreERT2*, *Oct4-IRES-GFP<sup>+/-</sup>* and control *Oct4-IRES-GFP<sup>-/-</sup>* mice as described previously (25, 28). The right carotid artery was completely sutured proximal to the carotid bifurcation using a sterile suture silk 6-0, permanently occluding blood flow to the superficial and deep branches. The left carotid artery served as an uninjured control. The right (injured) and left (uninjured/control) carotid arteries were harvested 1, 3, or 21 days after injury and fixed with 4% paraformaldehyde. Paraffin-embedded carotids were sectioned at 5  $\mu$ m thickness from the ligation to the aortic arch. Morphometric and immunohistochemical analyses were conducted using 3–4 sections per artery. The right and left carotid arteries were harvested the same day after injury for RNA extraction. The injured *Oct4-IRES-GFP* mice tissues were harvested 18 h after injury, washed with PBS, and immediately subjected to epi-fluorescence microscopy.

### Smooth muscle cell culture

Mouse aortic SMC were isolated from the thoracic aortas of 6-week-old male C57BL/6 mice or *Oct4<sup>WT/WT</sup>* and *Oct4<sup>Δ/Δ</sup>* mice following tamoxifen injections using the collagenase/elastase protocol, as previously described (5). For experiments with POVPC treatment, confluent SMC were starved with serum-free media (SFM), including DMEM/F12 (Gibco), 100 U/ml penicillin/streptomycin [Gibco], 1.6 mM/L L-glutamine [Gibco], to induce growth arrest and differentiation of cells. After culturing in SFM for 48 h, mouse aortic SMCs were treated with DMSO-vehicle, or POVPC (10  $\mu$ g/ml; Cayman Chemicals). Cells were used for experiments between passages 5–12.

### Immunohistochemical and morphometric analyses

The morphometric characteristics of the carotids were analyzed using the Modified Russell-Movat (Movat) staining.

Immunohistochemistry (IH) was conducted with antibodies for OCT4-biotin (clone C10, Santa-Cruz Biotechnology Inc.), ACTA2-biotin (clone1A4, Santa Cruz Biotechnology Inc.), and Ki67 (ab15580, Abcam). Staining for IH was visualized by DAB (Acros Organics). Images were acquired with Zeiss Axioskope2 fitted with an AxioCamMR3 camera. Image acquisition was performed with AxioVision40 V4.6.3.0 software (Carl Zeiss Imaging Solution). The settings were fixed at the beginning of the acquisition and analysis steps. Vessel morphometry [external elastic lamina (EEL), neointima, and tunica media] and areas of positive immunohistochemical staining were quantified using ImagePro Plus 7.0 software (Media Cybernetics, Inc) as previously described (5, 28, 29). The number of OCT4 positive cells are counted using ImageJ (NIH) software after immunostaining. **Supplementary Figure S1** explains the strategy for OCT4 signal analysis.

“Live” Oct4-GFP expression was detected by epi-fluorescence microscopy (Zeiss). ImageJ (NIH) software was used for quantification. The threshold for a positive signal was set by minimal positive pixels in the native vessel pictured in the same field as the injured vessel.

### RNA extraction, cDNA preparation, and quantitative real-time RT-PCR

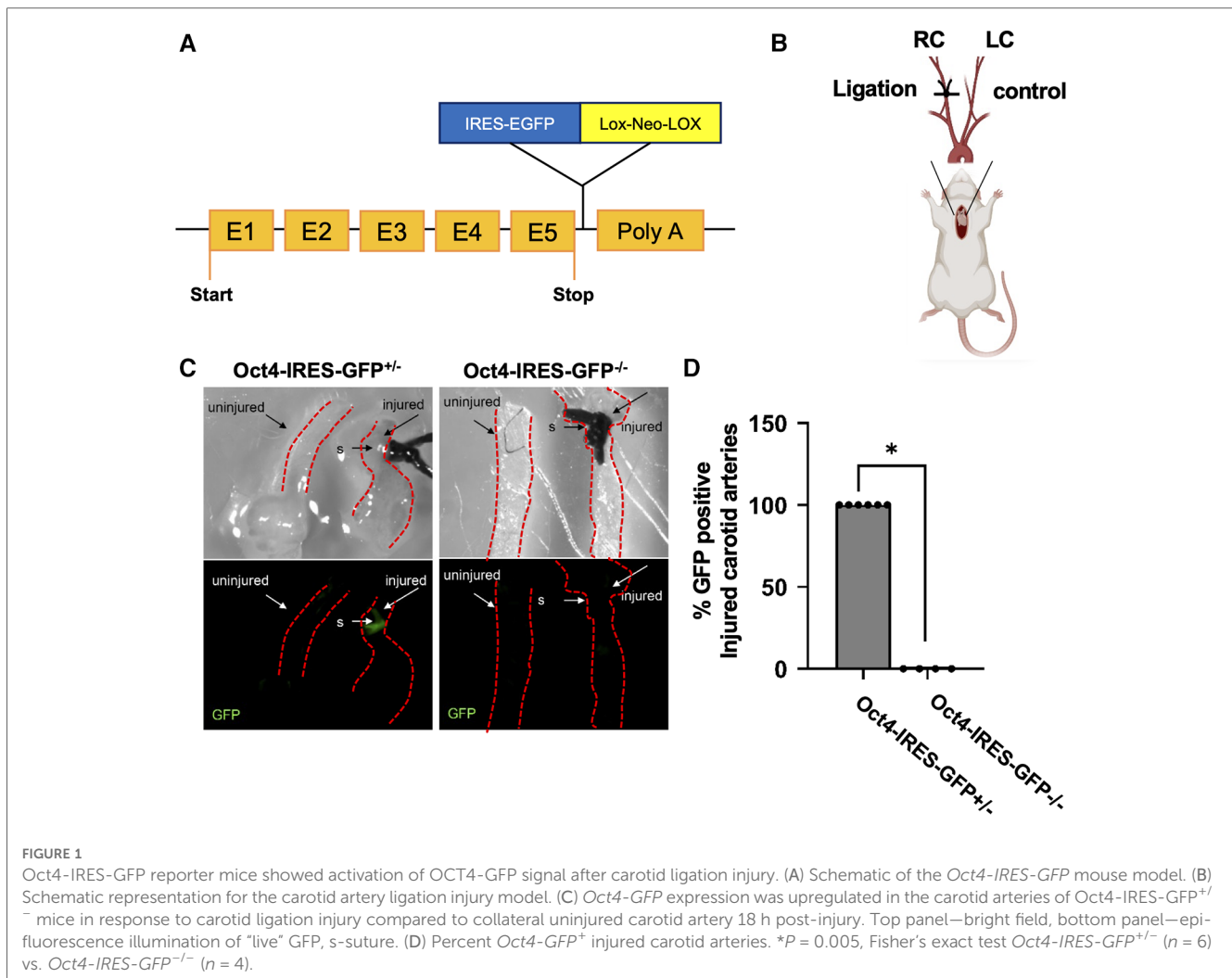
Total RNA isolation from cultured cells and carotid tissues was performed using Trizol reagent (Invitrogen) following the manufacturer’s protocol. Extracted RNA was treated with DNaseI (Invitrogen), and 1 mg of RNA was reverse transcribed with iScript cDNA synthesis kit (BioRad). Real-time RT-PCR was performed on a C1000<sup>TM</sup> Thermal Cycler CFX96<sup>TM</sup> (BioRad) using SensiFAST<sup>TM</sup> SYBR NO-ROX Mix (Bioline) and specific primers for mouse *Myh11*, *Cnn1*, *Tagln*, and *18s RNA*, as previously described (5). The gene expression was normalized to *18s RNA*. All experiments were conducted in triplicates or duplicates and performed in 2–3 independent experiments.

### Cell viability assay

Cell viability was measured the CellTiter 96<sup>®</sup> AQueous One Solution Cell Proliferation assay (MTS assay) (Cell Promega) as previously described (5). Experiments were done in triplicates for each experimental group and performed in 2–3 independent experiments.

### Chromatin immunoprecipitation (ChIP) assay

ChIP assays were performed as previously described (5). The sheared chromatin was immunoprecipitated with 2  $\mu$ g of the OCT4 antibodies (Santa-Cruz, sc-20691) and immune complexes were recovered with magnetic beads (Millipore). Quantitative RT-PCR was performed using SensiFAST<sup>TM</sup> SYBR NO-ROX Mix



(Bioline) and primers specific for the *Acta2* and *Tagln* promoters. Primers—*Acta2* BS1 F:GGCAACACAGGCTGGTTAAT, R: GCCA TTAGCTGAGGACTTGG; BS2 F: TGCGATCTCTGTATTTGA GCA, R:TGGATTCTGGGAGTGCTTCT, *Tagln* BS1 F: CAA GTCCGGTAACAAGGAA, R: AAGTCTGCTTGGCTCACCAC; BS2 F: TTGAAAAGGCCACTTTGAAC, R: AGAAAAGGGGA GGCATTCTA.

## Statistics

The Kolmogorov-Smirnov test was performed to test for the normality of the data. Two-tailed Student’s *t*-tests or one-way ANOVA were used to compare two groups of continuous variables with normal distribution. Multiple-way ANOVA was used for multiple-group comparison. Two-group comparisons with non-normal distributions were analyzed using the non-parametric ANOVA based on the Wilcoxon rank sum test. Fisher’s exact test was used for categorical data. *P* < 0.05 was considered significant. GraphPad software 9.4.0 was used for all statistical analyses. All *in vitro* experiments were performed in duplicates or triplicates in 2–

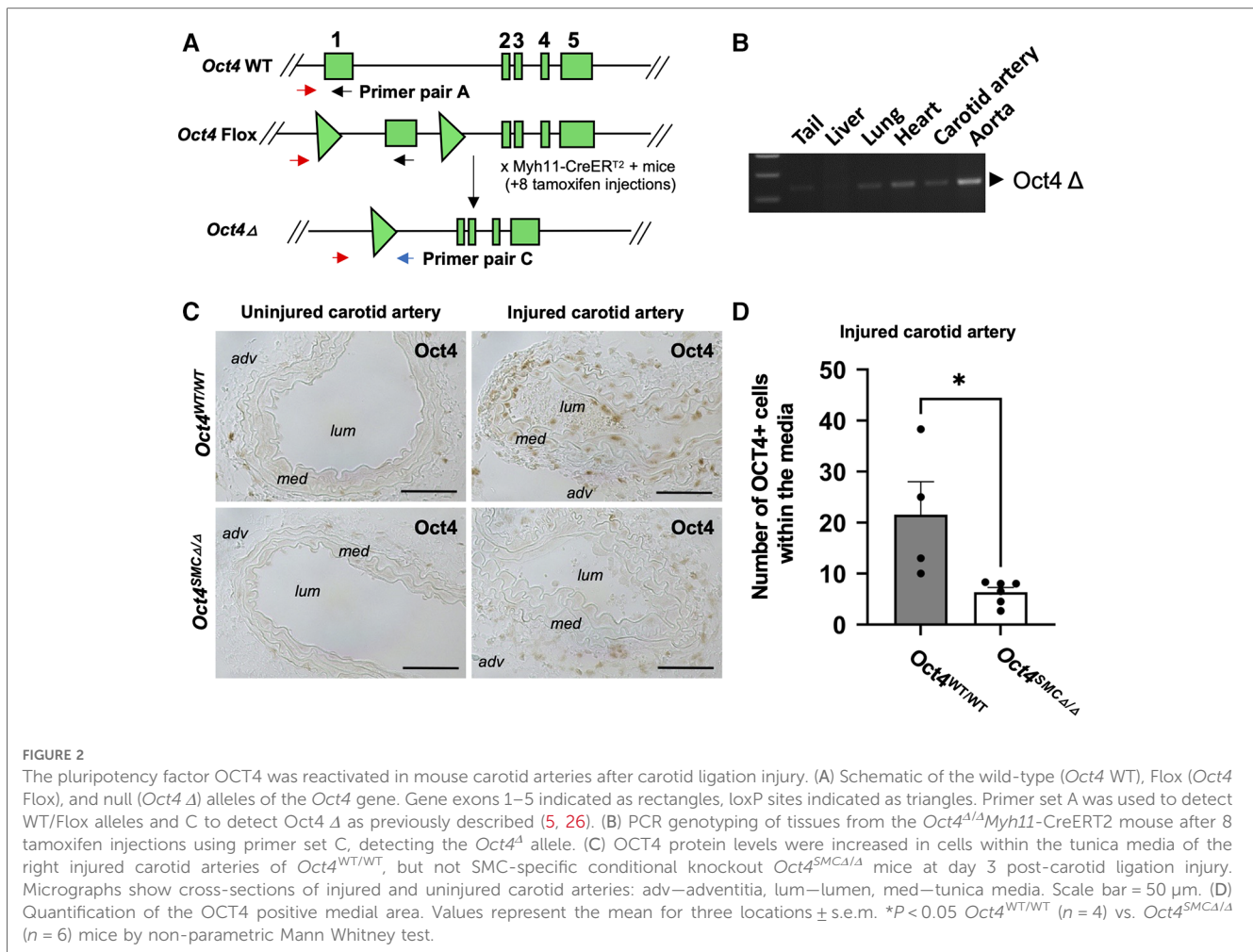
5 independent experiments. The numbers of animals used for *in vivo* experiments are indicated in the Figures.

## Results

### The pluripotency factor OCT4 is upregulated after acute carotid ligation injury

Previous studies have detected the pluripotent isoform OCT4 in somatic cells by detecting mRNA or protein levels. However, these methods are controversial due to several potential false positives associated with endogenous OCT4 transcript and protein detection (30). We used several genetic animal models to detect the presence and function of OCT4 in SMC without relying on antibody or gene expression methods.

First, to evaluate the activation of OCT4 after carotid ligation injury, we utilized *Oct4-IRES-GFP* reporter mice, in which the endogenous *Oct4* locus controls GFP expression (31) (Figure 1A). Specifically, the right carotid artery was completely ligated proximal to the carotid bifurcation (Figure 1B). The left carotid artery was used as an



uninjured control. Importantly, we found that the *Oct4*-GFP signal was activated in the carotid arteries of *Oct4*-IRES-GFP<sup>+/-</sup> mice in response to ligation injury as compared to collateral uninjured carotid artery 18 h post-injury (Figures 1C,D).

Second, we used conditional SMC-specific tamoxifen-inducible *Oct4* knockout mice that we previously generated by crossing *Oct4*<sup>Flox/Flox</sup> mice (26) with mice carrying a tamoxifen-inducible Cre recombinase/estrogen receptor fusion protein under transcriptional control of the *Myh11* promoter (*Myh11*-CreERT2) (27) (Figure 2A). We previously demonstrated that tamoxifen-treated *Oct4*<sup>Flox/Flox</sup>,*Myh11*-CreERT2 mice showed selective recombination of *Oct4* in SMC-rich tissues such as the aorta (5) and carotid artery (Figure 2B) but no detectable recombination in non-SMC-rich tissues, such as the liver. To determine if OCT4 plays a role in non-atherogenic vascular pathogenesis, SMC-specific *Oct4* knockout mice (designated as *Oct4*<sup>SMCΔ/Δ</sup>) and wild-type mice (designated as *Oct4*<sup>WT/WT</sup>) were subjected to carotid ligation injury. Results of OCT4 immunostaining showed marked induction of the OCT4 expression three days following carotid ligation in *Oct4*<sup>WT/WT</sup> injured carotid arteries but not in uninjured arteries (Figure 2C). This induction was not observed within medial cells of *Oct4*<sup>SMCΔ/Δ</sup> injured carotid arteries (Figure 2D), consistent with SMC-specific gene targeting.

These results provide clear evidence that OCT4 is quickly activated in response to acute vascular injury within the medial SMC, suggesting that this factor has a functional role in vascular remodeling after the injury.

### SMC-specific loss of OCT4 accelerates SMC proliferation and alters neointima formation following vascular injury

The morphometric analysis of the carotid arteries at 21 days post-injury revealed that genetic inactivation of OCT4 in SMC resulted in significant increases in intimal, medial, and total vessel area of the injured carotid artery injury, as well as outward remodeling as indicated by an increased external elastic lamina (EEL) area (Figures 3A–D). No differences were observed between *Oct4*<sup>SMCΔ/Δ</sup> and *Oct4*<sup>WT/WT</sup> uninjured carotid arteries. Importantly, medial areas of *Oct4*<sup>SMCΔ/Δ</sup> injured arteries were increased by 30%–40% compared to controls, suggesting that OCT4 may regulate SMC proliferation. To test this possibility, we stained the injured carotid arteries from *Oct4*<sup>SMCΔ/Δ</sup> and *Oct4*<sup>WT/WT</sup> mice for the proliferation marker Ki67. At 3 days post-injury, Ki67 staining was significantly increased in the injured carotid arteries of *Oct4*<sup>SMCΔ/Δ</sup> vs. *Oct4*<sup>WT/WT</sup> mice (Figures 3E,F). Overall, results indicate that OCT4 plays a critical role in vascular remodeling after injury, at least in part by inhibiting hyper-

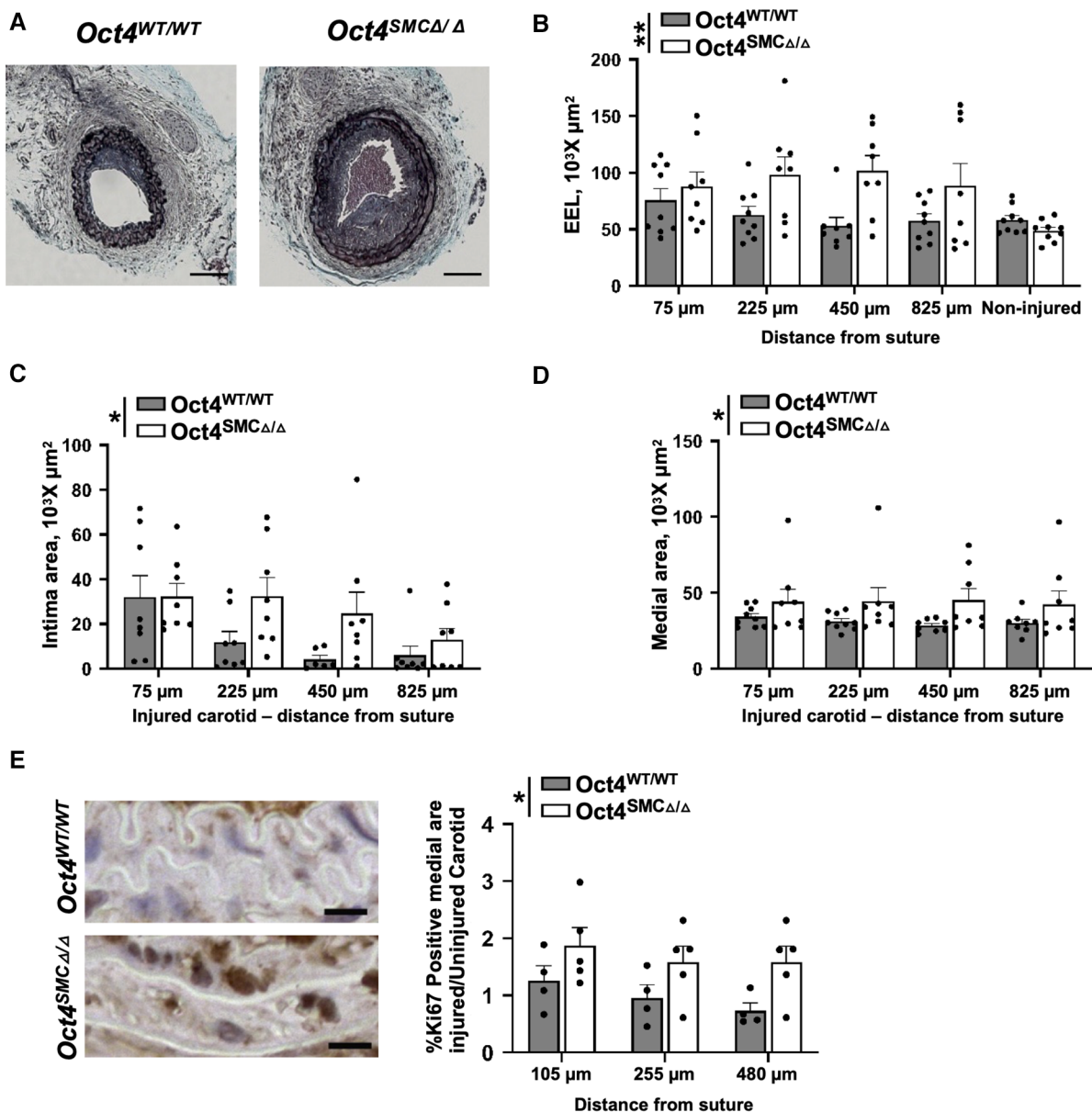


FIGURE 3

SMC-specific knockout of *Oct4* accelerated neointima formation and increased tunica media following carotid artery ligation injury. (A) Movat staining of representative injured carotid arteries of *Oct4*<sup>WT/WT</sup> and *Oct4*<sup>SMCΔ/Δ</sup> mice at day 21 post-carotid ligation injury. Scale bar = 50 μm. (B) Total vessel area within external elastic lamina (EEL), (C) intimal area (neointima), and (D) medial area. Number of injured mice used for analyses: *Oct4*<sup>WT/WT</sup> (*n* = 8) vs. *Oct4*<sup>SMCΔ/Δ</sup> (*n* = 9). (E) Ki67 staining of the representative carotid arteries of *Oct4*<sup>WT/WT</sup> and *Oct4*<sup>SMCΔ/Δ</sup> mice at day 3 post-carotid ligation injury. Scale bar = 10 μm. (F) Quantification of the Ki67 positive medial area of the ligated (left; Rc) vs. control unligated (right; Lc) carotid artery. Number of mice used for analyses: *Oct4*<sup>WT/WT</sup> (*n* = 4) vs. *Oct4*<sup>SMCΔ/Δ</sup> (*n* = 5). (B–D,F) Values represent mean ± s.e.m. \**P* < 0.05, \*\**P* < 0.01 by 2-way ANOVA (B–D) or non-parametric ANOVA (F) *Oct4*<sup>WT/WT</sup> vs. *Oct4*<sup>SMCΔ/Δ</sup> mice across multiple locations from the ligation suture.

proliferation of medial SMC. However, we cannot confidently answer the question of whether the increase in medial thickness is due to SMC hypertrophy and/or proliferation since we showed years ago that both involve increased DNA synthesis as hypertrophic SMC become polyploid (32).

### OCT4 is critical for maintaining SMC contractile state

Given that SMC proliferation is a characteristic of dedifferentiated SMC, we examined if *Oct4* is critical for

maintaining the contractile state of SMC. We found that OCT4 deficiency accelerated downregulation of SMC contractile gene expression, in that *Oct4*<sup>SMCΔ/Δ</sup> injured carotid arteries demonstrated lower expression of SMC contractile genes *Acta2* and *Tagln* compared to *Oct4*<sup>WT/WT</sup> 24 h post-injury (Figure 4A). In addition, immunohistochemistry staining for ACTA2 in injured carotid arteries on day 3 post-injury confirmed that loss of OCT4 in SMC accelerates suppression of this contractile protein within the tunica media (Figures 4B,C).

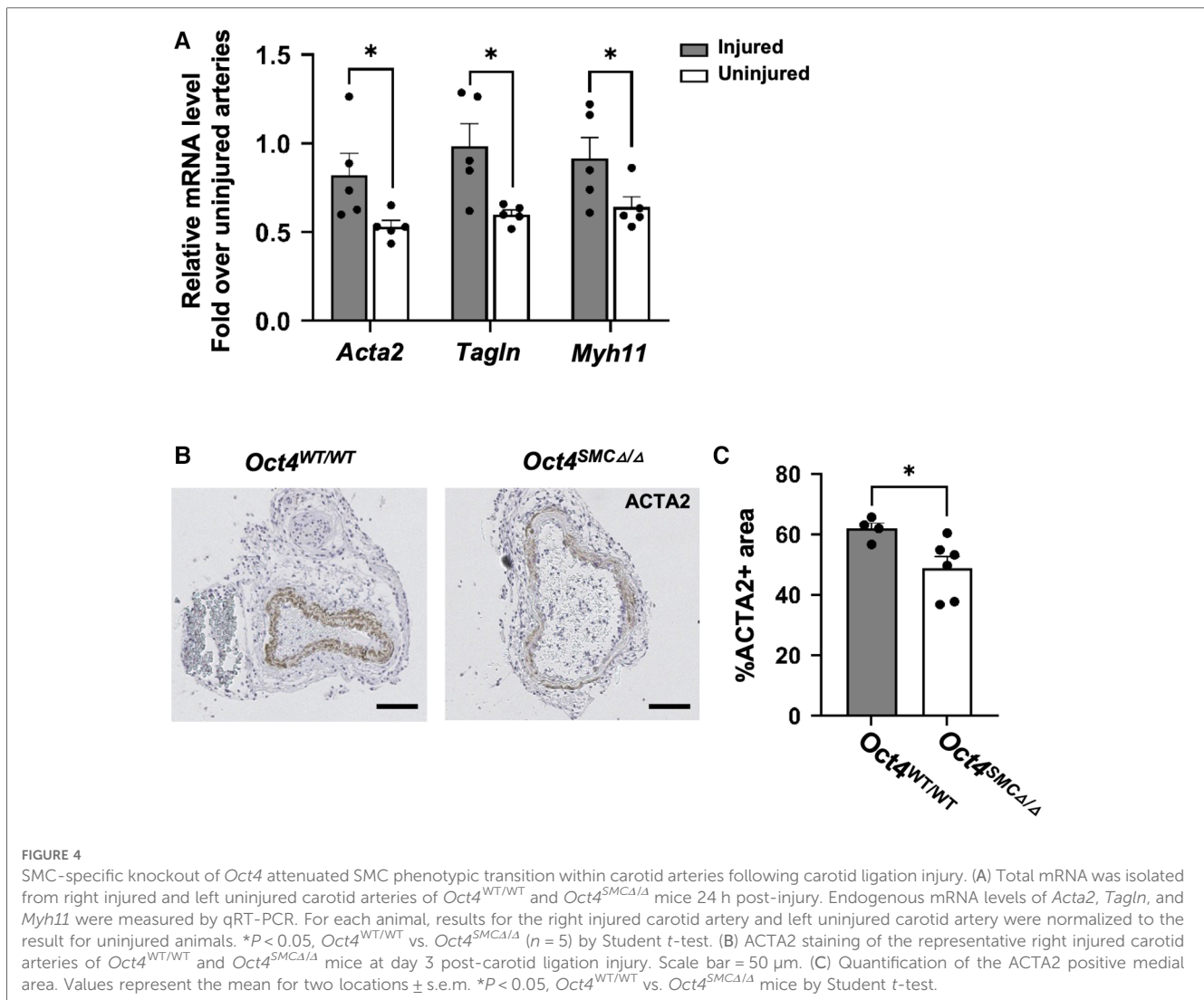


FIGURE 4

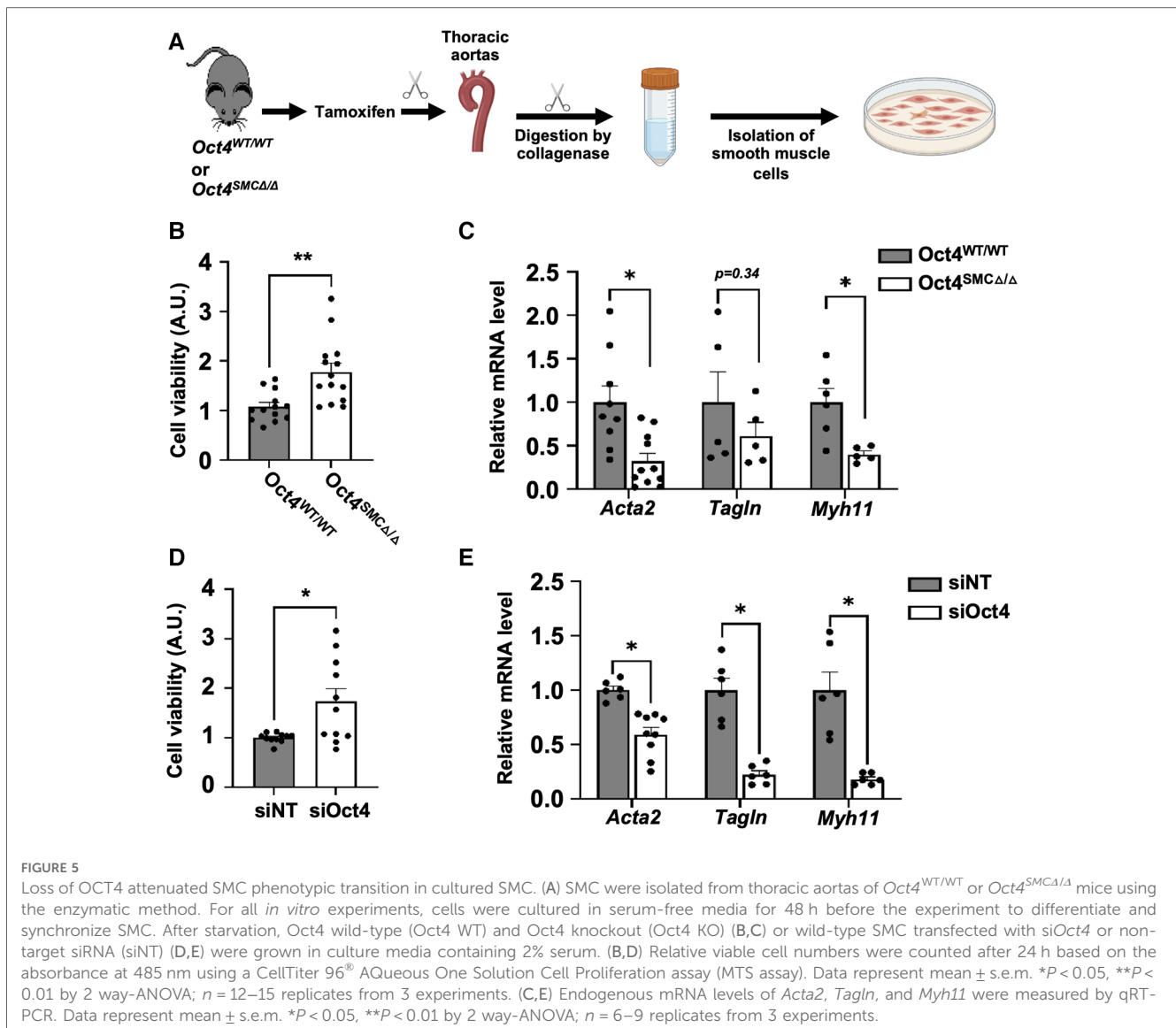
SMC-specific knockout of *Oct4* attenuated SMC phenotypic transition within carotid arteries following carotid ligation injury. (A) Total mRNA was isolated from right injured and left uninjured carotid arteries of *Oct4<sup>WT/WT</sup>* and *Oct4<sup>SMCΔ/Δ</sup>* mice 24 h post-injury. Endogenous mRNA levels of *Acta2*, *Tagln*, and *Myh11* were measured by qRT-PCR. For each animal, results for the right injured carotid artery and left uninjured carotid artery were normalized to the result for uninjured animals. \* $P < 0.05$ , *Oct4<sup>WT/WT</sup>* vs. *Oct4<sup>SMCΔ/Δ</sup>* ( $n = 5$ ) by Student *t*-test. (B) ACTA2 staining of the representative right injured carotid arteries of *Oct4<sup>WT/WT</sup>* and *Oct4<sup>SMCΔ/Δ</sup>* mice at day 3 post-carotid ligation injury. Scale bar = 50  $\mu\text{m}$ . (C) Quantification of the ACTA2 positive medial area. Values represent the mean for two locations  $\pm$  s.e.m. \* $P < 0.05$ , *Oct4<sup>WT/WT</sup>* vs. *Oct4<sup>SMCΔ/Δ</sup>* mice by Student *t*-test.

To further investigate the mechanisms whereby OCT4 regulates contractile SMC, SMC were isolated from the aortas of *Oct4<sup>SMCΔ/Δ</sup>* vs. *Oct4<sup>WT/WT</sup>* mice one week after the last tamoxifen injection (Figure 5A). We previously demonstrated that SMC from *Oct4<sup>SMCΔ/Δ</sup>* mice (*Oct4* KO) have ~96% of Flox locus recombination (5). *Oct4* KO SMC demonstrated increased growth rates (Figure 5B) compared to *Oct4* wild-type SMC (*Oct4* WT). Quantitative RT-PCR analysis showed that *Oct4* KO SMC had lower levels of SMC contractile genes, *Acta2*, *Tagln*, and *Myh11* (Figure 5C) compared to *Oct4* WT SMC. Importantly, the knockdown of *Oct4* using blocking siRNA resulted in similar increases in cell proliferation and suppression of SMC contractile genes (Figures 5D,E), indicating that these changes are not a result of the different adaptation of *Oct4* KO SMC to the cell culture condition.

Then, we conducted further mechanistic studies based on the observation that both the *Acta2* and *Tagln* proximal promoters contain conserved binding sites for OCT4 (Figure 6A). We have recently demonstrated that the pro-atherogenic phospholipid POVPC [1-palmitoyl-2-(oxovaleryl)-sn-glycero-3-phosphocholine]

is a potent repressor of SMC marker gene expression in vascular SMC, as well as in rat and mouse carotid arteries *in vivo* (8, 33). We also demonstrated that POVPC induces migration of cultured SMC, at least in part via OCT4 activation (33). Here, we found that treating mouse aortic SMC with POVPC was associated with a significant enrichment of OCT4 on the *Acta2* and *Tagln* promoters (Figures 6B,C).

Finally, to further assess OCT4-dependent gene profiles, we analyzed our previously published RNAseq in cultured *Oct4* KO vs. WT SMC (GSE75044). Our differential expression (DE) analysis demonstrated the marked dysregulation of genes related to the SMC contraction, including downregulation of contractile genes *Adcy8*, *Myh11*, *Mylk*, *Cald1*, *Acta2*, and *Myl6b* [GO:0045987], in *Oct4* KO SMC. (Figure 7A). In addition, our analysis revealed significant up-regulation of genes related to the positive regulation of SMC proliferation [*Igf1p5*, *Jun*, *Igf1p3*, *Itga2*, and *Myc* (GO:0048661)] in *Oct4* KO cells compared to wild-type cells (Figure 7B). These RNAseq analyses are consistent with the data showing that loss of OCT4 results in hyper-proliferation of SMCs. Also, we previously reported that



loss of OCT4 in SMC decreases SMC migration *in vitro* and *ex vivo* (5). Consistently with these decreases in cell migration, RNAseq analyses showed down-regulation of genes belonging to the positive regulation of SMC migration [*Vtn*, *Agt*, *Pcsk5*, and *Bcl2* (GO:0014911)] and up-regulation of genes belonging to the negative regulation of SMC migration [*Mef2c*, *Slit2*, *Ndr4*, and *Pparg* (GO0014912)] (Figures 7C,D). The molecular mechanisms responsible for the differences in cell migration vs. proliferation are not fully understood. Our RNAseq analyses in *Oct4* knockout and wild-type SMC demonstrate that loss of OCT4 resulted in dysregulation of genes, which might be responsible for the difference in SMC migration vs. proliferation responses. Future studies are needed to further understand this difference.

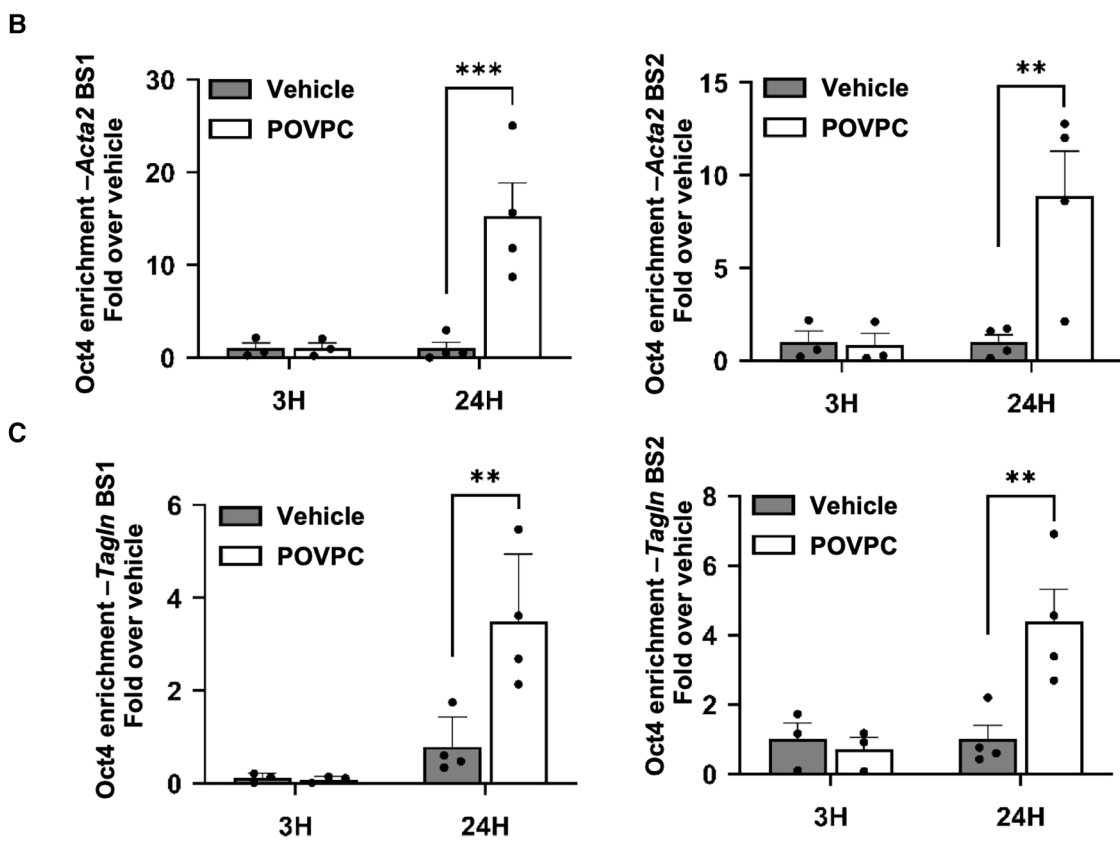
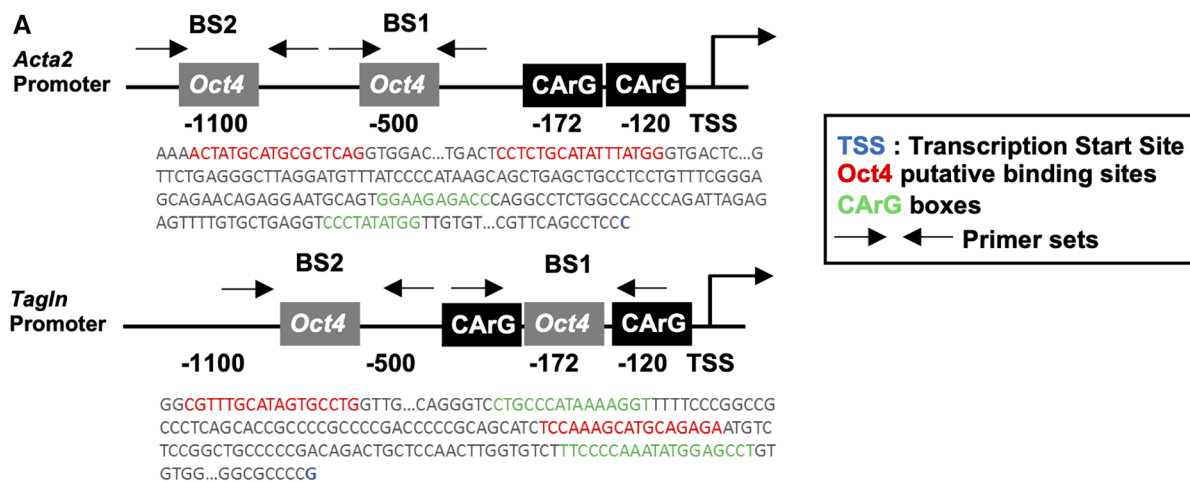
## Discussion

The pluripotency factor OCT4 is one of the essential transcriptional factors regulating the early stages of embryonic

development and one of the critical Yamanaka factors used for iPS cell transformations. Until recently, the dogma was that OCT4 is irreversibly epigenetically silenced in adult cells (34). However, we and others found that OCT4 is reactivated and plays functional role in vascular SMC (35, 36) in pathological conditions, including atherosclerosis, aortic aneurism, and pulmonary hypertension. We also demonstrated that OCT4 plays an important atheroprotective role by regulating SMC migration (5). Results of the current study demonstrate that OCT4 also has a critical role in SMC-dependent blood vessel wall remodeling after acute vascular injury, at least in part by promoting SMC contractile phenotype via direct interaction with SMC contractile genes, ACTA2 and TAGLN, and regulating expression of genes involved in inhibition of SMC proliferation.

We previously demonstrated that another pluripotency transcriptional factor KLF4 is a master regulator of SMC phenotypic switching, including both direct binding to the promoters of the SMC marker genes (28) and indirect effects of KLF4 via down-regulating the expression of the SMC-specific

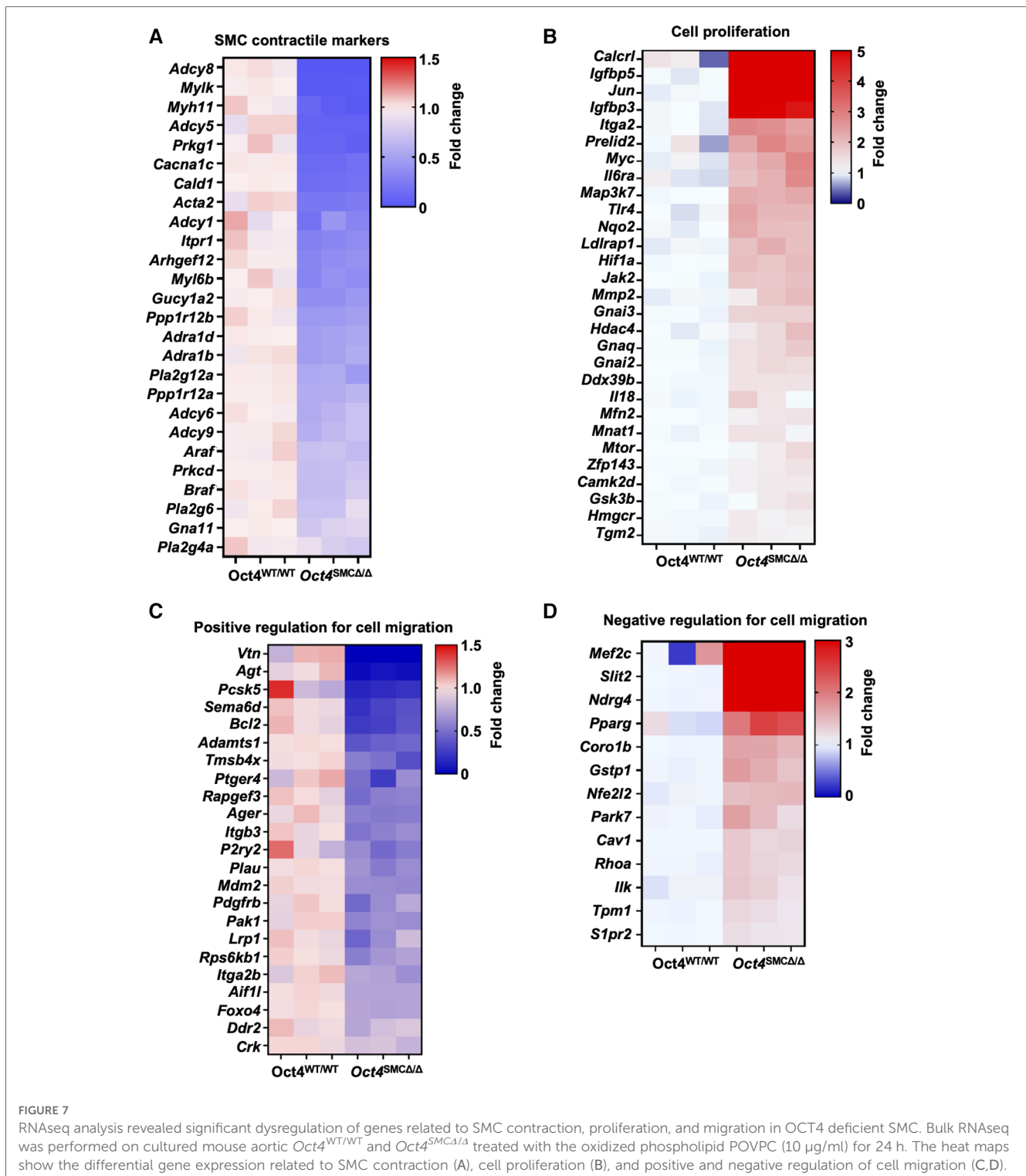




**FIGURE 6**  
 OCT4 regulates the expression of *Acta2* and *Tagln* via direct binding to the gene promoter elements. (A) Schematic representation of the *Acta2* and *Tagln* promoter regions. BS—binding site. (B,C) Mouse aortic SMC were treated with either POVPC (10 µg/mL) or DMSO-vehicle for 3 or 12 h. The enrichment of OCT4 on the promoter region of the *Acta2* (B) or *Tagln* (C) genes was determined by ChIP assays. Chromatin precipitated with antibody for OCT4 was subjected to the qRT-PCR. Results were normalized to the total Input and demonstrated as a fold-increased over vehicle. \**P* < 0.05 POVPC (10 µg/ml) vs. Vehicle control by Student's *t*-test.

serum response factor (SRF) coactivator myocardin and preventing SRF/myocardin complexes from associating with SMC gene promoters (11, 12). Although KLF4 positively regulates OCT4 in SMC (5), we observed that the genetic inactivation of KLF4 and OCT4 in SMC resulted in opposite effects on atherosclerosis development. Thus, conditional knockout of *Oct4*, specifically in SMC, led to marked increases in lesion size and decreases in multiple indices of plaque stability, including a less formed

fibrous cap, larger necrotic core, and increased intra-plaque hemorrhage (5). SMC-lineage tracing studies demonstrated a marked reduction in the numbers of SMC within lesions and the fibrous cap (5). Conversely, SMC-specific knockout of KLF4 resulted in smaller and more stable lesions (29). Importantly, SMC-specific knockout of KLF4 led to a decrease in SMC transition to multiple phenotypes, including LGALS3<sup>+</sup>SPP1<sup>+</sup> osteogenic-like cells (17). At the same time, previous studies



demonstrated that, similarly to OCT4, KLF4 deficiency resulted in hyper-proliferation of SMC *in vitro* and *in vivo* after carotid ligation injury (28) but inhibited migration of SMC *in vitro* (33). Our results herein provide evidence that OCT4 directly promotes differentiation of SMC that is opposite to KLF4, which suppresses SMC differentiation, but further highlights the importance of the pluripotency gene network in controlling SMC phenotypic transitions. Results are consistent with those of

Alencar et al. (17), showing that SMC-KLF4 and SMC-Oct4 KO mice exhibit virtually opposite transcriptomic signatures. Our new findings raise additional questions about the complexity of these pluripotency factor interactions to modulate SMC plasticity. It is interesting to speculate that the fine-tuning of these OCT4- and KLF4-dependent mechanisms and their crosstalk are responsible for the directivity of the SMC phenotypic transitions. In particular relevance, our *in vivo* ChIPseq analyses on

chromatin from mouse atherosclerotic arteries demonstrated that 39% of accepted human coronary artery disease (CAD) genome-wide association study (GWAS) loci (37) are the nearest gene binding targets of KLF4 or OCT4 specifically in SMC (17).

Given the massive change in gene expression in *Oct4* KO SMC compared to wild-type cells, the likely effect of OCT4 on SMC phenotypic transitions is very complex, affecting numerous molecular pathways simultaneously. This suggests that environmental cues (e.g., hypoxia, hyperlipidemia, inflammation, etc.) may contribute to the OCT4-dependent modulation of SMC transitions. For instance, we found that Toll-like receptor 4 (TLR4) was significantly upregulated in *Oct4* KO cells. Therefore, different TLR4 ligands would potentially induce different responses in SMC.

Importantly, we previously found that the lentivirus-driven overexpression of OCT4 resulted in increased migration and decreased proliferation of SMC (5). Moreover, we demonstrated that the knockdown of *Oct4* in SMC precursor cells (A404 (38)), expressing a high level of OCT4 and differentiating toward contractile SMC in response to all trans retinoic acid (at-RA), was sufficient to initiate the SMC differentiation program in these cells, including up-regulation of *Acta2* and *Tagln* (5). Although these “high OCT4 expression” experiments recapitulate the iPSC/stem cell state, they suggest that OCT4 plays a fundamental role in SMC not only in pathological conditions but also in SMC differentiation during embryonic development.

In conclusion, our current study provides evidence that the SMC-derived pluripotency factor OCT4 is critical for vascular remodeling in response to injury by regulating SMC contractility and proliferation. Future studies are needed to further elucidate endogenous OCT4-dependent upstream and downstream mechanisms of SMC phenotypic transitions.

## Data availability statement

The datasets presented in this study can be found in online repositories. The names of the repository/repositories and accession number(s) can be found in the article/**Supplementary Material**.

## Ethics statement

The animal studies were approved by The University of Virginia and Lerner Research Institute Animal Care and Use Committees. The studies were conducted in accordance with the local legislation and institutional requirements. Written informed consent was obtained from the owners for the participation of their animals in this study.

## Author contributions

JS: Writing – original draft, Data curation, Formal Analysis, Investigation, Validation. ST: Data curation, Formal Analysis,

Writing – review & editing, Investigation. DG: Data curation, Formal Analysis, Writing – review & editing, Validation. RT: Methodology, Validation, Investigation, Writing – review and editing. GO: Writing – review & editing, Conceptualization, Supervision. OC: Conceptualization, Supervision, Project administration, Writing – original draft, Formal Analysis, Investigation.

## Funding

The author(s) declare financial support was received for the research, authorship, and/or publication of this article.

This work was supported by US National Institute of Health (NIH) grants R01 HL150193 (to O.A.C.), R01 HL136314 (to G.K.O.), and R01 HL146465 (to D.G.).

## Acknowledgments

We thank Irene Krukovets and Aatish Mahajan (Lerner Research Institute, Cleveland Clinic), Melissa Bevard, and Elizabeth Greene (University of Virginia) for technical assistance; Tomas Cakulev for help with image analysis; Hans R. Schöler from the Max Plank Institute for Oct4 Flox mice; Stefan Offermanns from Max Plank Institute for Myh11-CreERT2 mice. We thank the University of Virginia Advanced Microscopy Core for their technical assistance.

## Conflict of interest

The authors declare that the research was conducted in the absence of any commercial or financial relationships that could be construed as a potential conflict of interest.

The author(s) declared that they were an editorial board member of *Frontiers*, at the time of submission. This had no impact on the peer review process and the final decision.

## Publisher's note

All claims expressed in this article are solely those of the authors and do not necessarily represent those of their affiliated organizations, or those of the publisher, the editors and the reviewers. Any product that may be evaluated in this article, or claim that may be made by its manufacturer, is not guaranteed or endorsed by the publisher.

## Supplementary material

The Supplementary Material for this article can be found online at: <https://www.frontiersin.org/articles/10.3389/fcvm.2023.1276945/full#supplementary-material>

## References

- Chamley-Campbell J, Campbell GR, Ross R. The smooth muscle cell in culture. *Physiol Rev.* (1979) 59:1–61. doi: 10.1152/physrev.1979.59.1.1
- Owens GK. Regulation of differentiation of vascular smooth muscle cells. *Physiol Rev.* (1995) 75:487–517. doi: 10.1152/physrev.1995.75.3.487
- Owens GK, Kumar MS, Wamhoff BR. Molecular regulation of vascular smooth muscle cell differentiation in development and disease. *Physiol Rev.* (2004) 84:767–801. doi: 10.1152/physrev.00041.2003
- Herring BP, Hoggatt AM, Burlak C, Offermanns S. Previously differentiated medial vascular smooth muscle cells contribute to neointima formation following vascular injury. *Vasc Cell.* (2014) 6:21. doi: 10.1186/2045-824X-6-21
- Cherepanova OA, Gomez D, Shankman LS, Swiatlowska P, Williams J, Sarmento OF, et al. Activation of the pluripotency factor OCT4 in smooth muscle cells is atheroprotective. *Nat Med.* (2016) 22:657–65. doi: 10.1038/nm.4109
- Dandre F, Owens GK. Platelet-derived growth factor-BB and Ets-1 transcription factor negatively regulate transcription of multiple smooth muscle cell differentiation marker genes. *Am J Physiol Heart Circ Physiol.* (2004) 286:H2042–51. doi: 10.1152/ajpheart.00625.2003
- Deaton RA, Gan Q, Owens GK. Sp1-dependent activation of KLF4 is required for PDGF-BB-induced phenotypic modulation of smooth muscle. *Am J Physiol Heart Circ Physiol.* (2009) 296, H1027–37. doi: 10.1152/ajpheart.01230.2008
- Pidkova NA, Cherepanova OA, Yoshida T, Alexander MR, Deaton RA, Thomas JA, et al. Oxidized phospholipids induce phenotypic switching of vascular smooth muscle cells in vivo and in vitro. *Circ Res.* (2007) 101:792–801. doi: 10.1161/CIRCRESAHA.107.152736
- Gomez D, Baylis RA, Durgin BG, Newman AAC, Alencar GF, Mahan S, et al. Interleukin-1beta has atheroprotective effects in advanced atherosclerotic lesions of mice. *Nat Med.* (2018) 24:1418–29. doi: 10.1038/s41591-018-0124-5
- Liu Y, Sinha S, McDonald OG, Shang Y, Hoofnagle MH, Owens GK. Kruppel-like factor 4 abrogates myocardium-induced activation of smooth muscle gene expression. *J Biol Chem.* (2005) 280:9719–27. doi: 10.1074/jbc.M412862200
- Salmon M, Gomez D, Greene E, Shankman L, Owens GK. Cooperative binding of KLF4, pELK-1, and HDAC2 to a G/C repressor element in the SM22alpha promoter mediates transcriptional silencing during SMC phenotypic switching in vivo. *Circ Res.* (2012) 111:685–96. doi: 10.1161/CIRCRESAHA.112.269811
- Yoshida T, Gan Q, Owens GK. Kruppel-like factor 4, elk-1, and histone deacetylases cooperatively suppress smooth muscle cell differentiation markers in response to oxidized phospholipids. *Am J Physiol Cell Physiol.* (2008a) 295, C1175–82. doi: 10.1152/ajpcell.00288.2008
- Riches-Suman K. Diverse roles of microRNA-145 in regulating smooth muscle (dys)function in health and disease. *Biochem Soc Trans.* (2021) 49:353–63. doi: 10.1042/BST20200679
- Shi H, Nguyen T, Zhao Q, Cheng P, Sharma D, Kim HJ, et al. Discovery of transacting long noncoding RNAs that regulate smooth muscle cell phenotype. *Circ Res.* (2023) 132, 795–811. doi: 10.1161/CIRCRESAHA.122.321960
- Dobnikar L, Taylor AL, Chappell J, Oldach P, Harman JL, Oerton E, et al. Disease-relevant transcriptional signatures identified in individual smooth muscle cells from healthy mouse vessels. *Nat Commun.* (2018) 9:4567. doi: 10.1038/s41467-018-06891-x
- Wirka RC, Wagh D, Paik DT, Pjanic M, Nguyen T, Miller CL, et al. Atheroprotective roles of smooth muscle cell phenotypic modulation and the TCF21 disease gene as revealed by single-cell analysis. *Nat Med.* (2019) 25:1280–9. doi: 10.1038/s41591-019-0512-5
- Alencar GF, Owsiany KM, Karnewar S, Sukhavi K, Mocci G, Nguyen AT, et al. Stem cell pluripotency genes Klf4 and Oct4 regulate Complex SMC phenotypic changes critical in late-stage atherosclerotic lesion pathogenesis. *Circulation.* (2020) 142:2045–59. doi: 10.1161/CIRCULATIONAHA.120.046672
- Pan H, Xue C, Auerbach BJ, Fan J, Bashore AC, Cui J, et al. Single-Cell genomics reveals a novel cell state during smooth muscle cell phenotypic switching and potential therapeutic targets for atherosclerosis in mouse and human. *Circulation.* (2020) 142:2060–75. doi: 10.1161/CIRCULATIONAHA.120.048378
- Bulut GB, Alencar GF, Owsiany KM, Nguyen AT, Karnewar S, Haskins RM, et al. KLF4 (kruppel-like factor 4)-dependent perivascular plasticity contributes to adipose tissue inflammation. *Arterioscler Thromb Vasc Biol.* (2021) 41:284–301. doi: 10.1161/ATVBAHA.120.314703
- Pedroza AJ, Tashima Y, Shad R, Cheng P, Wirka R, Churovich S, et al. Single-Cell transcriptomic profiling of vascular smooth muscle cell phenotype modulation in marfan syndrome aortic aneurysm. *Arterioscler Thromb Vasc Biol.* (2020) 40:2195–211. doi: 10.1161/ATVBAHA.120.314670
- Misra A, Feng Z, Chandran RR, Kabir I, Rotlan N, Aryal B, et al. Integrin beta3 regulates clonality and fate of smooth muscle-derived atherosclerotic plaque cells. *Nat Commun.* (2018) 9:2073. doi: 10.1038/s41467-018-04447-7
- Chappell J, Harman JL, Narasimhan VM, Yu H, Foote K, Simons BD, et al. Extensive proliferation of a subset of differentiated, yet plastic, medial vascular smooth muscle cells contributes to neointimal formation in mouse injury and atherosclerosis models. *Circ Res.* (2016) 119:1313–23. doi: 10.1161/CIRCRESAHA.116.309799
- Liu M, Gomez D. Smooth muscle cell phenotypic diversity. *Arterioscler Thromb Vasc Biol.* (2019) 39:1715–23. doi: 10.1161/ATVBAHA.119.312131
- Hess DL, Kelly-Goss MR, Cherepanova OA, Nguyen AT, Baylis RA, Tkachenko S, et al. Perivascular cell-specific knockout of the stem cell pluripotency gene Oct4 inhibits angiogenesis. *Nat Commun.* (2019) 10:967. doi: 10.1038/s41467-019-08811-z
- Kumar A, Lindner V. Remodeling with neointima formation in the mouse carotid artery after cessation of blood flow. *Arterioscler Thromb Vasc Biol.* (1997) 17:2238–44. doi: 10.1161/01.ATV.17.10.2238
- Kehler J, Tolkunova E, Koschorz B, Pesce M, Gentile L, Boiani M, et al. Oct4 is required for primordial germ cell survival. *EMBO Rep.* (2004) 5:1078–83. doi: 10.1038/sj.embo.7400279
- Wirth A, Benyo Z, Lukasova M, Leutgeb B, Wettschureck N, Gorbey S, et al. G12-G13-LARG-mediated signaling in vascular smooth muscle is required for salt-induced hypertension. *Nat Med.* (2008) 14:64–8. doi: 10.1038/nm1666
- Yoshida T, Kaestner KH, Owens GK. Conditional deletion of kruppel-like factor 4 delays downregulation of smooth muscle cell differentiation markers but accelerates neointimal formation following vascular injury. *Circ Res.* (2008b) 102:1548–57. doi: 10.1161/CIRCRESAHA.108.176974
- Shankman LS, Gomez D, Cherepanova OA, Salmon M, Alencar GF, Haskins RM, et al. KLF4-dependent Phenotypic modulation of smooth muscle cells has a key role in atherosclerotic plaque pathogenesis. *Nat Med.* (2015) 21:628–37. doi: 10.1038/nm.3866
- Liedtke S, Stephan M, Kogler G. Oct4 expression revisited: potential pitfalls for data misinterpretation in stem cell research. *Biol Chem.* (2008) 389:845–50. doi: 10.1515/BC.2008.098
- Lengner CJ, Camargo FD, Hochedlinger K, Welstead GG, Zaidi S, Gokhale S, et al. Oct4 expression is not required for mouse somatic stem cell self-renewal. *Cell Stem Cell.* (2007) 1:403–15. doi: 10.1016/j.stem.2007.07.020
- Owens GK. Control of hypertrophic versus hyperplastic growth of vascular smooth muscle cells. *Am J Physiol.* (1989) 257:H1755–65. doi: 10.1152/ajpheart.1989.257.6.H1755
- Cherepanova OA, Pidkova NA, Sarmento OF, Yoshida T, Gan Q, Adiguzel E, et al. Oxidized phospholipids induce type VIII collagen expression and vascular smooth muscle cell migration. *Circ Res.* (2009) 104, 609–18. doi: 10.1161/CIRCRESAHA.108.186064
- Feldman N, Gerson A, Fang J, Li E, Zhang Y, Shinkai Y, et al. G9a-mediated irreversible epigenetic inactivation of oct-3/4 during early embryogenesis. *Nat Cell Biol.* (2006) 8:188–94. doi: 10.1038/ncb1353
- Yan Y, Tan MW, Xue X, Ding XY, Wang GK, Xu ZY. Involvement of Oct4 in the pathogenesis of thoracic aortic dissection via inducing the dedifferentiated phenotype of human aortic smooth muscle cells by directly upregulating KLF5. *J Thorac Cardiovasc Surg.* (2016) 152, 820–829.e4. doi: 10.1016/j.jtcvs.2016.05.036
- Firth AL, Yao W, Remillard CV, Ogawa A, Yuan JX. Upregulation of oct-4 isoforms in pulmonary artery smooth muscle cells from patients with pulmonary arterial hypertension. *Am J Physiol Lung Cell Mol Physiol.* (2010) 298:L548–57. doi: 10.1152/ajplung.00314.2009
- Erdmann J, Kessler T, Munoz Venegas L, Schunkert H. A decade of genome-wide association studies for coronary artery disease: the challenges ahead. *Cardiovasc Res.* (2018) 114:1241–57. doi: 10.1093/cvr/cvy084
- Manabe I, Owens GK. Recruitment of serum response factor and hyperacetylation of histones at smooth muscle-specific regulatory regions during differentiation of a novel P19-derived in vitro smooth muscle differentiation system. *Circ Res.* (2001) 88:1127–34. doi: 10.1161/01.091339