



## OPEN ACCESS

## EDITED BY

Nathalie Pamir,  
Oregon Health and Science University,  
United States

## REVIEWED BY

Prof. Nilesh Kumar Sharma,  
Dr. D. Y. Patil Biotechnology &  
Bioinformatics Institute, India  
Hanrui Zhang,  
Columbia University, United States

## \*CORRESPONDENCE

Tamer Sallam  
tsallam@mednet.ucla.edu

## SPECIALTY SECTION

This article was submitted to  
Lipids in Cardiovascular Disease,  
a section of the journal  
Frontiers in Cardiovascular Medicine

RECEIVED 21 April 2022

ACCEPTED 22 July 2022

PUBLISHED 09 August 2022

## CITATION

Bhatnagar R, Dixit NM, Yang EH and  
Sallam T (2022) Cancer therapy's  
impact on lipid metabolism:  
Mechanisms and future avenues.  
*Front. Cardiovasc. Med.* 9:925816.  
doi: 10.3389/fcvm.2022.925816

## COPYRIGHT

© 2022 Bhatnagar, Dixit, Yang and  
Sallam. This is an open-access article  
distributed under the terms of the  
[Creative Commons Attribution License  
\(CC BY\)](https://creativecommons.org/licenses/by/4.0/). The use, distribution or  
reproduction in other forums is  
permitted, provided the original  
author(s) and the copyright owner(s)  
are credited and that the original  
publication in this journal is cited, in  
accordance with accepted academic  
practice. No use, distribution or  
reproduction is permitted which does  
not comply with these terms.

# Cancer therapy's impact on lipid metabolism: Mechanisms and future avenues

Roshni Bhatnagar<sup>1</sup>, Neal M. Dixit<sup>1</sup>, Eric H. Yang<sup>1,2</sup> and  
Tamer Sallam<sup>1,3,4\*</sup>

<sup>1</sup>Department of Medicine, David Geffen School of Medicine, University of California, Los Angeles, Los Angeles, CA, United States, <sup>2</sup>UCLA Cardio-Oncology Program, Division of Cardiology, Department of Medicine, University of California, Los Angeles, Los Angeles, CA, United States, <sup>3</sup>Division of Cardiology, David Geffen School of Medicine, University of California, Los Angeles, Los Angeles, CA, United States, <sup>4</sup>Molecular Biology Institute, University of California, Los Angeles, Los Angeles, CA, United States

Atherosclerotic cardiovascular disease is a growing threat among cancer patients. Not surprisingly, cancer-targeting therapies have been linked to metabolic dysregulation including changes in local and systemic lipid metabolism. Thus, tumor development and cancer therapeutics are intimately linked to cholesterol metabolism and may be a driver of increased cardiovascular morbidity and mortality in this population. Chemotherapeutic agents affect lipid metabolism through diverse mechanisms. In this review, we highlight the mechanistic and clinical evidence linking commonly used cytotoxic therapies with cholesterol metabolism and potential opportunities to limit atherosclerotic risk in this patient population. Better understanding of the link between atherosclerosis, cancer therapy, and cholesterol metabolism may inform optimal lipid therapy for cancer patients and mitigate cardiovascular disease burden.

## KEYWORDS

lipid metabolism, atherosclerotic disease, chemotherapy, tumor microenvironment, cytotoxic therapy, metabolic dysregulation

## Introduction

Dysregulation in lipid signaling is a critical factor for development of atherosclerotic cardiovascular disease (ASCVD). Heightened appreciation for the “causal” association between low density lipoprotein (LDL) levels and ASCVD inspired new paradigms for cardiovascular risk mitigation including stringent emphasis on lipid lowering therapies and a “lower is better” approach for risk reduction (1, 2). However, the influence of dyslipidemia in ASCVD is not uniform across different cohorts, including patients with cancer. In the United States (US), over 17 million patients are survivors of cancer; of which nearly half underwent cytotoxic treatment (3). Cancer biology and therapeutics are strongly linked to changes in cholesterol metabolism and the risk of developing ASCVD (4). The field of “Cardio-Oncology” arose from the need to understand cardiotoxicity of cancer therapeutics, as well as the cross-over mechanisms between cancer biology and cardiovascular physiology (5). Some studies have demonstrated alterations in lipid levels among patients with untreated cancer, suggesting an effect of cancer on lipid homeostasis at a mechanistic level independent of cancer therapeutics, but this area requires further research (6, 7).

While the cardiotoxic effects of cancer therapeutics, particularly cytotoxic therapies, remain a growing area of research, the direct study of the interweaving of cancer biology, cancer therapeutics, and pathophysiology of ASCVD is less common. Cancer and ASCVD share similar risk factors such as age, tobacco use, and diabetes. However, even after controlling for these risk factors, there is still a strong association between cancer and ASCVD and data indicates that those with a personal history of cancer have 3.42 higher odds of having an elevated ASCVD risk score (8, 9). Likewise, a study of over 6,000 participants of the Multi-Ethnic Study on Atherosclerosis found that those with coronary artery calcium (CAC) score >400 had over 50% increased risk of developing incident cancer over 10 years, even after adjusting for smoking, body mass index, physical activity, hypertension, statin use, and other demographic factors (10). Additionally, recent evidence suggests that hematologic risk factors such as clonal hematopoiesis of indeterminate potential (CHIP) may be linked to accelerated risk of myocardial infarction and poorer prognosis in aortic stenosis and heart failure (11–13). Despite clinical evidence of a link between cancer biology, cancer therapeutics, and the development of atherosclerosis, the exact mechanisms are yet to be elucidated. Moreover, half of cancer survivors do not receive lipid lowering therapy, even though they are eligible (14). In this review, we expand on the interweaving of cytotoxic therapies with cholesterol metabolism, review consequences for increased ASCVD risk in cancer survivors, and suggest strategies for prevention of ASCVD in this high-risk population (Figure 1).

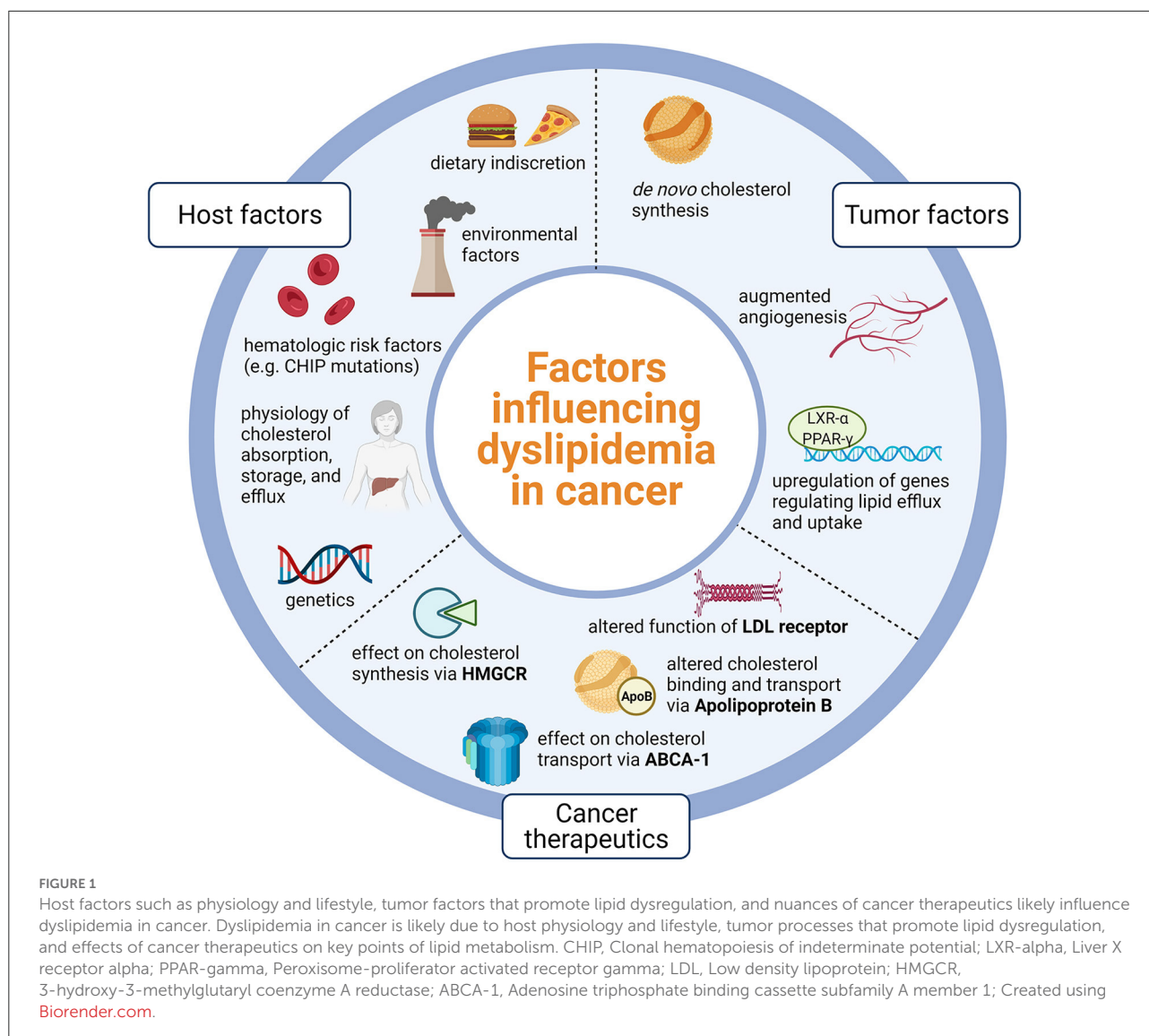
## Overview of lipid biology and atherosclerosis formation

Tight regulation of cellular cholesterol stores involves a complex interplay of enzymes that synthesize, absorb, export, and transport cholesterol (Figure 2) (15, 16). Cholesterol is absorbed from the intestine by the intracellular lipid transporter NPC1L1. NPC1L1 is the target of the cholesterol lowering drug ezetimibe. Although the intestine plays a key role in maintaining cholesterol levels, most cholesterol stores are synthesized *de novo* in the liver. Thus, the liver acts as a master regulator of systemic cholesterol levels and is involved in intricate crosstalk with other metabolically active organs and peripheral tissues to maintain cholesterol homeostasis. Cholesterol biosynthesis requires the coordinated activity of multiple intracellular proteins including the rate limiting enzyme 3-hydroxy-3-methylglutaryl coenzyme A reductase (HMGCR). The liver also regulates the uptake of LDL by regulating the activity of the LDL receptor (LDLR). Both HMGCR and the LDLR are regulated by sterol regulatory element binding transcription factor 2 (SREBP2), which translocates to the nucleus in response to low endoplasmic reticulum cholesterol content to enhance lipid uptake and

biogenesis (17). The Liver X receptor (LXR) counterbalances the activity of the SREBPs to maintain cholesterol homeostasis. When cellular lipid stores are high, LXRs are activated and turn on a battery of genes involved in increasing lipid efflux, reversing cholesterol transport and limiting lipid uptake (18). A key gene regulated by LXR is adenosine triphosphate binding cassette subfamily A member 1 (ABCA1), a cell membrane protein that allows for cholesterol efflux from cells. ABCA1 is required for high density lipoprotein (HDL) biogenesis, efflux of cholesterol from macrophages, and reverse transport of cholesterol to the liver (19). Thus, LXR activity within lesions is atheroprotective. Atherosclerosis begins to form as apolipoprotein B lipoproteins accumulate within vessel walls beneath the endothelial lining. This process triggers a maladaptive response that leads to recruitment and proliferation of cells within lesions. Macrophages are key cells within lesions which couple metabolic and immune signaling. The recruitment of monocytes and macrophages and their proliferation within lesions under lipid-rich conditions can lead to lesion progression and many of the hallmark features of advanced plaque including necrotic core buildup, smooth muscle activation, and accumulation of fibrous elements (20). These processes form the basis of major cardiovascular events such as myocardial infarction and stroke (16).

## Cytotoxic therapy and ASCVD risk

A portion of the increased ASCVD risk seen after cancer diagnosis is driven by shared risk factors that predispose to both ASCVD and cancer, such as diabetes mellitus, obesity, and metabolic syndrome (21). However, the cytotoxic therapies involved in cancer treatment can also be a risk factor for ASCVD. In a longitudinal study of 1,413 breast cancer patients with ASCVD, those receiving chemotherapy had 1.7 times higher risk of death due to ASCVD than those not receiving chemotherapy (22). Notably, the difference in mortality was not seen until 7 years post-breast cancer diagnosis, likely reflective of the relatively slow progression of ASCVD. Beyond breast cancer, a population cohort study in the United Kingdom found higher risk of coronary artery disease in patients treated with chemotherapy alone for non-Hodgkins lymphoma and a trend toward higher risk in those treated with chemotherapy for lung and breast cancer (23). Immunotherapy and radiation therapy have also been linked to acceleration of atherosclerosis (24, 25). A fundamental issue in this area is the degree to which increased ASCVD risk is attributable to the underlying cancer, cytotoxic therapies, or both. A recent study assessing incident ASCVD among cancer patients found that those with cancer had nearly double the risk of developing ASCVD compared to the population of patients without ASCVD (23.1 vs. 12.0% age-adjusted incidence over 13 years of follow-up). The risk of developing ASCVD was highest among survivors of breast, lung,



colorectal, and hematologic cancers, which was independent of traditional cardiovascular risk factors (26). Given the treatability of most cancers, it is unlikely that future studies will evaluate participants with untreated cancer. However, further study of ASCVD risk among cancer patients receiving cytotoxic therapy paired with basic science investigations of these therapies may better elucidate the impact of cytotoxic therapy on ASCVD risk.

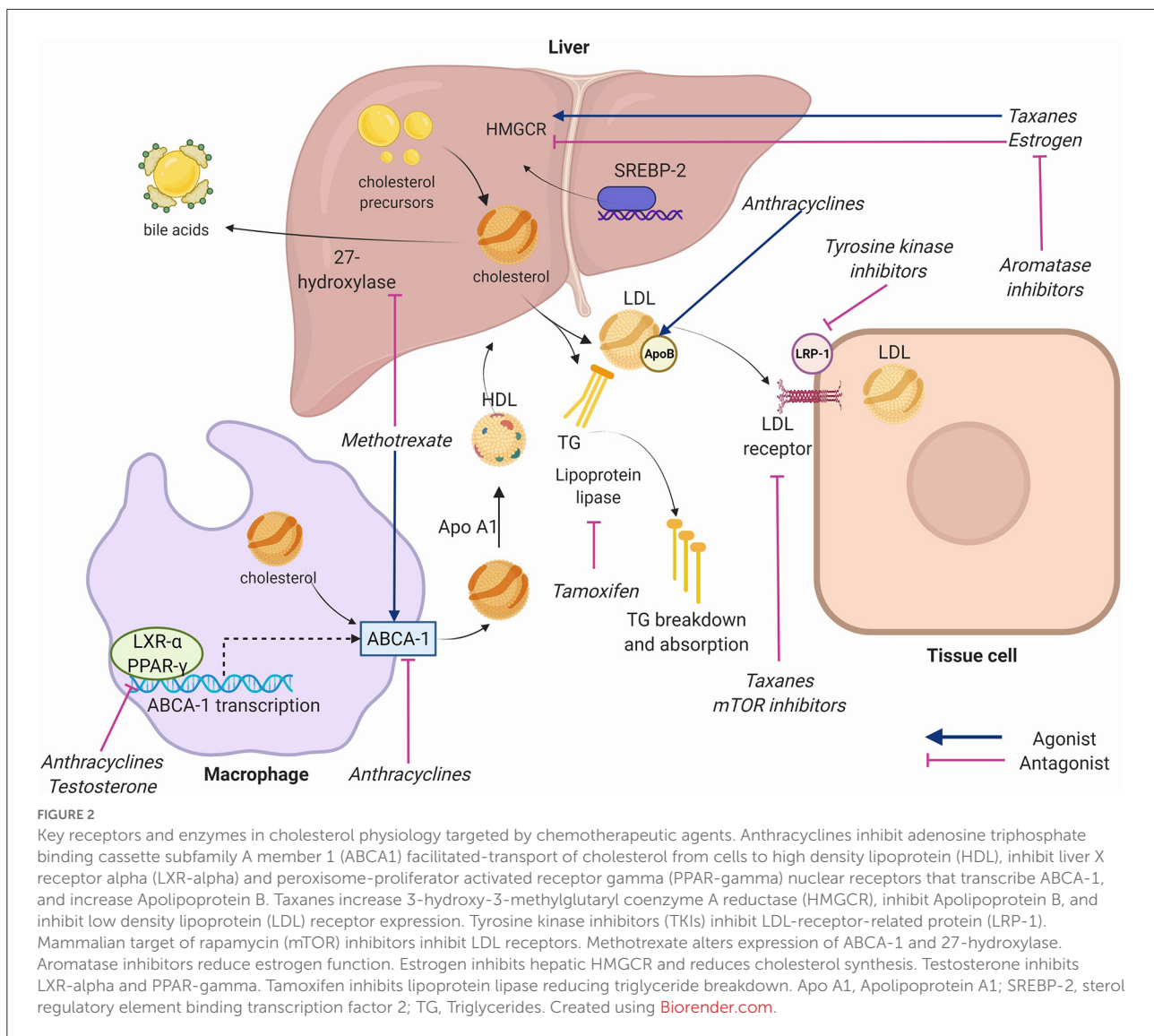
As survival among cancer patients improves, the increased risk of death from ASCVD is magnified (27). For example, in breast cancer patients, upwards of 80% of patients are living 5 years after diagnosis (28). Additionally, cytotoxic treatment is becoming a “chronic therapy:” evidence shows duration of chemotherapy and immunotherapy correlates with survival for many cancers (29–31). As cancer survivors live longer and receive more cumulative cytotoxic therapy, they become more likely to die from ASCVD, emphasizing the importance of ASCVD prevention and treatment in this population.

Table 1 summarizes the known effects of cancer therapies on cholesterol homeostasis.

## Effects of chemotherapeutic agents by class on cholesterol homeostasis

### Anthracyclines

Anthracyclines are among the most widely used chemotherapy agents (32). Their main mechanism of action is *via* topoisomerase II inhibition, mitochondrial impairment, and generation of reactive oxygen species that result in inhibition of DNA and RNA synthesis (33). The most prominent cardiotoxic effect of these drugs is development of cardiomyopathy, however, additional studies have shown a dyslipidemia-inducing effect of anthracycline therapy which may predispose to ASCVD (34–36).



Anthracyclines have been shown to impact ABCA1 and cholesterol efflux perhaps by interfering with the activity of the upstream regulators LXR-alpha and PPAR-gamma (37). The mechanism of anthracycline-induced atherosclerosis pathways was investigated by Sharma et al. in their study of the *in vivo* effects of doxorubicin, epirubicin, and other agents on human hepatocytes, isolating the effect of each chemotherapy agent on genes involved in lipid metabolism (38). Their study showed that doxorubicin was associated with decreased mRNA transcription of ABCA1. Overall impairment by doxorubicin resulted in a dose-dependent 20–30% cholesterol efflux in their cell model. A similar effect was seen with epirubicin (38). In a study of doxorubicin-treated myocytes and a mouse model, doxorubicin-treated cells exhibited higher cholesterol and cholesterol precursor levels (39). Sharma et al. also showed that anthracyclines reduced HMGCR activity, which in theory

should reduce LDL levels (38). Others have shown a significant increase in apolipoprotein B, a known risk factor for ASCVD, with anthracycline use (37).

Clinical studies by Lu et al. (34) and He et al. (36) showed a consistent association of increased total cholesterol (TC), LDL, and triglycerides (TG) measured at the conclusion of anthracycline-predominant combination chemotherapy in a combined sample of over 1,100 patients. Anthracycline effect on HDL was less consistent and was associated with decreased levels in the former study, in line with the decrease in ABCA1 reported in the above mechanistic studies. Limited long-term studies have evaluated lipid levels after anthracycline therapy in isolation, so the duration of this effect is less clear. However, in a group of 433 patients with early breast cancer, Arpino et al. (40) showed anthracycline therapy, in combination with cyclophosphamide followed by taxane therapy, was associated with elevations in

TABLE 1 Known effects of cancer therapies on lipid profile and CV risk<sup>a</sup>.

Class of agent	Strength of evidence	TC	LDL	HDL	TG	Long-term CV risk
Anthracycline	Moderate	↑	↑	↔	↑	↑
Taxane	Moderate	↔	↔	↔	↑	?
TKI (Bcr-Abl)	Low	↔	↔	↑	↓	?
TKI (VEGF)	Moderate	↑	↑	↑	↑	↑
mTOR inhibitor	Low	↑	?	?	?	↓
Alkylating agent	Moderate	↑	↓	↑	↑	?
Platinum	Low	↔	↔	↔	↔	↔
Anti-metabolite	Low	↑	↓	↑	↑	?
ADT	Moderate	↑	↑	↑	↑	↑
AI	Moderate	↑	↔	↓	↔	↑
SERM	High	↓	↓	↑	↔	↓
Radiation therapy	Low	?	?	?	?	↑
Immunotherapy	Low	?	?	?	?	↑
Stem-Cell therapy	Low	?	?	?	?	↑

Increased.

Decreased.

Variable effect.

? Unknown.

<sup>a</sup>Please see Supplementary Table 1 for a full set of references used to create this table.

ADT, androgen deprivation therapy; AI, aromatase inhibitor; CV, cardiovascular; HDL, high-density lipoprotein; LDL, low-density lipoprotein, mTOR, mammalian target of rapamycin; SERM, selective estrogen receptor modulator; TC, total cholesterol; TG, triglyceride; TKI, tyrosine kinase inhibitor.

TC, LDL, and TG at 24 months of follow up. This provides some evidence that the duration of anthracycline effect on lipid metabolism is durable. Overall, multiple lines of evidence across basic science and clinical studies suggest that anthracyclines may play a role in promoting dyslipidemia, but further study is required.

### Taxanes

Taxanes act primarily by stabilizing GDP-bound tubulin in microtubules, preventing effective function of microtubules for cell division (41). They are versatile drugs used to treat various solid tumors, and are a core component of breast cancer therapy (41). In a study of 80 women with breast cancer, a single infusion of paclitaxel was shown to effect expression of at least 188 proteins (42). Proteomic analysis showed that many of these proteins were crucial in lipid metabolism, especially those that involve lipoproteins. Sharma et al. (38) demonstrated increased HMGCR activity in human hepatocytes induced by paclitaxel. Additionally, reduced apolipoprotein-B activity and LDL receptor expression (important for clearance of LDL from the blood stream) were noted with paclitaxel.

Because taxanes are used almost exclusively as combination therapy (often with anthracyclines), it is difficult to assess their unique impact on *in vivo* lipid metabolism. In a sub-group analysis of patients who received regimens with and without taxane therapy,

He et al. (36) showed that taxane-containing regimens resulted in higher magnitude of dyslipidemia than non-taxane containing regimens. Other studies similarly suggest that taxane-inclusive regimens are associated with dyslipidemia especially when used in combination with anthracyclines (34, 35, 40).

### Tyrosine kinase inhibitors

Tyrosine kinase inhibitors (TKIs) are a mainstay of therapy for gastrointestinal, genitourinary, hematologic, and lung cancers. They are a diverse class of agents targeting various kinases involved in pathways related to tumor angiogenesis. The off-target effects of TKIs can impact lipid metabolism or promote cardiotoxic side effects. Imatinib, a first-generation TKI targeting BCR-ABL1, reduces cytoplasmic phosphorylation of LDL receptor related protein, a key component of LDL signaling that is involved in activating lysosomal enzymes, glucose-induced insulin secretion, and cholesterol metabolism. For example, in a study of rabbits fed a high cholesterol diet, imatinib therapy reduced cholesterol levels and the toxic effects produced by hyperlipidemia in the aorta and liver. These effects were mediated *via* significant decreases in lipid levels, C-reactive protein, and hepatic and other enzymes, suggesting that multiple pathways are involved in the atherosclerotic and vasculo-toxic effects of imatinib (43). Other TKIs that act on PDGF-R may have a similar effect (44), while TKIs that act *via* different target receptors may have opposing or synergistic effects.

## Hematologic cancers

TKIs are a key therapeutic agent in chronic myelogenous leukemia (CML) (45). Since imatinib revolutionized CML therapy, multiple other TKIs targeting various receptor pathways have entered the market (45). Second generation agents include nilotinib, dasatinib, and bosutinib. Ponatinib is a third-generation agent used in cases of treatment failure (45). Though the mechanisms through which TKI therapies alter cardiovascular physiology are poorly understood, clinical data suggests numerous cardiotoxic side effects.

As a class, BCR-ABL1 TKIs have been found to have varying toxic effects, including adverse events that may be lipid-independent, such as vascular toxicity, cardiotoxicity, and pulmonary hypertension (45). Among vascular toxicities, peripheral arterial disease, cerebral vascular accidents, ischemic heart disease, hypertension, and hyperglycemia are a few of the better-known adverse effects (46, 47). The first-generation agent imatinib likely has a protective effect on lipid metabolism. In a case series of 9 patients with hyperlipidemia and CML, 8 of 9 patients experienced normalization of lipid levels within 30 days of starting imatinib without the use of cholesterol-lowering agents (44). In a study of 40 patients with CML, of whom 19 were on statin therapy concurrently, after 3 months of imatinib treatment TC, TG, LDL, and non-HDL cholesterol decreased while HDL increased. The lipid-lowering effect of imatinib was similar between the statin and non-statin groups (48). Further research is needed to identify the intermediaries through which this effect occurs, as well as its clinical implications considering long-term use of lipid-lowering agents.

Studies to date on TKI therapy suggest that imatinib may have an atheroprotective effect, while other TKIs may have a more deleterious effect. Ponatinib targets a gatekeeper mutation in the BCR-ABL protein, T3151, that confers resistance to other TKIs among CML patients, but after approval was noted to be linked to myocardial infarction or stroke in 24–48% of patients (49). One study using mouse models suggests that imatinib and ponatinib decrease plasma cholesterol levels and that imatinib can increase plaque stability. The same study found that ponatinib and nilotinib may increase mRNA expression of coagulation factors that activate the clotting cascade, thus inducing a prothrombotic state that may be the driver of increased vascular adverse events (50).

Compared to imatinib, nilotinib, and dasatinib have shown greater affinity for the BCR-ABL1 tyrosine kinase protein and thus more effective BCR-ABL1 inhibition, largely replacing imatinib as first line therapy for CML (51). In small studies available to date, nilotinib as first or second line therapy for CML was associated with increased TC, LDL, and HDL, higher risk of peripheral arterial disease, and worsened glycemic profile, suggesting lipid-dependent and lipid-independent toxicity (52–54). In another study of 57 patients with CML treated with either imatinib or nilotinib, imatinib was associated with a significant increase in HDL and decrease in TG and a non-significant

decrease in TC and LDL from baseline compared to 6 month follow up. Nilotinib was associated with a significant increase in TC, LDL, and HDL and a decrease in TG, similar to prior studies (55). Overall, among agents active against BCR-ABL, it appears nilotinib increases risk of dyslipidemia, imatinib may decrease risk, and risk with other agents requires further study. The mechanism for these disparate effects among similar agents is not yet understood.

## Solid tumors

Lipid-modulating effects of the more novel TKIs used in gastrointestinal, genitourinary, and lung malignancies are still being elucidated. In a study of 299 patients with lung cancer, patients treated with gefitinib (an EGFR TKI) had lower TC levels after 30 days of treatment (56). Lorlatinib, a third generation TKI used in ALK-positive non-small cell lung cancer, was found to induce hypercholesterolemia in 82.4% of patients and hypertriglyceridemia in 60.7% of patients. The mechanism of this effect is not known; however, one hypothesis is that lorlatinib has off-target effects on tropomyosin receptor kinase B (TrK-B), which is involved in cholesterol recognition (57, 58). Sunitinib, a novel TKI that acts on FGF, VEGF, and PDGF-R, was found to increase TC, LDL, HDL, non-HDL cholesterol, and TG in a study of 127 patients with metastatic renal cell carcinoma, of which 79 were receiving the drug. Paradoxically, higher increase in serum lipids, particularly in all 5 parameters, was associated with better progression-free survival and overall survival in this study (59). Additional studies to confirm this paradoxical relationship between increased lipid levels and better overall survival are warranted, and at the very least suggest that lipid metabolism is an important factor but not the only one in determining mortality risk in TKI recipients.

## Mechanistic target of rapamycin inhibitors

The mechanistic Target of Rapamycin (mTOR) signaling pathway is involved in regulation of gene transcription and protein synthesis related to cell proliferation and immune cell differentiation (60). Primarily used as anti-rejection agents, mTOR inhibitors such as everolimus and temsirolimus are sometimes used as targeted anti-neoplastic therapy. mTOR inhibitors increase TG and LDL levels by reduced expression of lipogenic enzymes and LDL receptors, respectively (61). Kasiske et al. reviewed 17 randomized control trials of mTOR inhibitors and found 14 trials with an increase in TC and/or TG compared to the non-mTOR comparator groups (62). Additionally, use of lipid lowering therapy was more common in the mTOR groups. However, all trials evaluated mTOR inhibitor use in kidney transplant recipients, in which the doses of mTOR inhibitors were lower than that for anti-neoplastic treatment. In a phase I clinical trial of the mTOR inhibitor deforolimus for treatment of advanced malignancies, TC exhibited a dose response relationship of 7.4 mg/dL per

10 mg increase in dose (maximum dose 75 mg) (63). In a phase III trial of temsiromilus for treatment of metastatic renal-cell carcinoma, hypercholesterolemia was seen in 24% of patients compared to 4% in the interferon alfa comparator group (64). However, the clinical significance of mTOR inhibitor induced dyslipidemia remains unclear given that mTOR inhibition may actually inhibit pathways involved in the formation of atherosclerosis (65). The long-term impact of mTOR inhibition on cardiovascular risk is unclear, as findings of reduced cardiovascular risk in patients on mTOR inhibitors are confounded by more frequent use of lipid lowering therapy in response to dyslipidemia (65, 66). Further study is needed evaluate the effect mTOR inhibitors on atherosclerotic disease.

### Alkylating agents

Alkylating agents cross-link strands of DNA and RNA to prevent cell division (67). Fulminant cardiotoxicity is a rare side effect of high-dose cyclophosphamide, the most common alkylating agent (68). However, the association between alkylating agents and dyslipidemia is unclear. Sharma et al. showed *in vitro* exposure of human hepatocytes to cyclophosphamide did not affect metabolic pathways involved in lipogenesis (38). In animal models, cyclophosphamide was shown to induce dyslipidemia in rats at toxic doses (69). In contrast, treatment with low dose cyclophosphamide was associated with reduced progression of atherosclerotic disease in mice (70). Clinical studies in humans show cyclophosphamide regimens that do not include anthracyclines do not affect lipid profiles and may even be associated with improved LDL (38). Data on dyslipidemia associated with other alkylating agents is lacking, likely due to limited usage.

### Platinums

Platinum complexes are positively charged platinum ions surrounded by negatively charged anions that cross-link DNA to inhibit transcription, resulting in failed mRNA translation and ultimately promoting cell death (71). While cholesterol metabolism appears to affect the efficacy of platinum agents (72, 73), there are minimal human studies linking platinum agents to long-term changes in cholesterol levels (74). Najam et al. investigated the effect of the platinum drugs cisplatin and oxaliplatin on rats. They noted increased levels of LDL and TG 30 days after cessation of therapy compared to controls injected with normal saline (75). Histologic review of sacrificed rats showed evidence of myofibrillar loss and vessel wall thickening in those treated with cisplatin but not oxaliplatin, but these results have not been replicated in human studies. In clinical studies in humans, an adjuvant combination regimen primarily composed of cisplatin, carboplatin, and nedaplatin was found to be associated with increased levels of TC, LDL, HDL, and TG at the end of the treatment period (76). However, in two other

studies in human subjects, no changes in plasma cholesterol were seen shortly after cisplatin therapy (77) nor after >5 year follow up (74). Overall, there is limited evidence to suggest treatment with platinum agents leads to dyslipidemia.

### Anti-metabolites

Anti-metabolites are purine and pyrimidine analogs that get incorporated into DNA to interfere with cell proliferation (78). They are a very diverse group of medications used to treat various malignancies (79). 5-Fluorouracil (5-FU) was associated with cholesterol lowering in a study in rabbits, but this link has not yet been established in humans (80). Methotrexate may cause decreases in cholesterol levels through alterations in expression of ABCA1 and 27-hydroxylase enzymes (81), an effect seen in a study of rheumatoid arthritis patients taking the drug (82). However, in the Cardiovascular Inflammation Reduction Trial, low dose methotrexate compared to placebo minimally reduced LDL, TG, and HDL but no cardiovascular benefit was observed (83). In patients with colorectal cancer treated with a predominantly anti-metabolite regimen of 5-FU and capecitabine, TC, HDL, and TG increased while LDL decreased at the end of the treatment period (84). Capecitabine alone has been rarely associated with extremely elevated TG levels (85). Other anti-metabolites have no known association with dyslipidemia in the literature and the overall impact of the drug class on ASCVD risk is still unclear.

### Hormone therapy

Estrogen and testosterone affect several regulators of cholesterol expression and transport (86, 87). For example, liver HMGCR is inhibited by estrogen, thereby resulting in decreased cholesterol synthesis (88). Additionally, testosterone deficiency has been shown to result in decreased expression of the nuclear receptors LXR and PPAR-gamma which are crucial in controlling the level of serum cholesterol (89). The inhibition of sex hormones, mainly estrogen and testosterone, are a mainstay of breast and prostate cancer therapy (90). Hormone therapy agents act agonistically or antagonistically in different tissues, thus their effects on cholesterol homeostasis are variable. Given that sex-specific hormones are closely involved in cholesterol metabolism, deficiencies in estrogen (91, 92) and testosterone (93–95) are associated with worsening lipid profiles.

In patients with breast cancer, treatment with selective estrogen receptor modulators (SERMs) such as tamoxifen have a protective effect against ASCVD and dyslipidemia (96). SERMs act as estrogen antagonists at treatment target tissues such as the breast or uterus, however, in most other tissues they mimic the effect of estrogen (97). Thus, they can provide a protective effect against chemotherapy-induced dyslipidemia (98). In a study of 55 breast cancer patients in India, participants received 20 mg daily of adjuvant tamoxifen after breast cancer surgery and had

significant reductions in TC and LDL (99). However, a separate study of 141 breast cancer patients receiving 3 years of SERM therapy showed that alterations in the lipid profile normalized within 6 months of drug discontinuation (100). Elevations in TG after SERM treatment have occurred in some studies (101, 102) but not others (99, 103).

In a meta-analysis of RCTs with variable follow up intervals, tamoxifen reduced cardiovascular events by 25–35% compared to placebo (104). In large scale study of 3,449 breast cancer patients who completed 2 or 5 years of tamoxifen therapy, women 50–59 years of age in the 5-year therapy arm experienced 35% reduction in cardiovascular events and 59% reduction in cardiovascular mortality at 10-year follow up vs. placebo. However, this effect was not found in other age groups (105). In addition, when prophylactic tamoxifen was studied in patients with and without cardiovascular disease at risk of developing breast cancer, there was no change in cardiovascular event rates associated with tamoxifen use (106). Finally, tamoxifen is associated with increased risk of venous thromboembolism and pulmonary embolism, though these end points may have been excluded in studies evaluating cardioembolic events (107).

Aromatase inhibitors (AI) reduce circulating estrogen by reducing production of the hormone (108). Compared to SERMs they are associated with increased cardiovascular risk (104). In a study of over 17,000 patients in the United Kingdom newly diagnosed with breast cancer and initiated on either an AI or tamoxifen, initial treatment with an AI was associated with a risk factor adjusted hazard ratio of 1.5 compared to those initiated on tamoxifen. In one systematic review and meta-analysis, extended treatment (>5 years after initial diagnosis) with AIs was associated with 1.18 higher odds of cardiovascular events compared to placebo (109). Additional data on cardiovascular outcomes comparing AI vs. placebo is lacking and thus comparison of cardiovascular outcomes against protective SERMs may make AIs appear more harmful. However, AIs do appear to increase dyslipidemia at least 3 months after cessation of therapy, though the full duration of effect is unknown (110). Sequential therapy with SERMs prior to AIs may mitigate this effect (111).

Androgen deprivation therapy (ADT) using hormonal treatment such as gonadotropin-releasing hormone antagonism, or less commonly, bilateral orchiectomy, is a standard component of treatment of advanced prostate cancer (112). The typical lipid profile change has been found to be an increase in TC, TG, LDL, and HDL (113). Additionally, increased arterial stiffness at 6 months has been reported following ADT and correlates with increasing cholesterol levels post-therapy (114). Increases in insulin resistance and incidence of type II diabetes have also been reported after ADT. Risk for cardiovascular disease has been shown to increase 20% after at least 1 year of ADT (115) and long-term risk may be increased with chemical ADT vs. orchiectomy (116). However, data translating this risk to higher cardiovascular mortality is mixed (113).

## Chemotherapy induced ovarian failure

Due to high cell growth rates, ovarian follicles are exquisitely sensitive to chemotherapy (117). Incidences of chemotherapy-induced ovarian failure (CIOF) as high as nearly 80% have been reported in pre-menopausal cancer patients (118). A review article by Roeters van Lennep et al. summarizes these effects. Chemotherapy can induce apoptosis of ovarian follicles, damage to follicular blood supply, and accelerated maturation of follicles that ultimately lead to premature ovarian failure. Due to the subsequent lack of estrogen production, premature ovarian failure is an established risk factor for ASCVD that may be independent of lipid homeostasis (119). Studies among women with premature ovarian failure suggest this risk may be due to increased abdominal fat, elevated inflammatory markers, or increased TG without a clear link to total cholesterol or LDL levels (120, 121). However, in a study of patients on cyclophosphamide, methotrexate and 5-FU with premature ovarian failure, risk of dyslipidemia was significantly increased (122). Chemotherapy regimens with a high risk for ovarian failure include those with cyclophosphamide, methotrexate, anthracyclines, and 5-FU for 6 or more cycles, especially in patients age > 40 years (123). SERMs may offer protection against the dyslipidemia seen in CIOF. In a study of breast cancer patients treated with a majority cyclophosphamide, methotrexate, and 5-FU regimen in addition to tamoxifen vs. control, 53% of patients had ovarian failure (124). Those treated with tamoxifen after chemotherapy had improved lipid profiles at 12 months after tamoxifen initiation, while those that received placebo after chemotherapy had no change in their dyslipidemia (124). The most effective methods for prevention and treatment of CIOF are the subject of ongoing research (125).

## Non-chemotherapy cancer treatments

Cancer treatment in the recent era is most often multimodality, and non-chemotherapy treatment agents affect dyslipidemia and ASCVD risk. Radiation therapy, often used in conjunction with chemotherapy therapy regimens, is an independent risk factor in the development of ASCVD (126). Explosive growth in the use of immunotherapy and stem cell transplant has changed the typical treatment regimens for many common cancer types. These modalities have been associated with increased ASCVD risk but association with dyslipidemia is less clear.

## Immunotherapy

Studies of the effects of immunotherapy on lipid metabolism are limited. Chimeric antigen receptor-T cells and Bispecific T cell Engager therapy are growing areas of immunotherapy,



particularly for hematologic malignancies, but their effects on lipid metabolism are unknown. Immune checkpoint inhibitors (ICIs) are an increasingly common therapy for a variety of cancers and known to have multiple cardiometabolic toxicities (127, 128). ICIs are monoclonal antibody antagonists to CTLA-4, PD-1, and PD-L1 (129). Abnormal PD-1 and PD-L1 expression, as occurs with ICI use, can lead to progression of atherosclerosis (129). Alterations in T-cell mediated intraplaque immune responses are thought to make atherosclerotic disease more vulnerable to rupture. ICI inhibition of key regulatory pathways in cardiomyocytes is thought to promote myocarditis, vasculitis, atherosclerosis, arrhythmias, and pericardial disease. A recent study of 2,842 patients with a variety of cancers undergoing ICI therapy found that those who received ICIs had 3-fold higher risk of experiencing atherosclerosis-mediated cardiac events (130). In a case-control analysis of the same population, the observed rate of cardiovascular events in the 2 years after ICI therapy was 6.55 per 100 person-years compared to 1.37 in the 2 years prior to therapy. In an imaging subgroup analysis of 40 patients, atherosclerotic plaque volume was 3 times higher with ICI therapy (130). A key question remains whether clinicians should be more aggressive with treating CVD risk factors given this population's higher propensity for adverse cardiac events. Moreover, there seems to be evidence that ICIs can enhance ASCVD risk, but their specific effects on lipid metabolism remain to be elucidated.

### Stem cell transplant

Hematopoietic stem cell transplant (SCT) patients are at elevated risk of hypertension and diabetes, and further evidence suggests that SCT is an established accelerator of atherosclerosis (131). A retrospective analysis of 194 patients who underwent allogeneic SCT and survived more than 100 days found that 42.8% of patients developed hypercholesterolemia and 50.8% of patients developed hypertriglyceridemia. The development of chronic graft-vs. host disease (GVHD) and use of steroids were associated with development of hypercholesterolemia, while use of calcineurin inhibitors was not (132). Another retrospective analysis of 761 patients who underwent allogeneic SCT and survived more than 100 days found an incidence of hypercholesterolemia and hypertriglyceridemia of 73.4% and 72.5%, respectively, at 2 years post-transplant (133). This study also found an association between acute GVHD and hypercholesterolemia and hypertriglyceridemia, and the authors proposed a role for GVHD-related liver dysfunction in the role of lipid dysregulation. Of note, statin use in this population effectively lowered TC, TG, and LDL levels (133). Thus, as SCT patients continue to experience better long-term survival, SCT must be recognized as a risk factor for accelerated atherosclerotic disease to guide appropriate prophylaxis and treatment (134).

### Radiation therapy

Localized radiation therapy (RT) has been shown to promote the development of atherosclerosis in affected tissues (25). Radiation therapy causes local endothelial damage which prompts an inflammatory cascade resulting in atherosclerosis (25). Inflammation and subsequent host immune and healing response lead to fibrosis, stenosis, and development of early atherosclerotic disease. Dyslipidemia has not been identified as a major contributor to early ASCVD in patients treated with RT and there is little mechanistic data in basic science studies to suggest it may play a significant role. In an *in vitro* study, human bronchial epithelial cells were exposed to radiation doses known to cause cell dysfunction in humans (135). Increases in cholesterol pathway enzymes and a 10–30% increase in intracellular cholesterol were detected 7 days after RT. However, whether this outcome would translate to *in vivo* studies in a meaningful way is unknown. Small studies in breast (136) and prostate (137) cancer patients showed an association of RT with reduced dyslipidemia. Large-scale clinical trials regarding dyslipidemia after RT—along with treatment strategies—are needed.

## Clonal hematopoiesis of indeterminate potential

### CHIP mutation predisposition to ASCVD independent of dyslipidemia

The identification of effects of CHIP adds a new dimension to the interweaving of the cardiovascular and cancer biology spheres. CHIP mutations create a hematologic pre-malignant state that can progress to hematologic malignancies such as leukemia, lymphoma, and myeloma at a rate of 0.5–1% per year (11). However, even in CHIP carriers who do not progress to hematologic malignancy, the all-cause mortality rate may be 40% higher and incidence of coronary heart disease twice as high as those without CHIP (11, 138). Thus, an emerging body of literature seeks to characterize the risk factors associated with CHIP development and its key behaviors. To date, CHIP mutations do not appear to increase risk of dyslipidemia. In fact, increases in ASCVD risk with CHIP mutations have been shown to be independent of traditional cardiovascular risk factors such as dyslipidemia, type 2 diabetes, hypertension, and smoking status (139). One study notes that human carriers of a CHIP mutation, particularly DNMT3A, TET2, ASXL1, and JAK2, had up to 1.9 times the risk of coronary heart disease and 4 times the risk of myocardial infarction compared to non-carriers. The same study evaluated the effects of CHIP mutations on atherosclerosis in mice and found that mice engrafted with bone marrow obtained from TET2 knockout donors had larger atherosclerotic lesions in the aorta and aortic root than mice engrafted with control bone marrow (139). In a retrospective

cohort study, patients with CHIP mutations that underwent treatment for AML had a 1.7 times higher incidence of ASCVD events than those without mutations (140). In a study of over 35,000 people without history of coronary vascular disease in the U.K. Biobank, those with DNMT3A or TET2 mutation had 27% higher risk of CVD in 6.9 years of follow up than those without the mutations (141). JAK2 mutations have been strongly linked to arterial thrombosis, conferring a 2-fold increase in events in multiple studies according to a recent review article by Leiva et al. (142). Additionally, CHIP mutations appear to exhibit a dose-response relationship with ASCVD, with the presence of more CHIP mutations increasing cardiovascular risk (139, 142). Thus, the association of CHIP with dyslipidemia and ASCVD in cancer patients, and potential mechanistic links between the two, requires ongoing study.

## Discussion

### Lipid-lowering in cancer patients

The effect of cancer and cancer therapy on atherosclerosis suggests that cancer patients are at higher risk of ASCVD-related morbidity and mortality, necessitating greater attention on prophylaxis and treatment of cardiovascular disease in this population. A recent review article by Zullig et al. summarizes the evidence regarding pharmacologic and non-pharmacologic management of cardiometabolic comorbidities in cancer survivors (143). Statins, competitive inhibitors of HMGCR, and proprotein convertase subtilisin/kexin type 9 serine protease (PCSK9) inhibitors are the mainstays of preventive therapy in cancer patients as in the general population (144, 145). A fundamental challenge facing cardiooncologists and lipidologists is the approach to treatment and prevention of dyslipidemia in this vulnerable population. Current practice advises treatment of dyslipidemia in cancer patients using the same guidelines as patients without cancer, but the response to lipid-lowering therapy in these patients is yet to be studied in large-scale trials.

Statins may benefit oncology patients through their cholesterol-lowering effects as well as an anti-cancer effect. For example, the use of statins prior to cancer diagnosis has been linked to reduced risk of developing certain cancers such as pancreatic cancer and non-Hodgkin lymphoma (146–148). Additionally, statins may enhance the anti-tumor properties of some chemotherapeutic agents. For example, in two studies of patients with metastatic renal cell carcinoma receiving anti-VEGF or mTOR-inhibitors and lung cancer receiving EGFR-TKI therapy, patients treated with statins concurrently had improved overall survival compared to statin non-users (149, 150). Similarly, a randomized placebo-controlled trial of 89 participants found that prophylactic use of rosuvastatin at the time of anthracycline therapy prevented reductions in ejection fraction, left atrial diameter, and E/e' ratio (151). Finally, three

large meta-analyses of patients using statins did not show an association between statin use and increased risk of developing cancer (152, 153). Though the mechanisms by which statins promote an anti-cancer effect are not well-known, this area warrants further research given that traditional thresholds of ASCVD risk may exclude oncology patients that would benefit from preventative therapy.

PCSK-9 inhibitors are an established alternative or adjunct therapy to statins for cholesterol reduction. They have profound LDL-lowering effects that have been shown to reduce cardiovascular events (154, 155). The use of PCSK-9 inhibitors in patients with cancer is less well-studied, though early basic science evidence suggests that their cholesterol-related and non-cholesterol-related properties may have consequences for cancer as well (156, 157). For example, one study found that PCSK-9 inhibition in mice potentiated the anti-tumor effects of ICI therapy, although the direct effects of lipid metabolism have yet to be studied (158).

Non-pharmacologic approaches to lipid-lowering in cancer patients are also important. Exercise oncology is a growing area of interest to promote health and longevity among cancer survivors (159). Tailored pre- and post-treatment exercise programs are being studied for their potential to reduce the detrimental effects of cancer therapy on the cardiovascular system as well as overall morbidity and mortality (159, 160). Among patients without cancer, exercise has been shown to increase blood lipid consumption and decrease lipid levels. Potential mechanisms include increased LPL activity, increased expression of ABCA1, increased plasma HDL formation, and increased LXR formation (161–165). While early studies suggest that exercise has cardiovascular benefit for cancer patients, a nuanced study of its effect on lipid metabolism in this population is yet to be conducted.

Thus, there is promising data to suggest that cancer patients with dyslipidemia may benefit from traditional treatment with statins or PCSK-9 inhibitors. The next frontier for clinicians and researchers is identification of more nuanced treatment guidelines for cardiooncology patients who may be at increased risk of atherosclerotic events. Further research into the changes in lipid metabolism attributable to various cancers and cytotoxic therapies is needed to inform such guidelines.

### Clinical guidance for managing dyslipidemia and ASCVD risk in cancer patients

Screening for ASCVD in the general population relies on traditional risk stratification tools, however, such tools do not often account for a history of cancer or cancer treatment. In adults who received cancer treatment as a child, the Childhood Cancer Survivor Cardiovascular Risk Calculator can estimate risk based on age, gender, and prior treatment (166). However,

no such calculator exists for patients receiving cancer treatment as adults. Additionally, depending on baseline risk factors and cancer treatment course, risk of ASCVD in cancer survivors may be substantially underestimated. Formal clinical practice guidelines for prevention of dyslipidemia and ASCVD cancer patients are sparse due to limited data, but several societies advocate for more aggressive assessment of ASCVD risk in cancer patients (167–169).

While studies are underway to better characterize the increased ASCVD risk that cancer patients carry, clinicians treating the cancer patient should be aware of classes of cytotoxic therapy that are known to increase risk in long-term dyslipidemia. These include Anthracyclines, VEGF inhibitors, and ADT. Clinicians should consider more aggressive screening of cardiovascular risk factors in patients who have received or are receiving treatment with these agents. Additionally, clinicians should utilize the diagnostic tests used in cancer management to help risk stratify ASCVD risk. For example, coronary artery calcifications on chest imaging are associated with clinically significant ASCVD (170, 171). Moreover, baseline testing prior to anthracycline initiation, which includes ECG, echocardiogram, and occasionally cardiac magnetic resonance imaging, should be reviewed thoroughly for evidence of subclinical CAD (172–174).

Statin therapy should continue to be the mainstay of lipid lowering therapy in cancer patients and clinicians ought to consider lower thresholds of traditional ASCVD risk calculators to initiate or intensify therapy in cancer patients treated with chemotherapy associated with dyslipidemia or ASCVD, chest radiation, immunotherapy, or stem-cell therapy (Table 1). At this juncture, there is insufficient evidence to recommend PCSK-9 inhibitors as adjunct therapy for cancer survivors unless they have an indication specified in society guidelines, but further research is needed to explore specific indications for this medication in cancer survivors. A healthy lifestyle should be emphasized to cancer survivors to reduce risk of cancer recurrence and ASCVD (175, 176).

## Implication of cholesterol-related metabolites in cancer

Although the present review focuses on cytotoxic effects related to cholesterol, other related lipids have been implicated in cancer risk. Oxysterols are derivatives of cholesterol that act as direct activators of the nuclear receptor LXR (177). LXR activation can have direct anti-proliferative effects and inhibit cell cycle activation (178, 179). Others have shown that LXR agonism improves immune responses to immunotherapy (180). Thus, there is substantial interest in LXRs as potential targets for cancer (181). Complete loss of SREBP1 and SREBP2 through SREBP cleavage-activating protein deficiency inhibits cancer cell growth and viability through modulation of fatty acid desaturation activity, highlighting a key role for fatty

acid regulation in cancer (182). Further study as to how cholesterol-related metabolites influence cancer development and therapeutic responses may have important implications for cardiovascular risk assessment in cancer patients and invite new approaches to cytotoxic drug development.

## Conclusion and future directions

Dyslipidemia is a crucial factor in the development of ASCVD. The increased incidence of ASCVD in cancer patients suggests the need for greater attention on prophylaxis and treatment of cardiovascular disease in this population, including study of potential precursors of both disease states, such as CHIP. Future research may include specific study of various cytotoxic therapies on incident ASCVD, as research to date suggests that these effects may be variable. Prospective studies are needed to assess dyslipidemia and the risk of ASCVD after each class and combination of chemotherapy treatment to better predict the likelihood of an ASCVD event in cancer survivors (183). Moreover, there are multiple lipid-independent effects of cancer therapy on ASCVD, such as vascular toxicity and CIOF, that must be studied in conjunction with the lipid-dependent effects outlined in this review for holistic understanding of the impact of cytotoxic therapy on ASCVD risk. Clinicians should be keenly aware of the unique impacts cytotoxic treatment regimens may have on short-term and long-term cholesterol metabolism. As cancer survivors live longer and the duration and variety of treatment regimens increases, the heterogenous relationships between dyslipidemia and accelerated ASCVD warrant close study. Thus, greater attention toward ASCVD risk in cancer patients is required, and early and aggressive efforts must be made to modify risk factors such as atherosclerosis. Importantly, research on treatment strategies with guideline-recommended lipid lowering therapies is critical to determine the most effective methods of reducing ASCVD risk. With better understanding of cancer therapy-related ASCVD risk, evidence-informed guidelines for screening and prevention can be implemented for this unique, varied, and vulnerable population.

## Author contributions

RB, ND, EY, and TS: envisioning, design, writing, and revision of the manuscript. All authors contributed to the article and approved the submitted version.

## Funding

TS receives research funding from the National Institutes of Health (Grant Nos. HL149766, HL139549, DK118086, and DK127232), American Heart Association, and Burroughs Wellcome Fund outside of the present study. EY receives research funding from CSL Behring, Boehringer Ingelheim, and Eli Lilly outside of the present study.

## Conflict of interest

The authors declare that the research was conducted in the absence of any commercial or financial relationships that could be construed as a potential conflict of interest.

## Publisher's note

All claims expressed in this article are solely those of the authors and do not necessarily represent those of their affiliated

organizations, or those of the publisher, the editors and the reviewers. Any product that may be evaluated in this article, or claim that may be made by its manufacturer, is not guaranteed or endorsed by the publisher.

## Supplementary material

The Supplementary Material for this article can be found online at: <https://www.frontiersin.org/articles/10.3389/fcvm.2022.925816/full#supplementary-material>

## References

- Ference BA, Ginsberg HN, Graham I, Ray KK, Packard CJ, Bruckert E, et al. Low-density lipoproteins cause atherosclerotic cardiovascular disease. 1. Evidence from genetic, epidemiologic, and clinical studies. A consensus statement from the European atherosclerosis society consensus panel. *Euro Heart J.* (2017) 38:2459–72. doi: 10.1093/eurheartj/ehx144
- Grundy SM, Stone NJ, Bailey AL, Beam C, Birtcher KK, Blumenthal RS, et al. 2018 AHA/ACC/AACVPR/AAPA/ABC/ACPM/ADA/AGS/APhA/ASPC/NLA/PCNA guideline on the management of blood cholesterol: executive summary: a report of the American college of cardiology/American heart association task force on clinical practice guidelines. *J Am Coll Cardiol.* (2019) 73:3168–209. doi: 10.1016/j.jacc.2018.11.004
- Miller KD, Nogueira L, Mariotto AB, Rowland JH, Yabroff KR, Alfano CM, et al. Cancer treatment and survivorship statistics, 2019. *CA Cancer J Clin.* (2019) 69:363–85. doi: 10.3322/caac.21565
- Giza DE, Iliescu G, Hassan S, Marmagkiolis K, Iliescu C. Cancer as a risk factor for cardiovascular disease. *Curr Oncol Rep.* (2017) 19:39. doi: 10.1007/s11912-017-0601-x
- Essa H, Pettitt AR, Lip GY. Hypertension and cardiovascular risk factors when treating cancer patients: underrecognised and undertreated. *J Hum Hypertens.* (2021) 35:301–3. doi: 10.1038/s41371-020-00400-8
- Bielecka-Dabrowa A, Hannam S, Rysz J, Banach M. Malignancy-associated dyslipidemia. *Open Cardiovasc Med J.* (2011) 5:35. doi: 10.2174/1874192401105010035
- Patel PS, Shah M, Jha F, Raval G, Rawal R, Patel M, et al. Alterations in plasma lipid profile patterns in head and neck cancer and oral precancerous conditions. *Indian J Cancer.* (2004) 41:25.
- Arem H, Lofffield E. Cancer epidemiology: a survey of modifiable risk factors for prevention and survivorship. *Am J Lifestyle Med.* (2018) 12:200–10. doi: 10.1177/1559827617700600
- Zhang X, Pawlikowski M, Olivo-Marston S, Williams KP, Bower JK, Felix AS. Ten-year cardiovascular risk among cancer survivors: the national health and nutrition examination survey. *PLoS ONE.* (2021) 16:e0247919. doi: 10.1371/journal.pone.0247919
- Handy CE, Desai CS, Dardari ZA, Al-Mallah MH, Miedema MD, Ouyang P, et al. The association of coronary artery calcium with noncardiovascular disease: the multi-ethnic study of atherosclerosis. *JACC Cardiovasc Imaging.* (2016) 9:568–76. doi: 10.1016/j.jcmg.2015.09.020
- Mooney L, Goodyear CS, Chandra T, Kirschner K, Copland M, Petrie MC, et al. Clonal haematopoiesis of indeterminate potential: intersections between inflammation, vascular disease and heart failure. *Clin Sci.* (2021) 135:991–1007. doi: 10.1042/CS20200306
- Mas-Peiro S, Hoffmann J, Fichtlscherer S, Dorsheimer L, Rieger MA, Dimmeler S, et al. Clonal haematopoiesis in patients with degenerative aortic valve stenosis undergoing transcatheter aortic valve implantation. *Eur Heart J.* (2020) 41:933–9. doi: 10.1093/eurheartj/ehz591
- Abplanalp WT, Mas-Peiro S, Cremer S, John D, Dimmeler S, Zeiher AM. Association of clonal hematopoiesis of indeterminate potential with inflammatory gene expression in patients with severe degenerative aortic valve stenosis or chronic postischemic heart failure. *JAMA Cardiol.* (2020) 5:1170–5. doi: 10.1001/jamacardio.2020.2468
- Shin S, Wook Shin D, Young Cho I, Jeong S-M, Jung H. Status of dyslipidemia management and statin undertreatment in Korean cancer survivors: a Korean national health and nutrition examination survey study. *Eur J Prev Cardiol.* (2021) 28:864–72. doi: 10.1177/2047487320905722
- Luo J, Yang H, Song B-L. Mechanisms and regulation of cholesterol homeostasis. *Nat Rev Mol Cell Biol.* (2020) 21:225–45. doi: 10.1038/s41580-019-0190-7
- Lusis AJ. Atherosclerosis. *Nature.* (2000) 407:233–41. doi: 10.1038/35025203
- Horton JD, Goldstein JL, Brown MS. SREBPs: activators of the complete program of cholesterol and fatty acid synthesis in the liver. *J Clin Invest.* (2002) 109:1125–31. doi: 10.1172/JCI0215593
- Lee SD, Tontonoz P. Liver X receptors at the intersection of lipid metabolism and atherogenesis. *Atherosclerosis.* (2015) 242:29–36. doi: 10.1016/j.atherosclerosis.2015.06.042
- Wang S, Smith JD. ABCA1 and nascent HDL biogenesis. *Biofactors.* (2014) 40:547–54. doi: 10.1002/biof.1187
- Moore KJ, Tabas I. Macrophages in the pathogenesis of atherosclerosis. *Cell.* (2011) 145:341–55. doi: 10.1016/j.cell.2011.04.005
- Koene RJ, Prizment AE, Blaes A, Konety SH. Shared risk factors in cardiovascular disease and cancer. *Circulation.* (2016) 133:1104–14. doi: 10.1161/CIRCULATIONAHA.115.020406
- Bradshaw PT, Stevens J, Khankari N, Teitelbaum SL, Neugut AI, Gammon MD. Cardiovascular disease mortality among breast cancer survivors. *Epidemiology.* (2016) 27:6. doi: 10.1097/EDE.0000000000000394
- Strongman H, Gadd S, Matthews A, Mansfield KE, Stanway S, Lyon AR, et al. Medium and long-term risks of specific cardiovascular diseases in survivors of 20 adult cancers: a population-based cohort study using multiple linked UK electronic health records databases. *Lancet.* (2019) 394:1041–54. doi: 10.1016/S0140-6736(19)31674-5
- Kondapalli L, Bottinor W, Lenneman C. By releasing the brakes with immunotherapy, are we accelerating atherosclerosis? *Am Heart Assoc.* (2020) 142:2312–5. doi: 10.1161/CIRCULATIONAHA.120.051753
- Min SS, Wierzbicki AS. Radiotherapy, chemotherapy and atherosclerosis. *Curr Opin Cardiol.* (2017) 32:441–7. doi: 10.1097/HCO.0000000000000404
- Florida R, Daya NR, Ndumele CE, Koton S, Russell SD, Prizment A, et al. Cardiovascular disease risk among cancer survivors: the atherosclerosis risk in communities (ARIC) study. *J Am Coll Cardiol.* (2022) 80:22–32. doi: 10.1016/j.jacc.2022.04.042
- Brenner H. Long-term survival rates of cancer patients achieved by the end of the 20th century: a period analysis. *Lancet.* (2002) 360:1131–5. doi: 10.1016/S0140-6736(02)11199-8
- Guo F, Kuo Yf, Shih YCT, Giordano SH, Berenson AB. Trends in breast cancer mortality by stage at diagnosis among young women in the United States. *Cancer.* (2018) 124:3500–9. doi: 10.1002/cncr.31638
- Gennari A, Stockler M, Puntoni M, Sormani M, Nanni O, Amadori D, et al. Duration of chemotherapy for metastatic breast cancer: a systematic review and meta-analysis of randomized clinical trials. In: *Database of Abstracts of Reviews of Effects (DARE): Quality-assessed Reviews.* American Society of Clinical Oncology (2011). doi: 10.1200/JCO.2010.31.5374
- Ludwig H, Zojeer N. Fixed duration vs continuous therapy in multiple myeloma. In: *Hematology 2014 the American Society of Hematology Education Program Book.* American Society of Hematology (2017). p. 212–22. doi: 10.1182/asheducation-2017.1.212

31. Rowinski E, Fournel P, Bernichon E, Bouleftour W, Magné N, Mery B. Maintenance therapy in metastatic solid tumors. *Am J Clin Oncol*. (2019) 42:615–23. doi: 10.1097/COC.0000000000000574
32. Hortobágyi GN. Anthracyclines in the treatment of cancer. An overview. *Drugs*. (1997) 54 Suppl 4:1–7.
33. Nebigil CG, Désaubry L. Updates in anthracycline-mediated cardiotoxicity. *Front Pharmacol*. (2018) 9:1262. doi: 10.3389/fphar.2018.01262
34. Lu Q, Wu X, Zhu Y, Yang J, Wang X, Ye C, et al. Effects of chemotherapy on serum lipids in chinese postoperative breast cancer patients. *Cancer Manag Res*. (2020) 12:8397–408. doi: 10.2147/CMAR.S253397
35. Tian W, Yao Y, Fan G, Zhou Y, Wu M, Xu D, et al. Changes in lipid profiles during and after (neo)adjuvant chemotherapy in women with early-stage breast cancer: a retrospective study. *PLoS ONE*. (2019) 14:e0221866. doi: 10.1371/journal.pone.0221866
36. He T, Wang C, Tan Q, Wang Z, Li J, Chen T, et al. Adjuvant chemotherapy-associated lipid changes in breast cancer patients: a real-world retrospective analysis. *Medicine*. (2020) 99:e21498. doi: 10.1097/MD.00000000000021498
37. Contois JH, McConnell JP, Sethi AA, Csako G, Devaraj S, Hoefner DM, et al. Apolipoprotein B and cardiovascular disease risk: position statement from the AACC lipoproteins and vascular diseases division working group on best practices. *Clin Chem*. (2009) 55:407–19. doi: 10.1373/clinchem.2008.118356
38. Sharma M, Tuaine J, McLaren B, Waters DL, Black K, Jones LM, et al. Chemotherapy agents alter plasma lipids in breast cancer patients and show differential effects on lipid metabolism genes in liver cells. *PLoS ONE*. (2016) 11:e0148049. doi: 10.1371/journal.pone.0148049
39. Monzel JV, Budde T, Meyer Zu Schwabedissen HE, Schwebe M, Bien-Möller S, Lütjohann D, et al. Doxorubicin enhances oxysterol levels resulting in a LXR-mediated upregulation of cardiac cholesterol transporters. *Biochem Pharmacol*. (2017) 144:108–19. doi: 10.1016/j.bcp.2017.08.008
40. Arpino G, De Angelis C, Buono G, Colao A, Giuliano M, Malgieri S, et al. Metabolic and anthropometric changes in early breast cancer patients receiving adjuvant therapy. *Breast Cancer Res Treat*. (2015) 154:127–32. doi: 10.1007/s10549-015-3586-x
41. Choy H. Taxanes in combined modality therapy for solid tumors. *Crit Rev Oncol Hematol*. (2001) 37:237–47. doi: 10.1016/S1040-8428(00)00112-8
42. Panis C, Binato R, Correa S, Victorino VJ, Dias-Alves V, Herrera A, et al. Short infusion of paclitaxel imbalances plasmatic lipid metabolism and correlates with cardiac markers of acute damage in patients with breast cancer. *Cancer Chemother Pharmacol*. (2017) 80:469–78. doi: 10.1007/s00280-017-3384-8
43. Ashry NA, Abd?lazziz RR, Sudd?k GM. The potential effect of imatinib against hypercholesterolemia induced atherosclerosis, endothelial dysfunction and hepatic injury in rabbits. *Life Sci*. (2020) 243:117275. doi: 10.1016/j.lfs.2020.117275
44. Gottardi M, Manzato E, Gherlinzoni F. Imatinib and hyperlipidemia. *N Engl J Med*. (2005) 353:2722–3. doi: 10.1056/NEJMc052500
45. Moslehi JJ, Deiner M. Tyrosine kinase inhibitor-associated cardiovascular toxicity in chronic myeloid leukemia. *J Clin Oncol*. (2015) 33:4210–8. doi: 10.1200/JCO.2015.62.4718
46. Pasvolosky O, Leader A, Iakobishvili Z, Wasserstrum Y, Kornowski R, Raanani P. Tyrosine kinase inhibitor associated vascular toxicity in chronic myeloid leukemia. *Cardio Oncol*. (2015) 1:5. doi: 10.1186/s40959-015-0008-5
47. Douxfils J, Haguët H, Mullier F, Chatelain C, Graux C, Dogné JM. Association between BCR-ABL tyrosine kinase inhibitors for chronic myeloid leukemia and cardiovascular events, major molecular response, and overall survival: a systematic review and meta-analysis. *JAMA Oncol*. (2016) 2:625–32. doi: 10.1001/jamaoncol.2015.5932
48. Ellis M, Krashin E, Hamburger-Avner O, Gan S, Elis A, Ashur-Fabian O. The anti-leukemic and lipid lowering effects of imatinib are not hindered by statins in CML: a retrospective clinical study and *in vitro* assessment of lipid-genes transcription. *Leuk Lymphoma*. (2017) 58:1172–7. doi: 10.1080/10428194.2016.1228928
49. Prasad V, Mailankody S. The accelerated approval of oncologic drugs: lessons from ponatinib. *JAMA*. (2014) 311:353–4. doi: 10.1001/jama.2013.284531
50. Pouwer MG, Pieterman EJ, Verschuren L, Caspers MP, Klufft C, Garcia RA, et al. The BCR-ABL1 inhibitors imatinib and ponatinib decrease plasma cholesterol and atherosclerosis, and nilotinib and ponatinib activate coagulation in a translational mouse model. *Front Cardiovasc Med*. (2018) 5:55. doi: 10.3389/fcvm.2018.00055
51. Blay JY, von Mehren M. Nilotinib: a novel, selective tyrosine kinase inhibitor. *Semin Oncol*. (2011) 38 (Suppl. 1):S3–9. doi: 10.1053/j.seminoncol.2011.01.016
52. Iurlo A, Orsi E, Cattaneo D, Resi V, Bucelli C, Orofino N, et al. Effects of first- and second-generation tyrosine kinase inhibitor therapy on glucose and lipid metabolism in chronic myeloid leukemia patients: a real clinical problem? *Oncotarget*. (2015) 6:33944–51. doi: 10.18632/oncotarget.5580
53. Rea D, Mirault T, Cluzeau T, Gautier JF, Guillhot F, Dombret H, et al. Early onset hypercholesterolemia induced by the 2nd-generation tyrosine kinase inhibitor nilotinib in patients with chronic phase-chronic myeloid leukemia. *Haematologica*. (2014) 99:1197–203. doi: 10.3324/haematol.2014.104075
54. Kim TD, Rea D, Schwarz M, Grille P, Nicolini FE, Rosti G, et al. Peripheral artery occlusive disease in chronic phase chronic myeloid leukemia patients treated with nilotinib or imatinib. *Leukemia*. (2013) 27:1316–21. doi: 10.1038/leu.2013.70
55. Hornák T, Semerád L, Žáčková D, Weinbergerová B, Šustková Z, Procházková J, et al. Analysis of serum lipids, cardiovascular risk, and indication for statin use during nilotinib and imatinib therapy in *de novo* CML patients - results from real-life prospective study. *Leuk Lymphoma*. (2020) 61:494–6. doi: 10.1080/10428194.2019.1672054
56. Kang YE, Kim JM, Joung KH, Kim HJ, Ku BJ. Treatment with gefitinib, an epidermal growth factor receptor inhibitor, decreases serum cholesterol in patients with lung cancer. *Korean J Obesity*. (2016) 25:233–9. doi: 10.7570/kjo.2016.25.4.233
57. European Medicines Agency. *Assessment Report: Lorviqua*. Amsterdam: European Medicines Agency; CHMP (2019).
58. Cannarozzo C, Fred SM, Giryh M, Biojone C, Enkavi G, Róg T, et al. Cholesterol-recognition motifs in the transmembrane domain of the tyrosine kinase receptor family: the case of TRKB. *Eur J Neurosci*. (2021) 53:3311–22. doi: 10.1111/ejn.15218
59. Zhang X, Zhang H, Dai J, Liu Z, Zhu X, Ni Y, et al. The influence of dynamic changes in lipid metabolism on survival outcomes in patients with metastatic renal cell carcinoma treated with tyrosine kinase inhibitors. *Jpn J Clin Oncol*. (2020) 50:1454–63. doi: 10.1093/jcco/hyaa120
60. Zou Z, Tao T, Li H, Zhu X. mTOR signaling pathway and mTOR inhibitors in cancer: progress and challenges. *Cell Biosci*. (2020) 10:31. doi: 10.1186/s13578-020-00396-1
61. Vergès B, Walter T, Cariou B. Endocrine side effects of anti-cancer drugs: effects of anti-cancer targeted therapies on lipid and glucose metabolism. *Euro J Endocrinol*. (2014) 170:R43–55. doi: 10.1530/EJE-13-0586
62. Kasiske BL, de Mattos A, Flechner SM, Gallon L, Meier-Kriesche HU, Weir MR, et al. Mammalian target of rapamycin inhibitor dyslipidemia in kidney transplant recipients. *Am J Transplant*. (2008) 8:1384–92. doi: 10.1111/j.1600-6143.2008.02272.x
63. Hartford CM, Desai AA, Janisch L, Karrison T, Rivera VM, Berk L, et al. A phase I trial to determine the safety, tolerability, and maximum tolerated dose of deforolimus in patients with advanced malignancies. *Clin Cancer Res*. (2009) 15:1428–34. doi: 10.1158/1078-0432.CCR-08-2076
64. Hudes G, Carducci M, Tomczak P, Dutcher J, Figlin R, Kapoor A, et al. Temsirolimus, interferon alfa, or both for advanced renal-cell carcinoma. *N Engl J Med*. (2007) 356:2271–81. doi: 10.1056/NEJMoa066838
65. Kurdi A, Martinet W, De Meyer GRY. mTOR inhibition and cardiovascular diseases: dyslipidemia and atherosclerosis. *Transplantation*. (2018) 102 (2S Suppl. 1):S44–6. doi: 10.1097/TP.0000000000001693
66. McKenna GJ, Trotter JF, Klintmalm E, Ruiz R, Onaca N, Testa G, et al. Sirolimus and cardiovascular disease risk in liver transplantation. *Transplantation*. (2013) 95:215–21. doi: 10.1097/TP.0b013e318279090c
67. Pollard JD, Hartung H-P, Hughes RAC. Chapter 28—principles of immunotherapy. In: Dyck PJ, Thomas PK, editors. *Peripheral Neuropathy*. Fourth edition. Philadelphia, PA: W.B. Saunders (2005). p. 635–48. doi: 10.1016/B978-0-7216-9491-7.50031-4
68. Gottdiener JS, Appelbaum FR, Ferrans VJ, Deisseroth A, Ziegler J. Cardiotoxicity associated with high-dose cyclophosphamide therapy. *Arch Intern Med*. (1981) 141:758–63. doi: 10.1001/archinte.141.6.758
69. Mythili Y, Sudharsan PT, Sudhahar V, Varalakshmi P. Protective effect of DL-alpha-lipoic acid on cyclophosphamide induced hyperlipidemic cardiomyopathy. *Eur J Pharmacol*. (2006) 543:92–6. doi: 10.1016/j.ejphar.2006.06.007
70. Sato-Okabayashi Y, Isoda K, Heissig B, Kadoguchi T, Akita K, Kitamura K, et al. Low-dose oral cyclophosphamide therapy reduces atherosclerosis progression by decreasing inflammatory cells in a murine model of atherosclerosis. *Int J Cardiol Heart Vasc*. (2020) 28:100529. doi: 10.1016/j.ijcha.2020.100529
71. Johnstone TC, Park GY, Lippard SJ. Understanding and improving platinum anticancer drugs—platinum. *Anticancer Res*. (2014) 34:471–6.
72. Criscuolo D, Avolio R, Calice G, Laezza C, Paladino S, Navarra G, et al. Cholesterol homeostasis modulates platinum sensitivity in human ovarian cancer. *Cells*. (2020) 9:828. doi: 10.3390/cells9040828

73. Wu Y, Si R, Tang H, He Z, Zhu H, Wang L, et al. Cholesterol reduces the sensitivity to platinum-based chemotherapy via upregulating ABCG2 in lung adenocarcinoma. *Biochem Biophys Res Commun.* (2015) 457:614–20. doi: 10.1016/j.bbrc.2015.01.035
74. Koc G, Divrik TR, Unlu N, Bulut V, Zorlu F. Does cisplatin-based chemotherapy effect on blood lipid levels of patients with germ cell testicular tumor in long-term follow-up? *Int Urol Nephrol.* (2011) 43:1095–100. doi: 10.1007/s11255-011-9939-4
75. Najam R, Bano N, Mirza T, Hassan S. Adverse effects on cardiovascular status and lipid levels of albino Wistar rats treated with cisplatin and oxaliplatin in combination with 5 fluorouracil. *Pak J Pharm Sci.* (2014) 27:1409–18. doi: 10.5114/aoms.2019.86064
76. Luo F, Zeng KM, Cao JX, Zhou T, Lin SX, Ma WJ, et al. Predictive value of a reduction in the level of high-density lipoprotein-cholesterol in patients with non-small-cell lung cancer undergoing radical resection and adjuvant chemotherapy: a retrospective observational study. *Lipids Health Dis.* (2021) 20:1–14. doi: 10.1186/s12944-021-01538-1
77. Ellis PA, Fitzharris BM, George PM, Robinson BA, Atkinson CH, Colls BM. Fasting plasma lipid measurements following cisplatin chemotherapy in patients with germ cell tumors. *J Clin Oncol.* (1992) 10:1609–14. doi: 10.1200/JCO.1992.10.1609
78. Scholar E. Antimetabolites. In: Enna SJ, Bylund DB, editors. *xPharm: The Comprehensive Pharmacology Reference*. New York, NY: Elsevier (2007). p. 1–4.
79. Kaye SB. New antimetabolites in cancer chemotherapy and their clinical impact. *Br J Cancer.* (1998) 78 (Suppl. 3):1–7. doi: 10.1038/bjc.1998.747
80. Stathopoulos GP, Stergiou GS, Perrea-Kostarelis DN, Dontas IA, Karamanos BG, Karayiannacos PE. Influence of 5-fluorouracil on serum lipids. *Acta Oncol.* (1995) 34:253–6. doi: 10.3109/02841869509093964
81. Coomes E, Chan ES, Reiss AB. Methotrexate in atherogenesis and cholesterol metabolism. *Cholesterol.* (2011) 2011:503028. doi: 10.1155/2011/503028
82. Navarro-Millán I, Charles-Schoeman C, Yang S, Bathon JM, Bridges SL, Jr., et al. Changes in lipoproteins associated with methotrexate or combination therapy in early rheumatoid arthritis: results from the treatment of early rheumatoid arthritis trial. *Arthritis Rheum.* (2013) 65:1430–8. doi: 10.1002/art.37916
83. Ridker PM, Everett BM, Pradhan A, MacFadyen JG, Solomon DH, Zaharris E, et al. Low-Dose methotrexate for the prevention of atherosclerotic events. *N Engl J Med.* (2019) 380:752–62. doi: 10.1056/NEJMoa1809798
84. Wang Y, Wang ZQ, Wang FH, Lei XF, Yan SM, Wang DS, et al. Predictive value of chemotherapy-related high-density lipoprotein cholesterol (HDL) elevation in patients with colorectal cancer receiving adjuvant chemotherapy: an exploratory analysis of 851 cases. *Oncotarget.* (2016) 7:57290–300. doi: 10.18632/oncotarget.10145
85. Bar-Sela G, Haim N. Uncontrolled hypertriglyceridemia induced by capecitabine: case report and review of the literature. *Cancer Chemother Pharmacol.* (2009) 63:779–82. doi: 10.1007/s00280-008-0799-2
86. Kelly DM, Jones TH. Testosterone: a metabolic hormone in health and disease. *J Endocrinol.* (2013) 217:R25–45. doi: 10.1530/JOE-12-0455
87. Palmisano BT, Zhu L, Stafford JM. Role of estrogens in the regulation of liver lipid metabolism. *Adv Exp Med Biol.* (2017) 1043:227–56. doi: 10.1007/978-3-319-70178-3\_12
88. Pedram A, Razandi M, O'Mahony F, Harvey H, Harvey BJ, Levin ER. Estrogen reduces lipid content in the liver exclusively from membrane receptor signaling. *Sci Signal.* (2013) 6:ra36. doi: 10.1126/scisignal.2004013
89. Kelly DM, Akhtar S, Sellers DJ, Muraleedharan V, Channer KS, Jones TH. Testosterone differentially regulates targets of lipid and glucose metabolism in liver, muscle and adipose tissues of the testicular feminised mouse. *Endocrine.* (2016) 54:504–15. doi: 10.1007/s12020-016-1019-1
90. Rau KM, Kang HY, Cha TL, Miller SA, Hung MC. The mechanisms and managements of hormone-therapy resistance in breast and prostate cancers. *Endocr Relat Cancer.* (2005) 12:511–32. doi: 10.1677/erc.1.01026
91. Fähræus L. The effects of estradiol on blood lipids and lipoproteins in postmenopausal women. *Obstet Gynecol.* (1988) 72 (5 Suppl):18s–22s.
92. Barton M. Cholesterol and atherosclerosis: modulation by oestrogen. *Curr Opin Lipidol.* (2013) 24:214–20. doi: 10.1097/MOL.0b013e3283613a94
93. Zgliczynski S, Ossowski M, Slowinska-Srzednicka J, Brzezinska A, Zgliczynski W, Soszynski P, et al. Effect of testosterone replacement therapy on lipids and lipoproteins in hypogonadal and elderly men. *Atherosclerosis.* (1996) 121:35–43. doi: 10.1016/0021-9150(95)05673-4
94. Cai Z, Xi H, Pan Y, Jiang X, Chen L, Cai Y, et al. Effect of testosterone deficiency on cholesterol metabolism in pigs fed a high-fat and high-cholesterol diet. *Lipids Health Dis.* (2015) 14:18. doi: 10.1186/s12944-015-0014-5
95. Traish AM, Saad F, Feeley RJ, Guay A. The dark side of testosterone deficiency: III. Cardiovascular disease. *J Androl.* (2009) 30:477–94. doi: 10.2164/jandrol.108.007245
96. Jordan VC. The role of tamoxifen in the treatment and prevention of breast cancer. *Curr Probl Cancer.* (1992) 16:129–76. doi: 10.1016/0147-0272(92)90002-6
97. Gallo MA, Kaufman D. Antagonistic and agonistic effects of tamoxifen: significance in human cancer. *Semin Oncol.* (1997) 24 (1 Suppl. 1):S1–71–80.
98. Anan K, Mitsuyama S, Yanagita Y, Kimura M, Doihara H, Komaki K, et al. Effects of toremifene and anastrozole on serum lipids and bone metabolism in postmenopausal females with estrogen receptor-positive breast cancer: the results of a 2-year multicenter open randomized study. *Breast Cancer Res Treat.* (2011) 128:775–81. doi: 10.1007/s10549-011-1608-x
99. Gupta S, Tandon VR, Kapoor B, Gupta A, Gupta GD, Khajuria V. Effects of tamoxifen therapy on plasma lipid profile in patients of breast cancer. *J Assoc Phys India.* (2006) 54:183–6.
100. Joensuu H, Holli K, Oksanen H, Valavaara R. Serum lipid levels during and after adjuvant toremifene or tamoxifen therapy for breast cancer. *Breast Cancer Res Treat.* (2000) 63:225–34. doi: 10.1023/A:1006465732143
101. Liu CL, Yang TL. Sequential changes in serum triglyceride levels during adjuvant tamoxifen therapy in breast cancer patients and the effect of dose reduction. *Breast Cancer Res Treat.* (2003) 79:11–6. doi: 10.1023/A:1023348021773
102. Hozumi Y, Kawano M, Saito T, Miyata M. Effect of tamoxifen on serum lipid metabolism. *J Clin Endocrinol Metab.* (1998) 83:1633–5. doi: 10.1210/jcem.83.5.4753
103. Love RR, Wiebe DA, Feyz J, Newcomb PA, Chappell RJ. Effects of tamoxifen on cardiovascular risk factors in postmenopausal women after 5 years of treatment. *J Natl Cancer Inst.* (1994) 86:1534–9. doi: 10.1093/jnci/86.20.1534
104. Khosrow-Khavar F, Filion KB, Al-Qurashi S, Torabi N, Bouganim N, Suissa S, et al. Cardiotoxicity of aromatase inhibitors and tamoxifen in postmenopausal women with breast cancer: a systematic review and meta-analysis of randomized controlled trials. *Ann Oncol.* (2017) 28:487–96. doi: 10.1093/annonc/mdw673
105. Hackshaw A, Roughton M, Forsyth S, Monson K, Reczko K, Sainsbury R, et al. Long-term benefits of 5 years of tamoxifen: 10-year follow-up of a large randomized trial in women at least 50 years of age with early breast cancer. *J Clin Oncol.* (2011) 29:1657–63. doi: 10.1200/JCO.2010.32.2933
106. Reis SE, Costantino JP, Wickerham DL, Tan-Chiu E, Wang J, Kavanah M. Cardiovascular effects of tamoxifen in women with and without heart disease: breast cancer prevention trial. National surgical adjuvant breast and bowel project breast cancer prevention trial investigators. *J Natl Cancer Inst.* (2001) 93:16–21. doi: 10.1093/jnci/93.1.16
107. Hernandez RK, Sørensen HT, Pedersen L, Jacobsen J, Lash TL. Tamoxifen treatment and risk of deep venous thrombosis and pulmonary embolism: a Danish population-based cohort study. *Cancer.* (2009) 115:4442–9. doi: 10.1002/cncr.24508
108. Miller WR. Aromatase inhibitors: mechanism of action and role in the treatment of breast cancer. *Semin Oncol.* (2003) 30 (4 Suppl. 14):3–11. doi: 10.1016/S0093-7754(03)00302-6
109. Goldvaser H, Barnes TA, Šeruga B, Cescon DW, Ocaña A, Ribnikar D, et al. Toxicity of extended adjuvant therapy with aromatase inhibitors in early breast cancer: a systematic review and meta-analysis. *J Natl Cancer Inst.* (2018) 110:39–9. doi: 10.1093/jnci/djx141
110. Bell RA, Waggoner PM, Boyd WM, Akers RE, Yee CE. Clinical grading of relative afferent pupillary defects. *Arch Ophthalmol.* (1993) 111:938–42. doi: 10.1001/archophth.1993.01090070056019
111. Okwosa TM, Morgans A, Rhee J-W, Reding KW, Maliski S, Plana J-C, et al. Impact of hormonal therapies for treatment of hormone-dependent cancers (breast and prostate) on the cardiovascular system: effects and modifications: a scientific statement from the American heart association. *Circulation.* (2021) 144:e000082. doi: 10.1161/HCG.0000000000000082
112. Schröder F, Crawford ED, Axcrona K, Payne H, Keane TE. Androgen deprivation therapy: past, present and future. *BJU Int.* (2012) 109 (Suppl. 6):1–12. doi: 10.1111/j.1464-410X.2012.11215.x
113. Choi SM, Kam SC. Metabolic effects of androgen deprivation therapy. *Korean J Urol.* (2015) 56:12–8. doi: 10.4111/kju.2015.56.1.12
114. Oka R, Utsumi T, Endo T, Yano M, Kamijima S, Kamiya N, et al. Effect of androgen deprivation therapy on arterial stiffness and serum lipid profile changes in patients with prostate cancer: a prospective study of initial 6-month follow-up. *Int J Clin Oncol.* (2016) 21:389–96. doi: 10.1007/s10147-015-0891-7

115. Saigal CS, Gore JL, Krupski TL, Hanley J, Schonlau M, Litwin MS. Androgen deprivation therapy increases cardiovascular morbidity in men with prostate cancer. *Cancer*. (2007) 110:1493–500. doi: 10.1002/cncr.22933
116. Gandaglia G, Sun M, Popa I, Schiffmann J, Abdollah F, Trinh QD, et al. The impact of androgen-deprivation therapy (ADT) on the risk of cardiovascular (CV) events in patients with non-metastatic prostate cancer: a population-based study. *BJU Int*. (2014) 114:E82–9. doi: 10.1111/bju.12732
117. Bedoschi G, Navarro PA, Oktay K. Chemotherapy-induced damage to ovary: mechanisms and clinical impact. *Fut Oncol*. (2016) 12:2333–44. doi: 10.2217/fon-2016-0176
118. Tiong V, Rozita AM, Taib NA, Yip CH, Ng CH. Incidence of chemotherapy-induced ovarian failure in premenopausal women undergoing chemotherapy for breast cancer. *World J Surg*. (2014) 38:2288–96. doi: 10.1007/s00268-014-2542-y
119. Roeters van Lennep JE, Heida KY, Bots ML, Hoek A. Cardiovascular disease risk in women with premature ovarian insufficiency: a systematic review and meta-analysis. *Eur J Prev Cardiol*. (2016) 23:178–86. doi: 10.1177/2047487314556004
120. Knauff EA, Westerveld HE, Goverde AJ, Eijkemans MJ, Valkenburg O, van Santbrink EJ, et al. Lipid profile of women with premature ovarian failure. *Menopause*. (2008) 15:919–23. doi: 10.1097/gme.0b013e31816b4509
121. Daan NM, Muka T, Koster MP, Roeters van Lennep JE, Lambalk CB, Laven JS, et al. Cardiovascular risk in women with premature ovarian insufficiency compared to premenopausal women at middle age. *J Clin Endocrinol Metab*. (2016) 101:3306–15. doi: 10.1210/jc.2016-1141
122. Saarto T, Blomqvist C, Ehnholm C, Taskinen MR, Elomaa I. Effects of chemotherapy-induced castration on serum lipids and apoproteins in premenopausal women with node-positive breast cancer. *J Clin Endocrinol Metab*. (1996) 81:4453–7. doi: 10.1210/jcem.81.12.8954058
123. Mauri D, Gazouli I, Zarkavelis G, Papadaki A, Mavroidis L, Gkoura S, et al. Chemotherapy associated ovarian failure. *Front Endocrinol*. (2020) 11:572388. doi: 10.3389/fendo.2020.572388
124. Vehmanen L, Saarto T, Blomqvist C, Taskinen MR, Elomaa I. Tamoxifen treatment reverses the adverse effects of chemotherapy-induced ovarian failure on serum lipids. *Br J Cancer*. (2004) 91:476–81. doi: 10.1038/sj.bjc.6601979
125. Spears N, Lopes F, Stefansdottir A, Rossi V, De Felici M, Anderson RA, et al. Ovarian damage from chemotherapy and current approaches to its protection. *Hum Reprod Update*. (2019) 25:673–93. doi: 10.1093/humupd/dmz027
126. Mousavi N, Nohria A. Radiation-induced cardiovascular disease. *Curr Treat Options Cardiovasc Med*. (2013) 15:507–17. doi: 10.1007/s11936-013-0259-0
127. Oren O, Yang EH, Molina JR, Bailey KR, Blumenthal RS, Kopecky SL. Cardiovascular health and outcomes in cancer patients receiving immune checkpoint inhibitors. *Am J Cardiol*. (2020) 125:1920–6. doi: 10.1016/j.amjcard.2020.02.016
128. Leiter A, Carroll E, De Alwis S, Brooks D, Shimol JB, Eisenberg E, et al. Metabolic disease and adverse events from immune checkpoint inhibitors. *Euro J Endocrinol*. (2021) 184:857–65. doi: 10.1530/EJE-20-1362
129. Stein-Merlob AF, Rothberg MV, Ribas A, Yang EH. Cardiotoxicities of novel cancer immunotherapies. *Heart*. (2021) 107:1694–703. doi: 10.1136/heartjnl-2020-318083
130. Drobni ZD, Alvi RM, Taron J, Zafar A, Murphy SP, Rambarat PK, et al. Association between immune checkpoint inhibitors with cardiovascular events and atherosclerotic plaque. *Circulation*. (2020) 142:2299–311. doi: 10.1161/CIRCULATIONAHA.120.049981
131. Baker KS, Ness KK, Steinberger J, Carter A, Francisco L, Burns LJ, et al. Diabetes, hypertension, and cardiovascular events in survivors of hematopoietic cell transplantation: a report from the bone marrow transplantation survivor study. *Blood*. (2007) 109:1765–72. doi: 10.1182/blood-2006-05-022335
132. Kagoya Y, Seo S, Nannya Y, Kurokawa M. Hyperlipidemia after allogeneic stem cell transplantation: prevalence, risk factors, and impact on prognosis. *Clin Transplant*. (2012) 26:E168–75. doi: 10.1111/j.1399-0012.2012.01628.x
133. Blaser BW, Kim HT, Alyea EP 3rd, Ho VT, Cutler C, et al. Hyperlipidemia and statin use after allogeneic hematopoietic stem cell transplantation. *Biol Blood Marrow Transplant*. (2012) 18:575–83. doi: 10.1016/j.bbmt.2011.08.003
134. Marini BL, Choi SW, Byersdorfer CA, Cronin S, Frame DG. Treatment of dyslipidemia in allogeneic hematopoietic stem cell transplant patients. *Biol Blood Marrow Transplant*. (2015) 21:809–20. doi: 10.1016/j.bbmt.2014.10.027
135. Werner E, Alter A, Deng Q, Dammer EB, Wang Y, David SY, et al. Ionizing radiation induction of cholesterol biosynthesis in lung tissue. *Sci Rep*. (2019) 9:12546. doi: 10.1038/s41598-019-48972-x
136. Shaikh S, Channa NA, Talpur FN, Younis M, Tabassum N. Radiotherapy improves serum fatty acids and lipid profile in breast cancer. *Lipids Health Dis*. (2017) 16:92. doi: 10.1186/s12944-017-0481-y
137. Wolny-Rokicka E, Tukiendorf A, Wydmański J, Brzeźniakiewicz-Janus K, Zembroń-Lacny A. The effect of radiotherapy on the concentration of plasma lipids in elderly prostate cancer patients. *Am J Mens Health*. (2019) 13:1557988319846328. doi: 10.1177/1557988319846328
138. Jaiswal S, Fontanillas P, Flannick J, Manning A, Grauman PV, Mar BG, et al. Age-related clonal hematopoiesis associated with adverse outcomes. *N Engl J Med*. (2014) 371:2488–98. doi: 10.1056/NEJMoa1408617
139. Jaiswal S, Natarajan P, Silver AJ, Gibson CJ, Bick AG, Shvartz E, et al. Clonal hematopoiesis and risk of atherosclerotic cardiovascular disease. *N Engl J Med*. (2017) 377:111–21. doi: 10.1056/NEJMoa1701719
140. Calvillo-Argüelles O, Schoffel A, Capo-Chichi JM, Abdel-Qadir H, Schuh A, Carrillo-Estrada M, et al. Cardiovascular disease among patients with aml and CHIP-related mutations. *JACC Cardio Oncol*. (2022) 4:38–49. doi: 10.1016/j.jacc.2021.11.008
141. Bick AG, Pirruccello JP, Griffin GK, Gupta N, Gabriel S, Saleheen D, et al. Genetic interleukin 6 signaling deficiency attenuates cardiovascular risk in clonal hematopoiesis. *Circulation*. (2020) 141:124–31. doi: 10.1161/CIRCULATIONAHA.119.044362
142. Leiva O, Hobbs G, Ravid K, Libby P. Cardiovascular disease in myeloproliferative neoplasms: JACC: cardiooncology state-of-the-art review. *JACC Cardio Oncol*. (2022) 4:166–82. doi: 10.1016/j.jacc.2022.04.002
143. Zullig LL, Sung AD, Khouri MG, Jazowski S, Shah NP, Sitlinger A, et al. Cardiometabolic comorbidities in cancer survivors: JACC: cardiooncology state-of-the-art review. *Cardio Oncol*. (2022) 4:149–65. doi: 10.1016/j.jacc.2022.03.005
144. Cannon CP, Braunwald E, McCabe CH, Rader DJ, Rouleau JL, Belder R, et al. Intensive versus moderate lipid lowering with statins after acute coronary syndromes. *N Engl J Med*. (2004) 350:1495–504. doi: 10.1056/NEJMoa040583
145. Pfeffer MA, Sacks FM, Moyé LA, Brown L, Rouleau JL, Hartley LH, et al. Cholesterol and recurrent events: a secondary prevention trial for normolipidemic patients. *Am J Cardiol*. (1995) 76:98C–106C. doi: 10.1016/S0002-9149(99)80478-0
146. Zhang Y, Liang M, Sun C, Qu G, Shi T, Min M, et al. Statin use and risk of pancreatic cancer: an updated meta-analysis of 26 studies. *Pancreas*. (2019) 48:142–50. doi: 10.1097/MPA.0000000000001226
147. Cho SE, Yang YH, Liu YC, Hsiao HH, Huang CT, Wu CH, et al. Previous exposure to statin may reduce the risk of subsequent non-hodgkin lymphoma: a nationwide population-based case-control study. *PLoS ONE*. (2015) 10:e0139289. doi: 10.1371/journal.pone.0139289
148. Matuszewicz L, Czogalla A, Sikorski AF. Attempts to use statins in cancer therapy: an update. *Tumour Biol*. (2020) 42:1010428320941760. doi: 10.1177/1010428320941760
149. McKay RR, Lin X, Albiges L, Fay AP, Kaymakcalan MD, Mickey SS, et al. Statins and survival outcomes in patients with metastatic renal cell carcinoma. *Euro J Cancer*. (2016) 52:155–62. doi: 10.1016/j.ejca.2015.10.008
150. Hung MS, Chen IC, Lee CP, Huang RJ, Chen PC, Tsai YH, et al. Statin improves survival in patients with EGFR-TKI lung cancer: a nationwide population-based study. *PLoS ONE*. (2017) 12:e0171137. doi: 10.1371/journal.pone.0171137
151. Nabati M, Janbabi G, Esmailian J, Yazdani J. Effect of rosuvastatin in preventing chemotherapy-induced cardiotoxicity in women with breast cancer: a randomized, single-blind, placebo-controlled trial. *J Cardiovasc Pharmacol Ther*. (2019) 24:233–41. doi: 10.1177/1074248418821721
152. Browning DR, Martin RM. Statins and risk of cancer: a systematic review and metaanalysis. *Int J Cancer*. (2007) 120:833–43. doi: 10.1002/ijc.22366
153. Bonovas S, Filioussi K, Tsavaris N, Sitaras NM. Statins and cancer risk: a literature-based meta-analysis and meta-regression analysis of 35 randomized controlled trials. *J Clin Oncol*. (2006) 24:4808–17. doi: 10.1200/JCO.2006.06.3560
154. Sabatine MS, Giugliano RP, Keech AC, Honarpour N, Wiviott SD, Murphy SA, et al. Evolocumab and clinical outcomes in patients with cardiovascular disease. *N Engl J Med*. (2017) 376:1713–22. doi: 10.1056/NEJMoa1615664
155. Schwartz GG, Steg PG, Szarek M, Bhatt DL, Bittner VA, Diaz R, et al. Alirocumab and cardiovascular outcomes after acute coronary syndrome. *N Engl J Med*. (2018) 379:2097–107. doi: 10.1056/NEJMoa1801174
156. Patrono C, Volpe M. PCSK9 inhibition: not just LDL-Cholesterol knock down: a glimmer for cancer. *Eur Heart J*. (2021) 42:1130–1. doi: 10.1093/eurheartj/ehab047
157. Mahboobnia K, Pirro M, Marini E, Grignani F, Bezsonov EE, Jamialahmadi T, et al. PCSK9 and cancer: rethinking the link. *Biomed Pharmacother*. (2021) 140:111758. doi: 10.1016/j.biopha.2021.111758
158. Liu X, Bao X, Hu M, Chang H, Jiao M, Cheng J, et al. Inhibition of PCSK9 potentiates immune checkpoint therapy for cancer. *Nature*. (2020) 588:693–8. doi: 10.1038/s41586-020-2911-7

159. Zimmerman A, Planek MIC, Chu C, Oyenusi O, Paner A, Reding K, et al. Exercise, cancer and cardiovascular disease: what should clinicians advise? *Cardiovasc Endocrinol Metab.* (2021) 10:62. doi: 10.1097/XCE.0000000000000228
160. Squires RW, Shultz AM, Herrmann J. Exercise training and cardiovascular health in cancer patients. *Curr Oncol Rep.* (2018) 20:1–20. doi: 10.1007/s11912-018-0681-2
161. Butcher L, Thomas A, Backx K, Roberts A, Webb R, Morris K. Low-intensity exercise exerts beneficial effects on plasma lipids via PPARF. *Med Sci Sports Exerc.* (2008) 40:1263–70. doi: 10.1249/MSS.0b013e31816c091d
162. Wang Y, Xu D. Effects of aerobic exercise on lipids and lipoproteins. *Lipids Health Dis.* (2017) 16:1–8. doi: 10.1186/s12944-017-0515-5
163. Tofighi A, Rahmani F, Qarakanlou BJ, Babaei S. The effect of regular aerobic exercise on reverse cholesterol transport A1 and apo lipoprotein al gene expression in inactive women. *Iran Red Crescent Med J.* (2015) 17:e26321. doi: 10.5812/ircmj.17(4)2015.26321
164. Ferguson MA, Alderson NL, Trost SG, Essig DA, Burke JR, Durstine JL. Effects of four different single exercise sessions on lipids, lipoproteins, and lipoprotein lipase. *J Appl Physiol.* (1998) 85:1169–74. doi: 10.1152/jappl.1998.85.3.1169
165. Miyashita M, Eto M, Sasai H, Tsujimoto T, Nomata Y, Tanaka K. Twelve-week jogging training increases pre-heparin serum lipoprotein lipase concentrations in overweight/obese middle-aged men. *J Atheroscler Thromb.* (2010) 17:21–9. doi: 10.5551/jat.2337
166. Chow EJ, Chen Y, Hudson MM, Feijen EAM, Kremer LC, Border WL, et al. Prediction of ischemic heart disease and stroke in survivors of childhood cancer. *J Clin Oncol.* (2018) 36:44–52. doi: 10.1200/JCO.2017.74.8673
167. Carver JR, Shapiro CL, Ng A, Jacobs L, Schwartz C, Virgo KS, et al. American society of clinical oncology clinical evidence review on the ongoing care of adult cancer survivors: cardiac and pulmonary late effects. *J Clin Oncol.* (2007) 25:3991–4008. doi: 10.1200/JCO.2007.10.9777
168. Virani SA, Dent S, Brezden-Masley C, Clarke B, Davis MK, Jassal DS, et al. Canadian cardiovascular society guidelines for evaluation and management of cardiovascular complications of cancer therapy. *Can J Cardiol.* (2016) 32:831–41. doi: 10.1016/j.cjca.2016.02.078
169. Zamorano JL, Lancellotti P, Rodriguez Muñoz D, Aboyans V, Asteggiano R, Galderisi M, et al. 2016 ESC position paper on cancer treatments and cardiovascular toxicity developed under the auspices of the ESC committee for practice guidelines: the task force for cancer treatments and cardiovascular toxicity of the European society of cardiology (ESC). *Eur Heart J.* (2016) 37:2768–801. doi: 10.1093/eurheartj/ehw211
170. Douthit NT, Wyatt N, Schwartz B. Clinical impact of reporting coronary artery calcium scores of non-gated chest computed tomography on statin management. *Cureus.* (2021) 13:e14856. doi: 10.7759/cureus.14856
171. Greenland P, Blaha MJ, Budoff MJ, Erbel R, Watson KE. Coronary calcium score and cardiovascular risk. *J Am Coll Cardiol.* (2018) 72:434–47. doi: 10.1016/j.jacc.2018.05.027
172. Armenian SH, Lacchetti C, Barac A, Carver J, Constone LS, Denduluri N, et al. Prevention and monitoring of cardiac dysfunction in survivors of adult cancers: american society of clinical oncology clinical practice guideline. *J Clin Oncol.* (2017) 35:893–911. doi: 10.1200/JCO.2016.70.5400
173. Montgomery DE, Puthumana JJ, Fox JM, Ogunyankin KO. Global longitudinal strain aids the detection of non-obstructive coronary artery disease in the resting echocardiogram. *Eur Heart J Cardiovasc Imaging.* (2012) 13:579–87. doi: 10.1093/ejehocard/jer282
174. Chang SA, Kim RJ. The use of cardiac magnetic resonance in patients with suspected coronary artery disease: a clinical practice perspective. *J Cardiovasc Ultrasound.* (2016) 24:96–103. doi: 10.4250/jcu.2016.24.2.96
175. Dieli-Conwright CM, Lee K, Kiwata JL. Reducing the risk of breast cancer recurrence: an evaluation of the effects and mechanisms of diet and exercise. *Curr Breast Cancer Rep.* (2016) 8:139–50. doi: 10.1007/s12609-016-0218-3
176. Arnett DK, Blumenthal RS, Albert MA, Buroker AB, Goldberger ZD, Hahn EJ, et al. 2019 ACC/AHA guideline on the primary prevention of cardiovascular disease: executive summary: a report of the American college of cardiology/American heart association task force on clinical practice guidelines. *Circulation.* (2019) 140:e563–95. doi: 10.1161/CIR.0000000000000724
177. Kloudova A, Guengerich FP, Soucek P. The role of oxysterols in human cancer. *Trends Endocrinol Metab.* (2017) 28:485–96. doi: 10.1016/j.tem.2017.03.002
178. Kim KH, Lee GY, Kim JI, Ham M, Lee JW, Kim JB. Inhibitory effect of LXR activation on cell proliferation and cell cycle progression through lipogenic activity [S]. *J Lipid Res.* (2010) 51:3425–33. doi: 10.1194/jlr.M007989
179. Bensingler SJ, Bradley MN, Joseph SB, Zelcer N, Janssen EM, Hausner MA, et al. LXR signaling couples sterol metabolism to proliferation in the acquired immune response. *Cell.* (2008) 134:97–111. doi: 10.1016/j.cell.2008.04.052
180. Tavazoie MF, Pollack I, Tanqueco R, Ostendorf BN, Reis BS, Gonsalves FC, et al. LXR/ApoE activation restricts innate immune suppression in cancer. *Cell.* (2018) 172:825–40. e18. doi: 10.1016/j.cell.2017.12.026
181. Ju X, Huang P, Chen M, Wang Q. Liver X receptors as potential targets for cancer therapeutics. *Oncol Lett.* (2017) 14:7676–80. doi: 10.3892/ol.2017.7259
182. Williams KJ, Argus JP, Zhu Y, Wilks MQ, Marbois BN, York AG, et al. An essential requirement for the SCAP/SREBP signaling axis to protect cancer cells from lipotoxicity/SREBP1 signaling protects from lipotoxicity. *Cancer Res.* (2013) 73:2850–62. doi: 10.1158/0008-5472.CAN-13-0382-T
183. DeFilippis AP, Young R, McEvoy JW, Michos ED, Sandfort V, Kronmal RA, et al. Risk score overestimation: the impact of individual cardiovascular risk factors and preventive therapies on the performance of the American heart association-American college of cardiology-atherosclerotic cardiovascular disease risk score in a modern multi-ethnic cohort. *Eur Heart J.* (2017) 38:598–608. doi: 10.1093/eurheartj/ehw301