



COVID-19 and the Heart: Could Transient Takotsubo Cardiomyopathy Be Related to the Pandemic by Incidence and Mechanisms?

Paolo Angelini^{1,2,3*}, Alexander Postalian^{1,2}, Eduardo Hernandez-Vila³, Carlo Uribe¹ and Briana Costello¹

¹ Center for Clinical Research, Texas Heart Institute, Houston, TX, United States, ² Department of Cardiology, CHI St. Luke's Health—Baylor St. Luke's Medical Center, Houston, TX, United States, ³ Division of Cardiology, Department of Internal Medicine, Baylor College of Medicine, Houston, TX, United States

OPEN ACCESS

Edited by:

Gian Marco Rosa,
San Martino Hospital (IRCCS), Italy

Reviewed by:

Edoardo Bertero,
University Hospital Würzburg,
Germany
Stefano Benenati,
San Martino Hospital (IRCCS), Italy

*Correspondence:

Paolo Angelini
pangelini@texasheart.org

Specialty section:

This article was submitted to
General Cardiovascular Medicine,
a section of the journal
Frontiers in Cardiovascular Medicine

Received: 13 April 2022

Accepted: 19 May 2022

Published: 27 June 2022

Citation:

Angelini P, Postalian A,
Hernandez-Vila E, Uribe C and
Costello B (2022) COVID-19
and the Heart: Could Transient
Takotsubo Cardiomyopathy Be
Related to the Pandemic by Incidence
and Mechanisms?
Front. Cardiovasc. Med. 9:919715.
doi: 10.3389/fcvm.2022.919715

Typical emergency hospital care during the COVID-19 pandemic has centered on pulmonary-focused services. Nonetheless, patients with COVID-19 frequently develop complications associated with the dysfunction of other organs, which may greatly affect prognosis. Preliminary evidence suggests that cardiovascular involvement is relatively frequent in COVID-19 and that it correlates with significant worsening of clinical status and mortality in infected patients. In this article, we summarize current knowledge on the cardiovascular effects of COVID-19. In particular, we focus on the association between COVID-19 and transient takotsubo cardiomyopathy (TTC)—two conditions that preliminarily seem epidemiologically associated—and we highlight cardiovascular changes that may help guide future investigations toward full discovery of this new, complex disease entity. We hypothesize that coronary endothelial dysfunction, along with septic state, inflammatory storm, hypercoagulability, endothelial necrosis, and small-vessel clotting, may represent a fundamental hidden link between COVID-19 and TTC. Furthermore, given the likelihood that new genetic mutations of coronaviruses or other organisms will cause similar pandemics and endemics in the future, we must be better prepared so that a substantial complication such as TTC can be more accurately recognized, its pathophysiology better understood, and its treatment made more justifiable, timely, and effective.

Keywords: COVID-19, takotsubo cardiomyopathy, acetylcholine, acute coronary syndrome (ACS), coronary vasospasm, endothelial dysfunction

INTRODUCTION

At the time of this writing, the world population has endured more than 2 years of devastating consequences from the pandemic caused by the SARS-CoV-2 coronavirus and its resulting clinical disease, COVID-19 (1–7). As is well known, the term *coronavirus* comes from the characteristic crown-like arrangement of spike proteins on the viral unit's capsule (**Figure 1A**).

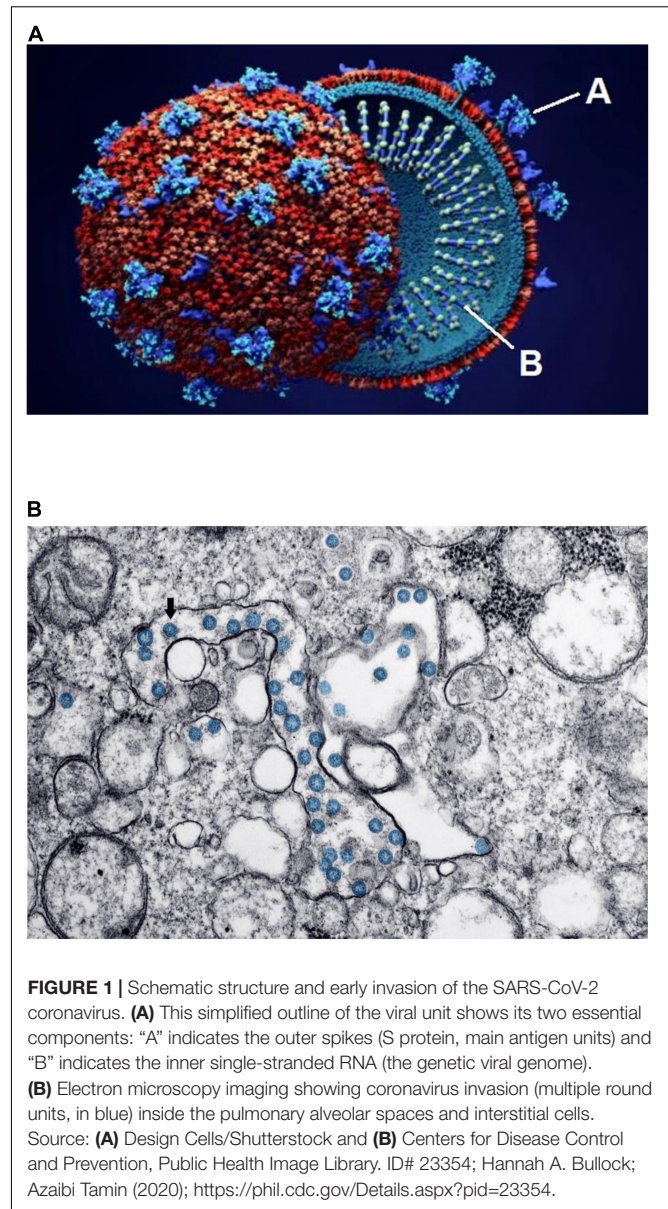
Two other recent, milder pandemics (severe acute respiratory syndrome in 2002 and Middle East respiratory syndrome in 2012) were caused by similar coronaviruses. Despite the immunity resulting from millions of infections and the various strategic plans for infection control—including implementation of effective medical treatment and systematic vaccination across most nations—the number of affected individuals and the mortality rate have continued to rise: According to Johns Hopkins University and Medicine as of March 15, 2022, almost 461 million persons worldwide have had confirmed COVID-19, and more than 6 million have died; in the United States alone, more than 79 million are known to have been infected, and more than 966,000 have died (8).

Coronaviruses enter a cell's cytoplasm by binding their spike S protein to the angiotensin-converting enzyme (ACE)2 receptor, present on the outside membrane of most host cells (2, 5, 9–11). The resulting disease first affects the respiratory system, initially at the nasopharynx but eventually in varying degrees at the pulmonary alveolar level (**Figure 1B**). Almost all other organs can be secondarily affected (3–5, 12–16): Microscopic and molecular examinations have detected SARS-CoV-2 not only in the lungs, but also in the heart, blood vessels, brain, kidneys, bone marrow, eyes, skin, and skeletal muscles (1, 17). Preliminary evidence suggests that cardiovascular involvement is relatively frequent in COVID-19, occurring late in its clinical course, and that it correlates with significant worsening of clinical status and mortality (2, 4, 5, 7, 18–20).

Incidentally, the effects of ACE inhibitors and angiotensin receptor blockers on ACE2-related viral contagion and virulence modulation have not been clearly established; the current practical recommendation for patients with COVID-19 is to continue to take them (2, 4, 5, 17, 21). One recent anatomical, metabolic, and functional study by Bryce et al. (22) found that ACE2 immunochemical H-score expression was depressed in COVID-19 patients compared with controls.

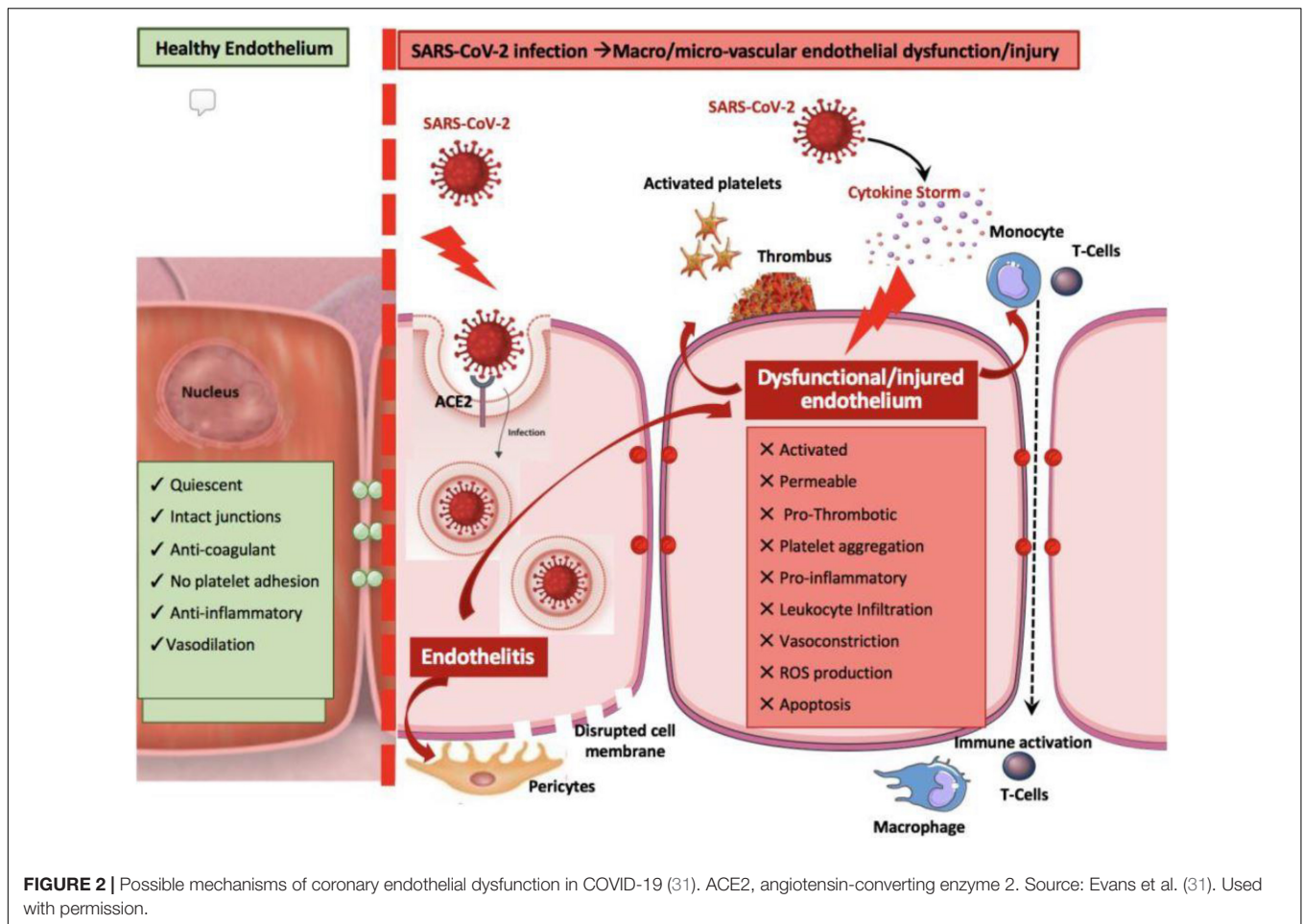
Here, we summarize the current literature-based knowledge on the effects of COVID-19 on the cardiovascular system and highlight cardiovascular changes that may help guide future investigation toward full discovery of this complex disease entity, especially when it precedes the onset of transient takotsubo cardiomyopathy (TTC).¹ We especially underline that endothelial dysfunction is frequent and extensive in this disease and may represent a fundamental hidden link between COVID-19 and TTC, conditions that seem epidemiologically associated.

¹The term *transient takotsubo cardiomyopathy* was initially used descriptively (absent knowledge of the condition's cause) as a visual characterization of the two primary features of this new entity: the shape of territorial dysfunction (**Figure 5**) and its transient occurrence. Since then, no real improvement in the understanding of TTC has been conclusively achieved, but some association between TTC and various factors (e.g., catecholamines, stress, others) suggested to some authors that introducing a new term, *transient takotsubo syndrome*, might express a deeper understanding of its pathophysiology. However, no syndromic causative factors have been successfully shown to be consistently included in the minimal common denominator for this entity. Thus, we prefer to continue using the historical term TTC (which indicates the truly minimal common denominator: a transient cardiomyopathy) while promoting continuous, open-minded investigation into this matter.



THE VIRION

Evidently, SARS-CoV-2 was not identified—either by electron microscopy imaging, antibody studies, or nucleotide sequencing—until December 2019 (4, 23–25). The new virus appeared to be the product of a *de novo* mutation in a well-known class of viruses, possibly in bats, that permitted exceptional human-to-human transmission, thereby greatly facilitating global spread from its seeming origin in China (3–5, 17). Other than monkeys and rats, few animal species can be experimentally infected with SARS coronaviruses (5, 6, 17). Interestingly, SARS-CoV-2 is a Hazard Group 3 pathogen, as are the coronaviruses that cause certain colds, rabies, polio, dengue, hepatitis B, and HIV1 and 2B, among others (2, 4, 17, 23).



THE HEART IN COVID-19

The cardiovascular system is particularly vulnerable to COVID-19 through various, primarily hematogenic, mechanisms:

- Direct viral invasion of the myocardium or interstitial cells, leading to myofiber injury manifested by troponin release into the extracellular space or serum; this may result in myocarditis—either diffuse cardiomyopathy or spotty invasion by inflammatory cells (e.g., lymphocytes, macrophages, and T-cells) and apoptosis (2, 5, 6, 12, 18–21, 23, 26);
- Toxic effects from septic state and inflammatory overdrive (especially as mediated by immune and chemoattractant cytokines) evidenced by fever, tachycardia, hypoxia, and elevation of serum inflammatory markers (10, 12, 13, 17, 19, 22, 27, 28);
- *De novo* hypercoagulability, resulting in vessel thrombosis and occasional patchy ischemic damage to multiple parenchymal tissues (9, 12, 13, 15–17, 22, 26, 28, 29);
- Secondary changes in intercellular signaling mechanisms—for example, coronary endothelial dysfunction (CED), as evidenced primarily by nitric oxide deprivation

(Figure 2)—which can lead to spontaneous coronary spastic syndromes (7, 22, 26, 28, 30–35); and

- Worsening of preexisting cardiovascular conditions and risk factors, including destabilization of atherosclerotic plaques with ulcerations and thrombosis, QTc interval prolongation, electrolyte imbalance, diabetes exacerbation, hypertension exacerbation, and variable levels of systemic catecholamine activation.

Preliminary evidence suggests that the onset of cardiac involvement in patients with COVID-19 generally correlates with significant worsening of clinical status and more frequent onset of heart failure (as evidenced by rise in brain natriuretic peptide [BNP], a marker of fluid retention), heightened need for tracheal intubation or mechanical artificial respiration, and greater mortality (2, 5, 7, 18–20, 26).

In this context, the present essay aims specifically to promote investigation of the pathophysiological mechanisms of TTC and its possible relation to virosis-related CED. It may be that the COVID-19 epidemic provides a convenient epidemiological moment in which to clarify the true incidence, clinical consequences, and pathophysiology of TTC, which could then inform the clinical care of this rare disease. We must admit that current large assessments

of the cardiac effects of COVID-19 usually do not even mention TTC (36).

Pulmonary-To-Myocardial Cell Invasion and Humoral Repercussions

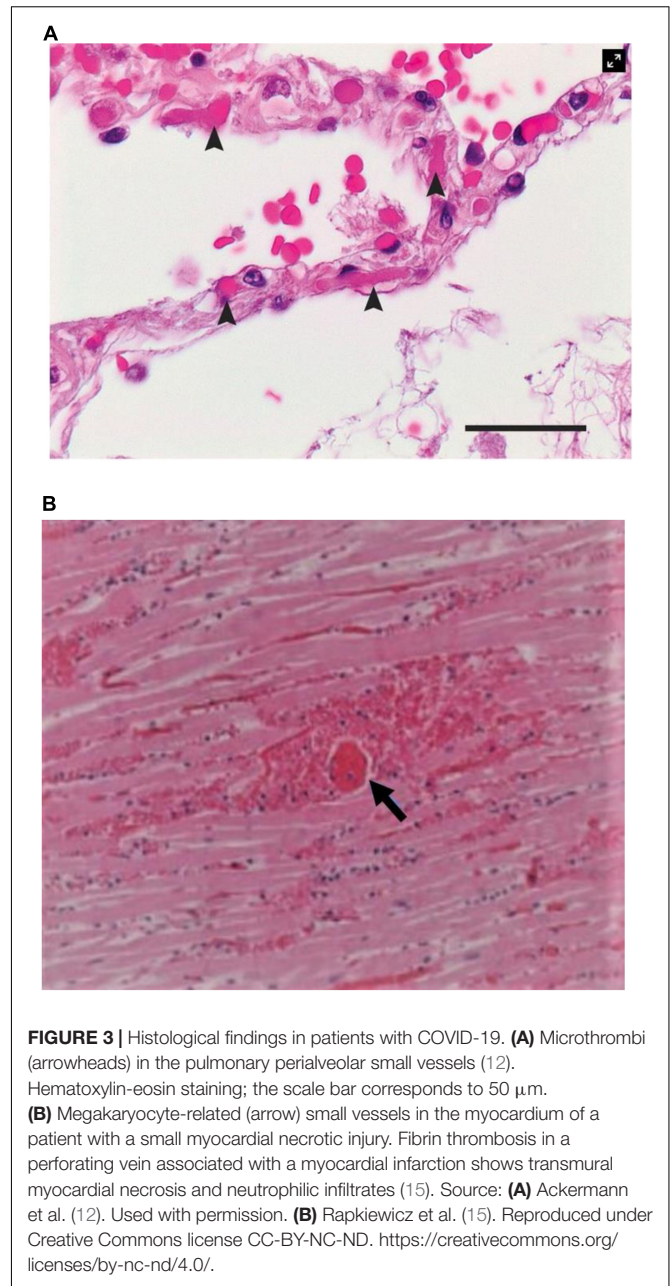
In COVID-19, both electron microscopy and molecular identification of the virus in the upper airways or lungs are done frequently and may be pathognomonic (Figure 1B), whereas this evidence is rarely available from postmortem cardiac studies (5, 7, 12, 14, 16, 19, 22, 26, 32, 37). In a breakthrough pilot study by Ackermann et al. (12), pulmonary autopsy tissues of patients who died from COVID-19 ($n = 7$) were explored in depth by using classic histology, immunohistochemical assay, electron microscopy with microcomputer tomographic imaging, corrosion 3-dimensional casting, and direct multiplexed measurement of gene expression. Findings included:

- Direct infection of endothelial and epithelial cells (type II pneumocytes) with frequent intravascular fibrin-rich thrombi of small perialveolar vessels (Figure 3A) (12);
- Severe intra-alveolar changes, including cellular membrane rupture, epithelial defoliation, and alveolar obliteration by cellular debris and inflammatory T-cells, with hyaline membrane formation;
- Vascular changes, including signs of COVID-19-related pathognomonic neovascularization activity with small-vessel intussusception and prong generation, probably representing failed attempts at reparative neof ormation at sites of vascular obliteration in the lungs; and
- Extensive perialveolar vascular endothelial disruption and clotting (Figure 3) (12, 15).

The authors also noted microvascular changes in the cutaneous lesions of some patients, suggesting that similar changes could be systemic (and possibly cardiac). Endothelialitis, as detected in histological studies of the lungs, could lead to luminal thrombosis related to damaged endothelium in both the lungs and other organs (12, 26, 28).

Being able to more extensively describe such changes in the heart could enable histological and biological documentation of widespread systemic endothelial injury. Whether these changes are systemic and could lead to secondary CED manifestations that might affect the heart is a nebulous but widely discussed possibility in human pathology. Local viral presence was found to be low on ultramicroscopy and on droplet digital polymerase chain reaction in heart studies (12, 28). Similarly, a Brener et al. (32) postmortem investigation of 69 COVID-19 decedents found, on the basis of immunohistology and single-cell nuclei RNA sequencing, that viral load was low in the myocardium but that endothelial damage and cardiac microthrombosis were common (seen in 80% of cases). Whereas inflammatory activity was greatly increased, typical myocardial ischemic necrosis (i.e., incidence of contraction-band necrosis) was rare, even in the presence of troponin leak (38). Both fibroblasts and macrophages were upregulated and correlated with the immune-activation markers.

Our own preliminary experience in the field of TTC leads us to hypothesize that CED is generally a necessary predisposing



condition for the occurrence of spontaneous coronary spasticity (and hence for inducing TTC) in patients during COVID-19 (34, 35, 39–41). Specifically, our group theorizes the following sequence of processes in TTC:

- A typical patient with normal cardiac endothelial function (i.e., no innate or preexisting CED or other predisposing factors) becomes infected with SARS-CoV-2 and develops COVID-19.
- Approximately 1 week after onset of COVID-19, some coronary vessels are affected by direct viral invasion (uncommon) or by hyperactive immune or inflammatory reaction of the endothelium (more likely).

- Various factors—potentially, stress and/or catecholamine surge (either naturally produced or administered for hypotension or shock)—can precipitate acute TTC episodes in the presence of CED; TTC onset follows spontaneous reperfusion as a myocardial stunning event (possibly by a factor of metabolic fatigue or nitric oxide exhaustion).
- The initial spasm can be suppressed by nitroglycerin administration within a few minutes of onset in spontaneous TTC or at acetylcholine (ACh) testing; in patients destined to have delayed spontaneous recurrence, recurrent spasm can be reproduced by early ACh testing (or it may occur spontaneously as recurrent clinical TTC), even a week or more after the initial TTC episode (42).
- After the first 15 min or so of severe spasm, critical ischemia normally induces segmental akinesia and eventual persistent stunning of the dependent myocardium (35); spasm typically resolves spontaneously before the time of hospital admission (60–90 min of TTC), usually leading to a clinical indication for emergency coronary angiography (ST-elevation myocardial infarction [STEMI] protocol) that is typically negative for CAD but positive for TTC; however, only ACh testing can prove increased spasticity.
- The TTC spontaneously resolves within a few days in survivors of the acute event (43); gradually, increased spasticity related to CED gradually dissolves (unknown cause), and after approximately 1 week, TTC generally is no longer reproducible by ACh testing, and recurrent clinical TTC is extremely rare.

If the “CED-to-spastic ischemic spell to myocardial stunning” theory is correct, it is reasonable to propose that CED could underlie the reported increases in the incidence of TTC during the current COVID-19 pandemic (discussed more extensively below) (24, 44, 45). On that basis, the pursuit of associated histological, molecular biology, gene-expression, and functional validation of potential pathophysiological mechanisms is justified, both in animal experimental models and in humans (10).

Microvascular dysfunction in TTC is an unproven hypothesis occasionally postulated by some (9, 25, 46). Although capillaries [the primary location of endothelial disruption and luminal clotting in the lungs (12, 15)] do not have a muscular media or demonstrable spastic capacity (Figure 3) (26), diffuse small-vessel thrombosis in the pulmonary circulation could explain the frequent development of moderate pulmonary hypertension and long-term pulmonary dysfunction in COVID-19 survivors (4, 5, 12, 13, 16, 22, 47). Pulmonary embolism, also related to *de novo* onset of prothrombotic state in COVID-19, has been widely reported (12, 26, 33).

Clinical Cardiac Manifestations of COVID-19

New-onset, sustained precordial chest pain, electrocardiogram (ECG) ST wave changes, and, especially, elevated serum cardiac markers are factors that frequently indicate SARS-CoV-2 myocardial involvement. Potential mechanisms of

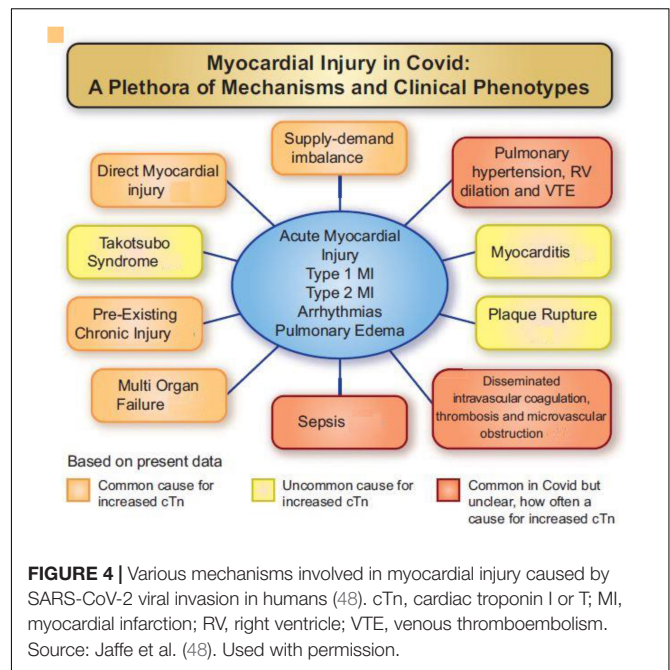


FIGURE 4 | Various mechanisms involved in myocardial injury caused by SARS-CoV-2 viral invasion in humans (48). cTn, cardiac troponin I or T; MI, myocardial infarction; RV, right ventricle; VTE, venous thromboembolism. Source: Jaffe et al. (48). Used with permission.

myocardial damage in COVID-19 (Figure 4) (48) can be summarized as follows.

Acute Myocardial Infarction

Acute myocardial infarction (AMI), although generally rare, is caused by epicardial coronary artery thrombosis (probably induced by sudden progression of preexisting unstable, atherosclerotic soft plaques activated by systemic inflammation, hypercoagulable state, endothelial damage, or hypertensive spells) (29, 33). Localized segmental hypokinesia (more than 1 cm² in echocardiographic area) correlates with ECG changes and, although rare, makes a strong clinical case for AMI (26). Urgent heart catheterization (and potential coronary angioplasty or percutaneous coronary intervention) for unstable angina or AMI in similar, critically ill patients with COVID-19 is mainly indicated by asymmetrical myocardial areas relating to a single coronary branch (mostly AMI due to coronary occlusive atherosclerotic disease [CAD] rather than to TTC).

Surgical intervention is generally avoided in active COVID-19 cases. Only early diagnosis of AMI at a large coronary branch and in the presence of congestive heart failure or shock is a potential indication for percutaneous coronary intervention in patients with COVID-19. The need for antiplatelet medication should not create a major concern in these patients if stenting is needed, but current experience is minimal. According to recent autopsy investigations by the CVPath Institute (26), the most frequent myocardial necrosis, called focal myocyte necrosis (histologically defined as 0.05 mm²–1.0 cm² in area), is probably caused by microthrombi in the myocardial arteriolar network (present in 73% of COVID-19 cases).

Elevated Brain Natriuretic Peptide: Troponin Ratio

Troponin elevation in COVID-19 is frequent (although variable in degree) and only occasionally related to direct myocardial

viral invasion, yet it is clearly associated with higher mortality: The peak troponin level is about 12-fold higher in COVID-19 patients who have died than in survivors, who on average have only minimal elevations (2, 5–7, 18–21). A prominent rise in BNP in the presence of only mild troponin elevation (a seemingly paradoxical event, given the extent of left ventricular dysfunction) is an important parameter in favor of a diagnosis of TTC versus AMI (49, 50). A BNP:troponin ratio—calculated as N-terminal prohormone-BNP (ng/L)/hs-troponin T (μg/L)—higher than 2,889 differentiated TTC from STEMI (sensitivity: 91%; specificity: 95%), and a BNP:troponin ratio higher than 5,000 differentiated well between TTC and non-STEMI (sensitivity: 83%; specificity: 95%). The dissociation between myocardial area and troponin elevation seems to be pathognomonic of stunning or reversible myocardial dysfunction. Although transient ECG ST changes are non-specific, they support the diagnosis of coronary spastic occlusion versus toxic effects from catecholamine surge.

Takotsubo Cardiomyopathy

A TTC diagnosis is unlikely to be made in patients who are not under a cardiologist’s care. Nonetheless, the incidence of TTC has been reported as ranging from 4–8% during the COVID-19 pandemic, higher than the expected 1.7–2.0% seen before the pandemic in patients with acute coronary syndrome (24). Clinical diagnosis is based primarily on the appearance of precordial chest pain (in 80–90% of cases), ECG ST and T wave acute ischemic changes (95%), and the pathognomonic echocardiographic evidence of large symmetrical areas of apical and/or midventricular akinesia or dyskinesia along the longitudinal axis of the left ventricle (Figure 5) (34, 35, 51–53). It is fundamental to determine the reversible nature of such event within 30 days of the initial episode. Prolonged persistence of hypokinesia would suggest subclinical relapsing TTC episodes or wrong diagnosis. In the presence of severe pulmonary

decompensation, a computed tomography angiogram (CTA) showing no critical obstruction of proximal major coronary arteries would be all that is needed to exclude CAD in low-risk clinical presentations (54). In this regard, it is now clear that CTA is equal to or better than invasive coronary angiography for guiding treatment in intermediate-risk clinical presentations (55, 56). Importantly, adding left ventricular end-systolic and end-diastolic imaging to coronary CTA would provide critical information for establishing the TTC diagnosis. If done at the time of emergency room admission, CTAs will in some cases be able to identify coronary spasm. The addition of sublingual nitroglycerin could provide further valuable information.

Early, firm TTC diagnosis (ideally made within 15–60 min of onset) is potentially life-saving and can be subsequently confirmed by ACh testing during coronary angiography (Figures 6, 7). In the absence of ACh testing, final diagnosis of TTC will depend on determining its transient nature (51, 53, 57). Strangely, recurrent TTC after COVID-19 has not yet been mentioned in the literature, even though CED and stress likely remain for long periods (weeks or months) in most TTC cases, especially the serious ones.

Interestingly, catecholamine surge alone is often claimed to cause TTC, but no definite proof has been presented in humans (currently, serum testing is not routinely done), and the use of catecholamines to treat cardiogenic shock in COVID-19 would clearly be contraindicated, as it could cause recurrence. Prospective surveys of catecholamine levels in large continuous series of COVID-19 patients both with and without TTC would be of great interest for correlating catecholamine increase with TTC onset, and experimental provocative catecholamine challenge could be useful for identifying the mechanism(s) of TTC. Generally, if catecholamines should surge before TTC onset, one would not expect a rapid drop in their serum levels after onset of a stressful complication like TTC; more likely, the surge is secondary to TTC occurrence.

Coronary Arteritis

Coronary arteritis, or Kawasaki-like arteriopathy, has been reported as a possible complication of COVID-19 (58). However, such a theory is still poorly delineated in its essential presentation and implications: Early findings in children with classic Kawasaki arteritis include pathognomonic coronary aneurysms that can be visualized even by echocardiography, but these have not been reported in COVID-19. Other typical Kawasaki-associated physical (cutaneous, oral mucosa) findings and blood testing (increased inflammatory state) are non-specific (59). Currently, typical Kawasaki disease is usually considered an arteritis of infants and children younger than 5 years of age that is frequently relatable to some previous viral infection and seemingly due to a subacute autoimmune reaction (i.e., not an early viral infection complication) that leads to coronary media necrosis and arterial wall degeneration (59).

Myocarditis and Pericarditis

Recent pathology reports have confirmed that direct viral myocarditis (the main alternative to AMI, in the presence of troponin elevation) is rare, found in only 4.5% of COVID-19

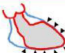




Classification (Type of TTS)	Kagiyama (n=113)	Citro (n=227)	InterTAK (n=1,750)	GEIST (n=1,071)	RETAKO (n=293)
Apical 	64.6 %	77.1 %	81.7 %	88 %	62 %
Mid-Ventricular 	18.6 %	18.1 %	14.6 %	10 %	12 %
Basal 	0 %	4.8 %	2.2 %	2 %	3.7 %
Focal 	0%	NA	1.5 %	NA	6.1 %
Biventricular 	16.8 %	24.5 %	NA	NA	NA

FIGURE 5 | Diagrammatic depiction of the most frequent patterns of transient takotsubo cardiomyopathy (52). Note that more than 95% of the cases in several large registry databases were apical or mid-ventricular. TTS, transient takotsubo cardiomyopathy. Source: Okura (52). Used with permission.

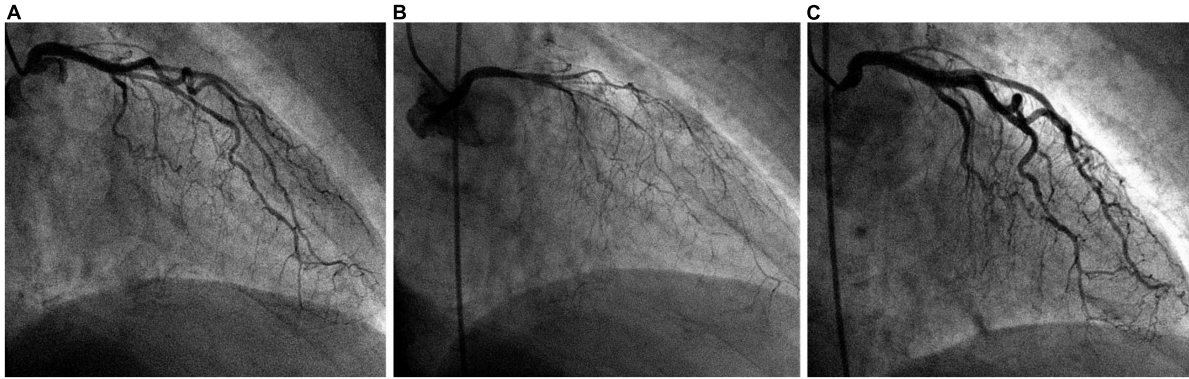


FIGURE 6 | Typical angiographic imaging of the coronary arteries in a patient with a dobutamine-related 4 mm ST-elevation acute ischemic event. **(A)** At baseline, mild diffuse narrowing of all left coronary artery branches was observed. **(B)** After intracoronary acetylcholine infusion, severe and diffuse narrowing appeared, with almost total occlusion of all left coronary artery branches (with chest pain, electrocardiogram changes, and recurrent cardiomyopathy on echocardiography; not shown). **(C)** Immediately after intracoronary nitroglycerin administration, the spasm was relieved. We concluded that coronary endothelial dysfunction was present at baseline and that spasm was stimulated by initial dobutamine testing (outside our hospital) as well as after acetylcholine testing.

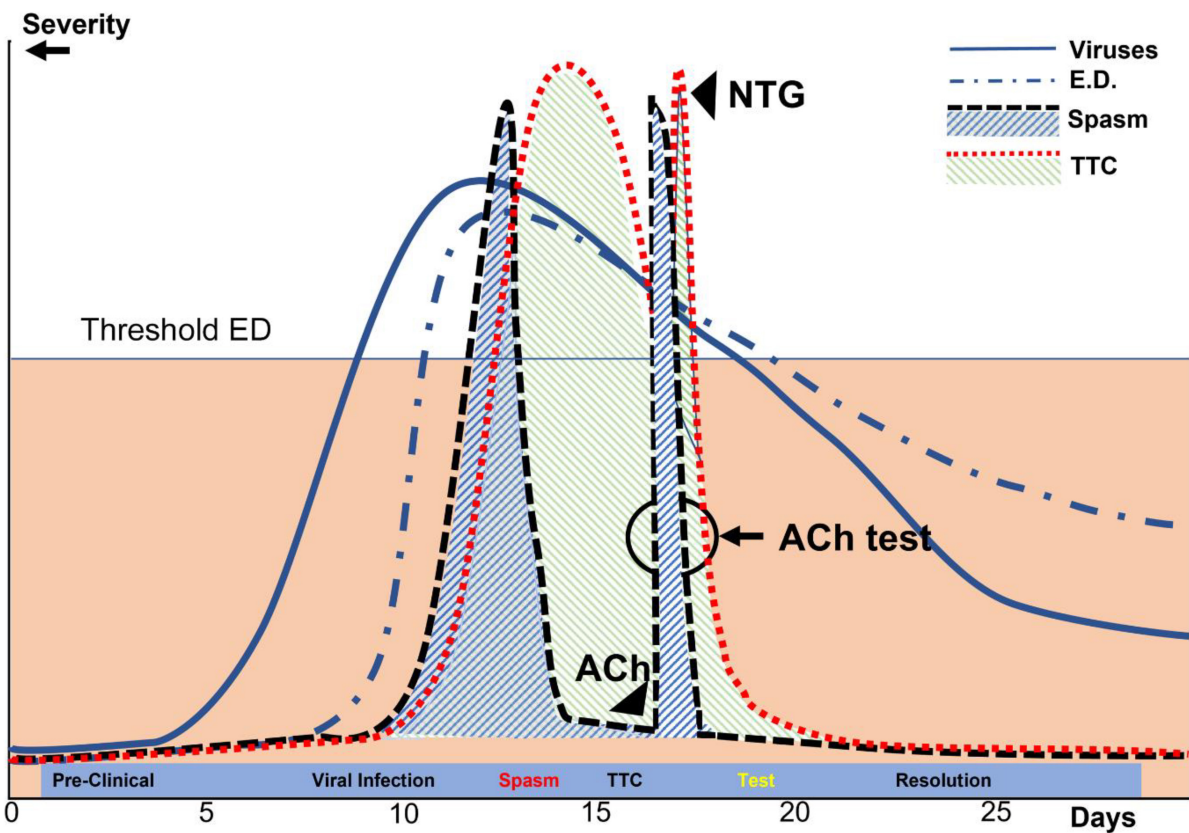


FIGURE 7 | Diagrammatic representation of the processes leading to TTC in patients with COVID-19 over time. In this depiction of our current theory, the y-axis represents the approximate percent change in the maximal possible dysfunction of various parameters, including viral infection, coronary endothelial dysfunction, myocardial dysfunction (TTC), coronary spasm, and ACh testing done during early recovery after TTC. Ach, acetylcholine; ED, endothelial dysfunction; NTG, nitroglycerin; TTC, transient takotsubo cardiomyopathy. The x-axis indicates the number of days since contagion (Day 1).

autopsies or biopsies. Histologically, fulminant myocarditis is characterized by lymphocytic infiltration around areas of myofiber degeneration and edema (26, 60). In severe COVID-19,

myocarditis generally displays low degrees of activity, but whether it leads to significant long-term myocardopathy from multiple small scars in COVID-19 survivors is not clear. More

likely, subacute myocardial damage is caused by inflammatory or immunopathological factors (11, 17, 23, 33, 51).

Still, the difference between AMI and myocarditis is often difficult to define clinically. Late gadolinium enhancement is unlikely to detect myocardial microscarring or interstitial fibrosis during an acute COVID-19 episode; however, it might possibly be used late after an episode. This finding is potentially important, especially for athletes who may develop effort-related arrhythmias or sudden cardiac arrest during strenuous exertion (47, 60, 61).

Pericarditis is rare in COVID-19 (4, 5) and differs from pleuritis that occurs frequently, especially in the presence of pneumonia.

CONCLUSIVE COMMENTS

Typical hospital emergency and critical care during the COVID-19 pandemic has correctly centered on pulmonary-focused services. Nonetheless, patients with COVID-19 frequently develop complications associated with dysfunction of other organs, which could greatly affect prognosis and which often can be effectively treated (such as spastic episodes). Extrapulmonary complications prominently include cardiological issues.

We strongly recommend that at least some TTC-specialized interventional cardiologists be specifically educated and trained to handle pandemic-related emergencies and be called more frequently for consultation and involvement in acute care (even if such care is provided remotely, due to contagion risk). Such specialists could also take part in prospective, coordinated multicenter studies of this rare, still nebulous

pathology. Especially given the probability that new genetic mutations of coronaviruses or other organisms will eventually cause future pandemics, we must better prepare for the possibility that a substantial complication such as TTC will reappear (62). Whether or not within the context of COVID-19 or some future viral pandemic, the real incidence and pathophysiological mechanisms of TTC must be understood, and rational, effective approaches to treatment must be developed.

DATA AVAILABILITY STATEMENT

The original contributions presented in the study are included in the article, further inquiries can be directed to the corresponding author.

AUTHOR CONTRIBUTIONS

PA contributed to the conception, design, statistical analysis, interpretation, and writing of the manuscript. CU contributed to the design of the manuscript and image creation. All authors contributed to manuscript revision and have read and approved the submitted version.

ACKNOWLEDGMENTS

We thank Jeanie F. Woodruff, BS, ELS, of the Department of Scientific Publications at the Texas Heart Institute, for her editorial contributions.

REFERENCES

- Minhas AS, Scheel P, Garibaldi B, Liu G, Horton M, Jennings M, et al. Takotsubo syndrome in the setting of COVID-19. *J Am Coll Cardiol Case Rep.* (2020) 2:1321–5. doi: 10.1016/j.jaccas.2020.04.023
- Madjid M, Safavi-Naeini P, Solomon SD, Vardeny O. Potential effects of coronaviruses on the cardiovascular system: a review. *JAMA Cardiol.* (2020) 5:831–40. doi: 10.1001/jamacardio.2020.1286
- Wiersinga WJ, Rhodes A, Cheng AC, Peacock SJ, Prescott HC. Pathophysiology, transmission, diagnosis, and treatment of coronavirus disease 2019 (COVID-19): a review. *JAMA.* (2020) 324:782–93. doi: 10.1001/jama.2020.12839
- Wu Z, McGoogan JM. Characteristics of and important lessons from the coronavirus disease 2019 (COVID-19) outbreak in China: summary of a report of 72314 cases from the Chinese Center for Disease Control and Prevention. *JAMA.* (2020) 323:1239–42. doi: 10.1001/jama.2020.2648
- Pinney SP, Giustino G, Halperin JL, Mechanick JL, Neibart E, Olin JW, et al. Coronavirus historical perspective, disease mechanisms, and clinical outcomes: JACC focus seminar. *J Am Coll Cardiol.* (2020) 76:1999–2010. doi: 10.1016/j.jacc.2020.08.058
- Babapoor-Farrokhran S, Gill D, Walker J, Rasekhi RT, Bozorgnia B, Amanullah A. Myocardial injury and COVID-19: possible mechanisms. *Life Sci.* (2020) 253:117723. doi: 10.1016/j.lfs.2020.117723
- Lala A, Johnson KW, Januzzi JL, Russak AJ, Paranjpe I, Richter F, et al. Prevalence and impact of myocardial injury in patients hospitalized with COVID-19 infection. *J Am Coll Cardiol.* (2020) 76:533–46. doi: 10.1016/j.jacc.2020.06.007
- Johns Hopkins University & Medicine. *Coronavirus Resource Center Baltimore MD.* (2022). Available online at: <https://coronavirus.jhu.edu/> (accessed February 4, 2022).
- Ky B, Mann DL. COVID-19 clinical trials: a primer for the cardiovascular and cardio-oncology communities. *J Am Coll Cardiol CardioOncol* (2020) 2:254–69. doi: 10.1016/j.jaccas.2020.04.002
- Libby P. The heart in COVID-19: primary target or secondary bystander? *J Am Coll Cardiol Basic Transl Sci.* (2020) 5:537–42. doi: 10.1016/j.jacbs.2020.04.001
- Sakamoto A, Kawakami R, Kawai K, Gianatti A, Pellegrini D, Kutys R, et al. ACE2 (angiotensin-converting enzyme 2) and TMPRSS2 (transmembrane serine protease 2) expression and localization of SARS-CoV-2 infection in the human heart. *Arterioscler Thromb Vasc Biol.* (2021) 41:542–4. doi: 10.1161/ATVBAHA.120.315229
- Ackermann M, Verleden SE, Kuehnel M, Haverich A, Welte T, Laenger F, et al. Pulmonary vascular endothelialitis, thrombosis, and angiogenesis in COVID-19. *N Engl J Med.* (2020) 383:120–8. doi: 10.1056/NEJMoa2015432
- Bradley BT, Maioli H, Johnston R, Chaudhry I, Fink SL, Xu H, et al. Histopathology and ultrastructural findings of fatal COVID-19 infections in Washington State: a case series. *Lancet.* (2020) 396:320–32. doi: 10.1016/S0140-6736(20)31305-2
- Duarte-Neto AN, Monteiro RAA, da Silva LFF, Malheiros DMAC, de Oliveira EP, Theodoro-Filho J, et al. Pulmonary and systemic involvement in COVID-19 patients assessed with ultrasound-guided minimally invasive autopsy. *Histopathology.* (2020) 77:186–97. doi: 10.1111/his.14160
- Rapkiewicz AV, Mai X, Carsons SE, Pittaluga S, Kleiner DE, Berger JS, et al. Megakaryocytes and platelet-fibrin thrombi characterize multi-organ thrombosis at autopsy in COVID-19: a case series. *EClinicalMedicine.* (2020) 24:100434. doi: 10.1016/j.eclinm.2020.100434
- Wichmann D, Sperhake JP, Lütgehetmann M, Steurer S, Edler C, Heinemann A, et al. Autopsy findings and venous thromboembolism in patients with COVID-19: a prospective cohort study. *Ann Intern Med.* (2020) 173:268–77. doi: 10.7326/M20-2003

17. Calabrese LH. Cytokine storm and the prospects for immunotherapy with COVID-19. *Cleve Clin J Med.* (2020) 87:389–93. doi: 10.3949/ccjm.87a.ccc008
18. Guo T, Fan Y, Chen M, Wu X, Zhang L, He T, et al. Cardiovascular implications of fatal outcomes of patients with coronavirus disease 2019 (COVID-19). *JAMA Cardiol.* (2020) 5:811–8. doi: 10.1001/jamacardio.2020.1017
19. Sandoval Y, Januzzi JL Jr, Jaffe AS. Cardiac troponin for assessment of myocardial injury in COVID-19: JACC review topic of the week. *J Am Coll Cardiol.* (2020) 76:1244–58. doi: 10.1016/j.jacc.2020.06.068
20. Xiong TY, Redwood S, Prendergast B, Chen M. Coronaviruses and the cardiovascular system: acute and long-term implications. *Eur Heart J.* (2020) 41:1798–800. doi: 10.1093/eurheartj/ehaa231
21. Amraei R, Rahimi N. COVID-19, renin-angiotensin system and endothelial dysfunction. *Cells.* (2020) 9:1652. doi: 10.3390/cells9071652
22. Bryce C, Grimes Z, Pujadas E, Ahuja S, Beasley MB, Albrecht R, et al. Pathophysiology of SARS-CoV-2: the Mount Sinai COVID-19 autopsy experience. *Mod Pathol.* (2021) 34:1456–67. doi: 10.1038/s41379-021-00793-y
23. Nishiga M, Wang DW, Han Y, Lewis DB, Wu JC. COVID-19 and cardiovascular disease: from basic mechanisms to clinical perspectives. *Nat Rev Cardiol.* (2020) 17:543–58. doi: 10.1038/s41569-020-0413-9
24. Jabri A, Kalra A, Kumar A, Alameh A, Adroja S, Bashir H, et al. Incidence of stress cardiomyopathy during the coronavirus disease 2019 pandemic. *JAMA Netw Open.* (2020) 3:e2014780. doi: 10.1001/jamanetworkopen.2020.14780
25. Ghadri JR, Wittstein IS, Prasad A, Sharkey S, Dote K, Akashi YJ, et al. International expert consensus document on takotsubo syndrome (part I): clinical characteristics, diagnostic criteria, and pathophysiology. *Eur Heart J.* (2018) 39:2032–46. doi: 10.1093/eurheartj/ehy076
26. Pellegrini D, Kawakami R, Guagliumi G, Sakamoto A, Kawai K, Gianatti A, et al. Microthrombi as a major cause of cardiac injury in COVID-19: a pathologic study. *Circulation.* (2021) 143:1031–42. doi: 10.1161/CIRCULATIONAHA.120.051828
27. Abu-Raya B, Migliori GB, O’Ryan M, Edwards K, Torres A, Alffenaar JW, et al. Coronavirus disease-19: an interim evidence synthesis of the World Association for Infectious Diseases and Immunological Disorders (Waidid). *Front Med (Lausanne).* (2020) 7:572485. doi: 10.3389/fmed.2020.572485
28. Varga Z, Flammer AJ, Steiger P, Haberecker M, Andermatt R, Zinkernagel AS, et al. Endothelial cell infection and endotheliitis in COVID-19. *Lancet.* (2020) 395:1417–8. doi: 10.1016/S0140-6736(20)30937-5
29. Alvarez Villela MA, Alkhalil A, Weinreich MA, Koslowsky J, Aoi S, Latib MA. Atypical ST-segment-elevation myocardial infarction presentation in patients with COVID-19 at a high-volume center in New York City. *Tex Heart Inst J.* (2021) 48:e207446. doi: 10.14503/THIJ-20-7446
30. Cugno M, Meroni PL, Gualtierotti R, Griffini S, Grovetti E, Torri A, et al. Complement activation and endothelial perturbation parallel COVID-19 severity and activity. *J Autoimmun.* (2021) 116:102560. doi: 10.1016/j.jaut.2020.102560
31. Evans PC, Rainger GE, Mason JC, Guzik TJ, Osto E, Stamataki Z, et al. Endothelial dysfunction in COVID-19: a position paper of the ESC Working Group for Atherosclerosis and Vascular Biology, and the ESC Council of Basic Cardiovascular Science. *Cardiovasc Res.* (2020) 116:2177–84. doi: 10.1093/cvr/cvaa230
32. Brener MI, Hulke ML, Fukuma N, Golob S, Zilinyi RS, Zhou Z, et al. Clinico-histopathologic and single-nuclei RNA-sequencing insights into cardiac injury and microthrombi in critical COVID-19. *JCI Insight.* (2022) 7:e154633. doi: 10.1172/jci.insight.154633
33. Halushka MK, Vander Heide RS. Myocarditis is rare in COVID-19 autopsies: cardiovascular findings across 277 postmortem examinations. *Cardiovasc Pathol.* (2021) 50:107300. doi: 10.1016/j.carpath.2020.107300
34. Angelini P, Uribe C. Is transient takotsubo syndrome associated with cancer? Why, and with what implications for oncocardiology? *J Am Heart Assoc.* (2019) 8:e013201. doi: 10.1161/JAHA.119.013201
35. Angelini P, Uribe C, Tobis JM. Pathophysiology of takotsubo cardiomyopathy: reopened debate. *Tex Heart Inst J.* (2021) 48:e207490. doi: 10.14503/THIJ-20-7490
36. Abbasi J. The COVID heart—one year after SARS-CoV-2 infection, patients have an array of increased cardiovascular risks. *JAMA.* (2022) 327:1113–4. doi: 10.1001/jama.2022.2411
37. Kawakami R, Sakamoto A, Kawai K, Gianatti A, Pellegrini D, Nasr A, et al. Pathological evidence for SARS-CoV-2 as a cause of myocarditis: JACC review topic of the week. *J Am Coll Cardiol.* (2021) 77:314–25. doi: 10.1016/j.jacc.2020.11.031
38. Kotecha T, Knight DS, Razvi Y, Kumar K, Vimalasvaran K, Thornton G, et al. Patterns of myocardial injury in recovered troponin-positive COVID-19 patients assessed by cardiovascular magnetic resonance. *Eur Heart J.* (2021) 42:1866–78. doi: 10.1093/eurheartj/ehab075
39. Angelini P. Transient left ventricular apical ballooning: a unifying pathophysiological theory at the edge of Prinzmetal angina. *Catheter Cardiovasc Interv.* (2008) 71:342–52. doi: 10.1002/ccd.21338
40. Angelini P. Transient takotsubo syndrome and its recurrence: Why does it happen, why does it end, and why does it rarely reappear? *Int J Cardiol.* (2021) 330:142–4. doi: 10.1016/j.ijcard.2021.02.033
41. Angelini P, Gamero MT. What can we learn from animal models of takotsubo cardiomyopathy? *Int J Cardiol.* (2019) 281:105–6. doi: 10.1016/j.ijcard.2019.01.064
42. Jin Y, Li Q, Guo X. Alternate recurrent coronary artery spasm and stress cardiomyopathy: a case report. *BMC Cardiovasc Disord.* (2020) 20:476. doi: 10.1186/s12872-020-01760-2
43. Angelini P. Do pathologists agree on how to diagnose takotsubo cardiomyopathy? *Forensic Sci Med Pathol.* (2016) 12:226. doi: 10.1007/s12024-015-9739-8
44. Hegde S, Khan R, Zordok M, Maysky M. Characteristics and outcome of patients with COVID-19 complicated by takotsubo cardiomyopathy: case series with literature review. *Open Heart.* (2020) 7:e001360. doi: 10.1136/openhrt-2020-001360
45. Madias JE. COVID-19, POCUS, and takotsubo. *Am J Cardiol.* (2021) 141:157. doi: 10.1016/j.amjcard.2020.12.004
46. Galiuto L, De Caterina AR, Porfidia A, Paraggio L, Barchetta S, Locorotondo G, et al. Reversible coronary microvascular dysfunction: a common pathogenetic mechanism in apical ballooning or tako-tsubo syndrome. *Eur Heart J.* (2010) 31:1319–27. doi: 10.1093/eurheartj/ehq039
47. Daniels CJ, Rajpal S, Greenshields JT, Rosenthal GL, Chung EH, Terrin M, et al. Prevalence of clinical and subclinical myocarditis in competitive athletes with recent SARS-CoV-2 infection: results from the Big Ten COVID-19 Cardiac Registry. *JAMA Cardiol.* (2021) 6:1078–87. doi: 10.1001/jamacardio.2021.2065
48. Jaffe AS, Cleland JGF, Katus HA. Myocardial injury in severe COVID-19 infection. *Eur Heart J.* (2020) 41:2080–2. doi: 10.1093/eurheartj/ehaa447
49. Fröhlich GM, Schoch B, Schmid F, Keller P, Sudano I, Lüscher TF, et al. Takotsubo cardiomyopathy has a unique cardiac biomarker profile: NT-proBNP/myoglobin and NT-proBNP/troponin T ratios for the differential diagnosis of acute coronary syndromes and stress induced cardiomyopathy. *Int J Cardiol.* (2012) 154:328–32. doi: 10.1016/j.ijcard.2011.09.077
50. Scantlebury DC, Prasad A. Diagnosis of takotsubo cardiomyopathy. *Circ J.* (2014) 78:2129–39. doi: 10.1253/circj.14-0859
51. Dweck MR, Bularga A, Hahn RT, Bing R, Lee KK, Chapman AR, et al. Global evaluation of echocardiography in patients with COVID-19. *Eur Heart J Cardiovasc Imaging.* (2020) 21:949–58. doi: 10.1093/ehjci/jeaa178
52. Okura H. Update of takotsubo syndrome in the era of COVID-19. *J Cardiol.* (2021) 77:361–9. doi: 10.1016/j.jjcc.2020.10.004
53. Templin C, Ghadri JR, Diekmann J, Napp LC, Bataiosu DR, Jaguszewski M, et al. Clinical features and outcomes of takotsubo (stress) cardiomyopathy. *N Engl J Med.* (2015) 373:929–38. doi: 10.1056/NEJMoa1406761
54. Secco GG, Tarantini G, Mazzarotto P, Garbo R, Parisi R, Maggio S, et al. Invasive strategy for COVID patients presenting with acute coronary syndrome: the first multicenter Italian experience. *Catheter Cardiovasc Interv.* (2021) 97:195–8. doi: 10.1002/ccd.28959
55. Gulati M, Levy PD, Mukherjee D, Amsterdam E, Bhatt DL, Birtcher KK, et al. 2021 AHA/ACC/ASE/CHEST/SAEM/SCCT/SCMR guideline for the evaluation and diagnosis of chest pain: executive summary: a report of the American College of Cardiology/American Heart Association Joint Committee on Clinical Practice Guidelines. *Circulation.* (2021) 144:e368–454. doi: 10.1161/CIR.0000000000001030
56. Maurovich-Horvat P, Bossert M, Kofoed KF, Rieckmann N, Benedek T, Donnelly P, et al. CT or invasive coronary angiography in stable chest pain. *N Engl J Med.* (2022) 386:1591–602. doi: 10.1056/NEJMoa2200963
57. Templin C, Manka R, Cammann VL, Szawan KA, Gotschy A, Karolyi M, et al. Takotsubo syndrome in coronavirus disease 2019. *Am J Cardiol.* (2021) 138:118–20. doi: 10.1016/j.amjcard.2020.10.005

58. Ouldali N, Pouletty M, Mariani P, Beyler C, Blachier A, Bonacorsi S, et al. Emergence of Kawasaki disease related to SARS-CoV-2 infection in an epicentre of the French COVID-19 epidemic: a time-series analysis. *Lancet Child Adolesc Health*. (2020) 4:662–8. doi: 10.1016/S2352-4642(20)30175-9
59. McCrindle BW, Rowley AH, Newburger JW, Burns JC, Bolger AF, Gewitz M, et al. Diagnosis, treatment, and long-term management of Kawasaki disease: a scientific statement for health professionals from the American Heart Association. *Circulation*. (2017) 135:e927–99. doi: 10.1161/CIR.0000000000000484
60. Kim JH, Levine BD, Phelan D, Emery MS, Martinez MW, Chung EH, et al. Coronavirus disease 2019 and the athletic heart: emerging perspectives on pathology, risks, and return to play. *JAMA Cardiol*. (2021) 6:219–27. doi: 10.1001/jamacardio.2020.5890
61. Starekova J, Bluemke DA, Bradham WS, Eckhardt LL, Grist TM, Kusmirek JE, et al. Evaluation for myocarditis in competitive student athletes recovering from coronavirus disease 2019 with cardiac magnetic resonance imaging. *JAMA Cardiol*. (2021) 6:945–50. doi: 10.1001/jamacardio.2020.7444
62. Chang A, Wang YG, Jayanna MB, Wu X, Cadaret LM, Liu K. Mortality correlates in patients with takotsubo syndrome during the COVID-19 pandemic. *Mayo Clin Proc Innov Qual Outcomes*. (2021) 5:1050–5. doi: 10.1016/j.mayocpiqo.2021.09.008

Conflict of Interest: The authors declare that the research was conducted in the absence of any commercial or financial relationships that could be construed as a potential conflict of interest.

Publisher's Note: All claims expressed in this article are solely those of the authors and do not necessarily represent those of their affiliated organizations, or those of the publisher, the editors and the reviewers. Any product that may be evaluated in this article, or claim that may be made by its manufacturer, is not guaranteed or endorsed by the publisher.

Copyright © 2022 Angelini, Postalian, Hernandez-Vila, Uribe and Costello. This is an open-access article distributed under the terms of the Creative Commons Attribution License (CC BY). The use, distribution or reproduction in other forums is permitted, provided the original author(s) and the copyright owner(s) are credited and that the original publication in this journal is cited, in accordance with accepted academic practice. No use, distribution or reproduction is permitted which does not comply with these terms.