



Prevalence of Healed Plaque and Factors Influencing Its Characteristics Under Optical Coherence Tomography in Patients With Coronary Artery Disease: A Systematic Review, Meta-Analysis, and Meta-Regression

OPEN ACCESS

Edited by:

Gianluca Calazzo,
Azienda Sanitaria Locale Caserta, Italy

Reviewed by:

Alberto Boi,
G. Brotzu Hospital, Italy
Alberto Polimeni,
University of Magna Graecia, Italy

*Correspondence:

Yujie Zhou
azzyj12@163.com
Qianyun Guo
gqydx3000@163.com

[†]These authors have contributed
equally to this work and share last
authorship

Specialty section:

This article was submitted to
Coronary Artery Disease,
a section of the journal
Frontiers in Cardiovascular Medicine

Received: 19 August 2021

Accepted: 15 October 2021

Published: 22 November 2021

Citation:

Feng X, Liu Y, Yang J, Zhai G, Zhou Y
and Guo Q (2021) Prevalence of
Healed Plaque and Factors Influencing
Its Characteristics Under Optical
Coherence Tomography in Patients
With Coronary Artery Disease: A
Systematic Review, Meta-Analysis,
and Meta-Regression.
Front. Cardiovasc. Med. 8:761208.
doi: 10.3389/fcvm.2021.761208

Xunxun Feng, Yang Liu, Jiaqi Yang, Guangyao Zhai, Yujie Zhou*[†] and Qianyun Guo*[†]

Beijing Key Laboratory of Precision Medicine of Coronary Atherosclerotic Disease, Department of Cardiology, Clinical Center for Coronary Heart Disease, Beijing Institute of Heart Lung and Blood Vessel Disease, Beijing Anzhen Hospital, Capital Medical University, Beijing, China

Aim: The purpose of this study was to determine the prevalence of healed plaque and its characteristics under optical coherence tomography (OCT) through a formal systematic review, meta-analysis, and meta-regression.

Methods and Results: Thirteen studies were selected from MEDLINE, EMBASE, Cochrane, and online databases. The overall incidence of healed plaques was 40% (95% CI: 39–42), with 37% (95% CI: 35–39) in patients with acute coronary syndrome (ACS) and with 46% (95% CI: 43–49) in patients with stable angina pectoris (SAP). The incidence of healed plaque among culprit plaques (48%, 95% CI: 46–50) was nearly two times higher than that among non-culprit plaques (24%, 95% CI: 21–27). The incidence of thin cap fibroatheroma (TCFA), plaque rupture, microvessel, macrophage accumulation, and calcification was significantly higher in the healed plaque group. Meta-regression revealed an association between smoking ($P = 0.033$) and healed plaque rupture. Gender ($P = 0.047$) was independently associated with macrophage accumulation, and mean low-density lipoprotein cholesterol (LDL-C) was independently associated with microvessel.

Conclusions: In summary, with a total incidence of 40%, the incidence of healed plaques under OCT was higher in SAP than in ACS, and higher in culprit plaques than in non-culprit plaques. Higher incidence of TCFA, plaque rupture, microvessel, macrophage accumulation, and calcification was found in the healed-plaque group. Smoking, gender, and mean LDL-C level were associated with healed-plaque characteristics.

Keywords: prevalence, healed plaque, characteristics, optical coherence tomography, coronary artery disease, systematic review, meta-analysis, meta-regression

INTRODUCTION

Healed plaque is a type of coronary atherosclerotic plaque that is characterized by infiltration with inflammatory cells, endothelial cells, and smooth muscle cells, and its formation may be associated with a stable lesion-contained thrombus. The newly synthesized type III collagen in the early healing stage, which is rich with proteoglycan and loosely aligned, is eventually replaced by type I collagen in the late healing stage. Therefore, most of the thrombotic substances in different stages have a layered structure after plaque rupture. Thus, the most prominent feature of healed plaques is a layered structure of organized thrombus and/or collagen (1–3).

In terms of pathophysiology of the healed plaque, previous autopsy studies have shown a high incidence of healed plaques, ~61–73% in the culprit and non-culprit plaques (4). In addition, in an 18-month follow-up study using angioscopy to clarify the healing process of disrupted culprit plaques in patients with myocardial infarction, it was detected that the healing process of plaques showed the decrease in thrombogenicity and color grade, which were aggravated particularly in patients with diabetes mellitus and hyperlipidemia (5). Moreover, in non-culprit lesions, plaque healing and disruption may be a pan-coronary involvement in acute myocardial infarction patients with the decreasing in thrombogenicity and yellow color grade during angiographic observations among disrupted and actively thrombogenic yellow plaques (6). In addition, based on the importance of angiogenesis for plaque healing, Brezinski et al. showed that longitudinal angiogenesis presented long necrotic cores and failed to approach some areas in the intimal cap. As a result of impaired healing mechanisms for acute coronary syndrome (ACS), they thought that these areas were at risk for thinning, rupturing, or eroding (7).

Optical coherence tomography (OCT) is an intravascular imaging technique allowing a detailed view of the coronary artery wall structure. OCT can identify macrophages in atherosclerotic plaques, and its high resolution can detect thin cap fibroatheroma (TCFA), plaque rupture, and macrophage accumulation in most of the layered plaques (8, 9). Healed plaques are recognized by different optical features on different layers. These features reflect the acute events that have previously undergone the healing process. Thanks to its recent development and application, OCT has been proven to be a useful tool for the detection of healed plaques.

Healing of an atherosclerotic plaque is a dynamic process that occurs after plaque rupture, which could prevent thrombus, promote plaque renovation, and restore vascular integrity. However, the clinical significance of plaque healing remains a controversial issue. Plaque healing may help atherosclerotic patients avoid ACS, but it can lead to chronic coronary syndrome (10). In addition, healed plaques proved to be the predictor of

rapid plaque progression as well as fatty plaques and TCFA, and a new layer was found in more than half of the rapidly progressing lesions during clinical study follow-up (11). Therefore, healed plaques play an important role in patients with coronary artery disease (CAD), and efficient identification of healed plaques by OCT provides a certain reference value for clinical practice.

We conducted a systematic review, meta-analysis, and meta-regression to evaluate the prevalence of healed plaques and their characteristics under OCT observation.

METHODS

Protocol Registration and Standards

We carried out this study in accordance with the preferred reporting items for systematic reviews and meta-analyses (PRISMA) guidelines. The protocol of this meta-analysis was registered at PROSPERO, International Prospective Register of Systematic Reviews [CRD42020186412], and this conformed with the meta-analysis of observational studies in epidemiology guidelines (12) and preferred reporting items for systematic review and meta-analysis (13).

Data Sources and Search Strategy

Three independent researchers (FXX, LY, and YJQ) searched MEDLINE, EMBASE, and Cochrane databases to identify potentially relevant studies from the inception of databases to Sep 20, 2021. The incorporating keywords including “healed,” “layered,” “healing,” and “healings” were searched and combined with headings from medical subject and Emtree including “Atherosclerotic Plaque,” “Optical Coherence Tomography,” and “Wound Healing” or “Healing” (**Supplementary Tables 1–3**).

Study Selection

Three independent researchers (FXX, ZGY, and GQY) discussed the retrieved studies after reading their own title and/or abstract, with differences solved with consensus. The inclusion criteria were as follows: (1) *in vivo* OCT of coronary arteries conducted in clinical patients; (2) human studies including OCT examination and evaluating the characteristics of coronary plaques; (3) studies considering factors influencing healed plaque’s morphology. The exclusion criteria were as follows: (1) duplicate reporting, conference abstract, or review; (2) studies that mentioned healed plaque but did not subgroup the data into healed plaque group and non-healed plaque group; (3) studies that could not explain factors influencing healed-plaque morphology.

Types of Studies and Definition

Longitudinal, cross-sectional, and interventional studies reporting baseline data to assess characteristics of healed plaques were considered. Moreover, studies had to have been peer-reviewed and published in English to be included, and the assessment of the study quality was based on the Newcastle-Ottawa scale, as shown in **Supplementary Table 4**. Culprit plaques were identified by coronary angiography, electrocardiographic changes, left ventricular wall motion abnormalities, or echocardiography. In patients with multiple stenoses, plaques showing the most severe stenosis on

Abbreviations: ACS, acute coronary syndrome; OCT, Optical coherence tomography; TCFA, thin cap fibroatheroma; CAD, coronary artery disease; PRISMA, Preferred Reporting Items for Systematic Reviews and Meta-Analyses; SAP, stable angina pectoris; SD, standard deviation; OR, odds ratio; CI, confidence interval; LDL-C, low-density lipoprotein cholesterol; MLA, minimal lumen area; RLA, reference lumen area; AS, area stenosis.

angiography or OCT or with acute thrombosis were thought to be the culprits (14–16). In the meta regression, the incidence rates of various characteristics of healed plaque were the primary end points. Clinical factors influencing the on healed-plaque characteristics were tested using meta-regression analysis in the overall population and in different clinical subsets of patients such as ACS and stable angina pectoris (SAP) (17).

Data Extraction and Quality Assessment

Two independent researchers (FXX and GQY) reviewed the titles and abstracts of all studies independently. The full texts of all potentially qualifying articles were assessed. To extract relevant information from 13 included studies, a standardized form was used. Two independent researchers (FXX and GQY) evaluated the risk of bias for the finally included 13 studies in accordance with the Cochrane Handbook for Systematic Reviews of Interventions. Disagreements were resolved by discussion among the researchers until they reached accordance.

Statistical Analysis

Continuous variables were shown as mean \pm standard deviation (SD). Values for categorical variables were listed as odds ratio (ORs) with 95% confidence interval (CI). The meta-analysis was implemented using the fixed-effects model when the I^2 value was $<50\%$. Otherwise, the random effects model was used. Original data were first converted by the double arcsine method to ensure their compliance with the normal distribution. The inverse variance method was used to calculate the pooled incidence of healed plaque and 95% CIs. Subgroup meta-analyses were conducted for categorical variables [classification of CAD (ACS v. SAP) and type of plaques (culprit vs. non-culprit)] (18, 19). For the outcomes of all data with statistical heterogeneity from moderate to high ($I^2 \geq 50\%$), subgroup analyses were performed to investigate potential moderators of the effect. As previously reported (20), meta-regression was performed to reveal the potential sources of heterogeneity using random-effects models with the restricted maximum likelihood estimation and the adjustment of Knapp/Hartung for estimation of standard errors of the estimated coefficients, which were conducted for continuous variables when at least four studies reported on a given instrument [including demographics: age (mean years), gender (%male); laboratory examination: low-density lipoprotein cholesterol (LDL-C; mean); risk factors of CAD: diabetes mellitus (%), hypertension (%), hyperlipidemia (%), smoking (%), and statin therapy (%)]. The publication bias of the healed plaque prevalence and characteristics was judged by the funnel plot and Egger's test (21). P -value (two-tailed) < 0.05 was considered statistically significant. All data were analyzed using Stata/MP version 15 (StataCorp, College Station, Texas) and Review Manager 5.3.

RESULTS

A total of 369 potential studies were screened. Among them, 13 studies were identified for inclusion and further evaluation, and then two were excluded because they did not distinguish between healed and non-healed plaques. The complete process

of identification and exclusion of studies is described in detail in the PRISMA flowchart (**Supplementary Figure 1**). A total of 3,141 patients were included in 13 studies, covering the period from 2018 to 2021 (**Tables 1, 2**). Further details of the coronary angiography and characteristics of OCT in each study are shown in **Table 3**.

Prevalence of Healed Plaque

To analyze the prevalence of healed plaques, we performed a single-arm meta-analysis. In the general population, the incidence of healed plaques was 40% (95% CI: 39–42). Stratified by the manifestations of disease, the incidence of healed plaques was 37% (95% CI: 35–39) in the patients with ACS and 46% (95% CI: 43–49) in patients with SAP. Moreover, at the level of plaques, the incidence of healed plaques among culprit plaques (48%, 95% CI: 46–50) was higher than that among non-culprit plaques (24%, 95% CI: 21–27) (**Figure 1**). Heterogeneity among studies that evaluated healed plaques was generally extensive ($I^2 > 95\%$). On the one hand, the heterogeneity may have been driven by the variable estimation of healed-plaque morphology in the included studies and specific characteristics that introduced a degree of heterogeneity into the analysis. The specific definitions of each characteristic in healed plaque in every study are listed in **Supplementary Table 5**. On the other hand, in the culprit lesion intraplaque hemorrhage, the performance of thrombus aspiration prior to OCT imaging might have altered the underlying healed plaque morphology.

Morphology of Healed Plaques

A total of 13 studies reported the morphological differences between healed plaque and non-healed plaque. Potential sources of heterogeneity were explored by subgroup analysis through traditional classification, including the type of CAD (ACS vs. SAP) and the type of plaques (culprit vs. non-culprit) from the included studies.

The incidence of TCFA, plaque rupture, microvessel, macrophage accumulation, and calcification was higher in the healed plaque group (**Figure 2**), whereas minimal lumen area (MLA) and reference lumen area (RLA) were smaller. Meanwhile, the area stenosis (AS) and lesion length were higher than those in the non-healed plaque group (**Figure 3**). According to the subgroup analysis of culprit and non-culprit plaques, the incidence of macrophage accumulation ($P < 0.05$) was generally higher in the healed plaques, whereas the microvessel and calcification were higher only in culprit group. MLA was lower in healed plaques, but AS was higher than that in non-healed plaques only in the culprit group. Lesion length was also greater in healed plaques only in the culprit group. In the ACS and SAP subgroups, the incidence of TCFA was higher in healed plaques. MLA was lower in healed plaques, while AS showed the opposite trend (**Supplementary Figures 2–5**).

Meta Regression

In the meta-regression, we did not find the potential source of heterogeneity in the culprit or non-culprit data. Regarding the characteristics of healed plaque, we observed that in the entire population smoking was associated with heterogeneity in

TABLE 1 | Characteristics of included studies.

References	Location	Study design	No. of Patients with variety	Primary endpoint	Mortality reported	Follow-up time
Shimokado et al. (22)	Japan	Retrospective	60; SAP	–	–	–
Fracassi et al. (8)	America	Retrospective	376; ACS	Cardiac death, acute myocardial infarction, ischemia-driven revascularization, and rehospitalization	Yes	1 year
Okamoto et al. (23)	Japan	Retrospective	166; SAP	–	–	–
Russo et al. (24)	America	Retrospective	349; ACS	–	–	–
Wang et al. (16)	China	Retrospective	204; ACS+SAP	Death from any cause, myocardial infarction, and target lesion revascularization	Yes	1 year
Araki et al. (25)	America	Retrospective	313; ACS+SAP	–	–	–
Kurihara et al. (26)	America	Retrospective	193; ACS+SAP	Cardiac death, myocardial infarction, and target lesion revascularization	Yes	329 ± 90 days
Kurihara et al. (27)	America	Retrospective	265; ACS+SAP	Cardiac death, ACS or revascularization	Yes	2 years
Russo et al. (28)	America	Prospective	163; SAP	–	–	–
Usui et al. (15)	Japan	Retrospective	538; SAP+ACS	Cardiac death, myocardial infarction, or ischemia-driven revascularization	Yes	3 years
Dai et al. (14)	China	Prospective	325; ACS	Cardiac death, recurrent myocardial infarction, ischemia-driven revascularization, or rehospitalization	Yes	1 year
Li et al. (29)	China	Prospective	156; ACS	–	–	–
Kimura et al. (30)	Japan	Retrospective	33; SAP	New-onset unstable angina pectoris, non-fatal myocardial infarction, target vessel revascularization, or cardiac death	Yes	474 days

ACS, acute coronary syndrome; SAP, stable angina pectoris.

TABLE 2 | Baseline characteristics of included studies.

Author	Male, %	DM, %	HT, %	Smoking, %	Previous PCI, %	Dyslipidemia, %	BMI	Age, y	TC, mg/dL	TG, mg/dL	LDL-C mg/dL	HDL-C mg/dL
Shimokado et al.	80	48	92	55	48	80	UK	68 ± 10	UK	159 ± 83	103 ± 29	42 ± 11
Fracassi et al.	76	27	51	55	12	36	24 ± 6	58 ± 12	181 ± 44	138 ± 67	116 ± 39	45 ± 11
Okamoto et al.	73	43	80	51	46	74	24 ± 4	69 ± 12	165 ± 32	128 ± 66	98 ± 31	47 ± 13
Russo et al.	76	27	51	56	11	34	25 ± 3	57 ± 11	178 ± 42	138 ± 77	116 ± 40	45 ± 11
Wang et al.	81	28	64	34	27	67	26 ± 5	59 ± 11	179 ± 46	145 ± 79	102 ± 35	46 ± 20
Araki et al.	77	30	64	27	31	70	25 ± 4	61 ± 11	177 ± 44	161 ± 66	104 ± 38	45 ± 13
Kurihara et al.-1	78	36	64	26	UK	68	UK	62 ± 11	183 ± 46	161 ± 116	109 ± 39	44 ± 13
Kurihara et al.-2	80	28	63	28	UK	70	UK	60 ± 11	172 ± 44	169 ± 131	99 ± 36	43 ± 12
Russo et al.	79	27	69	19	40	71	25 ± 4	64 ± 10	157 ± 38	102 ± 65	89 ± 29	48 ± 16
Usui et al.	83	37	67	35	23	58	UK	67 ± 10	UK	UK	106 ± 34	46 ± 12
Dai et al.	74	21	40	51	UK	51	UK	56 ± 11	184 ± 41	117 ± 65	112 ± 37	54 ± 14
Li et al.	81	30	55	74	UK	82	26 ± 3	57 ± 11	UK	175 ± 42	113 ± 33	41 ± 9
Kimura et al.	82	61	52	73	UK	70	UK	68 ± 8	149 ± 82	UK	87 ± 35	47 ± 11

BMI, body mass index; DM, diabetes mellitus; HT, hypertension; PCI, percutaneous coronary intervention; TC, total cholesterol; TG, triglycerides; LDL-C, low-density lipoprotein cholesterol; HDL-C, high-density lipoprotein cholesterol; UK, unknown.

TABLE 3 | Angiographic features and OCT-derived plaque characteristics.

References	Angiographic features				Plaque Characteristics Analyzed									
	Culprit vessel			Multivessel disease, %	Qualitative analysis						Quantitative analysis			
	LAD, %	RCA, %	LCX, %		TCFA Plaque rupture	Thrombus	Microvessel	Macrophages	Calcification	MLA	RLA	AS	Lesion length	
Shimokado et al. (22)	60	20	20	82	N	N	N	Y	Y	Y	Y	Y	Y	Y
Fracassi et al. (8)	54	35	11	44	Y	Y	Y	Y	Y	Y	Y	Y	Y	N
Okamoto et al. (23)	55	24	16	67	Y	Y	N	Y	Y	Y	Y	N	N	N
Russo et al. (24)	77	58	47	27	Y	Y	N	Y	Y	Y	Y	Y	Y	Y
Wang et al. (16)	53	30	17	51	Y	Y	Y	Y	N	Y	Y	Y	Y	Y
Araki et al. (25)	57	27	16	53	Y	Y	Y	Y	Y	Y	Y	Y	Y	N
Kurihara et al. (26)	60	25	16	UK	N	N	Y	N	Y	Y	Y	Y	Y	N
Kurihara et al. (27)	56	28	16	UK	N	N	N	N	Y	N	Y	Y	Y	N
Russo et al. (28)	61	20	18	54	Y	N	Y	Y	Y	Y	Y	Y	Y	Y
Usui et al. (15)	46	37	13	UK	Y	N	N	Y	Y	Y	Y	N	N	N
Dai et al. (14)	–	UK	UK	UK	Y	N	Y	Y	Y	Y	Y	Y	Y	Y
Li et al. (29)	–	UK	UK	UK	Y	Y	Y	Y	Y	Y	Y	N	N	N
Kimura et al. (30)	28	56	17	UK	Y	Y	N	Y	Y	Y	Y	Y	Y	N

LAD, left anterior descending artery; RCA, right coronary artery; LCX, left circumflex artery; TCFA, thin-cap fibroatheroma; MLA, minimal lumen area; RLA, reference lumen area; AS, area stenosis; OCT, optical coherence tomography; N, No; Y, yes; UK, unknown.

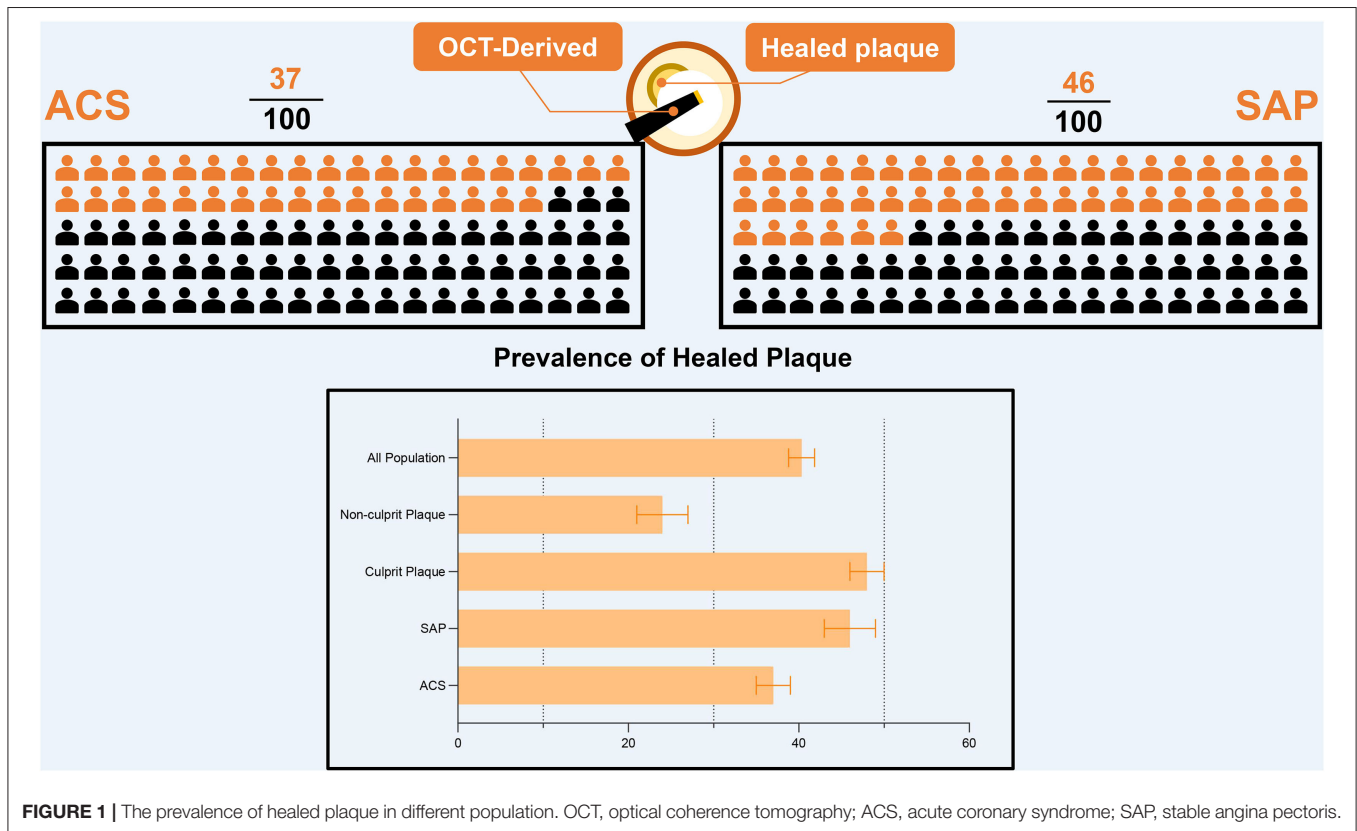


FIGURE 1 | The prevalence of healed plaque in different population. OCT, optical coherence tomography; ACS, acute coronary syndrome; SAP, stable angina pectoris.

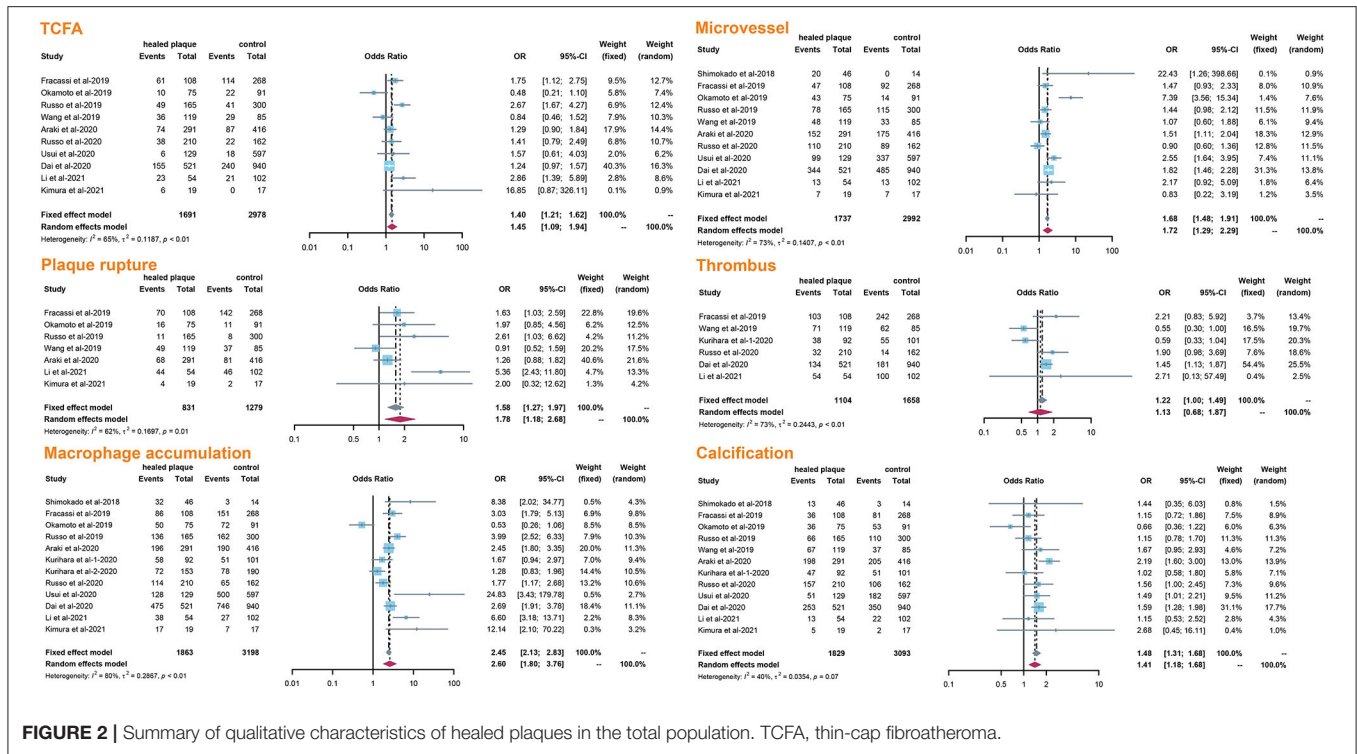


FIGURE 2 | Summary of qualitative characteristics of healed plaques in the total population. TCFA, thin-cap fibroatheroma.

healed-plaque rupture ($P = 0.033$), and gender (%male) was associated with heterogeneity in macrophage accumulation ($P = 0.047$) (Table 4, Figures 4, 5). Regarding the microvessel, the meta-regression analysis showed that the difference in the mean level of LDL-C was associated with heterogeneity among SAP patients ($P = 0.034$) (Table 5). However, the calcification, TCFA, and thrombus were not affected by the clinical factors ($P > 0.05$).

Publication Bias

The results of the funnel plot for characteristics of healed plaque are shown in Figure 6, and the results of Egger test for prevalence of healed plaque are shown in Supplementary Table 6. In addition, Egger test checking for the existence of publication bias, as described in earlier studies, was performed for every characteristic of the healed plaque (Supplementary Table 7). There was no publication bias in the characteristics of healed plaque according to the funnel plot, and Egger's test did not show any publication bias in the single-arm meta-analysis.

DISCUSSION

To our knowledge, this is the first meta-analysis to evaluate OCT-based prevalence, describe the morphology, and explore the influencing factors of healed plaques. Our main findings were as follows: (1) The incidence of healed plaques in the overall population was 40%, with a higher incidence in SAP subgroup and at culprit sites. (2) Higher vascular fragility was reflected in higher incidence of TCFA and macrophage accumulation in healed plaques; the burden of healed plaques

was heavier in patients with culprit plaques and ACS, as reflected in higher AS and longer lesion length. (3) Traditional cardiovascular risk factors including smoking, gender, and levels of LDL-C were associated with the characteristics of healed plaques.

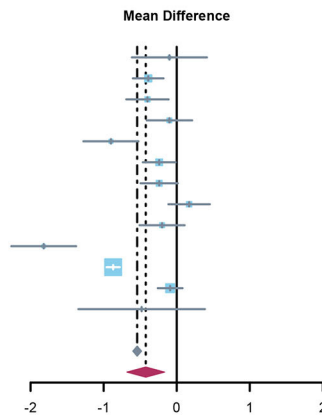
According to our analysis, the incidence of healed plaques was different between ACS and SAP subgroups. While Shimokado et al. reported that OCT detected healed plaques in 77% of SAP patients' target lesions (22), Okamoto et al. observed layered heterogeneous plaques in 36.6% of SAP patients with pathogenic lesions (23). In contrast, Fracassi et al. found that one-third of the lesions in ACS patients had multilayer structures with complicated angiography (8). According to our results, there was a higher incidence of healed plaques in SAP patients (46%) than in ACS patients (37%). Additionally, our results indicated that the prevalence of healed plaques was higher in culprit plaques (48%) than in non-culprit plaques (24%). As previously described, although non-culprit lesions associated with culprit events are more likely to approach 70% or more of plaque burden, and patients with non-culprit plaque rupture have a high-risk atherosclerosis phenotype of the whole coronary artery (31, 32), healed culprit plaque in patients has a more layered and a more lipid plaque phenotype with more characteristics of plaque vulnerability (24, 25, 28). However, based on the previous studies mentioned above, more OCT-based studies are needed to clarify the characteristics of healed plaques combined with non-culprit plaques with or without the pursuant culprit lesions.

Cracked plaques are characterized by a thin fibrous cap, a large lipid-filled necrosis core, and persistent inflammation (33). The thickness of fibrous cap is an important morphological feature

MLA

Study	healed plaque			control		
	Total	Mean	SD	Total	Mean	SD
Shimokado et al-2018	46	1.50	0.7000	14	1.60	0.9000
Fracassi et al-2019	108	1.45	0.8700	268	1.84	1.0900
Okamoto et al-2019	75	1.50	0.9000	91	1.90	1.0000
Russo et al-2019	165	3.00	1.6000	300	3.10	1.7000
Wang et al-2019	119	1.40	0.9000	85	2.30	1.6000
Araki et al-2020	291	2.29	1.4200	416	2.53	1.5900
Kurihara et al-1-2020	92	1.47	0.8300	101	1.71	0.9700
Kurihara et al-2-2020	153	2.06	1.2500	190	1.89	1.4200
Russo et al-2020	210	2.60	1.2000	162	2.80	1.7000
Usui et al-2020	129	3.61	1.8300	597	5.43	3.8700
Dai et al-2020	521	3.00	0.7800	940	3.87	0.9200
Li et al-2021	54	1.47	0.4200	102	1.56	0.6500
Kimura et al-2021	19	1.23	0.7900	17	1.71	1.6600

Fixed effect model 1982 3283
 Random effects model
 Heterogeneity: $I^2 = 93\%$, $\tau^2 = 0.1915$, $p < 0.01$

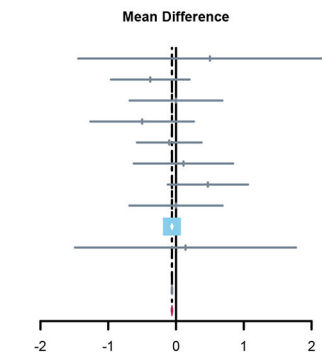


MD	95%-CI	Weight (fixed)	Weight (random)
-0.10	[-0.61; 0.41]	1.3%	6.6%
-0.39	[-0.60; -0.18]	8.1%	8.4%
-0.40	[-0.69; -0.11]	4.2%	8.0%
-0.10	[-0.41; 0.21]	3.7%	7.9%
-0.90	[-1.28; -0.52]	2.5%	7.5%
-0.24	[-0.46; -0.02]	7.1%	8.4%
-0.24	[-0.49; 0.01]	5.5%	8.2%
0.17	[-0.11; 0.45]	4.4%	8.1%
-0.20	[-0.51; 0.11]	3.7%	7.9%
-1.82	[-2.26; -1.38]	1.8%	7.1%
-0.87	[-0.96; -0.78]	44.7%	8.8%
-0.09	[-0.26; 0.08]	12.5%	8.6%
-0.48	[-1.35; 0.39]	0.5%	4.4%
-0.54	[-0.60; -0.48]	100.0%	--
-0.42	[-0.68; -0.17]	--	100.0%

RLA

Study	healed plaque			control		
	Total	Mean	SD	Total	Mean	SD
Shimokado et al-2018	46	7.70	3.4000	14	7.20	3.2000
Fracassi et al-2019	108	7.10	2.5600	268	7.48	2.6800
Russo et al-2019	165	7.80	3.6000	300	7.80	3.6000
Wang et al-2019	119	7.10	2.8000	85	7.60	2.7000
Araki et al-2020	291	7.59	2.9600	416	7.69	3.4800
Kurihara et al-1-2020	92	7.34	2.6600	101	7.23	2.5200
Kurihara et al-2-2020	153	7.21	2.7400	190	6.74	2.8400
Russo et al-2020	210	8.30	3.0000	162	8.30	3.6000
Dai et al-2020	521	3.11	0.1200	940	3.17	0.1100
Kimura et al-2021	19	6.22	2.1800	17	6.08	2.7400

Fixed effect model 1724 2493
 Random effects model
 Heterogeneity: $I^2 = 0\%$, $\tau^2 = 0$, $p = 0.72$

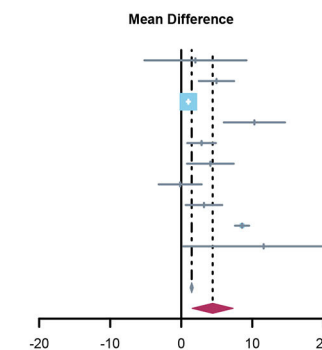


MD	95%-CI	Weight (fixed)	Weight (random)
0.50	[-1.44; 2.44]	0.0%	0.0%
-0.38	[-0.96; 0.20]	0.0%	0.0%
0.00	[-0.68; 0.68]	0.0%	0.0%
-0.50	[-1.26; 0.26]	0.0%	0.0%
-0.10	[-0.58; 0.38]	0.1%	0.1%
0.11	[-0.62; 0.84]	0.0%	0.0%
0.47	[-0.12; 1.06]	0.0%	0.0%
0.00	[-0.69; 0.69]	0.0%	0.0%
-0.06	[-0.07; -0.05]	99.7%	99.7%
0.14	[-1.49; 1.77]	0.0%	0.0%
-0.06	[-0.07; -0.05]	100.0%	--
-0.06	[-0.07; -0.05]	--	100.0%

AS

Study	healed plaque			control		
	Total	Mean	SD	Total	Mean	SD
Shimokado et al-2018	46	79.00	12.0000	14	77.00	12.0000
Fracassi et al-2019	108	79.23	9.4900	268	74.27	14.3200
Russo et al-2019	165	61.20	1.2000	300	60.20	1.2000
Wang et al-2019	119	79.00	11.6000	85	68.70	17.7000
Araki et al-2020	291	69.54	13.3000	416	66.68	13.6100
Kurihara et al-1-2020	92	79.50	9.7000	101	75.40	13.4000
Kurihara et al-2-2020	153	71.27	12.8800	190	71.42	15.6300
Russo et al-2020	210	68.50	13.2000	162	65.30	11.9000
Dai et al-2020	521	62.10	8.5600	940	53.54	10.3400
Kimura et al-2021	19	79.60	10.6000	17	68.00	21.6000

Fixed effect model 1724 2493
 Random effects model
 Heterogeneity: $I^2 = 96\%$, $\tau^2 = 17.6825$, $p < 0.01$

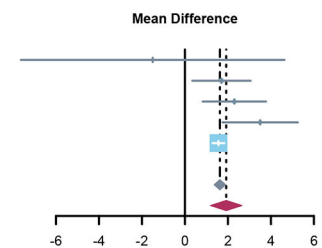


MD	95%-CI	Weight (fixed)	Weight (random)
2.00	[-5.18; 9.18]	0.1%	6.9%
4.96	[2.48; 7.44]	0.8%	11.2%
1.00	[0.77; 1.23]	91.1%	12.2%
10.30	[6.00; 14.60]	0.3%	9.6%
2.86	[0.85; 4.87]	1.2%	11.5%
4.10	[0.82; 7.38]	0.4%	10.5%
-0.15	[-3.17; 2.87]	0.5%	10.7%
3.20	[0.64; 5.76]	0.7%	11.1%
8.56	[7.57; 9.55]	4.8%	12.0%
11.60	[0.28; 22.92]	0.0%	4.2%
1.47	[1.25; 1.69]	100.0%	--
4.42	[1.54; 7.30]	--	100.0%

Lesion length

Study	healed plaque			control		
	Total	Mean	SD	Total	Mean	SD
Shimokado et al-2018	46	23.40	11.0000	14	24.90	10.0000
Russo et al-2019	165	16.70	7.1000	300	15.00	7.2000
Wang et al-2019	119	16.20	6.0000	85	13.90	4.7000
Russo et al-2020	210	19.30	9.5000	162	15.80	7.7000
Dai et al-2020	521	14.38	2.5200	940	12.82	2.6400

Fixed effect model 1061 1501
 Random effects model
 Heterogeneity: $I^2 = 38\%$, $\tau^2 = 0.2503$, $p = 0.17$



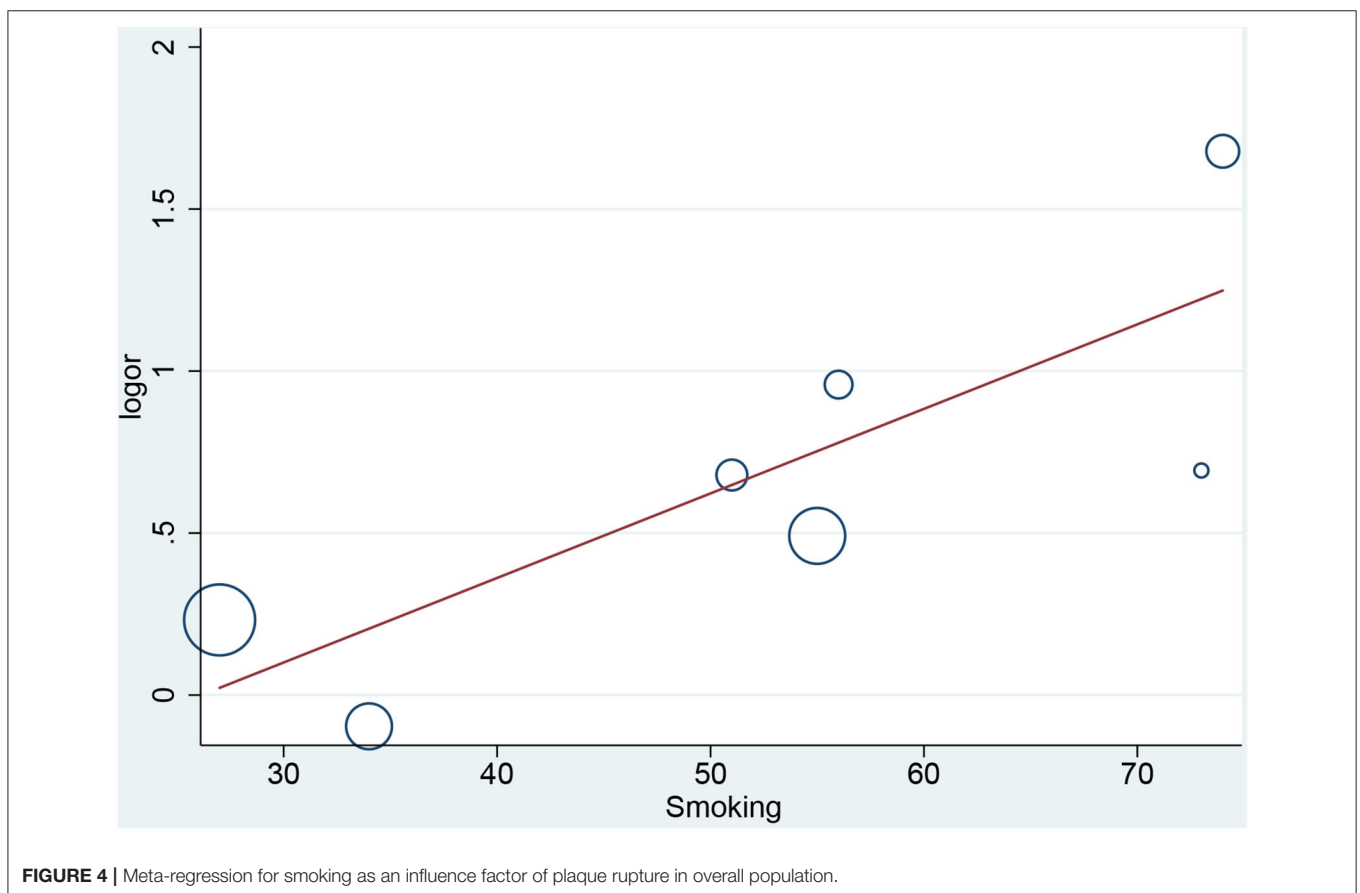
MD	95%-CI	Weight (fixed)	Weight (random)
-1.50	[-7.63; 4.63]	0.2%	1.4%
1.70	[0.34; 3.06]	3.7%	18.6%
2.30	[0.83; 3.77]	3.2%	16.7%
3.50	[1.75; 5.25]	2.2%	13.0%
1.56	[1.29; 1.83]	90.7%	50.3%
1.63	[1.37; 1.89]	100.0%	--
1.92	[1.20; 2.64]	--	100.0%

FIGURE 3 | Summary of quantitative characteristics of healed plaques in the total population. MLA, minimal lumen area; RLA, reference lumen area; AS, area stenosis.

TABLE 4 | Meta-regression of influence factors for plaque rupture and macrophage accumulation in healed plaque among overall population.

	Plaque rupture				Macrophage accumulation			
	Point estimate	Lower limit	Upper limit	P-value	Point estimate	Lower limit	Upper limit	P-value
Age	-0.024	-0.157	0.109	0.660	-0.016	-0.158	0.125	0.802
Male	0.011	-0.213	0.234	0.908	0.184	0.003	0.366	0.047
Hypertension	-0.017	-0.082	0.048	0.525	-0.015	-0.062	0.031	0.482
Diabetes	0.007	-0.067	0.080	0.827	0.021	-0.044	0.086	0.486
Hyperlipidemia	0.004	-0.032	0.041	0.782	-0.006	-0.046	0.034	0.739
Smoking	0.026	0.003	0.049	0.033	0.022	-0.008	0.053	0.133
TCFA	-0.979	-7.571	5.613	0.718	-1.441	-9.349	6.466	0.679
LDL-C	0.046	-0.338	0.126	0.199	0.023	-0.041	0.088	0.440
Statin therapy	-	-	-	-	0.992	0.979	1.004	0.159

LDL-C, low-density lipoprotein cholesterol.

**FIGURE 4** | Meta-regression for smoking as an influence factor of plaque rupture in overall population.

to distinguish a ruptured plaque (34); indeed, it is universally acknowledged that plaque rupture occurs on a background of TCFA, displaying more features of plaque vulnerability, which is the most common mechanism of intracavitary thrombosis in coronary arteries (29, 30, 35, 36). In our study, the incidence of TCFA in healed plaques was significantly higher only in the ACS group. Therefore, while TCFA in healed plaques may not be strongly associated with plaque type, it seems to be closely related to acute events such as ACS. However, the heterogeneity

could not be explained by TCFA either in subgroup analysis or in meta-regression. Interestingly, smoking might be associated with heterogeneity in healed plaque rupture. We supposed that, as a common cardiovascular risk factor, smoking might influence the stability of healed plaque and then lead to crack.

Macrophage accumulation was measured in 92.3% of the included studies, and it showed significant differences between healed plaque and non-healed plaque in the whole population, SAP group, and in culprit plaques. There is certain evidence that

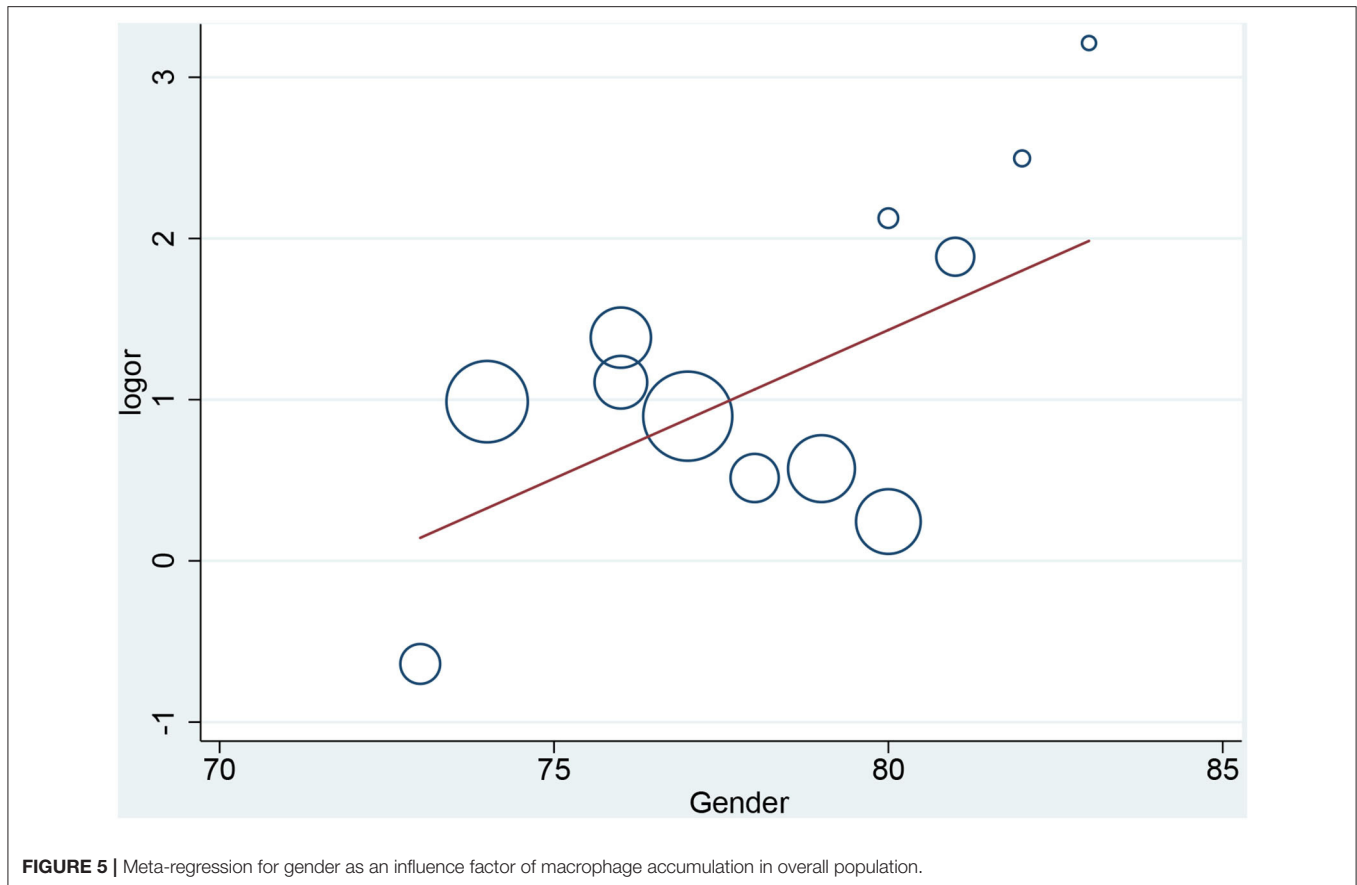


TABLE 5 | Meta-regression of influence factors for microvessel in healed plaque among SAP patients.

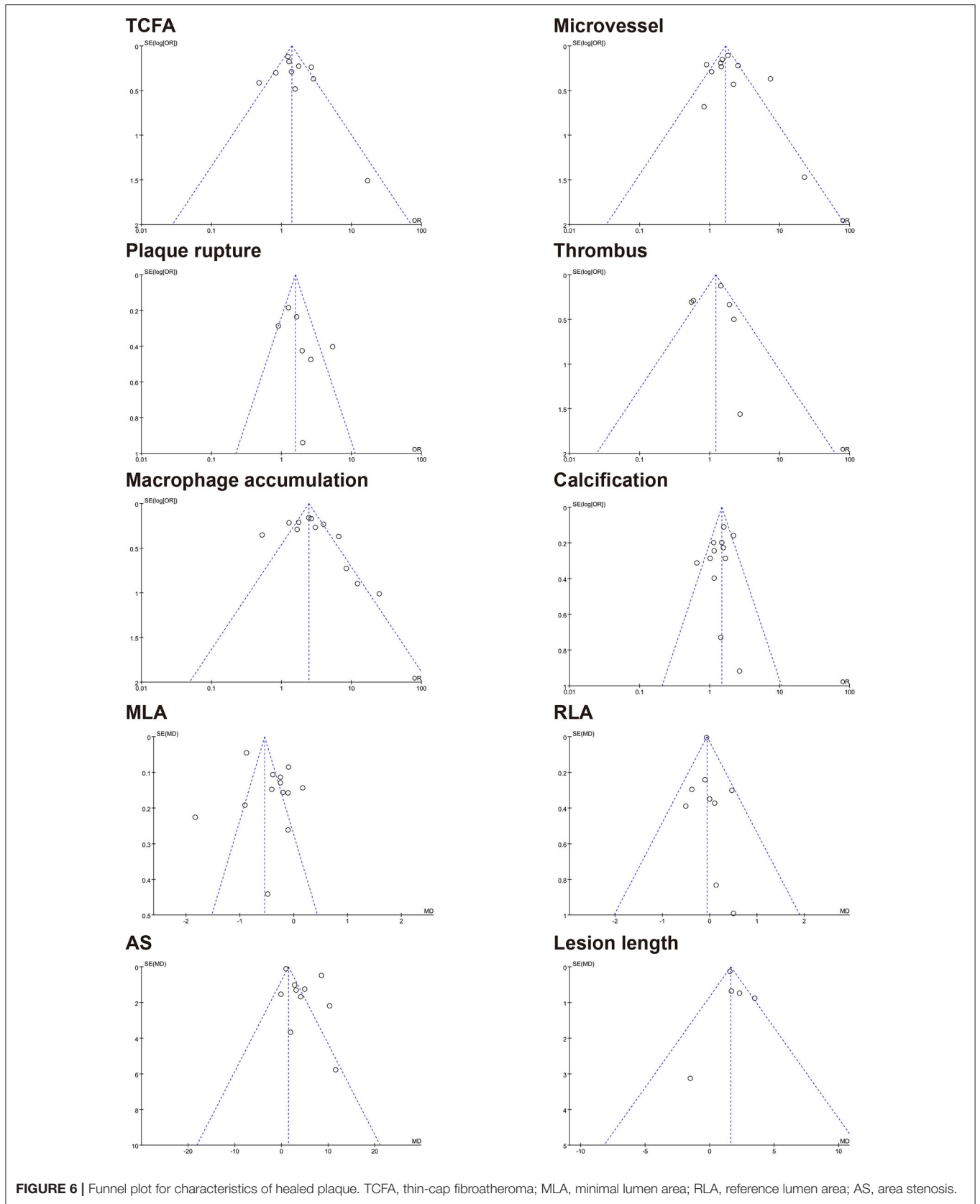
	Point estimate	Lower limit	Upper limit	P-value
Age	0.369	-1.085	1.823	0.389
Male	-0.207	-1.088	0.674	0.419
Hypertension	0.086	-0.088	0.259	0.168
Diabetes	0.009	-0.307	0.325	0.910
Hyperlipidemia	0.466	-0.116	1.048	0.075
Smoking	0.012	-0.181	0.206	0.808
LDL-C	0.227	0.043	0.411	0.034

LDL-C, low-density lipoprotein cholesterol.

macrophages are a driving force in all stages of atherogenesis, from the earliest lesions to the formation of complex plaques (37); moreover, the available evidence suggests that increased multifocal and focal macrophage density highly correlates with the severity of CAD symptoms (38). The infiltration of healed plaques by macrophages might indicate the level of inflammatory response, suggesting that there might be a higher degree of inflammatory response in healed plaques. Moreover, the gender differences might account for the heterogeneity in macrophage accumulation.

In the ACS and SAP subgroup analysis related to microvessel, higher heterogeneity was found in the SAP group. The mean level of LDL-C was related to heterogeneity in microvessel among SAP patients in meta-regression. On the basis of the microvessel formation, inward growth is a common feature during thrombus organization, and it is more common in healed plaques (3). Importantly, the membranes of microvessels can be used as a source of free cholesterol in plaques, and in this way, the number of microvessels increases with the development of fatty plaques (4). The abovementioned mechanism might explain the relationship between mean LDL-C and microvessels in healed plaques. However, microvessels may also play a role at the cellular and molecular levels, which deserves further studies.

In the clinical therapeutic interventions, Kurihara et al. found that stents had limited dilation and more eccentric lumens in non-healed plaques after PCI in patients with ACS compared with healed plaques. Afterward, they found that the presence of healed plaques in culprit vessels was an independent predictor of revascularization rate during a 2-year follow-up (26, 27). In the early days, the complex characteristics of TCFA and microvessels as determined by OCT seemed to be potential predictors of subsequent progression of coronary plaque in patients with CAD (39). In a recent study by Prati et al., OCT-defined high-risk plaque based on MLA, thickness of fibrous cap, and content of macrophages were shown to be



independent predictors at the 1-year follow-up (40). Similarly, the detection of healed plaques and their characteristics may help in identifying patients who are relatively immune to acute occlusion during periods of plaque instability, thereby further helping to stratify the risk and potentially contribute to treatment (41).

Strengths and Limitations of This Study

Our study obtained novel results by including the recent studies and correct data. Besides, we conducted subgroup and meta-regression analyses to explore the relationship between the characteristics of healed plaque and important clinical variables; meanwhile, we have listed the OCT images of the healed plaque and atherosclerotic patterns in **Supplementary Figure 6**. However, there are some potential limitations to our analysis that should be considered when interpreting the findings. First, owing to the limited number of cohort or case-control studies on healed plaques and the possibility that certain unpublished articles and data might have been overlooked, 13 studies were finally included in this meta-analysis. Second, the OCT-related images in the included studies may have been affected by human judgment that introduced a degree of heterogeneity into the analysis. Third, owing to the inadequate numbers of trials, the funnel plots shown in this study might not precisely reflect the publication bias, which could be corrected by including additional randomized controlled trials in the future. Fourth, considering that plaque healing is regarded as a sign of past plaque instability, it might be that deep macrophage strokes or other variables caused an intraplaque change in signal intensity. Consistently, it is rather uneasy to address the presence of the microvessels. Finally, in addition to the possible sources of heterogeneity mentioned above, other factors such as medication could have also led to heterogeneity.

REFERENCES

- Virmani R, Kolodgie FD, Burke AP, Farb A, Schwartz SM. Lessons from sudden coronary death: a comprehensive morphological classification scheme for atherosclerotic lesions. *Arterioscler Thromb Vasc Biol.* (2000) 20:1262–75. doi: 10.1161/01.ATV.20.5.1262
- Otsuka F, Joner M, Prati F, Virmani R, Narula J. Clinical classification of plaque morphology in coronary disease. *Nat Rev Cardiol.* (2014) 11:379–89. doi: 10.1038/nrcardio.2014.62
- Mann J, Davies MJ. Mechanisms of progression in native coronary artery disease: role of healed plaque disruption. *Heart.* (1999) 82:265–8. doi: 10.1136/hrt.82.3.265
- Burke AP, Kolodgie FD, Farb A, Weber DK, Malcom GT, Smialek J, et al. Healed plaque ruptures and sudden coronary death: evidence that subclinical rupture has a role in plaque progression. *Circulation.* (2001) 103:934–40. doi: 10.1161/01.CIR.103.7.934
- Ueda Y, Asakura M, Yamaguchi O, Hirayama A, Hori M, Kodama K. The healing process of infarct-related plaques. Insights from 18 months of serial angioscopic follow-up. *J Am Coll Cardiol.* (2001) 38:1916–22. doi: 10.1016/S0735-1097(01)01673-4
- Okada K, Ueda Y, Matsuo K, Nishio M, Hirata A, Kashiwase K, et al. Frequency and healing of nonculprit coronary artery plaque disruptions in patients with acute myocardial infarction. *Am J Cardiol.* (2011) 107:1426–9. doi: 10.1016/j.amjcard.2011.01.016
- Brezinski M, Willard F, Rupnick M. Inadequate intimal angiogenesis as a source of coronary plaque instability: implications for healing. *Circulation.* (2019) 140:1857–9. doi: 10.1161/CIRCULATIONAHA.119.042192
- Fracassi F, Crea F, Sugiyama T, Yamamoto E, Uemura S, Vergallo R, et al. Healed culprit plaques in patients with acute coronary syndromes. *J Am Coll Cardiol.* (2019) 73:2253–63. doi: 10.1016/j.jacc.2018.10.093
- Tearney GJ, Yabushita H, Houser SL, Aretz HT, Jang IK, Schendorf KH, et al. Quantification of macrophage content in atherosclerotic plaques by optical coherence tomography. *Circulation.* (2003) 107:113–9. doi: 10.1161/01.CIR.0000044384.41037.43
- Vergallo R, Crea F. Atherosclerotic plaque healing. *N Engl J Med.* (2020) 383:846–57. doi: 10.1056/NEJMra2000317
- Araki M, Yonetsu T, Kurihara O, Nakajima A, Lee H, Soeda T, et al. Predictors of rapid plaque progression: an optical coherence tomography study. *JACC Cardiovasc Imaging.* (2021) 14:1628–38. doi: 10.1016/j.jcmg.2020.08.014
- Stroup DF, Berlin JA, Morton SC, Olkin I, Williamson GD, Rennie D, et al. Meta-analysis of observational studies in epidemiology: a proposal for reporting. Meta-analysis Of Observational Studies in Epidemiology (MOOSE) group. *JAMA.* (2000) 283:2008–12. doi: 10.1001/jama.283.15.2008
- Moher D, Shamseer L, Clarke M, Ghersi D, Liberati A, Petticrew M, et al. Preferred Reporting Items for Systematic Review and Meta-Analysis Protocols (PRISMA-P) 2015 statement. *Syst Rev.* (2015) 4:1. doi: 10.1186/2046-4053-4-1
- Dai J, Fang C, Zhang S, Li L, Wang Y, Xing L, et al. Frequency, predictors, distribution, and morphological characteristics of layered culprit and nonculprit plaques of patients with acute myocardial infarction: *in vivo*

DATA AVAILABILITY STATEMENT

The original contributions presented in the study are included in the article/**Supplementary Material**, further inquiries can be directed to the corresponding author/s.

AUTHOR CONTRIBUTIONS

XF, QG, and YZ developed the initial idea of this study. XF and QG conducted a comprehensive search of three databases and took responsibility for selecting the study and extracting data. XF analyzed the data and drafted the article. QG and YZ carefully examined this manuscript. All authors agreed with the ideas presented in the article and have made their contributions to research design, interpretation of results, and ideas for writing articles.

FUNDING

This study was supported by grants from National Key Research and Development Program of China (2017YFC0908800), Beijing Municipal Health Commission (Grant Nos. PXM2020_026272_000002 and PXM2020_026272_000014), and Natural Science Foundation of Beijing, China (Grant No. 7212027) to YZ. QG was supported by Natural Science Foundation of Beijing, China (Grant No. 7214223).

SUPPLEMENTARY MATERIAL

The Supplementary Material for this article can be found online at: <https://www.frontiersin.org/articles/10.3389/fcvm.2021.761208/full#supplementary-material>

- 3-vessel optical coherence tomography study. *Circ Cardiovasc Interv.* (2020) 13:e009125. doi: 10.1161/CIRCINTERVENTIONS.120.009125
15. Usui E, Mintz GS, Lee T, Matsumura M, Zhang Y, Hada M, et al. Prognostic impact of healed coronary plaque in non-culprit lesions assessed by optical coherence tomography. *Atherosclerosis.* (2020) 309:1–7. doi: 10.1016/j.atherosclerosis.2020.07.005
 16. Wang C, Hu S, Wu J, Yu H, Pan W, Qin Y, et al. Characteristics and significance of healed plaques in patients with acute coronary syndrome and stable angina: an *in vivo* OCT and IVUS study. *Eurointervention.* (2019) 15:e771–8. doi: 10.4244/EIJ-D-18-01175
 17. Iannaccone M, Quadri G, Taha S, D'Ascenzo F, Montefusco A, Omede' P, et al. Prevalence and predictors of culprit plaque rupture at OCT in patients with coronary artery disease: a meta-analysis. *Eur Heart J Cardiovasc Imaging.* (2016) 17:1128–37. doi: 10.1093/ehjci/jev283
 18. Zhang J, Ko CW, Nie L, Chen Y, Tiwari R. Bayesian hierarchical methods for meta-analysis combining randomized-controlled and single-arm studies. *Stat Methods Med Res.* (2019) 28:1293–310. doi: 10.1177/0962280218754928
 19. Hou K, Yu Z, Jia Y, Fang H, Shao S, Huang L, et al. Efficacy and safety of ibrutinib in diffuse large B-cell lymphoma: a single-arm meta-analysis. *Crit Rev Oncol Hematol.* (2020) 152:103010. doi: 10.1016/j.critrevonc.2020.103010
 20. Marston NA, Giugliano RP, Im K, Silverman MG, O'Donoghue ML, Wiviott SD, et al. Association between triglyceride lowering and reduction of cardiovascular risk across multiple lipid-lowering therapeutic classes: a systematic review and meta-regression analysis of randomized controlled trials. *Circulation.* (2019) 140:1308–17. doi: 10.1161/CIRCULATIONAHA.119.041998
 21. Song F, Gilbody S. Bias in meta-analysis detected by a simple, graphical test. Increase in studies of publication bias coincided with increasing use of meta-analysis. *BMJ.* (1998) 316:471.
 22. Shimokado A, Matsuo Y, Kubo T, Nishiguchi T, Taruya A, Teraguchi I, et al. *In vivo* optical coherence tomography imaging and histopathology of healed coronary plaques. *Atherosclerosis.* (2018) 275:35–42. doi: 10.1016/j.atherosclerosis.2018.05.025
 23. Okamoto H, Kume T, Yamada R, Koyama T, Tamada T, Imai K, et al. Prevalence and clinical significance of layered plaque in patients with stable angina pectoris- evaluation with histopathology and optical coherence tomography. *Circ J.* (2019) 83:2452–9. doi: 10.1253/circj.CJ-19-0640
 24. Russo M, Kim HO, Kurihara O, Araki M, Shinohara H, Thondapu V, et al. Characteristics of non-culprit plaques in acute coronary syndrome patients with layered culprit plaque. *Eur Heart J Cardiovasc Imaging.* (2020) 21:1421–30. doi: 10.1093/ehjci/jez308
 25. Araki M, Yonetsu T, Russo M, Kurihara O, Kim HO, Shinohara H, et al. Predictors for layered coronary plaques: an optical coherence tomography study. *J Thromb Thrombol.* (2020) 50:886–894. doi: 10.1007/s11239-020-02116-5
 26. Kurihara O, Shinohara H, Kim HO, Russo M, Araki M, Nakajima A, et al. Comparison of post-stent optical coherence tomography findings: Layered versus non-layered culprit lesions. *Catheter Cardiovasc Interv.* (2021) 97:1320–8. doi: 10.1002/ccd.28940
 27. Kurihara O, Russo M, Kim HO, Araki M, Shinohara H, Lee H, et al. Clinical significance of healed plaque detected by optical coherence tomography: a 2-year follow-up study. *J Thromb Thrombol.* (2020) 50:895–902. doi: 10.1007/s11239-020-02076-w
 28. Russo M, Fracassi F, Kurihara O, Kim HO, Thondapu V, Araki M, et al. Healed plaques in patients with stable angina pectoris. *Arterioscler Thromb Vasc Biol.* (2020) 40:1587–97. doi: 10.1161/ATVBAHA.120.314298
 29. Li J, Sheng Z, Tan Y, Zhou P, Liu C, Zhao H, et al. Association of plasma trimethylamine N-Oxide level with healed culprit plaques examined by optical coherence tomography in patients with ST-Segment elevation myocardial infarction. *Nutr Metab Cardiovasc Dis.* (2021) 31:145–52. doi: 10.1016/j.numecd.2020.06.016
 30. Kimura S, Cho S, Misu Y, Ohmori M, Tateishi R, Kaneda T, et al. Optical coherence tomography and coronary angiography assessment of healed coronary plaque components. *Int J Cardiovasc Imaging.* (2021) 37:2849–59. doi: 10.1007/s10554-021-02287-z
 31. Vergallo R, Uemura S, Soeda T, Minami Y, Cho JM, Ong DS, et al. Prevalence and predictors of multiple coronary plaque ruptures: *in vivo* 3-vessel optical coherence tomography imaging study. *Arterioscler Thromb Vasc Biol.* (2016) 36:2229–38. doi: 10.1161/ATVBAHA.116.307891
 32. Stone GW, Maehara A, Lansky AJ, de Bruyne B, Cristea E, Mintz GS, et al. A prospective natural-history study of coronary atherosclerosis. *N Engl J Med.* (2011) 364:226–35. doi: 10.1056/NEJMoa1002358
 33. Gisterà A, Hansson GK. The immunology of atherosclerosis. *Nat Rev Nephrol.* (2017) 13:368–80. doi: 10.1038/nrneph.2017.51
 34. Tian J, Ren X, Vergallo R, Xing L, Yu H, Jia H, et al. Distinct morphological features of ruptured culprit plaque for acute coronary events compared to those with silent rupture and thin-cap fibroatheroma: a combined optical coherence tomography and intravascular ultrasound study. *J Am Coll Cardiol.* (2014) 63:2209–16. doi: 10.1016/j.jacc.2014.01.061
 35. Sugiyama T, Yamamoto E, Bryniarski K, Xing L, Lee H, Isobe M, et al. Nonculprit plaque characteristics in patients with acute coronary syndrome caused by plaque erosion vs plaque rupture: a 3-vessel optical coherence tomography study. *JAMA Cardiol.* (2018) 3:207–14. doi: 10.1001/jamacardio.2017.5234
 36. Tian J, Dauerman H, Toma C, Samady H, Itoh T, Kuramitsu S, et al. Prevalence and characteristics of TCFA and degree of coronary artery stenosis: an OCT, IVUS, and angiographic study. *J Am Coll Cardiol.* (2014) 64:672–80. doi: 10.1016/j.jacc.2014.05.052
 37. Cao DJ. Macrophages in cardiovascular homeostasis and disease. *Circulation.* (2018) 138:2452–5. doi: 10.1161/CIRCULATIONAHA.118.035736
 38. MacNeill BD, Jang IK, Bouma BE, Iftimia N, Takano M, Yabushita H, et al. Focal and multi-focal plaque macrophage distributions in patients with acute and stable presentations of coronary artery disease. *J Am Coll Cardiol.* (2004) 44:972–9. doi: 10.1016/j.jacc.2004.05.066
 39. Uemura S, Ishigami K, Soeda T, Okayama S, Sung JH, Nakagawa H, et al. Thin-cap fibroatheroma and microchannel findings in optical coherence tomography correlate with subsequent progression of coronary atheromatous plaques. *Eur Heart J.* (2012) 33:78–85. doi: 10.1093/eurheartj/ehz284
 40. Prati F, Romagnoli E, Gatto L, La Manna A, Burzotta F, Ozaki Y, et al. Relationship between coronary plaque morphology of the left anterior descending artery and 12 months clinical outcome: the CLIMA study. *Eur Heart J.* (2020) 41:383–91. doi: 10.1093/eurheartj/ehz520
 41. Vergallo R, Porto I, D'Amario D, Annibali G, Galli M, Benenati S, et al. Coronary atherosclerotic phenotype and plaque healing in patients with recurrent acute coronary syndromes compared with patients with long-term clinical stability: an *in vivo* optical coherence tomography study. *JAMA Cardiol.* (2019) 4:321–9. doi: 10.1001/jamacardio.2019.0275

Conflict of Interest: The authors declare that the research was conducted in the absence of any commercial or financial relationships that could be construed as a potential conflict of interest.

Publisher's Note: All claims expressed in this article are solely those of the authors and do not necessarily represent those of their affiliated organizations, or those of the publisher, the editors and the reviewers. Any product that may be evaluated in this article, or claim that may be made by its manufacturer, is not guaranteed or endorsed by the publisher.

Copyright © 2021 Feng, Liu, Yang, Zhai, Zhou and Guo. This is an open-access article distributed under the terms of the Creative Commons Attribution License (CC BY). The use, distribution or reproduction in other forums is permitted, provided the original author(s) and the copyright owner(s) are credited and that the original publication in this journal is cited, in accordance with accepted academic practice. No use, distribution or reproduction is permitted which does not comply with these terms.