



Soluble Urokinase Plasminogen Activator Receptor Is Associated With Subclinical Myocardial Impairment by Speckle Tracking Echocardiography in Lung Cancer Patients

Ahmad S. Manshad¹, Fatima A. Ballout¹, Jeffrey A. Borgia^{2,3}, Jochen Reiser¹ and Tochukwu M. Okwuosa^{4*}

OPEN ACCESS

Edited by:

Jun-ichi Abe,
University of Texas MD Anderson
Cancer Center, United States

Reviewed by:

Christian Cadeddu Dessalvi,
University of Cagliari, Italy
Martino Deidda,
University of Cagliari, Italy

*Correspondence:

Tochukwu M. Okwuosa
tokwuosa@rush.edu

Specialty section:

This article was submitted to
Cardio-Oncology,
a section of the journal
Frontiers in Cardiovascular Medicine

Received: 27 January 2021

Accepted: 06 December 2021

Published: 28 January 2022

Citation:

Manshad AS, Ballout FA, Borgia JA,
Reiser J and Okwuosa TM (2022)
Soluble Urokinase Plasminogen
Activator Receptor Is Associated With
Subclinical Myocardial Impairment by
Speckle Tracking Echocardiography in
Lung Cancer Patients.
Front. Cardiovasc. Med. 8:659524.
doi: 10.3389/fcvm.2021.659524

¹ Department of Internal Medicine, Rush University Medical Center, Chicago, IL, United States, ² Department of Anatomy and Cell Biology, Rush University Medical Center, Chicago, IL, United States, ³ Department of Pathology, Rush University Medical Center, Chicago, IL, United States, ⁴ Division of Cardiology, Rush University Medical Center, Chicago, IL, United States

Background: Plasma cardiac biomarkers have emerged as a cost-effective diagnostic tool aimed at early identification of cardiotoxicity. Soluble urokinase plasminogen activator receptor (suPAR) is a bone marrow cell derived signaling molecule that is associated with cardiovascular disease outcomes.

Objectives: We investigated associations between suPAR and global longitudinal strain (GLS) as a marker of early myocardial impairment in lung cancer patients.

Methods: We retrospectively analyzed 52 patients with stage IV non-small cell lung cancer with normal left ventricular ejection fraction (LVEF >55%) and without known heart disease or end-stage renal disease (ESRD). We studied associations between cardiac biomarkers and echocardiographic measures of systolic and diastolic function. GLS was analyzed using 2D speckle-tracking echocardiography via vendor-independent software (TomTec).

Results: Median plasma suPAR was 7.0 ng/mL (interquartile range: 5.4–9.0). Mean LVEF was $61.9 \pm 8.3\%$ and mean GLS was $-19.3 \pm 2.1\%$. Inter-observer reproducibility was excellent for GLS as determined by Intraclass Correlation Coefficient analysis, ICC = 0.81 (0.68–0.89). After multivariate analysis, suPAR was the only biomarker associated with GLS ($p = 0.009$). suPAR was also associated with diastolic parameters E velocity ($p = 0.018$), A velocity ($p = 0.017$), and E/E' ratio ($p = 0.033$). Interestingly, suPAR was not associated with LVEF ($p = 0.916$). In addition, suPAR and GLS were found to be age-independent predictors of all-cause mortality, though only GLS remained significant after multivariate adjustment.

Conclusions: In this cohort of stage IV non-small cell lung cancer patients with normal LVEF and without known heart disease or ESRD, suPAR was associated with GLS and diastolic impairment. suPAR is a readily available inexpensive biomarker; further research is required to evaluate the possible role of suPAR in screening for subclinical LV dysfunction in the high-risk oncological population.

Keywords: soluble urokinase plasminogen activator receptor (suPAR), myocardial global longitudinal strain, speckle tracking echocardiography, biomarkers, cancer

INTRODUCTION

Current standards for detecting cancer-therapy induced cardiotoxicity are based on assessment of cardiac function by left ventricular ejection fraction (LVEF) using either transthoracic echocardiography (TTE) or radionuclide multigated acquisition (MUGA) (1, 2). However, the assessment of LVEF lacks the sensitivity needed for detecting early subclinical changes. Newer echocardiographic modalities such as speckle tracking echocardiography (STE) enable earlier diagnosis of subclinical cardiac impairment not detected by conventional echocardiography (3).

Strain imaging, particularly global longitudinal strain (GLS) assessment by STE, has been increasingly utilized to risk stratify patients receiving anthracycline-based chemotherapeutic agents due to its superiority in detecting subclinical cardiac dysfunction (4, 5). STE by GLS therefore detects early derangements in cardiac function prior to a detectable fall in LVEF.

Biomarkers have emerged as a new cost-effective diagnostic tool aimed at early identification of patients more prone to developing cardiotoxicity (6). Soluble urokinase plasminogen activator receptor (suPAR) is gaining increasing attention because it is a circulating signaling molecule from the Ly6/neurotoxin family that is strongly predictive of incident and progressive chronic kidney disease and cancer cell progression (7–10). Mechanistically, suPAR activates podocytes on the kidney filtration barrier causing their functional breakdown (11) yet a mechanistic role for suPAR in cardiovascular diseases is not established. As an indicator of cardiovascular health, suPAR outperforms traditional markers of inflammation such as high sensitivity C-reactive protein (hs-CRP) in prognosticating a range of cardiovascular diseases (12, 13). Given the fundamental role of inflammation in cardiovascular disease (CVD), suPAR may aid in risk prediction and prevention of cardiac disease, particularly in the high-risk oncologic population.

Non-small cell lung cancer (NSCLC) accounts for the majority all lung cancers and is currently the leading cause of cancer-related deaths (14). Lung cancer patients are at increased risk of CVD due to direct cardiac toxicity from antineoplastic agents and radiation therapy, as well as shared cardiovascular risk factors (15). As new targeted therapies improve cancer

patient survival, early detection of myocardial dysfunction is of utmost importance.

In the current study, we hypothesize that lung cancer treatment is associated with early/subclinical myocardial impairment as assessed by GLS. We examined the utility of an inexpensive and easily available biomarker (suPAR) in its association with GLS derangements as a marker of subclinical LV dysfunction, in stage IV non-small cell lung cancer patients with normal LVEF and without known heart disease or end-stage renal disease (ESRD).

METHODS

Study Population

We selected patients with stage IV NSCLC that previously failed first-line platinum-based therapy and presented to Rush University Medical Center in Chicago, Illinois between January 2005 and December 2015. Serum and clinical data were collected prospectively by the Rush Biorepository Core (16) with written informed patient consent. The study protocol was reviewed and approved by the Institutional Review Board at RUMC.

From a total of 136 patients with stage IV NSCLC whom had serum suPAR measurements available, we excluded patients with (1) incomplete data, (2) known heart disease and/or ESRD, (3) biplane LVEF < 55%, or (4) poor image quality or arrhythmia at the time of echocardiography (**Figure 1**). A total of 52 patients were included in the current study. ESRD was defined as estimated glomerular filtration rate <15 ml/min, based on Modification of Diet in Renal Disease method (17). Known heart disease was defined as heart failure; coronary artery disease, including previous myocardial infarction, stable angina, previous percutaneous coronary intervention or coronary artery bypass surgery; congenital heart disease; pacemaker or intracardiac defibrillator implantation.

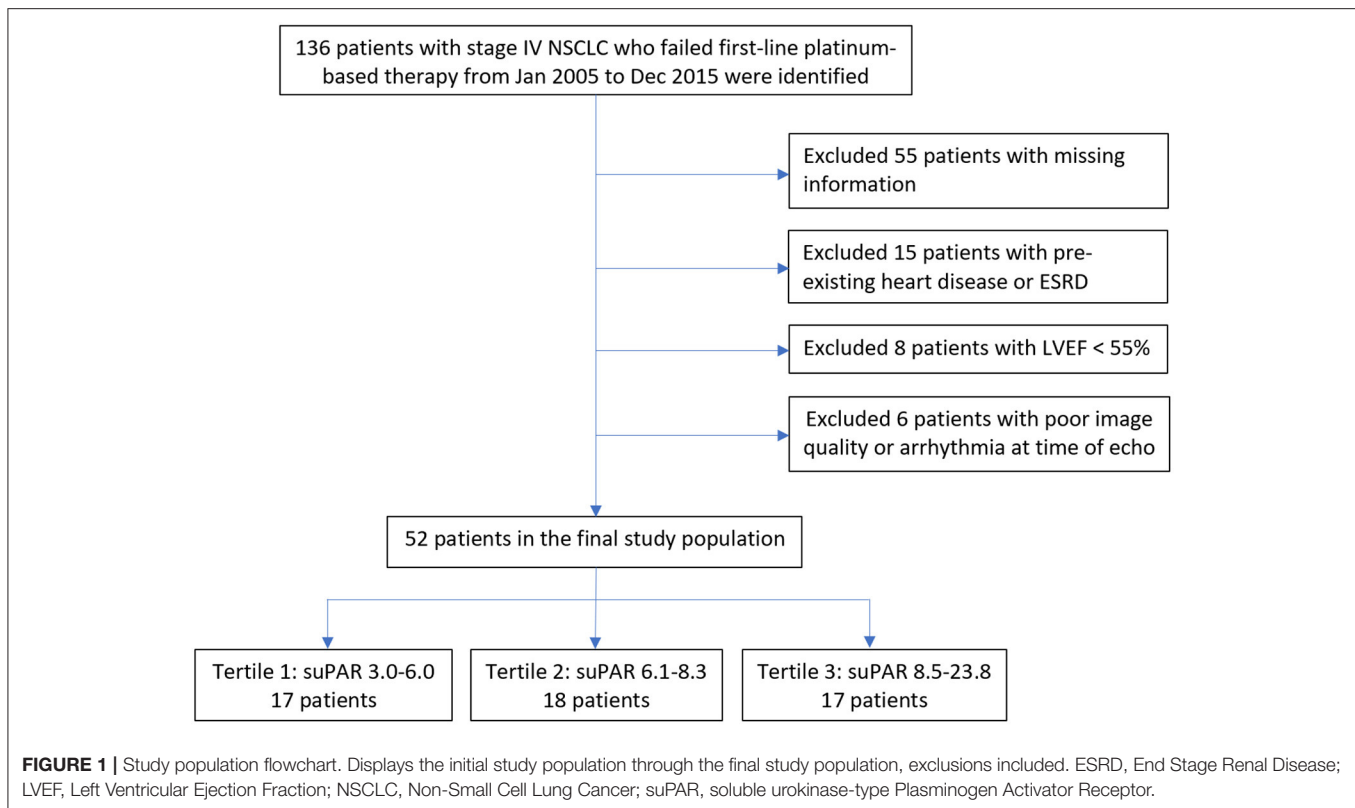
Outcome Measures

The time of observation was calculated from the date of suPAR draw until death or to the date of last follow-up for those still alive. All-cause mortality was obtained from the Social Security Death Index. Survival times were calculated from the date of suPAR draw to the date of death. Cox regression analysis was performed to predict 5-year all-cause mortality.

Conventional Echocardiography

Comprehensive echocardiographic examinations were carried out and analyzed using General Electric, Vivid 7 Dimension

Abbreviations: CVD, cardiovascular disease; GLS, global longitudinal strain; TTE, transthoracic echocardiography; MUGA, radionuclide multigated acquisition; STE, speckle tracking echocardiography; LVEF, left ventricular ejection fraction; suPAR, soluble urokinase plasminogen activator receptor; CRP, C-reactive protein; NSCLC, non-small cell lung cancer; ESRD, end stage renal disease.



imaging system device (GE Vingmed Ultrasound AS, Horten, Norway) with a 3.5 MHz transducer in accordance with the standard recommendations of the American Society of Echocardiography (18). Echocardiography was performed within 90 days of peripheral blood draw. LVEF was measured by biplane Simpson method in apical 4- and 2-chamber views. Three consecutive heart cycles were recorded for each view.

Pulsed-wave Doppler was performed in the apical 4-chamber view to obtain mitral inflow velocities for LV filling pattern evaluation. Peak velocity of early (E) and atrial (A) diastolic filling and deceleration time of E wave (DT) were measured, and the E/A ratio was calculated. Tissue Doppler early diastolic mitral annular velocity (E') was acquired at the lateral annular site and used to calculate E/E' (19, 20). Diastolic function was classified as normal, mild (grade 1, impaired relaxation), moderate (grade 2, pseudonormal), or severe (grade 3, restrictive) (20).

Speckle Tracking Echocardiography

All echocardiographic images were acquired with frame rates of 70–90 frame/s and digitally stored for three cardiac cycles. This method has been described in detail (3) and involves tracking speckles from frame to frame. For the current study, the stored images were retrospectively assessed using 2D STE offline analysis software (2D Cardiac Performance Analysis) developed by TomTec Imaging Systems, GmbH (Munich, Germany). LV GLS was determined by selecting the most representative of the 3 cardiac cycles and marking the endocardium in the standard apical 4-, 2-, and 3- chamber views (Figure 2). Automated

computation was then performed based on the timing of the aortic valve closure. Images were reviewed and analyzed offline by two independent observers blinded to suPAR levels and clinical characteristics of the study population.

Laboratory Analysis

Collection and Storage of Serum Specimens

Peripheral blood was obtained from each patient using standard phlebotomy techniques, with all samples handled and processed in an identical manner, as previously described (21). A portion of each serum sample used for the Luminex evaluations were supplemented with 25 $\mu\text{L}/\text{mL}$ of the Mammalian Protease inhibitor cocktail (Sigma, St. Louis, MO) and 10 $\mu\text{L}/\text{mL}$ of 0.5 M EDTA to minimize further proteolysis. Aliquots were archived in a -80°C freezer until testing. No specimen was subjected to more than two freeze-thaw cycles.

Measurement of Serum Biomarker Concentrations

All specimens were evaluated using the Luminex immunobead platform and commercially-available kits, as previously described (21). All assays were performed according to the manufacturer's recommended protocols. All primary data points were collected on a Luminex FLEXMAP 3D[®] system with concentrations calculated based on 7-point standard curves using a five-parametric fit algorithm in xPONENT[®] v4.0.3 (Luminex Corp., Austin, TX) as previously described (21). sAXL and suPAR levels were measured using the commercially available MILLIPLEX[®] MAP Human Angiogenesis Panel 2 (EMD

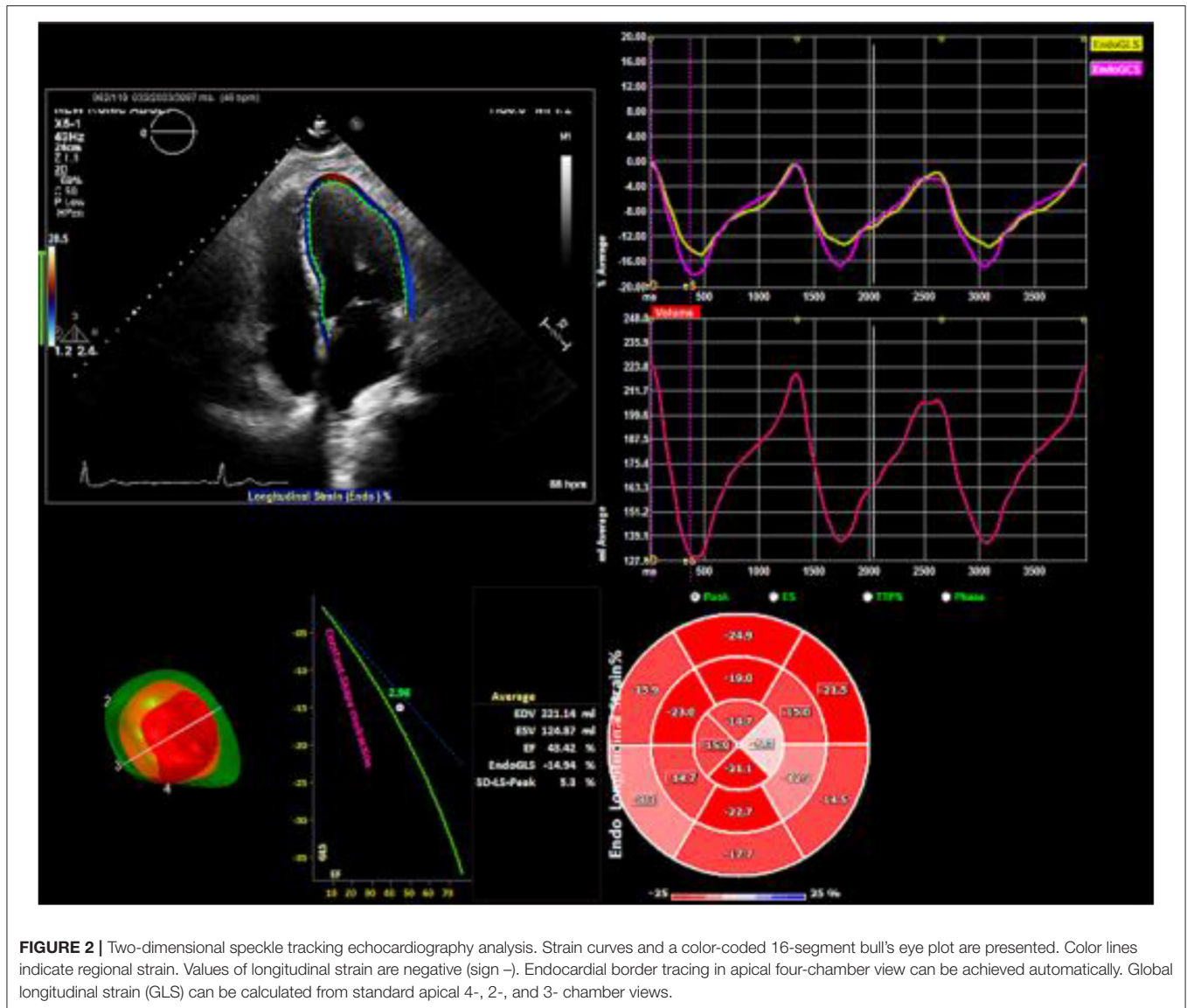


FIGURE 2 | Two-dimensional speckle tracking echocardiography analysis. Strain curves and a color-coded 16-segment bull's eye plot are presented. Color lines indicate regional strain. Values of longitudinal strain are negative (sign -). Endocardial border tracing in apical four-chamber view can be achieved automatically. Global longitudinal strain (GLS) can be calculated from standard apical 4-, 2-, and 3- chamber views.

Millipore Corp., Billerica, MA) for Osteopontin levels. CRP levels were measured using Human Acute Phase 5+4-plex Panel (Bio-Rad Laboratories, Inc., Hercules, CA). Tumor necrosis factor- α (TNF- α) and interleukin-6 (IL-6) levels were measured using MILLIPLEX[®] MAP Human Circulating Cancer Biomarker Panel 1 (EMD Millipore Corp., Billerica, MA). Angiopoietin-2 and Endothelin-1 levels were measured using MILLIPLEX[®] MAP Human Angiogenesis/Growth Factor Panel 1 (EMD Millipore Corp., Billerica, MA). Resistin levels were measured using Human Diabetes 10-plex (Bio-Rad Laboratories, Inc., Hercules, CA). With a few exceptions, the blood samples were drawn within 6 months of cancer diagnosis; after the patients had failed platinum-based therapy.

Statistical Analysis

For each patient the following data was obtained through electronic medical records: patient demographics, cancer history,

cancer therapy, cardiac medication use, cardiac risk factors (e.g., hypertension, diabetes, hyperlipidemia, smoking), and eGFR. Continuous variables were reported as means \pm SD while categorical variables were expressed as numbers or ratios. Between-group comparisons were achieved by 1-way ANOVA for continuous variables while chi-square test was used to evaluate dichotomous variables. Due to the skewed distribution of the biomarker levels, a natural logarithm transformation was performed on all biomarkers. The Pearson correlation coefficient was used to assess the correlation between two variables. A value of $p < 0.05$ was considered to be statistically significant. Reproducibility for LV GLS measurement was assessed by intraclass correlation coefficient (ICC) analysis.

Multivariable linear regression analysis was used to test associations between cardiac biomarkers and echocardiographic parameters. With fixed adjustments for age and sex, the forward stepwise selections approach (probability of 0.05 to enter or leave

the model) was used to identify significant variables associated with systolic echocardiographic parameters (LVEF and GLS) and diastolic parameters (DT, E, A, E/A, E', and E/E'). Variables included in the final model were age, sex, BMI, smoking history, systolic blood pressure, diabetes, serum creatinine, and poorly differentiated histology. Potential risk factors for 5-year all-cause mortality were evaluated using Cox proportional hazards models. The multivariate model included age, gender, and additional variables; with a *p*-value of <0.10 in the univariate Cox analysis. Variables included in the final model were age, gender, diabetes, use of diuretics, and use of beta blockers. All analyses were performed with SPSS version 22 for Windows (SPSS Inc., Chicago, IL, USA). Level of significance was set at *p* < 0.05.

RESULTS

Patient Characteristics

Patient baseline data and echocardiographic parameters are summarized by suPAR tertiles in **Table 1**. The mean age was 62.7 ± 9.4 years, with 27 (52%) females. The median plasma suPAR level was 7.0 (interquartile range: 5.4–9.0). suPAR levels were similar in men and women, and were not associated with age or BMI. Higher suPAR levels were associated with history of smoking, use of diuretics, higher serum creatinine and lower eGFR, CRP, TNF- α , sAXL, and Angiotensin-2. suPAR levels were not found to be associated with cancer duration, poorly differentiated histology, history of surgical resection, performance status, or radiation therapy.

suPAR and Echocardiographic Parameters

The mean LVEF was $61.9 \pm 8.3\%$ and mean GLS was $-19.3 \pm 2.1\%$. Inter-observer reproducibility was excellent for GLS, ICC = 0.81 (0.68–0.89). suPAR levels were not associated with LVEF (*p* = 0.862) in unadjusted comparisons (**Figure 3**). Conversely, there was a significant association between suPAR and GLS (*p* < 0.001), which remained statistically significant (*p* = 0.009) in the multivariate adjusted model (**Table 2**). For the echocardiographic parameters, suPAR levels were significantly correlated with diastolic measures E velocity (*p* = 0.007), A velocity (*p* = 0.021), and E/E' (*p* = 0.011), but not with E/A (*p* = 0.831), E' (*p* = 0.802), or DT (*p* = 0.801) in unadjusted comparisons; but only E velocity, A velocity, and E/E' remained significantly associated with suPAR (*p* = 0.018, *p* = 0.017, and *p* = 0.033, respectively) in multivariate analysis.

suPAR, Cardiac Biomarkers, and GLS

Associations between suPAR, cardiac biomarkers, and GLS were examined in unadjusted and adjusted models (**Table 3**). In unadjusted comparisons, suPAR (*p* < 0.001), TNF- α (*p* = 0.032), and sAXL (*p* = 0.033) were significantly correlated with GLS. However, after multivariate adjustment, only suPAR (*p* = 0.009) remained associated with GLS.

Prognostic Value of suPAR and GLS

The median follow-up time was 7.5 months (interquartile range: 3.75–18). At 5 years, 51 patients (98%) were deceased. In univariate Cox regression, the use of diuretics and beta

blockers were the only clinical factors associated with all-cause mortality. In unadjusted models, GLS and multiple biomarkers including suPAR, CRP, TNF- α , angiotensin-2, and resistin were independently associated with all-cause mortality (data not shown). After adjusting for age, suPAR, and GLS remained significantly associated with all-cause mortality. However, in the multivariate model, only GLS remained an independent predictor of all-cause mortality (data not shown).

DISCUSSION

In this study of 52 pretreated stage IV NSCLC patients with normal LVEF and without ESRD, we investigated associations between the biomarker suPAR and GLS as a measure of subclinical LV dysfunction. We also assessed associations between suPAR, other biomarkers, and echocardiographic measures of systolic and diastolic function.

We demonstrated that suPAR was strongly and independently associated with GLS; but not LVEF. In comparison to other cardiac biomarkers, suPAR was the only biomarker associated with GLS after multivariate adjustment. Furthermore, both suPAR and GLS were found to be independent predictors of all-cause mortality, independent of age. These findings suggest that suPAR is a sensitive marker of early myocardial impairment with useful prognostic implications.

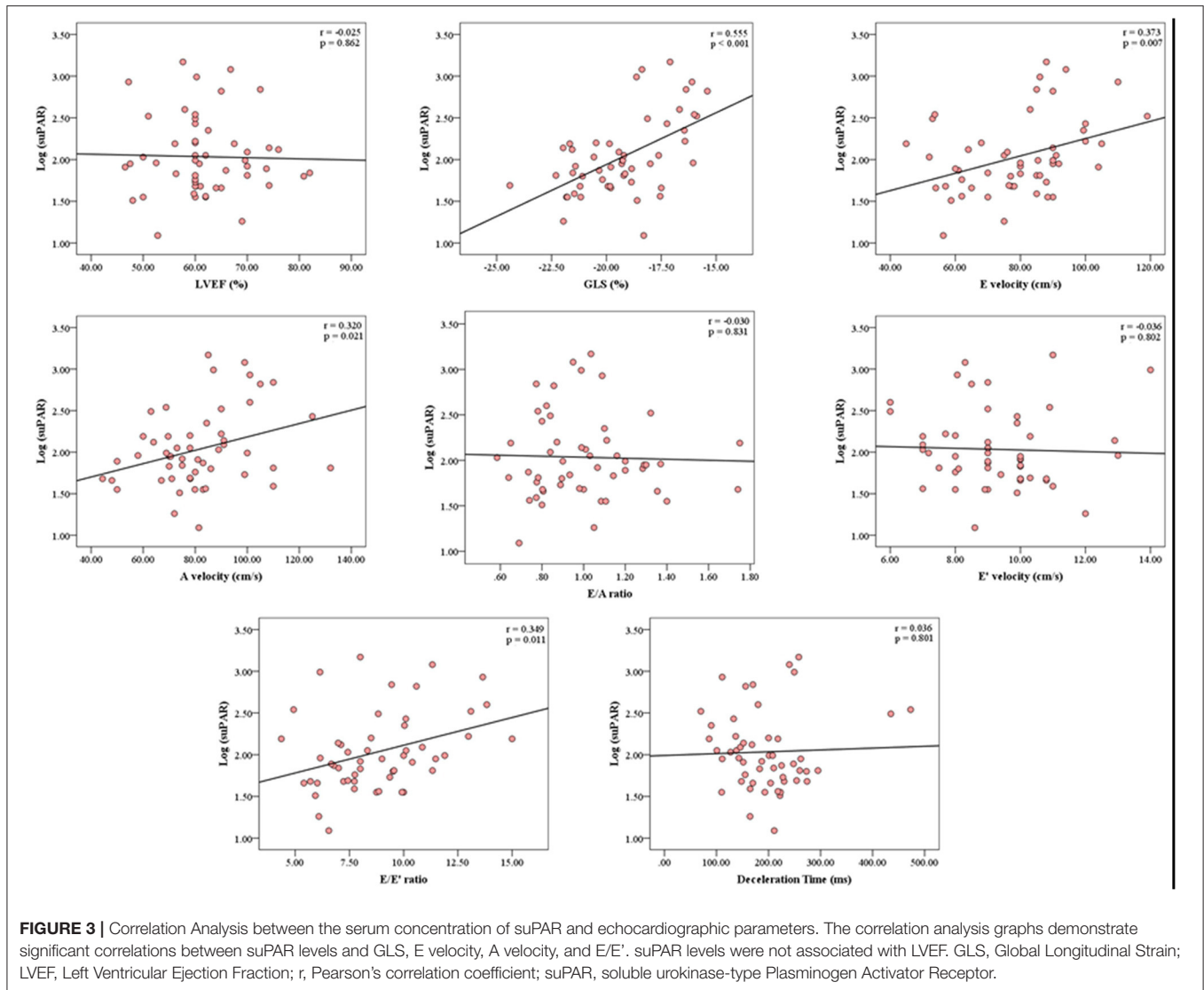
CVD is an important cause of morbidity and mortality in the oncological population due to shared cardiovascular risk factors and direct cardiotoxic effects of cancer therapy. However, current standards for monitoring cardiac dysfunction rely on the presence of functional impairment, precluding any chance of preventing its development (1, 2). In the case of anthracycline-associated LVEF impairment, early initiation (within the first month of discovery of LVEF impairment) of standard heart failure therapy was associated with two-thirds chance of full LVEF recovery, compared with a 0% chance of full recovery if treatment was initiated after 6 months (22). Therefore, more sensitive screening modalities are needed for earlier detection of subclinical heart disease and stratification of patients prone to developing myocardial impairment. Several population-based studies have demonstrated a link between suPAR and CVD and mortality in the general population (9). Our study is the first to investigate associations between plasma suPAR levels and subclinical myocardial impairment in the oncological population.

GLS assessed by STE is an emerging technique for detecting and quantifying subclinical LV systolic dysfunction. GLS is established to be the best measure for predicting cardiotoxicity and clinical dysfunction in cancer patients receiving chemotherapy (4). Furthermore, GLS was found to be superior to LVEF in predicting cardiac events and all-cause mortality in patients with previous CVD or chronic kidney disease (5, 23). However, GLS is not routinely used in practice due to lack of standardization across echocardiographic imaging software and hardware; and the relatively time-consuming nature of GLS acquisition with echocardiographic imaging (24, 25); which is also not currently reimbursed in the United States.

TABLE 1 | Baseline characteristics according to suPAR tertiles.

Parameters	All patients (n = 52)	Tertile 1 (n = 17)	Tertile 2 (n = 18)	Tertile 3 (n = 17)	P-value
suPAR range, pg/mL	2,968–237,980	2,968–6,036	6,090–8,324	8,519–23,798	N/A
Clinical characteristics					
Age, years	62.7 ± 9.4	61.9 ± 9.5	60.9 ± 9.2	65.4 ± 8.2	0.308
Female, n (%)	27 (52%)	11 (65%)	11 (61%)	5 (29%)	0.077
African American, n (%)	10 (19%)	6 (35%)	2 (11%)	2 (12%)	0.127
Body mass index, kg/m ²	25.0 ± 4.9	24.2 ± 4.8	25.4 ± 5.0	25.4 ± 4.9	0.741
Systolic BP, mmHg	121 ± 18	120 ± 12	118 ± 21	126 ± 19	0.385
Diastolic BP, mmHg	72 ± 12	69 ± 10	71 ± 12	76 ± 12	0.207
Smoking history, pack years	27 ± 29	15 ± 14	24 ± 22	44 ± 40	0.014
eGFR, mL/min	86 ± 28	109 ± 24	86 ± 24	62 ± 15	<0.001
Medical history					
Hypertension, n (%)	27 (52%)	7 (41%)	8 (44%)	12 (71%)	0.176
Dyslipidemia, n (%)	18 (35%)	6 (35%)	4 (22%)	8 (47%)	0.316
Diabetes, n (%)	7 (13%)	2 (12%)	3 (17%)	2 (12%)	0.892
Cancer history					
Cancer duration, months	14 ± 12	15 ± 14	10 ± 8	19 ± 13	0.098
Poorly differentiated, n (%)	27 (52%)	10 (59%)	10 (56%)	7 (41%)	0.563
Surgical resection, n (%)	27 (52%)	12 (71%)	7 (39%)	8 (47%)	0.159
Radiation therapy, n (%)	5 (10%)	1 (6%)	2 (11%)	2 (12%)	0.824
Performance status, grade	0.7 ± 0.6	0.6 ± 0.6	0.7 ± 0.6	0.9 ± 0.7	0.232
Medications					
Diuretics, n (%)	13 (25%)	0 (0%)	3 (17%)	10 (59%)	<0.001
Beta blockers, n (%)	24 (46%)	5 (29%)	10 (56%)	9 (53%)	0.249
Calcium channel blockers, n (%)	17 (33%)	5 (29%)	5 (28%)	7 (41%)	0.672
Ace inhibitors/ARBs, n (%)	15 (29%)	3 (18%)	4 (22%)	8 (47%)	0.129
Statins, n (%)	19 (37%)	8 (47%)	4 (22%)	7 (41%)	0.290
Biomarkers					
Creatinine, mg/dL	1.0 ± 0.4	0.7 ± 0.2	0.9 ± 0.3	1.2 ± 0.3	<0.001
CRP, mg/L	16.3 ± 17.6	6.8 ± 7.2	14.8 ± 11.7	27.4 ± 23.6	0.001
IL-6, ng/mL	6.6 ± 9.8	4.3 ± 7.8	4.6 ± 5.8	11.2 ± 13.4	0.065
TNF- α , ng/mL	6.0 ± 5.0	4.3 ± 3.5	5.2 ± 2.7	8.6 ± 7.0	0.030
sAXL, pg/mL	1372.1 ± 660.8	1098.8 ± 501.9	1193.2 ± 478.1	1843.8 ± 734.9	0.001
Angiotensin-2, pg/mL	2,389 ± 1,679	1,590 ± 1,106	2,626 ± 1,951	2,937 ± 1,630	0.046
Resistin	4,982 ± 2,704	4,106 ± 1,891	5,081 ± 2,442	5,755 ± 3,455	0.205
Endothelin-1, pg/mL	18.0 ± 77.3	37.3 ± 135.5	7.4 ± 4.4	10.0 ± 7.0	0.462
Echocardiographic characteristics					
LVEF, %	61.9 ± 8.3	61.7 ± 8.0	62.9 ± 10.0	61.1 ± 6.8	0.805
GLS, %	-19.3 ± 2.1	-20.3 ± 1.9	-19.6 ± 1.6	-17.8 ± 2.1	0.001
E velocity, m/s	0.8 ± 0.2	0.7 ± 0.1	0.8 ± 0.1	0.9 ± 0.2	0.034
A velocity, m/s	0.8 ± 0.2	0.8 ± 0.2	0.8 ± 0.2	0.9 ± 0.2	0.107
E/A ratio	1.0 ± 0.3	1.0 ± 0.3	1.0 ± 0.2	1.0 ± 0.3	0.881
E' velocity, cm/s	9.2 ± 1.7	9.5 ± 1.3	9.0 ± 1.4	9.2 ± 1.2	0.698
E/E' ratio	8.8 ± 2.4	7.6 ± 1.5	8.9 ± 1.9	9.9 ± 3.2	0.025
Deceleration time, ms	195 ± 75	202 ± 45	187 ± 56	198 ± 112	0.828

P-values are for unadjusted comparisons (analysis of variance or χ^2) between tertiles of suPAR. Values are presented as mean \pm standard deviation or as percentages (%). BP, blood pressure; CRP, C-reactive protein; GFR, glomerular filtration rate; IL-6, interleukin-6; LVEF, left ventricular ejection fraction; sAXL, soluble AXL; TNF- α , tumor necrosis factor- α .



Over the last decade, measurement of cardiac-specific biomarkers has emerged as a new cost-effective diagnostic tool aimed at early identification of patients more prone to developing cardiotoxicity (6). suPAR is thought to reflect activation of the inflammatory and immune systems and has been associated with poor clinical outcomes (12, 26, 27). suPAR has been associated with the presence of coronary micro- and macrovascular disease, carotid plaques, stroke, myocardial ischemia, and cardiovascular death, independent of traditional CV risk factors and hs-CRP (9, 13, 28–30). Moreover, suPAR, which has been linked to vascular inflammation, is a better marker for CVD compared with other markers of inflammation such as hs-CRP (12, 13, 31, 32). Despite the observed association between suPAR and several aspects of CVD, it remains unclear whether suPAR is playing a causal role.

In our cohort of stage IV NSCLC patients, the levels of suPAR were noticeably greater than those in similar non-oncological study populations. This is in line with previous studies in cancer patients showing more significant suPAR elevations

when compared with healthy controls (9, 33). Urokinase-type plasminogen activator receptor (uPAR) is present in NSCLC tissue (7) and is thought to be released into the plasma leading to increased suPAR levels. Our patient cohort was treated with antineoplastic drugs, including first-line platinum-based therapy, at the time of the study. Therefore, it cannot be determined from the present data whether this treatment may have caused the release of suPAR (e.g., from dead cancer cells) or whether the plasma suPAR levels are independent of antineoplastic treatment. Notably, platinum-based therapy has not been shown to be related to diastology (15) or general LV dysfunction, including LVEF (15, 34). We demonstrated that suPAR levels were not significantly associated with history of radiation therapy, surgical resection, poorly differentiated histology, or cancer duration. We suspect this may be related to the variability of timing of symptom onset to diagnosis in these late stage cancer patients.

In the current study, we examined the relationship between cardiac biomarkers and systolic function in cancer patients with normal LVEF and without ESRD. We demonstrated that suPAR

TABLE 2 | Multivariate linear regression analysis showing association between suPAR and echocardiographic parameters after adjusting for important covariates.

	β (95% CI)	P-value
LVEF (%)	0.334 (−6.025 to 6.693)	0.916
GLS (%)	1.710 (0.446–2.975)	0.009
E velocity	14.845 (2.694–26.995)	0.018
A velocity	17.097 (3.193–31.002)	0.017
E/A ratio	−0.057 (−0.268 to 0.154)	0.590
E' velocity	−0.158 (−1.229 to 0.913)	0.767
E/E' ratio	1.721 (0.142–3.301)	0.033
DT	13.625 (−45.388 to 72.637)	0.644

Model adjusts for age, sex, BMI, smoking history, SBP, diabetes, creatinine, and poorly differentiated histology. DT, Deceleration Time; LVEF, Left Ventricular Ejection Fraction; GLS, Global Longitudinal Strain.

TABLE 3 | Univariate and Multivariate associations between biomarkers and GLS.

Biomarker	Univariate		Multivariate	
	r-value	P-value	β (95% CI)	P-value
suPAR	0.555	<0.001	1.710 (0.446–2.975)	0.009
IL-6	0.122	0.398	0.114 (−0.138 to 0.367)	0.366
TNF- α	0.297	0.032	0.184 (−0.402 to 0.770)	0.532
CRP	0.095	0.504	0.135 (−0.301 to 0.571)	0.536
sAXL	0.295	0.033	0.287 (−0.901 to 1.475)	0.628
Angiotensin-2	0.117	0.410	0.035 (−0.811 to 0.882)	0.933
Resistin	0.159	0.259	0.001 (−1.163 to 1.164)	0.999
Endothelin-1	0.101	0.478	−0.154 (−0.830 to 0.521)	0.647

Model adjusts for age, sex, BMI, smoking history, SBP, diabetes, creatinine, and poorly differentiated histology. CRP, C-reactive protein; IL-6, interleukin-6; LVEF, Left Ventricular Ejection Fraction; GLS, Global Longitudinal Strain; r-value, Pearson's correlation coefficient; sAXL, soluble AXL; TNF- α , tumor necrosis factor- α .

was the only biomarker associated with GLS after multivariate adjustment. Interestingly, we found no association between suPAR and LVEF, suggesting that suPAR may be more reflective of early myocardial changes. These findings are supported by Theidela et al. in a diabetic population with normal LVEF and without ESRD (35). In contrast, Fujita et al. showed an association between suPAR and LVEF in patients with ischemic heart disease and impaired renal function (36), likely because suPAR levels are elevated in patients with renal disease (10) as was the case in our univariate analysis.

We also examined the relationship between suPAR and diastolic parameters. Consistent with other studies (35, 37) suPAR was significantly associated with diastolic function (E/E') after multivariate adjustment. This could be related to impaired coronary microcirculation and increased arterial stiffness seen in patients with elevated suPAR levels (37–40).

It is noteworthy that in the early results of the Strain Surveillance of Chemotherapy for Improving Cardiovascular Outcomes [SUCCOR] randomized trial (41), there was no significant difference between GLS and LVEF-guided management of potential cardiotoxicity in majority breast cancer

patients treated with doxorubicin therapy. Major critiques and flaws of this study were that first, unlike our current study, the mean dose of doxorubicin administered in the SUCCOR trial was <250 mg/m², the threshold for cardiotoxicity risk associated with doxorubicin therapy. Second, LVEF and GLS in the SUCCOR trial were in the normal range at baseline and follow-up, with therefore limited power for detection of changes in LVEF or GLS. Third, the first two problems listed above were compounded by the short trial duration of follow-up, which further limited the ability of the study to detect differences between the two groups. Despite these challenges, the SUCCOR trial still demonstrated that fewer patients had cardiotoxicity in the GLS-guided than the LVEF-guided arm; and that among those that received medical therapy for cardiotoxicity risk, there were larger reductions in LVEF at follow-up in the LVEF-guided arm compared with the GLS-guided arm.

The prognostic value of both suPAR and CRP have been well-documented in different types of cancers, including NSCLC (35, 41, 42). Similarly, GLS is a useful prognostic marker in multiple disease processes, including CVD and malignancy (9). In line with previous studies, we demonstrate consistent prognostic value of suPAR, CRP, and GLS in predicting all-cause mortality in our age-adjusted NSCLC cohort. However, after multivariate only GLS and CRP remain independent predictors of all-cause mortality.

Our results suggest that suPAR may be a valid biomarker for subclinical myocardial impairment as the association between suPAR and GLS remained significant even after adjustment of important covariates. Given this observed relationship between suPAR and subclinical myocardial dysfunction, suPAR measurements may therefore be useful in clinical practice in identifying oncological patients at risk of developing heart disease. suPAR as a simple, inexpensive, and readily available test, could be a useful surrogate marker to circumvent the difficulty and costs associated with serial GLS measurements, particularly in cancer survivorship years.

Strengths and Limitations

As a single-center retrospective study, our study cannot provide information on the causal or resultant nature of the relationship between suPAR and early myocardial impairment. Furthermore, as a retrospective study, prior heart disease was determined by the information documented in the electronic medical records, and could not be ascertained. Echocardiographic examination and blood draw for suPAR measurements were not performed simultaneously, which could affect accurate comparisons. Also, because many of the patients were lost to follow-up in the community after cancer therapy, we did not have direct access to cardiovascular events data. We had access to the deaths data because of the cancer registry that meticulously obtains and records death information from the social security death index. Lastly, our small sample size was partly due to missing values which could have induced bias, thus limiting the interpretation of the results. Nonetheless, the robust associations between suPAR and GLS, despite the small sample size, emphasizes the strength of our study findings.

CONCLUSIONS

In patients with stage IV NSCLC with normal LVEF and without known heart disease or end-stage renal disease, suPAR was significantly associated with GLS and markers of diastolic LV myocardial impairment. Additionally, suPAR outperformed other cardiac biomarkers in its association with GLS. Moreover, suPAR and GLS were found to be independent predictors of all-cause mortality, independent of age. suPAR is a readily available and inexpensive marker. In order to limit costs associated with serial echocardiographic imaging, further research is required to evaluate the possible role of suPAR in screening for subclinical LV dysfunction—during treatment and particularly in cancer survivorship years—in the high-risk oncological population.

DATA AVAILABILITY STATEMENT

The original contributions presented in the study are included in the article/supplementary material, further inquiries can be directed to the corresponding author/s.

REFERENCES

- Jannazzo A, Hoffman J, Lutz M. Monitoring of anthracycline-induced cardiotoxicity. *Ann Pharmacother.* (2008) 42:99–104. doi: 10.1345/aph.1K359
- Tan TC, Scherrer-Crosbie M. Assessing the cardiac toxicity of chemotherapeutic agents: role of echocardiography. *Curr Cardiovasc Imaging Rep.* (2012) 5:403–9. doi: 10.1007/s12410-012-9163-3
- Gorcsan J III, Tanaka H. Echocardiographic assessment of myocardial strain. *J Am Coll Cardiol.* (2011) 58:1401–13. doi: 10.1016/j.jacc.2011.06.038
- Thavendiranathan P, Poulin F, Lim KD, Plana JC, Woo A, Marwick TH. Use of myocardial strain imaging by echocardiography for the early detection of cardiotoxicity in patients during and after cancer chemotherapy: a systematic review. *J Am Coll Cardiol.* (2014) 63:2751–68. doi: 10.1016/j.jacc.2014.01.073
- Kalam K, Otahal P, Marwick TH. Prognostic implications of global LV dysfunction: a systematic review and meta-analysis of global longitudinal strain and ejection fraction. *Heart.* (2014) 100:1673–80. doi: 10.1136/heartjnl-2014-305538
- Christenson ES, James T, Agrawal V, Park BH. Use of biomarkers for the assessment of chemotherapy-induced cardiac toxicity. *Clin Biochem.* (2015) 48:223–35. doi: 10.1016/j.clinbiochem.2014.10.013
- Pappot H, Hoyer-Hansen G, Ronne E, Hansen HH, Brunner N, Dano K, et al. Elevated plasma levels of urokinase plasminogen activator receptor in non-small cell lung cancer patients. *Eur J Cancer.* (1997) 33:867–72. doi: 10.1016/S0959-8049(96)00523-0
- Han B, Nakamura M, Mori I, Nakamura Y, Kakudo K. Urokinase-type plasminogen activator system and breast cancer (Review). *Oncol Rep.* (2005) 14:105–12.
- Eugen-Olsen J, Andersen O, Linneberg A, Ladelund S, Hansen TW, Langkilde A, et al. Circulating soluble urokinase plasminogen activator receptor predicts cancer, cardiovascular disease, diabetes and mortality in the general population. *J Intern Med.* (2010) 268:296–308. doi: 10.1111/j.1365-2796.2010.02252.x
- Hayek SS, Sever S, Ko YA, Trachtman H, Awad M, Wadhvani S, et al. Soluble urokinase receptor and chronic kidney disease. *N Engl J Med.* (2015) 373:1916–25. doi: 10.1056/NEJMoa1506362
- Wei C, Hindi SE, Li J, Fornoni A, Goes N, Sageshima J, et al. Circulating urokinase receptor as a cause of focal segmental glomerulosclerosis. *Nat Med.* (2011) 17:952–60. doi: 10.1038/nm.2411

ETHICS STATEMENT

The studies involving human participants were reviewed and approved by Rush University Medical Center. Written informed consent for participation was not required for this study in accordance with the national legislation and the institutional requirements.

AUTHOR CONTRIBUTIONS

AM, FB, and TO designed and executed the study. JB performed biomarker collection. AM and TO analyzed the data. AM and FB drafted the initial manuscript. TO, JB, and JR revised and discussed the manuscript. All co-authors have contributed to the development of this research project and the writing of this manuscript. All authors read and approved the manuscript for publication.

ACKNOWLEDGMENTS

Biomarker collection was supported by an award from Swim Across America Foundation to JB.

- Lyngbaek S, Sehested T, Marott JL, Hansen TW, Olsen MH, Andersen O, et al. CRP and suPAR are differently related to anthropometry and subclinical organ damage. *Int J Cardiol.* (2013) 167:781–5. doi: 10.1016/j.ijcard.2012.03.040
- Lyngbaek S, Sehested T, Marott JL, Hansen TW, Olsen MH, Andersen O, et al. Cardiovascular risk prediction in the general population with use of suPAR, CRP, and Framingham Risk Score. *Int J Cardiol.* (2013) 167:2904–11. doi: 10.1016/j.ijcard.2012.07.018
- Ferlay J, Soerjomataram I, Dikshit R, Eser S, Mathers C, Rebelo M, et al. Cancer incidence and mortality worldwide: sources, methods and major patterns in GLOBOCAN 2012. *Int J Cancer.* (2015) 136:359–86. doi: 10.1002/ijc.29210
- Omersa D, Cufer T, Marcun R, Lainscak M. Echocardiography and cardiac biomarkers in patients with non-small cell lung cancer treated with platinum-based chemotherapy. *Radiol Oncol.* (2016) 51:15–22. doi: 10.1515/raon-2016-0037
- Fidler MJ, Frankenberger C, Seto R, Lobato GC, Fhied CL, Sayidine S, et al. Differential expression of circulating biomarkers of tumor phenotype and outcomes in previously treated non-small cell lung cancer patients receiving erlotinib vs. cytotoxic chemotherapy. *Oncotarget.* (2017) 8:58108–21. doi: 10.18632/oncotarget.17510
- Levey AS, Coresh J, Greene T, Stevens LA, Zhang YL, Hendriksen S, et al. Chronic kidney disease epidemiology collaboration. using standardized serum creatinine values in the modification of diet in renal disease study equation for estimating glomerular filtration rate. *Ann Intern Med.* (2006) 145:247–54. doi: 10.7326/0003-4819-145-4-200608150-00004
- Lang RM, Bierig M, Devereux RB, Flachskampf FA, Foster E, Pellikka PA, et al. Recommendations for chamber quantification: a report from the American Society of Echocardiography's Guidelines and Standards Committee and the Chamber Quantification Writing Group, developed in conjunction with the European Association of Echocardiography, a branch of the European Society of Cardiology. *J Am Soc Echocardiography.* (2005) 18:1440–63. doi: 10.1016/j.echo.2005.10.005
- Kasner M, Westermann D, Steendijk P, Gaub R, Wilkenschhoff U, Weitmann K, et al. Utility of Doppler echocardiography and tissue Doppler imaging in the estimation of diastolic function in heart failure with normal ejection fraction: a comparative Doppler-conductance catheterization study. *Circulation.* (2007) 116:637–47. doi: 10.1161/CIRCULATIONAHA.106.661983
- Nagueh SF, Appleton CP, Gillebert TC, Marino PN, Oh JK, Smiseth OA, et al. Recommendations for the evaluation of left ventricular diastolic

- function by echocardiography. *Europ J Echocardiography*. (2009) 10:165–93. doi: 10.1093/ejechocard/jep007
21. Borgia JA, Basu S, Faber LP, Kim AW, Coon JS, Kaiser-Walters KA, et al. Establishment of a multi-analyte serum biomarker panel to identify lymph node metastases in non-small cell lung cancer. *J Thorac Oncol*. (2009) 4:338–47. doi: 10.1097/JTO.0b013e3181982abf
 22. Cardinale D, Colombo A, Lamantia G, Colombo N, Civelli M, Giacomi GD, et al. Anthracycline-induced cardiomyopathy: clinical relevance and response to pharmacologic therapy. *J Am Coll Cardiol*. (2010) 55:213–20. doi: 10.1016/j.jacc.2009.03.095
 23. Krishnasamy R, Isbel NM, Hawley CM, Pascoe EM, Burrage M, Leano R, et al. Left Ventricular Global Longitudinal Strain (GLS) is a superior predictor of all-cause and cardiovascular mortality when compared to ejection fraction in advanced chronic kidney disease. *PLoS One*. (2015) 10:e0127044. doi: 10.1371/journal.pone.0127044
 24. Nelson MR, Hurst RT, Raslan SF, Cha S, Wilansky S, Lester SJ. Echocardiographic measures of myocardial deformation by speckle-tracking technologies: the need for standardization? *J Am Soc Echocardiogr*. (2012) 25:1189–94. doi: 10.1016/j.echo.2012.08.006
 25. Smiseth OA, Torp H, Opdahl A, Haugaa KH, Urheim S. Myocardial strain imaging: how useful is it in clinical decision making? *Eur Heart J*. (2016) 37:1196–207. doi: 10.1093/eurheartj/ehv529
 26. Andersen O, Eugen-Olsen J, Kofoed K, Iversen J, Haugaard SB. Soluble urokinase plasminogen activator receptor is a marker of dysmetabolism in HIV-infected patients receiving highly active antiretroviral therapy. *J Med Virol*. (2008) 80:209–16. doi: 10.1002/jmv.21114
 27. Eapen DJ, Manocha P, Ghasemzadeh N, Patel RS, Kassem HA, Hammadah M, et al. Soluble urokinase plasminogen activator receptor level is an independent predictor of the presence and severity of coronary artery disease and of future adverse events. *J Am Heart Assoc*. (2014) 3:e001118. doi: 10.1161/JAHA.114.001118
 28. Lyngbæk S, Andersson C, Marott JL, Møller DV, Christiansen M, Iversen KK, et al. Soluble urokinase plasminogen activator receptor for risk prediction in patients admitted with acute chest pain. *Clin Chem*. (2013) 59:1621–9. doi: 10.1373/clinchem.2013.203778
 29. Persson M, Ostling G, Smith G, Hamrefors V, Melander O, Hedblad B, et al. Soluble urokinase plasminogen activator receptor: a risk factor for carotid plaque, stroke, and coronary artery disease. *Stroke*. (2014) 45:18–23. doi: 10.1161/STROKEAHA.113.003305
 30. Theilade S, Lyngbæk S, Hansen TW, Eugen-Olsen J, Fenger M, Rossing P, et al. Soluble urokinase plasminogen activator receptor levels are elevated and associated with complications in patients with type 1 diabetes. *J Intern Med*. (2015) 277:362–71. doi: 10.1111/joim.12269
 31. Hodges GW, Bang CN, Wachtell K, Eugen-Olsen J, Jeppesen JL. suPAR: a new biomarker for cardiovascular disease? *Can J Cardiol*. (2015) 31:1293–302. doi: 10.1016/j.cjca.2015.03.023
 32. Sommerer C, Zeier M, Morath C, Reiser J, Scharnagl H, Stojakovic T, et al. Soluble urokinase plasminogen activation receptor and long-term outcomes in persons undergoing coronary angiography. *Sci Rep*. (2019) 9:475. doi: 10.1038/s41598-018-36960-6
 33. Cobos E, Jumper C, Lox C. Pretreatment determination of the serum urokinase plasminogen activator and its soluble receptor in advanced small-cell lung cancer or non-small-cell lung cancer. *Clin Appl Thromb Hemost*. (2003) 9:241–6. doi: 10.1177/107602960300900309
 34. Wachters FM, Van Der Graaf WT, Groen HJ. Cardiotoxicity in advanced non-small cell lung cancer patients treated with platinum and non-platinum based combinations as first-line treatment. *Anticancer Res*. (2004) 24:2079–83.
 35. Theilade S, Rossing P, Eugen-Olsen J, Jensen JS, Jensen MT. suPAR level is associated with myocardial impairment assessed with advanced echocardiography in patients with type 1 diabetes with normal ejection fraction and without known heart disease or end-stage renal disease. *Eur J Endocrinol*. (2016) 174:745–53. doi: 10.1530/EJE-15-0986
 36. Fujita SI, Tanaka S, Maeda D, Morita H, Fujisaka T, Takeda Y, et al. Serum soluble urokinase-type plasminogen activator receptor is associated with low left ventricular ejection fraction and elevated plasma brain-type natriuretic peptide level. *PLoS One*. (2017) 12:e0170546. doi: 10.1371/journal.pone.0170546
 37. Fujisaka T, Fujita SI, Maeda D, Shibata K, Takahashi H, Morita H, et al. Association between suPAR and cardiac diastolic dysfunction among patients with preserved ejection fraction. *Heart Vessels*. (2017) 32:1327–36. doi: 10.1007/s00380-017-1002-7
 38. Namba T, Masaki N, Matsuo Y, Sato A, Kimura T, Horii S, et al. Arterial stiffness is significantly associated with left ventricular diastolic dysfunction in patients with cardiovascular disease. *Int Heart J*. (2016) 57:729–35. doi: 10.1536/ihj.16-112
 39. Maréchaux S, Samson R, van Belle E, Breyne J, de Monte J, Dedrie C, et al. Vascular and microvascular endothelial function in heart failure with preserved ejection fraction. *J Card Fail*. (2016) 22:3–11. doi: 10.1016/j.cardfail.2015.09.003
 40. Hsu PC, Tsai WC, Lin TH, Su HM, Voon WC, Lai WT, et al. Association of arterial stiffness and electrocardiography-determined left ventricular hypertrophy with left ventricular diastolic dysfunction. *PLoS One*. (2012) 7:e49100. doi: 10.1371/journal.pone.0049100
 41. Thavendiranathan P, Negishi T, Somerset E, Negishi K, Penicka M, Lemieux J, et al. Strain-Guided management of potentially cardiotoxic cancer therapy. *JACC*. (2021) 77:392–401. doi: 10.1016/j.jacc.2020.11.020
 42. Shrotriya S, Walsh D, Bennani-Baiti N, Thomas S, Lorton C. C-Reactive protein is an important biomarker for prognosis tumor recurrence and treatment response in adult solid tumors: a systematic review. *PLoS One*. (2015) 10:e0143080. doi: 10.1371/journal.pone.0143080

Conflict of Interest: JR is a cofounder of TRISAQ which develops drugs against suPAR and in which he has financial interest including stock.

The remaining authors declare that the research was conducted in the absence of any commercial or financial relationships that could be construed as a potential conflict of interest.

Publisher's Note: All claims expressed in this article are solely those of the authors and do not necessarily represent those of their affiliated organizations, or those of the publisher, the editors and the reviewers. Any product that may be evaluated in this article, or claim that may be made by its manufacturer, is not guaranteed or endorsed by the publisher.

Copyright © 2022 Manshad, Ballout, Borgia, Reiser and Okwuosa. This is an open-access article distributed under the terms of the Creative Commons Attribution License (CC BY). The use, distribution or reproduction in other forums is permitted, provided the original author(s) and the copyright owner(s) are credited and that the original publication in this journal is cited, in accordance with accepted academic practice. No use, distribution or reproduction is permitted which does not comply with these terms.