



# Knockdown of lncRNA ENST00000609755.1 Confers Protection Against Early oxLDL-Induced Coronary Heart Disease

## OPEN ACCESS

### Edited by:

Christian Schulte,  
University Heart and Vascular Center  
Hamburg (UHZ), Germany

### Reviewed by:

Clint L. Miller,  
University of Virginia, United States  
Marieke Rienks,  
King's College London,  
United Kingdom

### \*Correspondence:

Siying Wu  
fmuwsy@163.com  
Huangyuan Li  
fmulhy@163.com  
Shaowei Lin  
9410526@qq.com

†These authors have contributed  
equally to this work

### Specialty section:

This article was submitted to  
Cardiovascular Genetics and Systems  
Medicine,  
a section of the journal  
Frontiers in Cardiovascular Medicine

Received: 12 January 2021

Accepted: 12 April 2021

Published: 21 May 2021

### Citation:

Sun Y, Huang S, Wan C, Ruan Q,  
Xie X, Wei D, Li G, Lin S, Li H and  
Wu S (2021) Knockdown of lncRNA  
ENST00000609755.1 Confers  
Protection Against Early  
oxLDL-Induced Coronary  
Heart Disease.  
Front. Cardiovasc. Med. 8:650212.  
doi: 10.3389/fcvm.2021.650212

Yi Sun<sup>1†</sup>, Shuna Huang<sup>2†</sup>, Chunyu Wan<sup>1†</sup>, Qishuang Ruan<sup>3†</sup>, Xiaoxu Xie<sup>1</sup>, Donghong Wei<sup>1</sup>,  
Guobo Li<sup>1</sup>, Shaowei Lin<sup>1\*</sup>, Huangyuan Li<sup>1\*</sup> and Siying Wu<sup>1\*</sup>

<sup>1</sup> School of Public Health, Fujian Medical University, Fuzhou, China, <sup>2</sup> Department of Clinical Research and Translation Center Office, The First Affiliated Hospital of Fujian Medical University, Fuzhou, China, <sup>3</sup> Department of Orthopedics, Fujian Medical University Union Hospital, Fuzhou, China

**Background:** This study investigated the association between long non-coding RNAs (lncRNAs) and coronary heart disease (CHD) and further elucidated the potential biological roles of lncRNAs in CHD pathogenesis.

**Methods:** A case-control study (590 patients and 590 controls) was conducted from February 2017 and March 2019 in Fuzhou, China. Environmental factors were investigated using questionnaires and physical examinations. Five representative lncRNAs were screened using lncRNA microarray (peripheral blood in 5 cases and 5 controls) and further verified by quantitative real-time polymerase chain reaction (peripheral blood leukocyte in 100 cases and 100 controls). Oxidized low-density lipoprotein (oxLDL) was used to induce a human coronary artery endothelial cell (HCAECs) injury model, and loss of function was used to elucidate the role of lncRNA ENST00000609755.1 (lnc-MICALL2-2) in oxLDL-induced HCAECs injury.

**Results:** A total of 320 lncRNAs were found dysregulated in CHD patients (fold change > 2,  $p < 0.05$ ). The results of a discovery microarray, population verification and HCAEC experiments suggested the lnc-MICALL2-2 is upregulated in CHD subjects and in an oxLDL-induced HCAECs injury model. Conversely, lnc-MICALL2-2 inhibition *in vitro* attenuated the effects of oxLDL on HCAECs morphology, proliferation, and apoptosis.

**Conclusion:** Elevated expression of lnc-MICALL2-2 is an independent risk factor for CHD, and knockdown subsequently confers protection against early pathological processes of oxLDL-induced CHD.

**Keywords:** coronary heart disease, long non-coding RNA, environmental factors, oxidized low-density lipoprotein, human coronary artery endothelial cells

## INTRODUCTION

Coronary heart disease (CHD) is an ischemic heart disease and leading cause of death globally (1). There remains a need for increased understanding of the pathogenesis of CHD and the identification of new targets for the early diagnosis and therapy of CHD patients. Currently, it is recognized that family history of CHD, tobacco and alcohol consumption, sedentary lifestyle, obesity, anxiety, and depression are all environmental risk factors for CHD (2–5). However, these external factors can only partially explain the etiology of CHD. In addition to environmental and genetic predisposing factors, mounting evidence has shown that epigenetic alteration may play pivotal roles in the progression of CHD (6, 7).

Long non-coding RNAs (lncRNAs) are non-coding RNAs that are >200 nucleotides in length and widely distributed in the nucleus and cytoplasm (8). Approximately 321 lncRNAs have been identified in the mouse myocardium, the profile of which has demonstrated significant changes during development compared to the quiescent adult stage (9). It has been experimentally demonstrated that many of these lncRNAs particularly play a role in the regulation of pluripotency and the activation of cardiac-specific genes (10). The proximity of lncRNAs to known vascular disease-susceptibility loci helped to identify lncRNAs such as ANRIL and MIAT, subsequently shown to be associated with CHD risk (11) and myocardial infarction (12), respectively. Further, microarray approaches have identified thousands of abnormally expressed lncRNAs during human or animal models of cardiomyopathy (13). Despite the deep implications of lncRNAs in cardiovascular disease, their precise roles and mechanisms are not yet understood, especially in CHD.

Recent studies have reported that lncRNAs play a critical role in regulation of diverse cellular processes, such as vascular endothelial cells (VECs) dysfunction, vascular smooth muscle cell (VSMCs) proliferation, and lipid metabolism (14–16). VECs remodeling is considered a pivotal first step in the pathogenesis of CHD (17). Evidence for the role of lncRNAs in VECs remodeling comes from the finding that VECs under hypoxic stress upregulate the lncRNA MALAT1, which suggest an angiogenic effect in ischemia (14). In another study, investigators report that the lncRNA TGFB2-OT1 regulates various miRNA targets which participate in autophagy and induce pro-inflammatory cytokines of VECs (18). Oxidized low density lipoprotein (oxLDL) can disrupt the growth and survival of human coronary artery endothelial cells (HCAECs) through a malondialdehyde dependent pathway involving methylation of the FGF2 promoter and repression of FGF2 transcription (19). This oxLDL-induced VECs dysfunction can occur at concentrations as low as 50–150 µg/ml (20–22). Using this model in human umbilical

vein endothelial cells, investigators have profiled thousands of abnormally expressed lncRNA, including fold changes as high as ~87-fold upregulated and ~28-fold downregulated (23). In this study, we choose HCAECs as the tool cells, the main considerations are: (1) Coronary artery endothelial injury is the early stage of the development of CHD. (2) HCAECs are widely used as tool cells to explore oxidative damage including endothelial dysfunction caused by ox-LDL (24–26). (3) The primary HCAECs ox-LDL injury model used in this manuscript is closer to the pathological conditions of CHD.

In this study we hypothesize that lncRNAs can affect the pathogenesis of CHD by regulating the biological function of VECs. To explore this hypothesis and the underlying molecular roles of target lncRNAs, a discovery microarray was executed in a small cohort of CHD and non-CHD patient samples. The lncRNA ENST00000609755.1 (lnc-MICALL2-2) was identified and validated as a potential target in CHD patients. Subsequently, HCAECs were exposed to oxLDL *in vitro* as a preliminary injury model for the exploration of the biological roles of lnc-MICALL2-2 during the controlled, early pathogenesis of CHD. This investigation lays groundwork for the further examination of a novel lncRNA that is abnormally regulated and biologically relevant in CHD.

## MATERIALS AND METHODS

### Study Population and Environmental Factors

A total of 590 CHD patients and 590 controls were enrolled between February 2017 and March 2019 from the First Affiliated Hospital of Fujian Medical University and Fujian Medical University Union Hospital, China. The included CHD patients met the following criteria: (a) must present cardiac catheterization-confirmed stenosis ( $\geq 50\%$ ) in >1 major coronary artery; or (b) have a documented history of myocardial infarction; or (c) have a documented history of coronary revascularization (either by PCI or CABG); or (d) be enrolled during the stable stage after acute myocardial infarction; or (e) present confirmed ST-segment elevation/depression in electrocardiogram readings. This study excluded subjects with congenital heart disease, valvular disease, cardiomyopathy, somatization disorder, renal or hepatic disease, or those with insufficient comprehension of the Mandarin language. Control subjects presented a medical history devoid of cardiovascular diseases and were matched with CHD cases according to age, gender, marital status, and education level. Control subjects were enrolled during routine physical health examinations at the hospital and had not undergone cardiac catheterization. The current study was approved by the Biomedical Research Ethics Committee of Fujian Medical University. All enrolled patients provided written informed consent, and the study protocol conformed to the ethical guidelines of the Declaration of Helsinki (1975).

Following enrollment, face-to-face interviews were performed to collect environmental exposure history. Sessions were conducted by trained interviewers according

**Abbreviations:** CHD, Coronary heart disease; lncRNAs, Long non-coding RNAs; VECs, Vascular endothelial cells; VSMCs, Vascular smooth muscle cells; Ox-LDL, Oxidized low density lipoprotein; HCAECs, Human coronary artery endothelial cells; HCEAC, human coronary artery endothelial cell; FC, Fold change; qRT-PCR, Quantitative real-time polymerase chain reaction; vWF, Von Willebrand factor; SD, Standard deviation; OR, Odds ratio; CI, Confidence interval; BMI, Body mass index; IL-6, Interleukin 6; TNF- $\alpha$ , Tumor necrosis factor alpha; ECs, Endothelial cells.

to a structured questionnaire. Information collected included demographic characteristics, family history of CHD, lifestyle habits, and psychological and physiological indicators (**Supplementary Methods**).

## lncRNAs Microarray Analysis

RNAs obtained from peripheral blood samples of five CHD patients and five non-CHD subjects were extracted for microarray analysis which ensured that as many differential lncRNAs as possible could be found. The basic situation of the 10 object was shown in **Supplementary Table 1** (age range 50–70 years). A fast total RNA extraction kit (Biotech, Beijing, China) was used to extract the total RNA according to the manufacturer's instructions. The extracted RNAs were digested, dephosphorylated, denatured, amplified, and labeled with Cy3-dCTP according to the manufacturer's specifications. GeneSpring software V13.0 (Agilent Technologies, Santa Clara, CA, USA) was used to analyze the lncRNA array results and to summarize and normalize the data. The thresholds for this array were fold change (FC) of  $\geq 2$  or  $\leq -2$  and  $p \leq 0.05$  was the significance standard of *t*-tests. Array data were log-2 transformed and median-centered by genes through the adjusted data function of CLUSTER 3.0 software. Subsequent hierarchical clustering with average linkage was performed.

## Quantitative Real-Time Polymerase Chain Reaction (qRT-PCR)

Total RNA from peripheral blood leukocytes in 100 CHD patients and 100 non-CHD controls (**Table 1**) was extracted by using TRIzol reagent (Invitrogen, California, USA). All total RNA was of high purity with OD260/280 in the range of 1.80–2.00. One percentage of formaldehyde denaturing gel electrophoresis was used to determine the integrity of the RNA. RNA extracts were quantified using a NanoDrop 2000 instrument (Thermo Scientific, USA). One microgram of RNA was reverse-transcribed using a PrimeScript RT Reagent Kit with gDNA Eraser (lncRNAs). Before performing lncRNA detection, all were pre-amplified. The qRT-PCR was performed on a Light Cycler 480 real-time PCR system (Roche, Switzerland) with the SYBR<sup>®</sup> Premix Ex TaqTM II kit (Takara Bio Inc., Shiga, Japan) for 40 cycles.  $\beta$ -actin was used as internal control. lncRNA expression levels were calculated using the  $2^{-\Delta\Delta CT}$  method. **Supplementary Table 2** lists the primers used for qRT-PCR, similar research methods have been applied in previous studies (27, 28).

## HCAECs Culture and Identification

HCAECs was selected as the VECs model and cell culture medium was provided by Procell Life Science & Technology Co., Ltd (Wuhan, China). HCAECs were cultured in medium with 5% CO<sub>2</sub> at 37°C. Cells were grown in monolayer and conventionally passaged when cell attachment rate reached 90%. An inverted microscope (Olympus Corporation, IX51, Japan) was used to observe cell morphology and growth daily.

Von Willebrand factor (vWF) is a protein factor released during synthesis of VECs. This protein not only participates in blood coagulation and thrombosis but also acts as a characteristic

factor in identifying *in-vitro*-cultured VECs (29). HCAECs were stained with vWF by Jaffe method according to standard immunohistochemical staining technique. vWF was stained with Cy3 dye (red) and nuclei were counterstained with 4',6-diamidino-2-phenylindole dye (blue).

## oxLDL Treatment of HCAECs

OxLDL plays an important role in HCAECs dysfunction and has been implicated in atherosclerotic heart disease and CHD, though its mechanisms are not fully known (19, 30). *In vitro*, oxLDL has been used on cultured HCAECs to model the formation of atherosclerosis, as it disrupts the growth and survival of HCAECs (19). OxLDL (Dalian Meilun Biotechnology, Dalian, China) was oxidized using Cu<sub>2</sub>SO<sub>4</sub> (oxidant) in PBS. Oxidation is terminated by adding excess EDTA-Na<sub>2</sub>. Each lot was analyzed on agarose gel electrophoresis for migration vs. LDL. This lot of oxLDL migrated 2.0-fold further than the native LDL and its purity reached more than 98%. To determine the appropriate concentration and exposure length for oxLDL in the treatment of HCAECs, the density of HCAECs in normal logarithmic growth phase was adjusted to  $2 \times 10^5$  cells/ml and cultured in 96-well plates (3 plates, 12 holes per plate) during 3rd passage. HCAECs were incubated with different concentrations of oxLDL (0, 50, 100, and 150  $\mu$ g/ml) for 24, 48, and 72 h, respectively.

## siRNA Transfection

Prior to transfection, HCAECs were seeded at a density of  $5.0 \times 10^5$  cells/ml, and 200  $\mu$ L serum-free Opti-MEM was added into six-well plates. siRNA (Gemma Gene, Shanghai, China) was added at a final concentration of 50 nM. Three lncMICALL2-2-targeting siRNA (siRNA-1, siRNA-2 and siRNA-3, **Supplementary Table 3**), were transfected into HCAECs with Lipofectamine<sup>™</sup> 2000 (Invitrogen, Shanghai, China) according to the manufacturer's instructions. Knockdown was confirmed by assessing the expression of the lncRNA with qRT-PCR. After transfection with the interference fragment, the cells were treated with oxLDL (100  $\mu$ g/ml) and incubated for 48 h at 37°C and 5% CO<sub>2</sub> saturated humidity. The experimental groups were comprised of the following: (1) Normal HCAECs (untreated); (2) HCAECs treated with siRNA (siRNA group); (3) HCAECs treated with oxLDL (oxLDL group); and (4) HCAECs treated with oxLDL + siRNA (oxLDL + siRNA group) and three replicates were performed for each group.

## Transmission Electron Microscopy

HCAEC is processed as described above for 48 h in 6-well plates and processed for electron microscopy as follows: (1) The media were removed and the cells were fixed in 2.5% glutaraldehyde for 3–4 h at room temperature. (2) Rinse with 0.1 M phosphate buffer (PH7.4) 3 times for 15 min each time. (3) 1% osmium acid-0.1 M phosphate buffer (PH7.4) is fixed at room temperature (20°C) for 2 h. (4) Rinse with 0.1 M phosphate buffer (PH7.4) 3 times for 15 min each time. Next, Cell samples were dehydrated, infiltrated and embedded. The details are as follows: (1) Dehydration: 50–70–80–90–95–100% alcohol dehydration, 15 min each time. (2) Infiltration: acetone: 812

**TABLE 1** | Baseline characteristics of study participants.

Characteristics	Total population		<i>p</i> value	Population for qRT-PCR		<i>p</i> -value
	CHD (%) <i>n</i> = 590	Non-CHD (%) <i>n</i> = 590		CHD (%) <i>n</i> = 100	Non-CHD (%) <i>n</i> = 100	
Gender			0.447			1.000
Male	320 (54.2)	333 (56.4)		52 (52.0)	52 (52.0)	
Female	270 (45.8)	257 (43.6)		48 (48.0)	48 (48.0)	
Age			0.866			1.000
<65	272 (46.1)	267 (45.3)		43 (43.0)	43 (43.0)	
≥65	318 (53.9)	323 (54.7)		57 (57.0)	57 (57.0)	
Marital status			0.679			1.000
Marriage	537 (91.0)	541 (91.7)		91 (91.0)	91 (91.0)	
Single and others	53 (9.0)	49 (8.3)		9 (9.0)	9 (9.0)	
Education level			0.684			0.116
Below primary school	260 (44.1)	373 (46.3)		46 (46.0)	58 (58.0)	
Middle school	261 (44.2)	255 (43.2)		35 (35.0)	32 (32.0)	
College or higher	69 (11.7)	62 (10.5)		19 (19.0)	10 (10.0)	

CHD, coronary heart disease; qRT-PCR, quantitative real-time PCR.

embedding agent = 1:1 mixed solution infiltrated overnight. Pure 812 embedding agent penetrated overnight. (3) Embedding: polymerize at 60°C for 48 h. Ultrathin sections (70–80 nm thick) were prepared and stained with uranium acetate and lead citrate. Cells were observed and imaged with a transmission electron microscope (HITACHI, HT7700-SS, Japan).

## Lactate Dehydrogenase (LDH) Release Assay

Supernatant of homogenized cells was used to measure LDH activity using a LDH kit (Built Bioengineering Institute, Nanjing, China) as suggested by the manufacturer. Absorbance of the solution was measured at 450 nm using a microplate reader (Thermo Scientific, MULTISKAN MK3, Beijing, China). And three replicates were performed for each group. Protein concentrations were calculated by standard controls provided in the kit.

## HCAECs Proliferation Assay

A total of 10 μl of Cell Counting Kit-8 (CCK8, Beyotime, Shanghai, China) solution was added to each well of cultured HCAECs, and the cells were incubated for 4 h at 37°C. Absorbance (optical density) was measured at 450 nm and the optical density was used to represent relative cell viability. Each group was represented by three parallel wells and runs were repeated three times for each group.

## HCAECs Apoptosis Assay

Apoptosis assay was performed using AnnexinV-APC-7-AAD Apoptosis Detection Kit (Kaikay Biological, Nanjing, China). Briefly, cells were collected after the indicated treatment, washed twice with cold phosphate-buffered saline, and treated with 500 μl binding buffer, 5 μl Annexin V-APC and 5 μl 7-AAD, followed by incubation at room temperature for 15 min in the dark. The number of cells on the machine was 10,000, and the sample

was loaded at a low speed. According to the experimental cell conditions, the 7-AAD voltage was around 300, and the APC voltage was around 700. Cells were analyzed by flow cytometry to assess apoptosis (Beckman, CytoFLEX, Shanghai, China). Three runs were repeated for each group.

## Statistical Analyses

Distribution differences were examined by  $\chi^2$ -test for categorical variables or two-tailed Student's *t*-test for normally distributed data. LncRNA expression data were presented as mean ± standard deviation (SD). Univariate and multivariate unconditional logistic regression analyses were conducted to show the associations between environmental factors and risk of CHD. Statistically significant variables in univariate analysis were selected for further multivariate analysis. Statistically significant variables in multivariate analysis have been used as confounding factors in adjustments for the associations between lncRNAs and CHD. All tests were two-sided, and *p* < 0.05 was considered statistically significant. All statistical analyses were performed using SPSS 25.0 software.

## RESULT

### Study Population Demographics and Environmental Correlates

The CHD and non-CHD subjects consisted of 590 subjects each. No significant group differences were observed in age, gender, marital status, or education level (*p* > 0.05, **Table 1**), indicating the adequacy of frequency matching. Multivariate analysis revealed that patients in the CHD group were significantly more likely to have a family history of CHD [odds ratio (OR): 1.732; 95% confidence interval (CI): 1.174–2.557], a high-salt diet (OR: 1.543; 95% CI: 1.153–2.066), smoke tobacco (defined as at least 100 cigarettes during their

lifetime) (OR: 2.487; 95% CI: 1.883–3.285), work in a light-intensity environment (classified by intensity, duration, and frequency of the participant's physical activity at work) vs. a moderate-intensity environment (OR: 1.573; 95% CI: 1.175–2.104), suffer from self-rated moderate to severe anxiety (OR: 2.802; 95% CI: 1.013–7.749) and have a BMI  $\geq$  24.0 (OR: 1.511; 95% CI: 1.166–1.985, **Supplementary Table 4**). Detailed criteria for environmental risk factors of CHD are found in **Supplementary Methods**.

## Identification and Validation of Peripheral Blood Lymphocytes Dysregulated lncRNAs

Microarray analyses revealed abnormal lncRNAs expression in the CHD cases provided for initial lncRNA identification (**Figure 1A**). The results of volcano plot and scatter plot indicated that a total of 88 and 232 lncRNAs were significantly up-regulated and significantly down-regulated in the CHD cases, respectively (FC  $>$ 2,  $p <$  0.05, **Figures 1B,C**). We chose 5 novel lncRNA candidates by conscientiously reviewing more stringent parameters (FC,  $p$ -value), variations between replicates and our previous study (28) (**Supplementary Table 5** and **Supplementary Figure 1**). A larger population peripheral blood lymphocytes sample was subsequently used to validate the relative downregulation of lncRNA ENST00000565648.1 (lnc-USP7-1) in CHD subjects compared with non-CHD subjects, as well as the relative upregulation of lnc-MICALL2-2 ( $p <$  0.05, **Figure 2**). These results agree with the findings of the microarray assay. After adjusting for environmental factors (age, gender, marital status, and education level, family history of CHD, high-salt diet, smoking, labor intensity, and BMI), lnc-USP7-1 and lnc-MICALL2-2 remained abnormally expressed in CHD patients compared to non-CHD controls (**Table 2**). On the other hand, no significant differences were observed between groups in the expression of lncRNAs ENST00000450016.1 (LINC01952), ENST00000602339.1 (MIR99AHG), and ENST00000529247.1 (lnc-TIGD5-3) ( $p >$  0.05, **Figure 2**).

## Evaluation of the lncRNA Profiles of HCAECs Treated With oxLDL

*In vitro* HCAECs experiments were further performed to better understand the role that these abnormally regulated lncRNAs may play in the etiology of CHD. First, almost all cells cultured were positive for the marker vWF, indicating that the culture of HCAECs yielded VECs with relatively high purity (**Figure 3A**). The application of oxLDL further revealed that HCAECs viability decreased in tandem with increasing concentrations of oxLDL. This phenomenon was true at exposures of 24, 48, and 72 h (**Figure 3B**). In contrast, no difference in the expression of the lnc-USP7-1 was observed between untreated HCAECs and oxLDL-treated HCAECs ( $p >$  0.05). However, the expression of the lnc-MICALL2-2 was significantly upregulated in HCAECs treated with just 50  $\mu$ g/ml oxLDL for 24 h compared to untreated controls. Interestingly, this effect was not observed at higher concentrations. The upregulation of the lncRNA was also observed at 50–100  $\mu$ g/ml oxLDL at 48 h (**Figure 3C**,  $p <$  0.05), though not in the 150  $\mu$ g/ml oxLDL treated group. No differences

in expression were apparent at any oxLDL dose after 72 h incubation. Based on these findings, the lnc-MICALL2-2 was selected for follow-up study, at a concentration of 100  $\mu$ g/ml oxLDL for 48 h. This concentration and exposure was also of particular interest considering related studies (31).

## Knockdown of lnc-MICALL2-2 in oxLDL-Induced HCAECs Injury

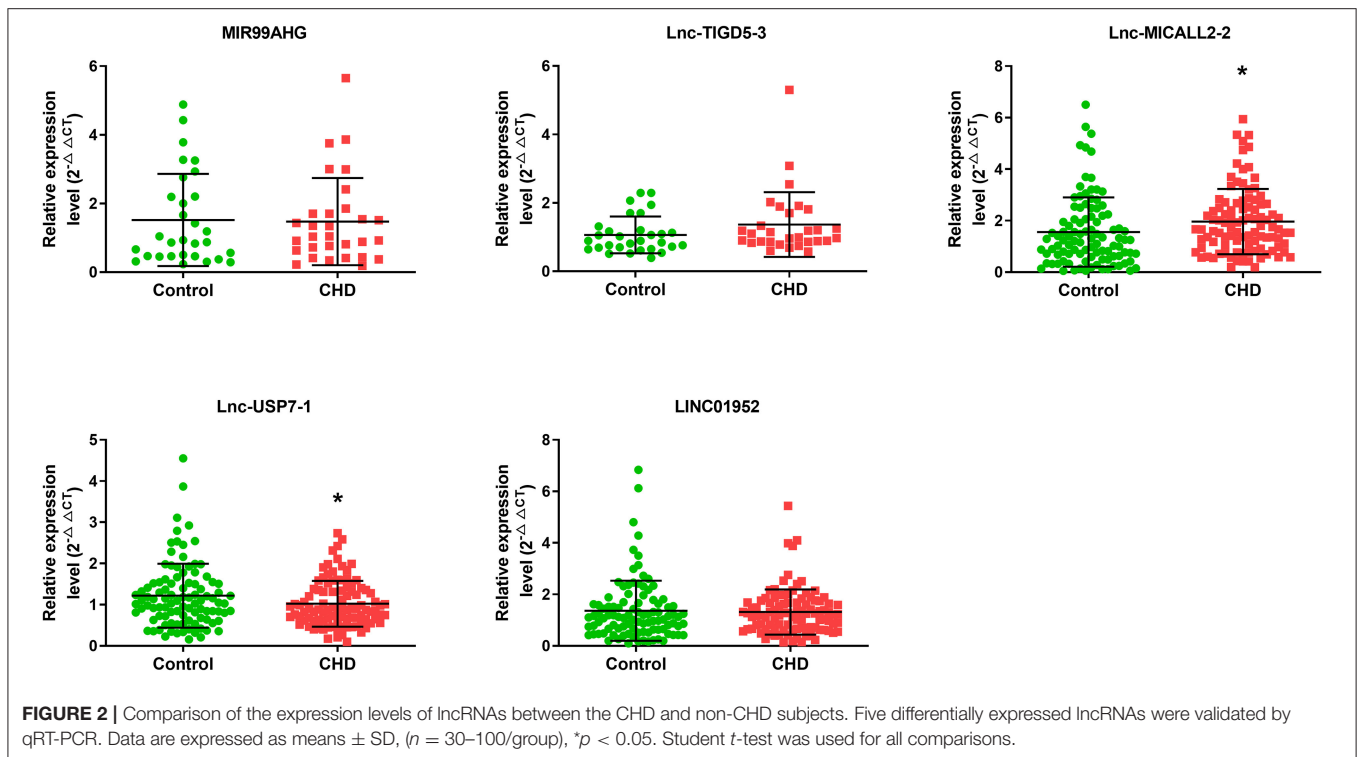
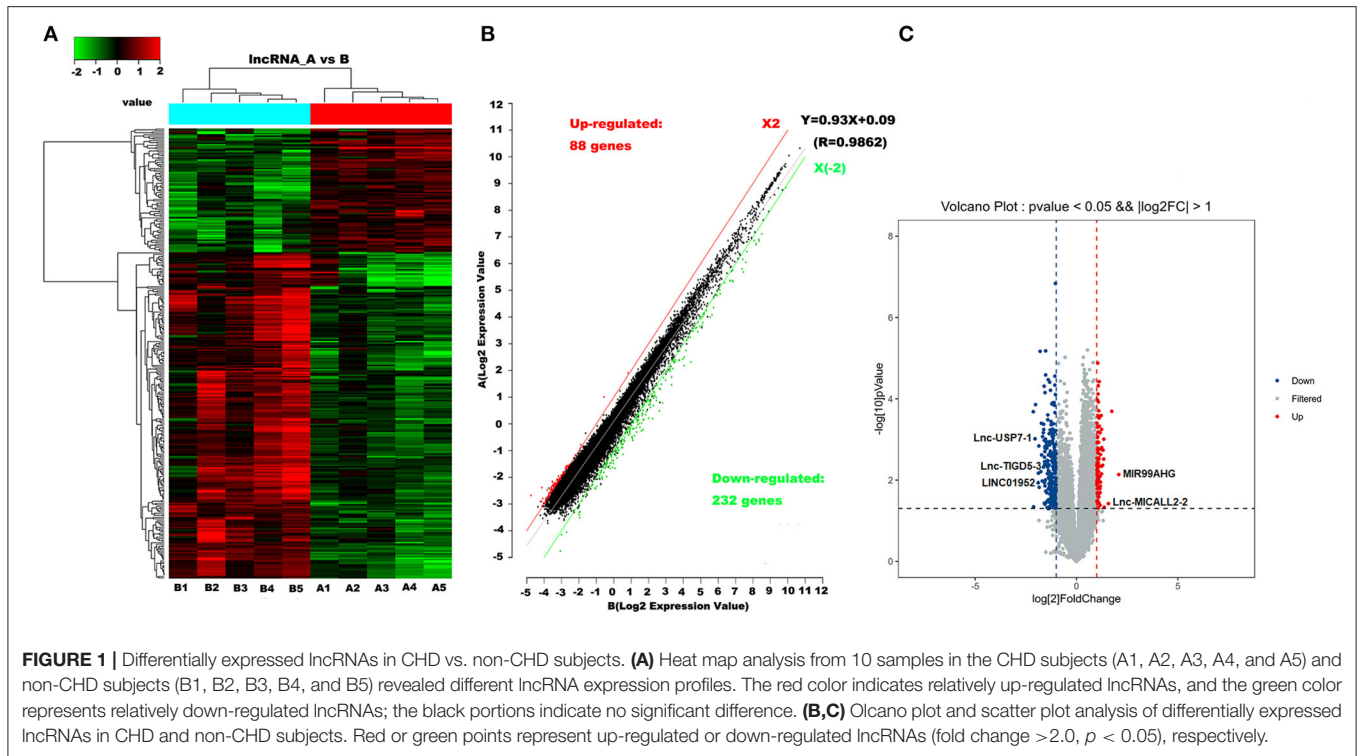
Due to the results of the lncRNA profile of oxLDL-induced HCAECs, which indicated the upregulation of lnc-MICALL2-2, the biological functions of the lncRNA was examined by knockdown with siRNA-3 (**Figure 4A**), which achieved an expression inhibition of  $\sim$ 50%. Consistent with prior results, cells treated with oxLDL observed a marked upregulation of the expression of the lnc-MICALL2-2. However, cells treated with siRNA-3 and oxLDL simultaneously saw normalization of the expression of the lncRNA compared with untreated cells ( $p <$  0.05, **Figure 4B**).

Electron microscopy results revealed that untreated HCAECs nuclei were complete, with intact organelles presenting minimal autophagy. On the other hand, after treatment with 100  $\mu$ g/ml oxLDL, HCAECs showed nuclear lysis, organelle damage and severe autophagy (**Figure 4C**), demonstrated decreased LDH activity (**Figure 4D**), increased proliferation (**Figure 4E**), and decreased apoptosis (**Figures 4F,G**) in the oxLDL + siRNA group, illustrating that inhibition of lnc-MICALL2-2 attenuated the molecular markers of oxLDL injury in HCAECs.

## DISCUSSION

CHD remains one of the leading causes of hospitalization and death worldwide, accounting for 64% of all cardiac deaths in 2009 (32). While the standard CHD medications (statins, antiplatelets, ACE inhibitors, beta blockers, etc.) greatly reduce the risk of complications arising from CHD, side-effects can greatly reduce quality of life (33). Evidence has shown that environmental factors, genomes, and epigenetics play crucial roles in its etiology (27). In this study, we confirmed that the elevated expression of lnc-MICALL2-2 is an independent risk factor for CHD after adjustment for environmental factors, and knockdown subsequently confers protection against early pathological processes of oxLDL-induced CHD.

The frequency of environmental characteristics observed in the CHD disease group recruited in this study were consistent with known CHD risk factors (family history, tobacco, moderate to severe anxiety, sedentary work environment, above average BMI) (34–38). This along with strict inclusion/exclusion criteria provided confidence that the group enrolled was representative of general CHD populations and provided evidence that controls were characteristically distinct from the disease group. Additionally, demographic profiling ensured that potentially confounding factors such as age, sex, or education level were equilibrated among the CHD and control groups. Though carried out in a relatively minute population of CHD patients, the discovery microarray reliably identified 320 differentially expressed lncRNAs in the disease group, providing a large



pool of candidates for further study. After filtering the 320 lncRNAs, five were selected for validation due to fold change thresholds and predicted biological roles. Existing studies

have shown that CHD is a chronic inflammatory disease. Inflammatory response plays an important role in the formation and development of atherosclerotic plaques and plaque rupture,

**TABLE 2** | Multivariable logistic regression analyses for the association between lncRNAs and CHD.

Variable	Model-1 <sup>a</sup> OR (95% CI)	Model-2 <sup>b</sup> OR (95% CI)
lnc-USP7-1	0.543 (0.332–0.890)	0.513 (0.295–0.891)
lnc-MICALL2-2	1.374 (1.080–1.747)	1.489 (1.077–2.057)

CHD, coronary heart disease; OR, odds ratio; CI, confidence interval.

<sup>a</sup>Model-1: adjusted for age, gender, marital status, and education level.

<sup>b</sup>Model-2: adjusted for family history of CHD, high-salt diet, smoking, labor intensity, BMI, and the variables in Model-1.

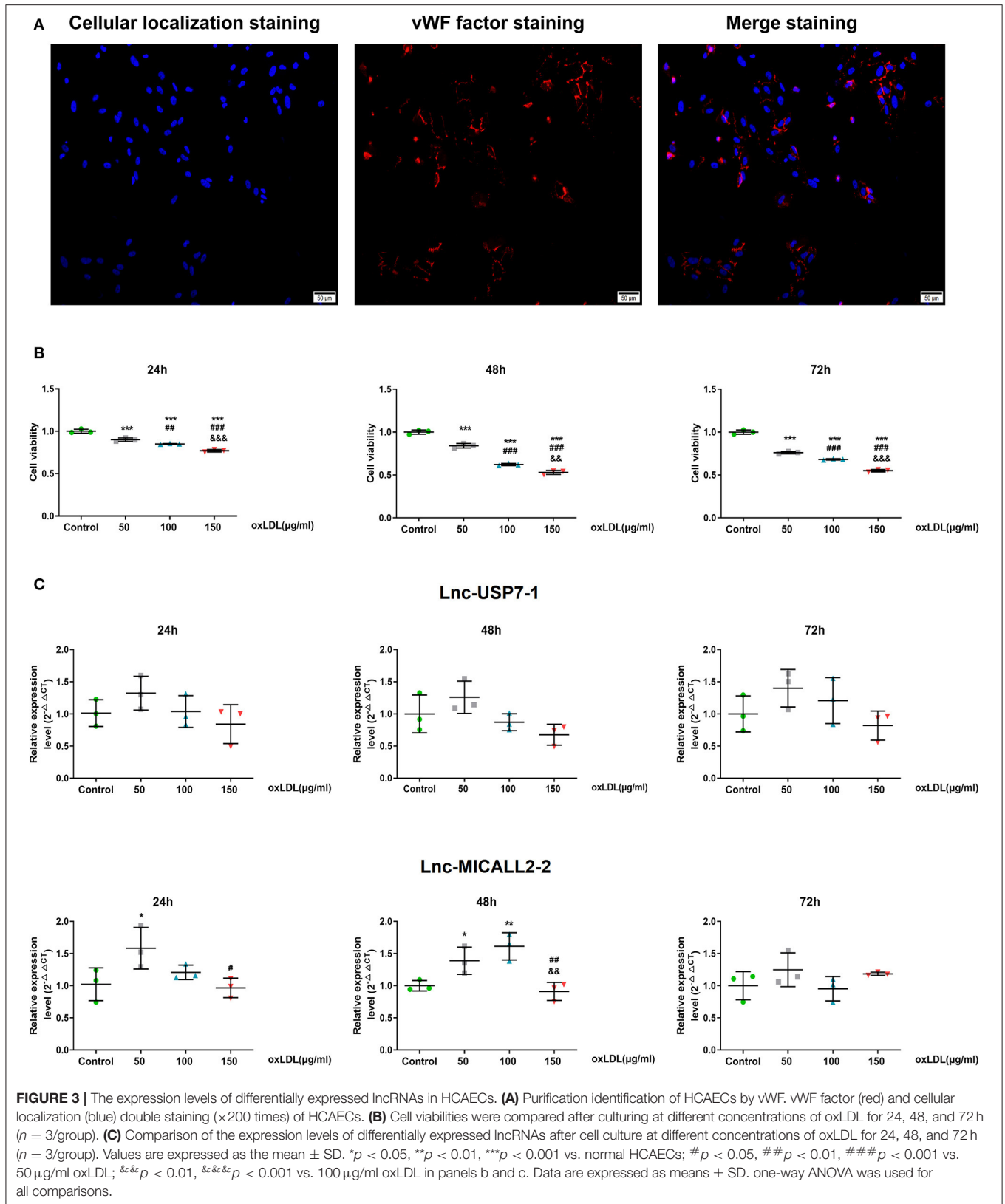
and is one of the pathogenesis of CHD. The vascular inflammatory response involves complex interaction between leukocytes, endothelial cells (ECs), VSMCs, and extracellular matrix. Vascular injury is associated with increased expression of adhesion molecules by ECs and recruitment of leukocytes, growth factors, and cytokines (39). It has also been found that changes in the proportion of leukocytes in the blood in disease states can confound the aberrantly expressed signals observed in mixed-cell blood samples (40). Therefore, in this study, only comparative representative peripheral blood leukocytes were selected for lncRNA detection. Of these five, however, only two were consistent with the discovery array results. The lnc-USP7-1 was downregulated in CHD patients while lnc-MICALL2-2 was upregulated, even after adjusting for environmental factors. The implications of these findings were that these lncRNAs are strong candidates for CHD etiology and/or progression in CHD cohorts. In turn, these may be useful for diagnostic or therapeutic approaches in the future, though this work is novel and preliminary. In this study, results supported the hypothesis that novel lncRNAs are abnormally regulated in CHD patients. These findings are also consistent with the role of lncRNAs in VECs development and dysfunction (9, 14).

Oxidized lipid metabolites can activate platelet cascades and trigger thromboinflammatory factor release. Specifically, oxLDL binding of scavenger receptors on platelets can lead to production of reactive oxygen species, macrophage activation, and apoptosis. Further, platelet activation can induce chemokines which can promote inflammation and a pro-thrombotic microenvironment (41). While the dominant use of oxLDL *in vitro* has been used to establish models of atherosclerosis, considerable evidence has shown the successful induction of pre-atherosclerotic HCAECs dysfunction, death, and pathological neovascularization, even at low concentrations (42). Additional evidence for the involvement of oxLDL injury in CHD comes from the identification of serum oxLDL as a risk factor during early stage CHD in humans (43). Similarly, high serum levels of oxLDL receptor 1 have been associated with adverse events in patients with stable CHD (44) and in persons with high-calculated CHD risk prior to adverse events (45). Collectively, evidence substantiates the role of oxLDL challenge in the pathological transformation of VECs during the early etiology of CHD. In this study, it was further found that knockdown of the expression of lnc-MICALL2-2 *in vitro* attenuated the VECs damage caused by oxLDL,

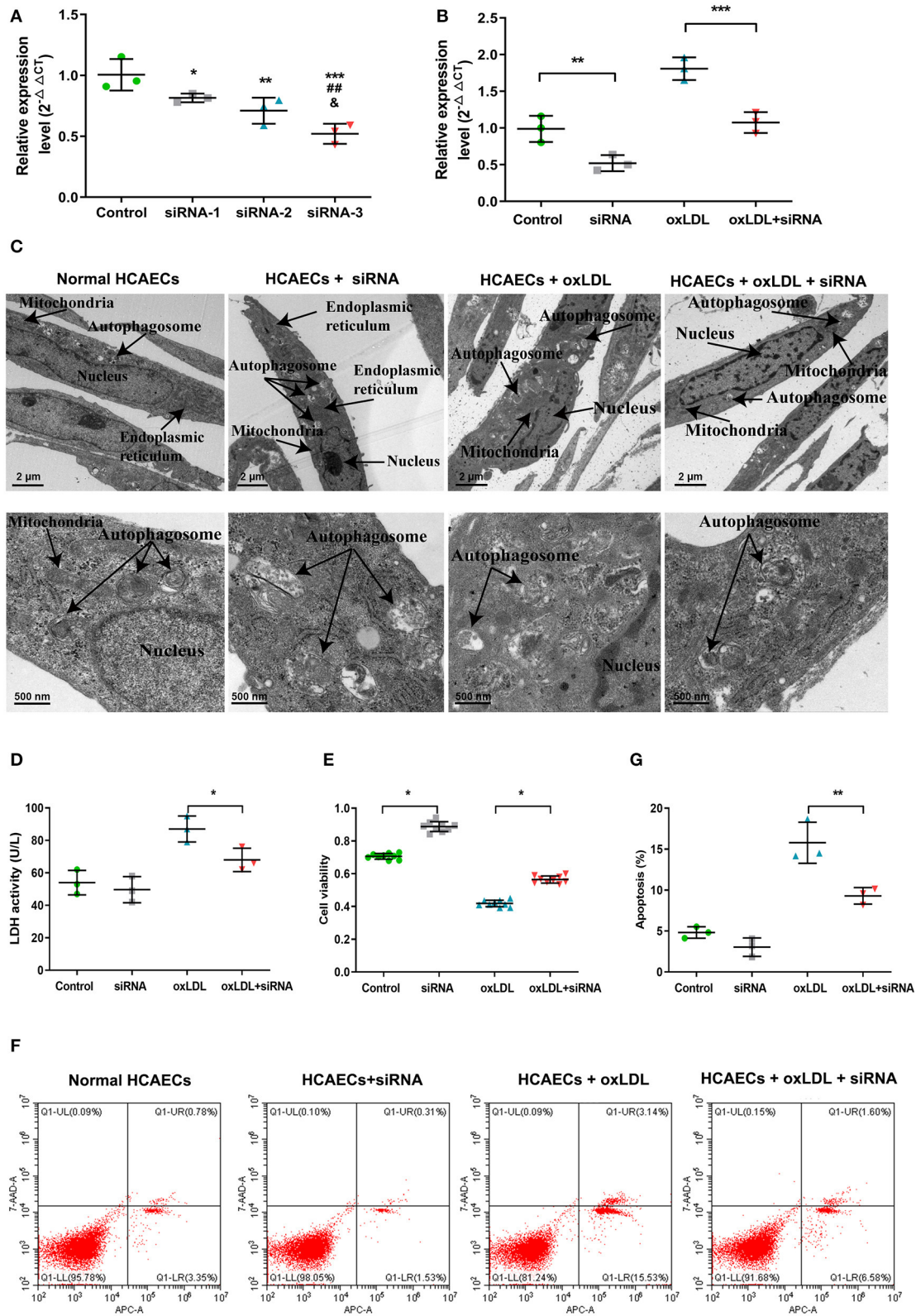
providing preliminary evidence for the role of a novel epigenetic target in the etiology of oxLDL-mediated CHD. Results from microarray assessments, population validation, and *in vitro* manipulation suggest that lnc-MICALL2-2 is not only a correlate of CHD development, but likely an influential factor in the etiology of the disease. In our previous bioinformatics analysis, lnc-MICALL2-2-related target genes were closely related to cell adhesion junction, cadherin binding involved in cell adhesion, and focal adhesion signaling pathway is one of the top 10 highest signaling pathways (28), which is strongly associated with CHD (46).

VECs dysfunction is considered an early pathological process of CHD (17). Many findings have suggested that induction with different concentrations of ox-LDL (30–200 µg/ml) can cause inflammatory injury in HCAECs and produce an atherosclerotic phenotype, accompanied by increased expression levels of related inflammatory factors such as interleukin 6 (IL-6), IL-8 and tumor necrosis factor alpha (TNF-α) (26, 47, 48). Previous studies have shown that lncRNAs can be directly involved in the differentiation and proliferation of VECs or affect the VECs involved in immune regulation (49, 50). Notably, in this study inhibition of the lnc-MICALL2-2 significantly increased cell viability compared to normal cultured cells. Further, knockdown of lnc-MICALL2-2 in cells undergoing oxLDL challenge demonstrated improved viability, indicating that inhibition of the lncRNA not only increases HCAECs viability in general but attenuates the effect of oxLDL challenge on cell proliferation. This is in line with previous reports of the effects of oxLDL on HCAECs, which was in that study found to be mediated by the transcriptional repression of FGF2 (19). In addition, inhibition of lnc-MICALL2-2 attenuated oxLDL-induced HCAECs injury and apoptosis, particularly, nuclear lysis, organelle injury, and autophagy. There are many studies on the involvement of lncRNAs in the regulation of ox-LDL-induced apoptosis, and changes in their expression levels can affect the expression of related genes, which are involved in the regulation of the apoptotic process (26, 51, 52). It is foreseeable that the lnc-MICALL2-2 may similarly act on molecular targets that positively regulate oxLDL-induced cell death factors in HCAECs, though this remains to be thoroughly tested.

With mounting support for the use of many lncRNAs as molecular markers and therapeutic targets (53). Our study results showed that low expression of lnc-MICALL2-2 enhanced HCAECs proliferation and suppressed HCAECs apoptosis in an oxLDL-induced model of early CHD, which suggested that the knockdown of lnc-MICALL2-2 may become a future therapeutic approach for oxLDL-related CHD. lncRNAs typically exert their biological functions through interactions with regulatory proteins, miRNAs or other cellular factors (54–57). In our previous population-based research work, preliminary verification of lnc-MICALL2-2 potential ceRNA regulatory network in CHD. Although corresponding functional studies are still lacking, the results of this study further confirm that lnc-MICALL2-2 is indeed closely related to CHD, and deserves in-depth study (28). In addition, the LNCipedia database provides evidence that lnc-MICALL2-2 is







**FIGURE 4 |** The function of knockdown of lnc-MICALL2-2 in oxLDL-induced HCAECs injury. **(A)** lnc-MICALL2-2 interference fragment screening. \* $p < 0.05$ , \*\* $p < 0.01$ , \*\*\* $p < 0.001$  vs. normal HCAECs; ## $p < 0.01$  vs. HCAECs treated with siRNA-1; & $p < 0.05$  vs. HCAECs treated with siRNA-2 ( $n = 3$ /group).

(Continued)

**FIGURE 4 | (B)** Relative expression of lnc-MICALL2-2 in normal HCAECs, HCAECs treated with siRNA, oxLDL, and oxLDL + siRNA. **(C)** HCAECs morphology of different treatment groups under electron microscopic observation ( $n = 3/\text{group}$ ). **(D)** LDH activity in HCAECs culture medium of different treatment groups ( $n = 3/\text{group}$ ). **(E)** HCAECs cell proliferation of different treatment groups activity by Cell Counting Kit-8 detection ( $n = 9/\text{group}$ ). **(F,G)** HCAECs apoptosis of different treatment groups by flow cytometry ( $n = 3/\text{group}$ ). Values are expressed as the mean  $\pm$  SD, \* $p < 0.05$ , \*\* $p < 0.01$ , \*\*\* $p < 0.001$  in **(B,D,E,G)**. One-way ANOVA was used for all comparisons.

not conserved in non-human species. This is consistent with the low conservation of lncRNA sequence, but the relatively high species specificity and tissue specificity (58).

Some limitations of this study include limited biological samples collected for microarray discovery. However, validation was performed in a relatively larger subset of participants, wherein two biologically relevant candidates were identified. Another limitation of this study was that the novel investigation of the lncRNA was performed in a cell model of HCAECs due to the preliminary nature of the investigation. In the future, it would be nice to see additional experiments beyond **Figure 4** characterizing roles of lnc-MICALL2-2 on endothelial phenotypes or oxLDL-induced endothelial dysfunction, including the function of lncRNAs changes in other cell types such as macrophages or VSMCs. For example, are there changes in gene expression of inflammatory cytokines (e.g., TNF alpha) or adhesion molecules (e.g., ICAM-1, VCAM-1) when treating HCAECs with oxLDL or lnc-MICALL2-2 siRNA treatment? Finally, due to the exploratory nature of the study, an inhibitory technique that demonstrated partial repression of the lncRNA was selected for the investigation of the biological roles in an oxLDL model. In the future, targeted inhibition should be carried out in a dose-wise manner, allowing the investigation of the lncRNA at a full range (i.e. complete silencing, 25% expression, etc.) of expression levels.

In summary, elevated expression of lnc-MICALL2-2 is an independent risk factor for CHD, and knockdown subsequently confers protection against early pathological processes of oxLDL-induced CHD. This work presents novel evidence that lnc-MICALL2-2 may play a role in the etiology CHD. These findings lay a preliminary groundwork for a more detailed understanding of the molecular mechanisms of lnc-MICALL2-2 in the future.

## DATA AVAILABILITY STATEMENT

The datasets presented in this study can be found in online repositories. The names of the repository/repositories and accession number(s) can be found at: NCBI [accession: GSE169256].

## REFERENCES

- GBD 2017 Causes of Death Collaborators. Global, regional, and national age-sex-specific mortality for 282 causes of death in 195 countries and territories, 1980-2017: a systematic analysis for the Global Burden of Disease Study 2017. *Lancet*. (2018) 392:1736–88. doi: 10.1016/S0140-6736(18)32203-7
- Huang S, Xie X, Sun Y, Zhang T, Cai Y, Xu X, et al. Development of a nomogram that predicts the risk for coronary atherosclerotic heart disease. *Aging*. (2020) 12:9427–39. doi: 10.18632/aging.103216
- Fan AZ, Ruan WJ, Chou SP. Re-examining the relationship between alcohol consumption and coronary heart disease with a new lens. *Prev Med*. (2019) 118:336–43. doi: 10.1016/j.ypmed.2018.11.022
- Aggio D, Papachristou E, Papacosta O, Lennon LT, Ash S, Whincup P, et al. Trajectories of physical activity from midlife to old age and associations with subsequent cardiovascular disease and all-cause mortality.

## ETHICS STATEMENT

The studies involving human participants were reviewed and approved by Biomedical Research Ethics Committee of Fujian Medical University. The patients/participants provided their written informed consent to participate in this study.

## AUTHOR CONTRIBUTIONS

SW, HL, and SL contributed to the study design and helped to revised the manuscript. YS, SH, CW, and QR involved in writing and review of the manuscript. SH and SL conducted statistical analysis. YS, CW, XX, DW, and GL contributed to data collection and laboratory test. All authors contributed to critical revision of the final manuscript and approved the final version of the manuscript. The financial support and study supervision were provided by SW, HL, and SL.

## FUNDING

This research was funded by Joint Funds for the Innovation of Science and Technology, Fujian Province (2018Y9089), the Natural Science Foundation of Fujian Province (2019J01315), Professor Development Fund Project of Fujian Medical University (JS15002), and Open Project of Fujian Key Laboratory of Environmental Factors and Cancer (GWSZD-201802).

## ACKNOWLEDGMENTS

The authors thank the participants and participating physicians from First Affiliated Hospital of Fujian Medical University and Fujian Medical University Union Hospital, China, as the staff that made this research possible.

## SUPPLEMENTARY MATERIAL

The Supplementary Material for this article can be found online at: <https://www.frontiersin.org/articles/10.3389/fcvm.2021.650212/full#supplementary-material>

- J Epidemiol Commun Health.* (2020) 74:130–6. doi: 10.1136/jech-2019-212706
5. Pogossova N, Kotseva K, De Bacquer D, von Känel R, De Smedt D, Bruthans J, et al. Psychosocial risk factors in relation to other cardiovascular risk factors in coronary heart disease: results from the EUROASPIRE IV survey. A registry from the European Society of Cardiology. *Eur J Prev Cardiol.* (2017) 24:1371–80. doi: 10.1177/2047487317711334
  6. Huan T, Rong J, Tanriverdi K, Meng Q, Bhattacharya A, McManus DD, et al. Dissecting the roles of microRNAs in coronary heart disease via integrative genomic analyses. *Arterioscler Thromb Vasc Biol.* (2015) 35:1011–21. doi: 10.1161/ATVBAHA.114.305176
  7. Vilades D, Martínez-Cambor P, Ferrero-Gregori A, Bär C, Lu D, Xiao K, et al. Plasma circular RNA hsa\_circ\_0001445 and coronary artery disease: performance as a biomarker. *FASEB J.* (2020) 34:4403–14. doi: 10.1096/fj.201902507R
  8. Das S, Reddy MA, Natarajan R. Role of epigenetic mechanisms regulated by enhancers and long noncoding RNAs in cardiovascular disease. *Curr Opin Cardiol.* (2020) 35:234–41. doi: 10.1097/HCO.0000000000000728
  9. Matkovich SJ, Edwards JR, Grossenheider TC, de Guzman Strong C, Dorn GW 2nd. Epigenetic coordination of embryonic heart transcription by dynamically regulated long noncoding RNAs. *Proc Natl Acad Sci USA.* (2014) 111:12264–9. doi: 10.1073/pnas.1410622111
  10. Dorn GW 2nd, Matkovich SJ. Epitranscriptional regulation of cardiovascular development and disease. *J Physiol.* (2015) 593:1799–808. doi: 10.1113/jphysiol.2014.283234
  11. Chen HH, Almontashiri NA, Antoine D, Stewart AF. Functional genomics of the 9p21.3 locus for atherosclerosis: clarity or confusion?. *Curr Cardiol Rep.* (2014) 16:502. doi: 10.1007/s11886-014-0502-7
  12. Ishii N, Ozaki K, Sato H, Mizuno H, Susumu S, Takahashi A. Identification of a novel non-coding RNA, MIAT, that confers risk of myocardial infarction. *J Hum Genet.* (2006) 51:1087–99. doi: 10.1007/s10038-006-0070-9
  13. Uchida S, Dimmeler S. Long noncoding RNAs in cardiovascular diseases. *Circ Res.* (2015) 116:737–50. doi: 10.1161/CIRCRESAHA.116.302521
  14. Zhu Y, Yang T, Duan J, Mu N, Zhang T. MALAT1/miR-15b-5p/MAPK1 mediates endothelial progenitor cells autophagy and affects coronary atherosclerotic heart disease via mTOR signaling pathway. *Aging.* (2019) 11:1089–109. doi: 10.18632/aging.101766
  15. Muret K, Désert C, Lagoutte L, Boutin M, Gondret F, Zerjal T, et al. Long noncoding RNAs in lipid metabolism: literature review and conservation analysis across species. *BMC Genomics.* (2019) 20:882. doi: 10.1186/s12864-019-6093-3
  16. Zhang L, Zhou C, Qin Q, Liu Z, Li P. LncRNA LEF1-AS1 regulates the migration and proliferation of vascular smooth muscle cells by targeting miR-544a/PTEN axis. *J Cell Biochem.* (2019) 120:14670–8. doi: 10.1002/jcb.28728
  17. Nabel EG, Braunwald E. A tale of coronary artery disease and myocardial infarction. *N Engl J Med.* (2012) 366:54–63. doi: 10.1056/NEJMr1112570
  18. Huang S, Lu W, Ge D, Meng N, Li Y, Su L, et al. A new microRNA signal pathway regulated by long noncoding RNA TGFB2-OT1 in autophagy and inflammation of vascular endothelial cells. *Autophagy.* (2015) 11:2172–83. doi: 10.1080/15548627.2015.1106663
  19. Yang TC, Chen YJ, Chang SF, Chen CH, Chang PY, Lu SC. Malondialdehyde mediates oxidized LDL-induced coronary toxicity through the Akt-FGF2 pathway via DNA methylation. *J Biomed Sci.* (2014) 21:11. doi: 10.1186/1423-0127-21-11
  20. Ou HC, Lee WJ, Lee IT, Chiu TH, Tsai KL, Lin CY, et al. Ginkgo biloba extract attenuates oxLDL-induced oxidative functional damages in endothelial cells. *J Appl Physiol.* (2009) 106:1674–85. doi: 10.1152/jappphysiol.91415.2008
  21. Che J, Liang B, Zhang Y, Wang Y, Tang J, Shi G. Kaempferol alleviates ox-LDL-induced apoptosis by up-regulation of autophagy via inhibiting PI3K/Akt/mTOR pathway in human endothelial cells. *Cardiovasc Pathol.* (2017) 31:57–62. doi: 10.1016/j.carpath.2017.08.001
  22. Han QA, Yan C, Wang L, Li G, Xu Y, Xia X. Urolithin A attenuates ox-LDL-induced endothelial dysfunction partly by modulating microRNA-27 and ERK/PPAR- $\gamma$  pathway. *Mol Nutr Food Res.* (2016) 60:1933–43. doi: 10.1002/mnfr.201500827
  23. Singh KK, Matkar PN, Pan Y, Quan A, Gupta V, Teoh H, et al. Endothelial long non-coding RNAs regulated by oxidized LDL. *Mol Cell Biochem.* (2017) 431:139–49. doi: 10.1007/s11010-017-2984-2
  24. Xu M, Qi Q, Men L, Wang S, Li M, Xiao M, et al. Berberine protects Kawasaki disease-induced human coronary artery endothelial cells dysfunction by inhibiting of oxidative and endoplasmic reticulum stress. *Vascul Pharmacol.* (2020) 127:106660. doi: 10.1016/j.vph.2020.106660
  25. Li P, Wang J, Zhao X, Ru J, Tian T, An Y, et al. PTEN inhibition attenuates endothelial cell apoptosis in coronary heart disease via modulating the AMPK-CREB-Mfn2-mitophagy signaling pathway. *J Cell Physiol.* (2020) 235:4878–89. doi: 10.1002/jcp.29366
  26. Li S, Sun Y, Zhong L, Xiao Z, Yang M, Chen M, et al. The suppression of ox-LDL-induced inflammatory cytokine release and apoptosis of HCAECs by long non-coding RNA-MALAT1 via regulating microRNA-155/SOCS1 pathway. *Nutr Metab Cardiovasc Dis.* (2018) 28:1175–87. doi: 10.1016/j.numecd.2018.06.017
  27. Sun Y, Chen R, Lin S, Xie X, Ye H, Zheng F, et al. Association of circular RNAs and environmental risk factors with coronary heart disease. *BMC Cardiovasc Disord.* (2019) 19:223. doi: 10.1186/s12872-019-1191-3
  28. Sun Y, Lin J, Huang S, Xu X, Cai Y, Yang L, et al. Preliminary verification of lncRNA ENST00000609755.1 potential ceRNA regulatory network in coronary heart disease. *Int J Cardiol.* (2021) 328:165–75. doi: 10.1016/j.ijcard.2020.11.064
  29. Noone DG, Riedl M, Pluthero FG, Bowman ML, Liszewski MK, Lu L, et al. Von Willebrand factor regulates complement on endothelial cells. *Kidney Int.* (2016) 90:123–34. doi: 10.1016/j.kint.2016.03.023
  30. Weinbrenner T, Cladellas M, Isabel Covas M, Fitó M, Tomás M, Sentí M, et al. High oxidative stress in patients with stable coronary heart disease. *Atherosclerosis.* (2003) 168:99–106. doi: 10.1016/S0021-9150(03)00053-4
  31. Lai P, Liu Y. Echinocystic acid, isolated from *Gleditsia sinensis* fruit, protects endothelial progenitor cells from damage caused by oxLDL via the Akt/eNOS pathway. *Life Sci.* (2014) 114:62–9. doi: 10.1016/j.lfs.2014.07.026
  32. Go AS, Mozaffarian D, Roger VL, Benjamin EJ, Berry JD, Borden WB, et al. Heart disease and stroke statistics—2013 update: a report from the American Heart Association. *Circulation.* (2013) 127:e6–245. doi: 10.1161/CIR.0b013e31828124ad
  33. Jain KK. Personalized management of cardiovascular disorders. *Med Princ Pract.* (2017) 26:399–414. doi: 10.1159/000481403
  34. Wang J, Tillin T, Hughes AD, Chaturvedi N. Associations between family history and coronary artery calcium and coronary heart disease in British Europeans and South Asians. *Int J Cardiol.* (2020) 300:39–42. doi: 10.1016/j.ijcard.2019.07.101
  35. Tang R, Yang S, Liu W, Yang B, Wang S, Yang Z, et al. Smoking is a risk factor of coronary heart disease through HDL-C in Chinese T2DM patients: a mediation analysis. *J Healthc Eng.* (2020) 2020:8876812. doi: 10.1155/2020/8876812
  36. Karlsen HR, Saksvik-Lehouillier I, Stone KL, Schernhammer E, Yaffe K, Langvik E. Anxiety as a risk factor for cardiovascular disease independent of depression: a prospective examination of community-dwelling men (the MrOS study). *Psychol Health.* (2021) 36:148–63. doi: 10.1080/08870446.2020.1779273
  37. Arsenault BJ, Rana JS, Lemieux I, Després JP, Kastelein JJ, Boekholdt SM, et al. Physical inactivity, abdominal obesity and risk of coronary heart disease in apparently healthy men and women. *Int J Obes.* (2010) 34:340–7. doi: 10.1038/ijo.2009.229
  38. Sieri S, Agnoli C, Grioni S, Weiderpass E, Mattiello A, Sluijs I, et al. Glycemic index, glycemic load, and risk of coronary heart disease: a pan-European cohort study. *Am J Clin Nutr.* (2020) 112:631–43. doi: 10.1093/ajcn/nqaa157
  39. Sprague AH, Khalil RA. Inflammatory cytokines in vascular dysfunction and vascular disease. *Biochem Pharmacol.* (2009) 78:539–52. doi: 10.1016/j.bcp.2009.04.029
  40. Li H, Hong G, Lin M, Shi Y, Wang L, Jiang F, et al. Identification of molecular alterations in leukocytes from gene expression profiles of peripheral whole blood of Alzheimer's disease. *Sci Rep.* (2017) 7:14027. doi: 10.1038/s41598-017-13700-w
  41. Chatterjee M, Rath D, Schlotterbeck J, Rheinlaender J, Walker-Allgaier B, Alnaggar N, et al. Regulation of oxidized platelet lipidome:

- implications for coronary artery disease. *Eur Heart J.* (2017) 38:1993–2005. doi: 10.1093/eurheartj/ehx146
42. Valente AJ, Irimpen AM, Siebenlist U, Chandrasekar B. OxLDL induces endothelial dysfunction and death via TRAF3IP2: inhibition by HDL3 and AMPK activators. *Free Radic Biol Med.* (2014) 70:117–28. doi: 10.1016/j.freeradbiomed.2014.02.014
  43. Zhang Q, Ai Y, Dong H, Wang J, Xu L. Circulating oxidized low-density lipoprotein is a strong risk factor for the early stage of coronary heart disease. *IUBMB Life.* (2019) 71:277–82. doi: 10.1002/iub.1966
  44. Zhao ZW, Xu YW, Li SM, Guo JJ, Yi T, Chen LL. Higher serum lectin-like oxidized low-density lipoprotein receptor-1 in patients with stable coronary artery disease is associated with major adverse cardiovascular events: a multicentre pilot study. *Biochem Med.* (2019) 29:010705. doi: 10.11613/BM.2019.010705
  45. Holvoet P. Oxidized LDL and coronary heart disease. *Acta Cardiol.* (2004) 59:479–84. doi: 10.2143/AC.59.5.2005219
  46. Shai I, Pischon T, Hu FB, Ascherio A, Rifai N, Rimm EB. Soluble intercellular adhesion molecules, soluble vascular cell adhesion molecules, and risk of coronary heart disease. *Obesity.* (2006) 14:2099–106. doi: 10.1038/oby.2006.245
  47. Zhou Q, Run Q, Li CY, Xiong XY, Wu XL. LncRNA MALAT1 promotes STAT3-mediated endothelial inflammation by counteracting the function of miR-590. *Cytogenet Genome Res.* (2020) 160:565–78. doi: 10.1159/000509811
  48. Zhang Z, Jiang F, Zeng L, Wang X, Tu S. PHACTR1 regulates oxidative stress and inflammation to coronary artery endothelial cells via interaction with NF- $\kappa$ B/p65. *Atherosclerosis.* (2018) 278:180–9. doi: 10.1016/j.atherosclerosis.2018.08.041
  49. Liao B, Chen R, Lin F, Mai A, Chen J, Li H, et al. Long noncoding RNA HOTTIP promotes endothelial cell proliferation and migration via activation of the Wnt/ $\beta$ -catenin pathway. *J Cell Biochem.* (2018) 119:2797–805. doi: 10.1002/jcb.26448
  50. Schonrock N, Harvey RP, Mattick JS. Long noncoding RNAs in cardiac development and pathophysiology. *Circ Res.* (2012) 111:1349–62. doi: 10.1161/CIRCRESAHA.112.268953
  51. Menghini R, Casagrande V, Marino A, Marchetti V, Cardellini M, Stoeckl R, et al. MiR-216a: a link between endothelial dysfunction and autophagy. *Cell Death Dis.* (2014) 5:e1029. doi: 10.1038/cddis.2013.556
  52. Zhou T, Chen X. Long intergenic noncoding RNA p21 mediates oxidized LDL-induced apoptosis and expression of LOX-1 in human coronary artery endothelial cells. *Mol Med Rep.* (2017) 16:8513–9. doi: 10.3892/mmr.2017.7623
  53. Esmaeili M, Keshani M, Vakilian M, Esmaeili M, Peymani M, Seyed Foroootan F, et al. Role of non-coding RNAs as novel biomarkers for detection of colorectal cancer progression through interaction with the cell signaling pathways. *Gene.* (2020) 753:144796. doi: 10.1016/j.gene.2020.144796
  54. Beermann J, Piccoli MT, Viereck J, Thum T. Non-coding RNAs in development and disease: background, mechanisms, therapeutic approaches. *Physiol Rev.* (2016) 96:1297–325. doi: 10.1152/physrev.00041.2015
  55. Tay Y, Rinn J, Pandolfi PP. The multilayered complexity of ceRNA crosstalk and competition. *Nature.* (2014) 505:344–52. doi: 10.1038/nature12986
  56. Jing S, Tian J, Zhang Y, Chen X, Zheng S. Identification of a new pseudogenes/lncRNAs-hsa-miR-26b-5p-COL12A1 competing endogenous RNA network associated with prognosis of pancreatic cancer using bioinformatics analysis. *Aging.* (2020) 12:19107–28. doi: 10.18632/aging.103709
  57. Chen X, Wang J, Xie F, Mou T, Zhong P, Hua H, et al. Long noncoding RNA LINC01559 promotes pancreatic cancer progression by acting as a competing endogenous RNA of miR-1343-3p to upregulate RAF1 expression. *Aging.* (2020) 12:14452–66. doi: 10.18632/aging.103487
  58. Raut SK, Khullar M. The big entity of new RNA world: long non-coding RNAs in microvascular complications of diabetes. *Front Endocrinol.* (2018) 9:300. doi: 10.3389/fendo.2018.00300

**Conflict of Interest:** The authors declare that the research was conducted in the absence of any commercial or financial relationships that could be construed as a potential conflict of interest.

Copyright © 2021 Sun, Huang, Wan, Ruan, Xie, Wei, Li, Lin, Li and Wu. This is an open-access article distributed under the terms of the Creative Commons Attribution License (CC BY). The use, distribution or reproduction in other forums is permitted, provided the original author(s) and the copyright owner(s) are credited and that the original publication in this journal is cited, in accordance with accepted academic practice. No use, distribution or reproduction is permitted which does not comply with these terms.