



OPEN ACCESS

EDITED AND REVIEWED BY

Arif Gulzar,
University of Queensland, Australia

*CORRESPONDENCE

Chen Wang,
✉ wangchen88@gxmu.edu.cn
Litu Zhang,
✉ zhanglitu@gmail.com

RECEIVED 22 August 2023

ACCEPTED 08 September 2023

PUBLISHED 19 September 2023

CITATION

Liang X, Xu W, Li S, Kurboniyon MS, Huang K, Xu G, Wei W, Ning S, Zhang L and Wang C (2023), Corrigendum: Tailoring mSiO₂-SmCo_x nanoplatfoms for magnetic/photothermal effect-induced hyperthermia therapy. *Front. Bioeng. Biotechnol.* 11:1281270. doi: 10.3389/fbioe.2023.1281270

COPYRIGHT

© 2023 Liang, Xu, Li, Kurboniyon, Huang, Xu, Wei, Ning, Zhang and Wang. This is an open-access article distributed under the terms of the [Creative Commons Attribution License \(CC BY\)](https://creativecommons.org/licenses/by/4.0/). The use, distribution or reproduction in other forums is permitted, provided the original author(s) and the copyright owner(s) are credited and that the original publication in this journal is cited, in accordance with accepted academic practice. No use, distribution or reproduction is permitted which does not comply with these terms.

Corrigendum: Tailoring mSiO₂-SmCo_x nanoplatfoms for magnetic/photothermal effect-induced hyperthermia therapy

Xinqiang Liang¹, Wenting Xu¹, Siyi Li², Mekhrdod S. Kurboniyon³, Kunying Huang¹, Guilan Xu¹, Wene Wei¹, Shufang Ning¹, Litu Zhang^{1*} and Chen Wang^{1*}

¹Department of Research, Guangxi Medical University Cancer Hospital, Nanning, China, ²College of Material Sciences and Chemical Engineering, Harbin Engineering University, Harbin, China, ³National Academy of Sciences of Tajikistan, Dushanbe, Tajikistan

KEYWORDS

magnetic effect, photothermal effect, permanent magnet, mSiO₂, tumor therapy

A Corrigendum on

Tailoring mSiO₂-SmCo_x nanoplatfoms for magnetic/photothermal effect-induced hyperthermia therapy

by Liang X, Xu W, Li S, Kurboniyon MS, Huang K, Xu G, Wei W, Ning S, Zhang L and Wang C (2023). *Front. Bioeng. Biotechnol.* 11:1249775. doi: 10.3389/fbioe.2023.1249775

In the published article, there was an error in [Figure 5D](#), [6F](#) as published. The corrected [Figure 5D](#), [6F](#) and its caption appear below.

The authors apologize for this error and state that this does not change the scientific conclusions of the article in any way. The original article has been updated.

Publisher's note

All claims expressed in this article are solely those of the authors and do not necessarily represent those of their affiliated organizations, or those of the publisher, the editors and the reviewers. Any product that may be evaluated in this article, or claim that may be made by its manufacturer, is not guaranteed or endorsed by the publisher.

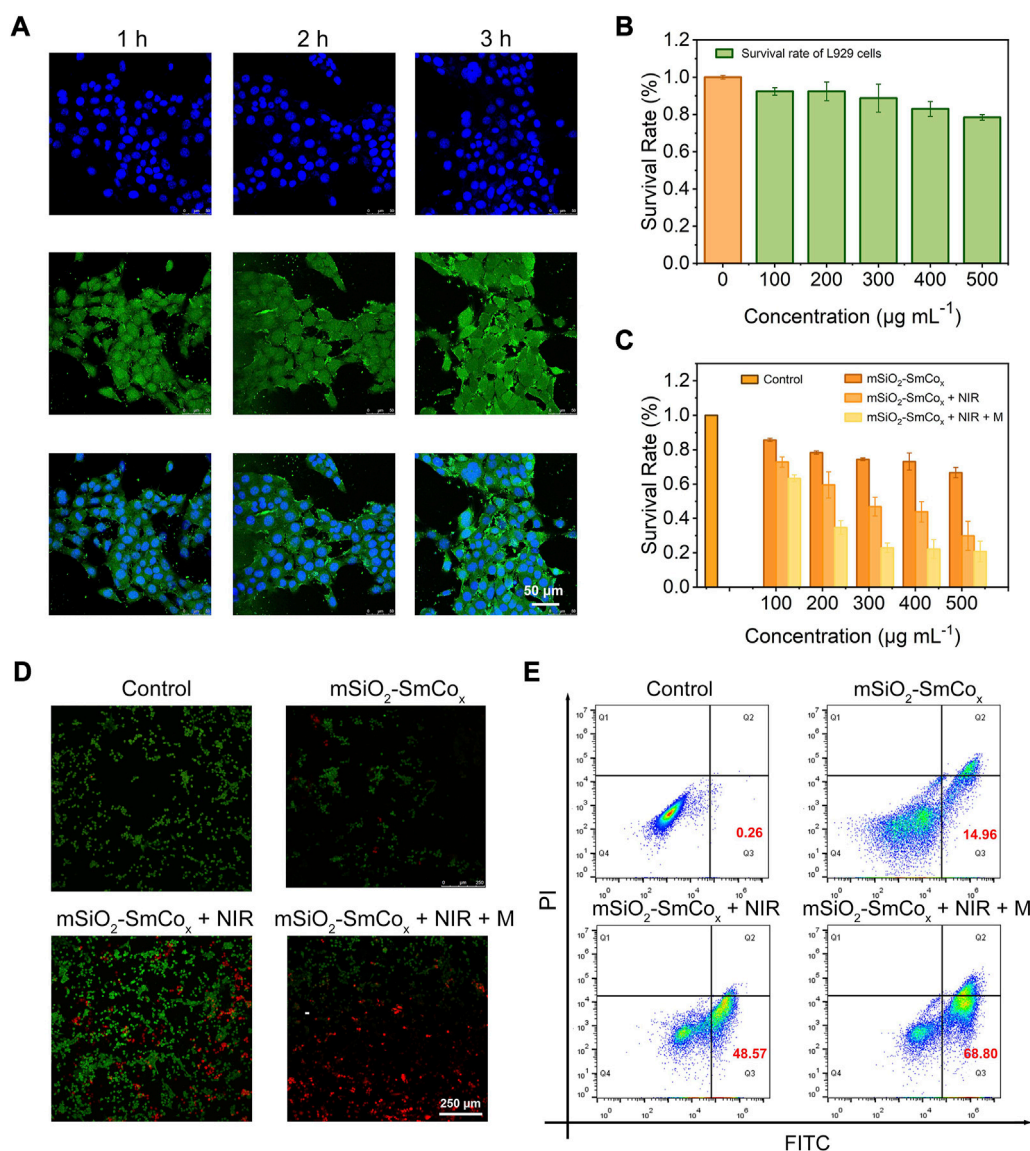


FIGURE 5

(A) CLSM images of 4T1 cells after coincubation with mSiO₂-SmCo_x (Sm/Co = 1:2) NPs for 1, 2, and 3 h (B) The survival rate of L929 cells after coincubation with mSiO₂-SmCo_x (Sm/Co = 1:2) NPs under different concentrations (100, 200, 300, 400, and 500 μg mL⁻¹). (C) The survival rate of 4T1 cells after coincubation with mSiO₂-SmCo_x (Sm/Co = 1:2) NPs, mSiO₂-SmCo_x (Sm/Co = 1:2) NPs + NIR, mSiO₂-SmCo_x (Sm/Co = 1:2) NPs + NIR + M groups under different concentrations (100, 200, 300, 400, and 500 μg mL⁻¹). (D) AM/PI staining of 4T1 cells after different treatments. (E) Flow cytometry results of 4T1 cells after different treatments.

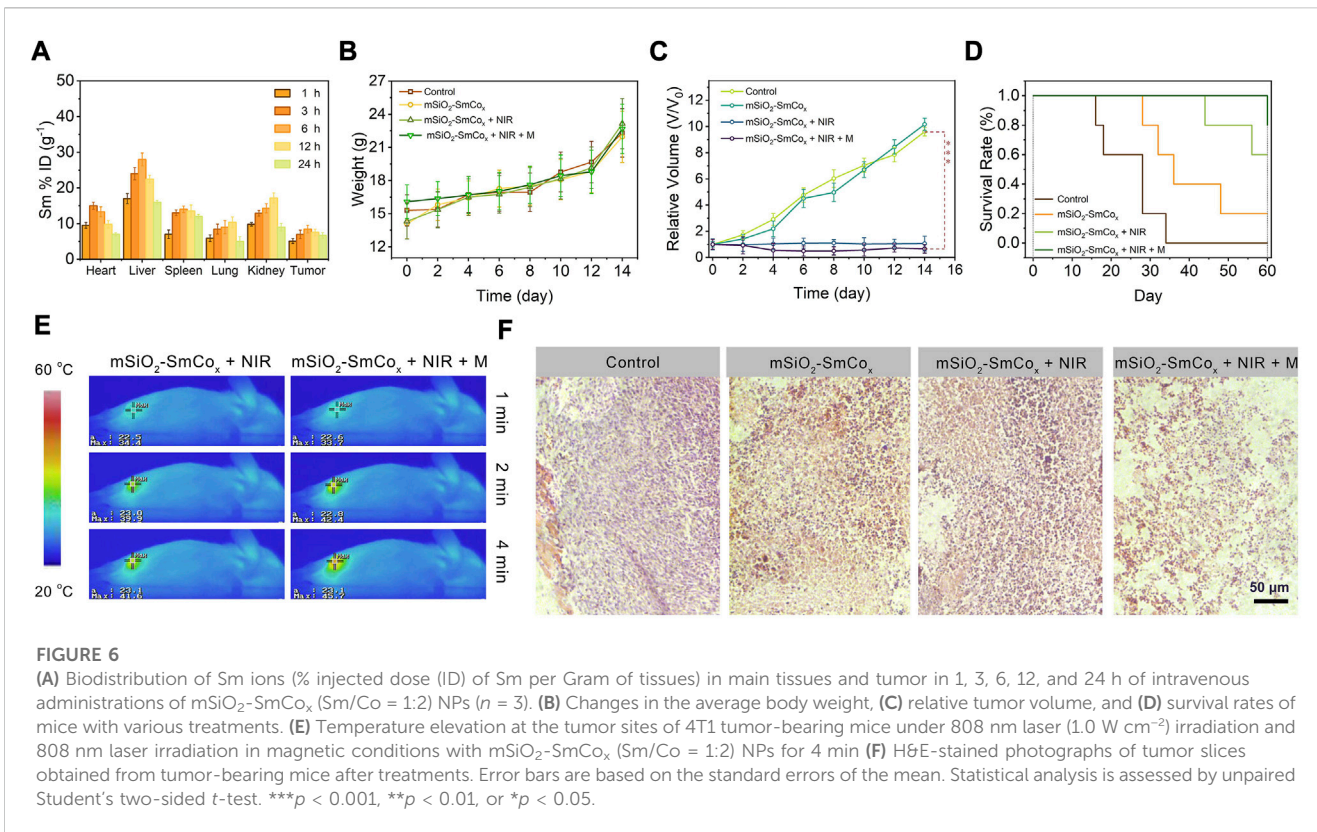


FIGURE 6

(A) Biodistribution of Sm ions (% injected dose (ID) of Sm per Gram of tissues) in main tissues and tumor in 1, 3, 6, 12, and 24 h of intravenous administrations of mSiO₂-SmCo_x (Sm/Co = 1:2) NPs (n = 3). (B) Changes in the average body weight, (C) relative tumor volume, and (D) survival rates of mice with various treatments. (E) Temperature elevation at the tumor sites of 4T1 tumor-bearing mice under 808 nm laser (1.0 W cm⁻²) irradiation and 808 nm laser irradiation in magnetic conditions with mSiO₂-SmCo_x (Sm/Co = 1:2) NPs for 4 min (F) H&E-stained photographs of tumor slices obtained from tumor-bearing mice after treatments. Error bars are based on the standard errors of the mean. Statistical analysis is assessed by unpaired Student's two-sided *t*-test. ****p* < 0.001, ***p* < 0.01, or **p* < 0.05.