



OPEN ACCESS

EDITED BY

Sanjay Vashee,
J. Craig Venter Institute, United States

REVIEWED BY

Yu Cai,
Temasek Life Sciences Laboratory,
Singapore
Feng Wang,
Southwest University, China

*CORRESPONDENCE

Luke Alphey,
✉ luke.alphey@york.ac.uk

†PRESENT ADDRESSES

Ray Wilson,

The Department of Biology, University of York, York,
United Kingdom

Michelle A. E. Anderson,

The Department of Biology, University of York, York,
United Kingdom

Luke Alphey,

The Department of Biology, University of York, York,
United Kingdom

Vishaal Dhokiya,

Department of Vector Biology, Department of Tropical
Disease Biology, Liverpool School of Tropical Medicine,
Liverpool, United Kingdom

Sara Rooney,

Department of Vector Biology, Department of Tropical
Disease Biology, Liverpool School of Tropical Medicine,
Liverpool, United Kingdom

Elizabeth Keen,

School of Natural and Environmental Sciences, Newcastle
University, Newcastle upon Tyne, United Kingdom

Piotr Cuber,

Molecular Laboratories, Core Research Laboratories,
Natural History Museum, London, United Kingdom

Will Larner,

School of Live Sciences, University of Warwick, Coventry,
United Kingdom

Anastasia Uglow,

Forest Research, Farnham, United Kingdom

Luke Williams,

Animal and Plant Health Agency, Addlestone,
United Kingdom

Sanjay Basu,

Molecular Biology Team, R&D Division, Oxford,
United Kingdom

Philip T. Leftwich,

School of Biological Sciences, University of East Anglia,
Norwich, United Kingdom

RECEIVED 07 July 2023

ACCEPTED 31 August 2023

PUBLISHED 22 September 2023

CITATION

Carabajal Paladino LZ, Wilson R, Tng PYL,
Dhokiya V, Keen E, Cuber P, Larner W,
Rooney S, Nicholls M, Uglow A,
Williams L, Anderson MAE, Basu S,
Leftwich PT and Alphey L (2023),
Optimizing CRE and PhiC31 mediated
recombination in *Aedes aegypti*.
Front. Bioeng. Biotechnol. 11:1254863.
doi: 10.3389/fbioe.2023.1254863

Optimizing CRE and PhiC31 mediated recombination in *Aedes aegypti*

Leonela Z. Carabajal Paladino, Ray Wilson[†], Priscilla Y. L. Tng,
Vishaal Dhokiya[†], Elizabeth Keen[†], Piotr Cuber[†], Will Larner[†],
Sara Rooney[†], Melanie Nicholls, Anastasia Uglow[†], Luke Williams[†],
Michelle A. E. Anderson[†], Sanjay Basu[†], Philip T. Leftwich[†] and
Luke Alphey^{†*}

Arthropod Genetics Group, The Pirbright Institute, Woking, United Kingdom

Introduction: Genetic manipulation of *Aedes aegypti* is key to developing a deeper understanding of this insects' biology, vector-virus interactions and makes future genetic control strategies possible. Despite some advances, this process remains laborious and requires highly skilled researchers and specialist equipment.

Methods: Here we present two improved methods for genetic manipulation in this species. Use of transgenic lines which express Cre recombinase and a plasmid-based method for expressing PhiC31 when injected into early embryos.

Results: Use of transgenic lines which express Cre recombinase allowed, by simple crossing schemes, germline or somatic recombination of transgenes, which could be utilized for numerous genetic manipulations. PhiC31 integrase based methods for site-specific integration of genetic elements was also improved, by developing a plasmid which expresses PhiC31 when injected into early embryos, eliminating the need to use costly and unstable mRNA as is the current standard.

Discussion: Here we have expanded the toolbox for synthetic biology in *Ae. aegypti*. These methods can be easily transferred into other mosquito and even insect species by identifying appropriate promoter sequences. This advances the ability to manipulate these insects for fundamental studies, and for more applied approaches for pest control.

KEYWORDS

integration, plasmid, cassette exchange, transgenesis, mosquito

1 Introduction

Aedes aegypti is the key mosquito vector of a range of important arboviruses including dengue virus, Zika virus, chikungunya virus and yellow fever virus (World Health Organisation, 2014). A better understanding of its life cycle, methods of population control, and host-virus interaction, among others, is therefore important. Some studies, e.g., the generation of genetic control methods such as engineered sterile males or gene drives, benefit from the use of genetic manipulation of the mosquito (Alphey, 2014).

Genetic transformation of *Ae. aegypti*, i.e., stable integration of a foreign sequence (transgene), was first reported by Coates et al. (1998), who used the *mariner* transposable

element to insert a wild-type copy of the *Drosophila melanogaster cinnabar* gene into an *Ae. aegypti* strain mutant for the homologous gene *kynurenine hydroxylase*. Since then, there has been a plethora of reports of the successful generation of *Ae. aegypti* transgenic lines for basic studies, and also directed towards developing functional strains for disease control. Despite significant improvements, the generation of transgenic mosquitoes is still laborious and a specialist activity available in relatively few labs. For this reason, alternative methods for transformation, and means to maximise the value and utility of each transgenic line, would be highly desirable.

In vivo recombination, primarily using the Cre-lox system, has been extremely valuable in animal genetics (Nagy, 2000). Initial attempts to use this tool in *Ae. aegypti* indicated a rather low efficiency (Jasinskiene et al., 2003). Perhaps as a result, the system has been subsequently under-utilised, with the exception of some “cassette exchange” transformation experiments (Nimmo et al., 2006; Haghghat-Khah et al., 2015; Häcker et al., 2017).

Cre recombinase is an enzyme expressed by the coliphage P1 that recognises short asymmetrical lox sequences and catalyses their recombination (Austin et al., 1981; Sauer, 1987). When both lox sequences have the same orientation, the recombination event will result in the deletion of the fragment between both lox sites, leaving only one lox sequence behind (Figure 1A).

The native loxP sequence from phage P1 comprises two inverted repeats separated by a spacer region (Hoess et al., 1982). The efficiency of the recombination is determined by the homology within the spacer region (Hoess et al., 1986), while the affinity of the recombinase is determined by the inverted repeat palindromic arms (Albert et al., 1995). Genome screening and directed mutation of the spacer region have generated several additional lox sites that can be used for genome manipulation (Albert et al., 1995; Araki et al., 1997; Lee and Saito, 1998; Langer et al., 2002; Livet et al., 2007).

The use of Cre recombinase was previously described in *Ae. aegypti*, based on micro-injection of either purified Cre enzyme, capped mRNA helper, or a plasmid encoding Cre (Jasinskiene et al., 2003; Nimmo et al., 2006; Haghghat-Khah et al., 2015; Häcker et al., 2017). Here we revisited the feasibility of *in vivo* recombination using Cre expressed both in germline to produce offspring with modified genomes, and in somatic cells to produce somatic mosaics. We tested the efficiency of the transgenic mosquito lines expressing Cre, in different constructs that can then be modified for a variety of studies, and we were able to achieve each intended manipulation with good efficiency.

Another useful recombinase, which may be used in combination with Cre-lox, is the integrase enzyme expressed by *Streptomyces* temperate phage PhiC31, that catalyses the unidirectional and stable integration of large DNA fragments in specific sites. In synthetic biology applications, the enzyme catalyses the recombination of the phage attachment site (*attP*) typically inserted into the target genome after using conventional transgenesis, and the bacterial attachment site (*attB*) present in the donor plasmid. As a result, new hybrid *attL* and *attR* sites are generated. Unlike lox sites, *attP* and *attB* are substantially different in sequence, so the recombinant sequences *attL* and *attR* do not match either and are no longer recognised by the integrase (Thorpe and Smith, 1998). Consequently, recombination mediated by PhiC31 integrase is essentially irreversible. This has allowed its use for germline transformation, whereas with Cre-lox recombination the equilibrium of the reversible reaction is directed heavily towards the non-integrated

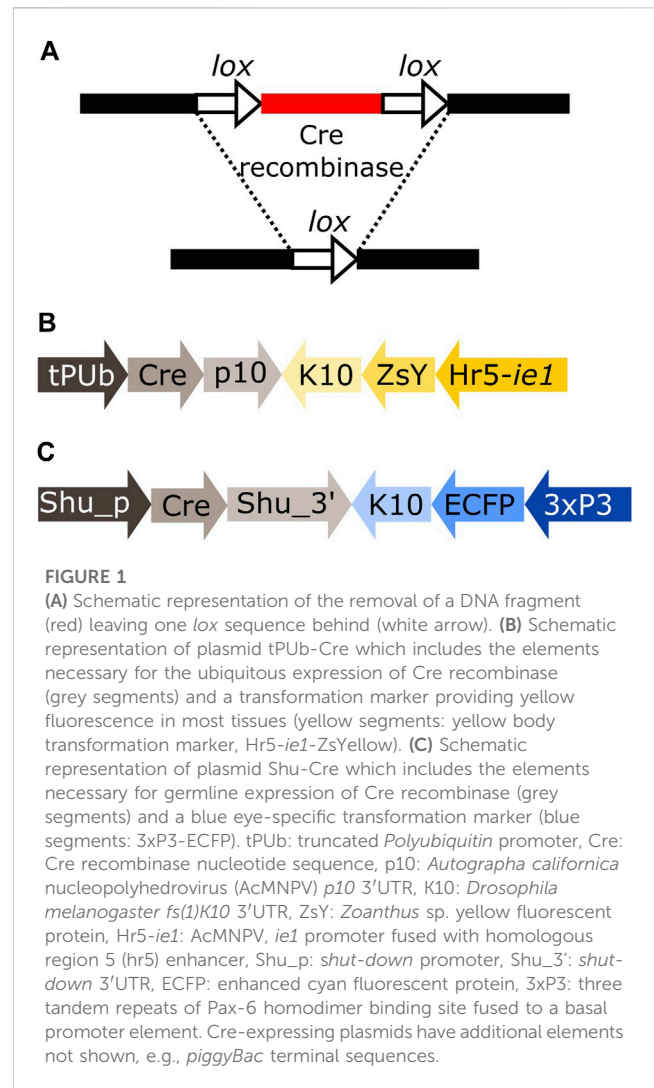


FIGURE 1

(A) Schematic representation of the removal of a DNA fragment (red) leaving one lox sequence behind (white arrow). (B) Schematic representation of plasmid tPub-Cre which includes the elements necessary for the ubiquitous expression of Cre recombinase (grey segments) and a transformation marker providing yellow fluorescence in most tissues (yellow segments): yellow body transformation marker, Hr5-*ie1*-ZsYellow. (C) Schematic representation of plasmid Shu-Cre which includes the elements necessary for germline expression of Cre recombinase (grey segments) and a blue eye-specific transformation marker (blue segments): 3xP3-ECFP. tPub: truncated *Polyubiquitin* promoter, Cre: Cre recombinase nucleotide sequence, p10: *Autographa californica* nucleopolyhedrovirus (AcMNPV) p10 3'UTR, K10: *Drosophila melanogaster fs(1)K10* 3'UTR, ZsY: *Zoanthus* sp. yellow fluorescent protein, Hr5-*ie1*: AcMNPV, *ie1* promoter fused with homologous region 5 (hr5) enhancer, Shu_p: shut-down promoter, Shu_3': shut-down 3'UTR, ECFP: enhanced cyan fluorescent protein, 3xP3: three tandem repeats of Pax-6 homodimer binding site fused to a basal promoter element. Cre-expressing plasmids have additional elements not shown, e.g., *piggyBac* terminal sequences.

form. Though mutant derivatives of lox can potentially be used to reduce the rate of excision, initial experiments indicated PhiC31 to be much preferable (Nimmo et al., 2006).

Transformation of *Ae. aegypti* using PhiC31 integrase is traditionally performed by expressing the enzyme from mRNA included in the injection mix (Nimmo et al., 2006; Franz et al., 2011; Khoo et al., 2013; Haghghat-Khah et al., 2015). The use of mRNA adds extra steps to the transformation procedure, as it needs to be transcribed *in vitro*, DNase treated, purified, precipitated, and resuspended. Efficiency, convenience and reproducibility are also potentially affected by the relative instability of this mRNA. Here we improved this tool by expressing the PhiC31 enzyme from a plasmid included in the injection mix, avoiding the use of mRNA.

2 Materials and methods

2.1 Plasmid construction

Plasmids were generated by standard molecular biology techniques including HiFi assembly (New England BioLabs). All plasmids were prepared for microinjection using the NucleoBond Xtra Midiprep kit

EF (Machery-Nagel) and confirmed by Sanger sequencing. Sequences of the plasmids designed for this manuscript and of the transgenes of the transgenic lines used are deposited into GenBank, and the accession numbers are detailed in [Supplementary Table S1](#).

2.2 General mosquito maintenance

Aedes aegypti mosquitoes (Liverpool wild-type strain and transgenics derived from them) were reared at 28°C and 70% relative humidity with a 14:10 h light:dark cycle. Adults were kept in BugDorm cages with cotton wool pads soaked with 10% sucrose solution. Transgenic lines were maintained in hemizygous state by crossing transgenic males with wild-type females at a 1:2 male:female ratio. From day 5–7 post-eclosure, females were blood fed once every 5 days, three times, to collect three ovipositions. Defibrinated horse blood (TCS) was offered until most of the females were engorged using a Hemotek membrane feeding system (Hemotek Ltd.) covered with hog gut and an over-layer of parafilm. Two days after blood meal, egg cups consisting of 1 oz clear polypropylene portion pots with a strip of coffee filter paper wrapped inside and half filled with reverse osmosis water, were added to the cages to allow egg laying. The egg cups were removed 5 days later, and egg papers hatched when required. Eggs were vacuum hatched for 2 h in 50 ml solution of reverse osmosis water with LiquiFry N° 1 (Interpet) (500 ml of water +6 drops of LiquiFry). The larvae were then transferred to a new tray with reverse osmosis water and fed TetraMin ornamental Fish Flakes *ad libitum*. Transgenic mosquitoes were identified in larval or pupal stages based on their fluorescent marker profile using an MZ10F stereomicroscope (Leica Microsystems) equipped with suitable filters. Mosquitoes were sexed under a stereomicroscope at the pupal stage according to the shape of the genital lobe.

All mosquito procedures were reviewed and approved by the Biological Agents and Genetic Modification Safety Committee (BAGMSC) at The Pirbright Institute.

2.3 Generation of transgenic lines

Cages with approximately 1,000 5–7 days post-eclosure wild-type females mated with 500 wild-type males were blood fed as described above in the general mosquito maintenance section. In order to collect embryos within 1 hour of oviposition for microinjection, no substrate for oviposition was provided. Five to 7 days after the blood meal, 15–20 females were transferred into a *Drosophila* tube with damp cotton wool covered by a layer of filter paper and kept for 20–30 min in the dark to promote oviposition. White eggs were lined up side by side in the same orientation on a piece of filter paper and then transferred onto a cover slip with Scotch Double Sided Tape 665 (3M). Eggs were covered with halocarbon oil 27 (Sigma Aldrich) to prevent desiccation before microinjection in their posterior end. Injections were performed using Sutter quartz needles (1.0 mm external diameter 0.70 mm internal diameter needles with filaments) drawn out on a Sutter P-2000 laser micropipette puller (Sutter Instrument) with the following program: Heat = 729, FIL = 4, VEL = 40, DEL =

128, PUL = 134, LINE = 1. Injections were carried out using a standard microinjection station equipped with a FemtoJet 4x microinjector (Eppendorf). The injection mix contained 500 ng/μl of the plasmid intended for insertion, 300 ng/μl of helper plasmid AePUB-hyperactive *piggyBac* transposase (Anderson et al., 2022) for the generation of transgenic lines or AePUB-PhiC31 (this manuscript) for PhiC31 mediated integration, 1x Injection buffer (Coates et al., 1998) and endotoxin-free water.

After microinjection, the eggs were washed with water and transferred onto damp filter paper in a moist chamber. Five days after injection the eggs were vacuum hatched as described for general maintenance. The collected pupae were sexed under a stereomicroscope. Each Gen₀ male was single crossed with 5 wild-type females, and the individuals were pooled in groups of 3–5 single crosses after 48 h. Gen₀ females were pooled in groups of 4–5 females and 8–10 wild-type males. The cages were fed with 10% sucrose, blood fed every 5–6 days and 5 ovipositions were collected in total. The Gen₁ egg papers were hatched as previously described, and the 3rd-4th instar larvae were screened for the presence of the transformation marker. Single positive Gen₁ individuals were crossed with wild-type counterparts and maintained as described above.

The number of transgene insertions and sex-linkage of the constructs were assessed according to standard rearing procedures by crossing transgenic males to wild-type females and quantifying the number of males and females of wild-type and transgenic phenotypes, and comparing them to the expected frequencies for an autosomal single insertion (i.e. 50% males and 50% females, 50% transgenic and 50% wild-type). Flanking PCR was also used (see protocol in the Molecular analysis section). Only lines with single insertions were used in experiments. Information regarding the insertion site of the lines used in these experiments is detailed in [Supplementary Table S2](#).

2.4 Experimental crosses

50 females and 25/50 males of the corresponding mosquito lines (wild-type or transgenics) were pooled together according to the experiment (see Results section) and maintained as described above. For screening, 3 replicates of 300 eggs each were hatched and kept in trays with 1.5 l of reverse osmosis water and fed with TetraMin ornamental Fish Flakes *ad libitum*. This was done to ensure optimal developmental conditions for all the genotypes. Individuals were screened in larval or pupae stage and photographed when needed using a DFC7000 T camera (Leica Microsystems).

2.5 Statistical analysis

Chi square tests of independence were used in crosses involving the tPUB-Cre and Shu-Cre lines to study the egg to pupa survival of the double hemizygous, both single hemizygous and wild-type individuals of the different crosses. The observed values were calculated as an average of those observed in the three replicates. For individuals carrying a construct susceptible to recombination,

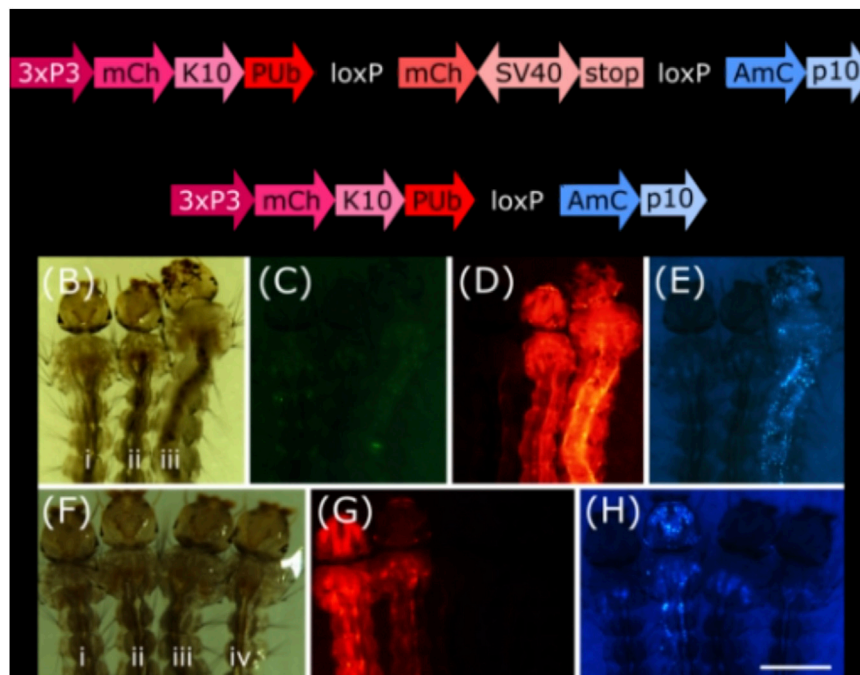


FIGURE 2

(A) Schematic representation of plasmid PUB-loxP-mCh-stop-loxP-AmC before and after Cre mediated recombination. (B–E) Individuals hemizygous for tPUB-Cre (i) or PUB-loxP-mCh-stop-loxP-AmC (ii) and double hemizygous (iii). (F–H) Individuals hemizygous for PUB-loxP-mCh-stop-loxP-AmC (i) or Shu-Cre (iii), double hemizygous (ii) and wild-type (iv). (B) and (F): bright field, (C): ZsYellow filter, (D) and (G): mCherry filter, (E) and (H): AmCyan filter. Scale bar = 1 mm. 3xP3: three tandem repeats of Pax-6 homodimer binding site fused to a basal promoter element, mCh: mCherry red fluorescent protein, K10: *Drosophila melanogaster* K10 3'UTR, PUB: Polyubiquitin promoter, SV40: Simian virus 40 PolyA sequence, AmC: *Anemonia majano* cyan fluorescent protein, p10: *Autographa californica* nucleopolyhedrovirus p10 3'UTR.

the values of the non-recombined and recombined phenotypes were added. The expected values were calculated considering a normal segregation of the constructs and full survival of the phenotype, i.e., 25% of the average of the total number of individuals recovered per replicate.

Student's *t*-tests were carried out to compare number of individuals per genotype between crosses of the Shu-Cre line.

All tests were carried out using R (ver 4.2.2) (R Core Team, 2022) in RStudio 2022.12.0 + 353, with the MASS (Venables and Ripley, 2002), rstatix (Kassambara, 2023) and dplyr (Wickham et al., 2023)

2.6 Molecular analysis

Genomic DNA was extracted from larvae or pupae of the selected lines using NucleoSpin Tissue gDNA extraction kit (Macherey-Nagel).

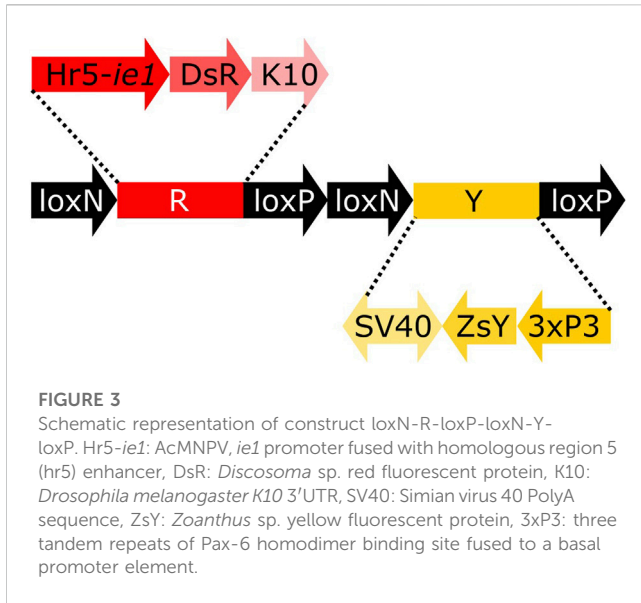
Flanking PCR was performed according to previously reported methods (Liu and Chen, 2007; Martins et al., 2012). Genomic DNA was digested using enzymes DpnII, MspI and NcoI (New England Biolabs) and PCRs were performed with DreamTaq (Thermo Fisher Scientific). Adaptors were built with primers 6,770 (5'-GTGTAGCGTGAAGACGACAGAAAGGGCGTGGTGC GGAGGGCGGTG-3') and 6,776 (5'-GATCCACCGCCCTCCG-3') for DpnII, 6,770 and 6,775 (5'-CGCACC GCCCTCCG-3') for MspI, and 6,770 and

6,789 (5'-CATGCACCGCCCTCCG-3') for NcoI. The primary PCR used primers 6,774 (5'-GTGTAGCGTGAAGACGACAGAA-3') and 6,772 (5'-CAGTGACACTTACCGCATTGACAAG-3') to amplify the 5' insertion site, and 6,774 and 6,773 (5'-CAGACC GATAAAACACATGCGTCA-3') to amplify the 3' insertion site. The nested PCR used primers 6,774 and 6,771 (5'-GGCGACTGATGTCTTAAATGCAC-3') to amplify the 5' insertion site, and 6,774 and 6,787 (5'-ACGCATGATTATCTTTAACGTACG-3') to amplify the 3' insertion site.

PCR reactions for the other experiments were performed in a final volume of 100 μ l using 50–150 ng of template, 5 μ l of primer forward 10 μ M, 5 μ l of primer reverse 10 μ M, 50 μ l of Q5 High-Fidelity 2x Master Mix (New England Biolabs) and water.

To test for the removal of internal sequences for interaction analyses, primers 6,676 (5'-TGTGCAGTCGGTTAGTTGGGA AAGG-3') and 5,038 (5'-GGCCATTGTGACTTTGAAGGTGGA GG-3') were used. Cycling conditions included an initial denaturation step at 98° for 30 s, 35 cycles of 98° 10 s, 72° 1 min 35 s, and a final elongation at 72° for 2 min. A fragment of 3,135 bp was expected if the internal sequence was present, and of 350 bp if the sequence was absent.

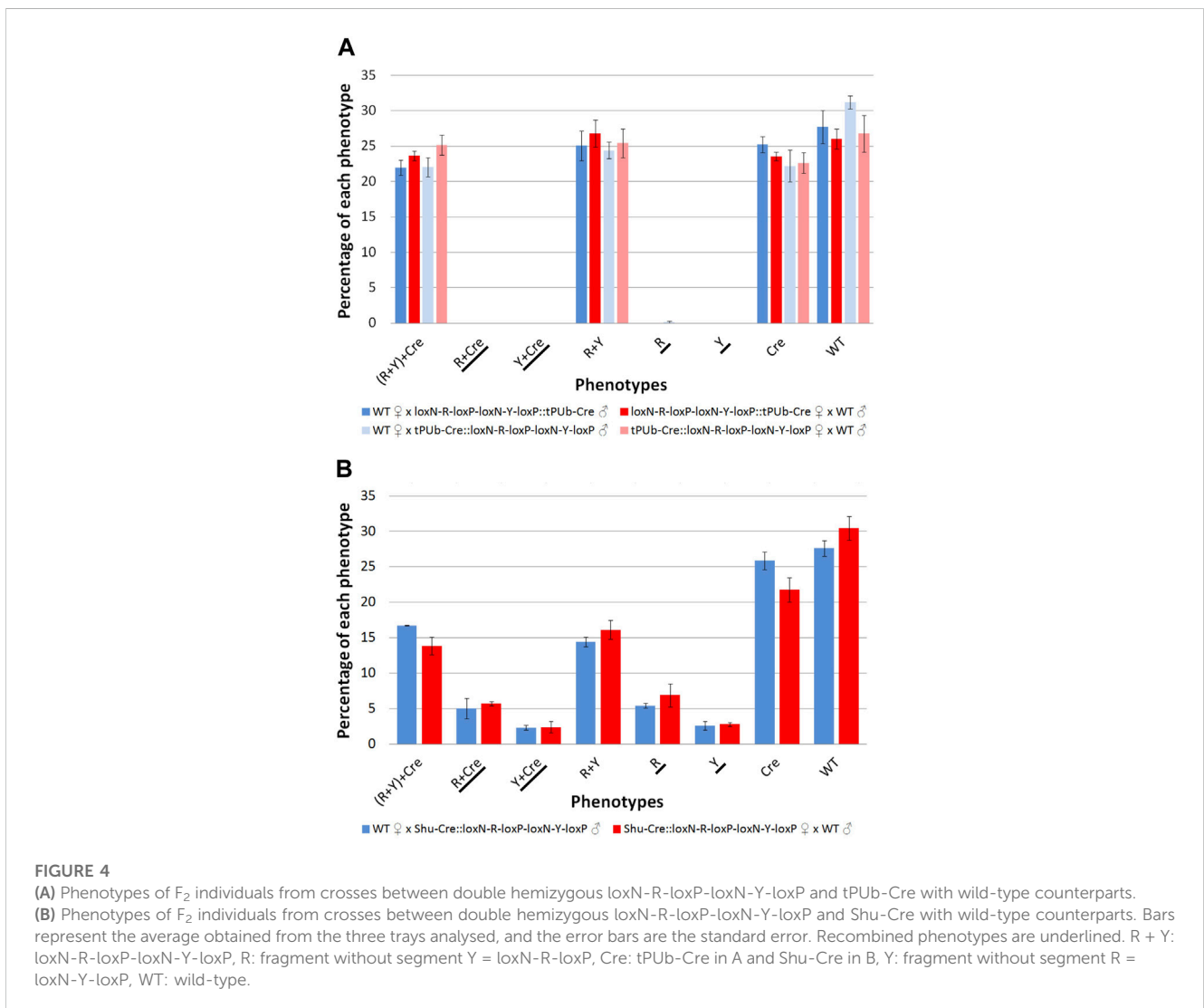
To test for the removal of backbone sequences, primers 5,842 (5'-CAGACATGATAAGATAACATTGATG-3') and 6,792 (5'-AATGACATCATCCACTGATCG-3') were used. Cycling conditions included an initial denaturation step at 98° for 30 s, 35 cycles of 98° 10 s, 59° 15 s and 72° 2 min 45 s, and a final elongation at 72° for

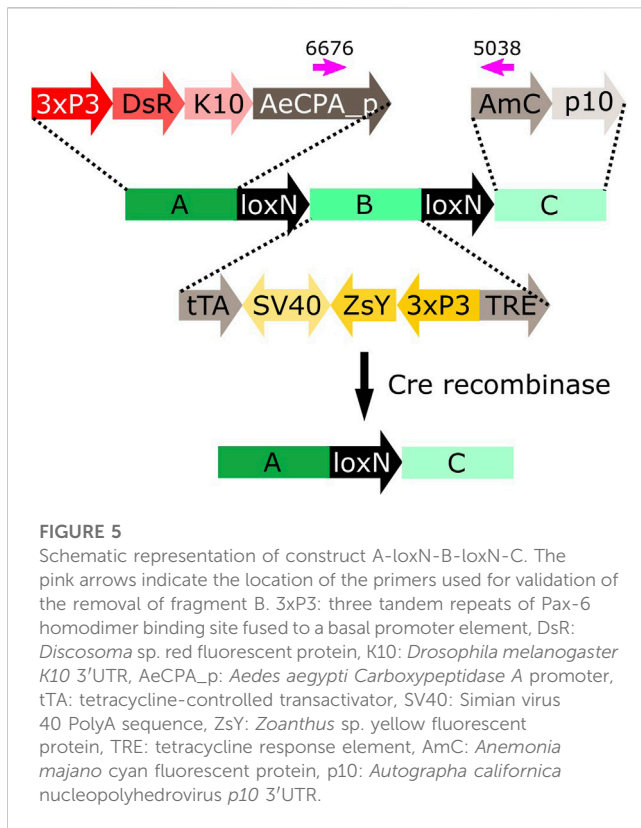


2 min. A fragment of 5,281 bp was expected if the backbone sequence was present, and of 578 bp if the sequence was absent.

To test for correct PhiC31 integrase mediated integration, primer pair 6,707 (5'-TCGGTCTGTATATCGAGGTTTAT-3') and 6,799 (5'-CCCTCACGGTGAAGTAGTG-3') was used to amplify the *attL* region, and primer pair 6,795 (5'-GCACAAGCTGGAGTACAACATA-3') and 6,791 (5'-CCAGTTCGGTTATGAGCCGT-3') was used to amplify the *attR* region. Cycling conditions included an initial denaturation step at 98° for 30 s, 35 cycles of 98° 10 s, 63° 15 s and 72° 45 s, and a final elongation at 72° for 2 min. Fragments of 1,101 bp and 1,393 bp were expected for *attL* and *attR*, respectively.

PCR products were run in a 1% agarose gel with SYBR™ Safe DNA Gel Stain (Thermo Fisher Scientific) and photographed using a Bio-Rad Gel Doc imaging system. As clear single bands were observed in all cases, the remaining PCR product was purified using NucleoSpin Gel and PCR Clean-up kit (Macherey-Nagel) and Sanger sequenced using both forward and reverse primers.





3 Results

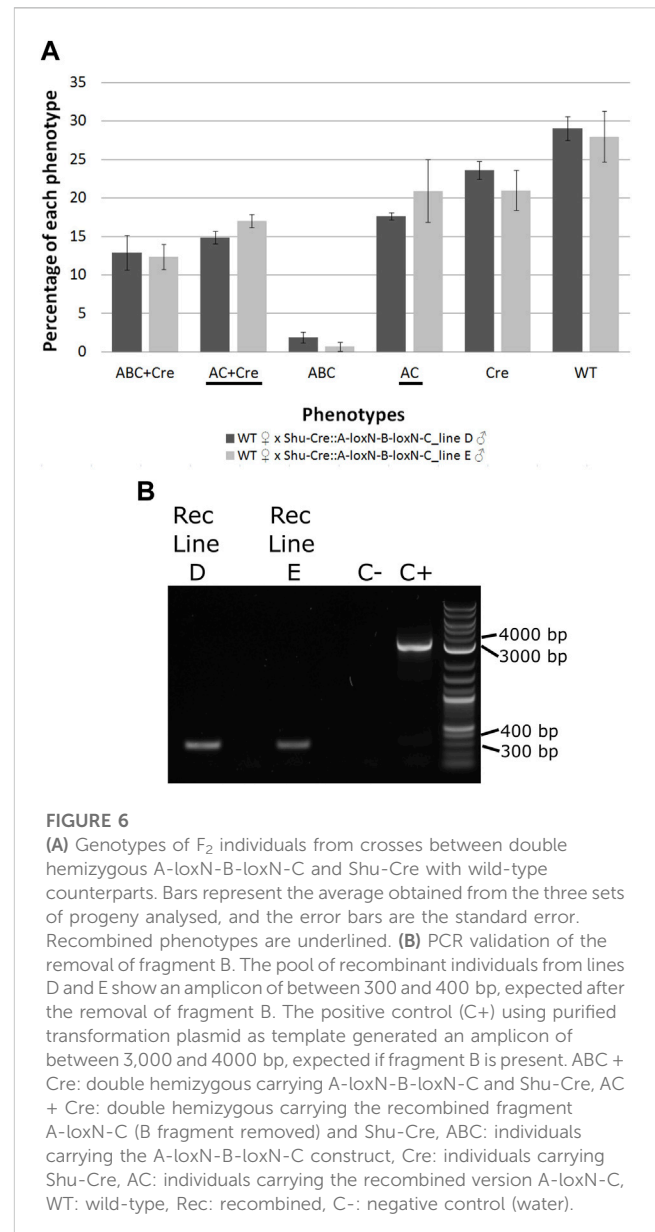
3.1 Cre recombinase expressing lines

We generated transgenic mosquito lines expressing Cre recombinase either in a broad range of tissues using a truncation of the *Polyubiquitin* gene promoter (AAEL003888, Bartholomeussen et al., 2018) (tPUB-Cre, Figure 1B) or the germline specific *shut-down* gene promoter (from OP823146, Anderson et al., 2023) (Shu-Cre, Figure 1C). The Cre coding sequence used was modified for expression in *Ae. aegypti* by adjusting codon usage to avoid rare codons ("codon-optimised"). We tested these lines by crossing them to different transgenic reporter lines.

3.2 Somatic effect of Cre recombinase expression

To analyse these lines for their somatic effect, we generated a reporter mosquito line carrying the construct PUB-loxP-mCh-stop-loxP-AmC (Figure 2A). These individuals express the red fluorophore mCherry over the whole body; after Cre mediated recombination, the mCherry open reading frame should be removed and the cyan fluorophore AmCyan expressed instead (Figure 2A, Supplementary Figure S1).

We screened the F₁ progeny of crosses between hemizygous tPUB-Cre or Shu-Cre individuals with hemizygous counterparts from the reporter line. The three transgenic lines have their own transformation marker making it possible to identify all the genotypes of the F₁: yellow body for tPUB-Cre, blue optic nerves for Shu-Cre, and red optic nerves for the reporter (Figures 1A, B, 2A).



For both types of crosses, all double hemizygous F₁ individuals expressed mCherry and AmCyan over the whole body (Figures 2B–H), indicating that the removal of the loxP-mCh-stop-loxP section (leaving one loxP sequence behind) occurred in many cells. Whole body expression of Cre in the tPUB-Cre line was expected due to the nature of the promoter. In the Shu-Cre line, although expression of *shut-down* is germline-specific, the promoter fragment used was known to provide some somatic expression as well (Anderson et al., 2023), which was now visually corroborated.

3.3 Germline effect of Cre recombinase expression

To analyse the lines for their germline effect we generated a reporter mosquito line carrying the construct loxN-R-loxP-loxN-Y-

loxP (Figure 3, Supplementary Figure S2). These mosquitoes express a red body marker from fragment R, and a yellow optic nerves marker from fragment Y. As lines tPub-Cre and Shu-Cre have yellow body and blue optic nerves markers respectively, all the genotypes deriving from the crosses could be identified (see example in Supplementary Figure S3). The reporter line includes other sequences that are not relevant for this study (Supplementary Figure S2), and hence their effect is not addressed. The use of two overlapping pairs of incompatible *lox* sites—*loxP* and *loxN*—means that recombination between one pair removes one of the other pair, thus preventing recombination based on that site. Recombination therefore has two possible stable outcomes i) recombination between *loxP* sites deleting segment Y, retaining segment R and therefore red fluorescence; ii) recombination between *loxN* sites deleting segment R, retaining segment Y and therefore yellow fluorescence.

We first screened the F₁ progeny of crosses between tPub-Cre or Shu-Cre with the reporter line. In order to address any possible sex specific effect, both reciprocal crosses were performed for line tPub-Cre, but as line Shu-Cre is linked to the *m* allele of the *M/m* male determining locus (“*m*-linked”), only Shu-Cre females were used. Double hemizygous F₁ males and females were subsequently crossed to wild-type counterparts, the F₂ was screened, and their phenotypes were assessed for recombination events.

The results for line tPub-Cre are summarised in Figure 4A and detailed in Supplementary Tables S3–S6. The results for line Shu-Cre are summarised in Figure 4B and detailed in Supplementary Tables S7, S8. The analysis of the segregation of the tPub-Cre and *loxN-R-loxP-loxN-Y-loxP* constructs (adding up recombined and non-recombined versions of the latter), showed no statistically significant differences with the expected frequencies (25% each—double hemizygous, single hemizygous for each insertion and wild-type) (Chi-square test of independence: $p > 0.05$). This suggests no substantial lethal effect of the recombinase line or the recombined fragments (power analysis: $N > 250$, $\beta > 0.9$, $\omega < 0.3$ for all crosses). Crosses with the tPub-Cre line produced only one recombinant individual for one of the two possible phenotypes (red body from red body or yellow optic nerves). This indicated little or no expression—or function, but see below—of Cre in the germline of this strain, likely due to the PUB promoter fragment used in this line.

Crosses with the Shu-Cre line generated individuals of each of the two possible recombined phenotypes. Analysis of the observed frequencies of the segregating constructs found no evidence for lethal effect for any of the genotypes (Chi-square test of independence: $p > 0.05$), and expression of Cre recombinase in the germline. A linear model was constructed to compare the number of individuals per phenotype between crosses, and no differences were observed (Student’s *t*-test: $p > 0.05$, Supplementary Table S9). A power analysis indicates that there is no evidence for a difference in efficiency of the Cre recombinase between the male and female germline ($\beta = 0.9$, $f = 0.2$).

The efficiency of the Cre lines in the germline, calculated as the percentage of individuals carrying a recombined construct (R + Cre, Y + Cre, R and Y) was 0.16% for line tPub-Cre and between 15.4% and 17.8% for the Shu-Cre line.

3.4 Further experiments using Shu-Cre

As the Shu-Cre line was found to be highly efficient at inducing recombination in the germline (15.4%–17.8% efficiency), we further analysed it using other lines containing *lox* sites.

3.4.1 Removal of internal sequences for interaction analyses

We used the Shu-Cre line to remove an internal fragment within a transgene of mosquito lines available in the laboratory. These lines were developed to help compare bipartite expression using the tet-off system (Gossen and Bujard, 1992) (promoter-tTA>TRE-reporter) with direct expression (promoter-reporter). Here we focus on the Cre-*loxN* data only.

We used two lines carrying the reporter construct A-*loxN*-B-*loxN*-C (Figure 5) in two different locations on chromosome 2: lines D and E (Supplementary Table S2).

The construct A-*loxN*-B-*loxN*-C has two transformation markers: red optic nerves for segment A, and yellow optic nerves for segment B (Figure 5). The removal of fragment *loxN*-B-*loxN* (leaving a *loxN* behind) should result in the loss of the yellow marker (Figure 5).

Males of each line carrying the construct A-*loxN*-B-*loxN*-C were crossed to Shu-Cre females, and the double hemizygous F₁ were crossed to wild-type counterparts. The F₂ was screened (see schematic representation of the expected phenotypes in Supplementary Figure S4); results are summarised in Figure 6A and detailed in Supplementary Tables S10, 11. Analysis of the segregation of the constructs Shu-Cre and A-*loxN*-B-*loxN*-C (adding up non-recombined A-*loxN*-B-*loxN*-C and recombined A-*loxN*-C individuals) showed no significant statistical differences ($p > 0.05$) with the expected values (25% each—double hemizygous, single hemizygous for each insertion and wild-type). It is unclear, however, why fewer A-*loxN*-B-*loxN*-C individuals were observed compared to double hemizygous Shu-CreA-*loxN*-B-*loxN*-C, as no effect on survival is expected of the Shu-Cre construct (as observed when the germline effect of the line was tested above).

The efficiency of the Cre line in the germline, calculated as the percentage of individuals carrying a recombined construct (Shu-CreA-*loxN*-C and A-*loxN*-C), was higher in this experiment with 32.49% for Line D and 37.93% for Line E (compared to 15.4%–17.8% obtained with the *loxN*-R-*loxP*-*loxN*-Y-*loxP* lines—see previous section).

For a subset of the recombinants, the removal of fragment B was additionally assessed by PCR (Figure 6B). The PCR primers were located within sections A and C (Figure 5, pink arrows). Presence of fragment B should be detected by the amplification of an amplicon of 3,135 bp, and the absence of the fragment should generate an amplicon of 350 bp. As observed in Figure 6B, recombined lines D and E showed an amplicon of the expected size, the negative control of water (C-) did not produce an amplicon, and the positive control using purified plasmid (C+) presented only the larger amplicon. The obtained fragments were purified and the identity of the sequences was confirmed *via* Sanger sequencing (Supplementary Table 12).

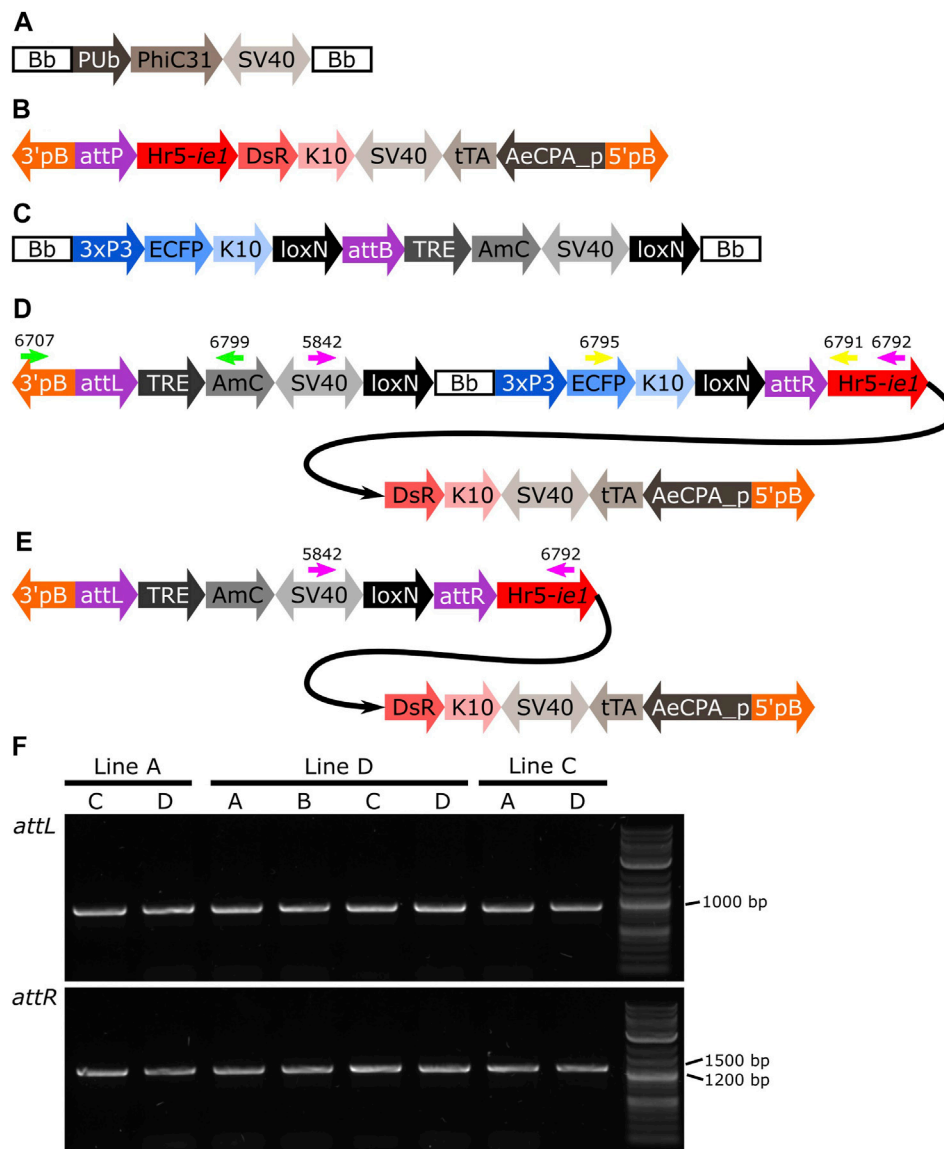


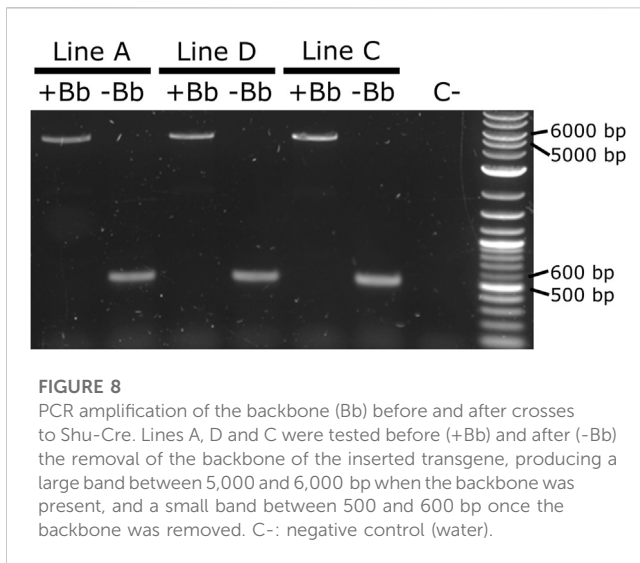
FIGURE 7

(A) Schematic representation of plasmid PUB-PhiC31. (B) Schematic representation of the target site. (C) Schematic representation of the donor plasmid. (D) Schematic representation of the donor plasmid inserted in the target site, and location of primers for PCR testing of *attL* and *attR* junctions and backbone removal (green, yellow and pink arrows, respectively). (E) Schematic representation of the insertion after removal of the backbone. (F) PCR amplification of junctions including sites *attL* and *attR* in all the pools with positive G_1 (Table 1). All lines produced an amplicon of approx. 1,000 bp for *attL*, and between 1,200 and 1,500 bp for *attR*, as expected. Bb: backbone, PUB: *Polyubiquitin* promoter, PhiC31: *Streptomyces* temperate phage PhiC31 integrase, SV40: Simian virus 40 PolyA sequence, 3'pb: 3' piggyBac end, attP: phage attachment site, Hr5-*ie1*: *Autographa californica* nucleopolyhedrovirus *ie1* promoter fused with homologous region 5 (hr5) enhancer, *Drosophila melanogaster* K10 3'UTR, tTA: tetracycline-controlled transactivator, AeCPA_p: *Aedes aegypti* Carboxypeptidase A promoter, 5'pb: 5' piggyBac end, 3xP3: three tandem repeats of Pax-6 homodimer binding site fused to a basal promoter element, ECFP: enhanced cyan fluorescent protein, attB: bacterial attachment site, TRE: tetracycline response element, AmC: *Anemonia majano* cyan fluorescent protein, attL: *attP*+*attB* hybrid site, attR: *attB*+*attP* hybrid site.

3.4.2 Removal of backbone sequences

Methods that integrate an entire plasmid, e.g., PhiC31 mediated integration, insert in the target site sequences that may be undesirable for some downstream studies or uses, e.g., plasmid origin of replication and antibiotic resistance genes. With efficient Cre-*lox* recombination available as shown above, an option to remove undesirable sequences post-integration could be

provided by flanking such sequences with suitable *lox* sites. We used the lines generated below using PhiC31 integrase (*attL*-TRE-AmC-Bb-*attR*-AeCPA-tTA, Figure 7D) and crossed males of each line to Shu-Cre females. We only used one pool per line since, as expected and validated (see PhiC31 experiment below), all the pools from the same line have the same insertion (Supplementary Table 13). We then selected F₁ males with red body (marker of the target line) and



blue eyes (marker of the inserted plasmid in the target line and the Shu-Cre line) (see Figure 7D for the schematic representation of the transgene in the target line; Figure 1C for the representation of the Shu-Cre transgene). As both the target line and the Shu-Cre line share the blue eyes marker, hemizygous males from the target line were not readily distinguished from double hemizygous males. We used at least 50 males per line, crossed them to wild-type females, and screened their offspring.

Due to the design of the donor plasmid used (Figure 7C), the removal of the backbone after the insertion (Figure 7D) also results in the removal of the marker for the transgene (i.e., blue optic nerves, Figure 7E). An effective recombination will produce individuals carrying only the marker of the original *attP* target line (i.e., red body, see Figure 7B).

As it was not possible to accurately identify the phenotype of the parental male (i.e., to easily distinguish hemizygous from double hemizygous due to the shared blue optic nerves marker), no quantitative analysis was performed. For each line tested, progeny with markers indicating recombination (red body but not blue optic nerves) were readily recovered. One such individual was selected from each line and used for subsequent analysis by PCR and Sanger sequencing. The PCR primers were located within the SV40 segment before the backbone and the *Hr5-*ie1** promoter of the marker after the backbone (Figures 7D,E, primers 5,842 and 6,792 - pink arrows). Presence of the backbone should be detected by the amplification of an amplicon

of 5,281 bp, and the absence of this region should generate an amplicon of 578 bp (see difference between Figures 7D,E). As observed in Figure 8, lines A, D and C generated an amplicon between 5,000 and 6,000 bp before the removal of the backbone (+Bb), and a band between 500 and 600 bp after recombination (-Bb), the negative control of water (C-) did not produce an amplicon. Sanger sequencing of the obtained amplicons demonstrated precise *loxP*-mediated recombination, and efficient removal of the backbone.

3.4.3 PhiC31 integrase mediated integration

Here we expressed the PhiC31 integrase (Genbank KT894025) in the injection mix from a plasmid using the *Ae. aegypti* *Polyubiquitin* promoter (Anderson et al., 2010) (Figure 7A). As target lines we used three mosquito lines available in the laboratory carrying a red body transformation marker (Figure 7A). In line A the transgene is in chromosome 1, in line D it is located in chromosome 2, and in line C it is located in chromosome 3 (Supplementary Figure S2). As donor plasmid we designed the construct attB-TRE-AmC which contains a blue optic nerve marker (Figure 7C). An efficient integration of the donor plasmid will result in individuals carrying two markers, red body and blue optic nerves.

The target lines carry the transgene attP-AeCPA-tTA (Figure 7B), which uses a 1.6 kb fragment the *Ae. aegypti* *Carboxypeptidase A* promoter (AeCPA) to express tTA (Gossen and Bujard, 1992). The interaction, if any, between the AeCPA-tTA and TRE-AmC elements (represented as grey segments in Figures 7B-E) is not relevant for this study and is not discussed.

We injected between 318 and 334 eggs and made between three and five G_0 pools per target line (Table 1). For line A we recovered positive G_1 (i.e., individuals bearing both transformation markers) in two out of five pools, for line D we recovered positive G_1 in all four pools, and in line C we recovered positive G_1 in two out of three pools. We established the lines by crossing the positive G_1 from each pool separately with wild-type counterparts, and then collected G_2 samples for analysis of the insertion site.

After genomic DNA extraction from the different G_2 lines, we corroborated the insertion of the transgene in the target site by amplifying and sequencing both junctions (Figure 7D, Supplementary Table S13). We used primers 6,707 and 6,799 (Figure 7D, green arrows) to amplify *attL*, expecting a product of 1,101 bp, and primers 6,795 and 6,791 (Figure 7D, yellow arrows) to amplify *attR*, expecting a product of 1,393 bp. All lines produced amplicons of the expected sizes (Figure 7F), and all sequences showed hybrid *attL* and *attR* sites (Supplementary Table S13). The PhiC31 integrase plasmid itself carries an *attB* site, a relic of

TABLE 1 Injections of attB-TRE-AmCyan into three lines (A, D and C) carrying attP-AeCPA-tTA. The survival rate was calculated as: (adult G_0 males + adult G_0 females)/injected eggs, and the minimum transformation efficiency as: positive G_1 pools/(adult G_0 males + adult G_0 females). Chr.: chromosome.

Target line	Eggs	G_0 larvae	Adult G_0 males	Adult G_0 females	Survival (%)	Pools (positive G_1) = sex of G_0	Minimum transformation efficiency (%)
A (Chr. 1)	318	25	11	9	6.29	A (0),B (0) = fem C (1),D (9),E (0) = male	10
D (Chr. 2)	334	21	10	8	5.39	A (28),B (14) = fem C (5),D (1) = male	22
C (Chr. 3)	329	11	3	8	3.34	A (2),B (0) = fem C (86) = male	18

its construction history. This may have led to some integration of the PhiC31 plasmid itself. The PhiC31 integrase plasmid has no fluorescence marker so such insertions would not have been recognised; since integration into *attP* is exclusive (first insertion alters the site) double insertions were not expected or identified. To the extent that some wild-type chromosomes were modified in this way and therefore not accessible to integration by the marked plasmid, the insertion rates of Table 1 may be slight underestimates.

4 Discussion

Both Cre and PhiC31 catalyse recombination between specific sequences, *lox* and *att* sites, respectively. These sequences are long enough to be absent from most genomes, so that recombination can be specifically directed to artificially integrated sequences. Furthermore, these sequences are stable in the absence of the relevant enzyme, and the enzyme is essentially inert in the absence of the target sequences. This allows considerable scope for controlling the recombination reaction by combining the two components only under specific conditions. Examples might include crossing two strains, injecting a source of enzyme, e.g., a plasmid encoding the enzyme, etc.

Site-specific integration is desirable over other methods as it can use target sites that have previously been characterised for their pattern and levels of expression, avoiding having to maintain and characterise several mosquito lines with different insertions, or even having to resolve multiple insertions. Targeted integration may now be achieved using CRISPR/Cas-mediated homologous recombination in many cases. This method requires, however, knowledge of the target genome to be able to generate suitable guides (followed by analysis of the efficiency/specificity of those guides) and homology arms, and identify desirable target sites avoiding repetitive sequences and pseudogenes. It also depends on homology-directed repair (HDR) to happen preferably over non-homologous end joining (NHEJ) after the double-strand break is made by the Cas enzyme. Although this may be achieved by silencing elements of the NHEJ pathway (see Basu et al., 2015 for example, in *Ae. aegypti*), this adds an extra layer of complexity to the process.

Considering all the potential limitations described above for CRISPR/Cas-mediated integration, PhiC31 remains an efficient alternative. Unlike for CRISPR/Cas, one *att* site needs to be integrated by other means before the PhiC31 method can be used for integration into the germline. This may be efficiently achieved by establishing “docking lines” where *attP* is inserted in a relatively well-characterised site. This characterisation of the site can be done by sequencing (if a reference genome is available) or by analysing the fitness of the transgenic individual (if the genome is unknown). Besides, although we only inserted a plasmid of approx. 6 kb, it is known that this recombinase can integrate the over 40 kb *Streptomyces* phage PhiC31 genome (Chater et al., 1981), and it is thought that it could have no upper size limit (Olivares and Calos, 2004), broadening the spectrum of possible transformations.

Using a plasmid-encoded source of PhiC31, we achieved efficient integration into *attP* sites in each of the three chromosomes of *Ae. aegypti*, with efficiency levels between 10% and 22%. Previous experiments in *Ae. aegypti* by Nimmo et al.

(2006) using PhiC31 mRNA, had an average efficiency of 23%. It is worth noting the following differences between our and their study: i) we injected 318–334 eggs while they injected 689–1,195; this affects the number of plasmids that can be injected per session, or the number of people/equipment necessary to perform the task, as well as making more difficult the handling of the G_0 depending of the survival rate, ii) we obtained in total between 10 and 88 positive G_1 in both male and female G_0 pools, while they obtained between 1 and 11 positive G_1 males only in the male G_0 pools (no information is provided regarding G_1 females); although theoretically one single transgenic G_1 individuals is required to start a line, as initial survival of transgenics can be poor, the generation of more than one transgenic G_1 is desired, iii) we used three mosquito lines with single *attP* sites in each chromosome of *Ae. aegypti*, while they used two lines with single insertions, one with two insertions, and one with four insertions. Even if the efficiencies are similar, it is clear that the use of a plasmid for the expression of the PhiC31 integrase simplifies the microinjection procedure.

PhiC31 integrates the entire plasmid but, as we demonstrated, undesired sequences can be flanked by *lox* sites to allow efficient subsequent removal. In one special case of this, the docking site might incorporate both *attP* and *lox*, allowing cassette exchange in two steps (PhiC31 recombinase and Cre provided sequentially) or one step (PhiC31 recombinase and Cre provided together) (Haghighat-Khah et al., 2015).

Site-specific recombination has many potential uses, and has been used extensively in insects genetics (e.g., Venken et al., 2016; Ahmed and Wimmer, 2022). Potentially deleterious transgenes may be inactivated by inserting a redundant fragment of DNA that interrupts the gene, then activated by recombination-induced removal of the redundant DNA post-integration. Recombination sites may be inserted within or between genes, allowing specific chromosome deletions or rearrangements to be generated as desired.

We also demonstrated that more complex rearrangements can be induced post-integration. Using overlapping *loxP* and *loxN* pairs, we were able to recover both *loxP* and *loxN* recombinants. These are mutually exclusive pathways, given that recombination between *loxP* removes one of the *loxN* sites, and *loxN* recombination similarly removes the *loxP* site.

Post-integration Cre-*lox* manipulations are preferably managed by crossing in a source of Cre. This allows the use of very low numbers of insects, such as may be available in the first generations after constructing a new transgenic line, whereas injection experiments need substantial numbers of eggs, as well as being considerably more time-consuming than simple crosses. It also removes the effect of injection as a confounding factor when comparing pre- and post-recombination phenotypes. We demonstrated that Cre-mediated *loxP* recombination can be efficiently achieved in the germline using an integrated Cre source (Shu-Cre). With recombination rates at the observed level—approx. 15%–17% with two types of *lox* sites present and 32%–37% with *loxN* only, though this may vary somewhat by insertion—the desired recombinant can likely be recovered from the progeny of only one or a few initial Cre-*lox* insects.

This set of experiments expands the toolbox for synthetic biology in *Ae. aegypti*. It is highly likely that these methods can

be transferred to other mosquito species, as many species of public health importance are now reared and manipulated in the laboratory. In turn, this expands the options both for fundamental studies to better understand the insects, and for applied approaches aiming to develop new methods of controlling mosquito populations and the pathogens that they transmit.

Data availability statement

The datasets presented in this study can be found in online repositories. The names of the repository/repository and accession number(s) can be found in the article/[Supplementary Material](#).

Ethics statement

All mosquito procedures were reviewed and approved by the Biological Agents and Genetic Modification Safety Committee (BAGMSC) at The Pirbright Institute.

Author contributions

LC: Conceptualization, Investigation, Methodology, Writing–original draft. RW: Investigation, Writing–review and editing. PT: Investigation, Methodology, Writing–review and editing. VD: Investigation, Writing–review and editing. EK: Investigation, Writing–review and editing. PC: Investigation, Writing–review and editing. WL: Investigation, Writing–review and editing. SR: Investigation, Writing–review and editing. MN: Investigation, Writing–review and editing. AU: Investigation, Writing–review and editing. LW: Investigation, Writing–review and editing. MA: Resources, Writing–review and editing. SB: Methodology, Writing–review and editing. PL: Conceptualization, Methodology, Writing–review and editing. LA: Conceptualization, Writing–review and editing.

Funding

This research was funded in whole, or in part, by the Wellcome Trust (110117/Z/15/Z and 200171/Z/15/Z). This research was funded in part by the Defense Advanced Research Projects Agency (DARPA) Safe Genes program (N66001-17-2-4054) and

References

- Ahmed, H. M. M., and Wimmer, E. A. (2022). “Site-specific recombination for gene locus-directed transgene integration and modification,” in *Transgenic insects: Techniques and applications* (CABI), 100–124. doi:10.1079/9781800621176.0005
- Albert, H., Dale, E. C., Lee, E., and Ow, D. W. (1995). Site-specific integration of DNA into wild-type and mutant lox sites placed in the plant genome. *Plant J.* 7, 649–659. doi:10.1046/j.1365-313X.1995.7040649.x
- Alphey, L. (2014). Genetic control of mosquitoes. *Annu. Rev. Entomol.* 59, 205–224. doi:10.1146/annurev-ento-011613-162002
- Anderson, M. A. E., Gonzalez, E., Ang, J. X. D., Shackleford, L., Nevard, K., Verkuijl, S. A. N., et al. (2023). Closing the gap to effective gene drive in *Aedes aegypti* by exploiting

PREventing EMerging Pathogenic Threats (PREEMPT) program (HR001118S0017). This work was also supported by strategic funding from the UK Biotechnology and Biological Sciences Research Council (BBSRC) to The Pirbright Institute (BBS/E/I/00007033, BBS/E/I/00007038, and BBS/E/I/00007039).

Acknowledgments

The authors thank Victoria Sy for her assistance in the Insectary during the development of the attP-AeCPA-tTA transgenic line.

Conflict of interest

The authors declare that the research was conducted in the absence of any commercial or financial relationships that could be construed as a potential conflict of interest.

Publisher’s note

All claims expressed in this article are solely those of the authors and do not necessarily represent those of their affiliated organizations, or those of the publisher, the editors and the reviewers. Any product that may be evaluated in this article, or claim that may be made by its manufacturer, is not guaranteed or endorsed by the publisher.

Author disclaimer

The views, opinions and/or findings expressed are those of the author and should not be interpreted as representing the official views or policies of the Department of Defense or the U.S. Government. For the purpose of open access, the author has applied a CC BY public copyright licence to any Author Accepted Manuscript version arising from this submission.

Supplementary material

The Supplementary Material for this article can be found online at: <https://www.frontiersin.org/articles/10.3389/fbioe.2023.1254863/full#supplementary-material>

germline regulatory elements. *Nat. Commun.* 14, 338–339. doi:10.1038/s41467-023-36029-7

Anderson, M. A. E., Gonzalez, E., Edgington, M. P., Ang, J. X. D., Purusothaman, D.-K., Shackleford, L., et al. (2022). A multiplexed, confinable CRISPR/Cas9 gene drive propagates in caged. *bioRxiv*. doi:10.1101/2022.08.12.503466

Anderson, M. A. E., Gross, T. L., Myles, K. M., and Adelman, Z. N. (2010). Validation of novel promoter sequences derived from two endogenous ubiquitin genes in transgenic *Aedes aegypti*. *Insect Mol. Biol.* 19, 441–449. doi:10.1111/j.1365-2583.2010.01005.x

Araki, K., Araki, M., and Yamamura, K. (1997). Targeted integration of DNA using mutant lox sites in embryonic stem cells. *Nucleic Acids Res.* 25, 868–872. doi:10.1093/nar/25.4.868

- Austin, S., Ziese, M., and Sternberg, N. (1981). A novel role for site-specific recombination in maintenance of bacterial replicons. *Cell* 25, 729–736. doi:10.1016/0092-8674(81)90180-X
- Bartholomeeusen, K., Utt, A., Coppens, S., Rausalu, K., Vereecken, K., Ariën, K. K., et al. (2018). A chikungunya virus trans -replicase system reveals the importance of delayed nonstructural polyprotein processing for efficient replication complex formation in mosquito cells. *J. Virol.* 92, 001522–e218. doi:10.1128/jvi.00152-18
- Basu, S., Aryan, A., Overcash, J. M., Samuel, G. H., Anderson, M. A. E., Dahlem, T. J., et al. (2015). Silencing of end-joining repair for efficient site-specific gene insertion after TALEN/CRISPR mutagenesis in *Aedes aegypti*. *Proc. Natl. Acad. Sci. U. S. A.* 112, 4038–4043. doi:10.1073/pnas.1502370112
- Chater, K. F., Bruton, C. J., Springer, W., and Suarez, J. E. (1981). Dispensable sequences and packaging constraints of DNA from the Streptomyces temperate phage phi C31. *Gene* 15, 249–256. doi:10.1016/0378-1119(81)90134-7
- Coates, C. J., Jasinskiene, N., Miyashiro, L., and James, A. A. (1998). Mariner transposition and transformation of the yellow fever mosquito, *Aedes aegypti*. *Proc. Natl. Acad. Sci. U. S. A.* 95, 3748–3751. doi:10.1073/PNAS.95.7.3748
- Franz, A. W. E., Jasinskiene, N., Sanchez-Vargas, I., Isaacs, A. T., Smith, M. R., Khoo, C. C. H., et al. (2011). Comparison of transgene expression in *Aedes aegypti* generated by mariner Mos1 transposition and ΦC31 site-directed recombination. *Insect Mol. Biol.* 20, 587–598. doi:10.1111/j.1365-2583.2011.01089.x
- Gossen, M., and Bujard, H. (1992). Tight control of gene expression in mammalian cells by tetracycline-responsive promoters. *Proc. Natl. Acad. Sci. U. S. A.* 89, 5547–5551. doi:10.1073/PNAS.89.12.5547
- Häcker, I., Harrell, R. A., Eichner, G., Pilitt, K. L., O'Brochta, D. A., Handler, A. M., et al. (2017). Cre/lox-Recombinase-Mediated cassette exchange for reversible site-specific genomic targeting of the disease vector, *Aedes aegypti*. *Sci. Rep.* 7, 1–14. doi:10.1038/srep43883
- Haghighat-Khah, R. E., Scaife, S., Martins, S., St. John, O., Matzen, K. J., Morrison, N., et al. (2015). Site-specific cassette exchange systems in the *Aedes aegypti* mosquito and the plutella xylostella moth. *PLoS One* 10, e0121097. doi:10.1371/JOURNAL.PONE.0121097
- Hoess, R. H., Wierzbicki, A., and Abremski, K. (1986). The role of the *loxP* spacer region in P1 site-specific recombination. *Nucleic Acids Res.* 14, 2287–2300. doi:10.1093/nar/14.5.2287
- Hoess, R. H., Ziese, M., and Sternberg, N. (1982). P1 site-specific recombination: nucleotide sequence of the recombining sites. *Proc. Natl. Acad. Sci. U. S. A.* 79, 3398–3402. doi:10.1073/PNAS.79.11.3398
- Jasinskiene, N., Coates, C. J., Ashikyan, A., and James, A. A. (2003). High efficiency, site-specific excision of a marker gene by the phage P1 cre-loxP system in the yellow fever mosquito, *Aedes aegypti*. *Nucleic Acids Res.* 31, 147e–147e. doi:10.1093/NAR/GNG148
- Kassambara, A. (2023). rstatix: pipe-Friendly Framework for Basic Statistical Tests. R package version 0.7.2. Available at: <https://cran.r-project.org/package=rstatix>.
- Khoo, C. C. H., Doty, J. B., Heersink, M. S., Olson, K. E., and Franz, A. W. E. (2013). Transgene-mediated suppression of the RNA interference pathway in *Aedes aegypti* interferes with gene silencing and enhances Sindbis virus and dengue virus type 2 replication. *Insect Mol. Biol.* 22, 104–114. doi:10.1111/IMB.12008
- Langer, S. J., Ghafouri, A. P., Byrd, M., and Leinwand, L. (2002). A genetic screen identifies novel non-compatible loxP sites. *Nucleic Acids Res.* 30, 3067–3077. doi:10.1093/nar/gkf421
- Lee, G., and Saito, I. (1998). Role of nucleotide sequences of loxP spacer region in Cre-mediated recombination. *Gene* 216, 55–65. doi:10.1016/S0378-1119(98)00325-4
- Liu, Y. G., and Chen, Y. (2007). High-efficiency thermal asymmetric interlaced PCR for amplification of unknown flanking sequences. *Biotechniques* 43, 649–656. doi:10.2144/000112601
- Livet, J., Weissman, T. A., Kang, H., Draft, R. W., Lu, J., Bennis, R. A., et al. (2007). Transgenic strategies for combinatorial expression of fluorescent proteins in the nervous system. *Nature* 450, 56–62. doi:10.1038/nature06293
- Martins, S., Naish, N., Walker, A. S., Morrison, N. I., Scaife, S., Fu, G., et al. (2012). Germline transformation of the diamondback moth, *Plutella xylostella* L., using the piggyBac transposable element. *Insect Mol. Biol.* 21, 414–421. doi:10.1111/j.1365-2583.2012.01146.x
- Nagy, A. (2000). Cre recombinase: the universal reagent for genome tailoring. *Genesis* 26, 99–109. doi:10.1002/(SICI)1526-968X(200002)26:2<99::AID-GENE1>3.0.CO;2-B
- Nimmo, D. D., Alphey, L., Meredith, J. M., and Eggleston, P. (2006). High efficiency site-specific genetic engineering of the mosquito genome. *Insect Mol. Biol.* 15, 129–136. doi:10.1111/j.1365-2583.2006.00615.x
- Olivares, E. C., and Calos, M. P. (2004). Phage φC31 integrase-mediated site-specific integration for gene therapy. *Gene Ther. Regul.* 2, 103–120. doi:10.1163/156855803322664600
- R Core Team (2022). R: A language and environment for statistical computing. Available at: www.R-project.org.
- Sauer, B. (1987). Functional expression of the cre-lox site-specific recombination system in the yeast *Saccharomyces cerevisiae*. *Mol. Cell. Biol.* 7, 2087–2096. doi:10.1128/mcb.7.6.2087-2096.1987
- Thorpe, H. M., and Smith, M. C. M. (1998). *In vitro* site-specific integration of bacteriophage DNA catalyzed by a recombinase of the resolvase/invertase family. *Proc. Natl. Acad. Sci. U. S. A.* 95, 5505–5510. doi:10.1073/pnas.95.10.5505
- Venables, W. N., and Ripley, B. D. (2002). in *Modern applied statistics with S*. Editors J. Chambers, W. Eddy, W. Härdle, S. Sheather, and L. Tierney 4th ed. (New York: Springer). doi:10.1007/978-0-387-21706-2
- Venken, K. J. T., Sarrion-Perdigones, A., Vandeventer, P. J., Abel, N. S., Christiansen, A. E., and Hoffman, K. L. (2016). Genome engineering: drosophila melanogaster and beyond. *Wiley Interdiscip. Rev. Dev. Biol.* 5, 233–267. doi:10.1002/wdev.214
- Wickham, H., François, R., Henry, L., Müller, K., and Vaughan, D. (2023). Dplyr: A grammar of data manipulation. R package version 1.1.0. Available at: CRAN.R-project.org/package=dplyr.
- World Health Organisation (2014). A global brief on vector-borne diseases. Available at: www.who.int (Accessed August 7, 2020).

© 2023 Carabajal Paladino, Wilson, Tng, Dhokiya, Keen, Cuber, Larner, Rooney, Nicholls, Uglov, Williams, Anderson, Basu, Leftwich and Alphey. This is an open-access article distributed under the terms of the [Creative Commons Attribution License \(CC BY\)](https://creativecommons.org/licenses/by/4.0/). The use, distribution or reproduction in other forums is permitted, provided the original author(s) and the copyright owner(s) are credited and that the original publication in this journal is cited, in accordance with accepted academic practice. No use, distribution or reproduction is permitted which does not comply with these terms.