



Erratum: Gelatin/Polycaprolactone Electrospun Nanofibrous Membranes: The Effect of Composition and Physicochemical Properties on Postoperative Cardiac Adhesion

OPEN ACCESS

Approved by:

Frontiers Editorial Office,
Frontiers Media SA, Switzerland

*Correspondence:

Frontiers Production Office
production.office@frontiersin.org

Specialty section:

This article was submitted to
Biomaterials,
a section of the journal
Frontiers in Bioengineering and
Biotechnology

Received: 25 January 2022

Accepted: 25 January 2022

Published: 11 February 2022

Citation:

(2022) Erratum: Gelatin/
Polycaprolactone Electrospun
Nanofibrous Membranes: The Effect of
Composition and Physicochemical
Properties on Postoperative
Cardiac Adhesion.
Front. Bioeng. Biotechnol. 10:862276.
doi: 10.3389/fbioe.2022.862276

Frontiers Production Office *

Frontiers Media SA, Lausanne, Switzerland

Keywords: electrospinning, gelatin, polycaprolactone, postoperative adhesion, cardiac surgery

An Erratum on

Gelatin/Polycaprolactone Electrospun Nanofibrous Membranes: The Effect of Composition and Physicochemical Properties on Postoperative Cardiac Adhesion

by Wang, X., Xiang, L., Peng, Y., Dai, Z., Hu, Y., Pan, X., Zhou, X., Zhang, H., and Feng, B. (2021). *Front. Bioeng. Biotechnol.* 9:792893. doi:10.3389/fbioe.2021.792893

Due to a production error, the image used for **Figure 8** was incorrect. Figure 6 was mistakenly duplicated and used in place of the correct image for **Figure 8**.

The correct **Figure 8** appears below. The publisher apologizes for this mistake. The original version of this article has been updated.

Copyright © 2022. This is an open-access article distributed under the terms of the Creative Commons Attribution License (CC BY). The use, distribution or reproduction in other forums is permitted, provided the original author(s) and the copyright owner(s) are credited and that the original publication in this journal is cited, in accordance with accepted academic practice. No use, distribution or reproduction is permitted which does not comply with these terms.

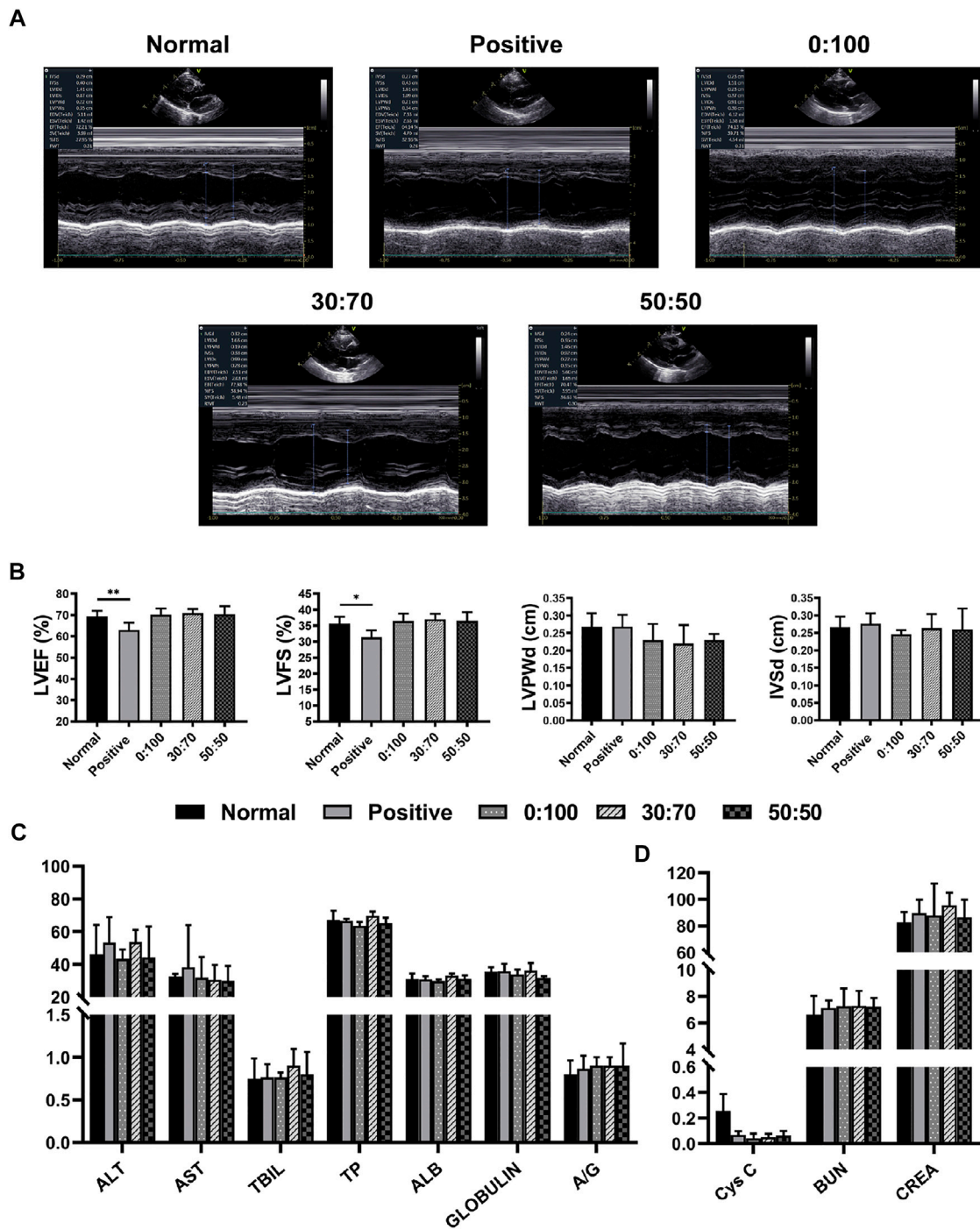


FIGURE 8 | Three months after surgery **(A)** representative echocardiography images, **(B)** heart function and **(C,D)** liver/kidney function for normal and experimental groups. (* $p < 0.05$; ** $p < 0.01$).