



Enzymatic Degradation of Biofilm by Metalloprotease From *Microbacterium* sp. SKS10

Sandeep Kaur Saggu¹, Gopaljee Jha² and Prakash Chandra Mishra^{1*}

¹ Department of Biotechnology, Guru Nanak Dev University, Amritsar, India, ² Plant Microbe Interactions Laboratory, National Institute of Plant Genome Research, New Delhi, India

OPEN ACCESS

Edited by:

Joseph Boudrant,
Centre National de la Recherche
Scientifique (CNRS), France

Reviewed by:

Noha M. Mesbah,
Suez Canal University, Egypt
Ashokkumar Balasubramaniam,
Madurai Kamaraj University, India

*Correspondence:

Prakash Chandra Mishra
pm.biotech@gndu.ac.in

Specialty section:

This article was submitted to
Bioprocess Engineering,
a section of the journal
Frontiers in Bioengineering and
Biotechnology

Received: 15 January 2019

Accepted: 24 July 2019

Published: 07 August 2019

Citation:

Saggu SK, Jha G and Mishra PC
(2019) Enzymatic Degradation of
Biofilm by Metalloprotease From
Microbacterium sp. SKS10.
Front. Bioeng. Biotechnol. 7:192.
doi: 10.3389/fbioe.2019.00192

Enzymes have replaced or decreased usage of toxic chemicals for industrial and medical applications leading toward sustainable chemistry. In this study, we report purification and characterization of a biofilm degrading protease secreted by *Microbacterium* sp. SKS10. The protease was identified as a metalloprotease, Peptidase M16 using mass spectrometry. It showed optimum activity at 60°C, pH 12 and retained its activity in the presence of various salts and organic solvents. The enzyme was able to degrade biofilms efficiently at enzyme concentration lower than other known enzymes such as papain, trypsin and α -amylase. The presence of this protease increased the accessibility of antibiotics inside the biofilm, and was found to be non-cytotoxic toward human epidermoid carcinoma cells (A431) at the effective concentration for biofilm degradation. Thus, this protease may serve as an effective tool for management of biofilms.

Keywords: alkaline protease, *Microbacterium paraoxydans*, metalloprotease, biofilm dispersal, staphylococcal biofilm

INTRODUCTION

Biofilms are a city of microbes (Watnick and Kolter, 2000) that adhere to each other forming complex tertiary structures that stick to a surface (Lopez et al., 2010). The microbial cells are embedded into a self-produced extracellular matrix comprising of polymeric substances such as polysaccharides, proteins, lipids and DNA (Jamal et al., 2015). The cells in biofilms have the capability to mutate and exchange genetic information helping them to survive in severe growth conditions (Singh et al., 2017). They are provided with various benefits such as physical defense from the host immune system and antimicrobials, sorption and storage of nutrients, tolerance to desiccation, and synchronization of virulence factor expression through quorum sensing. Oxygen deficiency and low metabolic activity make bacteria more tolerant to antibiotics (Singh et al., 2017). Rapid changes in pH among layers in biofilms may lead to the aggregation of organic acids and deactivation of the penetrating antimicrobial agents. *Staphylococcus aureus* (*S. aureus*) is one of the leading species in biofilm-associated infections which represent 80% of nosocomial infections. The main component of the *S. aureus* biofilm matrix is polysaccharide intercellular adhesin composed of β -1,6-linked N-acetylglucosamine polymer and many proteins such as protein A, fibrinogen-binding proteins, clumping factor B etc. (Lister and Horswill, 2014).

Various chemicals such as phenols, alcohols, heavy metals and surfactants have been historically used for removal of biofilms (Araujo et al., 2011). Triclosan is one of the bisphenol compounds that have been used to degrade biofilms but this chemical possesses several health hazards such as disruption of mitochondrial function and calcium signaling, and alteration of homeostasis and immunological parameters (Weatherly and Gosse, 2017). Heavy metals such as mercury, silver,

copper, zinc and nickel as well as chlorinated compounds have been used for biofilm dispersal but these chemicals are no longer in use due to their serious health hazards (Teitzel and Parsek, 2003). Due to various limitations of chemicals used for biofilm removal, there is a need to replace chemicals with enzymes.

The enzymes such as glycosidases, proteases and DNases have the potential to degrade the extracellular matrix (Algburi et al., 2017) resulting in release of planktonic cells and its constituents which are more easily accessible to antimicrobials (Fleming and Rumbaugh, 2017). As proteins are one of the major constituents of biofilms, the proteases are considered to be the most potential enzymes for biofilm removal (Lister and Horswill, 2014). Proteases such as aureolysin, proteinase K, spl protease, staphopain A and B produced by staphylococcal strains help in degradation of biofilms (Fleming and Rumbaugh, 2017). LapG secreted by *Pseudomonas putida* triggers the dispersal of biofilms through alteration of exopolysaccharide-binding protein, LapA (Gjermansen et al., 2010).

The present study deals with the purification and characterization of a protease from *Microbacterium* sp. SKS10 that has the potential for biofilm removal. We also report the isolation and characterization of this strain using morphological, biochemical and molecular methods. This study explores the potential of the protease in degrading biofilms and determines its toxicity on cultured human cells.

MATERIALS AND METHODS

Isolation and Screening of Microorganism

The bacterial strain SKS10 was isolated from soil of the Indian west coast region i.e., Mumbai, Maharashtra (19.076 N, 72.877 E), and screened for its ability to hydrolyze casein protein present in skim milk agar plates (pH 10) [peptone (0.1%), sodium chloride (0.5%), agar (2%), and skim milk (10%)] incubated at 37°C using serial dilution method for 48 h. The colonies of bacteria forming a clear zone on these plates were isolated. This pure culture was maintained by subculturing on nutrient agar plates at 37°C and stored as glycerol stocks at -80°C.

Identification of Strain SKS10

Microbacterium sp. SKS10 was characterized by morphological, biochemical and molecular methods. The morphological characteristics of a bacterial colony were observed using a stereomicroscope (Magnus, India). Cell morphology was studied by gram staining method using a brightfield microscope at 40x magnification (Nikon H600L, Japan) and scanning electron microscopy at a magnification of 10,000x (Zeiss Evo LS10, Germany).

The biochemical characteristics were evaluated by carbohydrate utilization tests using HiCarbo kit (HiMedia, India). The capability of strain for secretion of amylase, lipase,

lysine decarboxylase, indole and acetylmethylcarbinol was determined by using respective media (Pammi et al., 2015; Sivanandhini et al., 2015) as per the manufacturer's instructions.

A set of universal bacterial primers for 16S rRNA gene i.e., 8F (5'-AGAGTTTGATCCTGGCTCAG-3') and 1492R (5'-GGTTACCTTGTTACGACTT-3') was used to amplify 16S ribosomal DNA gene of the bacterial isolate by polymerase chain reaction (PCR) for molecular characterization. The gene sequence (sequenced by First Base Laboratories Sdn Bhd, Malaysia) was submitted in GenBank with accession number KY230497. Basic local alignment search tool (BLAST) was used to search GenBank (Johnson et al., 2008), ribosomal database project-II (RDPII) (Maidak et al., 2000) and EzTaxon (Chun et al., 2007) using 16S rRNA gene sequence. The 16S rRNA sequence of the isolated strain showed 100% identity with *Microbacterium paraoxydans*. Mega 7 software was used to build a phylogenetic tree with bootstrap value of 500 replicates by neighbor-joining method using maximum composite likelihood (Kumar et al., 2016). For this analysis, homologous sequences of 16S rRNA gene of *Microbacterium paraoxydans* were retrieved from RDPII database where *Actinocatenispora thailandica* was selected as an out group.

Protease Assay and Protein Estimation

Protease activity was measured by modified Lowry method (Lowry et al., 1951; Boominadhan et al., 2009) whereas protein concentration was estimated by Bradford method (Bradford, 1976). Reaction mixture containing 1% casein (Sisco Research Laboratories Pvt. Ltd., India, www.srlchem.com) as a substrate (400 µl) in 0.1M potassium chloride-sodium hydroxide (pH 12) and purified enzyme (200 µl) was incubated for half an hour at 37°C. The reaction was terminated by addition of 600 µl of 10% trichloroacetic acid (Sisco Research Laboratories Pvt. Ltd., India, www.srlchem.com) followed by incubation for 10 min at room temperature. The reaction mixture was centrifuged at 10,000 g. Supernatant (200 µl) was added to 0.4M sodium carbonate (800 µl) and 1N Folin phenol Ciocalteau reagent (50 µl), incubated for half an hour at room temperature, and the absorbance measured at 660 nm. One unit enzyme activity was defined as the amount of enzyme that is needed to release 1 µg tyrosine per ml per minute under standard assay conditions.

Protease Production and Purification

Microbacterium sp. SKS10 was grown in 50 ml of nutrient broth in an Erlenmeyer flask (250 ml). The protease production was done using 5% inoculum of seed culture in Erlenmeyer flask (1L) having 2% casein in nutrient broth (pH 8) at 30°C with agitation of 150 revolutions per minute for 48 h.

Protein was precipitated from supernatant obtained after centrifugation following 70% ammonium sulfate fractionation (Sisco Research Laboratories Pvt. Ltd., India, www.srlchem.com). The precipitated protein was recovered after centrifugation at 10,000 g for 15 min and dissolved in minimal volume of buffer (pH 8) containing 50 mM Tris and 300 mM sodium chloride. This precipitated partially purified enzyme was further purified by gel permeation chromatography on a Superdex 75 10/300 G column (30 cm*10 mm) at a flow rate of 0.5 ml/min

Abbreviations: NCBI, national center for biotechnology information; BLAST, basic local alignment search tool; RDPII, ribosomal database project II; PCR, polymerase chain reaction; SDS-PAGE, sodium dodecyl sulphate-polyacrylamide gel electrophoresis, GPC, gel permeation chromatography, LB, luria broth; MIC, minimum inhibitory concentration; MBC, minimum bactericidal concentration; MTT, 3-(4,5-dimethylthiazol-2-yl)-2,5-diphenyltetrazolium bromide.

using GE AKTA Prime. The purity of elutes was checked by sodium dodecyl sulfate-polyacrylamide gel electrophoresis (SDS-PAGE) using silver staining method (Sambrook et al., 2001). 1 mg/ml chymotrypsin (25 kDa) was run as a standard on the same gel permeation chromatography column. The purified fractions obtained after gel permeation chromatography were pooled, stored at -20°C and used for protease characterization. Zymogram analysis was used to check protease activity (Section Zymogram Analysis). Specific activity was calculated as enzyme activity per mg protein at each step of purification.

Zymogram Analysis

The activity of proteases in gel was detected using casein zymography (Bester et al., 2010). After electrophoresis, SDS-PAGE containing 0.1% casein was soaked in 2.5% (v/v) Triton X-100 at room temperature for 1 h followed by overnight incubation in 50 mM Tris buffer (pH 8). This gel was stained with Coomassie Brilliant Blue-R250. The appearance of a zone of clearance was considered as the existence of protease activity. SDS-PAGE, as well as, zymography was performed under reducing (Gel loading dye containing 2-mercaptoethanol at 20 mM concentration) and non-reducing (Gel loading dye without 2-mercaptoethanol) conditions to investigate the role of disulphide bonds in protease activity.

Protease Characterization

To study thermostability of the enzyme, the enzyme was preheated for 30 min at different temperatures ($20-80^{\circ}\text{C}$) followed by protease activity under standard assay conditions. The time period up to which the protease was thermostable was determined by incubating the protease at 60°C for different time intervals from 30 to 180 min (30, 60, 90, 120, 150, and 180 min) before measuring protease activity. The effect of pH on enzyme activity was determined by varying the pH of the assay mixture using various buffer systems at 0.1 M concentration under standard assay conditions. Various buffers used were: potassium phosphate buffer (pH 6, 7, and 8), carbonate-bicarbonate buffer (pH 9 and 10), sodium bicarbonate-sodium hydroxide buffer (pH 11) and potassium chloride-sodium hydroxide (pH 12). The optimum temperature for protease activity was evaluated by incubating the reaction mixture at optimum pH (pH 12) for 30 min at different temperatures ($20-80^{\circ}\text{C}$).

The effect of metal salts on the enzyme activity was investigated by incubating the reaction mixture with chloride salts of various metal ions (Na^+ , Li^+ , Mg^{2+} , K^+ , Ba^{2+} , Ca^{2+} , Mn^{2+} , Cd^{2+} , Zn^{2+} , Fe^{3+} , and Co^{2+}) at 10 mM concentration for 30 min. An equal volume of water was added instead of metal salts in the control reaction. To examine the effect of various solvents on protease activity, the reaction mixture was incubated with various solvents (ethyl acetate, formamide, carbon tetrachloride, methanol, ethylene glycol, dodecane, hexadecane, isopropanol, toluene, petroleum ether, N, N-Dimethyl formamide, chloroform, acetone, isoamyl alcohol and isobutanol) at 10% (v/v) under standard assay conditions. Water was used as the solvent in the control reaction. Substrate specificity of the purified protease was determined

using casein, bovine serum albumin and gelatin as substrates at 1% concentration under standard assay conditions.

The condition having the maximum activity of protease was considered as 100% for each experiment, and the activities in other conditions were plotted as relative percentages.

Enzyme Kinetics

The rate of enzymatic reaction was measured by using casein as a substrate. The purified enzyme was incubated with different concentrations of buffered casein ranging from 0.1% to 1% for 30 min at 37°C and protease activity was assayed using above mentioned protocol (Section Protease Assay and Protein Estimation). A Lineweaver-Burk plot showing $1/V_o$ (Y-axis) vs. $1/[S]$ (X-axis) was plotted to calculate Michaelis-Menten constant (Km) and maximum reaction velocity (V_{max}) values.

Protease Identification by Mass Spectrometry

The purified protease was separated on 12% SDS-PAGE and visualized using silver staining. The protein band was excised from gel and digested with trypsin using trypsin profile IGD kit (Sigma-Aldrich, India). The peptides obtained after trypsin digestion were analyzed by Matrix-assisted Laser Desorption Ionization-Time of Flight (MALDI-TOF) analyzer (Applied Biosystems, USA). The tandem mass spectrometry (TOF/TOF) data obtained was evaluated by online software search engine i.e., MASCOT by searching in Bacteria (Eubacteria) database. The sequence of the identified protein was retrieved from UniProt (UniProt Consortium, 2014) and used for domain and sequence analysis. The domain analysis was done using Conserved Domain Database (Marchler-Bauer et al., 2014), Pfam (Bateman et al., 2004) and Interpro (Hunter et al., 2008). Its structure was predicted using homology modeling by Swiss model using structure of secreted protease C (1K7Q) as a template having more than 30% identity (Schwede et al., 2003).

Biofilm Removal

Biofilm Formation

Staphylococcus aureus MTCC 11949 procured from Microbial Type Culture Collection, Pune, India was grown in Luria-Bertani (LB) broth for biofilm formation assays. To study maximum biofilm formation, various media such as LB broth, nutrient broth, tryptone water and modified basal media (0.5% glucose, 0.5% peptone, and 0.5% sodium chloride) were used for biofilm assays. The duration of biofilm formation was optimized by incubating *S. aureus* in various media for 24, 48, and 72 h at 37°C in 12 well-tissue culture (TC) plates (1 ml per well) under stationary conditions to observe the maximum formation of biofilm.

Biofilm Staining

The effect of protease on bacterial biofilm was investigated by inoculating 1 ml of *S. aureus* culture (0.1 OD_{600}) grown in LB medium (pH 7) in 12 well plate (Corning Inc., India). The plate was incubated at 37°C for 72 h to allow formation of biofilm. After 72 h, the LB medium in each well of plate was replaced with fresh LB medium containing protease ($10 \mu\text{g/ml}$). This plate

was further incubated for 24 h where a well containing only LB medium without protease was considered as control. Congo red solution (final concentration of 50 $\mu\text{g/ml}$) was used to stain the preformed biofilm (Baidamshina et al., 2017).

The quantification of biofilm formation was done by using modified crystal violet assay (Sharma et al., 2015). Hundred microliter of bacterial suspension (0.1 OD₆₀₀) was inoculated in 96-well polystyrene microtiter plate (Tarsons Product Pvt. Ltd., India) for 72 h to allow biofilm formation. The used medium was replaced with fresh LB medium containing protease at different concentrations (10 $\mu\text{g/ml}$, 100 $\mu\text{g/ml}$ and 1,000 $\mu\text{g/ml}$) followed by incubation for 24 h at 37°C. For crystal violet staining, culture supernatant was removed and the wells were washed gently with phosphate buffered saline (PBS) to remove loosely bound bacterial cells. The adherent cells were fixed by using 100 μl of methanol (HiMedia, India) for 20 min after which the plate was air dried. The fixed biofilms were stained with 100 μl of 1% crystal violet (HiMedia) in distilled water for 20 min. The plate was washed with water to remove the excess stain. The cell bound crystal violet was extracted using 100 μl of 30% glacial acetic acid (HiMedia, India) in distilled water, and the absorbance measured at 595 nm using a Multiskan Ascent microplate reader (Thermo, Electron Corporation, USA). Cell free medium was used as a control.

Assessment of Antibacterial Activity

Minimum inhibitory concentration (MIC) and minimum bactericidal concentration (MBC) of antibiotic (kanamycin) on *S. aureus* MTCC 11949 was evaluated using standard protocols (Baidamshina et al., 2017). MIC was evaluated as the lowest concentration of kanamycin that was sufficient to prevent visible bacterial growth (no turbidity) after 24 h of incubation. MIC of kanamycin was evaluated by broth microdilution method to vary the concentration of kanamycin (256–0.5 $\mu\text{g/ml}$) by two fold serial dilution. These wells were inoculated with 200 μl of bacterial suspension (0.1 OD₆₀₀) followed by incubation at 37°C for 24 h. The plates were then checked for visible bacterial growth.

MBC was determined as the lowest concentration of kanamycin necessary to kill 99.9% of bacteria. This is based on subculturing of bacterial inoculum (5 μl) from the MIC wells that showed no visible growth into 5 ml of fresh LB broth followed by incubation for 24 h at 37°C (Baidamshina et al., 2017) in a shaker incubator.

Accessibility of Antibiotic in Biofilm

The accessibility of antibiotic in biofilm matrix in the presence and absence of protease was evaluated using drop plate assay (Herigstad et al., 2001) and confocal microscopy (Peak et al., 2010).

Drop plate assay

The biofilm was formed by incubating staphylococcal culture for 72 h at neutral pH (pH 7) as described above (Section Biofilm Formation). The biofilms were treated with either protease (10 $\mu\text{g/ml}$), or antibiotic (at 1x, 2x, 4x, and 8x MBC concentrations) or a combination of protease and antibiotic

for 24 h at 37°C. The wells were washed gently with 0.9% sodium chloride for removal of non-adherent cells. The cells entrenched in biofilms were suspended in 0.9% sodium chloride by scraping the bottom of the wells by repeated pipetting to help breakdown of bacterial aggregates. Hundred microliter of planktonic bacterial suspension was pipetted into an eppendorf having 900 μl of sterile 0.9% sodium chloride. Fifty microliter of this suspension was dispensed on LB agar plates as 10 μl drops. The last two drops were used to enumerate the colony forming units having countable number of colonies.

Biofilm assay with confocal microscopy

The viability of biofilm-embedded cells was evaluated by modified live/ dead staining method using confocal microscopy (Peak et al., 2010). In this assay, biofilms were formed on coverslips in 12 well plates upon 72 h incubation. After biofilm formation, cells were treated in a similar set of experiments as mentioned in drop plate assay except that only one concentration of antibiotic (8x MBC) was used in confocal microscopy.

After treatment for 24 h at 37°C, the plates were decanted and the glass coverslips were washed with phosphate buffered saline (PBS) to remove non-adherent cells. The samples were stained for 15 min with fluorescein diacetate (Sigma-Aldrich, India) and propidium iodide (Sigma-Aldrich, India) each at a final concentration of 10 $\mu\text{g/ml}$. After staining, the cells were washed twice with phosphate buffered saline (PBS) and mounted on glass slides using fluoromount (Sigma-Aldrich, India). Images were captured using Nikon A1R confocal microscope at 60x magnification.

Cytotoxicity Assay

Human epidermoid carcinoma cells (A431 cells) were obtained from National Centre for Cell Science, Pune, India. The cells were cultured in Dulbecco's Modified Eagle Medium supplemented with 10% fetal bovine serum (pH 7.4) and 1X antibiotic-antimycotic mix (Gibco Thermo Fisher Scientific, India) at 37°C and 5% CO₂. The cells were seeded (20,000 cells/ml) in 96-well tissue culture plates and incubated overnight. Cell viability was tested in the presence of protease at various concentrations using 3-(4,5-dimethylthiazol-2-yl)-2,5-diphenyltetrazolium bromide (MTT) assay (Hansen et al., 1989). MTT (yellow) is bio-reduced by mitochondrial dehydrogenase of viable cells into a purple colored product (formazan) which was measured at 595 nm.

The morphological changes in A431 cells due to treatment with purified protease were studied by phase contrast microscopy using Evos FL cell imaging system. The effect of protease treatment on A431 cells was analyzed for 24 and 48 h by growing them on glass coverslips in the presence of protease. Treated cells were stained and visualized as above (Biofilm Assay With Confocal Microscopy).

Statistical Analysis

Values in **Figures 3, 5, 7** are represented as mean \pm standard error of mean acquired from three replicates.

RESULTS AND DISCUSSION

Isolation, Identification and Characterization of *Microbacterium* sp. SKS10

An alkaline protease producing bacterial strain was isolated from soil of west coast region of India. Colonies of bacteria showed a zone of clearance on skim milk agar plates (pH 10) stained with congo red (**Figure 1A**). The shape and

morphology of bacterial colonies was observed as entire, opaque, smooth and yellowish-orange on nutrient clerigel plates under a stereomicroscope (**Figure 1B**). The cells were gram-positive and short rods as observed by gram staining (**Figure 1C**) and scanning electron microscope (**Figure 1D**), respectively. The molecular characterization of the strain was performed by sequencing of PCR amplified 16S rRNA gene using universal bacterial primers. The sequence of 16S rRNA having 1331 base pairs was deposited to GenBank

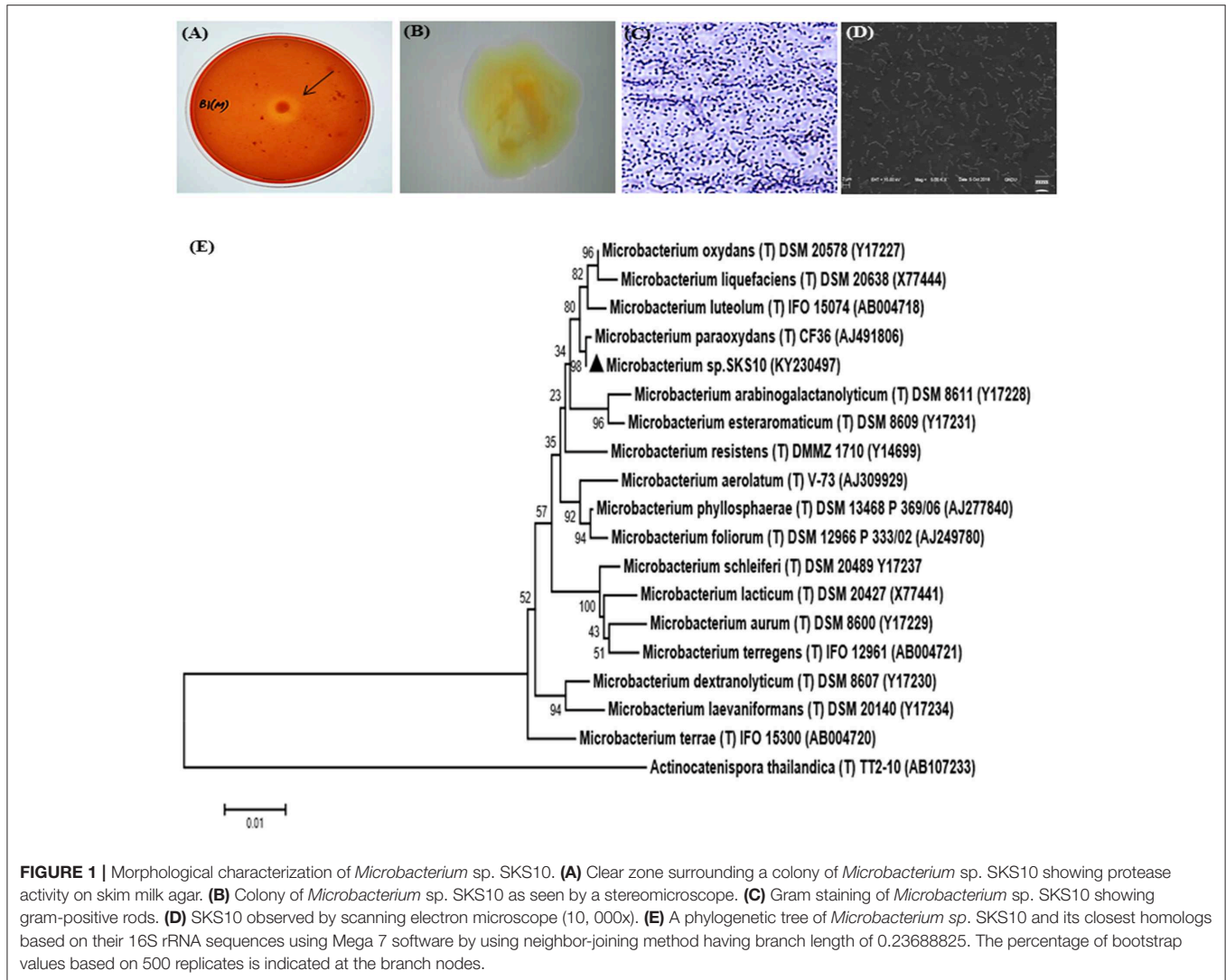


TABLE 1 | Purification of protease from *Microbacterium* sp. SKS10.

Purification step	Total activity (U) ^a	Total protein (mg) ^b	Specific activity (U/mg)	Yield (%)	Fold purification
Crude enzyme	2004.8	65.2	30.748	100	1
Ammonium sulfate precipitation	1317.5	37.809	34.847	65.7	1.13
Gel permeation chromatography	35.568	0.222	160.21	1.77	5.21

^aEnzyme activities were determined by using casein as a substrate spectrophotometrically at 660 nm.

^bThe protein concentration was estimated using Bradford's method.

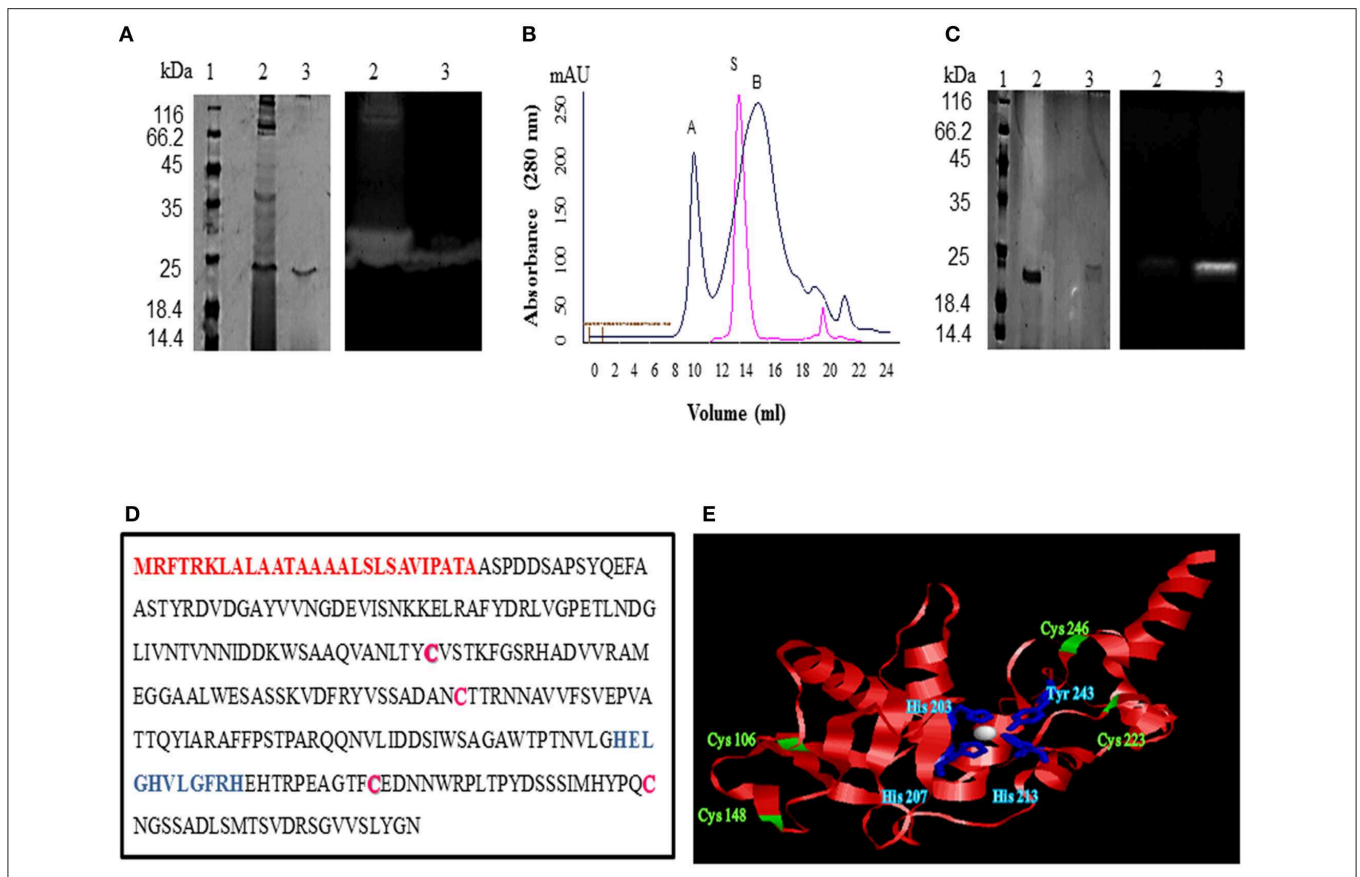


FIGURE 2 | Purification and identification of protease from *Microbacterium* sp. SKS10. **(A)** 12% SDS-PAGE (left) and casein zymogram (right) of ammonium sulfate precipitated and GPC purified protease [Lane 1: molecular weight marker, lane 2: ammonium sulfate precipitated fraction, lane 3: GPC purified protease (peak B from **B**)]. **(B)** Overlay of elution profiles of protease (black) and chymotrypsin (red) on gel permeation chromatography. **(C)** 12% SDS-PAGE (left) and casein zymogram (right) of protease under reducing and non-reducing conditions. (Lane 1: molecular weight marker, lane 2: protease in reducing conditions, lane 3: protease in non-reducing conditions). **(D)** Protein sequence of protease identified as Peptidase M16 by mass spectrometry. Signal peptide (1-27) is shown in red, cysteine residues are in pink whereas HEXXHXXGXH motif is highlighted in blue. **(E)** Structure modeled by Swiss-model using secreted protease C as a template. Cysteine residues are shown in green and residues His 203, His 207, His 213 and Tyr 243 chelating Zn (white sphere) are shown in blue.

with accession number KY230497 (<https://www.ncbi.nlm.nih.gov/nuccore/KY230497.1>). The sequence was searched in RDP-II, EzTaxon and GenBank database using BLAST. BLASTn result at National Centre for Biotechnology Information (NCBI) database showed 100% sequence identity to a sequence of *Microbacterium paraoxydans* strain DAS46. Results from EzTaxon, a database for 16S ribosomal DNA sequences of “type strains” showed 99.77% sequence identity to *Microbacterium paraoxydans* NBRC 103076 (T). Similarity search against RDP-II, a database of 16S ribosomal DNA sequences of both “type and non-type strains” showed 99.45% identity to *Microbacterium paraoxydans* CF36 (T). This strain belongs to the phylum Actinobacteria, class Actinobacteria, subclass Actinobacteridae, order Actinomycetales, suborder Micrococineae, family Microbacteriaceae and genus *Microbacterium*. The phylogenetic analysis using sequences of nearest homologs retrieved from RDP-II database showed presence of *Microbacterium* sp. SKS10 in a cluster with *Microbacterium paraoxydans* CF36 (T) in

the phylogenetic tree constructed using neighbor-joining method (**Figure 1E**).

The biochemical characterization of strain SKS10 was performed using HiCarbo kit. *Microbacterium* sp. SKS10 was able to utilize glycerol, salicin, esculin, citrate, and malonate among all the carbohydrates available in HiCarbo kit (**Table S1**). Laffineur et al. (2003) reported that *Microbacterium paraoxydans* CF36, the nearest homolog of SKS10 in RDP-II database was able to utilize lactose, maltose, fructose, mannose, α -methyl-D-glucoside, Rhamnose and D-arabinose whereas *Microbacterium* sp. SKS10 was unable to utilize these indicating the difference between two strains. The strain SKS10 could produce an extracellular protease but was unable to secrete other enzymes such as amylase, lipase and lysine decarboxylase (**Table S2**). This strain did not secrete stable acids, acetylmethylcarbinol and indole as observed by methyl red test, voges proskauer and tryptone water test, respectively, whereas no information regarding these tests was provided by Laffineur et al. about the strain CF36 (**Table S2**).

TABLE 2 | List of domain hits with their description.

Database	Domain hits (Interval)	Description
Conserved Domain database- NCBI (Marchler-Bauer et al., 2014)	ZnMc_BMP1_TLD (203-243)	Zinc dependent metalloproteases
	Astacin (203-243)	Requires zinc for catalysis and has two conserved disulphide bridges. It has N-terminal propeptide which cleaves to release active protease.
	ZnMc (94-218)	Zinc dependent metalloprotease having HEXXH zinc binding site
Pfam (Bateman et al., 2004)	Peptidase_M_10 (102-268)	Cleaves peptides and require zinc for catalysis
	Peptidase_M57 (85-267)	Dual action HEIGH metallopeptidase
InterPro (Hunter et al., 2008)	IPR024079 (77-269)	Metallopeptidase activity
	IPR024653 (114-214)	Represents metallopeptidase M10, M27 and M57. The catalytic triad is HE-H-H and many members have the sequence motif HEIGH.
	IPR006026 (91-246)	Presence of HEXXH motif which forms a part of metal binding site

Protease Purification

The crude enzyme precipitated from the culture supernatant of 70% ammonium sulfate fraction resulted in a yield of 65.717% and specific activity of 34.847 U/mg (1.13 fold purification) (Table 1). A zymogram of this preparation showed two clear zones corresponding to a high (>66 kDa) and a low molecular weight (~25 kDa) suggestive of the presence of two proteases (Figure 2A). The partially purified proteins obtained after ammonium sulfate precipitation were further purified by gel permeation chromatography (GPC) where chymotrypsin (25 kDa) was used as a standard. Two peaks eluted before (A) and after (B) chymotrypsin (Figure 2B). Peak A showed multiple bands on SDS-PAGE (data not shown) and was not used for further analysis. Peak B showed a single band (~25 kDa) on silver stained SDS-PAGE and had protease activity as depicted by a single clear zone in the zymogram (Figure 2A). The specific activity and yield of the protease in this fraction were 160.21 U/mg and 1.77%, respectively, with 5.21 fold purification. This fraction was stored at -20°C and used for all enzyme characterization and biofilm assays.

A difference in mobility of the purified enzyme on SDS-PAGE under reducing and non-reducing conditions was observed indicating the presence of intra-chain disulphide bonds. The protease activity was lost under reducing conditions as visible in the zymogram proving that these disulphide linkages are important for protease activity (Figure 2C).

Identification of Protease

A single protein band from silver stained SDS-PAGE was excised, trypsinized and used for mass spectrometry to identify the protease. The mass fingerprint obtained by tandem mass spectrometry was searched in bacterial protein database using MASCOT (Figure S1) which resulted in Peptidase M16 (*Microbacterium*) as the first hit (Figure 2D). The amino acid sequence of this peptidase (UniProt ID: A0A1H1U687) (molecular weight 29 kDa) was retrieved from the database. Removal of the signal sequence (1-27) present at the N-terminus (Figure 2D) of this protein would result in a processed protease (28-269) of a predicted molecular weight (26.4 kDa) similar to that observed in GPC (Figures 2A,B). However, this protease

runs slightly below 25kDa band on SDS-PAGE. There are several proteins which run at the different molecular weight on SDS-PAGE from its predicted molecular weight. For example, Zebra fish nucleolar protein Def and human p53 showed a difference of 13 kDa and 9.3 kDa, respectively, in the predicted and SDS PAGE determined molecular weight (Lane and Crawford, 1979; Linzer and Levine, 1979; Guan et al., 2015). Domains and motifs predicted using various databases (Table 2) revealed the presence of a zinc-binding motif i.e., HEXXHXXGXXH (Figure 2D) in its sequence. Four cysteine residues in the protein sequence seemed to be involved in disulphide bond formation (C 106, C246, C148, C223). The presence of disulphide bonds is a characteristic of Astacin family of metallopeptidases, and the HEXXH motif and metallopeptidase activity is found in Astacin, ZnMc, Peptidase_M57, IPR024653 and IPR006026. The structure of protein modeled using secreted protease C as a template (Figure 2E) suggested that residues such as His 203, His 207, His 213 and Tyr 243 bind to a zinc ion (Figure 2E). Cys 106 and Cys 246 are present in close proximity to Cys 148 and Cys 223, respectively, suggesting that these pairs may form disulphide bonds. Our results suggest this protease to be a metallo-peptidase.

Characterization of Protease

The GPC purified metalloprotease having specific activity of 160.21 U/mg was used for protease characterization (Figure 3). The protease was observed to be stable at a wide range of temperatures ranging from 20 to 60°C on pre-incubation of the enzyme at temperatures ranging from 20 to 80°C (Figure 3A). The protease was determined to be stable at 60°C as it retained 95% and 57% of its activity after incubation at this temperature for 1 and 2 h, respectively (Figure 3B). Prolonged incubation (180 min) at 60°C led to 80% decline in enzyme activity. The protease showed its maximum activity at pH 12 and 60°C when the reaction mixture was incubated at pH varying from 6 to 12 (Figure 3C) and a range of temperatures varying from 20 to 80°C (Figure 3D), respectively. These results suggest its application in industries requiring moderate heat and alkaline conditions.

This protease was quite stable in chloride salts of lithium, magnesium, potassium, barium, and sodium as it retained more than 85% of its activity in their presence whereas the enzyme

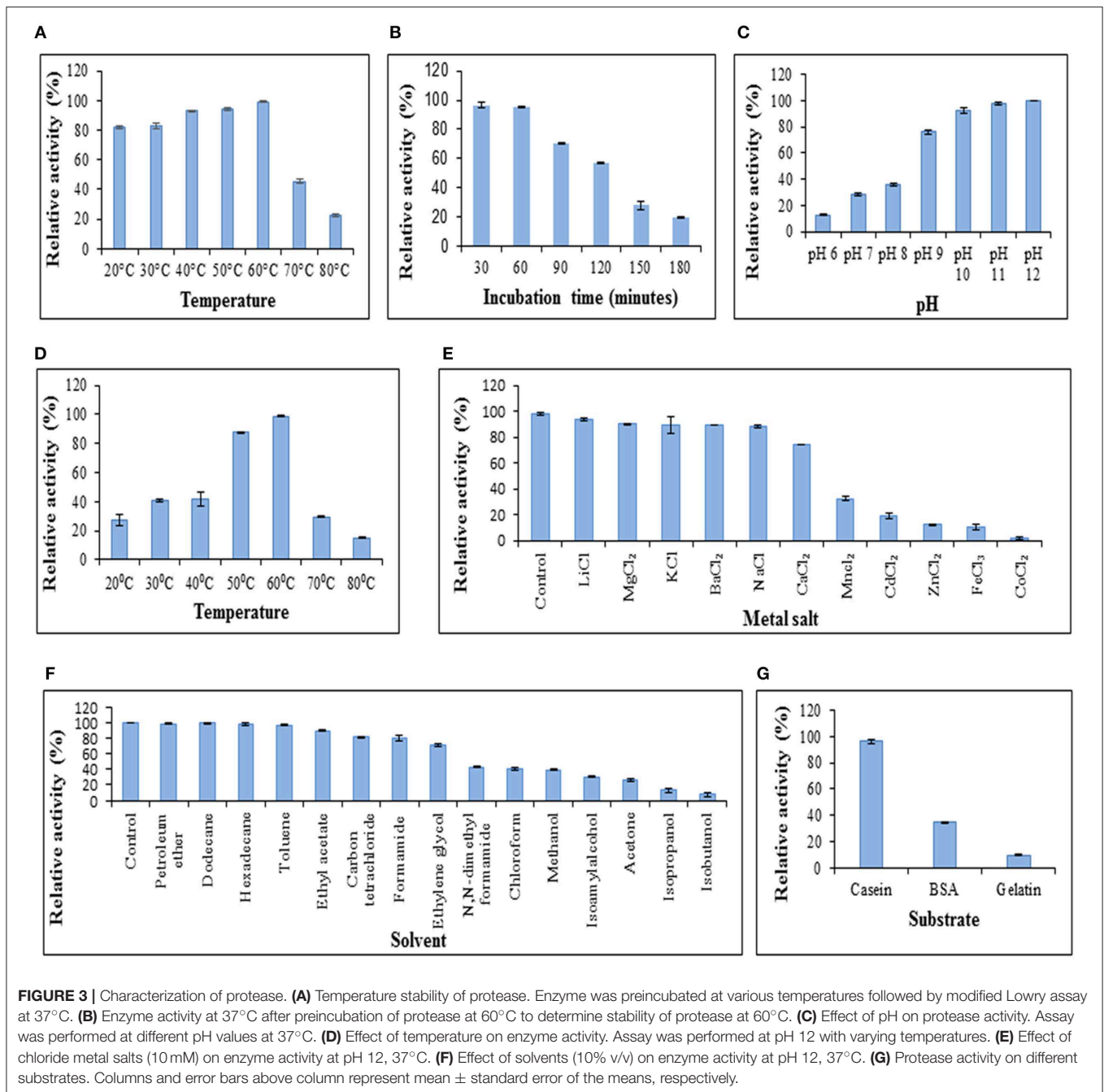


FIGURE 3 | Characterization of protease. **(A)** Temperature stability of protease. Enzyme was preincubated at various temperatures followed by modified Lowry assay at 37°C. **(B)** Enzyme activity at 37°C after preincubation of protease at 60°C to determine stability of protease at 60°C. **(C)** Effect of pH on protease activity. Assay was performed at different pH values at 37°C. **(D)** Effect of temperature on enzyme activity. Assay was performed at pH 12 with varying temperatures. **(E)** Effect of chloride metal salts (10 mM) on enzyme activity at pH 12, 37°C. **(F)** Effect of solvents (10% v/v) on enzyme activity at pH 12, 37°C. **(G)** Protease activity on different substrates. Columns and error bars above column represent mean \pm standard error of the means, respectively.

activity decreased to 1.88% in the presence of cobalt (II) chloride (Figure 3E). The protease also retained more than 85% activity in the presence of petroleum ether, dodecane, hexadecane, toluene and ethyl acetate using solvents at 10% concentration (v/v) whereas activity got declined to 13.31% and 7.41% in the presence of isopropanol and isobutanol, respectively (Figure 3F). In a similar report, the keratinolytic serine protease produced by *Streptomyces* sp. strain AB1 showed stability in the presence of ethyl acetate whereas isopropanol and butanol inhibited the enzyme activity (Jaouadi et al., 2010).

The effect of enzyme action on various substrates was analyzed. It was observed that the protease showed its maximum

activity (100%) when casein was used as a substrate (Figure 3G) and retained up to 34.22 and 9.678% activity using bovine serum albumin and gelatin, respectively. The proteases secreted by *Chryseobacterium indologenes* TKU014 also showed higher activity toward casein (Wang et al., 2008).

The K_m and V_{max} values of this protease from *Microbacterium* sp. SKS10 were calculated as 0.577 mg/ml and 17.2413 U/ml, respectively, using casein as a substrate by Lineweaver-Burk plot (Figure 4). K_m of a protease secreted by *Rhizopus oryzae* (7 mg/ml) was high (Mushtaq et al., 2015) proving that the protease used in the present study has a higher substrate affinity as compared to the protease reported by

Mushtaq et al. However, K_m values were quite comparable with that of a thermoactive protease secreted by *Bacillus* sp (Jain et al., 2012).

Biofilm Removal by Protease

Various chemical strategies have been in use for biofilm removal since years but these chemicals possess various health as well

as environmental hazards. Due to limitations of chemicals used for biofilm removal, chemical strategies can be replaced with enzymatic methods.

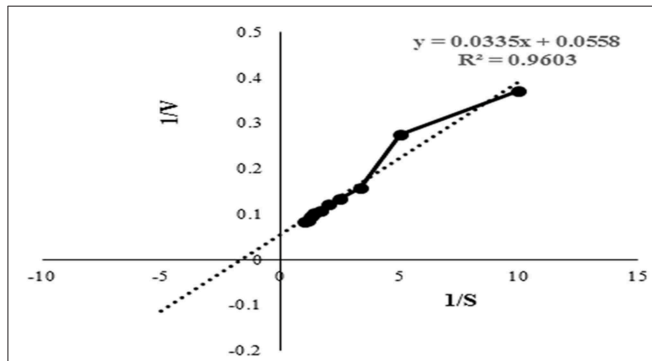
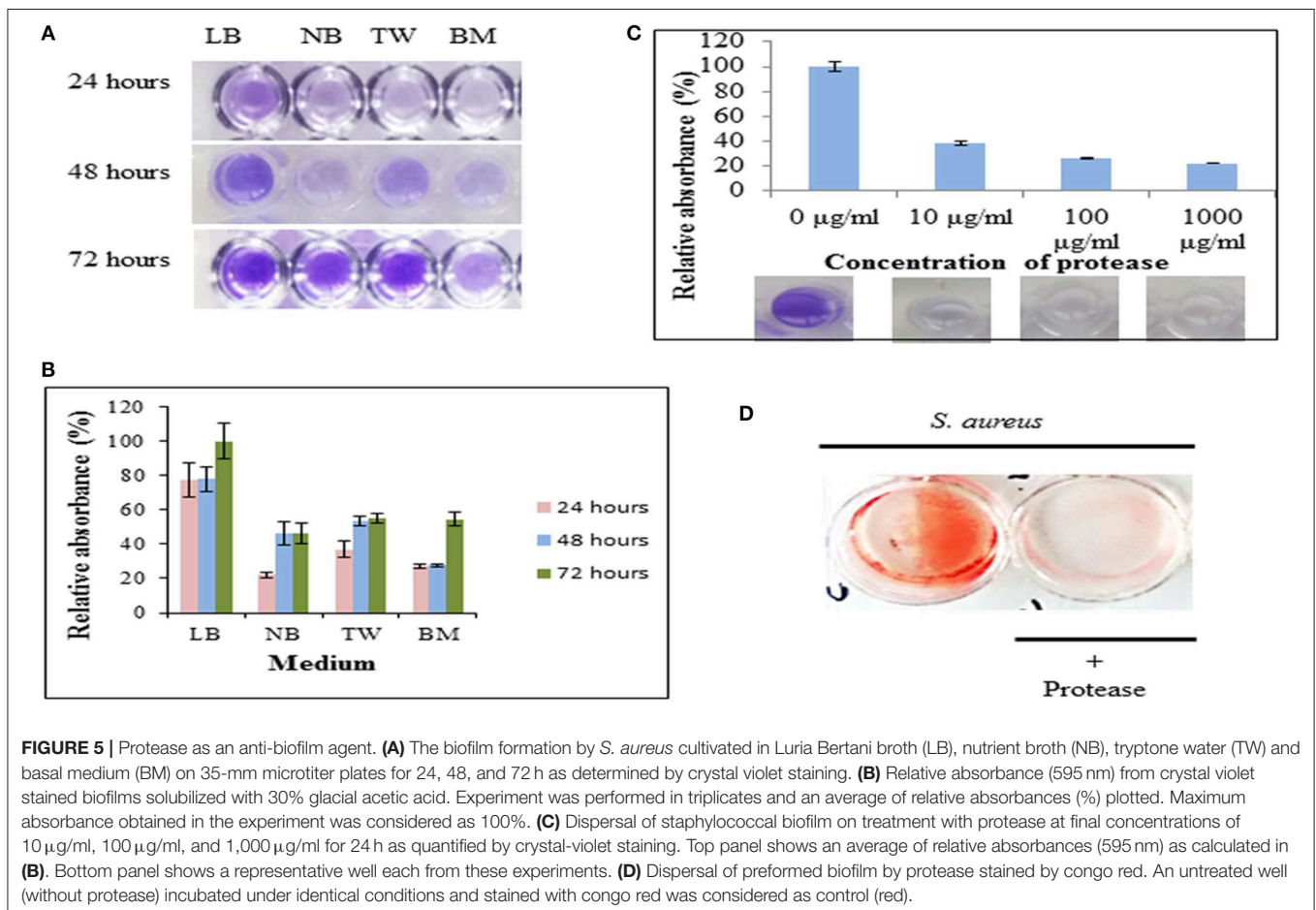


FIGURE 4 | Lineweaver-Burk plot used to determine the kinetic parameters such as K_m and V_{max} . Intercepts on X and Y axis were used to determine $1/K_m$ and $1/V_{max}$, respectively.

TABLE 3 | Enzymatic removal of biofilms.

S. No.	Enzyme	Concentration	% Biofilm removal	References
1	Papain or Trypsin	100 $\mu\text{g/ml}$	20–30%	Trizna et al., 2016
		1,000 $\mu\text{g/ml}$	50–60%	
2	α -Amylase	1 mg/ml	64%	Craigien et al., 2011
		2 mg/ml	68%	
		10 mg/ml	80%	
		20 mg/ml	81%	
3	rChymotrypsin	10 $\mu\text{g/ml}$	51%	Harris et al., 2013
		1 mg/ml	70%	
4	DNaseI	1 mg/ml	70%	Tetz et al., 2009
5	AcylaseI	5 $\mu\text{g/ml}$	9%	Kim et al., 2013
6	Proteinase K	100 $\mu\text{g/ml}$	56.6%	Kim et al., 2013
7	Protease	10 $\mu\text{g/ml}$	62%	

Bold values indicate the protease of Microbacterium sp. SKS10.



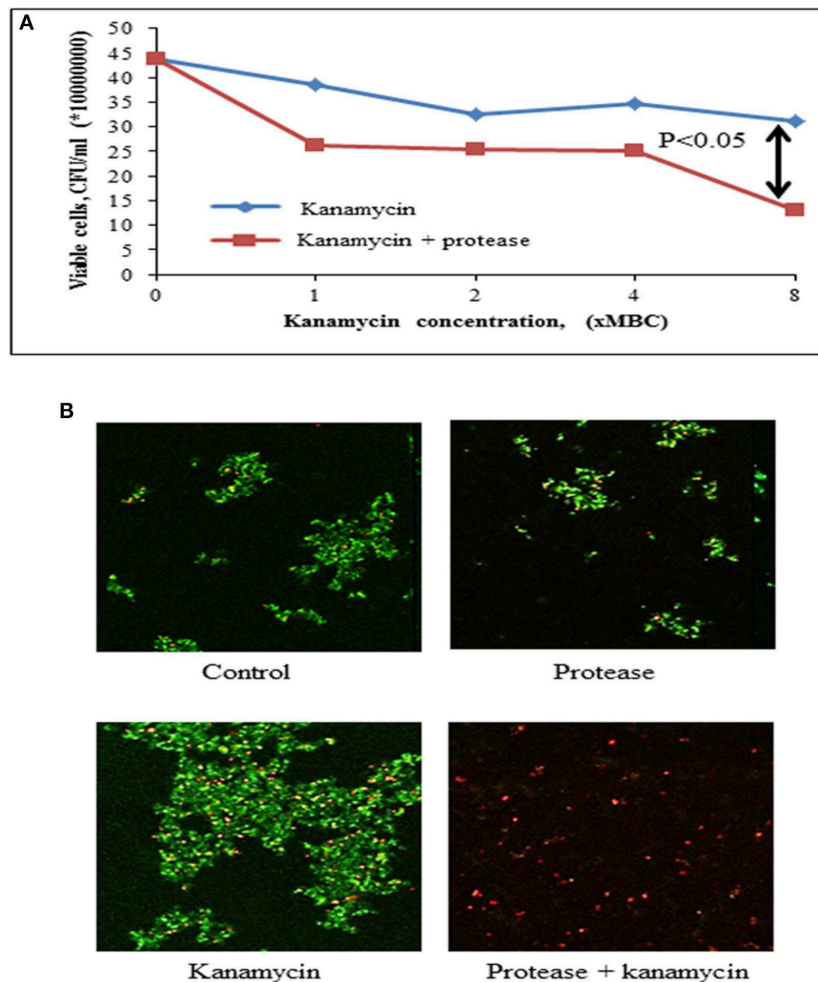


FIGURE 6 | Effect of protease treatment on accessibility of kanamycin against biofilm embedded *Staphylococci*. **(A)** Cell viability post treatment (24 h) with kanamycin (8x MBC) or kanamycin (8x MBC) + protease (10 μ g/ml) in a drop plate assay. The adherent cells were scraped and suspended in sterile 0.9% NaCl, dispensed as 10 μ l drops on LB agar and CFUs counted from last two drops. **(B)** Preformed biofilms of *S. aureus* on glass coverslips were incubated for 24 h in the presence of protease (10 μ g/ml) and kanamycin (8x MBC), and analyzed with confocal microscopy after live (green)/ dead (red) staining using fluorescein diacetate and propidium iodide.

TABLE 4 | Percent difference in viability of cells in biofilm on treatment with kanamycin (x MBC) alone or kanamycin in combination with protease.

S. No.	Protease in combination with kanamycin (x MBC)	% Difference in viability using kanamycin alone or kanamycin in combination with protease
1	1x MBC	32.16%
2	2x MBC	21.72%
3	4x MBC	27.76%
4	8x MBC	58.01%

In this study, the protease was able to degrade biofilms formed by *S. aureus* as observed by modified crystal violet assay (Figure 5). The formation of staphylococcal biofilm was studied in various media such as LB broth, nutrient

broth, tryptone water and basal media for 24, 48, and 72 h (Figure 5A). It was observed that staphylococcal biofilm was best formed in LB medium (pH 7) (Figure 5B). This protease was able to degrade biofilms up to 61.923, 73.732, and 77.728% on treatment at 10 μ g/ml, 100 μ g/ml, and 1,000 μ g/ml concentrations, respectively (Figure 5C). Previous reports suggest that enzymes (at concentration of 1 mg/ml) such as papain, trypsin (Trizna et al., 2016), α -Amylase (Craigie et al., 2011) and DNaseI (Tetz et al., 2009) were able to degrade biofilms by 50–60% (Table 3). Our results showed that this metalloprotease was effective in biofilm degradation at 100 times lower concentration as compared to these enzymes.

The *S. aureus* biofilm matrix consists of host factors, secreted and lysis-derived proteins, polysaccharides and DNA. Hydrolysis of protein components from the extracellular matrix of biofilms by protease was observed using congo red, a dye used to stain amyloid proteins (Figure 5D). The control wells (only bacteria in

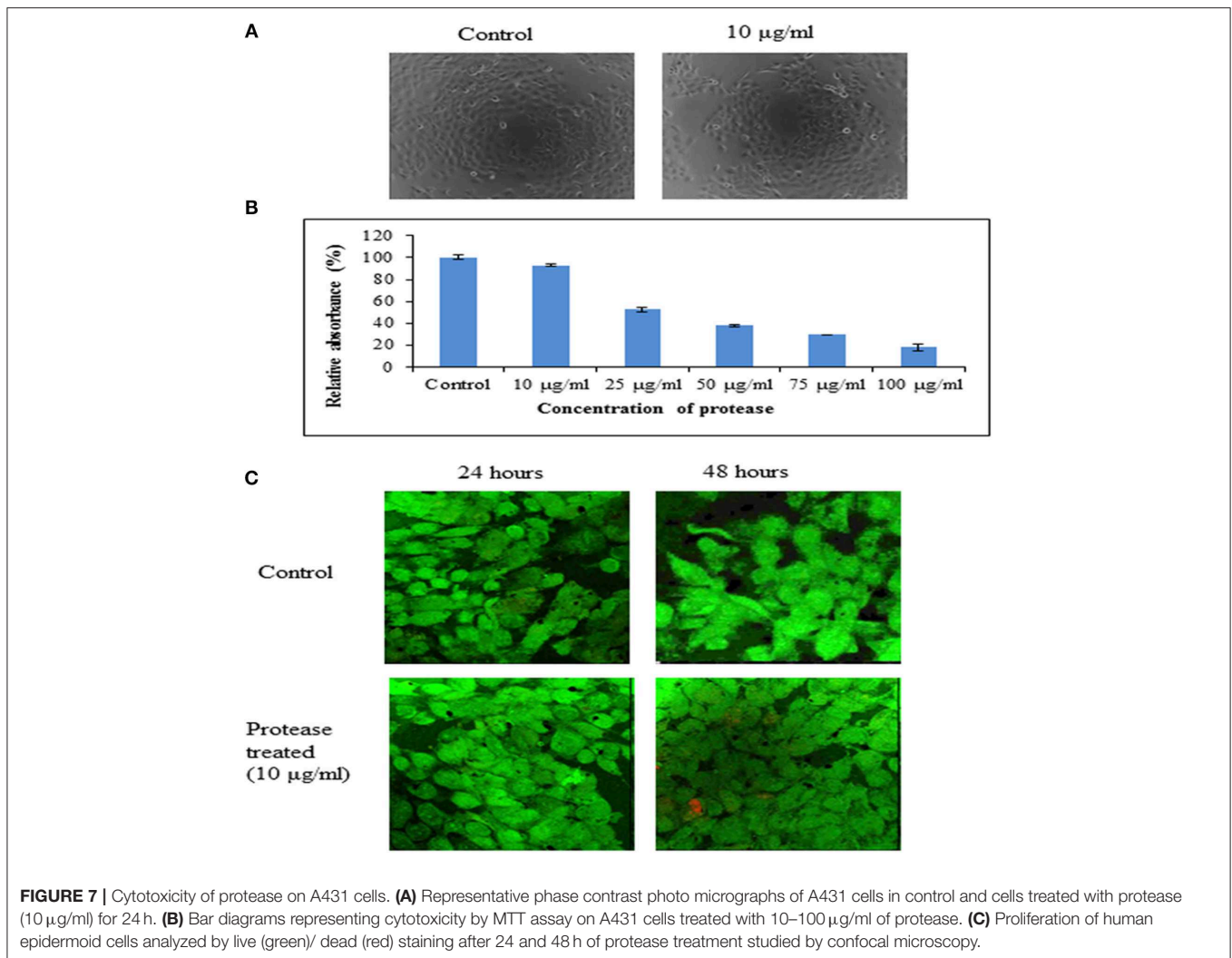


FIGURE 7 | Cytotoxicity of protease on A431 cells. **(A)** Representative phase contrast photo micrographs of A431 cells in control and cells treated with protease (10 µg/ml) for 24 h. **(B)** Bar diagrams representing cytotoxicity by MTT assay on A431 cells treated with 10–100 µg/ml of protease. **(C)** Proliferation of human epidermoid cells analyzed by live (green)/ dead (red) staining after 24 and 48 h of protease treatment studied by confocal microscopy.

absence of protease) stained red with congo red whereas presence of protease showed a decrease in staining intensity signifying degradation of the extracellular matrix.

Enhancement of Accessibility of Antimicrobials by Protease

The bacteria embedded into matrix of biofilm are inaccessible to antibiotics. The enhancement of accessibility of antimicrobials by protease treatment was determined by drop plate assay and confocal microscopy. *S. aureus* is reported to be sensitive to kanamycin (Pengov and Ceru, 2003). MIC and MBC values of kanamycin were determined by broth microdilution method for planktonic *S. aureus* MTCC 11949 as 4 and 8 µg/ml, respectively. Kanamycin, when used alone at various concentrations (1x MBC–8x MBC) did not affect the viability of bacterial cells in biofilm probably due to poor penetration of antibiotic in the biofilm (Figure 6A). The viability of bacterial cells in the biofilm decreased significantly on treatment of cells with kanamycin (8x MBC) in the presence of protease (10 µg/ml). This may be due to better penetration of kanamycin in biofilm after

degradation of the protein backbone of extracellular matrix by protease treatment, thus killing the bacteria embedded in biofilms (Table 4). Treatment of biofilm with protease (10 µg/ml) alone did not affect the viability of bacteria as tested in a drop plate assay, demonstrating that it was non-toxic to cells (Figure 6A). Cell viability was also observed by live/dead staining using fluorescein diacetate and propidium iodide by confocal microscopy. Cells treated with protease (10 µg/ml) and kanamycin (8x MBC) alone stained green suggesting their viability, while cells treated with same concentrations of kanamycin and protease in combination stained red depicting dead cells (Figure 6B).

Cytotoxicity Evaluation

Cytotoxicity of the protease was investigated on human epidermoid carcinoma A431 cells at neutral pH (pH 7.4) by phase contrast microscopy, MTT assay and confocal microscopy. It was observed that there was no change in morphological characteristics (Figure 7A) of A431 cells upon treatment with protease (10 µg/ml). Also, there was no significant reduction

in dehydrogenase activity of cells treated with protease (92.76% retained) at a concentration of 10 $\mu\text{g/ml}$ for 24 h as seen by MTT assay (Figure 7B). However, higher concentrations ($>10 \mu\text{g/ml}$) were found to be toxic to human epidermoid cells (Figure 7B).

The human epidermoid carcinoma cells were live/ dead stained and analyzed by confocal microscopy after protease treatment for 48 h (Figure 7C). There was no significant increase in necrotic cells in either control or protease containing wells at 10 $\mu\text{g/ml}$ concentrations suggesting it to be safe for application on human cells at this concentration.

CONCLUSIONS

This study extrapolates the potential of an extracellular protease secreted by *Microbacterium* sp. SKS10. The protease was purified with ammonium sulfate precipitation followed by gel permeation chromatography. This protease (25 kDa) identified as Peptidase M16 using mass spectrometry showed its optimum activity at 60°C and pH 12, and retained activity in various chloride metal salts as well as organic solvents. The loss of protease activity was observed under reducing conditions and also in the presence of cobalt chloride. The protease has a potential for biofilm removal when used at 100 times lower concentration as compared with other common enzymes. As per our knowledge, this is the first report of the use of Peptidase M16 as an anti-biofilm agent which increased the penetration of antibiotics by

degrading the bacterial extracellular matrix. The enzyme was non-cytotoxic to human epidermoid cells suggesting its use in biofilm removal and in therapeutic and industrial applications in the future.

AUTHOR CONTRIBUTIONS

SS and PM were involved in the study design and wrote the manuscript. SS carried out the experiments. GJ was involved in mass spectrometry studies. All authors have read and approved the final manuscript.

ACKNOWLEDGMENTS

SS is a UGC-MANF-SRF (University Grants Commission-Maulana Azad National Fellowship- Senior Research Fellow). We would like to thank Dr. Rachna Hora, Assistant Professor, Department of Molecular Biology and Biochemistry, Guru Nanak Dev University, Amritsar, Punjab, India for reading the manuscript.

SUPPLEMENTARY MATERIAL

The Supplementary Material for this article can be found online at: <https://www.frontiersin.org/articles/10.3389/fbioe.2019.00192/full#supplementary-material>

REFERENCES

- Algburi, A., Comito, N., Kashtanov, D., Dicks, L. M., and Chikindas, M. L. (2017). Control of biofilm formation: antibiotics and beyond. *Appl. Environ. Microbiol.* 83, e02508–e02516. doi: 10.1128/AEM.02508-16
- Araujo, P., Lemos, M., Mergulhao, F., Melo, L., and Simoes, M. (2011). “Antimicrobial resistance to disinfectants in biofilms,” in *Science Against Microbial Pathogens: Communicating Current Research and Technological Advances*, ed A. Méndez-Vilas (Badajoz: Formatex Research Center) 3, 826–834.
- Baidamshina, D. R., Trizna, E. Y., Holyavka, M. G., Bogachev, M. I., Artyukhov, V. G., Akhatova, F. S., et al. (2017). Targeting microbial biofilms using Ficin, a nonspecific plant protease. *Sci. Rep.* 7:46068. doi: 10.1038/srep46068
- Bateman, A., Coin, L., Durbin, R., Finn, R. D., Hollich, V., Griffiths-Jones, S., et al. (2004). The Pfam protein families database. *Nucleic acids Res.* 32, D138–D141. doi: 10.1093/nar/gkh121
- Bester, D. J., Kupai, K., Csont, T., Szucs, G., Csonka, C., Esterhuysen, A. J., et al. (2010). Dietary red palm oil supplementation reduces myocardial infarct size in an isolated perfused rat heart model. *Lipids Health Dis.* 9:64. doi: 10.1186/1476-511X-9-64
- Boominadhan, U., Rajakumar, R., Sivakumar, P. K. V., and Joe, M. M. (2009). Optimization of protease enzyme production using *Bacillus* sp. isolated from different wastes. *Bot. Res. Int.* 2, 83–87.
- Bradford, M. M. (1976). A rapid and sensitive method for the quantitation of microgram quantities of protein utilizing the principle of protein-dye binding. *Anal. Biochem.* 72, 248–254. doi: 10.1016/0003-2697(76)90527-3
- Chun, J., Lee, J. H., Jung, Y., Kim, M., Kim, S., Kim, B. K., et al. (2007). EzTaxon: a web-based tool for the identification of prokaryotes based on 16S ribosomal RNA gene sequences. *Int. J. Syst. Evol. Microbiol.* 57, 2259–2261. doi: 10.1099/ijs.0.64915-0
- Craigen, B., Dashiff, A., and Kadouri, D. E. (2011). The use of commercially available alpha-amylase compounds to inhibit and remove *Staphylococcus aureus* biofilms. *Open Microbiol. J.* 5:21. doi: 10.2174/1874285801105010021
- Fleming, D., and Rumbaugh, K. P. (2017). Approaches to dispersing medical biofilms. *Microorganisms.* 5:15. doi: 10.3390/microorganisms5020015
- Gjermansen, M., Nilsson, M., Yang, L., and Tolker-Nielsen, T. (2010). Characterization of starvation-induced dispersion in *Pseudomonas putida* biofilms: genetic elements and molecular mechanisms. *Mol. Microbiol.* 75, 815–826. doi: 10.1111/j.1365-2958.2009.06793.x
- Guan, Y., Zhu, Q., Huang, D., Zhao, S., Lo, L. J., and Peng, J. (2015). An equation to estimate the difference between theoretically predicted and SDS PAGE-displayed molecular weights for an acidic peptide. *Sci. Rep.* 5:13370. doi: 10.1038/srep13370
- Hansen, M. B., Nielsen, S. E., and Berg, K. (1989). Re-examination and further development of a precise and rapid dye method for measuring cell growth/cell kill. *J. Immunol. Methods.* 119, 203–210. doi: 10.1016/0022-1759(89)90397-9
- Harris, L. G., Nigam, Y., Sawyer, J., Mack, D., and Pritchard, D.I. (2013). *Lucilia sericata* chymotrypsin disrupts protein adhesion-mediated staphylococcal biofilm formation. *Appl. Environ. Microbiol.* 79, 1393–1395. doi: 10.1128/AEM.03689-12
- Herigstad, B., Hamilton, M., and Heersink, J. (2001). How to optimize the drop plate method for enumerating bacteria. *J. Microbiol. Methods.* 44, 121–129. doi: 10.1016/S0167-7012(00)00241-4
- Hunter, S., Apweiler, R., Attwood, T. K., Bairoch, A., Bateman, A., Binns, D., et al. (2008). InterPro: the integrative protein signature database. *Nucleic acids Res.* 37, D211–D215. doi: 10.1093/nar/gkn785
- Jain, D., Pancha, I., Mishra, S. K., Shrivastav, A., and Mishra, S. (2012). Purification and characterization of haloalkaline thermoactive, solvent stable and SDS-induced protease from *Bacillus* sp.: a potential additive for laundry detergents. *Bioresour. Technol.* 115, 228–236. doi: 10.1016/j.biortech.2011.10.081
- Jamal, M., Tasneem, U., Hussain, T., and Andleeb, S. (2015). Bacterial biofilm: its composition, formation and role in human infections. *RRJMB.* 4, 1–15.
- Jaouadi, B., Abdelmalek, B., Fodil, D., Ferradji, F. Z., Rekik, H., Zarai, N., et al. (2010). Purification and characterization of a thermostable

- keratinolytic serine alkaline proteinase from *Streptomyces* sp. strain AB1 with high stability in organic solvents. *Bioresource Technol.* 101, 8361–8369. doi: 10.1016/j.biortech.2010.05.066
- Johnson, M., Zaretskaya, I., Raytselis, Y., Merezhuk, Y., McGinnis, S., and Madden, T. L. (2008). NCBI BLAST: a better web interface. *Nucleic Acids Res.* 36, W5–W9. doi: 10.1093/nar/gkn201
- Kim, L. H., Kim, S. J., Kim, C. M., Shin, M. S., Kook, S., and Kim, I. S. (2013). Effects of enzymatic treatment on the reduction of extracellular polymeric substances (EPS) from biofouled membranes. *Desalin. Water Treat.* 51, 6355–6361. doi: 10.1080/19443994.2013.780996
- Kumar, S., Stecher, G., and Tamura, K. (2016). MEGA7: molecular evolutionary genetics analysis version 7.0 for bigger datasets. *Mol. Biol. Evol.* 33, 1870–1874. doi: 10.1093/molbev/msw054
- Laffineur, K., Avesani, V., Cornu, G., Charlier, J., Janssens, M., Wauters, G., et al. (2003). Bacteremia due to a novel *Microbacterium* species in a patient with Leukemia and description of *Microbacterium paraoxydans* sp. nov. *J. Clin. Microbiol.* 41, 2242–2246. doi: 10.1128/JCM.41.5.2242–2246.2003
- Lane, D. P., and Crawford, L. V. (1979). T antigen is bound to a host protein in SV40-transformed cells. *Nature.* 278, 261. doi: 10.1038/278261a0
- Linzer, D. I., and Levine, A. J. (1979). Characterization of a 54K dalton cellular SV40 tumor antigen present in SV40-transformed cells and uninfected embryonal carcinoma cells. *Cell.* 17, 43–52. doi: 10.1016/0092-8674(79)90293-9
- Lister, J. L., and Horswill, A. R. (2014). *Staphylococcus aureus* biofilms: recent developments in biofilm dispersal. *Front Cell Infect Microbiol.* 4:178. doi: 10.3389/fcimb.2014.00178
- Lopez, D., Vlamakis, H., and Kolter, R. (2010). Biofilms. *Cold Spring Harb. Perspect Biol.* 2:a000398. doi: 10.1101/cshperspect.a000398
- Lowry, O. H., Rosebrough, N. J., Farr, A. L., and Randall, R. J. (1951). Protein measurement with the folin phenol reagent. *J. Biol. Chem.* 193, 265–275.
- Maidak, B. L., Cole, J. R., Lilburn, T. G., Parker C. T. Jr., Saxman, P. R., Stradwick, J. M., et al. (2000). The RDP (ribosomal database project) continues. *Nucleic acids Res.* 28, 173–174.
- Marchler-Bauer, A., Derbyshire, M. K., Gonzales, N. R., Lu, S., Chitsaz, F., Geer, L. Y., et al. (2014). CDD: NCBI's conserved domain database. *Nucleic acids Res.* 42, D222–D226. doi: 10.1093/nar/gku1221
- Mushtaq, Z., Irfan, M., Nadeem, M., Naz, M., and Syed, Q. (2015). Kinetics study of extracellular detergent stable alkaline protease from *Rhizopus oryzae*. *Braz. Arch. Biol. Technol.* 58, 175–184. doi: 10.1590/S1516-8913201400071
- Pammi, N., Chaitanya, K., and Mahmood, S. K. (2015). *Serratia marcescens* OU50T sp. nov., a cellulose and pha producing bacterium isolated from polluted water. *Int. J. Environ. Biol.* 5, 32–36.
- Peak, E., Chalmers, I. W., and Hoffmann, K. F. (2010). Development and validation of a quantitative, high-throughput, fluorescent-based bioassay to detect schistosoma viability. *PLoS Negl. Trop. Dis.* 4:e759. doi: 10.1371/journal.pntd.0000759
- Pengov, A., and Ceru, S. (2003). Antimicrobial drug susceptibility of *Staphylococcus aureus* strains isolated from bovine and ovine mammary glands. *J. Dairy Sci.* 86, 3157–3163. doi: 10.3168/jds.S0022-0302(03)73917-4
- Sambrook, J., Russell, D. W., and Russell, D.W. (2001). *Molecular Cloning: A Laboratory Manual (3-volume set)*. Vol. 999. New York, NY: Cold spring harbor laboratory press.
- Schwede, T., Kopp, J., Guex, N., and Peitsch, M. C. (2003). SWISS-MODEL: an automated protein homology-modeling server. *Nucleic acids Res.* 31, 3381–3385. doi: 10.1093/nar/gkg520
- Sharma, D., Saharan, B. S., Chauhan, N., Procha, S., and Lal, S. (2015). Isolation and functional characterization of novel biosurfactant produced by *Enterococcus faecium*. *SpringerPlus.* 4:4. doi: 10.1186/2193-1801-4-4
- Singh, S., Singh, S. K., Chowdhury, I., and Singh, R. (2017). Understanding the mechanism of bacterial biofilms resistance to antimicrobial agents. *Open Microbiol. J.* 11:53. doi: 10.2174/1874285801711010053
- Sivanandhini, T., Subbaiya, R., Gopinath, M., Angrasan, J. K.V., Kabilan, T., and Selvam, M. M. (2015). An investigation on morphological characterization of Actinomycetes isolated from marine sediments. *RJPBCS.* 6, 1234–1243.
- Teitzel, G. M., and Parsek, and, M. R. (2003). Heavy metal resistance of biofilm and planktonic *Pseudomonas aeruginosa*. *Appl. Environ. Microbiol.* 69, 2313–2320. doi: 10.1128/AEM.69.4.2313–2320.2003
- Tetz, G. V., Artemenko, N. K., and Tetz, V.V. (2009). Effect of DNase and antibiotics on biofilm characteristics. *Antimicrob. Agents Chemother.* 53, 1204–1209. doi: 10.1128/AAC.00471-08
- Trizna, E., Diana, B., Kholyavka, M., Sharafutdinov, I., Hairutdinova, A., Khafizova, F., et al. (2016). Soluble and immobilized papain and trypsin as destroyers of bacterial biofilms. *Genes Cells.* 10, 106–112.
- UniProt Consortium (2014). UniProt: a hub for protein information. *Nucleic acids Res.* 42, D204–D212. doi: 10.1093/nar/gku989
- Wang, S. L., Hsu, W. T., Liang, T. W., Yen, Y. H., and Wang, C. L. (2008). Purification and characterization of three novel keratinolytic metalloproteases produced by *Chryseobacterium indologenes* TKU014 in a shrimp shell powder medium. *Bioresource Technol.* 99, 5679–5686. doi: 10.1016/j.biortech.2007.10.024
- Watnick, P., and Kolter, R. (2000). Biofilm, city of microbes. *J. Bacteriol.* 182, 2675–2679. doi: 10.1128/jb.182.10.2675-2679.2000
- Weatherly, L. M., and Gosse, J.A. (2017). Triclosan exposure, transformation, and human health effects. *J. Toxicol. Environ. Health. Part B.* 20, 447–469. doi: 10.1080/10937404.2017.1399306

Conflict of Interest Statement: The authors declare that the research was conducted in the absence of any commercial or financial relationships that could be construed as a potential conflict of interest.

Copyright © 2019 Saggu, Jha and Mishra. This is an open-access article distributed under the terms of the Creative Commons Attribution License (CC BY). The use, distribution or reproduction in other forums is permitted, provided the original author(s) and the copyright owner(s) are credited and that the original publication in this journal is cited, in accordance with accepted academic practice. No use, distribution or reproduction is permitted which does not comply with these terms.