



OPEN ACCESS

EDITED BY

Kristian Karlo Saguin,
University of the Philippines Diliman,
Philippines

REVIEWED BY

Solomon Dan,
Beibu Gulf University, China
M. Belal Hossain,
Noakhali Science and Technology University,
Bangladesh

*CORRESPONDENCE

Yueyin Cai
✉ 22384975@qq.com
Shengkang Liang
✉ liangsk@ouc.edu.cn

RECEIVED 14 December 2023

ACCEPTED 04 March 2024

PUBLISHED 19 March 2024

CITATION

Hao Y, Tan Z, Cai Y, Liang S, Zhang G,
Wang Q and Li Q (2024) Assessment of
carbon sink capacity and its value accounting
for a farmed shellfish in the coastal wetland
of the Yalu River Estuary.
Front. Aquac. 3:1355741.
doi: 10.3389/faquc.2024.1355741

COPYRIGHT

© 2024 Hao, Tan, Cai, Liang, Zhang, Wang and
Li. This is an open-access article distributed
under the terms of the [Creative Commons
Attribution License \(CC BY\)](https://creativecommons.org/licenses/by/4.0/). The use,
distribution or reproduction in other forums
is permitted, provided the original author(s)
and the copyright owner(s) are credited and
that the original publication in this journal is
cited, in accordance with accepted academic
practice. No use, distribution or reproduction
is permitted which does not comply with
these terms.

Assessment of carbon sink capacity and its value accounting for a farmed shellfish in the coastal wetland of the Yalu River Estuary

Yanju Hao¹, Zhenjiang Tan², Yueyin Cai^{3,4*}, Shengkang Liang^{2,5*},
Guangshuai Zhang^{3,4}, Quangming Wang^{3,4} and Qing Li³

¹Yantai Research Institute, China Agricultural University, Yantai, China, ²College of Chemistry and Chemical Engineering, Ocean University of China, Qingdao, China, ³National Marine Environmental Monitoring Center, Ministry of Ecology and Environment of the People's Republic of China, Dalian, China, ⁴State Environmental Protection Key Laboratory of Marine Ecosystem Restoration, Ministry of Ecology and Environment of the People's Republic of China, Dalian, China, ⁵Frontiers Science Center for Deep Ocean Multispheres and Earth System, and Key Laboratory of Marine Chemistry Theory and Technology, Ministry of Education, Ocean University of China, Qingdao, China

The carbon sink of cultivation shellfish in coastal wetlands is characterized as both highly ecological and economic value, thus making great contributions to achieving carbon neutrality. In this study, the main species of cultured shellfish (*Ruditapes philippinarum*, *Meretrix meretrix*, *Sinonovacula constricta*, *Scapharca suberenata*, and *Grassostrea gigas*) were selected as the research objects in the coastal wetland of the Yalu River Estuary to measure shellfish yields and carbon contents. Combined with the data from the cultured shellfish of fishery statistics of Donggang city, Dandong, Liaoning Province, China, the carbon sequestration capacity was calculated, and the carbon sink values of cultured shellfish also evaluated on the base of the diverse shellfish carbon sequestration ratios. The carbon sink conversion ratio of cultivation shellfish decreased in the following order: *S. suberenata*, *R. philippinarum*, *G. gigas*, *S. constricta*, and *M. meretrix*. The total carbon sequestration of cultured shellfish in the Yalu River Estuary Coastal Wetland from 2015 to 2019 was approximately 110,500 tC. The yield and the carbon sequestration quantity of *R. philippinarum* accounted for 76.60~83.30% of the total yield and 79.07~85.41% of the total carbon sequestration quantity. The value of the carbon sink was approximately 63,710,600 yuan. Among the species of cultured shellfish, *R. philippinarum* was the largest contributor to the carbon sink value. Based on Tapio's decoupling model, *R. philippinarum* has the most ideal state of decoupling between carbon sink and economic growth of cultured shellfish, followed by *M. meretrix* and *S. suberenata*. Our results illustrate that the development of coastal wetland shellfish aquaculture has a positive contribution to reducing carbon emissions and increasing carbon sinks.

KEYWORDS

coastal wetlands, the carbon sink of farmed shellfish, carbon sink conversion ratio, carbon sink value, coastal wetland of Yalu River Estuary

1 Introduction

Global climate change is regarded as one of the most serious challenges facing the sustainable development of mankind (Yu et al., 2021). Since the beginning of the industrial era, long-lived greenhouse gases, such as carbon dioxide (CO₂), methane, nitrous oxide, etc, have caused an obvious increase in global warming (Wang et al., 2017). Atmospheric CO₂ concentrations have risen by around 40% during the last 150 years. The massive emission of CO₂ from human activities is the most significant driver of observed climate change since the mid-20th century (IPCC et al., 2013). Reducing and controlling carbon dioxide emissions has become one of the biggest issues for countries to curb the growth of carbon emissions.

The mariculture industry has a large carbon sink potential, and thus it is considered as a green and low-carbon production mode to support the goal of carbon neutrality (Liu and Tang, 2011; Li et al., 2023). Shellfish is a key component in marine ranching, which represents an important marine biological C sink due to high biodeposition and calcification rates (Feng et al., 2022; Wang et al., 2022). Shellfish mainly react with HCO₃⁻ in seawater to form CaCO₃, thus forming carbon sinks. The soft tissue, however, filters and lives on microalgae and organic particles in seawater to promote growth. Ultimately, harvesting shellfish enables carbon sequestration by directly removing large amounts of carbon from seawater (Zhang et al., 2005). The amount of CO₂ released by shellfish through respiration and calcification during their growth is far less than the amount of CO₂ stored in seawater as metabolites and is removed from seawater as ecological products (Fodrie et al., 2017; Feng et al., 2022; Jiang et al., 2022). Although CO₂ release is a by-product of carbonate shell production, shellfish is overwhelmingly regarded to have a carbon sink function in the ecosystem that can remove carbon from seawater and store it for a long time (Qi et al., 2012; Yue and Wang, 2012; Li, 2014; Yu et al., 2020). Culturing shellfish in the tidal flat wetland is one of the most efficient methods of biological carbon sequestration (Tang et al., 2011, Tang et al., 2022). Several studies have been conducted to estimate the growth and carbon content of shellfish cultivation (Quan et al., 2014; Fodrie et al., 2017). The previous research had demonstrated that moderately increasing shellfish can improve the carbon sequestration capacity as well as carbon sink service functions (Li et al., 2023). Carbon sequestration in shellfish cultivation depends on site characteristics and plantation management, especially in intertidal wetland and estuarine wetland ecosystems. It is still difficult to accurately quantify the amount of shellfish cultivation carbon sequestration, due to the lack of site-specific data and specie-specific data (Feng et al., 2022).

The ecological and economic values of shellfish include product value, carbon storage value, oxygen release value and purification value (Fodrie et al., 2017; Liu et al., 2019; Hao et al., 2020). Among them, carbon sink provides material products and environmental conditioning services, and provides the provision service value and regulating service value (Tang et al., 2018). The calculation of economic values of shellfish carbon sinks can provide a data reference for shellfish cultivation industry subsidies and improve the production enthusiasm of the carbon sink culture industry

(Jiang et al., 2022; Wen et al., 2022). Recently, the ecological values of blue carbon have been evaluated by the market valuation method, alternative cost method, and contingent value method (Qin et al., 2015; Zheng et al., 2019; Trégarot et al., 2020; Hu et al., 2024). Despite vast literature on shellfish product value and related functions (Kirwan and Mudd, 2012; Duarte et al., 2016; Kara et al., 2018), few studies have examined the values of cultured shellfish carbon sink.

Carbon emissions is closely related to economic growth and structural adjustment in a region or country. How to achieve dynamic and coordinated development of regional economic growth and CO₂ emissions, which is vital for China to achieve green and sustainable development. It is necessary to clarify the relation of the carbon emission with the economic growth. Decoupling theory was first used to analyze the dynamic process between the two closely related variables from the beginning to the end of decoupling (Tapio, 2005). Recently, decoupling theory has been applied to analyze the idealized relationship between CO₂ and economic growth during decoupling (Zhong et al., 2012; Cao et al., 2015; Shao et al., 2019a). Shellfish farming in coastal waters is a very important industry in China. If the rate of the aquaculture's carbon sink is negative or lower than the rate of economic growth, this process should be regarded as a form of decoupling (Shao et al., 2019a; Cao and Wang, 2020; Zhao et al., 2022). Previous research has proved that culture efficiency effect has a strong driving effect on the total economic value of carbon sinks in cultivated seaweeds and the total economic value of cultivated seaweeds can be improved by adjusting the cultivation species (Yu et al., 2023). However, the decoupling model to evaluate the relationship of CO₂ emission with economic growth is relatively simple, especially for the selection of indicators and determination of native parameters. Efforts should be made to enhance the function and value of cultivated shellfish carbon sink, thus it is necessary to promote the high-quality development of the fishery industry.

In this study, five species of cultured shellfish (*Ruditapes philippinarum*, *Meretrix meretrix*, *Sinonovacula constricta*, *Scapharca suberenata*, and *Grassostrea gigas*) were selected to measure carbon sequestration parameters and the Yalu River Estuary was chosen as a representative of coastal wetland of China. The fishery statistics data was collected in the last five years and a decoupling elasticity theory (Tang et al., 2011; Qi et al., 2012; Li, 2014; Shao et al., 2018) was applied. The objectives of this study are: (1) to calculate the carbon sink capacity of cultured shellfish; (2) to study the relationship between the change rates of aquaculture carbon sink value and the value of the economic increase.

2 Research methods

2.1 Research region

The Yalu River Estuary Coastal Wetland National Nature Reserve (Figure 1) is in Donggang city (E123°34'20"~E124°07'28", N39°40'06"~N39°58'24"), Liaoning Province, covering an area of 10,100 hectares. It contains land, beach and ocean

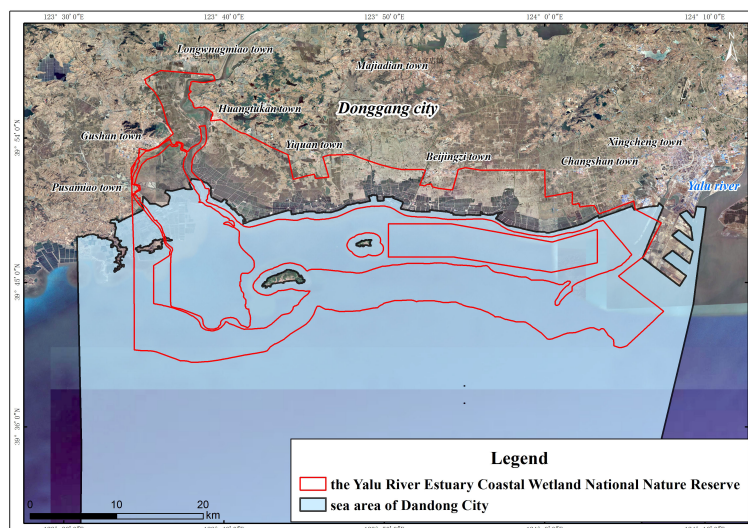


FIGURE 1

The map shows the location of the Yalu River Estuary Coastal Wetland National Nature Reserve. The red line draws a range of the reserve, and the blue area shows the sea area of Donggang city, Dandong, a county-level city in Liaoning Province, located in southeastern Liaoning Province and southwestern Dandong city.

ecosystems and forms complex and multiple ecosystem types, including reed wetlands, marshes, lake basin bogs, tidal marshes, and estuaries. There are 7 large rivers in the reserve. Among them, the substrates of the Yalu River and the Dayang River in the intertidal zone are suitable for annelid and mollusk growth. The quantity of nutrients and organic matter carried by these two rivers offers sufficient food to benthic organisms. The reserve is one of the significant shellfish production areas in Liaoning Province (Li et al., 2014). The main shellfish culture method used in this area is beach cultivation, and there is a small amount of mixed aquaculture of shellfish, shrimp, and jellyfish above the coastline.

2.2 Data sources and processing

The Yalu River Estuary Coastal Wetland National Nature Reserve has the characteristics of zonal distribution along the coastline in Donggang city, Liaoning Province, from east to west. This wetland intertidal zone is a breeding base of the harbor and serves as a beach in Donggang city. As a result, we obtained data from Donggang city's shellfish culture statistics to represent the breeding conditions of the Yalu River Estuary Coastal Wetland.

The data on the varieties, culture area and yield of cultured shellfish from 2015 to 2019 were from the Liaoning Province Fishery Statistics Annual Report (Liaoning Ocean and Fisheries Bureau, 2015-2019). The Rst (dry weight ratio of soft tissue) and Rs (dry weight ratio of shell) of *Grassostrea gigas*, *Scapharca suberenata*, *Sinonovacula constricta* and *Ruditapes philippinarum* were measured in the coastal wetland of the Yalu River Estuary in 2018. The sample collection method was based on national guidelines (Standardization Administration of the People's Republic of China, 2007). Shellfish were collected from 4-8 plots (25×25×20 cm) at each station, and the shellfish were screened by using a sieve with a pore size of 0.37 mm

and a diameter of approximately 40 cm. The selected shellfish were put into sealed bags and placed in cold storage. The relevant parameters were determined according to the Chinese industrial standard (Ministry of Natural Resources, People's Republic of China, 2021). Thirty samples were randomly selected, and the shell length, shell height and shell width of each species were measured by a Vernier caliper. The shellfish samples were weighed by an electronic balance (wet weight). Furthermore, the wet weight of the shell and soft tissue was weighed. Shell and soft tissue were washed with distilled water. Then, their surfaces were dried, and their wet weights were determined. The dry weight, dry-wet ratio and mass ratio were recorded after drying at 60°C for 48 h. The dried samples were then ground into powder and sieved to 80 mesh (178 μm), and the rate of carbon content was determined by an elemental analyzer. Additionally, the instrument parameters were set according to the manufacturer's instructions, and the samples were embedded based on the sample requirements. Moreover, three parallel samples were fixed for each sample, and average values were calculated. Note that the parameters for *Meretrix meretrix* were taken from the references (Tang et al., 2011; Ge et al., 2022). A flow chart of the method in this paper is presented in Figure 2.

2.2.1 Calculation of cultured shellfish carbon sequestration

The carbon sequestration amount of cultured shellfish is calculated by their yield and carbon content (Tang et al., 2011; Qi et al., 2012; Li, 2014; Shao et al., 2018). The formula is as follows:

$$S_a = \sum_{i=1}^n P_i \times (R_{st} \times WC_{st} + R_s \times WC_s)$$

where S_a is the shellfish carbon sequestration, P_i is the i th kind of shellfish yield, R_{st} is the dry weight of soft tissue, WC_{st} is the percentage of carbon content of soft tissue, R_s is the dry weight of

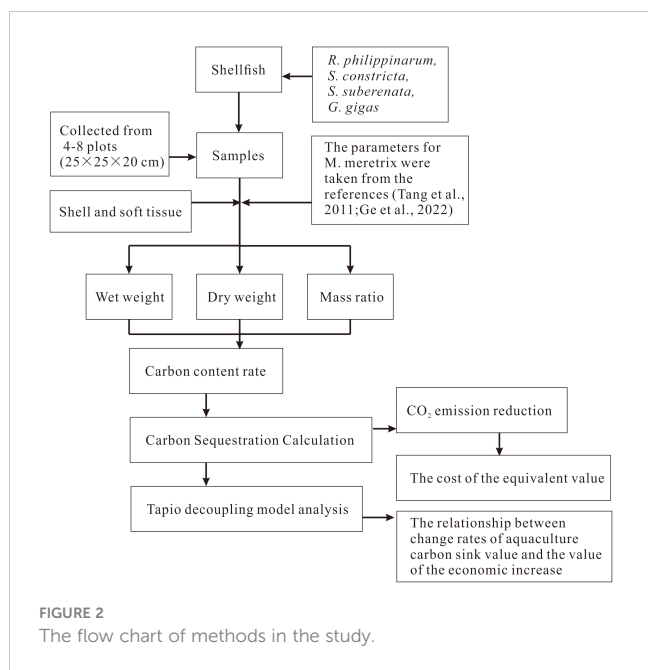


FIGURE 2 The flow chart of methods in the study.

the shell, and WCs is the percentage of carbon content of the shell. The different cultured shellfish parameters are shown in Table 1.

2.2.2 Calculation of cultured shellfish carbon sink value

The formula for the carbon sink value of cultured shellfish (Tang et al., 2011; Qi et al., 2012; Li, 2014; Shao et al., 2018) is as follows:

$$V = V_a \times S_a \times K$$

where V is the cultured shellfish carbon sink value, V_a is the cost of the equivalent value of CO₂ emission reduction, S_a is the carbon sequestration of shellfish, and K is the conversion coefficient.

Research has shown that a CO₂ emission reduction is equivalent to the cost of the equivalent value of 157 yuan per ton in Liaoning Province (Cao et al., 2019; Yu et al., 2020). Therefore, in this study, we selected 157 yuan/t as the equivalent value cost of cultured shellfish CO₂ emission reduction in the Yalu River Estuary Coastal Wetland.

The carbon sequestration value of different types of shellfish was calculated based on the diverse shellfish carbon sequestration ratios in Table 1. The conversion coefficient is the ratio of the CO₂ and C molecular weight, and the ratio is 3.67(44/12) (Ge et al., 2022).

TABLE 1 Parameters of cultured shellfish carbon sequestration.

Type	Rst	Rs	WC _{ST} (%)	WC _S (%)
Grassostrea gigas	0.058	0.822	44.9	11.52
Scapharca suberenata	0.081	0.764	45.86	11.29
Sinonovacula constricta	0.023	0.648	44.99	13.24
Ruditapes philippinarum	0.070	0.769	42.84	11.40
Meretrix meretrix	0.077	0.447	42.80	11.40

2.2.3 Tapio decoupling model

A decoupling elasticity theory (Tang et al., 2011; Qi et al., 2012; Li, 2014; Shao et al., 2018) was selected to study the relationship between the change rates of aquaculture carbon sink value and the value of the economic increase. The following formula was used:

$$\epsilon = \frac{(S_{t+1} - S_t)/S_t}{(G_{t+1} - G_t)/G_t} = \frac{\Delta S/S}{\Delta G/G}$$

where ϵ is the decoupling elasticity. S_t and G_t are for the t th period of cultured shellfish carbon sink quantities and the economic output of aquaculture, respectively. $\Delta S/S$ is the annual growth rate of cultured shellfish carbon sink quantities. $\Delta G/G$ is the annual growth rate of the economic output of aquaculture.

The decoupling states should be divided into 3 parts (negative decoupling, decoupling, coupling) by the decoupling elastic values of 0.8 and 1.2. Then, these states can be subdivided into 8 specific states in light of the numerical value (Table 2) (Cao and Wang, 2020; Liu et al., 2022).

2.2.4 Model uncertainty analysis

The uncertainty should be noticed when using the Tapio decoupling model. For example, the diversity of data sources and statistics, the patio-temporal representation of sampled quadrats, and the accuracy of data measurement, these uncertainties could interfere with the decoupling model. If the uncertainties are used during the data analyses, the accuracy of the analyses will probably become better. However there are difficulties in analyzing the uncertainties in temporal trends. And there are no good estimates for temporal comparisons of every shellfish species. The results may be relatively high. Another pitfall emerges from the incomparable methods used in obtaining the data, which makes it difficult to compare the size of different shellfish. However, as long as the different methods do not affect a bias in the temporal growth rate, this problem is less severe in defining whether decoupling occurs or not.

3 Results and discussion

3.1 Carbon sequestration quantities of cultured shellfish

Research shows that from 1999 to 2008, through the harvest of farmed shellfish, the amount of carbon removed from China's offshore every year is 700,000 to 990,000 t (an average of 860,000 t), of which 670,000 t of carbon was removed from the

TABLE 2 The division of Tapio decoupling states.

The state of decoupling		$\Delta S/S$	$\Delta G/G$	Elastic value ϵ	Meaning
Decoupling	Weak decoupling	>0	>0	$0 \leq \epsilon < 0.8$	fairly ideal state
	Strong decoupling	<0	>0	$\epsilon < 0$	Ideal state
	Recessive decoupling	<0	<0	$\epsilon > 1.2$	Allowable state
Negative Decoupling	Expansive negative decoupling	>0	>0	$\epsilon > 1.2$	Undesirable state
	Strong negative decoupling	>0	<0	$\epsilon < 0$	The least ideal state
	Weak negative decoupling	<0	<0	$0 \leq \epsilon < 0.8$	Undesirable state
Coupling	Expansive coupling	>0	>0	$0.8 \leq \epsilon \leq 1.2$	Undesirable state
	Recessive coupling	<0	<0	$0.8 \leq \epsilon \leq 1.2$	Allowable state

The data on seawater economic output value from 2015 to 2019 were from the Liaoning Fishery Statistical Annual Report (Liaoning Ocean and Fisheries Bureau, 2015–2019).

ocean in the form of shells (Zhang et al., 2005; Tang, 2011). From 2015 to 2017, the average annual carbon removal of maricultured algae and shellfish in Liaoning Province was about 27,700 tons, equivalent to the reduction of 1108,200 million tons of CO₂ (Cao et al., 2019).

From 2015 to 2019, the total carbon sequestration quantity of cultured shellfish was approximately 110,500 tC along the coastal wetland of the Yalu River Estuary, and the annual average carbon removal was approximately 22,100 t. Based on the annual average carbon removal of maricultured shellfish of 166,800 t for Liaoning Province (Yin et al., 2022), the annual carbon sequestration of cultured shellfish in the coastal wetland of the Yalu River Estuary comprised 13.25% of the total provincial level. The higher the yield of cultured shellfish was, the greater the carbon sequestration (Yue and Wang, 2012; Zhang et al., 2013). From 2015 to 2019, the shellfish species cultured in the coastal wetland of the Yalu River Estuary were mainly *R. philippinarum*. Their culture area accounted for 66.67–81.87% of the total area, their yield accounted for 76.60–83.30% of the total yield, and the carbon sequestration accounted for 79.07–85.41% of the total. The second main species of cultured shellfish were *S. constricta* and *S. suberenata*. The culture area of *S. constricta* accounted for 1.53–2.72%, the yield accounted for 10.74–12.39%, and the carbon sequestration accounted for 8.91–10.08%. In addition, the culture area of *S. suberenata* accounted for 12.6–23.81%, the yield accounted for 1.67–7.77%, and the carbon sequestration accounted for 1.68–8.53% (Figure 3). To the extent of the yield of the unit culture area and quantity of carbon sequestration, in the past few years, the unit area yield of *S. constricta* was the highest and increased continuously each year, except for *G. gigas* in 2019, which reached a quantity of 39.63 t/hm² in 2019 (Figure 3). Nevertheless, the unit area yield and the amount of carbon sequestration of *R. philippinarum* were lower than those of *S. constricta*, although its culture area and yield were the highest (Figures 3, 4). This result is consistent with the results of previous studies showing a linear relationship between the production of marine shellfish aquaculture and the carbon sequestration (Yue and Wang, 2012).

In conclusion, among the cultured shellfish of the Yalu River Estuary Coastal Wetland, *R. philippinarum* had the highest proportion of yield and carbon sequestration of the total amounts, and *S. constricta* had the second highest proportions (Figure 3).

Due to the lack of samples of externally attached organisms and sediments during sampling, the carbon sequestration calculations for these two types of samples were not included in this study. Although this result does not fully reflect the entire process of carbon sequestration of cultured shellfish (Wen et al., 2022), as the most important ecologically relevant product of coastal wetland culture in the Yalu River Estuary, the carbon sink capacity of cultured shellfish directly reflects the carbon sink importance of ecological products in the region.

The carbon sink conversion ratio of cultured shellfish is the ratio of carbon sequestration to yield and is one of the most important values for measuring the carbon sink capacity of aquaculture (Yue and Wang, 2012; Shao et al., 2018). From 2015 to 2019, the average carbon sink conversion ratio of different cultured shellfish in the coastal wetland of the Yalu River Estuary was, in descending order, *S. suberenata*, *R. philippinarum*, *G. gigas*, *S. constricta* and *M. meretrix* (Figure 5). The results showed that *S. suberenata* had the strongest carbon sequestration capacity. In contrast, the carbon sequestration capacity of shellfish in Liaoning Province was ranked in descending order as *S. constricta*, *R. philippinarum*, *M. meretrix*, *G. gigas* and *S. suberenata* (Yin et al., 2022), indicating that the same cultured species exhibited different carbon sequestration capacities in different breeding environments. However, the total carbon sequestration of *S. suberenata* in the Yalu River Estuary Coastal Wetlands is not incredibly high, mainly due to the limitation of a lack of yield per unit culture area. The average carbon sink conversion ratio of cultured shellfish farmed in coastal wetlands was 10.92 (Figure 5), which was not only higher than the average for Liaoning Province (Shao et al., 2019b) but also higher than the average for other marine areas (Shao et al., 2018; Hong et al., 2022), indicating that the Yalu River Estuary Coastal Wetlands have a locational advantage in deploying carbon sink fishery activities.

Therefore, we determined that improving the yield of cultured shellfish or increasing the variety of shellfish with high-level carbon

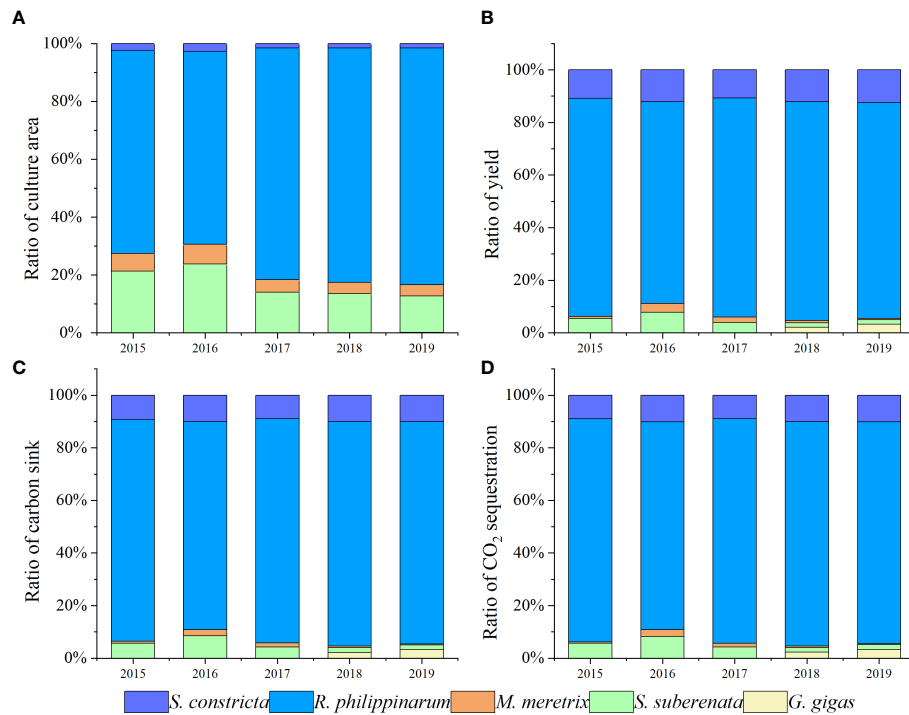


FIGURE 3 The proportion of each accounting value (A: the ratio of culture area; B: the ratio of yield; C: the ratio of carbon sink; D: the ratio of CO₂ sequestration) of different kinds of cultured shellfish from 2015 to 2019 in the coastal wetland of the Yalu River Estuary. The data on varieties, culture area and yield of cultured shellfish from 2015 to 2019 were from the Liaoning Province Fishery Statistics Annual Report (Liaoning Ocean and Fisheries Bureau, 2015–2019).

sequestration would be an important way to enhance the carbon sink capacity of cultured shellfish in coastal wetlands.

3.2 Carbon sink value of cultured shellfish

Between 2015 and 2019, the carbon sink value of cultured shellfish in the coastal wetlands of the Yalu River Estuary was

approximately 63.71 million yuan, with an annual average of 12.748 million yuan. The average annual carbon sink value of farmed shellfish in Liaoning Province calculated using the same parameters was 1600 million yuan (Yu et al., 2020). Comparatively, the carbon sink value of cultured shellfish in the Yalu River Estuary Coastal Wetlands was approximately 7.97% of the average level in the province. Moreover, shellfish aquaculture in the coastal wetlands of the Yalu River Estuary was mainly beach cultivation, which had

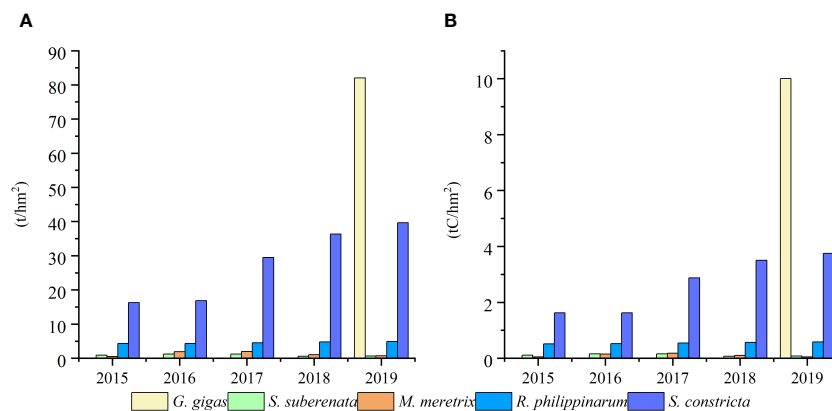
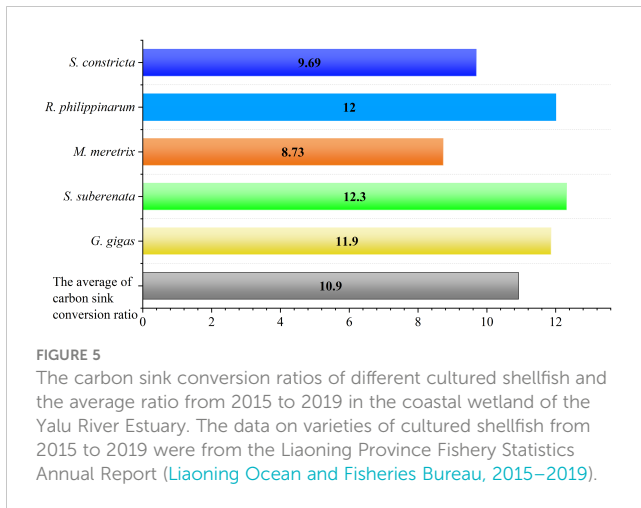


FIGURE 4 (A) The yield and (B) the quantity of carbon sinks of different shellfish per unit culture area (hectare) from 2015 to 2019 in the coastal wetland of the Yalu River Estuary. The data on varieties, culture area and yield of cultured shellfish from 2015 to 2019 were from the Liaoning Province Fishery Statistics Annual Report (Liaoning Ocean and Fisheries Bureau, 2015–2019).



little impact on the ecological landscape and caused little damage to the coastal wetland ecosystem.

Suppose fisheries carbon sink projects are included in the China Certified Emission Reduction (CCER) mechanism in the future. In that case, shellfish aquaculture in the Yalu River Estuary Coastal Wetlands can be an effective way to help achieve carbon peaking and carbon neutrality goals.

At the same time, The Yalu River Estuary Coastal Wetland National Nature Reserve, as a trading entity for carbon sink property rights in marine fisheries, can receive over 10 million yuan annually for wetland restoration and maintenance, ecological replenishment, wetland ecological monitoring, etc. in protected areas, which is basically equivalent to the central government wetland subsidy funds received by Dandong in 2021 (Liaoning Forestry and Grassland Bureau, 2022), providing strong financial support for achieving coordinated development of fishery economy and ecology.

In terms of aquaculture species, *R. philippinarum* was the largest contributor to the annual average carbon sink value, accounting for approximately 84.36%, followed by *S. constricta*, at 9.65%. On average, *S. constricta* had an annual carbon sink value per unit aquaculture area of 1,537 yuan/hm², which was second only to that of *G. gigas*. The culture of *M. meretrix* had the lowest

contribution to the average annual carbon sink value, at only 0.94%. *G. gigas* has been cultured since 2018, and the breeding scale is generally very small. Despite its high average annual carbon sink value per unit area, it has contributed little to the cultured shellfish's total carbon sink value (Figure 6). At present, the quantity of shellfish larvae from *R. philippinarum* in the coastal wetlands of the Yalu River Estuary accounts for more than 80% of the total amount of larvae (Yu, 2022), and there is still potential to adjust its culture structure from a carbon sink point of view. Consequently, an in-depth quantitative study of the carbon sequestration mechanism of cultured shellfish in coastal wetlands and a further accurate accounting of the carbon sink value of cultured shellfish may provide a foundation for enhancing the carbon sink value of fisheries, formulating a coastal wetland resource protection plan, and maximizing ecosystem service functions.

3.3 Relationship between carbon sinks of cultured shellfish and local seawater economy

Based on Tapio's decoupling model, the decoupling relationship between the carbon sink of cultured shellfish in the Yalu River Estuary Coastal Wetland and the seawater economy of the region is shown in Table 3, and there are six different types of elasticity characteristics that define the relationship: strong decoupling, weak decoupling, recessive decoupling, expansive negative decoupling, strong negative decoupling, and expansive coupling. Among them, *R. philippinarum* had the most ideal state of decoupling between the carbon sink and the economic growth of cultured shellfish. As the main aquaculture species in the coastal wetlands of the Yalu River Estuary, although *R. philippinarum* is not optimal in terms of yield per unit area and carbon sequestration, it is yet the optimal species for the coordinated development of carbon sink fisheries economy and ecology in response to the national blue carbon strategy.

The carbon sinks of *M. meretrix* and *S. suberenata* had a more ideal decoupling state except in 2016. In contrast, the carbon sink of *S. constricta* with the economic growth rate was in the least ideal state or undesirable state, except in 2016. The carbon sink of *G. gigas* also showed an undesirable state.

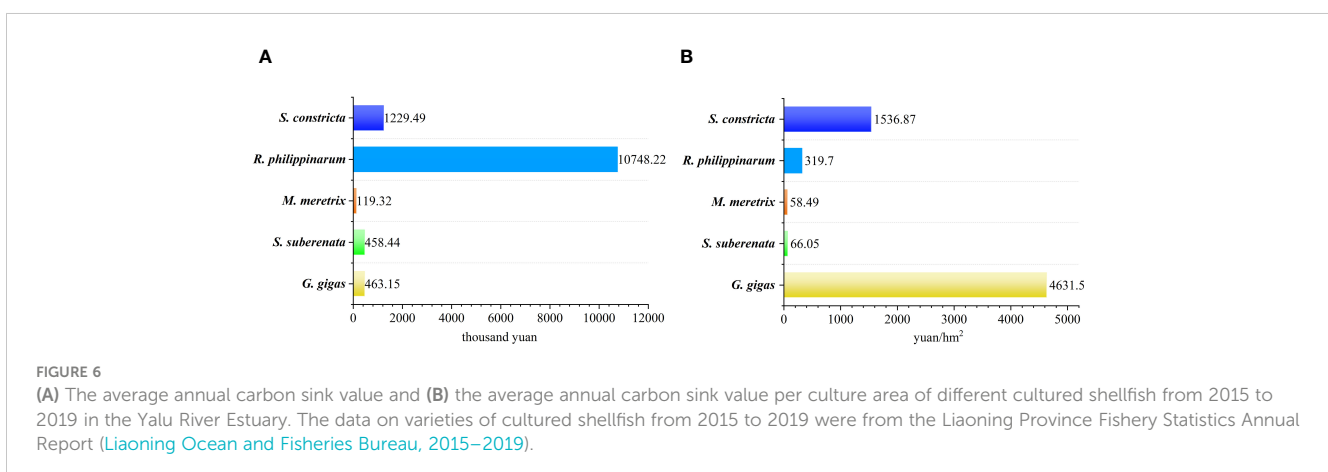


TABLE 3 The relationship of decoupling between cultured shellfish carbon sinks and the marine economy in the Yalu River Estuary Coastal Wetland from 2015 to 2019.

Year	Elastic value of cultured shellfish ϵ	Decoupling state	<i>G. gigas</i>	<i>S. suberenata</i>	<i>M. meretrix</i>	<i>R. philippinarum</i>	<i>S. constricta</i>
2015	—	—	—	—	—	—	—
2016	-1.51	Strong decoupling	—	Expansive negative decoupling	Expansive negative decoupling	Strong decoupling	Weak decoupling
2017	1.34	Expansive negative decoupling	—	Weak decoupling	Weak decoupling	Expansive negative decoupling	Expansive coupling
2018	-0.76	Strong negative decoupling	—	Recessive decoupling	Recessive decoupling	Strong negative decoupling	Strong negative decoupling
2019	0.94	Expansive coupling	Expansive negative decoupling	Weak decoupling	Strong decoupling	Weak decoupling	Expansive coupling

In general, the elastic characteristic frequency of different cultured shellfish was similar, although it may be caused by the accuracy of data measurement or diversity of data sources, that still indicating that the decoupling relationship between the cultured output value and the shellfish carbon sink was not close and that the overall decoupling state was relatively unstable. Especially with the increased cultivation area and yield of *S. constricta* and *G. gigas*, their decoupling elasticities represent expansive coupling and strong negative decoupling, respectively, indicating that although they have a strong carbon sink capacity, the environmental costs of culturing these species are higher than the economic benefits.

Therefore, for *S. constricta* and *G. gigas*, it is necessary to optimize the aquaculture production process, and reduce unnecessary energy consumption and carbon emissions for promoting the decoupling of these types of shellfish aquaculture from carbon emissions. It is necessary to take the advantages of high carbon sequestration capacity shellfish varieties to continuously improve carbon sink capacity for the farmed shellfish in the Coastal Land of the Yalu River Estuary.

4 Conclusion

In this study, we calculated the cultured shellfish carbon sink capacity and the value of these ecological products in the Yalu River Estuary Coastal Wetland. The carbon sink conversion ratio of shellfish cultured in the coastal wetlands of the Yalu River Estuary decreased in the following order: *S. suberenata*, *R. philippinarum*, *G. gigas*, *S. constricta*, and *M. meretrix*. From 2015 to 2019, the average annual carbon sequestration of cultured shellfish in the Yalu River Estuary Coastal Wetland was 22,100 tons, accounting for 13.25% of the average in the province.

The yield and the carbon sequestration quantity of *R. philippinarum* accounted for 76.60~83.30% of the total yield and 79.07~85.41% of the total carbon sequestration quantity but had less carbon sequestration per unit area than did *S. constricta*. The total production and carbon sequestration of *S. constricta* was

second only to that of *R. philippinarum*. Apart from *G. gigas*, *S. constricta* had the highest carbon sequestration quantity per unit area and showed a year-on-year upward trend, reaching 3.75 t C/hm² in 2019. The total 5-year carbon sink value was approximately 63.71 million yuan with an average of 12.74 million yuan per year. *R. philippinarum* was the largest contributor to the carbon sink value. Improving the production per unit farming area or increasing the proportion of farming of high carbon sink species can effectively improve the total carbon sink capacity of coastal wetlands. *R. philippinarum* had the most ideal decoupling state of carbon sink and economic growth of cultured shellfish, followed by *S. suberenata* and *M. meretrix*. Combined with the carbon sink capacity measurement results, the primary increase in the high carbon sink conversion ratio and high environmental benefits of farmed species are *R. philippinarum* and *S. suberenata*, followed by *M. meretrix*. The development of coastal wetland shellfish aquaculture has a positive contribution to reducing carbon emissions and increasing carbon sinks.

Data availability statement

The original contributions presented in the study are included in the article/supplementary material. Further inquiries can be directed to the corresponding authors.

Ethics statement

The manuscript presents research on animals that do not require ethical approval for their study.

Author contributions

YH: Conceptualization, Data curation, Formal analysis, Writing – original draft. ZT: Formal analysis, Software, Writing – review &

editing. YC: Data curation, Investigation, Project administration, Supervision, Writing – review & editing. SL: Funding acquisition, Methodology, Project administration, Resources, Supervision, Validation, Writing – review & editing. GZ: Data curation, Formal analysis, Investigation, Software, Visualization, Writing – review & editing. QW: Data curation, Investigation, Visualization, Writing – review & editing. QL: Data curation, Investigation, Software, Visualization, Writing – review & editing.

Funding

The author(s) declare financial support was received for the research, authorship, and/or publication of this article. This work was funded by the Pilot Study on Entrusted Agent Mechanism for Ownership of Nationally Owned Natural Resource Assets in Liaoning Province (Marine Resources) (2022-K-073), the Pilot Study on Entrusted Agent Mechanism for Ownership of Marine Resource Assets in Dandong Municipality (2022-K-129), Laoshan

References

- Cao, Q. R., Liu, S. L., and Zheng, W. (2019). The carbon dioxide emission reduction targets of provincial regions of China and their cost sharing. *J. Stat. Inf.* 34, 114–120. doi: 10.3969/j.issn.1007-3116.2019.04.015
- Cao, G. X., Liu, Y. Q., and Zhou, Y. (2015). Study on carbon emission decoupling of the manufacturing industry in Yangtze river delta area. *Yuejiang Acad. J.* 7, 37–44.
- Cao, L., and Wang, Y. (2020). Estimation of carbon sink potential of marine aquaculture and its decoupling from economic development: taking the three major coastal regions for example. *Mar. Econ.* 10, 48–56. doi: 10.3969/j.issn.2095-1647.2020.05.006
- Duarte, M. C., Losada, J. I., Hendriks, E. I., Mazarrasa, I., and Mazarrasa, M. N. (2016). Correction: Corrigendum: The role of coastal plant communities for climate change mitigation and adaptation. *Nat. Clim. Change* 6, 802.
- Feng, J., Zhang, T., Ma, P. Z., Bai, T., Xu, J. L., Wang, H. Y., et al. (2022). Research progress and the prospect of oyster reef carbon source and sink functions. *Prog. Fish. Sci.* 43, 1–10. doi: 10.19663/j.issn.2095-9869.20220222003
- Fodrie, F. J., Rodriguez, A. B., Gittman, R. K., Grabowski, J. H., Lindquist, N. L., Peterson, C. H., et al. (2017). Oyster reefs as carbon sources and sinks. *P. R. Soc. B-Biol. Sci.* 284, 20170891. doi: 10.1098/rspb.2017.0891
- Ge, H. X., Zhao, J., and Dong, Z. G. (2022). Production status and carbon sink assessment of marine shellfish in Jiangsu province from 2016 to 2020. *J. Jiangsu Ocean Univ. (Nat. Sci. Edit.)* 31, 1–6. doi: 10.3969/j.issn.2096-8248.2022.02.001
- Hao, L. H., He, S., Chen, S., Zhao, D. B., and Hu, D. J. (2020). Evaluation method and application on regulating service value in marine ecosystem: Wenzhou city's practice. *Acta Ecol. Sin.* 40, 4264–4278. doi: 10.5846/stxb201911012305
- Hong, X. G., Wang, K., Song, H. J., Chu, J. S., and Zhang, Z. H. (2022). Carbon sink accounting and capacity assessment of mariculture in Changdao, Shandong Province. *Ocean Dev. Manage.* 8, 12–16. doi: 10.3969/j.issn.1005-9857.2022.8.hykyfjgl202208002
- Hu, S. S., Zou, D. H., Zhou, K., and Wang, Z. Y. (2024). Evaluation for ecological services of macroalgae in the seaweed beds of the eastern coastal waters of Shenzhen, China. *Chin. J. Ecol.* 43, 224–233. doi: 10.13292/j.1000-4890.202401.005
- IPCC, Stocker, T. F., Qin, D., Plattner, G. K., Midgley, P. M. (2013). The physical science basis. contribution of working group I to the IPCC fifth assessment report of the intergovernmental panel on climate change. *Clim. Change* 2013.
- Jiang, Z. J., Fang, J. G., Mao, Y. Z., Jiang, W. W., Fang, J. H., Lin, F., et al. (2022). Research progress on the carbon sink function of filter-feeding shellfish mariculture and future scientific issues. *Prog. Fish. Sci.* 43, 106–114. doi: 10.19663/j.issn.2095-9869.202202225002
- Kara, R. R., Ryan, P. M., Amanda, R. C., Christina, E. P., Ioana, B., Barbara, C. C., et al. (2018). Coastal blue carbon assessment of mangroves, salt marshes, and salt barrens in Tampa Bay, Florida, USA. *Estuar. Coast.* 41, 1496–1510. doi: 10.1007/s12237-017-0362-7
- Kirwan, M. L., and Mudd, S. M. (2012). Response of salt-marsh carbon accumulation to climate change. *Nature* 489, 550–553. doi: 10.1038/nature11440

Laboratory (LSKJ202203901), and the National Natural Science Foundation of China (42201070).

Conflict of interest

The authors declare that the research was conducted in the absence of any commercial or financial relationships that could be construed as a potential conflict of interest.

Publisher's note

All claims expressed in this article are solely those of the authors and do not necessarily represent those of their affiliated organizations, or those of the publisher, the editors and the reviewers. Any product that may be evaluated in this article, or claim that may be made by its manufacturer, is not guaranteed or endorsed by the publisher.

Li, A. (2014). *Assessing Carbon Sink Capacity of Marine Bivalves in Hebei Province* (Master of Science. Baoding: Hebei University).

Li, Z. P., Chen, Y., Wang, G., Mu, J. D., Sun, Y. F., Yu, H. L., et al. (2023). Ecological carrying capacity and carbon sequestration potential of bivalve shellfish in marine ranching: A case study in Bohai Bay, China. *Front. Mar. Sci.* doi: 10.3389/fmars.2023.1174235

Li, A., Song, L., Jia, N., Wang, N. B., and Song, G. J. (2014). Investigation and ecological links analysis of key biological components in wetlands in Yalu river estuary. *Wetl. Sci.* 12, 374–379. doi: 10.13248/j.cnki.wetlandsci.2014.03.016

Liaoning Forestry and Grassland Bureau (2022). *Performance evaluation report for the central financial forestry reform and development funds of Dandong City 2021* (Liaoning: Liaoning Forestry and Grassland Bureau).

Liaoning Ocean and Fisheries Bureau (2015–2019). *Liaoning Province Fishery Statistics Annual Report* (Liaoning: Liaoning Ocean and Fisheries Bureau).

Liu, M. H., Deng, X. W., Liu, S. N., and Sun, M. (2022). Carbon emission analysis of Tianjin City based on LMDI method and Tapio decoupling model. *Environ. Pollut. Contr.* 44, 1397–1401. doi: 10.15985/j.cnki.1001-3865.2022.10.022

Liu, F. M., Liu, D. H., and Guo, Z. L. (2019). Study on economic value accounting of ocean carbon sink. *Mar. Sci. Bull. (Chin. Ed.)* 38, 8–19. doi: 10.11840/j.issn.1001-6392.2019.01.002

Liu, H., and Tang, Q. S. (2011). Review on worldwide study of ocean biological carbon sink. *J. Fish. Sci. Chin.* 18, 695–702. doi: 10.3724/SP.J.1118.2011.00695

Ministry of Natural Resources, People's Republic of China (2021). *Estimation method of maricultural seaweed and bivalve carbon sink-Carbon stock variation method* (People's Republic of China, Beijing: Ministry of Natural Resources).

Qi, Z. H., Wang, J., Huang, H. H., Liu, Y., Li, C. H., Chen, S. J., et al. (2012). Potential assessment of carbon sink capacity by marine bivalves and seaweeds in Guangdong province. *South China Fish. Sci.* 8, 30–35. doi: 10.3969/j.issn.2095-0780.2012.01.005

Qin, C. X., Chen, P. M., Zhang, A. K., Yuan, H. R., Li, G. Y., Shu, L. M., et al. (2015). Evaluation of ecosystem service and emergence of Wanshan Waters in Zhuhai, Guangdong Province, China. *Chin. J. Appl. Ecol.* 26, 1847–1853. doi: 10.13287/j.1001-9332.20150331.011

Quan, W., Ying, M. M., Kang, H. J., Zhou, Q. H., and Xu, C. L. (2014). The study of shellfish mariculture and carbon sink capacity in the coastal areas of Zhejiang province. *Fish. Modern.* 41, 35–38. doi: 10.3969/j.issn.1007-9580.2014.05.008

Shao, G. L., Kong, H. Z., and Li, C. (2019a). Net amount of mariculture carbon sink and its coupling relationship with economics growth of China. *Resour. Sci.* 41, 277–288. doi: 10.18402/resci.2019.02.07

Shao, G. L., Liu, B., and Li, C. (2019b). Evaluation of carbon dioxide capacity and the effects of decomposition and spatio-temporal differentiation of seawater in China's main sea area based on panel data from 9 coastal provinces in China. *Acta Ecol. Sin.* 39, 2614–2625. doi: 10.5846/stxb201801080049

- Shao, G. L., Zhu, R., and Li, C. (2018). Research on carbon balance of marine fishery in Shandong Province using the calculation results of carbon emission and carbon sink. *Chin. Fish. Econ.* 36, 4–13. doi: 10.3969/j.issn.1009-590X.2018.04.001
- Standardization Administration of the People's Republic of China (2007). *Specifications for Oceanographic Survey, Marine Biological Survey* (Beijing: General Administration of Quality Supervision, Inspection and Quarantine of the People's Republic of China).
- Tang, Q. S. (2011). Carbon sink fisheries and rapid development of modern fisheries. *Jiangxi Fish. Sci. Technol.* 2, 5–7. doi: 10.3969/j.issn.1006-3188.2011.02.002
- Tang, Q. S., Jiang, Z. J., and Mao, Y. Z. (2022). Clarification on the definitions and its relevant issues of fisheries carbon sink and carbon sink fisheries. *Prog. Fish. Sci.* 43, 01–07. doi: 10.19663/j.issn2095-9869.20220415001
- Tang, J. W., Ye, S. F., Chen, X. C., Yang, H. L., Sun, X. H., Wang, F. M., et al. (2018). Coastal blue carbon: Concept, study method, and the application to ecological restoration. *Sci. Sin. (Terrae)* 48, 661–670. doi: 10.1007/s11430-017-9181-x
- Tang, Q. S., Zhang, J. H., and Fang, J. G. (2011). Shellfish and seaweed mariculture increase atmospheric CO₂ absorption by coastal ecosystems. *Mar. Ecol. Prog. Ser.* 424, 97–104. doi: 10.3354/meps08979
- Tapio, P. (2005). Towards a theory of decoupling: degrees of decoupling in the EU and the case of road traffic in Finland between 1970 and 2001. *Transp. Policy.* 12, 137–151. doi: 10.1016/j.tranpol.2005.01.001
- Trégarot, E., Touron-Gardic, G., Cornet, C. C., and Failler, P. (2020). Valuation of coastal ecosystem services in the large marine ecosystems of Africa. *Environ. Dev.* 36, 100584. doi: 10.1016/j.envdev.2020.100584
- Wang, X., Feng, J., Lin, C., Liu, H., Chen, M., and Zhang, Y. (2022). Structural and functional improvements of coastal ecosystem based on artificial oyster reef construction in the Bohai Sea, China. *Front. Mar. Sci.* 2022. doi: 10.3389/fmars.2022.829557
- Wang, J., Feng, L., Tang, X., Bentley, Y., and Hook, M. (2017). The implications of fossil fuel supply constraints on climate change projections: a supply-side analysis. *Futures* 86, 58–72. doi: 10.1016/j.futures.2016.04.007
- Wen, R., Zhang, J. W., Gao, C., Gao, Y., and Yang, Y. (2022). Study on carbon sink price accounting of farmed shellfish. *Ocean Dev. Manage.* 3, 16–23. doi: 10.20016/j.cnki.hykygl.20220330.007
- Yin, Y. W., Che, J., Wei, H. F., and Luo, C. H. (2022). Carbon sink capacity assessment of mariculture shellfish and algae in Liaoning province from 2010 to 2019. *Ocean Dev. Manage.* 9, 17–23. doi: 10.20016/j.cnki.hykygl.20220929.005
- Yu, K. (2022). *Study on the present situation and development countermeasures of mariculture industry in Dandong Donggang* (Master of Science, Dalian: Dalian Ocean University).
- Yu, Z. A., Xie, X., Zhu, S. W., Du, S. K., Li, X. D., Li, D. C., et al. (2020). Potential assessment of carbon sink capacity by bivalves and seaweeds in mariculture in Liaoning Province. *J. Dalian Ocean University.* 35, 382–386. doi: 10.16535/j.cnki.dlhyxb.2019-121
- Yu, Y. R., Yang, R., Chen, H. M., Chen, J. J., and Luo, Q. J. (2023). Spatiotemporal differentiation and influencing factors of carbon sink economic value of cultivated seaweeds in China. *J. Fish. Chin.*, 1–15.
- Yu, B. Y., Zhao, G. P., An, R. Y., Chen, J. M., Tan, J. X., and Li, X. Y. (2021). Research on China's CO₂ emission pathway under carbon neutral target. *J. B. Inst. Techno.* 23, 17–24. doi: 10.15918/j.jbitss1009-3370.2021.7380
- Yue, D. D., and Wang, L. M. (2012). Relationship between mariculture shellfish production and its carbon sink in China. *Jiangsu Agric. Sci.* 40, 246–248. doi: 10.15889/j.issn.1002-1302.2012.11.042
- Zhang, J. H., Fang, J. G., and Tang, Q. S. (2005). The contribution of shellfish and seaweed mariculture in China to the carbon cycle of coastal ecosystem. *Advan. Earth Sci.* 20, 359–365. doi: 10.3321/j.issn:1001-8166.2005.03.014
- Zhang, J. H., Fang, J. G., Tang, Q. S., and Ren, L. H. (2013). Carbon sequestration rate of the scallop *Chlamys farreri* cultivated indifferent areas of Sanggou Bay. *Progr. Fish. Sci.* 34, 12–16. doi: 10.3969/j.issn.1000-7075.2013.01.002
- Zhao, Q., Zhang, Y. L., Cui, C., Zhang, X. W., Qi, Z. L., and Sun, S. Y. (2022). Carbon sink intensity assessment and decoupling analysis of shellfish and macroalgae marine culture in Hebei Province. *Hebei Fish.* 5, 44. doi: 10.3969/j.issn.1004-6755.2022.05.011
- Zheng, Y. H., Jin, R. J., Zhang, X. J., Wang, Q. X., and Wu, J. P. (2019). The considerable environmental benefits of seaweed aquaculture in China. *Stoch. Env. Res. Risk Assess.* 33, 1203–1221. doi: 10.1007/s00477-019-01685-z
- Zhong, W. Z., Sun, Y. H., and Qing, D. R. (2012). Study on the decoupling relationship between economic growth, energy consumption and carbon dioxide emissions. *J. Audit Economics.* 27, 99–105. doi: 10.3969/j.issn.1004-4833.2012.06.012