



OPEN ACCESS

EDITED BY
Luciano Pinotti,
University of Milan, Italy

REVIEWED BY
Etienne Labussière,
INRA Centre Bretagne-Normandie,
France
Margherita Caccamo,
Consorzio Ricerca Filiera Lattiero-
Caseari Ragusa (CoRFiLaC), Italy

*CORRESPONDENCE
Marcos Inacio Marcondes
marcos.marcondes@wsu.edu

SPECIALTY SECTION
This article was submitted to
Animal Nutrition,
a section of the journal
Frontiers in Animal Science

RECEIVED 13 April 2022

ACCEPTED 10 August 2022

PUBLISHED 07 September 2022

CITATION

Silvestre T, Ferreira AL, Machado FS,
Campos MM, Tomich TR, Pereira LGR,
Rodrigues PHM and Marcondes MI
(2022) Energy requirements of
Holstein, Gyr, and Holstein × Gyr
crossbred heifers using the
respirometry technique.
Front. Anim. Sci. 3:919515.
doi: 10.3389/fanim.2022.919515

COPYRIGHT

© 2022 Silvestre, Ferreira, Machado,
Campos, Tomich, Pereira, Rodrigues
and Marcondes. This is an open-access
article distributed under the terms of
the [Creative Commons Attribution
License \(CC BY\)](https://creativecommons.org/licenses/by/4.0/). The use, distribution
or reproduction in other forums is
permitted, provided the original
author(s) and the copyright owner(s)
are credited and that the original
publication in this journal is cited, in
accordance with accepted academic
practice. No use, distribution or
reproduction is permitted which does
not comply with these terms.

Energy requirements of Holstein, Gyr, and Holstein × Gyr crossbred heifers using the respirometry technique

Taina Silvestre¹, Alexandre Lima Ferreira²,
Fernanda Samarini Machado³, Mariana Magalhaes Campos³,
Thierry Ribeiro Tomich³, Luiz Gustavo Ribeiro Pereira³,
Paulo Henrique Mazza Rodrigues¹
and Marcos Inacio Marcondes^{4*}

¹College of Veterinary Medicine and Animal Science, University of Sao Paulo, Pirassununga, Brazil,

²Veterinary School, Universidade Federal de Minas Gerais, Belo Horizonte, Brazil, ³Brazilian
Agricultural Research Corporation, Embrapa Dairy Cattle, Minas Gerais, Brazil, ⁴Department of
Animal Sciences, Washington State University, Pullman, WA, United States

We aimed to determine the energy requirements for maintenance and gain of 18 prepubertal dairy heifers of three breed compositions (BC; Holstein, Gyr, and Holstein × Gyr). Diets were formulated for gains of 0, 400, and 800 g/day, corresponding to 1.0x, 1.5x, and 2.0x maintenance, respectively. Each dairy BC had six animals with an initial body weight (iBW) of 219.8 ± 32 kg, 215.8 ± 33 kg, and 228.3 ± 33 kg for Holstein, Gyr, and Holstein × Gyr, respectively. The experiment was designed as a completely randomized design in a factorial scheme 3×3 [three BC and three feeding levels (FL)]. Digestibility and metabolism assays were performed to determine energy losses through feces and urine. Heat production was determined using the continuous measurement of oxygen consumption, carbon dioxide production, and methane emissions in respiration chambers. Energy requirements for maintenance (NEm) were calculated based on the relationship between heat production (HP) and metabolizable energy intake (MEI). The efficiency of use of metabolizable energy for maintenance (k_m) was obtained from the ratio between NEm and metabolizable energy requirements for maintenance. The net energy requirements for growth (NEg) were estimated from the model $RE = \beta_0 \times EBW^{0.75} \times EBG_{\beta 1}$, where RE is the retained energy (Mcal/day), EBW is empty body weight ($kg^{0.75}$), and EBG is the empty body gain (kg/day). The efficiency of use of metabolizable energy for gain (k_g) was estimated as the slope of the regression between RE and MEI for gain. Gyr heifers presented NEm 15% lower (98 kcal/kg of $BW^{0.75}$) than HG crossbred animals. Holstein and crossbred heifers had similar NEm, 102 and 112 kcal/kg of $BW^{0.75}$, respectively. The k_m was 0.71, 0.74, and 0.75 for HG, Holstein, and Gyr, respectively. Net energy requirement for gain (NEg) did not differ across BC, and a single equation was fit for all BC: $RE = 0.069 \times BW^{0.75} \times BGW^{0.852}$. A single k_g of 0.65 was observed for all three BC. Breed composition affected the energy requirements for maintenance and the energy partition, and those differences should be

considered when estimating requirements for Gyr, Holstein × Gyr crossbred, and Holstein heifers.

KEYWORDS

bioenergetics, breed composition, Girolando, indirect calorimetry, maintenance

Introduction

The energy requirements of dairy cows were established from experiments conducted in the 1970s involving comparative slaughters and indirect calorimetry (Moe et al., 1972; NRC, 2001). The eighth revised version of the *Nutrient Requirements of Dairy Cattle* (NASEM, 2021) describes nutrient requirement as the daily amount of a certain nutrient necessary to meet a healthy cow's needs for maintenance, activity, growth, reproduction, and lactation without changing the body reserves or the physiological status. Because of the intensive selection for milk production over the past years, research has suggested that a modern dairy cow has greater metabolic rates than in the past (NASEM 2021). For example, Moraes et al. (2015) reported that the energy requirements for dairy cows had increased over the years, given their increased DMI and milk yield.

To our knowledge, studies measuring requirements for crossbred cattle are scarce, and given the genetic improvements on those animals, newer data are needed. The Zebu cattle (*B. taurus indicus*) and their crossbreds with European dairy cattle breeds (*B. t. taurus*) provide the primary basis for the Holstein × Gyr (HG) cattle. This crossbreeding was developed in Brazil back in 1940 and focused on combining the high milk production of Holstein and the adaptability and rusticity of the Gyr breed (Silva et al., 2017). The Zebu cattle, i.e., Gyr, and HG cattle are the basis of the Brazilian dairy herd since they represent more than 70% of the herd and there is an intense genetic breeding improvement with this breed since the 1980s (Carvalho et al., 2018). Furthermore, based on official data of the Brazilian Trade and Investment Agency, Brazilian bovine semen (mostly Gyr and HG semen) was exported to 21 countries, and the top five markets were Argentina, Angola, Costa Rica, Bolivia, and United Arab Emirates, which represent 2.5 million dollars (ASBIA, 2019).

Therefore, it is clear that Gyr and HG cattle have a high economic value worldwide due to their genetic merit to achieve milk production and adaptability to tropical and sub-tropical climates. Additionally, meeting the dietary needs effectively can reduce the nutrient's excretion to the environment and greenhouse gas emissions (Knapp et al., 2014). Thus, it is crucial to investigate the nutritional requirements of these breeds to effectively meet production targets because

unbalanced diets may affect the proper growth and heifer's development, resulting in adverse effects on the lactation performance (Hoffman et al., 1996; Daniels et al., 2009; Albino et al., 2015).

A previous study in our laboratory (Silvestre et al., 2021) has shown that the recommendations proposed by NRC for Holstein heifers of 220 kg of BW allowed an average daily gain 50% greater than the formulated, demonstrating an incompatibility of the use of this system for dairy heifers raised in the tropics. However, a new version of INRA (2018) was recently released using a more updated database and more powerful statistical tools, but those new models were never validated in animals raised in tropical countries. Thus, we hypothesized that the NRC (2001) would underestimate the energy requirements of Gyr and HG crossbred heifers and that the requirements of Holstein heifers under tropical environments would differ from those of Gyr and HG crossbred heifers. In addition, we hypothesized that energy requirements estimated using INRA (2018) would be more adequate than those of the NRC (2001). Therefore, the objective of this study was to evaluate the effects of breed composition on the net and metabolizable energy requirements for the maintenance and gain of Holstein, Gyr, and HG prepubertal dairy heifers and compare the estimates with those of NRC (2001) and INRA (2018).

Materials and methods

The protocol for the care and manipulation of animals for the accomplishment of this experiment was approved by the Ethics Committee on Animal Use of the University of Sao Paulo Protocol no. 3046. The experiment was performed at the Multi-use Livestock Complex on Livestock Bioefficiency and Sustainability at Embrapa Dairy Cattle, Coronel Pacheco, MG, Brazil and lasted for 90 days.

Animals and experimental design and treatments

Eighteen dairy heifers of three breed compositions (BC)—purebred Holstein, purebred Gyr, and Holstein × Gyr crossbred—

were used. Each dairy BC had six animals with an initial body weight (iBW) of 219.8 ± 32 kg, 215.8 ± 33 kg, and 228.3 ± 33 kg for Holstein, Gyr, and Holstein \times Gyr, respectively. Heifers were housed in a tie-stall facility with individual feed and water bins. All heifers were contemporary and aged 15 ± 3 months. To promote variation in energy intake to estimate energy requirements, we designed the experiment as a completely randomized design in a factorial scheme 3×3 [three BC and three feeding levels (FL)]. Diets were formulated using [NRC \(2001\)](#) and fed to supply metabolizable energy intake to allow gains of 0, 400, and 800 g/day, corresponding to 1.0 \times , 1.5 \times , and 2.0 \times maintenance level, respectively. Animals were fed a total mixed ration (TMR) composed of corn silage and concentrate supplement [85:15 w/w based on the dry matter (DM)], and the ingredient and chemical composition are presented in [Table 1](#). The BW of each animal was measured every week and used to adjust the amount of feed offered to each heifer.

Feeding and apparent total-tract digestibility

The feed was provided once daily in the morning (0800 h). All feeds offered were weighed daily, and samples were dried to

determine DM content; dry matter intake was calculated per animal daily.

Heifers were held in a metabolism stall before measurements and nutrient digestibility was measured. The digestibility assay lasted 3 days according to ([Rotta et al., 2014](#)), and was used to collect feces and spot urine samples. Two people were on duty in shifts of 24 h during the 72 h. We collected the feces as soon as they were produced, using a scoop shovel. Each heifer had one container, and immediately after defecating, the collected feces were stored inside the container. These procedures prevented feces contamination by urine and the need to keep the heifers in metabolism crates, which would influence animal behavior. At the end of each sampling day, all feces of each animal were weighed. After homogenization, a subsample was taken and frozen for subsequent analysis of gross energy (GE).

Urine samples of 50 mL were collected from all animals over 3 days at four times per day (07:00, 13:00, 19:00, and 01:00 h) by massage on the vulva, filtered in triple-layer gauze, elaborating composite samples of 200 ml per animal. Samples were stored at -20°C for later analysis of GE concentration. Urinary volume was estimated using creatinine concentration as a marker and assuming a daily creatinine excretion of 32.27 mg/day ([Chizzotti et al., 2008](#)).

Energy requirement measurement by respirometry technique

After the digestibility assay, respiration measurements were performed. Live weight was measured daily when the heifers entered and left the respiration chambers. Non-violent training and adaptation to the respirometry chamber were carried out with the heifers, according to [Machado et al. \(2016\)](#).

The open-circuit respiration system used consists of two respiration chambers with a total volume of 21.1 m^3 . The room temperature and relative humidity were kept at $23 \pm 0.5^{\circ}\text{C}$ and $55 \pm 5\%$, respectively. Each chamber was equipped with its own air treatment unit with a recirculating fan ($800 \text{ m}^3/\text{h}$) and air filters. Each chamber was fitted with an air outlet with a filter box (CSL-851-200HC, Solberg Manufacturing Inc., Itasca, IL, USA), with the air being continuously drawn into the chamber by a sealed rotary pump connected to a mass flow regulator (FlowKit model FK-500, Sable Systems International, Las Vegas, NV, USA). The two chambers shared a common gas analyzer and data acquisition system (Sable Systems International, Las Vegas, NV, USA). Gas samples from the two chambers and the ambient air (baseline) were continuously sampled at 0.5 L/min. A diaphragm sub-sampling pump (SS-4 Sub-Sampler Pump) was used to deliver the subsamples of air to the CH_4 analyzer at 200 ml/min. Every 15 min, a subsample was taken over 5 min from ambient baseline air and from each chamber. The samples were delivered to the respiration analyzer (Sable Systems International, Las Vegas, NV, USA), first for analysis of water

TABLE 1 Ingredients and chemical composition of the experimental diets.

Item	Feeding levels ¹	
	1.0–1.5 \times	2.0 \times
Formulation	g/kg DM	
Corn silage	851.0	806.0
Soybean meal	120.0	153.0
Ground corn	0.0	18.0
Urea	11.0	9.0
Ammonium sulfate	5.0	4.0
Mineral mix ²	8.0	6.0
Mineral salt	5.0	4.0
Composition	g/kg DM	
Dry matter	373.6	373.2
Crude protein	158.9	145.2
Ether extract	28.3	27.8
Neutral detergent fiber	400.6	404.1
Non-fiber carbohydrates	287.6	300.4
Starch	219.6	223.2
Energy density	Mcal/kg	
Gross energy	4.39	4.43
Metabolizable energy	2.62	2.73

¹Feeding levels: 1.0 corresponded to 0 g/day, 1.5 corresponded to 400 g/day, and 2.0 corresponded to 800 g/day of performance; ² Composition: Ca, 190 g/kg; P, 60 g/kg; Na, 70 g/kg; Mg, 20 g/kg; Co, 15 mg/kg; Cu, 700 mg/kg; Mn, 1.600 mg/kg; Se, 19 mg/kg; Zn, 2.500 mg/kg; I, 40 mg/kg.

vapor (RH-300 Water Vapor Analyzer) and then for gas analysis, O₂ (FC-10 Oxygen Analyzer), CO₂ (CA-10A Carbon Dioxide Analyzer), and CH₄ (MA-10, Methane Analyzer) (Sable Systems International, Las Vegas, USA). Calibration of the CO₂ and CH₄ analyzers (zero and span) is made before the beginning of each measurement.

The O₂ and water vapor analyzers are calibrated once a week. For zeroing the CO₂, CH₄, and O₂ analyzers, nitrogen gas (99.999%) is used, and CO₂ and CH₄ are spanned by using a mixed gas (0.5% CO₂ and 0.1% CH₄ in N₂ as carrier). The O₂ analyzer is spanned with dry ambient air, scrubbed from water by using magnesium perchlorate, as it shows an almost constant concentration of 20.95%. A zero value of the water vapor analyzer is achieved with the dry air, and the value for spanning is calculated following the equation: $WVP = BP \times [(F_iO_2 - FiO_2)/F_iO_2]$, where WVP is the water vapor pressure in the same units as barometric pressure (kPa), BP is the barometric pressure, and F_iO₂ and FiO₂ are O₂ fractional concentrations of dry and wet ambient air, respectively.

The average recoveries for CO₂ and CH₄ were (mean ± SD) 99.0 ± 2.1% and 98.0 ± 2.7%, respectively. Recovery in each chamber was estimated using a portable mass flowmeter with a totalizer function (MC-50SLPM-D, Alicat Scientific Inc., Tucson, AZ, USA). Data acquisition and analysis software (ExpeData v.1.7.5, Sable Systems International, Las Vegas, USA) was used to estimate O₂, CO₂, and CH₄ concentrations; flow rate; temperature; barometric pressure; and water vapor pressure during the measurement period. Gas measurements were corrected for differences in water vapor, lag time, and drift, with CH₄ emission (L/min) calculated at 15-min intervals for each chamber. Urinary nitrogen was neglected in Brouwer's equation because of a minimal contribution to HP compared with O₂ and CO₂ (Verstegen et al., 1987).

Heifers were housed in the chambers for about 22 h when we took gas exchange measurements and heat production (HP) in fed animals. After 22-h, measurements were interrupted, and heifers were removed for 2 h for cleaning the chambers.

Calculations

The HP was determined from the continuous measurement of oxygen consumption, carbon dioxide production, and CH₄ emissions, according to Brouwer (1965) equation. The respiratory quotient was calculated using the ratio of CO₂ produced to the O₂ consumed. Methane emission was calculated over the 22-h measurement period with correction for the recovery level in each chamber. Digestible energy intake (DEI; Mcal/day) was calculated by subtracting the GE consumed by the energy losses from feces. Metabolizable energy intake (MEI; Mcal/day) was calculated by subtracting the DE intake by the energy losses from urine, CH₄, and daily heat production (Blaxter and Clapperton, 1965). The energy loss by CH₄ production was calculated considering 9.45 kcal/L CH₄

(Brouwer, 1965). The GE content of the TMR, refusals, and fecal and urine samples were determined in an adiabatic calorimetric pump, IKA WERKE/model C-5000 ADI, Control (AOAC, 2005).

To estimate the energy requirements for maintenance (NEm), a nonlinear exponential model was used to describe the relationship between heat production HP (Mcal/kg of BW^{0.75}) and ME intake (Mcal/kg of BW^{0.75}) according to the following model (Lofgreen and Garret, 1968):

$$HP = \beta_0 \times e^{\beta_1 \times MEI}$$

Under this model, β_0 represents the NEm (Mcal/kg of BW^{0.75}). By the iterative method, the point where MEI equals HP can be determined as the metabolizable energy requirements for maintenance (MEM, Mcal/kg of BW^{0.75}).

The efficiency of use of MEM (k_m) was obtained from the ratio between NEm and MEM (NRC, 1996):

$$k_m = \frac{NEm}{MEM}$$

Retained energy (RE; Mcal/kg of BW^{0.75}) was calculated as the difference between MEI (Mcal/kg of BW^{0.75}) and HP (Mcal/kg of BW^{0.75}).

To predict the energy requirements for gain (NEg), the following model was used (NASEM (National Academies of Sciences, Engineering, and Medicine), 2016):

$$RE = \beta_0 \times BW^{0.75} \times BWG^{\beta_1}$$

where RE is the retained energy (Mcal/kg of BW^{0.75}), BW^{0.75} is the body weight, BWG is the body gain (kg/day), and β_0 and β_1 are regression parameters.

To determine the ME requirements for gain (MEg), it was necessary to estimate the efficiency of use of ME for gain (k_g), which was calculated as the slope of the linear regression between RE (Mcal/kg of BW^{0.75}) and MEIg, expressed in Mcal/kg of BW^{0.75} (Ferrel and Jenkins, 1988):

$$RE = \beta_0 + (\beta_1 \times MEIg)$$

where RE is retained energy (Mcal/kg of BW^{0.75}) and MEIg is the metabolizable energy intake for gain (Mcal/kg of BW^{0.75}), which was estimated as the difference between total MEI (Mcal/kg of BW^{0.75}) and MEIm (Mcal/kg of BW^{0.75}) calculated as described above, and β_0 and β_1 are regression parameters. Thus, under this model, β_1 represents the k_g .

The MEg was then obtained from the relationship between NEg and MEg:

$$MEg = \frac{NEg}{k_g}$$

Lastly, the total ME requirements (MEt) were calculated according to the following model: MEt = MEM + MEg, where MEM is the ME requirements for maintenance (Mcal/kg of

$BW^{0.75}$) and MEg is the ME requirements for gain (Mcal/kg of $BW^{0.75}$).

Statistical analysis

The models described to estimate energy requirements (RE and HP models) were fit according to linear and nonlinear models using PROC MIXED and PROC NL MIXED, respectively, of SAS University Edition. The data were analyzed as nonlinear models and were adjusted by the Gauss-Newton method. The effect of breed composition was tested in each parameter of all models. Statistical differences were considered at $p < 0.10$. Data are presented as least squares means.

Results

The current study was designed to estimate the energy requirements of prepubertal heifers using the indirect calorimetry technique and data regarding DMI and animal performance can be found at Silvestre et al. (2021). In addition, the energy partitioning data are presented in Supplementary Table 1. The NEm requirements (Figure 1) were obtained as the intercept of the equation between HP and MEI by Lofgreen and Garrett (1968). Gyr heifers presented NEm 15% lower ($p = 0.05$; 98 kcal/kg of $BW^{0.75}$) than HG crossbred animals. As a result, we observed values of 102 kcal/kg

of $BW^{0.75}$ and 112 kcal/kg of $BW^{0.75}$ of NEm for Holstein and HG crossbred, respectively ($p > 0.05$).

As we observed a BC effect on NEm, consequently, we had a BC effect on MEm requirements ($\beta_0 - p > 0.043$). Using the iterative method, MEm was calculated as 138 kcal/kg of $BW^{0.75}$, 131 kcal/kg of $BW^{0.75}$, and 158 kcal/kg of $BW^{0.75}$ for Holstein, Gyr, and HG crossbred, respectively (Figure 1). As a result, there was a slight BC effect on the efficiency of use of MEm (k_m), once there were no differences in β_1 among BC ($p > 0.232$). Thus, the results indicated that k_m was lower in HG crossbred heifers ($k_m = 0.709$). Furthermore, the k_m for HG crossbred cattle was lower than those observed for Holstein and Gyr, which were 0.742 and 0.753, respectively.

To estimate NEg, RE was regressed as a function of metabolic body weight ($BW^{0.75}$) and ADG (Figure 2), where NEg is measured in Mcal/day; BW and ADG are measured in kg/day. The BC had no effect on both β_0 ($p = 0.597$) or β_1 ($p = 0.165$) of NEg equation. Consequently, a single equation was fit for all BC: $RE = 0.069 \times BW^{0.75} \times BGW^{0.852}$ (MSE = 1.865; $R^2 = 0.816$). As it can be observed, a heavier heifer requires a greater amount of energy within the same ADG.

The k_g was obtained as a slope of the regression between RE (Mcal/day) and MEIg (Mcal/ $BW^{0.75}$ /day). The BC did not affect both β_0 ($p = 0.861$) and β_1 ($p = 0.869$); thus, a single equation was fit (Figure 3): $RE = -0.001 + 0.653 \times MEIg$ (MSE = 0.00022; $R^2 = 0.834$). Therefore, the suggested k_g value for prepubertal dairy heifers raised under tropical conditions is 0.653 (Figure 3).

The ME requirements estimates proposed by the NRC (2001) and INRA (2018) for young cattle as well the total ME

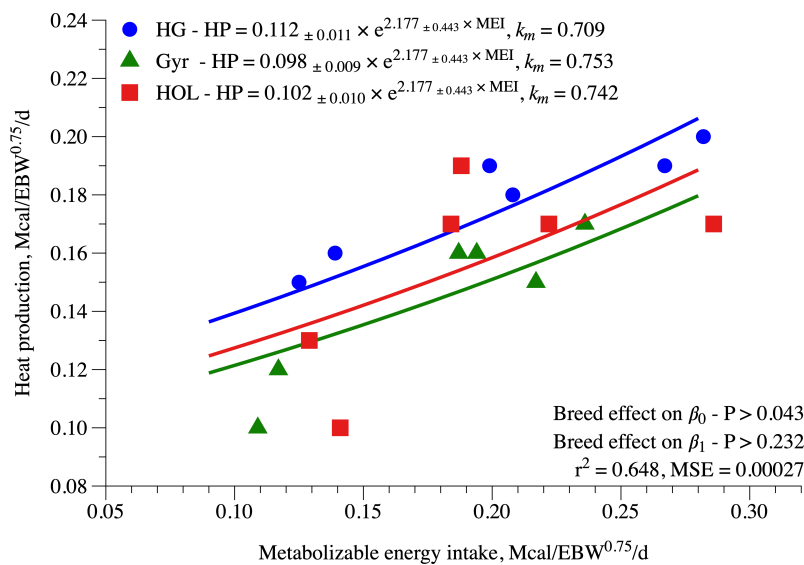


FIGURE 1 Prediction equation of the net energy requirements (NEm; Mcal/day) of dairy heifers of three breed compositions (BC) fed at three feeding levels.

requirements (MEt) for dairy heifers raised on tropical conditions are described in Figure 4. Comparing the BC evaluated in this study, we observed that HG crossbred had higher energy requirements (Figures 4A, C, respectively) than those proposed by NRC (2001) and INRA (2018). Interestingly, the requirements of metabolizable energy for maintenance as well the MEt of Holstein heifers were greater than that reported by the NRC (2001).

Discussion

Our hypothesis that the NEm would differ among BC was confirmed as we did observe differences ($p < 0.05$) on the requirements across the BC evaluated. According to (NRC 2000), *B. indicus* cattle have 10% lower energy requirements than *B. taurus*, and this value might be intermediate to crossbred (*B. indicus* × *B. taurus*) cattle. Holstein and HG crossbred heifers presented similar (NEm = 102 kcal/kg of BW^{0.75} and 112 kcal/kg of BW^{0.75}, respectively) requirements in the present study, suggesting that HG crossbred heifers may require the same amount of energy as the pure breeds, i.e., *B. taurus* cattle. However, our data are greater than that observed by Castro et al. (NRC, 2000; 72 kcal/kg of EBW^{0.75}) for HG crossbred heifers, regardless of the breed we used. Although both studies were conducted during the post-weaning phase, the animals of Castro et al. (2020) were lighter (103 kg) than the ones we used in our study (221 kg). A value of NEm equal to 74.8 kcal/kg of EBW^{0.75} was reported by Oss et al., (2017); however, this author evaluated growing crossbred bulls. The NRC (2001) dairy cattle

model reports a NEm value of 86 kcal of BW^{0.75}, whereas the INRA (2018) estimated it as 101 kcal of BW^{0.75}.

Additionally, the eighth revised edition of (NASEM 2021) supports a higher value for NEm, which is 100 kcal of BW^{0.75}. The present committee recognized that given the intense milk selection over the past 50 years, research has suggested that the modern dairy cow has greater metabolic rates than before (NASEM 2021). This is in line with the current study findings and the latest version of the NASEM (National Academies of Sciences, Engineering, and Medicine) (2016) also supports a higher value for beef cattle. Recently, Morris and Kononoff (2021) (Rotta et al., 2014) compared the NEm requirements between lactation and dry cows (NEm = 120 vs. 103 kcal/BW^{0.75}, respectively) and reported no differences. In agreement with the current study, the previous authors observed a greater NEm value than those suggested by the NRC (2001), which is similar to our results. This suggests that the NRC (2001) estimates may have been underpredicting dairy cow's requirements, which seems a limitation of using that system.

Under tropical conditions, Carvalho et al. (2018) reported values of 102 kcal/kg of BW^{0.75} of NEm for Gyr and Holstein × Gyr lactating cows with no difference between breeds. This value was obtained by a respirometry technique and was similar to that found in the present study. The recommendations by Castro et al. (2020), Oss et al. (2017), and NRC (2001) were estimated using the comparative slaughter technique, while the present study and those of Morris and Kononoff (2021) and Carvalho et al. (2018) were done using respiration chambers. We suspect that the estimation method plays a crucial role in those numbers, and the reason for that difference may be linked to how the support

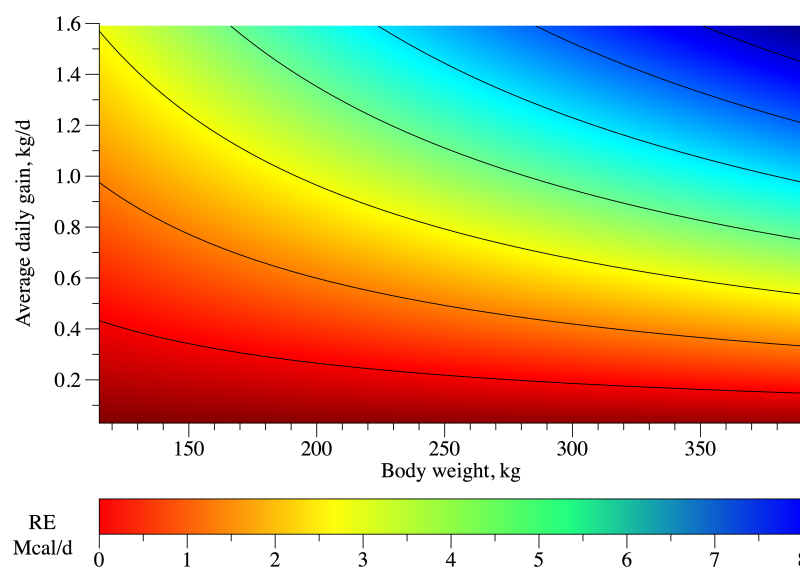


FIGURE 2 Representation of retained energy (RE; Mcal/day) equation of dairy heifers of three breed compositions (BC) fed at three feeding levels (FL); .

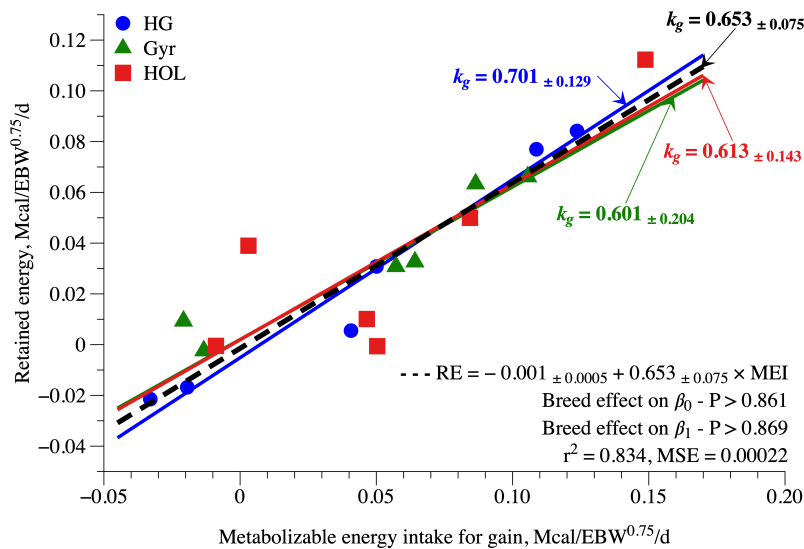


FIGURE 3

Efficiency of use of metabolizable energy for gain (k_g) of Holstein, Gyr, and Holstein \times Gyr dairy heifers fed at three feeding levels (FL). The blue, green, and red dashed lines represent the regressions for HG, Gyr, and Holstein, respectively. The black dashed line represents the general trend without breed effect.

metabolism (H_iE_v ; [Willians and Jenkins, 2003](#)) is accounted for in each methodology. The H_iE_v increases energy demand when the animal changes from a maintenance state to a growing or production state. Whether the H_iE_v should be accounted for as maintenance or production is still debatable. When the respiration chamber is applied, we usually observe a greater NEm; thus, the H_iE_v is accounted in the maintenance, and we observe a higher efficiency of use of metabolizable energy for gain (k_g), therefore lower requirements of metabolizable energy for gain, whereas when the comparative slaughter is applied, we usually observe a lesser NEm, as well as a lesser k_g , and thus, the H_iE_v is accounted in the requirements for gain. This has been previously discussed by [Marcondes et al. \(2013\)](#), and our relatively high value of k_g (0.653, [Figure 4](#)) supports this speculation. Furthermore, as the present study applied the respirometry technique and the heifer's physical activity as time standing and laying down were not recorded, these variables should be considered when interpreting the results of the current study.

Our estimates of MEm requirements for HG crossbred heifers were 15% greater than that found in Holstein and 17% greater than Gyr heifers. Recent studies ([Silva et al., 2017](#); [Carvalho et al., 2018](#)) on genetic trends for HG crossbred animals reported an improvement in milk yield of HG when compared to the average of Gyr and Holstein breeds, likely due to the greater heterosis in HG animals. Thus, animals with greater potential for milk production will have an increased maintenance support metabolism, reflecting on the greater MEm

observed in our animals ([Marcondes et al., 2013](#)). Nevertheless, future studies are still needed to confirm this hypothesis since this study evaluated prepubertal heifers and not lactating cows. However, the current [NASEM \(2021\)](#) suggests that the maintenance requirements may be greater for lactating than nonlactating cows for several reasons, including a greater mass of internal organs and more heat production per unit mass than skeletal muscle.

The estimates of k_m for prepubertal heifers, determined as the ratio between NEm and Mem, were significantly different among the three evaluated BC. Our calculated k_m value (0.71) for HG crossbred was 5% lower than the other two BC. The [NASEM \(2021\)](#) reports that the k_m value has been increased from 0.64 to 0.66. Supporting our findings, [Morris and Knonoff \(2021\)](#) observed a greater k_m value for dry cows (0.71) compared to lactating (0.69) Jersey cows, suggesting that dry cows might be more efficient utilizing ME for maintenance purposes than for milk production. Evidence indicates that the variation on k_m between *B. indicus* and *B. taurus* can be affected by the plane of nutrition and body composition ([Garret, 1980](#)). This is in line with our study, as we did find a BC effect on k_m . [Subepang et al. \(2018\)](#) reported that k_m differences between purebred and crossbred cattle might be explained by the level of protein turnover, suggesting that *B. indicus* cattle are efficient when using MEm due to their lower protein turnover. [Solis et al. \(1988\)](#), comparing energy requirements across five different breeds, found that beef breeds were energetically more efficient

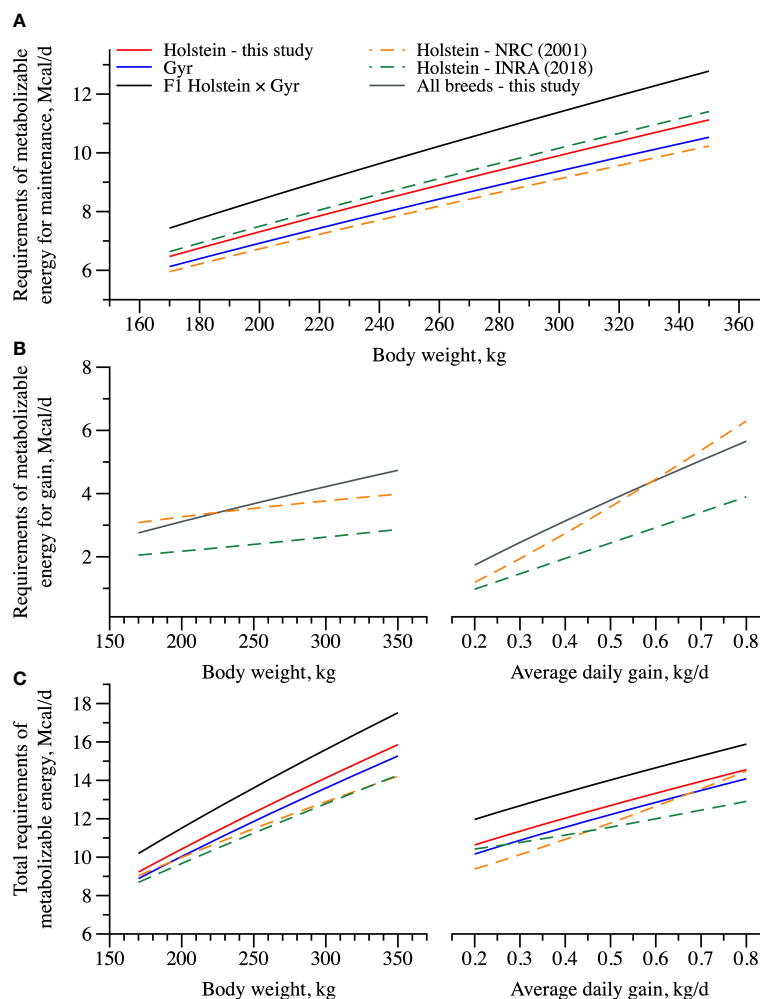


FIGURE 4

Total requirements of metabolizable energy of Holstein, Gyr, and F1 Holstein \times Gyr dairy heifers estimated using a BW of 260 kg and an ADG of 0.5 kg/day, and by the models proposed by the INRA (2018) and the NRC (2001).

in using ME for maintenance than dairy breeds. Contrasting this finding, the Gyr heifers in the current study showed a similar k_m compared to Holstein heifers.

As the NEg (Mcal/BW^{0.75}) and k_g were not affected by BC, a single equation was built for each parameter. The intercept of the equation to estimate NEg was 0.069, which is similar to that observed by Silva et al. (2018) for prepubertal HG crossbred heifers (0.068). Considering heifer's average BW in this study (221 kg) and an ADG of 0.5 kg/day, the NEg calculated is 2.19 Mcal/day. For the same animal, the NRC (2001) suggests a value of 1.18 Mcal/day, and the INRA (2018) suggests a NEg of 1.89 Mcal/BW^{0.75}/day. Thus, our calculated NEg values are 86% and 16% greater than those reported by NRC (2001) and INRA (2018), respectively. Lastly, although our NEg was 86% higher than that reported by the NRC (2001), we speculate that this is due to the heifers' body gain composition. Supporting our

findings, Marcondes et al. (2021) reported that for animals with the same weight and ADG, HG animals deposit more fat than Holstein animals because of their lower mature BW. The efficiency of use of metabolizable energy for gain ($k_g = 0.65$ on average) found is numerically greater than that reported by the NASEM (2021), which is 0.60 for nonlactating cows. As mentioned above, the BC did not affect the k_g ; however, it is essential to point out that the k_g observed for Holstein heifers was 0.61, very close to those reported by NASEM (2021). Thus, the greater energy efficiency for fat synthesis might indicate that Holstein heifers have a higher efficiency for gain than the other two BC. Silva et al. (2018) suggest a k_g of 0.41 for crossbred HG heifers of 251 kg, and comparing this study to ours, this difference may be related to the methodology applied, comparative slaughter vs. respirometry, as described above. Silva et al. (2018) used the comparative slaughter technique to

estimate their animals' requirements, which reflected in a lower k_g to account for the support metabolism (Willians and Jenkins, 2003).

Interestingly, when comparing our data with other systems, total ME requirements were greater for HG crossbred (NRC, 2001; INRA, 2018). Looking at Figures 4A,B, we can observe that the difference in ME_m requirements for a heifer weighing from 150 to 350 kg of BW with a target ADG varying from 0.2 to 0.8 kg/day was higher from those predicted on both systems, INRA (2018) and NRC (2001). Those differences were mainly associated with the greater requirements for maintenance for HG animals than those suggested by the NRC (2001) and INRA (2018) as already discussed above, thus implying that new research is warranted to confirm these greater maintenance requirements of HG and if that is due to increased support metabolism as suggested.

Conclusions

We hypothesized that the NRC (2001) would underestimate the energy requirements of Gyr and HG crossbred heifers and that the requirements of Holstein heifers under tropical environments would differ from Gyr and HG. Confirming our hypothesis, the net and metabolizable energy requirements for Gyr and crossbred heifers were higher than those described by the NRC (2001). Secondly, the estimates of the INRA (2018) were slightly lower than those observed in this study. Lastly, we observed significant differences in energy requirements among breeds, which should be considered when calculating requirements for prepubertal heifers.

Data availability statement

The raw data supporting the conclusions of this article will be made available by the authors, without undue reservation.

Ethics statement

The animal study was reviewed and approved by Ethics Committee on Animal Use of the University of Sao Paulo Protocol no. 3046. Written informed consent was obtained from the owners for the participation of their animals in this study.

Author contributions

TS: conducting the experiment, data curation, formal analysis, and writing the original draft. AF, FM, MC, TT, LP, and PR: conceptualization, methodology, and data curation. MM: data curation and validation. All authors contributed to the manuscript and approved the submitted version.

Funding

The current experiment was supported by the Minas Gerais State Research Support Foundation (FAPEMIG), the National Council for Scientific and Technological Development (CNPq), Higher Education Personnel Improvement Coordination (CAPES), the National Institute of Science and Technology of Animal Science (INCT-CA), and EMBRAPA.

Conflict of interest

The authors declare that the research was conducted in the absence of any commercial or financial relationships that could be construed as a potential conflict of interest.

Publisher's note

All claims expressed in this article are solely those of the authors and do not necessarily represent those of their affiliated organizations, or those of the publisher, the editors and the reviewers. Any product that may be evaluated in this article, or claim that may be made by its manufacturer, is not guaranteed or endorsed by the publisher.

Supplementary material

The Supplementary Material for this article can be found online at: <https://www.frontiersin.org/articles/10.3389/fanim.2022.919515/full#supplementary-material>

References

- Albino, R. L., Marcondes, M. I., Akers, R. M., Detmann, E., Carvalho, B. C., and Silva, T. E. (2015). Mammary gland development of dairy heifers fed diets containing increasing levels of metabolizable protein: metabolizable energy. *J. Dairy Res.* 82, 113–120. doi: 10.1017/S0022029914000697
- AOAC (2005). *Official methods of analysis. 18th ed.* Ed. W. Horwitz (Gaithersburg, MD: AOAC International).
- ASBIA (2019) *Index ASBIA mercado*. Available at: <https://www.lancerural.com.br/vendas-de-semen-ovino-crescem-no-1o-semester-de-2018/presidente-da-asbia-sergio-saud-anuncia-aumento-nas-vendas-de-semen/>.
- Blaxter, K. L., and Clapperton, J. L. (1965). Prediction of the amount of methane produced by ruminants. *Br. J. Nutr.* 19, 511–522.
- Brouwer, E. (1965). *Report of the sub-committee on constants and factors* Vol. 3 (Troon, Scotland: EAAP Publisher), Pages 441–443. Proceedings of Energy Metabolism. doi: 10.1017/CBO9780511663161.012
- Carvalho, P. H. A., Borges, ALDCC, Silva, R. R. E., Lage, H. F., Vivenza, P. A. D., Ruas, J. R. M., et al. (2018). Energy metabolism and partition of lactating zebu and crossbred zebu cows in different planes of nutrition. *PLoS One* 13, e0202088. doi: 10.1371/journal.pone.0202088
- Castro, M. M. D., Albino, R. L., Rodrigues, J. P. P., Sguizzato, A. L. L., Santos, M. M. F., Rotta, P. P., et al. (2020). Energy and protein requirements of Holstein × gyr crossbred heifers. *Animal* 14, 1857–1866. doi: 10.1017/S175173120000622
- Chizzotti, M. L., de Filho, S. C. V., Valadares, R. F. D., Chizzotti, F. H. M., and Tedeschi, L. O. (2008). Determination of creatinine excretion and evaluation of spot urine sampling in Holstein cattle. *Livest. Sci.* 113, 218–225. doi: 10.1016/j.livsci.2007.03.013
- Daniels, K. M., McGilliard, M. L., Meyer, M. J., Van Amburgh, M. E., Capuco, A. V., and Akers, R. M. (2009). Effects of body weight and nutrition on histological mammary development in Holstein heifers. *J. Dairy Sci.* 92, 499–505. doi: 10.3168/jds.2008-1007
- Ferrell, C. L., and Jenkins, T. G. (1998). Body composition and energy utilization by steers of diverse genotypes fed a high-concentrate diet during the finishing period: II. Angus, boran, Brahman, Hereford, and tuli sires. *J. Anim. Sci.* 76, 647. doi: 10.2527/1998.762647x
- Garrett, W. N. (1980). “Energy utilization by growing cattle as determined in 72 comparative slaughter experiments,” In: *Proc 8th Symposium of Energy Metabolism* (London, UK: University of Cambridge, Cambridge, UK), pp. 3–7.
- Hoffman, P. C., Brehm, N. M., Price, S. G., and Prill-Adams, A. (1996). Effect of accelerated postpubertal growth and early calving on lactation performance of primiparous Holstein heifers. *J. Dairy Sci.* 79, 2024–2031. doi: 10.3168/jds.S0022-0302(96)76575-X
- INRA (2018). *INRA feeding system for ruminants* (The Netherlands: Wageningen Academic Publishers).
- Knapp, J. R., Laur, G. L., Vadas, P. A., Weiss, W. P., and Tricarico, J. M. (2014). Invited review: Enteric methane in dairy cattle production: Quantifying the opportunities and impact of reducing emissions. *J. Dairy Sci.* 97, 3231–3261. doi: 10.3168/jds.2013-7234
- Lofgreen, G. P., and Garrett, W. N. (1968). A system for expressing net energy requirements and feed values for growing and finishing beef cattle. *J. Anim. Sci.* 27, 793–806.
- Machado, F. S., Tomich, T. R., Ferreira, A. L., Cavalcanti, L. F. L., Campos, M. M., Paiva, C. A. V., et al. (2016). Technical note: A facility for respiration measurements in cattle. *J. Dairy Sci.* 99, 4899–4906. doi: 10.3168/jds.2015-10298
- Marcondes, M. I. I., and Silva, A. L. (2021). Determination of energy and protein requirements of preweaned dairy calves: A multistudy approach. *J. Dairy Sci.* 104, 11553–11566. doi: 10.3168/jds.2021-20272
- Marcondes, M. I. I., Tedeschi, L. O. O., Valadares Filho, S. C. C., and Gionbelli, M. P. P. (2013). Predicting efficiency of use of metabolizable energy to net energy for gain and maintenance of nellore cattle. *J. Anim. Sci.* 91, 4887–4898. doi: 10.2527/jas.2011-4051
- Moe, P. W., Flatt, W. P., and Tyrrell, H. F. (1972). Net energy value of feeds for lactation. *J. Dairy Sci.* 55, 945–958. doi: 10.3168/jds.S0022-0302(72)85601-7
- Moraes, L. E., Kebreab, E., Strathe, A. B., Dijkstra, J., France, J., Casper, D. P., et al. (2015). Multivariate and univariate analysis of energy balance data from lactating dairy cows. *J. Dairy Sci.* 98, 4012–4029. doi: 10.3168/jds.2014-8995
- Morris, D. L., and Kononoff, P. J. (2021). Derivation of the maintenance energy requirements and efficiency of metabolizable energy utilization for dry and lactating Jersey cows. *J. Dairy Sci.* 104, 9726–9734. doi: 10.3168/jds.2020-20056
- NASEM (National Academies of Sciences, Engineering, and Medicine) (2016). *Nutrient requirements of beef cattle. 8th rev. ed.* (Washington, DC: The National Academic Press).
- NASEM (National Academies of Sciences, Engineering, and Medicine) (2021). *Nutrient requirements of dairy cattle. 8th rev. ed.* (Washington, DC: The National Academic Press).
- NRC (1996). *Nutrient requirements of beef cattle. updated 7t* (Washington, D.C: National Academies Press).
- NRC (2000). *Nutrient requirements of beef cattle. 7th ed.* (Washington, DC: National Academy Press).
- NRC (2001). *Nutrient requirements of dairy cattle. 7th ed.* (Washington, D.C: National Academies Press).
- Oss, D. B., Machado, F. S., Tomich, T. R., Pereira, L. G. R., Campos, M. M., Castro, M. M. D., et al. (2017). Energy and protein requirements of crossbred (Holstein × gyr) growing bulls. *J. Dairy Sci.* 100, 2603–2613. doi: 10.3168/jds.2016-11414
- Rotta, P. P., Valadares Filho, S. C., Detmann, E., Costa e Silva, L. F., Paulino, M. F., Marcondes, M. I., et al. (2014). Digesta sampling sites and marker methods for estimation of ruminal outflow in bulls fed different proportions of corn silage or sugar cane. *J. Anim. Sci.* 92, 2996–3006. doi: 10.2527/jas.2013-7364
- Silva, M. V. G. B., Martins, M. F., Cembranelli, M. A. R., Paiva, L. C., do C. Panetto, J. C., Machado, M. A., et al. (2017). *Programa de melhoramento genético da raça girolando, avaliação genômica de fêmeas jovens* (Juiz de Fora - MG: Embrapa Gado de Leite).
- Silva, F. A. S., Valadares Filho, S. C., Rennó, L. N., Zanetti, D., Costa e Silva, L. F., Godoi, L. A., et al. (2018). Energy and protein requirements for growth of Holstein × gyr heifers. *J. Anim. Physiol. Anim. Nutr. (Berl)* 102, 82–93. doi: 10.1111/jpn.12661
- Silvestre, T., Lima, M. A., dos Santos, G. B., Pereira, L. G. R., Machado, F. S., Tomich, T. R., et al. (2021). Effects of feeding level and breed composition on intake, digestibility, and methane emissions of dairy heifers. *Animals* 11, 586. doi: 10.3390/ani11030586
- Solis, J. C., Byers, F. M., Schelling, G. T., Long, C. R., and Greene, L. W. (1988). Maintenance requirements and energetic efficiency of cows of different breed types. *J. Anim. Sci.* 66, 764. doi: 10.2527/jas1988.663764x
- Subepang, S., Suzuki, T., Phonbumrung, T., and Sommart, K. (2018). Enteric methane emissions, energy partitioning, and energetic efficiency of zebu beef cattle fed total mixed ration silage. *Asian-Australasian J. Anim. Sci.* 32, 548–555. doi: 10.5713/ajas.18.0433
- Verstegen, M. W. A., van der Hel, W., Brandsma, H. A., Henken, A. M., and Bransen, A. M. (1987). “The wageningen respiration unit for animal production research: A description of the equipment and its possibilities,” in *Energy metabolism in farm animals: Effects of housing, stress and disease*. Eds. M. W. A. Verstegen and A. M. Henken (Dordrecht, the Netherlands: MartinusNijhoff Publishers), Pages 21–48.
- Williams, C. B., and Jenkins, T. G. (2003). A dynamic model of metabolizable energy utilization in growing and mature cattle. i. metabolizable energy utilization for maintenance and support metabolism. *J. Anim. Sci.* 81, 1371–1381. doi: 10.2527/2003.8161371x