



OPEN ACCESS

EDITED BY
Enzo Emanuele,
2E Science, Italy

REVIEWED BY
Joshua Bornhorst,
Mayo Clinic, United States
Anna Mammel,
Neurocode, United States

*CORRESPONDENCE
Yijun Song
✉ songyijun@ihcams.ac.cn
Keqiang Yan
✉ tianj-yankeqiang@kingmed.com.cn

†These authors have contributed equally to this work

RECEIVED 03 January 2025
ACCEPTED 18 March 2025
PUBLISHED 26 March 2025

CITATION

Wang S, Liu D, Li H, Jia X, Zhou H, Yu W, Li T, Pan L, Chen B, Wang Y, Zhan N, Song Y and Yan K (2025) Assessing diagnostic performance of plasma biomarkers in Alzheimer's disease versus cognitively unimpaired individuals: P-tau217 emerges as the optimal marker in Chinese cohorts. *Front. Aging Neurosci.* 17:1554805. doi: 10.3389/fnagi.2025.1554805

COPYRIGHT

© 2025 Wang, Liu, Li, Jia, Zhou, Yu, Li, Pan, Chen, Wang, Zhan, Song and Yan. This is an open-access article distributed under the terms of the [Creative Commons Attribution License \(CC BY\)](https://creativecommons.org/licenses/by/4.0/). The use, distribution or reproduction in other forums is permitted, provided the original author(s) and the copyright owner(s) are credited and that the original publication in this journal is cited, in accordance with accepted academic practice. No use, distribution or reproduction is permitted which does not comply with these terms.

Assessing diagnostic performance of plasma biomarkers in Alzheimer's disease versus cognitively unimpaired individuals: P-tau217 emerges as the optimal marker in Chinese cohorts

Shinan Wang^{1,2†}, Dequan Liu^{3,4†}, Haiyan Li^{3,4}, Xiaodong Jia^{3,4}, Hailan Zhou^{3,4}, Wenying Yu^{3,4}, Tong Li^{3,4}, Liping Pan¹, Baorong Chen^{4,5}, Yujia Wang⁶, Nan Zhan¹, Yijun Song^{7,8*} and Keqiang Yan^{3,4*}

¹Tianjin Medical University General Hospital, Tianjin, China, ²Hebei Yanda Hospital Geriatric Medicine Department, Shijiazhuang, Hebei, China, ³Tianjin Kingmed Diagnostics Laboratory Co. Ltd., Tianjin, China, ⁴Tianjin Key Laboratory of Multi-omics Precision Diagnosis Technology for Neurological Diseases, Tianjin, China, ⁵Beijing Kingmed Diagnostics Laboratory Co. Ltd., Beijing, China, ⁶Guangzhou Kingmed Diagnostics Laboratory Co. Ltd., Guangzhou, Guangdong, China, ⁷State Key Laboratory of Experimental Hematology, National Clinical Research Center for Blood Diseases, Haihe Laboratory of Cell Ecosystem, Institute of Hematology and Blood Diseases Hospital, Chinese Academy of Medical Sciences and Peking Union Medical College, Tianjin, China, ⁸Tianjin Institutes of Health Science, Tianjin, China

Introduction: The Simoa platform is recognized as a highly sensitive tool for detecting blood-based biomarkers of Alzheimer's disease (AD). It is extensively utilized in the diagnosis and identification of AD, with accuracy emerging as a pivotal metric for assessing assay performance, gradually gaining acceptance and application. The primary objective of this study was to assess the diagnostic efficacy of multiple biomarkers in AD using the Simoa platform. The ultimate goal was to identify the optimal diagnostic biomarkers and further investigate their practical application value in the Chinese population.

Methods: The study comprised two cohorts: cohort I consisted of 151 healthy controls and 90 AD patients, while cohort II was sourced from a Chinese population cohort, encompassing 123 healthy controls and 126 AD patients, utilizing publicly available data. All patients underwent plasma biomarker concentration measurements using the Simoa platform. The specificity, sensitivity, and accuracy of these biomarkers for AD diagnosis were compared to evaluate their diagnostic efficacy.

Results: The findings revealed that plasma P-tau217 exhibited excellent performance in differentiating AD from healthy controls, with a sensitivity of 95.0%, specificity of 96.0%, and accuracy of 95.7% for AD diagnosis. Conversely, other indicators, including A β 42, A β 42/40, T-tau/A β 42, P-tau217/A β 42 and P-tau181, demonstrated some diagnostic efficacy but fell short of meeting the diagnostic criteria.

Discussion: P-tau217 stands out as a highly effective biomarker for distinguishing AD from CUC, exhibiting extensive clinical application potential in the Chinese population. It presents a promising array of clinical prospects for the Chinese population.

KEYWORDS

Alzheimer's disease, plasma biomarkers, ATN, Simoa, P-tau217

Introduction

Alzheimer's disease (AD) represents the primary cause of dementia, imposing a substantial social and economic burden on global societies (Monica Moore et al., 2021). The acceleration of global population aging has led to a surge in AD prevalence, anticipating to affect over 100 million individuals by 2050. This phenomenon has emerged as a significant global challenge and poses a grave threat to societal structures and healthcare systems (Fakhoury, 2020). As China has officially transitioned into a phase of profound population aging, the incidence of AD has markedly increased, rendering related issues increasingly prominent. The China Alzheimer's Disease Report 2024 indicates that the prevalence and mortality rates of AD and other forms of dementia in China escalate significantly with age, with significant gender differences (Gang et al., 2024). Specifically, the prevalence rate among women stands at 1558.9 per 100,000, with a mortality rate of 47.4 per 100,000, whereas for men, the corresponding rates are 846.3 per 100,000 and 22.5 per 100,000, respectively. These statistics underscore the heightened risk of AD in women and underscore the critical need for targeting this demographic for early screening and intervention strategies. Cognitive impairment, a clinical condition that often receives inadequate attention, is predominantly observed within communities or at the grassroots level. However, only a fraction of these cases are referred to memory clinics or specialized hospitals for comprehensive evaluations and consultations (Drabo et al., 2019).

Recent findings indicate that early intervention in at-risk populations is efficacious in mitigating the risk of developing AD (Livingston et al., 2024). Additionally, the emergence of new therapies emphasizes the need for sensitive and reliable tests to identify patients who may benefit from early intervention (Sims et al., 2023; Van Dyck et al., 2023). Traditional face-to-face neuropsychological assessments typically detect changes only after several years of amyloid and tau pathology accumulation, which may have contributed to the failure of previous clinical trials (Jack et al., 2010). Within the diagnostic paradigm for AD in the laboratory setting, cerebrospinal fluid (CSF) analysis and A β /Tau-PET imaging are regarded as the gold standard (Jack et al., 2018). Amyloid β (A β) and tau proteins in cerebrospinal fluid, quantified through positron emission tomography (PET) imaging, serve as indicators of the core pathology of AD, and these biomarkers are universally acknowledged. However, as the aging population continues to expand, the inadequacy of cognitive centers or memory clinics becomes increasingly apparent when compared to the potentially vast population base in China. According to previous research data, approximately one-quarter of cases may be misdiagnosed when relying solely on symptoms and scores for analysis (Hansson, 2021; Rabinovici et al., 2019; Abbott, 2024). In the United Kingdom, only approximately 65% of patients with dementia receive a definitive diagnosis, and merely 2% undergo CSF measurements or brain scans for molecular diagnosis. This is due to the frequent lack of capacity in memory clinics to perform such tests (Abbott, 2024). Additionally, CSF analysis and A β /Tau-PET imaging are frequently invasive, costly, and in certain instances, difficult to procure, leading to a misdiagnosis of symptomatic Alzheimer's disease

in 25 to 35% of patients managed in some cognitive impairment clinics (Hansson, 2021; Rabinovici et al., 2019). Consequently, the scarcity of user-friendly biomarker assays for Alzheimer's disease poses a significant impediment to the initiation and effective deployment of anti-amyloid immunotherapy for the treatment of patients with Alzheimer's disease (Schindler and Atri, 2023).

In recent years, an escalating body of evidence has indicated that blood-based biomarkers exhibit considerable promise for screening, early diagnosis, monitoring disease progression, and evaluating treatment efficacy in AD (Doecke et al., 2020; Stockmann et al., 2020; Janelidze et al., 2020a; Cicognola et al., 2021). Despite the difficulties associated with the development of blood biomarkers, which are present in significantly lower concentrations in the blood compared to CSF, advancements in highly sensitive detection techniques, such as antibodies and mass spectrometry, have enabled the creation of accurate and reliable blood tests. Notably, the implementation of ultrasensitive assays, such as the Simoa platform, has emerged as a viable alternative to cerebrospinal fluid testing for diagnostic purposes (Xiaochun et al., 2023). Among the various available platforms, the Simoa platform stands out as the clinically preferred option due to its exceptional stability and performance. According to the updated guidelines from the International Conference on Alzheimer's Disease in 2023, all biomarkers must meet stringent accuracy requirements when assessing their clinical diagnostic utility (Jack et al., 2024). However, comparative studies examining the diagnostic efficacy of multiple biomarkers in AD, particularly those based on the Simoa platform, remain scant in the Chinese population. This has led to a lack of a solid basis for clinical selection, resulting in increased patient burden due to repeated testing. Therefore, there is an urgent need for in-depth studies to address this gap. Our study aims to provide ideal biomarker options for clinical application, thereby alleviating the economic burden on patients and facilitating the distinction between AD and CUC.

Methods

Study design and participants

This study conducted a comprehensive analysis of data from two cohorts. Cohort I consisted of patients recruited from the Memory Clinic at Tianjin Medical University General Hospital, encompassing 90 cases of AD, with MMSE scores ranging from 5 to 30. These patients, aged between 42 and 85, were diagnosed by professional physicians using specific IWG-2criteria. Clinical information including age, sex, MMSE scores were collected. While eGFR and MRI data were not available due to study design constraints. Patients with chronic kidney disease (CKD) were excluded due to potential confounding effects on plasma biomarker levels. Mild cognitive impairment (MCI) patients were not included, as the study focused on AD and control groups. Additionally, this study enrolled 151 cognitively unimpaired (CUC) healthy individuals from a clinical laboratory center in the Northern China, Hainan General Hospital in the Southeast China,

and the Affiliated Hospital of Guizhou Medical University in the Southwest China. These participants exhibited no subjective symptoms of cognitive decline, demonstrated normal neurological and neuropsychological examination results, had MMSE scores greater than 26, CDR scores of 0, and ranged in age from 21 to 85 years. Exclusion criteria for both the patients and CUC healthy individuals encompassed active substance abuse, alcoholism, recent head trauma, major recent surgeries, tumors, multiple sclerosis, hydrocephalus, schizophrenia, thyroid dysfunction, vitamin B12 deficiency, abnormal renal function, syphilis or HIV infection, severe depression, or visual/hearing impairments. Moreover, patients receiving disease-modifying treatments or involved in clinical trials were excluded. The study received approval from the Medical Research Ethics Committee of the General Hospital of Tianjin Medical University (Ethics Number: IRB2023-YX-214-01). All participants provided written informed consent at recruitment. The data pertaining to cohort II originated from a study on AD within the Chinese population, undertaken by Xuanwu Hospital (Cai et al., 2023). Utilizing the Simoa platform, the research aimed to detect levels of A β 40, A β 42, Tau, and P-tau181 in the plasma of 123 healthy controls and 126 individuals diagnosed with AD.

Plasma A β 40, A β 42, P-tau217 and tau measurement

Sample collection involved using an EDTA anticoagulant tube to obtain 5 mL of peripheral venous blood from the subjects. The collected blood was centrifuged at 3000 r/min for 5 min in a high-speed centrifuge, and the plasma was separated and stored at -80°C for further analysis. Plasma A β 42, A β 40, A β 42/40, T-tau, and P-tau217 levels were measured using the Simoa enzyme-linked immunoassay HD-X platform from Quanterix (Billerica, MA) following the manufacturer's protocol. This technology is a bead-based experimental approach that is 1,000 times more sensitive than the traditional enzyme-linked immunosorbent assay (ELISA). For cohort I, P-tau217 was detected by means an ALZpath Simoa P-tau217 v2 EQC Kit (Quanterix, 104,372), and A β 42, A β 40 and T-tau levels were measured by means of the Neurology 3-Plex Assay A Kit (Quanterix, 503,203). For cohort II, A β 40, A β 42, T-tau, and P-tau181 were analyzed using similar Simoa assays. All procedures were conducted in strict accordance with the manufacturer's instructions. The range of indicator detection and reagent information can be found in the [Supplementary Table 1](#).

Statistical analysis

Normally distributed measurement data were presented as mean \pm standard deviation and subjected to *t*-tests, while non-normally distributed measurement data were described using median and interquartile range and assessed through nonparametric tests: Kruskal-Wallis or Wilcoxon tests. Sensitivity and specificity analysis of discrimination was expressed by receiver operating characteristic (ROC) curve and area under the curve (AUC). Boxplots and points were used to present the distributions of original values of plasma biomarkers. All data were analyzed using R software.

Results

A differential analysis of each indicator across various groups

The demographic and clinical features of all participants within cohort I and cohort II are presented in [Table 1](#). According to the results of Cohort I, significant disparities were observed in the concentrations of P-tau217, A β 42, A β 40, A β 42/A β 40 ratio, Tau, Tau/A β 42 ratio, and P-tau217/A β 42 ratio between the AD group and the control group ($p < 0.05$, [Table 2](#)). These findings align with existing research on the use of biomarkers in disease diagnosis. Specifically, the AD group exhibited notably higher concentrations of P-tau217, A β 40, Tau, Tau/A β 42 ratio, and P-tau217/A β 42 ratio compared to the control group. Among them, P-tau217 showed a 6-fold increase in AD vs. CUC (1.5 vs. 0.24 pg./mL, $p < 0.001$), while p-tau217/A β 42 showed a 9-fold increase (0.3 vs. 0.034, $p < 0.001$). In contrast, the control group had higher concentrations of A β 42 and the A β 42/A β 40 ratio ([Figure 1](#)).

Upon examining the biomarkers in Cohort II, similar significant differences were found in the concentrations of P-tau181, A β 42, A β 40, A β 42/A β 40 ratio, Tau/A β 42 ratio, and P-tau181/A β 42 ratio between the AD and control groups ($p < 0.05$, [Table 2](#)). Concentrations of P-tau181 and Tau/A β 42 ratio were significantly elevated in the AD group compared to the control group. As with Cohort I, the control group had higher concentrations of A β 42 and the A β 42/A β 40 ratio. Interestingly, A β 40 was significantly higher in the control group than in the AD group, which contrasts with Cohort I where the AD group had higher levels of this indicator. Tau did not significantly differ between the two groups in Cohort II ($p = 0.72$), whereas in Cohort I, it was significantly higher in the AD group ([Figure 2](#)). The combined analysis of both datasets suggests that biomarkers such as P-tau217, P-tau181, A β 42, A β 42/A β 40 ratio, Tau/A β 42 ratio, P-tau217/A β 42 ratio, and P-tau181/A β 42 ratio display significant differences in AD and hold significant potential for clinical application.

A comparative analysis of the diagnostic efficacy of various indicators in AD

In Cohort I of our study, a detailed comparison was conducted to assess the diagnostic performance of five biomarkers: P-tau217, A β 42, A β 42/A β 40 ratio, Tau/A β 42 ratio and P-tau217/A β 42 ratio, in both AD and control groups. The resultant data are presented in [Table 3](#). Notably, among these five biomarkers, P-tau217 (AUC 0.990) exhibited a sensitivity of 95.0% and a specificity of 96.0% with the cutoff value of 0.551. Furthermore, its diagnostic accuracy was recorded as 95.7%, marking it as the most precise biomarker among those tested, thereby indicating its ability to effectively differentiate AD from normal controls. In Cohort II, P-tau181/A β 42 and A β 42 demonstrated high clinical diagnostic efficacy at cutoff values of 0.256 and 12.612, achieving accuracy of 92.8 and 87.1%, respectively ([Table 4](#)). However, in Cohort I, A β 42 displayed a relatively lower accuracy of 62.6% with the cutoff value of 7.925, failing to distinguish the healthy group from the AD group with satisfactory precision.

TABLE 1 Demographics and biomarker concentrations of all participants.

Characteristic	Cohort I AD (n = 90)	Cohort I CUC (n = 151)	Cohort II AD (n = 126)	Cohort II CUC (n = 123)
Age, mean (SD), year	66.1 (8.0)	49.7 (17.0)	69.0 (6.3)	70.0 (7.1)
Gender, F/M	62/28	88/63	63/63	62/61
eGFR	NA	NA	NA	NA
MRI	NA	NA	NA	NA
MMSE score, mean (SD)	19.1 (6.2)	30.0 (2.4)	20.7 (2.8)	29.0 (0.5)
Plasma biomarkers, mean (SD), pg./mL				
A β 40	221.0 (62.9)	194.9 (44.6)	184.4 (63.3)	204.3 (65.1)
A β 42	6.6 (2.5)	8.0 (2.0)	9.6 (2.6)	15.3 (3.3)
A β 42/40	0.03 (0.01)	0.04 (0.01)	0.1 (0.0)	0.1 (0.0)
T-tau	3.6 (1.6)	3.1 (1.2)	2.2 (0.7)	2.2 (0.7)
Tau/A β 42	0.7 (0.7)	0.4 (0.2)	0.2 (0.1)	0.1 (0.1)
P-tau217	1.5 (0.7)	0.2 (0.1)	NA	NA
P-tau217/A β 42	0.3 (0.3)	0.03 (0.03)	NA	NA
P-tau181	NA	NA	4.0 (1.4)	2.0 (0.8)
P-tau181/A β 42	NA	NA	0.4 (0.2)	0.1 (0.1)
CSF biomarkers, mean (SD), pg./mL				
A β 42	NA	NA	382.6 (72.7)	713.2 (135.1)
T-tau	NA	NA	631.0 (179.0)	327.1 (96.0)
P-tau181	NA	NA	123.2 (49.2)	52.5 (25.5)

TABLE 2 Differences of indicators between two groups for cohort I and cohort II.

		Mean_AD	Mean_CUC	FC	p-value
Cohort I	P-tau217	1.500	0.243	6.173	<0.001
	A β 40	220.993	194.925	1.134	<0.001
	A β 42	6.555	7.961	0.823	0.003
	A β 42/40	0.031	0.041	0.756	<0.001
	T-tau	3.627	3.066	1.183	0.015
	Tau/A β 42	0.695	0.417	1.667	<0.001
	P-tau217/A β 42	0.304	0.034	8.941	<0.001
Cohort II	P-tau181	3.970	2.038	1.948	<0.001
	A β 40	184.417	204.284	0.903	<0.001
	A β 42	9.593	15.335	0.626	0.009
	A β 42/40	0.057	0.083	0.687	<0.001
	T-tau	2.188	2.154	1.016	0.720
	Tau/A β 42	0.248	0.148	1.676	<0.001
	P-tau181/A β 42	0.440	0.139	3.165	<0.001

This discrepancy may be attributed to the age difference in the control group between the two cohorts (Cohort I: 50 years old, Cohort II: 70 years old). This variation in age among the control groups across cohorts could have potentially influenced the performance of A β 42, highlighting the significance of considering age as a confounding factor when evaluating biomarkers. Furthermore, the diagnostic efficacy of each biomarker was evaluated through the computation of the area under the ROC curve

(Figure 3). Among all the biomarkers examined, P-tau217 exhibited the highest AUC value (AUC = 0.99), which indicates that this marker holds significant potential in terms of its clinical diagnostic utility. By integrating the data obtained from both Cohort I and Cohort II, it becomes apparent that P-tau217 possesses the highest degree of clinical diagnostic accuracy and emerges as a pivotal biomarker for differentiating between AD and CUC within the Chinese population.

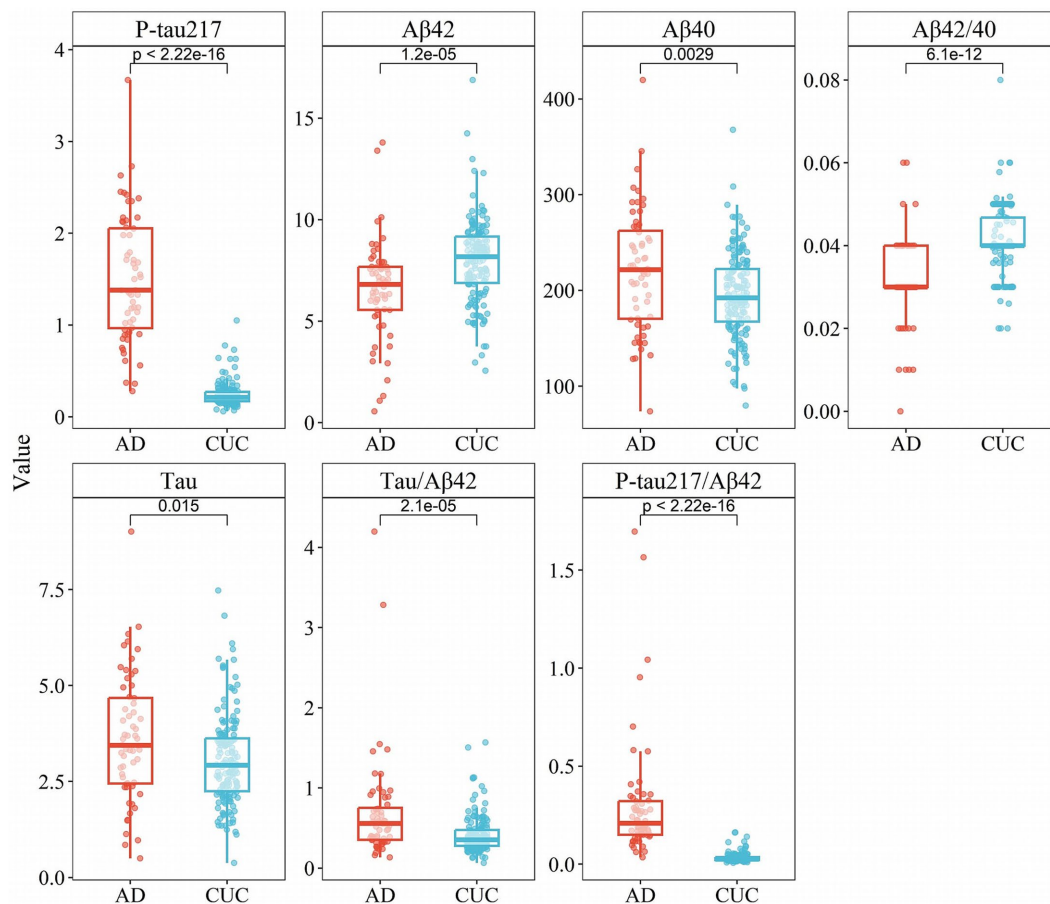


FIGURE 1
Box plots of concentration distribution of each indicator in different subgroups of cohort I.

Discussion

In this study, we demonstrated that P-tau181, P-tau217, P-tau181/Aβ42 ratio and P-tau217/Aβ42 ratio all exhibited exceptional performance on the Simoa platform, with statistically significant differences compared to the control group. From an accuracy perspective, P-tau217 was even more advantageous, achieving a concordance with Aβ-PET of up to 95.7% in a multicentre sample from China. It demonstrated outstanding diagnostic performance, and its diagnostic accuracy may surpass that of some approved CSF biomarkers, such as the Tau/Aβ42 ratio (90%) and the Aβ42/Aβ40 ratio (87%), which is comparable to some foreign cohorts (Barthélemy et al., 2024). In the present study, while some other indicators were significantly different in the two cohorts, they did not exhibit better diagnostic accuracy than P-tau217 (Jack et al., 2024).

Despite the prevalent perception among cognitive experts and clinicians that CSF testing constitutes the gold standard for diagnosis and serves as an alternative to Aβ-PET, this viewpoint has been consistently controversial, as documented in the literature (Kozlov, 2024). Such controversy may stem from physicians' inherent caution and the obstacles impeding the dissemination of knowledge (Hansson et al., 2022). However, recent authoritative publications this year have begun to exhibit a gradual shift in this perspective (Abbott, 2024; Jack et al., 2024). Some experts oppose the incorporation of novel

blood-based biological indicators in the diagnostic criteria for AD, citing concerns that they may result in misdiagnosis among asymptomatic individuals. Coupled with the current absence of efficacious interventions for asymptomatic individuals with positive markers, this situation may exacerbate unnecessary anxiety and psychological strain. Consequently, a solitary positive biomarker should not be deemed sufficient for a definitive diagnosis of AD (Kozlov, 2024). Nevertheless, this contention does not impede the pursuit of identifying a more appropriate biomarker, given that similar manifestations are observable in both CSF and Aβ-PET. These similarities may be attributed to an individual's reserve capacity, potentially leading to the gradual emergence of clinical manifestations of AD at an advanced age, due to various factors (Abbott, 2024; Jack et al., 2024). Moreover, the significance of this concern diminishes in the midst of the profound aging trend prevalent in the country (Gang et al., 2024). It is also evident that Aβ-PET is limited to detecting neuropathological changes in the middle and late stages of AD (Jack et al., 2024), and its limited accessibility hinders early diagnosis and treatment of the disease. Several studies have corroborated the effectiveness of plasma P-tau217 in identifying AD, demonstrating superior diagnostic performance compared to CSF markers. This makes blood-based biomarkers a viable candidate for replacing CSF. Furthermore, in China, individuals who test positive for blood markers but exhibit no overt symptoms are classified as high-risk,

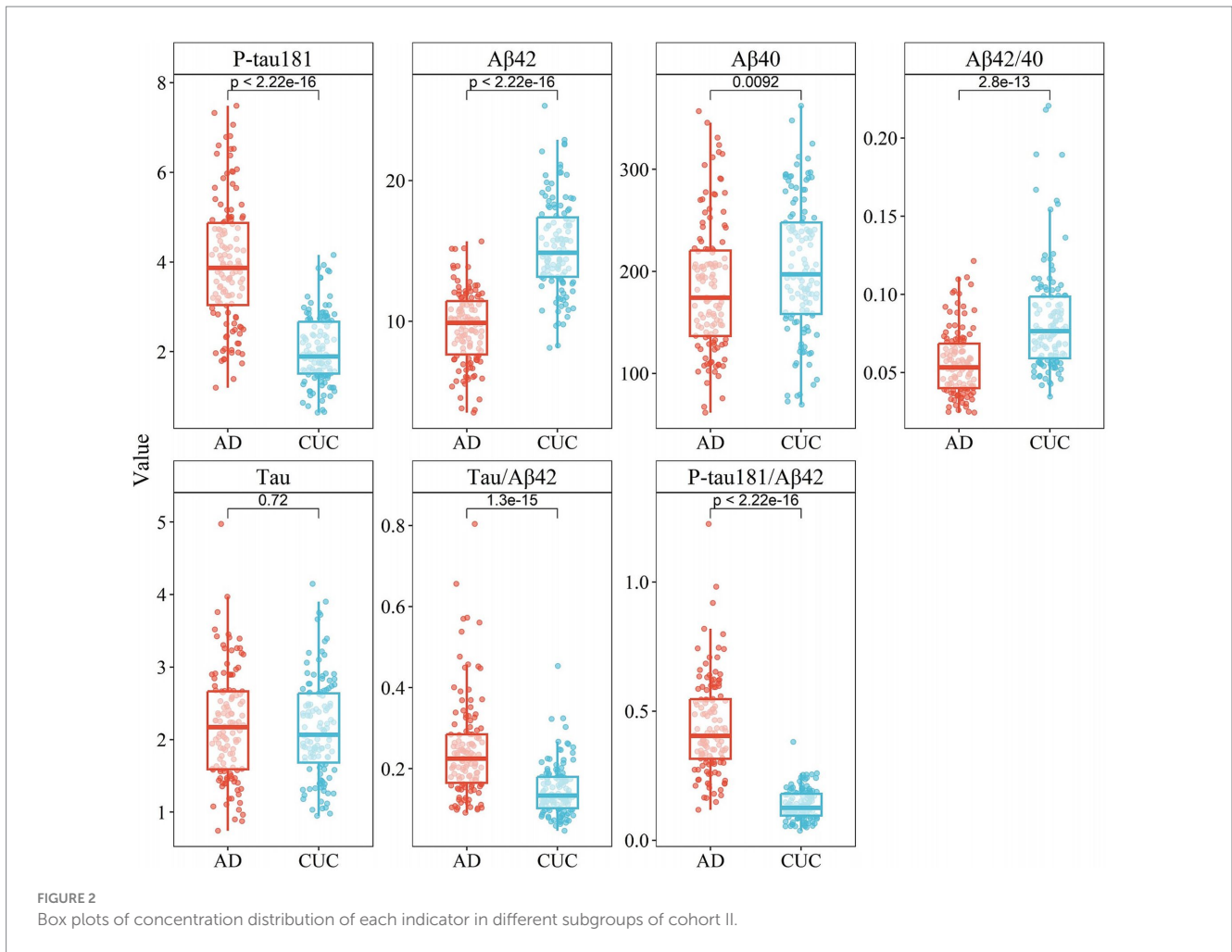


TABLE 3 Diagnostic performance of each indicator at cutoff values in cohort I.

	P-tau217	Aβ42	Aβ42/40	T-tau/Aβ42	P-tau217/Aβ42
Cutoff	0.551	7.925	0.030	0.472	0.060
Accuracy	95.70%	62.60%	82.00%	70.60%	94.60%
Sensitivity	95.00%	81.70%	71.70%	60.00%	98.30%
Specificity	96.00%	55.00%	86.10%	74.80%	92.70%
AUC	0.990	0.693	0.793	0.688	0.988

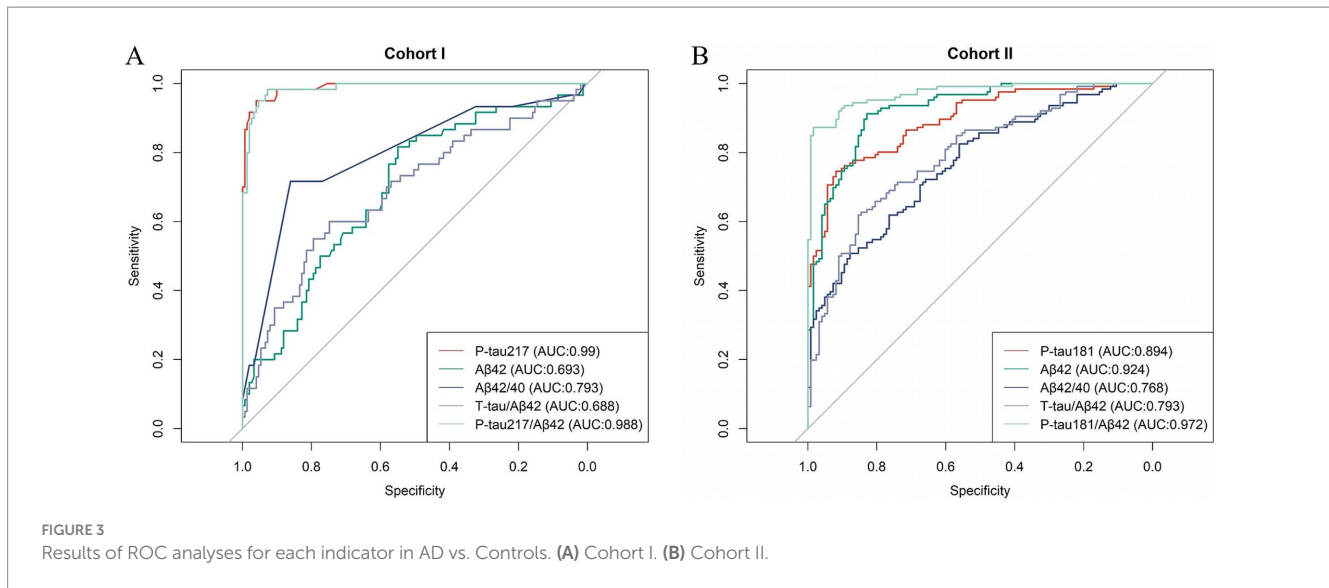
TABLE 4 Diagnostic performance of each indicator at cutoff values in cohort II.

	P-tau181	Aβ42	Aβ42/40	T-tau/Aβ42	P-tau181/Aβ42
Cutoff	3.054	12.612	0.072	0.202	0.256
Accuracy	83.10%	87.10%	69.50%	73.50%	92.80%
Sensitivity	74.60%	91.30%	82.50%	61.90%	87.30%
Specificity	91.90%	82.90%	56.10%	85.40%	98.40%
AUC	0.894	0.924	0.768	0.793	0.972

according to the Chinese consensus on cognitive management. This group should undergo interventions ranging from lifestyle modifications to risk factor management (Yi et al., 2023), which can substantially mitigate the risk of progressing to AD (Livingston et al.,

2024). This approach aligns with the notion of continuous disease management through early prevention and timely treatment.

Cost-effective blood biomarkers play a key role in AD clinical trials by simplifying participant recruitment, accelerating the study



process, and ensuring the accuracy of diagnostic results (Jack et al., 2024). In addition, these biomarkers help clinicians accurately screen beneficiary patients, effectively monitor treatment effects, and adjust or initiate new treatment regimens when appropriate. The dissemination of this approach will have a profound impact on the early diagnosis and individualised treatment of AD, providing patients with a better prognosis and quality of life.

In the field of AD research, several hematological biomarkers have demonstrated clear correlations, encompassing blood levels of Aβ42, Aβ40, and the Aβ42/Aβ40 ratio (Doecke et al., 2020), phosphorylated tau proteins (P-tau181, P-tau217) (Jack et al., 2024; Janelidze et al., 2020a,b; Palmqvist et al., 2020), as well as plasma concentrations of glial fibrillary acidic protein (GFAP) (Chatterjee et al., 2021) and neurofilament light chain (NFL) (Benedet et al., 2019). These biomarkers exhibit strong correlations with both cerebrospinal fluid biomarkers and PET results. Specifically, Aβ42, Aβ42/Aβ40, P-tau181, and P-tau217 are recognized as the core biological markers for AD diagnosis, effectively distinguishing the normal population from AD patients. Conversely, due to their lack of specificity, GFAP and NFL are not considered effective differential diagnostic biomarkers (Jack et al., 2024; Wang et al., 2024). Tau proteins play a crucial role in stabilizing neurons within the cell and assisting in the formation of the microtubule skeleton. As AD progresses, tau proteins become more soluble and detach from microtubules, forming more viscous aggregates that exert dual toxicity on neurons. Notably, alterations in tau protein phosphorylation enhance their solubility, and these site-specific phosphorylated tau variants have emerged as the most valuable biomarkers (Abbott, 2024). For instance, in the Swedish BioFINDER-2 cohort, an analysis of over 1,400 stored plasma samples revealed that P-tau217 had nearly 100% accuracy in predicting the presence of AD pathology in participants' brains. This finding was subsequently validated in an independent cohort study published in July 2020 (Janelidze et al., 2020a,b). These results, in conjunction with our data, suggest that a single biological marker may suffice for distinguishing AD from CUC, potentially revolutionizing the traditional approach to clinical diagnosis, which relies on cognitive symptoms and the ATN framework. This

paradigm shift offers novel perspectives for the early diagnosis of AD and may facilitate earlier interventions and treatment strategies.

There is a prevailing trend in the current scientific community to employ accuracy as the paramount criterion for evaluating the performance of biomarkers. This approach facilitates a more refined categorization of all pertinent biomarkers and aids in making more precise comparisons of their performance. Notably, comparisons of accuracy in Chinese cohorts have yet to be reported. In this study, we evaluated the diagnostic accuracy of key plasma biomarkers using the Simoa platform to differentiate AD from CUC within a Chinese population. Our analysis was conducted across two independent, well-characterized cohorts, providing cross-validated evidence for biomarker performance. Our findings revealed that plasma Aβ42, P-tau181, and P-tau217 exhibited favorable sensitivity and specificity in plasma assays among both AD patients and healthy controls, based on data derived from these two cohorts. When considered as individual indicators, only P-tau217 achieved an accuracy exceeding 90%, thereby qualifying as a standalone indicator for differentiating AD and CUC. This observation aligns with the latest international consensus. Furthermore, ratio aspects evaluated in Aβ42/Aβ40, P-tau217/Aβ42, P-tau181/Aβ42 and T-tau/Aβ42 demonstrated varied sensitivities and specificities. Noteworthy, P-tau217 and P-tau217/Aβ42 exhibited similar performance for distinguishing AD and CUC, which were consistent with study of Olvera-Rojas et al. (2025). These discoveries suggest that these metrics hold potential as diagnostic biomarkers within the Chinese population. Additionally, several other biological markers, such as P-tau181, possess the capability to discern AD patients from controls with high precision and can be utilized as core markers to aid in diagnosis. Overall, our study provides novel insights by assessing P-tau217 in an independent Chinese cohort, a population underrepresented in prior research. The superior performance of P-tau217 alone (AUC 0.990) and its ratio with Aβ42 (AUC 0.988) offers new evidence for its clinical utility in diverse settings. However, it is acknowledged that the accuracy of these markers, while promising, still requires further enhancement.

We compared the relative performance and AUC cutoffs of biomarkers in our study with those in the existing literature, with details showed in Table 5. Our P-tau217 cut-off (0.551 pg/mL, AUC

TABLE 5 Comparative study of biomarkers.

Research cohort	Sample source	Detection method	Marker	Cut-off	AUC
Cohort I (This study)	General Hospital of Tianjin Medical University, China	Simoa	P-tau217	0.551 pg./mL	0.990
			P-tau217/A β 42	0.060	0.988
Cohort II (This study)	China COAST and CFAN, China	Simoa	P-tau181	3.054 pg./mL	0.894
			P-tau181/A β 42	0.256	0.972
Thijssen et al. (2021)	UCSF, USA	Simoa	P-tau217	0.310 pg./mL	0.980
			P-tau181	1.450 pg./mL	0.970
Figdore et al. (2024)	MCSA and ADRC, USA	Simoa	P-tau217	0.475 pg./mL	0.910
Pilotto et al. (2025)	Brescia University Hospital, Italy	Simoa	P-tau217	0.542 pg./mL	0.937
Baiardi et al. (2022)	Institute of Neurological Science of Bologna, Italy	Simoa	P-tau181	1.570 pg./mL	0.716
Olvera-Rojas et al. (2025)	USA (multi-center)	Simoa	P-tau217	0.460 pg./mL	0.890
			P-tau217/A β 42	1.200	0.910

0.990) aligns closely with Thijssen et al. (2021) (0.31 pg./mL, AUC 0.98, USA cohort), Figdore et al. (2024) (0.475 pg./mL, AUC 0.91, USA cohort) and Pilotto et al. (2025) (0.542 pg./mL, AUC 0.937, Italy cohort). For P-tau181, our cut-off (3.054 pg./mL, AUC 0.894) varies from Thijssen et al. (2021) (1.45 pg./mL, AUC 0.97, USA cohort) and Baiardi et al. (2022) (1.57 pg./mL, AUC 0.716, Italy cohort). For P-tau217/A β 42, our cutoff (0.06, AUC 0.998) also differs from Olvera-Rojas et al. (2025) (1.2, AUC 0.91, USA cohort). These discrepancies suggest that factors beyond race—such as assay methods, cohort characteristics, or geographic variation—may influence cut-offs. Moreover, differences in population inclusion criteria may also affect the cutoff values and AUCs of these biomarkers. For example, Figdore et al. (2024) included MCI patients in their PET A β -positive group, whereas our study focused exclusively on CUC and AD patients. This distinction may partly explain why Figdore et al. (2024) reported a P-tau217 cutoff of 0.475 pg./mL (AUC 0.91) compared to our 0.551 pg./mL (AUC 0.990). Larger multi-ethnic studies are needed to elucidate the impact of these factors on biomarker cutoffs.

For the first time, we conducted an assessment of the accuracy of a single indicator in AD within a Chinese population cohort for evaluative purposes. This approach represents a shift from the previously utilized crude methodology, which assessed indicators based on sensitivity, specificity, or their correlation. Such a shift allows for a valid comparison of the performance of various indicators. The accuracy of these indicators can more effectively highlight their diagnostic value, with a reduced risk of false positives and false negatives. Consequently, they are more likely to meet clinical diagnostic needs, rendering them more suitable for application in primary care centers and large-scale clinical trial screenings. This methodological advancement mitigates the previous overreliance on clinical core indications and composite scales, thereby facilitating earlier identification of AD within the population and enabling systematic management of patients.

Furthermore, our investigation revealed substantial variations in the levels of A β 42 and the A β 42/A β 40 ratio between the two cohorts within the normal population, whereas no such differences were observed in the AD group. A rigorous analysis of our data indicated significant disparities in the age of the normal populations included in our study. Specifically, cohort I comprised a younger demographic, whereas cohort II consisted

of an older demographic. This age difference may underpin the notable disparities in A β 42 levels and ratios observed between the two cohorts. Intriguingly, another cohort from China reported similar findings in comparable age groups (Wu et al., 2021). All three studies employed the Simoa platform assay as their methodological foundation. Comparative analyses of these biomarkers in AD populations with minimal age variation exhibited comparable performance, further corroborating that the observed significant differences are unlikely attributable to variations in reagents or sample preprocessing procedures. Moreover, Cohort I demonstrated age disparities between AD (Mean: 66.1 years) and CUC (Mean: 49.7 years), which may have influenced plasma biomarker levels and consequently impacted group differences, especially for T-tau and A β 42 that have been showed modest yet significant correlations with age in healthy subjects (Lue et al., 2019; Zecca et al., 2021). Augmenting the sample size will enhance the representativeness of the evaluations conducted on these biological metrics, particularly in the context of their core utility rather than for diagnostic purposes.

Despite our efforts to combine diverse populations to augment the sample size and mitigate the impact of age on the data, it is noteworthy that the diagnostic criteria employed across the samples were not consistent. Specifically, Cohort I utilized A β -PET positivity and clinical compliance as the diagnostic criteria, whereas Cohort II relied on cerebrospinal fluid positivity. Additionally, it is plausible that factors beyond clinical asymptomaticity may have played a role in introducing a degree of variability among the patients. In the case of the normal control group, we adopted an imaging-based approach to exclude the possibility of vascular disease or other organic pathologies, thereby minimizing the presence of potential risk factors, such as traumatic brain injury and asymptomatic small-vessel disease, which could elevate the risk of AD. Notably, The exclusion of MCI patients limits the generalizability of our findings to this population. Future studies will include MCI cohorts to assess the assay's utility in distinguishing AD from MCI, a common clinical application. Additionally, APOE genotype data were unavailable, a limitation we aim to address in future studies to explore its influence on biomarker performance. It is anticipated that future meta-analyses or prospective studies with larger sample sizes will provide a more comprehensive assessment of the clinical diagnostic performance of these biological indicators.

Data availability statement

The raw data supporting the conclusions of this article will be made available by the authors, without undue reservation.

Ethics statement

The studies involving humans were approved by Tianjin Medical University General Hospital (Ethical NO. IRB2023-YX-214-01). The studies were conducted in accordance with the local legislation and institutional requirements. The participants provided their written informed consent to participate in this study.

Author contributions

SW: Writing – original draft, Data curation. DL: Writing – original draft, Methodology. HL: Software, Data curation, Writing – original draft. XJ: Data curation, Writing – original draft. HZ: Data curation, Writing – original draft. WY: Supervision, Writing – review & editing. TL: Supervision, Writing – review & editing. LP: Supervision, Writing – review & editing. BC: Methodology, Writing – review & editing. YW: Methodology, Writing – review & editing. NZ: Writing – review & editing, Supervision. YS: Investigation, Writing – review & editing. KY: Conceptualization, Writing – review & editing.

Funding

The author(s) declare that financial support was received for the research and/or publication of this article. This work was supported by Tianjin Science and Technology Leading Cultivation Enterprise Project (22YDPYSY0020).

References

- Abbott, A. (2024). Blood tests could soon predict your risk of Alzheimer's. *Nature* 632, 243–245. doi: 10.1038/d41586-024-02535-x
- Baiardi, S., Quadalti, C., Mammaia, A., Dellavalle, S., Zenesini, C., Sambati, L., et al. (2022). Diagnostic value of plasma p-tau181, NfL, and GFAP in a clinical setting cohort of prevalent neurodegenerative dementias. *Alzheimers Res. Ther.* 14:153. doi: 10.1186/s13195-022-01093-6
- Barthélemy, N. R., Salvadó, G., Schindler, S. E., He, Y., Janelidze, S., Collij, L. E., et al. (2024). Highly accurate blood test for Alzheimer's disease is similar or superior to clinical cerebrospinal fluid tests. *Nat. Med.* 30, 1085–1095. doi: 10.1038/s41591-024-02869-z
- Benedet, A. L., Ashton, N. J., Pascoal, T. A., Leuzy, A., Mathotaarachchi, S., Kang, M. S., et al. (2019). Plasma neurofilament light associates with Alzheimer's disease metabolic decline in amyloid-positive individuals. *Alzheimer's Dement.* 11, 679–689. doi: 10.1016/j.jad.2019.08.002
- Cai, H., Pang, Y., Fu, X., Ren, Z., and Jia, L. (2023). Plasma biomarkers predict Alzheimer's disease before clinical onset in Chinese cohorts. *Nat. Commun.* 14:6747. doi: 10.1038/s41467-023-42596-6
- Chatterjee, P., Pedrini, S., Stoops, E., Goozee, K., Villemagne, V. L., Asih, P. R., et al. (2021). Plasma glial fibrillary acidic protein is elevated in cognitively normal older adults at risk of Alzheimer's disease. *Transl. Psychiatry* 11:27. doi: 10.1038/s41398-020-01137-1
- Cicognola, C., Janelidze, S., Hertze, J., Zetterberg, H., Blennow, K., Mattsson-Carlgen, N., et al. (2021). Plasma glial fibrillary acidic protein detects Alzheimer pathology and predicts future conversion to Alzheimer dementia in patients with mild cognitive impairment. *Alzheimers Res. Ther.* 13, 1–9. doi: 10.1186/s13195-021-00804-9
- Doecke, J. D., Pérez-Grijalba, V., Fandos, N., Fowler, C., Villemagne, V. L., Masters, C. L., et al. (2020). Total A β 42/A β 40 ratio in plasma predicts amyloid-PET status, independent of clinical AD diagnosis. *Neurology* 94, e1580–e1591. doi: 10.1212/WNL.00000000000009240
- Drabo, E. F., Barthold, D., Joyce, G., Ferido, P., Chang Chui, H., and Zissimopoulos, J. (2019). Longitudinal analysis of dementia diagnosis and specialty care among racially diverse Medicare beneficiaries. *Alzheimers Dement.* 15, 1402–1411. doi: 10.1016/j.jalz.2019.07.005
- Fakhoury, M. (2020). Inflammation in Alzheimer's disease. *Curr. Alzheimer Res.* 17, 959–961. doi: 10.2174/156720501711210101110513
- Figdore, D. J., Griswold, M., Bornhorst, J. A., Graff-Radford, J., Ramanan, V. K., Vemuri, P., et al. (2024). Optimizing cutpoints for clinical interpretation of brain amyloid status using plasma p-tau217 immunoassays. *Alzheimers Dement.* 20, 6506–6516. doi: 10.1002/alz.14140
- Gang, W., Jinlei, Q., Xinya, L., Rujing, R., Shaohui, L., Yisong, H., et al. (2024). China Alzheimer Report 2024. *J. Diagn. Concepts Pract.* 23, 219–256. doi: 10.16150/j.1671-2870.2024.03.001
- Hansson, O. (2021). Biomarkers for neurodegenerative diseases. *Nat. Med.* 27, 954–963. doi: 10.1038/s41591-021-01382-x
- Hansson, O., Edelmayer, R. M., Boxer, A. L., Carrillo, M. C., Mielke, M. M., Rabinovici, G. D., et al. (2022). The Alzheimer's Association appropriate use recommendations for blood biomarkers in Alzheimer's disease. *Alzheimers Dement.* 18, 2669–2686. doi: 10.1002/alz.12756
- Jack, C. R. Jr., Andrews, J. S., Beach, T. G., Buracchio, T., Dunn, B., Graf, A., et al. (2024). Revised criteria for diagnosis and staging of Alzheimer's disease: Alzheimer's Association workgroup. *Alzheimers Dement.* 20, 5143–5169. doi: 10.1002/alz.13859

Conflict of interest

DL, HL, XJ, HZ, WY, TL, and KY was employed by Tianjin Kingmed Diagnostics Laboratory Co. Ltd. BC was employed by Beijing Kingmed Diagnostics Laboratory Co. Ltd. YW was employed by GuangZhou Kingmed Diagnostics Laboratory Co. Ltd.

The remaining authors declare that the research was conducted in the absence of any commercial or financial relationships that could be construed as a potential conflict of interest.

The author(s) declared that they were an editorial board member of *Frontiers*, at the time of submission. This had no impact on the peer review process and the final decision.

Generative AI statement

The authors declare that no Gen AI was used in the creation of this manuscript.

Publisher's note

All claims expressed in this article are solely those of the authors and do not necessarily represent those of their affiliated organizations, or those of the publisher, the editors and the reviewers. Any product that may be evaluated in this article, or claim that may be made by its manufacturer, is not guaranteed or endorsed by the publisher.

Supplementary material

The Supplementary material for this article can be found online at: <https://www.frontiersin.org/articles/10.3389/fnagi.2025.1554805/full#supplementary-material>

- Jack, C. R. Jr., Bennett, D. A., Blennow, K., Carrillo, M. C., Dunn, B., Haeberlein, S. B., et al. (2018). NIA-AA research framework: toward a biological definition of Alzheimer's disease. *Alzheimers Dement.* 14, 535–562. doi: 10.1016/j.jalz.2018.02.018
- Jack, C. R., Knopman, D. S., Jagust, W. J., Shaw, L. M., Aisen, P. S., Weiner, M. W., et al. (2010). Hypothetical model of dynamic biomarkers of the Alzheimer's pathological cascade. *Lancet Neurol.* 9, 119–128. doi: 10.1016/S1474-4422(09)70299-6
- Janelidze, S., Mattsson, N., Palmqvist, S., Smith, R., Beach, T. G., Serrano, G. E., et al. (2020a). Plasma P-tau181 in Alzheimer's disease: relationship to other biomarkers, differential diagnosis, neuropathology and longitudinal progression to Alzheimer's dementia. *Nat. Med.* 26, 379–386. doi: 10.1038/s41591-020-0755-1
- Janelidze, S., Stomrud, E., Smith, R., Palmqvist, S., Mattsson, N., Airey, D. C., et al. (2020b). Cerebrospinal fluid P-tau217 performs better than P-tau181 as a biomarker of Alzheimer's disease. *Nat. Commun.* 11:1683. doi: 10.1038/s41467-020-15436-0
- Kozlov, M. (2024). Should Alzheimer's be diagnosed with a blood test? Proposal sparks controversy. *Nature* 635, 530–531. doi: 10.1038/d41586-024-03629-2
- Livingston, G., Huntley, J., Liu, K. Y., Costafreda, S. G., Selbæk, G., Alladi, S., et al. (2024). Dementia prevention, intervention, and care: 2024 report of the lancet standing commission. *Lancet* 404, 572–628. doi: 10.1016/S0140-6736(24)01296-0
- Lue, L. F., Pai, M. C., Chen, T. F., Hu, C. J., Huang, L. K., Lin, W. C., et al. (2019). Age-dependent relationship between plasma A β 40 and A β 42 and total tau levels in cognitively normal subjects. *Front. Aging Neurosci.* 11:222. doi: 10.3389/fnagi.2019.00222
- Monica Moore, M., Diaz-Santos, M., and Vossel, K. (2021). Alzheimer's association 2021 facts and figures report. *Alzheimer's Assoc.* 17, 327–406. doi: 10.1002/alz.12328
- Olvera-Rojas, M., Sewell, K. R., Karikari, T. K., Huang, H., Oberlin, L. E., Zeng, X., et al. (2025). Influence of medical conditions on the diagnostic accuracy of plasma p-tau217 and p-tau217/A β 42. *Alzheimers Dement.* 21:e14430. doi: 10.1002/alz.14430
- Palmqvist, S., Janelidze, S., Quiroz, Y. T., Zetterberg, H., Lopera, F., Stomrud, E., et al. (2020). Discriminative accuracy of plasma phospho-tau217 for Alzheimer disease vs other neurodegenerative disorders. *JAMA* 324, 772–781. doi: 10.1001/jama.2020.12134
- Pilotto, A., Quaresima, V., Trasciatti, C., Tolassi, C., Bertoli, D., Mordenti, C., et al. (2025). Plasma p-tau217 in Alzheimer's disease: Lumipulse and ALZpath SIMOA head-to-head comparison. *Brain* 148, 408–415. doi: 10.1093/brain/awae368
- Rabinovici, G. D., Gatsonis, C., Apgar, C., Chaudhary, K., Gareen, I., Hanna, L., et al. (2019). Association of amyloid positron emission tomography with subsequent change in clinical management among medicare beneficiaries with mild cognitive impairment or dementia. *JAMA* 321, 1286–1294. doi: 10.1001/jama.2019.2000
- Schindler, S. E., and Atri, A. (2023). The role of cerebrospinal fluid and other biomarker modalities in the Alzheimer's disease diagnostic revolution. *Nat. Aging* 3, 460–462. doi: 10.1038/s43587-023-00400-6
- Sims, J. R., Zimmer, J. A., Evans, C. D., Lu, M., Ardayfio, P., Sparks, J. D., et al. (2023). Donanemab in early symptomatic Alzheimer disease: the TRAILBLAZER-ALZ 2 randomized clinical trial. *JAMA* 330, 512–527. doi: 10.1001/jama.2023.13239
- Stockmann, J., Verberk, I. M. W., Timmesfeld, N., Denz, R., Budde, B., Lange-Leifhelm, J., et al. (2020). Amyloid- β misfolding as a plasma biomarker indicates risk for future clinical Alzheimer's disease in individuals with subjective cognitive decline. *Alzheimers Res. Ther.* 12, 1–13. doi: 10.1186/s13195-020-00738-8
- Thijssen, E. H., la Joie, R., Strom, A., Fonseca, C., Iaccarino, L., Wolf, A., et al. (2021). Plasma phosphorylated tau 217 and phosphorylated tau 181 as biomarkers in Alzheimer's disease and frontotemporal lobar degeneration: a retrospective diagnostic performance study. *Lancet Neurol.* 20, 739–752. doi: 10.1016/S1474-4422(21)00214-3
- Van Dyck, C. H., Swanson, C. J., Aisen, P., Bateman, R. J., Chen, C., Gee, M., et al. (2023). Lecanemab in early Alzheimer's disease. *N. Engl. J. Med.* 388, 9–21. doi: 10.1056/NEJMoa2212948
- Wang, X., Shi, Z., Qiu, Y., Sun, D., and Zhou, H. (2024). Peripheral GFAP and NfL as early biomarkers for dementia: longitudinal insights from the UK biobank. *BMC Med.* 22:192. doi: 10.1186/s12916-024-03418-8
- Wu, X., Xiao, Z., Yi, J., Ding, S., Gu, H., Wu, W., et al. (2021). Development of a plasma biomarker diagnostic model incorporating ultrasensitive digital immunoassay as a screening strategy for Alzheimer disease in a Chinese population. *Clin. Chem.* 67, 1628–1639. doi: 10.1093/clinchem/hvab192
- Xiaochun, C., Jianping, J., and Qihao, G. (2023). Chinese expert consensus on brief screening of prodromal Alzheimer's disease (2023). *Chin. J. Neuromed.* 22, 433–444. doi: 10.3760/cma.j.cn115354-20230330-00191
- Yi, T., and Qiang, Z. (2023). Chinese expert consensus on cognitive health management (2023). *Chin. J. Health Manag.* 17, 881–892. doi: 10.3760/cma.j.cn115624-20230908-00124
- Zecca, C., Pasculli, G., Tortelli, R., Dell'Abate, M. T., Capozzo, R., Barulli, M. R., et al. (2021). The role of age on Beta-Amyloid1-42 plasma levels in healthy subjects. *Front. Aging Neurosci.* 13:698571. doi: 10.3389/fnagi.2021.698571