



## OPEN ACCESS

EDITED BY  
Natalie D. Mylniczenko,  
Walt Disney World, United States

REVIEWED BY  
Alexandra Schoen,  
University of Manitoba, Canada  
Lily Parkinson,  
Chicago Zoological Society, United States

\*CORRESPONDENCE  
Nicholas G. Dannemiller  
✉ ngdannem@ncsu.edu

RECEIVED 06 July 2023  
ACCEPTED 28 November 2023  
PUBLISHED 20 December 2023

CITATION  
Dannemiller NG, Cray C, Westmoreland LS and  
Christiansen EF (2023) Diagnostic agreement  
between three point-of-care glucose and  
 $\beta$ -hydroxybutyrate meters and reference  
laboratory methods in stingrays.  
*Front. Vet. Sci.* 10:1254340.  
doi: 10.3389/fvets.2023.1254340

COPYRIGHT  
© 2023 Dannemiller, Cray, Westmoreland and  
Christiansen. This is an open-access article  
distributed under the terms of the [Creative  
Commons Attribution License \(CC BY\)](#). The  
use, distribution or reproduction in other  
forums is permitted, provided the original  
author(s) and the copyright owner(s) are  
credited and that the original publication in this  
journal is cited, in accordance with accepted  
academic practice. No use, distribution or  
reproduction is permitted which does not  
comply with these terms.

# Diagnostic agreement between three point-of-care glucose and $\beta$ -hydroxybutyrate meters and reference laboratory methods in stingrays

Nicholas G. Dannemiller<sup>1,2\*</sup>, Carolyn Cray<sup>3</sup>,  
Lori S. Westmoreland<sup>1,2</sup> and Emily F. Christiansen<sup>1,2</sup>

<sup>1</sup>Department of Clinical Sciences, College of Veterinary Medicine, North Carolina State University, Raleigh, NC, United States, <sup>2</sup>North Carolina Aquariums, Raleigh, NC, United States, <sup>3</sup>Division of Comparative Pathology, Department of Pathology and Laboratory Medicine, University of Miami Miller School of Medicine, Miami, FL, United States

Point-of-care (POC) glucose and  $\beta$ -hydroxybutyrate ( $\beta$ -HB) meters can potentially provide rapid insight into an elasmobranch's metabolic state in clinical and field research settings. This study evaluated the diagnostic agreement of three commercial POC meters against reference laboratory methods for glucose and  $\beta$ -HB concentrations in stingrays. Blood was collected during anesthetized exams from 28 stingrays representing four species: cownose rays (*Rhinoptera bonasus*), Atlantic stingrays (*Hypanus sabina*), southern stingrays (*Hypanus americanus*), and yellow stingrays (*Urobatis jamaicensis*). Glucose and  $\beta$ -HB concentrations were measured with each POC meter using whole blood and plasma; in parallel, plasma glucose and  $\beta$ -HB concentrations were measured via reference laboratory methods. Agreement between POC meters and reference laboratory methods was assessed using Bland–Altman methods, Passing–Bablok regression, observed total error, percent relative error, and linear mixed effect models. Plasma glucose and  $\beta$ -HB concentrations determined by reference laboratory methods ranged from <20–63mg/dL to 0.05–5.38mmol/L, respectively. One human POC meter—the Precision Xtra—showed the greatest agreement with reference laboratory methods when measuring glucose with whole blood [mean bias and 95% CI: 0 (–3–4) mg/dL] and  $\beta$ -HB with plasma [mean bias and 95% CI: 0.1 (–0.04–0.2) mmol/L]. Stingray sex, weight, buffy coat, and packed cell volume did not significantly affect the agreement between POC meters and reference laboratory methods. Across all three POC meters, mean bias and imprecision for plasma  $\beta$ -HB concentrations were relatively small (0–0.1mmol/L and 0%, respectively). Utilizing POC meters to measure glucose and  $\beta$ -HB in stingrays may be viable when reference methods are unavailable.

## KEYWORDS

batoid, clinical pathology, elasmobranch, ketone, metabolism

## 1 Introduction

Elasmobranchs (sharks, skates, and rays) are an ancient and diverse group of cartilaginous fish that play essential ecologic roles in aquatic ecosystems globally. Over 200 stingray species are grouped in the order Myliobatiformes, suborder Myliobatoidei (1). Most stingrays are demersal and can be found in tropical to subtropical marine or freshwater habitats. Stingray

species are increasingly listed as vulnerable or endangered on the International Union for Conservation of Nature Red List of Threatened Species, an unfortunate trend shared by all elasmobranchs, with almost 1/3 being threatened with extinction (2). Consequently, stingrays are common in public aquariums due to their ecological importance and increasing need for conservation.

One unique physiologic feature of elasmobranchs is their preferential use of ketone bodies—especially  $\beta$ -hydroxybutyrate ( $\beta$ -HB)—rather than fatty acids for aerobic metabolism under normal conditions, predominately in skeletal and cardiac muscle (3–5). Besides providing buoyancy, elasmobranchs' large, lipid-dense livers serve as ketogenic powerhouses (4). Within the liver, acetyl coenzyme A is formed from long-chain fatty acids by mitochondrial  $\beta$ -oxidation and utilized in numerous metabolic reactions, including generating ketone bodies. Ketone bodies are highly water-soluble, energy-rich fuels exported to extra-hepatic tissues without the need for protein-binding (3). Furthermore, ketone bodies likely play a significant role in supporting metabolism during periods of fasting in elasmobranchs (3–6). While the concentration of ketone bodies in fed elasmobranchs is similar to that observed in fasted (0–3 mmol/L) or ketoacidotic (> 3 mmol/L) mammals, marked ketosis has been found during starvation or prolonged fasting (4).

Glucose is potentially of less metabolic importance in elasmobranchs, although differences between tissues, species, and metabolic states exist (3–5, 7, 8). Plasma glucose concentrations are often low relative to teleosts and terrestrial vertebrates and appear relatively unchanged after feeding or during long-term fasting (3). Some elasmobranch species reportedly tolerate wide ranges of plasma glucose concentrations with no observed clinical effects (3). Nevertheless, a stress-induced increase in catecholamines or corticosteroids (e.g.,  $1\alpha$ -hydroxycorticosterone) has been speculated to possibly correlate with increased glucose mobilization, which may reflect increased demand as an oxidative fuel source or supply increased rates of anaerobic glycolysis (3–5, 9, 10). This is best highlighted by the hyperglycemia observed in elasmobranchs as a response to various stressors, including capture, handling, and transport (10–13).

Conventional measurement of glucose and  $\beta$ -HB concentrations in veterinary medicine requires serum or plasma to be submitted to a reference laboratory. As an alternative to laboratory-based assays in human and veterinary medicine, point-of-care (POC) meters typically provide rapid results, require smaller sample volumes, and require no centrifugation or cold chain before testing (14). Within veterinary medicine, the diagnostic accuracy of POC glucose and  $\beta$ -HB meters have been explored in multiple domestic (15–21) and non-domestic species (22–28). Point-of-care glucose and  $\beta$ -HB meters may aid veterinarians, researchers, and wildlife managers working with elasmobranchs, including stingrays, by providing almost instant insight into their physiologic stress or metabolic state.

This study evaluated the diagnostic agreement of three commercial POC glucose and  $\beta$ -HB meters with reference laboratory methods for glucose and  $\beta$ -HB concentrations in stingrays. We hypothesized that the results from the POC meters evaluated would have sufficient agreement with reference laboratory methods and precision for clinical and field research purposes for glucose and  $\beta$ -HB concentrations in stingrays.

## 2 Materials and methods

### 2.1 POC meters and reference laboratory

Glucose and  $\beta$ -HB concentrations determined by three commercially available POC meters were compared to results from reference laboratory methods. Each meter measures glucose or  $\beta$ -HB concentrations independently using corresponding test strips. All three meters measure glucose concentration via a glucose-1-dehydrogenase enzymatic reaction in which glucose is converted to gluconolactone using a coenzyme to convert nicotinamide adenine dinucleotide (NAD<sup>+</sup>) to its reduced form NADH. NADH is re-oxidized to NAD<sup>+</sup> by a redox mediator, which is measured via amperometry (i.e., an electrical current) and is directly proportional to glucose concentration (14). Similarly, all three meters measure  $\beta$ -HB concentration via a  $\beta$ -HB-dehydrogenase enzymatic reaction in which  $\beta$ -HB is converted to acetoacetate, leading to a concurrent equimolar reduction of NAD<sup>+</sup> to NADH. NADH is re-oxidized to NAD<sup>+</sup> by a redox mediator, which is measured via amperometry (i.e., an electrical current) and is directly proportional to  $\beta$ -HB concentration (14). Each meter and its respective test strips were stored and operated following manufacturer instructions; only the correct corresponding test strips provided by the manufacturer were used for each respective meter. Before all data collection, meters were calibrated following manufacturer instructions. None of the meters were operated outside their recommended temperature (10–50°C or 50–122°F) and humidity (10–90%) ranges.

The first POC meter evaluated was the BHBCheck Plus Blood Ketone & Glucose Monitoring System (PortaCheck, Moorestown, NJ, United States), a veterinary-licensed POC meter that requires 0.7  $\mu$ L of whole blood, measures glucose concentrations within 20–600 mg/dL, and  $\beta$ -HB concentrations within 0.1–8.0 mmol/L. The BHBCheck Plus meter is intended for heparinized or non-heparinized bovine venous whole blood with a 20–40% packed cell volume (PCV).

The second POC meter evaluated was the Precision Xtra Blood Glucose & Ketone Monitoring System (Abbott Laboratories, Chicago, IL, United States), a human-licensed POC meter that requires 1.5  $\mu$ L of whole blood, measures glucose concentrations within 20–500 mg/dL, and  $\beta$ -HB concentrations within 0–8.0 mmol/L. The Precision Xtra meter is intended for freshly drawn human capillary whole blood with a 30–60% PCV.

The third POC meter evaluated was the Nova Vet™ Ketone/Glucose Meter (Nova Biomedical, Waltham, MA, United States), a veterinary-licensed POC meter that requires 0.4  $\mu$ L whole blood for glucose and 0.8  $\mu$ L whole blood for  $\beta$ -HB, measures glucose concentrations within 20–600 mg/dL, and  $\beta$ -HB concentrations within 0.1–8.0 mmol/L. The Nova Vet™ meter is intended for heparinized or non-heparinized bovine whole blood with a 25–60% PCV.

Plasma glucose and  $\beta$ -HB concentrations were measured using a VITROS® 5600 analyzer (Ortho Clinical Diagnostics, Rochester, NY, United States) maintained at the reference laboratory (University of Miami, Miami, FL, United States). The analyzer is maintained per manufacturer instructions and quality assurance best practices. Glucose was determined by a colorimetric glucose oxidase assay based on peroxidase-catalyzed oxidative coupling, producing a red-colored quinoneimine dye with color intensity directly

proportional to glucose concentration (Vitro glucose reagent, Ortho Clinical Diagnostics, Rochester, NY, United States).  $\beta$ -HB was determined via a colorimetric  $\beta$ -HB dehydrogenase assay based on the reduction of the tetrazolium salt INT to a red-colored formazan dye with a color intensity directly proportional to  $\beta$ -HB concentration (Stanbio Chemistry Beta-Hydroxybutyrate LiquiColor® Assay, EKF Diagnostics USA, Boerne, TX, United States). All assays were run per manufacturer instructions.

## 2.2 Animals and sampling

Twenty-eight stingrays (15 males, 13 females) under managed care at the North Carolina Aquariums at Fort Fisher, Pine Knoll Shores, and Roanoke Island underwent routine annual preventative health exams and phlebotomy between September 2022 and October 2023. Four species were represented in the sample population: cownose rays (*Rhinoptera bonasus*,  $n=6$ , min-max weight: 3.85–6.8 kg), Atlantic stingrays (*Hypanus sabina*,  $n=10$ , min-max weight: 0.8–1.8 kg), southern stingrays (*Hypanus americanus*,  $n=4$ , min-max weight: 5.4–9.2 kg), and yellow stingrays (*Urobatis jamaicensis*,  $n=8$ , min-max weight: 0.6–1.65 kg). Stingrays were deemed clinically healthy for study inclusion via absence of abnormalities on physical exam (e.g., skin lesions, color changes, coelomic distension, etc.). All animals were fasted for 12–48 h and efficiently captured via a net from a holding or exhibit system in <5 min. Stingrays were anesthetized using 75–100 mg/L MS-222 buffered 1:1 by weight with sodium bicarbonate or marine buffer. After each stingray reached adequate anesthetic depth (approximately 5–10 min), blood was collected from a pectoral fin or mesopterygial vessel as previously described, using heparinized 22-gauge needles and 3 mL syringes (29). Needles and syringes were pre-heparinized before phlebotomy by aspirating a small volume of 1,000 U/mL sodium heparin and forcefully expelling it. Stingray handling and sampling was performed according to procedures approved by North Carolina State University's Institutional Animal Care and Use Committee (IACUC #21–117).

## 2.3 Data collection

Immediately following phlebotomy, heparinized whole blood glucose and  $\beta$ -HB concentrations were measured using all three POC meters in a randomized order. Microhematocrit tubes were filled with heparinized whole blood, sealed with clay, and centrifuged for 5 min at 10,000 g (PowerSpin™ MH Centrifuge, UNICO, Dayton, NJ, United States). PCV and buffy coat (BC) were read using a hematocrit capillary tube reader (Veterinary Information Network®, Inc., Davis, CA, United States); total solids (TS) were determined via a handheld clinical refractometer (Jorgensen Laboratories, LLC, Loveland, CO, United States). The remainder of the heparinized whole blood sample was kept in a smaller cooler on ice until being centrifuged for 5 min at 3,000 g (Mini Centrifuge, Bio-Rad Laboratories, Inc., Hercules, CA, United States) within 1 h of sample collection. Heparinized plasma was separated from packed red blood cells (RBCs) using a disposable pipette, and plasma glucose and  $\beta$ -HB concentrations were measured using all three POC

meters. The remaining plasma was placed in a 2-mL cryovial and shipped overnight to the glucose and  $\beta$ -HB reference laboratory (University of Miami, Miami, FL, United States). To measure POC meter precision (i.e., intra-assay variability or repeatability), heparinized whole blood glucose and  $\beta$ -HB concentrations were measured with each POC meter five times in rapid succession immediately following phlebotomy in a subset of two yellow stingrays. Heparinized plasma glucose and  $\beta$ -HB concentrations were measured with each POC meter five times in rapid succession immediately following centrifugation.

## 2.4 Statistical analyses

For glucose and  $\beta$ -HB concentrations below the lower limit of quantification (LLOQ) of the three POC meters and reference laboratory analyzer, imputation was performed by substituting half of the respective instrument's LLOQ (e.g., if the LLOQ was 20 mg/dL, 10 mg/dL was inputted). To date, there is no widespread consensus on handling data below the LLOQ of an instrument (30). This study used imputation with half the LLOQ because it introduces less bias into the estimates than other single imputation approaches (30, 31). Summary statistics for glucose and  $\beta$ -HB were compiled for the three POC meters and reference laboratory analyzer. Using reference laboratory results, summary statistics of glucose and  $\beta$ -HB concentrations were also compiled by stingray species.

The diagnostic agreement (i.e., accuracy) between the three POC meters and reference laboratory results was assessed by calculating the observed total error ( $TE_{obs}$ ) and percent relative error, as well as using Bland–Altman methods (32) and Passing–Bablok regression (33, 34) for both glucose and  $\beta$ -HB using whole blood and plasma. The precision (i.e., intra-assay variability or repeatability) of the three POC meters for both glucose and  $\beta$ -HB using whole blood and plasma was assessed by calculating the percent coefficient of variation (CV) using five replicates with Equation 1:

$$CV (\%) = \frac{Standard\ Deviation_{POC}}{Mean_{POC}} \times 100 \quad (1)$$

Percent bias and  $TE_{obs}$  of the three POC meters for both glucose and  $\beta$ -HB using whole blood and plasma were calculated with Equations 2 and 3, respectively:

$$Bias (\%) = \left| \frac{Mean_{Reference} - Mean_{POC}}{Mean_{Reference}} \right| \times 100 \quad (2)$$

$$TE_{obs} (\%) = 2 \times CV (\%) + Bias (\%) \quad (3)$$

The percent relative error between each POC meter result and the reference laboratory result was calculated with Equation 4 for glucose and  $\beta$ -HB:

$$Relative\ Error (\%) = \left| \frac{Result_{POC} - Result_{Reference}}{Result_{Reference}} \right| \times 100 \quad (4)$$

The proportions of results with a percent relative error < 12, 15, and 20% were calculated for each POC meter for both glucose and  $\beta$ -HB using whole blood and plasma and compared to the US Food and Drug Administration relative error guidelines for human glucometers as previously described (26). For Bland–Altman plots and statistics, bias was calculated by subtracting the reference laboratory result from the POC meter result (32). The mean bias and the limits of agreement (LoAs) were then calculated for each POC meter for both glucose and  $\beta$ -HB using whole blood and plasma (32); LoAs were calculated with Equation 5:

$$LoA = Mean_{Difference} \pm (1.96 \times Standard\ Deviation_{Difference}) \quad (5)$$

Bias was considered statistically significant if the mean bias's 95% confidence interval (95% CI) did not include 0 (32). For Passing-Bablok regression, constant bias was present if the  $y$ -intercept's 95% CI did not include 0, whereas proportional bias was present if the slope's 95% CI did not include 1 (33, 34).

To explore the effect of multiple variables on the difference between the POC meters and the reference laboratory analyzer, linear mixed-effect models were constructed for each POC meter for both glucose and  $\beta$ -HB. The difference between the POC meter and reference laboratory for either glucose and  $\beta$ -HB was included as the dependent variable; sex (male or female), weight, PCV, BC, and matrix (plasma or whole blood) were included as fixed effects; and stingray species and individual stingrays were included as random effects.

Data were collated in a standard spreadsheet software spreadsheet (Microsoft Excel, Microsoft Corporation, Redmond, WA, United States). All analyses were performed in the free statistical software R (v4.3.1, R Foundation for Statistical Computing, Vienna, Austria).  $p$  values < 0.05 were considered significant. Data organization and summary statistics were performed using the dplyr (v1.1.2) (35) and psych (v2.3.6) (36) packages and their dependents. Bland–Altman plots and statistics were performed using the blandr (v0.5.3) (36) and ggplot2 (v3.4.3) (37) packages and their dependents. Passing-Bablok regression analyses were performed using the mcr package (v1.3.2) (38) and its dependents. Linear mixed-effect models were constructed using the lmerTest (v3.1.3) (39) package.

### 3 Results

Plasma glucose and  $\beta$ -HB concentrations, as determined by the reference laboratory, ranged from <20–63 mg/dL (median: 35 mg/dL) and 0.05–5.38 mmol/L (median: 0.22 mmol/L, Table 1), respectively. PCV, BC, and TS for all stingrays ranged from 11–32% (median: 24%), 0–4% (median: 0%), and 4.4–8.1 g/dL (median: 7.0 g/dL). Glucose concentration ranges as determined by the reference laboratory were similar across species: < 20–53 mg/dL (median: 26 mg/dL) for Atlantic stingrays, 32–59 mg/dL (median: 48 mg/dL) for cownose rays, 23–39 mg/dL (median: 36 mg/dL) for southern stingrays, and < 20–63 mg/dL (median: 30 mg/dL) for yellow stingrays. Similarly,  $\beta$ -HB concentration ranges as determined by the reference laboratory were similar across species: 0.1–0.4 mmol/L (median: 0.22 mmol/L) for Atlantic stingrays, 0.08–0.69 mmol/L (median: 0.31 mmol/L) for cownose rays, 0.14–0.28 mmol/L (median: 0.23 mmol/L) for southern stingrays, and 0.05–5.38 mmol/L (median: 0.22 mmol/L) for yellow stingrays with the maximum of the yellow stingray range being

skewed by one individual (5.38 mmol/L). With the one apparent yellow stingray outlier removed, the  $\beta$ -HB concentration range was 0.05–0.52 mmol/L for conspecifics included in this study.

The CV or imprecision of the three POC meters for glucose was less when using plasma (maximum: 0–4.9%) than whole blood (maximum: 11%); similarly, the CV of the three POC meters for  $\beta$ -HB was less when using plasma (maximum: 0%) than whole blood (maximum: 12.5%). The CV was 0% for all three POC meters when measuring  $\beta$ -HB using plasma (Table 2). All three POC meters had less  $TE_{obs}$  for both whole blood and plasma when measuring  $\beta$ -HB than glucose (Table 2). The proportions of results with percent relative error < 12, 15, and 20% were tabulated for each POC meter for glucose and  $\beta$ -HB using whole blood and plasma (Table 2).

Bland–Altman methods found the BHBCheck meter had significant positive bias (i.e., overestimated) for both glucose and  $\beta$ -HB regardless of the matrix (Table 3; Figures 1, 2). The Precision Xtra meter had a significant positive bias for glucose using plasma and  $\beta$ -HB using whole blood (Table 3; Figures 1, 2). The Nova Vet™ had significant negative bias (i.e., underestimated) for glucose regardless of the matrix (Table 3; Figures 1, 2). For glucose, the mean bias ranged from –18 to 48 mg/dL using whole blood and from –14 to 69 mg/dL using plasma across the three POC meters (Table 3). For  $\beta$ -HB, the mean bias ranged from –0.1 to 0.2 mmol/L using whole blood and from 0 to 0.1 mmol/L using plasma across the three POC meters (Table 3).

Passing-Bablok regression analyses found that the BHBCheck meter had a significant constant bias for glucose regardless of matrix and  $\beta$ -HB using plasma and a significant proportional bias for glucose using plasma (Table 3; Figures 3, 4). The Precision Xtra meter had a significant constant bias for glucose using whole blood and  $\beta$ -HB using plasma, as well as a significant proportional bias for both glucose and  $\beta$ -HB regardless of the matrix (Table 3; Figures 3, 4). The Nova Vet™ meter had a significant constant bias for  $\beta$ -HB using plasma and a significant proportional bias for glucose using whole blood and  $\beta$ -HB using plasma (Table 3; Figures 3, 4).

Linear mixed-effect models found sex, weight, PCV, and BC had no significant effect on differences between the individual POC meters and the reference laboratory for glucose or  $\beta$ -HB. Matrix had no significant effect on differences between the BHBCheck or Nova Vet™ meters and the reference laboratory methods for glucose or  $\beta$ -HB. However, matrix did have a significant effect on  $\beta$ -HB, but not glucose, for the Precision Xtra meter: differences in  $\beta$ -HB concentrations were significantly lower using whole blood than plasma (matrix estimate  $\pm$  standard error:  $-2.3 \pm 0.71$  mmol/L,  $p$  value = 0.002).

### 4 Discussion

This study evaluated the diagnostic agreement (i.e., accuracy) between three commercial POC glucose and  $\beta$ -HB meters to reference laboratory methods using whole blood and plasma from four stingray species commonly found in managed care environments. Plasma glucose concentrations determined by a reference laboratory method were similar to previous reports in cownose rays and southern stingrays (40–42); likewise,  $\beta$ -HB concentrations determined by a reference laboratory method fell within previously reported ranges in elasmobranchs (4). Of the three POC meters evaluated, the Precision Xtra—a human-licensed glucometer—showed the greatest agreement

**TABLE 1** Summary statistics of whole blood (WB) and plasma (P) glucose and  $\beta$ -hydroxybutyrate ( $\beta$ -HB) concentrations in stingrays determined by three commercial point-of-care glucose and  $\beta$ -HB meters and reference laboratory methods.

| Analyte              | Analyzer       | Matrix | <i>n</i> | Mean | SD   | Median | Min   | Max |
|----------------------|----------------|--------|----------|------|------|--------|-------|-----|
| Glucose (mg/dL)      | BHBCheck       | WB     | 22       | 79   | 21   | 79     | 16    | 119 |
|                      |                | P      | 22       | 99   | 30   | 99     | 56    | 154 |
|                      | Precision Xtra | WB     | 28       | 35   | 20   | 39     | < 20  | 71  |
|                      |                | P      | 28       | 44   | 22   | 45     | < 20  | 88  |
|                      | Nova Vet™      | WB     | 28       | 16   | 11   | < 20   | < 20  | 46  |
|                      |                | P      | 28       | 20   | 15   | < 20   | < 20  | 54  |
| Reference Lab        | P              | 28     | 34       | 15   | 35   | < 20   | 63    |     |
| $\beta$ -HB (mmol/L) | BHBCheck       | WB     | 28       | 0.7  | 0.8  | 0.6    | 0.2   | 4.4 |
|                      |                | P      | 28       | 0.6  | 0.9  | 0.4    | 0.1   | 5.3 |
|                      | Precision Xtra | WB     | 28       | 0.7  | 0.9  | 0.6    | 0.1   | 5.2 |
|                      |                | P      | 28       | 0.5  | 0.8  | 0.3    | 0     | 4.3 |
|                      | Nova Vet™      | WB     | 28       | 0.4  | 0.5  | 0.3    | < 0.1 | 2.9 |
|                      |                | P      | 28       | 0.6  | 0.5  | 0.5    | 0.2   | 3.3 |
| Reference Lab        | P              | 28     | 0.44     | 0.98 | 0.22 | 0.05   | 5.38  |     |

SD, Standard deviation; Min, Minimum; and Max, Maximum.

**TABLE 2** Percent coefficient of variation (CV), bias, and observed total error (TE<sub>obs</sub>) for whole blood (WB) and plasma (P) glucose and  $\beta$ -hydroxybutyrate ( $\beta$ -HB) concentrations in stingrays determined by three commercial point-of-care glucose and  $\beta$ -HB meters.

| Analyte         | Analyzer       | Matrix | <i>n</i> | CV   | Bias   | TE <sub>obs</sub> | < 12% RE | < 15% RE | < 20% RE |
|-----------------|----------------|--------|----------|------|--------|-------------------|----------|----------|----------|
| Glucose (%)     | BHBCheck       | WB     | 22       | 2.4  | 3188.2 | 3,193             | 0        | 0        | 0        |
|                 |                | P      | 22       | 2.7  | 3127.4 | 3132.8            | 0        | 0        | 0        |
|                 | Precision Xtra | WB     | 28       | 11   | 3316.8 | 3338.8            | 46.4     | 64.3     | 71.4     |
|                 |                | P      | 28       | 4.9  | 3289.1 | 3298.9            | 21.4     | 21.4     | 35.7     |
|                 | Nova Vet™      | WB     | 28       | 0    | 3371.4 | 3371.4            | 17.9     | 17.9     | 21.4     |
|                 |                | P      | 28       | 0    | 3359.1 | 3359.1            | 21.4     | 25       | 32.1     |
| $\beta$ -HB (%) | BHBCheck       | WB     | 28       | 12.4 | 103    | 127.8             | 3.6      | 3.6      | 10.7     |
|                 |                | P      | 28       | 0    | 88.4   | 88.4              | 10.7     | 10.7     | 10.7     |
|                 | Precision Xtra | WB     | 28       | 0    | 103    | 103               | 14.3     | 14.3     | 14.3     |
|                 |                | P      | 28       | 0    | 65.8   | 65.8              | 10.7     | 10.7     | 21.4     |
|                 | Nova Vet™      | WB     | 28       | 0    | 37.9   | 37.9              | 10.7     | 10.7     | 21.4     |
|                 |                | P      | 28       | 0    | 80.3   | 80.3              | 10.7     | 14.3     | 21.4     |

The American Society for Veterinary Clinical Pathology guidelines advise TE<sub>obs</sub> be <20% for point-of-care measurements within and above the reference interval. The percentages of measurements with percent relative error (RE) < 12, 15, and 20% are reported for each point-of-care meter, analyte, and matrix. The US Food and Drug Administration requires 95 and 98% of measurements to be within 12 and 15% of reference concentrations for glucometers intended for professional human healthcare use and 96 and 100% of measurements to be within 15 and 20% of reference concentrations for glucometers intended for over-the-counter use in human patients.

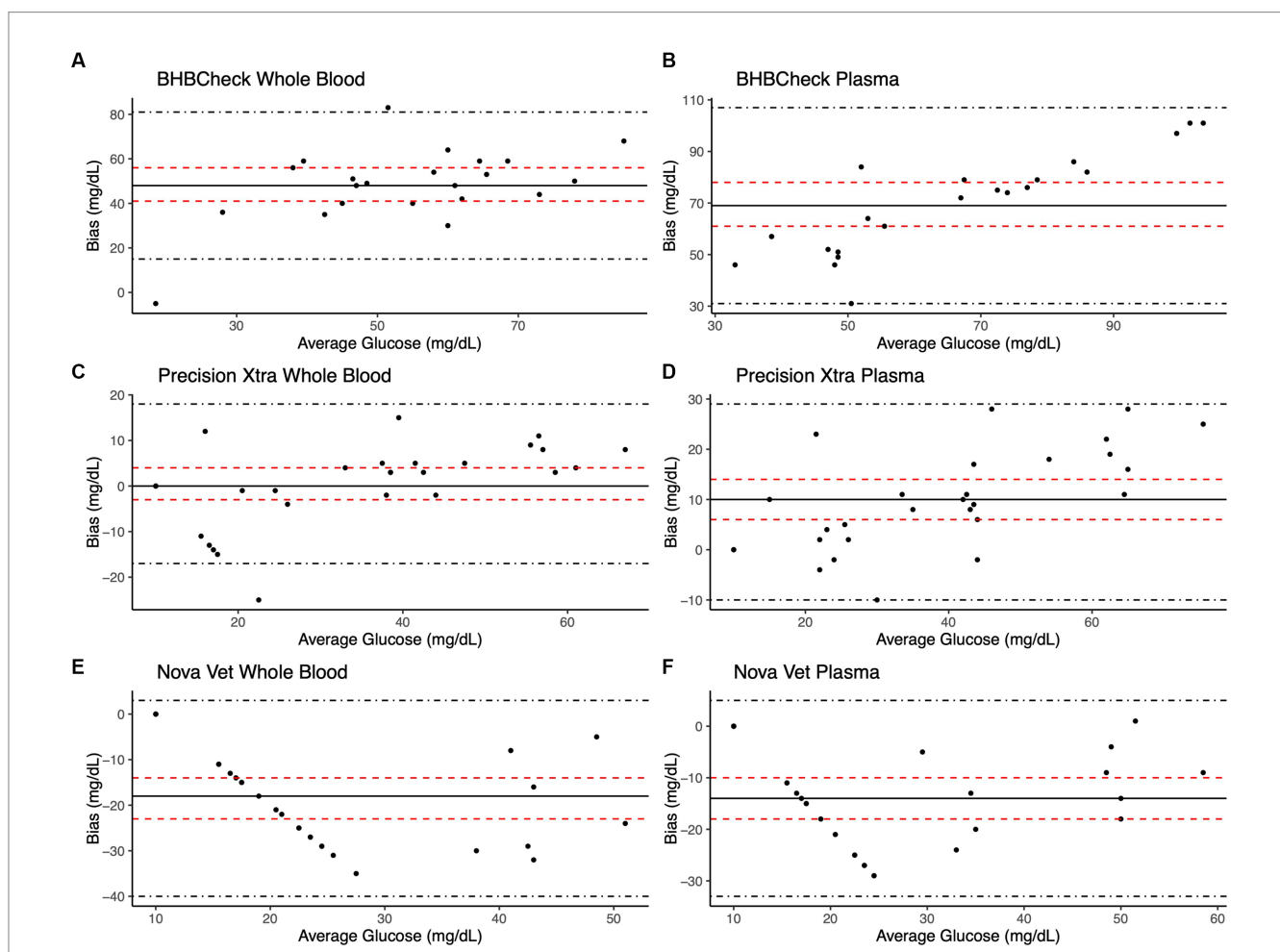
with the reference laboratory methods when measuring glucose from whole blood (mean bias: 0 mg/dL) and measuring  $\beta$ -HB from plasma (mean bias: 0.1 mmol/L) in stingrays. Stingray sex, weight, PCV, and BC did not significantly affect differences between the POC meters and the reference laboratory results. All three POC meters had better precision (i.e., intra-assay variability or repeatability) when using plasma than whole blood to measure glucose. Regarding the study’s hypothesis, the mean bias and CV for plasma  $\beta$ -HB concentrations was relatively small (min-max: 0–0.1 mmol/L and 0%, respectively) across all three POC meters, suggesting POC  $\beta$ -HB measurement may have sufficient agreement with reference laboratory methods and precision for clinical and field research purposes.

The American Society for Veterinary Clinical Pathology (ASVCP) has developed guidelines for quality assurance and control of POC glucose measurement in light of the rising number of commercially available POC glucometers (43). Point-of-care meter error can be categorized as pre-analytical, analytical, and post-analytical (43). Pre-analytical error was minimized in the present study by adequate observer training and using similar sampling techniques and venipuncture sites. However, species- or individual-specific matrix properties (e.g., blood viscosity, rheology, mean corpuscular volume, etc.) may have contributed to error between the three POC meters and the reference laboratory analyzer, particularly for glucose concentrations. The distribution of glucose between RBCs and plasma

**TABLE 3** Bland–Altman statistics and Passing-Bablok regression results for whole blood (WB) and plasma (P) glucose and  $\beta$ -hydroxybutyrate ( $\beta$ -HB) concentrations in stingrays determined by three commercial point-of-care glucose and  $\beta$ -HB meters and reference laboratory methods.

| Analyte              | Analyzer       | Matrix | Bland–Altman statistics |                   |                | Passing–Bablok regression |                 |
|----------------------|----------------|--------|-------------------------|-------------------|----------------|---------------------------|-----------------|
|                      |                |        | Bias                    | Lower LoA         | Upper LoA      | Intercept                 | Slope           |
| Glucose (mg/dL)      | BHBCheck       | WB     | 48 (41, 56)*            | 15 (2, 28)        | 81 (68, 94)    | 37 (3, 55)*               | 1.4 (0.9, 2.4)  |
|                      |                | P      | 69 (61, 78)*            | 31 (17, 46)       | 107 (92, 121)  | 29 (8, 46)*               | 2.3 (1.9, 2.8)* |
|                      | Precision Xtra | WB     | 0 (–3, 4)               | –17 (–23, –11)    | 18 (12, 24)    | –6 (–21, –1)*             | 1.3 (1.1, 1.6)* |
|                      |                | P      | 10 (6, 14)*             | –10 (–17, –3)     | 29 (23, 36)    | –5 (–15, 1)               | 1.4 (1.3, 1.7)* |
|                      | Nova Vet™      | WB     | –18 (–23, –14)*         | –40 (–47, –32)    | 3 (–4, 10)     | 10 (–7, 10)               | 0 (0, 0.6)*     |
|                      |                | P      | –14 (–18, –10)*         | –33 (–39, –27)    | 5 (–2, 11)     | –5 (–20, 10)              | 0.7 (0, 1.1)    |
| $\beta$ -HB (mmol/L) | BHBCheck       | WB     | 0.2 (0.1, 0.3)*         | –0.3 (–0.5, –0.1) | 0.8 (0.6, 1)   | 0.2 (0, 0.3)              | 1.3 (0.9, 2.5)  |
|                      |                | P      | 0.1 (0.1, 0.2)*         | –0.1 (–0.1, 0)    | 0.4 (0.3, 0.4) | 0.1 (0.1, 0.2)*           | 1.1 (1, 1.4)    |
|                      | Precision Xtra | WB     | 0.2 (0.1, 0.3)*         | –0.2 (–0.3, –0.1) | 0.6 (0.5, 0.8) | 0 (–0.2, 0.1)             | 2 (1.5, 2.7)*   |
|                      |                | P      | 0 (–0.1, 0.2)           | –0.5 (–0.7, –0.3) | 0.6 (0.4, 0.8) | –0.1 (–0.2, 0)            | 1.7 (1.3, 2.2)* |
|                      | Nova Vet™      | WB     | –0.1 (–0.3, 0.1)        | –1.1 (–1.4, –0.7) | 1 (0.6, 1.3)   | 0 (–0.2, 0.7)             | 1.1 (–2.2, 1.8) |
|                      |                | P      | 0.1 (–0.1, 0.3)         | –0.8 (–1.1, –0.5) | 1 (0.7, 1.3)   | 0.5 (0.3, 0.6)*           | 0 (–0.4, 0.6)*  |

The mean difference (Bias) and the limits of agreement (LoA)—defined as the mean difference  $\pm$  1.96 times the standard deviation of the differences—were calculated for each meter. Bias was considered statistically significant (\*) if the mean difference's 95% confidence interval (95% CI) did not include 0. For Passing-Bablok regression, constant bias was present (\*) if the 95% CI for the y-intercept did not include 0, whereas proportional bias was present (\*) if the 95% CI for the slope did not include 1.



**FIGURE 1** Bland–Altman plots of whole blood (A, C, E) and plasma (B, D, F) glucose concentrations in stingrays determined by three commercial point-of-care meters compared to reference laboratory methods. Black dots represent individual stingrays. The mean difference (Bias, solid black line) and the limits of agreement (LoA, black dot-dashed lines)—defined as the mean difference  $\pm$  1.96 times the standard deviation of the differences—were calculated for each meter. Bias was considered statistically significant if the 95% confidence interval (red dashed lines) mean difference did not include 0.

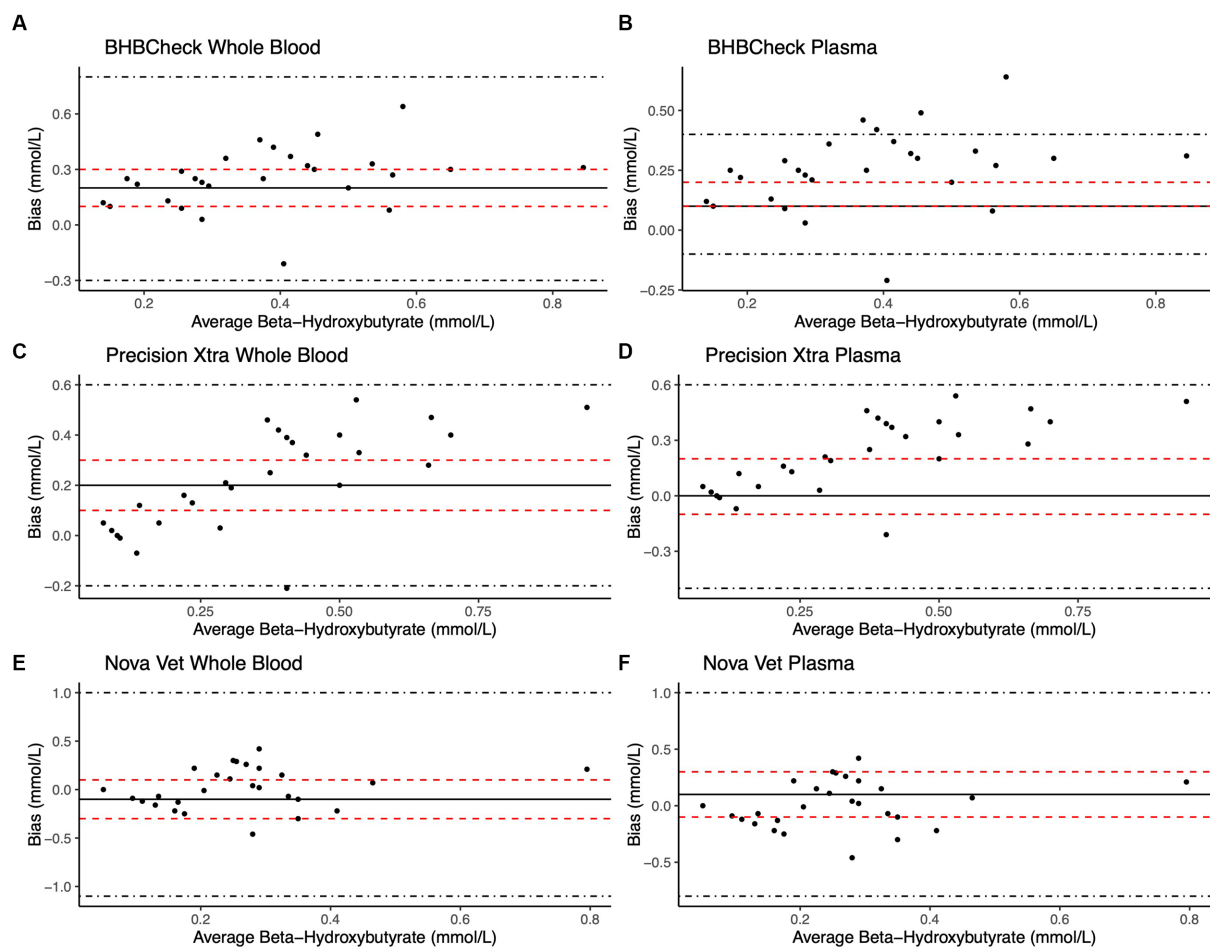


FIGURE 2

Bland–Altman plots of whole blood (A, C, E) and plasma (B, D, F)  $\beta$ -hydroxybutyrate ( $\beta$ -HB) concentrations in stingrays determined by three commercial point-of-care meters compared to reference laboratory methods. Black dots represent individual stingrays. The mean difference (Bias, solid black line) and the limits of agreement (LoA, black dot-dashed lines)—defined as the mean difference  $\pm 1.96$  times, the standard deviation of the differences—were calculated for each meter. Bias was considered statistically significant if the 95% confidence interval (red dashed lines) of the mean difference did not include 0. To avoid skewing the Bland–Altman plots, a single yellow stingray outlier ( $\beta$ -HB=5.38mmol/L via the reference laboratory method).

is an important matrix-related variable across species (43). Glucose is distributed equally between RBCs and plasma in humans, whereas in canine, feline, rabbit, and avian patients, glucose in circulation is found predominantly in plasma (43). To the authors' knowledge, the distribution of glucose between RBCs and plasma in the four stingray species sampled is unknown and remains a potential avenue of future physiologic research. Analytical error was minimized during data collection by using test strips before they expired, routine calibration using manufacturer-provided control materials, and not operating the POC meters under extreme environmental conditions. Post-analytical error was avoided by using consistent units of measurement (mg/dL for glucose, mmol/L for  $\beta$ -HB) and recording results immediately after being displayed by the POC meters.

In human and veterinary patients, anemia or hemoconcentration can falsely increase or decrease POC meter glucose or  $\beta$ -HB measurements (15, 18, 21, 43, 44). In stingrays, linear mixed-effect models found PCV had no significant effect on differences between the three POC meters and the reference laboratory analyzer, despite a subset of sampled stingrays with PCV values lower than the recommended ranges for the meter. Possible reasons PCV influences POC meter glucose or  $\beta$ -HB measurements include built-in

conversion factors or increased diffusion rate in test strips with lower PCV (43). This study did not assess whether analytical interference occurred due to other blood gas or biochemical parameters such as pH,  $pO_2$ , cholesterol, bilirubin, or biliverdin (43). All sampled stingrays were anesthetized with MS-222 to ensure safe and efficient handling, which could have resulted in analytical interference secondary to perianesthetic physiologic changes (e.g., acid–base status, body temperature, ventilation, vasoconstriction, etc.). Although veterinary studies are lacking, POC glucometers are less accurate intraoperatively in human patients under anesthesia (45, 46).

The ASVCP guidelines advise  $TE_{obs}$  for laboratory instruments, including POC glucose and  $\beta$ -HB meters, to be  $<10\%$  for values below the reference interval or  $<20\%$  for values within and above the reference interval (43, 47). All three POC meters for both glucose and  $\beta$ -HB using whole blood and plasma had  $TE_{obs} > 20\%$ , indicative of undesirable analytical performance. Furthermore, the US Food and Drug Administration requires 95 and 98% of measurements to be within 12 and 15% of reference concentrations for POC glucometers intended for professional healthcare use and 96 and 100% of measurements to be within 15 and 20% of reference concentrations for POC glucometers intended for over-the-counter use (26). All three

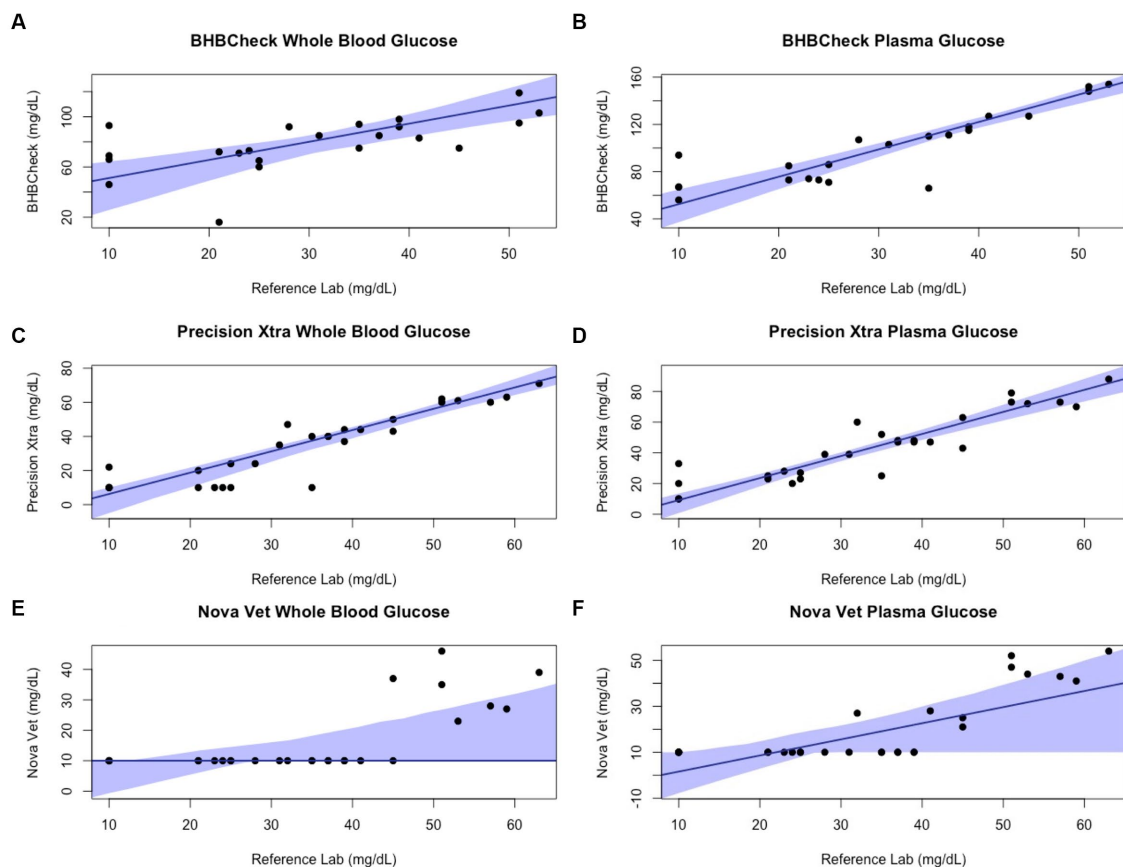


FIGURE 3

Passing-Bablok plots of whole blood and plasma glucose concentrations in stingrays determined by three commercial point-of-care meters compared to reference laboratory methods. Black dots represent individual stingrays. The solid blue line and associated shading represent the estimated regression line and its 95% confidence interval. For Passing-Bablok regression, constant bias was present if the 95% CI for the y-intercept did not include 0, whereas proportional bias was present if the 95% CI for the slope did not include 1.

POC meters evaluated did not meet US Food and Drug Administration relative error guidelines for human glucometers when measuring whole blood or plasma glucose concentrations in stingrays (27). To the authors' knowledge, neither the US Food and Drug Administration nor ASVCP has produced guidelines for POC  $\beta$ -HB meters despite their frequent use in monitoring diabetes mellitus in humans and domestic small animals.

Regardless of specific statistical analyses employed to compare new and established diagnostic methods, it is essential to appraise the clinical relevance of their analytic agreement. Clarke or Parkes Error Grid Analysis has historically been used in human and veterinary POC glucometer research to understand better potential clinical outcomes associated with POC meter accuracy (48, 49). This study implemented neither method due to the wide range of glucose and  $\beta$ -HB concentrations observed in elasmobranchs and little consensus on pathophysiologic thresholds for either analyte (e.g., hypoglycemic, ketonemia). However, the BHBCheck meter could potentially lead to highly inaccurate glucose interpretations due to the magnitude of its mean bias using whole blood (48 mg/dL) or plasma (69 mg/dL) and the narrow range of glucose concentrations observed by the reference laboratory (< 20–63 mg/dL). Passing-Bablok regression analyses found that all three POC meters mainly exhibited significant positive proportional bias (i.e., 95% CI > 1) measuring glucose and  $\beta$ -HB,

signifying greater error at higher concentrations. Consequently, future research should assess agreement with a reference laboratory under potential pathophysiologic states or physiologic extremes (e.g., hyperglycemia secondary to long-line capture, ketonemia due to prolonged fasting, etc.).

Limitations of the present study include limited sample sizes per species ( $n < 10$ ) and variable fasting durations before sampling, given differences in husbandry routines at the separate facilities. While imputation by substituting values below the LLOQ with a constant was employed in the present study, multiple imputation, maximum likelihood estimation, or kernel density estimation may be better alternative approaches. Although variation in venipuncture sites can influence PCV in sharks (50) and downstream biochemical analyses in other taxa, no statistically significant differences between venipuncture sites were found in southern stingrays (51). Although plasma was separated from RBCs promptly via centrifugation, glucose and  $\beta$ -HB concentrations could have decreased slightly between venipuncture and processing due to metabolism by cellular constituents.

Rapid, reliable detection of hyperglycemia due to physiologic stress could help veterinarians and researchers working with elasmobranchs more objectively monitor their welfare during capture, handling, and transport. Similarly, accurate POC measurement of  $\beta$ -HB could provide almost instant, cost-effective



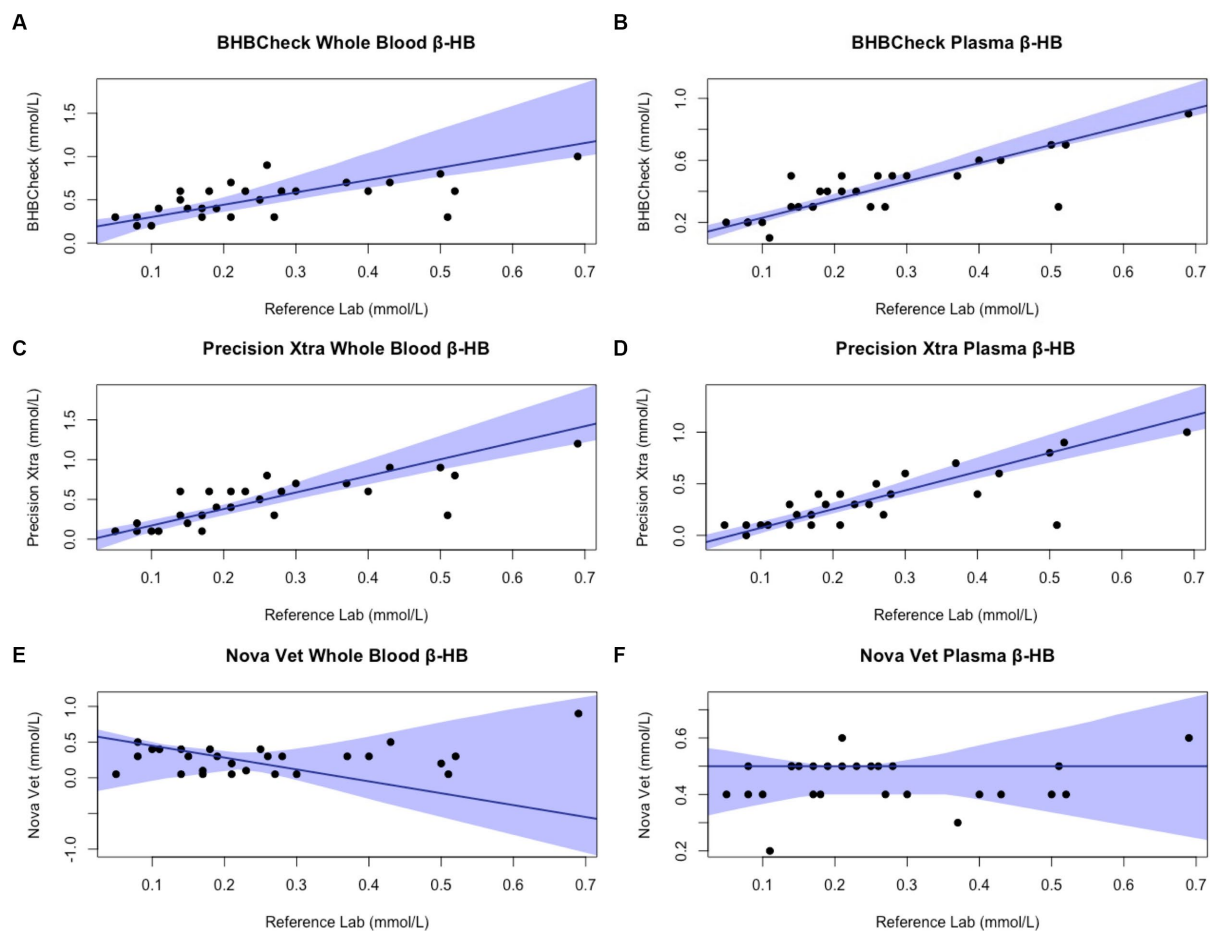


FIGURE 4

Passing-Bablok plots of whole blood and plasma  $\beta$ -hydroxybutyrate ( $\beta$ -HB) concentrations in stingrays determined by three commercial point-of-care meters compared to reference laboratory methods. Black dots represent individual stingrays. The solid blue line and associated shading represent the estimated regression line and its 95% confidence interval. For Passing-Bablok regression, constant bias was present if the 95% CI for the y-intercept did not include 0, whereas proportional bias was present if the 95% CI for the slope did not include 1. To avoid skewing the Passing-Bablok plots, a single yellow stingray outlier was removed ( $\beta$ -HB = 5.38 mmol/L via the reference laboratory method).

insight into the metabolic state of the elasmobranch patient vs. the turnaround time and expense of sending a sample to a reference laboratory. Further research should investigate POC meter clinical utility under different metabolic states in elasmobranchs. Using POC meters to measure glucose and  $\beta$ -HB concentrations in stingrays may be possible when reference methods are inaccessible.  $\beta$ -HB measurement using plasma will likely have sufficient accuracy and precision for clinical and field research purposes for the three POC meters evaluated in this study, especially the human-licensed glucometer, Precision Xtra.

## Data availability statement

The raw data supporting the conclusions of this article will be made available by the authors, without undue reservation.

## Ethics statement

The animal study was approved by North Carolina State University Institutional Animal Care and Use Committee. The study

was conducted in accordance with the local legislation and institutional requirements.

## Author contributions

ND: Conceptualization, Investigation, Data Curation, Formal analysis, Writing – original draft, Writing – review & editing. CC: Writing – review & editing. LW: Writing – review & editing. EC: Writing – review & editing.

## Funding

The NC State College of Veterinary Medicine Support Fund for Aquatic Animal Medicine provided funding for this study.

## Acknowledgments

The authors thank Craig Harms, Maria Serrano, Heather Broadhurst, Megan Cabot, Caitlin Hepps Keeney, Ashley Souza, Christian Capobianco, Kaitlynn Hicks, the animal care staff of the North

Carolina Aquariums, and the staff of the University Miami Avian & Wildlife Laboratory for their support and assistance with data collection.

## Conflict of interest

The authors declare that the research was conducted in the absence of any commercial or financial relationships that could be construed as a potential conflict of interest.

## References

- Aschliman NC, Claeson KM, McEachran JD. Phylogeny of Batoidea In: JC Carrier, JA Musick and MR Heithaus, editors. *Biology of Sharks and Their Relatives*. 2nd ed. Boca Raton: CRC Press (2012)
- Dulvy NK, Pacoureau N, Rigby CL, Pollom RA, Jabado RW, Ebert DA, et al. Overfishing drives over one-third of all sharks and rays toward a global extinction crisis. *Curr Biol*. (2021) 31:4773–4787.e8. doi: 10.1016/j.cub.2021.08.062
- Ballantyne JS. Jaws: the inside story. The metabolism of elasmobranch fishes. *Comp Biochem Physiol B Biochem Mol Biol*. (1997) 118:703–42. doi: 10.1016/S0305-0491(97)00272-1
- Speers-Roesch B, Treberg JR. The unusual energy metabolism of elasmobranch fishes. *Comp Biochem Physiol A Mol Integr Physiol*. (2010) 155:417–34. doi: 10.1016/j.cbpa.2009.09.031
- Ballantyne JS. Metabolism of elasmobranchs (Jaws II) In: RE Shadwick, AP Farrell and CJ Brauner, editors. *Fish Physiology*, vol. 34. Cambridge, MA: Academic Press (2015). 395–456.
- Wood CM, Walsh PJ, Kajimura M, McClelland GB, Chew SF. The influence of feeding and fasting on plasma metabolites in the dogfish shark (*Squalus Acanthias*). *Comp Biochem Physiol A Mol Integr Physiol*. (2010) 155:435–44. doi: 10.1016/j.cbpa.2009.09.006
- Walsh PJ, Kajimura M, Mommsen TP, Wood CM. Metabolic organization and effects of feeding on enzyme activities of the dogfish shark (*Squalus Acanthias*) rectal gland. *J Exp Biol*. (2006) 209:2929–38. doi: 10.1242/jeb.02329
- Deck CA, Anderson WG, Conlon JM, Walsh PJ. The activity of the rectal gland of the North Pacific spiny dogfish *Squalus Suckleyi* is glucose dependent and stimulated by glucagon-like Peptide-1. *J Comp Physiol B*. (2017) 187:1155–61. doi: 10.1007/s00360-017-1102-9
- Bouyoucos IA, Schoen AN, Wahl RC, Anderson WG. Ancient fishes and the functional evolution of the corticosteroid stress response in vertebrates. *Comp Biochem Physiol A Mol Integr Physiol*. (2021) 260:111024. doi: 10.1016/j.cbpa.2021.11.1024
- Harding L, Gallagher A, Jackson A, Bortoluzzi J, Dolton HR, Shea B, et al. Capture heats up sharks. *Conserv Physiol*. (2022) 10:coac065. doi: 10.1093/conphys/coac065
- Cliff G, Thurman GD. Pathological and physiological effects of stress during capture and transport in the juvenile dusky shark, *Carcharhinus Obscurus*. *Comp Biochem Physiol A Mol Integr Physiol*. (1984) 78:167–73. doi: 10.1016/0300-9629(84)90111-7
- Hoffmayer ER, Parsons GR. The physiological response to capture and handling stress in the Atlantic sharpnose shark *Rhizoprionodon terraenovae*. *Fish Physiol Biochem*. (2001) 25:277–85. doi: 10.1023/A:1023210620904
- Prohaska BK, Talwar BS, Grubbs RD. Blood biochemical status of deep-sea sharks following longline capture in the Gulf of Mexico. *Conserv Physiol*. (2021) 9:coaa113. doi: 10.1093/conphys/coaa113
- Chong SK, Reineke EL. Point-of-care glucose and ketone monitoring. *Top Companion Anim Med*. (2016) 31:18–26. doi: 10.1053/j.tcam.2016.05.005
- Wess G, Reusch C. Assessment of five portable blood glucose meters for use in cats. *Am J Vet Res*. (2000) 61:1587–92. doi: 10.2460/ajvr.2000.61.1587
- Tommaso MD, Aste G, Rocconi F, Guglielmini C, Boari A. Evaluation of a portable meter to measure ketonemia and comparison with ketonuria for the diagnosis of canine diabetic ketoacidosis. *J Vet Intern Med*. (2009) 23:466–71. doi: 10.1111/j.1939-1676.2009.0302.x
- Henderson DW, Schlesinger DP. Use of a point-of-care Beta-Hydroxybutyrate sensor for detection of Ketonemia in dogs. *Can Vet J*. (2010) 51:1000–2.
- Tennent-Brown BS, Koenig A, Williamson LH, Boston RC. Comparison of three point-of-care blood glucose meters for use in adult and juvenile alpacas. *J Am Vet Med Assoc*. (2011) 239:380–6. doi: 10.2460/javma.239.3.380
- Weingart C, Lotz F, Kohn B. Validation of a portable hand-held whole-blood ketone meter for use in cats. *Vet Clin Pathol*. (2012) 41:114–8. doi: 10.1111/j.1939-165X.2011.00389.x
- Zeugswetter FK, Rebuzzi L. Point-of-care B-Hydroxybutyrate measurement for the diagnosis of feline diabetic ketoacidemia. *J Small Anim Pract*. (2012) 53:328–31. doi: 10.1111/j.1748-5827.2012.01204.x
- Wess G, Reusch C. Evaluation of five portable blood glucose meters for use in dogs. *J Am Vet Med Assoc*. (2000) 216:203–9. doi: 10.2460/javma.2000.216.203
- Acierno MJ, Mitchell MA, Schuster PJ, Freeman D, Sanchez-Migallon Guzman D, Jr TNT. Evaluation of the agreement among three handheld blood glucose meters and a laboratory blood analyzer for measurement of blood glucose concentration in Hispaniolan Amazon parrots (*Amazona ventralis*). *Am J Vet Res*. (2009) 70:172–5. doi: 10.2460/ajvr.70.2.172
- Burdick S, Mitchell MA, Neil J, Heggem B, Whittington J, Acierno MJ. Evaluation of two point-of-care meters and a portable chemistry analyzer for measurement of blood glucose concentrations in juvenile white-tailed deer (*Odocoileus virginianus*). *J Am Vet Med Assoc*. (2012) 240:596–9. doi: 10.2460/javma.240.5.596
- Petriz OA, Antinoff N, Chen S, Kass PH, Paul-Murphy JR. Evaluation of portable blood glucose meters for measurement of blood glucose concentration in ferrets (*Mustela putorius furo*). *J Am Vet Med Assoc*. (2013) 242:350–4. doi: 10.2460/javma.242.3.350
- Proulx M-P, Vergneau-Grosset C, Hébert J, Bédard C, Maccolini É. Comparison of a Portage blood glucose meter analyzer with a benchtop point-of-care chemistry analyzer for measurement of blood glucose concentration in client-owned ferrets (*Mustela putorius furo*). *J Exot Pet Med*. (2022) 43:22–8. doi: 10.1053/j.jepm.2022.07.004
- Meade SM, Di Girolamo N, Cray C, Aquilino N, DiGeronimo PM, Brandão J. Point-of-care ketone meters may be used to estimate serum B-Hydroxybutyrate concentrations in healthy African penguins (*Spheniscus demersus*). *Am J Vet Res*. (2022) 83:ajvr.21.11.0192. doi: 10.2460/ajvr.21.11.0192
- Hiebert K, Reich S, Allender MC. Evaluation of the agreement between 2 point-of-care glucometers and a laboratory automated analyzer in North American raptors. *J Avian Med Surg*. (2022) 36:278–86. doi: 10.1647/21-00006
- Lieske CL, Ziccardi MH, Mazet JAK, Newman SH, Gardner IA. Evaluation of 4 handheld blood glucose monitors for use in seabird rehabilitation. *J Avian Med Surg*. (2002) 16:277–85. doi: 10.1647/1082-6742(2002)016[0277:EOHBGM]2.0.CO;2
- Westmoreland LSH, Archibald KE, Christiansen EF, Broadhurst HJ, Stoskopf MK. The mesopterygial vein: a reliable venipuncture site for intravascular access in Batoids. *J Zoo Wildl Med*. (2019) 50:369–74. doi: 10.1638/2018-0137
- Giskeødegård GE, Lydersen S. Measurements below the detection limit. *Tidsskr Nor Laegeforen*. (2022) 142. doi: 10.4045/tidsskr.22.0439
- Beal SL. Ways to fit a Pk model with some data below the quantification limit. *J Pharmacokinetic Pharmacodyn*. (2001) 28:481–504. doi: 10.1023/A:1012299115260
- Bland JM, Altman DG. Statistical methods for assessing agreement between two methods of clinical measurement. *Lancet*. (1986) 327:307–10. doi: 10.1016/S0140-6736(86)90837-8
- Passing H, Bablok W. A new biometrical procedure for testing the equality of measurements from two different analytical methods. Application of linear regression procedures for method comparison studies in clinical chemistry, part I. *J Clin Chem Clin Biochem*. (1983) 21:709–20. doi: 10.1515/cclm.1983.21.11.709
- Passing H, Bablok W. Comparison of several regression procedures for method comparison studies and determination of sample sizes. Application of linear regression procedures for method comparison studies in clinical chemistry, part II. *J Clin Chem Clin Biochem*. (1984) 22:431–45. doi: 10.1515/cclm.1984.22.6.431
- Wickham H, François R, Henry L, Müller K, Vaughan D (2023). Dplyr: A grammar of data manipulation. R package version 1.1.2.
- Datta D. (2017). Blandr: A Bland-Altman method comparison package for R. R package version 0.5.3.
- Wickham H. *Ggplot2: Elegant Graphics for Data Analysis*. New York, New York: Springer (2016).
- Potapov S, Mode LF, Schuetzenmeister A, Manuilova E, Dufey F, Raymaekers J (2023). Mcr: Method comparison regression. R package version 1.3.2.
- Kuznetsova A, Brockhoff P, Christensen R. LmerTest package: tests in linear mixed effects models. *J Stat Softw*. (2017) 82:1–26. doi: 10.18637/jss.v082.i13
- Cain DK, Harms CA, Segars A. Plasma biochemistry reference values of wild-caught southern stingrays (*Dasyatis americana*). *J Zoo Wildl Med*. (2004) 35:471–6. doi: 10.1638/03-107

## Publisher's note

All claims expressed in this article are solely those of the authors and do not necessarily represent those of their affiliated organizations, or those of the publisher, the editors and the reviewers. Any product that may be evaluated in this article, or claim that may be made by its manufacturer, is not guaranteed or endorsed by the publisher.

41. Ferreira CM, Field CL, Tuttle AD. Hematological and plasma biochemical parameters of aquarium-maintained cownose rays. *J Aquat Anim Health*. (2010) 22:123–8. doi: 10.1577/H09-048.1
42. Grant K, Campbell T. Hematology and plasma biochemistry value differences between acclimated and recently captive female southern stingrays, *Dasyatis Americana*. *J Zoo Aquar Res*. (2020) 8:59–66. doi: 10.19227/jzar.v8i1.254
43. Gerber KL, Freeman KP. ASVCP guidelines: quality assurance for portable blood glucose meter (glucometer) use in veterinary medicine. *Vet Clin Pathol*. (2016) 45:10–27. doi: 10.1111/vcp.12310
44. Selleri P, Di Girolamo N, Novari G. Performance of two portable meters and a benchtop analyzer for blood glucose concentration measurement in rabbits. *J Am Vet Med Assoc*. (2014) 245:87–98. doi: 10.2460/javma.245.1.87
45. Mraovic B, Schwenk ES, Epstein RH. Intraoperative accuracy of a point-of-care glucose meter compared with simultaneous central laboratory measurements. *J Diabetes Sci Technol*. (2012) 6:541–6. doi: 10.1177/193229681200600308
46. Karon BS, Donato LJ, Larsen CM, Siebenaler LK, Wells AE, Wood-Wentz CM, et al. Accuracy of capillary and arterial whole blood glucose measurements using a glucose meter in patients under general anesthesia in the operating room. *Anesthesiology*. (2017) 127:466–74. doi: 10.1097/ALN.0000000000001708
47. Harr KE, Flatland B, Nabity M, Freeman KP. ASVCP guidelines: allowable total error guidelines for biochemistry. *Vet Clin Pathol*. (2013) 42:424–36. doi: 10.1111/vcp.12101
48. Clarke WL, Cox D, Gonder-Frederick LA, Carter W, Pohl SL. Evaluating clinical accuracy of systems for self-monitoring of blood glucose. *Diabetes Care*. (1987) 10:622–8. doi: 10.2337/diacare.10.5.622
49. Parkes JL, Slatin SL, Pardo S, Ginsberg BH. A new consensus error grid to evaluate the clinical significance of inaccuracies in the measurement of blood glucose. *Diabetes Care*. (2000) 23:1143–8. doi: 10.2337/diacare.23.8.1143
50. Mylniczenko ND, Curtis EW, Wilborn RE, Young FA. Differences in hematocrit of blood samples obtained from two venipuncture sites in sharks. *Am J Vet Res*. (2006) 67:1861–4. doi: 10.2460/ajvr.67.11.1861
51. Phillips BE, Christiansen EF, Stoskopf MK, Broadhurst H, George R, Harms CA. Comparison of hematology, plasma biochemistry, and blood gas variables between 2 venipuncture sites in southern stingrays (*Dasyatis americana*). *Vet Clin Pathol*. (2016) 45:627–33. doi: 10.1111/vcp.12424