



## OPEN ACCESS

## EDITED BY

Fuxin Wei,  
Sun Yat-sen University, China

## REVIEWED BY

Zhao Qinghua,  
Shanghai General Hospital, China  
Songyang Liu,  
Aerospace Center Hospital, China

## \*CORRESPONDENCE

Yongming Xi  
xym700118@163.com

## SPECIALTY SECTION

This article was submitted to Orthopedic Surgery, a section of the journal Frontiers in Surgery

RECEIVED 26 August 2022

ACCEPTED 22 November 2022

PUBLISHED 06 January 2023

## CITATION

Qu Y, Du Y, Zhao Y, Li J, Luo H, Zhou J and Xi Y (2023) The clinical validity of atlantoaxial joint inclination angle and reduction index for atlantoaxial dislocation.  
Front. Surg. 9:1028721.  
doi: 10.3389/fsurg.2022.1028721

## COPYRIGHT

© 2023 Qu, Du, Zhao, Li, Luo, Zhou and Xi. This is an open-access article distributed under the terms of the [Creative Commons Attribution License \(CC BY\)](https://creativecommons.org/licenses/by/4.0/). The use, distribution or reproduction in other forums is permitted, provided the original author(s) and the copyright owner(s) are credited and that the original publication in this journal is cited, in accordance with accepted academic practice. No use, distribution or reproduction is permitted which does not comply with these terms.

# The clinical validity of atlantoaxial joint inclination angle and reduction index for atlantoaxial dislocation

Yang Qu, Yukun Du, Yonghua Zhao, Jianyi Li, Hao Luo, Jiayang Zhou and Yongming Xi\*

Department of Spinal Surgery, The Affiliated Hospital of Qingdao University, Qingdao, China

**Objective:** Atlantoaxial dislocation patients with neurological defects require surgery. Sometimes, release surgery is necessary for irreducible atlantoaxial dislocation to further achieve reduction. Whether release surgery is essential relies on the surgeon's experience and lacks objective reference criteria. To evaluate the value of atlantoaxial joint inclination angle (AAJI) in sagittal and coronal planes and reduction index (RI) in the surgical approach selection for atlantoaxial dislocation.

**Methods:** Retrospectively analyzed 87 cases (42 males and 45 females, 9–89 years) of atlantoaxial dislocation from January 2011 to November 2020. In addition, 40 individuals without atlantoaxial dislocation were selected as the control group. Imaging parameters were compared between the two groups. According to surgical methods, the experiment group was divided into two groups including Group A (release surgery group) and Group B (conventional operation group). The parameters were measured based on CT and x-ray. The relevant imaging parameters and clinical scores, including the AAJI in sagittal and coronal planes, the atlas-dens interval (ADI) before and after traction, the RI, and JOA scores were measured and analyzed.

**Results:** The sagittal and coronal atlantoaxial joint inclination angles (SAAJI and CAAJI) in the control group were  $7.91 \pm 0.42^\circ$ (L),  $7.99 \pm 0.39^\circ$ (R),  $12.92 \pm 0.41^\circ$ (L),  $12.97 \pm 0.37^\circ$ (R), in A were  $28.94 \pm 1.46^\circ$ (L),  $28.57 \pm 1.55^\circ$ (R),  $27.41 \pm 1.29^\circ$ (L),  $27.84 \pm 1.55^\circ$ (R), and in B were  $16.16 \pm 0.95^\circ$ (L),  $16.80 \pm 1.00^\circ$ (R),  $24.60 \pm 0.84^\circ$ (L),  $24.92 \pm 0.93^\circ$ (R) respectively. Statistical analysis showed that there was a statistical difference in the SAAJI between the control group and the experiment group ( $P < 0.01$ ), as well as between groups A and B ( $P < 0.01$ ). The RI in groups A and B was  $27.78 \pm 1.46\%$  and  $48.60 \pm 1.22\%$  respectively, and there was also a significant difference between the two groups ( $P < 0.01$ ). There was negative correlation between SAAJI and RI.

**Conclusions:** The SAAJI and RI can be used as objective imaging indexes to evaluate the reducibility of atlantoaxial dislocation. And these parameters could further guide the selection of surgery methods. When the RI is smaller than 48.60% and SAAJI is bigger than  $28.94^\circ$ , anterior release may be required.

## KEYWORDS

reduction index, atlantoaxial joint angle, atlas-dens interval, operation approach, atlantoaxial dislocation

## Abbreviations

AAD, atlantoaxial dislocation; IAAD, irreducible atlantoaxial dislocation; CT, computed tomography; JOA, Japanese Orthopaedic Association; AAJI, atlantoaxial joint inclination angle; SAAJI, sagittal atlantoaxial joint inclination angle; CAAJI, coronal atlantoaxial joint inclination angle; RI, reduction index; ADI, atlas-dens interval.

## Introduction

Atlantoaxial dislocation (AAD) refers to the stability loss of the atlantoaxial joint, resulting in the abnormal atlantoaxial structure (1). AAD can be caused by various reasons, including inflammation, tumor, trauma, odontoid fracture, congenital developmental deformity, and rupture of the transverse ligament. It can lead to neurological symptoms and paralysis. AAD could be divided into three types in clinical: traction reduction type, operation reduction type and irreducible type. Irreducible atlantoaxial dislocation (IAAD) is one of the types of AAD, which is difficult to reduction due to various factors, including fibrous scars, osteophyte formation, and even bony barrier. Traditionally, the diagnosis of IAAD can be made by observing the dynamic position x-ray to judge the difficulty of reduction under the dynamic position. But different opinions have been raised by some surgeons. Wang C et al. indicated that IAAD was considered if large weight (1/6 bodyweight) cranial traction after anesthesia was not able to achieve the reduction while the preoperative CT showed the absence of C1–2 lateral mass joint fusion (2). Salunke et al. believed that traction should start at 7% of body weight and gradually increase traction weight to 20% of maximum bodyweight within 48–72 h (3). It was generally believed that preoperative cranial traction was necessary for the diagnosis of IAAD.

In the treatment of AAD, decompression and maintaining regional stability of the cervical spine are the basic requirements of the operation. For some IAAD patients, posterior reduction and fixation cannot achieve complete reduction, and release surgery is necessary. The routine surgical procedures for atlantoaxial dislocation are as follows: (1) Anterior release and posterior fixation; (2) posterior reduction and fusion; (3) posterior release and fixation (4–6). At present, the management of release surgery is mainly based on the surgeon's clinical experience, lacking objective imaging reference standards (7). But there was controversial about conduction of release surgery for IAAD, which increases the blindness of treatment choice of AAD (8, 9). It has been found in clinical practice that many factors affect the reduction of AAD. Salunke et al. proposed that the angle of the atlantoaxial joint surface is of great significance in evaluating the difficulty of AAD in the sagittal plane. Based on our experience, we found that there is the correlation between atlantoaxial joint inclination angle (AAJI) and AAD. It is considered that the greater the angle and amplitude of forward tilt of atlas, the higher the relative difficulty of reduction. Therefore, it is crucial to establish an accurate and relatively objective imaging criterion for evaluating the difficulty of AAD reduction (10). Based on this, our previous study proposed a new concept named sagittal atlantoaxial joint inclination angle (SAAJI) and reduction index (RI),

which can be used as an objective imaging criterion to guide the selection of surgical methods, but the study sample size was small. Aiming to further evaluate the significance of AAJI in evaluating the difficulty of atlantoaxial reduction, the CT and x-ray were conducted retrospectively to analyze the clinical value of AAJI and RI for AAD, and to provide surgeons with objective standards helping the selection of surgical procedures.

## Materials and methods

### Patients

With the approval of the ethics committee of our hospital, the patients who signed the informed consent form were included in this study. A total of 87 patients with AAD and 40 patients with normal cervical vertebra structure, from January 2011 to November 2020, were enrolled in this study. The inclusion criteria are as follows: (1) The patients with AAD received traction before the operation; (2) The patients had no oral or periodontal-related diseases; (3) Imaging examination is complete; (4) The patients were followed up for at least 12 months. The exclusion criteria are as follows: (1) The patients did not receive traction before operation; (2) Patients with coagulation system diseases or other severe comorbidities; (3) Lack of important examination; (4) The follow-up time was less than 12 months; (5) Patients with severe osteoporosis ( $T \leq -2.5$ ). The surgery selection criteria are as follows: when the intraoperative skull traction cannot get satisfied reduction, the release and reduction operation will be performed, otherwise conventional reduction operation will be performed. The 40 patients with normal cervical vertebra structure were regarded as the control group. Based on the surgical procedure, the 87 patients were further divided into two groups: Group A (release surgery group) and Group B (conventional operation group).

### Clinical evaluation

Select reasonable statistical methods to sort out and compare the basic information of patients in groups A and B, then clarify whether there are statistical differences in the proportion of men and women and the average age of patients. All patients used the latest cervical Japanese Orthopaedic Association (JOA) scores to evaluate the degree of cervical spinal symptoms and calculated the improvement rate of cervical spinal function after treatment. The formula of JOA improvement rate (IR) was  $(\text{postoperative total score} - \text{preoperative total score}) / (\text{17} - \text{preoperative total score}) \times 100\%$ .

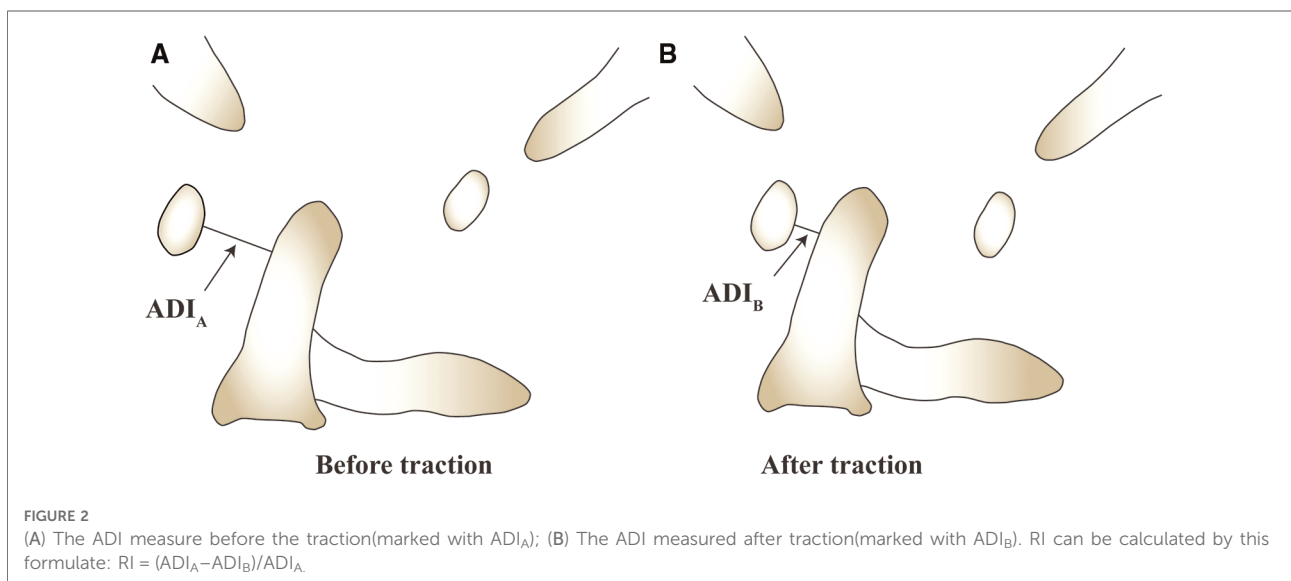
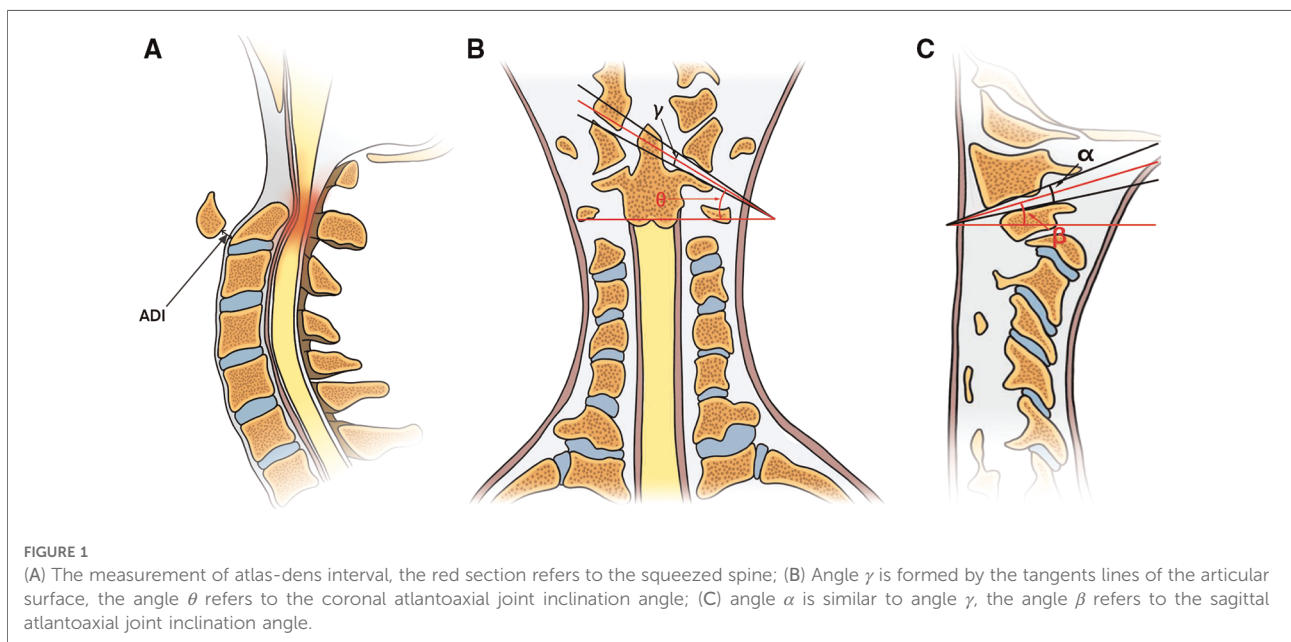
### Radiological evaluation

Atlas-dens interval (ADI) and reduction index (RI): The vertical distance from the posterior edge of the anterior arch of the atlas to the tangent line of the odontoid was measured in the anterior and lateral cervical x-ray examination, that is the ADI (Figure 1A). Then, according to the change of the ADI before and after traction, the RI can be calculated, and the calculation formula is (pre-traction ADI—post-traction ADI)/pre-traction ADI\*100% (Figure 2).

Coronal Atlantoaxial joint inclination angle (CAAJI): similar to the sagittal plane, using the bone window of CT

scan, the tangents of inferior articular surface of lateral mass of atlas and superior articular surface of axis were made in coronal plane, and the included angle of the two tangents was angle  $\gamma$ . The angle which was formed by the bisector of angle  $\gamma$  and the horizontal line was the angle  $\theta$  (Figure 1B).

Sagittal Atlantoaxial joint inclination angle (SAAJI): using the bone window of CT scan of cervical vertebra, the tangents of inferior articular surface of lateral mass of atlas and superior articular surface of axis were made in sagittal plane, and the included angle of the two tangents was angle  $\alpha$ . The angle was formed by the bisector of angle  $\alpha$  and the horizontal line was the angle  $\beta$  (Figure 1C).



## Statistical analysis

Using SPSS 26.0 version software (SPSS Inc, Chicago, Illinois, USA.) for data analysis. The normality of the data was first tested by the Shapiro-Wilk test. All data are presented as the means and standard deviations in both chart and words. The statistical significance threshold was  $P < 0.05$ . In addition, Spearman correlation analysis was also conducted to get the correlation and correlation degree between parameters.

## Result

### Patient cohort

A total of 87 patients with AAD were included in the experiment group. And we statistically analyzed the information between Group A and B. The average age in group A was  $57.8 \pm 2.6$  years (range 28–78 years), with 57.1% females and 42.9% males. While in the group B, the average age was  $54.5 \pm 2.1$  years (range 9–89 years), with 49.2% females and 50.8% males. There were 28 patients in group A, 59 patients in group B. As we can see through the analysis, there are no statistical difference between Group A and B in both age and sex. In addition, the results of control group showed that the average age is  $59.3 \pm 1.9$  years (range 35–76), with 45.0% females and 55.0% males (Table 1).

### Atlantoaxial joint inclination angle

In the control group, the AAJI in sagittal plane was  $7.95 \pm 0.28^\circ$ , in coronal plane was  $12.94 \pm 0.28^\circ$ . In group A, the average AAJI in coronal plane was  $27.41 \pm 1.29^\circ$ (L) and  $27.84 \pm 1.55^\circ$ (R), in sagittal plane is  $28.94 \pm 1.46^\circ$ (L) and  $28.57 \pm 1.55^\circ$ (R). In group B, the average AAJI in coronal plane was  $24.60 \pm 0.84^\circ$ (L) and  $24.92 \pm 0.93^\circ$ (R), in sagittal plane was  $16.16 \pm 0.95^\circ$ (L) and  $16.80 \pm 1.00^\circ$ (R). Statistical analysis showed that there was significant difference in AAJI between control group and experiment group ( $P < 0.01$ ). Meanwhile, there was also significant difference in AAJI between group A and B ( $P < 0.01$ ) (Table 2).

TABLE 1 The general patients information.

Group	Case	Age	Sex (M:F)	IR
A	28	$57.75 \pm 2.60$	12:16	$81.02 \pm 2.23\%$
B	59	$54.54 \pm 2.13$	30:29	$79.52 \pm 1.82\%$
P-Value		0.372	0.486	0.624

IR, JOA improvement rate.

### ADI and reduction index

The average ADI before and after traction in group A is  $6.49 \pm 0.22$  and  $4.74 \pm 0.22$  respectively, reduction index is  $27.78 \pm 1.46\%$ ; then the average ADI before and after traction in group B is  $7.06 \pm 0.24$  and  $3.70 \pm 0.18$  respectively, reduction index is  $48.60 \pm 1.22\%$ . Statistical analysis showed that there was no statistical difference in ADI before traction between group A and group B, but the reduction index in group A and group B were significantly different ( $P < 0.01$ ) (Table 2).

### JOA score

Among the included patients with AAD, we made a comparative analysis of JOA scores between group A and group B. In group A, the preoperative JOA scores were  $8.50 \pm 0.35$ , the postoperative JOA scores was  $15.21 \pm 0.25$ , the average JOA score improvement rate was  $81.02 \pm 2.23\%$ . In group B, the average preoperative JOA scores were  $8.53 \pm 0.21$ , the average postoperative JOA score was  $15.15 \pm 0.18$ , and the average improvement rate was  $79.52 \pm 1.82\%$  (Table 2). This showed that the spinal cord function was improved, the symptoms were relieved in both groups after the operation, and there was no statistical difference in JOA improvement rates between two groups (Table 1).

### The correlation between ri and AAJI

The results of the correlation analysis showed that SAAJI of groups A and B were negatively correlated with the RI ( $P < 0.01$ ), the correlation coefficient index is  $-0.731$ , indicating that the smaller the atlantoaxial inclination angle

TABLE 2 Comparison of key parameters.

Variable/parameters	Group A	Group B	P Value
SAAJI (L)	$28.94 \pm 1.46^\circ$	$16.16 \pm 0.95^\circ$	$<0.01$
SAAJI (R)	$28.57 \pm 1.55^\circ$	$16.80 \pm 1.00^\circ$	$<0.01$
CAAJI (L)	$27.41 \pm 1.29^\circ$	$24.60 \pm 0.84^\circ$	$<0.01$
CAAJI (R)	$27.84 \pm 1.55^\circ$	$24.92 \pm 0.93^\circ$	$<0.01$
JOA (Pre-O)	$8.50 \pm 0.35$	$8.53 \pm 0.21$	0.948
JOA (Post-O)	$15.21 \pm 0.25$	$15.15 \pm 0.18$	0.843
ADI (Pre-T)	$6.49 \pm 0.22$	$7.06 \pm 0.24$	0.142
ADI (Post-T)	$4.74 \pm 0.22$	$3.70 \pm 0.18$	$<0.01$
RI	$27.78 \pm 1.46\%$	$48.60 \pm 1.22\%$	$<0.01$

SAAJI, sagittal atlantoaxial joint inclination angle; CAAJI, coronal atlantoaxial joint inclination angle; JOA (Pre-O), preoperative JOA scores; JOA (Post-O), postoperative JOA scores; ADI(Pre-T), ADI before traction; ADI(Post-T), ADI after traction; RI, reduction index; L, left; R, right.



was, the larger the reduction index was. In contrast, CAAJI of both group A and group B were not significantly correlated with the RI. RI represents the difficulty of reduction. This showed that when the atlantoaxial inclination angle in sagittal is bigger, the difficulty of reduction is bigger.

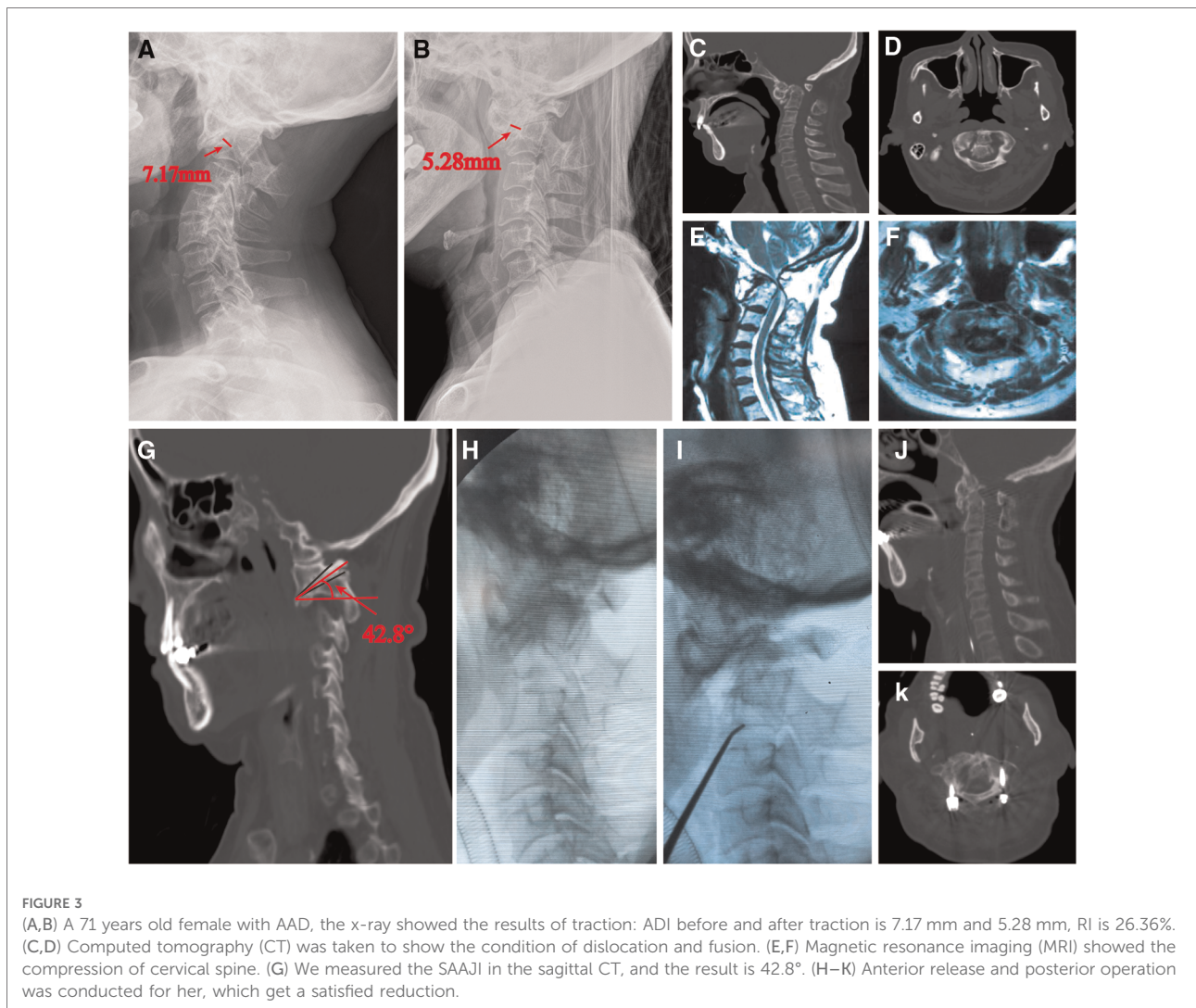
### Case presentation

We select two typical AAD patients who were treated with the guide of our findings. Patient 1: It's a 71 years old female with AAD who suffered from progressive numbness and weakness in the limbs for more than 2 years. According to our measurement, the ADI before and after traction is 7.17 mm and 5.28 mm, SAAJI is 42.8°, RI is 26.36%, and JOA score is 6. With the guide of the standard we raised, we conducted an anterior release and posterior fixation operation for her, which resulted in a satisfied reduction and relief in

symptoms (Figure 3). After the surgery, the JOA score is 12. Patient 2: It's a 45 years old female with AAD whose ADI before and after traction is 8.13 mm and 4.02 mm, SAAJI is 27.6°, RI is 50.55% and JOA score is 7. We conducted a posterior operation for her, which also resulted in satisfied reduction and relief in symptoms (Figure 4). After this surgery, the JOA score is 14.

### Discussion

Atlantoaxial dislocation is a rare and potentially fatal anatomical disorder of the occipitocervical region leading to permanent neurological defects or sagittal deformities without timely treatment (1). For AAD, the traditional operation is one-stage posterior reduction and internal fixation (11). But for IAAD, release surgery may be necessary (11, 12). At present, anterior release includes transoral approach,



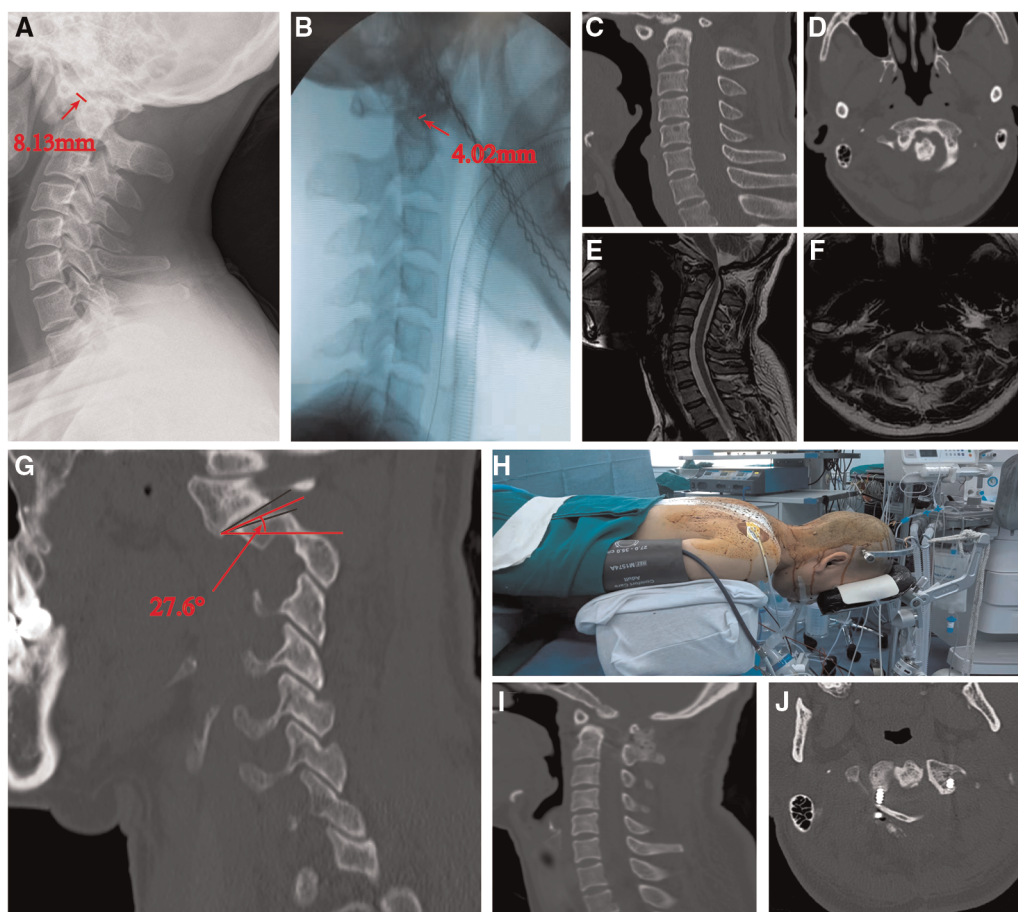


FIGURE 4

(A, B) A 42 years old female with AAD, traction was also conducted for her to evaluate the difficulty of reduction, which get the ADI before and after traction is 8.13 mm and 4.12 mm, RI is 50.55%. (C–F) CT and MRI showed that the fusion is not too much and the cervical spine is compressed severely. (H–J) The SAAJI was also measured, the result is 27.6° (G). We conducted a posterior operation with traction and get satisfied reduction.

transnasal approach and submandibular approach (2, 13–15). Yin QS et al. proposed the TARP plate system to perform decompression, reduction, internal fixation through the transoral approach (16–20). Wang et al. promoted transoral atlantoaxial release combined with posterior fixation to treat irreducible atlantoaxial dislocation (2). However, the transoral approach will increase the risk of infection during the perioperative period. Some patients with oral diseases are unable to complete transoral release surgery. Combined anterior and posterior surgery also has some limitations. It will cause long operation time, high risk, complicated situation, and higher cost (21). Moreover, posterior release surgery can also achieve good results in some cases with the development of surgical techniques. By improving Goel technique, Chen Z et al. performed one-stage posterior joint release on patients with atlantoaxial dislocation with bony fusion and reduced the dislocated atlantoaxial vertebra (22). Although a variety of surgical methods, the choice of

surgical methods is mainly based on the surgeon's clinical experience (23). Meanwhile, anterior release is also controversial (15). As far as we know, there was few research on the objective criteria for the selection of surgical methods for atlantoaxial dislocation.

The atlantoaxial joint is responsible for a large part of the movement of the neck, and these movements usually occur in different planes. Salunke et al. objectively evaluated the dislocation of the first and second cervical vertebrae in multiple planes and discussed the possible mechanisms and methods for the reduction of various types of dislocation (24). Chandra et al. firstly indicated the correlation between the position of the atlantoaxial joint and the severity of the AAD. They also described the new indexes named "sagittal joint inclination" to describe the position and shape of the atlantoaxial joint (25). Baoge Liu et al. also studied the changes of related parameters of the atlantoaxial joint and atlantooccipital joint before and after anterior cervical surgery

and discussed the role of related parameters of cervical spine in treatment and evaluation of curative effect (26). For spinal surgeons, it is important to understand the position and shape of atlantoaxial joints in normal people for better knowing the correction process of AAD. Therefore, it is worthy to dictate criteria for the selection of reasonable surgery methods according to the parameters.

With regard to the AAJI involving in this study, Salunke et al. proposed that an angle between the tangent lines of the atlantoaxial joint surface is of significance for the evaluation of the severity of atlantoaxial dislocation. In that study, 24 patients were included and measured. He considered that the larger angle predicted the higher severity of atlantoaxial dislocation (3). But the study lacks the further research of correlation between the angle and the difficulty of reduction. Chandra et al. have confirmed that the atlantoaxial inclination angle was related to the severity and difficulty of reduction, which was of great significance in distinguishing and judging irreducible atlantoaxial dislocation and reducible atlantoaxial dislocation. This study also confirmed that the atlantoaxial inclination angle on the coronal plane was related to the severity of basilar invagination (25). The above studies only researched the relationship between imaging parameters and the severity of the atlantoaxial dislocation without guiding the selection of surgical methods. Furthermore, the measurement of angles was merely based on the plane conversion. Another index involved in this study is the ADI, which refers to the vertical distance from the leading edge of the posterior arch of the atlas to the tangent line of the leading edge of the odontoid, which is a pivotal measurement parameter for the diagnosis of AAD. Our former study put forward the concept of RI by studying the AAD, which is calculated by the ADI before and after traction. It is used to express the degree of atlantoaxial reduction in this plane after traction (27).

In this study, based on the influence of multi-dimensional stability of atlantoaxial joint on reduction, the SAAJI was measured, and CAAJI was added to analyze the effect of coronal angle on the difficulty of reduction. The RI was used to analyze the correlation between the reduction index and the inclination angle of coronal plane and sagittal plane. Through the analysis of imaging and clinical knowledge, we found that patients in group A had larger inclination angle of sagittal plane ( $28.94 \pm 1.46^\circ$ ) and smaller reduction index ( $27.78 \pm 1.46\%$ ) than patients in group B, which were respectively  $16.80 \pm 1.00^\circ$  and  $48.60 \pm 1.22\%$ . In other words, higher inclination angle may indicate the higher difficulty of reduction. For these patients, anterior release is necessary to ensure the reduction and the decompression of spinal cord. Compared with the previous studies, this study not only added the CAAJI as a new evaluation index but also included more patients, which further improved the accuracy and reliability of this study.

What's more, multiple regression analysis showed that the RI was negatively correlated with the SAAJI, but there was no relation with CAAJI. Through these parameters, we can judge the difficulty of reduction of AAD and guide the determination of surgery. For example, if the SAAJI is more than the average in group A ( $28.94 \pm 1.46^\circ$ ), RI is less than the average level of group B ( $48.60 \pm 1.22\%$ ), release surgery may be required. Otherwise, the single-stage posterior reduction surgery is feasible. This study improved the evaluation level of SAAJI and RI for judging the difficulty of atlantoaxial dislocation reduction, and further proved that the coronal atlantoaxial inclination angle is invalid. Furthermore, we found that in group A, the SAAJI of some patients cannot meet the standard of release surgery, but the RI is small, and obvious bone fusion can be seen in CT images. For this kind of patients, the anterior release also can be conducted based on the actual clinical situation. Through the study, a more clinically valuable objective standard for the selection of surgical methods for AAD can assist doctors in deciding the management of anterior release. It also has advantages in avoiding secondary operation, reducing the cost and risk of the operation.

In this study, there are still some limitations. It is still necessary to expand the samples quantity and improve the reliability of the SAAJI and RI. According to the conclusions of this study, prospective experiments need to be carried out in the future to improve the credibility. In addition, the selection of surgery method may also have influence on the division of group. The atlantoaxial joint is a multi-dimensional structural complex, so we still need to study more parameters in order to improve the ability of the model to simulate the real situation.

## Conclusion

In this study, there is negative correlation between SAAJI and RI. The SAAJI indicated the severity of AAD, the RI indicated the difficulty of reduction. When the RI is smaller than 48.60% and SAAJI is bigger than  $28.94^\circ$ , anterior release may be required. The atlantoaxial joint inclination angle and reduction index can be used as objective criteria to guide the selection of surgical methods for atlantoaxial dislocation.

## Data availability statement

The raw data supporting the conclusions of this article will be made available by the authors, without undue reservation.



## Author contributions

YQ: took part in the whole experiment including data collection, data analysis, drawing of figures and writing of the manuscript. YX: contributed to the conception of the study. YD and JL: contributed to the drawing of the figures and data analysis. YZ and HL: contributed to the data collection. JZ: helped perform the data analysis. All authors contributed to the article and approved the submitted version.

## Funding

This study was supported by Taishan Scholar Project of Shandong Province, China (No. ts20190985).

## References

- Yang SY, Boniello AJ, Poorman CE, Chang AL, Wang S, Passias PG. A review of the diagnosis and treatment of atlantoaxial dislocations. *Global Spine J.* (2014) 4:197–210. doi: 10.1055/s-0034-1376371
- Wang C, Yan M, Zhou HT, Wang SL, Dang GT. Open reduction of irreducible atlantoaxial dislocation by transoral anterior atlantoaxial release and posterior internal fixation. *Spine.* (2006) 31:E306–13. doi: 10.1097/01.brs.0000217686.80327.e4
- Salunke P, Sharma M, Sodhi HB, Mukherjee KK, Khandelwal NK. Congenital atlantoaxial dislocation: a dynamic process and role of facets in irreducibility. *J Neurosurg Spine.* (2011) 15:678–85. doi: 10.3171/2011.7.SPINE1152
- Ren X, Gao F, Li S, Yang J, Xi Y. Treatment of irreducible atlantoaxial dislocation using one-stage retropharyngeal release and posterior reduction. *J Orthop Surg.* (2019) 27:2309499019870465. doi: 10.1177/2309499019870465
- Lee WC, Lim CH, Shi H, Tang LA, Wang Y, Lim CT, et al. Origin of enhanced stem cell growth and differentiation on graphene and graphene oxide. *ACS Nano.* (2011) 5:7334–41. doi: 10.1021/nn202199c
- Zhu C, Wang J, Wu Z, Ma X, Ai F, Xia H. Management of pediatric patients with irreducible atlantoaxial dislocation: transoral anterior release, reduction, and fixation. *J Neurosurg Pediatr.* (2019) 24:1–7. doi: 10.3171/2019.4.PEDS1928
- Jian FZ, Chen Z, Wrede KH, Samii M, Ling F. Direct posterior reduction and fixation for the treatment of basilar invagination with atlantoaxial dislocation. *Neurosurgery.* (2010) 66:678–87; discussion 687. doi: 10.1227/01.NEU.0000367632.45384.5A
- Lin L, Zhu M, Peng P, Zhang X, Zhou X, Li J. Patient-specific drill template for C2 transoral pedicle insertion in complete reduction of atlantoaxial dislocation: cadaveric efficacy and accuracy assessments. *J Orthop Surg Res.* (2019) 14:141. doi: 10.1186/s13018-019-1189-7
- Govindasamy R, Preethish-Kumar V, Gopal S, Rudrappa S. Is transoral surgery still a relevant procedure in atlantoaxial instability? *Int J Spine Surg.* (2020) 14:657–64. doi: 10.14444/7096
- Mingsheng T, Long G, Ping Y, Feng Y, Xiangsheng T, Haoning M, et al. New classification and its value evaluation for atlantoaxial dislocation. *Orthop Surg.* (2020) 12:1199–204. doi: 10.1111/os.12734
- Subin B, Liu JF, Marshall GJ, Huang HY, Ou JH, Xu GZ. Transoral anterior decompression and fusion of chronic irreducible atlantoaxial dislocation with spinal cord compression. *Spine.* (1995) 20:1233–40. doi: 10.1097/00007632-199506000-00004
- Bhango RS, Crockard HA. Transmaxillary anterior decompressions in patients with severe basilar impression. *Clin Orthop Relat Res.* (1999) 359:115–25. doi: 10.1097/00003086-199902000-00012
- Tang X, Wu X, Tan M, Yi P, Yang F, Hao Q. Endoscopic transnasal anterior release and posterior reduction without odontoidectomy for irreducible atlantoaxial dislocation. *J Orthop Surg Res.* (2019) 14:119. doi: 10.1186/s13018-019-1167-0
- Liu T, Li F, Xiong W, Du X, Fang Z, Shang H, et al. Video-assisted anterior transcervical approach for the reduction of irreducible atlantoaxial dislocation. *Spine.* (2010) 35:1495–501. doi: 10.1097/BRS.0b013e3181c4e048

## Conflict of interest

The authors declare that the research was conducted in the absence of any commercial or financial relationships that could be construed as a potential conflict of interest.

## Publisher's note

All claims expressed in this article are solely those of the authors and do not necessarily represent those of their affiliated organizations, or those of the publisher, the editors and the reviewers. Any product that may be evaluated in this article, or claim that may be made by its manufacturer, is not guaranteed or endorsed by the publisher.

- Dong C, Yang F, Wei H, Tan M. Anterior release without odontoidectomy for irreducible atlantoaxial dislocation: transoral or endoscopic transnasal? *Eur Spine J.* (2021) 30:507–16. doi: 10.1007/s00586-020-06527-z
- Yin QS, Li XS, Bai ZH, Mai XH, Xia H, Wu ZH, et al. An 11-year review of the TARP procedure in the treatment of atlantoaxial dislocation. *Spine.* (2016) 41:E1151–e1158. doi: 10.1097/BRS.0000000000001593
- Ai F, Yin Q, Wang Z, Xia H, Chang Y, Wu Z, et al. Applied anatomy of transoral atlantoaxial reduction plate internal fixation. *Spine.* (2006) 31:128–32. doi: 10.1097/01.brs.0000195159.04197.21
- Ma XY, Yin QS, Wu ZH, Xia H, Liu JF, Zhong SZ. Anatomic considerations for the pedicle screw placement in the first cervical vertebra. *Spine.* (2005) 30:1519–23. doi: 10.1097/01.brs.0000168546.17788.49
- Yin Q, Ai F, Zhang K, Chang Y, Xia H, Wu Z, et al. Irreducible anterior atlantoaxial dislocation: one-stage treatment with a transoral atlantoaxial reduction plate fixation and fusion. Report of 5 cases and review of the literature. *Spine.* (2005) 30:E375–81. doi: 10.1097/01.brs.0000168374.84757.d5
- Bransford RJ, Alton TB, Patel AR, Bellabarba C. Upper cervical spine trauma. *J Am Acad Orthop Surg.* (2014) 22:718–29. doi: 10.5435/JAAOS-22-11-718
- Srivastava SK, Aggarwal RA, Nemade PS, Bhosale SK. Single-stage anterior release and posterior instrumented fusion for irreducible atlantoaxial dislocation with basilar invagination. *Spine J.* (2016) 16:1–9. doi: 10.1016/j.spinee.2015.09.037
- Liu Z, Jian Q, Duan W, Guan J, Zhang C, Zhang B, et al. Atlantoaxial dislocation with bony fusion of C1/2 facet joints treated with posterior joint release, distraction and reduction. *Spine Surg Relat Res.* (2022) 6:175–80. doi: 10.22603/ssrr.2021-0058
- Tu Q, Chen H, Ma XY, Wang JH, Zhang K, Xu JZ, et al. Usefulness of a three-dimensional-printed model in the treatment of irreducible atlantoaxial dislocation with transoral atlantoaxial reduction plate. *Orthop Surg.* (2021) 13:799–811. doi: 10.1111/os.12961
- Salunke P, Sahoo SK, Deepak AN, Khandelwal NK. Redefining congenital atlantoaxial dislocation: objective assessment in each plane before and after operation. *World Neurosurg.* (2016) 95:156–64. doi: 10.1016/j.wneu.2016.07.097
- Chandra PS, Goyal N, Chauhan A, Ansari A, Sharma BS, Garg A. The severity of basilar invagination and atlantoaxial dislocation correlates with sagittal joint inclination, coronal joint inclination, and craniocervical tilt: a description of new indexes for the craniocervical junction. *Neurosurgery.* (2014) 10(Suppl 4):621–9; discussion 629–30. doi: 10.1227/NEU.0000000000000470
- Xiao B, Wu B, Rong T, Cui W, Sang D, Liu B. Clinical impact of 3-level anterior cervical decompression and fusion (ACDF) on the occipito-atlantoaxial complex: a retrospective study of patients who received a zero-profile anchored spacer versus cage-plate construct. *Eur Spine J.* (2021) 30:3656–65. doi: 10.1007/s00586-021-06974-2
- Yuan SL, Xu HM, Fu LC, Cao J, Yang JK, Xi YM. Sagittal atlantoaxial joint inclination and reduction Index values for diagnosis and treatment of irreducible atlantoaxial dislocation. *Indian J Orthop.* (2018) 52:190–5. doi: 10.4103/ortho.IJOrtho\_251\_16