



A Dissociation of the Acute Effects of Bupropion on Positive Emotional Processing and Reward Processing in Healthy Volunteers

Annabel E. L. Walsh^{1,2}, Nathan T. M. Huneke^{2,3}, Randi Brown², Michael Browning^{2,4}, Phil Cowen² and Catherine J. Harmer^{1,2*}

¹ NIHR Oxford Health Biomedical Research Centre, Warneford Hospital, Oxford, United Kingdom, ² Psychopharmacology and Emotion Research Laboratory, Department of Psychiatry, University of Oxford, Oxford, United Kingdom, ³ University Department of Psychiatry, University of Southampton, Southampton, United Kingdom, ⁴ Oxford Health NHS Foundation Trust, Warneford Hospital, Oxford, United Kingdom

OPEN ACCESS

Edited by:

Gianluca Serafini,
Ospedale San Martino (IRCCS), Italy

Reviewed by:

Célia Fourier,
University of Adelaide, Australia
Matthew James Knight,
University of Adelaide, Australia

*Correspondence:

Catherine J. Harmer
catherine.harmer@psych.ox.ac.uk

Specialty section:

This article was submitted to
Mood and Anxiety Disorders,
a section of the journal
Frontiers in Psychiatry

Received: 19 July 2018

Accepted: 13 September 2018

Published: 16 October 2018

Citation:

Walsh AEL, Huneke NTM, Brown R, Browning M, Cowen P and Harmer CJ (2018) A Dissociation of the Acute Effects of Bupropion on Positive Emotional Processing and Reward Processing in Healthy Volunteers. *Front. Psychiatry* 9:482. doi: 10.3389/fpsy.2018.00482

Background: Previous research indicates that antidepressants can restore the balance between negative and positive emotional processing early in treatment, indicating a role of this effect in later mood improvement. However, less is known about the effect of antidepressants on reward processing despite the potential relevance to the treatment of anhedonia. In this study, we investigated the effects of an acute dose of the atypical antidepressant (dual dopamine and noradrenaline reuptake inhibitor) bupropion on behavioral measures of emotional and reward processing in healthy volunteers.

Methods: Forty healthy participants were randomly allocated to double-blind intervention with either an acute dose of bupropion or placebo prior to performing the Emotional Test Battery (ETB) and a probabilistic instrumental learning task.

Results: Acute bupropion significantly increased the recognition of ambiguous faces as happy, decreased response bias toward sad faces and reduced attentional vigilance for fearful faces compared to placebo. Bupropion also reduced negative bias compared to placebo in the emotional recognition memory task (EMEM). There was no evidence that bupropion enhanced reward processing or learning. Instead, bupropion was associated with reduced likelihood to choose high-probability wins and increased score on a subjective measure of anhedonia.

Conclusions: Whilst acute bupropion decreases negative and increases positive emotional processing, it has an adverse effect on reward processing. There seems to be a dissociation of the acute effects of bupropion on positive emotional processing and reward processing, which may have clinical implications for anhedonia early in treatment.

Keywords: emotion, antidepressants, dopamine, reward, depression, anhedonia

INTRODUCTION

Patients suffering from major depressive disorder (MDD) display negative biases in emotional processing across a range of cognitive domains, including perception, attention, and memory (1–4). The neuropsychological theory of antidepressant action hypothesizes that the direct action of antidepressants is to decrease negative emotional processing and increase positive emotional processing early in treatment, prior to any mood improvement, indicating a role of this change in the therapeutic effect of the antidepressant (4–7). Indeed, acute or 7 day administration of the selective serotonin reuptake inhibitor citalopram or the noradrenaline reuptake inhibitor reboxetine was found to increase the recall of positive self-referent words and the perception of ambiguous faces as happy in both healthy volunteers (8–10) and MDD patients (11) in the absence of any changes in mood.

The majority of research on the effects of antidepressants has been conducted using selective serotonin and/or noradrenaline reuptake inhibitors (SSRIs/SNRIs) and several questions remain. Firstly, MDD is not only characterized by low mood but also a loss of interest or pleasure in previously enjoyed activities, known as anhedonia. It is becoming clearer that whilst SSRIs or SNRIs reduce negative biases in emotional processing to improve low mood, they do not fully correct the experience of anhedonia (12) and may actually exacerbate reward deficits (13). Pre-clinical, physiological studies evidence a role of dopamine in reward (14, 15). Therefore, it has been hypothesized that anhedonia and abnormal reward-based decision making in probabilistic instrumental learning tasks observed in MDD (16–18) involve changes in the dopamine system. Indeed, an acute dose of a dopaminergic enhancing drug (L-DOPA) has previously been found to increase the likelihood of choosing high-probability wins during a probabilistic instrumental learning task compared to a dopamine antagonist (haloperidol) in healthy volunteers (19). It has therefore been suggested that atypical, dopaminergic antidepressants may act on such aberrant reward processing and be better suited to treat anhedonia (12).

It is unclear whether positive emotional processing and reward processing are different expressions of the same underlying system (20), or whether they are independent processes in the manifestation of the symptom clusters in MDD. As such, emotional and reward processing may be either similarly or differentially affected by antidepressants with an effect on dopamine function such as bupropion, a dual dopamine and noradrenaline reuptake inhibitor.

Therefore, here we investigated the acute effects of bupropion compared to placebo on commonly used behavioral measures of emotional and reward processing in healthy volunteers. Specifically, we aimed to investigate whether bupropion has similar effects to SSRIs and/or SNRIs acting to reduce negative biases in emotional processing, or has more specific effects on positive emotional or reward processing. Since bupropion increases dopamine function, we hypothesized that it would specifically increase positive emotional processing and reward sensitivity in a probabilistic instrumental learning task.

MATERIALS AND METHODS

The authors assert that all procedures contributing to this work comply with the ethical standards of the relevant national and institutional committees on human experimentation and with the Helsinki Declaration of 1975, as revised in 2008. All participants provided written informed consent.

Participant Recruitment, Screening, and Randomization

A reverse power calculation using the effect sizes observed in preceding studies of other antidepressants [e.g., (8, 9)] indicated a sample size of 20 participants per treatment group would be sufficient to detect a significant difference between the two treatment groups with a power of 0.95. Therefore, a total of 40 healthy participants were recruited and deemed to be free from either current or past history of any Axis 1 DSM-IV psychiatric illness via assessment with the Structured Clinical Interview (SCID) for DSM-IV (21). They also had no physical medical conditions, were free of any medications or drugs that could impact upon the safety or effect of bupropion for at least 3 weeks and naive to the behavioral tasks.

Participants were randomly allocated to double-blind intervention with either an acute dose (150 mg) of sustained release bupropion or placebo. Administration of the treatment in identical capsules by an independent member of staff ensured that both the participant and investigator remained blind to the treatment received. Participants were stratified for gender and matched for age and National Adult Reading Test (NART)-derived verbal IQ (22). Note that an additional group of 20 participants were also recruited and randomized to a no treatment group to assess the influence of the placebo effect, the results of which are reported in Huneke et al. (23); however, all hypotheses for both studies were made a priori.

A 3 h wait period followed treatment administration since this is the t_{\max} of the sustained release formulation of bupropion and allowed for testing at maximum plasma concentration (24). Participants then completed the Emotional Test Battery (ETB) and a probabilistic instrumental learning task to assess emotional and reward processing. Subjective mood was also assessed via completion of a variety of questionnaires before and after treatment administration and behavioral assessment. Firstly, the Hamilton Rating Scale for Depression (HAM-D) (25) was administered via a semi-structured interview with a trained experimenter. The rest of the questionnaires were self-report questionnaires completed on a computer and included the Adult Eysenck Personality Questionnaire (EPQ) (26), the Full Mood and Anxiety Symptom Questionnaire (MASQ), the Positive and Negative Affect Schedule (PANAS) (27), the Befindlichkeits Scale (BFS) (28), the Snaith-Hamilton Pleasure Scale (SHAPS) (29), and a side-effects questionnaire listing the side-effects most common for bupropion. The SHAPS comprises 14 items with each item describing a pleasurable situation covering one of four domains of pleasure: interests / pastimes, social interaction, sensory experience and food/drink, with a higher score indicating higher anhedonia. After treatment administration and behavioral

assessment, participants repeated the PANAS, BFS, SHAPS, and side-effects questionnaires.

Emotional Test Battery

The ETB (P1vital, Oxford, UK) is designed to assess the processing of a variety of affectively valenced stimuli and comprises five validated, computerized cognitive tasks named as follows: Facial Expression Recognition Task (FERT), Emotional Categorization Task (ECAT), Facial Dot-Probe Task (FDOT), Emotional Recall Task (EREC), and Emotional Recognition Memory Task (EMEM). These tasks have previously been described in full (11, 30). “In brief, the FERT comprises a series of facial expressions associated with six basic emotions: anger, disgust, fear, happy, sad and surprise at a range of different intensity levels and participants are required to identify the emotion of the face. Signal detection theory is used to provide estimates of target sensitivity (d') and beta. The ECAT comprises a series of positively and negatively valenced self-referent words and participants are required to indicate whether they would like or dislike to be referred to as each word. In the FDOT, the attentional vigilance to happy or fearful faces can be determined from participants' response latency to indicate the alignment of a dot probe appearing in the place of one of the faces. The EREC is a surprise free recall task during which participants are required to remember as many of the positively and negatively valenced self-referent words from the ECAT as they can in 2 min. Finally, the EMEM comprises self-referent words from the ECAT and previously unseen self-referent words that participants are required to classify as familiar or novel” (30). Further details for each task are provided in the **Supplementary Material**.

Probabilistic Instrumental Learning Task

The probabilistic instrumental learning task was a modified version of that described in Pessiglione et al. (19) and has previously been described in full (30). “Task stimuli consisted of two pairs of symbols with one pair associated with win outcomes (win £1 or no change) and the other associated with loss outcomes (lose £1 or no change). Each symbol in the pair corresponded to reciprocal probabilities (0.7 or 0.3) of the associated outcomes occurring.

Participants first performed a shortened, 10 trial familiarization version of the task. Participants then performed two 60 trial runs (30 win trials and 30 loss trials) with each run containing a different set of 4 symbols. Participants began the task with £5. On each trial, participants were randomly presented with a pair of symbols on a display screen for 4,000 ms, with each symbol randomly positioned either to the left or the right of a central fixation cross. Participants were required to choose between the two symbols in order to maximize their winnings. Once a choice was made, outcome feedback was provided. Participants should use the outcome feedback to gradually learn the symbol-outcome associations over time, such that they consistently choose the symbol with the high-probability win and avoid the symbol with the high-probability loss. Outcome measures were end total, amount won and amount lost, choice frequency and reaction time averaged across the two runs.”

Statistics

Reaction times for all tasks (with the exception of the EREC where a 2 min time limit is imposed) were trimmed at the participant level: reaction times above 3 standard deviations from the mean or below 200 ms were excluded prior to calculating the mean. Data for all tasks was normally distributed allowing the use of parametric statistical tests.

Data from each task of the ETB was analyzed using a repeated measures analysis of variance (ANOVA) with treatment group (bupropion, placebo) as the between-subject factor and different within-subject factors depending on the task (FERT: face emotion; ECAT/EREC/EMEM: word valence; FDOT: face emotion, masking). Significant interactions were followed up with independent samples t -tests between the two treatment groups. Since previous studies have found both citalopram and reboxetine to increase the perception of ambiguous faces as happy in both healthy volunteers (8–10) and MDD patients (11), a planned comparison of the recognition of happy faces between groups was completed for the FERT.

For the probabilistic instrumental learning task, participants totaling less than the initial £5 were assumed to not have understood the task and were excluded (6 in total: 3 from the bupropion group and 3 from the placebo group). Data was then averaged across the two runs and analyzed using independent samples t -tests between the two treatment groups.

RESULTS

Participant Demographics and Characterization

There were no significant differences between treatment groups with regards to gender, age, NART-derived verbal IQ and baseline scores on the HAM-D and self-report questionnaires (**Table S1**).

Changes in Subjective Mood

There were no significant main effects of treatment group or time by treatment group interactions for any of the questionnaires measuring subjective mood, apart from the SHAPS. A time by treatment group interaction was observed for the SHAPS [$F_{(1,38)} = 5.95, p < 0.05$] with a significant difference in the change in SHAPS score over time between the placebo and bupropion groups [$t_{(38)} = -2.44, p < 0.05$]. Paired t -tests found SHAPS score to decrease in the placebo group, although not significantly ($-1.25 \pm 3.77, p = 0.15$), but increase in the bupropion group with a trend toward significance ($+1.40 \pm 3.17, p = 0.06$). Side-effect ratings were very low with the majority of participants rating that side-effects were absent (1.00) pre- and post-treatment (**Table S2**).

Acute Effects of Bupropion on Emotional Processing

Facial Expression Recognition Task

During the FERT, participants are required to recognize emotional facial expressions. Signal detection theory is used to provide estimates of target sensitivity (d') and beta. For % accuracy in recognizing emotional facial expressions, there was no significant main effect of treatment group [$F_{(1,38)} = 0.97, p =$

0.33] or face emotion by treatment group interaction [$F_{(5, 190)} = 0.89, p = 0.49$]. Correspondingly, there was also no significant main effect of treatment group [$F_{(1, 38)} = 1.00, p = 0.32$] or face emotion by treatment group interaction [$F_{(5, 190)} = 0.43, p = 0.83$] for d' . In a planned comparison of the recognition of happy faces between groups, the bupropion group were found to show significantly higher % accuracy [$t_{(38)} = -2.33, p < 0.05$] and d' [$t_{(38)} = -2.18, p < 0.05$] for happy faces than the placebo group (**Figure 1B**). Furthermore, a significant intensity of face emotion by treatment group interaction was found for the % accuracy for recognizing happy faces [$F_{(9, 342)} = 3.14, p < 0.01$], with the bupropion group displaying significantly higher % accuracy for recognizing happy faces at lower intensities than the placebo group [30% happiness intensity: $t_{(38)} = -2.45, p < 0.05$; 40% happiness intensity: $t_{(38)} = -2.73, p < 0.01$] (**Figure 1A**). There was a trend toward significance for a face emotion by treatment group interaction for beta [$F_{(5, 185)} = 2.17, p = 0.06$] with independent t -tests finding an effect of treatment group on the beta for sad faces only. The bupropion group displayed a significantly higher beta value for sad faces compared to the placebo group [$t_{(38)} = -2.32, p < 0.05$], indicating bupropion may induce a response bias away from sad faces (**Figure 1C**).

There was no significant main effect of treatment group [$F_{(1, 37)} = 0.01, p = 0.94$] or face emotion by treatment group interaction [$F_{(5, 185)} = 0.35, p = 0.88$] for reaction time.

Emotional Categorization Task

During the ECAT, participants are required indicate as quickly as they can whether they would like or dislike to be referred to as various positively and negatively valenced words. There was no significant main effect of treatment group [$F_{(1, 38)} = 3.11, p = 0.09$] or word valence by treatment group interaction [$F_{(1, 38)} = 0.01, p = 0.91$] for reaction time.

Facial Dot-Probe Task

In the FDOT, the attentional vigilance to happy or fearful faces can be determined from participants' response latency to indicate the alignment of a dot probe appearing in the place of one of the faces. There was a significant face emotion by masking by treatment group interaction for attentional vigilance [$F_{(1, 38)} = 5.45, p < 0.05$]. This was found to be driven by a significant face emotion by treatment group interaction for unmasked faces [$F_{(1, 38)} = 4.30, p < 0.05$], with the bupropion group displaying significantly reduced explicit attentional vigilance for unmasked fearful faces compared to the placebo group [$t_{(38)} = 2.00, p < 0.05$] (**Figure 2**).

Emotional Recall Task

The EREC is a surprise free recall task during which participants are required to remember as many of the positively and negatively valenced self-referent words from the ECAT as they can in 2 min. There was no significant main effect of treatment group or word valence by treatment group interaction for both number of words correctly [$F_{(1, 38)} = 1.22, p = 0.28$; $F_{(1, 38)} = 2.00, p = 0.17$] and falsely [$F_{(1, 38)} = 0.17, p = 0.68$; $F_{(1, 38)} = 0.38, p = 0.54$] recalled.

Emotional Recognition Memory Task

The EMEM comprises the words from the ECAT and previously unseen words that participants are required to classify as familiar or novel. A significant word valence by treatment group interaction was found for both novel words misclassified as familiar [$F_{(1, 38)} = 10.24, p < 0.01$] and familiar words misclassified as novel [$F_{(1, 38)} = 7.34, p < 0.01$]. **Figure 3A** suggests that bupropion increases the familiarity of positive words and decreases the familiarity of negative words. When considering just false alarms (novel words misclassified as familiar), there was no significant difference between groups for positive words [$t_{(38)} = 0.65, p = 0.52$] but the bupropion group displayed significantly increased beta for negative words compared to the placebo group [$t_{(38)} = -2.25, p < 0.05$] (**Figure 3B**).

Acute Effects of Bupropion on Reward Processing

Independent samples t -tests did not find a significant difference between treatment groups for the total monetary amount at the end of the task [$t_{(38)} = -0.51, p = 0.61$], the amount won [$t_{(38)} = 0.20, p = 0.85$] or the amount lost [$t_{(38)} = -1.18, p = 0.24$] (**Figure 4A**). A repeated measures ANOVA did find a task condition by treatment group interaction for reaction time [$F_{(1, 38)} = 5.73, p < 0.05$], with the bupropion group displaying slower reaction times in the win vs. loss condition compared to the placebo group (**Figure 4B**).

In order to provide more temporal information about reward learning differences between treatment groups, learning curves were produced for each treatment group depicting trial-by-trial the proportion of participants that chose the correct symbol in the win condition, associated with high-probability win and the incorrect symbol in the loss condition, associated with high-probability loss (**Figure 5A**). Both treatment groups learnt to choose the high-probability win and avoid the high-probability loss by about trial 10. To assess reward sensitivity after learning, the proportion of participants choosing the correct symbol in the win and loss conditions was averaged over the remaining 20 trials of the task where learning had plateaued (31). The bupropion group was found to be significantly less likely to choose the correct symbol in the win condition compared to placebo [$t_{(38)} = 3.00, p < 0.01$] (**Figure 5B**).

DISCUSSION

The present study aimed to investigate whether bupropion has similar effects to SSRIs and/or SNRIs acting to reduce negative biases in emotional processing, or has more specific effects on positive emotional or reward processing. Since bupropion increased dopamine function, we hypothesized that it would specifically increase positive emotional processing and reward sensitivity on a probabilistic instrumental learning task similarly to other dopamine acting drugs (19). An acute dose of bupropion significantly increased the recognition of ambiguous faces as happy, decreased response bias toward sad faces and reduced attentional vigilance for fearful faces compared to placebo. Bupropion also reduced negative bias compared to placebo in the (EMEM). There was no evidence that bupropion enhanced

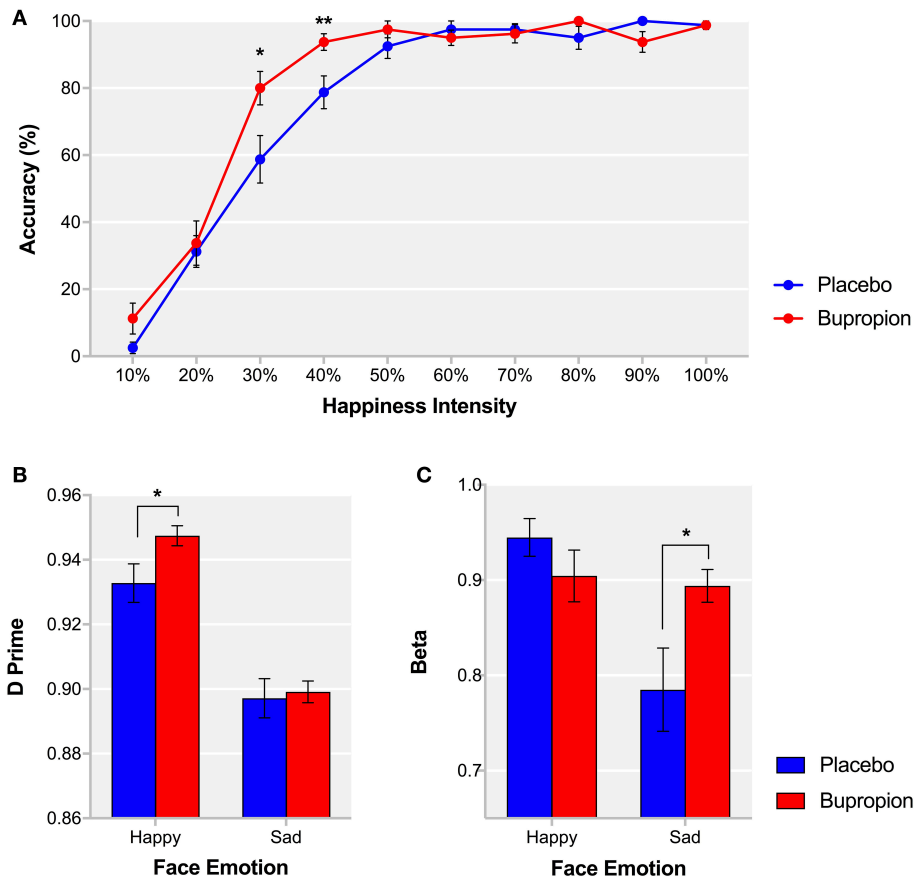


FIGURE 1 | FERT (A) % accuracy for each happiness intensity and signal detection derived **(B)** d' and **(C)** beta for happy and sad faces for each treatment group. Values are reported as means \pm SEM. Asterisks denote the degree of significance obtained for planned comparisons ($*p < 0.05$, $**p < 0.01$).

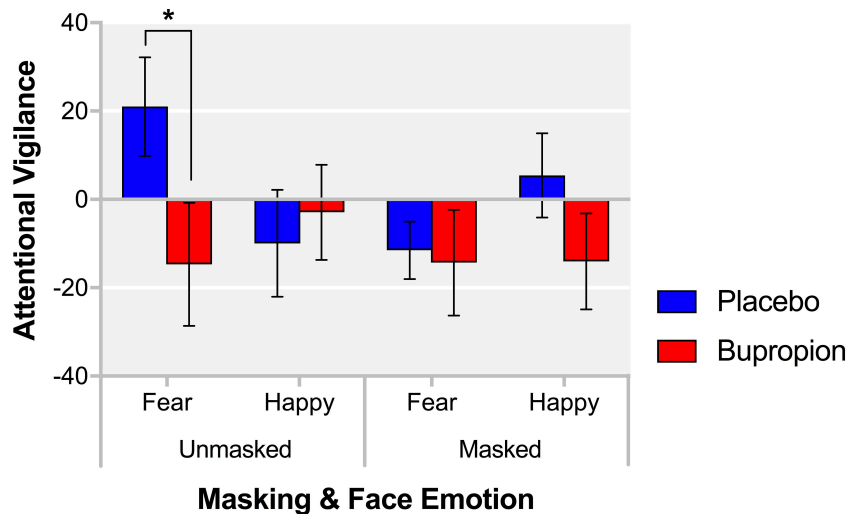
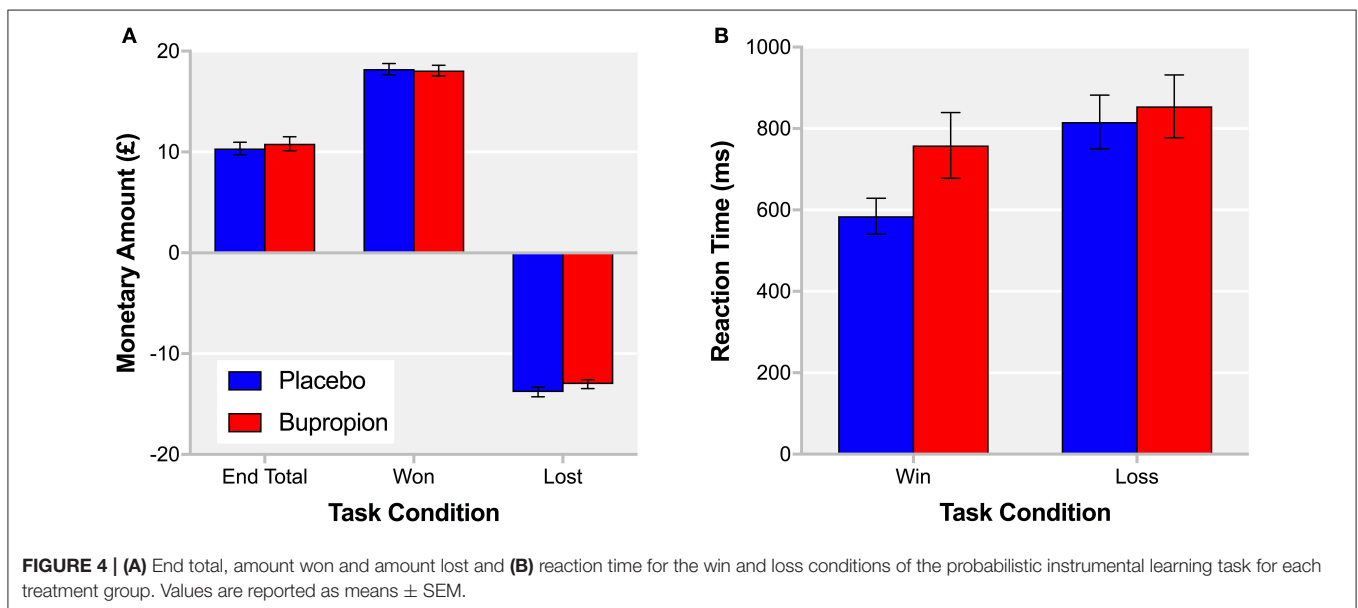
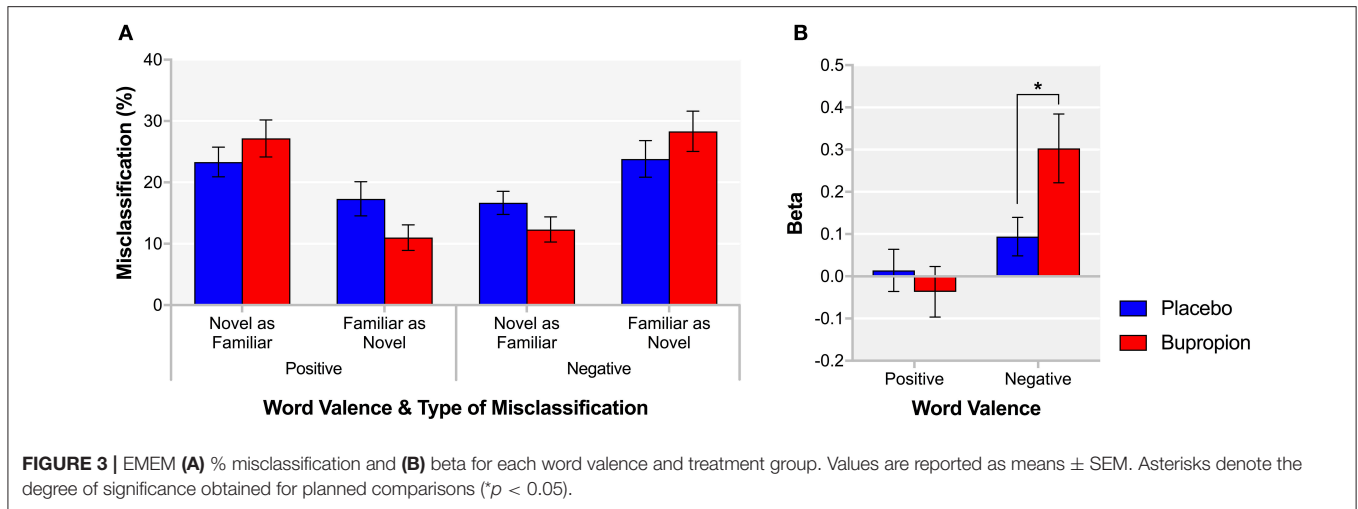


FIGURE 2 | FDOT attentional vigilance for each masking and face emotion condition for each treatment group. Values are reported as means \pm SEM. Asterisks denote the degree of significance obtained for planned comparisons ($*p < 0.05$).



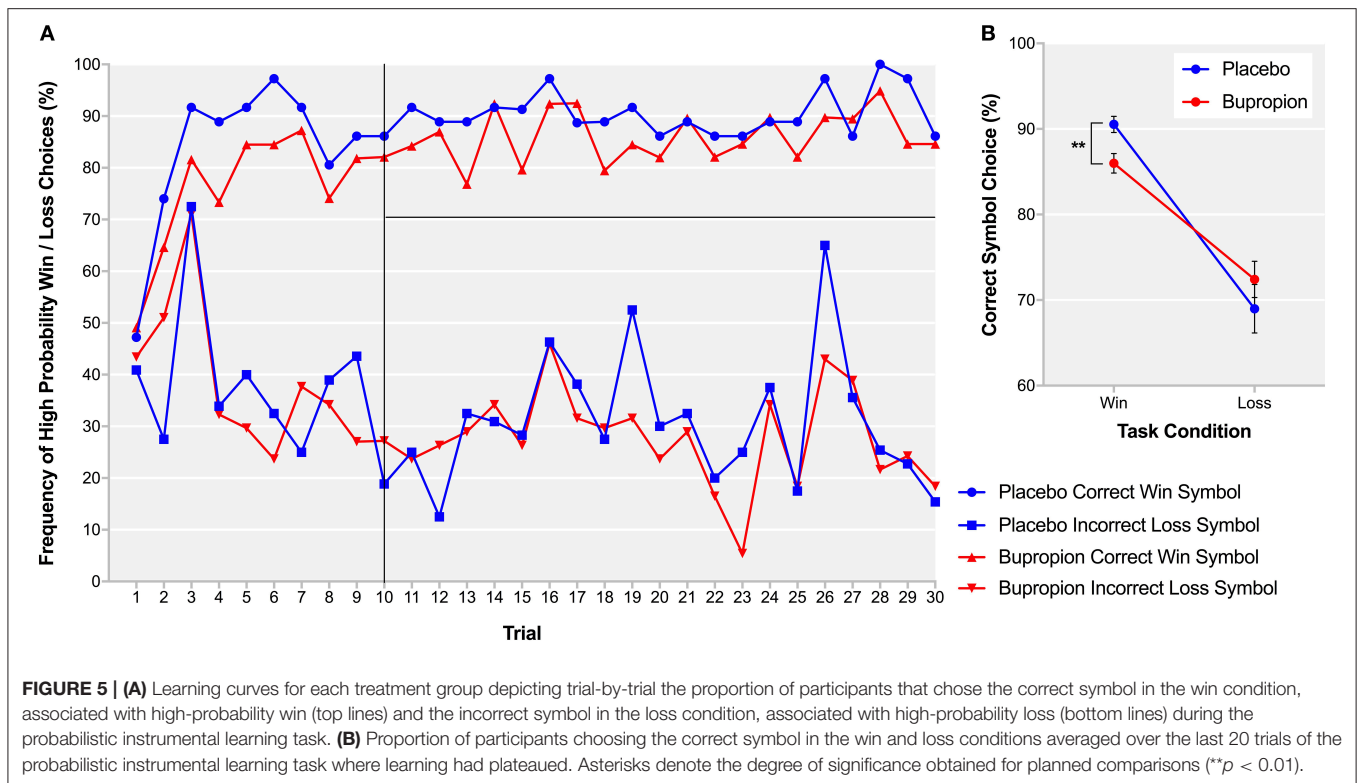
reward processing or learning; rather the drug treatment was associated with reduced sensitivity to high-probability wins and increase in score on a subjective measure of anhedonia compared to placebo.

Emotional Processing

Whilst an acute dose of bupropion did produce a slight increase in positive emotional processing, with an increase in the recognition of ambiguous faces as happy, it was actually found to have stronger effects on decreasing negative emotional processing, with a decrease in the response bias for sad faces, attentional vigilance to fearful faces and negative bias in emotional recognition compared to placebo. These effects on emotional processing are similar to those seen with SSRIs and/or SNRIs (8–10) and have been hypothesized to be an early mechanism of antidepressant drug action; by reversing

negative biases in depression and reducing the influence of this maintaining factor (4–7).

The profile of effects overlaps with the effects of SNRIs to a greater extent than SSRIs (6). Specifically, in addition to the positive biasing effect, SSRIs paradoxically increase fear processing early in treatment. For example, an acute dose of the SSRI citalopram was found to increase the startle response (32) and the recognition of fearful faces (33). However, an acute dose of the SNRI reboxetine was not found to have any effect on fear processing (9), similarly to bupropion in the present study. Reboxetine has also been found to increase the recognition of happy faces in the FERT and alter the balance of memory for self-referent words, causing an increase in recall of positive words or decrease in the recall of negative words (9–11). Whilst reboxetine acts primarily as an SNRI, some have reported that it also increases dopaminergic activity in the frontal cortex (34, 35). Likewise, although dopamine reuptake inhibition is the



mechanism of action most commonly attributed to bupropion, the exact neuropharmacological actions of bupropion remain elusive, due to different actions *in vitro* vs. *in vivo* (36, 37). *In vitro*, bupropion is more potent at inhibiting dopamine than noradrenaline reuptake (IC_{50} of 2.0 and 5.0, respectively) (36) but the inhibition of dopamine reuptake itself is not particularly robust and was not thought to have pharmacological relevance (38). In contrast, *in vivo*, an acute dose of bupropion has been found to affect the firing rate of noradrenaline neurons in the locus coeruleus of the rat at doses more similar to those required for antidepressant-like activity in animal models (39, 40). It seems that the effects of bupropion on emotional processing may be mediated via noradrenaline and/or dopamine and further research is required in this area.

Reward Processing

It has previously been shown that administration of drugs with dopaminergic enhancing activity can improve performance on probabilistic instrumental learning tasks in healthy volunteers. For example, administration of L-DOPA, the metabolic precursor of dopamine, was found to significantly increase the likelihood of choosing the stimulus associated with high-probability win and subsequently the amount of money won during a probabilistic instrumental learning task, compared to the dopamine receptor antagonist haloperidol (19). Therefore, it could be expected that an acute dose of bupropion with dopaminergic enhancing activity would also improve performance on a probabilistic instrumental learning task in healthy volunteers; however, this was not found to be the case. Instead, bupropion reduced

the likelihood of choosing the stimulus associated with high-probability win. Such a profile is similar to that seen in depression itself (16–18) and bupropion may therefore be predicted to worsen anhedonia at least early in treatment. However, care must be taken when interpreting these results obtained in a sample of healthy volunteers with regards to depression. Key differences in reward and emotional processing between healthy and depressed individuals are likely to have a large impact upon the effects of bupropion.

Indeed, in a healthy system with roof levels of dopamine, acute inhibition of the reuptake of dopamine could lead to a paradoxical decrease in cell firing via activation of the presynaptic autoreceptors (41). It has previously been shown, at least in rats, that an acute dose of bupropion induced an autoreceptor-mediated reduction in the firing of brain stem dopamine neurons (40, 42). Subsequent down-regulation of the autoreceptors may be required to reverse these effects, allow an increase in the levels of dopamine in the synapse and improve reward processing in healthy participants (43).

Bupropion could also differentially affect the phasic vs. tonic firing of dopamine neurons. Phasic firing refers to a transient burst of firing following presynaptic input in response to a stimulus and plays a crucial role in associative reward learning (44). Tonic firing refers to sustained firing at a constant frequency regulated by frontal activity in order to set the background level of dopamine and subsequently the responsiveness of the dopaminergic system (44). Administration of bupropion may act to increase tonic levels of dopamine but as a result decrease the responsiveness of the dopaminergic system such that phasic firing is actually reduced. This may reduce reward discriminability

such that the participant believes the neutral and win outcomes are of a similar magnitude (45). As such participants fail to or are slower to learn the association of a particular stimulus with high-probability win, thereby disrupting instrumental reward learning.

SSRIs have also been shown to reduce reward processing, for example, short-term treatment with the SSRI citalopram, but not the SNRI reboxetine, reduced ventral striatal, and ventral medial/orbitofrontal cortex activation in response to chocolate reward (13). However, more recent research suggests that longer-term treatment with SSRIs has a beneficial effect on reward processing, with 2 week citalopram treatment increasing reward learning and the effort applied to obtain rewards (46). Similarly, chronic administration of bupropion may be required for the beneficial effects on reward processing, in correspondence with the delay in the action of antidepressants to produce a clinical important therapeutic effect. Further research into the longer-term effects of bupropion on reward processing in MDD patients is required.

The bupropion group also displayed a slight increase in SHAPS score, and therefore, anhedonia, compared to placebo over time. The slight increase in anhedonia may be associated with acute adverse effects of bupropion on reward processing and may have clinical implications when starting treatment with bupropion. With the exception of the SHAPS, all of these effects occurred in the absence of any changes in subjective mood. This provides evidence that antidepressants acting on a range of neurotransmitters, including serotonin, noradrenaline and dopamine, all have early effects on the processing of affective stimuli prior to mood improvement. Our results therefore further support the neuropsychological theory of antidepressant action.

CONCLUSION

Despite its alternative mechanism of action involving dopamine, an acute dose of bupropion appears to have a similar profile of effects on emotional and reward processing to other antidepressants. Acute bupropion acts to restore the balance between negative and positive emotional processing but with adverse effects on reward processing and anhedonia, at least in healthy participants. The beneficial effects of bupropion on reward processing may only occur in MDD individuals or following repeated administration. As such, there is a dissociation of the acute effects of bupropion on positive emotional processing and reward processing in healthy volunteers indicating they may be different processes in the manifestation of the symptom clusters in MDD; however, the roles of different

neurotransmitters, how they interact and their downstream effects needs to be unraveled. If the adverse effects of acute bupropion on reward processing are found to occur in MDD individuals, the use of bupropion to specifically target anhedonia should be monitored early in treatment for any initial worsening of anhedonic symptoms.

ETHICS STATEMENT

This study was carried out in accordance with the recommendations of the Central University Research Ethics Committee (CUREC, University of Oxford) with written informed consent from all subjects. All subjects gave written informed consent in accordance with the Declaration of Helsinki. The protocol was approved by the Central University Research Ethics Committee.

AUTHOR CONTRIBUTIONS

AW, RB, and NH recruited volunteers for this study and analyzed the data; CH, MB, and PC were involved in study and task design and oversaw the running and analysis of the study. AW drafted the first draft of the paper and all authors revised this draft.

FUNDING

This work was funded by the Medical Research Council (grant number: HQRWNT0) and supported by the NIHR Oxford Health Biomedical Research Centre. The views expressed are those of the authors and not necessarily those of the NHS, the NIHR, or the Department of Health. Preparation of the article was supported by funding awarded to AW by the NIHR Oxford Health Biomedical Research Centre. CH has received consultancy fees from P1vital, Servier, and Lundbeck. She is director of Oxford Psychologists Ltd. and holds shares in the same company. She has received grant income from Lundbeck, Servier, Sunovion, Johnson and Johnson and UCB. PC has received consultancy fees from Lundbeck. MB is employed part time by P1vital Ltd. and has received travel expenses from Lundbeck.

SUPPLEMENTARY MATERIAL

The Supplementary Material for this article can be found online at: <https://www.frontiersin.org/articles/10.3389/fpsy.2018.00482/full#supplementary-material>

REFERENCES

- Mathews A, MacLeod C. Cognitive vulnerability to emotional disorders. *Ann Rev Clin Psychol.* (2005) 1:167–95. doi: 10.1146/annurev.clinpsy.1.102803.143916
- Leppanen JM. Emotional information processing in mood disorders: a review of behavioral and neuroimaging findings. *Curr Opin Psychiatry* (2006) 19:34–9. doi: 10.1097/01.yco.0000191500.46411.00
- Elliott R, Zahn R, Deakin JF, Anderson IM. Affective cognition and its disruption in mood disorders. *Neuropsychopharmacology* (2011) 36:153–82. doi: 10.1038/npp.2010.77
- Roiser JP, Elliott R, Sahakian BJ. Cognitive mechanisms of treatment in depression. *Neuropsychopharmacology* (2012) 37:117–36. doi: 10.1038/npp.2011.183
- Harmer CJ, Goodwin GM, Cowen PJ. Why do antidepressants take so long to work? A cognitive neuropsychological model of antidepressant drug action. *Br J Psychiatry* (2009) 195:102–8. doi: 10.1192/bjp.bp.108.051193
- Pringle A, Browning M, Cowen PJ, Harmer CJ. A cognitive neuropsychological model of antidepressant drug action. *Prog Neuropsychopharmacol Biol Psychiatry* (2011) 35:1586–92. doi: 10.1016/j.pnpbp.2010.07.022

7. Harmer CJ, Cowen PJ. It's the way that you look at it—a cognitive neuropsychological account of SSRI action in depression. *Philos Trans R Soc B Biol Sci.* (2013) 368:20120407. doi: 10.1098/rstb.2012.0407
8. Harmer CJ, Bhagwagar Z, Perrett DI, Vollm BA, Cowen PJ, Goodwin GM. Acute SSRI administration affects the processing of social cues in healthy volunteers. *Neuropsychopharmacology* (2003) 28:148–52. doi: 10.1038/sj.npp.1300004
9. Harmer CJ, Hill SA, Taylor MJ, Cowen PJ, Goodwin GM. Toward a neuropsychological theory of antidepressant drug action: increase in positive emotional bias after potentiation of norepinephrine activity. *Am J Psychiatry* (2003) 160:990–2. doi: 10.1176/appi.ajp.160.5.990
10. Harmer CJ, Shelley NC, Cowen PJ, Goodwin GM. Increased positive versus negative affective perception and memory in healthy volunteers following selective serotonin and norepinephrine reuptake inhibition. *Am J Psychiatry* (2004) 161:1256–63. doi: 10.1176/appi.ajp.161.7.1256
11. Harmer CJ, O'Sullivan U, Favaron E, Massey-Chase R, Ayres R, Reinecke A, et al. Effect of acute antidepressant administration on negative affective bias in depressed patients. *Am J Psychiatry* (2009) 166:1178–84. doi: 10.1176/appi.ajp.2009.09020149
12. Nutt D, Demyttenaere K, Janka Z, Aarre T, Bourin M, Canonico PL, et al. The other face of depression, reduced positive affect: the role of catecholamines in causation and cure. *J Psychopharmacology* (2007) 21:461–71. doi: 10.1177/0269881106069938
13. McCabe C, Mishor Z, Cowen PJ, Harmer CJ. Diminished neural processing of aversive and rewarding stimuli during selective serotonin reuptake inhibitor treatment. *Biol Psychiatry* (2010) 67:439–45. doi: 10.1016/j.biopsych.2009.11.001
14. Schultz W, Dayan P, Montague PR. A neural substrate of prediction and reward. *Science* (1997) 275:1593–9. doi: 10.1126/science.275.5306.1593
15. Everitt BJ, Robbins TW. Neural systems of reinforcement for drug addiction: from actions to habits to compulsion. *Nat Neurosci.* (2005) 8:1481–9. doi: 10.1038/nn1579
16. Henriques JB, Davidson RJ. Decreased responsiveness to reward in depression. *Cogn Emot.* (2000) 14:711–24. doi: 10.1080/02699930050117684
17. Pizzagalli DA, Iosifescu D, Hallett LA, Ratner KG, Fava M. Reduced hedonic capacity in major depressive disorder: evidence from a probabilistic reward task. *J Psychiatr Res.* (2008) 43:76–87. doi: 10.1016/j.jpsychires.2008.03.001
18. Vrieze E, Pizzagalli DA, Demyttenaere K, Hompes T, Sienaert P, de Boer P, et al. Reduced reward learning predicts outcome in major depressive disorder. *Biol Psychiatry* (2013) 73:639–45. doi: 10.1016/j.biopsych.2012.10.014
19. Pessiglione M, Seymour B, Flandin G, Dolan RJ, Frith CD. Dopamine-dependent prediction errors underpin reward-seeking behaviour in humans. *Nature* (2006) 442:1042–5. doi: 10.1038/nature05051
20. Kranz GS, Kasper S, Lanzenberger R. Reward and the serotonergic system. *Neuroscience* (2010) 166:1023–35. doi: 10.1016/j.neuroscience.2010.01.036
21. First MB. *User's Guide for the Structured Clinical Interview for DSM-IV Axis I Disorders: SCID-I Clinician Version.* Washington, DC: American Psychiatric Press (1997).
22. Nelson HE, Willison J. National adult reading test (NART). 2nd ed, Hazel, E. Nelson with Jonathan Willison. 1991, NFER-Nelson. *Int J Geriatr Psychiatry Banner* (1991) 7:533. doi: 10.1002/gps.930070713
23. Huneke NT, Walsh AE, Brown R, Browning M, Harmer C. No evidence for an acute placebo effect on emotional processing in healthy volunteers. *J Psychopharmacol.* (2017) 31:1578–87. doi: 10.1177/0269881117739552
24. Jefferson JW, Pradko JF, Muir KT. Bupropion for major depressive disorder: Pharmacokinetic and formulation considerations. *Clin Ther.* (2005) 27:1685–95. doi: 10.1016/j.clinthera.2005.11.011
25. Hamilton M. A rating scale for depression. *J Neurol Neurosurg Psychiatry* (1960) 23:56–62. doi: 10.1136/jnnp.23.1.56
26. Eysenck HJ. *Manual of the Eysenck Personality Questionnaire (Junior and Adult).* London, UK: Hodder and Stoughton (1975).
27. Watson D, Clark LA, Tellegen A. Development and validation of brief measures of positive and negative affect: the PANAS scales. *J Pers Soc Psychol.* (1988) 54:1063–70. doi: 10.1037/0022-3514.54.6.1063
28. Von Zerssen D, Petermann F. *Bf-SR – The Befindlichkeits Scale – Revised.* Göttingen: Hogrefe (2011).
29. Snaith RP, Hamilton M, Morley S, Humayan A, Hargreaves D, Trigwell P. A scale for the assessment of hedonic tone the Snaith-Hamilton Pleasure Scale. *Br J Psychiatry* (1995) 167:99–103. doi: 10.1192/bjp.167.1.99
30. Walsh AEL, Browning M, Drevets WC, Furey M, Harmer CJ. Dissociable temporal effects of bupropion on behavioural measures of emotional and reward processing in depression. *Philos Trans R Soc Lond B Biol Sci.* (2018) 373:20170030. doi: 10.1098/rstb.2017.0030
31. Harrison NA, Voon V, Cercignani M, Cooper EA, Pessiglione M, Critchley HD. A neurocomputational account of how inflammation enhances sensitivity to punishments versus rewards. *Biol Psychiatry* (2016) 80:73–81. doi: 10.1016/j.biopsych.2015.07.018
32. Grillon C, Levenson J, Pine DS. A single dose of the selective serotonin reuptake inhibitor citalopram exacerbates anxiety in humans: a fear-potentiated startle study. *Neuropsychopharmacology* (2007) 32:225–231. doi: 10.1038/sj.npp.1301204
33. Browning M, Reid C, Cowen PJ, Goodwin GM, Harmer CJ. A single dose of citalopram increases fear recognition in healthy subjects. *J Psychopharmacol.* (2007) 21:684–90. doi: 10.1177/0269881106074062
34. Linner L, Endersz H, Ohman D, Bengtsson F, Schalling M, Svensson TH. Reboxetine modulates the firing pattern of dopamine cells in the ventral tegmental area and selectively increases dopamine availability in the prefrontal cortex. *J Pharmacol Exp Ther.* (2001) 297:540–6.
35. Page ME, Lucki I. Effects of acute and chronic reboxetine treatment on stress-induced monoamine efflux in the rat frontal cortex. *Neuropsychopharmacology* (2002) 27:237–47. doi: 10.1016/S0893-133X(02)00301-9
36. Horst WD, Preskorn SH. Mechanisms of action and clinical characteristics of three atypical antidepressants: venlafaxine, nefazodone, bupropion. *J Affect Disord.* (1998) 51:237–54. doi: 10.1016/S0165-0327(98)00222-5
37. Stahl SM, Pradko JF, Haight BR, Modell JG, Rockett CB, Learned-Coughlin S. A review of the neuropharmacology of bupropion, a dual norepinephrine and dopamine reuptake inhibitor. *Prim Care Companion J Clin Psychiatry* (2004) 6:159–66. doi: 10.4088/PCC.v06n0403
38. Ferris RM, Cooper BR, Maxwell RA. Studies of bupropion's mechanism of antidepressant activity. *J Clin Psychiatry* (1983) 44(Pt 2):74–8.
39. Cooper BR, Wang CM, Cox RF, Norton R, Shea V, Ferris RM. Evidence that the acute behavioral and electrophysiological effects of bupropion (Wellbutrin[reg]) are mediated by a noradrenergic mechanism. *Neuropsychopharmacology* (1994) 11:133–41. doi: 10.1038/npp.1994.43
40. Ascher JA, Cole JO, Colin JN, Feighner JP, Ferris RM, Fibiger HC, et al. Bupropion: a review of its mechanism of antidepressant activity. *J Clin Psychiatry* (1995) 56:395–401.
41. Ford CP. The role of D2-autoreceptors in regulating dopamine neuron activity and transmission *Neuroscience* (2014) 282:13–22. doi: 10.1016/j.neuroscience.2014.01.025
42. Ferris RM, Cooper BR. Mechanism of antidepressant activity of bupropion. *J Clinical Psychiatry Monogr Seri.* (1993) 11:2–14.
43. Frazer A, Benmansour S. Delayed pharmacological effects of antidepressants. *Mol Psychiatry* (2002) 7:S23–8. doi: 10.1038/sj.mp.4001015
44. Grace AA. Phasic versus tonic dopamine release and the modulation of dopamine system responsivity: a hypothesis for the etiology of schizophrenia. *Neuroscience* (1991) 41:1–24. doi: 10.1016/0306-4522(91)90196-U
45. Rutledge RB, Skandali N, Dayan P, Dolan RJ. Dopaminergic modulation of decision making and subjective well-being. *J Neurosci.* (2015) 35, 9811–22. doi: 10.1523/JNEUROSCI.0702-15.2015
46. Scholl J, Kolling N, Nelissen N, Browning M, Rushworth MF, Harmer CJ. Beyond negative valence: 2-week administration of a serotonergic antidepressant enhances both reward and effort learning signals. *PLoS Biol.* (2017) 15:e2000756. doi: 10.1371/journal.pbio.2000756

Conflict of Interest Statement: The authors declare that the research was conducted in the absence of any commercial or financial relationships that could be construed as a potential conflict of interest.

Copyright © 2018 Walsh, Huneke, Brown, Browning, Cowen and Harmer. This is an open-access article distributed under the terms of the Creative Commons Attribution License (CC BY). The use, distribution or reproduction in other forums is permitted, provided the original author(s) and the copyright owner(s) are credited and that the original publication in this journal is cited, in accordance with accepted academic practice. No use, distribution or reproduction is permitted which does not comply with these terms.