



Modulation of Legume Defense Signaling Pathways by Native and Non-native Pea Aphid Clones

Carlos Sanchez-Arcos, Michael Reichelt, Jonathan Gershenzon and Grit Kunert*

Department of Biochemistry, Max Planck Institute for Chemical Ecology, Jena, Germany

OPEN ACCESS

Edited by:

Linda Walling,
University of California, Riverside, USA

Reviewed by:

Claus Wasternack,
Leibniz Institute of Plant Biochemistry,
Germany

Gustavo C. MacIntosh,
Iowa State University, USA

*Correspondence:

Grit Kunert
gkunert@ice.mpg.de

Specialty section:

This article was submitted to
Plant Biotic Interactions,
a section of the journal
Frontiers in Plant Science

Received: 24 June 2016

Accepted: 28 November 2016

Published: 15 December 2016

Citation:

Sanchez-Arcos C, Reichelt M,
Gershenzon J and Kunert G (2016)
Modulation of Legume Defense
Signaling Pathways by Native
and Non-native Pea Aphid Clones.
Front. Plant Sci. 7:1872.
doi: 10.3389/fpls.2016.01872

The pea aphid (*Acyrtosiphon pisum*) is a complex of at least 15 genetically different host races that are native to specific legume plants, but can all develop on the universal host plant *Vicia faba*. Despite much research, it is still unclear why pea aphid host races (biotypes) are able to colonize their native hosts while other host races are not. All aphids penetrate the plant and salivate into plant cells when they test plant suitability. Thus plants might react differently to the various pea aphid host races. To find out whether legume species vary in their defense responses to different pea aphid host races, we measured the amounts of salicylic acid (SA), the jasmonic acid-isoleucine conjugate (JA-Ile), other jasmonate precursors and derivatives, and abscisic acid (ABA) in four different species (*Medicago sativa*, *Trifolium pratense*, *Pisum sativum*, *V. faba*) after infestation by native and non-native pea aphid clones of various host races. Additionally, we assessed the performance of the clones on the four plant species. On *M. sativa* and *T. pratense*, non-native clones that were barely able to survive or reproduce, triggered a strong SA and JA-Ile response, whereas infestation with native clones led to lower levels of both phytohormones. On *P. sativum*, non-native clones, which survived or reproduced to a certain extent, induced fluctuating SA and JA-Ile levels, whereas the native clone triggered only a weak SA and JA-Ile response. On the universal host *V. faba* all aphid clones triggered only low SA levels initially, but induced clone-specific patterns of SA and JA-Ile later on. The levels of the active JA-Ile conjugate and of the other JA-pathway metabolites measured showed in many cases similar patterns, suggesting that the reduction in JA signaling was due to an effect upstream of OPDA. ABA levels were downregulated in all aphid clone-plant combinations and were therefore probably not decisive factors for aphid-plant compatibility. Our results suggest that *A. pisum* clones manipulate plant-defense signaling to their own advantage, and perform better on their native hosts due to their ability to modulate the SA- and JA-defense signaling pathways.

Keywords: *Acyrtosiphon pisum*, pea aphid host races, plant hormones, salicylic acid, jasmonates, abscisic acid

INTRODUCTION

More than 5000 aphid species are known today (Blackman and Eastop, 2000), with at least part of the diversity due to sympatric speciation initiated by individuals that switched to new host plants (Diehl and Bush, 1984; Dres and Mallet, 2002). When aphids switch to new plants they may be confronted with new defense mechanisms (Goggin, 2007; Smith and Boyko, 2007;

Howe and Jander, 2008; Wu and Baldwin, 2010) and so may be unable to establish a compatible interaction. In most cases plants will recognize new aphid invaders on the basis of herbivore-associated molecular patterns (HAMPs) that lead to HAMP-triggered immunity (Hogenhout and Bos, 2011; Kaloshian and Walling, 2016). Among the major aphid HAMPs studied are salivary proteins, such as a 3–10 kDa protein from *Myzus persicae* that can induce a defense response in *Arabidopsis thaliana* (De Vos and Jander, 2009). Several *M. persicae* salivary HAMPs have been shown to be detrimental to aphids and reduced their fecundity on *A. thaliana* and *Nicotiana tabacum* (Bos et al., 2010; Elzinga et al., 2014) presumably because of the defense reactions they trigger. For example, HAMPs induce an influx of Ca^{2+} ions, an important second messenger in signaling actions (Wu and Baldwin, 2010). Ca^{2+} ions are associated with the production of reactive oxygen species (ROS) and other defense responses (Chen et al., 1993; Mai et al., 2013; Herrera-Vasquez et al., 2015).

The best studied defense reaction in plants is the formation of phytohormones involved in signal transduction pathways (Mauch-Mani and Mauch, 2005; Pieterse et al., 2009, 2012; Cao et al., 2011; Morkunas et al., 2011; Denance et al., 2013; Wasternack and Hause, 2013; Caarls et al., 2015), among which salicylic acid (SA) and jasmonic acid-isoleucine (JA-Ile) are the two main defense-related compounds. While the SA-defense pathway has mainly been associated with the response against biotrophic pathogens, the jasmonic acid (JA-) defense pathway, mainly activated after wounding (Howe, 2004), affects herbivorous insects and necrotrophic pathogens (Pieterse et al., 2012). Both defense pathways are, however, strongly interconnected (De Vos et al., 2005; Beckers and Spoel, 2006; Koornneef and Pieterse, 2008; Pieterse et al., 2009; Gimenez-Ibanez and Solano, 2013; Caarls et al., 2015), and it is reported that SA can negatively affect JA signaling downstream of the SCF^{COI1}-JAZ complex (Koornneef et al., 2008; Zhang et al., 2009, 2013; Van Der Does et al., 2013), and that JA can suppress the SA-defense pathway (Brooks et al., 2005; Nomura et al., 2005). Synergistic interactions between SA and JA signaling have also been detected (Schenk et al., 2000; Mur et al., 2006). Additionally the timing and the sequence of SA and JA signaling initiation (Koornneef et al., 2008; Leon-Reyes et al., 2010) as well as the levels of phytohormones seem to be important for certain defense responses (Mur et al., 2006). Other phytohormones like abscisic acid (ABA) play an important role in fine tuning the defense response of the plants and interfere with JA and SA signaling (Mauch-Mani and Mauch, 2005; Ton et al., 2009; Cutler et al., 2010; Cao et al., 2011; Morkunas et al., 2011; Denance et al., 2013). Initially, ABA promotes early defense responses, closing stomata and stimulating callose deposition, which blocks the intrusion of the pathogen into plant tissue. In late responses, ABA interacts with other defense pathways inhibiting the SA-dependent responses or modulating the JA-dependent pathway (Yasuda et al., 2008; Ton et al., 2009; Pieterse et al., 2012; Finkelstein, 2013). Much is still to be learned about the regulation of hormonal cross talk. Nonetheless, it is assumed that these mechanisms provide plants with an adaptable system capable of tuning defense responses to different classes of attackers (Pieterse et al., 2012) and resulting in the formation of toxic or

deterrent defense compounds that prevent the colonization of the plant.

Aphids employ a range of strategies to overcome plant defense (Walling, 2008; Giordanengo et al., 2010; Kamphuis et al., 2013; Will et al., 2013; Jaouannet et al., 2014). They may detoxify defense compounds, induce nutrient sinks or sequester calcium to block phloem sealing. However, many of the effector proteins in aphid saliva may hinder activation of plant defenses and so may decrease phytohormone signaling. For example, Mp55, an effector molecule from *M. persicae* suppressed the formation of three defense compounds in *A. thaliana*: 4-methoxyindol-3-ylmethyl glucosinolate, callose and hydrogen peroxide (Elzinga et al., 2014). A structural protein of the stylet sheath, important for sealing the stylet penetration site, might prevent the influx of Ca^{2+} ions and the activation of Ca^{2+} -dependent defense signaling machinery (Abdellatef et al., 2015; Furch et al., 2015). Calcium-binding proteins in aphid saliva seem to have the same effect (Will et al., 2007). In other cases, the mode of action of salivary effectors is not known. However, effector proteins like Armet and C002 from *A. pisum* (Mutti et al., 2006, 2008; Wang et al., 2015), Me10 and Me23 from the potato aphid *Macrosiphum euphorbiae*, and PIntO1 and PIntO2 from the green peach aphid *M. persicae* enhance performance on the respective host plants (Pitino and Hogenhout, 2013), and silencing of the encoding genes by RNAi reduced aphid fecundity (Mutti et al., 2006, 2008; Bos et al., 2010; Pitino et al., 2011). These proteins may also interfere with defense-signaling pathways and so alter phytohormone levels. Thus the measurement of phytohormone levels after aphid infestation may provide excellent indications about whether these insects trigger or block defense signaling on different host plants.

One of the best studied aphid species is the pea aphid *Acyrtosiphon pisum* whose genome was the first to be completely sequenced among hemipterans (The International Aphid Genomics Consortium, 2010). The pea aphid is a legume specialist feeding on crops like lentil, bean, pea, alfalfa, and clover, as well as wild legume species. About 6200 years ago it underwent a rapid diversification, which led to the development of at least 15 different sympatric host races or biotypes specialized on certain host plants (Ferrari et al., 2006, 2008; Peccoud et al., 2009a,b, 2015). A pea aphid host race performs best on its native host plant, and has a reduced fitness or cannot survive at all on other legume species. However, all pea aphid host races can perform well, sometimes best on *Vicia faba*, the universal host plant for all pea aphid biotypes characterized to date. The mechanisms that are involved in this host specialization are mostly unknown. There were attempts to find the genomic regions associated with plant adaptation of pea aphid host races (Hawthorne and Via, 2001; Jaquierey et al., 2012; Simon et al., 2015). A genome-wide study of pea aphid host races was conducted and a few loci encoding salivary proteins were identified in regions under putative divergent selection (Jaquierey et al., 2012). Investigation of feeding behavior revealed that regardless of whether they are on their native host plant or another legume species, pea aphids start to penetrate the plant and to pierce and salivate into plant cells (Schwarzkopf et al., 2013). In order to find out what is salivated into the plant, transcriptomic analysis of salivary

glands was conducted and around 600 pea aphid salivary genes were described (Carolan et al., 2011). In addition, proteins were identified by proteomic analysis of saliva (collected from artificial diet fed by aphids) or salivary glands (Carolan et al., 2009, 2011; Vandermoten et al., 2014). These salivary proteins may suppress plant-defense responses in native host plants (Will et al., 2007; Mutti et al., 2008; Pitino and Hogenhout, 2013) or trigger defense reactions in non-host plants (Li et al., 2006; Gao et al., 2008; Hogenhout and Bos, 2011). To investigate these roles, it would be useful to determine how phytohormone levels differ among various host race-host species combinations.

The pea aphid complex has become a model system for asking questions about the origin and maintenance of feeding specialization in insect herbivores. To find out why host races can perform well on their native or the universal host plant while they are not able to colonize other plants, an important step would be to measure the defense phytohormone levels to determine whether defenses are being activated or not. The detection of differences in phytohormone levels induced by native vs. non-native host races would favor the hypothesis that native aphid races are able to manipulate plant-defense activation processes for their own benefit. So far, there is just one study investigating the phytohormone response of a native host plant (*Pisum sativum*) to pea aphid infestation (Mai et al., 2014). This study however, concentrated on changes due to aphid numbers and only used an aphid clone that was native to *P. sativum*. Thus information about how pea aphid host plants react to non-native pea aphid host races is still lacking. Therefore, in this study we investigated the phytohormone response of three native host plants of the pea aphid, *Medicago sativa*, *P. sativum*, *Trifolium pratense*, and the universal host *V. faba* over a 4-day time course after infestation with native and non-native aphid clones. We analyzed levels of the JA-Ile conjugate, SA, and ABA, and also quantified several other jasmonate metabolites to explore how aphids might manipulate hormone signaling by interfering with specific biosynthetic steps. In addition, we determined the performance of native and non-native aphid host races on each plant species. Although data are available in the literature on pea aphid reproduction on different hosts, this information is for plants of different ages and varieties and from different growing conditions that what was used here, and did not assess the survival and growth of adult aphids.

MATERIALS AND METHODS

Plant Material

Four legume plant species: *M. sativa* cultivar (cv.) 'Giulia' (alfalfa), *T. pratense* cv. 'Dajana' (red clover), *P. sativum* cv. 'Baccara' (pea), and *V. faba* cv. 'The Sutton' (broad bean), were grown in 7-cm diameter plastic pots with a standardized soil mixture (7:20 mixture of Klasmann Tonsubstrat and Klasmann Kultursubstrat TS1, Klasmann-Deilmann GmbH, Geeste, Germany) in climate chambers maintained at 20°C, 70 ± 10% relative humidity, and 16-h light/8-h dark photoperiod. *M. sativa* and *T. pratense* were grown three plants per pot in

order to get enough plant material for phytohormone analyses (approximately 10 and 6 leaves per pot, respectively), while *P. sativum* and *V. faba* were grown individually (approximately 4 leaves per pot for each species). *M. sativa* and *T. pratense* plants were used in experiments 20 days after sowing and *P. sativum* and *V. faba* 10 days after sowing.

Aphids

Three pea aphid (*A. pisum* Harris) clones, each representing one pea aphid host race, were used in the experiments: the clone L84 representing the *Medicago* race (here called MR), the clone T3-8V1 representing the *Trifolium* race (TR), and the clone Colmar representing the *Pisum* race (PR). Aphids were initially collected from their native host plants *T. pratense*, *M. sativa*, and *P. sativum*, respectively, and genotypically assigned to their respective host race [for detailed information see Supplementary Table S1 in Peccoud et al. (2009a)]. All aphids were reared on 4-week-old broad bean plants. To synchronize the age of the aphids for the experiments, five apterous female adults were placed on a broad bean plant and were allowed to reproduce for 48 h. The nymphs were then transferred to new plants and maintained for 9 days until they reached the adult age. Several serial transfers of nymphs were done until the desired number of synchronized young adult aphids was obtained. To avoid escape of aphids, all aphid containing plants were covered with air permeable cellophane bags (18.8 cm × 39 cm, Armin Zeller, Nachf. Schütz & Co, Langenthal, Switzerland), and placed in a climate chamber under the conditions described above.

Experimental Design

To determine the performance of the three different pea aphid clones of various host races, each plant species was separately infested with each pea aphid clone resulting in 12 plant species-aphid clone combinations. To evaluate the development of the different pea aphid clones over time, plants were infested with 20 adult, apterous aphids, and performance parameters were measured 24, 48, 72, and 96 h after aphid infestation and at the start of the experiment. Survival and mean weight of adult aphids (weight of all alive adult aphids on a plant divided by the number of surviving adult aphids), and the weight of all offspring per plant were measured as performance parameters. To keep the aphids as undisturbed as possible (and to duplicate the setup used in the phytohormone experiment described below), different sets of plants and aphids were used at each time point. For this performance experiment, five replicates were used.

To evaluate the response of the plant species toward infestation with the different pea aphid clones, phytohormone levels were investigated. The experimental setup was the same as for the performance experiment with 12 plant species – aphid clone combinations sampled at four-time points. Additionally plants without aphids served as controls. Ten replicates were employed.

All experimental plants, including aphid-free control plants, were covered with air permeable cellophane bags and were placed in a climate chamber under conditions as described above.

Plant Material Sampling and Extraction

For plant sampling, the aphids were removed from the plants using a paintbrush. As a control for possible induction of phytohormones due to contact with the paintbrush, control plants were brushed in the same way as aphid-infested plants. Above-ground parts of the plant seedlings were harvested and rapidly frozen in liquid nitrogen. Frozen samples were stored overnight in 2-ml Eppendorf tubes at -80°C and then freeze-dried for 48 h. Dried plant material was homogenized into a fine powder by adding three stainless steel beads (3 mm \varnothing) in each tube and vigorously shaking for four min in a paint shaker (Skandex shaker SO-10 m, Fast and Fluid Management, Sassenheim, The Netherlands). Portions (10 mg) of dried plant material were extracted with 1 ml ice-cold extraction solution containing 80% methanol acidified with 0.1% formic acid with deuterated or ^{13}C -labeled phytohormones as internal standards, (40 ng ml^{-1} of jasmonic acid- d_6 , SA- d_4 , and ABA- d_6 , and 8 ng ml^{-1} of jasmonic acid- $^{13}\text{C}_6$ -isoleucine conjugate). Samples were immediately vortexed for 10 s and continuously sonicated in a water bath at room temperature (20°C) for 15 min at maximum frequency (35 kHz). After centrifugation (10 min at 4,500 g and -10°C), supernatants were filtered using 0.45 mm PTFE AcroPrepTM 96-well filtration plates (Pall Corporation, Port Washington, NY, USA) and a vacuum filtration unit. All filtered plant extracts were stored at -80°C until LC-MS/MS analysis.

Quantification of Phytohormones by LC-MS/MS

Chromatographic separation of phytohormones was performed on an Agilent 1260 HPLC system (Agilent Technologies, Santa Clara, CA, USA). Separation was achieved on a Zorbax Eclipse XDB-C18 column (50 mm \times 4.6 mm, 1.8 μm , Agilent). Formic acid (0.05%) in water and acetonitrile were employed as mobile phases A and B, respectively. The elution profile was: 0–0.5 min, 10% B; 0.5–4.0 min, 10–90% B; 4.0–4.02 min, 90–100% B; 4.02–4.50 min, 100% B; 4.50–4.51 min 100–10% B, and 4.51–7.00, 10% B. The mobile phase flow rate was 1.1 ml/min. The column temperature was maintained at 25°C . An API 5000 tandem mass spectrometer (Applied Biosystems, Foster City, CA, USA) equipped with a Turbospray ion source was operated in negative ionization mode. The instrument parameters were optimized by infusion experiments with pure standards, where available. The ion spray voltage was maintained at -4500 eV. The turbo gas temperature was set at 700°C . Nebulizing gas was set at 60 psi, curtain gas at 25 psi, the heating gas at 60 psi and collision gas at 7 psi. Multiple reaction monitoring (MRM) was used to monitor analyte parent ion \rightarrow product ion fragmentations as follows: m/z 136.9 \rightarrow 93.0 (collision energy (CE) -22 V; declustering potential (DP) -35 V) for SA; m/z 140.9 \rightarrow 97.0 (CE -22 V; DP -35 V) for SA- d_4 ; m/z 290.9 \rightarrow 165.1 (CE -24 V; DP -45 V) for 12-oxo phytodienoic acid (OPDA); m/z 209.1 \rightarrow 59.0 (CE -24 V; DP -35 V) for JA; m/z 215.1 \rightarrow 59.0 (CE -24 V; DP -35 V) for JA- d_6 ; m/z 225.1 \rightarrow 59 (CE -24 V; DP -35 V) for the two hydroxyjasmonic acid isomers (here designated OH-JA1 and OH-JA2, respectively); m/z 322.2 \rightarrow 130.1 (CE -30 V;

DP -50 V) for JA-Ile; m/z 328.2 \rightarrow 136.1 (CE -30 V; DP -50 V) for JA- $^{13}\text{C}_6$ -Ile; m/z 338.1 \rightarrow 130.1 (CE -30 V; DP -50 V) for 12-OH-JA-Ile; m/z 352.1 \rightarrow 130.1 (CE -30 V; DP -50 V) for 12-carboxyjasmonic acid-isoleucine conjugate (12-COOH-JA-Ile); m/z 263.0 \rightarrow 153.2 (CE -22 V; DP -35 V) for ABA; m/z 269.0 \rightarrow 159.2 (CE -22 V; DP -35 V) for ABA- d_6 . The hydroxyjasmonic acids include the 11- and 12-hydroxy derivatives (Miersch et al., 2008; Stitz et al., 2011), but we were unable to distinguish between them. Both Q1 and Q3 quadrupoles were maintained at unit resolution. Analyst 1.6 software (Applied Biosystems) was used for data acquisition and processing. Linearity in ionization efficiencies was verified by analyzing dilution series of standard mixtures. Phytohormones were quantified relative to the signal of their corresponding internal standard. For quantification of OPDA and OH-JA, the internal standard JA- d_6 was used applying experimentally determined response factors of 0.5 and 1.0, respectively. These response factors were determined by analyzing a mixture of OPDA and OH-JA [both kindly provided by W. Boland, MPI for Chemical Ecology, Jena, Germany; synthesized as described in Nakamura et al. (2011) and Shabab et al. (2014)] and JA- d_6 all at the same concentration. For OH-JA-Ile and COOH-JA-Ile quantification, JA- $^{13}\text{C}_6$ -Ile was used as internal standard applying a response factor of 1.0 in both cases. The response factor for OH-JA-Ile was determined by analyzing a mixture of OH-JA-Ile [kindly provided by W. Boland, MPI for Chemical Ecology, Jena, Germany; synthesized as described in Jimenez-Aleman et al. (2015)] and JA- $^{13}\text{C}_6$ -Ile at the same concentration. The response factor for COOH-JA-Ile was assumed to be similar. All metabolite levels are expressed in nanograms per gram dry weight (ng g^{-1} DW).

Chemicals

The sources of the phytohormone standards were jasmonic acid- d_6 (HPC Standards GmbH, Cunnorsdorf, Germany), SA- d_4 (Sigma-Aldrich), ABA- d_6 (Santa Cruz Biotechnology, Dallas, TX, USA), and jasmonic acid- $^{13}\text{C}_6$ -isoleucine conjugate [synthesized as described by Kramell et al. (1988) using $^{13}\text{C}_6$ -Ile (Sigma-Aldrich)].

The sources of the solvents used for the phytohormone extraction were methanol (LiChrosolv[®], LC-MS grade, Merck KGaA, Germany), acetonitrile (LC-MS grade, VWR Chemicals, USA), and formic acid (LC-MS grade, Fisher Scientific, Belgium).

Statistical Analysis

All data were analyzed with R version 3.2.0 (R Development Core Team, 2015).

The percentage of surviving adults was analyzed using binomial generalized linear models (glm) with time after aphid infestation as continuous and aphid clone as categorical explanatory variables. In cases of overdispersion, standard errors were corrected using quasi-glm models. *P*-values for explanatory variables were obtained by deleting explanatory variables one after another and comparison of the most complex model with the simpler model (Zuur et al., 2009).

To make the progression of aphid weight over time comparable between the different aphid clones, the weight of

surviving adult aphids is given as a percentage of the weight at the start of the experiment, which was set as 100%. These data were analyzed using a two-way ANOVA with the time points and aphid clones as categorical explanatory variables. Models were simplified by deleting non-significant variables (Crawley, 2013). To determine differences between factor levels, pairwise *t*-tests were performed and corrected for the false discovery rate. In cases where variances were unequal, the generalized least squares method [gls from the nlme library (Pinheiro et al., 2015)] was used. First, the optimal variance structure was determined by comparing models with different variance structures and choosing the one with the smallest AIC (Akaike information criterion). Models with this variance structure were used to determine the influence of explanatory variables by subsequent removal of explanatory variables from the model and comparison of the simpler with the more complex model with a likelihood ratio test (Zuur et al., 2009). Differences between factor levels were determined by factor level reduction (Crawley, 2013).

The influence of the aphid clone and time on the offspring biomass was investigated with a two-way ANOVA. To achieve homogeneity of variances, biomass data were square root transformed. Differences between factor levels were examined by pairwise *t*-tests corrected for false discovery rate.

The influence of aphid clone and duration of aphid infestation (both used as categorical explanatory variables) on the phytohormone levels was investigated using the generalized least squares method [gls from the nlme library (Pinheiro et al., 2015)] to account for the variance heterogeneity of the residuals. The varIdent variance structure was used. Whether the different variance of aphid clones, the duration of aphid infestation or the combination of both factors should be incorporated into the model, was determined by comparing models with different variance structures with a likelihood ratio test and choosing the model with the smallest AIC. The influence (*p*-values) of the explanatory variables was determined as explained above in the analysis of adult weight.

RESULTS

Aphid Host Race Clones Performed Much Better on Their Native Host Plants

To evaluate the performance of pea aphid clones of various host races on different plants over time, we determined the survival and weight of adult aphids, and the total weight of aphid offspring.

The survival of all aphid clones on all host plants decreased over time. The strength of the decrease was, however, dependent on the plant – aphid clone combination. On their respective native host plant or the universal host plant *V. faba*, more than 80% of the aphids survived for 4 days (96 h). This survival was significantly better than the survival of non-native clones (Figures 1A–C). On *M. sativa* hardly any (<2) of the non-native aphids survived for 96 h (Figure 1A). On *T. pratense* on average only 18% of the non-native *Pisum* clone (PR) survived, whereas about 48% of the non-native *Medicago* clone (MR)

survived (Figure 1B). The only exception from this general pattern was found for aphids on *P. sativum*. There the non-native MR survived as well as the native PR, and only the non-native *Trifolium* clone (TR) showed a strongly reduced survival (Figure 1C). On the universal host plant *V. faba* all aphid clones survived equally well (Figure 1D; Table 1).

Surviving adult aphids on all plants lost weight significantly during the experiment (Figures 1E–H; Table 2). In general, the aphid clones on their native host plants lost significantly less weight than non-native clones. This pattern was most pronounced on *T. pratense* plants, where the native TR lost about 20% of its initial weight over the course of the experiment, whereas both non-native clones (MR and PR) lost about 60% of their original weight (Figure 1F). Also, on *M. sativa* both non-native clones were significantly lighter than the native MR (Figure 1E). On *P. sativum*, the non-native TR lost significantly more weight than the non-native MR and the native PR (Figure 1G). In contrast, on the universal host *V. faba*, aphids of all clones either kept their initial weight for the first 2–3 days or even gained weight. Only after this time did they start to lose weight (Figure 1H).

The highest amount of aphid offspring produced during the experiment came from aphid clones on their native host plants. The total weight of these offspring increased significantly over time and was always significantly higher than the weight of offspring from non-native aphid clones (Figures 1I–K; Table 3). On *M. sativa* non-native aphids produced only a few offspring. After 96 h the total weight of their offspring added up to only one-fifth of that of native aphids (Figure 1I). The same was observed for the non-native PR on *T. pratense*, but there the non-native MR could produce about 40% the weight of offspring produced by the native TR (Figure 1J). On *P. sativum*, the weight of offspring over time increased for all aphid clones but with a significantly stronger increase for the native PR (Figure 1K). A significant increase in offspring weight for all aphid clones was also found on the universal host *V. faba*. On this plant, the offspring weight was always highest compared to offspring weight on other plants, but also differed between aphid clones. TR produced a significantly higher mass of offspring than the other clones. (Figure 1L).

Clones of Native Host Races Induced Lower Levels of SA and JA-Ile Than Clones of Non-native Races

To determine how the pea aphid clones of the various host races affected the defense response of the different plant species, we measured the amounts of three plant hormones known to be involved in defense signaling, SA, JA-Ile, and ABA, in each plant species separately infested with each of the aphid clones and in uninfested control plants.

Although SA levels in uninfested control plants changed only slightly over time, large changes were occasionally observed in aphid-infested plants (Figures 2A–D; Table 4). These changes occurred in an aphid clone-specific manner. In *T. pratense*, the SA levels after infestation with the non-native clones were always significantly higher than the ones observed after infestation with the native clone and the ones occurring in uninfested control

plants. Depending on the time point, SA levels in plants infested with the native aphid clone were higher, equal or lower than the levels in uninfested control plants (Figure 2B). In *M. sativa*, all aphid clones elicited a significant increase in SA levels. As in *T. pratense* this increase was significantly higher in plants infested with non-native aphid clones than in plants with the native aphid clone for the first 72 h after aphid infestation. However, after this time the SA levels in plants with the non-native aphid clones decreased whereas the levels in plants infested with the native MR clone increased to significantly higher levels (Figure 2A).

In *P. sativum*, the SA levels changed less over time. At most time points, SA levels in plants with the native PR clone were equivalent to levels in uninfested control plants. SA levels in

plants with non-native aphid clones did not follow a consistent pattern. They were higher (TR at all time points except 72 h, MR at 24 h), lower (MR at 72 h) or similar (MR at 48 h and 96 h, TR at 72 h) than those in uninfested control plants (Figure 2C). In contrast, the levels of SA in the universal host *V. faba* did not change very much in the first 72 h after aphid infestation for all aphid clones. However, 96 h after aphid infestation SA levels were significantly higher in aphid infested plants than in uninfested control plants. Whereas the PR clone elicited only a minimal increase, the TR and in particular the MR clone triggered a much higher increase (Figure 2D).

In uninfested control plants, JA-Ile levels behaved similarly to SA levels, staying constant over time or changing only

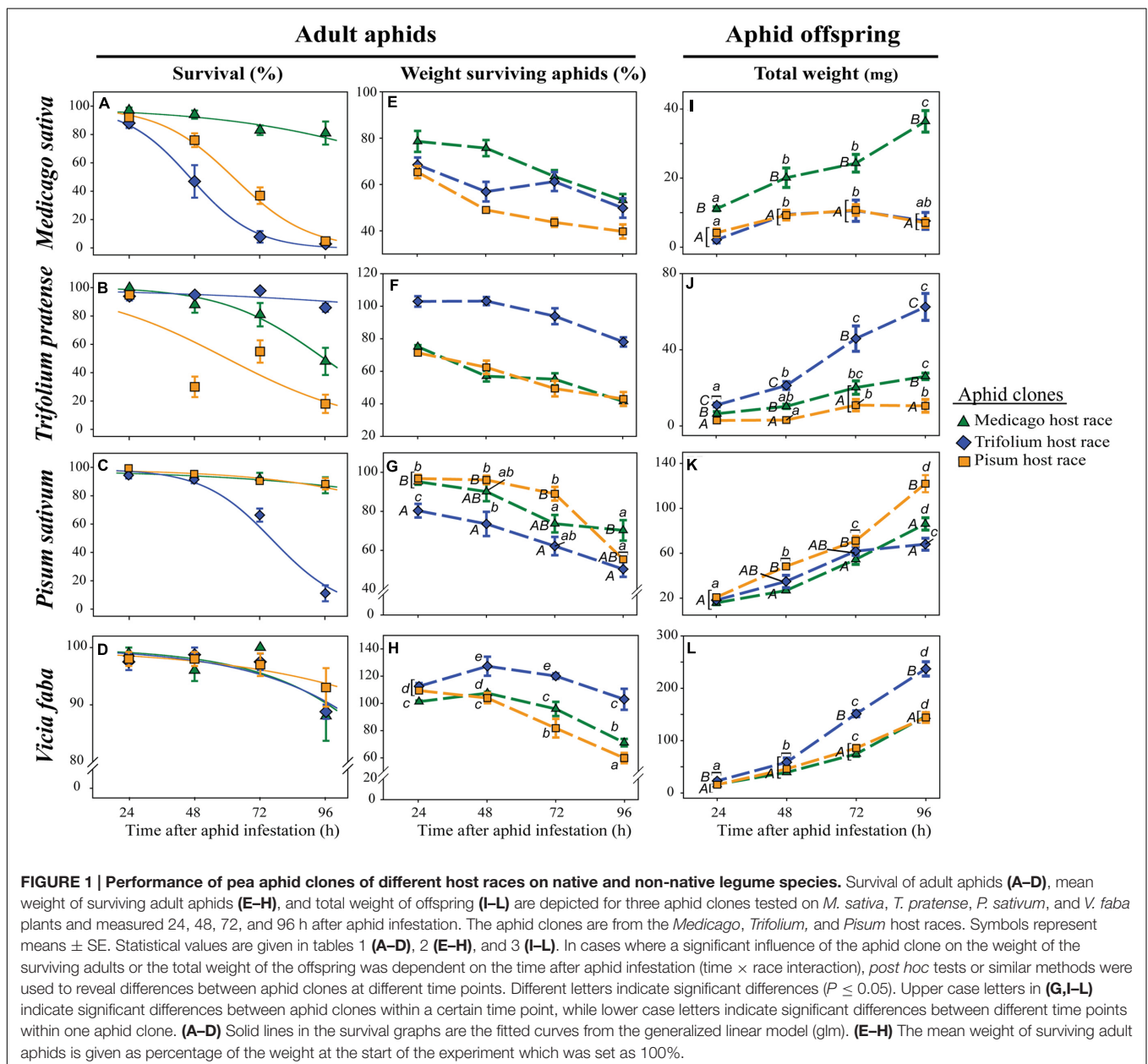


TABLE 1 | Statistical values for the analysis of the survival of adult aphids on different legume species according to aphid clone, time of aphid infestation, and the interaction between aphid clone and time of aphid infestation.

Plant species	Statistical test used	Factor	F/Deviance	P-value
<i>M. sativa</i>	glm/quasibinomial	Interaction	9.393	<0.001
		Clone	61.897	<0.001
		Time	39.620	<0.001
<i>T. pratense</i>	glm/quasibinomial	Interaction	2.201	0.121
		Clone	32.077	<0.001
		Time	17.905	<0.001
<i>P. sativum</i>	glm/quasibinomial	Interaction	9.402	<0.001
		Clone	29.848	<0.001
		Time	36.724	<0.001
<i>V. faba</i>	glm/binomial	Interaction	-0.774	0.679
		Clone	-0.457	0.796
		Time	-21.990	<0.001

Significant P-values are given in bold. Depending which statistical test was used F-values or Deviance are given. Deviance values are given in italics.

TABLE 2 | Statistical values for the analysis of the weight of surviving adult aphids on different legume species according to aphid clone, time of aphid infestation, and the interaction between aphid clone and time of aphid infestation.

Plant species	Statistical test used	Factor	F/L-ratio	P-value
<i>M. sativa</i>	ANOVA	Interaction	2.105	0.072
		Clone	30.790	<0.001
		Time	24.190	<0.001
<i>T. pratense</i>	ANOVA	Interaction	1.722	0.137
		Clone	152.140	<0.001
		Time	36.520	<0.001
<i>P. sativum</i>	ANOVA	Interaction	2.841	0.019
		Clone	24.307	<0.001
		Time	37.734	<0.001
<i>V. faba</i>	gls/varldent error structure for each time-clone combination	Interaction	35.768	<0.001
		Clone	24.540	<0.001
		Time	28.487	<0.001

Significant P-values are given in bold. Depending which statistical test was used F-values or Likelihood ratios are given. Likelihood ratios are given in italics.

slightly compared to changes triggered by aphid infestation. The strength of the aphid-triggered changes was aphid clone dependent (Figures 2E–H; Table 4). In *M. sativa* and *T. pratense* during the first three time points after aphid infestation, the JA-Ile concentration was significantly higher in plants with non-native clones compared to plants infested with the native clone or uninfested control plants. When infested with the native clone JA-Ile levels in *T. pratense* plants were in the same range as those in uninfested control plants, whereas JA-Ile levels in *M. sativa* were mostly significantly higher than the levels in the uninfested control plants. For both plant species the JA-Ile levels of plants infested with the native aphid clone increased after 72 h and

TABLE 3 | Statistical values for the analysis of the total weight of offspring produced on different legume species according to aphid clone, time of aphid infestation, and the interaction between aphid clone and time of aphid infestation.

Plant species	Transformation	Factor	F-value	P-value
<i>M. sativa</i>	sqrt	Interaction	3.655	0.005
		Clone	67.914	<0.001
		Time	19.396	<0.001
<i>T. pratense</i>	sqrt	Interaction	3.936	0.003
		Clone	84.247	<0.001
		Time	42.997	<0.001
<i>P. sativum</i>	sqrt	Interaction	5.113	<0.001
		Clone	28.904	<0.001
		Time	216.371	<0.001
<i>V. faba</i>	sqrt	Interaction	7.479	<0.001
		Clone	66.321	<0.001
		Time	481.858	<0.001

Significant P-values are given in bold.

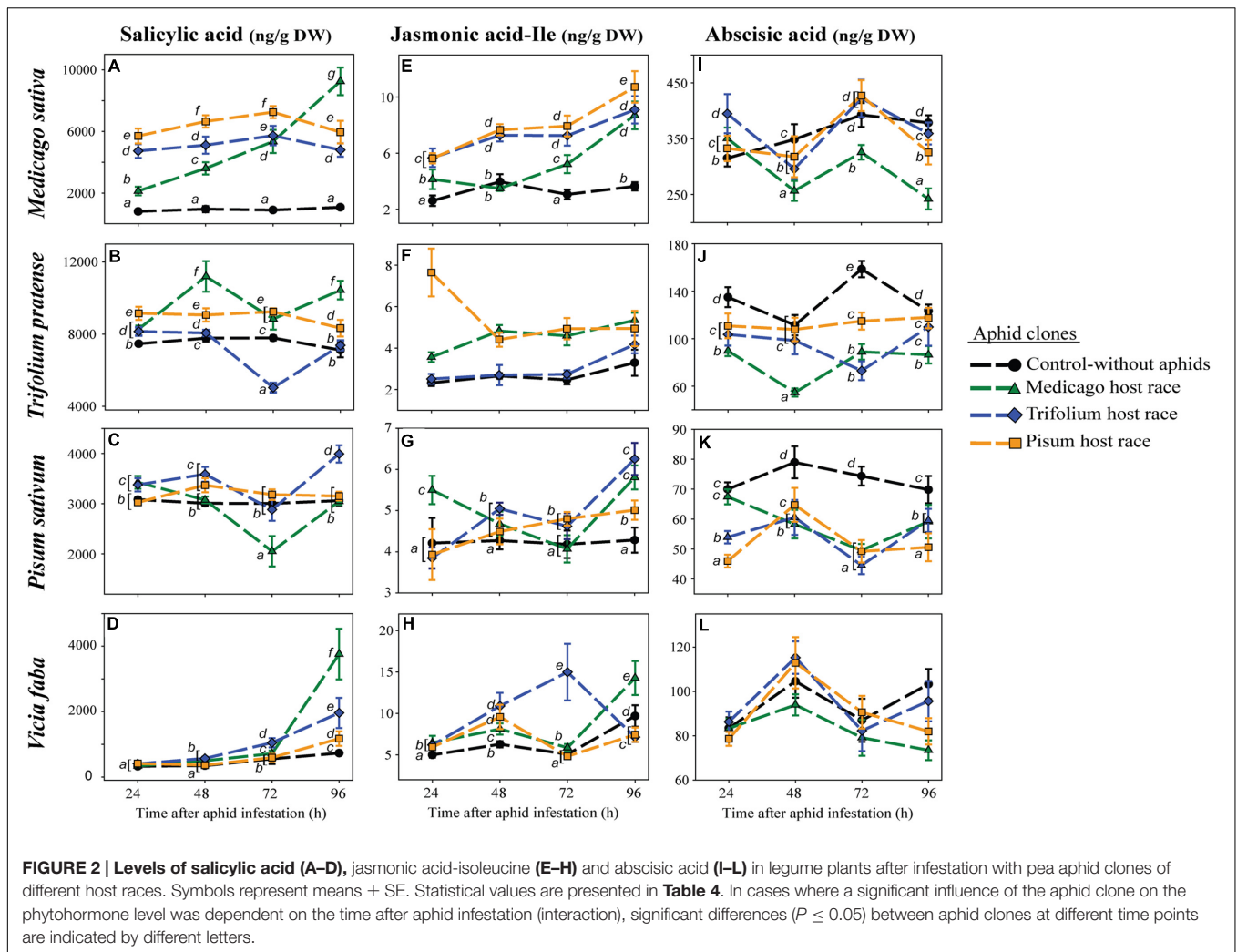
reached similar levels as in plants infested with non-native aphids at 96 h after aphid infestation (Figures 2E,F).

When the native PR clone fed on *P. sativum* plants, the JA-Ile levels steadily increased starting from levels comparable with those in uninfested control plants, and ending with levels being significantly higher than in control plants, but lower than in plants infested with non-native aphid clones (MR, TR). Levels in plants infested with non-native aphid clones fluctuated over time, being as low as in control plants (TR at 24 h, MR at 72 h) or significantly higher than in control plants (TR at 48, 72, and 96 h, MR at 24, 48, and 96 h) (Figure 2G). In *V. faba* plants, JA-Ile levels increased in all aphid-infested plants from 24 to 48 h being always higher than levels in the control plants. Afterward JA-Ile levels triggered by aphids fluctuated in a clone specific manner over time. At 96 h after aphid infestation, JA-Ile levels in aphid-infested plants were lower (PR- and TR-infested plants), or higher (MR-infested plants) than in uninfested control plants (Figure 2H).

Abscisic acid levels fluctuated over time in all four plant species (Figures 2I–L; Table 4), and fluctuated depending on the aphid clone in all plant species but *V. faba*. There were no differences between native and non-native clones. ABA levels in aphid-infested plants were generally either reduced or were similar to levels in uninfested control plants (Figures 2I–L). Only in *M. sativa* 24 h after aphid infestation, ABA levels in aphid-infested plants were higher than in uninfested control plants (Figure 2I).

Clones from Native Host Races Induced Lower Levels of JA-Pathway Metabolites Than Non-native Races

To obtain information about the effect of pea aphid infestation on the formation and further metabolism of the active jasmonate, the JA-Ile conjugate, we measured the levels of its precursors the 12-oxo phytodienoic acid (OPDA), and JA, as well as its



metabolites, the 12-hydroxyjasmonic acid-isoleucine conjugate (12-OH-JA-Ile), the 12-carboxyjasmonic acid-isoleucine conjugate (12-COOH-JA-Ile), and two hydroxylated forms of unconjugated JA (OH-JA1 and OH-JA2).

In *M. sativa*, all measured JA-Ile precursors and further metabolites generally had significantly lower levels after infestation with the native clone MR than after the non-native clones TR and PR (Figure 3; Table 4). This pattern was especially visible for the JA-Ile precursors, OPDA and JA (Figures 3A,B). The levels of the hydroxylated and carboxylated forms of JA and JA-Ile were mostly lowest in plants infested with the native MR clone, similar to the levels in uninfested control plants, but increased after 72 h reaching sometimes levels comparable to the ones in plants infested with non-native aphids 96 h after aphid infestation (Figures 3E–G).

Equivalently in *T. pratense*, levels of the precursors of JA-Ile, OPDA, and JA were always significantly lower after infestation with the native TR clone than the non-native clones MR and PR (Figures 4A,B). At 24 h after aphid infestation, plants harboring the native aphid clone TR had OPDA levels even

below the concentration in uninfested control plants (Figure 4A; Supplementary Table S2). This strong downregulation was also visible for OH-JA2 (Figure 4E), whereas the other metabolite of JA, OH-JA1, was not detectable in *T. pratense*. Also the levels of the hydroxylated derivatives of JA-Ile were higher in plants infested with the non-native aphid clones (Figures 4E,F). Levels of the carboxylated JA-Ile derivative fluctuated without evidence of a specific pattern. Of all the aphid-infested plants those infested with the native aphid clone TR showed levels most similar to the levels in uninfested control plants (Figure 4G).

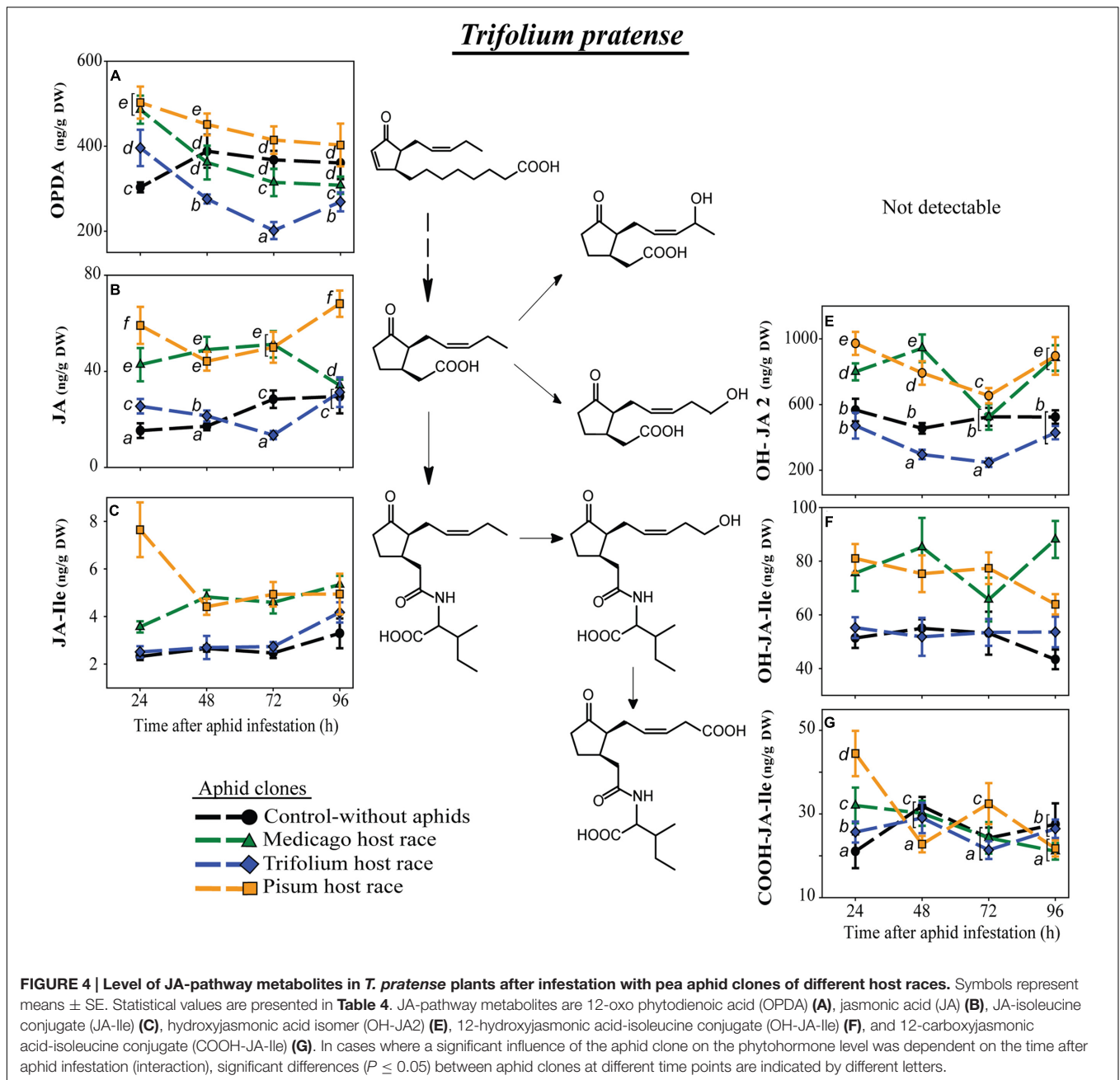
In contrast to the other plant species, *P. sativum* did not possess detectable levels of the metabolized forms of JA or JA-Ile (Figure 5). Levels of both JA-Ile precursors, OPDA and JA, changed over time in a clone-specific way (Figures 5A,B; Table 4) with levels in plants infested with the native PR clone usually being most similar to levels in uninfested control plants.

In the universal host, *V. faba*, levels of the JA-Ile precursors, OPDA and JA, did change over time but in an aphid clone-specific way. At most time points both precursor levels were higher in plants infested by each of the aphid clones than

TABLE 4 | Statistical values for the analysis of phytohormone levels in different legume species according to aphid clone, time of aphid infestation, and the interaction between aphid clone and time of aphid infestation.

Phytohormone	Factor	<i>Medicago sativa</i>			<i>Trifolium pratense</i>			<i>Pisum sativum</i>			<i>Vicia faba</i>		
		Variance	L-ratio	P-value	Variance	L-ratio	P-value	Variance	L-ratio	P-value	Variance	L-ratio	P-value
SA	Interaction	Treat	39.153	<0.001	Treat	50.454	<0.001	Treat	36.765	<0.001	Treat	27.395	0.001
	Time		7.336	0.062		8.873	0.031		1.682	0.641		47.924	<0.001
	Clone		222.283	<0.001		52.913	<0.001		15.691	0.001		7.499	0.058
JA	Interaction	Treat	25.652	0.002	Treat	46.036	<0.001	Treat	59.924	<0.001	Treat	46.836	0.001
	Time		35.843	<0.001		2.629	0.452		17.347	<0.001		41.140	<0.001
	Clone		58.841	<0.001		84.842	<0.001		11.623	0.009		10.147	0.017
ABA	Interaction	Treat	29.659	<0.001	Race	25.066	0.003	Time	31.306	<0.001	Time	12.635	0.180
	Time		24.361	<0.001		21.067	<0.001		9.962	0.019		22.568	<0.001
	Clone		10.416	0.015		61.095	<0.001		63.165	<0.001		5.243	0.155
OPDA	Interaction	Treat	83.702	<0.001	Treat	40.459	<0.001	Treat	33.652	<0.001	Treat	61.859	<0.001
	Time		41.687	<0.001		3.666	0.300		20.965	<0.001		58.519	<0.001
	Clone		75.721	<0.001		51.441	<0.001		16.154	0.001		10.430	0.015
JA-ile	Interaction	Treat	36.223	<0.001	Treat	15.788	0.071	Time	23.719	0.005	Treat	26.854	0.002
	Time		17.566	<0.001		19.783	<0.001		17.909	<0.001		34.264	<0.001
	Clone		99.135	<0.001		78.228	<0.001		11.373	0.251	Time	8.941	0.030
OH-JA1	Interaction	Treat	29.956	<0.001	Not detectable	Not detectable	Not detectable	Not detectable	Not detectable	Not detectable	Not detectable	13.691	0.003
	Time		45.957	<0.001								11.000	0.012
	Clone		49.960	<0.001								37.372	<0.001
OH-JA2	Interaction	Treat	76.052	<0.001	Treat	19.502	0.021	Treat	19.502	0.021	Treat	34.891	<0.001
	Time		7.005	0.072		26.260	<0.001		26.260	<0.001		1.158	0.763
	Clone		117.077	<0.001		91.853	<0.001		91.853	<0.001		13.692	0.134
OH-JA-ile	Interaction	Treat	82.928	<0.001	Race	10.144	0.339	Race	10.144	0.339	Treat	28.695	<0.001
	Time		12.537	0.006		2.353	0.502		2.353	0.502		9.006	0.029
	Clone		23.852	<0.001		53.008	<0.001		53.008	<0.001	Not detectable		
COOH-JA-ile	Interaction	Treat	29.033	<0.001	Treat	27.277	0.001	Treat	27.277	0.001	Not detectable	Not detectable	Not detectable
	Time		4.712	0.194		7.143	0.068		7.143	0.068			
	Clone		32.150	<0.001		1.808	0.613		1.808	0.613			

To account for the variance heterogeneity of the residuals the varident variance structure was used. Under "Variance" it is specified whether the variance is controlled for each aphid clone-plant species combination (Treat), for each aphid race (Race) or for each time point (Time). Significant P-values are given in bold.

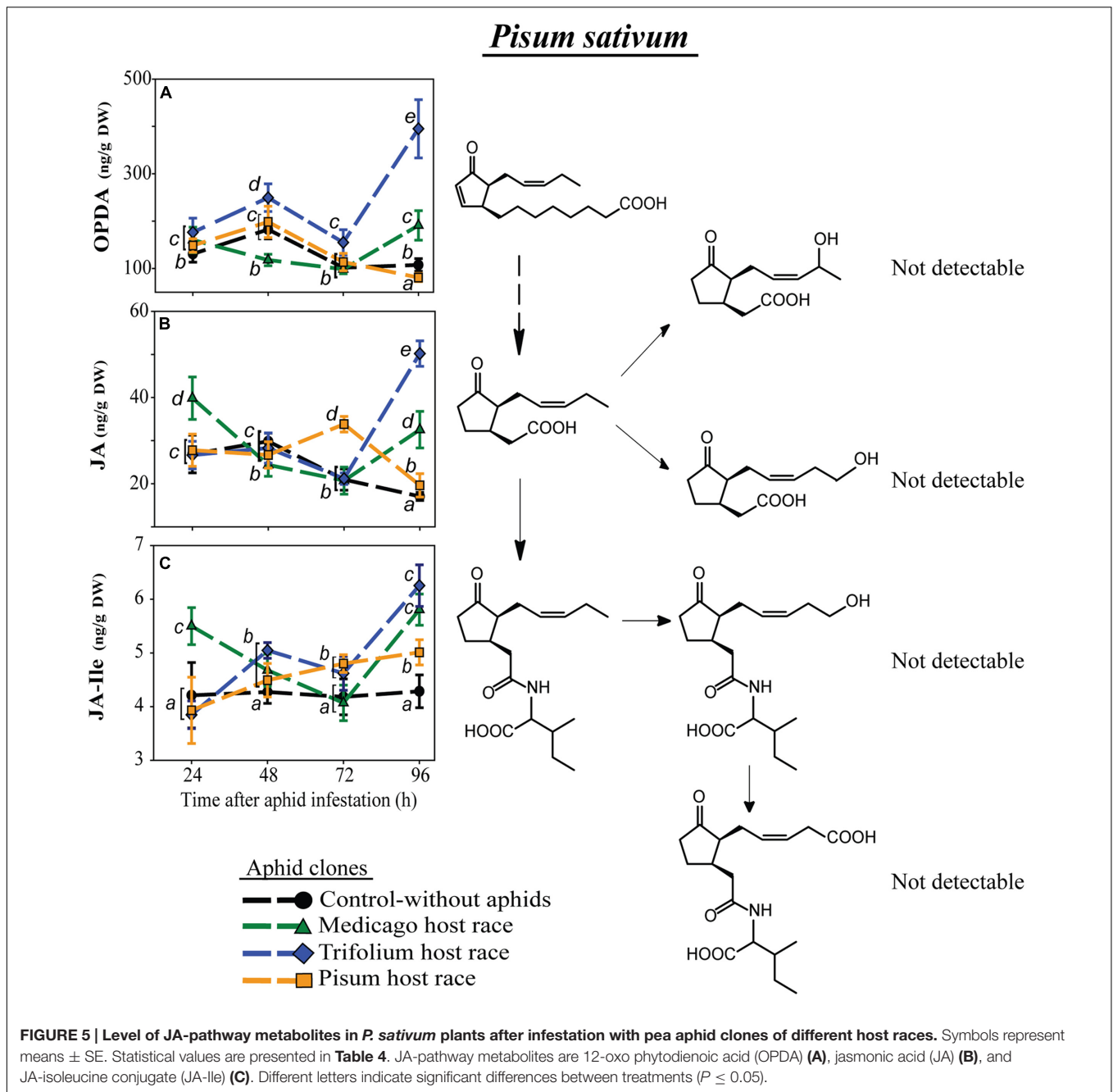


DISCUSSION

Infestation with Native Pea Aphid Host Races Leads to Lower Jasmonate and Salicylate Signaling

When legume plants were infested with clones of different pea aphid host races, several distinct patterns of phytohormone response were observed depending on the legume species, the pea aphid clone, the compatibility between plant and aphid, and the duration of the aphid infestation. In *T. pratense* and *M. sativa*, the concentration of the active form of the JA, JA-Ile, corresponded

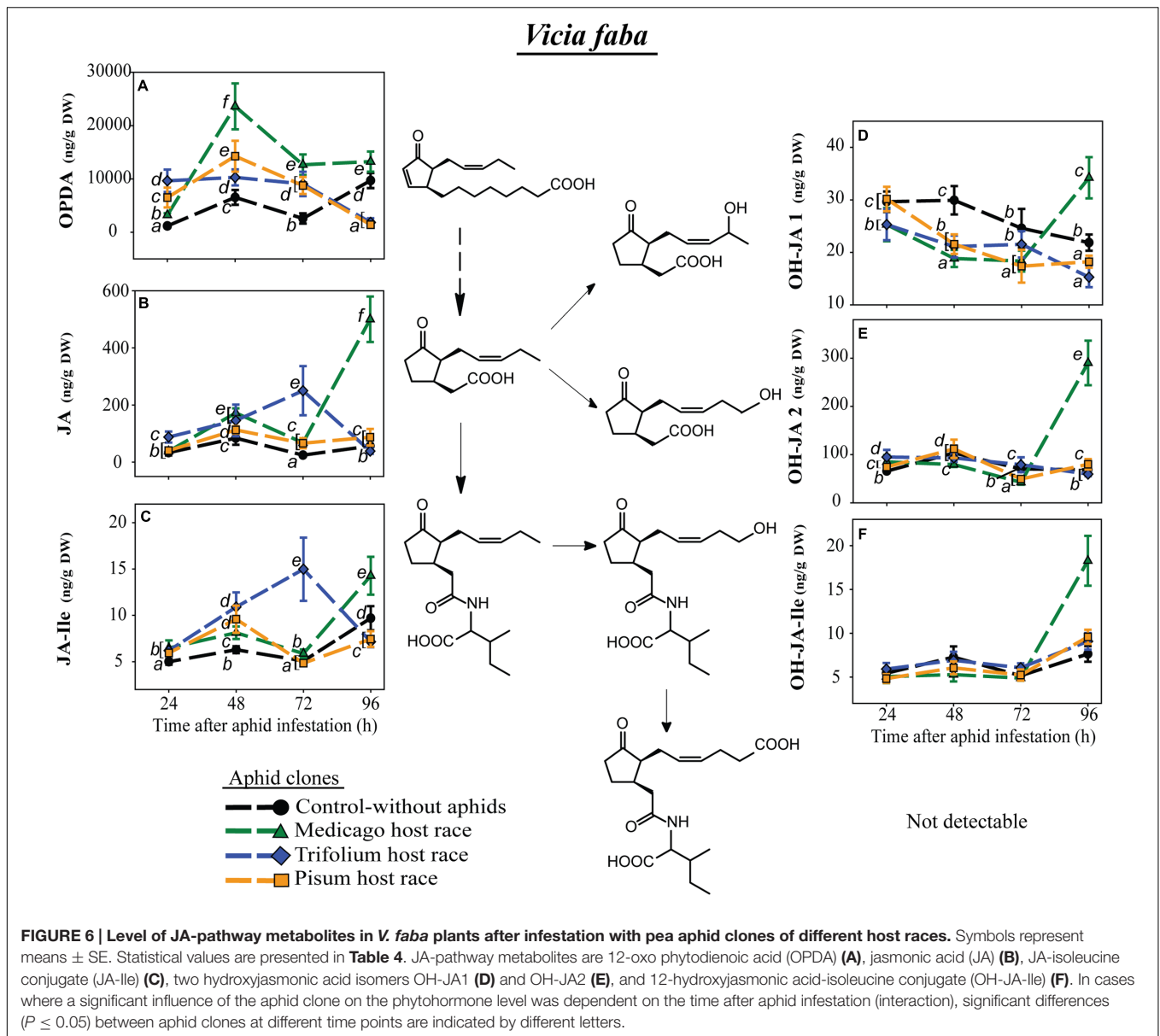
well with the aphid performance. Non-native aphids elicited a strong JA-Ile response whereas infestation with native aphid clones led to a much weaker induction (MR on *M. sativa*) or even to a near total absence of JA-Ile induction (TR on *T. pratense*). This weaker induction could be due to a lack of recognition of the aphid by the plant or an active suppression, which seems more likely since the JA pathway is usually activated upon wounding. When aphids initially penetrate plant tissue they regularly pierce and salivate into cells before arriving at the phloem and attempting to feed. Since aphids spend more time in this penetration phase on native than on non-native host plants (Schwarzkopf et al., 2013), they likely also pierce



more cells and cause more tissue damage on native hosts. More damage should result in a stronger JA response to native aphid clones than to non-native clones, but this was not the case. Thus aphids on their native host were either able to hide the damage they caused from plant recognition systems or to actively suppress the plant-defense response. The defense suppression hypothesis is also supported from the finding that previous pea aphid infestation resulted in an increased performance of conspecific offspring (Takemoto et al., 2013). Similar effects are known from other aphid species like the soybean aphid *Aphis glycines* (Varenhorst et al., 2015). This conclusion also suggests

that a strong up-regulation of JA-defense signaling is responsible for the low performance of non-adapted aphid clones.

The efficacy of JA-defense signaling has been shown in several other plant-aphid interactions. For example, in *A. thaliana* Ellis et al. (2002) recognized an enhanced resistance against *M. persicae* after the activation of the JA pathway. Genetic data also support the idea that the JA-defense pathway is the important one in plant-aphid interactions. Ten out of 13 tested genes associated with the JA pathway were induced only in *Medicago truncatula* plants resistant to *A. kondoi*, and not in susceptible *M. truncatula*, whereas all tested genes related to the SA pathway



were induced independently of the susceptibility of the plant (Gao et al., 2007).

The overall negative relation between aphid performance and JA levels was only partially true for SA. For instance, after 96 h on its native host, *M. sativa*, the MR clone elicited a high SA as well as a high JA response just as high or higher than that elicited by the non-native aphid clones, but in contrast to the non-native clones MR aphids survived and reproduced well on *M. sativa*. SA levels or the expression of SA-related genes have often been reported to be upregulated due to aphid infestation (Moran and Thompson, 2001; De Vos and Jander, 2009; Mai et al., 2014; Zhang et al., 2015; Stewart et al., 2016), and so we cannot yet exclude its importance for the pea aphid. Such an SA upregulation can also be triggered by factors derived from aphid endosymbionts, which might enter the plant via insect

saliva. This is known for the GroEL protein of the obligate aphid endosymbiont *Buchnera aphidicola* (Chaudhary et al., 2014), which induced SA-defense marker gene expression. Transgenic *A. thaliana* lines expressing GroEL exhibited a significant but small reduction in aphid fecundity. Thus SA-related defense triggered by endosymbionts led to a fitness cost but was not strong enough to prevent aphid increase.

Regardless of whether the JA- or SA-defense pathway was most effective against non-native aphids in our experiments, our measurements of aphid performance and phytohormone levels suggest that the native aphid clones (clone TR on *T. pratense*, clone MR on *M. sativa*) were able to suppress plant defenses on their native host plants (*T. pratense* and *M. sativa*). This suppression may not have been complete since at 96 h after aphid infestation JA-Ile levels of *M. sativa* infested by the native clone

equaled levels in most plants infested by non-native clones. Such an increase might be due to the increased number of aphids on the plant, which is known to influence the level of defense signaling (Mai et al., 2014; Stewart et al., 2016). Nevertheless the native MR clone survived and developed on its native host much better than non-native clones indicating its ability to cope with both the constitutive and any induced defense of the plant (Walling, 2008).

A different pattern of phytohormone response was observed in *P. sativum* after pea aphid infestation. This plant is the native host of the PR clone, but the other aphid clones also showed substantial survival, growth and reproduction on this plant (Figure 1, Schwarzkopf et al., 2013). The intermediate performance of non-native clones on *P. sativum* was also reflected in the SA and JA response of the plant. In contrast to the patterns for *M. sativa* and *T. pratense*, non-native aphids did not trigger a strong, consistent induction of JA-Ile and SA over the whole time course, except at 96 h after infestation when the non-native clones elicited higher JA-Ile levels than the native PR clone. Infestation with the non-native clones also caused stronger fluctuations in JA-Ile and SA profiles over time compared to infestation with the native clone. Such fluctuations were also reported for JA and JA methyl ester in *P. sativum* plants after pea aphid infestation (Mai et al., 2014). In the *A. thaliana* – *Brevicoryne brassicae* system, JA-related gene transcripts also showed fluctuations after infestation (Kusnierczyk et al., 2008). Whether these fluctuations were an expression of the intermediate ability of the aphids to deal with the plant response remains an open question. Aphid performance may be a consequence of their influence on plant-defense signaling pathways or their tolerance of defense toxins, deterrents and phloem-sealing mechanisms.

On the universal host plant *V. faba* both the JA- and the SA-regulated plant defenses seemed to be non-effective since clones of all host races performed very well in comparison to on other host plants. That pea aphids can positively influence *V. faba* for their own benefit was already reported by Takemoto et al. (2013), who observed that *A. pisum* nymphs developed faster when they could feed on *V. faba* plants previously infested by pea aphids. Since pre-infested *V. faba* produced less JA than uninfested control plants, the involvement of JA-related defenses was presumed. The pattern of phytohormone changes in this species was different than that for any other host plant. Basal SA levels were much lower than in all the other measured plant species. The levels were low for all clones until the last time point when they rose significantly with respect to those of uninfested control plants, where they reached levels also found in other plant species. Thus, SA signaling did not lead to effective defense against aphids in *V. faba*. JA-Ile levels generally rose over the whole time course, but curiously JA-Ile levels for the TR and PR clones were low at the last time point, even lower than those in the uninfested control. For these clones, the low JA-Ile levels went along with a high performance on *V. faba* at 96 h.

Abscisic acid, a phytohormone long known to regulate plant growth (Cutler et al., 2010), protect against water stress (Schroeder et al., 2001), control seed dormancy and germination (Karssen et al., 1983), and participate in source-sink communication (Yu et al., 2015), has recently been found to be

a major modulator of plant defense as well (Mauch-Mani and Mauch, 2005; Ton et al., 2009; Pieterse et al., 2012). ABA has been reported to interact with the JA- and SA-defense pathways. For instance, upon wounding or herbivory ABA acts synergistically with JA on the MYC branch of the JA pathway leading to an increased resistance to herbivory (Anderson et al., 2004; Yasuda et al., 2008). On the other hand, ABA can suppress SA-dependent defenses (De Torres Zabala et al., 2009; Jiang et al., 2010; Cao et al., 2011). Concerning aphids, there are several reports that infestation induced ABA levels or ABA-regulated gene expression in *Glycine max*, *M. truncatula*, and *A. thaliana* (Studham and Macintosh, 2013; Guo et al., 2015; Sun et al., 2015; Hillwig et al., 2016). In contrast, another study showed that ABA levels in *M. truncatula* were not affected or even reduced by *A. pisum* feeding (Stewart et al., 2016) a pattern we also found in our study, where ABA levels in aphid-infested plants were generally lower or very similar than those in control plants. Since this pattern held regardless of the plant or aphid clone studied, ABA does not seem to modulate defense reactions against pea aphids in legumes. However, ABA could play other roles in plant-aphid interactions. For instance, ABA-driven stomatal closure could be advantageous for aphids under dry conditions since it maintains plant turgor and so facilitates aphid feeding (Guo et al., 2015). However, by causing reductions in photosynthetic activity, ABA-induced closure of stomata could decrease the carbohydrate supply available to aphids. Interestingly, among the plant species studied, ABA levels were quite different, ranging from about 50 ng/g DW in TR infested *P. sativum* plants (72 h after aphid infestation) to more than 400 ng/g DW in PR infested *M. sativa* plants (72 h after aphid infestation). Also basal levels of ABA varied a lot between plants which suggest that changes in phytohormone levels between treatments are more important than absolute phytohormone levels.

Native Pea Aphid Host Races May Block Specific Steps in Jasmonate Signaling or Biosynthesis

To explore the mechanism by which native aphid clones might suppress the increase of JA-Ile, we investigated the levels of JA-Ile precursors and catabolites after infestation of clones of the various host races. Lower JA-Ile levels might result from lower levels of the precursors OPDA and JA, or to increased metabolism of JA-Ile to hydroxylated and carboxylated derivatives (OH-JA-Ile, OH-JA1, OH-JA2, and COOH-JA-Ile), which could inactivate JA signaling (Miersch et al., 2008; Koo and Howe, 2012; Koo et al., 2014).

The levels of OPDA, the first metabolite in the JA pathway that we measured, were different in *M. sativa* and *T. pratense* plants depending on the infesting aphid clone. In plants infested with non-native aphid clones, levels of OPDA were higher than in plants infested with the native clone, consistent with the trends in JA-Ile concentration. In the universal host plant *V. faba* OPDA levels were generally enhanced over the 72 h following aphid infestation. However, at 96 h after infestation, the TR and PR clones suppressed OPDA formation below the levels for uninfested control plants, suggesting that aphids influence

the JA pathway prior to the formation of OPDA. The fatty acid substrate of the JA pathway is α -linolenic acid (18:3), which is produced from galactolipids of chloroplast membranes (Wasternack and Hause, 2013). Recently Kanobe et al. (2015) detected less α -linolenic acid in soybean plants (*G. max*) infested with the soybean aphid (*Aphis glycine*) than in uninfested control plants or plants infested with other soybean antagonists, the soybean cyst nematode (*Heterodera glycines*) and the brown stem rot (*Cadophora gregata*). This suggests that certain pea aphid clones might suppress one of the steps in JA signaling or biosynthesis prior to the formation of α -linolenic acid. Or, the site of suppression could follow galactolipid hydrolysis. α -Linolenic acid is converted to OPDA in three steps by the sequential action of lipoxygenase (LOX), allene oxide cyclase (AOC) and allene oxide synthase (AOS) (Wasternack and Hause, 2013). The activity of LOX increased upon aphid infestation (Mai et al., 2014), while the genes encoding LOX and AOS were upregulated more strongly in wheat infested by an incompatible biotype of the Russian wheat aphid (*Diuraphis noxia*) than in wheat infested by a compatible biotype (Liu et al., 2011). Thus compatible (native) pea aphid biotypes might suppress OPDA levels by downregulating the activities of LOX or AOS.

Aphids might also reduce JA-Ile levels by accelerating catabolism to hydroxylated and carboxylated derivatives. These metabolites might additionally contribute to a partial switch-off of JA signaling (Miersch et al., 2008). In our experiments, the abundance of JA and JA-Ile metabolites was generally correlated with that of JA and JA-Ile making it unlikely that native host races owe their suppression of JA signaling to upregulation of jasmonate catabolism. In addition, jasmonate metabolite levels were often higher in plants infested with non-adapted than adapted clones. Interestingly, among the plant species studied, there was large variation in the levels of the jasmonate metabolites. For instance, *P. sativum* did not contain JA or JA-Ile metabolites in detectable amounts, while they were highest, especially OH-JA₂, in *T. pratense*. *P. sativum* might use other metabolic conversions to fine tune the JA pathway, like the methylation of JA and JA-Ile resulting in methyl-JA and methyl-JA-Ile, or glycosylation leading to JA-glucoside and JA-Ile-glucoside (Gfeller et al., 2010; Koo and Howe, 2012) – compounds which were not measured in this study. Taking the species together, when the hydroxylated and carboxylated metabolites were present, their levels were of the same magnitude as JA, whereas JA-Ile was present in levels an order of magnitude lower while OPDA was present at levels 1–2 orders of magnitude higher. However, this inter-plant variation in JA metabolites may only partially represent the true differences among the species. Other JA and JA-Ile metabolites, such as methylated or glucosylated forms of JA and JA-Ile, and other JA-amino acid conjugates are known (Gfeller et al., 2010; Koo and Howe, 2012) and might occur in legumes as well.

CONCLUSION

While plants deploy many different modes of defense against aphids (Edwards and Singh, 2006; Züst and Agrawal, 2016),

aphids often feed readily on their host plants. Yet our knowledge of the mechanisms by which aphids circumvent plant defenses is still quite limited. In the pea aphid complex, we have now shown that the ability of host races to feed on their native host plants may lie in their ability to manipulate defense signaling pathways either by avoiding recognition or by suppressing JA and SA signaling much more effectively on their native hosts than on non-native plants. Strikingly, this reduced JA and SA signaling triggered by native races occurred even though plant damage on native hosts was much higher due to a greater aphid population density resulting from higher growth, survival and reproduction rates. Since lower levels of the active JA-Ile conjugate were correlated with lower levels of the other JA-pathway metabolites measured (OPDA, JA, various hydroxylated and carboxylated derivatives), native host races likely block jasmonate formation upstream of OPDA. Plant ABA concentration did not change according to the native or non-native status of the infesting aphid clone indicating that ABA does not make a large contribution to the differential ability of pea aphid host races to colonize a plant.

The low levels of JA and SA in plants infested with native pea aphid host races were combined with significantly better performance. Hence native races may be able to reduce plant defenses, such as toxins, deterrents, and phloem-sealing mechanisms. Further work is necessary to identify these defense mechanisms. Additional research is also needed to understand the cause of reduced defense signals. Previous aphid work has often focused on the salivary effector proteins that are injected into host plants and the way these modulate plant processes to facilitate feeding (Hogenhout and Bos, 2011; Pitino and Hogenhout, 2013). Since all pea aphid clones, both native and non-native, are able to begin penetrating the plant (Schwarzkopf et al., 2013), but only some are able to feed and perform well, the type and quantity of these effectors may be critical in modulating plant-defense signaling and mediating aphid success. Future work on the nature of these effectors and the differences among pea aphid host races may help identify the basis for differential defense signaling.

AUTHOR CONTRIBUTIONS

CS-A and GK conceived and designed the experiments. CS-A performed the experiments. CS-A and MR executed the phytohormone analyses. CS-A and GK analyzed data. CS-A, GK, and JG interpreted the results and wrote the manuscript. All authors critically revised and consented to the final version of the manuscript.

FUNDING

This project was supported by the Max Planck Society, Germany, and the German Academic Exchange Service (DAAD) within the framework of the PPP – Procope German-French collaboration program (project code 57049694).

ACKNOWLEDGMENTS

We thank Jean-Christophe Simon (INRA, Le Rheu, France) for providing the aphid clones, Kerstin Zipfel, Christoph Scheck,

Pascal Scherreiks, and Kristina Schädel for experimental help, Andreas Weber and Elke Goschala for plant cultivation, and Ilka Vosteen and Elizabeth Pringle and two reviewers for helpful comments on previous versions of the manuscript.

REFERENCES

- Abdellatef, E., Will, T., Koch, A., Imani, J., Vilcinskas, A., and Kogel, K.-H. (2015). Silencing the expression of the salivary sheath protein causes transgenerational feeding suppression in the aphid *Sitobion avenae*. *Plant Biotechnol. J.* 13, 849–857. doi: 10.1111/pbi.12322
- Anderson, J. P., Badruzaufari, E., Schenk, P. M., Manners, J. M., Desmond, O. J., Ehlerl, C., et al. (2004). Antagonistic interaction between abscisic acid and jasmonate-ethylene signaling pathways modulates defense gene expression and disease resistance in *Arabidopsis*. *Plant Cell* 16, 3460–3479. doi: 10.1105/tpc.104.025833
- Beckers, G. J. M., and Spoel, S. H. (2006). Fine-tuning plant defence signalling: salicylate versus jasmonate. *Plant Biol.* 8, 1–10. doi: 10.1055/s-2005-872705
- Blackman, R. L., and Eastop, V. F. (2000). *Aphids on the World's Crops*. Chichester: Wiley.
- Bos, J. I. B., Prince, D., Pitino, M., Maffei, M. E., Win, J., and Hogenhout, S. A. (2010). A functional genomics approach identifies candidate effectors from the aphid species *Myzus persicae* (Green peach aphid). *PLoS Genet.* 6:e1001216. doi: 10.1371/journal.pgen.1001216
- Brooks, D. M., Bender, C. L., and Kunkel, B. N. (2005). The *Pseudomonas syringae* phytotoxin coronatine promotes virulence by overcoming salicylic acid-dependent defences in *Arabidopsis thaliana*. *Mol. Plant Pathol.* 6, 629–639. doi: 10.1111/j.1364-3703.2005.00311.x
- Caarls, L., Pieterse, C. M. J., and Van Wees, S. C. M. (2015). How salicylic acid takes transcriptional control over jasmonic acid signaling. *Front. Plant Sci.* 6:170. doi: 10.3389/fpls.2015.00170
- Cao, F. Y., Yoshioka, K., and Desveaux, D. (2011). The roles of ABA in plant-pathogen interactions. *J. Plant Res.* 124, 489–499. doi: 10.1007/s10265-011-0409-y
- Carolan, J. C., Caragea, D., Reardon, K. T., Mutti, N. S., Dittmer, N., Pappan, K., et al. (2011). Predicted effector molecules in the salivary secretome of the pea aphid (*Acyrtosiphon pisum*): a dual transcriptomic/proteomic approach. *J. Proteome Res.* 10, 1505–1518. doi: 10.1021/pr100881q
- Carolan, J. C., Fitzroy, C. I. J., Ashton, P. D., Douglas, A. E., and Wilkinson, T. L. (2009). The secreted salivary proteome of the pea aphid *Acyrtosiphon pisum* characterised by mass spectrometry. *Proteomics* 9, 2457–2467. doi: 10.1002/pmic.200800692
- Chaudhary, R., Atamian, H. S., Shen, Z., Briggs, S. P., and Kaloshian, I. (2014). GroEL from the endosymbiont *Buchnera aphidicola* betrays the aphid by triggering plant defense. *Proc. Natl. Acad. Sci. U.S.A.* 111, 8919–8924. doi: 10.1073/pnas.1407687111
- Chen, Z. X., Silva, H., and Klessig, D. F. (1993). Active oxygen species in the induction of plant systemic acquired resistance by salicylic acid. *Science* 262, 1883–1886. doi: 10.1126/science.8266079
- Crawley, M. (2013). *The R Book*. Hoboken, NJ: John Wiley and Sons, Ltd.
- Cutler, S. R., Rodriguez, P. L., Finkelstein, R. R., and Abrams, S. R. (2010). Abscisic acid: emergence of a core signaling network. *Annu. Rev. Plant Biol.* 61, 651–679. doi: 10.1146/annurev-arplant-042809-112122
- De Torres Zabala, M., Bennett, M. H., Truman, W. H., and Grant, M. R. (2009). Antagonism between salicylic acid and abscisic acid reflects early host-pathogen conflict and moulds plant defence responses. *Plant J.* 59, 375–386. doi: 10.1111/j.1365-313X.2009.03875.x
- De Vos, M., and Jander, G. (2009). *Myzus persicae* (green peach aphid) salivary components induce defence responses in *Arabidopsis thaliana*. *Plant Cell Environ.* 32, 1548–1560. doi: 10.1111/j.1365-3040.2009.02019.x
- De Vos, M., Van Oosten, V. R., Van Poecke, R. M. P., Van Pelt, J. A., Pozo, M. J., Mueller, M. J., et al. (2005). Signal signature and transcriptome changes of *Arabidopsis* during pathogen and insect attack. *Mol. Plant Microbe Interact.* 18, 923–937. doi: 10.1094/MPMI-18-0923
- Denance, N., Sanchez-Vallet, A., Goffner, D., and Molina, A. (2013). Disease resistance or growth: the role of plant hormones in balancing immune responses and fitness costs. *Front. Plant Sci.* 4:155. doi: 10.3389/fpls.2013.00155
- Diehl, S. R., and Bush, G. L. (1984). An evolutionary and applied perspective of insect biotypes. *Annu. Rev. Entomol.* 29, 471–504. doi: 10.1146/annurev.en.29.010184.002351
- Dres, M., and Mallet, J. (2002). Host races in plant-feeding insects and their importance in sympatric speciation. *Philos. Trans. R. Soc. B Biol. Sci.* 357, 471–492. doi: 10.1098/rstb.2002.1059
- Edwards, O., and Singh, K. B. (2006). Resistance to insect pests: what do legumes have to offer? *Euphytica* 147, 273–285. doi: 10.1007/s10681-006-3608-1
- Ellis, C., Karafyllidis, L., and Turner, J. G. (2002). Constitutive activation of jasmonate signaling in an *Arabidopsis* mutant correlates with enhanced resistance to *Erysiphe cichoracearum*, *Pseudomonas syringae*, and *Myzus persicae*. *Mol. Plant Microbe Interact.* 15, 1025–1030. doi: 10.1094/MPMI.2002.15.10.1025
- Elzinga, D. A., De Vos, M., and Jander, G. (2014). Suppression of plant defenses by a *Myzus persicae* (Green peach aphid) salivary effector protein. *Mol. Plant Microbe Interact.* 27, 747–756. doi: 10.1094/MPMI-01-14-0018-R
- Ferrari, J., Godfray, H. C. J., Faulconbridge, A. S., Prior, K., and Via, S. (2006). Population differentiation and genetic variation in host choice among pea aphids from eight host plant genera. *Evolution* 60, 1574–1584. doi: 10.1111/j.0014-3820.2006.tb00502.x
- Ferrari, J., Via, S., and Godfray, H. C. J. (2008). Population differentiation and genetic variation in performance on eight hosts in the pea aphid complex. *Evolution* 62, 2508–2524. doi: 10.1111/j.1558-5646.2008.00468.x
- Finkelstein, R. (2013). Abscisic acid synthesis and response. *Arabid. Book* 11:e0166. doi: 10.1199/tab.0166
- Furch, A. C. U., Van Bel, A. J. E., and Will, T. (2015). Aphid salivary proteases are capable of degrading sieve-tube proteins. *J. Exp. Bot.* 66, 533–539. doi: 10.1093/jxb/eru487
- Gao, L.-L., Anderson, J. P., Klingler, J. P., Nair, R. M., Edwards, O. R., and Singh, K. B. (2007). Involvement of the octadecanoid pathway in bluegreen aphid resistance in *Medicago truncatula*. *Mol. Plant Microbe Interact.* 20, 82–93. doi: 10.1094/MPMI-20-0082
- Gao, L.-L., Klingler, J. P., Anderson, J. P., Edwards, O. R., and Singh, K. B. (2008). Characterization of pea aphid resistance in *Medicago truncatula*. *Plant Physiol.* 146, 996–1009. doi: 10.1104/pp.107.111971
- Gfeller, A., Dubugnon, L., Liechti, R., and Farmer, E. E. (2010). Jasmonate biochemical pathway. *Sci. Signal.* 3:cm3. doi: 10.1126/scisignal.3109cm3
- Gimenez-Ibanez, S., and Solano, R. (2013). Nuclear jasmonate and salicylate signaling and crosstalk in defense against pathogens. *Front. Plant Sci.* 4:72. doi: 10.3389/fpls.2013.00072
- Giordanengo, P., Brunissen, L., Rusterucci, C., Vincent, C., Van Bel, A., Dinant, S., et al. (2010). Compatible plant-aphid interactions: how aphids manipulate plant responses. *C. R. Biol.* 333, 516–523. doi: 10.1016/j.crvi.2010.03.007
- Goggin, F. L. (2007). Plant-aphid interactions: molecular and ecological perspectives. *Curr. Opin. Plant Biol.* 10, 399–408. doi: 10.1016/j.pbi.2007.06.004
- Guo, H., Sun, Y., Peng, X., Wang, Q., Harris, M., and Ge, F. (2015). Up-regulation of abscisic acid signaling pathway facilitates aphid xylem absorption and osmoregulation under drought stress. *J. Exp. Bot.* 67, 681–693. doi: 10.1093/jxb/erv481
- Hawthorne, D. J., and Via, S. (2001). Genetic linkage of ecological specialization and reproductive isolation in pea aphids. *Nature* 412, 904–907. doi: 10.1038/35091062
- Herrera-Vasquez, A., Salinas, P., and Holuigue, L. (2015). Salicylic acid and reactive oxygen species interplay in the transcriptional control of defense genes expression. *Front. Plant Sci.* 6:171. doi: 10.3389/fpls.2015.00171
- Hillwig, M. S., Chiozza, M., Casteel, C. L., Lau, S. T., Hohenstein, J., Hernández, E., et al. (2016). Abscisic acid deficiency increases defence responses against *Myzus persicae* in *Arabidopsis*. *Mol. Plant Pathol.* 17, 225–235. doi: 10.1111/mpp.12274

- Hogenhout, S. A., and Bos, J. I. B. (2011). Effector proteins that modulate plant-insect interactions. *Curr. Opin. Plant Biol* 14, 422–428. doi: 10.1016/j.pbi.2011.05.003
- Howe, G. A. (2004). Jasmonates as signals in the wound response. *J. Plant Growth Regul.* 23, 223–237. doi: 10.1007/s00344-004-0030-6
- Howe, G. A., and Jander, G. (2008). Plant immunity to insect herbivores. *Annu. Rev. Plant Biol.* 59, 41–66. doi: 10.1146/annurev.arplant.59.032607.092825
- Jaouannet, M., Rodriguez, P. A., Thorpe, P., Lenoir, C. J. G., Macleod, R., Escudero-Martinez, C., et al. (2014). Plant immunity in plant-aphid interactions. *Front. Plant Sci.* 5:663. doi: 10.3389/fpls.2014.00663
- Jaquiere, J., Stoeckel, S., Nouhaud, P., Mieuze, L., Maheo, F., Legeai, F., et al. (2012). Genome scans reveal candidate regions involved in the adaptation to host plant in the pea aphid complex. *Mol. Ecol.* 21, 5251–5264. doi: 10.1111/mec.12048
- Jiang, C.-J., Shimono, M., Sugano, S., Kojima, M., Yazawa, K., Yoshida, R., et al. (2010). Abscisic acid interacts antagonistically with salicylic acid signaling pathway in rice–*Magnaporthe grisea* interaction. *Mol. Plant Microbe Interact.* 23, 791–798. doi: 10.1094/MPMI-23-6-0791
- Jimenez-Aleman, G. H., Machado, R. A. R., Gorls, H., Baldwin, I. T., and Boland, W. (2015). Synthesis, structural characterization and biological activity of two diastereomeric JA-Ile macrolactones. *Organ. Biomol. Chem.* 13, 5885–5893. doi: 10.1039/C5OB00362H
- Kaloshian, I., and Walling, L. L. (2016). Hemipteran and dipteran pests: effectors and plant host immune regulators. *J. Integr. Plant Biol.* 58, 350–361. doi: 10.1111/jipb.12438
- Kamphuis, L. G., Zulak, K., Gao, L.-L., Anderson, J., and Singh, K. B. (2013). Plant-aphid interactions with a focus on legumes. *Funct. Plant Biol.* 40, 1271–1284. doi: 10.1071/FP13090
- Kanobe, C., Mccarville, M. T., O'Neal, M. E., Tylka, G. L., and Macintosh, G. C. (2015). Soybean aphid infestation induces changes in fatty acid metabolism in soybean. *PLoS ONE* 10:e0145660. doi: 10.1371/journal.pone.0145660
- Karsen, C. M., Brinkhorst-Van Der Swan, D. L. C., Breekland, A. E., and Koornneef, M. (1983). Induction of dormancy during seed development by endogenous abscisic acid: studies on abscisic acid deficient genotypes of *Arabidopsis thaliana* (L.) Heynh. *Planta* 157, 158–165. doi: 10.1007/BF00393650
- Koo, A. J., and Howe, G. A. (2012). Catabolism and deactivation of the lipid-derived hormone jasmonoyl-isoleucine. *Front. Plant Sci.* 3:19. doi: 10.3389/fpls.2012.00019
- Koo, A. J., Thireault, C., Zemelis, S., Poudel, A. N., Zhang, T., Kitaoka, N., et al. (2014). Endoplasmic reticulum-associated inactivation of the hormone jasmonoyl-L-isoleucine by multiple members of the cytochrome P450 94 family in *Arabidopsis*. *J. Biol. Chem.* 289, 29728–29738. doi: 10.1074/jbc.M114.603084
- Koornneef, A., Leon-Reyes, A., Ritsema, T., Verhage, A., Den Otter, F. C., Van Loon, L. C., et al. (2008). Kinetics of salicylate-mediated suppression of jasmonate signaling reveal a role for redox modulation. *Plant Physiol.* 147, 1358–1368. doi: 10.1104/pp.108.121392
- Koornneef, A., and Pieterse, C. M. J. (2008). Cross talk in defense signaling. *Plant Physiol.* 146, 839–844. doi: 10.1104/pp.107.112029
- Kramell, R., Schmidt, J., Schneider, G., Sembdner, G., and Schreiber, K. (1988). Synthesis of N-(jasmonyl)amino acid conjugates. *Tetrahedron* 44, 5791–5807. doi: 10.1016/S0040-4020(01)81437-X
- Kusnierczyk, A., Winge, P., Jorstad, T. S., Troczynska, J., Rossiter, J. T., and Bones, A. M. (2008). Towards global understanding of plant defence against aphids - timing and dynamics of early *Arabidopsis* defence responses to cabbage aphid (*Brevicoryne brassicae*) attack. *Plant Cell Environ.* 31, 1097–1115. doi: 10.1111/j.1365-3040.2008.01823.x
- Leon-Reyes, A., Does, D., Lange, E., Delker, C., Wasternack, C., Wees, S. M., et al. (2010). Salicylate-mediated suppression of jasmonate-responsive gene expression in *Arabidopsis* is targeted downstream of the jasmonate biosynthesis pathway. *Planta* 232, 1423–1432. doi: 10.1007/s00425-010-1265-z
- Li, Q., Xie, Q. G., Smith-Becker, J., Navarre, D. A., and Kaloshian, I. (2006). Mi-1-mediated aphid resistance involves salicylic acid and mitogen-activated protein kinase signaling cascades. *Mol. Plant Microbe Interact.* 19, 655–664. doi: 10.1094/MPMI-19-0655
- Liu, X., Meng, J., Starkey, S., and Smith, C. M. (2011). Wheat gene expression is differentially affected by a virulent russian wheat aphid biotype. *J. Chem. Ecol.* 37, 472–482. doi: 10.1007/s10886-011-9949-9
- Mai, V. C., Bednarski, W., Borowiak-Sobkowiak, B., Wilkaniec, B., Samardakiewicz, S., and Morkunas, I. (2013). Oxidative stress in pea seedling leaves in response to *Acyrtosiphon pisum* infestation. *Phytochemistry* 93, 49–62. doi: 10.1016/j.phytochem.2013.02.011
- Mai, V. C., Drzewiecka, K., Jelen, H., Narożna, D., Rucińska-Sobkowiak, R., Kęsy, J., et al. (2014). Differential induction of *Pisum sativum* defense signaling molecules in response to pea aphid infestation. *Plant Sci.* 22, 1–12. doi: 10.1016/j.plantsci.2014.01.011
- Mauch-Mani, B., and Mauch, F. (2005). The role of abscisic acid in plant-pathogen interactions. *Curr. Opin. Plant Biol.* 8, 409–414. doi: 10.1016/j.pbi.2005.05.015
- Miersch, O., Neumerkel, J., Dippe, M., Stenzel, I., and Wasternack, C. (2008). Hydroxylated jasmonates are commonly occurring metabolites of jasmonic acid and contribute to a partial switch-off in jasmonate signaling. *New Phytol.* 177, 114–127.
- Moran, P. J., and Thompson, G. A. (2001). Molecular responses to aphid feeding in *Arabidopsis* in relation to plant defense pathways. *Plant Physiol.* 125, 1074–1085. doi: 10.1104/pp.125.2.1074
- Morkunas, I., Mai, V. C., and Gabrys, B. (2011). Phytohormonal signaling in plant responses to aphid feeding. *Acta Physiol. Plant.* 33, 2057–2073. doi: 10.1007/s11738-011-0751-7
- Mur, L. A. J., Kenton, P., Atzorn, R., Miersch, O., and Wasternack, C. (2006). The outcomes of concentration-specific interactions between salicylate and jasmonate signaling include synergy, antagonism, and oxidative stress leading to cell death. *Plant Physiol.* 140, 249–262. doi: 10.1104/pp.105.072348
- Mutti, N. S., Louis, J., Pappan, L. K., Pappan, K., Begum, K., Chen, M.-S., et al. (2008). A protein from the salivary glands of the pea aphid, *Acyrtosiphon pisum*, is essential in feeding on a host plant. *Proc. Natl. Acad. Sci. U.S.A.* 105, 9965–9969. doi: 10.1073/pnas.0708958105
- Mutti, N. S., Park, Y., Reese, J. C., and Reeck, G. R. (2006). RNAi knockdown of a salivary transcript leading to lethality in the pea aphid, *Acyrtosiphon pisum*. *J. Insect Sci.* 6, 1–7. doi: 10.1673/031.006.3801
- Nakamura, Y., Mithofer, A., Kombrink, E., Boland, W., Hamamoto, S., Uozumi, N., et al. (2011). 12-Hydroxyjasmonic acid glucoside is a COI1-JAZ-independent activator of leaf-closing movement in *Samanea saman*. *Plant Physiol.* 155, 1226–1236. doi: 10.1104/pp.110.168617
- Nomura, K., Melotto, M., and He, S.-Y. (2005). Suppression of host defense in compatible plant–*Pseudomonas syringae* interactions. *Curr. Opin. Plant Biol.* 8, 361–368. doi: 10.1016/j.pbi.2005.05.005
- Peccoud, J., Maheo, F., De La Huerta, M., Laurence, C., and Simon, J.-C. (2015). Genetic characterisation of new host-specialised biotypes and novel associations with bacterial symbionts in the pea aphid complex. *Insect Conserv. Divers.* 8, 484–492. doi: 10.1111/icad.12131
- Peccoud, J., Ollivier, A., Plantegenest, M., and Simon, J.-C. (2009a). A continuum of genetic divergence from sympatric host races to species in the pea aphid complex. *Proc. Natl. Acad. Sci. U.S.A.* 106, 7495–7500. doi: 10.1073/pnas.081117106
- Peccoud, J., Simon, J. C., McLaughlin, H. J., and Moran, N. A. (2009b). Post-Pleistocene radiation of the pea aphid complex revealed by rapidly evolving endosymbionts. *Proc. Natl. Acad. Sci. U.S.A.* 106, 16315–16320. doi: 10.1073/pnas.0905129106
- Pieterse, C. M. J., Leon-Reyes, A., Van Der Ent, S., and Van Wees, S. C. M. (2009). Networking by small-molecule hormones in plant immunity. *Nat. Chem. Biol.* 5, 308–316. doi: 10.1038/nchembio.164
- Pieterse, C. M. J., Van Der Does, D., Zamioudis, C., Leon-Reyes, A., and Van Wees, S. C. M. (2012). Hormonal modulation of plant immunity. *Annu. Rev. Cell Dev. Biol.* 28, 489–521. doi: 10.1146/annurev-cellbio-092910-154055
- Pinheiro, J., Bates, D., Debroy, S., Sarkar, D., and R Core Team (2015). *Nlme: Linear and Nonlinear Mixed Effects Models R package*. Version 3.1–122. Available at: <http://cran.r-project.org/web/packages/nlme/index.html>
- Pitino, M., Coleman, A. D., Maffei, M. E., Ridout, C. J., and Hogenhout, S. A. (2011). Silencing of aphid genes by dsRNA feeding from plants. *PLoS ONE* 6:e25709. doi: 10.1371/journal.pone.0025709
- Pitino, M., and Hogenhout, S. A. (2013). Aphid protein effectors promote aphid colonization in a plant species-specific manner. *Mol. Plant Microbe Interact.* 26, 130–139. doi: 10.1094/MPMI-07-12-0172-FI

- R Development Core Team (2015). *R: A language and Environment for Statistical Computing*. Vienna: R Foundation for Statistical Computing.
- Schenk, P. M., Kazan, K., Wilson, I., Anderson, J. P., Richmond, T., Somerville, S. C., et al. (2000). Coordinated plant defense responses in *Arabidopsis* revealed by microarray analysis. *Proc. Natl. Acad. Sci. U.S.A.* 97, 11655–11660. doi: 10.1073/pnas.97.21.11655
- Schroeder, J. I., Kwak, J. M., and Allen, G. J. (2001). Guard cell abscisic acid signalling and engineering drought hardiness in plants. *Nature* 410, 327–330. doi: 10.1038/35066500
- Schwarzkopf, A., Rosenberger, D., Niebergall, M., Gershenzon, J., and Kunert, G. (2013). To feed or not to feed: plant factors located in the epidermis, mesophyll, and sieve elements influence pea aphid's ability to feed on legume species. *PLoS ONE* 8:e75298. doi: 10.1371/journal.pone.0075298
- Shabab, M., Khan, S. A., Vogel, H., Heckel, D. G., and Boland, W. (2014). OPDA isomerase GST16 is involved in phytohormone detoxification and insect development. *FEBS J.* 281, 2769–2783. doi: 10.1111/febs.12819
- Simon, J.-C., D'Alencon, E., Guy, E., Jacquin-Joly, E., Jaquiere, J., Nouhaud, P., et al. (2015). Genomics of adaptation to host-plants in herbivorous insects. *Brief. Funct. Genom.* 14, 413–423. doi: 10.1093/bfpg/evl015
- Smith, C. M., and Boyko, E. V. (2007). The molecular bases of plant resistance and defense responses to aphid feeding: current status. *Entomol. Exp. Appl.* 122, 1–16. doi: 10.1111/j.1570-7458.2006.00503.x
- Stewart, S. A., Hodge, S., Bennett, M., Mansfield, J. W., and Powell, G. (2016). Aphid induction of phytohormones in *Medicago truncatula* is dependent upon time post-infestation, aphid density and the genotypes of both plant and insect. *Arthropod Plant Interact.* 10, 41–53. doi: 10.1007/s11829-015-9406-8
- Stitz, M., Gase, K., Baldwin, I. T., and Gaquerel, E. (2011). Ectopic expression of AtJMT in *Nicotiana attenuata*: creating a metabolic sink has tissue-specific consequences for the jasmonate metabolic network and silences downstream gene expression. *Plant Physiol.* 157, 341–354. doi: 10.1104/pp.111.178582
- Studham, M. E., and Macintosh, G. C. (2013). Multiple phytohormone signals control the transcriptional response to soybean aphid infestation in susceptible and resistant soybean plants. *Mol. Plant Microbe Interact.* 26, 116–129. doi: 10.1094/MPMI-05-12-0124-FI
- Sun, Y., Guo, H., Yuan, L., Wei, J., Zhang, W., and Ge, F. (2015). Plant stomatal closure improves aphid feeding under elevated CO₂. *Global Change Biol.* doi: 10.1111/gcb.12858 [Epub ahead of print].
- Takemoto, H., Uefune, M., Ozawa, R., Arimura, G.-I., and Takabayashi, J. (2013). Previous infestation of pea aphids *Acyrtosiphon pisum* on broad bean plants resulted in the increased performance of conspecific nymphs on the plants. *J. Plant Interact.* 8, 370–374. doi: 10.1080/17429145.2013.786792
- The International Aphid Genomics Consortium (2010). Genome sequence of the pea aphid *Acyrtosiphon pisum*. *PLoS Biol.* 8:e1000313. doi: 10.1371/journal.pbio.1000313
- Ton, J., Flors, V., and Mauch-Mani, B. (2009). The multifaceted role of ABA in disease resistance. *Trends Plant Sci.* 14, 310–317. doi: 10.1016/j.tplants.2009.03.006
- Van Der Does, D., Leon-Reyes, A., Koornneef, A., Van Verk, M. C., Rodenburg, N., Pauwels, L., et al. (2013). Salicylic acid suppresses jasmonic acid signaling downstream of SCFCO11-JAZ by targeting GCC promoter motifs via transcription factor ORA59. *Plant Cell* 25, 744–761. doi: 10.1105/tpc.112.108548
- Vandermoten, S., Harmel, N., Mazzucchelli, G., De Pauw, E., Haubruge, E., and Francis, F. (2014). Comparative analyses of salivary proteins from three aphid species. *Insect Mol. Biol.* 23, 67–77. doi: 10.1111/imb.12061
- Varenhorst, A. J., Mccarville, M. T., and O'Neal, M. E. (2015). Determining the duration of *Aphis glycines* (Hemiptera: Aphididae) induced susceptibility effect in soybean. *Arthropod. Plant Interact.* 9, 457–464. doi: 10.1007/s11829-015-9395-7
- Walling, L. L. (2008). Avoiding effective defenses: strategies employed by phloem-feeding insects. *Plant Physiol.* 146, 859–866. doi: 10.1104/pp.107.113142
- Wang, W., Dai, H., Zhang, Y., Chandrasekar, R., Luo, L., Hiromasa, Y., et al. (2015). Armet is an effector protein mediating aphid-plant interactions. *FASEB J.* 29, 2032–2045. doi: 10.1096/fj.14-266023
- Wasternack, C., and Hause, B. (2013). Jasmonates: biosynthesis, perception, signal transduction and action in plant stress response, growth and development. An update to the 2007 review in *Annals of Botany*. *Ann. Bot.* 111, 1021–1058.
- Will, T., Furch, A. C. U., and Zimmermann, M. R. (2013). How phloem-feeding insects face the challenge of phloem-located defenses. *Front. Plant Sci.* 4:336. doi: 10.3389/fpls.2013.00336
- Will, T., Tjallingii, W. F., Thonnessen, A., and Van Bel, A. J. E. (2007). Molecular sabotage of plant defense by aphid saliva. *Proc. Natl. Acad. Sci. U.S.A.* 104, 10536–10541. doi: 10.1073/pnas.0703535104
- Wu, J., and Baldwin, I. T. (2010). New insights into plant responses to the attack from insect herbivores. *Annu. Rev. Genet.* 44, 1–24. doi: 10.1146/annurev-genet-102209-163500
- Yasuda, M., Ishikawa, A., Jikumaru, Y., Seki, M., Umezawa, T., Asami, T., et al. (2008). Antagonistic interaction between systemic acquired resistance and the abscisic acid-mediated abiotic stress response in *Arabidopsis*. *Plant Cell* 20, 1678–1692. doi: 10.1105/tpc.107.054296
- Yu, S.-M., Lo, S.-F., and Ho, T.-H. D. (2015). Source-sink communication: regulated by hormone, nutrient, and stress cross-signaling. *Trends Plant Sci.* 20, 844–857. doi: 10.1016/j.tplants.2015.10.009
- Zhang, P.-J., Li, W.-D., Huang, F., Zhang, J.-M., Xu, F.-C., and Lu, Y.-B. (2013). Feeding by whiteflies suppresses downstream jasmonic acid signaling by eliciting salicylic acid signaling. *J. Chem. Ecol.* 39, 612–619. doi: 10.1007/s10886-013-0283-2
- Zhang, P.-J., Zheng, S.-J., Van Loon, J. J. A., Boland, W., David, A., Mumm, R., et al. (2009). Whiteflies interfere with indirect plant defense against spider mites in Lima bean. *Proc. Natl. Acad. Sci. U.S.A.* 106, 21202–21207. doi: 10.1073/pnas.0907890106
- Zhang, X., Xue, M., and Zhao, H. (2015). Species-specific effects on salicylic acid content and subsequent *Myzus persicae* (Sulzer) performance by three phloem-sucking insects infesting *Nicotiana tabacum* L. *Arthropod Plant Interact.* 9, 383–391. doi: 10.1007/s11829-015-9385-9
- Züst, T., and Agrawal, A. A. (2016). Mechanisms and evolution of plant resistance to aphids. *Nat. Plants* 2:15206. doi: 10.1038/nplants.2015.206
- Zuur, A., Fleno, E. N., Walker, N., Saveliev, A., and Smith, G. M. (2009). *Mixed Effects Models and Extensions in Ecology with R*. New York, NY: Springer.

Conflict of Interest Statement: The authors declare that the research was conducted in the absence of any commercial or financial relationships that could be construed as a potential conflict of interest.

Copyright © 2016 Sanchez-Arcos, Reichelt, Gershenzon and Kunert. This is an open-access article distributed under the terms of the Creative Commons Attribution License (CC BY). The use, distribution or reproduction in other forums is permitted, provided the original author(s) or licensor are credited and that the original publication in this journal is cited, in accordance with accepted academic practice. No use, distribution or reproduction is permitted which does not comply with these terms.