



Genome-wide analysis and expression profiling suggest diverse roles of *GH3* genes during development and abiotic stress responses in legumes

Vikash K. Singh, Mukesh Jain and Rohini Garg*

Functional and Applied Genomics Laboratory, National Institute of Plant Genome Research, New Delhi, India

Edited by:

Jun Yu, Beijing Institute of Genomics, China

Reviewed by:

Swarup Kumar Parida, National Institute of Plant Genome Research, India

M. Awais Khan, International Potato Center, Peru

*Correspondence:

Rohini Garg, Functional and Applied Genomics Laboratory, National Institute of Plant Genome Research, New Delhi 110067, India
email: rohini@nipgr.ac.in

Growth hormone auxin regulates various cellular processes by altering the expression of diverse genes in plants. Among various auxin-responsive genes, *GH3* genes maintain endogenous auxin homeostasis by conjugating excess of auxin with amino acids. *GH3* genes have been characterized in many plant species, but not in legumes. In the present work, we identified members of *GH3* gene family and analyzed their chromosomal distribution, gene structure, gene duplication and phylogenetic analysis in different legumes, including chickpea, soybean, *Medicago*, and *Lotus*. A comprehensive expression analysis in different vegetative and reproductive tissues/stages revealed that many of *GH3* genes were expressed in a tissue-specific manner. Notably, chickpea *CaGH3-3*, soybean *GmGH3-8* and *-25*, and *Lotus LjGH3-4*, *-5*, *-9* and *-18* genes were up-regulated in root, indicating their putative role in root development. In addition, chickpea *CaGH3-1* and *-7*, and *Medicago MtGH3-7*, *-8*, and *-9* were found to be highly induced under drought and/or salt stresses, suggesting their role in abiotic stress responses. We also observed the examples of differential expression pattern of duplicated *GH3* genes in soybean, indicating their functional diversification. Furthermore, analyses of three-dimensional structures, active site residues and ligand preferences provided molecular insights into function of *GH3* genes in legumes. The analysis presented here would help in investigation of precise function of *GH3* genes in legumes during development and stress conditions.

Keywords: gene family, *GH3* genes, legumes, RNA-seq, homology modeling, substrate specificities

INTRODUCTION

Auxin is an important phytohormone which regulates various aspects of plant growth and development. Most of these processes are regulated by auxin-responsive genes, namely auxin/indole-3-acetic acid (Aux/IAA), auxin-response factor (ARF), small auxin-up RNAs (SAUR) and Gretchen Hagen3 (GH3; Hagen and Guilfoyle, 2002). Auxin-responsiveness to these genes is conferred by auxin-responsive elements (AuxREs, TGTCTC) present in their promoters (Hagen et al., 1991; Li et al., 1994; Ulmasov et al., 1995; Hagen and Guilfoyle, 2002). To understand molecular mechanism of auxin action, several auxin-responsive genes have been isolated and characterized from many plant species, such as pea, soybean, tobacco, and cucumber (Hagen and Guilfoyle, 2002).

Gretchen Hagen3 family of proteins maintain auxin level by catalyzing conjugation of amino acids with indole-3-acetic acid, salicylic acid (SA), and jasmonic acid (JA; Staswick et al., 2002, 2005). The first *GH3* gene was identified by Hagen et al. (1984) as an early auxin-responsive gene in soybean. Since then, a large number of *GH3* homologs have been identified in numerous plant species ranging from mosses to angiosperms (Jain et al., 2006; Terol et al., 2006; Ludwig-Müller et al., 2008; Kumar et al., 2012; Yuan et al., 2013). The studies on *GH3* proteins have revealed their regulatory function in plant growth, organ development, light signaling, abiotic stress tolerance, and plant defense responses

(Woodward and Bartel, 2005; Park et al., 2007; Jain and Khurana, 2009; Ludwig-Müller, 2011; Du et al., 2012; Kumar et al., 2012; Yuan et al., 2013). In *Arabidopsis*, *GH3* gene family has been classified into three groups (I–III) based on sequence similarity and substrate specificities (Staswick et al., 2002). Group I *GH3* proteins of *Arabidopsis* are JA-amido synthetases (Staswick et al., 2002, 2005). *AtGH3-11*, a group I *GH3* protein, was characterized based on analysis of *jar1* mutant, which was insensitive to JA and was required for the formation of bioactive jasmonate JA-isoleucine (Staswick et al., 2002). A different allele of this gene (*FIN219*) was identified as a phytochrome A signaling component, having crucial role in photomorphogenesis (Hsieh et al., 2000). Group II *GH3* proteins of *Arabidopsis* are involved in conjugation of IAA to various amino acids (Staswick et al., 2002, 2005). *AtGH3-2* gain-of-function mutant, *Ydk1-D*, was shown to be responsible for short primary root, reduced lateral root number, and apical dominance (Takase et al., 2004). In another report *AtGH3-6* mutant, *dfl1*, was shown to regulate shoot elongation and lateral root formation negatively, but positively regulate the light responses to hypocotyl length (Nakazawa et al., 2001). Some Group II *GH3* proteins of rice (TLD1/OsGH3-13, OsGH3-2, and OsGH3-8) have also been characterized that conjugate IAA with aspartate or alanine (Chen et al., 2009, 2010; Zhang et al., 2009). A gain-of-function mutant of rice *OsGH3-13* gene, *tld1-D*, resulted in increased tillers, enlarged leaf angles, dwarfism and

improved drought tolerance (Zhang et al., 2009). AtGH3-12/PBS3 is the only characterized member of group III, which catalyzes the conjugation of glutamic acid (Glu) to 4-aminobenzoate and 4-hydroxybenzoate and is involved in SA signaling (Jagadeeswaran et al., 2007; Nobuta et al., 2007; Okrent et al., 2009). Recently, the crystal structure and mechanism of catalytic action of AtGH3-12 and JAR1/AtGH3-11 (Westfall et al., 2012) in *Arabidopsis*, and VvGH3-1 in grapevine (Peat et al., 2012) have also been reported.

Legumes are nutritionally important crop plants, which serve as a rich source of proteins and fibers. Although the first auxin-responsive gene was identified from soybean (Hagen et al., 1984), genome-wide analysis of *GH3* genes in legumes is still lacking. This may be attributed to scarcity of genomic resources for legumes until recently. However, in recent years several genomic resources have been generated for various legumes. The genome and transcriptome sequences of desi and kabuli chickpea (*Cicer arietinum*), soybean (*Glycine max*), *Medicago* (*Medicago truncatula*), and *Lotus* (*Lotus japonicus*) have been published (Sato et al., 2008; Schmutz et al., 2010; Garg et al., 2011; Young et al., 2011; Jain et al., 2013; Varshney et al., 2013). The availability of genome annotation provides an opportunity for characterization of *GH3* gene family in legumes, which can help in better understanding of their function in various cellular processes. The availability of crystal structures of *GH3* proteins (Peat et al., 2012; Westfall et al., 2012) provides a resource to identify substrate specificity determining motifs/residues in the *GH3* proteins, which can help in understanding auxin-mediated regulation of cellular processes in legumes.

Here, we performed genome-wide identification and analysis of *GH3* gene family in four legume species, including chickpea, soybean, *Medicago*, and *Lotus*. We report their genomic organization, chromosomal distribution, sequence homology, and phylogenetic relationship in/among different legumes. Comprehensive gene expression analyses in various tissues/stages and abiotic stress conditions have also been performed to gain insight into their putative function. Putative promoter sequences of the *GH3* genes were also analyzed for identification of *cis*-regulatory elements, which may be involved in various development processes and stress responses. In addition, their ligand preferences were predicted based on the protein structure and sequence analysis. These data provide a framework for further in-depth functional analyses of *GH3* genes in legumes.

MATERIAL AND METHODS

IDENTIFICATION OF *GH3* GENES

Chickpea genome annotation was downloaded from Chickpea Genome Analysis Project (CGAP v1.0; Jain et al., 2013), soybean and *Medicago* genome annotations were downloaded from Phytozome (v9.0¹), and *Lotus* genome annotation was taken from miyakazusa.jp database (v2.5²). A total of 19 protein sequences of *GH3* family members of *Arabidopsis* and 13

protein sequences of rice *GH3* family members were downloaded from TAIR³ and RGAP database⁴, respectively. The rice and *Arabidopsis* *GH3* proteins were searched in chickpea, soybean, *Medicago* and *Lotus* proteomes individually, using BLASTP with an *e*-value cutoff of 1e-05. Further, the HMM profile of *GH3* domain was downloaded from pfam database⁵ and HMMER was used to search proteomes of chickpea, soybean, *Medicago*, and *Lotus* for *GH3* domain. All the tentative gene lists obtained from these two searches were combined to make a non-redundant gene list for each legume, and their protein sequences were searched in pfam database to confirm the presence of conserved *GH3* domain. Using the similar strategies, we investigated the chickpea transcriptome sequence (Garg et al., 2010) as well for identification of any additional *GH3* gene family member that may not be represented in chickpea genome annotation.

SEQUENCE ANALYSIS AND PHYLOGENETIC TREE CONSTRUCTION

Multiple sequence alignment of all the *GH3* protein sequences of chickpea, soybean, *Medicago* and *Lotus* with *Arabidopsis* *GH3* protein sequences was carried out using MAFFT and phylogenetic tree was constructed by UPGMA method using CLC Genomics Workbench (v4.7.2). Bootstrap analysis was performed by taking 1,000 replicates and the generated tree was viewed using FigTree (v1.3.1).

GENE DUPLICATION ANALYSIS

Synteny analysis was performed using Plant Genome Duplication Database⁶. Syntenic blocks were evaluated using Circos tool. Information about the chromosome locations was obtained from Phytozome database. Genes were regarded as segmentally duplicated if they found to be coparalogs located on duplicated blocks, as proposed by Wei et al. (2007). Tandem duplication was characterized as multiple genes of one family located within the same or neighboring intergenic region (Du et al., 2013a).

PROMOTER SEQUENCE ANALYSIS

Genomic co-ordinates of coding sequences were determined using GFF files obtained from chickpea and soybean genome annotation. The regions of 2,000 bp upstream from start codon were extracted from genomic DNA sequences. *Cis*-regulatory elements on both strands of promoter sequences were scanned using PLACE web server⁷.

HOMOLOGY MODELING

The 3-D protein structures of AtGH3-11 (Protein Data Bank code 4EPL; Westfall et al., 2012) and Vv-GH3-1 (Protein Data Bank code 4B2G; Peat et al., 2012) were downloaded from Protein Data Bank⁸. Phyre2 (Protein Homology/Analogy Recognition Engine⁹) was used for predicting the protein structure by homology

³<http://www.arabidopsis.org/>

⁴<http://rice.plantbiology.msu.edu/>

⁵<http://pfam.sanger.ac.uk/>

⁶<http://chibba.agtec.uga.edu/duplication/>

⁷<http://www.dna.affrc.go.jp/PLACE/>

⁸<http://www.rcsb.org/pdb/home/home.do>

⁹<http://www.sbg.bio.ic.ac.uk/phyre2>

¹<http://www.phytozome.net>

²<http://www.kazusa.or.jp/lotus/index.html>

modeling under 'intensive' mode (Kelley and Sternberg, 2009). The protein structures modeled with >90% confidence were selected. The core of predicted protein structure or allowed area in the plot showing the preferred region for psi/phi angles pair for residues was determined through Ramachandran plot using RAMPAGE server¹⁰ and models were viewed using Chimera (V1.9). Only those structures representing >95% of residues in favored region were considered for further analysis. For substrate binding site prediction, templates and model were superimposed using MatchMaker of Chimera (V1.9) and ligands were transferred on model from templates.

PLANT MATERIAL AND STRESS TREATMENTS

Chickpea (*C. arietinum* L. genotype ICC4958) seeds were grown in culture room and field for collection of various tissue samples. Mature leaf, young leaf, young pod, flower buds (FB), flower bud opened (FBO), unopened flowers (UOF), and mature flower (MF) were harvested from field grown plants. Root and shoot tissues were collected from 15-day-old chickpea seedlings grown in autoclaved mixture (1:1) of agropeat and vermiculite in plastic pots in the culture room maintained at 22 ± 1°C with a photoperiod of 14 h, as described (Garg et al., 2010). Germinating seedlings (GS) were collected after 5 days of seed germination on wet Whatman paper sheet in Petri dishes as described (Singh et al., 2013). Two stages of flower bud development (FB 4 mm and FBO 8–10 mm) were collected on the basis of size and morphological differences (Singh et al., 2013). Two stages of flower development, including young flower with closed petals (UOF) and MF with opened petals were also collected. For stress treatments, 10-day-old chickpea seedlings were kept in water for control, 150 mM solution of NaCl for salt stress, at 4°C for cold stress and between folds of tissue paper for desiccation stress. Root and shoot tissues were harvested separately after 5 h of treatments as described (Garg et al., 2010). All samples were quickly frozen into liquid nitrogen after harvesting and stored at -80°C till RNA isolation.

RNA ISOLATION AND QUANTITATIVE RT-PCR ANALYSIS

Total RNA was extracted using TRI reagent (Sigma Life Science, St. Louis, MO, USA) following the manufacturer's instructions. RNA quality and quantity was determined using Nanodrop 1000 spectrophotometer (Thermo Fisher Scientific, Wilmington, DE, USA). RNA samples with 260/280 ratio between 1.8 and 2.1 and 260/230 ratio between 2.0 and 2.5 were used for cDNA synthesis. Primers were designed for all genes using Primer Express (v3.0) software (Applied Biosystems, Foster City, CA, USA). Specificity of each pair of primers was determined via BLAST search. All the primer sequences used have been listed in Supplemental Table S1. For each tissue, at least two independent biological replicates and three technical replicates of each biological replicate were taken for the analysis. Real time PCR analysis was performed using the 7500 Detection System (Applied Biosystems) as described (Garg et al., 2010). The expression of *elongation factor-1 alpha* gene was used as internal control for normalization of sample input variance (Garg et al., 2010).

¹⁰<http://mordred.bioc.cam.ac.uk/~rapper/rampage.php>

RNA-seq AND MICROARRAY DATA ANALYSIS

The expression patterns of chickpea and soybean *GH3* genes were analyzed using RNA-seq data from various tissue/stages of development. For chickpea, we mapped our RNA-seq data (Singh et al., 2013) on the genome using TopHat (v2.0.6), assembled with Cufflinks (v2.1.1), and merged with Cuffmerge to estimate read count in FPKM. For soybean, normalized gene expression data (RPKM) was downloaded from SoySeq¹¹. *Medicago* and *Lotus GH3* gene expression data were downloaded from MtGEA¹² and LjGEA¹³, respectively. Probsets corresponding to *MtGH3* and *LjGH3* genes were identified using BLASTN search with best hits.

RESULTS AND DISCUSSION

GH3 GENE FAMILY IN LEGUMES

The availability of genome sequences provides an opportunity to identify and analyze GH3 gene family in legumes. We investigated members of GH3 gene family in four legumes, including chickpea, soybean, *Medicago*, and *Lotus*, using two strategies, BLASTP and HMM profile search. For chickpea, we selected genome sequence of desi genotype (ICC4958), because of the availability of comprehensive expression (RNA-seq) data from various tissues/developmental stages (Jain et al., 2013) and abiotic stress conditions (Garg et al., 2014), which can provide better insights into the functions of *GH3* genes (as described in latter sections). The GH3 gene family members identified via these two searches were combined and a unique gene list was obtained for each legume species. In total, 11, 28, 10, and 18 *GH3* gene members were identified in chickpea, soybean, *Medicago* and *Lotus*, respectively, after analyzing their protein sequences in pfam database for the presence of conserved GH3 domain. To identify additional members of GH3 gene family in chickpea, which may not be represented in the genome annotation, the published chickpea transcriptome (Garg et al., 2011) was also analyzed using similar strategies. This resulted in the identification of one additional GH3 gene family member for a total of 12 in chickpea. A list of *GH3* genes and their identifiers in different legumes along with their genomic co-ordinates is given in Supplemental Table S2.

The number of GH3 proteins identified in chickpea, *Medicago* and *Lotus* were comparable to *Arabidopsis* (10; excluding group III members, which are exclusively present in *Arabidopsis*), rice (13), tomato (15), and sorghum (16; Jain et al., 2006; Wang et al., 2010; Kumar et al., 2012). Whereas, the number of GmGH3 proteins are found to be approximately double as compared to other legume plants. The soybean genome has undergone two rounds of whole genome duplication, including an ancient duplication prior to the divergence of papilionoids (58–60 Mya) and a soybean-specific duplication that is estimated to have occurred ~13 Mya (Schmutz et al., 2010), which might have resulted into duplication of members of this gene family.

GENOMIC ORGANIZATION AND CHROMOSOMAL DISTRIBUTION

All GH3 proteins identified in legumes showed the presence of characteristic GH3 domain, and sequence conservation in the core

¹¹<http://soybase.org/soyseq/>

¹²<http://mtgea.noble.org/v3/>

¹³<http://ljgea.noble.org/v2/>

region in multiple sequence alignment of proteins. The gene structure (exon–intron organization) analysis of *CaGH3* and *GmGH3* genes revealed that number of introns varied from one to four except for *CaGH3-11* and *GmGH3-24*, which do not have any intron (Figure 1). Most of the *CaGH3* and *GmGH3* had similar intron-phasing distribution (Figure 1) and followed the pattern reported earlier for rice *GH3* genes (Jain et al., 2006). Next, we analyzed the distribution of *GH3* genes on the chromosomes in different legumes. Only two *CaGH3* genes could be located on the linkage groups, whereas others were located on scaffolds (Supplemental Table S2). This may be due to availability of incomplete draft genome sequence and unanchored scaffold as of now (Jain et al., 2013). For soybean, all the 28 *GmGH3* genes were distributed on 14 of 20 chromosomes, with six *GH3* genes located on chromosome 12, four and three being present on chromosome 6 and 13, respectively, two each on chromosome 2, 3, 15, and 17, and one each on chromosome 1, 5, 7, 10, 11, 16, and 19 (Supplemental Table S2). In soybean, many *GH3* genes were clustered, such as adjacent genes on chromosome 6 (*GmGH3-7*, -8, -9, and -10), chromosome 12 (*GmGH3-14* and -15, and *GmGH3-17*, -18 and -19), chromosome 13 (*GmGH3-20*, -21, and -22), and chromosome 17 (*GmGH3-26* and -27). The amino acid sequences of these genes [GmGH3-7 to -10 (7–8% identity), GmGH3-14, and -15 (32% identity), GmGH3-17, -18, -19 (28–57% identity), GmGH3-20 to -22 (30–68%), and GmGH3-26 and -27 (70% identity)] showed very low (7%) to high (70%) similarity

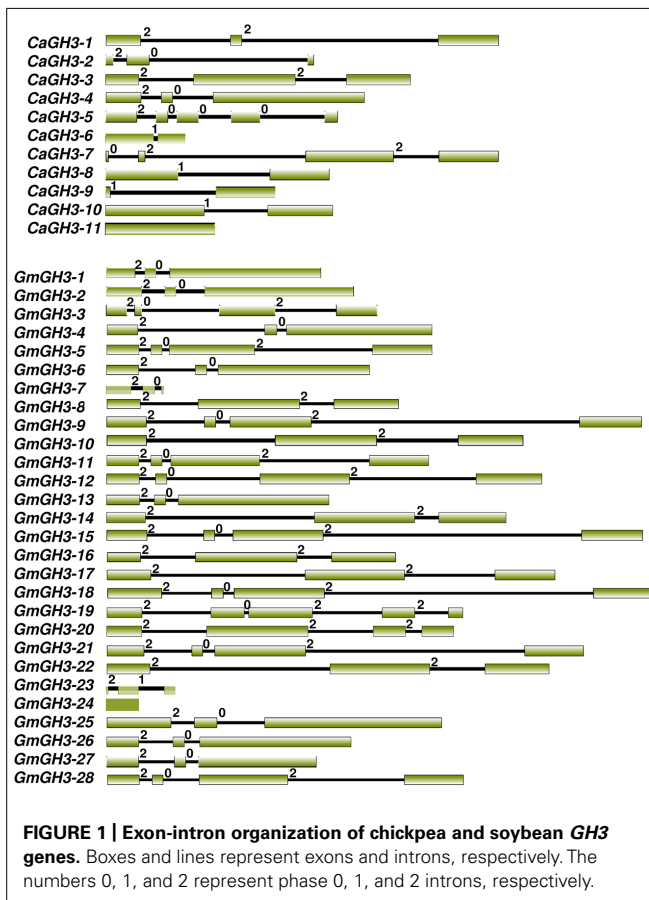
(Supplemental Table S3B), indicating that these *GmGH3* genes probably resulted from tandem duplication and some of them diverged during course of evolution. In *Medicago*, 7 of 10 *GH3* genes were distributed on 5 of 8 chromosomes and three *MtGH3* genes were located on scaffolds (Supplemental Table S2). Chromosome 5 and 8 of *Medicago* harbored two *MtGH3* genes each and one each resided on chromosome 2, 3, and 7. In *Lotus*, out of 18 *LjGH3* genes, only eight were located on 4 of 6 chromosomes; three located on chromosome 3, two each on chromosomes 2 and 4, and one on chromosome 1 (Supplemental Table S2). Altogether, it appears that tandem gene duplication resulted in the amplification of *GH3* gene family members in legumes and low homology between them suggested their divergence during course of evolution.

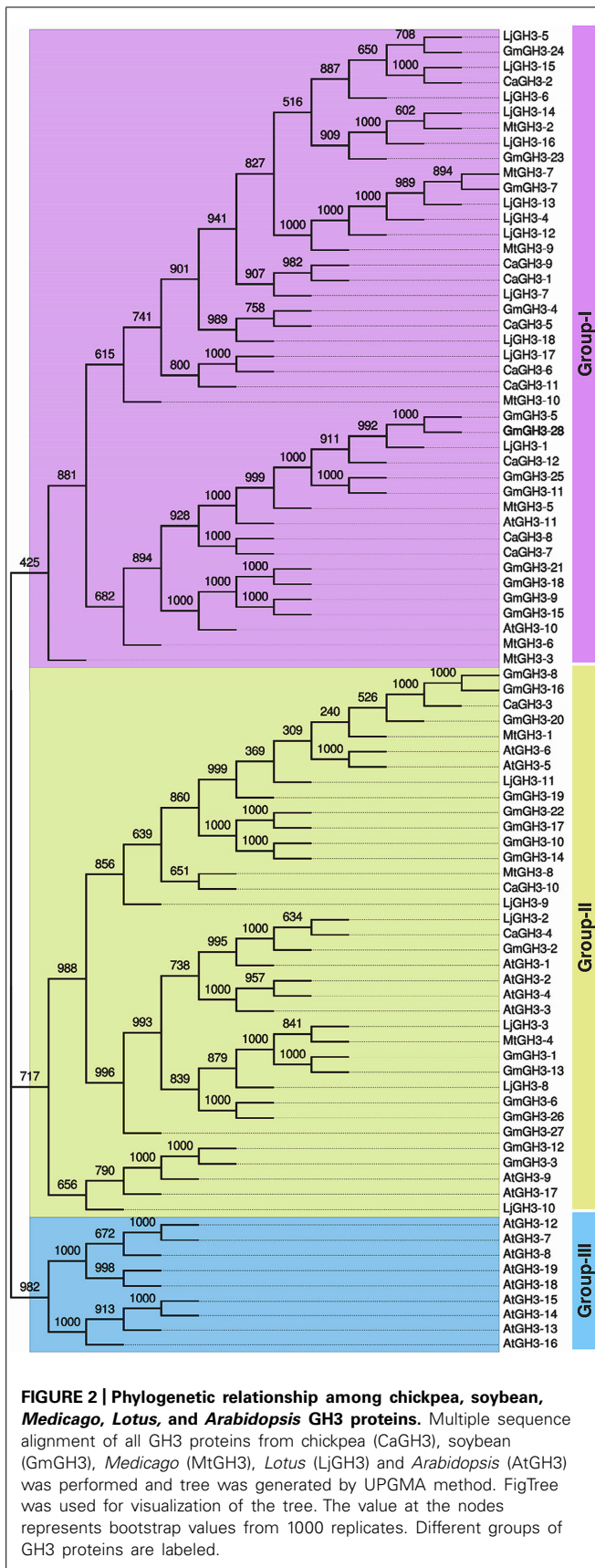
SEQUENCE ANALYSIS AND PHYLOGENETIC RELATIONSHIP

Pairwise analysis of the full-length protein sequences of chickpea and soybean *GH3* proteins showed very high homology, 76.9% between paralogous pair, *CaGH3-7* and *CaGH3-8* (Figure 2; Supplemental Table S3A), and 97.4% between paralogous pair, *GmGH3-8* and *GmGH3-16* (Figure 2; Supplemental Table S3B). Such high homologies suggest that they may perform similar functions (Jain et al., 2006).

In *Arabidopsis*, *GH3* proteins have been classified into three groups on the basis of sequence similarity and specificity to adenylate plant hormones (Staswick et al., 2002). We also analyzed the phylogenetic relationship among *GH3* proteins identified in legumes and classified them into different groups. Phylogenetic analysis of legume *GH3* proteins showed clustering into only two groups, I and II. Group III *GH3* proteins were found absent in all the legumes (Figure 2). This observation is consistent to previous reports (Jain et al., 2006; Kumar et al., 2012; Yuan et al., 2013) and suggested that group III *GH3* proteins might have been lost in legumes during the course of evolution. The group I consisted of nine members of *CaGH3* proteins, 12 *GmGH3* proteins, seven *MtGH3* proteins, and 12 *LjGH3* proteins (Figure 2). Group II included three *CaGH3* proteins, 16 *GmGH3* proteins, three *MtGH3* proteins, and six *LjGH3* proteins (Figure 2).

Phylogenetic tree comprising *CaGH3*, *GmGH3*, *MtGH3*, *LjGH3*, and *AtGH3* proteins showed a total of 26 sister pairs. Group I comprised of 12 sister pairs, four of *GmGH3*-*GmGH3* proteins, two each of *CaGH3*-*CaGH3* and *CaGH3*-*LjGH3* proteins, and one each of *CaGH3*-*GmGH3*, *GmGH3*-*MtGH3*, *GmGH3*-*LjGH3*, *MtGH3*-*LjGH3* proteins. Group II consisted of eleven sister pairs, including six *GmGH3*-*GmGH3* proteins, two each of *AtGH3*-*AtGH3* proteins, and one each of *CaGH3*-*MtGH3*, *CaGH3*-*LjGH3*, and *MtGH3*-*LjGH3* proteins. In Group III, three sister pairs of only *Arabidopsis* *GH3* proteins were present. To gain further insight into structural diversity of *GH3* genes, we compared exon/intron organization of individual *GH3* gene in chickpea and soybean. Most of the sister pairs shared similar exon/intron structures, intron numbers and intron phasing (Figure 2; Supplemental Tables S3A,B). However, all closely located *GmGH3* genes, such as *GmGH3-7*, -8, -9, -10 on chromosome 6, *GmGH3-17*, -18, and -19 on chromosome 12, *GmGH3-20*, -21, and -22 on chromosome 13, and *GmGH3-26*

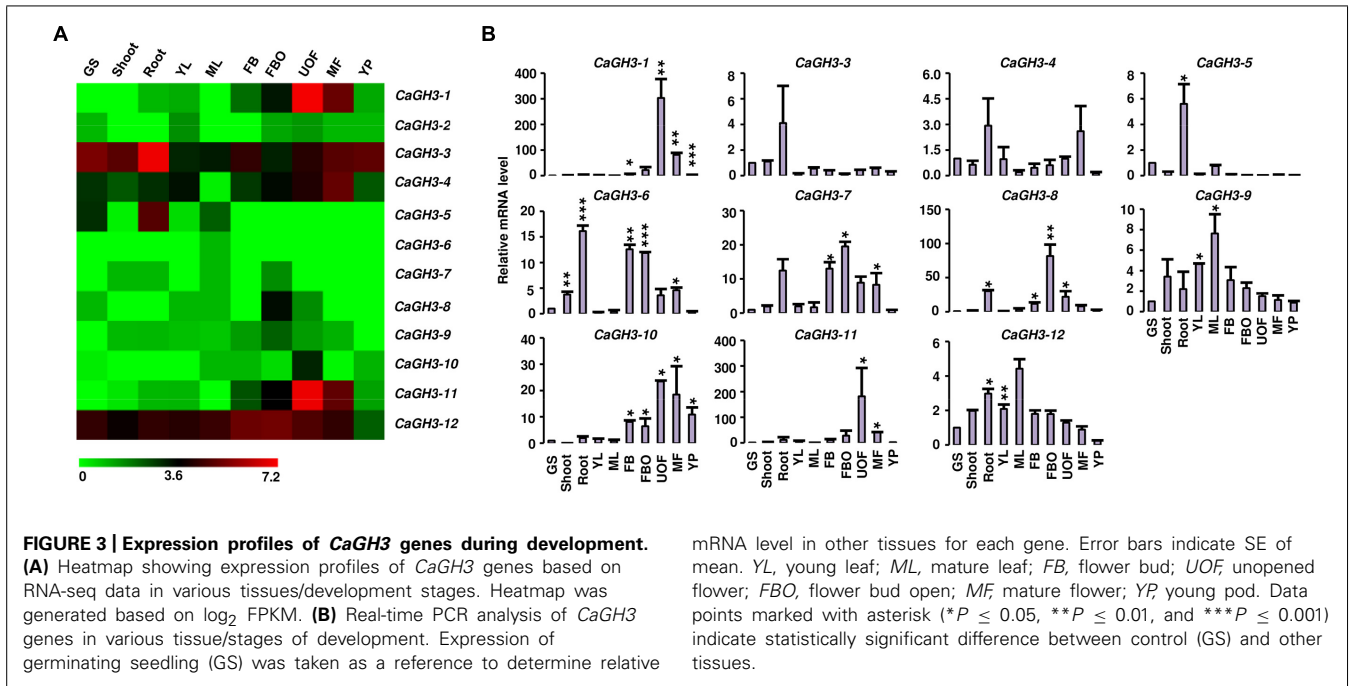




and -27 on chromosome 17, were not paired together (**Figure 2**). This suggested that these genes might have diverged substantially during evolution. Most of the AtGH3/GmGH3 proteins showed 1:4 orthologous relationship, such as AtGH3-10/GmGH3-9, -15, -21, and -18 (**Figure 2**). Presence of such orthologous relationship between AtGH3/GmGH3 pairs is also in agreement with the fact that soybean whole genome duplication happened twice in the past (Schmutz et al., 2010). Some *Arabidopsis* and legume GH3 protein pairs (AtGH3-5 and -6/CaGH3-3 and -10, AtGH3-9, and -17/GmGH3-3, and -12, AtGH3-11/MtGH3-5, LjGH3-1) exhibited n:n orthologous relationship, which suggest that members of this family have diversified both in *Arabidopsis* and legumes independently (Wang et al., 2007; Wu et al., 2011; Liu and Hu, 2013; Yuan et al., 2013).

DIFFERENTIAL EXPRESSION PATTERNS OF GH3 GENES DURING DEVELOPMENT

Phytohormone auxin is required for plant morphogenesis, including tropistic growth, root patterning, vascular tissue differentiation, axillary bud formation, and floral organ development (Zhao, 2010). Expression analysis of *GH3* genes in various tissue-types during different developmental stages in different plant species have suggested their diverse roles in plants (Gee et al., 1991; Nakazawa et al., 2001; Takase et al., 2004; Khan and Stone, 2007; Jain and Khurana, 2009; Zhang et al., 2009; Böttcher et al., 2010; Kuang et al., 2011; Kumar et al., 2012). Therefore, we performed expression analysis of *GH3* genes in various tissue/stages of development in legumes to know their putative functions. Availability of gene expression atlas covering various tissues/organs and stages of development (Benedito et al., 2008; Libault et al., 2010; Severin et al., 2010; Singh et al., 2013; Verdier et al., 2013), serves as resource to profile expression of candidate genes in legumes. We analyzed the expression of chickpea *GH3* genes using our RNA-seq data (Singh et al., 2013) and validated the results via qRT-PCR analysis (**Figure 3**). This analysis revealed that *CaGH3* genes were differentially expressed in various tissues/stages of development. *CaGH3-3* and *CaGH3-5* genes exhibited higher expression in root, which was also confirmed via qRT-PCR, suggesting their role in chickpea root development (**Figure 3**). *CaGH3-3* orthologs in *Arabidopsis*, *AtGH3-2*, and *AtGH3-6*, were found to have role in root development (Nakazawa et al., 2001; Takase et al., 2004). In addition, *CaGH3-1* and *CaGH3-11* exhibited preferential expression in unopened flower, indicating that these genes might be involved in auxin homeostasis during a specific developmental stage of flower (**Figure 3**). In rice, *OsGH3-1*, -4, -5, -8, and -11 genes displayed highest expression level in flower (Jain et al., 2006) and *OsGH3-8* has been reported as the downstream target of rice MADS-box transcription factor (*OsMADS1*), which is involved in patterning of inner whorl floral organ (Prasad et al., 2005). Expression of *CaGH3-10* was also distinctly higher in unopened flower, suggesting its role in flower development. *CaGH3-10* was found to be in same phylogenetic clade with *AtGH3-5* and -6, whose orthologs in rice *OsGH3-1* and -4 have higher expression in flower (Jain et al., 2006; Jain and Khurana, 2009), validating our observation. Paralogous gene pair, *CaGH3-7* and -8 exhibited significantly higher expression in open flower bud, indicating their possible role in auxin homeostasis in early stages of flower development



mRNA level in other tissues for each gene. Error bars indicate SE of mean. YL, young leaf; ML, mature leaf; FB, flower bud; UOF, unopened flower; FBO, flower bud open; MF, mature flower; YP, young pod. Data points marked with asterisk (* $P \leq 0.05$, ** $P \leq 0.01$, *** $P \leq 0.001$) indicate statistically significant difference between control (GS) and other tissues.

and support the notion that paralogs might have similar expression patterns and function. Transcript level of *CaGH3-2* could not be detected via qRT-PCR, suggesting it might be expressed in a specific tissue/stages of development. These findings highlight the role of *CaGH3* genes in overall plant development including various stages of reproductive development.

Furthermore, we analyzed the expression profiles of *GmGH3*, *MtGH3*, and *LjGH3* genes in different vegetative and reproductive tissues, utilizing expression data from published RNA-seq atlas of soybean (Severin et al., 2010), *Medicago* (Benedito et al., 2008), and *Lotus* (Verdier et al., 2013), respectively. Expression analysis of *GmGH3* genes revealed their dynamic regulation in various tissues and stages of development (Figure 4A). *GmGH3-8* and *GmGH3-25* showed distinctly higher expression in root, *GmGH3-4* and *GmGH3-13* were up-regulated in nodule, *GmGH3-14* and *GmGH3-18* exhibited flower-specific expression, *GmGH3-9* showed specific expression in young leaf and *GmGH3-20* expression was higher in stages of seed development (Figure 4A). Previously, it has been reported that *GH3* genes in soybean exhibit transient expression during floral development and higher expression in ovule and ovary at later stages of floral development (Gee et al., 1991). Reports also suggested role of *GH3* genes during seed development, for example, *GH3* gene (*YDK1*) was found to be specifically up-regulated at heart stage during embryogenesis of *Solanum chacoense* (Tebbjji et al., 2010). In rice, involvement of *GH3* genes in seed development has also been reported. For instance, *OsGH3-13* overexpressing rice exhibited smaller seeds (Zhang et al., 2009) and *OsGH3-4* have higher expression during various stages of seed development (Jain and Khurana, 2009). These findings indicated that *GmGH3* genes could play an important role in seed development.

The paralogous *GmGH3* genes, *GmGH3-6* and *GmGH3-26*, *GmGH3-8* and *GmGH3-16*, *GmGH3-11* and *GmGH3-25*,

GmGH3-17 and *GmGH3-22*, and *GmGH3-23* and *GmGH3-24* localized on duplicated chromosomal segments, exhibited similar expression patterns in various tissues/stages of development (Figures 4A,B), suggesting their similar function. However, duplicated genes are also known to have a great degree of expression and functional divergence due to selection pressure and need for diversification (Prince and Pickett, 2002). Many duplicated *GmGH3* genes exhibited expression divergence as well, such as *GmGH3-1* and *GmGH3-13*, *GmGH3-3* and *GmGH3-12*, *GmGH3-5* and *GmGH3-28*, *GmGH3-9* and *GmGH3-15*, and *GmGH3-11* and *GmGH3-25* (Figures 4A,B). These results suggested that chromosomal duplication events not only facilitated the amplification of the *GmGH3* gene family members, but also resulted into expression divergence between duplicated genes, which might have contributed in the establishment of gene functional diversity during evolution.

Likewise, the expression of *MtGH3* and *LtGH3* genes was also found to be variable in various tissue/stages of development. For instance, *MtGH3-4* exhibited significantly higher expression in root, *MtGH3-8* showed greater expression in root and various stages of seed development (Supplemental Figure S2). *LjGH3-2* was found to be up-regulated in root, whereas *LjGH3-1*, -6, and -12 showed distinctly higher expression in leaf, and *LjGH3-3*, -4, -5, and -18 were seen to be up-regulated in root and nodule (Supplemental Figure S4). Expression of other *GH3* genes of legumes was also found to be variable in various tissue/stages of development elucidating their involvement in various growth and development processes (Wang et al., 2010; Kuang et al., 2011).

Furthermore, we analyzed expression patterns of paralogous/orthologous *GH3* genes to investigate their functional conservation across legumes. Although the available expression data represented diverse tissues/developmental stages in different

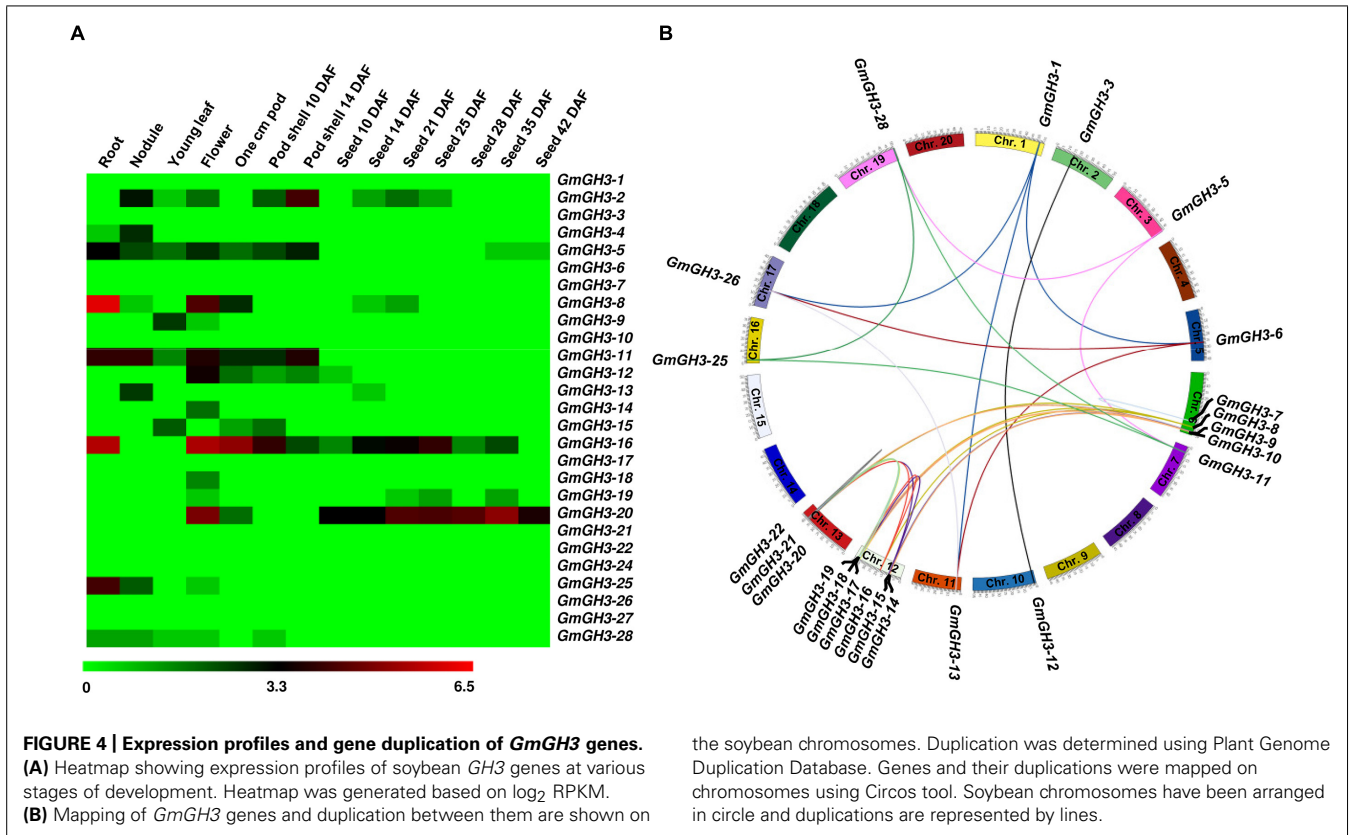


FIGURE 4 | Expression profiles and gene duplication of *GmGH3* genes. (A) Heatmap showing expression profiles of soybean *GH3* genes at various stages of development. Heatmap was generated based on \log_2 RPKM. (B) Mapping of *GmGH3* genes and duplication between them are shown on

the soybean chromosomes. Duplication was determined using Plant Genome Duplication Database. Genes and their duplications were mapped on chromosomes using Circos tool. Soybean chromosomes have been arranged in circle and duplications are represented by lines.

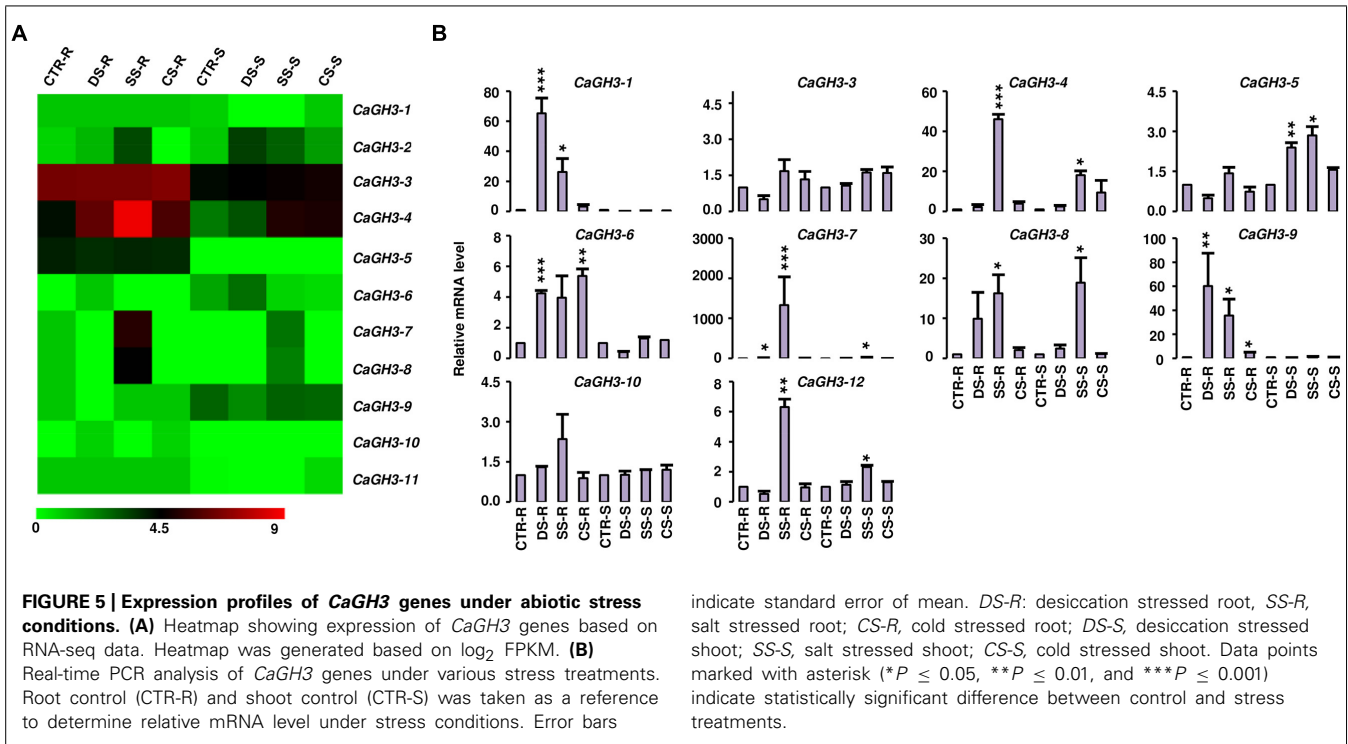
legumes, we made an effort to define correlation in expression profiles of *GH3* genes in different legumes. Some of paralogous/orthologous *GH3* genes exhibited similar expression patterns in different legumes, such as *CaGH3-3*, *GmGH3-8*, -16, -20, *MtGH3-1* and *LjGH3-11*; *CaGH3-12*, *GmGH3-5*, -11, -25, -28 and *LjGH3-1*; *CaGH3-5* and *GmGH3-4*; *CaGH3-4* and *LjGH3-2*; *GmGH3-13* and *LjGH3-2*; *MtGH3-2* and *LjGH3-14*; and *MtGH3-3* and -6, suggesting their conserved function across legumes (Figures 3–5; Supplemental Figures S2 and S3). Some of these paralogous/orthologous genes harbor similar cis-regulatory elements in their promoter regions (Supplemental Table S4). For instance, *CaGH3-3*, *GmGH3-8*, -16, and -20 contain cis-regulatory elements, S000037, S000270, S000273, S000390, S000414, S000453, and S000461, conserved in their promoter sequences (Supplemental Table S4). An earlier study revealed similarity of gene expression profiles in various organs for a significant number of paralogous/orthologous gene pairs in *Medicago* and *Arabidopsis* (Benedito et al., 2008). Moreover, comparison of soybean transcriptome with *Medicago* and *Lotus* demonstrated similar tissue-specificity for 45% of the genes analyzed (Libault et al., 2010). Overall, these findings provide insights into the putative roles of *GH3* genes in legumes in various aspects of plant growth and development.

DIFFERENTIAL EXPRESSION PATTERNS OF *GH3* GENES UNDER ABIOTIC STRESSES

Plants are constantly exposed to various abiotic stresses in their life cycle. Several recent studies have implicated auxin in abiotic

stress responses (Jain and Khurana, 2009; Wang et al., 2010; Du et al., 2012; Kumar et al., 2012; Yuan et al., 2013). Some studies have revealed that *GH3* genes are regulated by abiotic stresses, like drought, salt, and cold stresses (Park et al., 2007; Jain and Khurana, 2009). The transcript level of *AtGH3-5* (*WES1*) has been shown to be induced by various abiotic stress conditions, like drought, high salt, and cold (Park et al., 2007). In rice, the transcript abundance of *OsGH3-1*, *OsGH3-2*, *OsGH3-8*, and *OsGH3-13* were markedly higher in seedlings subjected to salt, drought and cold stresses (Jain and Khurana, 2009; Zhang et al., 2009; Du et al., 2012). In *Sorghum*, at least six *GH3* genes were found to be induced upon salt and drought treatments in leaf (Wang et al., 2010).

To investigate the role of legume *GH3* genes in abiotic stress responses, we performed scanning of cis-acting regulatory DNA elements within promoter regions (2 kb upstream from the start codon) using PLACE database. This analysis predicted several elements responsive to auxin (IAA), abscisic acid (ABA), SA, JA, drought, salinity, and disease (Supplemental Table S4), suggesting that the function of these genes may be associated with various phytohormone signals and/or environmental stresses. Considering regulatory role of cis-elements, we analyzed expression of *GH3* genes under abiotic stress conditions to know their function during abiotic stresses. For chickpea, we analyzed RNA-seq data from root and shoot tissues subjected to desiccation, salinity and cold conditions (Garg et al., 2014), and performed real-time PCR analysis for validation. In our analysis, paralogous gene pair, *CaGH3-1* and -9, showed induction under both desiccation and



salinity stresses in root (Figures 5A,B), and also their promoter sequences harbor desiccation (S000414) and salinity (S000453) responsive *cis*-regulatory elements (Supplemental Table S4), indicating their role in desiccation and salinity stress. Recently, rice group-I gene, *OsGH3-12*, has also been found to be markedly induced by drought stress (Du et al., 2013b). Similarly, promoter of *CaGH3-4* harbor salinity responsive *cis*-element (S000453) and showed higher expression in root under salt stress (Figures 5A,B). Its ortholog, *AtGH3-1*, has also been found to be up-regulated under salt stress (Sani et al., 2013), corroborating our result. Group-I paralogous genes, *CaGH3-7* and *-8*, were found to be induced in root under salinity stress (Figures 5A,B), implying their involvement in homeostasis of auxin under salinity stress in root. *CaGH3-5* and *-6* showed enhanced expression under desiccation, salt and cold stresses in shoot and root (Figures 5A,B), respectively, suggesting their role during multiple abiotic stress responses.

In *Medicago*, *MtGH3-8* and *-9* genes were induced under salt stress in root, and *MtGH3-7* was induced under drought stress in root (Supplemental Figure S2). Previous reports suggest that IAA, SA, JA, ethylene, and ABA regulate the protective responses of plants against both biotic and abiotic stress responses via signaling crosstalk (Bostock, 2005; Lorenzo and Solano, 2005; Mauch-Mani and Mauch, 2005; Ding et al., 2008; Domingo et al., 2009; Fu et al., 2011). In addition, orthologous genes, *CaGH3-10* and *MtGH3-8*, showed induced expression under salt stress in root (Figure 5; Supplemental Figure S2); suggesting their conserved function in both legumes. Taken together, these findings indicated that members of GH3 gene family might be involved in stress adaptation in legumes.

HOMOLOGY MODELING AND SUBSTRATE PREFERENCES

The availability of crystal structures of two *Arabidopsis* GH3 proteins: AtGH3-12, which conjugate benzoate substrate and JA-specific AtGH3-11/JAR1 (Westfall et al., 2012); and grapevine IAA-amido synthetase GH3-1 (VvGH3-1) gave us an exciting opportunity to determine three-dimensional structure of GH3 members in legumes by homology modeling.

Group-I protein, CaGH3-3 and GmGH3-8 of chickpea and soybean, respectively, were modeled using structure of AtGH3-11 (Protein Data Bank code 4EPL; Westfall et al., 2012) and Group-II proteins, CaGH3-12 and GmGH3-25 were modeled using grapevine, Vv-GH3-1 (Protein Data Bank code 4B2G; Peat et al., 2012). The homology modeling revealed high degree of conservation in the protein structure of these proteins. To predict active sites, we transferred ligands from template to model by superimposing structures. Ligands for group-I proteins are JA-Ile and AMP (amino acid mono phosphate), and group-II proteins are adenosine-5'-[2-(1H-indole-3-yl)ethyl]phosphate (AIEP), which mimics the adenylated intermediate of the IAA conjugation reaction (Figures 6 and 7; Böttcher et al., 2012; Westfall et al., 2013). By comparing sequences of model and template, we also identified the residues forming acyl acid/hormone-binding site and nucleotide binding site (Figures 7 and 8). Most of these residues were found to be conserved between the model and template. For example, hormone-binding residues of CaGH3-12 and GmGH3-25 with AtGH3-11 (JA-conjugating), Ca-Leu137, Gm-Leu115 to At-Leu117; Ca-Thr141, Gm-Thr119 to At-Thr121; Ca-Thr185, Gm-Thr163 to At-Thr166; Ca-Val188, Gm-Val168 to At-Val169; Ca-Ile323, Gm-Ile301 to At-Ile304; and Ca-Trp355, Gm-Trp333 to At-Trp336 are conserved (Figures 7 and 8). Similarly, conservation was found between hormone-binding residues of CaGH3-3 and

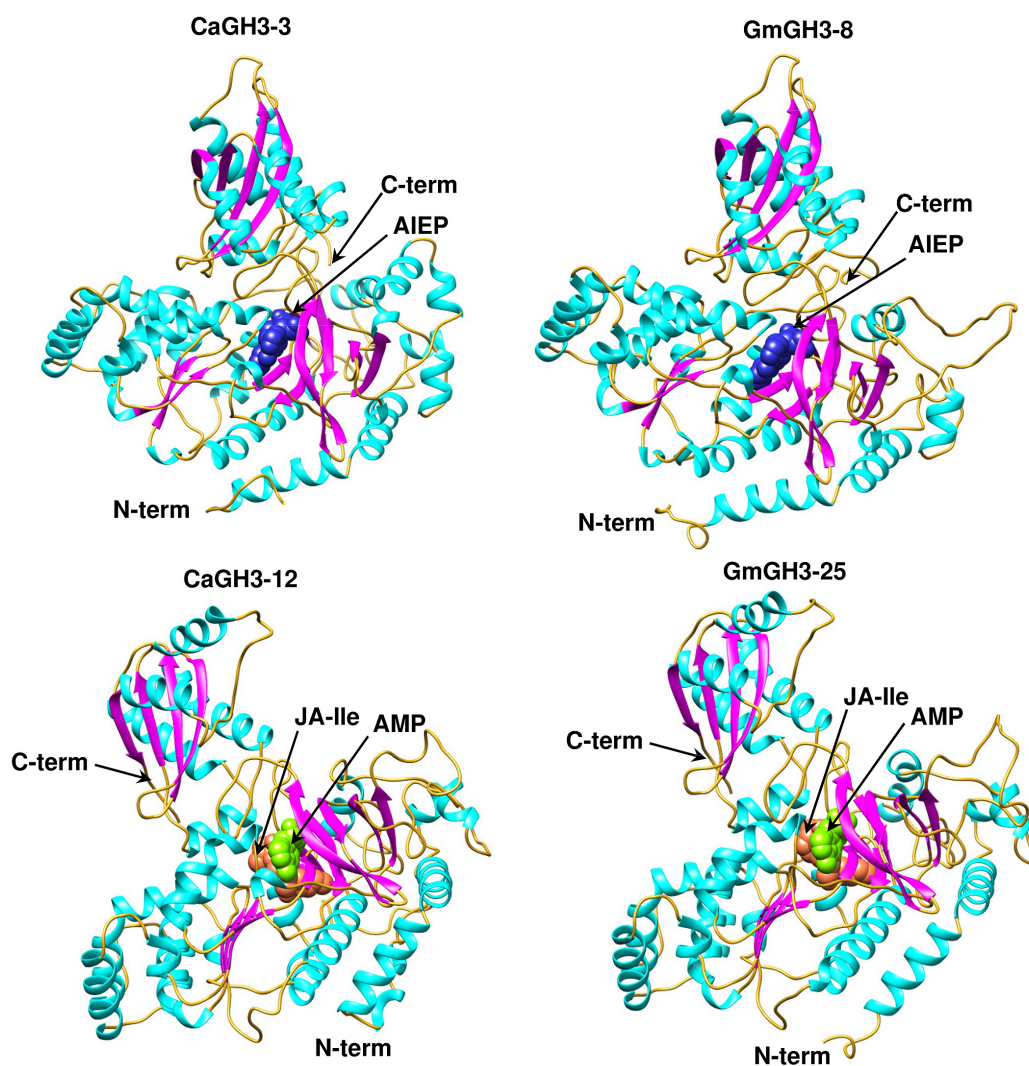


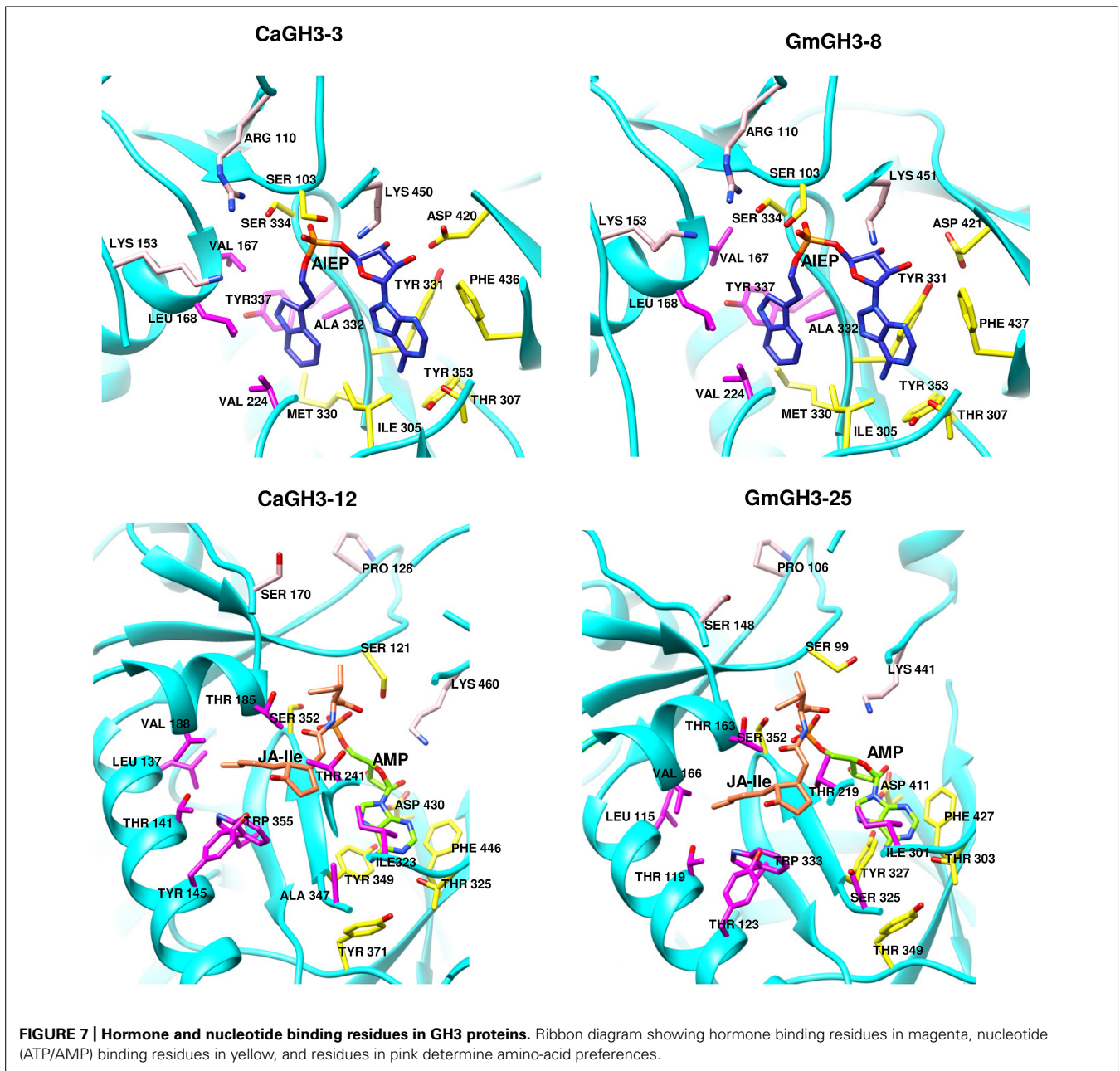
FIGURE 6 | Predicted structures of GH3 proteins. Ribbon diagram showing the *N*- and *C*-terminal domains of chickpea (CaGH3-3 and CaGH3-8) and soybean (GmGH3-8 and GmGH3-25) GH3 protein with α -helices, β -strands

and loops colored cyan, magenta, and gold, respectively. Ligands AIEP, JA-Ile, AMP are shown as space-filling model in blue, coral, and green colors, respectively.

GmGH3-8 with VvGH3-1 (IAA-conjugating), Ca-Val167, Gm-Val167 to Vv-Val172; Ca-Leu168, Gm-Leu168 to Vv-Leu173; Ca-Ala332, Gm-Ala332 to Vv-Ala337; and Ca-Tyr337, Gm-Tyr337 to Vv-Tyr342 (**Figures 7 and 8**). In addition, we also found nucleotide-binding residues, Ser, Thr, Phe, and Tyr conserved in all the structures (**Figures 7 and 8**), which is in agreement with earlier studies that nucleotide binding residues conserved in not only GH3 proteins but also the ANL superfamily (Gulick, 2009; Peat et al., 2012; Westfall et al., 2012, 2013).

Further, to determine amino-acid specificities, we identified residues involved in discrimination of apolar (i.e., Ile) and acidic (i.e., Asp/Glu) substrates in the transferase reaction by comparing structures. Within the active site, a lysine residue (Lys450 in CaGH3-3, Lys460 in CaGH3-12, Lys451 in GmGH3-8 and Lys441 in GmGH3-25) was conserved at same position (**Figures 7 and 8**).

This residue was also found to be highly conserved in GH3 proteins with known amino-acid preference (Westfall et al., 2012). Also, it has been found that Lys428 (AtGH3-12) is conserved in GH3-proteins that accept acidic-amino acid, whereas Ser151 (AtGH3-11) at the same position is conserved in enzymes specific to isoleucine conjugation (Westfall et al., 2012). We also found Lys153 in CaGH3-3 and GmGH3-8, suggesting CaGH3-3 and GmGH3-8 may accept acidic-amino acid (i.e., Asp/Glu) and at the same position Ser170 in CaGH3-12 and Ser148 in GmGH3-25, indicating their preferences for isoleucine (**Figures 7 and 8**). In addition, conservation of another residue Arg110 in IAA-specific CaGH3-3 and GmGH3-8 (**Figures 7 and 8**), further specified their Asp-conjugating nature. This was also corroborated by another study in grapevine, where residue Arg115 in VvGH3-1 (IAA-specific) was conserved in all the four Asp-conjugating GH3s, whereas Glu-conjugating GH3s had a Proline at that position (Peat



et al., 2012). Also, the same pattern was found in IAA-conjugating GH3 enzymes with known amino-acid substrate preferences from *Arabidopsis* (Staswick et al., 2005) and rice (Zhang et al., 2009; Chen et al., 2010). Next, we also found similar conservation in residues determining amino-acid preferences for other members of GH3 proteins, which led us to propose substrates for them (Figure 8). Group-I proteins with conserved Ser and Lys at similar position as that of CaGH3-12 (Ser170 and Lys461; magenta boxes; Figure 8) are proposed to have Ile as substrate (Figure 8). For group-II proteins, Asp will be the substrate when Arg at 128 and Lys at positions 170 and 461 (magenta boxes; Figure 8); and Glu, will be the substrate when Arg is replaced by Pro at the same position (Figure 8). Altogether, the structures presented

here showed conservation of residues at hormone-binding site, nucleotide-binding site, and amino-acid preferences determining residues, indicating similar function.

Several previous studies have reported the differential expression of GH3 genes in various tissues/developmental stages and in response to various stimuli, including auxin, jasmonic acid, salicylic acid, and abiotic/biotic stresses in different plants (Park et al., 2007; Zhang et al., 2007; Jain and Khurana, 2009; Kumar et al., 2012; Yuan et al., 2013; Wu et al., 2014). Our results also revealed preferential/tissue-specific and stress-responsive expression of many GH3 genes in different legumes. The knowledge of motifs/residues of GH3 proteins that determine substrate preferences and conjugation to auxin may help modulate their

Substrate			120	133	168	184	241	323	325	347	371	422	446	460	
Group-I	CaGH3-12	JA	Ile	SSGTTQGKPK	WNDELFTTMQIYQTS	YGS	ATSNV	T	I	TG	ADYGASEGW	Y	GLYRVRVGD	F	DKN
	GmGH3-28	JA	Ile	SSGTTQGKPK	WNDELYETTMQIYLT	YGS	ATSNV	T	I	TG	ADYGSSEGW	Y	GLYRRLDGD	F	DKN
	GmGH3-5	JA	Ile	SSGTTQGKPK	WNDELYETTMQIYQTS	YGS	ATSNV	T	I	TG	ADYGSSEGW	Y	GLYRRLDGD	F	DKN
	LjGH3-1	JA	Ile	SSGTTQGKPK	WNDELFTTMQIYKTS	YGS	ATSNL	T	I	TG	ADYGSTEGW	Y	GLYRRLDGD	F	DKN
	MtGH3-5	JA	Ile	SSGTTQGKPK	WNDELFTTMQIYRTS	YGS	ATSNV	T	I	TG	ADYGASEGW	Y	GLYRRLDGD	F	DKN
	GmGH3-11	JA	Ile	SSGTTQGKPK	WNDELFDTTLQIYHTS	YSS	ATTNV	I	I	TG	SDYGSSEGW	Y	GLYRRLDGD	F	DKN
	GmGH3-25	JA	Ile	SSGTTQGKPK	WNDELFDTTLQIYHTS	YSS	ATTNV	T	I	TG	SDYGSSEGW	Y	GLYRRLDGD	F	DKN
	AtGH3-11	---	Ile	SSGTSQGRPK	FTDELMENTLQLFRTA	FSS	ATTNV	V	I	TG	HDYGSSEGW	F	GLYRRLDGD	F	DKN
	AtGH3-10	---	---	SSGTEGRQK	FTRHSAQTTLQIFRLS	YAG	ATTHY	A	I	TG	ADYGSSTESW	F	GLYRRLDGD	F	DKN
	GmGH3-15	JA	Ile	SSGTEGRQK	FTRHSAQTTLQIFTLA	YSS	ATTHY	A	I	TG	ADYGSSTESW	F	GLYRRLDGD	F	DKN
	GmGH3-9	JA	Ile	SSGTEGRQK	FTRHSAQTTLQIFTLA	YSS	ATTHY	A	I	TG	AEGYSTESW	F	GLYRRLDGD	F	DKN
	GmGH3-18	JA	Ile	SSGTEGRQK	FTRHSAQTTLQIFTLA	YSS	ATTHY	A	I	TG	ADYGSSTESW	F	GLYRRLDGD	F	DKN
	GmGH3-21	JA	Ile	SSGTEGKQK	FTRHSAQTTLQIFTLA	YSS	ATTHY	A	I	TG	GDYGSSTESW	F	GLYRRLDGD	F	DKN
	AtGH3-7	---	---	STGTSGGAQK	WNEKYLDNLTFFMYDLR	FTK	ASSSY	I	I	TG	TIYASSETQ	Y	GLYRIRVGD	F	DKT
	AtGH3-12	benzoates	Glu	SSGTSGGAQK	WNNKYLDNLTFFMYDLR	FTK	ATSSY	I	V	TG	TTYGSSETT	Y	GLYRMRVGD	F	DKT
	AtGH3-8	---	---	SSGTSGGKHK	RNNKYLENLKFIFYR	FCT	ASTSF	A	I	TG	SSVVSSETM	Y	GLHRKMGD	F	BIT
	AtGH3-18	---	---	STGTSGGIHK	VNDKYIENLGYLLAS	YNR	SFTSY	T	I	TG	MVYGSSESI	Y	GLHRYLIGD	F	EAT
	AtGH3-17	IAA	Glu	SSGTSACKPK	STAEELERTFFYMSL	FIK	VLTSY	V	I	TG	TMYASSECY	Y	GLYRVRVGD	F	DKT
	AtGH3-4	IAA	Asp	SSGTSAGERK	TIEEDINRRQLLGNLL	FVK	ALTSY	V	I	TG	MIYASSESY	Y	GLYRVRVGD	F	DKT
	AtGH3-2	IAA	Glu/Asp	SSGTSAGERK	TIEEDLDRQLLYSLL	FVK	VLTSY	V	I	TG	TMYASSESY	Y	GLYRVRVGD	F	DKT
	AtGH3-3	IAA	Asp	SSGTSAGERK	TIEEDMDRRQLLYSLL	FVK	VLTSY	V	I	TG	TMYASSESY	Y	GLNRYRVDG	F	DKT
AtGH3-1	---	---	SSGTSAGERK	TIEEELDRQLLYSLL	FVK	VLTSY	V	I	TG	TMYASSECY	Y	GLCRYRVDG	F	DKT	
CaGH3-4	IAA	Asp	SSGTSAGERK	TIEEELDRQLLYSLL	FVK	VLTSY	V	I	TG	TMYASSECY	Y	GLYRHYVGD	F	DKT	
LjGH3-2	IAA	Asp	SSGTSAGERK	TIEEELDRQLLYSLL	FVK	VLTSY	V	I	TG	TMYASSECY	Y	GLYRHYVGD	F	DKT	
GmGH3-2	IAA	Asp	SSGTSAGERK	TIEEELDRQLLYSLL	FVK	VLTSY	V	I	TG	TMYASSECY	Y	GLYRHYVGD	F	DKT	
GmGH3-13	IAA	Asp	SSGTSAGERK	TIEEEMDRQLLYSLL	FIK	VLTSY	V	I	TG	TMYASSECF	Y	GLCRYRVDG	F	DKT	
GmGH3-1	IAA	Asp	SSGTSAGERK	TIEEEMDRQLLYSLL	FIK	VLTSY	V	I	TG	TMYASSECF	Y	GLCRYRVDG	F	DKT	
MtGH3-4	IAA	Asp	SSGTSAGERK	TIEEEMDRQLLYSLL	FIK	VLTSY	V	I	TG	TMYASSECF	Y	GLCRYRVDG	F	DKT	
LjGH3-3	IAA	Asp	SSGTSAGERK	TIEEEMDRQLLYSLL	FIK	VLTSY	V	I	TG	TMYASSECY	Y	GLCRYRVDG	F	DKT	
LjGH3-8	IAA	Asp	SSGTSAGERK	TIEEELDRQLLYSLL	FIK	VLTSY	V	I	TG	TMYASSECY	Y	GLCRYRVDG	F	DKT	
GmGH3-26	IAA	Asp	SSGTSAGERK	TIEEELDRQLLYSLL	FIK	VLTSY	V	I	TG	TMYASSECY	Y	GLCRYRVDG	F	DKT	
GmGH3-6	IAA	Asp	SSGTSAGERK	TIEEELDRQLLYSLL	FIK	VLTSY	V	I	TG	TMYASSECF	Y	GLCRYRVDG	F	DKT	
GmGH3-27	IAA	Asp	SSGTSAGERK	TIEEELDRQLLYSLL	FIK	VLTSY	V	I	TG	TMYASSECY	Y	GLCRYRVDG	F	DKT	
AtGH3-5	IAA	Glu/Asp	SSGTSGGERK	TIEEELDRQLLYSLL	FIK	VLTSY	V	I	TG	TMYASSECY	Y	GLCRYRVDG	F	DKT	
AtGH3-6	IAA	Asp	SSGTSGGERK	TIEEELDRQLLYSLL	FIK	VLTSY	V	I	TG	TMYASSECY	Y	GLYRVRVGD	F	DKT	
CaGH3-3	IAA	Asp	SSGTSGGERK	TIEEELARRSLLYSLL	FIK	VLTSY	V	I	TG	TMYASSECY	Y	GLYRVRVGD	F	DKT	
GmGH3-16	IAA	Asp	SSGTSGGERK	TIEEELGRRSLLYSLL	FIK	VLTSY	V	I	TG	TMYASSECY	Y	GLYRVRVGD	F	DKT	
GmGH3-8	IAA	Asp	SSGTSGGERK	TIEEELGRRSLLYSLL	FIK	VLTSY	V	I	TG	TMYASSECY	Y	GLYRVRVGD	F	DKT	
LjGH3-11	IAA	Asp	SSGTSGGERK	TIEEELGRRSLLYSLL	FIK	VLTSY	V	I	TG	TMYASSECY	Y	GLYRVRVGD	F	DKT	
GmGH3-19	IAA	Asp	SSGTSGGERK	TIEEELGRRSLLYSLL	FIK	VLTSY	V	I	TG	TMYASSECY	Y	GLYRVRVGD	F	DKT	
GmGH3-20	IAA	Asp	SSGTSGGERK	TIEEELGRRSLLYSLL	FIK	VLTSY	V	I	TG	TMYASSECY	Y	GLYRVRVGD	F	DKT	
MtGH3-1	IAA	Asp	SSGTSGGERK	ATEEELGRRSLLYSLL	FIK	VLTSY	V	I	TG	TMYASSECY	Y	GLYRVRVGD	F	DKT	
GmGH3-14	IAA	Asp	SSGTSGGERK	TIEEELGRRSLLYSLL	FIK	VLTSY	V	I	TG	TMYASSECY	Y	GLYRVRVGD	F	DKT	
GmGH3-10	IAA	Asp	SSGTSGGERK	TIEEELGRRSLLYSLL	FIK	VLTSY	V	I	TG	TMYASSECY	Y	GLYRVRVGD	F	DKT	
MtGH3-8	IAA	Asp	SSGTSGGERK	TIEEELGRRSLLYSLL	FIK	VLTSY	V	I	TG	TMYASSECY	Y	GLYRVRVGD	F	DKT	
GmGH3-22	IAA	Asp	SSGTSGGERK	TIEEELGRRSLLYSLL	FIK	VLTSY	V	I	TG	TMYASSECY	Y	GLYRVRVGD	F	DKT	
LjGH3-9	IAA	Asp	SSGTSGGERK	TIEEELGRRSLLYSLL	FIK	VLTSY	V	I	TG	TMYASSECY	Y	GLYRVRVGD	F	DKT	
AtGH3-9	---	---	SSGTSAGEPK	TIEEELGRRSLLYSLL	FIK	VLTSY	V	I	TG	TMYASSECY	Y	GLYRVRVGD	F	DKT	
GmGH3-3	IAA	Glu	SSGTSAGEPK	TIEEELGRRSLLYSLL	FIK	VLTSY	V	I	TG	TMYASSECY	Y	GLYRVRVGD	F	DKT	
GmGH3-12	IAA	Glu	SSGTSAGEPK	TIEEELGRRSLLYSLL	FIK	VLTSY	V	I	TG	TMYASSECY	Y	GLYRVRVGD	F	DKT	
AtGH3-13	---	---	SSGTTAGIQN	LTPEDEGQRIMFGSLY	FVN	MITCV	P	V	TG	SWYGSSECF	Y	GLYRVRVGD	F	ANT	
AtGH3-14	---	---	SSGTSGGVPK	LTPEDEGQRISFASLY	FVN	MITCV	P	I	TG	TFYGSSECF	Y	GLYRVRVGD	F	DKT	
AtGH3-15	---	---	SSGTSGGVPK	LTPEDEGQRISFSSLY	FVT	MVTSF	P	I	TG	SFYGSSECF	Y	GLYRVRVGD	F	DKT	
AtGH3-16	---	---	TTGTSGGIPK	LTAEEELGRRSLLYSLL	FVT	MITCV	P	V	TG	SWYGSSECF	Y	GLYRVRVGD	F	SKT	

FIGURE 8 | Proposed substrates of GH3 proteins based on conserved amino acid residues. Protein sequences of all the identified GH3 genes were aligned using MAFFT. Green and blue boxes represent nucleotide (ATP/AMP) and hormone-binding motifs/residues, respectively. Magenta

boxes represent residues determining amino-acid preferences. Only sequences with complete C- and N-terminal domains were included. Star across the top of the alignment indicates conserved residues in pocket forming active site. Numbering at the top corresponds to CaGH3-12.

binding efficiency and substrate preferences for engineering plants with desired agronomic traits.

CONCLUSIONS

We performed a genome-wide analysis of GH3 gene family in legumes to reveal gene structure, phylogenetic relationship, and expression profiles during various developmental stages and abiotic stress conditions. Some GH3 genes exhibited preferential/specific expression in a particular tissue and/or under abiotic stress condition(s). Our analysis revealed that GH3 genes seem to be involved in biology of various tissues or organs and actively

participate in stress responses in legumes. The analysis of protein structures of few members identified key features of substrate recognition, which might help in investigation of their molecular functions in legumes. The data generated in this study will serve as a foundation for functional characterization of GH3 gene family members in legumes.

ACKNOWLEDGMENTS

This work was funded by the Department of Biotechnology, Government of India, under the Next Generation Challenge Programme on Chickpea Genomics (grant number

BT/PR12919/AGR/02/676/2009 from 2009 to 2014) to Mukesh Jain. Rohini Garg acknowledges INSPIRE faculty award from the Department of Science and Technology, Government of India. Vikash K. Singh acknowledges the award of research fellowship from the Department of Biotechnology, Government of India.

SUPPLEMENTARY MATERIAL

The Supplementary Material for this article can be found online at: <http://www.frontiersin.org/journal/10.3389/fpls.2014.00789/abstract>

REFERENCES

- Benedito, V. A., Torres-Jerez, I., Murray, J. D., Andriankaja, A., Allen, S., Kakar, K., et al. (2008). A gene expression atlas of the model legume *Medicago truncatula*. *Plant J.* 55, 504–513. doi: 10.1111/j.1365-313X.2008.03519.x
- Bostock, R. M. (2005). Signal crosstalk and induced resistance: straddling the line between cost and benefit. *Annu. Rev. Phytopathol.* 43, 545–580. doi: 10.1146/annurev.phyto.41.052002.095505
- Böttcher, C., Dennis, E. G., Booker, G. W., Polyak, S. W., Boss, P. K., and Davies, C. (2012). A novel tool for studying auxin-metabolism: the inhibition of grapevine indole-3-acetic acid-amido synthetases by a reaction intermediate analogue. *PLoS ONE* 7:e37632. doi: 10.1371/journal.pone.0037632
- Böttcher, C., Keyzers, R. A., Boss, P. K., and Davies, C. (2010). Sequestration of auxin by the indole-3-acetic acid-amido synthetase GH3-1 in grape berry (*Vitis vinifera* L.) and the proposed role of auxin conjugation during ripening. *J. Exp. Bot.* 61, 3615–3625. doi: 10.1093/jxb/erq174
- Chen, Q., Westfall, C. S., Hicks, L. M., Wang, S., and Jez, J. M. (2010). Kinetic basis for the conjugation of auxin by a GH3 family indole-acetic acid-amido synthetase. *J. Biol. Chem.* 285, 29780–29786. doi: 10.1074/jbc.M110.146431
- Chen, Q., Zhang, B., Hicks, L. M., Wang, S., and Jez, J. M. (2009). A liquid chromatography-tandem mass spectrometry-based assay for indole-3-acetic acid-amido synthetase. *Anal. Biochem.* 390, 149–154. doi: 10.1016/j.ab.2009.04.027
- Ding, X., Cao, Y., Huang, L., Zhao, J., Xu, C., Li, X., et al. (2008). Activation of the indole-3-acetic acid-amido synthetase GH3-8 suppresses expansin expression and promotes salicylate- and jasmonate-independent basal immunity in rice. *Plant Cell* 20, 228–240. doi: 10.1105/tpc.107.055657
- Domingo, C., Andrés, F., Tharreau, D., Iglesias, D. J., and Talón, M. (2009). Constitutive expression of OsGH3.1 reduces auxin content and enhances defense response and resistance to a fungal pathogen in rice. *Mol. Plant Microbe Interact.* 22, 201–210. doi: 10.1094/MPMI-22-2-0201
- Du, D., Hao, R., Cheng, T., Pan, H., Yang, W., Wang, J., et al. (2013a). Genome-wide analysis of the AP2/ERF gene family in *Prunus mume*. *Plant Mol. Biol. Rep.* 31, 741–750. doi: 10.1007/s11105-012-0531-6
- Du, H., Liu, H., and Xiong, L. (2013b). Endogenous auxin and jasmonic acid levels are differentially modulated by abiotic stresses in rice. *Front. Plant Sci.* 4:397. doi: 10.3389/fpls.2013.00397
- Du, H., Wu, N., Fu, J., Wang, S., Li, X., Xiao, J., et al. (2012). A GH3 family member, OsGH3-2, modulates auxin and abscisic acid levels and differentially affects drought and cold tolerance in rice. *J. Exp. Bot.* 63, 6467–6480. doi: 10.1093/jxb/ers300
- Fu, J., Liu, H., Li, Y., Yu, H., Li, X., Xiao, J., et al. (2011). Manipulating broad-spectrum disease resistance by suppressing pathogen-induced auxin accumulation in rice. *Plant Physiol.* 155, 589–602. doi: 10.1104/pp.110.163774
- Garg, R., Bhattacharjee, A., and Jain, M. (2014). Genome-scale transcriptomic insights into molecular aspects of abiotic stress responses in chickpea. *Plant Mol. Biol. Rep.* doi: 10.1007/s11105-014-0753-x
- Garg, R., Patel, R. K., Jhanwar, S., Priya, P., Bhattacharjee, A., Yadav, G., et al. (2011). Gene discovery and tissue-specific transcriptome analysis in chickpea with massively parallel pyrosequencing and web resource development. *Plant Physiol.* 156, 1661–1678. doi: 10.1104/pp.111.178616
- Garg, R., Sahoo, A., Tyagi, A. K., and Jain, M. (2010). Validation of internal control genes for quantitative gene expression studies in chickpea (*Cicer arietinum* L.). *Biochem. Biophys. Res. Commun.* 396, 283–288. doi: 10.1016/j.bbrc.2010.04.079
- Gee, M. A., Hagen, G., and Guilfoyle, T. J. (1991). Tissue-specific and organ-specific expression of soybean auxin-responsive transcripts GH3 and SAURs. *Plant Cell* 3, 419–430. doi: 10.1105/tpc.3.4.419
- Gulick, A. M. (2009). Conformational dynamics in the Acyl-CoA synthetases, adenylation domains of non-ribosomal peptide synthetases, and firefly luciferase. *ACS Chem. Biol.* 4, 811–827. doi: 10.1021/cb900156h
- Hagen, G., and Guilfoyle, T. (2002). Auxin-responsive gene expression: genes, promoters and regulatory factors. *Plant Mol. Biol.* 49, 373–385. doi: 10.1023/A:1015207114117
- Hagen, G., Kleinschmidt, A., and Guilfoyle, T. (1984). Auxin-regulated gene expression in intact soybean hypocotyls and excised hypocotyl sections. *Planta* 162, 147–153. doi: 10.1007/BF00410211
- Hagen, G., Martin, G., Li, Y., and Guilfoyle, T. J. (1991). Auxin-induced expression of the soybean GH3 promoter in transgenic tobacco plants. *Plant Mol. Biol.* 17, 567–579. doi: 10.1007/BF00040658
- Hsieh, H. L., Okamoto, H., Wang, M., Ang, L. H., Matsui, M., Goodman, H., et al. (2000). FIN219, an auxin-regulated gene, defines a link between phytochrome A and the downstream regulator COP1 in light control of *Arabidopsis* development. *Genes Dev.* 14, 1958–1970.
- Jagadeeswaran, G., Raina, S., Acharya, B. R., Maqbool, S. B., Mosher, S. L., Appel, H. M., et al. (2007). *Arabidopsis* GH3-LIKE DEFENSE GENE 1 is required for accumulation of salicylic acid, activation of defense responses and resistance to *Pseudomonas syringae*. *Plant J.* 51, 234–246. doi: 10.1111/j.1365-313X.2007.03130.x
- Jain, M., Kaur, N., Tyagi, A. K., and Khurana, J. P. (2006). The auxin-responsive GH3 gene family in rice (*Oryza sativa*). *Funct. Integr. Genomics* 6, 36–46. doi: 10.1007/s10142-005-0142-5
- Jain, M., and Khurana, J. P. (2009). An expression compendium of auxin-responsive genes during reproductive development and abiotic stress in rice. *FEBS J.* 276, 3148–3162. doi: 10.1111/j.1742-4658.2009.07033.x
- Jain, M., Misra, G., Patel, R. K., Priya, P., Jhanwar, S., Khan, A. W., et al. (2013). A draft genome sequence of the pulse crop chickpea (*Cicer arietinum* L.). *Plant J.* 74, 715–729. doi: 10.1111/tpl.12173
- Kelley, L. A., and Sternberg, M. J. E. (2009). Protein structure prediction on the Web: a case study using the Phyre server. *Nat. Protoc.* 4, 363–371. doi: 10.1038/nprot.2009.2
- Khan, S., and Stone, J. M. (2007). *Arabidopsis thaliana* GH3.9 influences primary root growth. *Planta* 226, 21–34. doi: 10.1007/s00425-006-0462-2
- Kuang, J. F., Zhang, Y., Chen, J. Y., Chen, Q. J., Jiang, Y. M., Lin, H. T., et al. (2011). Two GH3 genes from longan are differentially regulated during fruit growth and development. *Gene* 485, 1–6. doi: 10.1016/j.gene.2011.05.033
- Kumar, R., Agarwal, P., Tyagi, A. K., and Sharma, A. K. (2012). Genome-wide investigation and expression analysis suggest diverse roles of auxin-responsive GH3 genes during development and response to different stimuli in tomato (*Solanum lycopersicum*). *Mol. Genet. Genomics* 287, 221–235. doi: 10.1007/s00438-011-0672-6
- Li, Y., Liu, Z. B., Shi, X., Hagen, G., and Guilfoyle, T. J. (1994). An auxin-inducible element in soybean SAUR promoters. *Plant Physiol.* 106, 645–657. doi: 10.1104/pp.106.1.37
- Libault, M., Farmer, A., Joshi, T., Takahashi, K., Langley, R. J., Franklin, L. D., et al. (2010). An integrated transcriptome atlas of the crop model *Glycine max*, and its use in comparative analyses in plants. *Plant J.* 63, 86–99.
- Liu, S. Q., and Hu, H. F. (2013). Genome-wide analysis of the auxin response factor gene family in cucumber. *Genet. Mol. Res.* 12, 4317–4331. doi: 10.4238/2013.April.2.1
- Lorenzo, O., and Solano, R. (2005). Molecular players regulating the jasmonate signaling network. *Curr. Opin. Plant Biol.* 8, 532–554. doi: 10.1016/j.pbi.2005.07.003
- Ludwig-Muller, J. (2011). Auxin conjugates: their role for plant development and in the evolution of land plants. *J. Exp. Bot.* 62, 1757–1773. doi: 10.1093/jxb/erq412
- Ludwig-Müller, J., Jülke, S., Bierfreund, N. M., Decker, E. L., and Reski, R. (2008). Moss (*Physcomitrella patens*) GH3 proteins act in auxin homeostasis. *New Phytol.* 181, 323–338. doi: 10.1111/j.1469-8137.2008.02677.x
- Mauch-Mani, B., and Mauch, F. (2005). The role of abscisic acid in plant-pathogen interactions. *Curr. Opin. Plant Biol.* 8, 409–414. doi: 10.1016/j.pbi.2005.05.015
- Nakazawa, M., Yabe, N., Ichikawa, T., Yamamoto, Y. Y., Yoshizumi, T., Hasunuma, K., et al. (2001). DFL1, an auxin-responsive GH3 gene homologue, negatively regulates shoot cell elongation and lateral root formation, and positively regulates the light response of hypocotyl length. *Plant J.* 25, 213–221. doi: 10.1046/j.1365-313x.2001.00957.x
- Nobuta, K., Okrent, R. A., Stoutemyer, M., Rodibaugh, N., Kempema, L., and Wildermuth, M. C., et al. (2007). The GH3 acyl adenylase family member PBS3

- regulates salicylic acid-dependent defense responses in *Arabidopsis*. *Plant Physiol.* 144, 1144–1156. doi: 10.1104/pp.107.097691
- Okrent, R. A., Brooks, M. D., and Wildermuth, M. C. (2009). *Arabidopsis* GH3.12 (PBS3) conjugates amino acids to 4-substituted benzoates and is inhibited by salicylate. *J. Biol. Chem.* 284, 9742–9754. doi: 10.1074/jbc.M806662200
- Park, J. E., Park, J. Y., Kim, Y. S., Staswick, P. E., Jeon, J., Yun, J., et al. (2007). GH3-mediated auxin homeostasis links growth regulation with stress adaptation response in *Arabidopsis*. *J. Biol. Chem.* 282, 10036–10046. doi: 10.1074/jbc.M610524200
- Peat, T. S., Bottcher, C., Newman, J., Lucent, D., Cowieson, N., and Davies, C. (2012). Crystal structure of an indole-3-acetic acid amido synthetase from grapevine involved in auxin homeostasis. *Plant Cell* 24, 4525–4538. doi: 10.1105/tpc.112.102921
- Prasad, K., Sriram, P., and Usha, V. (2005). OsMADS1, a rice MADS box factor, controls differentiation of specific cell type in lemma and plea and is an early-acting regulator of inner floral organs. *Plant J.* 43, 915–928. doi: 10.1111/j.1365-313X.2005.02504.x
- Prince, V. E., and Pickett, F. B. (2002). Splitting pairs: the diverging fates of duplicated genes. *Nat. Rev. Genet.* 3, 827–837. doi: 10.1038/nrg928
- Sani, E., Herzyk, P., Perrella, G., Colot, V., and Amtmann, A. (2013). Hyperosmotic priming of *Arabidopsis* seedlings establishes a long-term somatic memory accompanied by specific changes of the epigenome. *Genome Biol.* 14:R59. doi: 10.1186/gb-2013-14-6-r59
- Sato, S., Nakamura, Y., Kaneko, T., Asamizu, E., Kato, T., Nakamura, Y., et al. (2008). Genome structure of the legume, *Lotus japonicus*. *DNA Res.* 15, 227–239. doi: 10.1093/dnares/dsn008
- Schmutz, J., Cannon, S. B., Schlueter, J., Ma, J., Mitros, T., Nelson, W., et al. (2010). Genome sequence of the palaeopolyploid soybean. *Nature* 463, 178–183. doi: 10.1038/nature08670
- Severin, A. J., Woody, J. L., Bolon, Y. T., Joseph, B., Diers, B. W., Farmer, A. D., et al. (2010). RNA-Seq Atlas of *Glycine max*: a guide to the soybean transcriptome. *BMC Plant Biol.* 10:160. doi: 10.1186/1471-2229-10-160
- Singh, V. K., Garg, R., and Jain, M. (2013). A global view of transcriptome dynamics during flower development in chickpea by deep sequencing. *Plant Biotechnol. J.* 11, 691–701. doi: 10.1111/pbi.12059
- Staswick, P. E., Serban, B., Rowe, M., Tiryaki, I., Maldonado, M. T., Maldonado, M. C., et al. (2005). Characterization of an *Arabidopsis* enzyme family that conjugates amino acids to indole-3-acetic acid. *Plant Cell* 17, 616–627. doi: 10.1105/tpc.104.026690
- Staswick, P. E., Tiryaki, I., and Rowe, M. L. (2002). Jasmonate response locus JARI and several related *Arabidopsis* genes encode enzymes of the firefly luciferase superfamily that show activity on jasmonic, salicylic and indole-3-acetic acids in an assay for adenylation. *Plant Cell* 14, 1405–1415. doi: 10.1105/tpc.000885
- Takase, T., Nakazawa, M., Ishikawa, A., Kawashima, M., Ichikawa, T., Takahashi, N., et al. (2004). ydk1-D, an auxin-responsive GH3 mutant that is involved in hypocotyl and root elongation. *Plant J.* 37, 471–483. doi: 10.1046/j.1365-313X.2003.01973.x
- Tebbj, F., Nantel, A., and Matton, D. P. (2010). Transcription profiling of fertilization and early seed development events in a solanaceous species using a 7.7 K cDNA microarray from *Solanum chacoense* ovules. *BMC Plant Biol.* 10:174. doi: 10.1186/1471-2229-10-174
- Terol, J., Domingo, C., and Talon, M. (2006). The GH3 family in plants: genome wide analysis in rice and evolutionary history based on EST analysis. *Gene* 371, 279–290. doi: 10.1016/j.gene.2005.12.014
- Ulmasov, T., Liu, Z. B., Hagen, G., and Guilfoyle, T. J. (1995). Composite structure of auxin response elements. *Plant Cell* 7, 1611–1623. doi: 10.1105/tpc.7.10.1611
- Varshney, R. K., Song, C., Saxena, R. K., Azam, S., Yu, S., Sharpe, A. G., et al. (2013). Draft genome sequence of chickpea (*Cicer arietinum*) provides a resource for trait improvement. *Nat. Biotechnol.* 31, 240–246. doi: 10.1038/nbt.2491
- Verdier, J., Torres-Jerez, I., Wang, M., Andriankaja, A., Allen, S. N., He, J., et al. (2013). Establishment of the *Lotus japonicus* Gene Expression Atlas (LjGEA) and its use to explore legume seed maturation. *Plant J.* 74, 351–362. doi: 10.1111/tpj.12119
- Wang, D., Pei, K., Fu, Y., Sun, Z., Li, S., Liu, H., et al. (2007). Genome-wide analysis of the auxin response factors (ARF) gene family in rice (*Oryza sativa*). *Gene* 394, 13–24. doi: 10.1016/j.gene.2007.01.006
- Wang, S. K., Bai, Y. H., Shen, C. J., Wu, Y. R., Zhang, S. N., Jiang, D. A., et al. (2010). Auxin-related gene families in abiotic stress response in *Sorghum bicolor*. *Funct. Integr. Genomics* 10, 533–546. doi: 10.1007/s10142-010-0174-3
- Wei, F., Coe, E., Nelson, W., Bharti, A. K., Engler, F., Butler E., et al. (2007). Physical and genetic structure of the maize genome reflects its complex evolutionary history. *PLoS Genet* 3:e123. doi: 10.1371/journal.pgen.0030123
- Westfall, C. S., Muehler, A. M., and Jez, J. M. (2013). Enzyme action in the regulation of plant hormone responses. *J. Biol. Chem.* 288, 19304–19311. doi: 10.1074/jbc.R113.475160
- Westfall, C. S., Zubieta, C., Herrmann, J., Kapp, U., Nanao, M. H., and Jez, J. M. (2012). Structural basis for prereceptor modulation of plant hormones by GH3 proteins. *Science* 336, 1708–1711. doi: 10.1126/science.1221863
- Woodward, A. W., and Bartel, B. (2005). Auxin: regulation, action, and interaction. *Ann. Bot.* 95, 707–735. doi: 10.1093/aob/mci083
- Wu, J., Liu, S., Guan, X., Chen, L., He, Y., Wang, J., et al. (2014). Genome-wide identification and transcriptional profiling analysis of auxin response-related gene families in cucumber. *BMC Res. Notes* 7:218. doi: 10.1186/1756-0500-7-218
- Wu, J., Wang, F., Cheng, L., Kong, F., Peng, Z., Liu, S., et al. (2011). Identification, isolation and expression analysis of auxin response factor (ARF) genes in *Solanum lycopersicum*. *Plant Cell Rep.* 30, 2059–2073. doi: 10.1007/s00299-011-1113-z
- Young, N. D., Debellé, F., Oldroyd, G. E., Geurts, R., Cannon, S. B., Udvardi, M. K., et al. (2011). The *Medicago* genome provides insight into the evolution of rhizobial symbioses. *Nature* 480, 520–524. doi: 10.1038/nature10625
- Yuan, H. Z., Zhao, K., Lei, H. J., Shen, X. J., Liu, Y., Liao, X., et al. (2013). Genome-wide analysis of the GH3 family in apple (*Malus domestica*). *BMC Genomics* 14:297. doi: 10.1186/1471-2164-14-297
- Zhang, S. W., Li, C. H., Cao, J., Zhang, Y. C., Zhang, S. Q., Xia, Y. F., et al. (2009). Altered architecture and enhanced drought tolerance in rice via the downregulation of indole-3-acetic acid by TLD1/OsGH3.13 activation. *Plant Physiol.* 151, 1889–1901. doi: 10.1104/pp.109.146803
- Zhang, Z. Q., Li, Q., Li, Z. M., Staswick, P. E., Wang, M. Y., Zhu, Y., et al. (2007). Dual regulation role of GH3.5 in salicylic acid and auxin signaling during *Arabidopsis*-*Pseudomonas syringae* interaction. *Plant Physiol.* 145, 450–464. doi: 10.1104/pp.107.106021
- Zhao, Y. (2010). Auxin biosynthesis and its role in plant development. *Annu. Rev. Plant Biol.* 61, 49–64. doi: 10.1146/annurev-arplant-042809-112308

Conflict of Interest Statement: The authors declare that the research was conducted in the absence of any commercial or financial relationships that could be construed as a potential conflict of interest.

Received: 21 October 2014; paper pending published: 10 December 2014; accepted: 18 December 2014; published online: 14 January 2015.

Citation: Singh VK, Jain M and Garg R (2015) Genome-wide analysis and expression profiling suggest diverse roles of GH3 genes during development and abiotic stress responses in legumes. *Front. Plant Sci.* 5:789. doi: 10.3389/fpls.2014.00789

This article was submitted to *Plant Genetics and Genomics*, a section of the journal *Frontiers in Plant Science*.

Copyright © 2015 Singh, Jain and Garg. This is an open-access article distributed under the terms of the Creative Commons Attribution License (CC BY). The use, distribution or reproduction in other forums is permitted, provided the original author(s) or licensor are credited and that the original publication in this journal is cited, in accordance with accepted academic practice. No use, distribution or reproduction is permitted which does not comply with these terms.