



# Berberine Could Ameliorate Cardiac Dysfunction via Interfering Myocardial Lipidomic Profiles in the Rat Model of Diabetic Cardiomyopathy

Shifen Dong<sup>1\*</sup>, Shuofeng Zhang<sup>1</sup>, Zhirong Chen<sup>1</sup>, Rong Zhang<sup>1</sup>, Linyue Tian<sup>1</sup>, Long Cheng<sup>1</sup>, Fei Shang<sup>2</sup> and Jianning Sun<sup>1\*</sup>

<sup>1</sup> School of Chinese Materia Medica, Beijing University of Chinese Medicine, Beijing, China, <sup>2</sup> Department of Pharmacology, Analysis and Testing Center, Beijing University of Chemical Technology, Beijing, China

## OPEN ACCESS

### Edited by:

Xinran Ma,  
East China Normal University, China

### Reviewed by:

Qun Liu,  
China Pharmaceutical University,  
China  
Lin Li,  
Xuanwu Hospital, Capital Medical  
University, China

### \*Correspondence:

Shifen Dong  
tedong4444@gmail.com  
Jianning Sun  
jn\_sun@sina.com

### Specialty section:

This article was submitted to  
Clinical and Translational Physiology,  
a section of the journal  
Frontiers in Physiology

**Received:** 05 April 2018

**Accepted:** 12 July 2018

**Published:** 02 August 2018

### Citation:

Dong S, Zhang S, Chen Z, Zhang R,  
Tian L, Cheng L, Shang F and Sun J  
(2018) Berberine Could Ameliorate  
Cardiac Dysfunction via Interfering  
Myocardial Lipidomic Profiles in the  
Rat Model of Diabetic  
Cardiomyopathy.  
Front. Physiol. 9:1042.  
doi: 10.3389/fphys.2018.01042

**Background:** Diabetic cardiomyopathy (DCM) is considered to be a distinct clinical entity independent of concomitant macro- and microvascular disorders, which is initiated partly by disturbances in energy substrates. This study was to observe the dynamic modulations of berberine in DCM rats and explore the changes of lipidomic profiles of myocardial tissue.

**Methods:** Sprague-Dawley (SD) rats were fed high-sucrose and high-fat diet (HSFDF) for totally 22 weeks and intraperitoneally (i.p.) injected with 30 mg/kg of streptozotocin (STZ) at the fifth week to induce DCM. Seventy-two hours after STZ injection, the rats were orally given with berberine at 10, 30 mg/kg and metformin at 200 mg/kg, respectively. Dynamic changes of cardiac function, heart mass ratios and blood lipids were observed at 4, 10, 16, and 22, respectively. Furthermore, lipid metabolites in myocardial tissue at week 16 were profiled by the ultra-high-performance liquid chromatography coupled to a quadrupole time of flight mass spectrometer (UPLC/Q-TOF/MS) approach.

**Results:** Berberine could protect against cardiac diastolic and systolic dysfunctions, as well as cardiac hypertrophy, and the most effective duration is with 16-week of administration. Meanwhile, 17 potential biomarkers of phosphatidylcholines (PCs), phosphatidylethanolamines (PEs) and sphingolipids (SMs) of DCM induced by HSFDF/STZ were identified. The perturbations of lipidomic profiles could be partly reversed with berberine intervention, i.e., PC (16:0/20:4), PC (18:2/0:0), PC (18:0/18:2), PC (18:0/22:5), PC (20:4/0:0), PC (20:4/18:0), PC (20:4/18:1), PC (20:4/20:2), PE (18:2/0:0), and SM (d18:0/16:0).

**Conclusions:** These results indicated a close relationship between PCs, PEs and SMs and cardiac damage mechanisms during development of DCM. The therapeutic effects of berberine on DCM are partly caused by interferences with PCs, PEs, and SMs metabolisms.

**Keywords:** diabetic cardiomyopathy, myocardial tissue, lipidomic profiles, berberine, UPLC/Q-TOF/MS

## INTRODUCTION

Diabetes mellitus (DM) is among the most prevalent and morbid chronic diseases, and the worldwide prevalence of diabetic people is predicted to dramatically increase from 415 million to 642 million by 2040 (Boles et al., 2017; Ingelfinger and Jarcho, 2017; Ruiz et al., 2018). In China, there also be a rapid increase in the prevalence of DM associated with recent economic development, and the current diabetic subjects were ~113.9 million, and a further 493.4 million persons with prediabetes (Xu et al., 2013; Chan et al., 2014). And the type 2 DM that closely related to obesity is the main contributor to the increase of DM prevalence (Ma et al., 2017).

Diabetes mellitus and prediabetes status increase all cause and cardiovascular mortality (Huang et al., 2017). Diabetic cardiomyopathy (DCM) is considered to be a distinct clinical entity independent of concomitant macro- and microvascular disorders (Huynh et al., 2014; Jia et al., 2018), and occurs in the absence of coronary artery disease, valvular disease, and other conventional cardiovascular risk factors, which could induce direct damage to myocardium and lead to heart failure (Loffroy et al., 2009; Trachanas et al., 2014; Jia et al., 2018). Various potential molecular and cellular mechanisms are involved in the pathophysiological process of DCM (Ruiz et al., 2018), such as disturbances in myocardial energy utilization, calcium signaling pathway, as well as mitochondrial dysfunction (Palomer et al., 2013).

The metabolic disturbances in DCM are mainly characterized by triglycerides (TGs) accumulation in the myocardial tissue, excessive lipid oxidation, and reduced glucose utilization (Bakshi et al., 2015), which may lead to the exceeding oxidative stress, mitochondrial dysfunction and apoptosis of cardiomyocytes (Palomer et al., 2013; Bakshi et al., 2015). In addition, the lipidomic profiling extends far beyond detection of total cholesterol (TCH) and TGs, which is becoming increasingly useful to clarify the interactions between lipid metabolism, diet, and metabolic diseases (Meikle and Summers, 2017).

Berberine is a kind of isoquinoline alkaloids that can be extracted from various plants, such as *Coptis chinensis* (Chinese goldthread), *Berberis vulgaris* (barberry), and *Phellodendron amurense* (Amur corktree), which is widely used in traditional Chinese medicine (Cicero and Baggioni, 2016). The current clinical and experimental research have suggested a potential effect of berberine on regulation of lipid and glucose homeostasis, as well as inhibiting inflammation and cancer growth (Wang et al., 2018). Oral administration of berberine could improve hypercholesterolemic patients and reduce serum TCH, TG, and low-density lipoprotein (LDL)—cholesterol (Kong et al., 2004). Berberine could also improve nonalcoholic fatty liver disease patients and alter circulating ceramides (Chang et al., 2016). The lowering lipid effect of berberine was related to the activation of adenosine monophosphate (AMP)-activated protein kinase (AMPK) pathway (Jiang et al., 2016) and regulation of LDL receptor (LDLR) post-transcription, as well as ameliorating abnormal lipid deposition and reducing oxidative stress (Sun et al., 2017). However, little is known about the effect of berberine on lipidomic profiling in DCM subjects (Li et al., 2015).

The recent studies in DCM animal models suggested the important role of phospholipids (e.g., phosphatidylcholine and phosphatidylethanolamine) in the development of cardiac dysfunction and remodeling of DCM (Dong et al., 2017). We also found that berberine could protect against cardiac dysfunction induced by high caloric diet via promoting glucose transport and inhibiting cardiac lipid accumulation (Dong et al., 2011). The purpose of this study was to observe the dynamic pathogenesis changes of DCM and the effect of berberine on changes of myocardial lipidomic profiles in DCM rats, in order to explore novel targets for further research.

## MATERIALS

### Chemicals and Reagents

Streptozotocin (STZ), berberine chloride, and metformin were obtained from Sigma-Aldrich (St Louis, MO, USA). The STZ was dissolved in 0.1 M citrate buffer (pH = 4.5), and berberine was suspended in 0.5% sodium carboxymethyl cellulose (CMC) solution. Liquid chromatography tandem mass spectrometry (LC-MS)-grade methanol, chloroform, and acetonitrile were obtained from Thermo Fisher Scientific (Pittsburgh, PA, USA). Biochemical kits of plasma samples were purchased from Nanjing Jiancheng Bioengineering Institute (Nanjing, China) (Dong et al., 2011).

### Animal Care

Male Sprague-Dawley rats [Grade II, certificate No. SCXK (jing) 2012-0001], weighing  $180 \pm 20$  g, were purchased from Beijing Vital River Laboratory Animal Technology Co., Ltd. (Beijing, China). All animals were maintained under specific pathogen free conditions. Regular housing temperatures were maintained between 21 and 23°C with a 12 h light–12 h dark cycle. Water and various diets (regular chow diet or HSHFD) were given to animals *ad libitum*. All studies involving animals were in accordance with ethics standards of the Animal Care and Welfare Committee of Beijing University of Chinese Medicine [Certificate No. BUCM-04-2015090201-3008].

Three 100 rats were randomly divided into five groups, with 60 rats in each group. Rats in the control group (CON) were given with regular chow diet and 0.5% sodium CMC (Dong et al., 2011). Other rats were fed high-sucrose and high-fat diet (HSHFD, 2920 Kcal/kg) provided by Ke'ao Cooperation Co., Ltd. (Beijing, China), and i.p. injected with 30 mg/kg of streptozotocin (STZ) following a 12 h fast at the fifth week of HSHFD feeding to induce diabetic cardiomyopathy (DCM). Seventy-two hours following STZ injection, fasting blood glucose (FBG) levels were determined and the rats with high FBG ( $\geq 11.1$  mmol/L) were recruited for further research. In addition, rats in treated groups were i.g. administered with berberine at 10, 30 mg/kg and metformin at 200 mg/kg, respectively. And rats in DCM model group were just orally given with vehicle.

### Dynamic Assessment of Cardiac Function

Parameters of cardiac function were observed at 4 time points. After administered with berberine and metformin for 4, 10, 16, and 22 weeks, respectively, the rats were intraperitoneally

anesthetized with 35 mg/kg pentobarbital sodium following a 12 h fast. A 20 G catheter was placed in the left ventricle via the right common carotid artery for detection of cardiac function, i.e., left ventricular end diastolic pressure (LVEDP), and left ventricular systolic pressure (LVSP). Data were detected by MP150 system (BIOPAC Systems, Ins., CA, USA).

### Dynamic Assessment of Blood Lipids

Following detection of cardiac function at each time point, the whole blood was collected from the right carotid artery of rats, and transferred to tubes with anticoagulant (sodium heparin). Plasma samples were prepared by centrifuging whole blood at 2,000 g for 10 min. Levels of plasma TCH and TG were determined by ultraviolet spectrophotometric approach according to the manufacturer's protocol.

### Measurement of the Whole Heart Mass and Left Ventricular Mass

After blood collection, the rats were euthanized by cervical dislocation (Reis et al., 2005). The hearts were excised and weighed. And the heart weight index (BWI) and left ventricular weight index (LVWI) were calculated, respectively (Bai et al., 2018).

BWI=heart weight (HW) / body weight (BW).

LVWI=left ventricular weight (LVW) / body weight (BW).

### UPLC/QTOF/MS Analysis

The ultra-high-performance liquid chromatography coupled to a quadruple time of flight mass spectrometer (UPLC/Q-TOF/MS, Waters MS Technologies, Manchester, UK) was applied for data collection. And the procedures were performed as described (Dunn et al., 2011; Want et al., 2013). Freeze samples of myocardial tissue were thawed at room temperature, and 100 mg of each sample was accurately weighed and homogenized in homogenization tubes by a Speed Mill Plus (Analytik Jena, Jena, Germany). One milliliter of chloroform/methanol (3:1) were added to tissue containing in the 1.5-mL centrifuge tube (Axygen MCT-150-C, Corning, NY, USA) and thoroughly mixed on a vortex mixer for 30 min, and then the protein precipitate was pelleted in a centrifuge at 4°C and 12,000 rpm for 10 min. After centrifuge, 400 µL of supernatant was carefully collected and dried in a Savant™ SpeedVac™ High Capacity Concentrators (Thermo Fisher, Pittsburgh, USA). And then 400 µL of isopropyl alcohol/acetonitrile (1:1) was added into each tube and dissolved in ultrasound. The dissolved matter was centrifuged at 12,000 rpm for 10 min, and the supernatant (100 µL) was transferred to a vial insert (200 µL) for liquid chromatography-mass spectrometry analysis.

For C<sub>18</sub> separation, mobile phase A was acetonitrile/water (60/40) and mobile phase B was isopropanol/ acetonitrile (90/10), and both A and B contained 0.1% formic acid and 10 mM ammonium acetate. The gradient conditions for reversed phase C<sub>18</sub> separation were shown in **Table 1**.

A Waters Acquity UPLC CSH C<sub>18</sub> column (2.1 × 100 mm, 1.7 µm) was operated at 45°C and 300 µL/min flow rate. And the injection volume was 2 µL. Samples were analyzed in positive and negative electrospray ionization (ESI) using Waters xevo G2

**TABLE 1** | The gradient conditions for reversed phase C<sub>18</sub> separation for lipids.

Time (min)	A (v%)	B (v%)
0	80	20
2	70	30
5	55	45
6.5	40	60
12	35	65
14	15	85
17.5	0	100
18	0	100
18.1	80	20
19.5	80	20

**TABLE 2** | Analysis condition of positive and negative electrospray ionization.

Parameter	ESI <sup>+</sup>	ESI <sup>-</sup>
Capillary voltage	3,200 V	2,300 V
Sampling cone	30 V	30 V
Desolvation temperature	400°C	400°C
Desolvation gas flow	800 L/h	800 L/h
Cone gas flow	30 L/h	40 L/h
Source temperature	120°C	120°C

QTOF Mass Spectrometer. And conditions of ESI<sup>+</sup> and ESI<sup>-</sup> were showed in **Table 2**.

### Statistical Methods

All of the MS data were processed by Progenesis QI software (Nonlinear Dynamics, Newcastle, UK). And the steps that carried out to conduct a sample analysis, included imputing raw data, peak alignment, picking, and normalization to produce peak intensities for retention time (*t<sub>R</sub>*) and mass-to-charge ratio (*m/z*) data pairs (Saigusa et al., 2018). The range of automatic peak picking was 0.7 ~19 min. Databases including our database containing more than 600 metabolite standards and the online databases such as LIPID MAPS (<http://www.Lipidmaps.org/tools/index.html>) were used to identify the lipid metabolites (Saigusa et al., 2016). For example, in positive mode the ion of *m/z* 544.34034 (*t<sub>R</sub>*, 1.3903 min) was speculated as C<sub>28</sub>H<sub>50</sub>NO<sub>7</sub>P by analyzing the elemental composition and the fractional isotope abundance (Qian et al., 2017). Then, this metabolite was identified as PC (20:4/0:0) after comparing the tandem mass spectrometry (MS/MS) data with Lipid Standards MS/MS spectra in LIPID MAPS.

A multivariate analysis was performed using the SIMCA 14.1 software (Meikle et al., 2014) (Umetrics AB, Umea, Sweden). An unsupervised model of principal component analysis (PCA) with unit variance scaling was used to assess the holistic metabolome alterations among groups and monitor the stability of this study. A supervised model of orthogonal projection to latent structures discriminant analysis (OPLS-DA) with unit variance scaling was performed to maximize the distance between groups and identify important variables with an important contribution to

the classification according to the variable important in the projection (VIP) values. The permutation test was conducted for 200 times to evaluate the risk of over-fitting for the OPLS-DA model.

Additional data are shown as mean  $\pm$  SD. In each experiment,  $n$  defines the number of rats. Statistical significance between multiple groups was evaluated by one-way analysis of variance (ANOVA) followed by least significant difference (LSD) *post-hoc* tests using SPSS version 17.0.  $P < 0.05$  was considered as statistically significant.

## RESULTS

### Berberine Improved Cardiac Diastolic Function in DCM Rats

In this study, the dynamic changes of cardiac function in rats were observed at week 4, 10, 16, and 22, respectively. When compared with the normal rats, LVEDP values in DCM rats increased from week 10 to week 22 and showed significant changes at week 16 ( $P < 0.05$ ) and week 22 ( $P < 0.05$ ), respectively. In addition, only after 16-week administration with berberine at 10, 30 mg/kg and metformin at 200 mg/kg, respectively, values of LVEDP showed remarkable reduction ( $P < 0.01$ ), when compared with the DCM rats (Figure 1). These results indicated that berberine could protect against cardiac diastolic dysfunction, and the most effective duration is with 16-week administration.

### Berberine Improved Cardiac Systolic Function in DCM Rats

When compared with control rats, values of LVSP were significantly decreased at week 10 ( $P < 0.01$ ), week 16 ( $P < 0.05$ ), and week 22 ( $P < 0.05$ ). After administration with berberine at 30 mg/kg and metformin at 200 mg/kg, respectively, LVSP levels were increased significantly at week 10 and week 16 ( $P < 0.05$ ) compared to DCM group (Figure 2). These results indicated that berberine could protect against cardiac systolic dysfunction, and the most effective duration is with 10–16 weeks of administration.

### Berberine Decreased the Ratios of HW/BW and LVW/BW in DCM Rats

When compared with the control rats, values of both LVW/BW and HW/BW were remarkably increased from week 4 to week 22 ( $P < 0.05$  or  $P < 0.01$ ) in DCM model rats, which indicated a cardiac hypertrophy status. Berberine at 30 mg/kg caused a significant reduction in HW/BW at week 16 ( $P < 0.05$ ), when compared with DCM rats (Figure 3).

### Blood Lipid Parameters

Levels of plasma TCH and TG of DCM rats were increased significantly from week 4 to week 22 ( $P < 0.05$  or  $P < 0.01$ ). Berberine 30 mg/kg caused a significant reduction in TCH levels at week 16 ( $P < 0.05$ ), when compared with DCM rats (Figure 4).

Taken in concert, all above experimental results manifested protection effects of berberine on DCM rats. Berberine could protect against cardiac diastolic and systolic dysfunction, as well

as cardiac hypertrophy, and the most effective duration is around 16-week administration. Therefore, the samples at this time point were selected for the subsequent lipidomic profiles analysis.

### Lipidomic Profiles Analysis of Myocardial Tissue

Metabolic profiles of the myocardial tissue were acquired by UPLC/Q-TOF/MS approach in ESI<sup>+</sup> and ESI<sup>-</sup> modes. Totally, 66390 positive ion peaks and 9030 negative ion peaks were obtained.

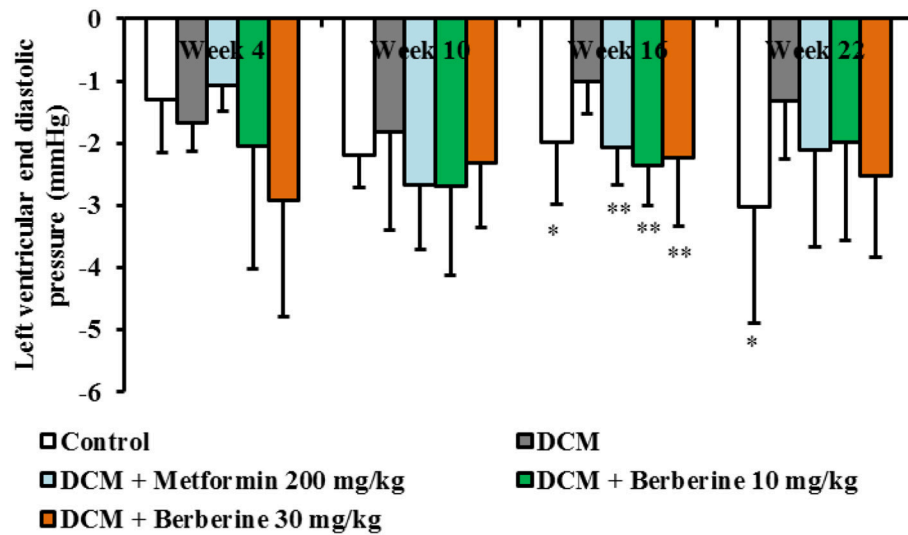
The quality control (QC) samples were used to monitor the stability and performance of LC-MS system and the reproducibility of the samples. The pretreatment of QC samples was in the same manner as the test samples. In this study, five QC samples of myocardial tissue were inserted at regular intervals (6~8 samples) into the run sequence in order to assess the repeatability of data (Want et al., 2013). The features were selected according to their coefficients of variation (CVs) with quality control, and features with CVs over 15% were eliminated (Saigusa et al., 2016). As shown in Figure 5, the cluster of the QC samples in the principal component analysis (PCA) scores scatter plot exhibited stability and repeatability of this lipidomic analysis system (Xu et al., 2017).

### Identification of Potential Biomarkers

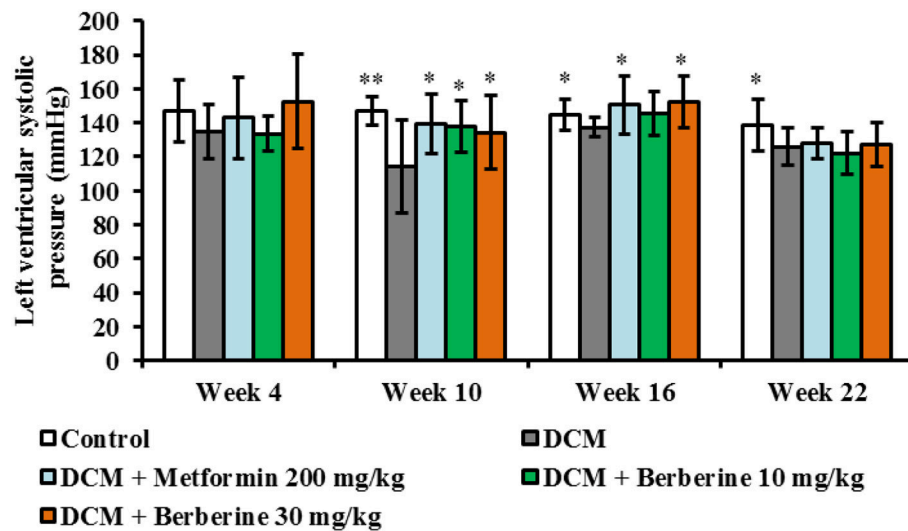
The PCA was applied to analyze all acquired observations in order to investigate the global lipidomics metabolism variations. The lipid metabolic phenotypes based on all imported samples could be classified by the approach of PCA method (Xu et al., 2017). An overview of all samples in the data and a clear grouping trend ( $R^2X$ , 0.861;  $Q^2$ , 0.752) between the control group, DCM group, DCM + Metformin 200 mg/kg group, DCM + Berberine 10 mg/kg group and DCM + Berberine 30 mg/kg group could be observed. The DCM group vs. control group exhibited an improved separation. This observation indicated that DCM status may disturb the metabolism of the lipids, when compared to control group. Berberine at 10, 30 mg/kg and metformin at 200 mg/kg showed interferences in the DCM rats, although the trajectory of the drug-treated groups did not return to the normal state (Figure 6).

To further confirm the certain lipids used as selective and sensitive biomarkers for pathogenesis of diabetic cardiomyopathy, the OPLS-DA approach was used to compare the changes of lipid metabolites between the DCM and the control rats (Xu et al., 2017). A clear separation of the control rats and the DCM rats was observed as demonstrated by OPLS-DA scores scatter plot (Figure 7A). In the OPLS-DA model, the cumulative  $R^2Y$  and  $Q^2$  are 0.966 and 0.901, respectively. No over-fitting was observed according to results of chance permutation (Figure 7B). Afterwards, the significant changed lipid metabolites of the DCM group compared to the normal group were filtered out based on variable important in the projection (VIP) values (VIP > 1) and  $t$ -test ( $P < 0.05$ ).

Subsequently, total 17 potential lipids biomarkers of DCM models, including 12 PCs, 3 PEs, and 2 SMs were further studied (Table 3).



**FIGURE 1** | Berberine improved cardiac diastolic function in DCM rats. Diabetic cardiomyopathy (DCM) model rats were established by feeding with high-sucrose and high-fat diet (HSHFD) consisting of regular diet (66.5%), lard (10%), sucrose (20%), cholesterol (2.5%), and bile salt (1%) and intraperitoneally (i.p.) injected with 30 mg/kg of streptozotocin (STZ) at the fifth week. Seventy-two hours after STZ injection, berberine at the dosage of 10, 30 mg/kg, and metformin at 200 mg/kg were orally given to DCM rats, respectively, for consecutive 4, 10, 16, and 22 weeks. The dynamic changes of cardiac function were measured by invasive left ventricular catheterization in anesthetized rats. DCM, diabetic cardiomyopathy. Data were shown as mean  $\pm$  SD, with  $n = 7\sim 12$ . Statistical significance was determined by one-way analysis of variance (ANOVA) followed by least significant difference (LSD) *post-hoc* test. \* $P < 0.05$ , \*\* $P < 0.01$  vs. DCM group.

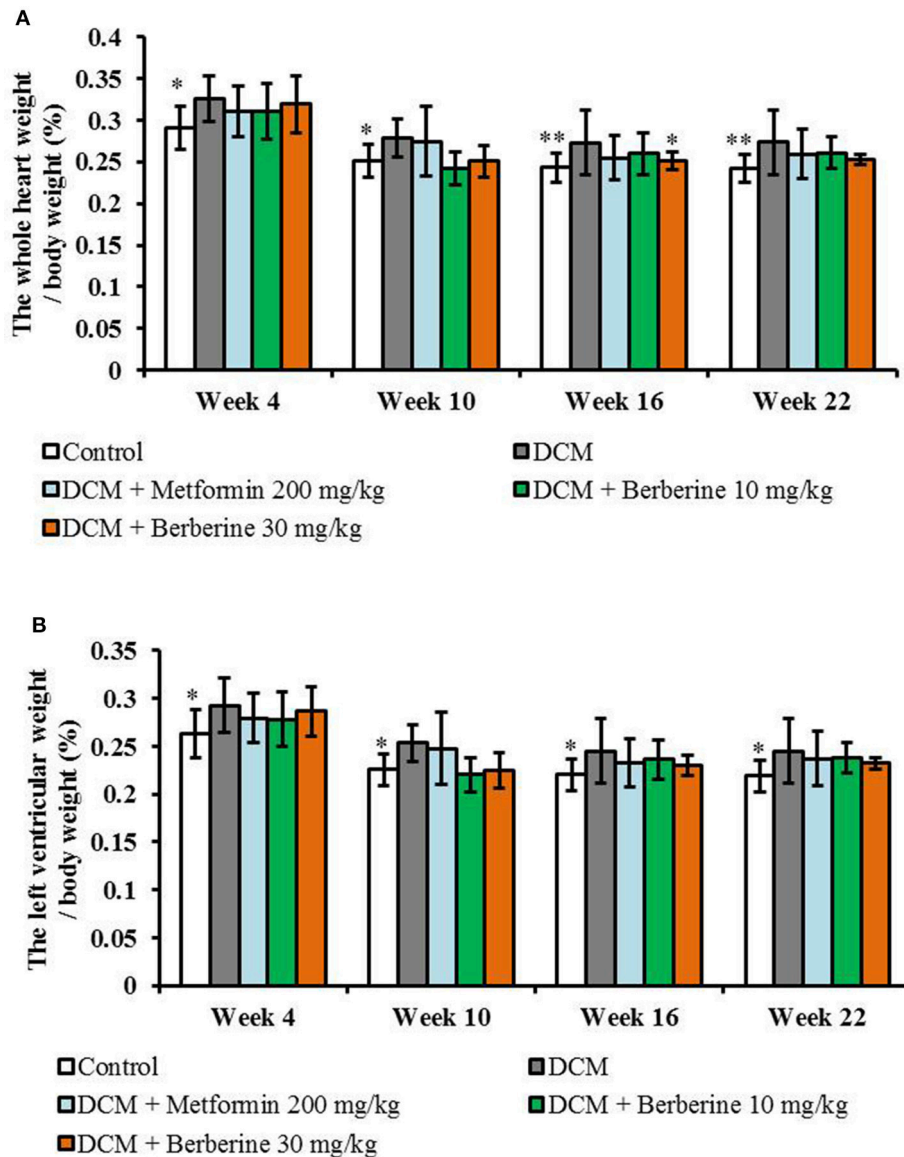


**FIGURE 2** | Berberine improved cardiac systolic function in DCM rats. DCM, diabetic cardiomyopathy. Data were shown as mean  $\pm$  SD, with  $n = 7\sim 12$ . Statistical significance was determined by one-way ANOVA followed by LSD *post-hoc* test. \* $P < 0.05$ , \*\* $P < 0.01$  vs. DCM group.

The changed levels and names of selected biomarkers were shown in **Figure 8**. Specifically, the lipid levels of 2 PCs, 2 PEs, and 2 SMs, including PC (18:0/18:2), PC (18:2/0:0), PE (P-18:0/0:0), PE (18:2/0:0), SM (d18:0/16:0), and SM (d18:1/18:1) were significantly up-regulated in the DCM rats, when compared with normal rats ( $P < 0.05$  or  $P < 0.001$ ). Meanwhile, lipid levels of 10 PCs and 1 PE, including PC (16:0/14:0), PC (16:0/16:0), PC (16:0/20:4), PC (18:0/22:5), PC (20:4/0:0), PC (20:4/18:0), PC

(20:4/18:1), PC (20:4/18:2), PC (20:4/20:2), PC (20:4/20:4), and PE (20:4/16:0) were remarkably reduced in the DCM rats, when compared with normal rats ( $P < 0.05$  or  $P < 0.001$ ).

After administered with berberine, lipid levels of 8 PCs, 1 PE, and 1 SM were significantly altered and exhibited a normal-level tendency ( $P < 0.05$ , i.e., PC (18:0/18:2), PC (18:2/0:0), PC (16:0/20:4), PC (18:0/22:5), PC (20:4/0:0), PC (20:4/18:0), PC (20:4/18:1), PC (20:4/20:2), PE (18:2/0:0), and SM (d18:0/16:0).



**FIGURE 3 |** Berberine decreased the heart weight index and left ventricular weight index in DCM rats. **(A)** Heart weight index: the whole heart weight / body weight. **(B)** Left ventricular weight index: the left ventricular weight / body weight. DCM, diabetic cardiomyopathy. Data are presented as mean  $\pm$  SD, with  $n = 7\sim 12$ . Statistical significance was determined by one-way ANOVA followed by LSD *post-hoc* test. \* $P < 0.05$ , \*\* $P < 0.01$  vs. DCM group.

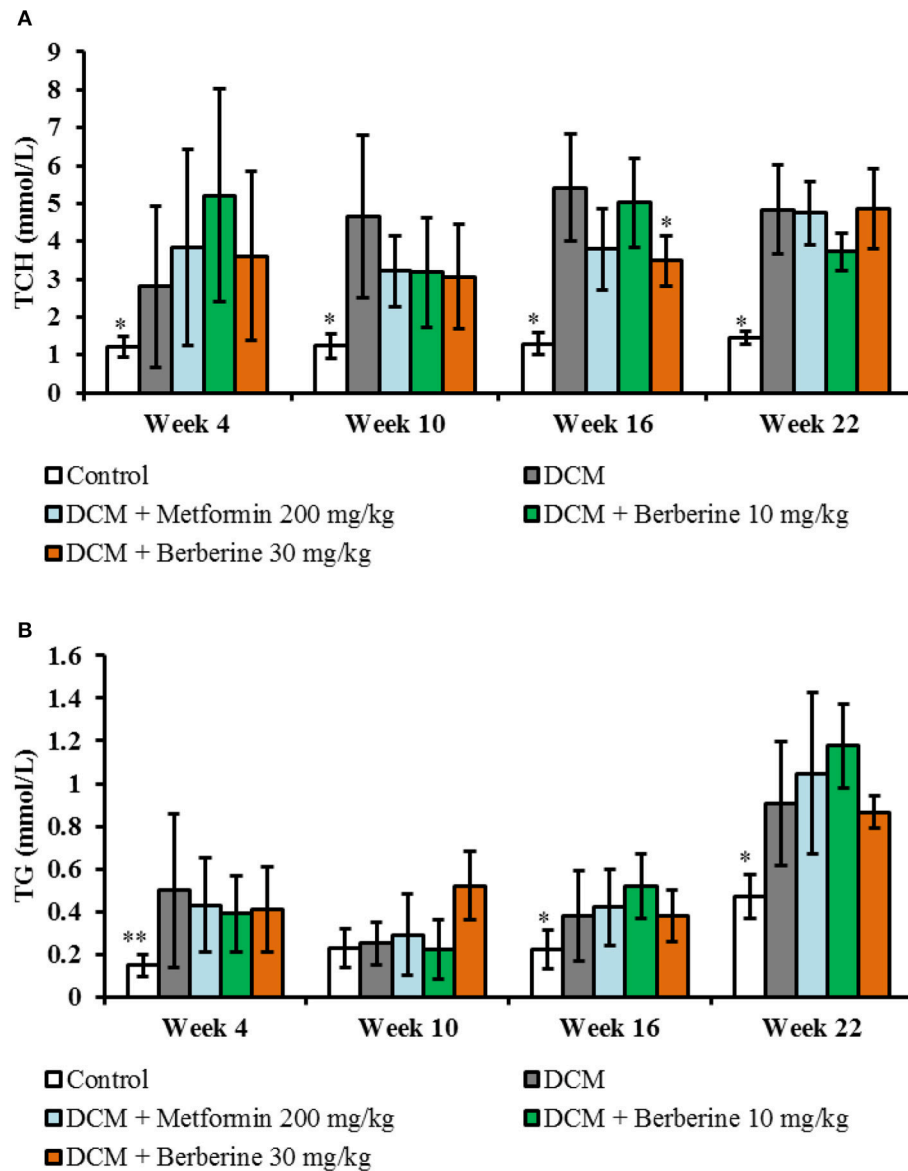
## DISCUSSION

Dyslipidemia is a major contributor to the pathological process of DCM, and the main therapeutic methods involve lowering lipid (Meikle and Summers, 2017). In the present study, we explored the association between altered lipidomic profiling and cardiac dysfunction in the diabetic rats, as well as the regulation of berberine.

Current lipid parameters commonly used clinically are including TG, TCH, high-density lipoprotein and low-density lipoprotein cholesterol, which provide a relative narrow snapshot of the dynamic processes of lipid metabolism (Wong et al.,

2013; Meikle et al., 2014). The application of lipidomics analyzed approach has been greatly expanding our understanding of the extent and complexity of lipid dysregulation in diabetes and its complications (Meikle and Summers, 2017). Lipidomics has been used to explore the physiological functions of lipid molecules (Hu and Zhang, 2018), and it was also applied to discover the biomarkers for diagnosis and therapy of metabolic disease (Meikle et al., 2014; Hu and Zhang, 2018).

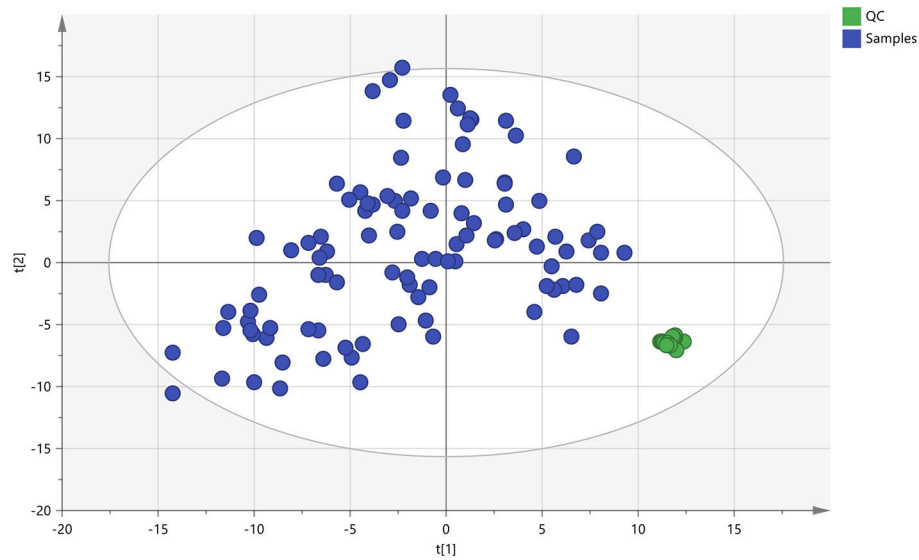
The use of HPLC increases the sensitivity for low abundance lipids and their metabolites (Zhao et al., 2015). Identification of lipid metabolites in this method is achieved on the basis of searching for accurate mass-to-charge ratios from databases



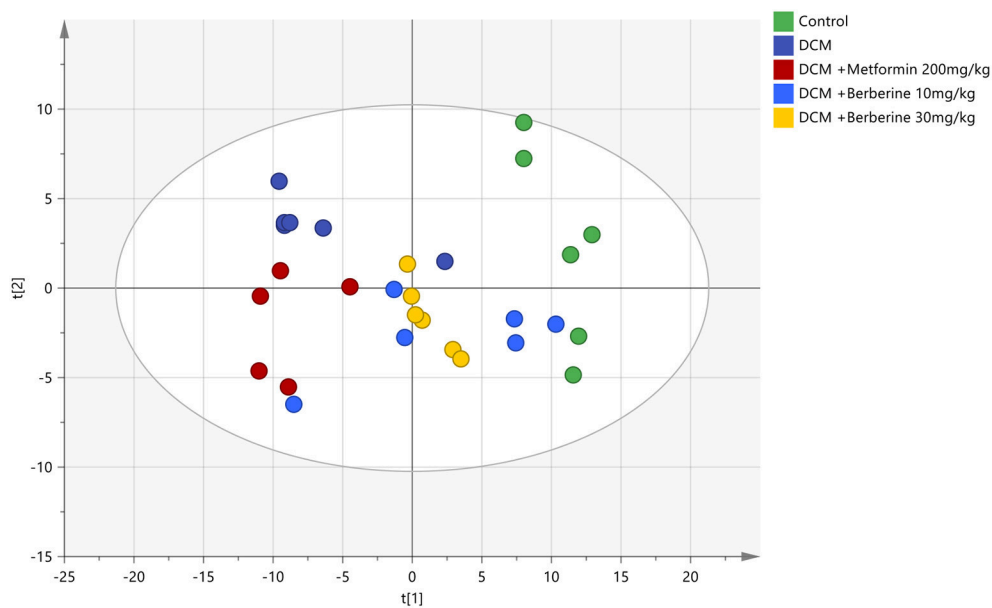
**FIGURE 4 |** Blood lipid parameters. **(A)** Dynamic changes of total cholesterol. **(B)** Dynamic changes of triglyceride. TCH, total cholesterol; TG, triglyceride; DCM, diabetic cardiomyopathy. Data are presented as mean  $\pm$  SD, with  $n = 7\sim 12$ . Statistical significance was evaluated by one-way ANOVA followed by LSD *post-hoc* test. \* $P < 0.05$ , \*\* $P < 0.01$  vs. DCM model group.

of known lipids and further tandem mass spectrometry based experiments (Nygren et al., 2011; Meikle et al., 2014). This approach has been applied for the analysis of plasma and serum in depicting the pathophysiological mechanism of disease (Laaksonen et al., 2006; Yetukuri et al., 2011; Meikle et al., 2014). Furthermore, when investigating the molecular mechanisms of diseases, and the metabolic changes induced by pathophysiological stress are considered to be more concentrated in some specific organs in localized diseases such as DCM, the use of related organs in this platform are useful (Nam et al., 2017; Hu and Zhang, 2018).

Our previous research indicated that berberine at 30 mg/kg orally administered for 6 weeks could attenuate cardiac dysfunction and cardiac hypertrophy in rats induced by feeding high-sucrose/fat diet plus i.p. injection with streptozotocin (30 mg/kg) through alleviating cardiac lipid accumulation and promoting glucose transport (Dong et al., 2011). Then, we used UPLC/Q-TOF/MS analyzed approach to explore the changes of myocardial lipidomic profiles in diabetic rats. And the results manifested that the cardiac lipid metabolites have remarkable correlation with changes of cardiac function and heart mass ratio (Dong et al., 2017).



**FIGURE 5 |** The PCA scores plot of QC and On-test Samples. Quality control (QC) samples were applied to exhibit the stability of the liquid chromatography-mass spectrometer (LC-MS) system. The cluster of the quality control samples in the principal component analysis scores scatter plot showed a satisfactory stability and repeatability of this lipidomic analysis approach. The colors display the subjects from different groups. ●: QC, quality control; ●: Test samples.



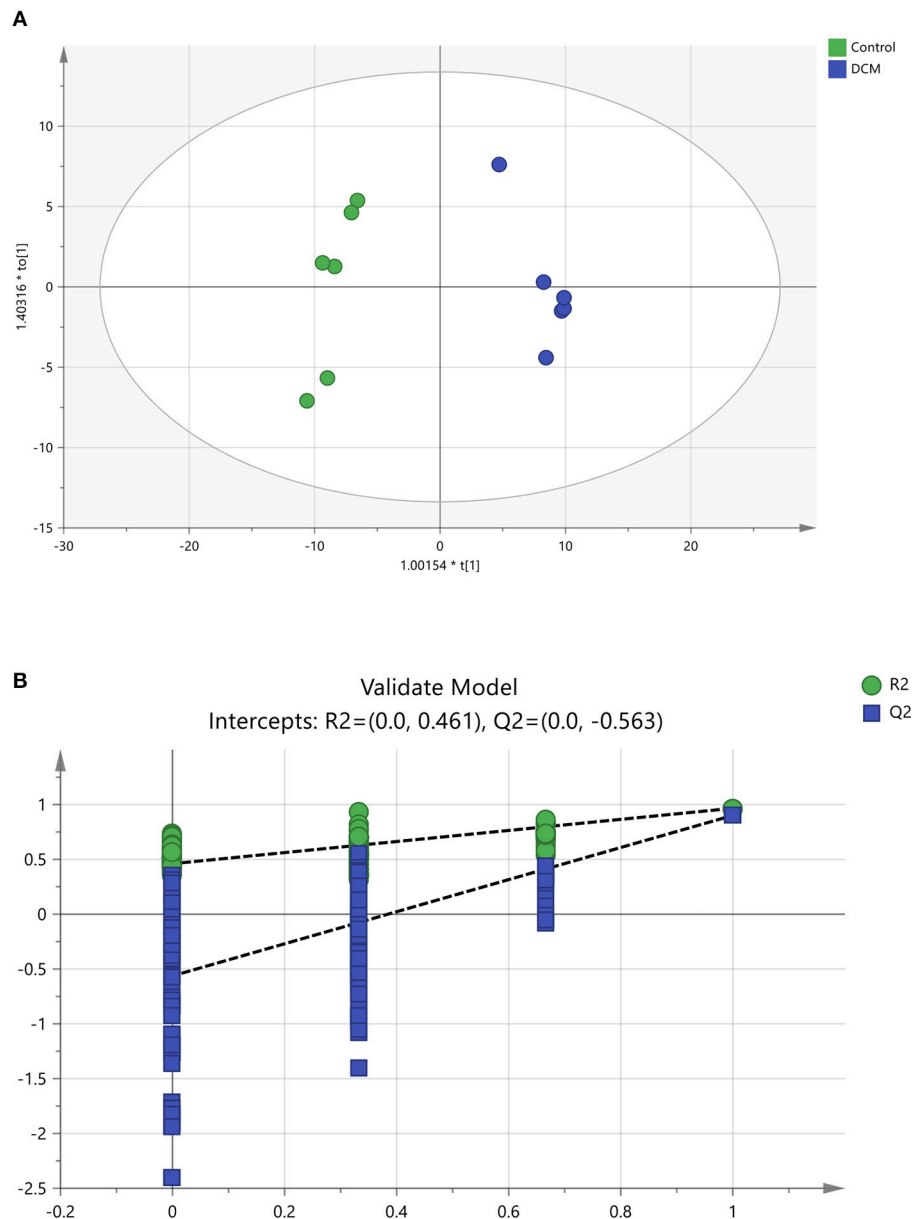
**FIGURE 6 |** The PCA scores plot of five groups. DCM, diabetic cardiomyopathy. The colors display the subjects from different groups. ●, Control; ●, DCM; ●, DCM + Metformin 200 mg/kg; ●, DCM + Berberine 10 mg/kg; ●, DCM + Berberine 30 mg/kg.

In this study, we observed dynamic changes of cardiac functions, heart mass ratios and blood lipids at week 4, 10, 16, and 22, respectively. And the results demonstrated that berberine could protect against cardiac diastolic and systolic dysfunctions, as well as cardiac hypertrophy, and the most effective duration is with 16-week administration. In addition, 17 potential biomarkers of phosphatidylcholines (PCs), phosphatidylethanolamine (PEs) and sphingolipid (SMs) of

DCM induced by HSF/D/STZ have been identified. Furthermore, our results manifested that the perturbations could be partly reversed by berberine intervention, i.e., PC (18:0/18:2), PC (18:2/0:0), PC (16:0/20:4), PC (18:0/22:5), PC (20:4/0:0), PC (20:4/18:0), PC (20:4/18:1), PC (20:4/20:2), PE (18:2/0:0), and SM (d18:0/16:0).

Many phospholipid and sphingolipid metabolites have been proved to be important components linking obesity to type





**FIGURE 7 |** The OPLS-DA scores scatter plot and validation plot. **(A)** The orthogonal projection to latent structures discriminant analysis (OPLS-DA) scores scatter plot obtained from the diabetic cardiomyopathy (DCM) group vs. control group. **(B)** Validation plot for OPLS-DA model. The permutation test was conducted for 200 times to evaluate the risk of over-fitting for the OPLS-DA model. DCM, diabetic cardiomyopathy. **(A)** ●, Control, ●, DCM model group; **(B)** ●,  $R^2$ , ■,  $Q^2$ .

2 DM and cardiovascular diseases (Meikle and Summers, 2017). The major components of the phospholipids involve the phosphatidylcholines (PCs) and phosphatidylethanolamines (PEs).

As the major constituents of the biologic membranes, the phospholipids can prevent the stability of cell membrane degeneration and promote recovery via improving cell membrane, protecting cells and mitochondria membrane against injury, promoting synthesis of lipoproteins, and increasing membrane fluidity and enzyme activities (Morrison

et al., 2012; Zhang et al., 2014). Phospholipids also allow selected molecules to diffuse or move across the cell membrane into cells (Bishop and Bell, 1988; Zhang et al., 2014). And the membrane phospholipids are also the reservoir of lipid mediators and signaling molecules such as arachidonic acid (AA), prostaglandins, inositol triphosphate, endocannabinoids, and diacylglycerol (Lamari et al., 2013).

Besides important role involved in many cell processes, the phospholipids are the probable modulators of cardiac muscle insulin resistance rather than diacylglycerol or triacylglycerol

**TABLE 3** | Identification of potential biomarkers related to development of diabetic cardiomyopathy rats.

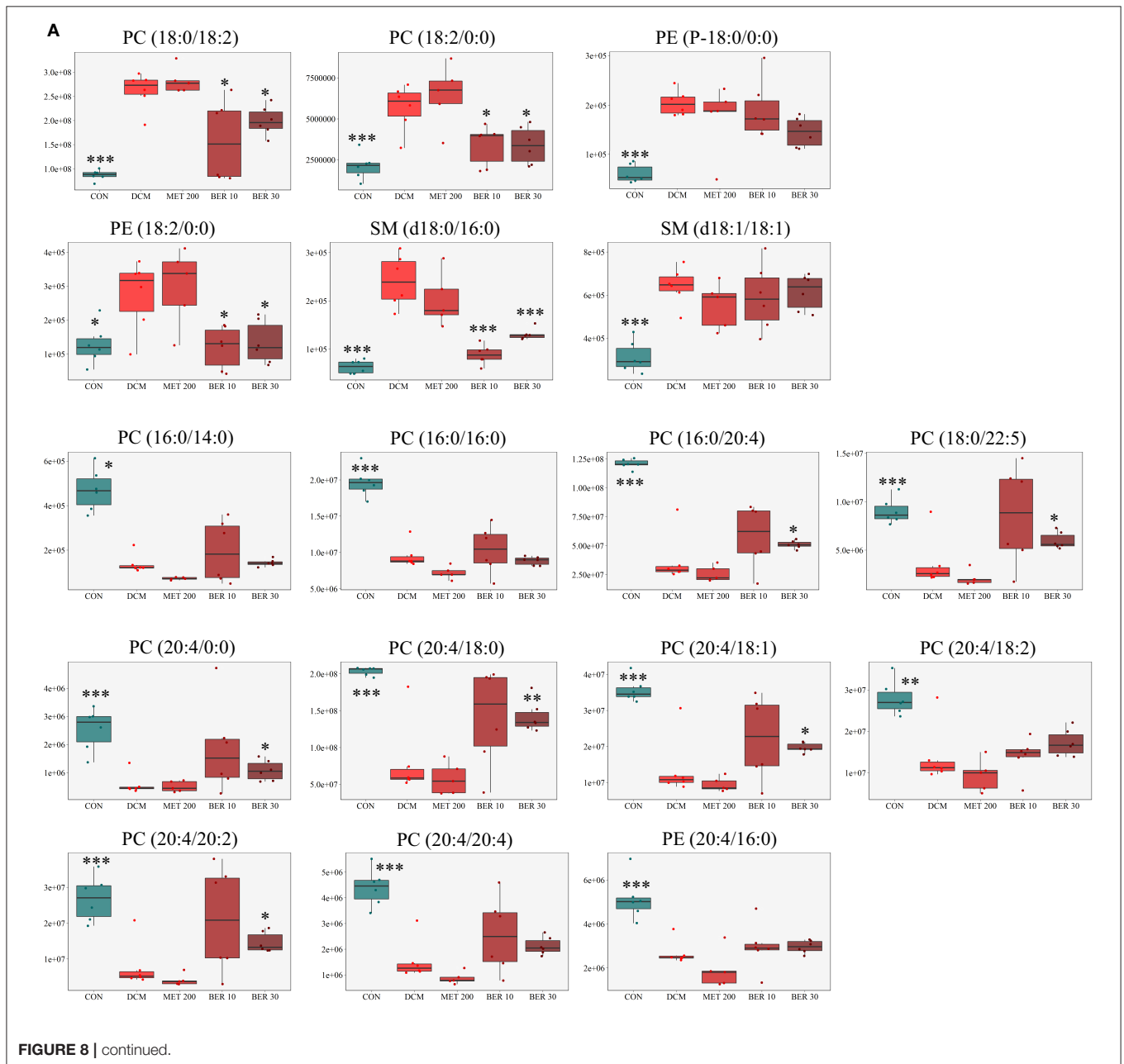
No.	t <sub>R</sub> (min)	Mass-to-charge (m/z) ratios	Metabolites	DCM vs. CON		MET 200 vs. DCM		BER 10 vs. DCM		BER 30 vs. DCM		
				VIP values	P-values	FC values	P-values	FC values	P-values	FC values	P-values	
1	12.0796	786.60079	PC(18:0/18:2)	3.006781	1.32E-07	3.0068	0.327604	1.0807	0.013098	0.7619	0.027139	0.6058
2	1.5160	520.34032	PC(18:2/0:0)	2.690564	0.000507	2.6906	0.555070	1.1357	0.016675	0.5969	0.025931	0.5989
3	3.0185	466.32977	PE(P-18:0/0:0)	3.347361	1.62E-06	3.3474	0.307410	0.8457	0.005106	0.7163	0.450433	0.9335
4	1.5517	478.29289	PE(18:2/0:0)	2.142614	0.022380	2.1426	0.767972	1.0863	0.029045	0.4881	0.024280	0.4366
5	8.7803	705.59059	SM(d18:0/16:0)	3.805205	1.21E-06	3.8052	0.245808	0.8385	0.000135	0.5423	0.000020	0.3671
6	8.3575	729.59056	SM(d18:1/18:1)	2.043793	5.34E-05	2.0438	0.163162	0.8610	0.603399	0.9569	0.416094	0.9196
7	8.1461	706.53886	PC(16:0/14:0)	3.403970	3.14E-06	0.2938	0.000664	0.5270	0.609048	1.0346	0.796824	1.4075
8	10.8241	734.57009	PC(16:0/16:0)	2.064071	2.48E-06	0.4845	0.011311	0.7546	0.394074	0.9302	0.746697	1.0889
9	8.7446	782.56980	PC(16:0/20:4)	3.218626	3.24E-05	0.3107	0.197687	0.6865	0.048580	1.3616	0.211812	1.5514
10	11.8139	836.61668	PC(18:0/22:5)	2.477047	0.000951	0.4037	0.144162	0.5809	0.018528	1.6424	0.074504	2.3522
11	1.3903	544.34034	PC(20:4/0:0)	4.333849	7.64E-05	0.2307	0.736446	0.8593	0.017967	1.8425	0.077411	3.1387
12	11.6239	810.60078	PC(20:4/18:0)	2.534677	0.000301	0.3945	0.327411	0.7201	0.007459	1.7659	0.128390	1.7546
13	9.0317	808.58519	PC(20:4/18:1)	2.578941	0.000242	0.3878	0.218952	0.6849	0.035153	1.4237	0.197382	1.6132
14	7.3106	806.56949	PC(20:4/18:2)	2.010264	0.001226	0.4974	0.153197	0.6732	0.153344	1.2372	0.917770	1.0087
15	10.8527	834.60065	PC(20:4/20:2)	3.423473	0.000324	0.2921	0.124597	0.5275	0.010437	1.8687	0.100724	2.6785
16	6.8407	830.56954	PC(20:4/20:4)	2.833827	8.79E-05	0.3529	0.031543	0.5630	0.052507	1.3728	0.225158	1.6431
17	9.2859	740.52268	PE(20:4/16:0)	1.919220	8.79E-05	0.5210	0.059134	0.7180	0.207394	1.1066	0.781551	1.1054

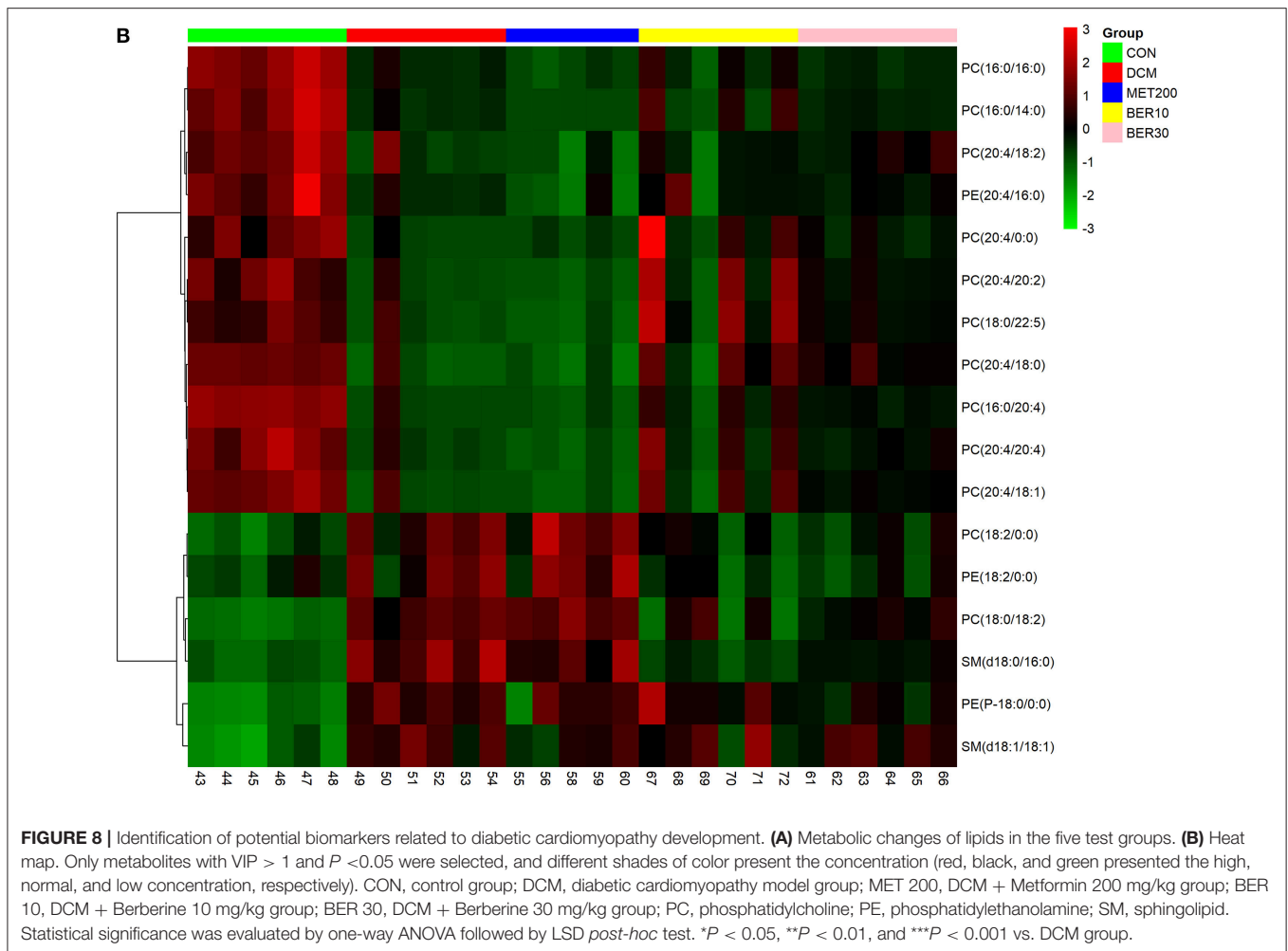
t<sub>R</sub>, retention time; VIP, variable important in the projection; FC, fold change; PC, phosphatidylcholine; PE, phosphatidylethanolamine; SM, sphingolipid; CON, control group; DCM, diabetic cardiomyopathy model group; MET 200, DCM + Metformin 200 mg/kg group; BER 10, DCM + Berberine 10 mg/kg group; BER 30, DCM + Berberine 30 mg/kg group.

(Quehenberger et al., 2010). Lots of evidences indicated the significance of impaired phospholipid-mediated signaling systems in DCM, heart failure and cardiac hypertrophy (Tabbi-Annani et al., 2003). Also, *in vitro* and *in vivo* studies have confirmed the association between dysregulated phospholipid metabolism and cardiac lipotoxicity in DCM (Lim et al., 2011).

A plasma lipidomic study in humans indicated a relationship of PC species with risk measures of metabolic diseases, and PC (32:1) and PC (38:3) were associated with a high risk of metabolic syndrome (Kulkarni et al., 2013). There were 45 glycerophospholipid and sphingolipid (SM) species observed reduced in the coronary artery disease (Sutter et al., 2016). A

population-based research indicated that serum PC (18:2/0:0) was associated with several cardiovascular disease-risk factors in adolescents (Syme et al., 2016). Serum lipid metabolites PC (18:0/18:2) and PC (16:0/14:0) were observed reduced from pre-diabetes to diabetes (Zeng et al., 2017). A clinical observation showed a persistent lipid signature with higher levels of plasma TGs, and diacylphospholipids as well as lower levels of alkylacyl phosphatidylcholines in progress to type 2 DM (Suvitaival et al., 2018). And plasma SM (d18:1/18:1) was significantly decreased in type 1 diabetic patients relative to controls (Sorensen et al., 2010). The myocardial phosphatidylinositol mass increased by 46%, and 1-stearoyl-2-arachidonoyl phosphatidylethanolamine decreased





by 22% in diabetic rats induced by STZ (Han et al., 2000). The *easily shocked (eas)* mutant heart in *Drosophila* exhibited defects in cardiac physiology, including reduction in diastolic and systolic diameters, as well as heartbeat length and the absolute volume output, and exhibited increased concentrations of TG, and low levels of PE, which suggested that lipid metabolism and cardiac function could be regulated by phospholipid homeostasis (Lim et al., 2011).

And it has been confirmed that the maintenance of the balance of the PC: PE ratio has important health potentials (Korematsu et al., 2017). Blood-based lipidomic studies in humans showed a strong association of reduced PC: PE ratio with obesity, type 2 DM and prediabetes (Meikle et al., 2013; Weir et al., 2013; Henstridge et al., 2015).

In terms of diabetic cardiomyopathy, the cardiomyopathic status such as cardiac hypertrophy, fibrosis, and cell death induced by both hyperglycemia and cardiac metabolic imbalance can lead to abnormal  $\text{Ca}^{2+}$  transients and contractile activity. The cellular ion homeostasis imbalance and changes of contractile proteins can impair the excitation-contraction coupling, and potential of autonomic responsiveness and autonomic neuropathy. Also, the structural abnormalities

occur (Tappia, 2007). The lipid metabolites, especially the main components of cardiomyocytes membrane such as phosphatidylcholine and phosphatidylethanolamine are closely related to intracellular ion homeostasis, which may contribute to the structural and functional alterations in the diabetic heart (Ussher et al., 2016; Meikle and Summers, 2017). Insulin treatment of diabetic rats could restore the species profile of phosphatidylethanolamines and overcorrect the changes in molecular species of phosphatidylcholines (Vecchini et al., 2000), which suggested that the abnormal in molecular species of glycerophospholipids may play an important role in membrane dysfunction and defective contractility of the diabetic heart (Vecchini et al., 2000; Tappia, 2007).

## CONCLUSIONS

Our results indicated a close relationship between PCs, PEs, and SMs and cardiac damage mechanisms during development of DCM. And the therapeutic effects of berberine on DCM are partly due to interferences with PC, PE, and SM metabolisms.

## AVAILABILITY OF DATA AND SUPPORTING MATERIALS

The datasets used and analyzed during the current study available from the corresponding author or the first author on reasonable request.

## AUTHOR CONTRIBUTIONS

JS and SD designed experiments. RZ, SZ, LC, ZC, and SD performed experiments. FS and RZ performed UPLCQ-TOF/MS

analysis. LT and SD conducted statistical analysis. SD wrote this paper. And all authors read and approved the final manuscript.

## FUNDING

This paper was supported by the National Natural Science Foundation of China (Grant No. 81503287, 81430094), Natural Science Foundation of Beijing Municipality (Grant No. 7174312, 7144222), and Doctoral Program Foundation of Institutions of Higher Education of China (Grant No. 20130013 120002).

## REFERENCES

- Bai, X. J., Hao, J. T., Wang, J., Zhang, W. F., Yan, C. P., Zhao, J. H., et al. (2018). Curcumin inhibits cardiac hypertrophy and improves cardiovascular function via enhanced  $\text{Na}^+/\text{Ca}^{2+}$  exchanger expression after transverse abdominal aortic constriction in rats. *Pharmacol. Rep.* 70, 60–68. doi: 10.1016/j.pharep.2017.07.014
- Bakshi, M. V., Azimzadeh, O., Barjaktarovic, Z., Kempf, S. J., Merl-Pham, J., Hauck, S. M., et al. (2015). Total body exposure to low-dose ionizing radiation induces long-term alterations to the liver proteome of neonatally exposed mice. *J. Proteome Res.* 14, 366–373. doi: 10.1021/pr500890n
- Bishop, W. R., and Bell, R. M. (1988). Assembly of phospholipids into cellular membranes: biosynthesis, transmembrane movement and intracellular translocation. *Annu. Rev. Cell Biol.* 4, 579–610. doi: 10.1146/annurev.cb.04.110188.003051
- Boles, A., Kandimala, R., and Reddy, P. H. (2017). Dynamics of diabetes and obesity: epidemiological perspective. *Biochim. Biophys. Acta* 1863, 1026–1036. doi: 10.1016/j.bbadis.2017.01.016
- Chan, J. C., Zhang, Y., and Ning, G. (2014). Diabetes in China: a societal solution for a personal challenge. *Lancet Diabetes Endocrinol.* 2, 969–979. doi: 10.1016/S2213-8587(14)70144-5
- Chang, X., Wang, Z., Zhang, J., Yan, H., Bian, H., Xia, M., et al. (2016). Lipid profiling of the therapeutic effects of berberine in patients with nonalcoholic fatty liver disease. *J. Transl. Med.* 14:266. doi: 10.1186/s12967-016-0982-x
- Cicero, A. F., and Baggioni, A. (2016). Berberine and its role in chronic disease. *Adv. Exp. Med. Biol.* 928, 27–45. doi: 10.1007/978-3-319-41334-1\_2
- Dong, S. F., Hong, Y., Liu, M., Hao, Y. Z., Yu, H. S., Liu, Y., et al. (2011). Berberine attenuates cardiac dysfunction in hyperglycemic and hypercholesterolemic rats. *Eur. J. Pharmacol.* 660, 368–374. doi: 10.1016/j.ejphar.2011.03.024
- Dong, S., Zhang, R., Liang, Y., Shi, J., Li, J., Shang, F., et al. (2017). Changes of myocardial lipidomics profiling in a rat model of diabetic cardiomyopathy using UPLC/Q-TOF/MS analysis. *Diabetol. Metab. Syndr.* 9:56. doi: 10.1186/s13098-017-0249-6
- Dunn, W. B., Broadhurst, D., Begley, P., Zelena, E., Francis-Mcintyre, S., Anderson, N., et al. (2011). Procedures for large-scale metabolic profiling of serum and plasma using gas chromatography and liquid chromatography coupled to mass spectrometry. *Nat. Protoc.* 6, 1060–1083. doi: 10.1038/nprot.2011.335
- Han, X., Abendschein, D. R., Kelley, J. G., and Gross, R. W. (2000). Diabetes-induced changes in specific lipid molecular species in rat myocardium. *Biochem. J.* 352(Pt 1), 79–89. doi: 10.1042/bj3520079
- Henstridge, D. C., Estevez, E., Allen, T. L., Heywood, S. E., Gardner, T., Yang, C., et al. (2015). Genetic manipulation of cardiac Hsp72 levels does not alter substrate metabolism but reveals insights into high-fat feeding-induced cardiac insulin resistance. *Cell Stress Chaperones* 20, 461–472. doi: 10.1007/s12192-015-0571-6
- Hu, T., and Zhang, J. L. (2018). Mass-spectrometry-based lipidomics. *J. Sep. Sci.* 41, 351–372. doi: 10.1002/jssc.201700709
- Huang, D., Refaat, M., Mohammadi, K., Jayyousi, A., Al Suwaidi, J., and Abi Khalil, C. (2017). Macrovascular complications in patients with diabetes and prediabetes. *Biomed. Res. Int.* 2017:7839101. doi: 10.1155/2017/7839101
- Huynh, K., Bernardo, B. C., McMullen, J. R., and Ritchie, R. H. (2014). Diabetic cardiomyopathy: mechanisms and new treatment strategies targeting antioxidant signaling pathways. *Pharmacol. Ther.* 142, 375–415. doi: 10.1016/j.pharmthera.2014.01.003
- Ingelfinger, J. R., and Jarcho, J. A. (2017). Increase in the incidence of diabetes and its implications. *N. Engl. J. Med.* 376, 1473–1474. doi: 10.1056/NEJMe1616575
- Jia, G., Hill, M. A., and Sowers, J. R. (2018). Diabetic cardiomyopathy: an update of mechanisms contributing to this clinical entity. *Circ. Res.* 122, 624–638. doi: 10.1161/CIRCRESAHA.117.311586
- Jiang, D., Wang, D., Zhuang, X., Wang, Z., Ni, Y., Chen, S., et al. (2016). Berberine increases adipose triglyceride lipase in 3T3-L1 adipocytes through the AMPK pathway. *Lipids Health Dis.* 15:214. doi: 10.1186/s12944-016-0383-4
- Kong, W., Wei, J., Abidi, P., Lin, M., Inaba, S., Li, C., et al. (2004). Berberine is a novel cholesterol-lowering drug working through a unique mechanism distinct from statins. *Nat. Med.* 10, 1344–1351. doi: 10.1038/nm1135
- Korematsu, S., Yamada, H., Miyahara, H., and Ihara, K. (2017). Increased levels of anti-phosphatidylcholine and anti-phosphatidylethanolamine antibodies in pediatric patients with cerebral infarction. *Brain Dev.* 39, 542–546. doi: 10.1016/j.braindev.2017.01.010
- Kulkarni, H., Meikle, P. J., Mamtani, M., Weir, J. M., Barlow, C. K., Jowett, J. B., et al. (2013). Variability in associations of phosphatidylcholine molecular species with metabolic syndrome in Mexican-American families. *Lipids* 48, 497–503. doi: 10.1007/s11745-013-3781-7
- Laaksonen, R., Katajamaa, M., Paiva, H., Sysi-Aho, M., Saarinen, L., Junni, P., et al. (2006). A systems biology strategy reveals biological pathways and plasma biomarker candidates for potentially toxic statin-induced changes in muscle. *PLoS ONE* 1:e97. doi: 10.1371/journal.pone.0000097
- Lamari, F., Mochel, F., Sedel, F., and Saudubray, J. M. (2013). Disorders of phospholipids, sphingolipids and fatty acids biosynthesis: toward a new category of inherited metabolic diseases. *J. Inher. Metab. Dis.* 36, 411–425. doi: 10.1007/s10545-012-9509-7
- Li, X. X., Li, C. B., Xiao, J., Gao, H. Q., Wang, H. W., Zhang, X. Y., et al. (2015). Berberine attenuates vascular remodeling and inflammation in a rat model of metabolic syndrome. *Biol. Pharm. Bull.* 38, 862–868. doi: 10.1248/bpb.b14-00828
- Lim, H. Y., Wang, W., Wessells, R. J., Ocorr, K., and Bodmer, R. (2011). Phospholipid homeostasis regulates lipid metabolism and cardiac function through SREBP signaling in *Drosophila*. *Genes Dev.* 25, 189–200. doi: 10.1101/gad.1992411
- Loffroy, R., Bernard, S., Serusclat, A., Bousset, L., Bonnefoy, E., D'athis, P., et al. (2009). Noninvasive assessment of the prevalence and characteristics of coronary atherosclerotic plaques by multidetector computed tomography in asymptomatic type 2 diabetic patients at high risk of significant coronary artery disease: a preliminary study. *Arch. Cardiovasc. Dis.* 102, 607–615. doi: 10.1016/j.acvd.2009.04.007
- Ma, R. C. W., Tsoi, K. Y., Tam, W. H., and Wong, C. K. C. (2017). Developmental origins of type 2 diabetes: a perspective from China. *Eur. J. Clin. Nutr.* 71, 870–880. doi: 10.1038/ejcn.2017.48
- Meikle, P. J., and Summers, S. A. (2017). Sphingolipids and phospholipids in insulin resistance and related metabolic disorders. *Nat. Rev. Endocrinol.* 13, 79–91. doi: 10.1038/nrendo.2016.169

- Meikle, P. J., Wong, G., Barlow, C. K., and Kingwell, B. A. (2014). Lipidomics: potential role in risk prediction and therapeutic monitoring for diabetes and cardiovascular disease. *Pharmacol. Ther.* 143, 12–23. doi: 10.1016/j.pharmthera.2014.02.001
- Meikle, P. J., Wong, G., Barlow, C. K., Weir, J. M., Greeve, M. A., Macintosh, G. L., et al. (2013). Plasma lipid profiling shows similar associations with prediabetes and type 2 diabetes. *PLoS ONE* 8:e74341. doi: 10.1371/journal.pone.0074341
- Morrison, K., Witte, K., Mayers, J. R., Schuh, A. L., and Audhya, A. (2012). Roles of acidic phospholipids and nucleotides in regulating membrane binding and activity of a calcium-independent phospholipase A2 isoform. *J. Biol. Chem.* 287, 38824–38834. doi: 10.1074/jbc.M112.391508
- Nam, M., Jung, Y., Ryu, D. H., and Hwang, G. S. (2017). A metabolomics-driven approach reveals metabolic responses and mechanisms in the rat heart following myocardial infarction. *Int. J. Cardiol.* 227, 239–246. doi: 10.1016/j.ijcard.2016.11.127
- Nygren, H., Seppanen-Laakso, T., Castillo, S., Hyotylainen, T., and Oresic, M. (2011). Liquid chromatography-mass spectrometry (LC-MS)-based lipidomics for studies of body fluids and tissues. *Methods Mol. Biol.* 708, 247–257. doi: 10.1007/978-1-61737-985-7\_15
- Palomer, X., Salvado, L., Barroso, E., and Vazquez-Carrera, M. (2013). An overview of the crosstalk between inflammatory processes and metabolic dysregulation during diabetic cardiomyopathy. *Int. J. Cardiol.* 168, 3160–3172. doi: 10.1016/j.ijcard.2013.07.150
- Qian, Y., Peng, Y., Shang, E., Zhao, M., Yan, L., Zhu, Z., et al. (2017). Metabolic profiling of the hepatotoxicity and nephrotoxicity of Ginkgolic acids in rats using ultra-performance liquid chromatography-high-definition mass spectrometry. *Chem. Biol. Interact.* 273, 11–17. doi: 10.1016/j.cbi.2017.05.020
- Quehenberger, O., Armando, A. M., Brown, A. H., Milne, S. B., Myers, D. S., Merrill, A. H., et al. (2010). Lipidomics reveals a remarkable diversity of lipids in human plasma. *J. Lipid Res.* 51, 3299–3305. doi: 10.1194/jlr.M009449
- Reis, F., Rocha, L., Ponte, L., Alcobia, T., Almeida, L., Costa-Almeida, C., et al. (2005). Effect of preventive and regressive isosorbide 5-mononitrate treatment on catecholamine levels in plasma, platelets, adrenals, left ventricle and aorta in captopril a-induced hypertensive rats. *Life Sci.* 77, 2514–2528. doi: 10.1016/j.lfs.2005.01.032
- Ruiz, M., Coderre, L., Allen, B. G., and Des Rosiers, C. (2018). Protecting the heart through MK2 modulation, toward a role in diabetic cardiomyopathy and lipid metabolism. *Biochim. Biophys. Acta* 1864, 1914–1922. doi: 10.1016/j.bbdis.2017.07.015
- Saigusa, D., Okamura, Y., Motoike, I. N., Katoh, Y., Kurosawa, Y., Saijyo, R., et al. (2016). Establishment of protocols for global metabolomics by LC-MS for biomarker discovery. *PLOS ONE* 11:e0160555. doi: 10.1371/journal.pone.0160555
- Saigusa, D., Suzuki, N., Matsumoto, Y., Umeda, K., Tomioka, Y., Koshiba, S., et al. (2018). Detection of novel metabolite for Roxadustat doping by global metabolomics. *J. Biochem.* 163:e1. doi: 10.1093/jb/mvy036
- Sorensen, C. M., Ding, J., Zhang, Q., Alquier, T., Zhao, R., Mueller, P. W., et al. (2010). Perturbations in the lipid profile of individuals with newly diagnosed type 1 diabetes mellitus: lipidomics analysis of a Diabetes antibody standardization program sample subset. *Clin. Biochem.* 43, 948–956. doi: 10.1016/j.clinbiochem.2010.04.075
- Sun, Y., Yuan, X., Zhang, F., Han, Y., Chang, X., Xu, X., et al. (2017). Berberine ameliorates fatty acid-induced oxidative stress in human hepatoma cells. *Sci. Rep.* 7:11340. doi: 10.1038/s41598-017-11860-3
- Sutter, I., Klingenberg, R., Othman, A., Rohrer, L., Landmesser, U., Heg, D., et al. (2016). Decreased phosphatidylcholine plasmalogens—a putative novel lipid signature in patients with stable coronary artery disease and acute myocardial infarction. *Atherosclerosis* 246, 130–140. doi: 10.1016/j.atherosclerosis.2016.01.003
- Suvitaival, T., Bondia-Pons, I., Yetukuri, L., Poho, P., Nolan, J. J., Hyotylainen, T., et al. (2018). Lipidome as a predictive tool in progression to type 2 diabetes in Finnish men. *Metabolism* 78, 1–12. doi: 10.1016/j.metabol.2017.08.014
- Syme, C., Czajkowski, S., Shin, J., Abrahamowicz, M., Leonard, G., Perron, M., et al. (2016). Glycerophosphocholine metabolites and cardiovascular disease risk factors in adolescents: a cohort study. *Circulation* 134, 1629–1636. doi: 10.1161/CIRCULATIONAHA.116.022993
- Tabbi-Anneni, I., Helies-Toussaint, C., Morin, D., Bescond-Jacquet, A., Lucien, A., and Grynberg, A. (2003). Prevention of heart failure in rats by trimetazidine treatment: a consequence of accelerated phospholipid turnover? *J. Pharmacol. Exp. Ther.* 304, 1003–1009. doi: 10.1124/jpet.102.042143
- Tappia, P. S. (2007). Phospholipid-mediated signaling systems as novel targets for treatment of heart disease. *Can. J. Physiol. Pharmacol.* 85, 25–41. doi: 10.1139/y06-098
- Trachanas, K., Sideris, S., Aggeli, C., Poulidakis, E., Gatzoulis, K., Tousoulis, D., et al. (2014). Diabetic cardiomyopathy: from pathophysiology to treatment. *Hellenic J. Cardiol.* 55, 411–421.
- Ussher, J. R., Elmariah, S., Gerszten, R. E., and Dyck, J. R. (2016). The emerging role of metabolomics in the diagnosis and prognosis of cardiovascular disease. *J. Am. Coll. Cardiol.* 68, 2850–2870. doi: 10.1016/j.jacc.2016.09.972
- Vecchini, A., Del Rosso, F., Binaglia, L., Dhalla, N. S., and Panagia, V. (2000). Molecular defects in sarcolemmal glycerophospholipid subclasses in diabetic cardiomyopathy. *J. Mol. Cell. Cardiol.* 32, 1061–1074. doi: 10.1006/jmcc.2000.1140
- Wang, H., Zhu, C., Ying, Y., Luo, L., Huang, D., and Luo, Z. (2018). Metformin and berberine, two versatile drugs in treatment of common metabolic diseases. *Oncotarget* 9, 10135–10146. doi: 10.18632/oncotarget.20807
- Want, E. J., Masson, P., Michopoulos, F., Wilson, I. D., Theodoridis, G., Plumb, R. S., et al. (2013). Global metabolic profiling of animal and human tissues via UPLC-MS. *Nat. Protoc.* 8, 17–32. doi: 10.1038/nprot.2012.135
- Weir, J. M., Wong, G., Barlow, C. K., Greeve, M. A., Kowalczyk, A., Almasy, L., et al. (2013). Plasma lipid profiling in a large population-based cohort. *J. Lipid Res.* 54, 2898–2908. doi: 10.1194/jlr.P035808
- Wong, G., Barlow, C. K., Weir, J. M., Jowett, J. B., Magliano, D. J., Zimmet, P., et al. (2013). Inclusion of plasma lipid species improves classification of individuals at risk of type 2 diabetes. *PLoS ONE* 8:e76577. doi: 10.1371/journal.pone.0076577
- Xu, J., Tang, L. Y., Zhang, Q., Wei, J. Y., Xian, M. H., Zhao, Y., et al. (2017). Relative quantification of neuronal polar lipids by UPLC-MS reveals the brain protection mechanism of Danhong injection. *Rsc Adv.* 7, 45746–45756. doi: 10.1039/C7RA09245H
- Xu, Y., Wang, L., He, J., Bi, Y., Li, M., Wang, T., et al. (2013). Prevalence and control of diabetes in Chinese adults. *JAMA* 310, 948–959. doi: 10.1001/jama.2013.168118
- Yetukuri, L., Huopaniemi, I., Koivuniemi, A., Maranghi, M., Hiukka, A., Nygren, H., et al. (2011). High density lipoprotein structural changes and drug response in lipidomic profiles following the long-term fenofibrate therapy in the FIELD substudy. *PLoS ONE* 6:e23589. doi: 10.1371/journal.pone.0023589
- Zeng, H., Tong, R., Tong, W., Yang, Q., Qiu, M., Xiong, A., et al. (2017). Metabolic biomarkers for prognostic prediction of pre-diabetes: results from a longitudinal cohort study. *Sci. Rep.* 7:6575. doi: 10.1038/s41598-017-06309-6
- Zhang, Y., Zou, W., Cui, F., Wang, N., Zhang, D., Cui, Y., et al. (2014). Protective effect of phosphatidylcholine on restoration of ethanol-injured hepatocytes related with caveolin-1. *J. Membr. Biol.* 247, 73–80. doi: 10.1007/s00232-013-9613-0
- Zhao, Y. Y., Miao, H., Cheng, X. L., and Wei, F. (2015). Lipidomics: novel insight into the biochemical mechanism of lipid metabolism and dysregulation-associated disease. *Chem. Biol. Interact.* 240, 220–238. doi: 10.1016/j.cbi.2015.09.005

**Conflict of Interest Statement:** The authors declare that the research was conducted in the absence of any commercial or financial relationships that could be construed as a potential conflict of interest.

Copyright © 2018 Dong, Zhang, Chen, Zhang, Tian, Cheng, Shang and Sun. This is an open-access article distributed under the terms of the Creative Commons Attribution License (CC BY). The use, distribution or reproduction in other forums is permitted, provided the original author(s) and the copyright owner(s) are credited and that the original publication in this journal is cited, in accordance with accepted academic practice. No use, distribution or reproduction is permitted which does not comply with these terms.