



Integrated Modules Analysis to Explore the Molecular Mechanisms of Phlegm-Stasis Cementation Syndrome with Ischemic Heart Disease

Wei-Ming Xu¹, Kuo Yang², Li-Jie Jiang¹, Jing-Qing Hu^{1*} and Xue-Zhong Zhou^{2,3*}

¹ Research Centre for Disease and Syndrome, Institute of Basic Theory for Traditional Chinese Medicine, China Academy of Chinese Medicine Sciences, Beijing, China, ² School of Computer and Information Technology and Beijing Key Lab of Traffic Data Analysis and Mining, Beijing Jiaotong University, Beijing, China, ³ Data Center of Traditional Chinese Medicine, China Academy of Chinese Medical Sciences, Beijing, China

OPEN ACCESS

Edited by:

Jing-Yan Han,
Peking University, China

Reviewed by:

Suowen Xu,
University of Rochester, United States
Yong Wang,
Beijing University of Chinese Medicine,
China

*Correspondence:

Jing-Qing Hu
gcp306@126.com
Xue-Zhong Zhou
xzzhou@bjtu.edu.cn

Specialty section:

This article was submitted to
Vascular Physiology,
a section of the journal
Frontiers in Physiology

Received: 25 October 2017

Accepted: 04 January 2018

Published: 22 January 2018

Citation:

Xu W-M, Yang K, Jiang L-J, Hu J-Q
and Zhou X-Z (2018) Integrated
Modules Analysis to Explore the
Molecular Mechanisms of
Phlegm-Stasis Cementation
Syndrome with Ischemic Heart
Disease. *Front. Physiol.* 9:7.
doi: 10.3389/fphys.2018.00007

Background: Ischemic heart disease (IHD) has been the leading cause of death for several decades globally, IHD patients usually hold the symptoms of phlegm-stasis cementation syndrome (PSCS) as significant complications. However, the underlying molecular mechanisms of PSCS complicated with IHD have not yet been fully elucidated.

Materials and Methods: Network medicine methods were utilized to elucidate the underlying molecular mechanisms of IHD phenotypes. Firstly, high-quality IHD-associated genes from both human curated disease-gene association database and biomedical literatures were integrated. Secondly, the IHD disease modules were obtained by dissecting the protein-protein interaction (PPI) topological modules in the String V9.1 database and the mapping of IHD-associated genes to the PPI topological modules. After that, molecular functional analyses (e.g., Gene Ontology and pathway enrichment analyses) for these IHD disease modules were conducted. Finally, the PSCS syndrome modules were identified by mapping the PSCS related symptom-genes to the IHD disease modules, which were further validated by both pharmacological and physiological evidences derived from published literatures.

Results: The total of 1,056 high-quality IHD-associated genes were integrated and evaluated. In addition, eight IHD disease modules (the PPI sub-networks significantly relevant to IHD) were identified, in which two disease modules were relevant to PSCS syndrome (i.e., two PSCS syndrome modules). These two modules had enriched pathways on Toll-like receptor signaling pathway (hsa04620) and Renin-angiotensin system (hsa04614), with the molecular functions of angiotensin maturation (GO:0002003) and response to bacterium (GO:0009617), which had been validated by classical Chinese herbal formulas-related targets, IHD-related drug targets, and the phenotype features derived from human phenotype ontology (HPO) and published biomedical literatures.

Conclusion: A network medicine-based approach was proposed to identify the underlying molecular modules of PSCS complicated with IHD, which could be used for interpreting the pharmacological mechanisms of well-established Chinese herbal

formulas (e.g., *Tao Hong Si Wu Tang*, *Dan Shen Yin*, *Hunag Lian Wen Dan Tang* and *Gua Lou Xie Bai Ban Xia Tang*). In addition, these results delivered novel understandings of the molecular network mechanisms of IHD phenotype subtypes with PSCS complications, which would be both insightful for IHD precision medicine and the integration of disease and TCM syndrome diagnoses.

Keywords: ischemic heart disease, phlegm-stasis cementation syndrome, network medicine, disease module, systems biology

BACKGROUND

Ischemic heart disease (IHD), caused by the atherosclerosis of coronary vessels, is also called coronary atherosclerosis heart disease. IHD has remained the leading cause of death during the past several decades, according to a 2017 WHO report (World Health Organization, 2017). In recent years, many progresses have been made in identifying the underlying mechanisms of IHD in terms of genetic architecture (Tikkanen and Helio, 1994; Samani, 1998; Ma and Liew, 2003; Wang, 2005; Liu H. et al., 2011; Wang et al., 2011; Hua et al., 2014; Roberts, 2014; Ozaki and Tanaka, 2016). For example, the CADgene database, a comprehensive database for Coronary Heart Disease (CAD) associated genes, have been curated by collecting relevant literatures from PubMed (Liu H. et al., 2011). However, as a complex disease, IHD incorporates several disease subtypes, including ariant/unstable angina pectoris, myocardial infarction, acute coronary syndrome and cardiac sudden death (Chinese Minister of Health, 2010). These subtypes represent different stages of disease development, and additional genetic profiles (e.g., genetic interaction network) should be investigated to better understand the molecular mechanisms of IHD.

Syndrome (also called **Zheng**) is the basic diagnostic unit and a key concept in Traditional Chinese Medicine (TCM) (Gu, 1956). Syndromes could be regarded as phenotype subtypes of diseases to a certain degree. According to TCM theory, a syndrome is a combination of clinical manifestations that commonly occur together, thus implying the existence of a particular disease condition (Wang and Xu, 2014; Zhao Y. F. et al., 2014). One syndrome always consists of a characteristic profile of all clinical manifestations, including signs, symptoms, tongue appearances, and pulse feelings (briefly called symptoms in the following text), in a patient these are identifiable to TCM practitioners. Phlegm syndrome (abbreviated as PS) and

blood-stasis syndrome (abbreviated as BS) are both among the most common syndromes in IHD patients in China (Mao et al., 2011; Ren et al., 2012; Li et al., 2014). For example, a comprehensive retrieval of CAD syndromes published in the China National Knowledge Infrastructure (CNKI) database and VIP Information Network databases from 1970 to 2010 indicated that the main syndromes were primarily associated with BS and PS, and the incidence of both had increased in recent years (Mao et al., 2011). Another clinical epidemiological investigation on current syndrome characteristics of 8,129 IHD patients indicated that BS appeared in 77.89% of IHD patients and PS appeared in 43.97% of IHD patients (Bi et al., 2017). Phlegm-stasis cementation syndrome (abbreviated as PSCS), which represents both PS and BS in IHD patients, occurred in 24.33~26.22% of IHD patients and was significant complication with IHD (Bi et al., 2013, 2017).

Following syndrome differentiation, TCM physicians usually utilize herb prescriptions for disease treatments. Several classical formulas have been used for thousands of years to treat BS and PS complicated with IHD. For example, *Huang Lian Wen Dan Decoction*, a formula to treat PS with IHD in TCM clinical practice, can ameliorate the clinical symptoms of stable angina pectoris, reduce the incidence of angina and delay the progression of atherosclerosis (Gong, 2012; Yan et al., 2015). *Gua Lou Xie Bai Ban Xia Decoction*, a classical formula created by the medical sage Zhang Zhong-jing over 2000 years ago, exerts a protective effect on the ischemic rabbit myocardium, and the underlying mechanisms may involve the inhibition of nitric oxide synthase (NOS) activity and are ductin in the excessive production of nitric oxide (NO) (Zhou et al., 2010; Zhang et al., 2011). *Dan Shen Yin Decoction* and *Tao Hong Si Wu Decoction* are both well-known decoctions used to treat BS with IHD (Yan et al., 2012; Yin et al., 2013; Liu et al., 2015).

Network medicine (Barabasi et al., 2011), particularly that involving disease modules, is a promising approach to investigate the network mechanisms of complex diseases (Goh et al., 2007; Menche et al., 2015), particularly for disease subtypes (Wang et al., 2017), disease phenotypes and disease-disease associations (Barabasi et al., 2011; Chen and Butte, 2013; Wang et al., 2017). Transcriptomics, metabolomics, proteomics, and other omics technologies have the potential to provide new insights into complex disease pathogenesis and heterogeneity, especially if they are applied within a network biology framework (Silverman and Loscalzo, 2012). Recent studies have tried to investigate the association of one symptom with one syndrome [such as quantitative facial color features with cold pattern (Mun et al., 2017)] or understanding the syndrome from the

Abbreviations: IHD, Ischemic heart disease; CAD, Coronary heart disease; TCM, Traditional Chinese Medicine; PS, Phlegm syndrome; BS, blood-stasis syndrome; PSCS, Phlegm-stasis cementation syndrome; NOS, nitric oxide synthase; NO, Nitric oxide; OMIM, Online Mendelian Inheritance in Man; GWAS, Genome-wide association study; HIT, Herb Ingredients' Targets; HPO, Human Phenotype Ontology; TTD, Therapeutic Target Database; ICD, International Classification of Diseases; GO, gene ontology; PPI, Protein-protein interaction; HPO, Human Phenotype Ontology; HSDN, Human Symptoms-Disease Network; KEGG, Kyoto Encyclopedia of Genes and Genomes; CPV, Corrected p-values; MMP9, Matrix metallo peptidase 9; ACE, Angiotensin-converting enzyme; PLAU, Plasminogen activator, urokinase; IL-6, Interleukin 6; IL-8, Interleukin-8; ICAM-1, Intercellular adhesion molecule 1; TNF- α , Tumor necrosis factor- α ; CRP, C-reactive protein; MAPK, Mitogen-activated protein kinase; NCBI, National Center for Biotechnology Information.

view of genotypes-phenotypes interactions (Chung, 2014; Fraser et al., 2015). And the main strategies include: (1) conducting the metabonomic and proteomic research (Shi et al., 2014b; Zou et al., 2014; Jiang et al., 2015; Sun et al., 2015); (2) constructing MiRNA-target network (Liao et al., 2016; Liu et al., 2017); (3) integrating the classical formulas or herb pair (Chen et al., 2016; Xu et al., 2016; Zhou et al., 2016; Yue et al., 2017); (4) analyzing compound-nature pairs from TCM via chemical space visualizations (Liang et al., 2013; Fu et al., 2017); (5) using compound-target-disease associations to reconstruct the biologically-meaningful networks based on systems pharmacology (Zhou and Wang, 2014). Moreover, in recent years, a growing number of studies have focused on the biological mechanisms underlying BS with IHD (Mao et al., 2004; Liu Y. et al., 2011; Chen, 2012; Hao et al., 2013; Huang et al., 2013; Su et al., 2013; Wang and Yu, 2013; Li et al., 2015), PS with IHD (Wang et al., 2009; Zhao, 2009; Fang et al., 2011; Kong et al., 2014) and PSCS with IHD (Zhang et al., 1995, 1999; Liu et al., 2008; Bai and Song, 2012; Lin et al., 2014; Zhao L. et al., 2014; Ren et al., 2015). However, the molecular mechanisms of PSCS with IHD have not been fully elucidated clearly and have not yet been investigated from a network medicine perspective (Hopkins, 2007; Li and Zhang, 2013), in particular the symptoms or cluster of symptoms (corresponding to specific syndromes) have been always ignored to be explored in system biology (Zhou et al., 2014a,b), although symptoms were the most common and focused phenotypes in TCM (Chung, 2014).

In this study, we proposed a network medicine-based approach to identify the underlying molecular modules of PSCS complicated with IHD. We firstly identified protein-protein interaction (PPI) topical modules that were closely related to PSCS with IHD and explored the molecular mechanisms of PSCS with IHD via integrated modules analysis. PSCS with IHD associated syndrome modules were detected by integrating symptom-gene relationships based on the identification of IHD disease modules. Under the theoretical guideline of correspondence between prescription and syndrome (Gao et al., 2012; Lu et al., 2014), *Dan Shen Yin Decoction* and *Tao Hong Si Wu Decoction* were both classical formulas to treat BS with IHD not for PS with IHD, *Gua Lou Xie Bai Ban Xia Decoction* and *Huang Lian Wen Dan Decoction* were both classical formulas to treat PS with IHD not for BS with IHD. When Chinese Medicine treated the PSCS, treatments for PS and BS with IHD should be used synchronously. Targets of the four classical formulas and known IHD-related targets were used to validate the reliability of the syndrome modules because network pharmacology had become an important approach in TCM to understand the underlying mechanisms of syndromes (Li and Zhang, 2013; Li et al., 2013; Pei et al., 2013; Zhang et al., 2013, 2017; Yue et al., 2017). The Human Phenotype Ontology (HPO) and published literatures were also examined to gather supplementary evidences. Ultimately, we identified two modules that were closely associated with PSCS with IHD and explored their molecular network mechanisms by performing molecular functional analyses. The main steps in our work were as shown in **Figure 1**.

MATERIALS AND METHODS

Curation of IHD-Associated Genes

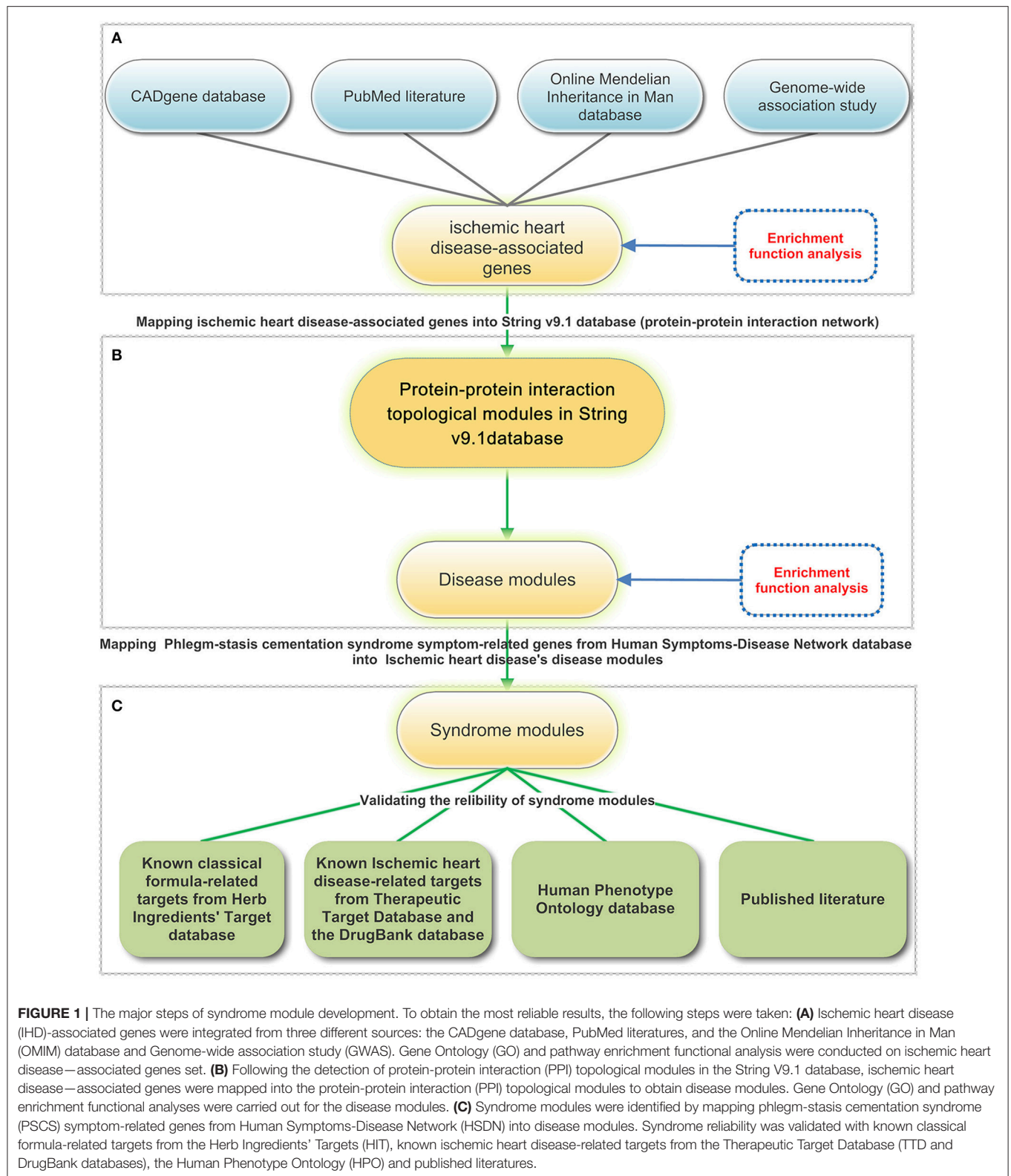
We included all subtypes of IHD as MeSH terms and integrated three different data sources: the CADgene database (Liu H. et al., 2011), PubMed and Disease-Connect [including Online Mendelian Inheritance in Man database (OMIM) and Genome-wide association study (GWAS)] (Liu et al., 2014). We incorporated all genes from the CADgene database as IHD-associated genes. For PubMed literatures, we adopted systematic steps to manually curate disease-gene associations from published records. First, we manually selected MeSH terms related to IHD subtypes from the MeSH terminology (<https://www.nlm.nih.gov/mesh/2014>). Then, we manually searched the PubMed database using each MeSH term to obtain records related to IHD and its human genes. Next, we filtered the records by querying the PubMed database using the full names or symbols of genes from the National Center for Biotechnology Information (NCBI) gene database. Finally, we identified IHD MeSH terms and their associated genes in terms of their co-occurrence in PubMed records. Because CADgene and PubMed records may contain repetitive associations, we calculated the overlap between the CADgene and PubMed records. After excluding these records, we manually checked the remaining associations between genes and disease subtypes. One association might have multiple related biographical records, and we considered the association to be true if at least one record indicated the relationship between the query gene and a disease subtype existed. Another data source for disease-gene associations was the Disease-Connect database (Liu et al., 2014) (Accessed on Feb 5, 2015), from which we extracted the OMIM and GWAS subset.

Identification of Disease Modules

Community structures were widely distributed within complex networks. Each community comprised nodes that densely connected its members and were sparsely connected with the nodes in other modules (Dittrich et al., 2008). Firstly, we obtained a reliable PPI network that included 15,524 nodes (proteins) and 218,409 edges (protein-protein associations) by filtering high-quality protein-protein associations (weight of edges > 700) from the String V9.1 database (Szklarczyk et al., 2011; Franceschini et al., 2013). Then, we applied a widely used algorithm called BGLL (Subelj and Bajec, 2011) to obtain PPI topological modules. The PPI network was partitioned into 314 modules. Modules containing at least one IHD-associated gene were regarded as potential disease modules. By calculating p -values (hypergeometric distribution) between IHD-associated genes and potential disease modules, all enriched modules (p -value < 0.01) were considered disease modules.

Identification of Syndrome Modules

By mapping PSCS symptom-related genes into potential disease modules and calculating p -values (hypergeometric distribution) between PSCS-associated genes and potential disease modules, all enriched modules (p -value < 0.01) that simultaneously overlapped with disease modules were deemed syndrome



modules. PSCS symptom-gene relationships were obtained from the Human Symptoms-Disease Network (HSDN) in our previous study (Zhou et al., 2014b). All symptoms consistent with

PSCS with IHD were derived from the diagnostic criteria for PSCS with IHD in our previous study (Hu et al., 2016). We combined the diagnostic criteria for BS with IHD (Fu

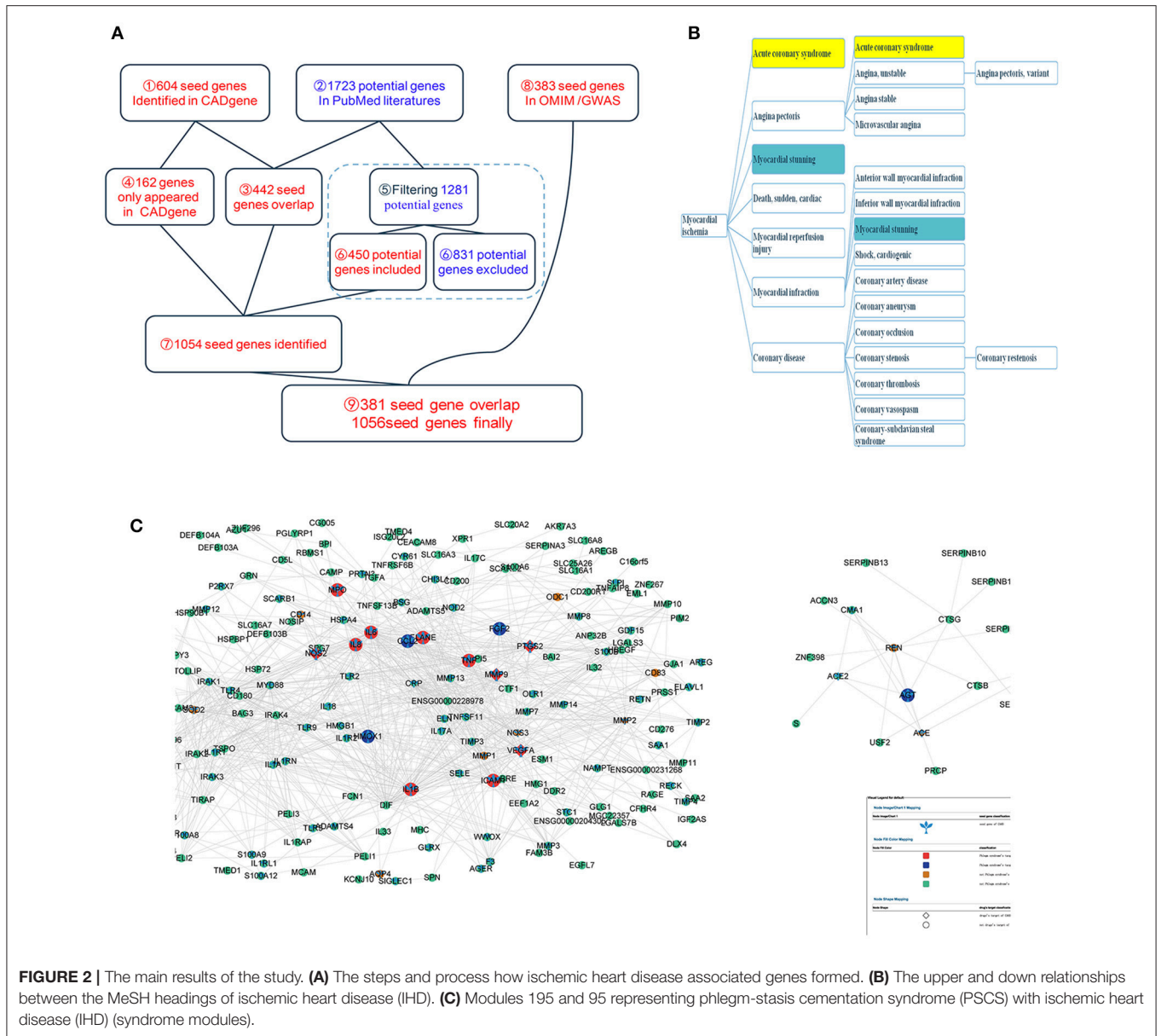


FIGURE 2 | The main results of the study. **(A)** The steps and process how ischemic heart disease associated genes formed. **(B)** The upper and down relationships between the MeSH headings of ischemic heart disease (IHD). **(C)** Modules 195 and 95 representing phlegm-stasis cementation syndrome (PSCS) with ischemic heart disease (IHD) (syndrome modules).

et al., 2012) and PS with IHD (Hu et al., 2016) (China Association of Traditional Chinese Medicine, 2017) to establish the diagnostic criteria for PSCS with IHD. In the diagnostic criteria for PSCS with IHD, PSCS with IHD involved 25 symptoms in total: chest tightness/chest heaviness, heaviness in limbs, sticky mouth, sticky stool, abdominal distension, dark cloudy complexion, decreased appetite/appetite absent, petechiae /cracks, dark purple lips/gums, abnormal sublingual veins, squamous and dry skin, darkish complexion, ecchymosis, body weight, morbidobesity, cyanosis, lethargy, chest pain, dark purple tongue, fat tooth-imprinted tongue, greasy coating, white tongue coating, soft pulse, slippery pulse, and uneven pulse. The 25 Chinese symptom terms were manually translated into terms with English version by TCM researcher, and these terms were automatically matched against the “symptom” and “disease”

terms in Medical Subject Headings (MeSH) containing a large number of standard medical terminologies (<https://www.nlm.nih.gov/mesh/meshhome.html#>, accessed on Oct.30, 2014) and the side effect-related terms in the SIDER database (Kuhn et al., 2016).

Reliability Validation

Four different aspects of information were used to validate the reliability of the syndrome modules: known classical formula-related targets from the Herb Ingredients’ Targets (HIT) (Ye et al., 2011), known IHD-related targets, the HPO (Kohler et al., 2017) and the published literatures. Effective ingredients and their corresponding targets from herbs contained in *Huang Lian Wen Dan Decoction*, *Gua Lou Xie Bai BanXia Decoction*, *Dan Shen Yin Decoction* and *Tao Hong Si Wu Decoction* were

integrated from the HIT (accessed on Apr.12, 2015; Ye et al., 2011). As we did not predict the exact number of targets in these formulas, one disease modules may include BS's classical formula-related targets and PS's classical formula-related targets at the same time, the difference of occurrence probability would be affected by the unequal number of the herbs consisted of classical formulas. In order to avoid the difference, we added one herbs *Rhizoma Acori Talarinowii* (*ShiChangPu* 石菖蒲 in Chinese) as an herb utilized to treat PS with IHD because this herb was widely used to eliminate phlegm syndrome according to TCM theory and clinical practice (Gao et al., 2015). Thus, we ensured the number of herbs used to treat PS with IHD was equal to the number of herbs used to treat BS with IHD. Then, these known classical formula-related targets were mapped into disease modules. Known IHD-related targets were obtained from the Therapeutic Target Database (TTD) (accessed on Apr.10, 2015) (Zhu et al., 2012) and the DrugBank database (accessed on Apr.10, 2015) (Wishart et al., 2008; Law et al., 2014) under the assumption that modules containing known IHD-related targets were more accurate and reliable than modules that did not contain any IHD-related target. In the TTD, IHD-related targets were identified using 20-25 corresponding International Classification of Diseases (ICD) disease names. In the DrugBank database, disease names were used as keywords to search for IHD-related targets. The HPO, independent of the HSDN database, was a computational representation of a knowledge domain based upon a controlled, standardized vocabulary to describe entities and the semantic relationships between them (Kohler et al., 2017). So HPO was used to validate symptom-gene relationships in the syndrome modules. Published literatures were also collected to validate the reliability of syndrome modules.

Enrichment Analyses

To validate the reliability of the integrated results and explore the molecular mechanisms of disease modules (syndrome modules belonged to disease modules), gene ontology (GO), and pathway enrichment analyses were carried out on IHD-associated gene set and disease modules. There are many online analysis platforms and tools to conduct GO enrichment analysis and Kyoto Encyclopedia of Genes and Genomes (KEGG)¹ pathway analysis (Khatri and Draghici, 2005), in our study, we used the KOBAS 2.0 database (Xie et al., 2011). Gene Ontology database and KEGG PATHWAY database were chosen for analysis in the KOBAS 2.0 settings. By calculating the hypergeometric distribution relationship, we obtained statistically significant GO terms and pathways. We performed Bonferroni corrections to control the false-positive rate in the analysis, and finally filtered the disease modules by CPVs (corrected *p*-values), which resulted in significant GO terms and pathways (CPV < 0.01).

¹KEGG Toll-like Receptor Signaling Pathway - Homo sapiens (human) [Online]. KEGG. Available online at: http://www.genome.jp/kegg-bin/show_pathway?hsa04620/hsa:51311%09red/hsa:3569%09red/hsa:7100%09red/hsa:353376%09red/hsa:7096%09red/hsa:7097%09red/hsa:7124%09red/hsa:54472%09red/hsa:4615%09red/hsa:23643%09red/hsa:3576%09red/hsa:7099%09red/hsa:114609%09red/hsa:3553%09red/hsa:51284%09red/hsa:54106%09red/hsa:929%09red/hsa:51135%09red/hsa:3654%09red (Accessed May 5, 2017).

RESULTS

IHD-Associated Genes

As shown in **Figure 2A** and Table S1–4, a total of 604 IHD-associated genes were obtained from the CADgene database (accessed on Oct.30, 2014, see Table S1). As shown in **Table 1** and **Figure 2B**, MeSH term headings referring to IHD and its subtypes (up-down relationships between subtypes also included) were identified by searching 2014 MeSH. (<https://www.nlm.nih.gov/mesh/meshhome.html#>, accessed on Oct.30, 2014). “Myocardial Ischemia” was determined to be an appropriate MeSH term to search PubMed. Therefore, the search strategy “Myocardial Ischemia and Genetic” was applied in PubMed to identify all related published studies that investigated relationships between IHD and human genes. In addition, we used the names (strings) of all human genes from NCBI to select more specific literatures. We obtained a total of 15,670 records covering 1,723 human genes. There were 442 overlapping genes between the 604 IHD-associated genes from the CADgene database and 1,723 genes in the literatures. After manually checking the remaining 1,281 genes in PubMed, we identified 450 IHD-associated genes (see Table S2) and excluded 831 genes (see Table S3). Among the 831 genes, the string names of 36 genes (36/831 = 0.0433 < 0.05, potentially false negatives) were common and likely referred to other things. For example, DBP often referred to diastolic blood pressure and not a gene name, and therefore, hits with DBP were directly not regarded as associated genes. A total of 383 IHD-associated genes appeared in the OMIM database and GWAS after using corresponding disease names in **Table 1** as keywords to search the associated genes in

TABLE 1 | MeSH term headings and their corresponding disease names in the context of ischemic heart disease.

Unique MeSH term ID	MeSH headings	Corresponding disease names
D054058	Acute Coronary Syndrome	Acute Coronary Syndrome
D000787	Angina Pectoris	Angina Pectoris
D000788	Angina Pectoris, Variant	Variant Angina Pectoris
D060050	Angina, Stable	Stable Angina
D000789	Angina, Unstable	Unstable Angina
D003324	Coronary Artery Disease	Coronary Artery Disease
D017566	Microvascular Angina	Microvascular Angina
D056988	Anterior Wall Myocardial Infarction	Anterior Wall Myocardial Infarction
D056989	Inferior Wall Myocardial Infarction	Inferior Wall Myocardial Infarction
D009203	Myocardial Infarction	Myocardial Infarction
D017202	Myocardial Ischemia	Myocardial Ischemia
D015428	Myocardial Reperfusion Injury	Myocardial Reperfusion Injury
D017682	Myocardial Stunning	Myocardial Stunning
D012770	Shock, Cardiogenic	Cardiogenic Shock
D016757	Death, Sudden, Cardiac	Cardiac Sudden Death

Disease-Connect (Liu et al., 2014). We identified 381 genes that overlapped with the above results. Finally, we obtained 1,056 IHD-associated genes (see Table S4) which mainly were relevant to the molecular functions of response to wounding (GO:0009611) and inflammatory response (GO:0006954) et al, and the enriched pathways, such as complement and coagulation cascades(hsa04610) and cytokine-cytokine receptor interaction (hsa04060) (see Table 2 for top 10 significant GO terms and enriched pathways).

IHD Disease Modules

From the PPI network derived from String V9.1 database, we obtained 157 potential disease modules covering a total of 11,380 proteins. As shown in Table S5, there were 997 IHD-associated genes appearing in 157 potential disease modules. Thus, the average proportion of IHD-associated genes appearing in potential disease modules was 8.76% (=997/11,380). Using the relative risk measurement, we finally identified 8 disease modules (i.e., Modules 195, 204, 95, 203, 194, 212, 59, and 146) with the proportion of associated genes in corresponding disease modules >8.76% × 3 = 26.28%, see Table 3). We also analyzed the enrichment GO and pathway of disease modules and These disease modules had enriched pathways on Renin-angiotensin system (hsa04614), Vitamin digestion and absorption (hsa04977) et al, with the molecular functions of angiotensin maturation(GO:0002003), extracellular space(GO:0005615) et al (see Table 4 for the top significant GO terms and pathway in disease modules).

PSCS Syndrome Modules

In the Human Symptoms Disease Network (Zhou et al., 2014b), we identified 1,219 genes corresponding to the following seven symptoms: ecchymosis (MeSH ID: D004438), body weight (MeSH ID: D012816), obesity, morbid (MeSH ID: D009767), cyanosis (MeSH ID:D003490), lethargy (MeSH ID: D053609), and chest pain (MeSH ID:D002637) (see Table S6). We mapped a total of 890 symptom-related genes into 157 potential disease modules. Compared to the average proportion (890/11,380 = 7.82%), Modules 95 and 195 (as shown in Figure 2C), which included significantly more symptom-related genes (see Table 3), were designated syndrome modules.

Validation

A total of 133 distinct known classical formula-related targets for PS with IHD (see Table S7) and 152 distinct classical formula-related targets for BS with IHD (see Table S8) from HIT were mapped into disease modules. There were 3 BS-related targets and 1 PS-related target in Module 195 and 19 BS-related targets and 15 PS-related targets in Module 95 (as shown in Figure 2C), suggesting these two modules represent PSCS with IHD based on the co-occurrence of prescriptions and syndromes (Deng et al., 2012; Lu et al., 2014).

Overall, we obtained 158 distinct IHD-related targets, in which 34 distinct IHD-related targets were curated from the TTD database (47 targets in total, see Table S9) and 140 distinct IHD-related targets from the DrugBank database (259 targets in total, see Table S10). When these 158 targets were mapped into disease modules (see Table S5), as shown in Figure 2C, Module 195 contained 4 IHD-related targets and Module 95 contained 7 IHD-related targets (as shown in Figure 2C). This directly demonstrated the reliability of Modules 195 and 95 from the pharmacological perspective.

We identified corresponding symptom-gene relationships for 3 symptoms in Module 95 in the HPO (as shown in Figure 2C): obesity (HP:0001513) -WWOX (Gene ID:51741), cyanosis (HP:0000961)-GJA1(Gene ID:2697), and chest pain(HP:0100749)-WWOX(Gene ID: 51741). However, we found no corresponding symptom-gene relationships for the symptom-related genes in Module 195.

Based on the literatures, matrix metallo peptidase 9 (MMP9) in Module 95, which was simultaneously an IHD-associated gene/IHD-related target/classical formula-related target for BS and PS with IHD, was chose as an example for analysis. A synthesis of available evidence suggested that MMP9-1562C/T polymorphism was a risk factor for CHD (Liu et al., 2013), and MMP9 serum levels were consistently associated with markers of carotid atherosclerosis and lesion vulnerability (Blankenberg et al., 2003; Tanner et al., 2011; Silvello et al., 2014). Importantly, two studies in China demonstrated that MMP9 levels in the blood decreased significantly after treatment with *Shan Zha Xiao Zhi Decoction* (Li, 2011; Wang et al., 2012b) or *Danlou Tablet* (Wang et al., 2012a) (another two formulas use to treat PSCS with IHD) compared with the levels prior

TABLE 2 | Top 10 Significant GO terms and pathways (CPV < 0.01) in the ischemic heart disease associated gene set.

GO terms	CPV	Pathway	CPV
Response to wounding(GO:0009611)	6.78E-28	Complement and coagulation cascades(hsa04610)	2.09E-7
Inflammatory response(GO:0006954)	1.20E-27	Cytokine-cytokine receptor interaction(hsa04060)	5.55E-6
Circulatory system process(GO:0003013)	3.25E-25	Malaria(hsa05144)	1.02E-5
Blood circulation(GO:0008015)	3.86E-25	NF-kappa B signaling pathway(hsa04064)	4.03E-5
Regulation of response to wounding(GO:1903034)	5.20E-25	Inflammatory bowel disease (IBD)(hsa05321)	5.21E-5
Response to oxygen-containing compound(GO:1901700)	5.20E-25	TNF signaling pathway(hsa04668)	6.32E-5
Response to lipid(GO:0033993)	2.09E-24	Pathways in cancer(hsa05200)	2.51E-4
Response to lipopolysaccharide(GO:0032496)	1.82E-22	Chagas disease (American) (trypanosomiasis)(hsa05142)	3.90E-4
Response to molecule of bacterial origin(GO:0002237)	3.10E-22	Legionellosis(hsa05134)	4.29E-4
Regulation of response to external stimulus(GO:0032101)	4.43E-22	Leishmaniasis(hsa05140)	7.69E-4

TABLE 3 | Ischemic heart disease associated genes, symptom-related genes, known classical formula-related targets and IHD-related targets appearing in disease modules.

Module	IHD-associated genes		Symptom-related genes		Known classical formula-related and IHD-related targets		
	No. IHD-associated genes/genes in the modules	p-value*	Symptoms genes/genes in the modules	p-value ^Δ	Known IHD-related targets	Known classical formula-related targets for BS with IHD	Known classical formula-related targets for PS with IHD
Module 195	10/24	2.55E-4	10/24	1.08E-4	4	3	1
Module 204	12/31	1.11E-4	5/31	0.183	1	1	0
Module 95	76/204	1.45E-29	40/204	1.83E-7	7	19	15
Module 203	21/59	1.17E-6	10/59	0.033	4	0	0
Module 194	22/62	6.57E-7	10/62	0.040	7	3	0
Module 212	12/37	4.23E-4	8/37	0.015	0	1	2
Module 59	23/77	4.21E-6	23/77	0.037	6	2	2
Module 146	44/149	2.21E-13	16/149	0.227	9	2	6

(1) P value* represents the p value of the proportion of IHD-associated genes in the modules compared to the average distribution of 997 IHD-associated genes in 157 potential disease modules. (2) P value^Δ represents the p value of the proportion of PSCS symptom-related genes in 157 potential disease modules compared to the average distribution of 890 symptom-related genes. (3) The color rows represent the modules included significantly more symptom-related genes were designated PSCS syndrome modules.

TABLE 4 | The top significant GO terms and pathways in disease modules.

Module	GO enrichment function analysis		Pathway enrichment function analysis	
	GO terms	CPV	Pathways	CPV
Module 195	Angiotensin maturation(GO:0002003)	7.25E-10	Renin-angiotensin system(hsa04614)	2.91E-10
Module 204	Extracellular space(GO:0005615)	2.05E-6	Vitamin digestion and absorption(hsa04977)	0.039
Module 95	Response to bacterium(GO:0009617)	4.39E-21	Toll-like receptor signaling pathway(hsa04620)	1.88E-9
Module 203	Extracellular space(GO:0005615)	1.08E-16	Complement and coagulation cascades(hsa04610)	5.59E-7
Module 194	Blood coagulation(GO:0007596)	2.79E-23	Complement and coagulation cascades(hsa04610)	1.23E-32
Module 212	Platelet alpha granule lumen(GO:0031093)	3.59E-27	TGF-beta signaling pathway(hsa04350)	1.96E-3
Module 59	Cellular lipid metabolic process (GO:0044255)	9.59E-42	Ether lipid metabolism(hsa00565)	4.42E-38
Module 146	G-protein coupled receptor signaling pathway(GO:0007186)	1.51E-58	Neuroactive ligand-receptor interaction(hsa04080)	1.02E-40

to treatment ($p < 0.01$). Additionally, two genes in Module 195, specifically angiotensin-converting enzyme (ACE) and plasminogen activator, urokinase (PLAU), were IHD-associated genes/known IHD-related targets / symptom-related genes. ACE was the target of inhibitor drugs, such as ramipril, trandolapril, and benazepril, all FDA-approved, which were used to treat hypertension to reduce the rate of death, myocardial infarction, and stroke in individuals at high risk for cardiovascular events. Our study indicated that ACE was related to the symptom morbid obesity. According to Edson Lucas Santos’s research, the ACE inhibitor enalapril decreased body weight gain and increased life span by activating PPAR γ in adipose tissue (Santos et al., 2009). Additionally, based on a recent clinical trial, PLAU appeared to be related to the symptom chest pain. Furthermore, soluble urokinase plasminogen activator receptor was a strong predictor of adverse long-term outcomes and improves risk stratification beyond traditional risk variables in chest pain patients admitted with suspected non-ST-segment elevation acute coronary syndrome (Lyngbaek et al., 2013). *Bao Xin decoction* (another formula to treat PSCS with IHD) was effective in curing CAD with stable angina pectoris and acting by inhibiting serum interleukin 6 (IL-6), intercellular

adhesion molecule 1 (ICAM-1) and tumor necrosis factor- α (TNF- α) levels and decreasing inflammatory reactions (Peng et al., 2011). Notably, IL-6 and ICAM-1 appeared in Module 95. Another study reported significantly increased ($p < 0.05$) serum ICAM-1 levels in acute coronary syndrome patients, and serum ICAM-1 levels were higher in patients with PSCS (Ma et al., 2017).

Finally, evidence suggested that corresponding targets in Module 195 may be used to treat other types of disease for which PSCS was the main syndrome or protein levels correlated with PSCS. For example, C-reactive protein (CRP) mRNA was the target of ISIS-CRPRx, which was used to treat trial fibrillation (Adis Insight, 2017). According to another study, BS and PS represented the primary pathogenesis of trial fibrillation with CHD based on the distribution of TCM syndrome in 259 patients with a trial fibrillation and CHD (Yin et al., 2007). Nitric oxide synthase 2 (NOS2), which also appeared in Module 195, was the target of triflusal, which was used to prevent cardiovascular events such as stroke. A clinical epidemiological survey of 1,418 stroke patients showed BS and PS were both the main pathological factors of apoplexy throughout stroke: during the acute stage, the rate of PSCS occurrence was 66.4%. During the

recovery period, the rate of PSCS was 68.7%. In the sequelae phase, the rate was 61.2% (Yang et al., 2004).

DISCUSSION

Based on our study, Modules 195 and 95 may be closely associated with PSCS with IHD. From the enrichment function analysis results of these two potentially syndrome modules, we also further validated the relativity of the two modules with PSCS with IHD. For example, it showed that MyD88-dependent pathway that leads to the production of proinflammatory cytokines, such as TNF- α , interleukin-6 (IL-6), interleukin-8 (IL-8), and interleukin-1 β (IL-1 β), accompanied by the rapid activation of NF-kappa B and MAPK signaling pathways (KEGG)¹ (as shown in the website Toll-like receptor signaling pathway, 2016, red objects indicated proteins that appear in Module 95). IL-1 β , TNF- α , and IL-6 stimulated the liver to produce high-sensitivity CRP (hs-CRP) (Yamashita et al., 2015), which had a strong relationship with the recurrent events of cardiovascular diseases as shown in several randomized clinical trials (Ridker et al., 2011; Everett et al., 2013). One study reported that was fully compatible with the existence of a multi-cytokine resistin pathway in cells and tissues (resistin affects IL-1 β , IL-6, IL-8, IL-12, and TNF- α expression, thus suggesting the existence of a multi-cytokine “resistin pathway”). Additionally, another study demonstrated that *Danlou tablets* [the only formula approved by the China Food and Drug Administration to treat PSCS with IHD (Yang and Wang, 2012)] reduced levels of serum resistin, endothelin-1 (ET-1), IL-6 and TNF- α , improved NO levels and relieved vascular endothelial injury in atherosclerotic model rats (Miu et al., 2016).

In our study, a total of 1,056 IHD-associated genes were curated after validating each disease-gene relationship in the biomedical literatures. This gene list may be the most comprehensive phenotype-genotype association data repository for IHD molecular mechanisms. According to our functional enrichment analysis results for the IHD-associated gene set (see Table S11), the primary pathology consisted of response to wounding, inflammatory response, circulatory system process, blood circulation, regulation of response to wounding, response to oxygen-containing compound, response to lipid, response to lipopolysaccharide, response to molecule of bacterial origin, and regulation of response to external stimulus. IHD was a complex disease, and there had been many hypotheses to explain its pathology and mechanism, such as the thrombosis theory (Zaman et al., 2000), lipid infiltration (Castelli et al., 1986), response to injury hypothesis, oxidative hypothesis (Stocker and Keaney, 2004), immune and inflammatory mechanisms (Epstein and Ross, 1999), shear stress hypothesis (Ku et al., 1985), and others. The function analysis results for the IHD-associated gene set were mostly consistent with current knowledge and provided strong evidence that the genes we integrated in the study were reliably related to IHD. However, reasons why the results were not completely consistent with present knowledge of IHD may include: (1) interactome incompleteness: current PPI maps had only covered <10% of all potential interactions (Hart et al., 2006;

Venkatesan et al., 2009; Vidal et al., 2011). Thus, many additional isolated proteins may be part of a single disease module, but the missing links had not been isolated. (2) False positives: not all genes in the seed gene set had a mechanistic association with IHD.

Unlike the understanding of a syndrome in the context of the neuro-endocrine-immune network (Li et al., 2007, 2013), we proposed a network medicine module-based strategy by integrating symptoms-gene relationship, then validating by compound-target-disease associations and known knowledge. And we identified relevant modules representing one syndrome of a complex disease under the guideline of integrating pattern classification and biomedical diagnosis using a systems biology approach (Lu et al., 2012). The relationships between diseases and syndromes were complex, one disease may express different syndromes, while one syndrome may appear in different diseases. For example, one previous study had reported that 223 patients with acute cerebral infarction could be divided into six syndromes: wind syndrome, fire syndrome, PS, BS, deficiency of qi syndrome, and yin deficiency causing hyperactivity of yang syndrome (Li et al., 2011). To identify the modules representing PSCS with IHD as accurately as possible, we first collected PSCS symptom-related genes to represent a syndrome where “syndrome” consisted of the overall “manifestation” of human body pathological and physiological changes expressed in the form of information obtained from four diagnostic methods: inspection, listening and smelling, interrogation, and pulse feeling and palpation (Shi et al., 2014a). To confirm the reliability of the PSCS modules, network medicine approaches were implemented to integrate the data from multiple databases in which network pharmacology approaches provided new insight to understand TCM syndrome from a scientific perspective (Li et al., 2013; Hao da and Xiao, 2014; Fang et al., 2017). Besides, classical formula-related target information was integrated to demonstrate that Modules 195 and 95 representing PSCS with IHD from the classical formula perspective. Additionally, because known classical formula-related targets are potentially less credible than known IHD-related targets, IHD-related targets were used for further confirmation. Finally, the HPO and published studies were used to validate our results. After collecting different types of evidence as completely as we could, our study suggested that these two modules represent PSCS with IHD.

The genes and proteins that appeared in Module 195 and Module 95 may be biomarkers for PSCS with IHD, and these modules also comprise classical formula-related target and IHD-related target information, indicating the potential of these targets for the treatment of IHD and the discovery of new drugs based on Chinese formulae and herbs.

Our results were affected by incomplete data and may even be enriched for biased publications. Furthermore, different algorithms may result in different division results for the topological modules. Due to its timing and conditions, this study did not experimentally validate the two syndrome modules. However, researchers had previously explored potential therapeutic targets by comparing the target proteins of classic traditional TCM herbal formulas and modern drugs used to treat

other types of diseases, as described in Qianru Zhang's study (Zhang et al., 2017).

Notwithstanding these challenges and shortcomings, we believed that this study puts forward a novel strategy to identify modules representing syndromes of complex diseases and provide insights into the molecular mechanism of PSCS with IHD. In future studies, we will incorporate experimental evidence and clinical research to validate the reliability of these two syndrome modules.

CONCLUSION

We proposed a network medicine-based approach to identify the underlying molecular modules of PSCS complicated with IHD, which could be used for interpreting the pharmacological mechanisms of well-established Chinese herbal formulas (e.g., *Tao Hong Si Wu Decoction*, *Dan Shen Yin Decoction*, *Hunag Lian Wen Dan Decoction*, and *Gua Lou Xie Bai Ban Xia Decoction*). In addition, our results delivered novel understandings of the molecular network mechanisms of IHD phenotype subtypes with PSCS complications, which would be both insightful for IHD precision medicine and the integration of disease and TCM syndrome diagnoses.

AUTHOR CONTRIBUTIONS

J-QH and X-ZZ: conceived and designed the research; W-MX, KY, L-JJ, J-QH, and X-ZZ: performed the following research projects: curation of the IHD-associated genes; W-MX, L-JJ, X-ZZ, KY, and J-QH: identification of disease and syndrome modules, enrichment function analysis; W-MX, KY, and X-ZZ: results validation; W-MX, KY, X-ZZ, and J-QH and W-MX:

wrote the manuscript. All authors have reviewed and revised the manuscript.

FUNDING

The study was funded by the National Key Research and Development Project in China (no.2014CB542903), the Fundamental Research Funds for the Central Public Welfare Research Institutes (no.YZ-1668), The Innovative Funding for Ph.D. Students at China Academy of Chinese Medical Sciences (CX201702), the Fundamental Research Funds for the Central Universities (K17JB00100, K17JB0023), the Special Programs of Traditional Chinese Medicine (201407001, JDZX2015170, JDZX2015171), and the National Key Technology R&D Program (2013BAI02B01 and 2013BAI13B04).

ACKNOWLEDGMENTS

We thank Meng Wu, Xu-Guang Tao, and Dong Bai (Research center of disease and syndrome, Institute of Basic theory of Traditional Chinese Medicine, China Academy of Chinese Medical Sciences) for useful discussions and suggestions. We also thank Lin Liu for searching the PubMed literatures and thank Professor Gao Lianli (Graduate school of China Academy of Chinese Medical Sciences) for the help with the proof reading.

SUPPLEMENTARY MATERIAL

The Supplementary Material for this article can be found online at: <https://www.frontiersin.org/articles/10.3389/fphys.2018.00007/full#supplementary-material>

REFERENCES

- Adis Insight (2017). *Drug profile ISIS CRPRx [Online]*. Available online at: <http://adisinsight.springer.com/drugs/800024563> (Accessed May 15, 2017).
- Bai, D., and Song, J. (2012). Plasma metabolic biomarkers for syndrome of phlegm and blood stasis in hyperlipidemia and atherosclerosis. *J. Tradit. Chin. Med.* 32, 578–583. doi: 10.1016/S0254-6272(13)60074-6
- Barabasi, A. L., Gulbahce, N., and Loscalzo, J. (2011). Network medicine: a network-based approach to human disease. *Nat. Rev. Genet.* 12, 56–68. doi: 10.1038/nrg2918
- Bi, Y. F., Mao, J. Y., and Wang, X. L. (2013). Survey on the distribution and combination of TCM syndrome elements of coronary artery disease in 5 provinces and cities of north China plain. *China J. Tradit. Chin. Med. Pharm.* 28, 3395–3399.
- Bi, Y. F., Wang, X. L., Zhao, Z. Q., Zhi, Q., Hou, Y. Z., Wang, S. A., et al. (2017). Clinical epidemiological investigation on current syndrome characteristics of coronary heart disease in chinese medicine. *J. Tradit. Chin. Med.* 58, 2013–2019. doi: 10.13288/j.11-2166/r.2017.23.009
- Blankenberg, S., Rupprecht, H. J., Poirier, O., Bickel, C., Smieja, M., Hafner, G., et al. (2003). Plasma concentrations and genetic variation of matrix metalloproteinase 9 and prognosis of patients with cardiovascular disease. *Circulation* 107, 1579–1585. doi: 10.1161/01.CIR.0000058700.41738.12
- Castelli, W. P., Garrison, R. J., Wilson, P. W., Abbott, R. D., Kalousdian, S., and Kannel, W. B. (1986). The incidence of coronary heart disease and lipoprotein cholesterol levels. The Framingham Study. *JAMA* 256, 2835–2838. doi: 10.1001/jama.1986.03380200073024
- Chen, B., and Butte, A. J. (2013). Network medicine in disease analysis and therapeutics. *Clin. Pharmacol. Ther.* 94, 627–629. doi: 10.1038/clpt.2013.181
- Chen, K. J. (2012). Blood stasis syndrome and its treatment with activating blood circulation to remove blood stasis therapy. *Chin. J. Integr. Med.* 18, 891–896. doi: 10.1007/s11655-012-1291-5
- Chen, M. M., Yang, F. F., Yang, X. M., Lai, X. M., and Gao, Y. X. (2016). Systematic understanding of mechanisms of a chinese herbal formula in treatment of metabolic syndrome by an integrated pharmacology approach. *Int. J. Mol. Sci.* 17:2114. doi: 10.3390/ijms17122114
- China Association of Traditional Chinese Medicine (2017). *Clinical Diagnostic Criteria of Phlegm-Dampness Syndrome with Coronary Atherosclerotic Heart Disease*. Beijing China Press of Traditional Chinese Medicine.
- Chinese Minister of Health (2010). *Diagnostic Criteria for Coronary Atherosclerotic Heart Disease*. China.
- Chung, K. F. (2014). Defining phenotypes in asthma: a step towards personalized medicine. *Drugs* 74, 719–728. doi: 10.1007/s40265-014-0213-9
- Deng, J. G., Hao, E. W., and Du, Z. C. (2012). The establishment and evaluation of the model rats of blood stasis and heat accumulation syndrome. *Zhongguo Zhong Xi Yi Ji He He Za Zhi* 32, 402–405.
- Dittrich, M. T., Klau, G. W., Rosenwald, A., Dandekar, T., and Muller, T. (2008). Identifying functional modules in protein-protein interaction networks: an integrated exact approach. *Bioinformatics* 24, i223–i231. doi: 10.1093/bioinformatics/btn161
- Epstein, F. H., and Ross, R. (1999). Atherosclerosis—an inflammatory disease. *N. Engl. J. Med.* 340, 115–126. doi: 10.1056/NEJM199901143400207

- Everett, B. M., Pradhan, A. D., Solomon, D. H., Paynter, N., Macfadyen, J., Zaharris, E., et al. (2013). Rationale and design of the cardiovascular inflammation reduction trial: a test of the inflammatory hypothesis of atherothrombosis. *Am. Heart J.* 166, 199.e115–207.e115. doi: 10.1016/j.ahj.2013.03.018
- Fang, H. Y., Zeng, H. W., Lin, L. M., Chen, X., Shen, X. N., Fu, P., et al. (2017). A network-based method for mechanistic investigation of Shexiang Baoxin Pill's treatment of cardiovascular diseases. *Sci. Rep.* 7:43632. doi: 10.1038/srep43632
- Fang, Z. Y., Jiang, W. M., and Zhu, C. L. (2011). Distribution of Apo E gene sequencing in patients with coronary heart disease of phlegm-stasis syndrome. *Zhongguo Zhong Xi Yi Jie He Za Zhi* 31, 1201–1204.
- Franceschini, A., Szklarczyk, D., Frankild, S., Kuhn, M., Simonovic, M., Roth, A., et al. (2013). STRING v9.1: protein-protein interaction networks, with increased coverage and integration. *Nucleic Acids Res.* 41, D808–D815. doi: 10.1093/nar/gks1094
- Fraser, M., Berlin, A., Bristow, R. G., and Van der Kwast, T. (2015). Genomic, pathological, and clinical heterogeneity as drivers of personalized medicine in prostate cancer. *Urol. Oncol. Semin. Original Investig.* 33, 85–94. doi: 10.1016/j.urolonc.2013.10.020
- Fu, C. G., Gao, Z. Y., Wang, P. L., Wang, C. L., Xu, H., Shi, D. Z., et al. (2012). Study on the diagnostic criteria for coronary heart disease patients of blood stasis syndrome. *Chin. J. Integr. Tradit. Western Med.* 32, 1285–1286.
- Fu, X. J., Mervin, L. H., Li, X. B., Yu, H. Y., Li, J. Y., Zobir, S. Z. M., et al. (2017). Toward understanding the cold, hot, and neutral nature of Chinese Medicines using *in silico* mode-of-action analysis. *J. Chem. Inf. Model.* 57, 468–483. doi: 10.1021/acs.jcim.6b00725
- Gao, X. D., Feng, X. W., Qiao, W. J., and Sheng, Z. J. (2015). Analyzing of matched pair drugs on the treatment of coronary heart disease by Zhang Jingsheng. *J. Pract. Tradit. Chin. Intern. Med.* 29, 16–18. doi: 10.13729/j.issn.1671-7813.2015.10.07
- Gao, Y., Zhong, H. Z., Ma, B., and Huang, Y. (2012). Randomized, double-blind, parallel-controlled clinical trial on correspondence of prescriptions and Traditional Chinese Medicine syndrome of ischemic stroke. *J. Tradit. Chin. Med.* 32, 335–342. doi: 10.1016/S0254-6272(13)60034-5
- Goh, K. I., Cusick, M. E., Valle, D., Childs, B., Vidal, M., and Barabasi, A. L. (2007). The human disease network. *Proc. Natl. Acad. Sci. U.S.A.* 104, 8685–8690. doi: 10.1073/pnas.0701361104
- Gong, L. (2012). The effect of Huang Lianwendan decoction on inflammatory factors and immunity factors of stable angina pectoris. *Guangzhou Univ. Tradit. Chin. Med.* Available online at: <http://cdmd.cnki.com.cn/Article/CDMD-10572-1012396068.htm>
- Gu, C. D. (1956). *The Inner Classic of the Yellow Emperor, Essential Questions*. Suwen; Beijing: Huangdi Neijing; People's Medical Publishing House.
- Hao da, C., and Xiao, P. G. (2014). Network pharmacology: a Rosetta Stone for traditional Chinese medicine. *Drug Dev. Res.* 75, 299–312. doi: 10.1002/ddr.21214
- Hao, E. W., Deng, J. G., Du, Z. C., Bao, C. H., Lu, X. Y., Deng, X. Q., et al. (2013). Study on the regulation role of semen persicae to cAMP-PKA signal pathway in the rats with cold and heat blood stasis syndrome. *Zhong Yao Cai* 36, 780–783.
- Hart, G. T., Ramani, A. K., and Marcotte, E. M. (2006). How complete are current yeast and human protein-interaction networks? *Genome Biol.* 7:120. doi: 10.1186/gb-2006-7-11-120
- Hopkins, A. L. (2007). Network pharmacology. *Nat. Biotechnol.* 25, 1110–1111. doi: 10.1038/nbt1007-1110
- Hu, J. Q., Wang, C. C., Duan, F., Li, X. T., Liu, R., Xu, W. M., et al. (2016). Research on the diagnostic criteria for coronary heart disease with phlegm-stasis cementation syndrome of coronary heart disease. *Zhongguo Zhong xi yi jie he za zhi* 36, 1164–1168. doi: 10.7661/CJIM.2016.10.1164
- Hua, L., Xia, H., Zhou, P., Li, D., and Li, L. (2014). Combination of microRNA expression profiling with genome-wide SNP genotyping to construct a coronary artery disease-related miRNA-miRNA synergistic network. *Biosci. Trends* 8, 297–307. doi: 10.5582/bst.2014.01031
- Huang, Y., Wang, J. S., Yin, H. J., and Chen, K. J. (2013). The Expression of CD14⁺CD16⁺ monocyte subpopulation in coronary heart disease patients with blood stasis syndrome. *Evid. Based Complement. Alternat. Med.* 2013:416932. doi: 10.1155/2013/416932
- Jiang, N., Liu, H. F., Li, S. D., Zhou, W. X., Zhang, Y. X., Zhang, Q., et al. (2015). An integrated metabolomic and proteomic study on Kidney-Yin Deficiency syndrome patients with diabetes mellitus in China. *Acta Pharmacol. Sin.* 36, 689–698. doi: 10.1038/aps.2014.169
- Khatri, P., and Draghici, S. (2005). Ontological analysis of gene expression data: current tools, limitations, and open problems. *Bioinformatics* 21, 3587–3595. doi: 10.1093/bioinformatics/bti565
- Kohler, S., Vasilevsky, N. A., Engelstad, M., Foster, E., McMurry, J., Ayme, S., et al. (2017). The human phenotype ontology in 2017. *Nucleic Acids Res.* 45, D865–D876. doi: 10.1093/nar/gkw1039
- Kong, D., Wang, Y., Liu, Y., Zhang, Z., Liu, G., Qi, W., et al. (2014). The association between blood lipid and phlegm turbidity syndrome of angina pectoris: a systematic review and meta-analysis. *Complement. Ther. Med.* 22, 801–813. doi: 10.1016/j.ctim.2014.05.008
- Ku, D. N., Giddens, D. P., Zarins, C. K., and Glagov, S. (1985). Pulsatile flow and atherosclerosis in the human carotid bifurcation. Positive correlation between plaque location and low oscillating shear stress. *Arteriosclerosis* 5, 293–302. doi: 10.1161/01.ATV.5.3.293
- Kuhn, M., Letunic, I., Jensen, L. J., and Bork, P. (2016). The SIDER database of drugs and side effects. *Nucleic Acids Res.* 44, D1075–D1079. doi: 10.1093/nar/gkv1075
- Law, V., Knox, C., Djoumbou, Y., Jewison, T., Guo, A. C., Liu, Y., et al. (2014). DrugBank 4.0: shedding new light on drug metabolism. *Nucleic Acids Res.* 42, D1091–D1097. doi: 10.1093/nar/gkt1068
- Li, D. D. (2011). *Study of Shan-Zha-xiao-zhi Capsule on the Stability of Vulnerable Plaques in CHD Patients*. Master, Guangzhou University of Chinese Medicine.
- Li, G. H., Jiang, H. Y., Xie, Y. M., Jiang, J. J., Yang, W., Zhao, W., et al. (2014). Analysis of traditional Chinese medicine syndrome, traditional Chinese medicine and western medicine in 84 697 patients with coronary heart disease based on big data. *Zhongguo Zhong Yao Za Zhi* 39, 3462–3468. doi: 10.4268/cjcm20141809
- Li, J., Cao, R., Zhu, H. X., and Hu, W. Z. (2011). A study of traditional Chinese medicine syndromes correlated to neurologic function or to coagulation function in patients with acute cerebral infarction. *Zhongguo Wei Zhong Bing Ji Jiu Yi Xue* 23, 329–332. doi: 10.3760/cma.j.issn.1003-0603.2011.06.003
- Li, Q., Fan, J. Y., and Han, J. Y. (2015). Chinese herbal remedies affecting thrombosis and hemostasis: a review. *World J. Tradit. Chin. Med.* 1, 38–49. doi: 10.15806/wjcm.2311-8571.2014.0022
- Li, R., Ma, T., Gu, J., Liang, X., and Li, S. (2013). Imbalanced network biomarkers for traditional Chinese medicine Syndrome in gastritis patients. *Sci. Rep.* 3:1543. doi: 10.1038/srep01543
- Li, S., and Zhang, B. (2013). Traditional Chinese medicine network pharmacology: theory, methodology and application. *Chin. J. Nat. Med.* 11, 110–120. doi: 10.3724/SP.J.1009.2013.00110
- Li, S., Zhang, Z. Q., Wu, L. J., Zhang, X. G., Li, Y. D., and Wang, Y. Y. (2007). Understanding ZHENG in traditional Chinese medicine in the context of neuro-endocrine-immune network. *IET Syst. Biol.* 1, 51–60. doi: 10.1049/iet-syb:20060032
- Liang, W. N., Li, X. H., Li, Y. C., Li, C. D., Gao, B. Z., Gan, H. J., et al. (2013). Tongue coating microbiome regulates the changes in tongue texture and coating in patients with post-menopausal osteoporosis of Gan-shen deficiency syndrome type. *Int. J. Mol. Med.* 32, 1069–1076. doi: 10.3892/ijmm.2013.1485
- Liao, J. Q., Liu, Y. M., and Wang, J. (2016). Identification of more objective biomarkers for Blood-Stasis syndrome diagnosis. *BMC Complement. Altern. Med.* 16:371. doi: 10.1186/s12906-016-1349-9
- Lin, J. M., Guo, W. X., Wang, Y., Liu, Y., Li, Y. R., Li, H., et al. (2014). Establishment of chronic heart failure rat model of Xin-qi deficiency complicated blood stasis and edema syndrome and judgment of diagnosis information integration. *Zhongguo Zhong Xi Yi Jie He Za Zhi* 34, 1457–1462. doi: 10.7661/CJIM.2014.12.1457
- Liu, C. C., Tseng, Y. T., Li, W., Wu, C. Y., Mayzus, I., Rzhetsky, A., et al. (2014). DiseaseConnect: a comprehensive web server for mechanism-based disease-disease connections. *Nucleic Acids Res.* 42, W137–W146. doi: 10.1093/nar/gku412
- Liu, H., Liu, W., Liao, Y., Cheng, L., Liu, Q., Ren, X., et al. (2011). CADgene: a comprehensive database for coronary artery disease genes. *Nucleic Acids Res.* 39, D991–D996. doi: 10.1093/nar/gkq1106
- Liu, L., Duan, J. A., Su, S. L., Liu, P., Tang, Y. P., and Qian, D. W. (2015). Siwu series decoctions for treating primary dysmenorrhea of gynecology blood stasis syndrome—research progress of Taohong Siwu decoction. *Zhongguo Zhong Yao Za Zhi* 40, 814–821. doi: 10.4268/cjcm20150508
- Liu, Y., Wang, K. G., and Ye, W. (2008). Relation of phlegm-stasis syndrome with insulin resistance and monocyte PPARgamma mRNA expression in patients

- with coronary heart disease. *Zhongguo Zhong Xi Yi Jie He Za Zhi* 28, 602–605. doi: 10.3321/j.issn:1003-5370.2008.07.007
- Liu, Y., Wang, M., Luo, Y., Chen, C., Lu, Y., Shi, Y., et al. (2017). MiRNA-target network analysis identifies potential biomarkers for Traditional Chinese Medicine (TCM) syndrome development evaluation in hepatitis B caused liver cirrhosis. *Sci. Rep.* 7:11054. doi: 10.1038/s41598-017-11351-5
- Liu, Y., Yin, H. J., and Chen, K. J. (2011). Research on the correlation between platelet gelsolin and blood-stasis syndrome of coronary heart disease. *Chin. J. Integr. Med.* 17, 587–592. doi: 10.1007/s11655-011-0814-z
- Liu, Y., Yin, H., and Chen, K. (2013). Platelet proteomics and its advanced application for research of blood stasis syndrome and activated blood circulation herbs of Chinese medicine. *Sci. China Life Sci.* 56, 1000–1006. doi: 10.1007/s11427-013-4551-8
- Lu, A. P., Bian, Z. X., and Chen, K. J. (2012). Bridging the traditional Chinese medicine pattern classification and biomedical disease diagnosis with systems biology. *Chin. J. Integr. Med.* 18, 883–890. doi: 10.1007/s11655-012-1290-6
- Lu, X. Y., Xu, H., Li, G., and Zhao, T. (2014). Study on correspondence between prescription and syndrome and the essence of phlegm and blood stasis syndrome in coronary heart disease based on metabolomics. *Chin. J. Integr. Med.* 20, 68–71. doi: 10.1007/s11655-012-1182-z
- Lyngbaek, S., Andersson, C., Marott, J. L., Moller, D. V., Christiansen, M., Iversen, K. K., et al. (2013). Soluble urokinase plasminogen activator receptor for risk prediction in patients admitted with acute chest pain. *Clin. Chem.* 59, 1621–1629. doi: 10.1373/clinchem.2013.203778
- Ma, A., Tao, T., and Wu, Z. (2017). Changes of contents of serum ICAM-1, VCAM-1, CD40L and their relationship with TCM syndrome types in patients with acute coronary syndrome. *Mod. J. Integr. Tradit. Chin. West. Med.* 26, 356–358. doi: 10.3969/j.issn.1008-8849.2017.04.005
- Ma, J., and Liew, C. C. (2003). Gene profiling identifies secreted protein transcripts from peripheral blood cells in coronary artery disease. *J. Mol. Cell. Cardiol.* 35, 993–998. doi: 10.1016/S0022-2828(03)00179-2
- Mao, J. Y., Niu, Z. C., and Zhang, B. L. (2011). Literature analysis of studies on the TCM syndromes of coronary heart disease in the recent 40 years. *J. Tradit. Chin. Med.* 52, 958–961. doi: 10.13288/j.11-2166/r.2011.11.013
- Mao, Y. L., Yuan, Z. K., Huang, X. P., Lu, F., Tan, G., and Hu, Z. (2004). Study on relationship between the polymorphism of angiotensin converting enzyme gene and blood stasis syndrome in patients with coronary heart disease. *Zhongguo Zhong Xi Yi Jie He Za Zhi* 24, 776–780. doi: 10.3321/j.issn:1003-5370.2004.09.004
- Menche, J., Sharma, A., Kitsak, M., Ghiassian, S. D., Vidal, M., Loscalzo, J., et al. (2015). Disease networks. Uncovering disease-disease relationships through the incomplete interactome. *Science* 347:1257601. doi: 10.1126/science.1257601
- Miu, J., Chen, J., Zhou, X. B., Xu, X. M., and Mao, W. (2016). Effect of *Danlou tablets* on resistin and vascular endothelial injury in the rat model of atherosclerosis. *J. New Chin. Med.* 48, 269–272. doi: 10.13457/j.cnki.jncm.2016.04.102
- Mun, S., Ahn, I., and Lee, S. (2017). The association of quantitative facial color features with cold pattern in traditional East Asian Medicine. *Evid. Based Complement. Altern. Med.* 2017:9284856. doi: 10.1155/2017/9284856
- Ozaki, K., and Tanaka, T. (2016). Molecular genetics of coronary artery disease. *J. Hum. Genet.* 61, 71–77. doi: 10.1038/jhg.2015.70
- Pei, L., Bao, Y., Liu, S., Zheng, J., and Chen, X. (2013). Material basis of Chinese herbal formulas explored by combining pharmacokinetics with network pharmacology. *PLoS ONE* 8:e57414. doi: 10.1371/journal.pone.0057414
- Peng, W. J., Xing, Z. H., Liao, X., and Liu, W. P. (2011). Effect of Yiqi Huoxue therapy on serum IL-6, ICAM-1 and TNF- α in patients with stable angina pectoris qi deficiency and blood stasis. *J. TCM Univ. Hunan* 31, 49–51. doi: 10.3969/j.issn.1674-070X.2011.07.015.049.03
- Ren, J. X., Chang, D., and Liu, J. X. (2015). Pathophysiological characteristics of phlegm-stasis cementation syndrome in coronary heart disease: a review and update. *World J. Tradit. Chin. Med.* 4, 38–41. doi: 10.15806/j.issn.2311-8571.2015.0027
- Ren, Y., Zhang, M., Chen, K., You, S., Li, J., Guo, L., et al. (2012). Clinical and epidemiological investigation of TCM syndromes of patients with coronary heart disease in China. *Evid. Based Complement. Alternat. Med.* 2012:714517. doi: 10.1155/2012/714517
- Ridker, P. M., Thuren, T., Zalewski, A., and Libby, P. (2011). Interleukin-1 β inhibition and the prevention of recurrent cardiovascular events: rationale and design of the Canakinumab Anti-inflammatory Thrombosis Outcomes Study (CANTOS). *Am. Heart J.* 162, 597–605. doi: 10.1016/j.ahj.2011.06.012
- Roberts, R. (2014). Genetics of coronary artery disease. *Circ. Res.* 114, 1890–1903. doi: 10.1161/CIRCRESAHA.114.302692
- Samani, N. J. (1998). Molecular genetics of coronary artery disease: measuring the phenotype. *Clin. Sci.* 95, 645–646. doi: 10.1042/cs0950645
- Santos, E. L., de Picoli Souza, K., da Silva, E. D., Batista, E. C., Martins, P. J., D'Almeida, V., et al. (2009). Long term treatment with ACE inhibitor enalapril decreases body weight gain and increases life span in rats. *Biochem. Pharmacol.* 78, 951–958. doi: 10.1016/j.bcp.2009.06.018
- Shi, Q., Gao, K., Zhao, H., Wang, J., Zhai, X., Lu, P., et al. (2014a). Phenomics research on coronary heart disease based on human phenotype ontology. *Biomed. Res. Int.* 2014:240284. doi: 10.1155/2014/240284
- Shi, Q., Zhao, H., Chen, J., Li, Y., Li, Z., Wang, J., et al. (2014b). Study on Qi deficiency syndrome identification modes of coronary heart disease based on metabolomic biomarkers. *Evid. Based Complement. Altern. Med.* 2014:281829. doi: 10.1155/2014/281829
- Silvello, D., Narvaes, L. B., Albuquerque, L. C., Forgiarini, L. F., Meurer, L., Martinelli, N. C., et al. (2014). Serum levels and polymorphisms of matrix metalloproteinases (MMPs) in carotid artery atherosclerosis: higher MMP-9 levels are associated with plaque vulnerability. *Biomarkers* 19, 49–55. doi: 10.3109/1354750X.2013.866165
- Silverman, E. K., and Loscalzo, J. (2012). Network medicine approaches to the genetics of complex diseases. *Discov. Med.* 14, 143–152.
- Stocker, R., and Keane, J. F. Jr. (2004). Role of oxidative modifications in atherosclerosis. *Physiol. Rev.* 84, 1381–1478. doi: 10.1152/physrev.00047.2003
- Su, S. L., Duan, J. A., Cui, W. X., Shang, E. R., Liu, P., Bai, G., et al. (2013). Network-based biomarkers for cold coagulation blood stasis syndrome and the therapeutic effects of Shaofu Zhuyu Decoction in Rats. *Evid. Based Complement. Altern. Medicine.* 2013:901943. doi: 10.1155/2013/901943
- Subelj, L., and Bajec, M. (2011). Unfolding communities in large complex networks: combining defensive and offensive label propagation for core extraction. *Phys. Rev. E Stat. Nonlin. Soft Matter Phys.* 83(3 Pt 2):036103. doi: 10.1103/PhysRevE.83.036103
- Sun, Z. L., Xu, X., Zhou, D. P., Wang, L., Wang, F. Q., Xu, Z. Y., et al. (2015). Serum proteomic-based analysis by iTRAQ of damp-heat impeding syndrome of rheumatoid arthritis. *Eur. J. Integr. Med.* 7, 479–484. doi: 10.1016/j.eujim.2015.07.001
- Szklarczyk, D., Franceschini, A., Kuhn, M., Simonovic, M., Roth, A., Minguez, P., et al. (2011). The STRING database in 2011: functional interaction networks of proteins, globally integrated and scored. *Nucleic Acids Res.* 39, D561–D568. doi: 10.1093/nar/gkq973
- Tanner, R. M., Lynch, A. I., Brophy, V. H., Eckfeldt, J. H., Davis, B. R., Ford, C. E., et al. (2011). Pharmacogenetic associations of MMP9 and MMP12 variants with cardiovascular disease in patients with hypertension. *PLoS ONE* 6:e23609. doi: 10.1371/journal.pone.0023609
- Tikkanen, M. J., and Helio, T. (1994). From Ag phenotyping to molecular genetics: apolipoprotein B, serum lipid levels and coronary artery disease in Finland. *Clin. Genet.* 46(1 Spec No), 71–76. doi: 10.1111/j.1399-0004.1994.tb04205.x
- Toll-like receptor signaling pathway (2016). *Toll-Like Receptor Signaling Pathway - Homo sapiens (Human)*. [Online]. Available online at: http://www.genome.jp/kegg-bin/show_pathway?hsa04620/hsa:51311%09red/hsa:3569%09red/hsa:7100%09red/hsa:353376%09red/hsa:7096%09red/hsa:7097%09red/hsa:7124%09red/hsa:54472%09red/hsa:4615%09red/hsa:23643%09red/hsa:7099%09red/hsa:114609%09red/hsa:3553%09red/hsa:51284%09red/hsa:54106%09red/hsa:929%09red/hsa:51135%09red/hsa:3654%09red (Accessed June 6, 2016).
- Venkatesan, K., Rual, J. F., Vazquez, A., Stelzl, U., Lemmens, I., Hirozane-Kishikawa, T., et al. (2009). An empirical framework for binary interactome mapping. *Nat. Methods* 6, 83–90. doi: 10.1038/nmeth.1280
- Vidal, M., Cusick, M. E., and Barabasi, A. L. (2011). Interactome networks and human disease. *Cell* 144, 986–998. doi: 10.1016/j.cell.2011.02.016
- Wang, F., Xu, C. Q., He, Q., Cai, J. P., Li, X. C., Wang, D., et al. (2011). Genome-wide association identifies a susceptibility locus for coronary artery disease in the Chinese Han population. *Nat. Genet.* 43, 345–349. doi: 10.1038/ng.783
- Wang, J., and Yu, G. (2013). A systems biology approach to characterize biomarkers for blood stasis syndrome of unstable angina patients by integrating

- MicroRNA and messenger RNA expression profiling. *Evid. Based Complement. Alternat. Med.* 2013;510208. doi: 10.1155/2013/510208
- Wang, Q. (2005). Molecular genetics of coronary artery disease. *Curr. Opin. Cardiol.* 20, 182–188. doi: 10.1097/01.hco.0000160373.77190.f1
- Wang, S. H., Wang, J., and Li, J. (2012a). Efficacy assessment of treating patients with coronary heart disease angina of phlegm and stasis mutual obstruction syndrome by Danlou tablet. *Chin. J. Integr. Tradit. Western Med.* 32, 1051–1055.
- Wang, W. H., Zhao, H. Y., Chen, W. Q., Luo, Z. X., Yu, X. L., He, Q. J., et al. (2012b). Effect of Shanzha Xiaozhi capsule on high-sensitivity C-reactive protein and matrix metalloproteinases in patients with non-acute phase coronary heart disease of phlegm and blood stasis syndrome. *Chin. J. Inform. TCM* 19, 13–15. doi: 10.3969/j.issn.1005-5304.2012.01.006
- Wang, Y. H., and Xu, A. L. (2014). Zheng: a systems biology approach to diagnosis and treatments. *Science* 346, S13–S15.
- Wang, Y. L., An, D. Q., Ma, N., Zhu, M., and Sun, H. Y. (2009). Study on the changes of thrombosis-associated factors in patients with coronary heart disease of turbidity-phlegm blocking syndrome. *Chin. J. Integr. Med.* 15, 337–340. doi: 10.1007/s11655-009-0337-z
- Wang, Y., Liu, H., Lin, Y., Liu, G., Chu, H., Zhao, P., et al. (2017). Network-based approach to identify potential targets and drugs that promote neuroprotection and neurorepair in acute ischemic stroke. *Sci. Rep.* 7:40137. doi: 10.1038/srep40137
- Wishart, D. S., Knox, C., Guo, A. C., Cheng, D., Shrivastava, S., Tzur, D., et al. (2008). DrugBank: a knowledgebase for drugs, drug actions and drug targets. *Nucleic Acids Res* 36, D901–D906. doi: 10.1093/nar/gkm958
- World Health Organization (2017). *The Top 10 Causes of Death [Online]*. Available online at: <http://www.who.int/mediacentre/factsheets/fs310/en/> (Accessed Jun 5, 2017).
- Xie, C., Mao, X., Huang, J., Ding, Y., Wu, J., Dong, S., et al. (2011). KOBAS 2.0: a web server for annotation and identification of enriched pathways and diseases. *Nucleic Acids Res.* 39, W316–W322. doi: 10.1093/nar/gkr483
- Xu, H. Y., Shi, Y., Zhang, Y. Q., Jia, Q., Li, D. F., Zhang, Y., et al. (2016). Identification of key active constituents of Buchang Naoxintong capsules with therapeutic effects against ischemic stroke by using an integrative pharmacology-based approach. *Mol. Biosyst.* 12, 233–245. doi: 10.1039/C5MB00460H
- Yamashita, T., Sasaki, N., Kasahara, K., and Hirata, K. (2015). Anti-inflammatory and immune-modulatory therapies for preventing atherosclerotic cardiovascular disease. *J. Cardiol.* 66, 1–8. doi: 10.1016/j.jjcc.2015.02.002
- Yan, A. G., Liu, J. X., Li, X. Z., Dong, X. X., and Li, H. K. (2015). Effect of Gualou Xiebai Banxia decoction combined with Xuefu Zhuyu decoction on myocardial apoptosis and relevant protein expressions in miniature swine phlegm and blood stasis type coronary heart disease model. *Zhongguo Zhong Yao Za Zhi* 40, 2174–2179. doi: 10.4268/cjmm20151120
- Yan, K. P., Guo, Y., Xing, Z. H., Huang, X., Dai, S. P., Duan, M., et al. (2012). Dan-Shen-Yin protects the heart against inflammation and oxidative stress induced by acute ischemic myocardial injury in rats. *Exp. Ther. Med.* 3, 314–318. doi: 10.3892/etm.2011.404
- Yang, J., and Wang, M. Q. (2012). The research course and the perspective of molecular regulation network and blood stasis syndrome. *Zhongguo Zhong Xi Yi Jie He Za Zhi* 32, 1420–1422.
- Yang, L., Huang, Y., Cai, Y. F., Du, B. X., Xia, C. H., Lv, M., et al. (2004). Distribution and evolution of phlegm and blood stasis syndrome in 1418 stroke patients. *Liaon. J. Tradit. Chin. Med.* 31, 459–460. doi: 10.13192/j.ljtc.2004.06.19.yangl.012
- Ye, H., Ye, L., Kang, H., Zhang, D., Tao, L., Tang, K., et al. (2011). HIT: linking herbal active ingredients to targets. *Nucleic Acids Res.* 39, D1055–D1059. doi: 10.1093/nar/gkq1165
- Yin, D. K., Liu, Z. Q., Peng, D. Y., Yang, Y., Gao, X. D., Xu, F., et al. (2013). Serum containing Tao-Hong-Si-Wu decoction induces human endothelial cell VEGF production via PI3K/Akt-eNOS signaling. *Evid. Based Complement. Altern. Med.* 2013:195158. doi: 10.1155/2013/195158
- Yin, K., Li, X., and Chen, L. (2007). Atrial fibrillation with coronary heart disease and distribution rule of TCM syndrome. *Chin. J. Integr. Med. Cardio Cerebrovasc. Dis.* 5, 1163–1165. doi: 10.3969/j.issn.1672-1349.2007.12.001
- Yue, S. J., Xin, L. T., Fan, Y. C., Li, S. J., Tang, Y. P., Duan, J. A., et al. (2017). Herb pair Danggui-Honghua: mechanisms underlying blood stasis syndrome by system pharmacology approach. *Sci. Rep.* 7:40318. doi: 10.1038/srep40318
- Zaman, A. G., Helft, G., Worthley, S. G., and Badimon, J. J. (2000). The role of plaque rupture and thrombosis in coronary artery disease. *Atherosclerosis* 149, 251–266. doi: 10.1016/S0021-9150(99)00479-7
- Zhang, G. B., Li, Q. Y., Chen, Q. L., and Su, S. B. (2013). Network pharmacology: a new approach for chinese herbal medicine research. *Evid. Based Complement. Alternat. Med.* 2013:621423. doi: 10.1155/2013/621423
- Zhang, H. M., Tang, D. L., Tong, L., Sun, M. J., Sui, Y., Zhu, H. Y., et al. (2011). Gualou Xiebai Banxia Decoction (sic) Inhibits NF-kappa B-dependent inflammation in Myocardial Ischemia-reperfusion injury in rats. *J. Tradit. Chin. Med.* 31, 338–343. doi: 10.1016/S0254-6272(12)60015-6
- Zhang, M., Liang, D. H., and Li, X. M. (1995). A study on relationship between balance of serum lipoprotein and the phlegm damp-blood stasis syndrome differentiation of coronary heart diseases. *Zhongguo Zhong Xi Yi Jie He Za Zhi* 15, 9–12.
- Zhang, M., Liang, D., and Zeng, Z. (1999). Exploring into relationship between serum lipoprotein electrophoretogram and the differentiation as phlegm stasis syndrome of aged coronary heart disease patients. *Zhongguo Zhong Xi Yi Jie He Za Zhi* 19, 155–158.
- Zhang, Q., Yu, H., Qi, J., Tang, D., Chen, X., Wan, J. B., et al. (2017). Natural formulas and the nature of formulas: exploring potential therapeutic targets based on traditional Chinese herbal formulas. *PLoS ONE* 12:e0171628. doi: 10.1371/journal.pone.0171628
- Zhao, G. H. (2009). *The Relationship Between c-reactive Proteinmediated Lipid Disorders and Phlegm Stasis Syndrome of Coronary Heart Disease*. Liaoning University of Traditional Chinese Medicine.
- Zhao, L., Wan, L., Qiu, X., Li, R., Liu, S., and Wang, D. (2014). A metabolomics profiling study on phlegm syndrome and blood-stasis syndrome in coronary heart disease patients using Liquid Chromatography/Quadrupole Time-of-flight mass spectrometry. *Evid. Based Complement. Alternat. Med.* 2014:385102. doi: 10.1155/2014/385102
- Zhao, Y. F., He, L. Y., Liu, B. Y., Li, J., Li, F. Y., Huo, R. L., et al. (2014). Syndrome classification based on manifold ranking for viral hepatitis. *Chin. J. Integr. Med.* 20, 394–399. doi: 10.1007/s11655-013-1659-4
- Zhou, B., Chen, F., Zhong, W., Liu, X., and Li, S. (2010). Research the control effect of injury caused ischemia myocardium on liquor Gualouxiebai decoction from the change of NO and NOS. *Acta Chin. Med. Pharmacol.* 38, 36–38. doi: 10.3969/j.issn.1002-2392.2010.03.013
- Zhou, W., and Wang, Y. (2014). A network-based analysis of the types of coronary artery disease from traditional Chinese medicine perspective: Potential for therapeutics and drug discovery. *J. Ethnopharmacol.* 151, 66–77. doi: 10.1016/j.jep.2013.11.007
- Zhou, W., Wang, J., Wu, Z., Huang, C., Lu, A., and Wang, Y. (2016). Systems pharmacology exploration of botanic drug pairs reveals the mechanism for treating different diseases. *Sci. Rep.* 6:36985. doi: 10.1038/srep36985
- Zhou, X., Li, Y., Peng, Y., Hu, J., Zhang, R., He, L., et al. (2014a). Clinical phenotype network: the underlying mechanism for personalized diagnosis and treatment of traditional Chinese medicine. *Front. Med.* 8, 337–346. doi: 10.1007/s11684-014-0349-8
- Zhou, X., Menche, J., Barabasi, A. L., and Sharma, A. (2014b). Human symptoms-disease network. *Nat. Commun.* 5, 4212. doi: 10.1038/ncomms5212
- Zhu, F., Shi, Z., Qin, C., Tao, L., Liu, X., Xu, F., et al. (2012). Therapeutic target database update 2012: a resource for facilitating target-oriented drug discovery. *Nucleic Acids Res.* 40, D1128–D1136. doi: 10.1093/nar/gkr797
- Zou, Z. J., Han, B., Gong, M. J., Wang, S. M., and Liang, S. W. (2014). NMR-based metabolomic studies on stomach heat and cold syndromes and intervention effects of the corresponding formulas. *Evid. Based Complement. Altern. Med.* 2014:528396. doi: 10.1155/2014/528396

Conflict of Interest Statement: The authors declare that the research was conducted in the absence of any commercial or financial relationships that could be construed as a potential conflict of interest.

Copyright © 2018 Xu, Yang, Jiang, Hu and Zhou. This is an open-access article distributed under the terms of the Creative Commons Attribution License (CC BY). The use, distribution or reproduction in other forums is permitted, provided the original author(s) or licensor are credited and that the original publication in this journal is cited, in accordance with accepted academic practice. No use, distribution or reproduction is permitted which does not comply with these terms.