



Lack of Effects of Metformin and AICAR Chronic Infusion on the Development of Hypertension in Dahl Salt-Sensitive Rats

Tengis S. Pavlov^{1,2*}, Vladislav Levchenko¹, Daria V. Ilatovskaya¹, Hui Li³, Oleg Palygin¹, Nuria M. Pastor-Soler³, Kenneth R. Hallows³ and Alexander Staruschenko¹

¹ Department of Physiology, Medical College of Wisconsin, Milwaukee, WI, USA, ² Division of Hypertension and Vascular Research, Henry Ford Hospital, Detroit, MI, USA, ³ Division of Nephrology and Hypertension, Department of Medicine, Keck School of Medicine, University of Southern California, Los Angeles, Los Angeles, CA, USA

OPEN ACCESS

Edited by:

Michelle L. Gumz,
University of Florida, USA

Reviewed by:

Diego Alvarez de la Rosa,
University of La Laguna, Spain
Mouhamed S. Awayda,
University at Buffalo, USA

*Correspondence:

Tengis S. Pavlov
tpavlov1@hfw.org

Specialty section:

This article was submitted to
Renal and Epithelial Physiology,
a section of the journal
Frontiers in Physiology

Received: 16 January 2017

Accepted: 31 March 2017

Published: 20 April 2017

Citation:

Pavlov TS, Levchenko V,
Ilatovskaya DV, Li H, Palygin O,
Pastor-Soler NM, Hallows KR and
Staruschenko A (2017) Lack of Effects
of Metformin and AICAR Chronic
Infusion on the Development of
Hypertension in Dahl Salt-Sensitive
Rats. *Front. Physiol.* 8:227.
doi: 10.3389/fphys.2017.00227

In the kidney, reabsorption via the epithelial sodium channel (ENaC) is involved in long-term blood pressure control. Previously we demonstrated that ENaC hyperactivity is associated with development of salt-sensitive (SS) hypertension in Dahl SS rats. AMP-activated kinase (AMPK), playing a role in cellular energy homeostasis, has been shown to decrease ENaC activity. Here, we tested whether metformin and AICAR, two drugs that activate AMPK, affect the development of salt-induced hypertension. High salt diet significantly increased mean arterial pressure (MAP) in Dahl SS rats. Blood pressure elevation was accompanied by a short-term decline of heart rate and increased circadian arterial pressure dipping. Metformin and AICAR were delivered intravenously at doses of 200 and 20 mg/kg/day, respectively. However, both control and drug-treated groups had similar development of high blood pressure within 3 weeks of 8% NaCl dietary salt intake. In the metformin-treated animals MAP reached 164.9 ± 9.1 mmHg, which was not significantly different from the control group (171.8 ± 5.6 mmHg). Patch clamp analysis revealed that the metformin-treated rats had no difference in the activity of ENaC. AICAR treatment also did not affect the development of hypertension and kidney injury. MAP reached 182.8 ± 4.8 and 178.0 ± 2.8 mmHg in AICAR and vehicle treated groups, respectively. Of note, we found that high-salt diet activated AMPK in the Dahl SS rats, and treatment with these AMPK activators had no significant further effect on AMPK activity. We conclude that AMPK activators, at least under these conditions, do not affect development of hypertension during high-salt diet in the Dahl SS rat model.

Keywords: hypertension, salt sensitivity, AMPK, metformin, AICAR, ENaC, blood pressure

INTRODUCTION

Activators of 5'-AMP-activated protein kinase (AMPK) are widely used for treatment of metabolic disorders, type 2 diabetes, heart disease, anti-proliferative therapy and sports medicine. AMPK, a heterotrimeric serine/threonine protein kinase, is activated in response to reduced intracellular ATP to AMP ratio and controls numerous metabolic pathways. Activation of this kinase improves glucose uptake, fatty acid oxidation and insulin sensitivity in skeletal muscles, carbohydrate and

lipid metabolism in liver and adipocytes, and release of insulin by pancreatic β cells (Long and Zierath, 2006).

A variety of medications work through AMPK and its downstream pathways. For instance, the biguanide drug metformin, in use since the 1950s, is a very effective agent for the treatment of type 2 diabetes, insulin resistant states, pre-diabetes, and cancer (Rojas and Gomes, 2013). Metformin acts primarily in the liver by reducing glucose output and, secondarily, by augmenting skeletal myocyte glucose uptake. Many mechanisms are involved in the beneficial effects of metformin on cellular metabolism; the activation of an upstream kinase, liver kinase B1 (LKB1), increased cellular AMP levels, and consequent AMPK activation are considered to be key mechanisms for the action of this drug (Zhou et al., 2001; Grahame Hardie, 2014).

Another example of AMPK axis targeting medications is AICAR (5-amino-4-imidazole carboxamide ribonucleoside), an AMP-mimetic and AMPK-regulating agent that is currently being investigated for the treatment of metabolic syndrome and as an ischemic preconditioning agent. Intravenous AICAR administration reduces hepatic glucose output, inhibits whole body lipolysis and lowers blood glucose concentrations in type 2 diabetic patients (Boon et al., 2008). Moreover, AICAR has a prominent effect on skeletal muscles, enhancing glucose uptake, training adaptation, and increasing endurance (Narkar et al., 2008). Finally, pre- and peri-operative AICAR infusion in patients undergoing coronary artery bypass graft surgery reduces early cardiac death, myocardial infarction, and combined adverse cardiovascular outcomes (Mangano, 1997).

Altered sodium metabolism is a consistent finding in diabetes, and it is present even in the absence of overt renal or cardiac disease. Both insulin-dependent and non-insulin-dependent diabetic individuals have been reported to have a significant increase of total exchangeable sodium relative to non-diabetic controls (O'hare et al., 1985; Bickel et al., 2002). In cultured cells, AMPK was shown to regulate renal epithelial currents mediated by ENaC (Bhalla et al., 2006), ROMK (Siraskar et al., 2013), and CFTR (Takiar et al., 2011). Analysis of renal function in mice with genetic deletion of the AMPK α_1 catalytic subunit showed normal renal sodium handling and a moderate antidiuretic state that might indicate a compensatory upregulation in α_2 subunit. A renal epithelium-specific knock down of α_2 subunit in the α_1 knockout strain was accompanied by reduced renal AMPK activity and a moderate salt/water wasting phenotype on normal and high salt diets (Lazo-Fernández et al., 2017).

The Dahl salt-sensitive rat strain is a well-established model for studies of the NaCl-dependent type of hypertension. This model recapitulates many traits of the human form of salt-sensitive hypertension: suppressed plasma renin activity, lower circulating aldosterone concentration, increased vascular resistance, impaired pressure-natriuresis response, and decreased venous compliance (Rapp, 1982; Rapp et al., 1989; Sullivan, 1991; Cowley, 1997; Hall, 2016). A hallmark of Dahl SS rats is the rapid progression of hypertension in response to high-NaCl diet. Typical experimental protocols utilizing 4 or 8% NaCl chow induce a substantial rise in blood pressure (BP) within 2–3 weeks after the change of diet.

Sodium reabsorption via ENaC in the aldosterone-sensitive distal nephron (ASDN) is one of the major factors that regulate natriuresis and water-electrolyte balance in the organism. In pathological conditions, increased ENaC activity is associated with improper sodium handling, edema, excessive fluid retention, and hypertension. For instance, hypertension is typical for patients with Liddle's syndrome caused by gain-of-function mutations in ENaC (Hansson et al., 1995). We and others have shown that in Dahl SS rats abnormal activation of ENaC on a high salt diet contributes to the development of hypertension (Kakizoe et al., 2009; Pavlov et al., 2013; Pavlov and Staruschenko, 2016).

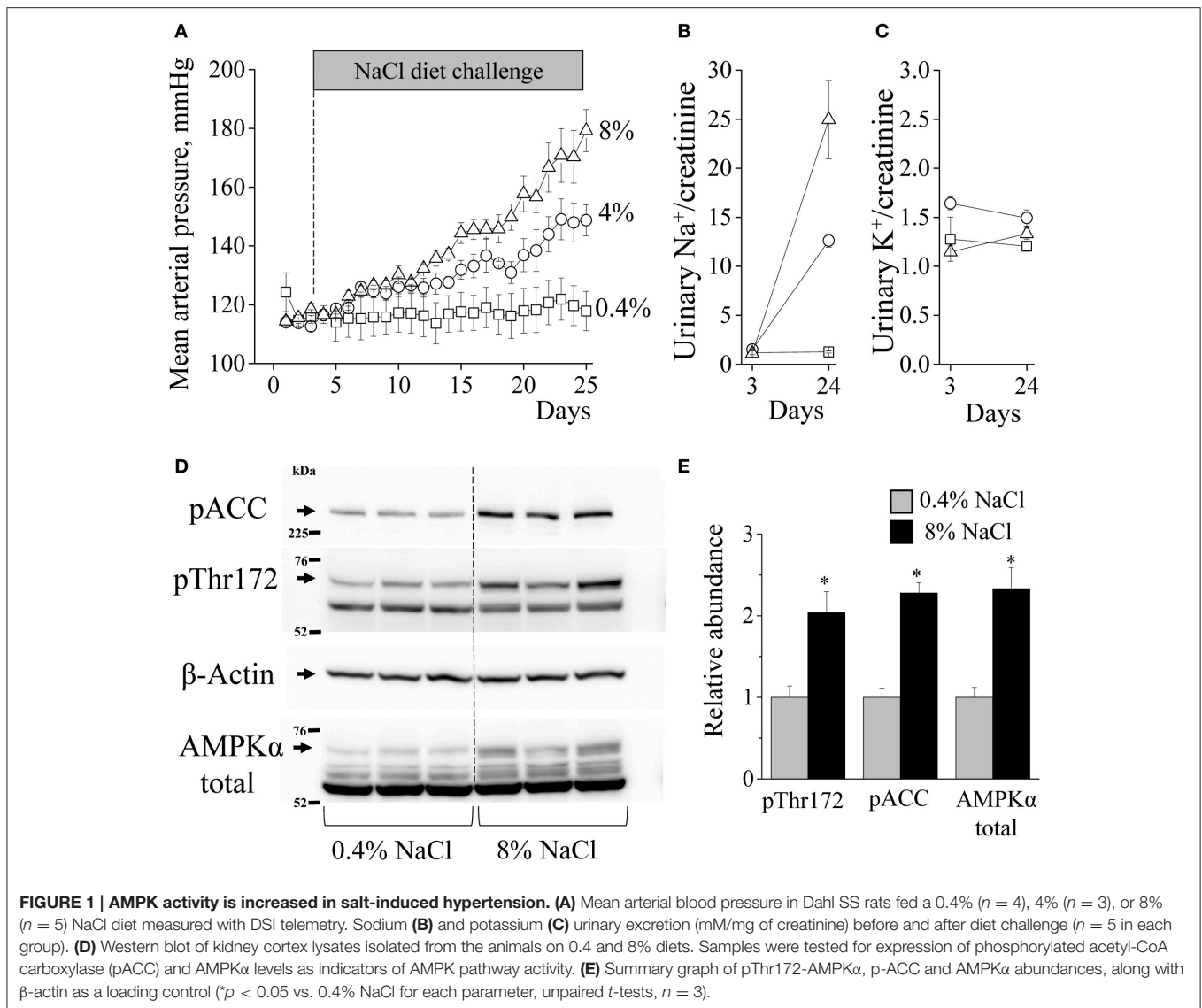
It is currently unclear whether AMPK activators may be beneficial in the treatment of salt-sensitive hypertension. Experiments on airway tissue cultures reveal that ENaC-dependent short-circuit currents are substantially inhibited by AMPK activation (Woolhead et al., 2007; Myerburg et al., 2010). Zhang and colleagues did not find any effects of metformin on salt-induced hypertension in Dahl SS rats (Zhang et al., 1994). However, in later studies intracerebroventricular administration of metformin was found to prevent salt-induced blood pressure increase in the spontaneously hypertensive rat (SHR) model (Petersen et al., 2001). Recently, Yu et al. demonstrated that chronic administration of caffeine augments AMPK activity in Dahl SS rats and attenuates hypertension via a decrease of ENaC activity in the ASDN and improved natriuresis (Yu et al., 2016). In the current study, we used chronic intravenous metformin and AICAR treatments to test how these AMPK activators affect the development of SS hypertension and ENaC activity in Dahl SS rats.

METHODS

Animals and Surgery

Experiments were performed on Rapp Dahl salt-sensitive (SS) rats (SS/JrHsdMcowi) bred at the Medical College of Wisconsin. Animal use and welfare procedures adhered to the National Institutes of Health Guide for the Care and Use of Laboratory Animals following protocols reviewed and approved by the Medical College of Wisconsin Institutional Animal Care and Use Committee. At the age of 7.5 weeks the rats were anesthetized with inhalation of 2.5% isoflurane in 0.5 l/min O₂ flow. We used two approaches to register blood pressure. To study effects of salt intake (**Figure 1**), DSI telemeters (#TA11 PA-C40, Data Sciences International, St. Paul, MN) were installed in femoral arteries and affixed in a subcutaneous pocket in the loin area. Animals in individual cages were placed on an RPC-1 Transceiver interfaced via PhysioTel controller to computer equipped with the Ponemah software package.

For the experiments with drug infusion (**Figures 2–6**), catheters (#RPT080 Braintree, MA) were implanted in the femoral artery and vein, tunneled subcutaneously, and exteriorized at the back of the neck in a lightweight tethering spring (Moreno et al., 2007; Pavlov et al., 2013). Following recovery from anesthesia, all rats were placed into individual stainless steel cages that permit daily measurement of arterial blood pressure. The catheters were connected to pressure



transducer (#041516504A, Argon Medical Devices, Plano, TX) via swivels (#375/D/22 Instech, Plymouth Meeting, PA) for arterial blood pressure acquisition and intravenous drug infusion with the syringe pump (10 ml/day). The rats were allowed to recover for at least 3 days following surgery.

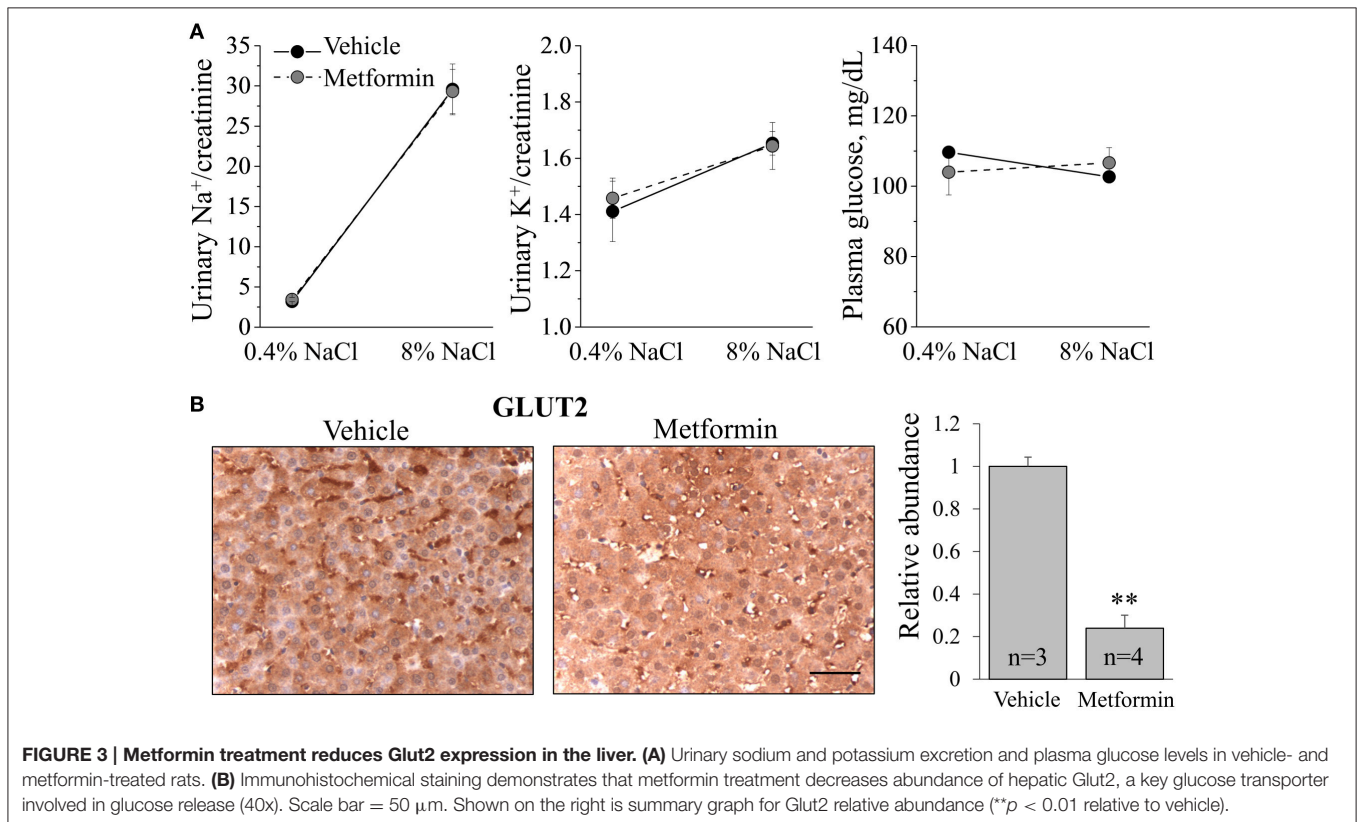
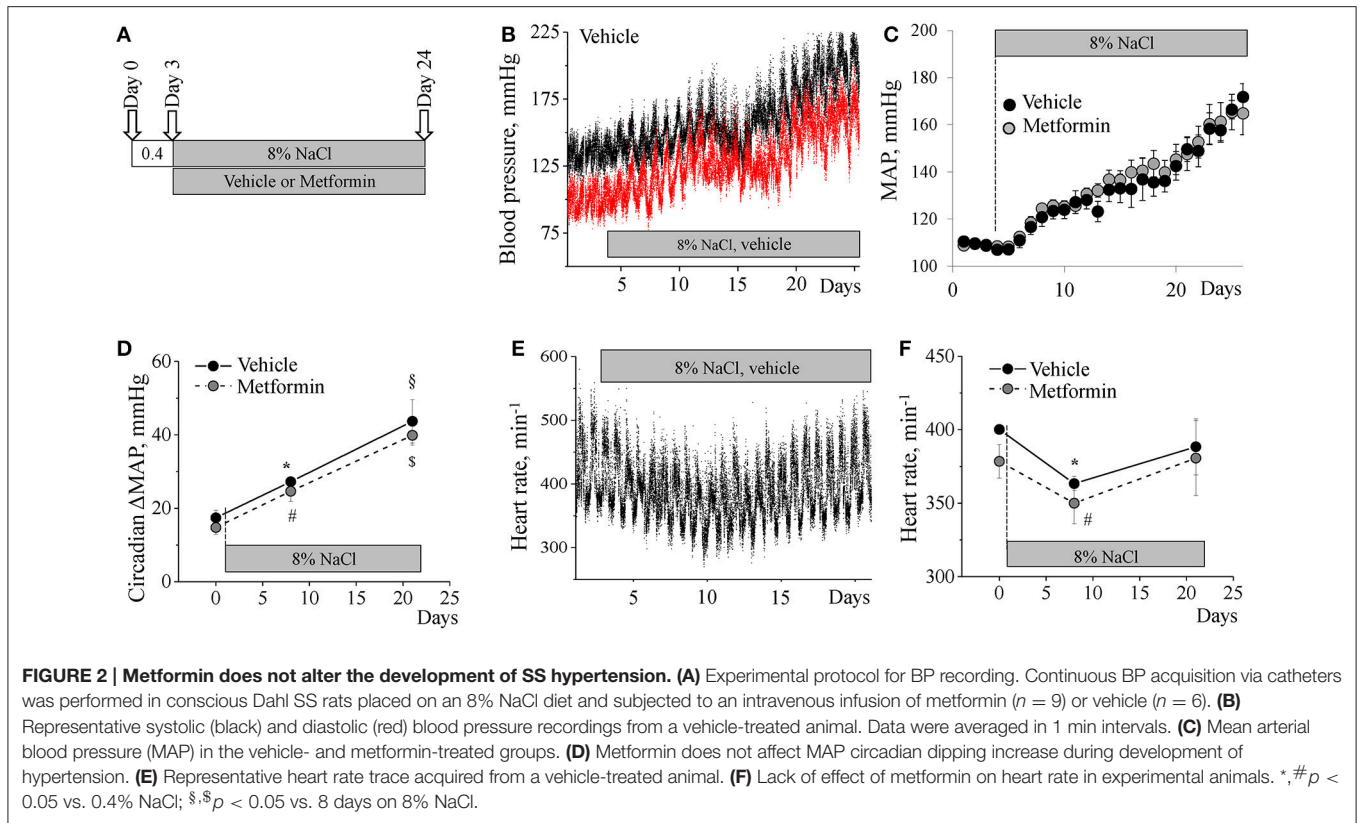
Experimental Protocol

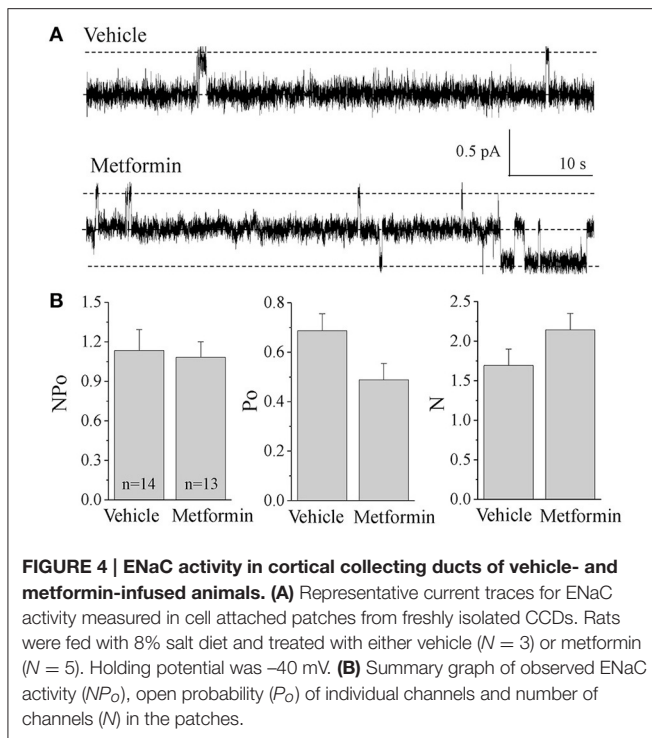
After the recovery period, blood pressure measurements were obtained continuously for the duration of the experiment. Plotted mean arterial pressure (MAP) data represent mean measurements from 9:00 a.m. to 12:00 p.m. as described previously (Pavlov et al., 2013). 20 mg/kg/day of AICAR or 200 mg/kg/day metformin (Tocris, Minneapolis, MN) administration was performed with continuous infusion at a rate of 6.9 μ L/min through the venous catheter in saline, which was also used as a vehicle. After 3 days recovery when animals were fed a normal 0.4% NaCl diet, rats were switched to a 4 or 8% NaCl diet for 3 weeks (Dyets, Bethlehem, PA). Urine samples were collected during infusion experiments and Na⁺, K⁺, protein, and

creatinine levels were analyzed as previously described (Pavlov et al., 2016). Blood was collected during the experiment with bleeds from the arterial catheters on conscious rats while resting, and plasma glucose level was then measured with a Contour strip glucometer (Bayer, Mishawaka, IN). At the end of the protocols, the kidneys of rats were perfused (6 ml/min) through the distal aorta with saline to clear them from blood, and then the renal tissues were collected for further analyses (Pavlov et al., 2015a).

Western Blot

Kidney cortical lysates were prepared as follows. Renal cortices were excised rapidly and snap frozen in liquid nitrogen. Lysates were prepared using a Dounce homogenizer in lysis buffer [containing 20 mM Tris-HCl pH 7.4, 50 mM NaCl, 50 mM NaF, 5 mM Na-pyrophosphate, 250 mM sucrose, 1% Triton X-100, 1 mM DTT, 1 mM PMSF, and complete protease inhibitor cocktail (Roche)]. Homogenates were centrifuged at 16,000 \times g for 30 min at 4°C, and the protein concentration in the supernatants was measured using the Bradford technique (Bio-Rad protein





assay kit). Samples were separated by Nu-PAGE 4–12% gradient gels and electrically transferred to a polyvinylidene difluoride (PVDF) membrane (Bio-Rad). Membranes were cut horizontally at about 50 and 100 kDa to make three sections for probing. The top was probed for pACC. The middle was probed for pThr172-AMPK α . The bottom was probed for β -actin. The middle part was then stripped and reprobed for total AMPK α . We had similar results when we probed for AMPK-alpha first and then stripped and reprobed for pThr172-AMPK α (Li et al., 2015; Al-Bataineh et al., 2016). The membranes were blocked in 5% milk for 1 h and then incubated with primary antibodies in 5% BSA overnight at 4°C. After washes in TBS 0.05% Tween 20, the membrane was incubated with either goat anti-mouse or anti-rabbit secondary antibodies for 1 h at room temperature. Immunoreactive proteins were detected by the Versa-Doc imaging system (Bio-Rad). Quantification of Western blot bands was performed by densitometry using Quantity One software (Bio-Rad).

Antibodies

Antibodies directed against AMPK- α , AMPK- α -phospho-Thr172, and ACC1-phospho-Ser79 (acetyl coenzyme A) were all obtained from Cell Signaling Technology (#2532, 2531, and 3661, Danvers, MA) and applied in dilution 1:1,000 as previously described (Li et al., 2015; Al-Bataineh et al., 2016). Anti- β -actin antibody was obtained from Sigma (A1978, St. Louis, MO; Pastor-Soler et al., 2015).

Histochemistry

Formalin-fixed kidney sections were cut at 4 μ m slices, dried and deparaffinized for subsequent streptavidin-biotin

immunohistochemistry. After deparaffinization, the slides were treated with a citrate buffer (pH 6) for a total of 35 min. The slides were blocked with a peroxidase block (DAKO, Carpinteria, CA, USA), Avidin Block (Vector Labs, Burlingame, CA, USA), Biotin Block (Vector Labs), and serum-free Protein Block (DAKO). For kidney damage analysis, the tissue was stained with Masson's trichrome. For Glut2 staining, liver sections were embedded in one paraffin block for tissue microarrays and slices were incubated 1:200 overnight with anti-Glut2 antibodies (#sc-9117, Santa Cruz Biotech, Dallas, TX). Secondary detection was performed with Goat anti-Rabbit biotinylated IgG (Biocare, Concord, CA, USA) followed by Streptavidin HRP (Biocare) and visualized with Diaminobenzadine (DAB, DAKO). ImageJ software was used to assess intensity of Glut2 staining in hepatocytes. Average signal levels in 10 areas in each liver were measured, and background (counterstained samples treated with secondary antibodies) was subtracted.

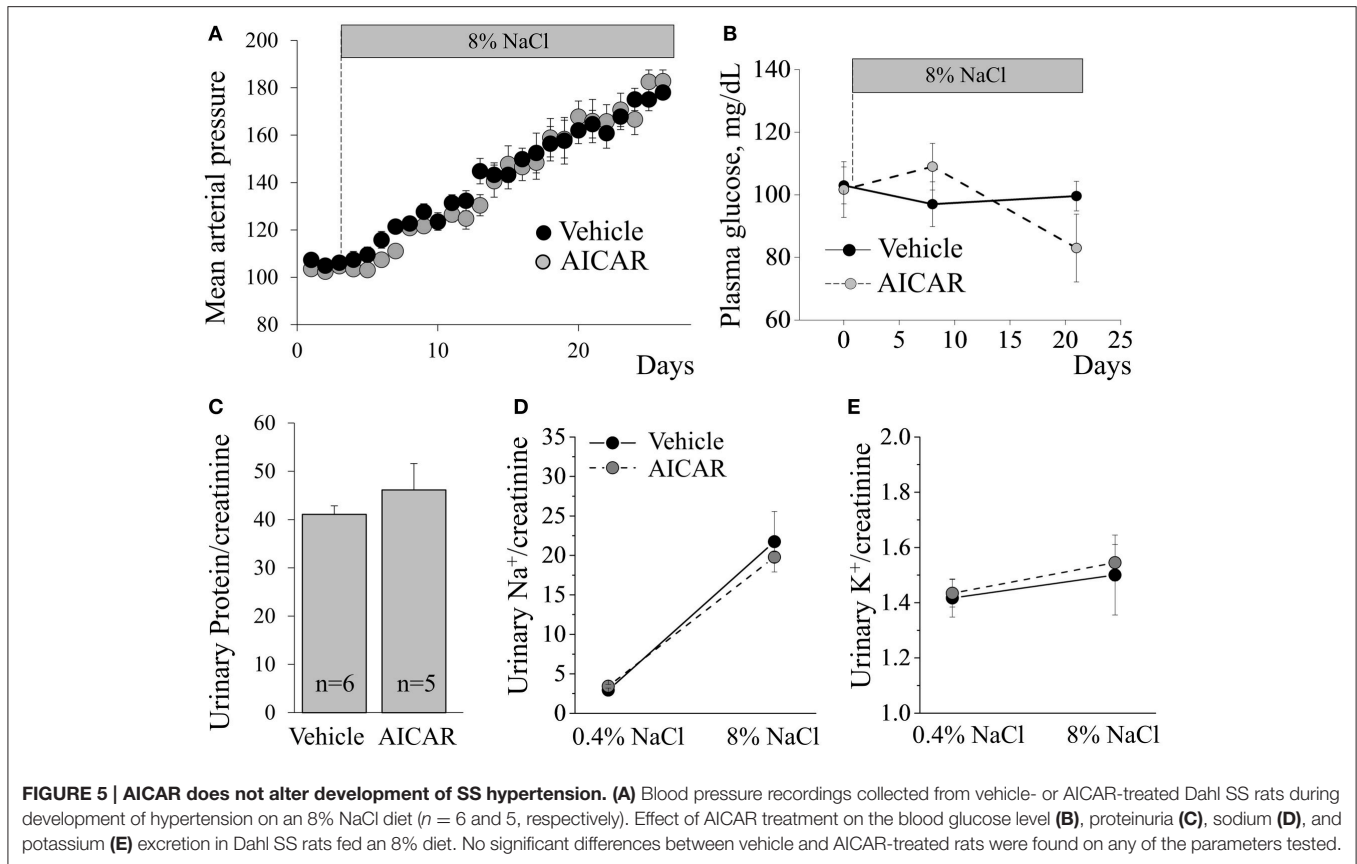
Electrophysiology

Patch-clamp electrophysiology was used to assess ENaC activity in isolated, split-open rat cortical collecting duct (CCD). CCDs were isolated from Dahl SS rats as described previously (Pavlov et al., 2013, 2015b). Kidneys were cut into thin slices (<1 mm) then placed into ice-cold physiologic saline solution (pH 7.4). Collecting ducts were mechanically isolated from these slices by micro-dissection using forceps under a stereomicroscope. CCDs were split open with sharpened micropipettes controlled with micromanipulators to gain access to the apical membrane.

Single-channel data were acquired using Axopatch 200B or 700B amplifiers (Molecular Devices, Sunnyvale, CA, USA) interfaced via a Digidata 1440 to a PC running pClamp suite software (Molecular Devices). When signals were acquired with an Axopatch 200B amplifier, currents were filtered with an 8-pole, low pass Bessel filter LPF-8 (Warner Inst., Hamden, CT) at 0.2 kHz. The pipette was pulled with a horizontal puller (Sutter P-97; Sutter Inst., Novato, CA). The resistance of the pipette in the corresponding bath medium was 7–12 M Ω . Typical bath solution was (in mM): 150 NaCl, 1 CaCl₂, 2 MgCl₂, 10 HEPES (pH 7.4). Pipette solution for the cell-attached configuration was (in mM): 140 LiCl, 2 MgCl₂ and 10 HEPES (pH 7.4). Gap-free single channel current data from gigaohm seals in principal cells were acquired and subsequently analyzed with Clampfit 10.2 software (Molecular Devices). NP_o , the product of the number of channels (N) and the open probability (P_o), was used to measure the channel activity within a patch. Single-channel unitary current (i) was determined from the best-fit Gaussian distribution of amplitude histograms. Channel activity was analyzed as $NP_o = I/i$, where I is mean total current in a patch and i is the unitary current at this voltage. Where appropriate, P_o was calculated by normalizing NP_o for the total number of estimated channels in the patch.

Statistics

All summarized data are reported as mean \pm SEM. Data were compared using one-way ANOVA or Wilcoxon signed-rank test in case of dependent values; $P < 0.05$ was considered significant.



RESULTS

Salt-Induced Blood Pressure Elevation Is Associated with AMPK Activation

Dahl SS rats are known to develop hypertension when fed a high-salt diet (Rapp, 1982). First, we confirmed this effect using the DSI telemetry to monitor blood pressure in the rats fed 0.4, 4, or 8% NaCl diets between 8 and 11 weeks of age. The experiment revealed that during the 3-week period the 0.4% diet does not alter blood pressure, whereas the 4% diet raised MAP, and the 8% diet augmented the development of hypertension (**Figure 1A**). High NaCl diets increased sodium excretion proportionally to sodium content in the chow whereas potassium excretion remained stable, suggesting that food intake was similar on all diets (**Figures 1B,C**). While 4% diet represents a widely used dietary challenge, 8% diet had more profound and faster effects on blood pressure. Therefore, we used 8% in our subsequent experiments. At the end of the experiments, kidney samples were collected for the assessment of protein expression. No significant differences in terminal total body weights were found: average mass was 325.7 ± 9.7 (0.4% NaCl) vs. 308.5 ± 1.3 g (8% NaCl).

Western blot analysis in kidney cortex samples with antibodies that probe both α_1 and α_2 AMPK forms (559 and 552 amino acids length, respectively) detect four major immunoreactive bands (**Figure 1D**). Earlier, it was shown in rat liver tissue that the AMPK α signal might migrate as doublets. The authors

also demonstrated that inactivation of AMPK α resulted in a shift in the migration of the upper band of the doublet to that of the lower band indicating that the two bands represent different phosphorylation states of the same enzyme and that activation is accompanied by a shift to higher bands (Carling et al., 1994). Our further investigations revealed similar forms of AMPK α which degrade in the renal tissues of AMPK β_1 knockout mice (Christensen et al., 2016). In the current study, high-salt diet causes increased activation of AMPK pathway in the renal cortex. 8% NaCl diet significantly increased both total AMPK α subunit abundance and phosphorylation of the Thr172 residue in the “activation loop” of AMPK α subunit (Stein et al., 2000). Phosphorylation of acetyl-CoA carboxylase (ACC), an immediate downstream effector and canonical target of AMPK, was also increased suggesting that high salt intake or high BP increases cortical AMPK activity (**Figures 1D,E**).

Metformin Treatment Does Not Affect Development of Salt-Sensitive Hypertension

We tested whether the AMPK activator metformin affects blood pressure elevation in Dahl SS rats. After catheter implantation, recovery period and an initial 3 day blood pressure acquisition on a 0.4% NaCl diet, an 8% salt supplement along with vehicle or metformin infusion were instituted for an additional 21 day period (**Figure 2A**).

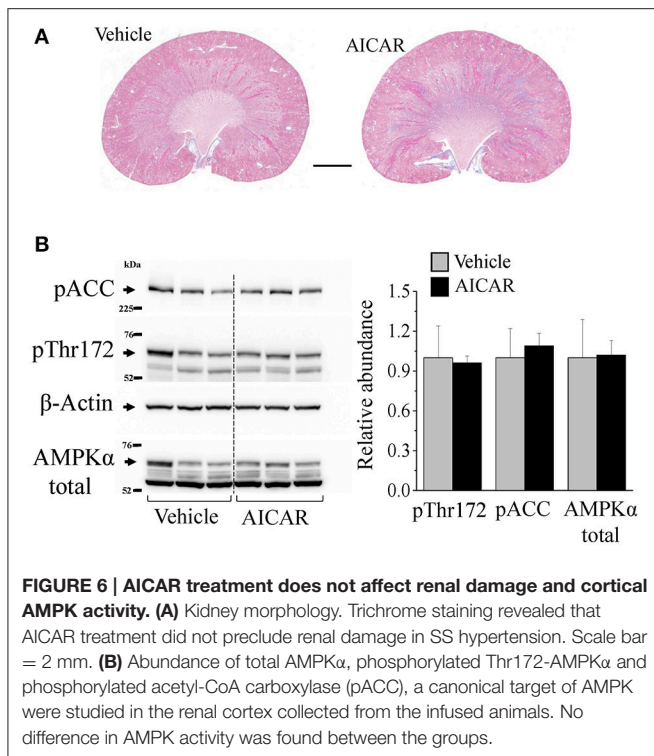


FIGURE 6 | AICAR treatment does not affect renal damage and cortical AMPK activity. (A) Kidney morphology. Trichrome staining revealed that AICAR treatment did not preclude renal damage in SS hypertension. Scale bar = 2 mm. (B) Abundance of total AMPK α , phosphorylated Thr172-AMPK α and phosphorylated acetyl-CoA carboxylase (pACC), a canonical target of AMPK were studied in the renal cortex collected from the infused animals. No difference in AMPK activity was found between the groups.

This high-salt challenge induced development of hypertension within the experimental period. **Figure 2B** shows a representative increase of systolic (black) and diastolic (red) blood pressures in a Dahl SS rat infused with vehicle. The BP elevated in two phases. The first stage was characterized by a sharp increase occurring over 1–8 days after the change of diet with an increase in MAP by ~ 21 mmHg. Then BP rose slowly by ~ 8 mmHg over 8–14 days from the switch in diet. Finally, during the 3rd week after switching to a high-salt diet there was a second acute phase when MAP rapidly rose up to 171.8 ± 5.6 mmHg (**Figure 2C**, black dots).

Development of hypertension was also accompanied with an increasing circadian BP dipping response: the difference between day/night MAP on a low-salt diet was 17.4 ± 2.1 mmHg whereas on a high-salt diet this value rose to 27.2 ± 0.8 mmHg on day 8 and 43.6 ± 5.9 mmHg by the end of experiment (**Figure 2D**). We also observed a temporary significant drop in heart rate after switching the diet, which recovered by day 21 (**Figures 2E,F**).

Metformin treatment in the high-sodium treated animals had no influence on the pattern of hemodynamic changes: neither MAP, circadian dipping, nor heart rate differed between vehicle- and metformin-treated groups (**Figures 2C,D,F**). During the experiment, sodium and potassium urinary excretion, plasma glucose level (**Figure 3A**) as well as total body weight at the end of the experiment (303.8 ± 12.5 vs. 309.6 ± 13.8 g) did not differ between the groups.

Metformin Decreases Abundance of Glut2 Transporter in the Liver

Metformin is well-known to modulate cellular metabolism in different tissues. Glut2 is a glucose transporter that mediates

diffusive glucose transport through the plasma membrane in a variety of tissues (Thorens, 2015). To confirm that the infusion of metformin reached its targets and had functional effects, we assessed Glut2 expression in liver tissue collected after vehicle and metformin treatment. Immunohistochemistry assays revealed that metformin dramatically decreased the abundance of Glut2 in hepatocytes (**Figure 3B**). Therefore, 200 mg/kg/day intravenous metformin infusion had functional consequences in this rat model, altering Glut2 expression and presumably liver metabolic function.

Lack of Effect of Metformin on ENaC Activity

We recently demonstrated that high ENaC activity contributes to the development of hypertension in Dahl SS rats (Pavlov et al., 2013). We and others have shown that the AMPK pathway regulates ENaC activity in cultured cells and *in vivo* (Carattino et al., 2005; Almaça et al., 2009; Myerburg et al., 2010), although it is unclear whether this mechanism is functional in the Dahl SS rats. Therefore, here we studied whether the AMPK activator metformin has an effect on the activity of ENaC in the experiments described above in this important animal model of hypertension. CCDs were manually isolated immediately after organ collection, and patch-clamp analysis was performed on split-open tubules to assess channel activity. **Figure 4A** demonstrates representative ENaC current traces recorded from the apical membrane of vehicle- and metformin-treated Dahl SS rats. The analysis did not reveal any significant differences in total ENaC activity (NP_o), open probability of individual channels (P_o) or the number of channels (N) observed in patches (**Figure 4B**). Therefore, in this rat model of hypertension, metformin treatment does not decrease ENaC activity.

AICAR Treatment Does Not Affect Development of Salt-Sensitive Hypertension

Considering the lack of effect of metformin on blood pressure elevation in Dahl SS rats, we tested whether another AMPK-activating pharmacological agent, AICAR, attenuates high blood pressure. Similarly, we found that 20 mg/kg/day continuous AICAR administration had no effect on the development of hypertension (**Figure 5A**). Analysis of the plasma samples collected via arterial catheters revealed that both vehicle- and AICAR-infused animals were euglycemic during the experiment (**Figure 5B**). By the end of the study, both groups demonstrated significant proteinuria, and neither sodium, potassium, total urine (73 ± 1.2 vs. 72.5 ± 8.4 ml/day) excretion, nor total body weight (288.4 ± 14.7 vs. 306 ± 7.3 g) differed between the two groups (**Figures 5C–E**). Histological analysis revealed massive abundance of protein casts, indicating kidney damage in the renal tissues in both groups (**Figure 6A**). The abundances of p-ACC, pThr172-AMPK α and total AMPK α , markers of AMPK pathway activity, in the cortex of AICAR-treated animals were similar to those of the control group as tested by Western blotting (**Figure 6B**).

DISCUSSION

AMPK activators have proven themselves to be useful drugs for metabolic disorders, including those associated with high blood pressure. Recently, Lazo-Fernández and colleagues determined that systemic knockout of $\alpha 1$ combined with kidney epithelium-specific deletion of $\alpha 2$ AMPK subunits led to a water and salt wasting phenotype in mice. The authors also suggested that activity of NKCC2, which serves as a substrate for phosphorylation by AMPK, might be reduced with AMPK targeting (Lazo-Fernández et al., 2017). Another example of the effect of AMPK on the renal concentrating ability in normal animals comes from experiments on kidney slices isolated from Sprague Dawley rats where AICAR treatment decreased apical membrane localization of AQP2, which could have a diluting effect on urine (Al-Bataineh et al., 2016). The current study was aimed at investigating the prospect of targeting AMPK for the treatment of salt-sensitive hypertension. Earlier, it was shown with a precise servo-control of body fluid volume that fluid retention is required to trigger the rise of pressure in Dahl SS rats (Greene et al., 1990).

Four and even 8% sodium chloride diets are commonly used; for instance, it was demonstrated that Dahl SS rats on an 8% NaCl diet had similar plasma sodium and protein levels compared to those on a 0.3% salt diet (and salt-resistant Dahl R rats on 8% diet), whereas their urine flow and sodium excretion rates were significantly higher as measured in pressure-natriuretic response studies (Roman and Kaldunski, 1991; Kakizoe et al., 2009). We have also shown that Dahl SS rats maintain stable plasma sodium and potassium levels when switched to 8% NaCl (Pavlov et al., 2013). We conclude that the rats could tolerate even such a high salt load as 8% NaCl chow when they have unlimited access to fresh water.

In the current study, salt-induced hypertension developed in two phases, early and late, which is typical for Dahl SS rats (Moreno et al., 2011; Evans et al., 2015). We observed an elevation in MAP and a progressive increase in day/night blood pressure dipping in all animals fed a high-salt diet, consistent with earlier findings (Mori et al., 2008; Cowley et al., 2016). In hypertensive and normotensive humans, nocturnal dipping is usually defined as a >10% decline in BP (Henskens et al., 2008) and has an important diagnostic significance: it has been shown that impaired BP dipping is associated with increased risk of cardiovascular events and target organ damage (Ohkubo et al., 2002; De La Sierra et al., 2009). In subjects from African descent, sodium excretory renal function during daytime was found to be a significant determinant of nocturnal BP and dipping (Bankir et al., 2008), whereas salt-resistant normotensive individuals' BP was not blunted on standard and high-sodium diets (Brian et al., 2017). Also, metabolic syndrome is recognized as a predictor of non-dipping hypertension (Tartan et al., 2006), and we expected that targeting AMPK activity might have an effect on circadian dipping in Dahl SS rats. However, in the current study blood pressure elevation was not accompanied by impaired dipping in either vehicle- or drug-treated animals. High-salt diet also substantially increased the activity of AMPK in the kidney cortex as revealed by Western blotting. We further tested whether

treatment with the AMPK activators metformin and AICAR (given via intravenous infusion) affects the development of hypertension.

We showed that metformin infusion at a dose of 200 mg/kg/day reduced Glut2 abundance in hepatocytes, which demonstrated effective delivery and the targeting of liver function by the drug. Glut2 is a bidirectional glucose transporter present in liver, kidney, intestine, and pancreas, which facilitates glucose transit from the interstitium to the cell and vice versa. Studies have shown that Glut2 is overexpressed under diabetic conditions due to the increased glycolysis associated with the enhanced glucose transport (Zhang et al., 2013). Over-expression of Glut2 in hepatic tissue was found in high-fat and fructose-induced type-2 diabetic animals. Anti-diabetic treatment reduced Glut2 expression in high-fat and fructose-induced type-2 rats (Narasimhan et al., 2015).

However, we found a lack of effect of metformin on hypertension development, ENaC activity, and heart rate changes in this animal model. Similarly, earlier studies by Zhang and colleagues have shown that metformin did not affect development of hypertension in Dahl SS rats fed a 3% NaCl diet (Zhang et al., 1994). On the other hand, Yu et al. recently reported that chronic treatment with caffeine, which activated AMPK, increased natriuresis and precluded 8% NaCl salt-induced hypertension. Also, these authors suggested that in cell culture studies this effect of caffeine might be mediated by downregulation of ENaC via AMPK activation, as the caffeine effect was blocked by the putative AMPK inhibitor compound C (Yu et al., 2016). However, these results should be interpreted with caution because compound C is known to have significant off-target effects on a number of other kinases and signaling pathways (Bain et al., 2007). We studied the effect of chronic metformin administration on ENaC activity in the freshly isolated CCD segments of these high-sodium fed animals and did not detect any significant difference in ENaC function as compared to vehicle-treated animals. The lack of effect in our experiments may well be due to our finding that AMPK was already strongly activated following the institution of a high-salt (8% NaCl) diet (**Figure 1**), a finding that is consistent with earlier work in rats fed a high-salt diet (Fraser et al., 2005). Similarly, no further AMPK activation by AICAR infusion, as compared to vehicle, was found in our studies using Dahl SS rats fed a high-salt diet (**Figure 6**). It is therefore conceivable that any potential effect of AMPK activation on the hemodynamic parameters we measured was already maximized even in vehicle-treated animals during this exposure period. It would thus be interesting to examine the potential role of AMPK modulation in other hypertension models where AMPK may not be already activated.

Our study and the investigation by Zhang et al. used metformin at the following doses: 200 mg/kg/day intravenously and a daily dose of 300–350 mg/kg in drinking water, respectively. Metformin is usually used in rats in the 100–300 mg/kg/day range orally or intravenously (Santur e et al., 2000; Choi et al., 2008). In patients with type-2 diabetes, the oral form of metformin is usually given at total doses of 500–2,000 mg daily (Stumvoll et al., 1995; Basu et al., 2008; Takahara et al.,

2012). Interestingly, Santur  and colleagues found that 3 weeks of treatment with metformin improves the glucose disposal in SHR but has no blood pressure-lowering effect and no influence on vascular responses to insulin. In another study, 25–200 µg/day intracerebroventricular administration of metformin to SHR attenuated 8% NaCl diet-induced hypertension; 100–200 mg/kg doses were highly neurotoxic as demonstrated by a histological evaluation post-mortem (Petersen et al., 2001). Together, these considerations and findings suggest that the selection of experimental model, route of administration, and dosage may all be critical for studying the effects of AMPK activators on blood pressure.

The renal effects of AMPK activators have been characterized in less detail than in such systems as skeletal and cardiac muscle or gastrointestinal tract. In our study, we have not observed effects of AICAR infusion on renal salt handling during BP elevation, although high-salt intake itself activated the AMPK pathway even without AICAR treatment, as discussed above. Another factor that could contribute to the observed lack of effect of the AMPK activators on BP might be that the dose was insufficient to target the kidneys. However, 200 mg/kg/day metformin did induce hepatic effects, which suggests the physiological efficacy of this infusion. AICAR is often used at high doses: antidiabetic effects are exhibited at doses of ~1 g/kg/day intravenously in humans (Boon et al., 2008) and rodents (Minokoshi et al., 2002). The safety and kinetics study in healthy men demonstrated that AICAR is poorly bioavailable (<5%) when administered orally in solution; after intravenous injection the elimination phase half-time ($t_{1/2\beta}$) was 1.4 h (Dixon et al., 1991). Our much lower intravenous dose of 20 mg/kg/day administration of AICAR did not exert any effects.

We conclude that the observed inability of metformin and AICAR at moderate and low doses to modulate blood pressure

and renal salt handling in the Dahl SS rat challenged with a high salt diet warns against direct translation of these drugs toward the treatment of salt-sensitive hypertension. Further, studies are required to define an experimental approach and appropriate animal models for further testing the potential applicability of AMPK activators to this pathological condition.

ETHICS STATEMENT

This study was carried out in accordance with the recommendations of the Public Health Service (PHS) Policy on Humane Care and Use of Laboratory Animals. The protocol was approved by the Institutional Animal Care and Use Committee of Medical College of Wisconsin.

AUTHOR CONTRIBUTIONS

TP drafted the manuscript and figures, performed patch clamp experiments, analyzed *in vivo* data, and collected samples. VL carried out and analyzed *in vivo* experiments. DI and OP participated in patch clamp experiments. HL and NP conducted western blot experiments. KH and AS developed study design and participated in data analysis and interpretation. All authors significantly contributed to writing of the text, figure preparation, and final editing.

ACKNOWLEDGMENTS

This study was supported by National Heart, Lung, and Blood Institute and National Institute of Diabetes and Digestive and Kidney Diseases: grants K99/R00 HL116603, R01 HL108880, R35 HL135749, R01 DK075048 P30 DK079307 and K99/R00 DK105160. We thank the MCW/CRI Histology Core for technical assistance.

REFERENCES

- Al-Bataineh, M. M., Li, H., Ohmi, K., Gong, F., Marciszyn, A. L., Naveed, S., et al. (2016). Activation of the metabolic sensor AMP-activated protein kinase inhibits aquaporin-2 function in kidney principal cells. *Am. J. Physiol. Renal Physiol.* 311, F890–F900. doi: 10.1152/ajprenal.00308.2016
- Almaça, J., Kongsuphol, P., Hieke, B., Ousingsawat, J., Viollet, B., Schreiber, R., et al. (2009). AMPK controls epithelial Na⁺ channels through Nedd4-2 and causes an epithelial phenotype when mutated. *Pflügers Arch.* 458, 713–721. doi: 10.1007/s00424-009-0660-4
- Bain, J., Plater, L., Elliott, M., Shpiro, N., Hastie, C. J., Mclauchlan, H., et al. (2007). The selectivity of protein kinase inhibitors: a further update. *Biochem. J.* 408, 297–315. doi: 10.1042/BJ20070797
- Bankir, L., Bochud, M., Maillard, M., Bovet, P., Gabriel, A., and Burnier, M. (2008). Nighttime blood pressure and nocturnal dipping are associated with daytime urinary sodium excretion in African subjects. *Hypertension* 51, 891–898. doi: 10.1161/HYPERTENSIONAHA.107.105510
- Basu, R., Shah, P., Basu, A., Norby, B., Dicke, B., Chandramouli, V., et al. (2008). Comparison of the effects of pioglitazone and metformin on hepatic and extra-hepatic insulin action in people with type 2 diabetes. *Diabetes* 57, 24–31. doi: 10.2337/db07-0827
- Bhalla, V., Oyster, N. M., Fitch, A. C., Wijngaarden, M. A., Neumann, D., Schlattner, U., et al. (2006). AMP-activated kinase inhibits the epithelial Na⁺ channel through functional regulation of the ubiquitin ligase Nedd4-2. *J. Biol. Chem.* 281, 26159–26169. doi: 10.1074/jbc.M606045200
- Bickel, C. A., Knepper, M. A., Verbalis, J. G., and Ecelbarger, C. A. (2002). Dysregulation of renal salt and water transport proteins in diabetic Zucker rats. *Kidney Int.* 61, 2099–2110. doi: 10.1046/j.1523-1755.2002.00353.x
- Boon, H., Bosselaar, M., Praet, S. F. E., Blaak, E. E., Saris, W. H. M., Wagenmakers, A. J. M., et al. (2008). Intravenous AICAR administration reduces hepatic glucose output and inhibits whole body lipolysis in type 2 diabetic patients. *Diabetologia* 51, 1893–1900. doi: 10.1007/s00125-008-1108-7
- Brian, M. S., Dalpiaz, A., Matthews, E. L., Lennon-Edwards, S., Edwards, D. G., and Farquhar, W. B. (2017). Dietary sodium and nocturnal blood pressure dipping in normotensive men and women. *J. Hum. Hypertens.* 31, 145–150. doi: 10.1038/jhh.2016.53
- Carattino, M. D., Edinger, R. S., Grieser, H. J., Wise, R., Neumann, D., Schlattner, U., et al. (2005). Epithelial sodium channel inhibition by AMP-activated protein kinase in oocytes and polarized renal epithelial cells. *J. Biol. Chem.* 280, 17608–17616. doi: 10.1074/jbc.M501770200
- Carling, D., Aguan, K., Woods, A., Verhoeven, A. J., Beri, R. K., Brennan, C. H., et al. (1994). Mammalian AMP-activated protein kinase is homologous to yeast and plant protein kinases involved in the regulation of carbon metabolism. *J. Biol. Chem.* 269, 11442–11448.

- Choi, Y. H., Lee, D. C., Lee, I., and Lee, M. G. (2008). Changes in metformin pharmacokinetics after intravenous and oral administration to rats with short-term and long-term diabetes induced by streptozotocin. *J. Pharm. Sci.* 97, 5363–5375. doi: 10.1002/jps.21349
- Christensen, M., Jensen, J. B., Jakobsen, S., Jessen, N., Frøkiær, J., Kemp, B. E., et al. (2016). Renoprotective effects of metformin are independent of organic cation transporters 1 & 2 and AMP-activated protein kinase in the kidney. *Sci. Rep.* 6:35952. doi: 10.1038/srep35952
- Cowley, A. W. (1997). Genetic and nongenetic determinants of salt sensitivity and blood pressure. *Am. J. Clin. Nutr.* 65, 587S–593S.
- Cowley, A. W., Yang, C., Zheleznova, N. N., Staruschenko, A., Kurth, T., Rein, L., et al. (2016). Evidence of the importance of Nox4 in production of hypertension in dahl salt-sensitive rats. *Hypertension* 67, 440–450. doi: 10.1161/HYPERTENSIONAHA.115.06280
- De La Sierra, A., Redon, J., Banegas, J. R., Segura, J., Parati, G., Gorostidi, M., et al. (2009). Prevalence and factors associated with circadian blood pressure patterns in hypertensive patients. *Hypertension* 53, 466–472. doi: 10.1161/HYPERTENSIONAHA.108.124008
- Dixon, R., Gourzis, J., Mcdermott, D., Fujitaki, J., Dewland, P., and Gruber, H. (1991). AICA-riboside: safety, tolerance, and pharmacokinetics of a novel adenosine-regulating agent. *J. Clin. Pharmacol.* 31, 342–347. doi: 10.1002/j.1552-4604.1991.tb03715.x
- Evans, L. C., Ryan, R. P., Broadway, E., Skelton, M. M., Kurth, T., and Cowley, A. W. (2015). Null mutation of the NADPH oxidase subunit p67(PHOX) protects the Dahl-S rat from salt-induced reductions in medullary blood flow and GFR. *Hypertension* 65, 561–568. doi: 10.1161/HYPERTENSIONAHA.114.04468
- Fraser, S., Mount, P., Hill, R., Levidiotis, V., Katsis, F., Stapleton, D., et al. (2005). Regulation of the energy sensor AMP-activated protein kinase in the kidney by dietary salt intake and osmolality. *Am. J. Physiol. Renal Physiol.* 288, F578–F586. doi: 10.1152/ajprenal.00190.2004
- Grahame Hardie, D. (2014). AMP-activated protein kinase: a key regulator of energy balance with many roles in human disease. *J. Intern. Med.* 276, 543–559. doi: 10.1111/joim.12268
- Greene, A. S., Yu, Z. Y., Roman, R. J., and Cowley, A. W. (1990). Role of blood volume expansion in Dahl rat model of hypertension. *Am. J. Physiol. Heart Circul. Physiol.* 258, H508–H514.
- Hall, J. E. (2016). Renal dysfunction, rather than nonrenal vascular dysfunction, mediates salt-induced hypertension. *Circulation* 133, 894–906. doi: 10.1161/CIRCULATIONAHA.115.018526
- Hansson, J. H., Nelson-Williams, C., Suzuki, H., Schild, L., Shimkets, R., Lu, Y., et al. (1995). Hypertension caused by a truncated epithelial sodium channel gamma subunit: genetic heterogeneity of Liddle syndrome. *Nat. Genet.* 11, 76–82. doi: 10.1038/ng0995-76
- Henskens, L. H., Kroon, A. A., Van Oostenbrugge, R. J., Haest, R. J., Lodder, J., and De Leeuw, P. W. (2008). Different classifications of nocturnal blood pressure dipping affect the prevalence of dippers and nondippers and the relation with target-organ damage. *J. Hypertens.* 26, 691–698. doi: 10.1097/HJH.0b013e3282f4225f
- Kakizoe, Y., Kitamura, K., Ko, T., Wakida, N., Maekawa, A., Miyoshi, T., et al. (2009). Aberrant ENaC activation in Dahl salt-sensitive rats. *J. Hypertens.* 27, 1679–1689. doi: 10.1097/HJH.0b013e32832c7d23
- Lazo-Fernández, Y., Baile, G., Meade, P., Torcal, P., Martínez, L., Iba-ez, C., et al. (2017). Kidney-specific genetic deletion of both AMPK α -subunits causes salt and water wasting. *Am. J. Physiol. Renal Physiol.* 312, F352–F365. doi: 10.1152/ajprenal.00169.2016
- Li, H., Satriano, J., Thomas, J. L., Miyamoto, S., Sharma, K., Pastor-Soler, N. M., et al. (2015). Interactions between HIF-1 α and AMPK in the regulation of cellular hypoxia adaptation in chronic kidney disease. *Am. J. Physiol. Renal Physiol.* 309, F414–F428. doi: 10.1152/ajprenal.00463.2014
- Long, Y. C., and Zierath, J. R. (2006). AMP-activated protein kinase signaling in metabolic regulation. *J. Clin. Invest.* 116, 1776–1783. doi: 10.1172/JCI29044
- Mangano, D. T. (1997). Effects of acadesine on myocardial infarction, stroke, and death following surgery: a meta-analysis of the 5 international randomized trials. *JAMA* 277, 325–332. doi: 10.1001/jama.1997.03540280063035
- Minokoshi, Y., Kim, Y.-B., Peroni, O. D., Fryer, L. G. D., Muller, C., Carling, D., et al. (2002). Leptin stimulates fatty-acid oxidation by activating AMP-activated protein kinase. *Nature* 415, 339–343. doi: 10.1038/415339a
- Moreno, C., Kaldunski, M. L., Wang, T., Roman, R. J., Greene, A. S., Lazar, J., et al. (2007). Multiple blood pressure loci on rat chromosome 13 attenuate development of hypertension in the Dahl S hypertensive rat. *Physiol. Genomics* 31, 228–235. doi: 10.1152/physiolgenomics.00280.2006
- Moreno, C., Williams, J. M., Lu, L., Liang, M., Lazar, J., Jacob, H. J., et al. (2011). Narrowing a region on rat chromosome 13 that protects against hypertension in Dahl SS-13BN congenic strains. *Am. J. Physiol.* 300, H1530–H1535. doi: 10.1152/ajpheart.01026.2010
- Mori, T., Polichnowski, A., Glocka, P., Kaldunski, M., Ohsaki, Y., Liang, M., et al. (2008). High perfusion pressure accelerates renal injury in salt-sensitive hypertension. *J. Am. Soc. Nephrol.* 19, 1472–1482. doi: 10.1681/ASN.2007121271
- Myerburg, M. M., King, J. D., Oyster, N. M., Fitch, A. C., Magill, A., Baty, C. J., et al. (2010). AMPK agonists ameliorate sodium and fluid transport and inflammation in cystic fibrosis airway epithelial cells. *Am. J. Respir. Cell Mol. Biol.* 42, 676–684. doi: 10.1165/2009-0147OC
- Narasimhan, A., Chinnaiyan, M., and Karundevi, B. (2015). Ferulic acid regulates hepatic GLUT2 gene expression in high fat and fructose-induced type-2 diabetic adult male rat. *Eur. J. Pharmacol.* 761, 391–397. doi: 10.1016/j.ejphar.2015.04.043
- Narkar, V. A., Downes, M., Yu, R. T., Embler, E., Wang, Y.-X., Banayo, E., et al. (2008). AMPK and PPAR δ agonists are exercise mimetics. *Cell* 134, 405–415. doi: 10.1016/j.cell.2008.06.051
- O'hare, J. A., Ferriss, J. B., Brady, D., Twomey, B., and O'sullivan, D. J. (1985). Exchangeable sodium and renin in hypertensive diabetic patients with and without nephropathy. *Hypertension* 7:II43. doi: 10.1161/01.HYP.7.6.Pt_2.II43
- Ohkubo, T., Hozawa, A., Yamaguchi, J., Kikuya, M., Ohmori, K., Michimata, M., et al. (2002). Prognostic significance of the nocturnal decline in blood pressure in individuals with and without high 24-h blood pressure: the Ohasama study. *J. Hypertens.* 20, 2183–2189. doi: 10.1097/00004872-200211000-00017
- Pastor-Soler, N. M., Sutton, T. A., Mang, H. E., Kinlough, C. L., Gendler, S. J., Madsen, C. S., et al. (2015). Mucl1 is protective during kidney ischemia-reperfusion injury. *Am. J. Physiol. Renal Physiol.* 308, F1452–F1462. doi: 10.1152/ajprenal.00066.2015
- Pavlov, T. S., and Staruschenko, A. (2016). Involvement of ENaC in the development of salt-sensitive hypertension. *Am. J. Physiol. Renal Physiol.* doi: 10.1152/ajprenal.00427.2016. [Epub ahead of print].
- Pavlov, T. S., Ilatovskaya, D. V., Palygin, O., Levchenko, V., Pochyniuk, O., and Staruschenko, A. (2015a). Implementing patch clamp and live fluorescence microscopy to monitor functional properties of freshly isolated PKD epithelium. *J. Vis. Exp.* 103:53035. doi: 10.3791/53035
- Pavlov, T. S., Levchenko, V., Ilatovskaya, D. V., Moreno, C., and Staruschenko, A. (2016). Renal sodium transport in renin deficient Dahl salt-sensitive rats. *J. Renin Angiotensin Aldosterone Syst.* 17:1470320316653858. doi: 10.1177/1470320316653858
- Pavlov, T. S., Levchenko, V., Ilatovskaya, D. V., Palygin, O., and Staruschenko, A. (2015b). Impaired epithelial Na⁺ channels activity contributes to cystogenesis and development of autosomal recessive polycystic kidney disease in PCK rats. *Pediatr. Res.* 77, 64–69. doi: 10.1038/pr.2014.145
- Pavlov, T. S., Levchenko, V., O'connor, P. M., Ilatovskaya, D. V., Palygin, O., Mori, T., et al. (2013). Deficiency of renal cortical EGF increases ENaC activity and contributes to salt-sensitive hypertension. *J. Am. Soc. Nephrol.* 24, 1053–1062. doi: 10.1681/ASN.2012080839
- Petersen, J. S., Andersen, D., Muntzel, M. S., Diemer, N. H., and Holstein-Rathlou, N.-H. (2001). Intracerebroventricular metformin attenuates salt-induced hypertension in spontaneously hypertensive rats*. *Am. J. Hypertens.* 14, 1116–1122. doi: 10.1016/S0895-7061(01)02220-8
- Rapp, J. P. (1982). Dahl salt-susceptible and salt-resistant rats. A review. *Hypertension* 4, 753–763. doi: 10.1161/01.HYP.4.6.753
- Rapp, J., Wang, S., and Dene, H. (1989). A genetic polymorphism in the renin gene of Dahl rats cosegregates with blood pressure. *Science* 243, 542–544. doi: 10.1126/science.2563177
- Rojas, L. B. A., and Gomes, M. B. (2013). Metformin: an old but still the best treatment for type 2 diabetes. *Diabetol. Metab. Syndr.* 5, 6–6. doi: 10.1186/1758-5996-5-6
- Roman, R. J., and Kaldunski, M. (1991). Pressure natriuresis and cortical and papillary blood flow in inbred Dahl rats. *Am. J. Physiol.* 261, R595–R602.

- Santur , M., Pitre, M., Gaudreault, N., Marette, A., Nadeau, A., and Bachelard, H. (2000). Effect of metformin on the vascular and glucose metabolic actions of insulin in hypertensive rats. *Am. J. Physiol. Gastrointest. Liver Physiol.* 278, G682–G692.
- Siraskar, B., Huang, D. Y., Pakladok, T., Siraskar, G., Sopjani, M., Alesutan, I., et al. (2013). Downregulation of the renal outer medullary K⁺ channel ROMK by the AMP-activated protein kinase. *Pflügers Arch. Eur. J. Physiol.* 465, 233–245. doi: 10.1007/s00424-012-1180-1
- Stein, S. C., Woods, A., Jones, N. A., Davison, M. D., and Carling, D. (2000). The regulation of AMP-activated protein kinase by phosphorylation. *Biochem. J.* 345, 437–443. doi: 10.1042/bj3450437
- Stumvoll, M., Nurjhan, N., Perriello, G., Dailey, G., and Gerich, J. E. (1995). Metabolic effects of metformin in non-insulin-dependent diabetes mellitus. *N. Engl. J. Med.* 333, 550–554. doi: 10.1056/NEJM199508313330903
- Sullivan, J. M. (1991). Salt sensitivity. Definition, conception, methodology, and long-term issues. *Hypertension* 17, I61–68. doi: 10.1161/01.HYP.17.1_Suppl.I61
- Takahara, M., Kaneto, H., Katakami, N., Matsuhisa, M., and Shimomura, I. (2012). Effect of metformin on hepatic glucose production in Japanese patients with type 2 diabetes mellitus. *Endocr. J.* 59, 845–847. doi: 10.1507/endocrj.EJ12-0068
- Takiar, V., Nishio, S., Seo-Mayer, P., King, J. D. Jr., Li, H., Zhang, L., et al. (2011). Activating AMP-activated protein kinase (AMPK) slows renal cystogenesis. *Proc. Natl. Acad. Sci. U.S.A.* 108, 2462–2467. doi: 10.1073/pnas.1011498108
- Tartan, Z., Uyarel, H., Kasikcioglu, H., Alper, A. T., Ozay, B., Bilsel, T., et al. (2006). Metabolic syndrome as a predictor of non-dipping hypertension. *Tohoku J. Exp. Med.* 210, 57–66. doi: 10.1620/tjem.210.57
- Thorens, B. (2015). GLUT2, glucose sensing and glucose homeostasis. *Diabetologia* 58, 221–232. doi: 10.1007/s00125-014-3451-1
- Woolthead, A. M., Sivagnanasundaram, J., Kalsi, K. K., Pucovsky, V., Pellatt, L. J., Scott, J. W., et al. (2007). Pharmacological activators of AMP-activated protein kinase have different effects on Na⁺ transport processes across human lung epithelial cells. *Br. J. Pharmacol.* 151, 1204–1215. doi: 10.1038/sj.bjp.0707343
- Yu, H., Yang, T., Gao, P., Wei, X., Zhang, H., Xiong, S., et al. (2016). Caffeine intake antagonizes salt sensitive hypertension through improvement of renal sodium handling. *Sci. Rep.* 6:25746. doi: 10.1038/srep25746
- Zhang, F., Xu, X., Zhang, Y., Zhou, B., He, Z., and Zhai, Q. (2013). Gene Expression profile analysis of type 2 diabetic mouse liver. *PLoS ONE* 8:e57766. doi: 10.1371/journal.pone.0057766
- Zhang, H. Y., Reddy, S. R., and Kotchen, T. A. (1994). Antihypertensive effect of pioglitazone is not invariably associated with increased insulin sensitivity. *Hypertension* 24, 106–110. doi: 10.1161/01.HYP.24.1.106
- Zhou, G., Myers, R., Li, Y., Chen, Y., Shen, X., Fenyk-Melody, J., et al. (2001). Role of AMP-activated protein kinase in mechanism of metformin action. *J. Clin. Invest.* 108, 1167–1174. doi: 10.1172/JCI13505

Conflict of Interest Statement: The authors declare that the research was conducted in the absence of any commercial or financial relationships that could be construed as a potential conflict of interest.

Copyright © 2017 Pavlov, Levchenko, Ilatovskaya, Li, Palygin, Pastor-Soler, Hallows and Staruschenko. This is an open-access article distributed under the terms of the Creative Commons Attribution License (CC BY). The use, distribution or reproduction in other forums is permitted, provided the original author(s) or licensor are credited and that the original publication in this journal is cited, in accordance with accepted academic practice. No use, distribution or reproduction is permitted which does not comply with these terms.