



The control and importance of hyaluronan synthase expression in palatogenesis

Jennifer L. Galloway, Sarah J. Jones, Peter A. Mossey and Ian R. Ellis*

Unit of Cell and Molecular Biology, Dundee Dental School, University of Dundee, Dundee, UK

Edited by:

Daniel Graf, University of Zurich, Switzerland

Reviewed by:

Licia Selleri, Weill Medical College of Cornell University, USA

Matthias Chiquet, University of Bern, Switzerland

*Correspondence:

Ian R. Ellis, Unit of Cell and Molecular Biology, Dundee Dental School, University of Dundee, Park Place, Dundee, DD1 4HR, Scotland, UK.
e-mail: irellis@dundee.ac.uk

Development of the lip and palate involves a complex series of events that requires the close co-ordination of cell migration, growth, differentiation, and apoptosis. Palatal shelf elevation is considered to be driven by regional accumulation and hydration of glycosaminoglycans, principally hyaluronan (HA), which provides an intrinsic shelf force, directed by components of the extracellular matrix (ECM). During embryogenesis, the extracellular and pericellular matrix surrounding migrating and proliferating cells is rich in HA. This would suggest that HA may be important in both shelf growth and fusion. TGF β 3 plays an important role in palatogenesis and the corresponding homozygous null (TGF β 3^{-/-}) mouse, exhibits a defect in the fusion of the palatal shelves resulting in clefting of the secondary palate. TGF β 3 is expressed at the future medial edge epithelium (MEE) and at the actual edge epithelium during E14.5, suggesting a role for TGF β 3 in fusion. This is substantiated by experiments showing that addition of exogenous TGF β 3 can “rescue” the cleft palate phenotype in the null mouse. In addition, TGF β 1 and TGF β 2 can rescue the null mouse palate (*in vitro*) to near normal fusion. *In vivo* a TGF β 1 knock-in mouse, where the coding region of the TGF β 3 gene was replaced with the full-length TGF β 1 cDNA, displayed complete fusion at the mid portion of the secondary palate, whereas the anterior and posterior regions failed to fuse appropriately. We present experimental data indicating that the three HA synthase (Has) enzymes are differentially expressed during palatogenesis. Using immunohistochemistry (IHC) and embryo sections from the TGF β 3 null mouse at days E13.5 and E14.5, it was established that there was a decrease in expression of Has2 in the mesenchyme and an increase in expression of Has3 in comparison to the wild-type mouse. *In vitro* data indicate that HA synthesis is affected by addition of exogenous TGF β 3. Preliminary data suggests that this increase in HA synthesis, in response to TGF β 3, is under the control of the PI3kinase/Akt pathway.

Keywords: HA, Has, palatogenesis, TGF β , cleft palate

INTRODUCTION

Palatogenesis is a developmental event which starts at week 4 in human embryonic development and is not completed until around week 12 (Mossey et al., 2009); and is comprised of two main events i.e. formation of the primary and the secondary palate. The focus of this study will be the events implicated in formation of the secondary palate. The palatal shelves grow in a vertical orientation following the influx of mesenchymal cells at the maxillary process. There are two particularly important events in secondary palatogenesis: palatal shelf elevation and palatal shelf fusion (Mossey et al., 2009). Historically, it was believed that during palatal shelf elevation in mice, the epithelial area at the tip of the vertical palatal shelf would rotate above the tongue to become the medial edge epithelium (MEE) (Gritli-Linde, 2007). However, alternative methods have also been mooted such as, a “flowing” movement (Greene and Kochhar, 1973; Diewert and Tait, 1979) and the production of an out-growth from the side of the palatal shelf so that the MEE is composed of epithelial cells from the edge of the palatal shelves

nearest the tongue (Jin et al., 2010). It has also been suggested that the most anterior and posterior region of the palate have a different method of changing palatal shelf orientation than the mid-palate. It is reported that the mid-palate elevates by rotation and remodeling the medial edge of the shelf, in accordance with the thoughts of Jin et al. (2010), while the front and back portions of the palate develop new tissue by remodeling. Once the shelves have elevated, they grow toward each other, the shelves touch and form a mid-line epithelial seam which then disappears to form the completely fused secondary palate (Mossey et al., 2009).

Cleft palates are a common developmental abnormality with around 1–2 per 1000 births affected (Christensen, 2002). Unfortunately, the molecular events involved in palatogenesis are currently poorly understood, thus there are no clear ways of preventing the development of oral clefts. It is therefore essential that research into the mechanisms involved in abnormal palatogenesis is carried out, as a cleft palate can have a marked affect a patient’s quality of life (Marcusson et al., 2001).

The TGF β family consists of more than 30 proteins (Nawshad et al., 2005). These proteins are involved in numerous biological processes including, proliferation, differentiation, and apoptosis, as well as epithelial-mesenchymal transition (EMT), extracellular matrix (ECM) synthesis and deposition (Martinez-Alvarez et al., 2000). There are three human isoforms; TGF β 1, TGF β 2, and TGF β 3, which are all expressed in the epithelium of the palatal shelves at different stages of palatogenesis (Meng et al., 2009). Although the isoforms are known to share approximately 71–76% sequence homology, their roles in embryogenesis (and after) vary significantly (Rotzer et al., 2001). Their specific function is highly dependent upon which member of the TGF β family is activated. For example, for EMT, TGF β 1 activation occurs in cancer, while activation of TGF β 3 occurs during development (Yu et al., 2009).

Hyaluronan (HA) is a high molecular mass polysaccharide consisting of D-glucuronic acid (1- β 3) N-acetyl D-glucosamine (1- β 4) disaccharide repeats (Ellis et al., 1997). Unlike other glycosaminoglycans (GAGs), HA is not synthesized within the Golgi apparatus, but at the plasma membrane by the addition of UDP-Glucuronic acid and UDP-N-acetyl glucosamine on membrane bound enzymes known as HA synthases (Has) (Moffatt et al., 2011). These enzymes synthesize HA and secrete it directly through the plasma membrane into the extracellular environment (Moffatt et al., 2011). The Has family is comprised of three members; Has1, Has2, and Has3, which are all composed of a transmembrane domain and a large cytosolic catalytic domain (Laurent and Fraser, 1992; Weigel et al., 1997; Moffatt et al., 2011). However, they differ in their stability, in the time they are expressed during development (Tien and Spicer, 2005), their level of expression in different cell types, with growing cells expressing higher levels than those that are not (Jacobson et al., 2000) and the way they are affected by external stimuli (Ellis et al., 2007). Each of the Has produces HA with the same structure, but with various molecular weights, thus allowing cells to utilize HA differently (Itano et al., 1999) (Table 1). As the Has enzymes are important in many processes during and following development, they must be strictly regulated. This may occur post-transcriptionally by inhibition of translation by naturally occurring anti-sense Has2 (Nishida et al., 2005; Michael et al., 2011), dimerisation of the

Has enzymes, modification of the enzymes through monoubiquitination, the ABC transport system which moves HA into the ECM and the effect of certain lipids making up the plasma membrane (Karousou et al., 2010). Furthermore, regulation may occur through increased or decreased levels of the sugar substrates needed for HA production (Ventura et al., 2006). The rate at which the enzymes are translated may also be important (Recklies et al., 2001).

Previous studies have reported a link between HA and TGF β 3 in wound healing. The roles of HA and TGF β 3 have also been linked to scarless wound healing. Longaker et al. (1991), suggest that HA may be vital in providing foetal cells with an environment for scarless wound healing, as it is present for much longer in foetal cells compared to the short initial presence in adult cells. Furthermore, HA may be able to prevent or reduce adult scar formation through exogenous application (Hellstrom and Laurent, 1987; Shah et al., 1995) speeding up the process of wound healing (Laurent and Fraser, 1992). It could therefore be possible that a common pathway involving TGF β 3 and HA is involved in scarless wound healing which is a throwback to the early link in developmental processes such as secondary palate formation.

Our working hypothesis is that HA has a role in normal palatogenesis both in terms of hydration, enabling shelf elevation and as a matrix for cell migration and proliferation. Perturbation of growth factors such as TGF β 3 and EGF lead to reduced synthesis of HA (or changes in the size of HA produced) and can lead to the formation of a cleft palate.

MATERIALS AND METHODS

IMMUNOHISTOCHEMISTRY (IHC)

Coronal tissue sections of wild-type and TGF β 3 null mouse embryo crania (C57 strain), fixed in 4% (v/v) paraformaldehyde, were a gift from Professor M. Dixon (Manchester Dental School). After fixing and pre-treatment with citrate buffer (pH6) at 95°C, the tissue sections were stained using a method based on that described in Jones et al. (2007). Normal swine serum (20% v/v in PBS, Vector) was used to block non-specific staining in sections to be stained for Has1 and Has2 and normal goat serum (20% v/v in PBS, Vector) was used to block

Table 1 | Differences between the Has enzymes.

	Has1	Has2	Has3
Gene Location in Humans (Spicer et al., 1997)	Boundary of 19q13.3 and 19q13.4	8q24.12	16q22.1
Gene Location in Mice (Spicer et al., 1997)	Chromosome 17	Chromosome 15	Chromosome 8
Expression-mRNA (Tien and Spicer, 2005)	During gastrulation. Stopped by E8.5 in mice	At all times during development. The only Has expressed in the elevating palatal shelves	After E10.5 in mice. The only Has present in the dental epithelial placode
Stability (Tien and Spicer, 2005)	Least stable	Intermediate stability	Most stable
Molecular Weight of HA Produced (Itano et al., 1999)	Between 2×10^5 and 2×10^6 Da	Between 2×10^5 and 2×10^6 Da	Between 1×10^5 and 1×10^6 Da

sections to be stained for Has3. Following optimization, the Has1, Has2, and Has3 primary antibodies (sc23145, sc34068, sc66917, Santa Cruz Biotechnology) were used at a concentration of 2 µg/ml. Biotinylated swine anti-goat (DakoCytomation, Glostrup, Denmark) and biotinylated goat anti-rabbit (Vector, Burlingame, USA) secondary antibodies were used at concentrations of 1:150 and 1:166 respectively. Primary antibody only, secondary antibody only and blocking peptides for sc34068 and sc66916 (Santa Cruz Biotechnology) were used as negative controls. Staining was visualized using an avidin-biotinylated enzyme complex (Vectastain ABC kit, Standard Elite, Vector Labs.) and incubation with DAB (3',3'-diaminobenzidine), a substrate for the enzyme. Sections were counter-stained with haematoxylin.

3D COLLAGEN GEL MIGRATION ASSAY

Type I collagen from rat tail tendons was used to make 2 ml collagen gels in 35 mm plastic tissue culture dishes as previously described (Ellis et al., 2010). Collagen gels were overlaid with 1 ml of either serum-free MEM (SF-MEM) or SF-MEM containing 4× the final concentration of the test compounds to be examined. Confluent stock cultures of fibroblasts were then harvested, resuspended in growth medium containing 4% (v/v) donor calf serum at 2×10^5 cells/ml and 1 ml aliquots were added to the overlaid gels. Considering the 2 ml volume of gel, 1 ml medium overlay and 1 ml cell inoculum, this procedure gives a final concentration of 1% (v/v) serum in both control and test cultures. Fibroblasts attach to the surface of the gel within 1 h and start migrating into the underlying 3D gel within 24 h. Four days after plating, the number of cells that remain on the surface or migrate into the gel was determined by microscopic observation of 10 randomly selected fields in each of duplicate cultures (Ellis et al., 2010). Cell migration was then expressed by the number of cells that migrated into the 3D gel, as a percentage of the total number of cells present (mean ± SEM).

METABOLIC LABELING AND DETERMINATION OF TOTAL LABELED HA

GAGs synthesized by adult and foetal fibroblasts were metabolically labeled by incubating cultures with $2.5 \mu\text{Ci ml}^{-1}$ of [^3H]-glucosamine for 4 days. Metabolically labeled cell cultures were then separated into medium and pericellular fractions (Ellis et al., 1992). For cells plated onto collagen gels, the medium and gel were transferred to a centrifuge tube and spun at 3000 rpm for 20 min at 4°C. The medium was removed and the compacted gel resuspended in 2 ml of phosphate-buffered-saline (PBS). Centrifugation was repeated and the supernatant was then combined with the previous one, to form the medium fraction. The pericellular fraction was obtained by extracting the cell layer with 2 ml 4M-guanidinium chloride, 50 mM-Tris, pH 7.4, for 24 h at 4°C. The insoluble material was removed by centrifugation at 12,000 g for 2 min in a microcentrifuge and the supernatant was collected as the pericellular fraction. The medium and pericellular fractions were dialyzed against 0.1 M sodium acetate, 5 mM EDTA, pH 5.5 for 48 h (with two changes per day). For cells plated on plastic tissue culture dishes, the medium was transferred to a centrifuge tube. The dish was then washed with 2×1 ml PBS which was added to the medium. The cells on the dish were

extracted in the same manner as the cells on the collagen gel, as described above.

The dialysate volumes were measured and six 200 µl aliquots were taken of each sample. 20 µl of hyaluronate lyase (final concentration 0.5 U/ml in acetate buffer) was added to three of these, whilst 20 µl of acetate buffer was added to the three remaining controls. All samples were incubated for 17 h at 37°C, then boiled for 1 min to inactivate the enzyme and unlabeled carrier GAG added (30 µl 1% chondroitin sulphate/0.5% HA in PBS). The undigested GAGs were precipitated with 4 volumes of 1.3% potassium acetate in 100% ethanol at -20°C for 3 h (Underhill and Toole, 1979). The precipitate was sedimented by centrifugation at 12,000 g for 5 min, the supernatant was again removed and the pellet redissolved in 100 µl of 1 M sodium hydroxide and boiled for 3 min. The sodium hydroxide was neutralized with 100 µl of 1 M hydrochloric acid. The GAGs were transferred to scintillation vials had 1 ml of scintillant added and the radioactivity determined using a Packard scintillation counter. The disintegrations per minute (DPM) associated with HA was taken as the difference between the counts in the control and enzyme digested preparations and were controlled per 10^5 cells.

A relatively insignificant proportion (<5%) of the total synthesized HA was found in the pericellular fraction under all experimental conditions examined; data are consequently only presented for HA present in the medium fraction.

SDS PAGE

Cell lysates from treated fibroblasts were made with RIPA buffer using the method described in Klemke et al. (1994) and separated by 8% SDS PAGE, under reducing conditions (Laemmli, 1970). Samples were mixed with Laemmli loading buffer (Bio-Rad Laboratories Ltd., Hemel Hempstead, Hertfordshire UK) containing 5% (v/v) 2-mercaptoethanol and heated for 5 min at 95°C prior to loading onto the gel. Magic Markers (Invitrogen Ltd.) were also loaded.

WESTERN BLOTTING

SDS PAGE gels were electroblotted onto nitrocellulose at 15 V for 42 min, using a Bio-Rad semi-dry blotting apparatus and the transfer buffer 48 mM Tris, 39 mM glycine, 1.3 mM SDS, 20% v/v methanol (Towbin et al., 1979). Buffers used during development of the blots were based on TBS (20 mM Tris-HCl, 137 mM sodium chloride pH 7.6). Blots were blocked in blocking buffer (1% w/v low fat skimmed milk powder, 0.05% v/v Tween 20, in TBS) for 10–30 min at room temperature and then incubated overnight at room temperature in blocking buffer, containing anti-phospho-Akt (Ser473) antibody (Cell Signaling Technology). Blots were then washed (3×20 min) in TBST (TBS, 0.05% v/v Tween 20) and incubated in a 1:2000 dilution of goat anti-rabbit HRP (Cell Signaling). Blots were then washed (3×20) min in TBST and finally for 5 min in TBS. Bands were then detected by chemiluminescence using the substrate SuperSignal West Dura (Pierce, Thermo Fisher Scientific).

IMMUNOCYTOCHEMISTRY

Cell cultures were incubated overnight in serum-free MEM and on the following day placed in test conditions for 1 h prior to

fixation. Medium was removed from the dishes and cells were rinsed with TBS. Cells were incubated in 4% v/v paraformaldehyde at 4°C for 20 min, then washed with TBS for 5 min, three times. Cells were then washed in 0.2% Triton for 5 min and TBS again for 5 min, three times. Cells were then left in 3% H₂O₂ at room temperature for 20 min then washed in TBS twice for 5 min. Areas of the dish were circled with an immunopen and 150 µl 5% v/v Normal Goat Serum was added to each ring for 30 min. The dishes were rinsed and washed twice with TBS for 5 min. Each ring was treated with 150 µl primary antibody [phospho Akt (Ser473) Cell Signaling Technology] or negative controls and incubated in a humidified chamber at 4°C overnight. On the following day dishes were equilibrated to room temperature for an hour before being rinsed in TBS and washed twice in TBST for 5 min. Cells were washed for 5 min in TBS before addition of the detecting system (Signal Boost from Cell Signaling), 1–3 drops per ring. After 30 min, dishes were rinsed with TBS, washed twice in TBST for 5 min, then TBS for 5 min. Cells were incubated in DAB solution for 10 min at room temperature. To stop the reaction, dishes were rinsed in tap water before counterstaining with Mayer's Haematoxylin for 30 s and Bluing Agent for 1 min. Coverslips were mounted using aqueous mount and plates viewed using a Motic BA400 microscope.

RESULTS

LOCALIZATION OF Has1, Has2, AND Has3 *ex vivo* STUDIES OF DEVELOPING EMBRYONIC MOUSE PALATE

The first process of secondary palate development is shelf elevation. In the wild-type or TGFβ3 null C57 strain of mouse this takes place around E13.5 *in utero*. We investigated the expression of the Has enzymes just prior to shelf elevation. Neo-natal mouse heads were collected from E13.5 embryos either having the wild-type or the TGFβ3 homozygous null phenotype. The H and E sections indicate that the shelves had not elevated in both the wild-type and knockout mouse heads (**Figures 1A and B**). These were fixed, paraffin-embedded, sectioned and stained, according to the method describe above, with antibodies raised against Has1, Has2, and Has3 (**Figures 2A–F**). In the wild-type, there was very little or no staining for Has1 in the sections at E13.5. Staining for Has2 was intense around the epithelium and there was some staining in the mesenchyme. Has3 was intensely stained around the epithelium with strong staining in the mesenchyme. In the TGFβ3 null mouse, staining for Has1 was negative. Staining for Has2 indicated that there was some present in the epithelium and mesenchyme but was reduced in amount. Staining for Has3 was increased in both the epithelium and the mesenchyme compared to the wild-type.

The second major event of secondary palatogenesis is fusion of palatal shelves (**Figures 1C and D**). This usually takes place in the developing mouse around day 14.5 *in utero*. We have therefore investigated the expression of the Has enzymes as the wild-type palates fuse. It should be noted that in the TGFβ3 null C57 strain of mouse embryos, the shelves did not meet (**Figures 3A–F**). Neo-natal mouse heads from both phenotypes were collected and were sectioned and stained with antibodies raised against Has1, Has2, and Has3. In the wild-type mouse, there was some

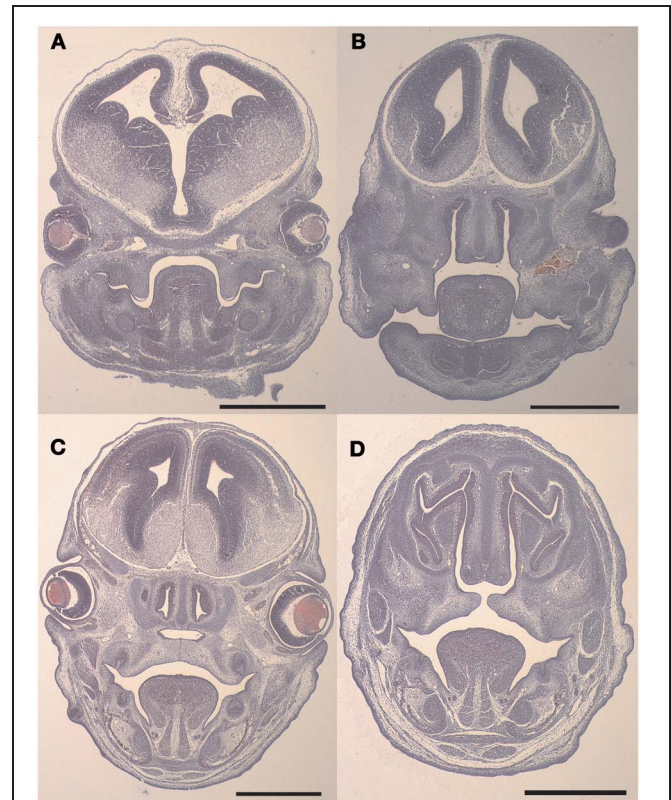


FIGURE 1 | Coronal sections of C57 Wild-type and TGFβ3 null mouse crania stained with H&E before and after palatal shelf elevation.

Representative coronal sections of wild-type and TGFβ3 null mouse crania at embryonic ages E13.5 and E14.5 stained with H&E are provided for orientation purposes (**A–D**). The wild-type mouse sections are (**A**) (E13.5) and (**C**) (E14.5) and the TGFβ3 null mouse sections are (**B**) (E13.5) and (**D**) (E14.5).

staining of Has1, especially in the mesenchyme and some in the epithelium although it was absent in the epithelial triangles. Has2 expression appears similar to that at E13.5 appearing in both the mesenchyme and the epithelium. It appears quite intense around the disappearing midline epithelium. The expression of Has3 is very strong both in the epithelium and the mesenchyme and more intense than Has2 staining in the epithelium. In the TGFβ3 null mouse, the palatal shelves do not meet, Has1 staining is very low and staining for Has2 was reduced in both the epithelium and the mesenchyme. Has3 appears to be expressed quite strongly especially when compared with Has1 and Has2.

In vitro STUDIES OF FOETAL AND ADULT FIBROBLASTS: RESPONSE TO TGFβ3

The reduction of Has protein expression in the mouse palate in the TGFβ3 null mouse lead to the development of our hypothesis that HA is important in palatogenesis. Previous studies using the mouse C57 strain suggests that loss of functional TGFβ3 protein always produces a cleft palate (Proetzel et al., 1995). The interaction between TGFβ3, cell migration and HA synthesis has been reported in the literature with respect to adult and foetal fibroblasts (Ellis and Schor, 1998)

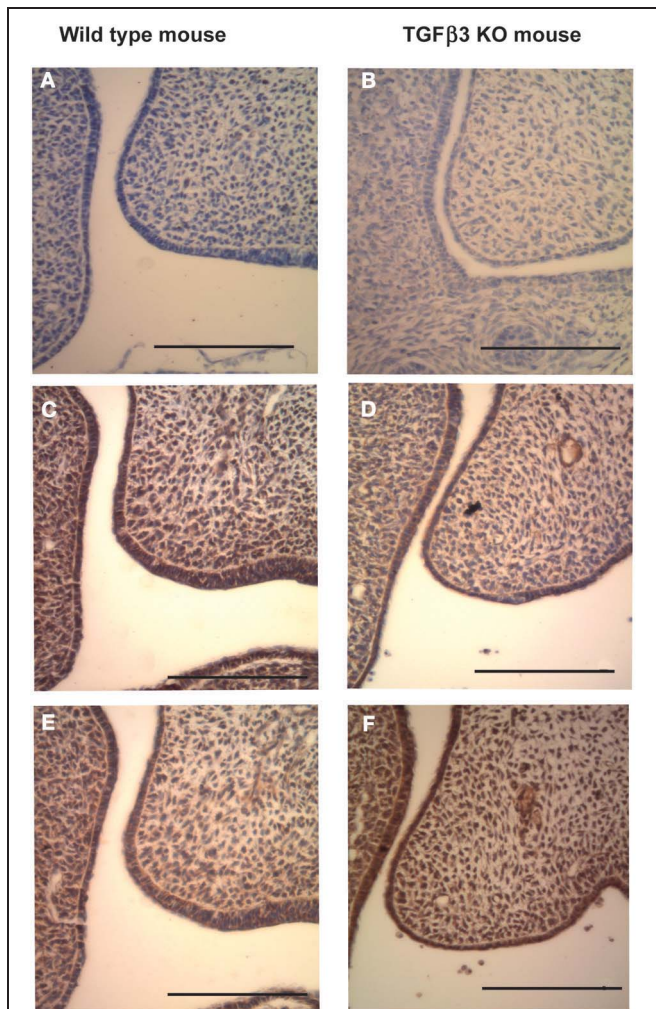


FIGURE 2 | Coronal sections of C57 Wild-type and TGFβ3 null mouse crania stained for Has expression before palatal shelf elevation (E13.5). Wild-type (A,C and E) and TGFβ3 null (B,D and F) mouse palatal shelves at E13.5 were stained for Has1 using a polyclonal goat anti-Has1 antibody (A), wild-type mouse and (B), TGFβ3 null mouse, Has2 using a polyclonal goat anti-Has2 antibody (C), wild-type mouse and (D), TGFβ3 null mouse or Has3 using a polyclonal rabbit anti-Has3 antibody (E), wild-type mouse and (F), TGFβ3 null mouse. Positive staining appears brown whereas negative staining appears purple. The bars on the diagrams represent 200 μm. Both wild-type and TGFβ3 null mouse palatal shelves appeared to have low expression for Has1. Whereas there is a slight reduction in Has2 expression and a slight increase in Has3 expression between the wild type and the TGFβ3 homozygous null mouse.

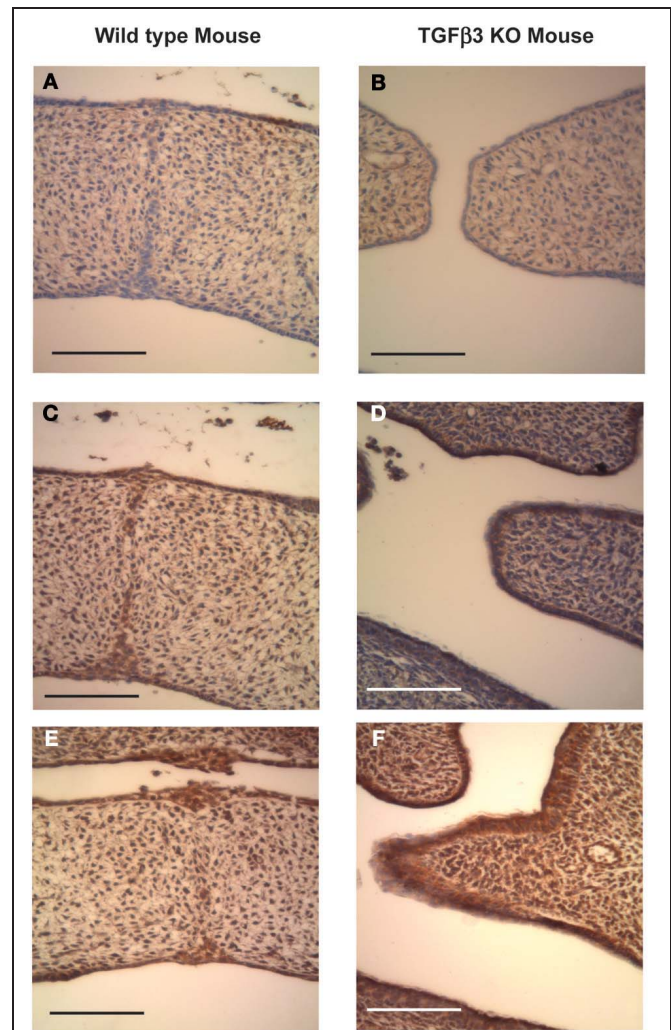
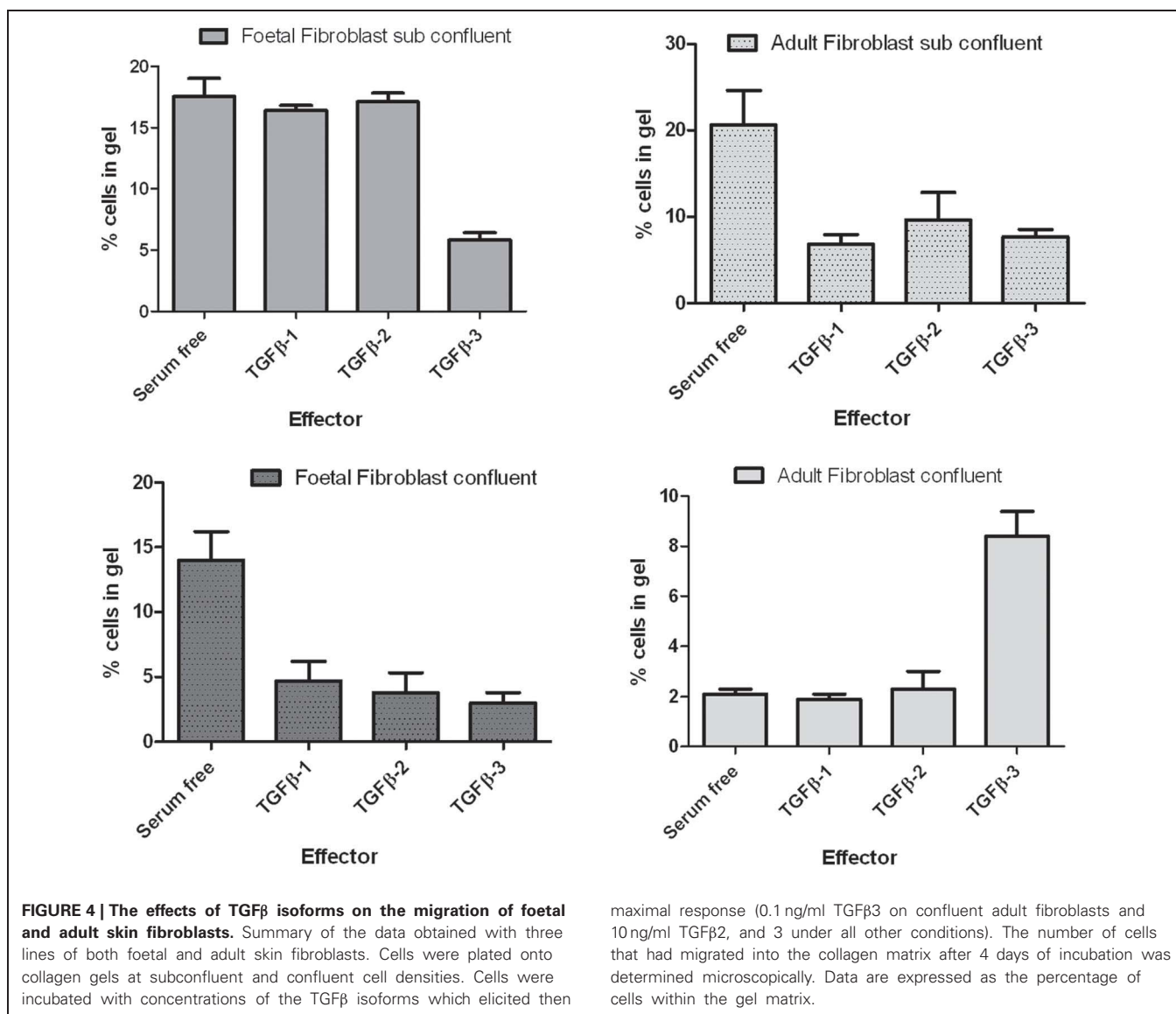


FIGURE 3 | Coronal sections of C57 Wild-type and TGFβ3 null mouse crania stained for Has expression after palatal shelf elevation (E14.5). Wild-type (A,C and E) and TGFβ3 null (B,D and F) mouse palatal shelves at E14.5 were stained for Has1 using a polyclonal goat anti-Has1 antibody (A), wild-type mouse and (B), TGFβ3 null mouse, Has2 using a polyclonal goat anti-Has2 antibody (C), wild-type mouse and (D), TGFβ3 null mouse or Has3 using a polyclonal rabbit anti-Has3 antibody (E), wild-type mouse and (F), TGFβ3 null mouse. Positive staining appears brown whereas negative staining appears purple. The bars on the diagrams represent 200 μm. The expression of Has1 and 2 appears reduced in the absence of TGFβ3, with the reduction in Has2 being the greatest. Has3 expression may be slightly increased in the absence of TGFβ3.

but their possible interaction has not been investigated in the context of palatogenesis. The exact pathway involving TGFβ3 (and other TGFβ family members) in palatogenesis is currently unknown, but previous *in vitro* studies have found that TGFβ3 affects the production of HA in human fibroblasts (Ellis and Schor, 1998). During palatal fusion a number of mechanisms have been reported to be important in the disappearance of the mid-line including EMT, apoptosis and migration. However, which one of these mechanisms is most important is open to debate. Our investigations have led

us to study the effect of growth factors on cell motility. Cell migration is also affected by the addition of different TGFβ proteins to fibroblasts. Fibroblasts from both foetal and adult origin were isolated in the laboratory and were characterized by their ability to respond to various members of the TGFβ family. The addition of different TGFβ3 isoforms to fibroblasts affects cell motility depending upon the confluence of the cells and their origin (Figure 4). TGFβ3 inhibits the migration of both adult and foetal fibroblasts plated onto the surface of 3D collagen gels at sub-confluent cell densities. However, when



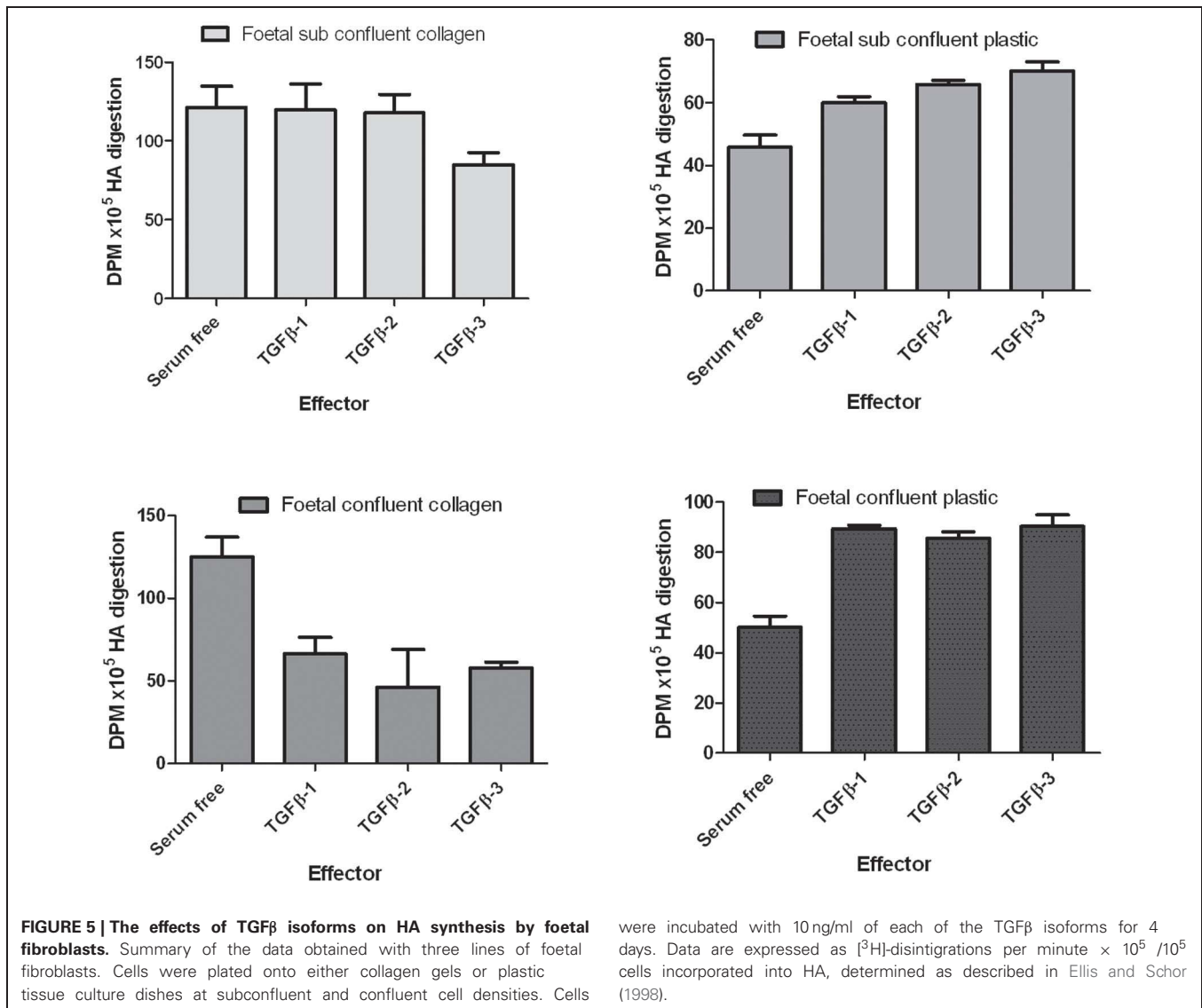
plated at confluent cell density, foetal cells are inhibited and adult cells stimulated to migrate into the collagen gel. Foetal fibroblasts produce different amounts of HA *in vitro* (Figure 5) and the addition of TGFβ isoforms to foetal skin fibroblasts on collagen gels has been shown to inhibit HA synthesis but stimulate HA synthesis when plated on normal tissue culture dishes (Figure 5).

The pathways by which cells respond to growth factors were investigated *in vitro*. Using a foetal fibroblast line the effect of growth factors on HA synthesis was investigated. The amount of HA synthesized in response to both EGF and TGFβ3 was increased. Experiments employing a number of signal transduction pathway inhibitors found that the PI-3 kinase pathway was important for HA synthesis (data not shown). Addition to the assay of the inhibitor LY294002 with EGF and TGFβ3 inhibited HA synthesis to background levels (Figure 6A). The PI-3 kinase pathway signals via the protein Akt, which is important

in cell migration, EMT and apoptosis. The addition, to the cells, of increasing amounts of TGFβ3 increased Akt phosphorylation at Serine 473 which fully activates Akt (Figure 6B). Immunocytochemistry of fixed cells indicated that the phosphorylated protein appears to translocate to the nucleus when compared with control cells (Figures 6C-1 and C-2). Treatment of the cells with the inhibitor LY294002 reduced the amount of pAkt staining and also reduced the amount translocated to the nucleus (Figure 6C-3).

DISCUSSION

The data presented indicates: (1) that the palatal shelves of the TGFβ3 homozygous null strain of mice elevated as normal. (2) The palatal shelves of the TGFβ3 homozygous null mouse did not meet and therefore could not fuse. (3) Has1 staining appeared to be present only during the fusion process of the wild-type mouse and was absent in the TGFβ3 homozygous null mouse. (4)

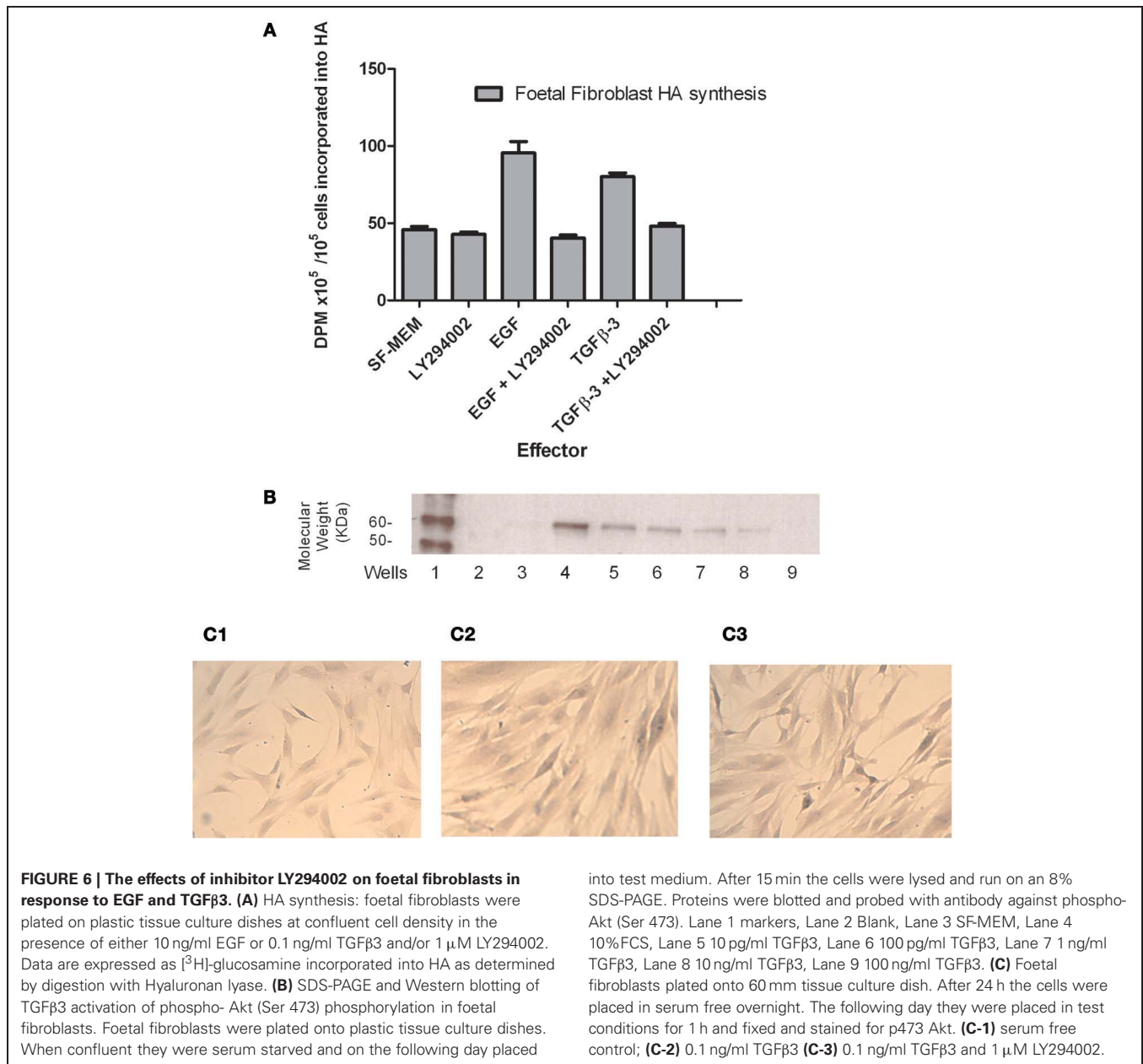


Has2 staining was present during both the elevation and fusion processes of the wild-type mouse but reduced in the TGFβ3 null mouse. (5) Has3 staining was present during both phases of palatal development in the wild-type mouse but only slightly increased in the TGFβ3 null mouse. (6) The TGFβ family of proteins affects cell migration in a cell density and cell origin dependent manner. (7) The TGFβ family of proteins affects HA synthesis in a matrix dependent manner. (8) TGFβ3 uses the PI3kinase/akt pathway to affect HA synthesis.

HYALURONAN AND ITS ROLE IN PALATOGENESIS

The study of Has expression in the normal palate suggests that Has2 and 3 are expressed in the shelves prior to elevation and that HA is synthesized by both the epithelium and mesenchyme. In normal palate development it has been proposed that the main intrinsic force for elevation is provided by HA (Ferguson, 1988), which mechanically traps large quantities of water in its large branched network structure (Scott et al., 1991), thus causing

expansion of the palatal shelves and aiding elevation. Our data confirm that in normal palate development, HA can be synthesized in the palatal shelves and does not have to be transported from other areas. It should be noted that the shelves also elevate in the TGFβ3 homozygous null mouse. Our data suggests that there is a reduction in the amount of Has2 and Has3 present in these shelves. It may be that even a small amount of these enzymes can produce enough HA for the shelves to elevate. However, the reduced expression of these enzymes at this time point may effect development at a later stage, for example when the palatal shelves are growing toward one another before fusing. Has2 synthesizes high molecular weight HA (Itano et al., 1999) which has different properties to the lower molecular weight HA synthesized by Has3. Growth factors have been reported to increase the amount of high molecular weight HA synthesized by mesenchymal cells from both foetal and adult origins (Ellis et al., 1997, 1999). The ECM that cells are grown on can also affect response to growth factors and this could explain the fact that TGFβ3



increases HA synthesis of foetal fibroblasts plated on plastic tissue culture dishes but decreases it when the cells are plated on collagen gels. This increase in high molecular weight HA synthesis can be accompanied by an increase in cell migration. Addition of high molecular weight HA increases the migration of adult fibroblasts into 3D collagen gels suggesting that the high molecular weight HA has roles to play in tissue development other than binding of large amounts of water. High molecular weight HA when added to fibroblasts plated onto the surface of 3D collagen gel causes an increase of migration into the gel (unpublished). HA can also influence cell behavior and development through interactions with other molecules, including the HA cell surface receptor Cluster of Differentiation 44 (CD44) (Aruffo et al., 1990) and as part of a pericellular matrix structure (Laurent and Fraser, 1992).

Finally, the molecular weight and concentration of previously synthesized HA located in the ECM may influence further HA production (Smith and Ghosh, 1987). At a transcriptional level, regulation of Has activity may occur at regions upstream of each of the Has genes through stimulation by cytokines and other factors (Monslow et al., 2003), such as, epidermal growth factor (EGF) (Yamada et al., 2004), transforming growth factor α (TGFα) (Bachem et al., 1989) and members of the transforming growth factor β (TGFβ) family (Sugiyama et al., 1998).

TGFβ3 AND ITS ROLE IN PALATOGENESIS

TGFβ3 has been found to have a vital role in palatogenesis as TGFβ3 homozygous null mice develop a cleft palate due to a failure in the fusion process (Proetzel et al., 1995), while the

exogenous addition of TGF β 3 can reverse cleft palate development in mice (Shah et al., 1995). In palatogenesis, TGF β 3 is the first member of the TGF β family to be expressed and it exhibits spatial expression within the palatal shelves, which changes as development progresses (Fitzpatrick et al., 1990). The absence of TGF β 3 does not affect the development of any other part of the craniofacial region in mice, which could suggest that the effect of TGF β 3 on palatogenesis involves a primary, intrinsic mechanism (Proetzel et al., 1995).

The exact role of TGF β 3 in palatogenesis remains unclear with conflicting literature published on its role in adhesion of the opposing shelves. It may also have an important role in allowing the cell movement requisite for fusion (Proetzel et al., 1995; Kaartinen et al., 1997; Martinez-Alvarez et al., 2000). TGF β 3 homozygous null mouse models have been very important in developing an understanding of the processes involved in palatogenesis. In general development, TGF β 3 is involved in EMT as well as regulating a large number of cell processes including, cell proliferation, cell differentiation and the production of ECM (Miettinen et al., 1994). However, it is highly plausible that there are complex interactions between many growth factors, which may explain why different strains of TGF β 3 homozygous null mice develop different phenotypes of cleft palate (Proetzel et al., 1995). Many interactions have been suggested in the literature, for example, TGF β 3 may regulate palatal shelf adhesion through chondroitin sulphate proteoglycans, which appear on the apical surface of MEE cells just before the shelves meet (Gato et al., 2002). It has also been suggested that TGF β 3 upregulates lymphoid-enhancing factor 1 (LEF1) using Smad2,4/LEF1, which in turn allows EMT to occur (Nawshad and Hay, 2003). Furthermore, Xu et al. (2006), suggest that the transcription factor Irf6 is controlled by TGF β and that it could have an important role in the regulation of both human and mouse MEE cells during fusion. TGF β family members are able to affect cell processes by utilizing type I, type II threonine kinase receptors and Smad proteins to affect DNA transcription (Massague, 1998). The signals produced by these receptors must be strictly regulated (Gritli-Linde, 2007). The role of the TGF β type II receptor in palatogenesis is emphasized by the development of a cleft palate in mouse embryos lacking the TGF β type II receptor gene (Xu et al., 2006). In addition to the SMAD pathway, TGF β 3 has been reported to activate the PI3kinase/akt pathway (Nawshad and Hay, 2003). Preliminary *in vitro* data described here suggests that this may be linked to HA synthesis. Previous work has reported that the phosphorylation of Akt is important for cell motility (Ellis et al., 2010). The data reported here indicate that this pathway is up-regulated in response to mesenchymal cells to TGF β 3 and that blocking of this pathway also affects HA synthesis. It remains to be determined if this response is a direct or an indirect response of this pathway.

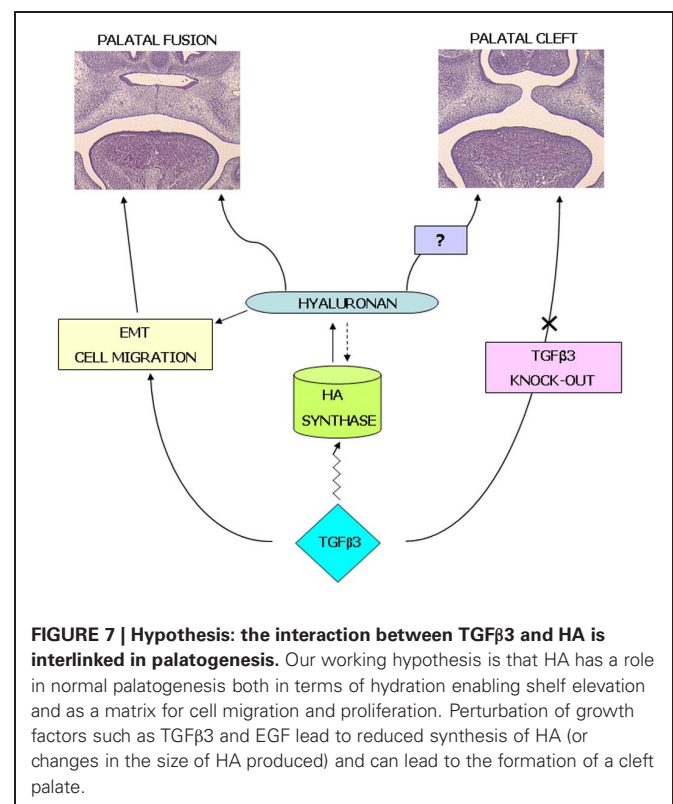
Many studies have focused on a number of human populations to establish whether the role of TGF β 3 in cleft palate development can be applicable to humans. These studies report conflicting results, with both positive relationships (Maestri et al., 1997; Romitti et al., 1999; Mitchell et al., 2001; Sato et al., 2001; Beaty et al., 2002; Jugessur et al., 2003; Kim et al., 2003; Vieira et al., 2003; Ichikawa et al., 2006; Suazo et al., 2010) and no relationship

reported (Lidral et al., 1997; Tanabe et al., 2000; Beaty et al., 2001; Suzuki et al., 2004). Thus, it could be that TGF β 3 is of importance in cleft palate development but only in certain populations.

CONCLUSION AND FUTURE WORK

The mechanisms that regulate shelf elevation are very important as once the palatal shelves have changed orientation, they must meet in the midline of the embryo in preparation for fusion. It is likely that HA is involved in the increase in length of the palatal shelves required for them to meet, and thus it could follow that molecules involved in fusion have a role in regulating HA synthesis. Many molecular factors have been suggested as having a role in fusion, especially those with adhesion qualities, with a review by Gritli-Linde (2007), listing over 70 genetic mutations that have been shown to produce cleft palates. The interaction between HA and TGF β 3 is summarized in our hypothesis (Figure 7), where HA has a multi-functional role as a substrate that can bind water, growth factors/proteins, cells and allows for normal development to take place. However, changes in HA expression or its role can lead to the development of cleft palate.

Future experiments will be to investigate Has expression in the same strain of TGF β 3 homozygous null mouse at a later point in development to assess whether the palatal shelves do eventually meet in the midline. The link between Has expression and TGF β 3 in the MF1 strain mouse, where the palatal shelves meet in the midline but do not fuse, will also be studied. This will establish whether there is a difference in Has expression in different phenotypes of cleft palate, which have developed due to absence of TGF β 3.



The expression of Has2 can be modulated by exogenous factors. We are in the process of creating a series of cell lines where the expression of TGF β 3 has been silenced by shRNA. This will enable examination, *in vitro*, of the factors and mechanisms controlling Has2 synthesis and also environmental factors such as alcohol and nicotine. This *in vitro* model is currently being employed to study the signaling pathways important in TGF β 3 activation of the TGF β receptors.

REFERENCES

- Aruffo, A., Stamenkovic, I., Melnick, M., Underhill, C. B., and Seed, B. (1990). CD44 is the principal cell surface receptor for hyaluronate. *Cell* 61, 1303–1313.
- Bachem, M. G., Riess, U., Melchior, R., Sell, K.-M., and Gressner, A. M. (1989). Transforming growth factors (TGF α and TGF β) stimulate chondroitin sulfate and hyaluronate synthesis in cultured rat liver fat storing cells. *FEBS Lett.* 257, 134–137.
- Beaty, T. H., Hetmanski, J. B., Zeiger, J. S., Fan, Y. T., Liang, K. Y., VanderKolk, C. A., et al. (2002). Testing candidate genes for nonsyndromic oral clefts using a case-parent trio design. *Genet. Epidemiol.* 22, 1–11.
- Beaty, T. H., Wang, H., Hetmanski, J. B., Fan, Y. T., Zeiger, J. S., Liang, K. Y., et al. (2001). A case-control study of nonsyndromic oral clefts in Maryland. *Ann. Epidemiol.* 11, 434–442.
- Christensen, K. (2002). “Methodological issues in epidemiological studies of oral clefts,” in *Cleft Lip and Palate: From Origin to Treatment*, ed D. F. Wyszynski (New York, NY: Oxford University Press), 101–107.
- Diewert, V. M., and Tait, B. (1979). Palatal process movement in the rat as demonstrated in frozen sections. *J. Anat.* 128, 609–618.
- Ellis, I., Banyard, J., and Schor, S. L. (1997). Differential response of fetal and adult fibroblasts to cytokines: cell migration and hyaluronan synthesis. *Development* 124, 1593–1600.
- Ellis, I., Banyard, J., and Schor, S. L. (1999). Motogenic and biosynthetic response of adult skin fibroblasts to TGF-b isoforms (-1, -2, and -3) determined by ‘tissue response unit’: role of cell density and substratum. *Cell Biol. Int.* 23, 593–602.
- Ellis, I., Grey, A. M., Schor, A. M., and Schor, S. L. (1992). Antagonistic effects of transforming growth factor beta and MSF on fibroblast migration and hyaluronic acid synthesis: possible implications for wound healing. *J. Cell Sci.* 102, 447–456.
- Ellis, I. R., Jones, S. J., Lindsay, Y., Schor, A. M., Schor, S. L., and Leslie, N. (2010). Migration Stimulating Factor (MSF) promotes fibroblast migration by inhibiting AKT. *Cell. Signal.* 22, 1655–1659.
- Ellis, I. R., and Schor, S. L. (1998). Differential motogenic and biosynthetic response of fetal and adult skin fibroblasts to TGF-b isoforms. *Cytokine* 10, 281–289.
- Ellis, I. R., Schor, A. M., and Schor, S. L. (2007). EGF and TGF α motogenic activities are mediated by the EGF receptor via distinct matrix dependent mechanisms. *Exp. Cell Res.* 313, 732–741.
- Ferguson, M. W. J. (1988). Palate development. *Development* 103, 41–60.
- Fitzpatrick, D. R., Denhez, F., Kondaiah, P., and Akhurst, R. J. (1990). Differential expression of TGF beta isoforms in murine palatogenesis. *Development* 109, 585–595.
- Gato, A., Martinez, M. L., Tudela, C., Alonso, I., Moro, J. A., Formoso, M. A., et al. (2002). TGF-beta \sim 3 induced chondroitin sulphate proteoglycan mediates palatal shelf adhesion. *Dev. Biol.* 250, 393–405.
- Greene, R. M., and Kochhar, D. M. (1973). Spatial relations in the oral cavity of cortisone-treated mouse fetuses during the time of secondary palate closure. *Teratology* 8, 153–161.
- Gritli-Linde, A. (2007). Molecular control of secondary palate development. *Dev. Biol.* 301, 309–326.
- Hellstrom, S., and Laurent, C. (1987). Hyaluronan and healing of tympanic membrane perforations. An experimental study. *Acta Otolaryngol. Suppl.* 442, 54–61.
- Ichikawa, E., Watanabe, A., Nakano, Y., Akita, S., Hirano, A., Kinoshita, A., et al. (2006). PAX9 and TGF β 3 are linked to susceptibility to nonsyndromic cleft lip with or without cleft palate in the Japanese: population-based and family-based candidate gene analyses. *J. Hum. Genet.* 51, 38–46.
- Itano, N., Sawai, T., Yoshida, M., Lenas, P., Yamada, Y., Imagawa, M., et al. (1999). Three isoforms of mammalian hyaluronan synthases have distinct enzymatic properties. *J. Biol. Chem.* 274, 25085–25092.
- Jacobson, A., Brinck, J., Briskin, M. J., Spicer, A. P., and Heldin, P. (2000). Expression of human hyaluronan synthases in response to external stimuli. *Biochem. J.* 348, 29–35.
- Jin, J.-Z., Tan, M., Warner, D. R., Darling, D. S., Higashi, Y., Gridley, T., et al. (2010). Mesenchymal cell remodeling during mouse secondary palate reorientation. *Dev. Dyn.* 239, 2110–2117.
- Jugessur, A., Lie, R. T., Wilcox, A. J., Murray, J. C., Taylor, J. A., Saugstad, O. D., et al. (2003). Variants of developmental genes (TGFA, TGF β 3, and MSX1) and their associations with orofacial clefts: a case-parent triad analysis. *Genet. Epidemiol.* 24, 230–239.
- Jones, S. J., Florence, M. M., Ellis, I. R., Kankova, A. K., Schor, S. L., and Schor, A. M. (2007). Co-expression by keratinocytes of migration stimulating factor (MSF) and a functional inhibitor of its bioactivity (MSFI). *Exp. Cell Res.* 313, 4145–4157.
- Kaartinen, V., Chui, X.-M., Heisterkamp, N., Groeffen, J., and Schular, C. F. (1997). Transforming growth factor- β 3 regulates transdifferentiation of medial edge epithelium during palatal fusion and associated degradation of the basement membrane. *Dev. Dyn.* 209, 255–260.
- Karousou, E., Kamiryo, M., Skandalis, S. S., Ruusala, A., Asteriou, T., Passi, A., et al. (2010). The activity of hyaluronan synthase 2 is regulated by dimerization and ubiquitination. *J. Biol. Chem.* 285, 23647–23654.
- Kim, M. H., Kim, H. J., Choi, J. Y., and Nahm, D. S. (2003). Transforming growth factor-beta3 gene SfaN1 polymorphism in Korean nonsyndromic cleft lip and palate patients. *J. Biochem. Mol. Biol.* 36, 533–537.
- Klemke, R. L., Yebra, M., Bayna, E. M., and Cheresch, D. A. (1994). Receptor Tyrosine signalling required for Integrin α v β 5 directed cell motility but not adhesion on vitronectin. *J. Cell Biol.* 127, 859–866.
- Laemmli, U. K. (1970). Cleavage of structural proteins during the assembly of the head of bacteriophage T4. *Nature* 227, 680–685.
- Laurent, T. C., and Fraser, J. R. (1992). Hyaluronan. *FASEB J.* 6, 2397–2404.
- Lidral, A. C., Murray, J. C., Buetow, K. H., Basart, A. M., Schearer, H., Shiang, R., et al. (1997). Studies of the candidate genes TGF β 2, MSX1, TGFA, and TGF β 3 in the etiology of cleft lip and palate in the Philippines. *Cleft Palate Craniofac. J.* 34, 1–6.
- Longaker, M. T., Chiu, E. S., Adzick, S., Stern, M., Harrison, M. R., and Stern, R. (1991). Studies in fetal wound healing. V. A prolonged presence of hyaluronic acid characterizes fetal wound fluid. *Ann. Surg.* 213, 292–296.
- Maestri, N. E., Beaty, T. H., Hetmanski, J., Smith, E. A., McIntosh, I., Wyszynski, D. F., et al. (1997). Application of transmission disequilibrium tests to nonsyndromic oral clefts: including candidate genes and environmental exposures in the models. *Am. J. Med. Genet.* 73, 337–344.
- Marcusson, A., Akerlind, I., and Paulin, G. (2001). Quality of life in adults with repaired complete cleft lip and palate. *Cleft Palate Craniofac. J.* 38, 379–385.
- Martinez-Alvarez, C., Tudela, C., Pérez-Miguelansanz, J., O’Kane, S., Puerta, J., and Ferguson, M. W. J. (2000). Medial edge epithelial cell fate during palatal fusion. *Dev. Biol.* 220, 343–357.
- Massague, L. (1998). TGF-b signal transduction. *Ann. Rev. Biochem.* 67, 753–791.
- Meng, L., Bian, Z., Torenzma, R., and Von Den Hoff, J. W. (2009). Biological mechanisms in palatogenesis and cleft palate. *J. Dent. Res.* 88, 22–33.

- Michael, D. R., Phillips, A. O., Krupa, A., Martin, J., Redman, J. E., Altaher, A., et al. (2011). The human hyaluronan synthase 2 (HAS2) gene and its natural antisense RNA exhibit coordinated expression in the renal proximal tubular epithelial cell. *J. Biol. Chem.* 286, 19523–19532.
- Miettinen, P. J., Ebner, R., Lopez, A. R., and Derynck, R. (1994). TGF- β induced transdifferentiation of mammary epithelial cells to mesenchymal cells: involvement of type I receptors. *J. Cell Biol.* 127, 2021–2036.
- Mitchell, L. E., Murray, J. C., O'Brien, S., and Christensen, K. (2001). Evaluation of two putative susceptibility loci for oral clefts in the Danish population. *Am. J. Epidemiol.* 153, 1007–1015.
- Moffatt, P., Lee, E. R., St-Jacques, S. B., Matsumoto, K., Yamaguchi, Y., and Roughley, P. J. (2011). Hyaluronan production by means of Has2 gene expression in chondrocytes is essential for long bone development. *Dev. Dyn.* 240, 404–412.
- Monslow, J., Williams, J. D., Norton, N., Guy, C. A., Price, I. K., Coleman, S. L., et al. (2003). The human hyaluronan synthase genes: genomic structures, proximal promoters and polymorphic microsatellite markers. *Int. J. Biochem. Cell Biol.* 35, 1272–1283.
- Mossey, P. A., Little, J., Munger, R. G., Dixon, M. J., and Shaw, W. C. (2009). Cleft lip and palate. *Lancet* 374, 1773–1785.
- Nawshad, A., and Hay, E. D. (2003). TGF β 3 signaling activates transcription of the LEF1 gene to induce epithelial mesenchymal transformation during mouse palate development. *J. Cell Biol.* 193, 1291–1301.
- Nawshad, A., Lagamba, D., Polad, A., and Hay, E. D. (2005). Transforming growth factor beta signaling during epithelial-mesenchymal transformation: implications for embryogenesis and tumor metastasis. *Cells Tissues Organs* 179, 11–23.
- Nishida, Y., Knudson, W., Knudson, C. B., and Ishiguro, N. (2005). Antisense inhibition of hyaluronan synthase-2 in human osteosarcoma inhibits hyaluronan retention and tumorigenicity. *Exp. Cell Res.* 307, 194–203.
- Proetz, G., Pawlowski, S. A., Wiles, M. V., Yin, M., Boivin, G. P., Howles, P. N., et al. (1995). Transforming growth factor- β 3 is required for secondary palate fusion. *Nat. Genet.* 11, 409–414.
- Recklies, A. D., White, C., Melching, L., and Roughley, P. J. (2001). Differential regulation and expression of hyaluronan synthesis in human articular chondrocytes, synovial cells and osteosarcoma cells. *Biochem. J.* 354, 17–24.
- Romitti, P. A., Lidral, A. C., Munger, R. G., Daack-Hirsch, S., Burns, T. L., and Murray, J. C. (1999). Candidate genes for nonsyndromic cleft lip and palate and maternal cigarette smoking and alcohol consumption: evaluation of genotype-environmental interactions from a population-based case-control study of orofacial clefts. *Teratology* 59, 39–50.
- Rotzer, D., Roth, M., Lutz, M., Lindemann, D., Sebald, W., and Knaus, P. (2001). Type III TGF- β receptor-independent signalling of TGF β 2 via T β 2RII-B, an alternatively spliced TGF- β type II receptor. *EMBO J.* 20, 480–490.
- Sato, F., Natsume, N., Machido, J., Suzuki, S., and Kawai, T. (2001). Association between transforming growth factor beta 3 and cleft lip and/or palate in the Japanese population. *Plast. Reconstr. Surg.* 107, 1909–1910.
- Scott, J. E., Cummings, C., Brass, A., and Chen, Y. (1991). Secondary and tertiary structures of hyaluronan in aqueous solution, investigated by rotary shadowing-electron microscopy and computer simulation. Hyaluronan is a very efficient network-forming polymer. *Biochem. J.* 274, 699–705.
- Shah, M., Foreman, D. M., and Ferguson, M. W. J. (1995). Neutralisation of TGF- β 1 and TGF- β 2 or exogenous addition of TGF- β 3 to cutaneous rat wounds reduces scarring. *J. Cell Sci.* 108, 985–1002.
- Smith, M. M., and Ghosh, P. (1987). The synthesis of hyaluronic acid by human synovial fibroblasts is influenced by the nature of the hyaluronate in the extracellular environment. *Rheumatol. Int.* 7, 113–122.
- Spicer, A. P., Seldin, M. F., Olsen, A. S., Brown, N., Wells, D. E., Doggett, N. A., et al. (1997). Chromosomal localization of the human and mouse hyaluronan synthase genes. *Genomics* 41, 493–497.
- Suazo, J., Santos, J. L., Scapoli, L., Jara, L., and Blanco, R. (2010). Association between TGF β 3 and nonsyndromic cleft lip with or without cleft palate in a Chilean population. *Cleft Palate Craniofac. J.* 47, 513–517.
- Sugiyama, Y., Shimada, A., Sayo, T., Sakai, S., and Inoue, S. (1998). Putative hyaluronan synthase mRNA are expressed in mouse skin and TGF- β upregulates their expression in cultured human skin cells. *J. Invest. Dermatol.* 110, 116–121.
- Suzuki, Y., Jezewski, P. A., Machda, J., Watanabe, Y., Shi, M., Cooper, M., et al. (2004). In a Vietnamese population, MSX1 variants contribute to cleft lip and palate. *Genet. Med.* 6, 117–125.
- Tanabe, A., Taketani, S., Endo-Ichikawa, Y., Tokunaga, R., Ogawa, Y., and Hiramoto, M. (2000). Analysis of the candidate genes responsible for non-syndromic cleft lip and palate in Japanese people. *Clin. Sci.* 99, 105–111.
- Tien, J. Y. L., and Spicer, A. P. (2005). Three vertebrate hyaluronan synthases are expressed during mouse development in distinct spatial and temporal patterns. *Dev. Dyn.* 233, 130–141.
- Ventura, C. L., Cartee, R. T., Forsee, W. T., and Yother, J. (2006). Control of capsular polysaccharide chain length by UDP-sugar substrate concentrations in *Streptococcus pneumoniae*. *Mol. Microbiol.* 61, 723–733.
- Towbin, H., Staehelin, T., and Gordon, J. (1979). Electrophoretic transfer of proteins from polyacrylamide gels to nitrocellulose sheets: procedure and some applications. *Proc. Natl. Acad. Sci. U.S.A.* 76, 4350–4354.
- Underhill, C. B., and Toole, B. P. (1979). Binding of hyaluronate to the surface of cultured cells. *J. Cell Biol.* 82, 475–484.
- Vieira, A. R., Orioli, I. M., Castilla, E. E., Cooper, M. E., Marazita, M. L., and Murray, J. C. (2003). MSX1 and TGFB3 contribute to clefting in South America. *J. Dent. Res.* 82, 289–292.
- Weigel, P. H., Hascall, V. C., and Tammi, M. (1997). Hyaluronan synthases. *J. Biol. Chem.* 272, 13997–14000.
- Xu, X., Han, J., Ito, H., Bringas, P., Urata, M. M., and Chai, Y. (2006). Cell autonomous requirement for TGF β 2 in the disappearance of medial edge epithelium during palatal fusion. *Dev. Biol.* 297, 238–248.
- Yamada, Y., Itano, N., Hata, K.-I., Ueda, M., and Kimata, K. (2004). Differential regulation by IL- β and EGF of expression of three different hyaluronan synthases in oral mucosal epithelial cells and fibroblasts and dermal fibroblasts: quantitative analysis using real-time RT-PCR. *J. Invest. Dermatol.* 122, 631–639.
- Yu, W., Ruest, L. B., and Svoboda, K. K. H. (2009). Regulation of epithelial-mesenchymal transition in palatal fusion. *Exp. Biol. Med.* 234, 483–491.

Conflict of Interest Statement: The authors declare that the research was conducted in the absence of any commercial or financial relationships that could be construed as a potential conflict of interest.

Received: 31 May 2012; accepted: 09 January 2013; published online: 04 February 2013.

Citation: Galloway JL, Jones SJ, Mossey PA and Ellis IR (2013) The control and importance of hyaluronan synthase expression in palatogenesis. *Front. Physiol.* 4:10. doi: 10.3389/fphys.2013.00010

This article was submitted to *Frontiers in Craniofacial Biology*, a specialty of *Frontiers in Physiology*.

Copyright © 2013 Galloway, Jones, Mossey and Ellis. This is an open-access article distributed under the terms of the Creative Commons Attribution License, which permits use, distribution and reproduction in other forums, provided the original authors and source are credited and subject to any copyright notices concerning any third-party graphics etc.