

The genetically encoded tool set for investigating cAMP: more than the sum of its parts

*Neha Patel and Matthew G. Gold**

Department of Neuroscience, Physiology and Pharmacology, University College London, London, UK

OPEN ACCESS

Edited by:

*Apostolos Zarros,
University of Glasgow, UK*

Reviewed by:

*Kjetil Taskén,
University of Oslo, Norway
Robert David Lane,
Monash University, Australia*

*Correspondence:

*Matthew G. Gold,
Department of Neuroscience,
Physiology and Pharmacology,
University College London, Gower
Street, London WC1E 6BT, UK
m.gold@ucl.ac.uk*

Specialty section:

*This article was submitted to
Experimental Pharmacology and Drug
Discovery,
a section of the journal
Frontiers in Pharmacology*

Received: 18 May 2015

Accepted: 24 July 2015

Published: 06 August 2015

Citation:

*Patel N and Gold MG (2015)
The genetically encoded tool set
for investigating cAMP: more than
the sum of its parts.
Front. Pharmacol. 6:164.
doi: 10.3389/fphar.2015.00164*

Intracellular fluctuations of the second messenger cyclic AMP (cAMP) are regulated with spatial and temporal precision. This regulation is supported by the sophisticated arrangement of cyclases, phosphodiesterases, anchoring proteins, and receptors for cAMP. Discovery of these nuances to cAMP signaling has been facilitated by the development of genetically encodable tools for monitoring and manipulating cAMP and the proteins that support cAMP signaling. In this review, we discuss the state-of-the-art in development of different genetically encoded tools for sensing cAMP and the activity of its primary intracellular receptor protein kinase A (PKA). We introduce sequences for encoding adenylyl cyclases that enable cAMP levels to be artificially elevated within cells. We chart the evolution of sequences for selectively modifying protein-protein interactions that support cAMP signaling, and for driving cAMP sensors and manipulators to different subcellular locations. Importantly, these different genetically encoded tools can be applied synergistically, and we highlight notable instances that take advantage of this property. Finally, we consider prospects for extending the utility of the tool set to support further insights into the role of cAMP in health and disease.

Keywords: cAMP, PKA, AKAP, adenylyl cyclase, phosphodiesterase

Introduction

The discovery that some hormones elevate the second messenger cyclic AMP (cAMP) without triggering canonical effects such as increased phosphorylase activity (Keely, 1979; Hayes et al., 1980) indicated that cAMP may be compartmentalized in cells (Edwards et al., 2012). Studies of cAMP compartmentalization rely upon methods to sense and manipulate signaling enzyme activities in space and time (Scott and Pawson, 2009). The first sensor of intracellular cAMP ('FICRhR') was constructed by fluorescein-labeling PKA catalytic subunits and rhodamine-labeling the regulatory subunits of the tetrameric kinase (Adams et al., 1991). Release of the catalytic subunits upon binding of cAMP to the regulatory subunits can be detected as a reduction in Förster resonance energy transfer (FRET; Adams et al., 1991). The FICRhR probe was revolutionary as it enabled the first visualizations of cAMP compartmentalization (Bacskai et al., 1993; Hempel et al., 1996). However, the sensor must be microinjected since its fluorescent labels are not genetically encoded. This technical hurdle has limited the influence of the FICRhR probe.

The subsequent development of genetically encoded sensors of cAMP (Zaccolo et al., 2000) and PKA activity (Zhang et al., 2001), in tandem with methods for manipulating both the enzyme that synthesizes cAMP – adenylyl cyclase (AC) – and molecular interactions that support cAMP signaling, has initiated a new wave of discoveries concerning cAMP signaling

(Edwards et al., 2012). Studies with these novel tools have helped to establish the necessity for targeting PKA to its substrates by anchoring to A-kinase anchoring proteins (AKAPs; Rosenmund et al., 1994; Zhang et al., 2001; Di Benedetto et al., 2008). The tools have been applied to reveal a small nuclear population of anchored PKA (Sample et al., 2012). Furthermore, they have illuminated how PKA interacts spatiotemporally with phosphodiesterase (PDE) enzymes that degrade cAMP (Willoughby et al., 2006), with the exchange-protein activated by cyclic AMP (Epac; Dodge-Kafka et al., 2005), and with Ca^{2+} signals (Cooper and Tabbasum, 2014). This genetically encoded tool set has also been applied to establish a role for localized cAMP signaling in diseases (Gold et al., 2013b) such as heart failure (Nikolaev et al., 2010), muscular dystrophy (Roder et al., 2009), diabetes (Zhang et al., 2005), breast cancer (Hansen et al., 2009), and adrenal Cushing's syndrome (Beuschlein et al., 2014).

In this review, we introduce genetically encoded sensors of cAMP and PKA activity, before discussing tools based upon ACs. We describe sequences that are available for targeting such tool proteins to specific sub-cellular locations and for modifying protein interactions involving cAMP signaling proteins. Importantly, further functionality can arise when the different classes of tools are combined, and we highlight studies that exploit this kind of synergy. Finally, we consider how the tool set might be extended and combined in novel ways to enable further advances in the understanding of cAMP signaling.

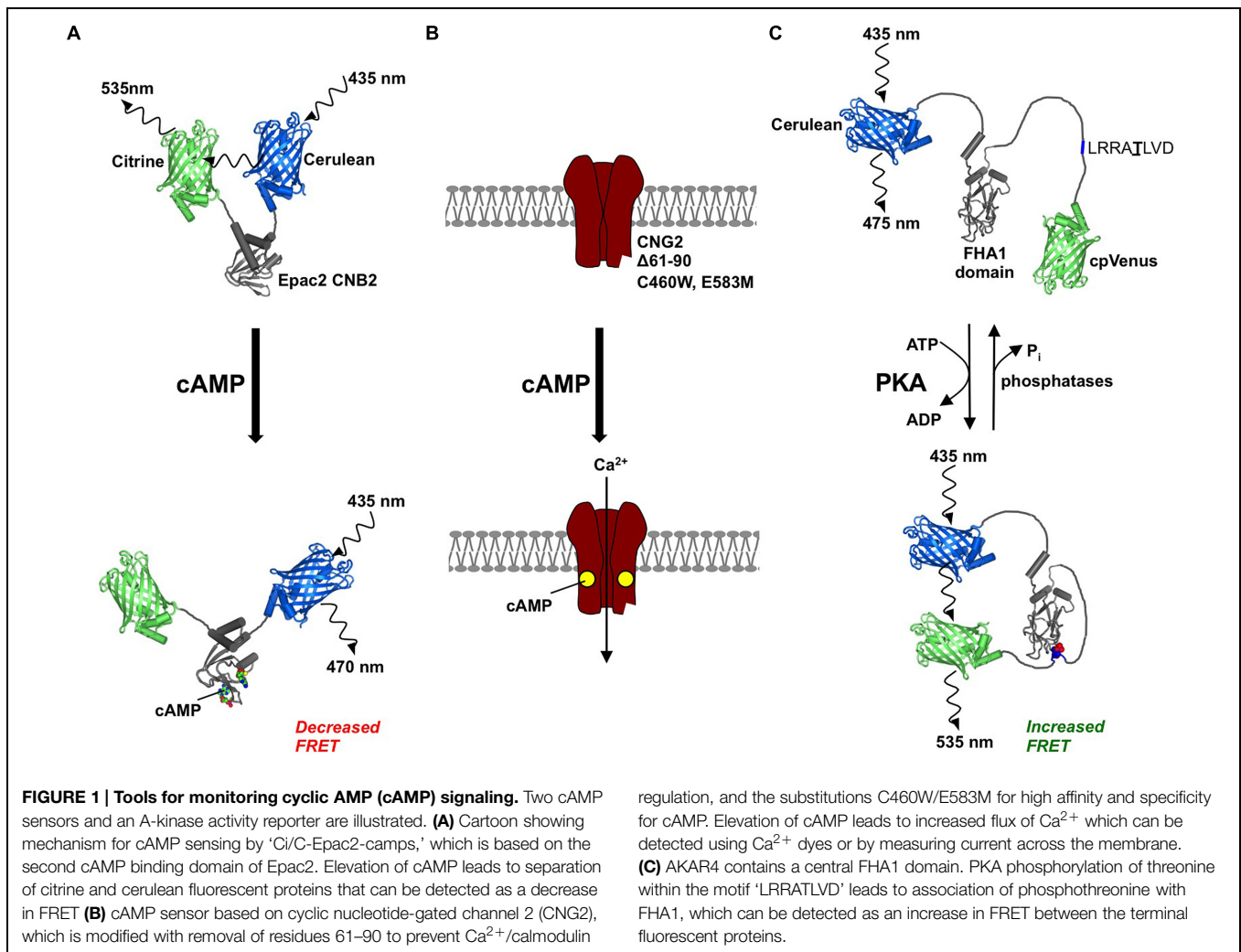
Genetically Encoded Sensors for Monitoring cAMP Dynamics

There are three types of cAMP receptors in higher organisms: PKAs, Epacs, and cyclic-nucleotide-gated channels (CNGCs). Genetically encoded sensors are available that derive from each class of endogenous cAMP receptor (Willoughby and Cooper, 2008). Sensors derived from PKAs and Epacs rely upon fusions to variants of green fluorescent protein (GFP) that undergo decreased FRET upon elevation of cAMP. Sensors derived from CNGCs can also employ measurements using patch clamp electrophysiology to detect changes in conductance upon binding of cAMP to the channel. The first genetically encoded FRET-based cAMP sensor was constructed by fusing an improved GFP to the C-terminus of the PKA catalytic subunit and a blue GFP variant (EBFP) to the C-terminus of type-II regulatory (RII) PKA subunits (Zaccolo et al., 2000). Respective substitution of EBFP and GFP with cyan and yellow fluorescent proteins yielded an improved sensor that is less prone to photobleaching (Zaccolo and Pozzan, 2002). This allowed real time imaging of cAMP fluctuations in cardiomyocytes in response to the β -adrenergic agonist norepinephrine or the broad spectrum PDE inhibitor isobutyl-methyl-xanthine (IBMX), and helped to establish that type IV PDEs are the critical PDE class for degrading cAMP following activation with norepinephrine in cardiomyocytes (Mongillo et al., 2004).

The discovery of Epac1 and Epac2 (de Rooij et al., 1998; Kawasaki et al., 1998) opened the door for development of unimolecular cAMP sensors based upon these cAMP-dependent

GTPase activators (DiPilato et al., 2004; Nikolaev et al., 2004; Ponsioen et al., 2004). Unimolecular sensors based on Epacs exhibit higher FRET efficiency (increase in FRET signal from maximal to minimal cAMP) of $\sim 20\text{--}30\%$ compared to $\sim 8\%$ for multimolecular PKA-based sensors. Epac probes also show better temporal resolution (Nikolaev et al., 2004), and there are no concerns regarding balancing expression of the donor and acceptor fluorophores in unimolecular probes. For these reasons, Epac probes are now the most popular option for sensing cAMP fluctuations. The latest optimized Epac-based probes include pH-insensitive Ci/Ce Epac2-camps (Everett and Cooper, 2013) (**Figure 1A**) and the Epac1-based probes ICUE3 (DiPilato and Zhang, 2009) and $^T\text{Epac}^{\text{VV}}$ (Klarenbeek et al., 2011; Li et al., 2015) although the original probes exhibit good FRET efficiency and are still popular. CNGC-based cAMP sensors excel in temporal resolution of cAMP fluctuations (Rich et al., 2000; Fagan et al., 2001). The first example of this approach exploited rat CNG2 expression in human embryonic kidney-293 (HEK-293) cells (Rich et al., 2000). Measurement of Ca^{2+} flux through the channels as a proxy for cAMP elevation using electrophysiology supported the existence of cellular cAMP microdomains. Mutations can be incorporated into the CNG2 to tailor it for sensing cAMP: C460W improves cAMP sensitivity, E583M improves cAMP specificity over cGMP, and removal of residues 61-90 abrogates channel regulation by Ca^{2+} /calmodulin (Rich et al., 2001) (**Figure 1B**). A C460W/E583M double CNG2 mutant was used as a sensor to reveal that both G protein coupled receptor kinases (GRKs) and PKA stimulate PDE degradation of cAMP following $\beta 2$ -AR simulation of HEK-293 cells (Xin et al., 2008). A common way to apply CNG2 is to combine expression of the channel with the Ca^{2+} dye Fura-2, allowing measurement of Ca^{2+} influx by imaging rather than electrophysiology (Fagan et al., 2001; Rich et al., 2001, 2007; Rochais et al., 2004). For example, the E583M CNG2 variant was applied in this way to establish the necessity of PKA anchoring for negative feedback through PKA activation of type IV PDEs (Willoughby et al., 2006). CNGCs can also be adapted as FRET sensors (Nikolaev et al., 2006). The hyperpolarization-activated CNG2 (HCN2) has a higher sensitivity than CNG2, and exhibits as wide a dynamic range as a cAMP FRET sensor when YFP and CFP are fused either side of a single HCN2 cAMP binding domain (Nikolaev et al., 2006).

Genetically encoded cAMP probes have been applied to investigate different facets of cAMP signaling. For example, they have helped build upon initial observations of cAMP oscillations in Brooker (1973) and Gorbunova and Spitzer (2002). Epac-based probes demonstrate that cAMP oscillations can be evoked in cell lines including MIN6 cells (Landa et al., 2005) and HEK293 cells (Willoughby and Cooper, 2006). cAMP oscillations have also been monitored in β -cells using evanescent-wave-microscopy in combination with fluorescently labeled RII-CAAX and C subunits (Dyachok et al., 2008). This approach shows that Ca^{2+} amplifies but is not essential for glucose-induced cAMP oscillations in β -cells (Dyachok et al., 2008). Ca^{2+} typically oscillates in tandem with cAMP, and a related area of focus has been the basis of interplay between cAMP and



Ca²⁺ signals at the level of signaling proteins. Epac probes reveal that distinct pools of cAMP center on specific isoforms of AC (Wachten et al., 2010), with the Ca²⁺-activated cyclase AC8 occupying a prominent role in linking Ca²⁺ signals to localized cAMP elevation (Willoughby et al., 2010; Ayling et al., 2012).

A key advantage of genetically encoding sensors is that transgenic animals expressing the sensors can be generated. Imaging of cAMP fluctuations has been achieved in pancreatic islets (Kim et al., 2008) using genetically engineered mice that selectively express a PKA-based cAMP sensor in pancreatic islets. This approach was exploited to show that glucose triggers cAMP elevation independent of Ca²⁺ (Kim et al., 2008). Another study monitored cAMP changes upon activation of either β 1 or β 2 adrenergic receptors within small sarcolemmal areas by employing adrenergic receptor knockout mice transgenically expressing Epac2-camps (Nikolaev et al., 2010). This study revealed that β 2 adrenergic receptors are restricted to deep transverse tubules (Nikolaev et al., 2010). Development of transgenic fruit flies expressing cAMP sensors (Lissandron et al., 2007) has also proved to be useful. In particular, *Drosophila*

expressing Epac1-camps with an upstream activating sequence for GAL4 (Shafer et al., 2008) have enabled detailed investigation of how neuropeptides including pigment dispersing factor modulate cAMP in neurons during circadian rhythms (Duvall and Taghert, 2012; Pirez et al., 2013; Vecsey et al., 2014; Yao and Shafer, 2014). In sum, an impressive array of sensors and delivery options are now available for monitoring intracellular cAMP fluctuations.

Fluorescence-Based Sensors for Monitoring PKA Activity

One potential limitation of cAMP sensors is that they may not reflect cAMP receptor activation if the receptors and active cyclase are not co-localized. For PKA, genetically encoded A-kinase activity reporters (AKARs) may be utilized to monitor kinase activity more directly (Mehta and Zhang, 2011). The first AKAR was constructed by placing YFP and CFP either side of a PKA consensus phosphorylation sequence derived from Kemptide and the phospho-serine/threonine-binding protein

14-3-3 τ (Zhang et al., 2001). Phosphorylation at the PKA consensus sequence causes association of the central elements that may be detected as a concomitant increase in FRET (Zhang et al., 2001). A second-generation sensor, AKAR2, incorporates a Forkhead-associated (FHA) domain in tandem with a lower affinity PKA recognition site. This modification improves the reversibility of the reporter (Zhang et al., 2005). This reporter was first applied to investigate interaction of insulin and isoproterenol stimulation of adipocytes. Using AKAR2, the authors found that chronic insulin treatment delayed PKA activation following addition of low concentrations of the β -AR agonist isoproterenol (Zhang et al., 2005). Conversely, PKA response to stimulation with either forskolin or caged cAMP was not affected by prior chronic insulin treatment. This suggested that insulin reduces PKA localization to a pool of cAMP associated with β -ARs. This notion was corroborated by anti- β -AR immunoprecipitation experiments that revealed decreased interaction of PKA RII subunits with β -ARs following dual treatment with insulin and isoproterenol (Zhang et al., 2005). This detail might have been missed if a cAMP sensor had been employed rather than AKAR2. Systematic improvement of AKAR reporters is ongoing (Liu et al., 2011; Oldach and Zhang, 2014). The latest reporter, AKAR4, features the fluorescent protein variants Cerulean and cpVenus (Depry et al., 2011) (Figure 1C).

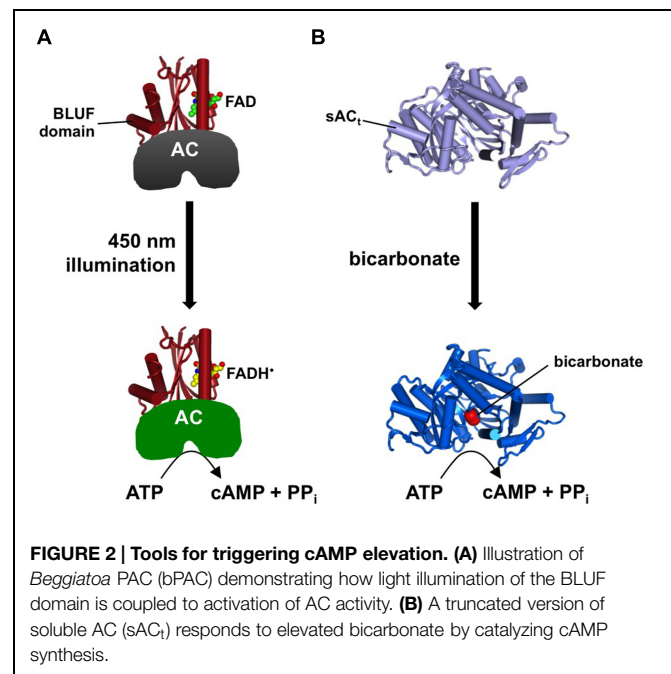
A-kinase activity reporters have also been widely applied. For example, they have been used to validate stapled PKA anchoring disruptor peptides (Wang et al., 2014), and to confirm that Leu206Arg substitution in α subunits (associated with Adrenal Cushing's Syndrome) leads to constitutive kinase activation (Beuschlein et al., 2014). They are often utilized in parallel with cAMP sensors, for example, in imaging fluctuations of cAMP and PKA activity induced by neural activity in retinal cells (Dunn et al., 2006); to investigate cAMP/PKA dynamics at the centrosome (Terrin et al., 2012); and in the study of neurite outgrowth including a forskolin-coated glass bead contact procedure for cultured hippocampal neurons (Shelly et al., 2010). As with genetically encoded cAMP sensors, it is possible to express AKARs in transgenic animals. For example, PKA activity dynamics have been imaged in *Drosophila* expressing AKAR2 (Gervasi et al., 2010). In this study, Kamioka et al. (2012) performed crosses with learning and memory deficient mutant fly lines to establish that the AC Rutabaga acts as a coincidence detector during aversive and appetitive learning (Gervasi et al., 2010). AKAR-expressing mice have also been developed, and exploited to image real-time PKA activity in mouse epidermis and small intestine (Kamioka et al., 2012). These whole-organism studies underline the benefits of genetically encoding reporters in comparison to techniques that rely upon microinjection (Adams et al., 1991).

Tools for Manipulating Adenylyl Cyclase Activity

The ability to control cAMP elevations with spatiotemporal precision can help to reveal how cAMP signaling is organized in

time and space (Scott and Pawson, 2009). In analogous fashion to the discovery of light-activated channelrhodopsins for artificially depolarizing cells (Nagel et al., 2003), photo-active adenylyl cyclases (PACs) have been identified in photo-sensitive microbes (Iseki et al., 2002; Ryu et al., 2010; Stierl et al., 2011). Advantages of genetically encoded PACs over cAMP uncaging approaches (Ponsioen et al., 2004; Saucerman et al., 2006) include the ability to deliver into whole animals, and the option to localize the PAC within cells by fusion to subcellular targeting sequences. The first PAC to be characterized and utilized was discovered in *Euglena*. This unicellular flagellate relies on a PAC in photophobic behavior (Iseki et al., 2002). *Euglena* PAC comprises two subunits, PAC α and PAC β . Each subunit consists of two blue light receptor using flavin adenine nucleotide (BLUF) domains paired with two AC domains. Activation of the BLUF domains with blue light leads to a conformational change that activates the AC domains. Both PAC subunits respond to blue light with a maximal increase in AC activity of \sim 80-fold. The PAC α subunit is more active than PAC β in both light and dark conditions (Iseki et al., 2002), so applications of *Euglena* PAC have utilized the α subunit (Bucher and Buchner, 2009; Bellmann et al., 2010; Weissenberger et al., 2011).

Smaller PACs have subsequently been discovered in species other than *Euglena*, including *Beggiatoa* PAC (bPAC; Ryu et al., 2010; Stierl et al., 2011) (Figure 2A). bPAC comprises 350 residues, which facilitates transgenic delivery in comparison to PAC α (1019 residues). bPAC also exhibits better responsiveness to blue light than PAC α , and cyclase activity decreases faster for bPAC upon return to the dark (Ryu et al., 2010; Stierl et al., 2011). A different class of PAC has been identified in *Microcoleus* (mPAC) that relies on a blue light-responsive light oxygen voltage domain coupled to an AC domain (Raffelberg et al., 2013). mPAC compares favorably to bPAC when expressed



in vivo, although its responsiveness to blue light is worse *in vitro*, suggesting that a cellular co-factor may support its proper function (Raffelberg et al., 2013). Both bPAC and mPAC require lower light intensity for cyclase activation than PAC α (Ryu et al., 2010; Stierl et al., 2011; Raffelberg et al., 2013), so are better suited for application in tissue samples where light penetration is a challenge. A noteworthy alternative to PACs is to employ a C-terminally truncated version of soluble AC (sAC_t) that can be activated by addition of bicarbonate (Sample et al., 2012) (**Figure 2B**). This approach is compatible with simultaneous monitoring of cAMP concentration and PKA activity with FRET-based probes (Sample et al., 2012; see Combinatorial Applications).

The utility of PACs is demonstrated by studies up to the level of whole animals. PAC α has been expressed in cholinergic neurons (Weissenberger et al., 2011), motor neurons (Bucher and Buchner, 2009), and olfactory receptor neurons (ORNs; Bellmann et al., 2010) in *Drosophila*. This has enabled conceptual progress including the establishment of a specific class of ORNs that mediate olfactory avoidance behavior (Bellmann et al., 2010). PAC α has been applied to demonstrate a key role for cAMP in growth cone turning in *Xenopus* (Nicol et al., 2011). Nicol et al. (2011) found that local pulses of blue light on distal parts of growth cones expressing PAC α were sufficient to maintain orientation of axon outgrowth toward the midline despite blockade of a key Netrin-1 receptor. The potential utility of bPAC has been demonstrated in *Aplysia* (Nagahama et al., 2007), *Toxoplasma* (Hartmann et al., 2013), and in *Xenopus*, HEK293 cells and *Drosophila* (Schroder-Lang et al., 2007). Jansen et al. (2015) have shown how bPAC can be used to control sperm motility and maturation. Furthermore, specific expression of bPAC in *Drosophila* renal tubule in combination with pharmacological manipulations has revealed the distinct roles fulfilled by PKA and Epac in controlling secretion from principal and stellate cells (Efetova et al., 2013). The field is poised for further insights as application of PACs becomes more widespread.

Sequences for Subcellular Targeting and Modifying Protein–Protein Interactions

An important characteristic of genetically encoding sensors and manipulators of cAMP signaling is that they can be combined with targeting sequences to direct them to specific subcellular compartments. This approach facilitates investigation of spatial aspects of cAMP signaling. In addition, a number of sequences are available for manipulating interaction between PKA and its anchoring sites. A straightforward way to control the location of a given genetically encoded tool is to fuse it with a full-length signaling protein of interest. This option has been taken with proteins including AC8 (Willoughby et al., 2012, 2014; Everett and Cooper, 2013), full-length PKA RII (Zhang et al., 2001), different PDEs (Herget et al., 2008), SOD2 (Zhang et al., 2015), phospholamban (Sprenger et al., 2015), and Hsp20 (Sin et al., 2011). In cases where a good structural understanding is available, fusions are possible to shorter protein domains, such

as with the dimerization and docking (D/D) domain of PKA regulatory subunits for tethering at anchoring sites (Di Benedetto et al., 2008), or with the PDE4D-association region from mAKAP (Dodge-Kafka et al., 2005).

The structural interface between PKA and AKAPs is well understood: all AKAPs present a ~20 amino acid amphipathic helix that binds within a shallow hydrophobic groove on the D/D domain of PKA regulatory subunits (Gold et al., 2006; Kinderman et al., 2006; Sarma et al., 2010). Native and synthetic AKAP anchoring helix sequences are available for modifying PKA anchoring or targeting genetically encoded tools including cAMP sensors (summarized in **Table 1**). A popular sequence is Ht31 (Rosenmund et al., 1994), which is the native anchoring helix of AKAP-Lbc. Using a combination of structural information and peptide array screening, synthetic sequences have been developed with altered binding preferences for RI and RII PKA regulatory subunits. These include the RII-selective sequences AKAP-*is* (Alto et al., 2003), Super-AKAP-*is* (Gold et al., 2006), and AKB-II (Burns-Hamuro et al., 2003); and the RI-selective sequences RIAD (Carlson et al., 2006; Torheim et al., 2009) and AKB-RI (Burns-Hamuro et al., 2003). Studies that utilize sequences for modifying protein–protein interactions typically apply them exogenously as peptides, such as steared Ht31 (Gold et al., 2012), and delivery approaches in this vein are still improving (Wang et al., 2014, 2015). Some studies have taken advantage of their genetic encodability. For example, sequences including AKAP-*is* (Dodge-Kafka et al., 2005) and AKB-RI/RII (Burns-Hamuro et al., 2003) have been expressed using transfection, and Ht31 has been incorporated in a transgenic mouse (Park et al., 2014).

An additional recent innovation is the development of variants of PKA regulatory subunits with selective anchoring properties (Gold et al., 2013a). A structure-based bacteriophage screening procedure (Walker-Gray and Gold, 2015) enabled identification of variants of the RII D/D domain with substitutions that enable selective anchoring to AKAP18 and AKAP2 (Gold et al., 2013a). RSelect subunits can potentially be applied to drive PKA either specifically to or away from individual AKAPs (Gold et al., 2013a). In most tissues, with rare exceptions (Gold et al., 2012), multiple AKAPs are present and an important challenge is to identify the PKA substrates associated with different AKAP–PKA signaling complexes (Gold et al., 2013b). It is possible to genetically abrogate specific PKA anchoring sites, for example, in the case of AKAP150 Δ PKA knock-in mice in which the PKA anchoring helix in AKAP150 is absent (Murphy et al., 2014). Therefore, a potentially more novel application of RSelect subunits is to combine them with anchoring disruptors such as Ht31. This approach enables PKA catalytic subunits to be driven to a single AKAP within the cell (Gold et al., 2013a).

A variety of sequences may be utilized for targeting to organelles (**Table 1**). Inclusion of C-terminal polybasic-CAAX sequences enables targeting to the plasma membrane (DiPilato et al., 2004; Dyachok et al., 2006; Saucerman et al., 2006; Depry et al., 2011), whereas N-terminal addition of a sequence derived from Lyn kinase targets specifically to cholesterol-rich regions of plasma membrane (Terrin et al., 2006; Depry et al.,

TABLE 1 | Sequences for modifying interactions between cyclic AMP (cAMP) signaling proteins and subcellular targeting.

Purpose	Name and specifications	Reference
Sequences for modifying protein–protein interactions		
Binding to the D/D domain of PKA RII subunits	Ht31 (AADLIEEAASRIVDAVIEQVKA). $K_D = 2.2$ nM for RII α ; 1.3 μ M for RII β	Rosenmund et al. (1994), Alto et al. (2003)
	AKAP- <i>is</i> (QIEYLAKQIVDNAIQQA). $K_D = 0.4$ nM for RII α , 277 nM for RII β	Alto et al. (2003), Dodge-Kafka et al. (2005)
	Super-AKAP- <i>is</i> (QIEYVAKQIVDYAIHQQA). On filter assay binds RII α 4× more and RII β 12.5× less efficiently than AKAP- <i>is</i>	Gold et al. (2006)
Binding to the D/D domain of PKA RI subunits	AKB-RII (VQGNTDEAQEELLWAKMIVSDVMQQ). $K_D = 2.7$ nM for RII α , 2.5 μ M for RII β	Burns-Hamuro et al. (2003)
	RIAD (LEQYANQLADQIIKEATE). $K_D = 1$ nM for RII α , 1800 nM for RII β	Carlson et al. (2006), Torheim et al. (2009)
Localizing with type I PKA	AKB-RI (FEELAWKIAKMIWSDVDFQQ). $K_D = 5.2$ nM for RII α ; 450 nM for RII β	Burns-Hamuro et al. (2003)
Binding to AKAP anchoring helices	RII α (1–64)	Di Benedetto et al. (2008)
Specifically binding to the AKAP18 anchoring helix	RII β (amino acids 1–49)	Di Benedetto et al. (2008)
Binding to PDE4D	RSelectAKAP18 (PKA RII α 1–45 with I3V, I5L, T10D, Q14G substitutions)	Gold et al. (2013a)
	mAKAP (1286–1831)	Dodge-Kafka et al. (2005)
Sequences for subcellular targeting		
Plasma membrane	C-terminal addition of polybasic-CAAX sequence, e.g., GKKKKKSKTKCVIM. CAAX box undergoes farnesylation	DiPilato et al. (2004), Dyachok et al. (2006), Saucerman et al. (2006), Depry et al. (2011)
Plasma membrane (cholesterol-rich)	N-terminal addition of Lyn kinase sequence, e.g., MGCIKSKRKDNLNDD, that undergoes myristoylation and palmitoylation	Terrin et al. (2006), Depry et al. (2011), Sample et al. (2012)
Nuclear localization	C-terminal addition of nuclear localization signal PKKKRKVEDA	DiPilato et al. (2004), Terrin et al. (2006), Sample et al. (2012)
Nuclear export	C-terminal addition of nuclear export sequence LPPLERLTL	Sample et al. (2012)
Sarcoplasmic reticulum	C-terminal addition of the helical transmembrane region (PQQARQKLQNLFINFCLILICLLIIVMMLL) of phospholamban	Liu et al. (2011)
Outer mitochondrial membrane	N-terminal addition of the targeting peptide γ Tom70	Lefkimmiatis et al. (2013)
Mitochondrial matrix	N-terminal addition of MitoDAKAP1 (MAIQLRSLFPLALPGMLALLGWWWWFFSRKK), a mitochondrial signal sequence derived from D-AKAP1	Burns-Hamuro et al. (2003), DiPilato et al. (2004), Lim et al. (2007), Depry et al. (2011)
	N-terminal addition of the mitochondrial matrix targeting signal encoded in the first 12 amino acids of subunit IV of human cytochrome oxidase c	DiPilato et al. (2004), Lefkimmiatis et al. (2013)

2011; Sample et al., 2012). C-terminal addition of the sequence ‘PKKKRKVEDA’ enables nuclear localization (DiPilato et al., 2004; Terrin et al., 2006; Sample et al., 2012), whereas addition of ‘LPPLERLTL’ at the same terminus drives nuclear export (Sample et al., 2012). Targeting to the sarcoplasmic reticulum is possible by fusing with the helical transmembrane domain of phospholamban (Liu et al., 2011). Furthermore, sequences are available for targeting to both the outer mitochondrial membrane (OMM; Burns-Hamuro et al., 2003; DiPilato et al., 2004; Lim et al., 2007; Depry et al., 2011; Lefkimmiatis et al., 2013), and to the mitochondrial matrix (DiPilato et al., 2004; Lefkimmiatis et al., 2013). At the whole animal level, systems are also available for driving cell-type specific expression of genetically encoded tools. These include the UAS/GAL4 system in *Drosophila* (Shafer et al., 2008), and the reverse tetracycline transactivator (rtTA)/doxycycline system in transgenic mice (Kim et al., 2008). Overall, there is an impressive arsenal of sequences at the experimenter’s disposal for manipulating the location and binding properties of cAMP signaling proteins and genetically encoded tools.

Combinatorial Applications

The tools described in this review have been combined in different ways to make conceptual breakthroughs that would not have been possible if the tools were applied in isolation. The majority of combinations consist of fusions to either sequences derived from cAMP signaling proteins or to subcellular targeting sequences. We will also consider two exceptional studies that have utilized highly innovative combinations of the tool set (Ni et al., 2011; Sample et al., 2012).

The first study involving AKAR1 set a precedent for combining a cAMP sensor with sequences derived from cAMP signaling proteins. Fusion of AKAR1 to the PKA RII subunit revealed that PKA phosphorylation occurs more quickly if PKA is tethered in proximity to its substrate (Zhang et al., 2001). This finding underlined the importance of anchoring PKA to its substrates. A similar approach has been to fuse an Epac-based cAMP sensor to AC8 (Willoughby et al., 2012, 2014), for example, to demonstrate that this Ca²⁺-sensitive AC responds to Ca²⁺ entering through L-type Ca²⁺ channels (Everett and

Cooper, 2013). Fusions to isolated domains of cAMP signaling proteins have also been insightful. Fusing Epac-based sensors to the D/D domains of different PKA regulatory subunit classes (Di Benedetto et al., 2008; Roder et al., 2009) has helped to establish that PDE4 associates with RII subunits, whereas PDE2 acts in the vicinity of RI subunits (Di Benedetto et al., 2008). By applying this approach in cardiomyocytes, Di Benedetto et al. (2008) also revealed that the β -AR agonist isoproterenol triggers relatively higher cAMP accumulation with RII subunits, whereas hormones including glucagon induce raised cAMP in the vicinity of the RI subunit. This mechanism allows G protein-coupled receptor specific patterns of cAMP signaling to occur within the same cell. A fusion of the PDE-binding region of mAKAP (residues 1286–1831) with the AKAR2 reporter has also been applied to demonstrate that dominant active MEK5 prolongs PKA activity after cAMP elevation with forskolin (Dodge-Kafka et al., 2005).

Targeting FRET-based sensors using subcellular targeting sequences has also proved to be valuable. Fusions of AKAR reporters with membrane-targeting sequences (Saucerman et al., 2006; Depry et al., 2011) have revealed, for example, that basal PKA activity is higher in cholesterol-rich 'raft' regions of membrane (Depry et al., 2011). Similarly, plasma membrane-targeting of an Epac-based cAMP sensor has helped to establish how a pre-assembled protein complex including RXFP1, AKAP79, AC2, β -arrestin 2, and PDE4D3 enables responses to sub-picomolar circulating concentrations of relaxin peptide (Halls and Cooper, 2010). Comparison of PKA activity using AKAR4 targeted to either the mitochondrial matrix or OMM shows that PKA phosphorylation is more enduring at the OMM than in the cytosol due to diminished phosphatase activity at the OMM (Lefkimmiatis et al., 2013). A related approach has been to fuse a sequence that targets to the outer mitochondrial membrane to the PKA regulatory subunit-specific anchoring disruptors AKB-R1 and AKB-R2 (Lim et al., 2007). Lim et al. (2007) expressed these fused sequences to prevent access of either type I or type II PKA to the plasma membrane. This approach revealed that leading-edge phosphorylation of PKA substrates requires type I PKA, with re-localization of type I PKA to the mitochondria inhibiting both the directional persistence and speed of cell migration (Lim et al., 2007).

Two highly innovative combinatorial approaches have been exploited to examine cAMP dynamics in recent years (Terrin et al., 2006; Sample et al., 2012). Sample et al. (2012) developed a novel technique called spatiotemporal manipulation of cAMP using sAC_t (Sample et al., 2012). They targeted sAC_t by fusing the bicarbonate-activated AC to sequences that target to either the plasma membrane, cytosol, or the nucleus (Sample et al., 2012). By monitoring cAMP accumulation or PKA activity with cytosolic or membrane-tethered sensors, the authors revealed that cAMP and PKA activity can be localized at either the plasma membrane or in the nucleus. Modeling the responses of cAMP and PKA to forskolin and nuclear sAC indicated that a pool of PKA resides in the nucleus. This prediction was subsequently confirmed by immunohistochemistry and immunoblotting (Sample et al., 2012). Another elegant innovation has been to red-shift FRET-based sensors of cAMP and PKA activity to enable

simultaneous application with other fluorescent sensors. Red-shifted sensors typically include red fluorescent protein (RFP) variants such that FRET emission occurs at longer wavelengths than with typical fluorescent probes (Ni et al., 2011). This approach was taken to study a cAMP-Ca²⁺-PKA oscillatory circuit in MIN6 cells (Ni et al., 2011). Ni et al. (2011) performed imaging of Fura-2 with either red-shifted AKAR or a red-shifted Epac-based cAMP sensor. Remarkably, the authors also utilized a novel dual detector that enables simultaneous PKA activity and cAMP detection (ICUEPID). Application of these tools showed that oscillations in MIN6 cells can be triggered by cAMP alone, and the authors speculate that such oscillations may provide a way for local PKA activity to be maintained for long periods of time (Ni et al., 2011). These two studies from the Zhang laboratory exemplify the potential benefits of combining different categories of tools in novel ways.

Considerations for Experimental Design

When deciding whether to employ one of the tools outlined in this review, one considers how the strengths, limitations, and challenges associated with the tool match up with the aims of an experiment. If spatial aspects of cAMP signaling are the emphasis of investigation, then the Epac-based cAMP probes (Klarenbeek et al., 2011; Li et al., 2015) are a good option as they consist of relatively short sequences that can be directed to subcellular locations with targeting sequences (Table 1). On the other hand, if a maxim is placed on temporal resolution, the CNG2 system may be the better option (Rich et al., 2000; Fagan et al., 2001). Similarly, PACs such as bPAC (Ryu et al., 2010; Stierl et al., 2011) allow faster activation and de-activation than the bicarbonate-activated sAC_t (Sample et al., 2012). For tandem applications, the bicarbonate-activated sAC_t cyclase has the advantage that there is no concern about unwanted photoactivation when combined with FRET-based cAMP/PKA sensors (Sample et al., 2012). Similarly, red-shifted sensors can allow cAMP and PKA activity sensors to be applied simultaneously (Ni et al., 2011). The choice of tools will also be dictated by the availability of specialist equipment. For example, application of FRET-based sensors typically relies on a confocal microscope with appropriate lasers. If such a microscope is unavailable then recordings may be performed using a plate reader (Robinson et al., 2014) although studies will be limited to the population level following this approach.

It is important to consider the potential off-target effects and distortions that may be caused by the tools. For example, if PKA is the focus of investigation, it is wise to avoid PKA-based cAMP sensors that may distort signaling by interacting with native PKA subunits. Any unwanted cellular changes resulting from long-term expression of genetically encoded tools can be limited by using inducible expression systems such as the tetracycline system (Meyer-Ficca et al., 2004). Another consideration is that cAMP sensors act as buffers for cAMP, potentially altering the amplitude and duration of cAMP transients in a similar way to alteration of free Ca²⁺ transients by dyes such as Fura-2 (Neher, 2008). Buffering effects can be at least ameliorated by taking care

to express cAMP sensors at levels no higher than is necessary for reliable detection. Finally, one should also bear in mind that targeting and disruptor sequences may not always behave as desired. The specificity of disruptor sequences can be tested by performing negative control experiments with sequences such as Ht31-P in which the disruptor helix is destabilized by incorporation of a central proline (Willoughby et al., 2006). It is also good practice to image cells to check that localization sequences have partitioned within the cell as anticipated (Lim et al., 2007). Overall, the wide range of available tools means that a good technical solution is at hand for most experimental aims.

Conclusions and Prospects

The genetically encoded tool set for investigating cAMP signaling has expanded rapidly over the last 15 years. There are now a multitude of options for monitoring intracellular fluctuations in cAMP, with Epac-based probes emerging as the most popular sensor class (DiPilato and Zhang, 2009; Klarenbeek et al., 2011). AKAR reporters enable PKA activity to be monitored more directly, while experimenters can artificially elevate cAMP levels by photoactivating PACs or stimulating sAC with bicarbonate. The functionality of these tools can be enhanced by combining with an impressive array of sequences for modifying protein-protein interactions and subcellular targeting (Table 1).

There is scope for improving the tools described in this review, developing novel tools, and combining the tools in new ways. Biosensors typically improve over time by incorporating modifications based on user feedback (Oldach and Zhang, 2014). This process may have reached the point of diminishing returns for FRET-based sensors and peptides derived from AKAP anchoring helices, whereas there is more potential for improvement of the more recently developed PACs and RSelect subunits. For example, an AC with a synthetic domain architecture has been shown to be activated by near-infrared light (Ryu et al., 2014). This PAC is likely to be particularly advantageous for studies that require deep tissue penetration (Ryu et al., 2014). It is worth noting that methods for calibrating FRET-based cAMP reporters are still improving (Koschinski and Zaccolo, 2015). Genetically encoded sensors that incorporate Renilla luciferase for Bioluminescence resonance energy transfer (BRET) imaging (Prinz et al., 2006; Jiang et al., 2007) exhibit higher maximal signal-to-noise ratios than FRET-based sensors. Application of BRET sensors in live cell imaging could become more popular if light detectors can improve to overcome the relatively low light output of BRET compared to FRET. Although sequences for disrupting or selectively binding to either side of the AKAP-PKA interface are advanced (Table 1), no equivalent

sequences exist for interactions mediated by ACs, PDEs, or Epacs. If the structural and molecular basis of interactions involving these protein classes can be determined more precisely, it should be relatively straightforward to develop improved sequences using established peptide array screening (Alto et al., 2003; Burns-Hamuro et al., 2003) and directed evolution (Walker-Gray and Gold, 2015) approaches.

There are currently no existing technologies for activating PKA or Epac activity with temporal precision. One future avenue is to genetically encode unnatural amino acids such as caged lysine using the amber codon TAG (Gautier et al., 2011; Kim et al., 2013) as a basis for enzyme activation upon illumination in a similar way to PACs. Future studies may also exploit an approach for light-gating protein-protein interactions that can be genetically encoded using sequences from a phytochrome signaling network (Levskaya et al., 2009). Further combinatorial possibilities that have been underexploited include fusions of PACs and sAC_t with the sequences listed in Table 1. Many targeting studies have focused on the relation of cAMP signaling with different sub-structural features of cardiomyocytes (Di Benedetto et al., 2008; Nikolaev et al., 2010). It will be valuable to perform analogous experiments to probe cAMP signaling in different neuronal compartments. Finally, the ICUEPID sensor (Ni et al., 2011) sets a precedent for how red-shifting FRET-based sensors can enable their combination with other technologies that rely upon illumination.

It is important to question the value of determining how cAMP signaling processes proceed with high spatial and temporal detail. The conceptual breakthrough that supported the development of the first β -blocker propranolol (Stapleton and Black, 1997) indicates how current research targeted at spatiotemporal cAMP signaling might be useful in the long term. James Black was inspired to target β -ARs by experiments conducted by Raymond Ahlquist. Ahlquist established that there are two major classes of adrenergic receptor, with β -ARs underpinning responses to norepinephrine in the heart (Stapleton and Black, 1997). An analogous classification of cAMP signaling processes at the sub-cellular level can provide a framework for selectively intervening in cAMP signaling with more precision than drugs that act at the level of the receptor. Combinatorial application of the genetically encoded tools described in this review is central to achieving the level of spatiotemporal detail necessary to open a path to a next generation of drugs that manipulate cAMP signaling.

Acknowledgment

MG is a Wellcome Trust and Royal Society Sir Henry Dale fellow.

References

- Adams, S. R., Harootunian, A. T., Buechler, Y. J., Taylor, S. S., and Tsien, R. Y. (1991). Fluorescence ratio imaging of cyclic AMP in single cells. *Nature* 349, 694–697. doi: 10.1038/349694a0
- Alto, N. M., Soderling, S. H., Hoshi, N., Langeberg, L. K., Fayos, R., Jennings, P. A., et al. (2003). Bioinformatic design of A-kinase anchoring protein-in silico: a potent and selective peptide antagonist of type II protein kinase A anchoring. *Proc. Natl. Acad. Sci. U.S.A.* 100, 4445–4450. doi: 10.1073/pnas.0330734100
- Ayling, L. J., Briddon, S. J., Halls, M. L., Hammond, G. R., Vaca, L., Pacheco, J., et al. (2012). Adenylyl cyclase AC8 directly controls its micro-environment by recruiting the actin cytoskeleton in a cholesterol-rich milieu. *J. Cell Sci.* 125, 869–886. doi: 10.1242/jcs.091090

- Bacskaï, B. J., Hochner, B., Mahaut-Smith, M., Adams, S. R., Kaang, B. K., Kandel, E. R., et al. (1993). Spatially resolved dynamics of cAMP and protein kinase A subunits in *Aplysia* sensory neurons. *Science* 260, 222–226. doi: 10.1126/science.7682336
- Bellmann, D., Richardt, A., Freyberger, R., Nuwal, N., Schwarzel, M., Fiala, A., et al. (2010). Optogenetically induced olfactory stimulation in *Drosophila* larvae reveals the neuronal basis of odor-aversion behavior. *Front. Behav. Neurosci.* 4:27. doi: 10.3389/fnbeh.2010.00027
- Beuschlein, F., Fassnacht, M., Assie, G., Calebiro, D., Stratakis, C. A., Osswald, A., et al. (2014). Constitutive activation of PKA catalytic subunit in adrenal Cushing's syndrome. *N. Engl. J. Med.* 370, 1019–1028. doi: 10.1056/NEJMoa1310359
- Brooker, G. (1973). Oscillation of cyclic adenosine monophosphate concentration during the myocardial contraction cycle. *Science* 182, 933–934. doi: 10.1126/science.182.4115.933
- Bucher, D., and Buchner, E. (2009). Stimulating PACalpha increases miniature excitatory junction potential frequency at the *Drosophila* neuromuscular junction. *J. Neurogenet.* 23, 220–224. doi: 10.1080/01677060802441356
- Burns-Hamuro, L. L., Ma, Y., Kammerer, S., Reineke, U., Self, C., Cook, C., et al. (2003). Designing isoform-specific peptide disruptors of protein kinase A localization. *Proc. Natl. Acad. Sci. U.S.A.* 100, 4072–4077. doi: 10.1073/pnas.2628038100
- Carlson, C. R., Lygren, B., Berge, T., Hoshi, N., Wong, W., Tasken, K., et al. (2006). Delineation of type I protein kinase A-selective signaling events using an RI anchoring disruptor. *J. Biol. Chem.* 281, 21535–21545. doi: 10.1074/jbc.M603223200
- Cooper, D. M., and Tabbasum, V. G. (2014). Adenylate cyclase-centred microdomains. *Biochem. J.* 462, 199–213. doi: 10.1042/BJ20140560
- Depry, C., Allen, M. D., and Zhang, J. (2011). Visualization of PKA activity in plasma membrane microdomains. *Mol. Biosyst.* 7, 52–58. doi: 10.1039/C0MB00079E
- de Rooij, J., Zwartkruis, F. J., Verheijen, M. H., Cool, R. H., Nijman, S. M., Wittinghofer, A., et al. (1998). Epac is a Rap1 guanine-nucleotide-exchange factor directly activated by cyclic AMP. *Nature* 396, 474–477. doi: 10.1038/24884
- Di Benedetto, G., Zoccarato, A., Lissandron, V., Terrin, A., Li, X., Houslay, M. D., et al. (2008). Protein kinase A type I and type II define distinct intracellular signaling compartments. *Circ. Res.* 103, 836–844. doi: 10.1161/CIRCRESAHA.108.174813
- DiPilato, L. M., Cheng, X., and Zhang, J. (2004). Fluorescent indicators of cAMP and Epac activation reveal differential dynamics of cAMP signaling within discrete subcellular compartments. *Proc. Natl. Acad. Sci. U.S.A.* 101, 16513–16518. doi: 10.1073/pnas.0405973101
- DiPilato, L. M., and Zhang, J. (2009). The role of membrane microdomains in shaping beta2-adrenergic receptor-mediated cAMP dynamics. *Mol. Biosyst.* 5, 832–837. doi: 10.1039/b823243a
- Dodge-Kafka, K. L., Soughayer, J., Pare, G. C., Carlisle Michel, J. J., Langeberg, L. K., Kapiloff, M. S., et al. (2005). The protein kinase A anchoring protein mAKAP coordinates two integrated cAMP effector pathways. *Nature* 437, 574–578. doi: 10.1038/nature03966
- Dunn, T. A., Wang, C. T., Colicos, M. A., Zaccolo, M., Dipilato, L. M., Zhang, J., et al. (2006). Imaging of cAMP levels and protein kinase A activity reveals that retinal waves drive oscillations in second-messenger cascades. *J. Neurosci.* 26, 12807–12815. doi: 10.1523/JNEUROSCI.3238-06.2006
- Duvall, L. B., and Taghert, P. H. (2012). The circadian neuropeptide PDF signals preferentially through a specific adenylate cyclase isoform AC3 in *M* pacemakers of *Drosophila*. *PLoS Biol.* 10:e1001337. doi: 10.1371/journal.pbio.1001337
- Dyachok, O., Idevall-Hagren, O., Sagetorp, J., Tian, G., Wuttke, A., Arriumerlou, C., et al. (2008). Glucose-induced cyclic AMP oscillations regulate pulsatile insulin secretion. *Cell Metab.* 8, 26–37. doi: 10.1016/j.cmet.2008.06.003
- Dyachok, O., Isakov, Y., Sagetorp, J., and Tengholm, A. (2006). Oscillations of cyclic AMP in hormone-stimulated insulin-secreting beta-cells. *Nature* 439, 349–352. doi: 10.1038/nature04410
- Edwards, H. V., Christian, F., and Baillie, G. S. (2012). cAMP: novel concepts in compartmentalised signalling. *Semin. Cell Dev. Biol.* 23, 181–190. doi: 10.1016/j.semcdb.2011.09.005
- Efetova, M., Petereit, L., Rosiewicz, K., Overend, G., Haussig, F., Hovemann, B. T., et al. (2013). Separate roles of PKA and EPAC in renal function unraveled by the optogenetic control of cAMP levels in vivo. *J. Cell Sci.* 126, 778–788. doi: 10.1242/jcs.114140
- Everett, K. L., and Cooper, D. M. (2013). An improved targeted cAMP sensor to study the regulation of adenylyl cyclase 8 by Ca²⁺ entry through voltage-gated channels. *PLoS ONE* 8:e75942. doi: 10.1371/journal.pone.0075942
- Fagan, K. A., Schaack, J., Zweifach, A., and Cooper, D. M. (2001). Adenovirus encoded cyclic nucleotide-gated channels: a new methodology for monitoring cAMP in living cells. *FEBS Lett.* 500, 85–90. doi: 10.1016/S0014-5793(01)02564-9
- Gautier, A., Deiters, A., and Chin, J. W. (2011). Light-activated kinases enable temporal dissection of signaling networks in living cells. *J. Am. Chem. Soc.* 133, 2124–2127. doi: 10.1021/ja1109979
- Gervasi, N., Tchenio, P., and Preat, T. (2010). PKA dynamics in a *Drosophila* learning center: coincidence detection by rutabaga adenylyl cyclase and spatial regulation by dunce phosphodiesterase. *Neuron* 65, 516–529. doi: 10.1016/j.neuron.2010.01.014
- Gold, M. G., Fowler, D. M., Means, C. K., Pawson, C. T., Stephany, J. J., Langeberg, L. K., et al. (2013a). Engineering A-kinase anchoring protein (AKAP)-selective regulatory subunits of protein kinase A (PKA) through structure-based phage selection. *J. Biol. Chem.* 288, 17111–17121. doi: 10.1074/jbc.M112.447326
- Gold, M. G., Gonen, T., and Scott, J. D. (2013b). Local cAMP signaling in disease at a glance. *J. Cell Sci.* 126, 4537–4543. doi: 10.1242/jcs.133751
- Gold, M. G., Lygren, B., Dokurno, P., Hoshi, N., Mcconnachie, G., Tasken, K., et al. (2006). Molecular basis of AKAP specificity for PKA regulatory subunits. *Mol. Cell.* 24, 383–395. doi: 10.1016/j.molcel.2006.09.006
- Gold, M. G., Reichow, S. L., O'Neill, S. E., Weisbrod, C. R., Langeberg, L. K., Bruce, J. E., et al. (2012). AKAP2 anchors PKA with aquaporin-0 to support ocular lens transparency. *EMBO Mol. Med.* 4, 15–26. doi: 10.1002/emmm.201100184
- Gorbulonova, Y. V., and Spitzer, N. C. (2002). Dynamic interactions of cyclic AMP transients and spontaneous Ca²⁺ spikes. *Nature* 418, 93–96. doi: 10.1038/nature00835
- Halls, M. L., and Cooper, D. M. (2010). Sub-picomolar relaxin signalling by a pre-assembled RXFP1, AKAP79, AC2, beta-arrestin 2, PDE4D3 complex. *EMBO J.* 29, 2772–2787. doi: 10.1038/emboj.2010.168
- Hansen, C., Howlin, J., Tengholm, A., Dyachok, O., Vogel, W. F., Nairn, A. C., et al. (2009). Wnt-5a-induced phosphorylation of DARPP-32 inhibits breast cancer cell migration in a CREB-dependent manner. *J. Biol. Chem.* 284, 27533–27543. doi: 10.1074/jbc.M109.048884
- Hartmann, A., Arroyo-Olarte, R. D., Imkeller, K., Hegemann, P., Lucius, R., and Gupta, N. (2013). Optogenetic modulation of an adenylate cyclase in *Toxoplasma gondii* demonstrates a requirement of the parasite cAMP for host-cell invasion and stage differentiation. *J. Biol. Chem.* 288, 13705–13717. doi: 10.1074/jbc.M113.465583
- Hayes, J. S., Brunton, L. L., and Mayer, S. E. (1980). Selective activation of particulate cAMP-dependent protein kinase by isoproterenol and prostaglandin E1. *J. Biol. Chem.* 255, 5113–5119.
- Hempel, C. M., Vincent, P., Adams, S. R., Tsien, R. Y., and Selverston, A. I. (1996). Spatio-temporal dynamics of cyclic AMP signals in an intact neural circuit. *Nature* 384, 166–169. doi: 10.1038/384166a0
- Herget, S., Lohe, M. J., and Nikolaev, V. O. (2008). Real-time monitoring of phosphodiesterase inhibition in intact cells. *Cell. Signal.* 20, 1423–1431. doi: 10.1016/j.cellsig.2008.03.011
- Iseki, M., Matsunaga, S., Murakami, A., Ohno, K., Shiga, K., Yoshida, K., et al. (2002). A blue-light-activated adenylyl cyclase mediates photoavoidance in *Euglena gracilis*. *Nature* 415, 1047–1051. doi: 10.1038/4151047a
- Jansen, V., Alvarez, L., Balbach, M., Strunker, T., Hegemann, P., Kaupp, U. B., et al. (2015). Controlling fertilization and cAMP signaling in sperm by optogenetics. *Elife* 4:e05161. doi: 10.7554/eLife.05161
- Jiang, L. I., Collins, J., Davis, R., Lin, K. M., Decamp, D., Roach, T., et al. (2007). Use of a cAMP BRET sensor to characterize a novel regulation of cAMP by the sphingosine 1-phosphate/G13 pathway. *J. Biol. Chem.* 282, 10576–10584. doi: 10.1074/jbc.M609695200
- Kamioka, Y., Sumiyama, K., Mizuno, R., Sakai, Y., Hirata, E., Kiyokawa, E., et al. (2012). Live imaging of protein kinase activities in transgenic mice expressing FRET biosensors. *Cell Struct. Funct.* 37, 65–73. doi: 10.1247/csf.11045

- Kawasaki, H., Springett, G. M., Mochizuki, N., Toki, S., Nakaya, M., Matsuda, M., et al. (1998). A family of cAMP-binding proteins that directly activate Rap1. *Science* 282, 2275–2279. doi: 10.1126/science.282.5397.2275
- Keely, S. L. (1979). Prostaglandin E1 activation of heart cAMP-dependent protein kinase: apparent dissociation of protein kinase activation from increases in phosphorylase activity and contractile force. *Mol. Pharmacol.* 15, 235–245.
- Kim, C. H., Axup, J. Y., and Schultz, P. G. (2013). Protein conjugation with genetically encoded unnatural amino acids. *Curr. Opin. Chem. Biol.* 17, 412–419. doi: 10.1016/j.cbpa.2013.04.017
- Kim, J. W., Roberts, C. D., Berg, S. A., Caicedo, A., Roper, S. D., and Chaudhari, N. (2008). Imaging cyclic AMP changes in pancreatic islets of transgenic reporter mice. *PLoS ONE* 3:e2127. doi: 10.1371/journal.pone.0002127
- Kinderman, F. S., Kim, C., Von Daake, S., Ma, Y., Pham, B. Q., Spraggon, G., et al. (2006). A dynamic mechanism for AKAP binding to RII isoforms of cAMP-dependent protein kinase. *Mol. Cell.* 24, 397–408. doi: 10.1016/j.molcel.2006.09.015
- Klarenbeek, J. B., Goedhart, J., Hink, M. A., Gadella, T. W., and Jalink, K. (2011). A mTurquoise-based cAMP sensor for both FLIM and ratiometric read-out has improved dynamic range. *PLoS ONE* 6:e19170. doi: 10.1371/journal.pone.0019170
- Koschinski, A., and Zaccolo, M. (2015). A novel approach combining real-time imaging and the patch-clamp technique to calibrate FRET-based reporters for cAMP in their cellular microenvironment. *Methods Mol. Biol.* 1294, 25–40. doi: 10.1007/978-1-4939-2537-7_3
- Landa, L. R. Jr., Harbeck, M., Kaihara, K., Chepurny, O., Kitiphongspattana, K., Graf, O., et al. (2005). Interplay of Ca²⁺ and cAMP signaling in the insulin-secreting MIN6 beta-cell line. *J. Biol. Chem.* 280, 31294–31302. doi: 10.1074/jbc.M505657200
- Lefkimmiatis, K., Lerondi, D., and Hofer, A. M. (2013). The inner and outer compartments of mitochondria are sites of distinct cAMP/PKA signaling dynamics. *J. Cell Biol.* 202, 453–462. doi: 10.1083/jcb.201303159
- Levsikaya, A., Weiner, O. D., Lim, W. A., and Voigt, C. A. (2009). Spatiotemporal control of cell signalling using a light-switchable protein interaction. *Nature* 461, 997–1001. doi: 10.1038/nature08446
- Li, L., Gervasi, N., and Girault, J. A. (2015). Dendritic geometry shapes neuronal cAMP signalling to the nucleus. *Nat. Commun.* 6, 6319. doi: 10.1038/ncomms7319
- Lim, C. J., Han, J., Yousefi, N., Ma, Y., Amieux, P. S., Mcknight, G. S., et al. (2007). Alpha4 integrins are type I cAMP-dependent protein kinase-anchoring proteins. *Nat. Cell Biol.* 9, 415–421. doi: 10.1038/ncb1561
- Lissandron, V., Rossetto, M. G., Erbguth, K., Fiala, A., Daga, A., and Zaccolo, M. (2007). Transgenic fruit-flies expressing a FRET-based sensor for in vivo imaging of cAMP dynamics. *Cell Signal.* 19, 2296–2303. doi: 10.1016/j.cellsig.2007.07.004
- Liu, S., Zhang, J., and Xiang, Y. K. (2011). FRET-based direct detection of dynamic protein kinase A activity on the sarcoplasmic reticulum in cardiomyocytes. *Biochem. Biophys. Res. Commun.* 404, 581–586. doi: 10.1016/j.bbrc.2010.11.116
- Mehta, S., and Zhang, J. (2011). Reporting from the field: genetically encoded fluorescent reporters uncover signaling dynamics in living biological systems. *Annu. Rev. Biochem.* 80, 375–401. doi: 10.1146/annurev-biochem-060409-093259
- Meyer-Ficca, M. L., Meyer, R. G., Kaiser, H., Brack, A. R., Kandolf, R., and Kupper, J.-H. (2004). Comparative analysis of inducible expression systems in transient transfection studies. *Anal. Biochem.* 334, 9–19. doi: 10.1016/j.ab.2004.07.011
- Mongillo, M., Mcorley, T., Evellin, S., Sood, A., Lissandron, V., Terrin, A., et al. (2004). Fluorescence resonance energy transfer-based analysis of cAMP dynamics in live neonatal rat cardiac myocytes reveals distinct functions of compartmentalized phosphodiesterases. *Circ. Res.* 95, 67–75. doi: 10.1161/01.RES.0000134629.84732.11
- Murphy, J. G., Sanderson, J. L., Gorski, J. A., Scott, J. D., Catterall, W. A., Sather, W. A., et al. (2014). AKAP-anchored PKA maintains neuronal L-type calcium channel activity and NFAT transcriptional signaling. *Cell Rep.* 7, 1577–1588. doi: 10.1016/j.celrep.2014.04.027
- Nagahama, T., Suzuki, T., Yoshikawa, S., and Iseki, M. (2007). Functional transplant of photoactivated adenylyl cyclase (PAC) into *Aplysia* sensory neurons. *Neurosci. Res.* 59, 81–88. doi: 10.1016/j.neures.2007.05.015
- Nagel, G., Szellas, T., Huhn, W., Kateriya, S., Adeishvili, N., Berthold, P., et al. (2003). Channelrhodopsin-2, a directly light-gated cation-selective membrane channel. *Proc. Natl. Acad. Sci. U.S.A.* 100, 13940–13945. doi: 10.1073/pnas.1936192100
- Neher, E. (2008). Details of Ca²⁺ dynamics matter. *J. Physiol.* 586, 2031. doi: 10.1113/jphysiol.2008.153080
- Ni, Q., Ganesan, A., Aye-Han, N. N., Gao, X., Allen, M. D., Levchenko, A., et al. (2011). Signaling diversity of PKA achieved via a Ca²⁺-cAMP-PKA oscillatory circuit. *Nat. Chem. Biol.* 7, 34–40. doi: 10.1038/nchembio.478
- Nicol, X., Hong, K. P., and Spitzer, N. C. (2011). Spatial and temporal second messenger codes for growth cone turning. *Proc. Natl. Acad. Sci. U.S.A.* 108, 13776–13781. doi: 10.1073/pnas.1100247108
- Nikolaev, V. O., Bunemann, M., Hein, L., Hannawacker, A., and Lohse, M. J. (2004). Novel single chain cAMP sensors for receptor-induced signal propagation. *J. Biol. Chem.* 279, 37215–37218. doi: 10.1074/jbc.C400302200
- Nikolaev, V. O., Bunemann, M., Schmitteckert, E., Lohse, M. J., and Engelhardt, S. (2006). Cyclic AMP imaging in adult cardiac myocytes reveals far-reaching beta1-adrenergic but locally confined beta2-adrenergic receptor-mediated signaling. *Circ. Res.* 99, 1084–1091. doi: 10.1161/01.RES.0000250046.69918.d5
- Nikolaev, V. O., Moshkov, A., Lyon, A. R., Miragoli, M., Novak, P., Paur, H., et al. (2010). Beta2-adrenergic receptor redistribution in heart failure changes cAMP compartmentation. *Science* 327, 1653–1657. doi: 10.1126/science.1185988
- Oldach, L., and Zhang, J. (2014). Genetically encoded fluorescent biosensors for live-cell visualization of protein phosphorylation. *Chem. Biol.* 21, 186–197. doi: 10.1016/j.chembiol.2013.12.012
- Park, A. J., Havekes, R., Choi, J. H., Luczak, V., Nie, T., Huang, T., et al. (2014). A presynaptic role for PKA in synaptic tagging and memory. *Neurobiol. Learn. Mem.* 114, 101–112. doi: 10.1016/j.nlm.2014.05.005
- Pirez, N., Christmann, B. L., and Griffith, L. C. (2013). Daily rhythms in locomotor circuits in *Drosophila* involve PDF. *J. Neurophysiol.* 110, 700–708. doi: 10.1152/jn.00126.2013
- Ponsioen, B., Zhao, J., Riedl, J., Zwartkruis, F., Van Der Krogt, G., Zaccolo, M., et al. (2004). Detecting cAMP-induced Epac activation by fluorescence resonance energy transfer: epac as a novel cAMP indicator. *EMBO Rep.* 5, 1176–1180. doi: 10.1038/sj.embor.7400290
- Prinz, A., Diskar, M., Erlbruch, A., and Herberg, F. W. (2006). Novel, isotype-specific sensors for protein kinase A subunit interaction based on bioluminescence resonance energy transfer (BRET). *Cell. Signal.* 18, 1616–1625. doi: 10.1016/j.cellsig.2006.01.013
- Raffelberg, S., Wang, L., Gao, S., Losi, A., Gartner, W., and Nagel, G. (2013). A LOV-domain-mediated blue-light-activated adenylyl (adenylyl) cyclase from the cyanobacterium *Microcoleus chthonoplastes* PCC 7420. *Biochem. J.* 455, 359–365. doi: 10.1042/BJ20130637
- Rich, T. C., Fagan, K. A., Nakata, H., Schaack, J., Cooper, D. M., and Karpen, J. W. (2000). Cyclic nucleotide-gated channels colocalize with adenylyl cyclase in regions of restricted cAMP diffusion. *J. Gen. Physiol.* 116, 147–161. doi: 10.1085/jgp.116.2.147
- Rich, T. C., Tse, T. E., Rohan, J. G., Schaack, J., and Karpen, J. W. (2001). In vivo assessment of local phosphodiesterase activity using tailored cyclic nucleotide-gated channels as cAMP sensors. *J. Gen. Physiol.* 118, 63–78. doi: 10.1085/jgp.118.1.63
- Rich, T. C., Xin, W., Mehats, C., Hassell, K. A., Piggott, L. A., Le, X., et al. (2007). Cellular mechanisms underlying prostaglandin-induced transient cAMP signals near the plasma membrane of HEK-293 cells. *Am. J. Physiol. Cell Physiol.* 292, C319–C331. doi: 10.1152/ajpcell.00121.2006
- Robinson, K. H., Yang, J. R., and Zhang, J. (2014). FRET and BRET-based biosensors in live cell compound screens. *Methods Mol. Biol.* 1071, 217–225. doi: 10.1007/978-1-62703-622-1_17
- Rochais, F., Vandecasteele, G., Lefebvre, F., Lugnier, C., Lum, H., Mazet, J. L., et al. (2004). Negative feedback exerted by cAMP-dependent protein kinase and cAMP phosphodiesterase on subsarcolemmal cAMP signals in intact cardiac myocytes: an in vivo study using adenovirus-mediated expression of CNG channels. *J. Biol. Chem.* 279, 52095–52105. doi: 10.1074/jbc.M405697200
- Roder, I. V., Lissandron, V., Martin, J., Petersen, Y., Di Benedetto, G., Zaccolo, M., et al. (2009). PKA microdomain organisation and cAMP handling in healthy and dystrophic muscle in vivo. *Cell. Signal.* 21, 819–826. doi: 10.1016/j.cellsig.2009.01.029
- Rosenmund, C., Carr, D. W., Bergeson, S. E., Nilaver, G., Scott, J. D., and Westbrook, G. L. (1994). Anchoring of protein kinase A is required for

- modulation of AMPA/kainate receptors on hippocampal neurons. *Nature* 368, 853–856. doi: 10.1038/368853a0
- Ryu, M. H., Kang, I. H., Nelson, M. D., Jensen, T. M., Lyuksyutova, A. I., Siltberg-Liberles, J., et al. (2014). Engineering adenylyl cyclases regulated by near-infrared window light. *Proc. Natl. Acad. Sci. U.S.A.* 111, 10167–10172. doi: 10.1073/pnas.1324301111
- Ryu, M. H., Moskvina, O. V., Siltberg-Liberles, J., and Gomelsky, M. (2010). Natural and engineered photoactivated nucleotidyl cyclases for optogenetic applications. *J. Biol. Chem.* 285, 41501–41508. doi: 10.1074/jbc.M110.177600
- Sample, V., Dipilato, L. M., Yang, J. H., Ni, Q., Saucerman, J. J., and Zhang, J. (2012). Regulation of nuclear PKA revealed by spatiotemporal manipulation of cyclic AMP. *Nat. Chem. Biol.* 8, 375–382. doi: 10.1038/nchembio.799
- Sarma, G. N., Kinderman, F. S., Kim, C., Von Daake, S., Chen, L., Wang, B. C., et al. (2010). Structure of D-AKAP2:PKA RI complex: insights into AKAP specificity and selectivity. *Structure* 18, 155–166. doi: 10.1016/j.str.2009.12.012
- Saucerman, J. J., Zhang, J., Martin, J. C., Peng, L. X., Stenbit, A. E., Tsien, R. Y., et al. (2006). Systems analysis of PKA-mediated phosphorylation gradients in live cardiac myocytes. *Proc. Natl. Acad. Sci. U.S.A.* 103, 12923–12928. doi: 10.1073/pnas.0600137103
- Schroder-Lang, S., Schwarzel, M., Seifert, R., Strunker, T., Kateriya, S., Looser, J., et al. (2007). Fast manipulation of cellular cAMP level by light in vivo. *Nat. Methods* 4, 39–42. doi: 10.1038/nmeth975
- Scott, J. D., and Pawson, T. (2009). Cell signaling in space and time: where proteins come together and when they're apart. *Science* 326, 1220–1224. doi: 10.1126/science.1175668
- Shafer, O. T., Kim, D. J., Dunbar-Yaffe, R., Nikolaev, V. O., Lohse, M. J., and Taghert, P. H. (2008). Widespread receptivity to neuropeptide PDF throughout the neuronal circadian clock network of *Drosophila* revealed by real-time cyclic AMP imaging. *Neuron* 58, 223–237. doi: 10.1016/j.neuron.2008.02.018
- Shelly, M., Lim, B. K., Cancedda, L., Heilshorn, S. C., Gao, H., and Poo, M. M. (2010). Local and long-range reciprocal regulation of cAMP and cGMP in axon/dendrite formation. *Science* 327, 547–552. doi: 10.1126/science.1179735
- Sin, Y. Y., Edwards, H. V., Li, X., Day, J. P., Christian, F., Dunlop, A. J., et al. (2011). Disruption of the cyclic AMP phosphodiesterase-4 (PDE4)-HSP20 complex attenuates the beta-agonist induced hypertrophic response in cardiac myocytes. *J. Mol. Cell Cardiol.* 50, 872–883. doi: 10.1016/j.yjmcc.2011.02.006
- Sprenger, J. U., Perera, R. K., Steinbrecher, J. H., Lehnart, S. E., Maier, L. S., Hasenfuss, G., et al. (2015). In vivo model with targeted cAMP biosensor reveals changes in receptor-microdomain communication in cardiac disease. *Nat. Commun.* 6, 6965. doi: 10.1038/ncomms7965
- Stapleton, M. P., and Black, J. (1997). *Sir James Black and Propranolol. The Role of the Basic Sciences in the History of Cardiovascular Pharmacology*. (Texas, TX: Texas Heart Institute journal/from the Texas Heart Institute of St Luke's Episcopal Hospital, Texas Children's Hospital), 336–342.
- Stierl, M., Stumpf, P., Udvari, D., Gueta, R., Hagedorn, R., Losi, A., et al. (2011). Light modulation of cellular cAMP by a small bacterial photoactivated adenylyl cyclase, bPAC, of the soil bacterium *Beggiatoa*. *J. Biol. Chem.* 286, 1181–1188. doi: 10.1074/jbc.M110.185496
- Terrin, A., Di Benedetto, G., Pertegato, V., Cheung, Y. F., Baillie, G., Lynch, M. J., et al. (2006). PGE(1) stimulation of HEK293 cells generates multiple contiguous domains with different [cAMP]: role of compartmentalized phosphodiesterases. *J. Cell Biol.* 175, 441–451. doi: 10.1083/jcb.200605050
- Terrin, A., Monterisi, S., Stangherlin, A., Zoccarato, A., Koschinski, A., Surdo, N. C., et al. (2012). PKA and PDE4D3 anchoring to AKAP9 provides distinct regulation of cAMP signals at the centrosome. *J. Cell Biol.* 198, 607–621. doi: 10.1083/jcb.201201059
- Torheim, E. A., Jarnaess, E., Lygren, B., and Tasken, K. (2009). Design of proteolytically stable RI-anchoring disruptor peptidomimetics for in vivo studies of anchored type I protein kinase A-mediated signalling. *Biochem. J.* 424, 69–78. doi: 10.1042/BJ20090933
- Vecsey, C. G., Pirez, N., and Griffith, L. C. (2014). The *Drosophila* neuropeptides PDF and sNPF have opposing electrophysiological and molecular effects on central neurons. *J. Neurophysiol.* 111, 1033–1045. doi: 10.1152/jn.00712.2013
- Wachten, S., Masada, N., Ayling, L. J., Ciruela, A., Nikolaev, V. O., Lohse, M. J., et al. (2010). Distinct pools of cAMP centre on different isoforms of adenylyl cyclase in pituitary-derived GH3B6 cells. *J. Cell Sci.* 123, 95–106. doi: 10.1242/jcs.058594
- Walker-Gray, R., and Gold, M. G. (2015). Structure-based bacteriophage screening for AKAP-selective PKA regulatory subunit variants. *Methods Mol. Biol.* 1294, 167–180. doi: 10.1007/978-1-4939-2537-7_13
- Wang, Y., Ho, T. G., Bertinetti, D., Neddermann, M., Franz, E., Mo, G. C., et al. (2014). Isoform-selective disruption of AKAP-localized PKA using hydrocarbon stapled peptides. *ACS Chem. Biol.* 9, 635–642. doi: 10.1021/cb400900r
- Wang, Y., Ho, T. G., Franz, E., Hermann, J. S., Smith, F. D., Hehnl, H., et al. (2015). PKA-Type I selective constrained peptide disruptors of AKAP complexes. *ACS Chem. Biol.* 10, 1502–1510. doi: 10.1021/acscchembio.5b00009
- Weissenberger, S., Schultheis, C., Liewald, J. F., Erbguth, K., Nagel, G., and Gottschalk, A. (2011). PACalpha—an optogenetic tool for in vivo manipulation of cellular cAMP levels, neurotransmitter release, and behavior in *Caenorhabditis elegans*. *J. Neurochem.* 116, 616–625. doi: 10.1111/j.1471-4159.2010.07148.x
- Willoughby, D., and Cooper, D. M. (2006). Ca²⁺ stimulation of adenylyl cyclase generates dynamic oscillations in cyclic AMP. *J. Cell Sci.* 119, 828–836. doi: 10.1242/jcs.02812
- Willoughby, D., and Cooper, D. M. (2008). Live-cell imaging of cAMP dynamics. *Nat. Methods* 5, 29–36. doi: 10.1038/nmeth1135
- Willoughby, D., Everett, K. L., Halls, M. L., Pacheco, J., Skroblin, P., Vaca, L., et al. (2012). Direct binding between Orai1 and AC8 mediates dynamic interplay between Ca²⁺ and cAMP signaling. *Sci. Signal.* 5:ra29. doi: 10.1126/scisignal.2002299
- Willoughby, D., Masada, N., Wachten, S., Pagano, M., Halls, M. L., Everett, K. L., et al. (2010). AKAP79/150 interacts with AC8 and regulates Ca²⁺-dependent cAMP synthesis in pancreatic and neuronal systems. *J. Biol. Chem.* 285, 20328–20342. doi: 10.1074/jbc.M110.120725
- Willoughby, D., Ong, H. L., De Souza, L. B., Wachten, S., Ambudkar, I. S., and Cooper, D. M. (2014). TRPC1 contributes to the Ca²⁺-dependent regulation of adenylyl cyclases. *Biochem. J.* 464, 73–84. doi: 10.1042/BJ20140766
- Willoughby, D., Wong, W., Schaack, J., Scott, J. D., and Cooper, D. M. (2006). An anchored PKA and PDE4 complex regulates subplasmalemmal cAMP dynamics. *EMBO J.* 25, 2051–2061. doi: 10.1038/sj.emboj.7601113
- Xin, W., Tran, T. M., Richter, W., Clark, R. B., and Rich, T. C. (2008). Roles of GRK and PDE4 activities in the regulation of beta2 adrenergic signaling. *J. Gen. Physiol.* 131, 349–364. doi: 10.1085/jgp.200709881
- Yao, Z., and Shafer, O. T. (2014). The *Drosophila* circadian clock is a variably coupled network of multiple peptidergic units. *Science* 343, 1516–1520. doi: 10.1126/science.1251285
- Zaccolo, M., De Giorgi, F., Cho, C. Y., Feng, L., Knapp, T., Negulescu, P. A., et al. (2000). A genetically encoded, fluorescent indicator for cyclic AMP in living cells. *Nat. Cell Biol.* 2, 25–29. doi: 10.1038/71345
- Zaccolo, M., and Pozzan, T. (2002). Discrete microdomains with high concentration of cAMP in stimulated rat neonatal cardiac myocytes. *Science* 295, 1711–1715. doi: 10.1126/science.1069982
- Zhang, F., Qi, Y., Zhou, K., Zhang, G., Linask, K., and Xu, H. (2015). The cAMP phosphodiesterase Prune localizes to the mitochondrial matrix and promotes mtDNA replication by stabilizing TFAM. *EMBO Rep.* 16, 520–527. doi: 10.15252/embr.201439636
- Zhang, J., Hupfeld, C. J., Taylor, S. S., Olefsky, J. M., and Tsien, R. Y. (2005). Insulin disrupts beta-adrenergic signalling to protein kinase A in adipocytes. *Nature* 437, 569–573. doi: 10.1038/nature04140
- Zhang, J., Ma, Y., Taylor, S. S., and Tsien, R. Y. (2001). Genetically encoded reporters of protein kinase A activity reveal impact of substrate tethering. *Proc. Natl. Acad. Sci. U.S.A.* 98, 14997–15002. doi: 10.1073/pnas.211566798

Conflict of Interest Statement: The authors declare that the research was conducted in the absence of any commercial or financial relationships that could be construed as a potential conflict of interest.

Copyright © 2015 Patel and Gold. This is an open-access article distributed under the terms of the Creative Commons Attribution License (CC BY). The use, distribution or reproduction in other forums is permitted, provided the original author(s) or licensor are credited and that the original publication in this journal is cited, in accordance with accepted academic practice. No use, distribution or reproduction is permitted which does not comply with these terms.