



Effects of Intrauterine Inflammation on Cortical Gray Matter of Near-Term Lambs

Vanesa Stojanovska^{1†}, Anzari Atik^{1†}, Ilias Nitsos¹, Béatrice Skiöld², Samantha K. Barton^{1,3}, Valerie A. Zahra¹, Karyn Rodgers¹, Stuart B. Hooper^{1,4}, Graeme R. Polglase^{1,4‡} and Robert Galinsky^{1,4*‡}

OPEN ACCESS

Edited by:

Olivier Baud,
Geneva University Hospitals (HUG),
Switzerland

Reviewed by:

Roland H. Hentschel,
Universitätsklinikum Freiburg,
Germany
Marina Colella,
Institut National de la Santé et de la
Recherche Médicale (INSERM),
France

*Correspondence:

Robert Galinsky
robert.galinsky@hudson.org.au

[†]These authors have contributed
equally to this work.

[‡]Co-senior authorship.

Specialty section:

This article was submitted to
Neonatology,
a section of the journal
Frontiers in Pediatrics

Received: 09 January 2018

Accepted: 01 May 2018

Published: 15 June 2018

Citation:

Stojanovska V, Atik A, Nitsos I,
Skiöld B, Barton SK, Zahra VA,
Rodgers K, Hooper SB, Polglase GR
and Galinsky R (2018) Effects of
Intrauterine Inflammation on Cortical
Gray Matter of Near-Term Lambs.
Front. Pediatr. 6:145.
doi: 10.3389/fped.2018.00145

¹ The Ritchie Centre, Hudson Institute of Medical Research, Clayton, VIC, Australia, ² Department of Women's and Children's Health, Karolinska Institute, Stockholm, Sweden, ³ Centre of Clinical Brain Sciences, University of Edinburgh, Edinburgh, United Kingdom, ⁴ Department of Obstetrics and Gynaecology, Monash University, Clayton, VIC, Australia

Introduction: Ventilation causes cerebral white matter inflammation and injury, which is exacerbated by intrauterine inflammation. However, the effects on cortical gray matter are not well-known. Our aim was to examine the effect of ventilation on the cerebral cortex of near-term lambs exposed to intrauterine inflammation.

Method: Pregnant ewes at 119 ± 1 days gestation received an intra-amniotic injection of saline or lipopolysaccharide (LPS; 10 mg). Seven days later, lambs were randomized to either a high tidal volume injurious ventilation strategy (INJ_{SAL} $N = 6$, INJ_{LPS} $N = 5$) or a protective ventilation strategy (PROT_{SAL} $N = 5$, PROT_{LPS} $N = 6$). Respiratory parameters, heart rate and blood gases were monitored during the neonatal period. At post-mortem, the brain was collected and processed for immunohistochemical assessment. Neuronal density (NeuN), apoptotic cell death (caspase 8 and TUNEL), microglial density (Iba-1), astrocytic density (GFAP), and vascular protein extravasation (sheep serum) were assessed within the frontal, parietal, temporal and occipital lobes of the cerebral cortex.

Results: A significant reduction in the number of neurons in all cortical layers except 4 was observed in LPS-exposed lambs compared to controls (layer #1: $p = 0.041$; layers #2 + 3: $p = 0.023$; layers #5 + 6: $p = 0.016$). LPS treatment caused a significant increase in gray matter area, indicative of edema. LPS+ventilation did not cause apoptotic cell death in the gray matter. Astrogliosis was not observed following PROT or INJ ventilation, with or without LPS exposure. LPS exposure was associated with vascular protein extravasation.

Conclusion: Ventilation had little effect on gray matter inflammation and injury. Intrauterine inflammation reduced neuronal cell density, caused edema of the cortical gray matter, and blood vessel extravasation in the brain of near-term lambs.

Keywords: chorioamnionitis, intrauterine inflammation, gray matter, ventilation, neuronal loss

INTRODUCTION

Preterm birth (defined as <37 weeks gestation) affects approximately 15 million births worldwide annually, and is a major cause of neonatal morbidity and mortality (1, 2). Preterm infants have underdeveloped lungs, thus, there is an increased requirement for respiratory support in the delivery room. Whilst respiratory support is a life-saving intervention, manual or automated resuscitation techniques are poorly controlled, and this can lead to injurious effects on the pulmonary, cardiovascular, and cerebral systems (3–6). Recent studies have shown that the initiation of respiratory support causes systemic inflammation and haemodynamic instability resulting in brain inflammation and injury (5, 7). This condition, termed “ventilation-induced brain injury” (VIBI), is associated with diffuse white matter gliosis and compromised blood brain barrier integrity (8). Importantly, improving ventilation in the delivery room can reduce markers of brain inflammation and injury (7, 9). However, these studies have focused extensively on the white matter. The acute effect of ventilation on cortical gray matter in preterm neonates remains unknown. This is a significant gap in research, given the vulnerability of gray matter to injury in the near-term brain (10). Injury to the cortical gray matter can contribute to cognitive and physical disability such as cerebral palsy, a neurodevelopmental disorder commonly associated with preterm birth and intrauterine infection and inflammation (11, 12).

Furthermore, approximately 60% of preterm neonates are exposed to chorioamnionitis and display an increased risk and severity of neurological complications (9, 13–17). There is a clear association between white matter injury following preterm birth and intrauterine infection and inflammation (7, 14, 18–22). We previously showed that improving the ventilation strategy in lambs exposed to intrauterine inflammation, via intra-amniotic LPS, did not reduce VIBI in the white matter (7). However, little is known about the effects on the cortical gray matter.

We aimed to assess the effects of ventilation on the cortical gray matter, and to determine whether intrauterine inflammation exacerbates cortical gray matter inflammation and injury. The second aim was to determine whether a protective ventilation strategy could mitigate markers of inflammation and injury in the cortical gray matter in preterm lambs, in the presence or absence of intrauterine inflammation.

MATERIALS AND METHODS

Ethical Approval

The experimental protocol was conducted according to the guidelines established by the National Health and Medical Research Council of Australia and was approved by the Monash Medical Centre animal ethics committee (Animal Ethics #MMCA-2015-37).

Preterm Delivery and Ventilation

Ultrasound guided intra-amniotic (IA) injection of Lipopolysaccharide (LPS) (10 mg/d; from *Escherichia coli* 055:B5; Sigma-Aldrich, Australia) or saline was administered

in Border Leicester ewe’s (sourced from Monash University, Churchill) at 119 ± 1 days of gestation (term ~148 days; $N = 5-6$ /group). Successful IA placement of injection was confirmed with electrolyte analysis of a sample of amniotic fluid (23).

At 126 ± 1 days, pregnant ewes were anesthetized with intravenous (IV) sodium thiopentane, and inhalation of isoflurane (1.5–3.0% in 100% oxygen, Bomac Animal Health, NSW, Australia), and underwent cesarean section. Lambs were exposed, and polyvinyl catheters containing heparinised saline were placed into a jugular vein and carotid artery, for infusion of analgesia and for withdrawing blood for blood-gas analysis. Lambs were intubated (cuffed 4–4.5 mm) then randomly assigned to receive either a “protective ventilation” strategy (PROT_{SAL}, $N = 5$ or PROT_{LPS}, $N = 6$) or an “injurious ventilation” strategy (INJ_{SAL}, $N = 6$ or INJ_{LPS}, $N = 5$) as described previously (9).

Briefly, the “protective ventilation” strategy included prophylactic surfactant (100 mg/kg, Curosurf, Chiesi Pharma, Italy), one sustained inflation for 30 s with a peak inflation pressure (PIP) of 35 cmH₂O (Neopuff; Fisher and Paykel Healthcare, Panmure, Auckland, New Zealand), followed by ventilation (Babylog 8,000+; Dräger, Lübeck, Germany) using volume guarantee mode with a set tidal volume (V_T) of 7 mL/kg, and a positive end expiratory pressure (PEEP) of 5 cmH₂O for 90 min. The “injurious ventilation” strategy targeted a V_T of 10–12 mL/kg for the first 15 min, with 0 PEEP, with a max PIP set at 50 cmH₂O to prevent pneumothoraxes. At 15 min lambs in the injury group were placed on volume guarantee mode with a V_T of 7 mL/kg, and a PEEP of 5 cmH₂O for the remainder of the ventilation period. The fraction of inspired oxygen was initially set at 0.4 in both groups and then subsequently adjusted to maintain arterial oxygen saturation (SaO₂) between 88 and 95%. Respiratory rate was adjusted to maintain partial pressure of carbon dioxide (PaCO₂) between 45 and 55 mmHg. Lamb well-being was monitored by frequent arterial blood gas measurement (ABL30, Radiometer, Copenhagen, Denmark). Ventilator parameters, including PIP, mean airway pressure (PAW) and V_T were recorded in real time (PowerLab; ADInstruments, Castle Hill, NSW, Australia). Physiological parameters including arterial oxygen saturation, heart rate (Massimo, Irvine, CA) and cerebral oxygenation (SctO₂, by Near Infrared Spectroscopy; Casmed, USA) were similarly recorded.

Tissue Collection

After 120 min of ventilation, lambs were euthanized with an overdose of sodium pentobarbitone (100 mg/kg IV). Brains from the PROT_{SAL} and INJ_{SAL} groups were transcardially perfused *in situ* with isotonic saline and 4% paraformaldehyde in 0.1 M phosphate buffer (PFA; pH 7.4) and left in fixative overnight. The brain was halved and then cut coronally into 5 mm thick blocks. Blocks of the right cerebral hemisphere were then further fixed in 4% PFA (4 days, 4°C) and embedded in paraffin. Brains from the PROT_{LPS} and INJ_{LPS} groups were excised, halved along the midline and the right cerebral hemisphere was immersion fixed in 4% PFA (overnight, 4°C). The hemisphere was then cut coronally into 5 mm thick blocks and further fixed in 10% PFA (4 days; 4°C).

Immunohistochemistry

Ten Micrometer sections from equivalent sites from each lobe (frontal, parietal, temporal and occipital) of the right cerebral hemisphere (four sections/animal) were reacted with the following antibodies: mouse anti-NeuN (1:200, MAB377; Millipore) to identify neural nuclei, rabbit anti-caspase 8 (1:100, orb10241; Biorbyt, USA) to label for apoptotic cell death, rabbit anti-Iba-1 (1:1,500, 019-19741; WAKO Pure Chemical Industries, Osaka, Japan) to identify microglia, rabbit anti-GFAP (1:1,000, Zo2334; DAKO, Carpinteria, CA) to identify astrocytes, and rabbit anti-serum albumin (1:1,000, Accurate Chemical and Scientific Corporation, USA) to assess blood brain barrier permeability. All sections were incubated with appropriate Biotinylated secondary antibodies (1:200) and reacted using the avidin-biotin complex elite kit (Vector Laboratories, Burlingame, CA). The colorimetric TUNEL system (Promega, Madison, WI) was also used to identify apoptotic cell death (24).

Imaging and Tissue Analysis

All brain sections were imaged using a slide scanner (Leica Brightfield Aperio ScanScope AT Turbo). Analyses were performed on coded slides (observer blinded to treatment) using either ImageScope (Aperio Technologies, California, USA; NeuN, sheep serum, TUNEL analyses) or ImageJ (NIH image, Bethesda, Maryland, USA; Iba-1 and GFAP analyses). Immunohistochemical analyses were performed on one section from each of the frontal, parietal, temporal and occipital lobes from each lamb; the same regions of gray matter were assessed in each animal. NeuN⁺ neurons were counted in one field of view (FOV; 0.56 mm²) in three gyri as previously described (25). Each field was further divided into four bins for the analysis of the different cortical layers (bin 1: cortical layer 1; bin 2: layers 2 + 3; bin 3: layer 4; bin 4: layers 5 + 6). Gray matter area was measured in NeuN labeled sections using Aperio ImageScope software. Gray matter area was determined by measuring the total combined area (mm²) from the four bins used to count NeuN⁺ neurons within each cortical layer. Caspase 8⁺ and TUNEL⁺ cells were counted throughout the cortical gray matter. Iba-1⁺ resting (ramified) and activated (amoeboid) microglia (distinguished by morphology) and GFAP-immunoreactive astrocytes were counted in random fields of view throughout the cortical gray matter (12 fields/section/lamb; FOV: 0.140 mm²). The total number of vessel profiles with serum albumin extravasation within the cortical gray matter were counted, and expressed as the total number of leaky vessels per entire cortical gray matter area.

Statistical Analysis

Physiological data was analyzed using a 2-way repeated measures ANOVA using treatment (LPS vs. SAL) and ventilation (INJ vs. PROT ventilation) as the variables. The histological data was analyzed using a 2-way ANOVA. *Post-hoc* analysis was conducted using the Holm-Sidak test. All data are presented as mean ± SEM, values of $p < 0.05$ were considered statistically significant.

RESULTS

Ventilation and Oxygenation

Tidal volume was significantly higher from 4 to 15 min in INJ_{SAL} and INJ_{LPS} compared to PROT_{SAL} and PROT_{LPS} ($*p < 0.05$; **Figure 1A**). There was no difference from 15 min when INJ lambs were placed on the PROT ventilation strategy. Similarly, PIP was significantly higher in the INJ ventilated lambs compared to those receiving the PROT strategy from 3 to 15 min ($*p < 0.05$; **Figure 1B**).

Overall, group mean PAW tended to be higher in INJ_{LPS} ($*p < 0.05$) and PROT_{LPS} ($*p < 0.05$) lambs compared to PROT_{SAL} lambs. PAW was significantly higher in INJ_{LPS} and PROT_{LPS} lambs at 3–7 min compared to PROT_{SAL} lambs (**Figure 1C**). Heart rate transiently increased in INJ_{SAL} lambs at 10 min compared to the other groups (**Figure 1D**) but no other differences in heart rate were observed.

PaCO₂ was not different between groups throughout the ventilation procedure (**Figure 2A**). PaO₂ in the INJ_{LPS} group was significantly higher at 15 and 30 min compared to the INJ_{SAL} ventilation cohort ($*p < 0.05$; **Figure 2B**). Similarly, PaO₂ was significantly higher in the PROT_{LPS} group at 15 compared to the INJ_{SAL} group at 30 min ($*p < 0.05$; **Figure 2B**). No other differences were observed. SaO₂ was not different between the groups throughout the ventilation procedure (**Figure 2C**). SctO₂ was lower in INJ_{LPS} lambs compared to the PROT_{LPS} group at 1 min ($*p < 0.05$; **Figure 2D**) but no other differences were observed.

Neuronal Density

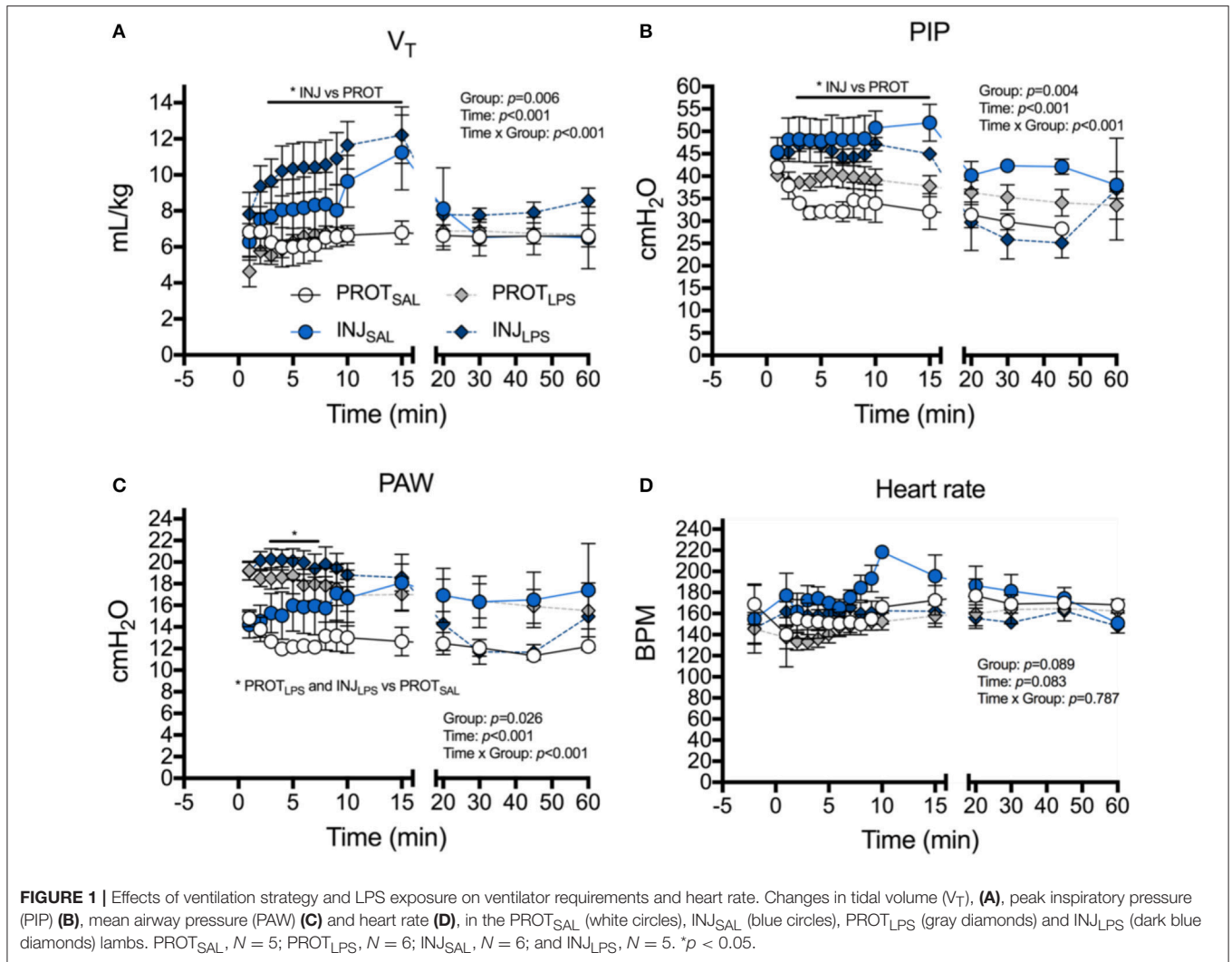
The number of NeuN⁺ neurons from all 6 cortical layers were counted (total 1 mm² area) (**Figures 3A–D**). A significant reduction in the number of neurons in all cortical layers except 4 was observed in LPS lambs compared to controls (layer #1: $p = 0.041$; layers #2 + 3: $p = 0.023$; layers #5 + 6: $p = 0.016$) (**Figure 3E**). No significant differences in the number of NeuN⁺ neurons in cortical layer #4 were observed (**Figure 3E**). Furthermore, gray matter area was significantly higher in the LPS-treated groups ($p < 0.0001$) when compared to the saline-treated lambs, whilst ventilation had no effect (**Figure 3F**).

Apoptotic Cell Death

The number of Caspase 8⁺ cells in the cortical gray matter was significantly reduced in the PROT_{LPS} and INJ_{LPS} cohorts ($p = 0.006$; $N = 5/6$) (**Figures 4A–E**). No significant differences in the number of TUNEL⁺ cells were observed between the groups (**Figure 4F**).

Microglia

To determine the effect of LPS and ventilation strategy on microglial activation, Iba-1⁺ cells from the cortical gray matter were counted (total 1 mm² area) (**Figures 5A–D**). Microglia showing ramified dendritic processes were considered to be in a resting/quiescent state, and those displaying retractive and thickened processes and/or are amoeboid in shape are considered to be activated. No significant differences in the number of activated microglia were observed between groups (LPS: $p = 0.87$;



vent: $p = 0.16$; LPS \times vent: $p = 0.99$) (Figure 5E). No significant differences in the number of resting microglia were observed between the treatment groups (LPS: $p = 0.08$; vent: $p = 0.13$; LPS \times vent: $p = 0.38$) (Figure 5F).

Astrocyte Number

To determine whether PROT or INJ ventilation, or LPS exposure induces astrogliosis, GFAP⁺ astrocytes from the cortical gray matter were counted (total 1 mm² area) (Figures 6A–D). No significant differences in astrocyte numbers were observed between all groups (LPS: $p = 0.98$; vent: $p = 0.95$; LPS \times vent: $p = 0.46$) (Figure 6E).

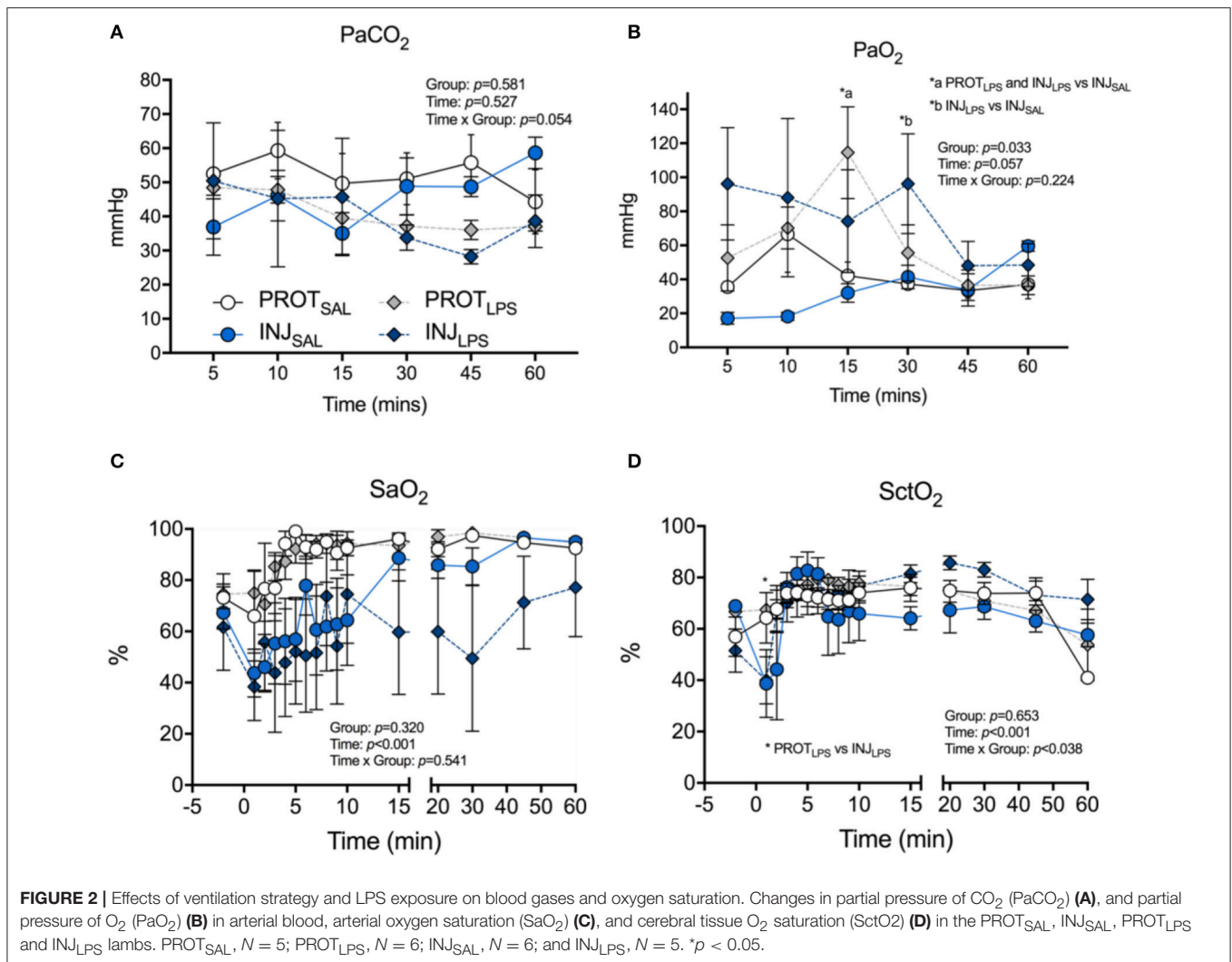
Blood Brain Barrier Permeability

The total number of blood vessel profiles with protein extravasation in the cortical gray matter were counted (Figures 7A–D). LPS treatment was associated with blood vessel protein extravasation (LPS: $p = 0.006$), whereas ventilation alone or LPS combined with ventilation were not associated with

a significant increase in extravasation (vent: $p = 0.594$; LPS \times vent: $p = 0.483$) (Figure 7E).

DISCUSSION

Respiratory support is a life-sustaining intervention for preterm neonates that cannot breathe sufficiently or autonomously at birth, however, if delivered inappropriately, can cause preterm white matter injury (3, 5, 6, 9). In addition, ventilation after chorioamnionitis exacerbates white matter inflammation and injury (7, 9). However, the effect on the gray matter is not known. In this study, we found that LPS exposure, irrespective of ventilation strategy, caused gray matter edema, reduced neuronal cell density throughout the cortical layers and increased vascular protein extravasation. While injurious ventilation tended to increase activated microglial number, no discernible effect of ventilation strategy was observed. These findings suggest that improving ventilation of preterm infants exposed to chorioamnionitis may not reduce gray matter inflammation and injury.



We have previously demonstrated that injuriously high tidal volumes initiate white matter inflammation and injury via two mechanisms; systemic inflammation and haemodynamic instability (7, 9). In this study, V_T was significantly higher in injuriously ventilated groups compared to gentle ventilation within the first 15 min. LPS-exposed lambs had a higher PAW compared to the PROT_{SAL} cohort. This indicated better compliance initially, but this effect was limited to 4 min within the initial 15 min of ventilation. Furthermore, it should be noted that PaO₂ was significantly higher in the LPS-treated groups compared to lambs that received saline. Exposure to LPS/intrauterine inflammation causes thinning of the tissue-airspace barrier resulting in improved gas exchange initially after birth (26, 27). This results in improved PaO₂ at the same inspired oxygen.

White matter brain injury has been reported in preterm infants exposed to intrauterine infection and inflammation (7, 14, 28–30). Injurious high V_T ventilation increases neuroinflammation, protein extravasation, and lipid

peroxidation in the white matter of preterm lambs. Further, LPS exposure exacerbates periventricular white matter injury, irrespective of the ventilation strategy used (PROT or INJ). Indeed, LPS exposure upregulates IL-6 and IL-8 cytokine expression within the white matter, and is associated with increased microglial activation, astrogliosis, apoptosis, and protein extravasation (7). Whilst no significant differences in the number of activated microglia were observed, the immunohistochemical labeling shows clear structural remodeling of microglia (amoeboid morphology) adjacent to those with a resting, ramified phenotype in the gray matter, which would account for the high variability in the counts. Our results are in contrast to ventilation and LPS-induced white matter injury, in which the underlying mechanism of damage is thought to be severe microglial-induced inflammation. Nevertheless, our data suggest that injurious ventilation had little effect on acute cortical gray matter inflammation and injury in the late preterm brain. A recent study in preterm infants has shown cortical gray matter injury using MRI, and subsequent lower cognitive scores (31). Prolonged mechanical ventilation was associated

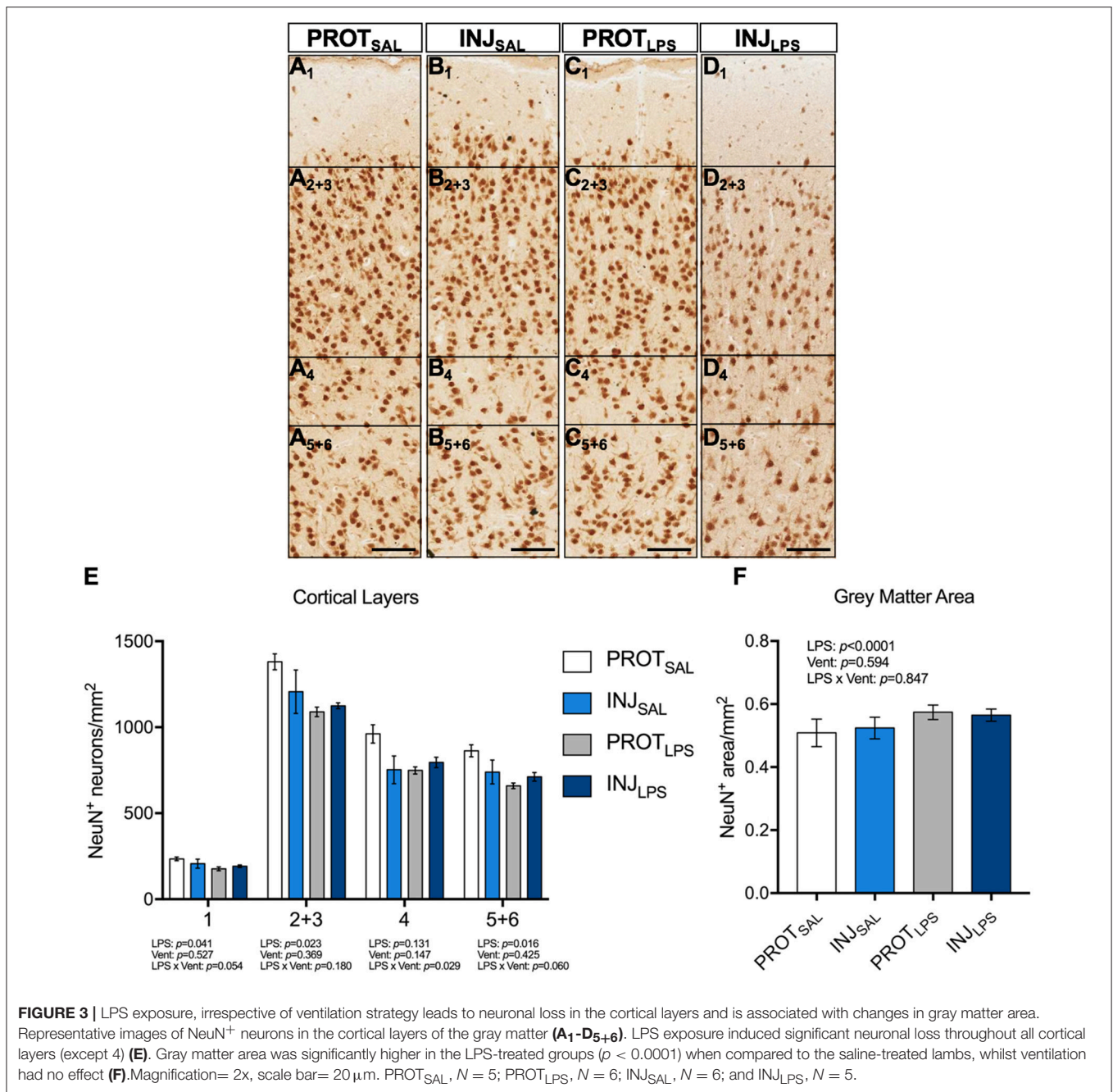


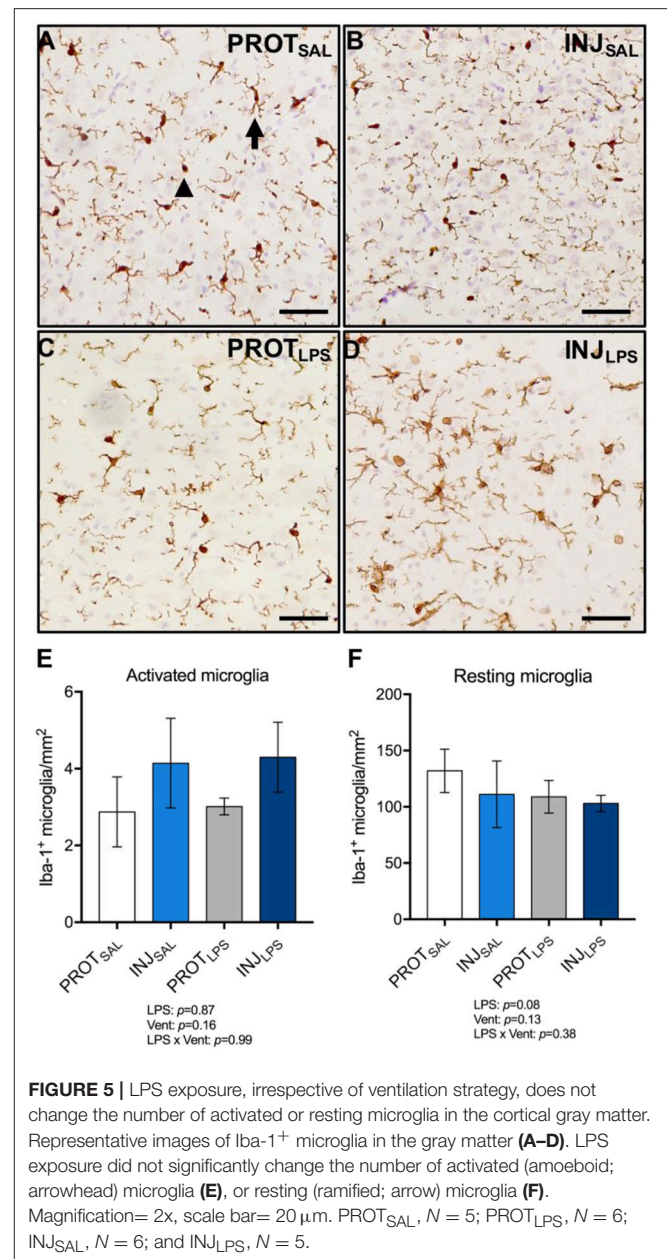
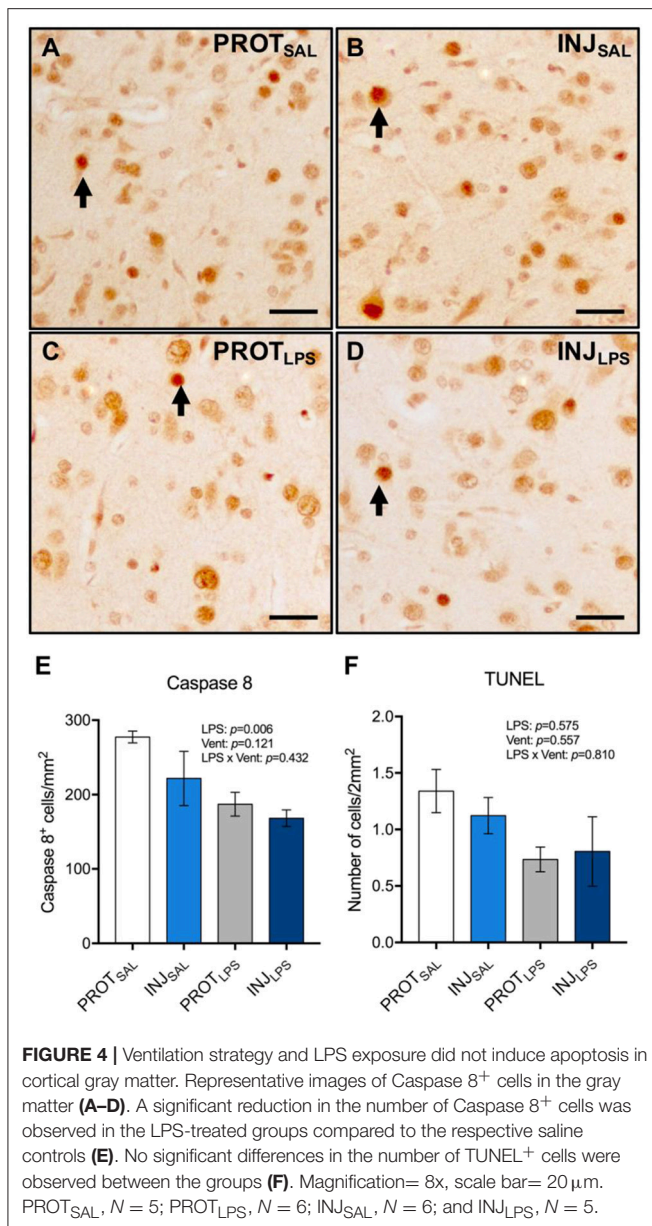
FIGURE 3 | LPS exposure, irrespective of ventilation strategy leads to neuronal loss in the cortical layers and is associated with changes in gray matter area. Representative images of NeuN⁺ neurons in the cortical layers of the gray matter (A₁-D₅₊₆). LPS exposure induced significant neuronal loss throughout all cortical layers (except 4) (E). Gray matter area was significantly higher in the LPS-treated groups ($p < 0.0001$) when compared to the saline-treated lambs, whilst ventilation had no effect (F). Magnification = 2x, scale bar = 20 μm. PROT_{SAL}, N = 5; PROT_{LPS}, N = 6; INJ_{SAL}, N = 6; and INJ_{LPS}, N = 5.

with a higher rate of brain abnormalities on term equivalent age MRI. Thus, while the initial resuscitation strategy may not produce immediate effects within the cortical gray matter, prolonged ventilation appears to have adverse consequences for the preterm brain, which include but are not limited to cortical gray matter.

It is possible that VIBI within the cortical gray matter takes longer than 2h to manifest. By contrast we have previously demonstrated that this time period is sufficient for the development of inflammation and injury within the white matter (7, 9). Further studies are required to determine whether

gray matter inflammation and injury is present days after the initial resuscitation insult. Furthermore, it should be noted that infants that receive prolonged ventilatory support would have many confounding factors that may contribute to brain injury.

In this study, LPS treatment caused a significant reduction in the number of NeuN⁺ neurons in all cortical layers, except layer 4. Neuronal loss and reduced gray matter volumes have been observed in preterm infants that received prolonged respiratory support and/or were exposed to intrauterine inflammation (32–39). Whilst the mechanisms of neuronal death and changes in

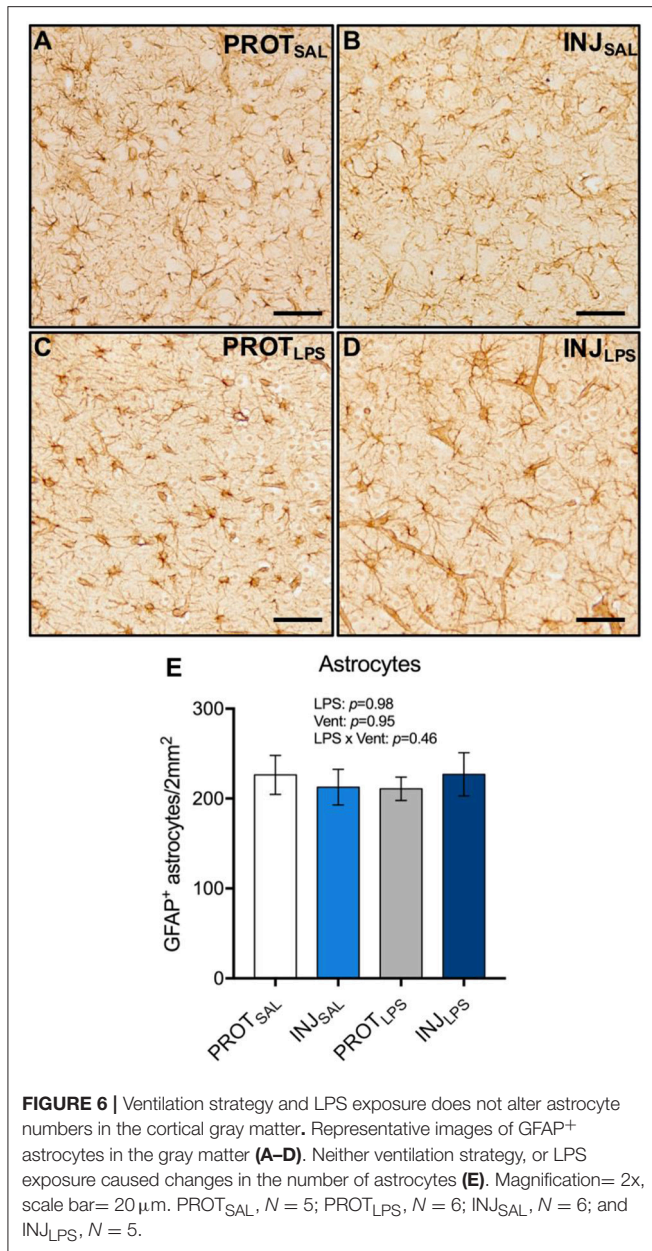


gray matter volumes have not been elucidated, it is thought that they may have some overlap with white matter injury. Furthermore, we observed reduced apoptosis in the LPS-exposed cohorts. However, the decrease in apoptosis simply reflects the increased cortical gray matter area in the LPS-treated groups, indicative of edema. The larger area would reduce cell density if the same number of cells were present.

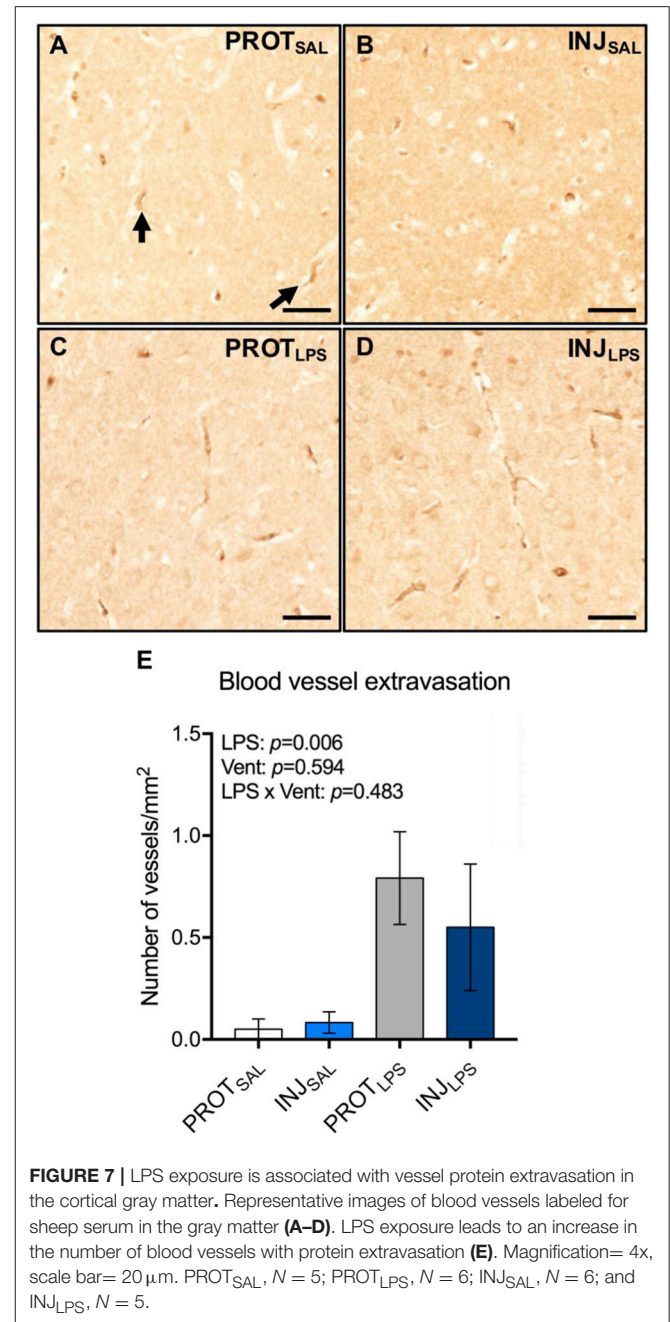
Neither ventilation strategy or LPS exposure led to significant changes in the number of astrocytes in the cortical gray matter. There are limited data regarding astrogliosis within the cortical gray matter following chorioamnionitis. However, similar to microglia, astrocytes can modulate inflammatory responses within the brain, particularly through their ability to participate in pro-inflammatory cytokine production (40). The lack of

astrocytosis following ventilation or LPS exposure suggests other mechanisms mediate cortical neuronal injury. Moreover, LPS-exposure was associated with an increase in blood vessel protein extravasation, irrespective of the ventilation strategy. Albumin is the most abundant protein found in blood serum and is not found outside of cerebral blood vessels. However, cerebral blood vessels may become leaky resulting in serum/protein extravasation. This is a known marker of compromised blood brain barrier integrity (7, 9).

This study has some limitations in translation, particularly due to the model being used. While preterm lambs at 126 days gestation have relatively immature lungs and require respiratory support in order to survive, their brains are relatively mature,



and more accurately reflect a near-term infant (41). Indeed, gray matter injury, as detected by MRI in term infants, is likely to be more prominent after severe insults, such as moderate-to-severe asphyxia/hypoxic injury (42). Thus, it may be that the insult from ventilation does not cause overt cortical injury in the late-preterm brain acutely after birth. We did not assess maturation of the neurons in this study. Previous studies in humans and sheep have shown maturational arrest of oligodendrocytes and neurons is a hallmark of preterm brain injury (43). However, it is unlikely that a brief ventilatory period would alter neural maturation. Finally, the ventilator insult, although pronounced, was only brief (15 min). Prolonged respiratory support has been associated with white and gray matter preterm brain injury (31).



Thus, it is possible that longer ventilation would be associated with greater cortical injury.

In summary, injurious ventilation had little effect on gray matter inflammation or injury. LPS-exposure increased neuronal loss, edema and protein extravasation within the cortical gray matter. Neuronal loss was not accompanied by increased gliosis, which is typically observed in white matter brain injury following mechanical ventilation or chorioamnionitis. These data suggest that the underlying mechanisms and/or timing of cortical gray matter injury following intrauterine inflammation and ventilation may differ from white matter injury.

AUTHOR CONTRIBUTIONS

VS wrote manuscript, analyzed data; AA assisted with data collection analysis and contributed to manuscript writing; IN, BS, SKB, VZ, and KR assisted with animal work; SKB, VZ, and SBH revised the manuscript and contributed to data interpretation. GRP and RG were responsible for study conception, design, manuscript revision and oversight of the research.

FUNDING

This research was supported by National Institute of Health R01HD072848-01A1, a joint National Heart Foundation of

Australia and National Health and Medical Research Council (NHMRC) Career Development Fellowship (GRP: 1105526), an NHMRC-Australian Research Council Dementia Research Development Fellowship (SKB; 1110040) and NHMRC CJ Martin Early Career Fellowship (1090890; RG) NHMRC Principal Research Fellowship (SBH: APP1058537) and the Victorian Government's Operational Infrastructure Support Program.

ACKNOWLEDGMENTS

The authors acknowledge the facilities and scientific and technical assistance of Monash Histology Platform, Department of Anatomy and Developmental Biology, Monash University.

REFERENCES

- Beck S, Wojdyla D, Say L, Betran AP, Merialdi M, Requejo JH, et al. The worldwide incidence of preterm birth: a systematic review of maternal mortality and morbidity. *Bull World Health Organ.* (2010) 88:31–8. doi: 10.2471/BLT.08.062554
- Liu L, Johnson HL, Cousens S, Perin J, Scott S, Lawn JE, et al. Global, regional, and national causes of child mortality: an updated systematic analysis for 2010 with time trends since 2000. *Lancet* (2012) 379:2151–61. doi: 10.1016/S0140-6736(12)60560-1
- Schmolzer GM, Kamlin OC, O'donnell CP, Dawson JA, Morley CJ, Davis PG. Assessment of tidal volume and gas leak during mask ventilation of preterm infants in the delivery room. *Arch Dis Child Fetal Neonatal Ed.* (2010) 95, F393–7. doi: 10.1136/adc.2009.174003
- Poulton DA, Schmolzer GM, Morley CJ, Davis PG. Assessment of chest rise during mask ventilation of preterm infants in the delivery room. *Resuscitation* (2011) 82:175–9. doi: 10.1016/j.resuscitation.2010.10.012
- Polglase GR, Miller SL, Barton SK, Kluckow M, Gill AW, Hooper SB, et al. Respiratory support for premature neonates in the delivery room: effects on cardiovascular function and the development of brain injury. *Pediatr Res.* (2014) 75:682–8. doi: 10.1038/pr.2014.40
- Barton SK, Tolcos M, Miller SL, Roehr CC, Schmolzer GM, Davis PG, et al. Unraveling the links between the initiation of ventilation and brain injury in preterm infants. *Front Pediatr.* (2015) 3:97. doi: 10.3389/fped.2015.00097
- Barton SK, Moss TJM, Hooper SB, Crossley KJ, Gill AW, Kluckow M, et al. Protective ventilation of preterm lambs exposed to acute chorioamnionitis does not reduce ventilation-induced lung or brain injury. *PLoS ONE* (2014) 9:e112402. doi: 10.1371/journal.pone.0112402
- Barton SK, Melville JM, Tolcos M, Polglase GR, Mcdougall AR, Azhan A, et al. Human amnion epithelial cells modulate ventilation-induced white matter pathology in preterm lambs. *Dev Neurosci.* (2015) 37:338–48. doi: 10.1159/000371415
- Polglase GR, Miller SL, Barton SK, Baburamani AA, Wong FY, Aridas JDS, et al. Initiation of Resuscitation with high tidal volumes causes cerebral hemodynamic disturbance, brain inflammation and injury in preterm lambs. *PLoS ONE* (2012) 7:e39535. doi: 10.1371/journal.pone.0039535
- Billiards SS, Pierson CR, Haynes RL, Folkert RD, Kinney HC. Is the late preterm infant more vulnerable to gray matter injury than the term infant? *Clin Perinatol.* (2006) 33:915–33. doi: 10.1016/j.clp.2006.10.003
- Babcock MA, Kostova FV, Ferriero DM, Johnston MV, Brunstrom JE, Hagberg H, et al. Injury to the preterm brain and cerebral palsy: clinical aspects, molecular mechanisms, unanswered questions, and future research directions. *J Child Neurol.* (2009) 24:1064–84. doi: 10.1177/0883073809338957
- Hoon AH, Faria AV. Pathogenesis, neuroimaging and management in children with cerebral palsy born preterm. *Dev Disabil Res Rev.* (2010) 16:302–12. doi: 10.1002/ddrr.127
- Grether JK, Nelson KB. Maternal infection and cerebral palsy in infants of normal birth weight. *JAMA* (1997) 278:207–11. doi: 10.1001/jama.1997.03550030047032
- Duncan JR, Cock ML, Scheerlinck JP, Westcott KT, Mclean C, Harding R, et al. White matter injury after repeated endotoxin exposure in the preterm ovine fetus. *Pediatr Res.* (2002) 52:941–49. doi: 10.1203/00006450-200212000-00021
- Mallard C, Welin AK, Peebles D, Hagberg H, Kjellmer I. White matter injury following systemic endotoxemia or asphyxia in the fetal sheep. *Neurochem. Res.* (2003) 28:215–23. doi: 10.1023/A:1022368915400
- Lahra MM, Gordon A, Jeffery HE. Chorioamnionitis and fetal response in stillbirth. *Am J Obstet Gynecol.* (2007) 196:229.e221–4. doi: 10.1016/j.ajog.2006.10.900
- Shatrov JG, Birch SC, Lam LT, Quinlivan JA, McIntyre S, Mendz GL. Chorioamnionitis and cerebral palsy: a meta-analysis. *Obstet Gynecol.* (2010) 116:387–92. doi: 10.1097/AOG.0b013e3181e90046
- Volpe JJ. Neurobiology of periventricular leukomalacia in the premature infant. *Pediatr Res.* (2001) 50:553–62. doi: 10.1203/00006450-200111000-00003
- Nitsos I, Rees SM, Duncan J, Kramer BW, Harding R, Newnham JP, et al. Chronic exposure to intra-amniotic lipopolysaccharide affects the ovine fetal brain. *J Soc Gynecol Investig.* (2006) 13:239–47. doi: 10.1016/j.jsigi.2006.02.011
- Back SA, Riddle A, McClure MM. Maturation-dependent vulnerability of perinatal white matter in premature birth. *Stroke* (2007) 38:724–30. doi: 10.1161/01.STR.0000254729.27386.05
- Galinsky R, Polglase GR, Hooper SB, Black MJ, Moss TJM. The consequences of chorioamnionitis: preterm birth and effects on development. *J Pregnancy* (2013) 2013:412831. doi: 10.1155/2013/412831
- Nitsos I, Newnham JP, Rees SM, Harding R, Moss TJM. The impact of chronic intrauterine inflammation on the physiologic and neurodevelopmental consequences of intermittent umbilical cord occlusion in fetal sheep. *Reprod Sci.* (2014) 21:658–70. doi: 10.1177/1933719111399928
- Jobe AH, Newnham JP, Willet KE, Moss TJ, Gore Ervin M, Padbury JF, et al. Endotoxin-induced lung maturation in preterm lambs is not mediated by cortisol. *Am J Respir Crit Care Med.* (2000) 162:1656–61. doi: 10.1164/ajrccm.162.5.2003044
- Stadelmann C, Lassmann H. Detection of apoptosis in tissue sections. *Cell Tissue Res.* (2000) 301:19–31. doi: 10.1007/s004410000203
- Atik A, Cheong J, Harding R, Rees S, De Matteo R, Tolcos M. Impact of daily high-dose caffeine exposure on developing white matter of the immature ovine brain. *Pediatr Res.* (2014) 76:54–63. doi: 10.1038/pr.2014.55
- Moss TJ, Newnham JP, Willett KE, Kramer BW, Jobe AH, Ikegami M. Early gestational intra-amniotic endotoxin: lung function, surfactant, and morphology. *Am J Respir Crit Care Med.* (2002) 165:805–11. doi: 10.1164/ajrccm.165.6.2108053
- Choi CW, Lee J, Oh JY, Lee SH, Lee HJ, Kim BI. Protective effect of chorioamnionitis on the development of bronchopulmonary dysplasia triggered by postnatal systemic inflammation in neonatal rats. *Pediatr Res.* (2016) 79:287–94. doi: 10.1038/pr.2015.224

28. Kuypers E, Ophelders D, Jellema RK, Kunzmann S, Gavilanes AW, Kramer BW. White matter injury following fetal inflammatory response syndrome induced by chorioamnionitis and fetal sepsis: lessons from experimental ovine models. *Early Hum. Dev.* (2012) 88:931–36. doi: 10.1016/j.earlhdev.2012.09.011
29. Dilek M, Kumral A, Okyay E, Ozbal S, Tugyan K, Tuzun F, et al. Protective effects of pentoxifylline on lipopolysaccharide-induced white matter injury in a rat model of periventricular leukomalacia. *J Matern Fetal Neonatal Med.* (2013) 26:1865–71. doi: 10.3109/14767058.2013.798290
30. Anblagan D, Pataky R, Evans MJ, Telford EJ, Serag A, Sparrow S, et al. Association between preterm brain injury and exposure to chorioamnionitis during fetal life. *Sci Rep.* (2016) 6:37932. doi: 10.1038/srep37932
31. Brouwer MJ, Kersbergen KJ, Van Kooij BJM, Benders M, Van Haastert IC, Koopman-Elseboom C, et al. Preterm brain injury on term-equivalent age MRI in relation to perinatal factors and neurodevelopmental outcome at two years. *PLoS ONE* (2017) 12:e0177128. doi: 10.1371/journal.pone.0177128.eCollection2017
32. Inder TE, Huppi PS, Warfield S, Kikinis R, Zientara GP, Barnes PD, et al. Periventricular white matter injury in the premature infant is followed by reduced cerebral cortical gray matter volume at term. *Ann Neurol.* (1999) 46:755–60. doi: 10.1002/1531-8249(199911)46:5<AID-ANA11>3.0.CO;2-0
33. Inder TE, Warfield SK, Wang H, Huppi PS, Volpe JJ. Abnormal cerebral structure is present at term in premature infants. *Pediatrics* (2005) 115:286–94. doi: 10.1542/peds.2004-0326
34. Leviton A, Gressens P. Neuronal damage accompanies perinatal white-matter damage. *Trends Neurosci.* (2007) 30:473–78. doi: 10.1016/j.tins.2007.05.009
35. Pierson CR, Folkerth RD, Billiards SS, Trachtenberg FL, Drinkwater ME, Volpe JJ, et al. Gray matter injury associated with periventricular leukomalacia in the premature infant. *Acta Neuropathol.* (2007) 114:619–31. doi: 10.1007/s00401-007-0295-5
36. Jenkins D, Chang E, Singh I. Neuroprotective interventions: is it too late? *J Child Neurol.* (2009) 24:1212–19. doi: 10.1177/0883073809338412
37. Burd I, Brown A, Gonzalez JM, Chai J, Elovitz MA. A mouse model of term chorioamnionitis: unraveling causes of adverse neurological outcomes. *Reprod Sci.* (2011) 18:900–7. doi: 10.1177/1933719111398498
38. Hatfield T, Wing DA, Buss C, Head K, Muftuler LT, Davis EP. Magnetic resonance imaging demonstrates long-term changes in brain structure in children born preterm and exposed to chorioamnionitis. *Am J Obstet Gynecol* (2011) 205:384.e381–8. doi: 10.1016/j.ajog.2011.07.027
39. Albertine KH. Brain Injury in chronically ventilated preterm neonates: collateral damage related to ventilation strategy. *Clin. Perinatol.* (2012) 39:727–40. doi: 10.1016/j.clp.2012.06.017
40. Mcadams RM, Juul SE. The role of cytokines and inflammatory cells in perinatal brain injury. *Neurol. Res. Int.* (2012) 2012:561494. doi: 10.1155/2012/561494
41. Back SA, Riddle A, Dean J, Hohimer AR. The instrumented fetal sheep as a model of cerebral white matter injury in the premature infant. *Neurotherapeutics* (2012) 9:359–70. doi: 10.1007/s13311-012-10108-y
42. Varghese B, Xavier R, Manoj VC, Aneesh MK, Priya PS, Kumar A, et al. Magnetic resonance imaging spectrum of perinatal hypoxic-ischemic brain injury. *Indian J Radiol Imaging* (2016) 26:316–27. doi: 10.4103/0971-3026.190421
43. Back SA. Cerebral white and gray matter injury in newborns: new insights into pathophysiology and management. *Clin Perinatol.* (2014) 41:1–24. doi: 10.1016/j.clp.2013.10.11.1001

Conflict of Interest Statement: The authors declare that the research was conducted in the absence of any commercial or financial relationships that could be construed as a potential conflict of interest.

Copyright © 2018 Stojanovska, Atik, Nitsos, Skiöld, Barton, Zahra, Rodgers, Hooper, Polglase and Galinsky. This is an open-access article distributed under the terms of the Creative Commons Attribution License (CC BY). The use, distribution or reproduction in other forums is permitted, provided the original author(s) and the copyright owner are credited and that the original publication in this journal is cited, in accordance with accepted academic practice. No use, distribution or reproduction is permitted which does not comply with these terms.