



# Concordance of Hormone Receptor Status and BRCA1/2 Mutation Among Women With Synchronous Bilateral Breast Cancer

Liang Huang<sup>1,2†</sup>, Qi Liu<sup>2,3†</sup>, Guan-Tian Lang<sup>1,2†</sup>, A-Yong Cao<sup>1,2\*</sup> and Zhi-Ming Shao<sup>1,2\*</sup>

<sup>1</sup> Department of Breast Surgery, Shanghai Cancer Center/Cancer Institute, Fudan University, Shanghai, China, <sup>2</sup> Department of Oncology, Shanghai Medical College, Fudan University, Shanghai, China, <sup>3</sup> Department of Radiation Oncology, Shanghai Cancer Center/Cancer Institute, Fudan University, Shanghai, China

## OPEN ACCESS

### Edited by:

Carmine De Angelis,  
University of Naples Federico II, Italy

### Reviewed by:

Tarah Ballinger,  
Indiana University, Purdue University  
Indianapolis, United States  
Russell B. McBride,  
Icahn School of Medicine at Mount  
Sinai, United States

### \*Correspondence:

A-Yong Cao  
caoayong0309@sina.com  
Zhi-Ming Shao  
zhimingshao@outlook.com

<sup>†</sup>These authors have contributed  
equally to this work

### Specialty section:

This article was submitted to  
Women's Cancer,  
a section of the journal  
Frontiers in Oncology

Received: 06 July 2019

Accepted: 08 January 2020

Published: 11 February 2020

### Citation:

Huang L, Liu Q, Lang G-T, Cao A-Y  
and Shao Z-M (2020) Concordance of  
Hormone Receptor Status and  
BRCA1/2 Mutation Among Women  
With Synchronous Bilateral Breast  
Cancer. *Front. Oncol.* 10:27.  
doi: 10.3389/fonc.2020.00027

**Goals:** BRCA1/2 mutations are associated with bilateral breast cancer. The extent of concordance between synchronous bilateral breast cancer (SBBC) tumors with respect to hormone receptor expression and BRCA1/2 mutations is unknown. We investigated the distribution of BRCA1/2 mutations and bilateral estrogen receptor (ER) status in SBBC.

**Methods:** A retrospective analysis was performed on 15,337 patients with primary breast cancer who underwent surgical treatment at the Fudan University Shanghai Cancer Center between 2007 and 2014. We included 163 patients with synchronous bilateral breast cancer who had germline BRCA1/2 mutations testing. BRCA1/2 pathogenic/likely pathogenic mutations and other clinicopathological characteristics were studied in further analyses.

**Results:** Patients with SBBC developed breast cancer at an older age and had a higher rate of ER positivity than patients with UBC ( $p < 0.001$ , separately). In contrast, 14.1% of SBBC patients had carcinomas with a lobular component in either breast based on pathological reports ( $p < 0.001$ ). Twelve patients had BRCA1 mutations, and 14 patients had BRCA2 mutations, while no patients had mutations in both genes. The BRCA1/2 mutation rate was higher in younger patients (23.4 vs. 11.1%,  $p = 0.036$ ). SBBC patients with a family history of breast cancer or bilateral ER-negative disease had a higher frequency of BRCA1/2 mutations than the cohort without a history of these conditions. SBBC with a bilateral ER-discordant status had a very low frequency of BRCA1/2 mutations (5.6%). Patients with an ER-positive (concordant or discordant) status had better 3-year disease-free survival than patients with a concordant ER-negative status (HR = 0.324, 95% CI: 0.126–0.837,  $P = 0.020$ ). However, the outcomes were similar during long-term follow-up. Pathological lymph node stage was the only prognostic factor for SBBC in both univariate and multivariate Cox analyses.

**Conclusions:** Our study shows that Chinese women with SBBC have different characteristics from their UBC counterparts. SBBC patients with a younger age, family

history of breast cancer, or bilateral ER-negative disease are more likely to have BRCA1/2 mutations. SBBC patients with a concordant ER-negative status had worse early outcomes. Our results suggest that there may be additional factors underlying the tumor biology and genetics of SBBC.

**Keywords:** BRCA1/2 mutation, hormone receptor status, synchronous bilateral breast cancer, concordance, DFS

## INTRODUCTION

Because of the increase in breast cancer incidence rates, improvements in early diagnosis, and development of novel treatments, there is a trend of increasing occurrence for bilateral primary breast cancer. In previous reports, the incidence rate of bilateral breast cancer has ranged from 2 to 11% (1–3). Breast cancer patients are at a two to six times increased risk of developing contralateral breast tumors compared with the general population (4). Other factors for bilateral breast cancer, including family history, early age of diagnosis, lobular histology, treatment type received for the primary tumor and nulliparity, all contribute to this increased risk (1, 5–7). Most metachronous tumors are diagnosed during long-term follow-up. Synchronous tumors are less frequent, although their incidence may be increasing with modern imaging techniques. Synchronous and metachronous bilateral invasive breast cancers have different characteristics and outcomes (8).

BRCA1 and BRCA2 are located on 17q21 and 13q12, respectively. A large number of previous studies have reported BRCA1/2 as the most important tumor suppressor gene associated with breast cancer and ovarian cancer. Women with breast cancer and a BRCA mutation have a high risk of developing contralateral breast cancer. The histopathologic characteristics and the biologic behavior of SBBCs are still unclear. The relationship between hormone receptor status and BRCA1/2 mutation is also unclear. In addition, whether hormone receptor status and BRCA1/2 mutation predict worse clinical outcomes among SBBC patients remains to be determined. The aims of this study were to determine the concordance rate between hormone receptor status and BRCA1/2 mutations in women with SBBC and to identify clinical, pathologic features, and genetic predictive factors in this population.

## METHODS

### Study Population

The study cohort in the present study was selected consecutively from patients who were diagnosed and treated at the Fudan University Cancer Center from 2007 to 2014. Data were gathered from patient medical records and included information from clinical, imaging, and pathology studies. Those who had bilateral breast surgery were identified as *in situ* or invasive carcinoma in bilateral breasts diagnosed within 12 months. Patient demographics and tumor variables were obtained from medical records and the hospital's electronic database. The variables analyzed included age, year of diagnosis, age at menarche, family history, BMI, number of pregnancies, and

pathological features. Patients who were diagnosed with female unilateral breast cancer (UBC) during the same time period served as the control group.

### BRCA1/2 Testing

One hundred and sixty-three SBBC patients were tested for BRCA1/2 germline mutations. All coding regions and exon-intron boundaries of the BRCA1/2 genes were screened. The intronic sequence length was 70 bp on average (ranging from 5 to 204 bp). The detailed procedures of NGS and interpretation of the mutations are described in a previous article published by our institution (9). Those genetic variants that were defined as pathogenic/likely pathogenic were selected for further analysis. However, the present study did not include large genomic rearrangements (LGRs) in BRCA1/2. Sanger sequencing was used for all mutations considered to be disease associated. The sequencing results were compared with the BRCA1 (NM\_007294.3) and BRCA2 (NM\_000059.3) reference sequences for variant detection. The study was conducted according to the principles expressed in the Declaration of Helsinki and was approved by the institutional review board of Fudan University Shanghai Cancer Center. All patients enrolled in this study voluntarily provided written informed consent.

### Statistics

Fisher's exact test and chi-square tests were used to evaluate differences in the clinicopathological characteristics, such as BRCA1/2 mutation frequency across groups and ER status. Univariate and multivariate survival analysis was performed using the Cox proportional hazards models. Disease-free survival (DFS) was calculated from the date of first diagnosis to the date of disease relapse or metastasis. Overall survival (OS) was calculated from the date of first diagnosis to the date of death or last follow-up. All analyses were performed using SPSS software version 19.0 (IBM Institute, Chicago, IL, USA). All *P*-values were two-sided, and *P* < 0.05 was considered statistically significant.

## RESULTS

### Differences in the Clinicopathological Characteristics of Patients With SBBC and UBC

A total of 15,337 patients with primary breast cancer underwent surgery at the Fudan University Shanghai Cancer Center between 2007 and 2014. One hundred and sixty-three SBBC patients with germline BRCA1/2 testing and integral clinicopathological information in the same period was included. Patients treated for metachronous bilateral breast cancer (MBBC), male patients and

**TABLE 1** | Demographics and clinicopathological characteristics of SBBC and UBC patients.

Variables	SBBC (n = 163)	UBC (n = 13,832)	
Age (median, range)	54 (26–84)	51 (18–98)	$P < 0.001$
Family history	19 (11.7%)	1,333 (9.6%)	$P = 0.386$
<b>Histopathology</b>			
No lobular component	140 (85.9%)	13,615 (98.4%)	$P < 0.001$
Lobular component	23 (14.1%)	217 (1.6%)	
<b>Stage</b>			
0/I	66 (40.5%)	5,451 (39.4%)	$P = 0.779$
II/III	97 (59.5%)	8,381 (60.6%)	
Type of surgery			$P < 0.001$
Mastectomy	150 (92.0%)	12,018 (78.4%)	
Breast-conserving surgery or breast reconstruction	13 (8.0%)	3,319 (21.6%)	
ER positivity	142 (87.1%)	6,384/8,629 (74.0%)	$P < 0.001$
HER-2-positive invasive carcinoma	31 (19.0%)	1,960/9,410 (20.8%)	$P = 0.599$

SBBC, synchronous bilateral breast cancer; UBC, unilateral breast cancer; ER, estrogen receptor.

stage IV patients who underwent palliative operations during the same time period were excluded from the study. Locally advanced patients, such as those with stage IIb or IIc disease, were excluded from the present study to avoid the risk of misclassifying metastatic bilateral breast cancer.

As shown in **Table 1**, patients with SBBC developed malignant carcinoma at an older age than patients with UBC (median age: 54 vs. 51 years,  $P < 0.001$ ). Compared with the 9.6% of UBC patients who had a family history of breast cancer, 11.7% of patients with SBBC had a similar family history within first-degree relatives. In contrast, 14.1% of SBBC patients had carcinomas with a lobular component in either breast based on pathological reports ( $P < 0.001$ ). There was no significant difference in TNM stage distribution. However, SBBC patients tended to have received bilateral mastectomy, and only 8.0% of SBBC patients chose breast-conserving surgery or breast reconstruction compared with 24% of UBC patients ( $P < 0.001$ ). ER-positive carcinoma was more often found in SBBC patients than in UBC patients (87.1 vs. 74.0%,  $P < 0.001$ ), and HER2 status was similar in both groups.

## BRCA1/2 Mutation Status in Patients With Synchronous Bilateral Breast Cancer

A total of 163 SBBC patients underwent germline testing for BRCA1/2 mutation after surgery. Twenty-six patients had pathogenic/likely pathogenic mutations in either BRCA1 or BRCA2. Out of 64 early-onset (<50 years) SBBC patients, 15 BRCA1/2 mutation carriers were identified. The BRCA1/2 mutation rate was higher in younger patients (23.4 vs. 11.1%,  $P = 0.036$ ). Seven carriers were found among 18 patients with a family history of breast cancer, which was significantly more frequent than the incidence in the cohort without a family history of breast cancer (38.9 vs. 11.3%,  $P = 0.005$ ). SBBC patients

had a higher incidence of lobular carcinoma than UBC patients, while there was no relationship between lobular carcinoma and BRCA1/2 mutation, as shown in **Table 2**. No significant relationship was observed between pathological T/N stage and BRCA1/2 mutation.

Twelve patients had BRCA1 mutations, and 14 patients had BRCA2 mutations, while no patients had mutations in both genes. In bilateral ER-negative patients with a family history of breast cancer, the BRCA1 mutation rate was nearly 60%. All patients with BRCA2 mutations had ER positivity on one or both sides, while 41.7% of BRCA1 mutation carriers had ER-positive disease. BRCA1 mutation was closely associated with the occurrence of ER-negative breast cancer ( $P = 0.001$ ). DCIS with/without invasive cancer had no relationship with BRCA1/2 mutation or concordance ER status.

## Evaluation of Possible Clinical and Pathological Risk Factors for SBBC

When patients were divided into bilateral ER-positive, bilateral ER-negative and bilateral ER-discordant disease subgroups, the BRCA1/2 mutation was highest in the bilateral ER-negative subgroup (33%,  $P = 0.022$ ). Synchronous bilateral breast cancer patients with bilateral ER inconsistency had a very low frequency of BRCA1/2 mutations (5.6%). Patients with a high BMI (BMI  $\geq 24$ ) were more likely to have the luminal type of bilateral breast cancer ( $P = 0.005$ ). Follow-up data were available for all 163 invasive breast cancer patients in our cohort. The median follow-up was 56.1 months (range: 21.0–139.8 months). No significant differences were observed in disease-free survival (DFS) between the BRCA1/2 carriers and non-carriers [hazard ratio (HR) = 1.068, 95% confidence interval (CI): 0.409–2.790,  $P = 0.894$ ], BRCA1 carriers and non-carriers (HR = 1.506, 95% CI: 0.457–4.967,  $P = 0.501$ ), or BRCA2 carriers and non-carriers (HR = 0.730, 95% CI: 0.174–3.067,  $P = 0.668$ ). There was also no significant difference in overall survival (OS) between BRCA1/2 carriers and non-carriers [hazard ratio (HR) = 1.229, 95% confidence interval (CI): 0.264–5.727,  $P = 0.793$ ].

No significant difference was observed in relation to other clinical and pathological factors (age at menarche, menopause status, age, family history, pathological tumor stage, BMI, number of pregnancies, lobular carcinoma, bilateral ER consistency, ER status, and LVI). Patients with an ER-positive (concordant or discordant) status had better 3-year disease-free survival than patients with a concordant ER-negative status (HR = 0.324, 95% CI: 0.126–0.837,  $P = 0.020$ ). However, this difference disappeared during long-term follow-up. Concordance and discordance of HER2 status was no relationship with BRCA1/2 mutations and survival. Pathological lymph node stage was the only prognostic factor for synchronous bilateral breast cancer in both univariate and multivariate Cox analyses ( $P = 0.001$  and  $P = 0.01$ ), as shown in **Table 3**. SBBC patients were divided into pure bilateral carcinoma *in situ*, unilateral invasive carcinoma and bilateral invasive carcinoma groups. The bilateral invasive carcinoma patients had the worst DFS, which was showed in **Figure 1** ( $P = 0.026$ ). There was no difference in OS analysis.

**TABLE 2** | Comparison of clinicopathological characteristics between BRCA1/2 status and ER IHC status.

Category		BRCA1/2 status			ER IHC status		
		Wild type (n = 137)	Mutation status (n = 26)	P-value	Bilateral concordant (n = 127)	Bilateral discordant (n = 36)	P-value
Age at menarche	≤14 years	60	13	0.56	57	16	0.963
	>14 years	77	13		70	20	
Menopause status	Premenopausal	50	12	0.352	52	10	0.151
	Menopausal	87	14		75	26	
Age	≤50 years	49	15	0.036	56	8	0.018
	>50 years	88	11		71	28	
Family history	Breast cancer	11	7	0.005	14	4	0.988
	No history	126	16		113	32	
pT	pTis/pT1	54	12	0.521	52	14	0.824
	pT2/pT3	83	14		75	22	
BMI	<24	91	18	0.78	92	17	0.005
	≥24	46	8		35	19	
Number of pregnancies	≤2 times	77	11	0.192	65	23	0.177
	>2 times	60	15		62	13	
pN	LN-negative	98	14	0.075	89	23	0.48
	LN-positive	39	12		38	13	
Histopathology	Lobular component	21	2	0.537	19	4	0.558
	No lobular component	116	24		108	32	
Invasive component	Bilateral invasive carcinoma	78	17	0.652	73	22	0.909
	Unilateral invasive carcinoma	44	6		40	10	
	Bilateral carcinoma <i>in situ</i>	15	3		14	4	
ER status	Bilateral positive	89	17	0.022	–	–	
	Bilateral discordant	34	2		–	–	
	Bilateral negative	14	7		–	–	
BRCA1/2 status	Wide type	–	–		103	34	0.07
	Mutation type	–	–		24	2	

pT, pathological tumor stage; pN, pathological lymphnode stage; BMI, Body Mass Index.

## DISCUSSION

The incidence of synchronous bilateral invasive breast cancer ranges from 0.3 to 3.0%. Differing definitions have been used for a diagnosis of synchronous disease, with cut-offs ranging from within 3 to 12 months of initial diagnosis (10, 11). Some previous studies have determined that the age at diagnosis of the initial tumor is an important predictor for contralateral breast cancer. In our study, the average age at diagnosis of SBBC was 54 years old, which was significantly older than the age (51 years) observed for UBC. However, Chinese SBBC patients were still younger than Caucasian patients (12). A previous study also showed that the survival rate in patients with bilateral breast cancer is significantly lower than the survival rate in patients with UBC (13, 14). However, a small study also reported that there were no significant differences in disease-specific survival between SBBC patients and UBC controls (12). Due to the lower incidence and variable definitions of SBBC, the survival rates differ. In previous research, incidence and outcome were markedly different between MBBC and SBBC. SBBC, compared to MBBC and UBC, had a significantly higher

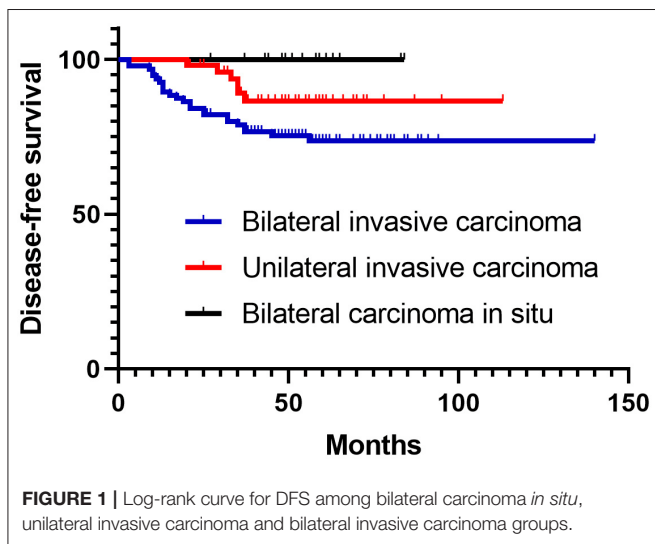
distant metastasis rate. SBBC also had worse disease-specific survival and OS than MBBC (8). Lobular histology, family history and BRCA mutations have been associated with an increased incidence of bilateral presentation (15). Our study described the clinicopathologic features of SBBC in a large cohort of patients consecutively treated in a single institution and compared these characteristics with those of a large cohort of patients with unilateral invasive breast carcinoma treated during the same time period. As we confirmed in our study, SBBC patients were older than UBC patients and showed a higher incidence of lobular carcinoma, a higher rate of ER-positive status and a higher rate of mastectomy. Bilateral tumors may have different pathological features. The concordance between MBBC for ER status was much greater than expected for BRCA1/2 mutation (16). Several studies in predominantly symptomatic patients found that BBCs show more favorable tumor characteristics than unilateral cancers, with a higher proportion of invasive lobular cancer, a lower T stage and a higher proportion of hormone receptor positivity (12, 17).

BRCA1/2 mutations are associated with a high risk of developing contralateral breast cancer by the age of 70 years



**TABLE 3** | Univariate and multivariate survival analyses of SBBC patients.

Category		Univariate Cox analysis (DFS)		Multivariate Cox analysis (DFS)	
		Hazard ratio (95% CI)	P-value	Hazard ratio (95% CI)	P-value
Age at menarche	≤14 years vs. >14 years	1.696 (0.823–3.491)	0.152	–	–
Menopause status	Premenopausal vs. menopausal	1.282 (0.623–2.641)	0.5	–	–
Age	≤50 years vs. >50 years	0.832 (0.404–1.715)	0.619	0.887 (0.391–2.010)	0.774
Family history	Breast cancer vs. no history	0.556 (0.212–1.454)	0.231	–	–
pT	pTis/pT1 vs. pT2/3	1.966 (0.875–4.416)	0.102	1.027 (0.431–2.448)	0.952
BMI	<24 vs. ≥24	1.236 (0.588–2.600)	0.576	–	–
Number of pregnancies	≤2 times vs. >2 times	1.758 (0.823–3.757)	0.145	–	–
pN	LN-negative vs. LN-positive	0.291 (0.141–0.599)	0.001	0.361 (0.166–0.787)	0.01
Histopathology	Lobular component vs. no lobular component	0.730 (0.279–1.907)	0.521	0.746 (0.252–2.203)	0.595
Bilateral ER consistency	Bilateral concordant vs. bilateral discordant	0.951 (0.409–2.217)	0.907	–	–
ER status	Positive vs. negative	0.506 (0.207–1.240)	0.136	0.473 (0.167–1.338)	0.158
HER2 status	Positive vs. negative	0.614 (0.263–1.430)	0.258	0.531 (0.208–1.357)	0.186
BRCA1/2 status	Wild type vs. mutated	1.068 (0.409–2.790)	0.894	0.585 (0.431–2.448)	0.355
LVI	Positive vs. negative	0.664 (0.304–1.450)	0.304	–	–
ER status for 3y DFS	Positive vs. negative	0.324 (0.126–0.837)	0.020	0.179 (0.050–0.644)	0.008



(18–21). One study found that the incidence of contralateral breast cancer was four to five times higher than that of sporadic breast cancer in BRCA gene mutation carriers, while another study found that the frequencies of BRCA mutations between bilateral and unilateral breast cancer were not different (22, 23). The prevalence of BRCA mutations in Asian bilateral breast cancer ranges from 6 to 16% (23, 24). Some studies have reported a significant correlation between family history and SBBC; however, this has not been confirmed by others (25). Interactions between genetic and hormonal environmental factors play a crucial role in the development of both unilateral and bilateral breast cancer. The most important genetic factors are BRCA1 and BRCA2. In our SBBC patients, bilateral ER-negative status, young age and a family history of breast cancer were associated with a high risk of BRCA1/2 mutation.

Tumor heterogeneity is becoming important in the management of breast cancer. In the neoadjuvant setting, a positive-to-negative change in hormone receptor status was

an independent survival predictor (26). A worse prognosis was also found to be associated with a discordant receptor status between the metastatic site and the primary breast cancer (27). SBBC has been shown to have a high rate (77–88%) of concordant ER positivity (12, 28, 29). Phenotypically synchronous tumors have been shown to have a greater degree of concordance than phenotypically metachronous tumors (30). The rate of discordant ER expression between primary and secondary cancer has been shown to be as high as 29–37% in MBBC (29, 31). Some researchers have suggested that MBBC may have different genetic signatures and origins. Some oncologists retrospectively analyzed the heterogeneity of molecular markers in multifocal/multicentric breast cancer, leading to changes in adjuvant treatment in 12% of cases (32). Even in estrogen receptor-positive, HER2-negative, node-negative, synchronous bilateral invasive breast cancer, Oncotype DX risk group was discordant in 33% of women, which led to a change in treatment in 57% of these patients (33).

A meta-analysis including 8,050 patients with SBBC, defined as a contralateral diagnosis within 6 months, reported a worse prognosis for women with SBBC than that for patients with unilateral disease (34). The idea that patients with SBBC have a worse prognosis was widely adopted according to the concept that patients with tumors with worse prognostic factors need more extensive surgical treatment (35, 36). Based on SEER data, oncologists found that heterogeneity in hormone receptor status could be used to predict the overall survival and breast cancer-specific survival in the first 5 years. The ER status had a better prognostic value than the PR status (31). The hormone receptor statuses of both tumors were recorded in this study to explore the relationship between outcome and receptor variation. Our findings support the need to evaluate bilateral hormone receptor expression. In our research, we found that bilateral ER-negative patients have higher instances of short-term recurrence and metastasis, especially in the first 3 years. The bilateral ER-positive or

ER-discordant patients in our cohort also had similar outcomes. In a previous report featuring Caucasian patients, there was no statistically significant difference between the different ER expression groups in either OS or BCSS after 5 years of follow-up (32).

A potential limitation of our study might be the small number of women with SBBC included. Our study also has limitations because of its retrospective character. Furthermore, patients received different chemotherapy regimens. The survival difference between ER bilateral negative and ER-positive patients in short follow-up may be statistical significance is due to chance. The strengths of our study include (1) the large population-based cohort, (2) the thoroughness, long follow-up and BRCA1/2 mutation testing, (3) uniformity in treatment location, and (4) uniformity in the pathology laboratory used. Future randomized studies with larger prospective cohorts and longer-term follow-up are needed to validate these findings.

## DATA AVAILABILITY STATEMENT

The raw data supporting the conclusions of this article will be made available by the authors, without undue reservation, to any qualified researcher.

## REFERENCES

- Chen Y, Thompson W, Semenciw R, Mao Y. Epidemiology of contralateral breast cancer. *Cancer Epidemiol Biomarkers Prev.* (1999) 8:855–61.
- Beinart G, Gonzalez-Angulo AM, Broglio K, Mejia J, Ruggeri A, Mininberg E, et al. Clinical course of 771 patients with bilateral breast cancer: characteristics associated with overall and recurrence-free survival. *Clin Breast Cancer.* (2007) 7:867–74. doi: 10.3816/CBC.2007.n.052
- Kheirelseid EA, Jumustafa H, Miller N, Curran C, Sweeney K, Malone C, et al. Bilateral breast cancer: analysis of incidence, outcome, survival and disease characteristics. *Breast Cancer Res Treat.* (2011) 126:131–40. doi: 10.1007/s10549-010-1057-y
- Chaudary MA, Millis RR, Hoskins EO, Halder M, Bulbrook RD, Cuzick J, et al. Bilateral primary breast cancer: a prospective study of disease incidence. *Br J Surg.* (1984) 71:711–4. doi: 10.1002/bjs.1800710924
- Heron DE, Komarnicky LT, Hyslop T, Schwartz GF, Mansfield CM. Bilateral breast carcinoma: risk factors and outcomes for patients with synchronous and metachronous disease. *Cancer.* (2000) 88:2739–50. doi: 10.1002/1097-0142(20000615)88:12<2739::AID-CNCR12>3.0.CO;2-J
- Newman LA, Sahin AA, Cunningham JE, Bondy ML, Mirza NQ, Vlastos GS, et al. A case-control study of unilateral and bilateral breast carcinoma patients. *Cancer.* (2001) 91:1845–53. doi: 10.1002/1097-0142(20010515)91:10<1845::AID-CNCR1205>3.0.CO;2-Z
- Mertens WC, Hilbert V, Makari-Judson G. Contralateral breast cancer: factors associated with stage and size at presentation. *Breast J.* (2004) 10:304–12. doi: 10.1111/j.1075-122X.2004.21333.x
- Jobsen JJ, van der Palen J, Ong F, Riemersma S, Struikmans H. Bilateral breast cancer, synchronous and metachronous; differences and outcome. *Breast Cancer Res Treat.* (2015) 153:277–83. doi: 10.1007/s10549-015-3538-5
- Lang GT, Shi JX, Hu X, Zhang CH, Shan L, Song CG, et al. The spectrum of BRCA mutations and characteristics of BRCA-associated breast cancers in China: screening of 2,991 patients and 1,043 controls by next-generation sequencing. *Int J Cancer.* (2017) 141:129–42. doi: 10.1002/ijc.30692
- Gollamudi SV, Gelman RS, Peiro G, Schneider LJ, Schnitt SJ, Recht A, et al. Breast-conserving therapy for stage I-II synchronous bilateral breast carcinoma. *Cancer.* (1997) 79:1362–9. doi: 10.1002/(SICI)1097-0142(19970401)79:7<1362::AID-CNCR14>3.0.CO;2-Y
- Kollias J, Ellis IO, Elston CW, Blamey RW. Clinical and histological predictors of contralateral breast cancer. *Eur J Surg Oncol.* (1999) 25:584–9. doi: 10.1053/ejso.1999.0711
- Schmid SM, Pfefferkorn C, Myrick ME, Viehl CT, Obermann E, Schotzau A, et al. Prognosis of early-stage synchronous bilateral invasive breast cancer. *Eur J Surg Oncol.* (2011) 37:623–8. doi: 10.1016/j.ejso.2011.05.006
- Sarveazad A, Babahajian A, Shamseddin J, Bahardoust M. 5-year survival rates and prognostic factors in patients with synchronous and metachronous breast cancer from 2010 to 2015. *Asian Pac J Cancer Prev.* (2018) 19:3489–93. doi: 10.31557/APJCP.2018.19.12.3489
- Vuoto HD, Garcia AM, Candas GB, Zimmermann AG, Uriburu JL, Isetta JA, et al. Bilateral breast carcinoma: clinical characteristics and its impact on survival. *Breast J.* (2010) 16:625–32. doi: 10.1111/j.1524-4741.2010.00976.x
- Hartman M, Czene K, Reilly M, Adolfsson J, Bergh J, Adami HO, et al. Incidence and prognosis of synchronous and metachronous bilateral breast cancer. *J Clin Oncol.* (2007) 25:4210–6. doi: 10.1200/JCO.2006.10.5056
- Weitzel JN, Robson M, Pasini B, Manoukian S, Stoppa-Lyonnet D, Lynch HT, et al. A comparison of bilateral breast cancers in BRCA carriers. *Cancer Epidemiol Biomarkers Prev.* (2005) 14:1534–8. doi: 10.1158/1055-9965.EPI-05-0070
- Setz-Pels W, Duijm LE, Groenewoud JH, Louwman MW, Jansen FH, van Beek M, et al. Patient and tumor characteristics of bilateral breast cancer at screening mammography in the Netherlands, a population-based study. *Breast Cancer Res Treat.* (2011) 129:955–61. doi: 10.1007/s10549-011-1545-8
- Nicoletto MO, Donach M, De Nicolo A, Artioli G, Banna G, Monfardini S. BRCA-1 and BRCA-2 mutations as prognostic factors in clinical practice and genetic counselling. *Cancer Treat Rev.* (2001) 27:295–304. doi: 10.1053/ctrv.2001.0233
- Ford D, Easton DF, Bishop DT, Narod SA, Goldgar DE. Risks of cancer in BRCA1-mutation carriers. Breast Cancer Linkage Consortium. *Lancet.* (1994) 343:692–5. doi: 10.1016/S0140-6736(94)91578-4
- Verhoog LC, Brekelmans CT, Seynaeve C, Meijers-Heijboer EJ, Klijn JG. Contralateral breast cancer risk is influenced by the age at onset

## ETHICS STATEMENT

The studies involving human participants were reviewed and approved by the study was conducted according to the principles expressed in the Declaration of Helsinki and was approved by the institutional review board of Fudan University Shanghai Cancer Center. The patients/participants provided their written informed consent to participate in this study.

## AUTHOR CONTRIBUTIONS

LH and A-YC conceived and designed the study. Z-MS provided these clinical cases. LH and QL sorted and analyzed the clinicopathological data. LH and G-TL prepared the tables. A-YC wrote the main manuscript.

## FUNDING

This research was supported by the National Natural Science Foundation of China (81502289), the Shanghai Natural Science Foundation (19ZR1411100), and Shanghai Health Commission Foundation (201940167 and 20194Y0080). The funders had no role in the study design, data collection and analysis, decision to publish, or preparation of the manuscript.

- in BRCA1-associated breast cancer. *Br J Cancer*. (2000) 83:384–6. doi: 10.1054/bjoc.2000.1239
21. Ford D, Easton DF, Stratton M, Narod S, Goldgar D, Devilee P, et al. Genetic heterogeneity and penetrance analysis of the BRCA1 and BRCA2 genes in breast cancer families. The Breast Cancer Linkage Consortium. *Am J Hum Genet*. (1998) 62:676–89.
  22. Verhoog LC, Brekelmans CT, Seynaeve C, van den Bosch LM, Dahmen G, van Geel AN, et al. Survival and tumour characteristics of breast-cancer patients with germline mutations of BRCA1. *Lancet*. (1998) 351:316–21. doi: 10.1016/S0140-6736(97)07065-7
  23. Steinmann D, Bremer M, Rades D, Skawran B, Siebrands C, Karstens JH, et al. Mutations of the BRCA1 and BRCA2 genes in patients with bilateral breast cancer. *Br J Cancer*. (2001) 85:850–8. doi: 10.1054/bjoc.2001.2016
  24. Kang E, Seong MW, Park SK, Lee JW, Lee J, Kim LS, et al. The prevalence and spectrum of BRCA1 and BRCA2 mutations in Korean population: recent update of the Korean Hereditary Breast Cancer (KOHBRA) study. *Breast Cancer Res Treat*. (2015) 151:157–68. doi: 10.1007/s10549-015-3377-4
  25. Kollias J, Ellis IO, Elston CW, Blamey RW. Prognostic significance of synchronous and metachronous bilateral breast cancer. *World J Surg*. (2001) 25:1117–24. doi: 10.1007/BF03215857
  26. Chen S, Chen CM, Yu KD, Zhou RJ, Shao ZM. Prognostic value of a positive-to-negative change in hormone receptor status after neoadjuvant chemotherapy in patients with hormone receptor-positive breast cancer. *Ann Surg Oncol*. (2012) 19:3002–11. doi: 10.1245/s10434-012-2318-2
  27. Liedtke C, Broglio K, Moulder S, Hsu L, Kau SW, Symmans WF, et al. Prognostic impact of discordance between triple-receptor measurements in primary and recurrent breast cancer. *Ann Oncol*. (2009) 20:1953–8. doi: 10.1093/annonc/mdp263
  28. Intra M, Rotmensz N, Viale G, Mariani L, Bonanni B, Mastropasqua MG, et al. Clinicopathologic characteristics of 143 patients with synchronous bilateral invasive breast carcinomas treated in a single institution. *Cancer*. (2004) 101:905–12. doi: 10.1002/cncr.20452
  29. Liang X, Li D, Geng W, Cao X, Xiao C. The prognosis of synchronous and metachronous bilateral breast cancer in Chinese patients. *Tumour Biol*. (2013) 34:995–1004. doi: 10.1007/s13277-012-0636-4
  30. Kollias J, Pinder SE, Denley HE, Ellis IO, Wencyk P, Bell JA, et al. Phenotypic similarities in bilateral breast cancer. *Breast Cancer Res Treat*. (2004) 85:255–61. doi: 10.1023/B:BREA.0000025421.00599.b7
  31. Baretta Z, Olopade OI, Huo D. Heterogeneity in hormone-receptor status and survival outcomes among women with synchronous and metachronous bilateral breast cancers. *Breast*. (2015) 24:131–6. doi: 10.1016/j.breast.2014.12.001
  32. Buggi F, Folli S, Curcio A, Casadei-Giunchi D, Rocca A, Pietri E, et al. Multicentric/multifocal breast cancer with a single histotype: is the biological characterization of all individual foci justified? *Ann Oncol*. (2012) 23:2042–6. doi: 10.1093/annonc/mdr570
  33. Karsten M, Stempel M, Radosa J, Patil S, King TA. Oncotype DX in bilateral synchronous primary invasive breast cancer. *Ann Surg Oncol*. (2016) 23:471–6. doi: 10.1245/s10434-015-4841-4
  34. Holm M, Tjonneland A, Balslev E, Kroman N. Prognosis of synchronous bilateral breast cancer: a review and meta-analysis of observational studies. *Breast Cancer Res Treat*. (2014) 146:461–75. doi: 10.1007/s10549-014-3045-0
  35. Heaton KM, Peoples GE, Singletary SE, Feig BW, Ross MI, Ames FC, et al. Feasibility of breast conservation therapy in metachronous or synchronous bilateral breast cancer. *Ann Surg Oncol*. (1999) 6:102–8. doi: 10.1007/s10434-999-0102-8
  36. Chen JJ, Huang NS, Xue JY, Quan CL, Tan YL, Liu GY, et al. Surgical management for early-stage bilateral breast cancer patients in China. *PLoS ONE*. (2015) 10:e0122692. doi: 10.1371/journal.pone.0122692

**Conflict of Interest:** The authors declare that the research was conducted in the absence of any commercial or financial relationships that could be construed as a potential conflict of interest.

Copyright © 2020 Huang, Liu, Lang, Cao and Shao. This is an open-access article distributed under the terms of the Creative Commons Attribution License (CC BY). The use, distribution or reproduction in other forums is permitted, provided the original author(s) and the copyright owner(s) are credited and that the original publication in this journal is cited, in accordance with accepted academic practice. No use, distribution or reproduction is permitted which does not comply with these terms.