



# RETRACTED: Elevated Expression Levels of PC3-Secreted Microprotein (PSMP) in Prostate Cancer Associated With Increased Xenograft Growth and Modification of Immune-Related Microenvironment

Xiaolei Pei<sup>1†</sup>, Danfeng Zheng<sup>2†</sup>, Shaoping She<sup>3</sup>, Zhiwei Fang<sup>4</sup>, Shiyong Zhang<sup>4</sup>, Hao Hu<sup>4</sup>, Kexin Xu<sup>4</sup> and Ying Wang<sup>3\*</sup>

## OPEN ACCESS

### Edited by:

Kuzhuvellil B. Harikumar,  
Rajiv Gandhi Centre for Biotechnology,  
India

### Reviewed by:

Vijay Pandey,  
Tsinghua-Berkeley Shenzhen  
Institute, China  
Kamini Singh,  
Memorial Sloan Kettering Cancer  
Center, United States

### \*Correspondence:

Ying Wang  
w@bjmu.edu.cn

†These authors have contributed  
equally to this work

### Specialty section:

This article was submitted to  
Cancer Molecular Targets and  
Therapeutics,  
a section of the journal  
Frontiers in Oncology

Received: 10 April 2019

Accepted: 22 July 2019

Published: 28 August 2019

### Citation:

Pei X, Zheng D, She S, Fang Z,  
Zhang S, Hu H, Xu K and Wang Y  
(2019) Elevated Expression Levels of  
PC3-Secreted Microprotein (PSMP) in  
Prostate Cancer Associated With  
Increased Xenograft Growth and  
Modification of Immune-Related  
Microenvironment.  
Front. Oncol. 9:724.  
doi: 10.3389/fonc.2019.00724

<sup>1</sup> Institute of Hematology and Blood Diseases Hospital, Chinese Academy of Medical Sciences, Peking Union Medical College, Tianjin, China, <sup>2</sup> Department of Laboratory Medicine, Center of Clinical Laboratory, School of Medicine, The First Affiliated Hospital, Zhejiang University, Hangzhou, China, <sup>3</sup> Key Laboratory of Medical Immunology, Ministry of Health, Department of Immunology, School of Basic Medical Sciences, Peking University Health Science Center, Beijing, China, <sup>4</sup> Department of Urology, Peking University People's Hospital, Beijing, China

Prostate cancer (PCa), especially metastatic PCa, is one of the main cancer types accounting for male mortality worldwide. Over decades, researchers have tried to search for effective curative methods for PCa, but many attempts have failed. The therapeutic failure of PCa is usually due to off-target or side effects; thus, finding a key molecule that could prevent PCa metastatic progression has become the most important goal for curing aggressive PCa. In this study, we collected hundreds of PCa tissues and serum and urine samples from patients to verify the upregulated expression of PC3-secreted microprotein (PSMP) in PCa tumor tissues with high Gleason scores. According to biopsy results, PSMP expression was found related to extraprostatic extension (EPE), contributing to PCa metastasis. Mechanistically, recombinant PSMP protein could promote the proliferation both *in vitro* and *in vivo*, and rhPSMP could promote epithelial-mesenchymal transition (EMT) of PC3 *in vitro*. Additionally, PSMP could also influence cytokine production in the xenograft model and monocyte migration and macrophage polarization *in vitro*. Our most important finding was that neutralizing antibodies against PSMP could suppress xenograft PC3 growth and promote the survival of PC3 metastatic mice model, providing an effective option to cure human PCa.

**Keywords:** PC3-secreted microprotein, prostate cancer, therapeutic target, neutralizing antibody, microenvironment

## INTRODUCTION

Prostate cancer (PCa) is one of the main lethal cancer types in males worldwide. Primary PCa usually grows very slowly, and lymph nodes, bone marrow, and brain are the main targets of metastasis. Disease stages, serum prostate-specific antigen (PSA) levels, and Gleason scores are the main references for treatment. PCa without metastasis has a low risk and usually treated

with a conservative treatment (1), because primary PCa spreads very slowly in a limited area. However, aggressive PCa is still difficult to treat (2). Accompanied with metastasis, high Gleason scores, low free/total PSA levels, and extraprostatic extension (EPE) plus positive margins are reported to define aggressive PCa. Specially for EPE, it is defined as the local spread of PCa beyond prostate boundaries. Many reports about EPE and PCa risk have revealed that EPE is strongly correlated with other aggressive disease features. Patients with Gleason score of 7 compared with EPE and positive margins have a high enough risk that they should be unequivocally considered for adjuvant treatment (3). EPE can also independently influence biochemical recurrence-free survival in cases under pT3 subclassification (4). PCa metastasis can eventually lead to patient death. Unlike patients with low-risk PCa, patients with aggressive PCa are usually recommended to receive multiple treatments, such as surgery, radiation therapy, high-intensity focused ultrasound therapy, chemotherapy, and hormonal therapy (5, 6). To solve the difficulty in treating aggressive PCa, several immunotherapies, including cancer vaccines (7) and neutralizing antibodies (8), have already been developed.

PC3-secreted microprotein (PSMP), also known as MSMP, was first reported to function as a chemokine secreted by the PC3 cell line, and its chemokine receptor was identified to be CCR2 by the Ying Wang lab (9). PSMP is a classic secreted protein with secreting signal peptides and CC and CXC motifs. PSMP has already been proven to be a chemokine acting as a chemoattractant for monocytes with chemokine receptors in a CCR2-dependent manner both *in vitro* and *in vivo* (9, 10). In another study, PSMP was found to be expressed in multiple tumor-associated tissues, including lung adenocarcinoma, kidney cancer, PCa, pancreatic cancer, stomach cancer, colon cancer, and breast cancer, but not by the immune system (9, 11). However, the function of PSMP in cancer remains unclear. In our previous study, we found PSMP expression in benign prostate hyperplastic tissues to be slightly higher than that in cancer tissues, but the effect of PSMP on PCa cells remained unexplored (9). The results from Sood's team revealed that upregulated expression of PSMP in ovarian cancer was associated with resistance to antiangiogenesis therapy, whose function also relied on CCR2 (12). Another study from our lab, which has not been published yet, showed that tumorigenesis in the mouse colon induced by azoxymethane (AOM)/dextran sodium sulfate (DSS) was dramatically ameliorated by blocking PSMP. There is accumulating evidence indicating the participation of PSMP in tumorigenesis. Even though PSMP was first found to be expressed by PC3 cells and PCa tissues, some of the important functions of PSMP in PCa tumorigenesis and metastasis are still unclear. In this study, we first collected many biopsy tissues from benign prostate hyperplasia (BPH) or PCa patients and then determined the relationship between PSMP expression level and PCa. We hypothesized that PSMP is an important secreted protein that has an impact on prostate tumor formation, metastasis, and microenvironment through its receptor CCR2, expressed on PCa cells and immune cells. Therefore, in this study, the direct and specific functions of PSMP in PCa were examined both *in vitro* and *in vivo*.

## MATERIALS AND METHODS

### PCa Biopsy Sample Collection

PCa biopsy samples were obtained from the 2010 to 2015 archives from the Department of Pathology at Peking University People's Hospital. The serum and urine samples were collected from PCa and BPH patients who were admitted to Peking University People's Hospital from 2010 to 2015. The collection of human tissues and serum/urine samples used in this study was approved by the Ethics Committee of Peking University People's Hospital and was performed according to the Declaration of Helsinki guidelines.

### Antibodies, Reagents, and Cell Culture

Antibodies against extracellular signal-regulated kinase (ERK), phosphorylated ERK (p-ERK), AKT, p-AKT, E-cadherin, and  $\beta$ -actin were purchased from CST. The polyclonal antibody and neutralizing antibody against PSMP were produced in our lab as previously described (9). PC3, DU145, and THP-1 cell lines were obtained from the American Type Culture Collection (ATCC) and cultured following the recommended protocol. granulocyte-macrophage colony-stimulating factor (GM-CSF), interleukin-4 (IL4), tumor necrosis factor- $\alpha$  (TNF- $\alpha$ ), and lipopolysaccharide (LPS) were purchased from BioLegend. Enzyme-linked immunosorbent assay (ELISA) kits to detect IL1 $\beta$ , IL6, IL10, interferon- $\gamma$  (IFN- $\gamma$ ), and CCL2 were from eBioscience. The PSMP detection method was previously described (10).

### Immunohistochemistry (IHC)

In this study, we used a polyclonal antibody to detect PSMP expression in biopsy samples. The whole process was described in our previous study (9). In brief, after obtaining the paraffin slides, the slides were deparaffinized and hydrated sequentially at 70°C for 4 h, 100–75% ethanol 5 min each stage; non-specific binding sites were blocked with goat serum; the sections were incubated with the rabbit anti-hPSMP polyclonal antibody used at a concentration of 5  $\mu$ g/ml, 37°C for 2 h, and horseradish peroxidase (HRP)-conjugated goat anti-rabbit IgG antibody as the secondary antibody at room temperature for 1 h; HRP reaction was performed; and finally, PSMP expression was individually evaluated and scored by two pathological specialists. IHC results were evaluated by a semiquantitative approach used to assign an H-score (or "histo" score). First, the staining score was determined by the intensity of positive staining (no staining = 0; weak staining = 1; moderate staining = 2; strong staining = 3). Then the percentage of cells at each staining intensity level was calculated. An H-score was assigned using the following formula:  $[1 \times (\% \text{ cells } 1+) + 2 \times (\% \text{ cells } 2+) + 3 \times (\% \text{ cells } 3+)]$ . The H score, ranging from 0 to 300, represented higher weight for higher-intensity staining in a given sample. In this study, the median of the H score is 157.

### Pathological Score to PCa Tissue

The pathological score to the collected PCa tissues was according to Gleason score system. Gleason score is based on the architectural features of the PCa cells. Gleason score is ranged from grade 1 to grade 5 by the biopsy's tumor growth pattern

and cell differentiation, and grade 1 indicates the highest differentiation and grade 5 the lowest. In this study, the composite Gleason score was used. The composite Gleason score includes a primary score and a secondary score, which are the numerical values for the two most prevalent differentiation patterns. Therefore, the composite Gleason score in this study ranged from 6 to 10. And according to the new grading (grade group) system published in 2016, the grade group contains group 1 to group 5. The majority of the grade group system is same with the composite Gleason score system, in which the new grade group system tried to distinguish the composite Gleason score “4 + 3” and “3 + 4,” which might indicate a different prognosis. In this study, we focused on comparing the PSMP expression in the tissue with high Gleason score with those in tissues with low grade or intermediate grade. Consistent with our previous study, we used the composite Gleason.

The TNM (tumor, node, metastasis) staging system was used in this study simultaneously, including five stages: stage 0 and stages I through IV. The biopsies we collected were from local tumors and has PCa special developing pattern, the node stage and metastasis stage in these biopsies are negative, and the tumor stage displayed PCa progression. As for T1N0M0 and T2N0M0, the tumor cells are located *in situ*, while for T3N0M0, the tumor cells begin to invade outside the prostate.

### Cell Proliferation Assay

Proliferation assays in this study included the colony formation assay and the cell counting kit-8 (CCK8) assay. For the colony formation assay, PC3 cells were seeded into 96-well plates with 50 cells per well. BSA (200 ng/ml), 100 ng/ml CCL2, 200 ng/ml PSMP, or 1  $\mu$ g/ml neutralizing antibody against PSMP was added into duplicate wells, and 2 weeks later, the number of colonies was counted after crystal violet staining. For the CCK8 assay, PC3 cells were seeded into 96-well plates with 10,000 cells per well. Approximately 1  $\mu$ g/ml neutralizing antibody against PSMP or mouse immunoglobulin G (IgG) as a negative control was added into duplicate wells. CCK8 solution (Dojindo, Japan) was added into wells at 24, 48, 72, and 96 h, and after incubation for 4 h at 37°C, the absorbance of each well was measured at 450 nm with a Wallac1420 Victor 2 automatic plate reader.

### Xenograft Mouse Model and PC3 Metastatic Mouse Model

Six-week-old nude mice were purchased from Peking Experimental Animal Center (Beijing, China). PC3 cells were suspended in phosphate-buffered saline (PBS) and injected into nude mice ( $1 \times 10^6$  cells in 100  $\mu$ l of PBS per mouse). Four weeks later, the mice were equally separated into three groups according to the tumor size, and 50  $\mu$ g of BSA in 100  $\mu$ l of PBS, 50  $\mu$ g of PSMP in 100  $\mu$ l of PBS, or 200  $\mu$ g neutralizing antibody against PSMP in 100  $\mu$ l of PBS was injected adjacent to the tumor. Tumor volumes were calculated by caliper measurements performed weekly to monitor and track tumor growth (tumor volume =  $LWW \times 0.56$ ). At week 8, the mice were sacrificed, and primary tumors were isolated and weighed. Cytokine levels in tumors were measured by ELISA after the tumors were homogenized. All animal experiments were carried out

according to the *Guidelines for the Care and Use of Laboratory Animals* and were approved by the Ethics Committee of Peking University Health Science Center.

### Western Blot Analysis and ELISA

Total proteins were extracted using lysis buffer (pH 7.4, 50 mM Tris-HCl, 4% SDS, 21% Triton X-100, and protease/phosphatase inhibitors), separated by 12.5% sodium dodecyl sulfate polyacrylamide gel electrophoresis (SDS-PAGE) gel and transferred to polyvinylidene difluoride (PVDF) membranes for immunoblotting analysis. The membrane was immersed in a TBST solution containing 5% non-fat milk at room temperature for 0.5 h and incubated with the primary antibody. The membranes were subsequently incubated with HRP-conjugated secondary antibodies at room temperature for 1 h. Proteins were detected in ECL Plus™ System. The  $\beta$ -actin antibody was used to monitor the loading amount. ELISA was performed according to the manufacturer's instructions (eBioscience, USA).

### Cell Migration Assay

PC3 cells ( $1 \times 10^5$ ) were seeded into the upper basket of the 8- $\mu$ m Transwell structure (BD Biosciences), and 0, 10, and 100 ng/ml PSMP protein were added into the lower wells. Because we found that BSA had slight chemoattraction ability, in this experiment PBS was used as negative control. After 12 h, the PC3 cells that had migrated to the lower part were stained with 1% crystal violet for 10 min and counted in six random fields. All of these experiments were conducted in triplicate and were performed a minimum of three times.

### The Establishment of PC3 Knockdown Cell Line

The targeted PSMP sequence in shRNA was CGCAAGGACTGTTTCCATT. The shRNA expression vector and packaging vector were cotransfected to 293T cells using Lipofectamine 2000 according to the manufacturer's instructions. After 48 h, the supernatant was filtered and centrifuged for 2 h in a 50,000 g ultracentrifuge to concentrate the virus. PC3 cells were infected with lentivirus expressing PSMP shRNA, and then selected by puromycin; the PSMP expression level in PSMP knockdown PC3 cells was confirmed by quantitative polymerase chain reaction (qPCR) or Western Blot. We set three groups, including wild-type PC3 cells, PSMP knockdown PC3 cells, and PSMP knockdown PC3 cells rescued by coculture with 50 ng/ml PSMP. After coculture for 48 h, we collected cells in the lower wells for experiments.

### Real-Time PCR

The total RNA was isolated from tissues or cells using TRIzol reagent (Invitrogen). Reverse transcription (RT) reactions were performed by using the RT MasterMix system (Sigma-aldrich). The primers used for real-time PCR are listed as follows: E-cadherin, forward 5'-CCCGCCTTATGATTCTCTGCTCGTG-3' and reverse 5'-TCCGTACATGTCAGCCAGCTTCTTG-3'; ER $\beta$ 1, forward 5'-GGAGAAGTCCAGAACTGACC-3' and reverse, 5'-GCCTGCAGCACACTGGTTG-3'; FN1, forward 5'-GGAAAGTGTCCCTATCTCTGATACC-3' and reverse 5'-AA

TGTTGGTGAATCGCAGGT-3'; Snail1, forward 5'-GCCTAGC GAGTGGTTCTTCT-3' and reverse 5'-TAGGGCTGCTGGAA GGTAAG-3'; TGFB1, forward 5'-GGCCTTCTCTGCTTCTCAT GG-3' and reverse 5'-CCTTGCTGTACTGCGTGTCC-3'; VIM, forward 5'-TACAGGAAGCTGCTGGAAGG-3' and reverse 5'-ACCAGAGGGAGTGAATCCAG-3'; and ZEB1, forward 5'-GG GAGGAGCAGTAAAAGAGA-3' and reverse 5'-TTTCTTGCC CTTCTTCTG-3'. The real-time PCR protocol was followed as previously described (13). The SYBR-green PCR Master Mix was purchased from (Thermo-fisher). All gene expressions were normalized to that of Gapdh.

## THP-1 Cell Line Differentiation to M1/M2 Macrophages

Monocytes separated from human PBMCs polarized into M1 and M2 macrophages were examined by following the process described in a previous report (14). In brief, THP-1 cells were cultured according to ATCC recommendation. THP-1 cells were incubated with 150 nM PMA for 24 h at first and then cultured in medium for another 24 h. The monocytes would be polarized into M1 macrophages if incubated with 20 ng/ml of IFN- $\gamma$  and 10 pg/ml of LPS, or would be polarized into M2 macrophages by incubating with 20 ng/ml of IL4 and 20 ng/ml of IL13.

## Flow Cytometric Analysis

Cells were taken and blocked in 5% fetal bovine serum for 20 min and then stained with CCR2-APC (BioLegend) at 4°C for 30 min. Data were acquired from FACScaliber (BD Biosciences) and analyzed using FlowJo 7.6 (TreeStar).

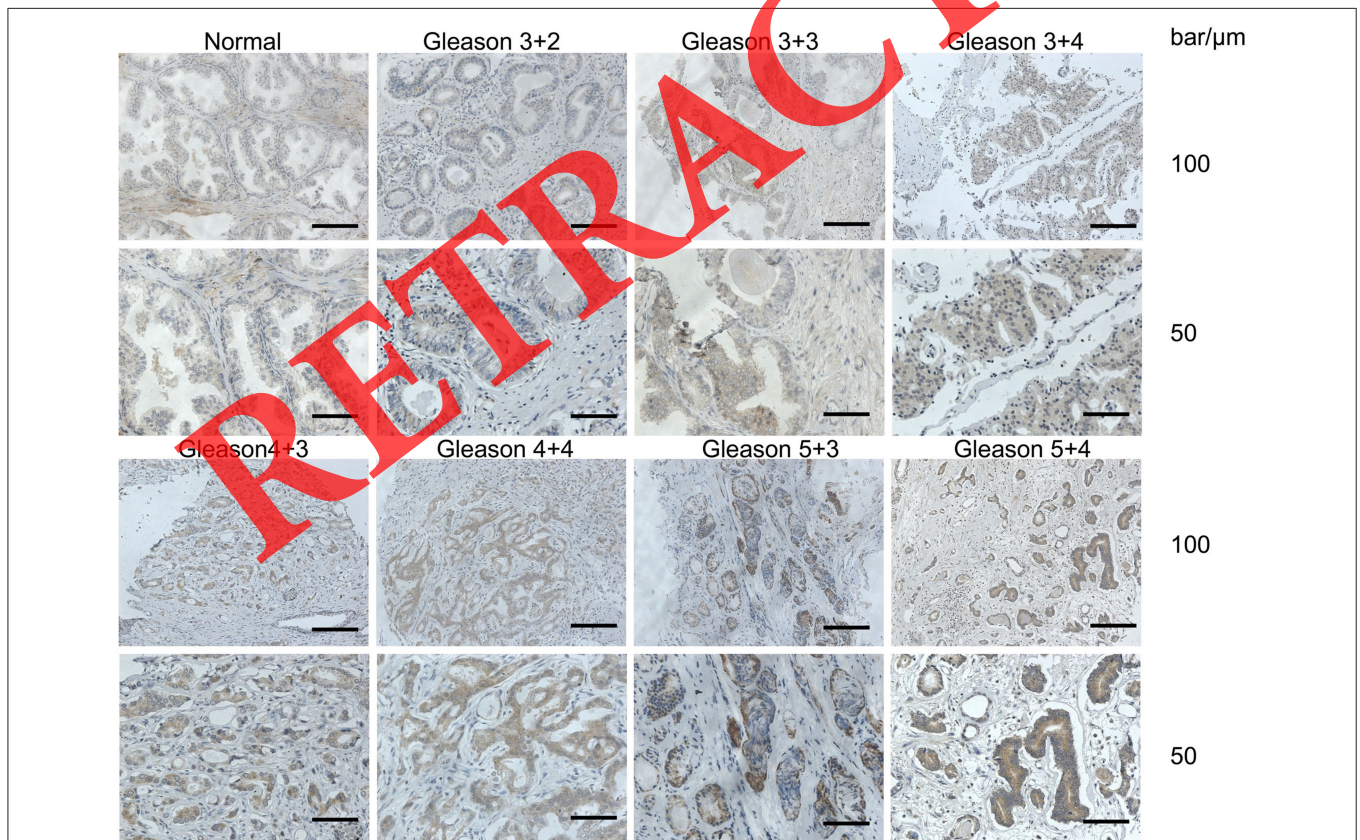
## Statistics

All data are presented as the mean  $\pm$  SD. Student's *t*-test was used to carry out all statistical analyses. *P* values  $\leq 0.05$  were considered statistically significance, and on statistical graphs, \*means  $0.05 \leq P \leq 0.1$ , \*\*means  $0.01 \leq P \leq 0.05$ , and \*\*\* means  $P \leq 0.01$ .

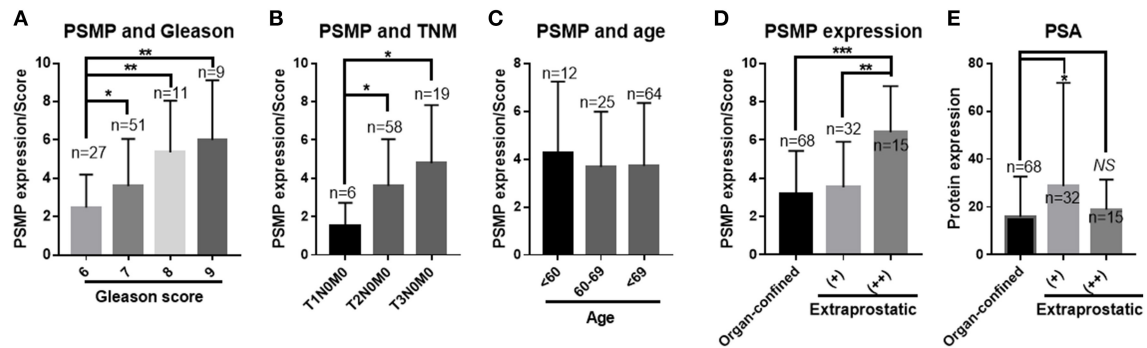
## RESULTS

### PSMP Expression in PCa Tissues Was Higher Than in Benign Prostate Hyperplastic Tissues

The correlation between PSMP expression and PCa was first investigated using IHC in prostate biopsy samples from 100 PCa patients. PSMP expression was detected by an anti-PSMP polyclonal antibody produced by the Ying's lab. As shown in Figure 1, PSMP expression in PCa tissues varied with different



**FIGURE 1** | PSMP expression levels were detected in normal human prostate and PCa tissues. After collecting normal prostate tissues and cancer biopsy tissues, a polyclonal antibody against PSMP was used to determine PSMP expression levels in different prostate tissues by IHC. In this figure, representative slides including one normal prostate tissue and PCa tissues with high, medium, or low Gleason scores are displayed.



**FIGURE 2 |** PSMP expression levels were analyzed in collected PCa tissue samples. **(A)** PCa samples were divided into four groups based on their total Gleason scores, and PSMP expression levels were scored and statistically analyzed among groups with different Gleason scores. **(B)** The same samples were grouped by TNM grade, and PSMP expression level was checked and analyzed. **(C)** Samples were grouped by the donor age, <60, 60–69, and 70≤, and PSMP expression level was analyzed. **(D,E)** Samples were grouped by negative EPE, low EPE, high EPE, PSMP expression level, and serum PSA level.

Gleason scores compared with that in normal prostate tissues. In PCa tissues with the composite Gleason scores 5, 6, 7, 8, and 9, PSMP expression was relatively higher than that in normal human prostate tissues.

In the statistical results from the composite Gleason score of 100 PCa patients, PSMP expression levels were correlated with the composite Gleason score, which is a main diagnostic reference for PCa, and a higher PSMP expression level indicated a higher composite Gleason score (Figure 2A). Consistent with the Gleason score, the PSMP expression level gradually increased from T1N0M0 to T2N0M0 to T3N0M0 (Figure 2B). Therefore, the PSMP expression level is highly related to PCa progression.

As for EPE in 100 patients, PCa biopsy samples with strong EPE showed a high expression level of PSMP, with a significant difference compared with that in the non-EPE group or the weak EPE group (Figure 2C). However, PSA, a well-known diagnostic marker of PCa, was not significantly different among the three groups (Figure 2D). Furthermore, we summarized the other risk factors in PCa, including age, mean serum tPSA, mean biopsy Gleason score, mean tumor area/score, TNM grade/T, positive surgical margin/%, and lymph node metastasis, as shown in Table 1 and Figure 2E. As a classic risk factor, only positive surgical margin was highly correlated with EPE. Based on these findings, we hypothesized that PSMP might promote EPE progression and PCa metastasis.

### PSMP Showed a Different Expression Pattern Between Cancer Tissues and Adjacent Tissues

In another parallel study, 97 PCa tissues and their corresponding adjacent para-cancerous tissues were collected and analyzed by using IHC. The composite Gleason score, tumor volume, TNM staging, and PSMP expression level were evaluated. For the comparison of normal prostate tissues, adjacent tissues, and PCa tissues, PCa tissues displayed the highest PSMP expression level, and normal human prostate tissue displayed the lowest PSMP level (Figure 3A). Meanwhile, PSMP expression in adjacent tissues was higher than that in normal tissues and lower than

that in PCa tissues (Figure 3A). The Gleason score is the gold standard to grade PCa, and in this analysis, we explored the composite Gleason score and PSMP expression in both the cancer group and the adjacent group. As shown in Figure 3B, when the composite Gleason score was <6, PSMP expression showed no significant difference between the PCa group and the adjacent group or between the groups with different Gleason scores. However, when the composite Gleason score was more than 7, the PSMP expression level gradually increased and was positively correlated with the Gleason score. On the other hand, in the corresponding adjacent tissues, PSMP displayed a low expression level (Figure 3B). For the other risk factors, tumor volume and pathological grade, larger tumors had a higher PSMP expression level (Figure 3C), and grade III PCa had a higher PSMP expression level than grade II PCa and the adjacent group, while PSMP was scarce and with no significant difference in the adjacent tissues (Figure 3D).

Based on the aforementioned findings, PSMP is no doubt a risk factor and potential diagnostic marker for PCa, especially for aggressive PCa, with Gleason scores more than 5 or EPE plus positive surgical margins.

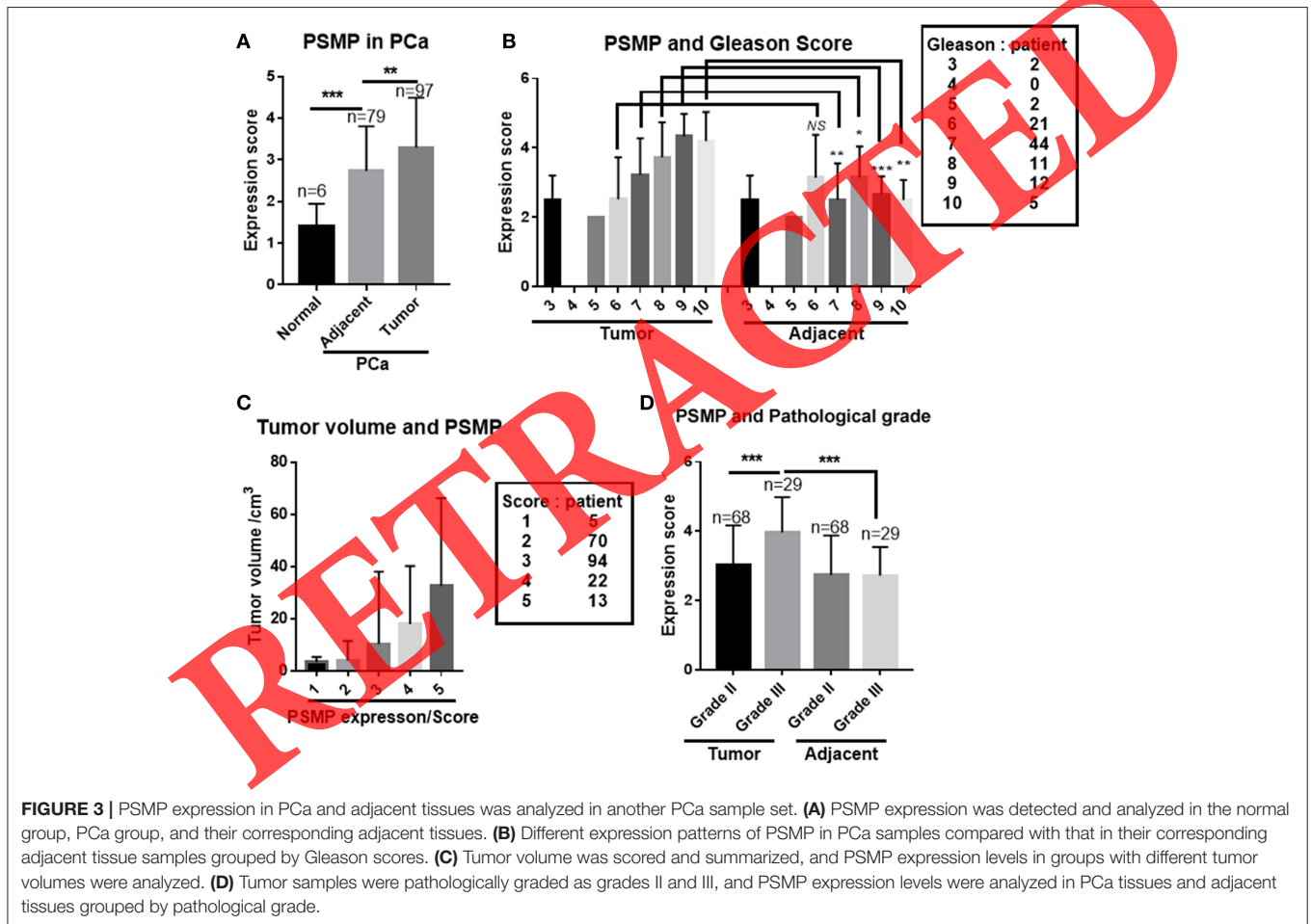
### Compared With Serum PSA, Serum and Urine PSMP Was Not Qualified Enough to be an Indicator to Diagnose PCa

PSA belongs to the kallikrein-related peptidase family and is secreted by the epithelial cells of the prostate gland. PSA is regularly detected in male serum samples, and its levels are elevated in PCa or prostate disorders (15). PSA has already been widely recognized and accepted as an indicator of PCa, prostatitis, and BPH (16). In this study, we collected serum and urine samples from patients with PCa or BPH and prostate biopsy samples to obtain Gleason scores. PSA levels were detected by ELISA, and PSMP expression was detected by bead-based flow cytometry.

First, total PSA in both the low-grade and medium-grade PCa groups had a higher concentration than that in the BPH group (Figure 4A); however, free PSA displayed no significant

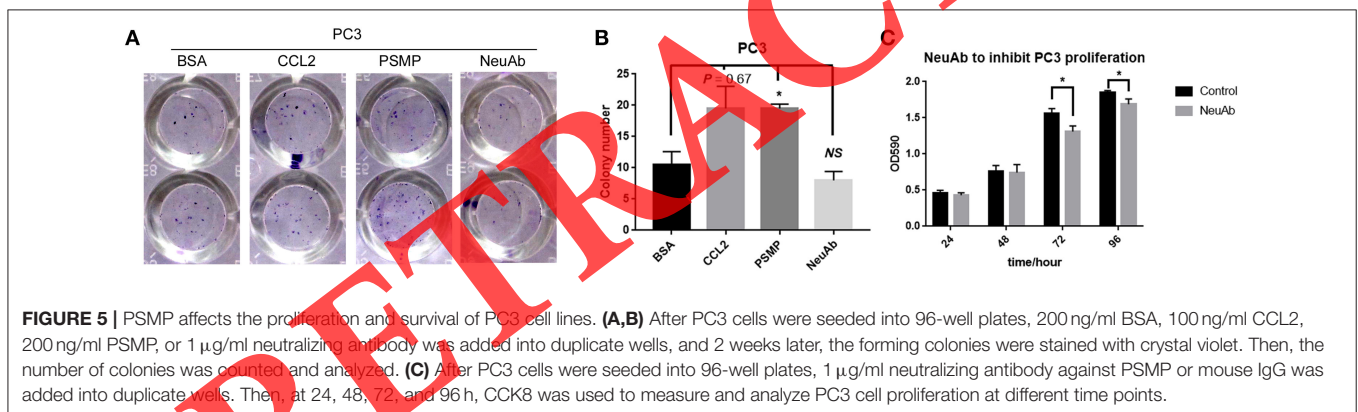
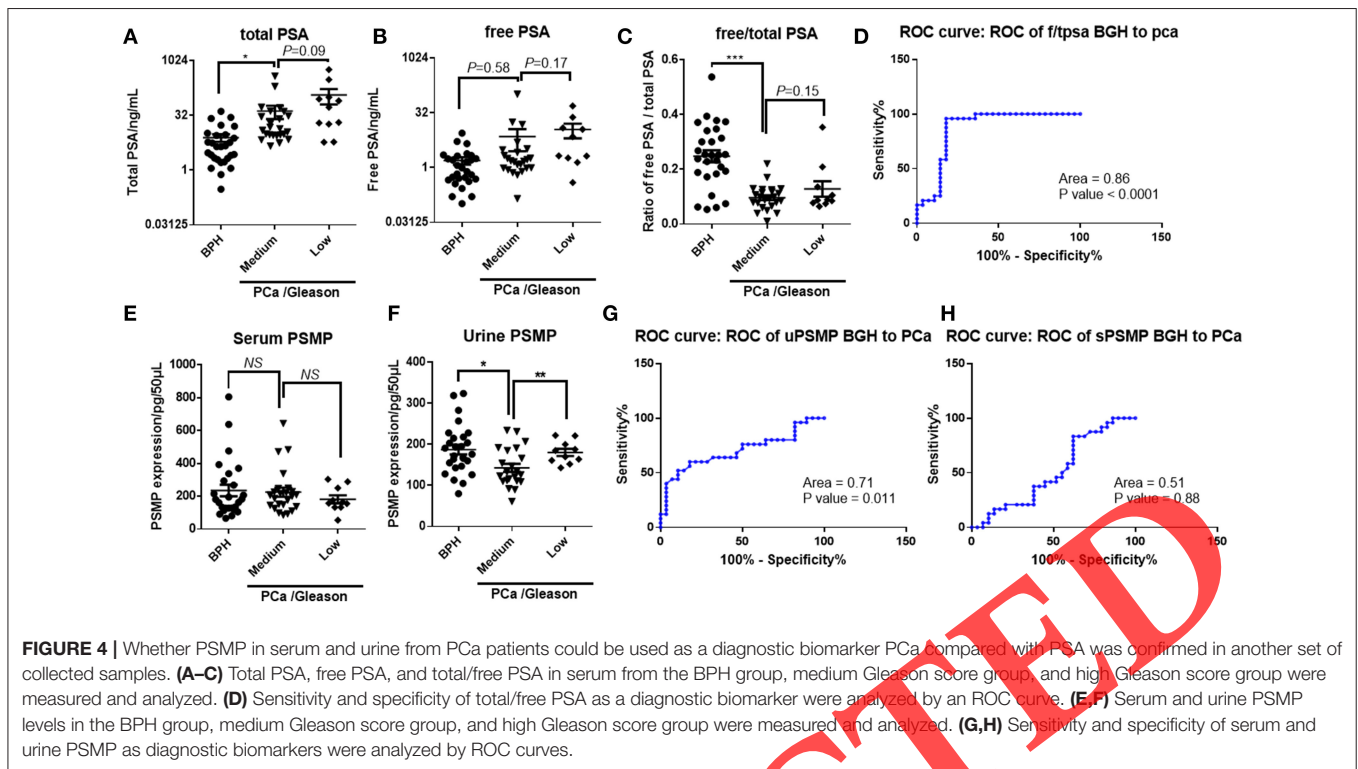
**TABLE 1** | Comparison of study parameters between organ-confined and extraprostatic extension group.

Item	Organ-confined (-) (n = 68)	Extraprostatic (+) (n = 32)	Extraprostatic(++) (n = 15)	P(-vs.+)	P(-vs.++)	P(+vs.++)
Mean age/yr	70.22 ± 0.837	68.31 ± 1.438	64.93 ± 2.243	0.2265	0.0124	0.0247
Mean serum tPSA ρ <sub>B</sub> /(ng·mL <sup>-1</sup> )	15.87 ± 2.059	28.68 ± 10.46	19 ± 3.208	0.0559	0.5002	0.4088
Mean PSMP expression/ score (0–8)	3.162 ± 0.2753	3.529 ± 0.576	6.4 ± 0.6234	0.5555	< 0.0001	0.002
Mean biopsy Gleason score	6.926 ± 0.1115	6.882 ± 0.208	7.467 ± 0.2153	0.8582	0.0396	0.0608
Mean tumor area/ score (1–3)	2.676 ± 0.07962	2.882 ± 0.1176	2.733 ± 0.1817	0.2295	0.7651	0.4866
TNM grade/T	2 ± 0.05132	2.176 ± 0.09531	2.867 ± 0.09085	0.1229	< 0.0001	< 0.0001
Positive surgical margins/%	30%	11%	60%	0.1152	0.0339	0.0031
Lymph node metastatic/%	2.90%	0%	0%	0.4802	0.5073	



difference between the BPH and PCa groups (**Figure 4B**). Moreover, the ratio of free PSA to total PSA in the PCa group was dramatically lower than that in the BPH group, while there was no difference between the low-grade and medium-grade groups (**Figure 4C**). Based on ROC curve analysis, free/total PSA in serum showed a relatively high sensitivity and specificity to

distinguish BPH and PCa (**Figure 4D**), which was consistent with a previous report showing that PSA is a biomarker of PCa. Furthermore, PSMP existing in serum and urine was detected and analyzed similar to PSA. Unlike PSA, PSMP concentration in serum was similar among the three groups (**Figure 4E**), while in urine, PSMP in the medium-grade group



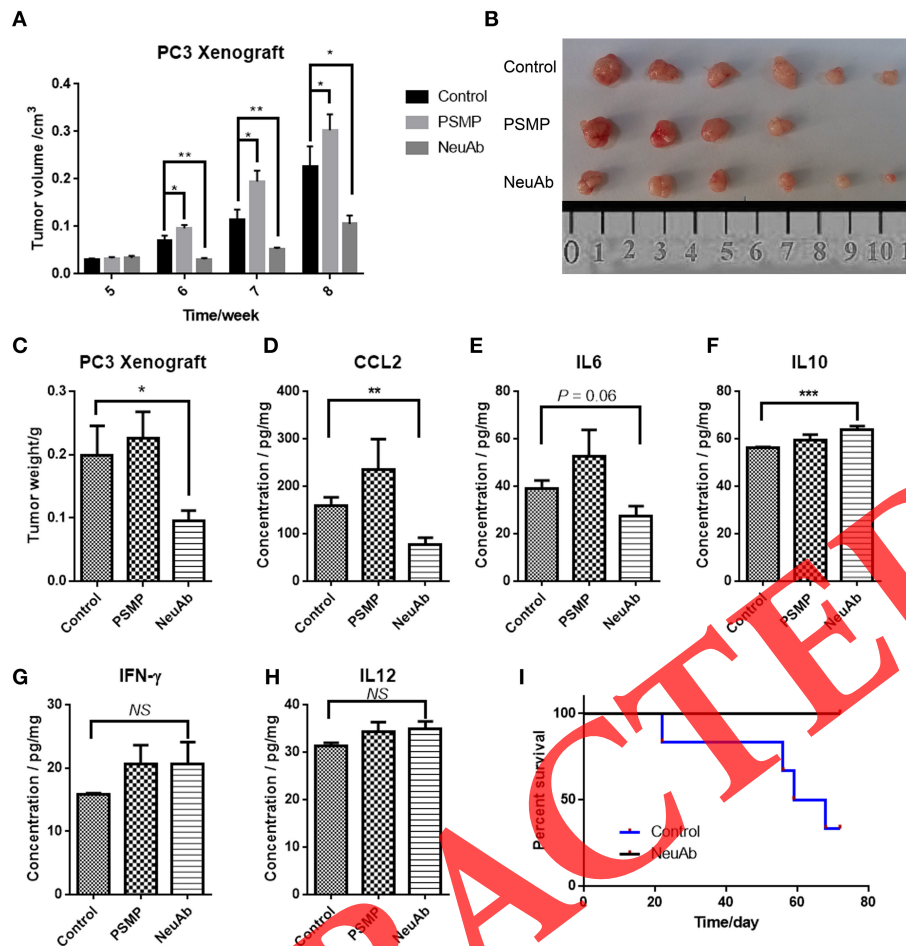
was slightly lower than that in the low-grade group and the BPH group (**Figure 4F**). Based on ROC curve analysis, serum PSMP could not be used as a biomarker to distinguish PCa from BPH (**Figure 4H**), but urine PSMP showed a potential as a diagnostic indicator of PCa, even though it is not as good as PSA (**Figure 4G**).

Given that PSMP is expressed locally in prostate tissue and related to aggressive PCa, PSMP in serum and urine seemed insufficient to indicate prostate tumorigenesis, but for cancer progression, PSMP in urine might be an indicator of PCa metastasis as shown in **Figure 4F**. Paradoxically, we found higher PSMP expression in PCa tissues with higher Gleason scores but lower expression in urine samples, which might be due to a complicated PSMP metabolism in the human body. Next,

we focused on PSMP functions during PCa progression and metastasis.

### PSMP Could Accelerate PC3 Cell Colony Formation, While Neutralizing Antibody Against PSMP Had a Slight Effect on PC3 Cell Proliferation

One important characteristic of aggressive or metastatic cancer cells is their high potential for proliferation. We first assessed the role of PSMP in PCa cell growth through colony formation assays, and as shown in **Figures 5A,B**, CCL2, as a positive control, and PSMP could accelerate PC3 cell colony formation compared with the control (BSA), while the neutralizing antibody against PSMP could inhibit colony growth of PC3 cells due



**FIGURE 6 |** The PSMP-neutralizing antibody could suppress primary tumor growth and mortality due to metastasis. **(A)** Approximately  $1 \times 10^6$  PC3 cells were subcutaneously injected into nude mice at week 0, and at week 4, 100  $\mu$ g BSA in 100  $\mu$ l PBS, 50  $\mu$ g PSMP in 100  $\mu$ l PBS, or 200  $\mu$ g neutralizing antibody against PSMP in 100  $\mu$ l PBS was injected adjacent to the tumors in the three groups, and tumor size was measured and compared among the three groups every week until week 8. **(B,C)** At week 8, mice from three groups were sacrificed, and primary tumors were isolated and weighed. **(D-H)** Expression of cytokines, including CCL2, IL6, IL10, IFN- $\gamma$ , and IL12, in tumors was measured by ELISA after the tumors were homogenized. **(I)** Nude mice were injected with  $1 \times 10^6$  PC3 cells through tail veins and separated into two groups, and then 100  $\mu$ g of mIgG or neutralizing antibody was intraperitoneally injected every 2 weeks, followed by monitoring mouse activity and calculating the survival rate.

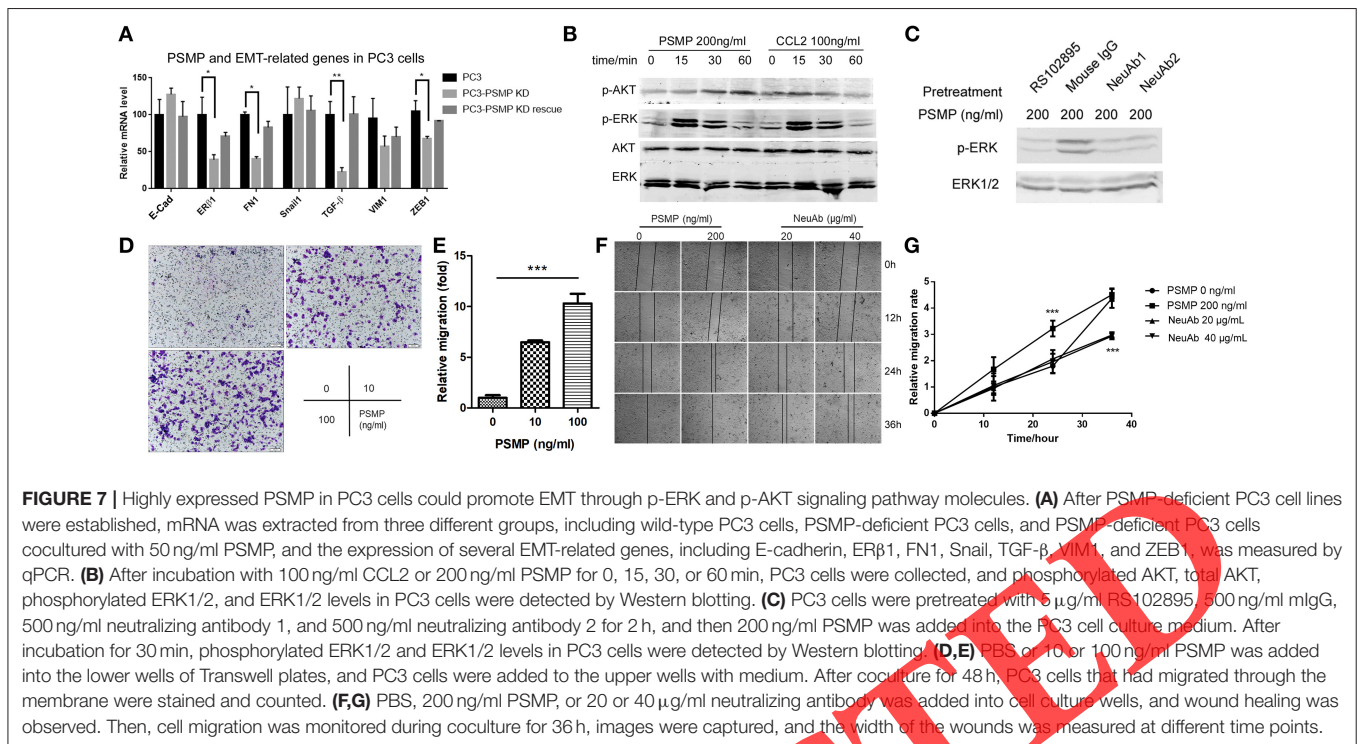
to existing autocrine PSMP. To further confirm the role of PSMP in PC3 cell proliferation, we used a neutralizing antibody against endogenous PSMP in a CCK8 assay to block the influence of autocrine PSMP on PC3 cell growth. At 72 and 96 h after seeding PC3 cells, cell proliferation in the NeuAb group was slightly lower than that in the control group (mIgG) (Figure 5C).

### In a Xenograft Mouse Model Established by Using the PC3 Cell Line in Nude Mouse, PSMP Promoted Tumor Growth *in situ*, and the Neutralizing Antibody Against PSMP Could Reverse This Effect

Based on the *in vitro* results, PSMP may have a role in PCa cell proliferation. To further confirm this speculation, we established

a xenograft mouse model to explore the role of PSMP in tumor growth *in vivo*. First, nude mice were subcutaneously injected with the same number of PC3 cells, and after 4 weeks, mice were equally separated into three groups. Then, PBS, PSMP, or the neutralizing antibody was individually injected into the tumors, and tumor volume was monitored every week. From the 6th week to the 8th week, the PSMP-injected group displayed faster tumor growth than the control group, while the neutralizing antibody group displayed slower tumor growth than the control group (Figure 6A). On the 9th week, the mice were sacrificed, and the tumors were isolated. As shown in Figure 6B, the tumors from the three groups were weighed, and consistent with tumor volume, the tumor weight in the PSMP-injected group was higher than that in the control group, and the tumor weight in the neutralizing antibody group was lower than that in the control group (Figure 6C).





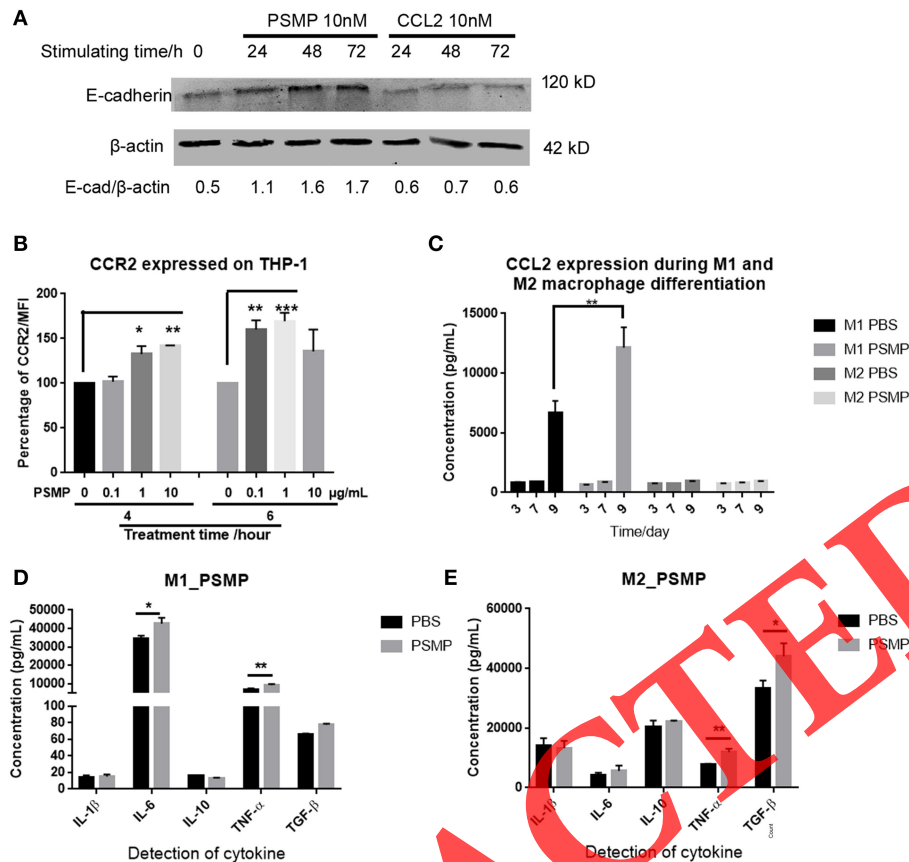
In addition to its overall effect on tumorigenesis, PSMP has been shown to be a chemokine that has some influence on the immune environment. Tumors from the three groups were then homogenized, and cytokine levels were detected. Although nude mice are immune deficient and lack T and B cells, they still have some immune cells derived from the bone marrow and cytokines in the tumor environment. CCL2 expression was higher in the PSMP-injected group and lower in the neutralizing antibody group than that in the control group (Figure 6D), as was IL6 expression (Figure 6E). The levels of IL10, IL12, and IFN-γ, mainly produced by T cells, were not significantly different in these three groups (Figures 6F–H). CCL2 and IL6 are mainly produced by monocytes, and activated macrophages had been reported to have a supporting function on PCa growth, which were also relevant to PSMP expression. IL10 usually indicated immune suppression, which IL12 and IFN-γ were vital to T cell proliferation and activation.

To investigate the effect of PSMP on PCa metastasis, we intravenously injected equal numbers of PC3 cells into nude mice. mIgG and neutralizing antibody were intraperitoneally injected every 2 weeks. Based on mouse activity and the survival rate, as shown in Figure 6I, the survival rate in the neutralizing antibody group was 100%, while the mouse in the control group began to die from the third week, and the final survival rate was 25%. The results of this experiment strongly support the hypothesis that PSMP promotes PCa cell survival, and the neutralizing antibody against PSMP holds promise for clinical PCa treatment.

## PSMP Could Influence EMT in PC3 Cells, Through Upregulating the Phosphorylation of ERK and AKT in a CCR2-Dependent Manner

Epithelial–mesenchymal transition (EMT), usually occurring during cancer progression, is featured by a decrease in cell polarity and an increase in migration and invasion and has already been proven to be a vital step by which tumors become more aggressive. When EMT occurs, well-known biomarkers, including E-cadherin and ERβ1, are upregulated, while FN1, snail1, TGF-β, VIM1, and ZEB1 are downregulated (17).

In this study, we also explored the impact of PSMP on EMT in PCa cells. To understand this effect, we first established a PSMP-deficient PC3 cell line. Then, the mRNA levels of EMT-related molecules were detected in three groups of cells, namely, wild-type PC3 cells, PSMP knockdown PC3 cells, and PSMP knockdown PC3 cells rescued by PSMP. As shown in Figure 7A, E-cadherin was upregulated and FN1, TGF-β, VIM1, and ZEB1 were downregulated at the mRNA level, while the change in these molecules was reversed by PSMP. PSMP seemed to have no influence on the mRNA expression of ERβ1 or snail1 (Figure 7A). Furthermore, EMT-related signaling pathway molecules, such as p-ERK and p-AKT, were explored *in vitro*. After coculture with PSMP or CCL2 for different time points, PC3 cells were collected and analyzed by Western blotting. At 15 and 30 min after PSMP or CCL2 stimulation, p-ERK was upregulated, but p-AKT was upregulated at 30 and 60 min in response to PSMP compared with total ERK and total AKT



**FIGURE 8** | PSMP could also promote macrophage polarization and monocyte adhesion. (A) THP-1 cells were incubated with 10 nM PSMP or CCL2 for 0, 24, 48, or 72 h, and then E-cadherin and  $\beta$ -actin expression levels were measured by Western blotting. (B) after THP-1 cells were incubated with 0, 0.1, 1, or 10  $\mu$ g/ml PSMP for 4 or 6 h, CCR2 expression on THP-1 membrane was detected by flow cytometry. (C) CCL2 secreted into the medium was measured by ELISA at different time points, at day 3, day 7, and day 9, during which monocytes were induced to differentiate into M2 macrophages with or without incubation with PSMP. (D,E) The expression of several cytokines, including IL1 $\beta$ , IL6, IL10, TNF- $\alpha$ , and TGF- $\beta$ , were detected by ELISA in the culture medium from M1/M2 macrophages.

(Figure 7B). Then, the CCR2 antagonist RS102895 and PSMP-neutralizing antibodies were employed in the PC3 coculture experiment. Based on p-ERK levels, compared with cells treated with PSMP, PC3 cells cotreated with PSMP and RS102895 and cells cotreated with PSMP and neutralizing antibodies showed inhibition of p-AKT activity (Figure 7C). These results revealed that PSMP might promote EMT through the p-ERK signaling pathway in a CCR2-dependent manner.

To explore the role of PSMP in PC3 migration, we performed Transwell assays. PBS or PSMP was added to the lower wells as the chemoattracting target, and PC3 cells were added to the upper wells. As shown in Figure 7D, PSMP could promote PC3 cells to migrate through the membrane in a dose-dependent manner (Figure 7E). Furthermore, wound healing assays were carried out. Compared with the controls, PSMP could suppress the proliferation rate and migration speed of PC3 cells but could not alter the final effects (Figures 7E,G), possibly due to its autocrine functions in PC3 cells. On the other hand, compared with the control, the neutralizing antibody against PSMP could inhibit the wound healing effect of PC3 cells (Figures 7E,G).

### In Addition to Attracting Monocytes, PSMP Could Affect the Monocyte Chemoattraction Potential by Upregulating CCR2 and Promote M2 Macrophage Polarization

PSMP was previously reported and described as a chemokine that could chemoattract monocytes to inflamed tissues. Based on our results in nude mice, PSMP, secreted by tumor cells, might have some influence on the immune environment. First, to examine the effect of PSMP on monocytes, we cocultured THP-1 cells with PSMP or CCL2 and then collected and analyzed the cells by flow cytometry and Western blotting. As shown in Figure 8B, PSMP upregulated CCR2 expression on the THP-1 cell surface at 4 and 6 h. As shown in Figure 8A, PSMP upregulated E-cadherin expression on the THP-1 cell surface at 24, 48, and 72 h. These results revealed that PSMP could enhance chemoattractant sensitivity and adhesion of monocytes to target tissues. This mechanism may be shared both by inflamed tissues and the tumor microenvironment.

On the other hand, the effect of PSMP on M2 macrophages was also explored. M2 macrophages are a subtype of macrophages that can modulate the inflammatory reaction. PSMP was added during the induced differentiation of monocytes to M2 macrophages, and CCL2 expression was detected at different time points. CCL2 expression in M2 macrophages showed no difference during this progression (Figure 8C). In addition, after coculture with PSMP, cytokine levels in M2 macrophages were measured by ELISA. In M2 macrophages, PSMP significantly upregulated TNF- $\alpha$  and TGF- $\beta$  expression but not IL1 $\beta$ , IL6, or IL10 (Figure 8E), which was different with M1 macrophages (Figure 8D).

These results indicated that PSMP could enhance monocyte migration, promote monocyte differentiation to M2 macrophages, and upregulate PCa-related cytokine expression.

## DISCUSSION

In the study, we discovered the evidences supporting a critical role for PSMP in PCa. First, we used antibody against PSMP to check the PSMP expression level in PCa tissues and discovered high-Gleason-scored PCa tissues had a higher PSMP expression level than the low-scored tissues, which indicated PSMP might be related to PCa progression. Second, our results demonstrated that PSMP secreted by the tumor cells promoted the growth and survival of PCa cells and EMT by directly stimulating tumor cell. Third, we observed PSMP chemoattracted monocyte/macrophage infiltration in a CCR2-dependent manner and influenced macrophage differentiation to change the microenvironment of prostate tumors by indirectly.

The PSA level in serum has already been employed to diagnose PCa, which in this study showed a unique superiority to PSMP for diagnosis. However, PSMP expression in PCa tissues may be more meaningful in treatment than in the diagnosis of PCa. According to our results, PSMP expression was highly correlated with aggressive PCa, including EPE, positive margin, and EMT. Researchers have tried to understand how tumors are generated for decades all over the world, and in the last 10 years, they have gradually realized that metastasis was a more lethal process than tumorigenesis. Therefore, more attention has been paid to exploring the therapeutic targets for preventing metastasis. Ogita's team has found that a molecule, epithelial membrane protein 1, was highly expressed in PCa samples obtained from patients with higher Gleason scores and promoted tumor metastasis by enhancing cell migration *via* copine-III and Rac1 (18). SREBP-2, sterol regulatory element-binding protein-2, which is expressed by normal cells and can influence cholesterol biosynthesis and homeostasis, was found to promote PCa metastasis *via* transcriptional activation of c-MYC (19). Furthermore, ligands and their receptors, such as CXCL12 and CXCR4 (20), tumor-associated exosomes (21), transmembrane proteins, such as CXCR6 (22) and TLR9 (23), protein kinases and related signaling pathways, have already been found to be involved in PCa metastasis. Among these molecules, secreted proteins or transmembrane proteins should be the ideal targets for PCa therapy. PSMP could enhance the EMT in PC3 cells *in*

*vivo* and *in vitro*, so PSMP has the potential to be a therapeutic target of PCa.

Cytokines have already been widely implicated in PCa progression. PCa usually develops from BPH and grows slowly. Bone marrow and lymph nodes are the main target organs for metastasis (24, 25). In these inflammation-associated processes, several cytokines, such as TNF- $\alpha$ , EGF, IL6, IL1, TGF- $\beta$ , and MCP-1, have been reported to be involved (26, 27). TNF- $\alpha$  is a well-known factor that can affect different tumors through binding to its receptor, TNFR (28–31). EGF-EGFR and its signaling pathway have been reported to be associated with tumor progression, especially in androgen-independent PCa metastasis (32). IL6 is found to be widely involved in several tumors, including PCa (33), breast cancer (34), lung cancer (35), and melanoma (36). CCL2, also known as MCP-1, is a classical chemokine whose receptor is CCR2, and the CCL2-CCR2 axis has already been found to be involved in inflammatory processes, including immune cell chemoattraction, differentiation, and proliferation (37), and growth and metastasis in several cancer types, such as breast cancer (38) and PCa (27, 39). Moreover, CCL2 has been reported not only to directly stimulate PCa cell proliferation and survival but also to modify the microenvironment of skeletal metastases (40). CCR2 expressed on monocytes, macrophages, and PCa cells can be influenced by its ligand, and then the activated downstream signaling pathway can contribute to PCa progression.

Given the critical role of CCL2 in PCa progression, it will be valuable to develop a therapeutic method targeting CCR2 or CCL2 to eliminate PCa-associated morbidity in the clinic. The CCL2-CCR2 axis has been shown to play an important role in multiple tumors in different studies. The CCL2-CCR2 axis has been recognized as an ideal therapeutic target in PCa therapy. Carlumab, also known as CNTO888, was developed from a neutralizing antibody against CCL2 (41). Based on previous research, CCL2 was identified as a PCa biomarker for PCa diagnosis (42), and Pienta's team reported that CCL2 could promote PCa growth through the regulation of macrophage infiltration (43). The neutralizing antibody against CCL2 was also found to suppress hepatocellular carcinoma in a mouse model by enhancing NK cell cytotoxicity and IFN- $\gamma$  production in the liver (44). For breast cancer, CCL2-CCR2 signaling was reported to mediate fibroblast-cancer cell interactions in basal-like breast cancer progression and alter macrophage function in the microenvironment. The neutralizing antibody against CCL2, carlumab, was first used in a clinical trial in 2003; however, carlumab was unable to suppress PCa independently, which revealed the lack of consideration of the redundancy of chemokines in previous studies. CCR2 expressed on PCa cells and monocyte-macrophages might be critical for tumorigenesis and microenvironment modification, but the function of CCR2 does not rely on only one of its several ligands including CCL2. We found PSMP could be produced by PCa cells but not by macrophages, which was different from CCL2 produced by macrophages, endothelial cells, and cancer cells. Furthermore, PSMP could enhance M1 macrophage to secrete more CCL2, which indicated that PSMP played a different role from CCL2 in regulating monocyte/macrophage

migration and differentiation. Altogether, even though CCL2-neutralizing antibody has failed in clinical trials, we still believe PSMP-neutralizing antibodies will show more specific therapeutic effects in future clinical trials. In this study, we demonstrated that a PSMP-neutralizing antibody could inhibit primary tumor growth in nude mice and promote the survival of nude mice injected with PC3 cells, but could not totally eliminate the PC3 cells. Besides, mice injected with neutralizing antibody of PSMP could keep 100% survival compared with control group in metastasis mice model, which means PSMP might display more function on the metastasis rather than primary tumorigenesis.

Although PSMP was primarily found as a chemokine with the receptor CCR2, very similar to CCL2, PSMP can also act as a growth factor in many tissues according our previous study. PSMP is upregulated in several tumor types, such as lung cancer, gastrointestinal cancer, PCa, and kidney cancer. Our results indicated that PSMP, as a growth factor, can promote PCa cell proliferation through the signaling pathway molecules p-AKT/p-ERK in a CCR2-dependent manner. Additionally, the effect of PSMP on macrophage differentiation is another important function during metastasis.

The aim of this study was to find a therapeutic neutralizing antibody for aggressive PCa. In this study, we found that the different expression levels of PSMP are correlated with Gleason scores, EPE, and positive margin; however, we were unable to find differences in serum or urine from PCa patients, which reduced the potential of PSMP as a diagnostic biomarker. The result might be due to PSMP protein expressed locally in prostate tissue and having a complicated metabolism in human body, which made it difficult to become a biomarker of serum or urine to indicate PCa progression. The results from PCa patient samples highlight it as a potential therapeutic target. To achieve this purpose, we have already developed a neutralizing antibody against PSMP, which has been shown to have the ability to neutralize PSMP in a mouse model of colitis (10). The neutralizing antibody against

PSMP could also inhibit PCa progression in a mouse model by blocking PSMP.

In summary, we proved PSMP is a key secreted protein involved in PCa progression by promoting the proliferation, migration, and microenvironment changes and then developed an effective neutralizing antibody for future research and clinical trials.

## DATA AVAILABILITY

The raw data supporting the conclusions of this manuscript will be made available by the authors, without undue reservation, to any qualified researcher.

## ETHICS STATEMENT

The collection of human tissues and serum/urine samples used in this study were approved by the Ethics Committee of Peking University People's Hospital and were performed according to the Declaration of Helsinki guidelines.

## AUTHOR CONTRIBUTIONS

XP and YW contributed to the design of this study and the manuscript writing. XP and DZ completed the main project and most of the experiments. KX and HH contributed to make the collection standard of the patient biopsies and samples. ZF and SZ contributed to the collection of the urine and serum samples. SS contributed to the IHC experiment in the revised manuscript.

## FUNDING

This work was supported by the National Natural Science Foundation of China (81601369 to XP and 31470842 to YW) and the Guangxi Natural Science Foundation under grant no. 2016GXNSFBA380202.

## REFERENCES

- Filson CP, Marks LS, Litwin MS. Expectant management for men with early stage prostate cancer. *CA Cancer J Clin.* (2015) 65:265–82. doi: 10.3322/caac.21278
- Sartor O, de Bono JS. Metastatic prostate cancer. *N Engl J Med.* (2018) 378:1653–4. doi: 10.1056/NEJMc1803343
- Swanson GP, Basler JW. Prognostic factors for failure after prostatectomy. *J Cancer.* (2010) 2:1–19. doi: 10.7150/jca.2.1
- Ball MW. Epstein, extent of extraprostatic extension independently influences biochemical recurrence-free survival: evidence for further pT3 subclassification. *Urology.* (2015) 85:161–4. doi: 10.1016/j.urology.2014.08.025
- Hong H, Zhang Y, Sun J, Cai W. Positron emission tomography imaging of prostate cancer. *Amino Acids.* (2010) 39:11–27. doi: 10.1007/s00726-009-0394-9
- Peyromaure M, Valeri A, Rebillard X, Beuzebec P, Richaud P, Soulie M, et al. Characteristics of prostate cancer in men less than 50-year-old. *Prog Urol.* (2009) 19:803–9. doi: 10.1016/j.purol.2009.04.010
- Hammerstrom AE, Cauley DH, Atkinson BJ, Sharma P. Cancer immunotherapy: sipuleucel-T and beyond. *Pharmacotherapy.* (2011) 31:813–28. doi: 10.1592/phco.31.8.813
- Loberg RD, Ying C, Craig M, Day LL, Sargent E, Neeley C, et al. Targeting CCL2 with systemic delivery of neutralizing antibodies induces prostate cancer tumor regression *in vivo*. *Cancer Res.* (2007) 67:9417–24. doi: 10.1158/0008-5472.CAN-07-1286
- Pei X, Sun Q, Zhang Y, Wang P, Peng X, Guo C, et al. PC3-secreted microprotein is a novel chemoattractant protein and functions as a high-affinity ligand for CC chemokine receptor 2. *J Immunol.* (2014) 192:1878–86. doi: 10.4049/jimmunol.1300758
- Pei X, Zheng D, She S, Ma J, Guo C, Mo X, et al. The PSMP-CCR2 interactions trigger monocyte/macrophage-dependent colitis. *Sci Rep.* (2017) 7:5107. doi: 10.1038/s41598-017-05255-7
- Valtonen-Andre C, Bjartell A, Hellsten R, Lilja H, Harkonen P, Lundwall A. A highly conserved protein secreted by the prostate cancer cell line PC-3 is expressed in benign and malignant prostate tissue. *Biol Chem.* (2007) 388:289–95. doi: 10.1515/BC.2007.032
- Mitamura T, Pradeep S, McGuire M, Wu SY, Ma S, Hatakeyama H, et al. Induction of anti-VEGF therapy resistance by upregulated expression of microseminoprotein (MSMP). *Oncogene.* (2018) 37:722–31. doi: 10.1038/onc.2017.348
- Pei X, He T, Hall NE, Gerber D, Samulski RJ, Li C. AAV8 virions hijack serum proteins to increase hepatocyte binding for transduction enhancement. *Virology.* (2018) 518:95–102. doi: 10.1016/j.virol.2018.02.007

14. Genin M, Clement F, Fattaccioli A, Raes M, Michiels C. M1 and M2 macrophages derived from THP-1 cells differentially modulate the response of cancer cells to etoposide. *BMC Cancer*. (2015) 15:577. doi: 10.1186/s12885-015-1546-9
15. Catalona WJ, Richie JP, Ahmann FR, Hudson MA, Scardino PT, Flanigan RC, et al. Comparison of digital rectal examination and serum prostate specific antigen in the early detection of prostate cancer: results of a multicenter clinical trial of 6,630 men. *J Urol*. (1994) 151:1283–90. doi: 10.1016/S0022-5347(17)35233-3
16. Velonas VM, Woo HH, dos Remedios CG, Assinder SJ. Current status of biomarkers for prostate cancer. *Int J Mol Sci*. (2013) 14:11034–60. doi: 10.3390/ijms140611034
17. Zeisberg M, Neilson EG. Biomarkers for epithelial–mesenchymal transitions. *J Clin Invest*. (2009) 119:1429–37. doi: 10.1172/JCI36183
18. Ahmat Amin MKB, Shimizu A, Zankov DP, Sato A, Kurita S, Ito M, et al. Epithelial membrane protein 1 promotes tumor metastasis by enhancing cell migration via copine-III and Rac1. *Oncogene*. (2018) 37:5416–34. doi: 10.1038/s41388-018-0286-0
19. Li X, Wu JB, Li Q, Shigemura K, Chung LW, Huang WC. SREBP-2 promotes stem cell-like properties and metastasis by transcriptional activation of c-Myc in prostate cancer. *Oncotarget*. (2016) 7:12869–84. doi: 10.18632/oncotarget.7331
20. Jachetti E, Caputo S, Mazzoleni S, Brambillasca CS, Parigi SM, Griioni M, et al. Tenascin-C protects cancer stem-like cells from immune surveillance by arresting T-cell activation. *Cancer Res*. (2015) 75:2095–108. doi: 10.1158/0008-5472.CAN-14-2346
21. Lundholm M, Schroder M, Nagaeva O, Baranov V, Widmark A, Mincheva-Nilsson L, et al. Prostate tumor-derived exosomes down-regulate NKG2D expression on natural killer cells and CD8+ T cells: mechanism of immune evasion. *PLoS ONE*. (2014) 9:e108925. doi: 10.1371/journal.pone.0108925
22. Singh R, Kapur N, Mir H, Singh N, Lillard JW Jr, Singh S. CXCR6–CXCL16 axis promotes prostate cancer by mediating cytoskeleton rearrangement via Ezrin activation and alphavbeta3 integrin clustering. *Oncotarget*. (2016) 7:7343–53. doi: 10.18632/oncotarget.6944
23. Luo Y, Jiang QW, Wu JY, Qiu JG, Zhang WJ, Mei XL, et al. Regulation of migration and invasion by Toll-like receptor-9 signaling network in prostate cancer. *Oncotarget*. (2015) 6:22564–74. doi: 10.18632/oncotarget.4197
24. Blackard CE. Carcinoma of the prostate: a review. I. Incidence, etiology, pathology, and diagnosis. *J Lancet*. (1967) 87:477–84.
25. Blackard CE. Carcinoma of the prostate: a review. II. Treatment according to clinical stage of the cancer. *J Lancet*. (1968) 88:5–15.
26. Bouraoui Y, Ricote M, Garcia-Tunon I, Rodriguez-Berriguete G, Touffeh M, Rais NB, et al. Pro-inflammatory cytokines and prostate-specific antigen in hyperplasia and human prostate cancer. *Cancer Detect Prev*. (2008) 32:23–32. doi: 10.1016/j.cdp.2008.02.007
27. Loberg RD, Day LL, Harwood J, Ying C, St John FN, Giles R, et al. CCL2 is a potent regulator of prostate cancer cell migration and proliferation. *Neoplasia*. (2006) 8:578–86. doi: 10.1593/neo.06280
28. Hubel K, Mansmann G, Schafer H, Oberhauser F, Diehl V, Engert A. Increase of anti-inflammatory cytokines in patients with esophageal cancer after perioperative treatment with G-CSF. *Cytokine*. (2000) 12:1797–800. doi: 10.1006/cyto.2000.0780
29. de Miguel MP, Royuela M, Bethencourt FR, Santamaria L, Fraile B, Paniagua R. Immunoexpression of tumour necrosis factor-alpha and its receptors 1 and 2 correlates with proliferation/apoptosis equilibrium in normal, hyperplastic and carcinomatous human prostate. *Cytokine*. (2000) 12:535–8. doi: 10.1006/cyto.1999.0585
30. Zubelewicz B, Muc-Wierzgon M, Wierzgon J, Romanowski W, Mazurek U, Wilczok T, et al. Genetic dysregulation of gene coding tumor necrosis factor alpha receptors (TNF alpha Rs) in follicular thyroid cancer—preliminary report. *J Biol Regul Homeost Agents*. (2002) 16:98–104.
31. Garcia-Tunon I, Ricote M, Ruiz A, Fraile B, Paniagua R, Royuela M. Role of tumor necrosis factor-alpha and its receptors in human benign breast lesions and tumors (*in situ* and infiltrative). *Cancer Sci*. (2006) 97:1044–9. doi: 10.1111/j.1349-7006.2006.00277.x
32. Bianco R, Gelardi T, Damiano V, Ciardiello F, Tortora G. Rational bases for the development of EGFR inhibitors for cancer treatment. *Int J Biochem Cell Biol*. (2007) 39:1416–31. doi: 10.1016/j.biocel.2007.05.008
33. Royuela M, Ricote M, Parsons MS, Garcia-Tunon I, Paniagua R, de Miguel MP. Immunohistochemical analysis of the IL-6 family of cytokines and their receptors in benign, hyperplastic, and malignant human prostate. *J Pathol*. (2004) 202:41–9. doi: 10.1002/path.1476
34. Sakurai T, He G, Matsuzawa A, Yu GY, Maeda S, Hardiman G, et al. Hepatocyte necrosis induced by oxidative stress and IL-1 alpha release mediate carcinogen-induced compensatory proliferation and liver tumorigenesis. *Cancer Cell*. (2008) 14:156–65. doi: 10.1016/j.ccr.2008.06.016
35. Kiyohara C, Horiuchi T, Takayama K, Nakanishi Y. IL1B rs1143634 polymorphism, cigarette smoking, alcohol use, and lung cancer risk in a Japanese population. *J Thorac Oncol*. (2010) 5:299–304. doi: 10.1097/JTO.0b013e3181c8cae3
36. Valles SL, Benloch M, Rodriguez ML, Mena S, Pellicer JA, Asensi M, et al. Stress hormones promote growth of B16-F10 melanoma metastases: an interleukin 6- and glutathione-dependent mechanism. *J Transl Med*. (2013) 11:72. doi: 10.1186/1479-5876-11-72
37. Charo IF, Taubman MB. Chemokines in the pathogenesis of vascular disease. *Circ Res*. (2004) 95:858–66. doi: 10.1161/01.RES.0000146672.10582.17
38. Kitamura T, Qian BZ, Soong D, Cassetta L, Noy R, Sugano G, et al. CCL2-induced chemokine cascade promotes breast cancer metastasis by enhancing retention of metastasis-associated macrophages. *J Exp Med*. (2015) 212:1043–59. doi: 10.1084/jem.20141836
39. Lu Y, Cai Z, Galson DL, Xiao G, Liu Y, George DE, et al. Monocyte chemotactic protein-1 (MCP-1) acts as a paracrine and autocrine factor for prostate cancer growth and invasion. *Prostate*. (2006) 66:1311–8. doi: 10.1002/pros.20464
40. Lu Y, Xiao G, Galson DL, Nishio Y, Mizokami A, Keller ET, et al. PTHrP-induced MCP-1 production by human bone marrow endothelial cells and osteoblasts promotes osteoclast differentiation and prostate cancer cell proliferation and invasion *in vitro*. *Int J Cancer*. (2007) 121:724–33. doi: 10.1002/ijc.22704
41. Fetterly GJ, Aras U, Meholic PD, Takimoto C, Seetharam S, McIntosh T, et al. Utilizing pharmacokinetics/pharmacodynamics modeling to simultaneously examine free CCL2, total CCL2 and carlumab (CNTO 888) concentration time data. *J Clin Pharmacol*. (2013) 53:1020–7. doi: 10.1002/jcph.140
42. Tsaur I, Noack A, Makarevic J, Oppermann E, Waaga-Gasser AM, Gasser M, et al. CCL2 chemokine as a potential biomarker for prostate cancer: a pilot study. *Cancer Res Treat*. (2015) 47:306–12. doi: 10.14338/crt.2014.015
43. Loberg RD, Ying C, Craig M, Yan L, Snyder LA, Pienta KJ. CCL2 as an important mediator of prostate cancer growth *in vivo* through the regulation of macrophage infiltration. *Neoplasia*. (2007) 9:556–62. doi: 10.1593/neo.07307
44. Teng KY, Han J, Zhang X, Hsu SH, He S, Wani NA, et al. Blocking the CCL2–CCR2 axis using CCL2-neutralizing antibody is an effective therapy for hepatocellular cancer in a mouse model. *Mol Cancer Ther*. (2017) 16:312–22. doi: 10.1158/1535-7163.MCT-16-0124

**Conflict of Interest Statement:** The authors declare that the research was conducted in the absence of any commercial or financial relationships that could be construed as a potential conflict of interest.

Copyright © 2019 Pei, Zheng, She, Fang, Zhang, Hu, Xu and Wang. This is an open-access article distributed under the terms of the Creative Commons Attribution License (CC BY). The use, distribution or reproduction in other forums is permitted, provided the original author(s) and the copyright owner(s) are credited and that the original publication in this journal is cited, in accordance with accepted academic practice. No use, distribution or reproduction is permitted which does not comply with these terms.