



# Monitoring Immune Checkpoint Regulators as Predictive Biomarkers in Hepatocellular Carcinoma

Ritu Shrestha<sup>1,2</sup>, Prashanth Prithviraj<sup>3</sup>, Matthew Anaka<sup>4</sup>, Kim R. Bridle<sup>1,2</sup>, Darrell H. G. Crawford<sup>1,2</sup>, Bijay Dhungel<sup>1,2</sup>, Jason C. Steel<sup>1,2†</sup> and Aparna Jayachandran<sup>1,2\*†</sup>

<sup>1</sup> Faculty of Medicine, The University of Queensland, Brisbane, QLD, Australia, <sup>2</sup> Gallipoli Medical Research Institute, Greenslopes Private Hospital, Brisbane, QLD, Australia, <sup>3</sup> Fiona Elsey Cancer Research Institute, Ballarat, VIC, Australia, <sup>4</sup> Department of Medicine, University of Alberta, Edmonton, AB, Canada

## OPEN ACCESS

### Edited by:

Peternel Theresa Ferrao,  
University of Melbourne, Australia

### Reviewed by:

Luca Quagliata,  
Universitätsspital Basel, Switzerland  
Pin Wu,  
Zhejiang University, China

### \*Correspondence:

Aparna Jayachandran  
a.jayachandran@uq.edu.au

<sup>†</sup>These authors have contributed  
equally to this work.

### Specialty section:

This article was submitted  
to Cancer Immunity  
and Immunotherapy,  
a section of the journal  
Frontiers in Oncology

**Received:** 15 March 2018

**Accepted:** 29 June 2018

**Published:** 13 July 2018

### Citation:

Shrestha R, Prithviraj P, Anaka M,  
Bridle KR, Crawford DHG,  
Dhungel B, Steel JC and  
Jayachandran A (2018)  
Monitoring Immune  
Checkpoint Regulators as  
Predictive Biomarkers in  
Hepatocellular Carcinoma.  
Front. Oncol. 8:269.  
doi: 10.3389/fonc.2018.00269

The global burden of hepatocellular carcinoma (HCC), one of the frequent causes of cancer-related deaths worldwide, is rapidly increasing partly due to the limited treatment options available for this disease and recurrence due to therapy resistance. Immune checkpoint inhibitors that are proved to be beneficial in the treatment of advanced melanoma and other cancer types are currently in clinical trials in HCC. These ongoing trials are testing the efficacy and safety of a few select checkpoints in HCC. Similar to observations in other cancers, these immune checkpoint blockade treatments as monotherapy may benefit only a fraction of HCC patients. Studies that assess the prevalence and distribution of other immune checkpoints/modulatory molecules in HCC have been limited. Moreover, robust predictors to identify which HCC patients will respond to immunotherapy are currently lacking. The objective of this study is to perform a comprehensive evaluation on different immune modulators as predictive biomarkers to monitor HCC patients at high risk for poor prognosis. We screened publically available HCC patient databases for the expression of previously well described immune checkpoint regulators and evaluated the usefulness of these immune modulators to predict high risk, patient overall survival and recurrence. We also identified the immune modulators that synergized with known immune evasion molecules programmed death receptor ligand-1 (PD-L1), programmed cell death protein-1 (PD-1), and cytotoxic T lymphocyte-associated antigen-4 (CTLA-4) and correlated with worse patient outcomes. We evaluated the association between the expression of epithelial-to-mesenchymal transition (EMT) markers and PD-L1 in HCC patient tumors. We also examined the relationship of tumor mutational burden with HCC patient survival. Notably, expression of immune modulators *B7-H4*, *PD-L2*, *TIM-3*, and *VISTA* were independently associated with worse prognosis, while *B7-H4*, *CD73*, and *VISTA* predicted low recurrence-free survival. Moreover, the prognosis of patients expressing high *PD-L1* with high *B7-H4*, *TIM-3*, *VISTA*, *CD73*, and *PD-L2* expression was significantly worse. Interestingly, *PD-L1* expression in HCC patients in the high-risk group was closely associated with EMT marker expression and prognosticates poor survival. In HCC patients, high tumor mutational burden (TMB) predicted worse patient outcomes than those with low TMB.

**Keywords:** hepatocellular carcinoma, epithelial-to-mesenchymal transition, immune checkpoints, programmed death receptor ligand-1, immune modulation

## INTRODUCTION

Hepatocellular carcinoma (HCC), also known as malignant hepatoma, is the most common form of primary liver malignancy and the third most common cause of cancer-related deaths worldwide (1–3). It is a multifactorial disease with viral hepatitis and excessive alcohol intake being the major risk factors globally (4). Non-alcoholic fatty liver, diabetes, aflatoxins, and immune-related conditions like autoimmune hepatitis and primary biliary cirrhosis are other common risk factors for HCC (5). HCC is predominant in patients with underlying chronic liver diseases and cirrhosis which limits treatment options for these patients (6, 7). Although surgical resection is useful in the early stages of HCC without cirrhosis recurrence continues to be a significant problem in the majority of patients (8). Liver transplantation, an alternate therapy for unresectable HCC with underlying cirrhosis, has not been very effective due to lack of compatible livers (9). Moreover, HCC is usually diagnosed at late stages such that surgical resections and liver transplantation cannot be used, leading to poor survival rate (10). Sorafenib, the systemic treatment currently approved for the treatment of advanced disease yields a sub-optimal improvement in median survival of 6.5–10.7 months in HCC patients with good liver function (11, 12). Therefore, new therapies are urgently needed for this disease.

Immunotherapy is an emerging therapeutic modality that could become a promising treatment option for HCC as, first, HCC is an inflammation-associated cancer making immunotherapy more likely to be effective (13). Second, the liver is an immune privileged organ, and thus immunotherapeutic drugs are not metabolized in the liver and have predictable pharmacokinetic profiles in cirrhotic patients (13). Third, the liver is tolerogenic to immune response to antigens that is balanced by naïve T-cell activation and further by various immunosuppressive mechanisms, including dysregulation in cytokine secretion, antigen and immune checkpoint expression, and changes in the local immune microenvironment (10, 14, 15). The clinical successes of immunotherapy in the form of immune checkpoint inhibitor (ICI) for the treatment of a number of malignancies including advanced melanoma, have opened prospects for ICIs as the potential immunotherapeutic strategy for treating HCC (16, 17).

The immune response is coordinated by a harmony between co-stimulatory and inhibitory signals (18). The activated T-cell is regulated by co-inhibitory immune checkpoint molecules, such as cytotoxic T lymphocyte-associated antigen-4 (CTLA-4), programmed cell death protein-1 (PD-1), and its ligand programmed death receptor ligand-1 (PD-L1/B7H1/CD274), all of which are responsible for maintenance of self-tolerance and prevent immune overstimulation (13, 18). The T-cell effector functions regulated by the immune checkpoint interactions are

generally dysregulated or overexpressed in the tumor micro-environment leading to T-cell inhibition and downregulation of T-cell response. Thus, the blockade of immune checkpoints (co-inhibitory signals) or promotion of co-stimulatory signals can restore or amplify the antigen-specific T-cell responses for cancer therapeutics (18).

A recent phase I/II trial of nivolumab (anti-PD-1) has shown it to have an effective anticancer activity with an adequate safety profile in HCC patients (19). However, in another HCC clinical trial, the use of anti-CTLA-4 antibody in HCC resulted in more adverse events compared to anti PD-1 antibodies (20). Currently, there are several ongoing clinical trials with a small number of ICIs directed at PD-1 (nivolumab and pembrolizumab) and PD-L1 (atezolizumab) in HCC (18, 19). Given that a few genes, such as PD-1, PD-L1, and CTLA-4 enable tumors to bypass the immune system, this strategy alone may not be effective in achieving sustained clinical response in most cancer patients and further immunotherapeutic strategies are needed (21). The identification of predictive markers is of the utmost importance in this clinical setting to select a subgroup of HCC patients who are most likely to benefit from ICI therapy. Furthermore, the morphogenetic process of epithelial-to-mesenchymal transition (EMT) characterized by the acquisition of mesenchymal properties such as invasion and metastasis of tumor cells is closely linked to immune evasion of cancer cells (22, 23). Emerging evidence supports the close association of EMT status with response to multiple immune checkpoint regulators in a large number of patient tumors (24). One such report has revealed that EMT suppresses antitumor immunity through upregulation of PD-L1 in pulmonary cancer (25). However, no studies have compared the EMT markers and immune checkpoint molecule expression in HCC tumors.

With the goal of identifying prognostic immune-related molecules in HCC, we conducted a study of immune-related molecules and correlated their expression with patient prognosis in publically available HCC patient databases by deploying SurvExpress web-based platform that provides risk assessment and survival analysis in cancer datasets (26). We also assessed the relationship between the expression of immune-related molecules and EMT status of HCC cancers using this web-based tool.

## MATERIALS AND METHODS

### OncoPrint Analysis of Immune Checkpoints Using cBioPortal

We used the cBioPortal's OncoPrint<sup>1</sup> across HCC patient samples to obtain a compact graphical summary of gene expression alterations in immune modulatory genes. We applied cBioPortal to study gene alterations in immune modulatory genes in Liver HCC (TCGA Provisional) case set. Genomic alterations, including copy number alterations (CNAs) (amplifications and homozygous deletions), mutations, and alterations in gene or protein expressions are summarized by glyphs and color coding. All cases are arranged as per alterations (27).

<sup>1</sup><http://cbioportal.org>.

**Abbreviations:** HCC, hepatocellular carcinoma; ICI, immune checkpoint inhibitor; PD-1, programmed cell death protein 1; PD-L1, programmed death receptor ligand-1; CTLA-4, cytotoxic T lymphocyte-associated antigen-4; EMT, epithelial-to-mesenchymal transition; PI, prognostic index; VTCN1, V-set domain-containing T-cell activation inhibitor 1; BTLA, B and T lymphocyte attenuator; VISTA, V-domain immunoglobulin suppressor of T cell activation; NT5E, ecto-5'-nucleotidase; TIM-3, T-cell immunoglobulin and mucin domain-containing-3.

## HCC Patient Databases

We used SurvExpress, an online tool with a gene expression database of various cancer types to generate survival and risk assessment analyses of HCC patient datasets.<sup>2</sup> SurvExpress provided six HCC databases, including, Hoshida Golub Liver GSE10143 with 162 patient samples, Hoshida Golub Liver GSE10186 with 118 patient samples, Tsuchiya Rusyn Liver GSE17856 with 95 patient samples, TCGA-Liver-Cancer with 422 patient samples, LIHC-TCGA-Liver HCC June 2016 with 361 patient samples, and Liver HCC TCGA database with 12 patient samples (28–30).

## Performing Risk Analysis in HCC Patients

SurvExpress utilized prognostic index (PI) or risk score, the linear part of the Cox model, to generate high-risk and low-risk groups. SurvExpress generates risk groups for risk assessment as previously described (26). Briefly, the first method splits ordered PI into two risk groups with equal number of samples equivalent to splitting the PI by the median (26). The second method uses an optimization algorithm from the ordered PI to produce risk groups (26). A log-rank test is performed along all values of the arranged PI for two groups and the split point where the *p*-value is minimum is selected by the algorithm (26). In case of more than two groups, the procedure optimizes one risk group at a time repeatedly until no changes are seen (26). The gene expression box plots of each gene and risk group are generated by SurvExpress (26).

## Validation of the Prognostic Effect of Immune Regulatory Molecules in HCC Patients

Using the SurvExpress online tool, we assessed the gene expression of 19 different immune modulators and analyzed their association with the survival of HCC patients (Cox regression analyses) in five databases (GSE10143, GSE10186, and the three TCGA datasets) with patient survival information. We also assessed the correlation of immune checkpoint molecules with recurrence-free survival in two databases (GSE10143 and TCGA-Liver-Cancer) with patient recurrence-free survival information. For HCC patients, Kaplan–Meier curves were used to estimate the survival times for overall survival and recurrence-free survival. The settings we selected for this study for duplicated genes was average of all probe sets of a gene to compute an average per sample and we used the original quantile-normalized database.

## Analysis of Tumor Mutational Burden (TMB) in HCC Patients

Data on the number of mutations per sample were obtained using cBioportal for all HCCs with available survival from the provisional TCGA data set. Tumors were classified as “high mutation burden” if they had a quantity of mutations one standard deviation above the average for the dataset. Kaplan–Meier plots were generated and log-rank tests were used to determine statistical significance.

<sup>2</sup><http://bioinformatica.mty.itesm.mx/SurvExpress>.

## GeneCards Analysis for Expression of Immune Checkpoints

GeneCards is a database that provides comprehensive information on all annotated and predicted human genes (31).<sup>3</sup> GeneCards online portal was used to study protein expression of immune modulators in normal hepatocytes.

## Immunohistochemistry and Pathological Evaluation

Immunohistochemistry was performed as previously described (32). Briefly, paraffin embedded tissue slides with human HCC tissue microarray (TMA) (NBP2-30221, Novus Biologicals) were deparaffinized and rehydrated, endogenous peroxidase activity was blocked with 3% hydrogen peroxide, antigen retrieval was performed in 10 mmol/L citrate buffer, and nonspecific binding was blocked with blocking reagent. HAVCR2 (ab185703, Abcam) and C10ORF54 (CL3975, Invitrogen) antibodies were applied at 1:300 and 1:20 concentrations, respectively. Slides were incubated overnight at 4°C, followed by 30 min incubation with secondary anti-mouse or rabbit antibody HRP (Dako). The chromogen used was 3-amino-9-ethylcarbazole. Human normal and cancerous lung tissue was used as the positive control for both the antibodies and a negative control, for which the primary antibodies were substituted with the same concentration of mouse or rabbit IgG. Images were captured using a Olympus CX41 microscope and QCapture software. Immunohistochemical reactivity was evaluated by two independent investigators. The expression of HAVCR2 and C10ORF54 were categorized into positive staining or no staining.

## Statistical Analysis

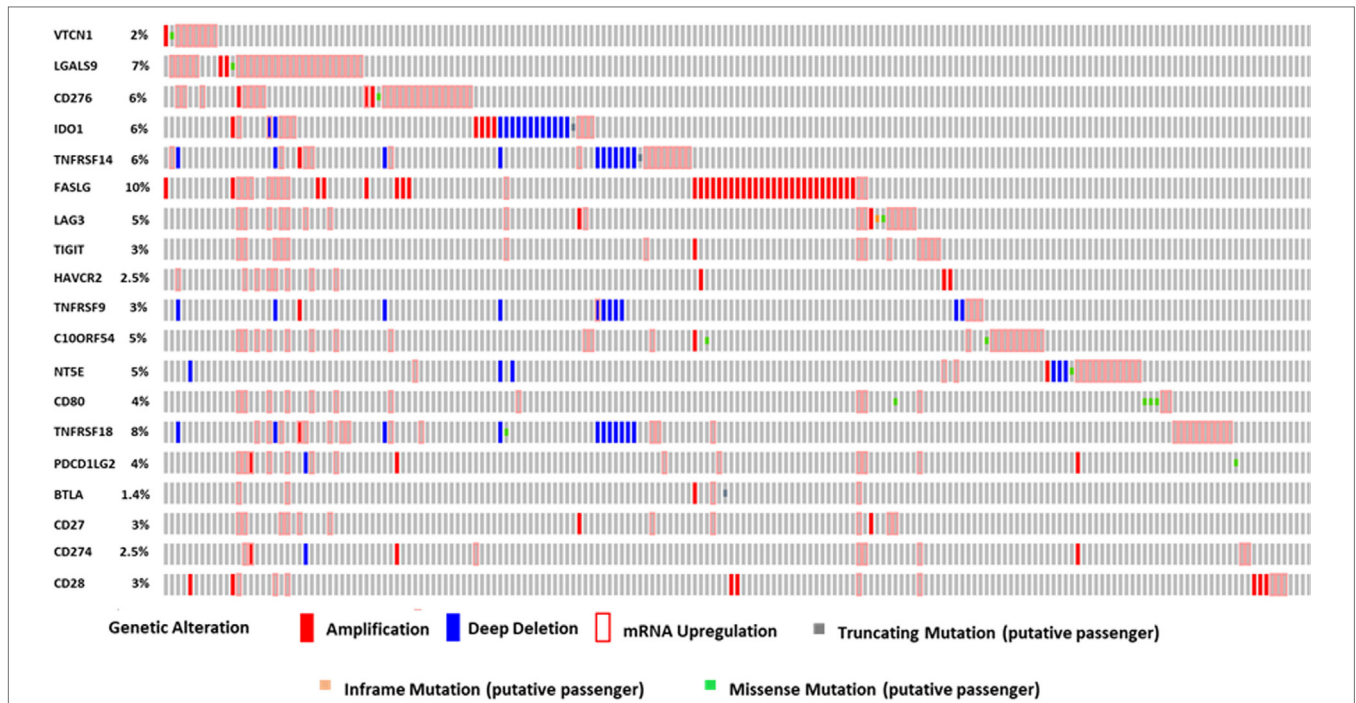
For risk assessment generated by SurvExpress, a *p*-value of the difference in expression among risk groups is obtained from a Student's *t*-test for two risk groups. A log-rank test was used to produce the concordance index and the *p*-value testing for equality of survival curves for survival analysis using SurvExpress, and the correlation coefficient estimated from deviance residuals (33). In addition, an estimation of the hazard ratio (HR) between the groups is generated. This is estimated by another Cox model using the risk group prediction as the covariate.

## RESULTS

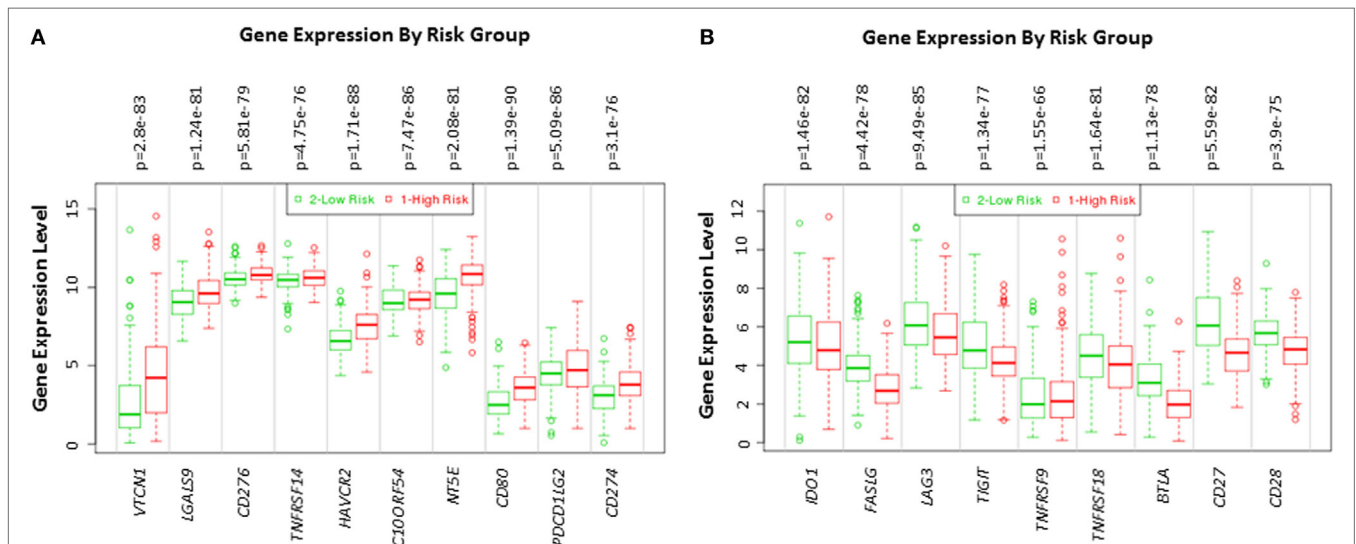
### The Alterations in Immune Modulatory Genes in HCC

To identify immune modulatory molecules involved in immune escape in HCC, we assessed a panel of 19 genes based on previous studies on immune modulatory genes linked with overall survival and progression-free survival in different cancers. These included those associated with immune stimulatory genes, such as *CD80*, *CD28*, *CD27*, *GITR* (*TNFRSF18*), *Galectin-9* (*LGALS9*), *CD137* (*TNFRSF9*), *FASLG*, and immune inhibitory genes, such as *TIM3* (*HAVCR2*), *B7-H4* (*VTCN1*), *B7-H3* (*CD276*),

<sup>3</sup><http://www.genecards.org/>.



**FIGURE 1** | The OncoPrint from a query for alterations in expression of immune modulator genes in HCC patients. Rows and columns represents genes and patients, respectively. Genomic alterations, including CNAs (homozygous deletions and amplifications), mutations, and variation in gene or protein expression are summarized by glyphs and color coding. The cases are sorted as per alterations.



**FIGURE 2** | Gene expression of immune modulators in HCC patients based on risk group. Box plot of gene expression of (A) immune modulators that statistically correlate with high-risk prognostic score and (B) immune modulators that statistically correlates with low-risk prognostic score in 422 HCC patients from the TCGA-Liver Cancer dataset. Risk assessed is risk of reduced survival. Red box represents high-risk group and green box represents low-risk group. Each gene is shown on the x-axis. X-axis also shows a p-value of the expression difference between the two risk groups. The expression levels are shown on the y-axis.

B and T lymphocyte attenuator (*BTLA*), *HVEM* (*TNFRSF14*), *PD-L1* (*CD274*), *PD-L2* (*PDCD1LG2*), *LAG-3*, *VISTA* (*C10ORF54*), *CD73* (*NT5E*), *IDO-1*, *TIGIT*.

We performed OncoPrint analysis using cBioPortal to interrogate the expression profiles and any possible genetic alterations for these immune modulatory molecules in tumors

of HCC patients ( $n = 440$ ). An OncoPrint is a concise and compact graphical summary of genomic alterations in multiple genes across a set of tumor samples. From the OncoPrint, of the 440 HCC cases, amplification and mRNA upregulation were identified in *FASLG*, *TIGIT*, *HAVCR2*, *CD27*, and *CD28* in 45 cases (10%), 15 cases (3%), 11 cases (2.5%), 13 cases (3%), and 15 cases (3%), respectively (**Figure 1**). Amplification, deep deletion, and mRNA upregulation were identified in *TNFRSF9* and *CD274* in 15 cases (3%) and 11 cases (2.5%), respectively.

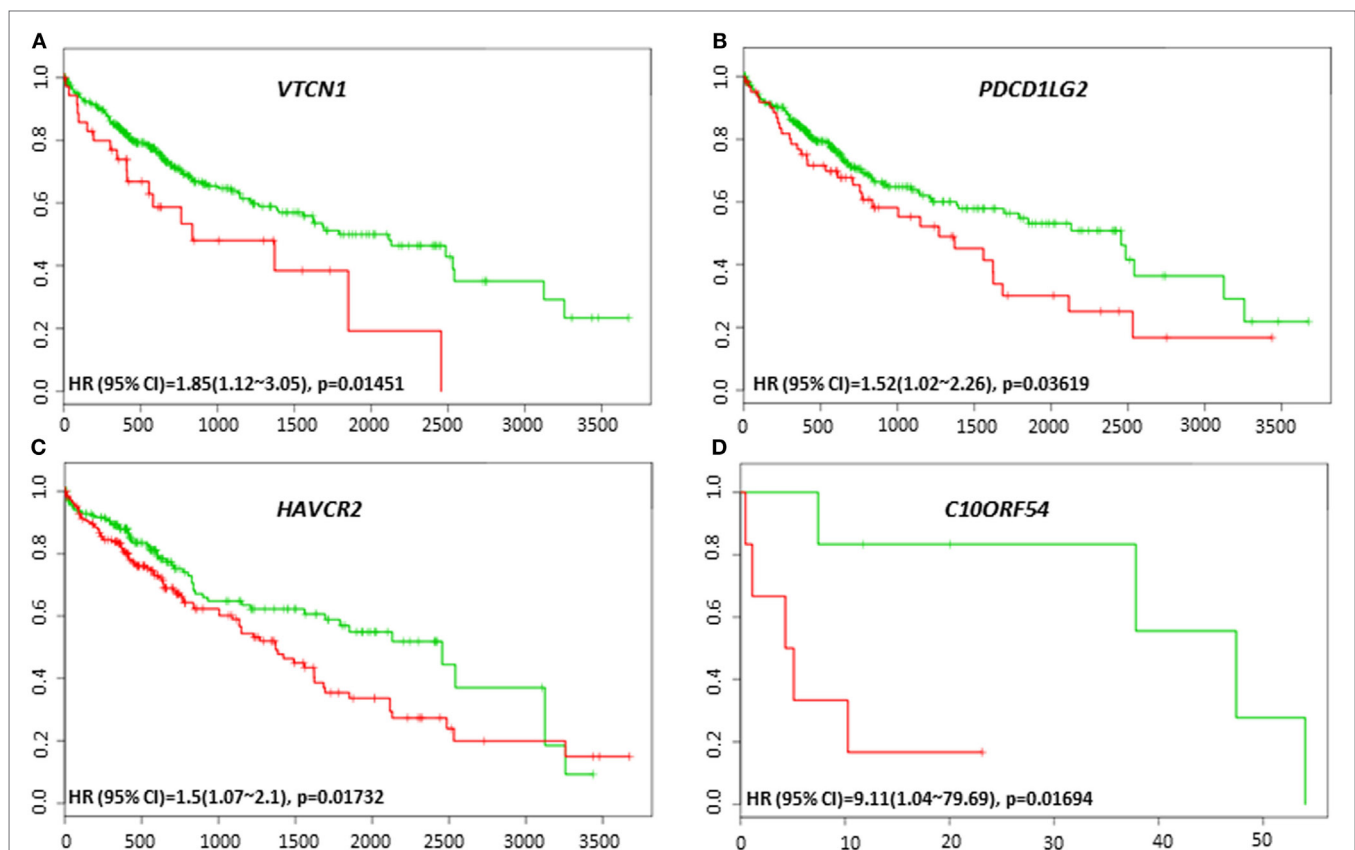
**TABLE 1** | Risk assessment of high versus low-risk.

| High expression in high-risk group | Low expression in high-risk group |
|------------------------------------|-----------------------------------|
| <i>B7-H4</i>                       | <i>IDO-1</i>                      |
| <i>LGALS9</i>                      | <i>FASLG</i>                      |
| <i>B7-H3</i>                       | <i>LAG-3</i>                      |
| <i>TNFRSF14</i>                    | <i>TIGIT</i>                      |
| <i>TIM-3</i>                       | <i>TNFRSF9</i>                    |
| <i>VISTA</i>                       | <i>TNFRSF18</i>                   |
| <i>NT5E</i>                        | <i>BTLA</i>                       |
| <i>CD80</i>                        | <i>CD27</i>                       |
| <i>PD-L2</i>                       | <i>CD28</i>                       |
| <i>PD-L1</i>                       |                                   |

In **Figure 1**, amplification, mRNA upregulation and missense mutation were noted in 24 cases (5%) for *C10ORF54*, 9 cases (2%) for *VTCN1*, 29 cases (7%) for *LGALS9*, and 26 cases (6%) for *CD276*. Amplification, deep deletion, mRNA upregulation, and missense mutation were identified in *NT5E* [22 cases (5%)], *TNFRSF18* [35 cases (8%)], and *PD-L2* [16 cases (4%)]. Amplification, deep deletion, mRNA upregulation, and truncating mutation were noted in *IDO1* [27 cases (6%)] and *TNFRSF14* [27 cases (6%)]. Furthermore, amplification, mRNA upregulation, inframe mutation, and missense mutation were observed in *LAG3* [20 cases (5%)]. Amplification, mRNA upregulation, and truncating mutation were identified in *BTLA* in 6 cases (1.4%). While 17 cases (4%) for *CD80* showed both mRNA upregulation and missense mutation (**Figure 1**).

### Immune Modulatory Genes Are Aberrantly Expressed in Human HCC Tumors

Using SurvExpress we examined transcriptome profiling studies to produce high-risk versus low-risk HCC signatures. Based on transcriptome profiles of the TCGA-Liver-Cancer patient dataset, the clustering analysis differentiated a total of 422 HCC patient



**FIGURE 3** | Relationship of immune modulators and survival in HCC patients. Kaplan-Meier survival curves from SurvExpress for the analysis of survival and gene expression of (A) *VTCN1*, (B) *PDCD1LG2*, (C) *HAVCR2*, and (D) *C10ORF54* in HCC patient samples. Green curve represents low-risk group while red curve represents high-risk group. The study time (months) is presented in the x-axis. The insert shows the hazard ratio, confidence interval, and Log-Rank Equal Curves  $p$  value. Markers (+) represent censoring samples.

samples into high-risk and low-risk groups. Box plot was generated in the results of SurvExpress, where the gene expression per gene is plotted along its risk groups. This plot is useful to visualize differences in gene expression values between high and low-risk groups.

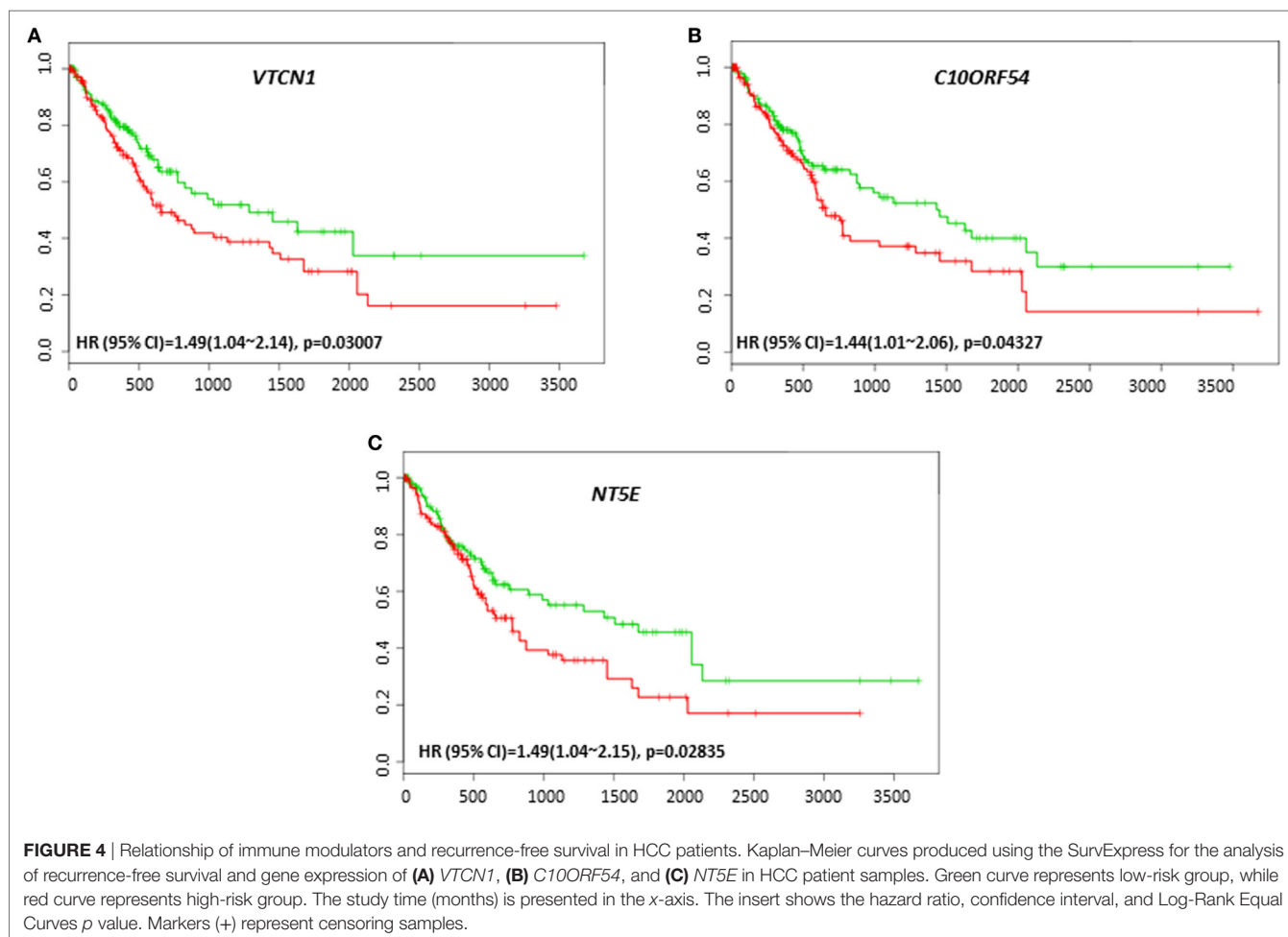
The expression of *VTCN1*, *LGALS9*, *CD276*, *TNFRSF14*, *HAVCR2*, *C10ORF54*, *NT5E*, *CD80*, *PDCD1LG2*, and *CD274* genes statistically significantly correlates with high-risk signature ( $p < 0.05$ ) (Figure 2A). Immune-related genes *IDO-1*, *FASLG*, *LAG-3*, *TIGIT*, *TNFRSF9*, *TNFRSF18*, *BTLA*, *CD27*, and *CD28* expression significantly correlates with low-risk signatures ( $p < 0.05$ ) (Figure 2B). Risk assessed in this study was reduced survival. Risk assessment of high versus low-risk for all six HCC patient datasets are depicted in Table 1.

## Immune Biomarkers Prognosticates Clinical Outcome in HCC Patients

The lack of robust predictive biomarkers to monitor HCC patients at high risk for poor prognosis has been a major obstacle in the clinics. To investigate whether the immune-related genes have prognostic and predictive value in HCC, we utilized six different HCC datasets within SurvExpress to examine the overall survival

and recurrence-free survival in HCC patients. Kaplan–Meier survival risk curves for the different immune genes were generated. Notably, altered expression of *VTCN1* [HR: 1.85, 95% confidence interval (CI): 1.12~3.05, Log-Rank Equal Curves  $p = 0.01451$ ] and *PDCD1LG2* (HR: 1.52, 95% CI: 1.02~2.26, Log-Rank Equal Curves  $p = 0.03619$ ) in the TCGA HCC 361 patient cohort was associated with worse overall survival (Figures 3A,B). In the TCGA Liver Cancer 422 patient cohort, *HAVCR2* (HR: 1.5, 95% CI: 1.07~2.1, Log-Rank Equal Curves  $p = 0.01732$ ) expression in high-risk group correlated with low overall survival (Figure 3C). In TCGA 12 HCC patients, *C10ORF54* expression correlated with worse survival (HR: 9.11, CI = 1.04~79.69,  $p = 0.01694$ ) (Figure 3D).

To investigate the possible roles of immune genes in HCC relapse, we assessed the relationships between their gene expression level and recurrence-free survival using SurvExpress. We observed that *VTCN1* expression, which correlated with poor survival was also associated with poor recurrence-free survival in the cohort of TCGA 422 patients (HR: 1.49, CI: 1.04~2.14, Log-Rank Equal Curves  $p = 0.03007$ ) (Figure 4A). *C10ORF54* expression also correlated with low recurrence-free survival in the same cohort of 422 patients (HR: 1.44, CI: 1.01~2.06, Log-Rank Equal Curves  $p = 0.04327$ ) (Figure 4B). This cohort also showed that



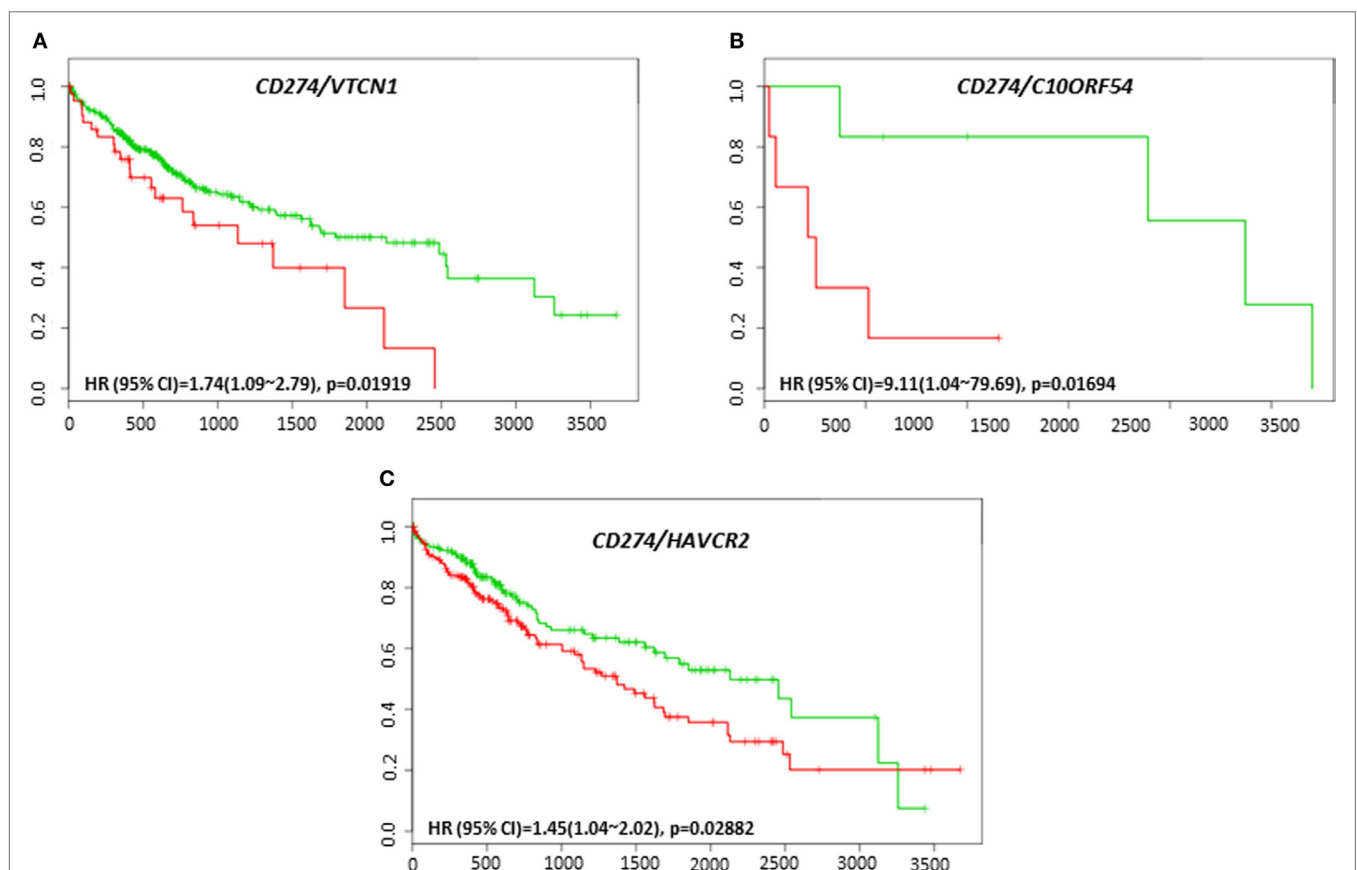
*NT5E* expression correlated with poor recurrence-free survival (HR: 1.49, CI: 1.04~2.15, Log-Rank Equal Curves  $p = 0.02835$ ) (Figure 4C).

### Coordinate Expression of PD-L1 (CD274), PD-1, and CTLA-4 and Immune Modulatory Genes in HCC

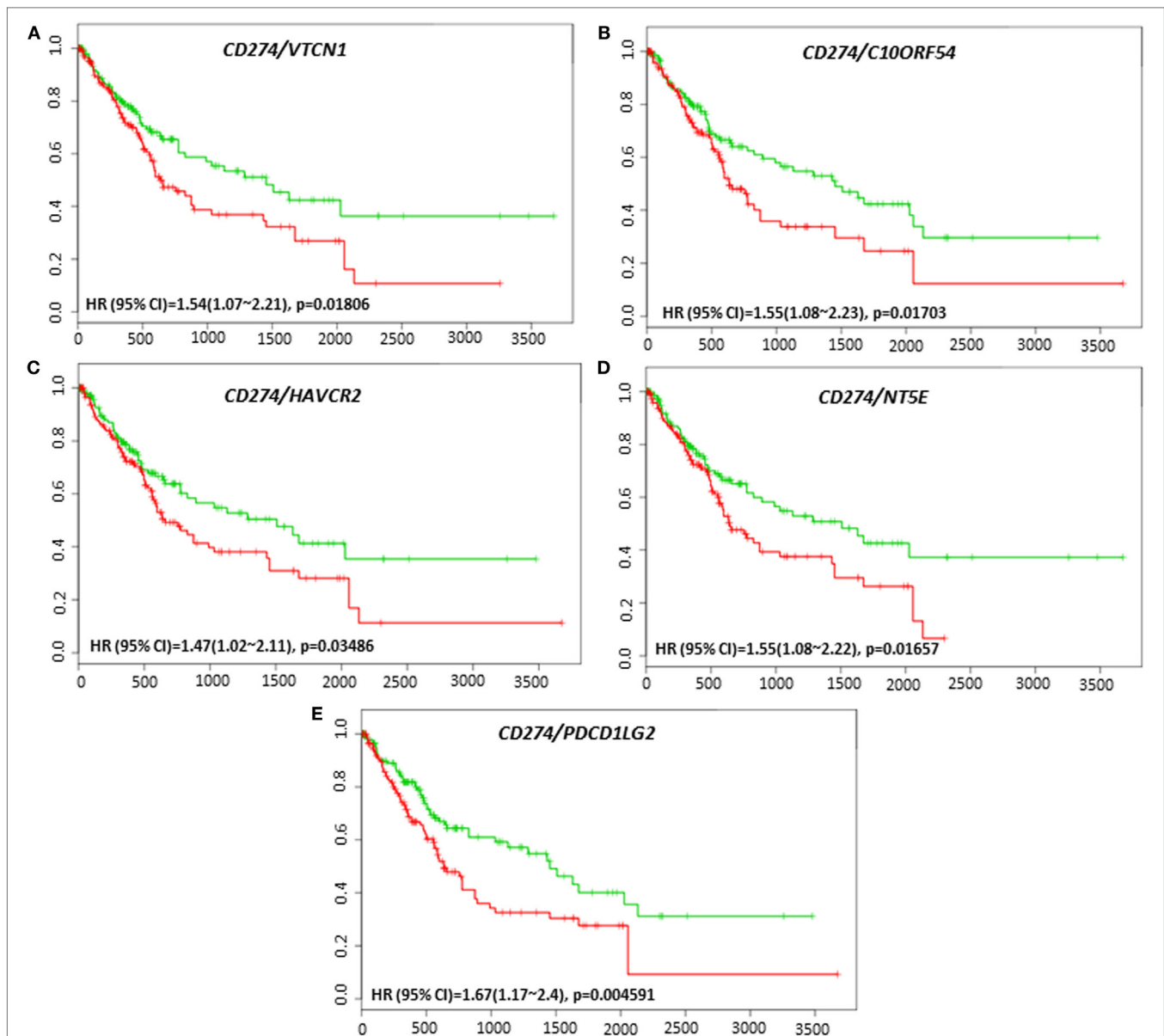
The clinical response to anti-PD-L1, anti-PD-1, or anti-CTLA-4 targeted therapies can vary in different tumor types, and much effort has been directed toward finding predictive biomarkers to help identify patients who will derive the most benefit from these therapies. In HCC, the coordinated expression of other immune regulators with PD-L1, PD-1, and CTLA-4 in tumor tissue have been less well-studied. The overall survival and recurrence-free survival of immune modulators were analyzed in combination with PD-L1, PD-1, and CTLA-4 to assess any additional benefit through the combination. *PD-L1*, *PD-1*, or *CTLA-4* gene expression alone did not show poor survival in HCC patient datasets. However, coordinate expression of *VTCN1* (HR: 1.74, CI: 1.09~2.79, Log-Rank Equal Curves  $p = 0.01919$ ), *C10ORF54*

(HR: 9.11, CI: 1.04~79.69, Log-Rank Equal Curves  $p = 0.01694$ ), and *HAVCR2* (HR: 1.45, CI: 1.04~2.02, Log-Rank Equal Curves  $p = 0.02882$ ) showed significant overall worse survival when combined with *PD-L1* (CD274) (Figures 5A–C). *VTCN1* (HR: 1.54, CI: 1.07~2.21, Log-Rank Equal Curves  $p = 0.01806$ ), *C10ORF54* (HR: 1.55, CI: 1.08~2.23, Log-Rank Equal Curves  $p = 0.01703$ ), *HAVCR2* (HR: 1.47, CI: 1.02~2.11, Log-Rank Equal Curves  $p = 0.03486$ ), *NT5E* (HR: 1.55, CI: 1.08~2.22, Log-Rank Equal Curves  $p = 0.01657$ ), and *PDCD1LG2* (HR: 1.67, CI: 1.17~2.4, Log-Rank Equal Curves  $p = 0.004591$ ) showed significant recurrence-free survival benefit when combined with *PD-L1* (Figures 6A–E).

Coordinate expression of *VTCN1* (HR: 1.68, CI: 1.19~2.35, Log-Rank Equal Curves  $p = 0.002457$ ), *HAVCR2* (HR: 2.2, CI: 1.54~3.14, Log-Rank Equal Curves  $p = 8.04E-06$ ), *NT5E* (HR: 1.49, CI: 1.06~2.08, Log-Rank Equal Curves  $p = 0.0198$ ), *LGALS9* (HR: 1.87, CI: 1.33~2.63, Log-Rank Equal Curves  $p = 0.0002385$ ), and *CD80* (HR: 1.64, CI: 1.17~2.31, Log-Rank Equal Curves  $p = 0.003752$ ) showed significant overall worse survival when combined with *PD-1* (*PDCD1*) (Figures 7A–E). In combination with *PD-1*, *VTCN1* (HR: 1.67, CI: 1.16~2.41,



**FIGURE 5** | Relationship of immune modulators in combination with PD-L1 (CD274) and survival in HCC patients. Kaplan-Meier survival curves generated using the SurvExpress for the analysis of survival and gene expression of (A) *CD274/VTCN1*, (B) *CD274/C10ORF54*, and (C) *CD274/HAVCR2* in HCC patient samples. Green curve represents low-risk group, while red curve represents high-risk group. The study time (months) is presented in the x-axis. The insert shows the hazard ratio, confidence interval, and Log-Rank Equal Curves  $p$  value. Markers (+) represent censoring samples.



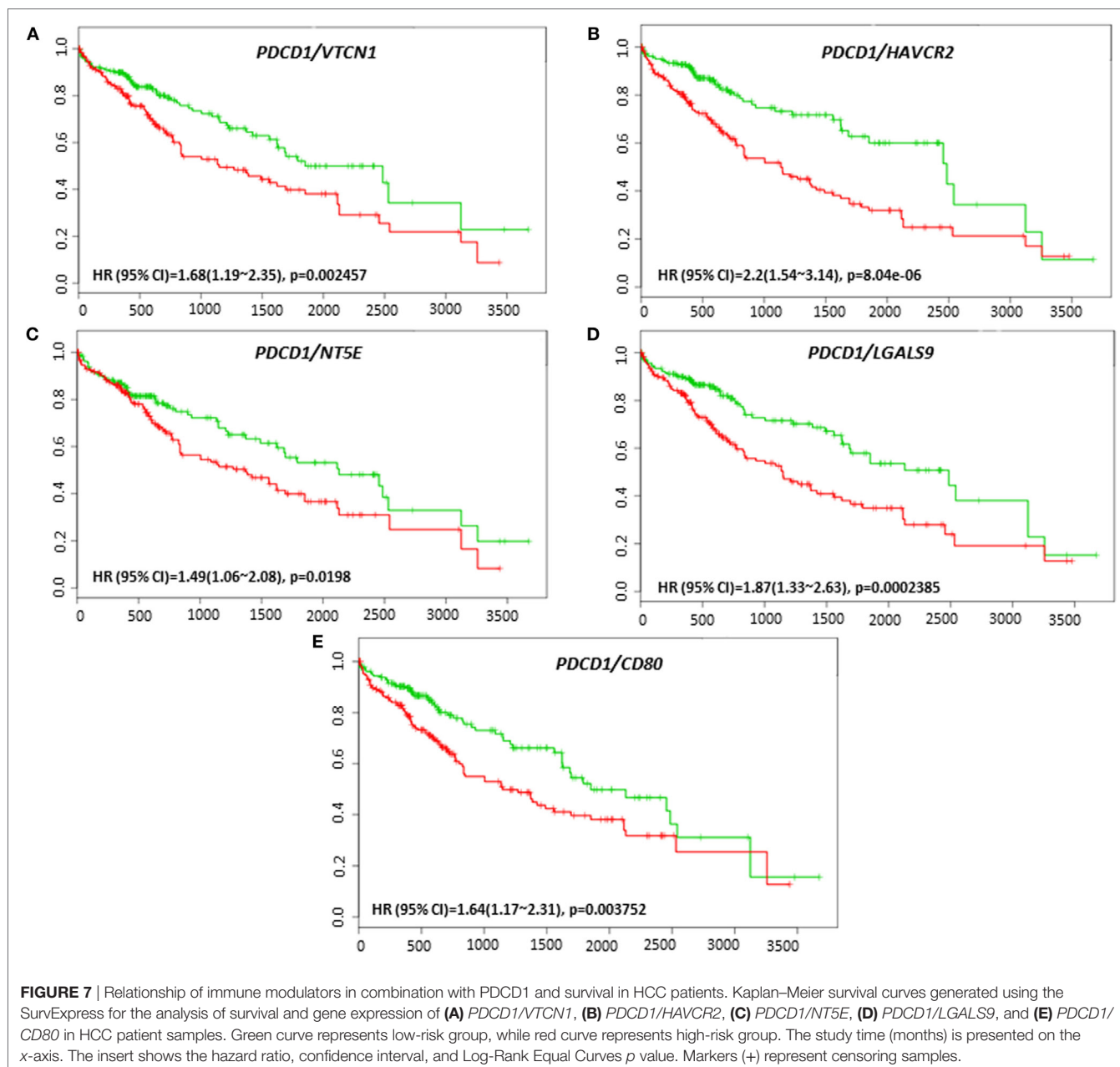
**FIGURE 6** | Relationship of immune modulators in combination with PD-L1 (CD274) and recurrence-free survival in HCC patients. Kaplan–Meier curves produced using the SurvExpress for the analysis of recurrence-free survival and gene expression of **(A)** *CD274/VTCN1*, **(B)** *CD274/C10ORF54*, **(C)** *CD274/HAVCR2*, **(D)** *CD274/NT5E*, and **(E)** *CD274/PDCD1LG2* in HCC patient samples. Green curve represents low-risk group, while red curve represents high-risk group. The study time (months) is presented in the x-axis. The insert shows the hazard ratio, confidence interval, and Log-Rank Equal Curves *p* value. Markers (+) represent censoring samples.

Log-Rank Equal Curves  $p = 0.004838$ ), *C10ORF54* (HR: 1.73, CI: 1.21~2.49, Log-Rank Equal Curves  $p = 0.002575$ ), *HAVCR2* (HR: 1.56, CI: 1.08~2.24, Log-Rank Equal Curves  $p = 0.01547$ ), *TNFRSF14* (HR: 1.56, CI: 1.09~2.24, Log-Rank Equal Curves  $p = 0.01349$ ), and *CD80* (HR: 1.53, CI: 1.07~2.19, Log-Rank Equal Curves  $p = 0.01881$ ) showed significant recurrence-free survival (**Figures 8A–E**).

*VTCN1* (HR: 1.51, CI: 1.08~2.12, Log-Rank Equal Curves  $p = 0.01558$ ), *HAVCR2* (HR: 1.79, CI: 1.26~2.53, Log-Rank Equal Curves  $p = 0.0008991$ ), *LGALS9* (HR: 1.59, CI: 1.13~2.23,

Log-Rank Equal Curves  $p = 0.006334$ ), and *TNFRSF14* (HR: 1.5, CI: 1.07~2.1, Log-Rank Equal Curves  $p = 0.01669$ ) showed significant overall worse survival when combined with *CTLA-4* (**Figures 9A–D**). Coordinate expression of *CTLA-4* with *VTCN1* (HR: 1.89, CI: 1.31~2.72, Log-Rank Equal Curves  $p = 0.0004903$ ), *C10ORF54* (HR: 1.6, CI: 1.11~2.3, Log-Rank Equal Curves  $p = 0.01011$ ), *NT5E* (HR: 1.52, CI: 1.06~2.18, Log-Rank Equal Curves  $p = 0.02093$ ), *HAVCR2* (HR: 1.7, CI: 1.18~2.43, Log-Rank Equal Curves  $p = 0.003638$ ), *LGALS9* (HR: 1.59, CI: 1.13~2.23, Log-Rank Equal Curves  $p = 0.006334$ ), and





*TNFRSF14* (HR: 1.45, CI: 1.01~2.08, Log-Rank Equal Curves  $p = 0.04071$ ) showed significant recurrence-free survival (Figures 10A–F).

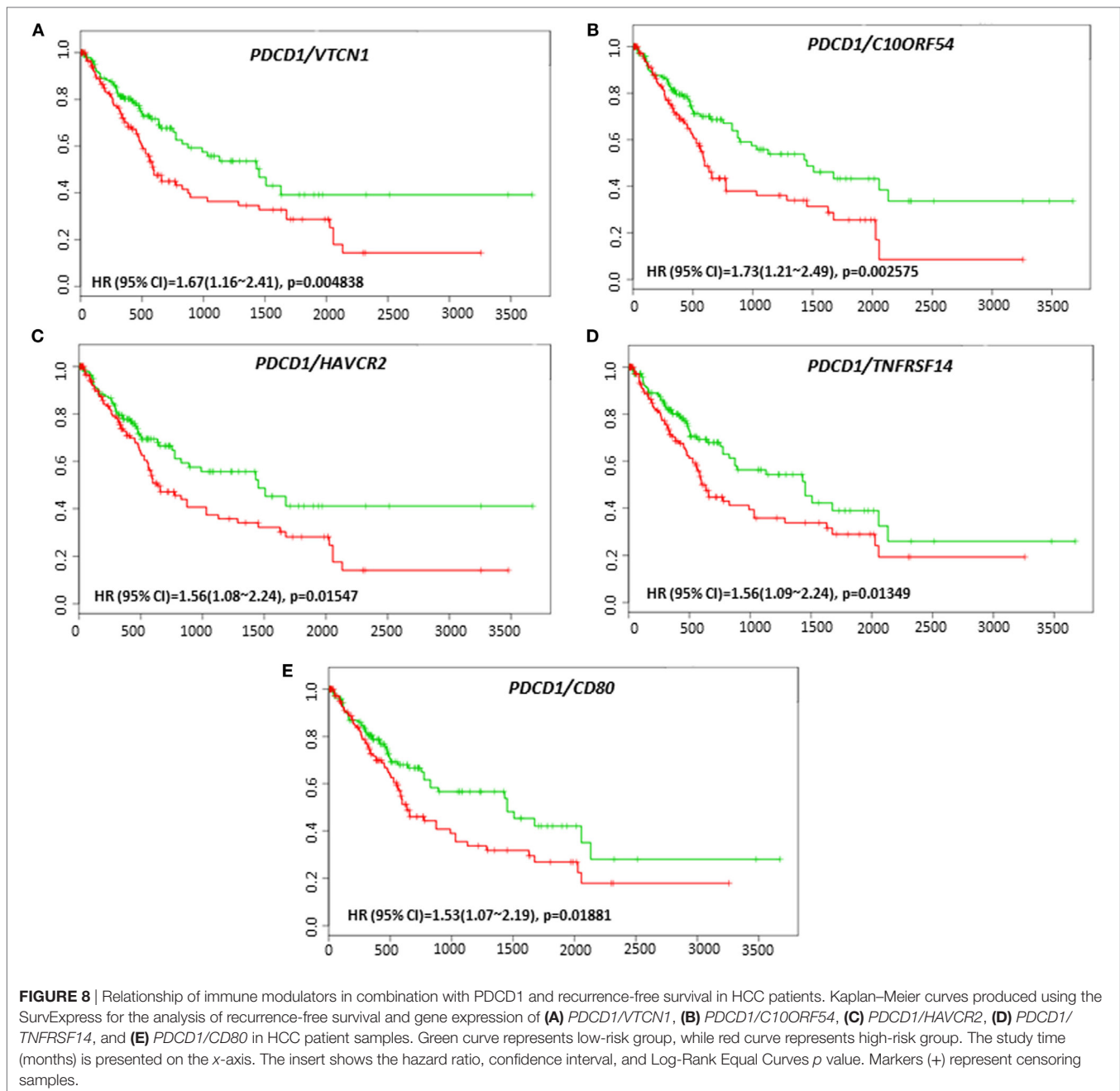
### HAVCR2 and C10ORF54 Is Expressed in HCC Patient Tumors

We next validated the protein expression of HAVCR2 and C10ORF54, two immune markers associated with poor survival in HCC patients in combination with either PD-L1, PD-1, or CTLA-4. Protein expression patterns in HCC tumors were determined by immunohistochemical staining of a TMA comprising of tumors from 36 patients with stage I, II, III, IIIB, IVA, and

IVB HCC. HAVCR2 expression was detected in 88% of HCC patient tumors (Figures 11A,B). The subcellular location was identified as predominantly cytoplasmic and membranous. C10ORF54 expression was detected in 91% of HCC patient tumors (Figures 11C,D). The subcellular location was identified as predominantly cytoplasmic.

### Expression of PD-L1 in HCC Tumors Is Correlated With an EMT Phenotype

EMT is an important biological process involved in the progression and immune evasion of cancers. In HCC, EMT contributes to a poor prognosis (34, 35). Emerging research



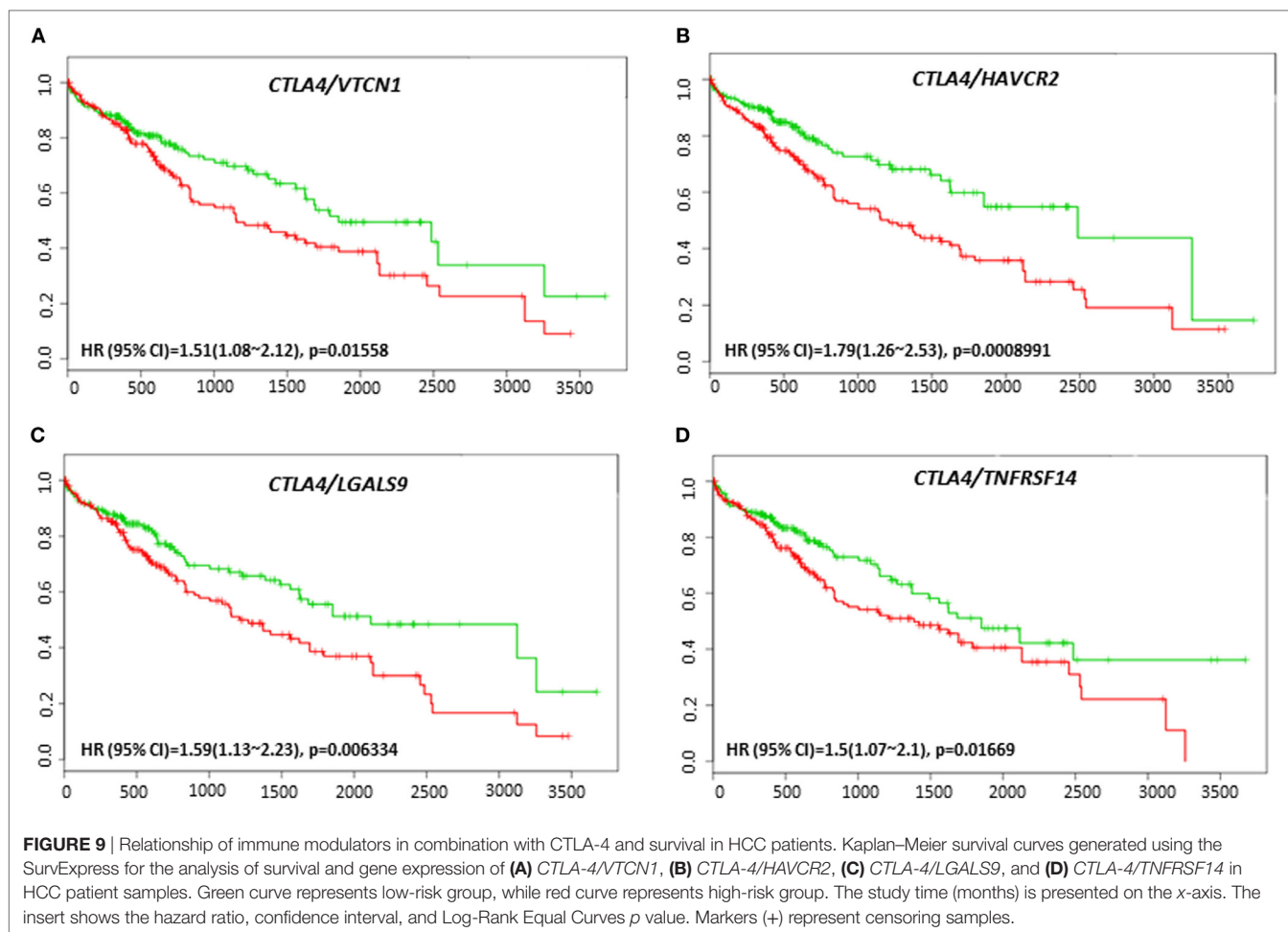
has found higher expression of PD-L1 in mesenchymal cells in non-small cell lung carcinoma (36). Therefore, we examined the relationship between the EMT phenotype and PD-L1 expression in HCC. By analyzing risk assessment using the TCGA-Liver-Cancer patient dataset (422 HCC patient samples) we confirmed that high expression of *PD-L1* and mesenchymal marker *VIM* and low expression of epithelial marker *CDH1* genes significantly associated with a high-risk signature ( $p < 0.05$ ) (Figure 12A).

Although *PD-L1* gene expression alone did not significantly correlate with poor survival in HCC patient datasets, coordinate expression of *CDH1* and *VIM* showed worse overall survival

(HR: 1.85, CI: 1.05~2.05, Log-Rank Equal Curves  $p = 0.02543$ ) and recurrence-free survival (HR: 1.72, CI: 1.2~2.48, Log-Rank Equal Curves  $p = 0.003402$ ) when combined with *PD-L1* (Figures 12B,C). This study shows that high expression of PD-L1 in HCC patients is associated with an EMT phenotype.

### Protein Expression in Normal Hepatocytes

GeneCards online portal was utilized to select tumor-associated immune regulatory genes with minimal or no expression in normal tissue and overexpression in HCC tumor cells. GeneCards online portal was used to study protein expression of immune modulators in normal hepatocytes (Table 2). The majority of



immune modulators are not expressed in normal hepatocytes. Some of the immune modulators including Galectin-9 and B7H3 have low protein expression in normal hepatocytes, while *LAG-3* and *CD73* showed low mRNA expression in normal hepatocytes. This data indicate that these biomarkers may be specifically expressed in HCC tumors and not in normal healthy cells but may be targeted safely.

## TMB in HCC Patients

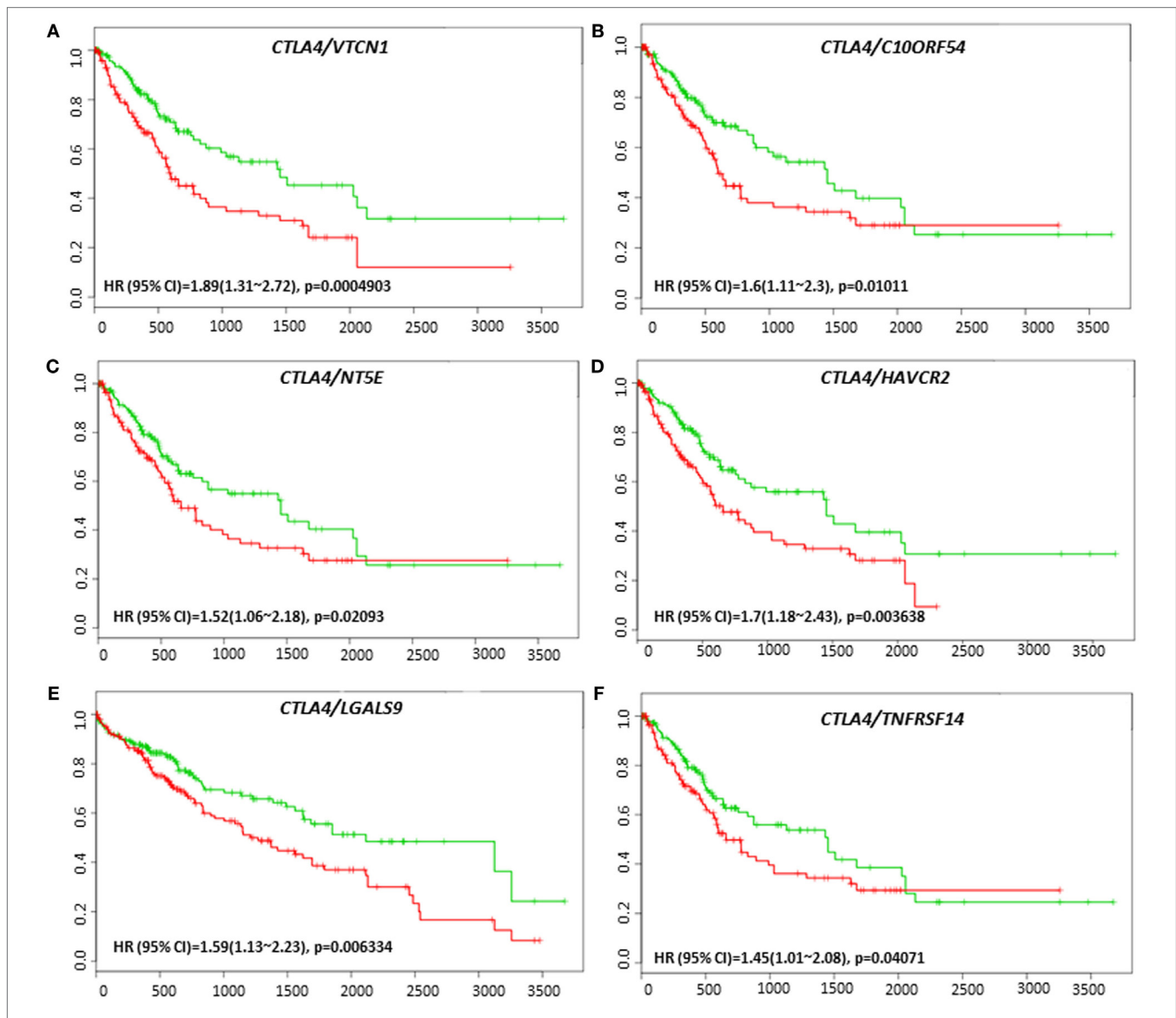
TMB or mutation load is the total number of mutations present in a tumor specimen. TMB is emerging as a reliable biomarker for predicting sensitivity to ICIs as immune checkpoint marker testing alone has proven insufficient in many cancers for patient selection (37). In non-small cell lung cancer and melanoma, high TMB has been associated with a higher likelihood of tumor responsiveness to treatment with PD-1 or PD-L1 immunotherapy strategies (38, 39). However, the value of TMB as an objective biomarker in the setting of HCC has not been explored. We sought to determine whether TMB could be associated with overall survival and progression-free survival in HCC patients. Patients with a high TMB had significantly poor overall survival and progression-free survival than those with a lower TMB (Figures 13A,B). As TMB-high cancers are likely to harbor neoantigens, making them

targets of immune cells, utilizing TMB as a biomarker may help select HCC patients for ICI blockade therapy.

## DISCUSSION

Implementation of immune regulatory drugs such as ICIs has elicited a remarkable clinical response and is becoming the new foundation for treatment of various malignancies. Currently, immunotherapy in the form of ICI may represent an effective treatment modality for HCC, mainly for advanced and recurrent HCC where no other effective options are available. This study identified many immune regulatory genes that were aberrantly expressed in HCC patient tumors. Immune regulatory genes *VTCN1*, *PDCD1LG2*, *HAVCR2*, and *C10ORF54* were associated with overall poor survival and *VTCN1*, *C10ORF54*, and *NT5E* predicted recurrence-free survival in HCC patients. *VTCN1*, *C10ORF54*, *HAVCR2*, *NT5E*, and *PDCD1LG2* in combination with PD-L1 functioned as robust markers that could prognosticate poor prognosis in these patients.

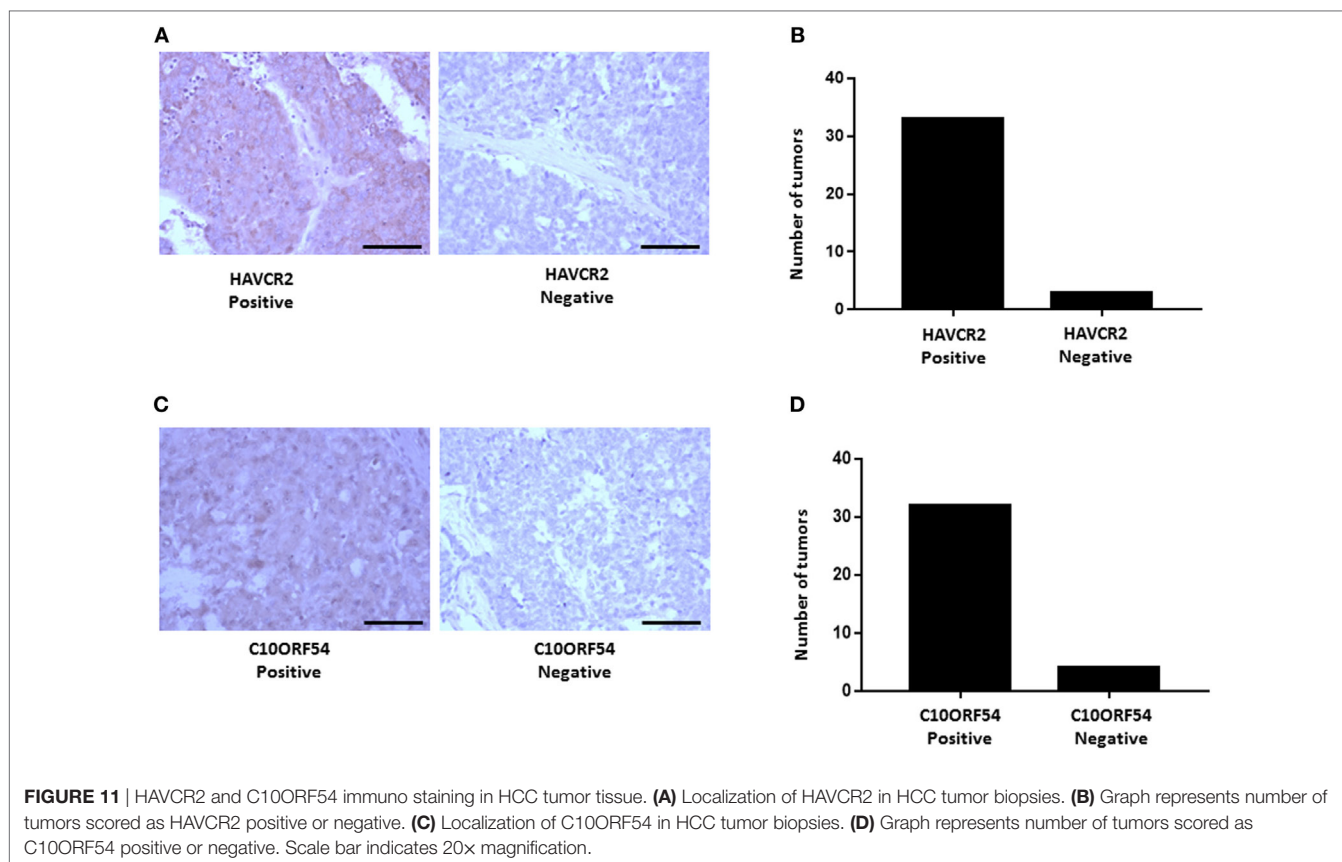
Identifying robust predictive immune biomarkers as useful tools to monitor patients at high risk for poor prognosis and to predict response to the ICI in patients is becoming popular by study of tumor immune



**FIGURE 10** | Relationship of immune modulators in combination with CTLA-4 and recurrence-free survival in HCC patients. Kaplan–Meier curves produced using the SurvExpress for the analysis of recurrence-free survival and gene expression of (A) *CTLA-4/VTCN1*, (B) *CTLA-4/C10ORF54*, (C) *CTLA-4/NTSE*, (D) *CTLA-4/HAVCR2*, (E) *CTLA-4/LGALS9*, and (F) *CTLA-4/TNFRSF14* in HCC patient samples. Green curve represents low-risk group, while red curve represents high-risk group. The study time (months) is presented on the x-axis. The insert shows the hazard ratio, confidence interval, and Log-Rank Equal Curves *p* value. Markers (+) represent censoring samples.

microenvironment. For instance, PD-L1 expression in tumors has been shown to be a predictive biomarker for poor prognosis and is also utilized as an important biomarker to predict the response to anti-PD-1 antibodies (40, 41). These findings support the relevance of immune regulatory molecules as biomarkers in the clinics. Given that only a subset of patients express PD-L1, and the majority of patients fail to demonstrate durable response and expression level of PD-L1 can fluctuate throughout the course of treatment; identifying other immune biomarkers could play an important role to further improve patient outcome. Based on immune biomarker expression, therapies will need to be employed on an individualized basis to ensure the best possible responses.

We found the negative regulator of T-cell response, V-set domain-containing T-cell activation inhibitor 1, VTCN1, (also named as B7-H4, B7S1, or B7x) was aberrantly expressed in HCC patients in the high-risk group and B7-H4 positivity was a statistically significant predictor of poor overall survival and recurrence-free survival. Studies have confirmed the high expression of B7-H4 in a variety of human tumors, including HCC (42, 43). In another study, soluble B7-H4 detected in blood samples from HCC patients was closely associated with advanced tumor stage, poor overall survival, and higher recurrence rate (44, 45). However, the function of B7-H4 in HCC tumors remains unknown. B7-H4 has been previously proposed to function as a ligand for BTLA (also known as CD272), an



Ig superfamily member. The B7-H4-Ig fusion protein inhibits T-cell activation (46).

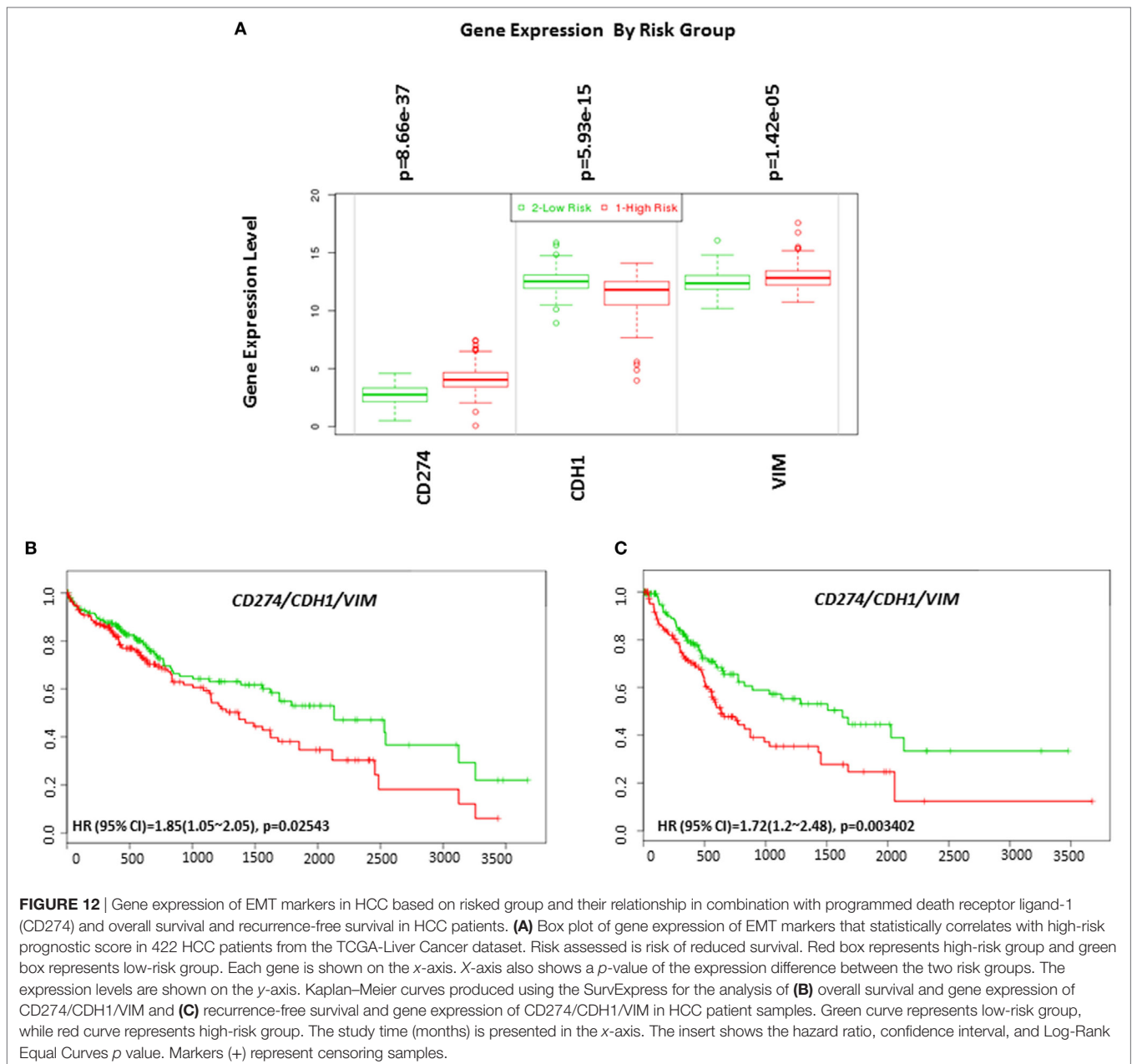
The inhibitory immune checkpoint molecule, V-domain immunoglobulin suppressor of T cell activation (VISTA or C10ORF54) is a type 1 transmembrane protein that blocks T-cell activation (47). We found that the overall survival and recurrence-free survival was significantly lower in the high-risk group HCC patients with high VISTA expression. Another study showed that VISTA was overexpressed in oral squamous cell carcinoma and correlated with other immune checkpoint markers PD-L1 and CTLA-4. In addition, the study also showed a poor prognosis in patients with high VISTA and low CD8<sup>+</sup> T-cells (48).

The glycosphatidylinositol-anchored receptor enzyme, ecto-5'-nucleotidase (CD73 or NT5E) inhibits T-cell receptor activation when adenosine binds to its receptor (49). Our study showed NT5E positivity was a statistically significant predictor of poor overall survival and recurrence-free survival in HCC. Our study is consistent with previous studies in triple negative breast cancer, head and neck squamous cell carcinoma, ovarian cancer, and various other gastric carcinoma where NT5E expression in tumor tissues was correlated with poor prognosis (50–54).

T-cell immunoglobulin and mucin domain-containing-3 (TIM-3 or HAVCR2) is an immune checkpoint receptor that binds to its ligand Galectin-9 and limits the T-cell responses (55). Our study showed that TIM-3 is overexpressed in the high-risk group of HCC patients and had significantly worse overall survival. Another study has also confirmed the high expression

of TIM-3 in HCC patient tumors than in healthy controls (56). Furthermore, the overall survival time for patients with higher TIM-3 expression is lower than that of patients with lower TIM-3 expression (57). Taken together, these findings indicate that costimulatory and checkpoint genes can be beneficial for the clinical evaluation of HCC patients, especially to identify patients who are at increased risk of worse survival and relapse. A limitation of our study is the lack of HCC patients treated with immune checkpoint therapies. Further studies to validate the expression of these immune predictors in HCC patient cohorts treated with immune checkpoint therapies will be important. The role of these genes in HCC has not been fully elucidated. However, it is conceivable that these immune regulatory molecules may play pivotal roles in modulating the immune response in HCC. Expression, distribution, and function of these immune regulatory molecules in HCC tissues warrant further investigation.

While the clinical relevance of immune-regulators expressed on immune cells is well established, this study focused on the altered expression of immune regulatory genes in HCC tumors. In addition to serving as useful prognostic biomarkers for HCC, targeting B7-H4, PD-L2, TIM-3, VISTA, CD73, and PD-L1 axis with antagonistic antibodies may prove to be beneficial in a subset of HCC patients with elevated levels of these genes. VTCN1, HAVCR2, NT5E, LGALS9, CD80, and PD-1 axis may also represent useful prognostic biomarkers for HCC. Additionally, elevated VTCN1, HAVCR2, LGALS9, TNFRSF14, and CTLA-4 axis can also be beneficial as prognostic biomarkers for HCC.



Given that ICI depend on the receptor–ligand interactions between T-cells and tumor cells, and the combined elevated expression of immune regulatory molecules on tumor-infiltrating T-cells and tumor cells is more predictive of ICI response, further comprehensive studies are needed to address the relationship of these immune regulatory molecules on both tumor and tumor-infiltrating T-cells. A recent study showed improved survival in patients with high chronic inflammatory response in the stroma (58). In support of these findings, clarifying the immune regulators involved in the effector functions of tumor-associated T-cells has important implications for our understanding of how the immune microenvironment is modulated to promote antitumor immune responses.

Although there is interest in the use of ICIs in HCC, the coordinated upregulation of immune checkpoint and other immune-regulated genes in our study suggests that a combinatorial treatment strategy is likely to be more beneficial. Early trial results on the combination of PD-L1 and CTLA-4 targeting were first found to be valuable in malignant melanoma (59). Subsequently, combination of these ICIs also resulted in remarkable tumor regression and improved overall survival in many cancers (60). These clinical trials showed a significant advantage of combination therapy over ICI monotherapies. Recent studies have shown that upregulation of immune-related molecules such as TIM-3 occurs in mice and humans following PD-1 inhibition (61) and in the case of anti-CTLA-4 treatment, VISTA, and PD-L1 were

upregulated (62). The elevation in these additional immune regulatory molecules has been proposed to lead to development of resistance to ICI therapies resulting in a significant fraction of cancer patients who do not benefit from the existing checkpoint inhibitor therapies. These findings provide a clinical incentive to combine different ICI therapies to potentially sensitize HCC tumors. In our study, the coordinated expression of immune regulatory molecules, such as *B7-H4*, *TIM-3*, and *VISTA* with *PD-L1* correlated with poor prognosis, while the co-occurrence of *B7-H4*, *TIM3*, *VISTA*, *CD73*, and *PD-L2* with *PD-L1* correlated with poor recurrence-free survival. The identification of these additional immune biomarkers can help to select patients who might benefit from combination immunotherapy.

Our study is the first to provide direct evidence that EMT phenotype is associated with PD-L1 expression in HCC patient tissues. This observation is in line with another study in pulmonary adenocarcinoma where an association between the messenger

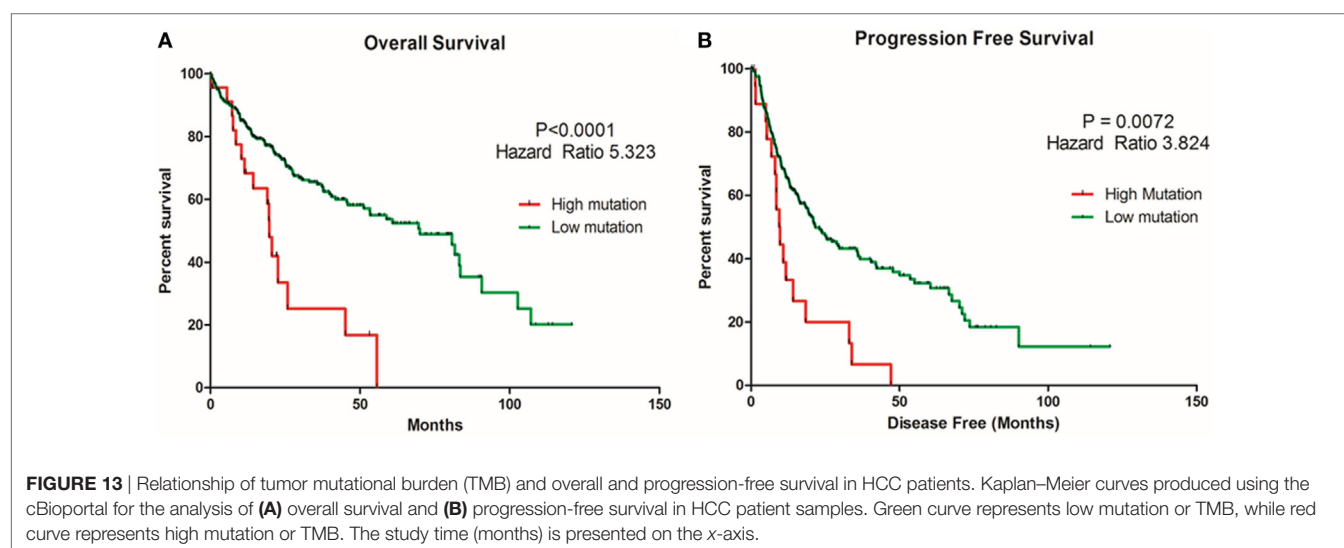
RNA EMT signature and high PD-L1 expression was found (24). Another study demonstrated a molecular link between EMT and PD-L1 regulation, in both *in vitro* and *in vivo* models (63). It has been suggested that EMT and PD-L1 may bidirectionally influence each other to promote tumor aggressiveness (64). It is conceivable that HCC patients with EMT phenotype would likely benefit from PD-1/PD-L1 targeted immunotherapy. Further studies of the precise molecular mechanisms underlying the association between EMT and PD-L1 expression in HCC tumor microenvironment are warranted.

Recently, high TMB has been associated with better outcome parameters, such as higher response rates to immunotherapy, longer progression-free survival, and overall survival in melanoma and non-small cell lung cancer (65, 66). A study reported that TMB was more reliable in predicting response rate than the expression of PD-L1 by immunohistochemistry (67). A recent study demonstrated that TMB was a reliable biomarker for predicting response to single checkpoint inhibitor, whereas, outcome after anti-PD-1/PD-L1/anti-CTLA4 combinations appeared to be independent of TMB. Our data suggest that TMB can be used to stratify HCC patients for ICI therapy (66). A limitation of our study is the lack of patients treated with ICIs. Further studies are needed to confirm the relationship between TMB and outcome in immunotherapy-treated HCC patients. Moreover, further understanding of the molecular mechanisms which lead to high TMB in HCC is important. In addition to immune markers and TMB, data are emerging on future development of new predictive biomarker strategies for ICI-based immunotherapy, including tumor-infiltrating lymphocytes, immune gene signatures, and multiplex immunohistochemistry (37).

The immune biomarker research represents a promising strategy to guide patient selection and predicts response to immune checkpoint blockade therapies in terms of durable responses or survival benefit. Blockade of immune regulatory molecules identified in this study, including *B7-H4*, *VISTA*, *CD73*, *PD-L2*, and *TIM-3* can potentially offer a treatment strategy to reinstate host immune response against HCC and ultimately tumor regression. Furthermore, the potential to reverse resistance to ICI depends on proper combination therapy that targets the antitumor immune

**TABLE 2** | Estimated protein expression in normal hepatocytes.

| Immune modulator | Estimated protein expression log <sub>10</sub> (ppm) in liver |
|------------------|---|
| B7-H4            | No expression   |
| LGALS9           | Low expression  |
| B7-H3            | Low expression  |
| IDO-1            | No expression   |
| HVEM             | No expression   |
| FASLG            | No expression   |
| LAG3             | Low mRNA expression   |
| TIGIT            | No expression   |
| TIM-3            | No expression   |
| CD137            | No data   |
| VISTA            | Low expression  |
| CD73             | Low mRNA expression   |
| CD80             | No expression   |
| GITR             | No expression   |
| PD-L2            | No expression   |
| BTLA             | No expression   |
| CD27             | No expression   |
| PD-L1            | No expression   |
| CD28             | No expression   |



response. Although a combinatorial approach is likely to be more beneficial, their use may be limited by a risk of developing more side effects with combination therapy. The translation of combination therapy approaches for better clinical success in HCC patients can be improved through further mechanistic insights on immunotherapy combination strategies along with immune biomarkers.

## AUTHOR CONTRIBUTIONS

RS, PP, and AJ performed data acquisition, analysis, and interpretation. PP performed statistical analysis. RS, AJ, PP, and BD wrote the manuscript. KB, DC, and JS critically revised the manuscript. JS and AJ designed the study. MA performed TMB analysis. RS, AJ, PP, KB, and MA revised the manuscript.

## REFERENCES

1. Ferlay J, Soerjomataram I, Dikshit R, Eser S, Mathers C, Rebelo M, et al. Cancer incidence and mortality worldwide: sources, methods and major patterns in GLOBOCAN 2012. *Int J Cancer* (2015) 136(5):E359–86. doi:10.1002/ijc.29210
2. Montagnana M, Danese E, Lippi G. Squamous cell carcinoma antigen in hepatocellular carcinoma: ready for the prime time? *Clin Chim Acta* (2015) 445:161–6. doi:10.1016/j.cca.2015.03.031
3. Chacko S, Samanta S. Hepatocellular carcinoma: a life-threatening disease. *Biomed Pharmacother* (2016) 84:1679–88. doi:10.1016/j.biopha.2016.10.078
4. Balogh J, Victor D, Asham EH, Burroughs SG, Boktour M, Saharia A, et al. Hepatocellular carcinoma: a review. *J Hepatocell Carcinoma* (2016) 3:41–53. doi:10.2147/JHC.S61146
5. Parikh S, Hyman D. Hepatocellular cancer: a guide for the internist. *Am J Med* (2007) 120(3):194–202. doi:10.1016/j.amjmed.2006.11.020
6. European Association For The Study Of The Liver, European Organisation For Research And Treatment Of Cancer. EASL-EORTC clinical practice guidelines: management of hepatocellular carcinoma. *Eur J Cancer* (2012) 48(5):599–641. doi:10.1016/j.ejca.2011.12.021
7. Dhungel B, Jayachandran A, Layton CJ, Steel JC. Seek and destroy: targeted adeno-associated viruses for gene delivery to hepatocellular carcinoma. *Drug Deliv* (2017) 24(1):289–99. doi:10.1080/10717544.2016.1247926
8. Llovet JM, Burroughs A, Bruix J. Hepatocellular carcinoma. *Lancet* (2003) 362(9399):1907–17. doi:10.1016/S0140-6736(03)14964-1
9. Mazzaferro V, Regalia E, Doci R, Andreola S, Pulvirenti A, Bozzetti F, et al. Liver transplantation for the treatment of small hepatocellular carcinomas in patients with cirrhosis. *N Engl J Med* (1996) 334(11):693–9. doi:10.1056/NEJM199603143341104
10. Chen Z, Shen S, Peng B, Tao J. Intratumoural GM-CSF microspheres and CTLA-4 blockade enhance the antitumour immunity induced by thermal ablation in a subcutaneous murine hepatoma model. *Int J Hyperthermia* (2009) 25(5):374–82. doi:10.1080/02656730902976807
11. Llovet JM, Ricci S, Mazzaferro V, Hilgard P, Gane E, Blanc JF, et al. Sorafenib in advanced hepatocellular carcinoma. *N Engl J Med* (2008) 359(4):378–90. doi:10.1056/NEJMoa0708857
12. Mir N, Jayachandran A, Dhungel B, Shrestha R, Steel JC. Epithelial-to-mesenchymal transition: a mediator of sorafenib resistance in advanced hepatocellular carcinoma. *Curr Cancer Drug Targets* (2017) 17(8):698–706. doi:10.2174/1568009617666170427104356
13. Hato T, Goyal L, Greten TF, Duda DG, Zhu AX. Immune checkpoint blockade in hepatocellular carcinoma: current progress and future directions. *Hepatology* (2014) 60(5):1776–82. doi:10.1002/hep.27246
14. Nemeth E, Baird AW, O'Farrelly C. Microanatomy of the liver immune system. *Semin Immunopathol* (2009) 31(3):333–43. doi:10.1007/s00281-009-0173-4
15. Thomson AW, Knolle PA. Antigen-presenting cell function in the tolerogenic liver environment. *Nat Rev Immunol* (2010) 10(11):753–66. doi:10.1038/nri2858

## ACKNOWLEDGMENTS

We acknowledge cBioPortal for Cancer Genomics site which provides a web resource for exploring, visualizing, and analyzing multidimensional cancer genomics data. We acknowledge SurExpress for providing a platform for biomarker evaluation. We also acknowledge the TCGA Research Network for generating TCGA datasets. We thank Gallipoli Medical Research Foundation for funding this study.

## FUNDING

We thank Gallipoli Medical Research Foundation for funding this study.

16. Hodi FS, O'Day SJ, McDermott DF, Weber RW, Sosman JA, Haanen JB, et al. Improved survival with ipilimumab in patients with metastatic melanoma. *N Engl J Med* (2010) 363(8):711–23. doi:10.1056/NEJMoa1003466
17. Topalian SL, Drake CG, Pardoll DM. Immune checkpoint blockade: a common denominator approach to cancer therapy. *Cancer Cell* (2015) 27(4):450–61. doi:10.1016/j.ccell.2015.03.001
18. Pardoll DM. The blockade of immune checkpoints in cancer immunotherapy. *Nat Rev Cancer* (2012) 12(4):252–64. doi:10.1038/nrc3239
19. Kudo M. Immune checkpoint inhibition in hepatocellular carcinoma: basics and ongoing clinical trials. *Oncology* (2017) 92(Suppl 1):50–62. doi:10.1159/000451016
20. Sangro B, Gomez-Martin C, de la Mata M, Iñarrairaegui M, Garralda E, Barrera P, et al. A clinical trial of CTLA-4 blockade with tremelimumab in patients with hepatocellular carcinoma and chronic hepatitis C. *J Hepatol* (2013) 59(1):81–8. doi:10.1016/j.jhep.2013.02.022
21. Zaretsky JM, Garcia-Diaz A, Shin DS, Escuin-Ordinas H, Hugo W, Hu-Lieskovan S, et al. Mutations associated with acquired resistance to PD-1 blockade in melanoma. *N Engl J Med* (2016) 375(9):819–29. doi:10.1056/NEJMoa1604958
22. Kalluri R, Weinberg RA. The basics of epithelial-mesenchymal transition. *J Clin Invest* (2009) 119(6):1420–8. doi:10.1172/JCI39104
23. Kudo-Saito C, Shirako H, Takeuchi T, Kawakami Y. Cancer metastasis is accelerated through immunosuppression during Snail-induced EMT of cancer cells. *Cancer Cell* (2009) 15(3):195–206. doi:10.1016/j.ccr.2009.01.023
24. Mak MP, Tong P, Diao L, Cardnell RJ, Gibbons DL, William WN, et al. A patient-derived, pan-cancer EMT signature identifies global molecular alterations and immune target enrichment following epithelial-to-mesenchymal transition. *Clin Cancer Res* (2016) 22(3):609–20. doi:10.1158/1078-0432.CCR-15-0876
25. Bouillez A, Rajabi H, Jin C, Samur M, Tagde A, Alam M, et al. MUC1-C integrates PD-L1 induction with repression of immune effectors in non-small-cell lung cancer. *Oncogene* (2017) 36(28):4037–46. doi:10.1038/onc.2017.47
26. Aguirre-Gamboa R, Gomez-Rueda H, Martínez-Ledesma E, Martínez-Torteya A, Chacolla-Huaringa R, Rodriguez-Barrientos A, et al. SurVExpress: an online biomarker validation tool and database for cancer gene expression data using survival analysis. *PLoS One* (2013) 8(9):e74250. doi:10.1371/journal.pone.0074250
27. Gao J, Aksoy BA, Dogrusoz U, Dresdner G, Gross B, Sumer SO, et al. Integrative analysis of complex cancer genomics and clinical profiles using the cBioPortal. *Sci Signal* (2013) 6(269):11. doi:10.1126/scisignal.2004088
28. Hoshida Y, Villanueva A, Kobayashi M, Peix J, Chiang DY, Camargo A, et al. Gene expression in fixed tissues and outcome in hepatocellular carcinoma. *N Engl J Med* (2008) 359(19):1995–2004. doi:10.1056/NEJMoa0804525
29. Hoshida Y, Nijman SM, Kobayashi M, Chan JA, Brunet JP, Chiang DY, et al. Integrative transcriptome analysis reveals common molecular subclasses of human hepatocellular carcinoma. *Cancer Res* (2009) 69(18):7385–92. doi:10.1158/0008-5472.CAN-09-1089
30. Tsuchiya M, Parker JS, Kono H, Matsuda M, Fujii H, Rusyn I. Gene expression in nontumoral liver tissue and recurrence-free survival in



- hepatitis C virus-positive hepatocellular carcinoma. *Mol Cancer* (2010) 9:74. doi:10.1186/1476-4598-9-74
31. Stelzer G, Rosen N, Plaschkes I, Zimmerman S, Twik M, Fishilevich S, et al. The genecards suite: from gene data mining to disease genome sequence analyses. *Curr Protoc Bioinformatics* (2016) 54:1.30.1–1.30.33. doi:10.1002/cpbi.5
  32. Jayachandran A, Anaka M, Prithviraj P, Hudson C, McKeown SJ, Lo PH, et al. Thrombospondin 1 promotes an aggressive phenotype through epithelial-to-mesenchymal transition in human melanoma. *Oncotarget* (2014) 5(14):5782–97. doi:10.18632/oncotarget.2164
  33. Awan FM, Naz A, Obaid A, Ali A, Ahmad J, Anjum S, et al. Identification of circulating biomarker candidates for hepatocellular carcinoma (HCC): an integrated prioritization approach. *PLoS One* (2015) 10(9):e0138913. doi:10.1371/journal.pone.0138913
  34. Zheng X, Gai X, Wu Z, Liu Q, Yao Y. Metastasis leads to poor prognosis of hepatocellular carcinoma through partly inducing EMT. *Oncol Rep* (2013) 29(5):1811–8. doi:10.3892/or.2013.2341
  35. Wan T, Zhang T, Si X, Zhou Y. Overexpression of EMT-inducing transcription factors as a potential poor prognostic factor for hepatocellular carcinoma in Asian populations: a meta-analysis. *Oncotarget* (2017) 8(35):59500–8. doi:10.18632/oncotarget.18352
  36. Lou Y, Diao L, Cuentas ER, Denning WL, Chen L, Fan YH, et al. Epithelial-mesenchymal transition is associated with a distinct tumor microenvironment including elevation of inflammatory signals and multiple immune checkpoints in lung adenocarcinoma. *Clin Cancer Res* (2016) 22(14):3630–42. doi:10.1158/1078-0432.CCR-15-1434
  37. Gibney GT, Weiner LM, Atkins MB. Predictive biomarkers for checkpoint inhibitor-based immunotherapy. *Lancet Oncol* (2016) 17(12):e542–51. doi:10.1016/S1470-2045(16)30406-5
  38. Rizvi NA, Hellmann MD, Snyder A, Kvistborg P, Makarov V, Havel JJ, et al. Cancer immunology. Mutational landscape determines sensitivity to PD-1 blockade in non-small cell lung cancer. *Science* (2015) 348(6230):124–8. doi:10.1126/science.aaa1348
  39. Johnson DB, Frampton GM, Roth MJ, Yusko E, Xu Y, Guo X, et al. Targeted next generation sequencing identifies markers of response to PD-1 blockade. *Cancer Immunol Res* (2016) 4(11):959–67. doi:10.1158/2326-6066.CIR-16-0143
  40. Chen CL, Pan QZ, Zhao JJ, Wang Y, Li YQ, Wang QJ, et al. PD-L1 expression as a predictive biomarker for cytokine-induced killer cell immunotherapy in patients with hepatocellular carcinoma. *Oncoimmunology* (2016) 5(7):e1176653. doi:10.1080/2162402X.2016.1176653
  41. Passiglia F, Bronte G, Bazan V, Natoli C, Rizzo S, Galvano A, et al. PD-L1 expression as predictive biomarker in patients with NSCLC: a pooled analysis. *Oncotarget* (2016) 7(15):19738–47. doi:10.18632/oncotarget.7582
  42. Yuan L, Dong L, Yu G, Fan W, Zhang L, Wang P, et al. Aberrant expression of B7-H4 may contribute to the development of hepatocellular carcinoma. *Mol Med Rep* (2016) 14(6):5015–24. doi:10.3892/mmr.2016.5887
  43. Kang FB, Wang L, Sun DX, Li HJ, Li D, Wang Y, et al. B7-H4 overexpression is essential for early hepatocellular carcinoma progression and recurrence. *Oncotarget* (2017) 8(46):80878–88. doi:10.18632/oncotarget.20718
  44. Zhang C, Li Y, Wang Y. Diagnostic value of serum B7-H4 for hepatocellular carcinoma. *J Surg Res* (2015) 197(2):301–6. doi:10.1016/j.jss.2015.04.034
  45. Zhang SA, Wu ZX, Zhang X, Zeng ZY, Li DL. Circulating B7-H4 in serum predicts prognosis in patients with hepatocellular carcinoma. *Genet Mol Res* (2015) 14(4):13041–8. doi:10.4238/2015.October.21.25
  46. Carreno BM, Collins M. BTLA: a new inhibitory receptor with a B7-like ligand. *Trends Immunol* (2003) 24(10):524–7. doi:10.1016/j.it.2003.08.005
  47. Li N, Xu W, Yuan Y, Ayithan N, Imai Y, Wu X, et al. Immune-checkpoint protein VISTA critically regulates the IL-23/IL-17 inflammatory axis. *Sci Rep* (2017) 7(1):1485. doi:10.1038/s41598-017-01411-1
  48. Wu L, Deng WW, Huang CF, Bu LL, Yu GT, Mao L, et al. Expression of VISTA correlated with immunosuppression and synergized with CD8 to predict survival in human oral squamous cell carcinoma. *Cancer Immunol Immunother* (2017) 66(5):627–36. doi:10.1007/s00262-017-1968-0
  49. Hay CM, Sult E, Huang Q, Mulgrew K, Fuhrmann SR, McGlinchey KA, et al. Targeting CD73 in the tumor microenvironment with MEDI9447. *Oncoimmunology* (2016) 5(8):e1208875. doi:10.1080/2162402X.2016.1208875
  50. Loi S, Pommey S, Haibe-Kains B, Beavis PA, Darcy PK, Smyth MJ, et al. CD73 promotes anthracycline resistance and poor prognosis in triple negative breast cancer. *Proc Natl Acad Sci U S A* (2013) 110(27):11091–6. doi:10.1073/pnas.1222251110
  51. Lu XX, Chen YT, Feng B, Mao XB, Yu B, Chu XY. Expression and clinical significance of CD73 and hypoxia-inducible factor-1 $\alpha$  in gastric carcinoma. *World J Gastroenterol* (2013) 19(12):1912–8. doi:10.3748/wjg.v19.i12.1912
  52. Turcotte M, Spring K, Pommey S, Chouinard G, Cousineau I, George J, et al. CD73 is associated with poor prognosis in high-grade serous ovarian cancer. *Cancer Res* (2015) 75(21):4494–503. doi:10.1158/0008-5472.CAN-14-3569
  53. Ren ZH, Lin CZ, Cao W, Yang R, Lu W, Liu ZQ, et al. CD73 is associated with poor prognosis in HNSCC. *Oncotarget* (2016) 7(38):61690–702. doi:10.18632/oncotarget.11435
  54. Whiteside TL. Targeting adenosine in cancer immunotherapy: a review of recent progress. *Expert Rev Anticancer Ther* (2017) 17(6):527–35. doi:10.1080/14737140.2017.1316197
  55. Anderson AC. Tim-3: an emerging target in the cancer immunotherapy landscape. *Cancer Immunol Res* (2014) 2(5):393–8. doi:10.1158/2326-6066.CIR-14-0039
  56. Yan W, Liu X, Ma H, Zhang H, Song X, Gao L, et al. Tim-3 fosters HCC development by enhancing TGF- $\beta$ -mediated alternative activation of macrophages. *Gut* (2015) 64(10):1593–604. doi:10.1136/gutjnl-2014-307671
  57. Cheng G, Li M, Wu J, Ji M, Fang C, Shi H, et al. Expression of Tim-3 in gastric cancer tissue and its relationship with prognosis. *Int J Clin Exp Pathol* (2015) 8(8):9452–7.
  58. Suzuki K, Kadota K, Sima CS, Sadelain M, Rusch VW, Travis WD, et al. Chronic inflammation in tumor stroma is an independent predictor of prolonged survival in epithelioid malignant pleural mesothelioma patients. *Cancer Immunol Immunother* (2011) 60(12):1721–8. doi:10.1007/s00262-011-1073-8
  59. Wolchok JD, Kluger H, Callahan MK, Postow MA, Rizvi NA, Lesokhin AM, et al. Nivolumab plus ipilimumab in advanced melanoma. *N Engl J Med* (2013) 369(2):122–33. doi:10.1056/NEJMoa1302369
  60. Wu Y, Shi H, Jiang M, Qiu M, Jia K, Cao T, et al. The clinical value of combination of immune checkpoint inhibitors in cancer patients: a meta-analysis of efficacy and safety. *Int J Cancer* (2017) 141(12):2562–70. doi:10.1002/ijc.31012
  61. Koyama S, Akbay EA, Li YY, Herter-Sprie GS, Buczkowski KA, Richards WG, et al. Adaptive resistance to therapeutic PD-1 blockade is associated with upregulation of alternative immune checkpoints. *Nat Commun* (2016) 7:10501. doi:10.1038/ncomms10501
  62. Gao J, Ward JF, Pettaway CA, Shi LZ, Subudhi SK, Vence LM, et al. VISTA is an inhibitory immune checkpoint that is increased after ipilimumab therapy in patients with prostate cancer. *Nat Med* (2017) 23(5):551–5. doi:10.1038/nm.4308
  63. Chen L, Gibbons DL, Goswami S, Cortez MA, Ahn YH, Byers LA, et al. Metastasis is regulated via microRNA-200/ZEB1 axis control of tumour cell PD-L1 expression and intratumoral immunosuppression. *Nat Commun* (2014) 5:5241. doi:10.1038/ncomms6241
  64. Alsuliman A, Colak D, Al-Harazi O, Fitwi H, Tulbah A, Al-Tweigeri T, et al. Bidirectional crosstalk between PD-L1 expression and epithelial to mesenchymal transition: significance in claudin-low breast cancer cells. *Mol Cancer* (2015) 14:149. doi:10.1186/s12943-015-0421-2
  65. Alexandrov LB, Nik-Zainal S, Wedge DC, Aparicio SA, Behjati S, Biankin AV, et al. Signatures of mutational processes in human cancer. *Nature* (2013) 500(7463):415–21. doi:10.1038/nature12477
  66. Goodman AM, Kato S, Bazhenova L, Patel SP, Frampton GM, Miller V, et al. Tumor mutational burden as an independent predictor of response to immunotherapy in diverse cancers. *Mol Cancer Ther* (2017) 16(11):2598–608. doi:10.1158/1535-7163.MCT-17-0386
  67. Rosenberg JE, Hoffman-Censits J, Powles T, van der Heijden MS, Balar AV, Necchi A, et al. Atezolizumab in patients with locally advanced and metastatic urothelial carcinoma who have progressed following treatment with platinum-based chemotherapy: a single-arm, multicentre, phase 2 trial. *Lancet* (2016) 387(10031):1909–20. doi:10.1016/S0140-6736(16)00561-4

**Conflict of Interest Statement:** The authors declare that the research was conducted in the absence of any commercial or financial relationships that could be construed as a potential conflict of interest.

Copyright © 2018 Shrestha, Prithviraj, Anaka, Bridle, Crawford, Dhungel, Steel and Jayachandran. This is an open-access article distributed under the terms of the Creative Commons Attribution License (CC BY). The use, distribution or reproduction in other forums is permitted, provided the original author(s) and the copyright owner(s) are credited and that the original publication in this journal is cited, in accordance with accepted academic practice. No use, distribution or reproduction is permitted which does not comply with these terms.