



Novel Phosphorylation-State Specific Antibodies Reveal Differential Deposition of Ser26 Phosphorylated A β Species in a Mouse Model of Alzheimer's Disease

Sathish Kumar^{1*}, Akshay Kapadia¹, Sandra Theil¹, Pranav Joshi¹, Florian Riffel¹, Michael T. Heneka^{2,3} and Jochen Walter^{1*}

¹Department of Neurology, University of Bonn Medical Center, Bonn, Germany, ²Department of Neurodegenerative Diseases and Geropsychiatry, Neurology, University of Bonn Medical Center, Bonn, Germany, ³German Center for Neurodegenerative Diseases (DZNE), Bonn, Germany

OPEN ACCESS

Edited by:

Wolfgang Hoyer,
Heinrich Heine University of
Düsseldorf, Germany

Reviewed by:

Wayne Carter,
University of Nottingham,
United Kingdom
Tadafumi Hashimoto,
The University of Tokyo, Japan

*Correspondence:

Sathish Kumar
sathish.kumar@ukbonn.de
Jochen Walter
jochen.walter@ukbonn.de

Received: 20 October 2020

Accepted: 15 December 2020

Published: 15 January 2021

Citation:

Kumar S, Kapadia A, Theil S, Joshi P, Riffel F, Heneka MT and Walter J (2021) Novel Phosphorylation-State Specific Antibodies Reveal Differential Deposition of Ser26 Phosphorylated A β Species in a Mouse Model of Alzheimer's Disease. *Front. Mol. Neurosci.* 13:619639. doi: 10.3389/fnmol.2020.619639

Aggregation and deposition of amyloid- β (A β) peptides in extracellular plaques and in the cerebral vasculature are prominent neuropathological features of Alzheimer's disease (AD) and closely associated with the pathogenesis of AD. Amyloid plaques in the brains of most AD patients and transgenic mouse models exhibit heterogeneity in the composition of A β deposits, due to the occurrence of elongated, truncated, and post-translationally modified A β peptides. Importantly, changes in the deposition of these different A β variants are associated with the clinical disease progression and considered to mark sequential phases of plaque and cerebral amyloid angiopathy (CAA) maturation at distinct stages of AD. We recently showed that A β phosphorylated at serine residue 26 (pSer26A β) has peculiar characteristics in aggregation, deposition, and neurotoxicity. In the current study, we developed and thoroughly validated novel monoclonal and polyclonal antibodies that recognize A β depending on the phosphorylation-state of Ser26. Our results demonstrate that selected phosphorylation state-specific antibodies were able to recognize Ser26 phosphorylated and non-phosphorylated A β with high specificity in enzyme-linked immunosorbent assay (ELISA) and Western Blotting (WB) assays. Furthermore, immunofluorescence analyses with these antibodies demonstrated the occurrence of pSer26A β in transgenic mouse brains that show differential deposition as compared to non-phosphorylated A β (npA β) or other modified A β species. Notably, pSer26A β species were faintly detected in extracellular A β plaques but most prominently found intraneuronally and in cerebral blood vessels. In conclusion, we developed new antibodies to specifically differentiate A β peptides depending on the phosphorylation state of Ser26, which are applicable in ELISA, WB, and immunofluorescence staining of mouse brain tissues. These site- and phosphorylation state-specific A β antibodies represent novel tools to examine phosphorylated A β species to further understand and dissect the complexity in the age-related and spatio-temporal deposition of different A β variants in transgenic mouse models and human AD brains.

Keywords: Alzheimer's disease, amyloid- β peptide, cerebral amyloid angiopathy, post-translational modification, modified amyloid- β , phosphorylation, monoclonal antibody, mouse models

INTRODUCTION

Alzheimer's disease (AD) is the most common form of dementia worldwide (Alzheimer's Association, 2020). The two primary pathological hallmarks of the AD brain are abnormal extracellular deposits of amyloid- β (A β) peptide and intracellular neurofibrillary tangles (NFTs) of tau protein (Selkoe and Hardy, 2016; Goedert, 2018; DeTure and Dickson, 2019; Jellinger, 2020). The aggregation and deposition of A β peptides in the form of amyloid plaques is a critical early step in the disease process that is hypothesized to trigger a complex pathological cascade that ultimately leads to the development of clinical dementia (Duyckaerts et al., 2009; Braak et al., 2011; Calderon-Garcidueñas and Duyckaerts, 2017; Davidson et al., 2018). The critical role of A β in the pathogenesis of AD is strongly supported by the identification of early-onset familial AD (FAD)-causing mutations within the genes encoding either the amyloid precursor protein (APP) itself or presenilin 1 and 2 (PS1 and PS2) that commonly alter the production of A β peptides in quantitative and qualitative ways (Bateman et al., 2011; Benilova et al., 2012; Katsnelson et al., 2016; De Strooper and Karran, 2016). Strikingly, mutations identified in the APP either within or close to the A β region affect A β production or alter A β aggregation properties, and thereby promote the formation of toxic A β aggregates (Grant et al., 2007; Hunter and Brayne, 2018). Further, there is strong evidence that the genetic risk for AD that has been associated with polymorphisms in both Apolipoprotein E (ApoE) and Clusterin (CLU) is at least partly attributable to effects of these proteins on A β deposition (Ray et al., 1998; Tanzi, 2012; Bettens et al., 2013; Karch et al., 2014; Tcw and Goate, 2017; Belloy et al., 2019). Collectively, these genetic studies indicate that the accumulation and aggregation of A β can be a trigger in the pathogenesis of AD-related dementia.

Amyloid deposits in the parenchyma and vasculature consist mainly of A β peptides with 38–43 amino acids (A β 38, A β 40, A β 42, and A β 43; Masters et al., 1985; Glenner and Wong, 2012; Moro et al., 2012). Consistent with an increased propensity to form aggregates (Harper and Lansbury, 1997; Rochet and Lansbury, 2000; Lansbury and Lashuel, 2006; Grant et al., 2007; Teplow, 2012), A β 42 is the predominant species found initially in amyloid plaques in the parenchyma (Iwatsubo et al., 1996; Mann and Iwatsubo, 1996). In addition to these well-known amino acid length variants, several additional N- and C-terminally truncated or elongated A β variants have been described (Saido et al., 1996; Russo et al., 1997; Tekirian et al., 1998; Geddes et al., 1999; Saito et al., 2011; Schönherr et al., 2016; Becker-Pauly and Pietrzik, 2017; Dunys et al., 2018; Walter et al., 2019). Further heterogeneity in A β species comes from several post-translational modifications that are also found in characteristic A β deposits in parenchymal extracellular plaques and cerebral amyloid angiopathy (CAA; Saido et al., 1995; Shimizu et al., 2000; Milton, 2001, 2005; Miravalle et al., 2005; Schilling et al., 2008; Wirths et al., 2010; Kumar et al., 2011, 2016; Kummer et al., 2011; Frost et al., 2013). These truncated, elongated, and post-translationally modified A β peptides have peculiar characteristics in aggregation behavior, deposition, and biostability (Kumar and Walter, 2011; Bayer and Wirths, 2014;

Thal et al., 2015; Barykin et al., 2017; Roher et al., 2017; Wirths and Zampar, 2019).

The phosphorylation at Serine residue 8 promotes aggregation, increases neurotoxicity and affects stability and proteolytic degradation of A β (Kumar et al., 2011, 2012; Rezaei-Ghaleh et al., 2016a,b). By using phosphorylation-state specific monoclonal antibodies (mAbs), we showed that phosphorylated Ser8-A β (pSer8A β) accumulates early inside of brain neurons of transgenic APP/PS1 knock-in mice, and is also a prominent component of extracellular plaques during aging (Kumar et al., 2013). The presence of pSer8A β was also demonstrated in the brains of human sporadic AD, FAD, CAA, Down syndrome (DS) cases, non-human primates, canines, and a variety of transgenic mouse models (Kumar et al., 2011, 2018, 2020; Rijal Upadhaya et al., 2014; Ashby et al., 2015; Gerth et al., 2018). A β can also undergo phosphorylation at serine residue 26, which strongly affects its conformation, aggregation, neurotoxicity, and deposition (Milton, 2001; Kumar et al., 2016). Importantly, Ser26-phosphorylated A β (pSer26A β) species assemble into specific oligomeric forms that do not proceed further into larger fibrillar aggregates (Rezaei-Ghaleh et al., 2014, 2016b). pSer26A β occurs *in vivo* in transgenic mouse models of AD and in human AD brains, showing contrasting distribution as compared to non-phosphorylated A β (npA β) peptides. Furthermore, phosphorylation of A β at Ser26 strongly promotes the formation and stabilization of low molecular weight soluble A β oligomers with increased toxicity on human neurons (Kumar et al., 2016).

In the current study, we developed and thoroughly validated novel site- and phosphorylation-state Ser26-A β specific antibodies. Our results show that selected phosphorylation state-specific antibodies recognize Ser26-phosphorylated and non-phosphorylated A β with high specificity in enzyme-linked immunosorbent assay (ELISA), Western Blotting (WB), and immunofluorescence staining. Our study reveals the selective accumulation of pSer26A β species in cerebral blood vessels and intraneuronal deposits in transgenic mouse brains.

MATERIALS AND METHODS

Reagents and Antibodies

Synthetic non-modified and post-translationally modified A β 1–40 and A β 1–42 peptides were purchased from Peptide Specialty Laboratory (Germany). Methanol was from Sigma. Precast 4–12% NuPAGE Bis-Tris mini gels and prestained protein molecular weight markers were from Life technologies. Nitrocellulose membranes were from Schleicher and Schuell (Germany). WB detection reagents were from GE Healthcare (UK) or LiCOR Biosciences. Protease and phosphatase inhibitors were from Roche Laboratories (Germany). BCATM protein assay kit was from Thermo Fisher Scientific (USA). Mouse monoclonal A β antibodies 6E10 and 4G8 were purchased from Covance Laboratories (USA), and 82E1 antibody was from IBL Corporation (Japan). Development and application of rat monoclonal 7H3D6 antibody were described previously (Kumar et al., 2013). The anti-mouse, anti-rabbit secondary antibodies conjugated to horseradish peroxidase were from Sigma-Aldrich (Germany), and anti-rat secondary antibodies

were from Rockland immunochemical (Gilbertsville, PA, USA). Anti-mouse, anti-rabbit, anti-rat 488, 594, and 647 secondary fluorescent antibodies were from Thermo Fisher Scientific. IRDye800CW and IRDye680RD were from LI-COR Biotechnology. The dilutions of each antibody stock are mentioned in the appropriate “Materials and Methods” section or figure legends.

Generation of Phosphorylation-State Specific Antibodies

Phosphorylation-state specific antibodies were generated by immunizing mice or rabbits with synthetic monomeric A β 20-34 peptides with Ser-26 in phosphorylated (antigen sequence: FAEDVG(p)SNKGAIIGC) or non-phosphorylated state (antigen sequence: FAEDVGSNKGAIIGC) conjugated with keyhole limpet hemocyanin (KLH) as an immunogen. Hybridoma cell clones were generated and antibodies were characterized for their specificity against pSer26A β and npA β peptides by indirect ELISA and WB. By protein G affinity chromatography, we purified the antibodies from conditioned media of hybridoma cell lines. Rabbit polyclonal phosphorylation state-specific antibodies were purified from the serum by double-affinity purification using pSer26A β and npA β peptide. The specificity of the purified antibodies was characterized by ELISA and WB.

Preparation of A β Aggregates

Aggregated A β 1–40 variants of npA β and pSer26A β peptides were prepared by dissolving the respective synthetic peptides (100 μ M) in phosphate-buffered saline (PBS) and incubation at 37°C with stirring. Unaggregated A β was obtained immediately after suspending the peptides in PBS and stored after flash freezing in liquid nitrogen until further use. Aggregated A β was collected at different incubation times and also flash-frozen for further use. SDS-PAGE, Native-PAGE, WB, and Thioflavin T (ThT) fluorescence assays were carried out to confirm the unaggregated (0 h) and aggregated (12, 24, 48, 72, and 96 h) state of A β as previously described (Kumar et al., 2011, 2012). Fluorescence intensity was determined using a Varian Cary Eclipse fluorescence spectrophotometer. Excitation and emission wavelengths were set at 446 and 482 nm, respectively. The fluorescence intensity was measured three times for each sample and then the three readings were averaged.

Western Immunoblotting

Synthetic peptides or brain extracts were separated on 4–12% NuPAGE gels and transferred to 0.45 μ m nitrocellulose membranes. The membranes were blocked and incubated sequentially with the indicated primary and secondary antibodies and then developed by enhanced chemiluminescence using ECL imager (BioRad Inc.) or LiCOR Imaging. Quantification was performed by densitometric analysis using Quantity One software (BioRad Inc.).

ELISA Assays

Monomeric npA β and pSer26A β peptides were used as antigens for coating using PBS, pH 7.4, as coating buffer. For the antibody titer evaluation, 1 μ g/ml A β working stock solution was prepared

in PBS and kept on ice. Hundred microliter of antigen solution (npA β and pSer26A β) was added per well and incubated at 4°C for 16 h. After incubation, residual liquid from the plate was removed by gently tapping the plates. Two-hundred microliter blocking buffer (1 mg/ml BSA) was added per well and incubated at 25°C for 2 h, and wells dried again. To measure the antibody titer, 5H11C10 antibody (1 mg/ml) and SA6193 antibody were serially diluted to 1:10, 1:30, 1:90, 1:270, 1:810, 1:2,430, 1:7,290 in coating buffer, added respectively to the wells and incubated at 25°C for 2 h. After the incubation, the wells were washed with 200 μ l of PBS, thrice, and finally, the residual liquid was removed by gentle tapping. Hundred microliter diluted secondary antibodies (Dilution: 1:2,500; anti-mouse IgG-HRP conjugate or anti-rabbit IgG-HRP conjugate) was added to each well respectively and incubated at 25°C for 2 h. After incubation, the wells were washed thoroughly as mentioned above. One-hundred microliters of 3,3',5,5'-tetramethylbenzidine (TMB) substrate was added to each well and the plate incubated at 25°C until sufficient blue color developed. Hundred microliter of stop solution (4 M H₂SO₄) was added to each well and plates were read at a Tecan plate reader at a wavelength of 450 nm and background measurement at 620 nm. Multiple readings were recorded for a single well and averaged. In each experiment, reading for a single sample was recorded in technical triplicates. Data were averaged and plotted as the mean of the readings along with standard deviation ($n = 3$).

For the detection of different concentrations of npA β and pSer26A β peptides by ELISA with 5H11C10 and SA6193 antibodies, Working stock solutions of 2.5, 1.0, 0.5, 0.25, 0.1, 0.05, 0.025 ng/ μ l were prepared and 100 μ l of stock solutions were added per well to achieve final concentrations of 250, 100, 50, 25, 10, 5, 2.5 ng/per well. One-hundred microliters of 5H11C10 and SA6193 antibody solutions (Dilution: 1:250, in blocking buffer) was added to each well. Further incubation steps and measurements were performed as mentioned above.

Protein Extraction and Immunohistochemistry

For biochemical analysis of pSer26A β and npA β variants, full-length APP (Fl-APP), and APP C-terminal fragments (APP-CTFs), whole-brain homogenates from APP/PS1 Δ E9 (Tg) and non-transgenic (WT) mice were prepared as described previously (Kumar et al., 2011). APP/PS1 Δ E9 mice were obtained from the Jackson Laboratories (strain # 005864; Jankowsky et al., 2004). Mice were housed under standard conditions at 22°C and a 12 h–12 h light-dark cycle with free access to food and water. Animal care and handling was performed according to the Declaration of Helsinki and approved by the local ethical committees (LANUV NRW). Briefly, for sequential A β extraction, brain tissue was homogenized with a douncer followed by sonication in RIPA buffer containing protease and phosphatase inhibitors. Homogenates were cleared by centrifugation at 14,000 g for 30 min at 4°C. After centrifugation, the resulting supernatant containing water-soluble proteins was aliquoted, saved at –80°C for further usage and the pellet was re-homogenized in 2% SDS in 50 mM Tris buffer (pH 7.3) supplemented with protease and

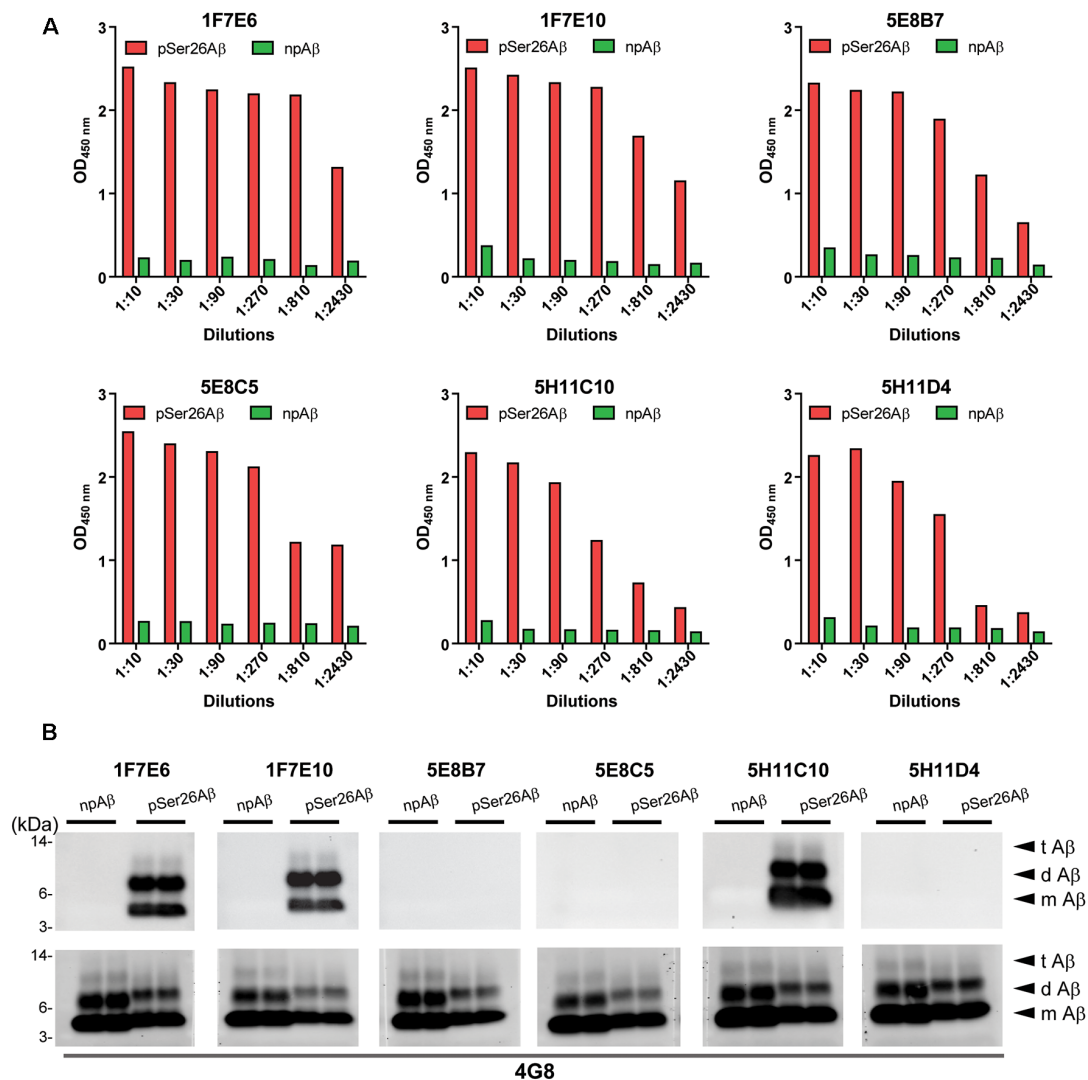


FIGURE 1 | Screening hybridomas secreting anti-pSer26A β monoclonal antibodies. **(A)** Enzyme-linked immunosorbent assay (ELISA) assay of hybridoma supernatants with synthetic pSer26A β and npA β peptides demonstrate specific reactivity against the pSer26A β peptides even at higher dilutions. Six hybridoma clones demonstrate a positive reaction to the pSer26A β peptide. **(B)** Western Blotting (WB) analysis of synthetic npA β and pSer26A β peptides (200 ng) with hybridoma supernatants shows the specific detection of monomeric (m A β), dimeric (d A β), and trimeric (t A β) species of pSer26A β by three hybridoma clones. 5H11C10 demonstrates the highest reactivity. Reprobing of the blot with generic A β antibody 4G8 was used to detect both npA β and pSer26A β peptide variants.

phosphatase inhibitors followed by sonication and centrifuged as described above. The resultant supernatant SDS extract was aliquoted and stored at -80°C .

Immunofluorescence analyses of mouse brains were performed on 20 μm sagittal paraformaldehyde (PFA) fixed sections as described previously (Kumar et al., 2013, 2016). For immunofluorescence staining, the brain tissue sections were washed twice with $1\times$ PBS and then subjected to antigen retrieval methods using reveal decloaker (Biocare Medical #RV1000) followed by permeabilization by using 0.25% triton x-100 in PBS for 30 min. Non-specific binding sites were blocked by treatment with 5% normal horse serum with 2.5% bovine serum albumin in PBS, before the

addition of the primary antibodies. Mouse on Mouse (M.O.M) blocking reagent (Vector Laboratories, MKB-2213) was used for primary antibodies generated in mouse or rat (dilutions: 1:250). The primary antibodies were incubated overnight in a humid chamber at 4°C followed by incubation with an appropriate fluorescently tagged secondary antibody. After incubation, tissue sections were mounted onto slides by using VECTASHIELD Antifade mounting medium with 4',6-Diamidino-2'-phenylindole dihydrochloride (DAPI). The z-stack images ($10\times$ magnification, $2,048 \times 2,048$ resolution, steps = 49, and size = 2) were acquired by using the Visitron VisiScope spinning disk confocal microscope at $10\times$ magnification.

RESULTS

Screening of Anti-pSer26A β Monoclonal Antibodies

Hybridoma culture supernatants were screened for pSer26A β specific antibodies by indirect ELISA using synthetic pSer26A β and npA β peptides. A total of six hybridoma clones showed a positive reaction with the pSer26A β peptide (**Figure 1A**). Then, WB was employed to further validate the monoclonal antibodies. npA β and pSer26A β peptides were electrophoresed and immunoblotted with hybridoma supernatants. The results showed that only three hybridoma clones among six that were positive in ELISA detect pSer26A β peptides by WB (**Figure 1B**). All three clones were highly specific for Ser26-phosphorylated A β and recognized monomeric, dimeric, and trimeric species of the pSer26A β peptide. **Table 1** summarizes the class, and subclass of the hybridoma clones, demonstrating that the antibodies all belong to IgG1 (5E8B7, 5E8C5, 5H11C10, 5H11D4) or IgG2a (1F7E6 and 1F7E10), subclass with kappa light chain (**Table 1**).

Purification and Titer of Purified pSer26A β mAb 5H11C10

As 5H11C10 has the highest reactivity and titer among all of the clones in WB, this mAb was purified by fast protein liquid chromatography (FPLC) using protein G Sepharose columns. SDS-PAGE analysis shows two bands in lanes 4, 5, and 6 with a molecular weight of 50 and 25 kDa, which correspond to the molecular weights of IgG heavy chain and light chain (**Supplementary Figure 1**). Indirect ELISA analysis showed that the titer in hybridoma supernatants against pSer26A β was 2.04×10^7 (**Figure 2A**), and purified antibody titer was 1.28×10^6 (**Figure 2B**). WB and ELISA analysis with purified 5H11C10 antibody also demonstrated this antibody to be highly specific for pSer26A β peptide (**Figures 2C,D** and **Supplementary Figures 2A, 3A**). In addition to monomeric and dimeric pSer26A β , the 5H11C10 antibody also detected aggregated forms in a phosphorylation state-dependent manner (**Figure 2E** and **Supplementary Figure 4**). WB analysis revealed that antibody 5H11C10 also does not recognize the aggregates of non-phosphorylated A β when compared to the phosphorylation state-independent monoclonal antibody 82E1 (**Supplementary Figure 4**). Importantly, antibody 5H11C10 specifically detects A β variants phosphorylated at Ser26 residue and did not cross-react with other truncated and/or post-translationally modified variants of A β variants not phosphorylated at Ser26 residue (**Figure 2F** and **Supplementary Figure 3B**).

Generation and Characterization of Non-phosphorylated Ser26A β Specific Antibodies

To facilitate specific detection of non-phosphorylated Ser26A β (npA β) and to allow co-staining with the mouse monoclonal antibody 5H11C10, we also generated polyclonal antibodies from rabbits. Antibody SA6193 obtained from immunizations of rabbits with npA β showed very high specificity for A β not phosphorylated at Ser-26 in both WB (**Figure 3A**

TABLE 1 | Ig classes and subclasses, and titer of monoclonal antibodies against pSer26A β .

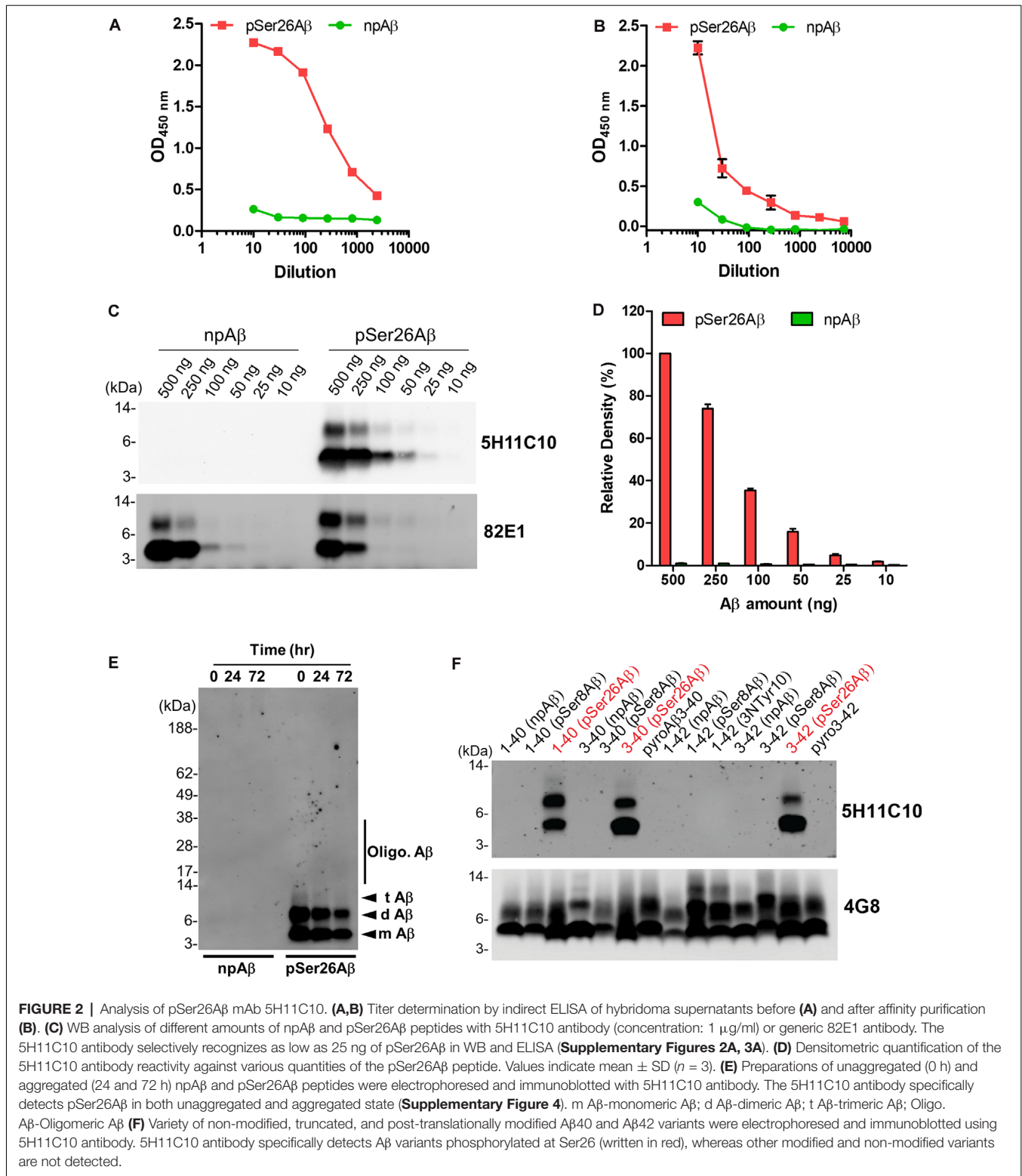
Hybridoma	Class and subclass	Titer of supernatant of cell culture medium
1F7E6	IgG2a, k	>1:2,430 (pSer26A β); 0 (npA β)
1F7E10	IgG2a, k	>1:2,430 (pSer26A β); >1:10 (npA β)
5E8B7	IgG1, k	>1:2,430 (pSer26A β); >1:10 (npA β)
5E8C5	IgG1, k	>1:2,430 (pSer26A β); 0 (npA β)
5H11C10	IgG1, k	>1:2,430 (pSer26A β); 0 (npA β)
5H11D4	IgG1, k	>1:2,430 (pSer26A β); >1:10 (npA β)

Starting dilution: 1:10. The titer is the highest dilution with P/N (Positive/Negative) ≥ 2.1 .

and **Supplementary Figure 3**) and ELISA (**Figure 3B**). Western immunoblot analysis and ELISA of the different concentrations of npA β and pSer26A β peptides showed that purified SA6193 antibody was highly specific for A β peptides not phosphorylated at Ser26 (**Figures 3C,D** and **Supplementary Figure 2B**). This antibody also specifically detected A β aggregates with Ser-26 in a non-phosphorylated state (**Figure 3E**). Notably, SA6193 antibody detects all of the tested non-modified (A β 1–40 or A β 1–42), truncated (A β 3–40 or A β 3–42) and modified A β 40 or A β 42 variants that carry post-translational modifications in their N-terminal regions, including pSer8A β , nitrated and pyroglutamate A β , but does not cross-react with A β variants that are phosphorylated at Ser26 residue (**Figure 3F** and **Supplementary Figure 3B**). Together, these data demonstrate that the rabbit polyclonal antibody SA6193 is highly specific for A β variants not phosphorylated at Ser26 residue.

Phosphorylation State-Specific Antibodies Demonstrate the Presence of pSer26A β Peptides in Transgenic Mouse Models of AD

We took advantage of these antibodies to characterize the deposition of pSer26A β and npA β in transgenic mouse brains. WB analysis of brain extracts from APP/PS1 Δ E9 transgenic mice with 5H11C10 and SA6193 antibodies showed the presence of pSer26A β and npA β peptides in SDS-soluble fractions (predominantly containing intracellular and membrane-associated A β) at 12 months of age (**Figures 4A,B**). A β reactivity was not detected in non-transgenic mouse brains with both antibodies. Furthermore, both antibodies did not show any reactivity against full-length APP or its C-terminal fragments in brain extracts of transgenic mice, suggesting selective phosphorylation of Ser26 after the generation of A β . In contrast, other commonly used monoclonal antibodies 6E10 or 4G8 also recognized the full-length APP or the APP-CTF (**Figures 4C,D**). Furthermore, immunofluorescence staining with the phosphorylation state-specific antibodies demonstrates the deposition of pSer26A β aggregates in the APP/PS1 Δ E9 transgenic mouse brains (**Figures 4E,F**). pSer26A β species were faintly detected in A β plaques (**Figures 4E,F**; arrowheads). Interestingly, immunostaining revealed deposition of pSer26A β the cerebral vasculature (**Figures 4E,F**; arrows) and intraneuronally (**Figures 4E,F**; asterisks). Additional immunofluorescence staining with 5H11C10 together with



generic A β antibodies further confirms the intraneuronal accumulation as well as pronounced deposition of pSer26A β in the blood vessels in APP/PS1 Δ E9 transgenic mouse brains (**Supplementary Figure 5**). Detection of pSer26A β by the

antibody 5H11C10 was efficiently blocked by pre-adsorption with synthetic pSer26A β , further demonstrating the specificity of this antibody in the detection of pSer26A β deposits (**Supplementary Figure 6**).

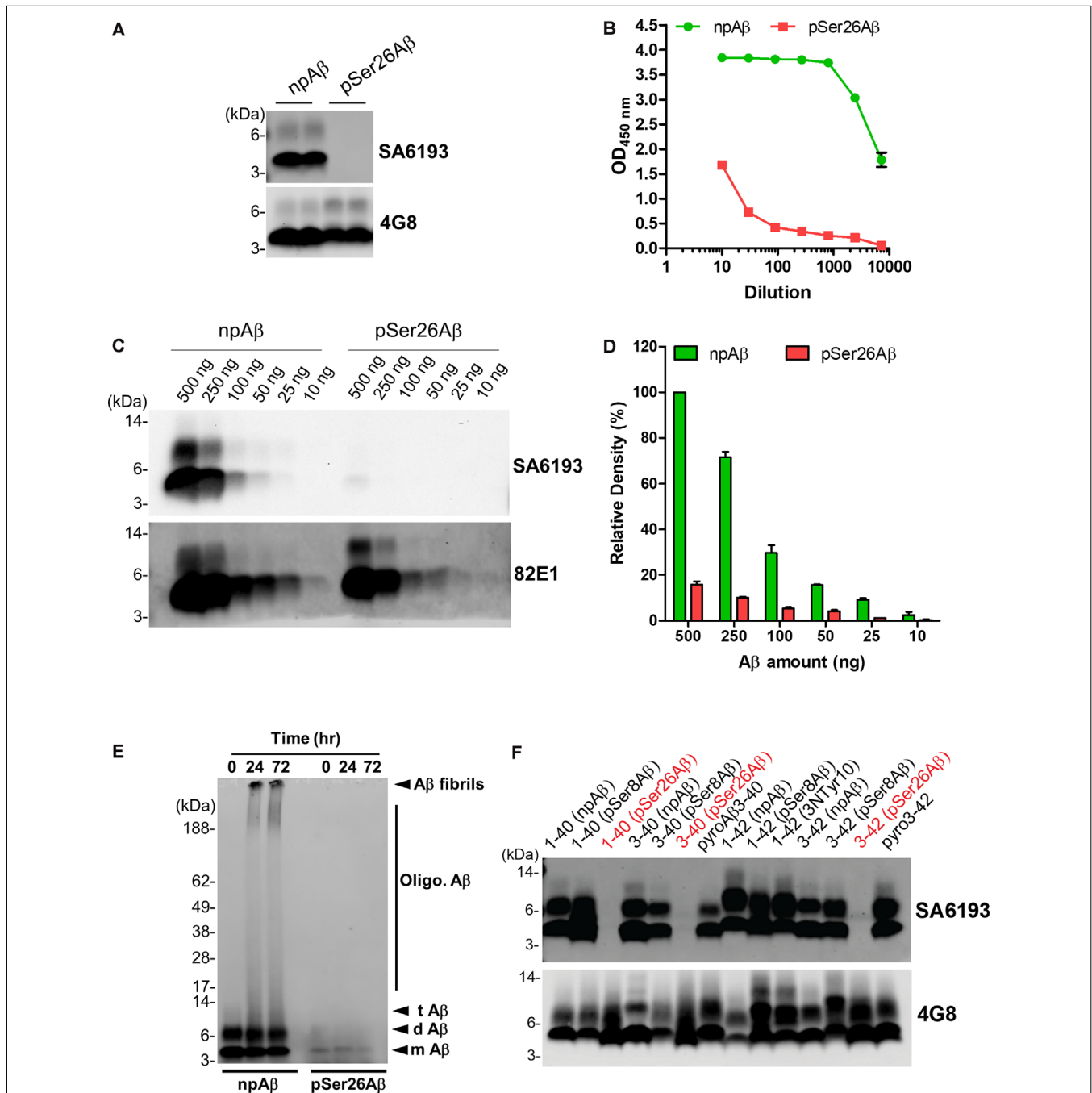
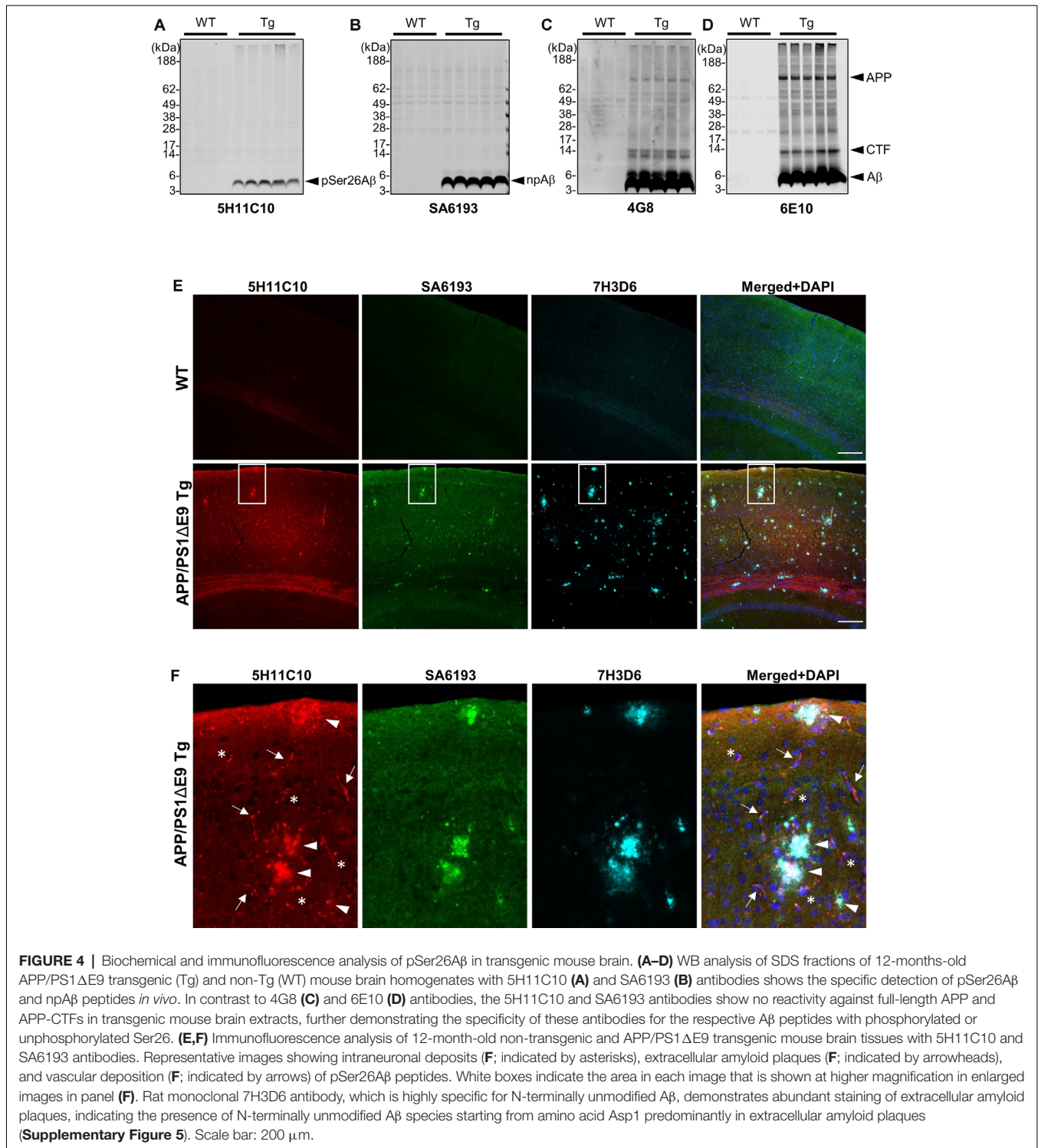


FIGURE 3 | Characterization of the non-phosphorylated Ser26A β specific polyclonal SA6193 antibody. **(A)** WB analysis of synthetic npA β and pSer26A β peptides (200 ng) with rabbit sera shows the specific detection of npA β by SA6193 rabbit polyclonal antibody. Reprobing of the blot with generic 82E1 antibody shows the presence of both npA β and pSer26A β variants. **(B)** Purified SA6193 antibody binding assessed by serial dilution of antibody on ELISA plates that were coated with npA β and pSer26A β antigen. **(C)** WB analysis of different quantities of npA β and pSer26A β peptides with SA6193 antibody or 82E1 antibody. The SA6193 antibody selectively recognizes npA β monomers and dimers. SA6193 antibody selectively detects npA β as low as 25 ng in WB **(C)** and ELISA **(Supplementary Figure 2B)**. The membrane immunoprobed with 82E1 antibody shows the presence of both A β variants. **(D)** Densitometry quantification of the SA6193 antibody shows the reactivity against various quantities of the npA β peptide. Values indicate mean \pm SD ($n = 3$). **(E)** Preparations of unaggregated (0 h) and aggregated (24 and 72 h) npA β and pSer26A β peptides were electrophoresed and immunoblotted with SA6193 antibody. The SA6193 antibody specifically detects npA β in both unaggregated and aggregated state **(Supplementary Figure 4)**. m A β -monomeric A β ; d A β -dimeric A β ; t A β -trimeric A β ; Oligo. A β -Oligomeric A β **(F)** Variety of non-modified, truncated, and post-translationally modified A β 40 and A β 42 variants were electrophoresed and immunoblotted with SA6193 antibody. SA6193 antibody does not cross-react with A β variants that are phosphorylated at Ser26 residue but detects all of the tested non-modified (A β 1-40 or A β 1-42), truncated (A β 3-40 or A β 3-42) and modified A β 40 and A β 42 variants that carry other PTMs in their N-terminal regions, including phosphorylated Ser8-A β , nitrated and pyroglutamate A β **(Supplementary Figure 3)**.



DISCUSSION

Here, we developed and validated novel site- and phosphorylation state-specific Ser26A β antibodies. The pSer26A β -specific mAb 5H11C10 demonstrates that pSer26A β is particularly accumulated in vessels and intraneuronal deposits

that also contain npA β , but much less in extracellular plaques as compared to unphosphorylated or otherwise modified A β species in the brain of APP/PS1 Δ E9 transgenic mice.

The amyloid cascade hypothesis describes that the accumulation and aggregation of A β peptides into oligomeric or fibrillar structures is initiating the disease process and triggers

a complex pathological cascade that ultimately leads to the development of clinical dementia (Braak and Braak, 1991; Thal et al., 2006; Haass and Selkoe, 2007; Walsh and Selkoe, 2007; Braak et al., 2011; Benilova et al., 2012; Viola and Klein, 2015; Katsnelson et al., 2016; Selkoe and Hardy, 2016; De Strooper and Karran, 2016; DeTure and Dickson, 2019; Jellinger, 2020). The accumulation of age-dependent post-translational modifications in A β may be contributing factors to aggregation and toxicity, and thus to the pathogenesis of AD (Thal et al., 2015; Barykin et al., 2017; Roher et al., 2017; Schaffert and Carter, 2020). Various modified A β species are detected in the brains of human AD patients, DS cases, transgenic AD mouse and natural animal species that develop A β related pathology (Saido et al., 1995, 1996; Iwatsubo et al., 1996; Russo et al., 1997; Tekirian et al., 1998; Fonseca et al., 1999; Shimizu et al., 2000; Schilling et al., 2008; Wirths et al., 2010; Saito et al., 2011; Frost et al., 2013; Kumar et al., 2013, 2016, 2020). Some of the modified species are also observed intraneuronally, years before plaque development, NFT formation, and synaptic loss (Wirths et al., 2004, 2010; Bayer and Wirths, 2010; Jawhar et al., 2011; Li et al., 2018). Post-translational modifications could accelerate the oligomerization and fibrillization of A β and thereby increase synaptic impairment and neurotoxicity, and the deposition in AD characteristic lesions. The differential deposition of modified A β variants is also associated with different stages of AD pathogenesis (Rijal Upadhaya et al., 2014; Gerth et al., 2018).

Phosphorylation of A β has been identified at the two serine residues within the A β 1–40/42 peptide, Ser-8 and Ser-26 (Milton, 2001, 2005; Kumar and Walter, 2011; Kumar et al., 2011, 2016). Phosphorylation of A β alters its conformation, aggregation, stability, neurotoxicity, proteolytic degradation and deposition (Kumar et al., 2011, 2012; Rijal Upadhaya et al., 2014; Ashby et al., 2015; Rezaei-Ghaleh et al., 2016a,b). Immunohistochemical and immunofluorescence stainings demonstrated the occurrence of pSer8A β and pSer26A β *in vivo* in the brains of human AD patients (Rijal Upadhaya et al., 2014; Ashby et al., 2015; Gerth et al., 2018), DS cases (Kumar et al., 2020), non-human primates and canines (Kumar et al., 2018). Notably, the detection of pSer8A β , together with pyroglutamate modified A β in brain sections or brain homogenates has been recently explored to establish a staging system for AD pathology based on the sequential deposition of these modified A β variants during the pathogenesis of AD (Rijal Upadhaya et al., 2014; Thal et al., 2015, 2019; Gerth et al., 2018). Notably, the biochemical detection of phosphorylated A β species in human brains was associated with the symptomatic phase, implying that the accumulation of phosphorylated A β correlates with *in vitro* and *in vivo* studies that have demonstrated accelerated aggregation and increased neurotoxicity of phosphorylated A β peptides (Kumar et al., 2011, 2016). Thus, changes in the biochemical or biophysical properties of A β induced by phosphorylation may represent critical events in the pathogenesis of AD.

Site- and phosphorylation state-specific antibodies serve as important tools to investigate the spatial and temporal distribution of protein modifications in tissues or cells, and to examine their biological function (Mandell, 2003; Goto and

Inagaki, 2007, 2014; Kumar et al., 2013). Our previous study demonstrated that phosphorylation at Ser-26 results in the formation of low and intermediate molecular weight soluble oligomers that remain as non-fibrillar assemblies and do not produce high molecular weight A β oligomers or fibrils (Kumar et al., 2016). These aggregation characteristics are reminiscent of findings on Osaka (A β E22 Δ) or Dutch (A β E22Q) mutant A β variants that also exhibit enhanced oligomerization without fibrillization (Watson et al., 1999; Baumketner et al., 2008; Fawzi et al., 2008; Tomiyama et al., 2008; Kamp et al., 2014). These A β species also are detected intracellularly and in the vasculature with limited deposition in extracellular plaques (Herzig et al., 2001; Davis et al., 2004; Tomiyama et al., 2010; Kulic et al., 2012), very similar to the behavior of pSer26A β peptides. The amino acid residue Glu22 and Ser26 are located close to or within the β -turn motif, which plays a crucial role in A β monomer folding and oligomerization. Especially, the formation of the turn/bend-like structure from Gly25 to Gly29 is important for fibrillization of A β and is one of the earliest events in A β self-association. Ser26 is located at the center of the turn motif and we demonstrated that phosphorylation at Ser26 interferes with the formation of a fibril-specific salt-bridge between amino acid residues Asp23 and Lys28 (Rezaei-Ghaleh et al., 2014). The introduction of a negatively charged phosphate group at Ser26 may additionally cause intermolecular repulsive interactions that prevent or destabilize fibrillar conformations and thereby promote the formation of soluble non-fibrillar A β oligomers. Thus, oligomers formed by pSer26A β might not be incorporated in fibrillary assemblies found in extracellular plaques, but accumulate inside of neurons or the vasculature, and it will be interesting to further analyze the specific role of this A β species in AD pathogenesis.

Dysregulation of post-translational modifications is associated with age-related processes and contributes to age-related diseases including AD. Thus, the site- and phosphorylation-state specific antibodies against amino acid Ser26 of the A β peptide described here could facilitate investigations on the role of pSer26A β in the complex pathobiology of AD.

DATA AVAILABILITY STATEMENT

The original contributions presented in the study are included in the article/**Supplementary Materials**, further inquiries can be directed to the corresponding author/s.

ETHICS STATEMENT

The animal care and handling was performed according to the Declaration of Helsinki and approved by the local ethical committees (LANUV NRW).

AUTHOR CONTRIBUTIONS

SK and JW conceived the study, acquired funding, and wrote the manuscript. SK, AK, ST, PJ, and FR performed experiments and

analyzed data. MTH provided mouse brain tissues. All authors contributed to the article and approved the submitted version.

FUNDING

We acknowledge Deutsche Forschungsgemeinschaft [grant #WA1477/6-3 (JW)] and the Alzheimer Forschungs Initiative e.V. [grants #12854 and #17011 (SK)] for research funding.

REFERENCES

- Alzheimer's Association. (2020). 2020 Alzheimer's disease facts and figures. *Alzheimers Dement.* 16, 391–460. doi: 10.1002/alz.12068
- Ashby, E. L., Miners, J. S., Kumar, S., Walter, J., Love, S., and Kehoe, P. G. (2015). Investigation of A β phosphorylated at serine 8 (pA β) in Alzheimer's disease, dementia with Lewy bodies and vascular dementia. *Neuropathol. Appl. Neurobiol.* 41, 428–444. doi: 10.1111/nan.12212
- Barykin, E. P., Mitkevich, V. A., Kozin, S. A., and Makarov, A. A. (2017). Amyloid β modification: a key to the sporadic Alzheimer's disease? *Front. Genet.* 8:58. doi: 10.3389/fgene.2017.00058
- Bateman, R. J., Aisen, P. S., De Strooper, B., Fox, N. C., Lemere, C. A., Ringman, J. M., et al. (2011). Autosomal-dominant Alzheimer's disease: a review and proposal for the prevention of Alzheimer's disease. *Alzheimers Res. Ther.* 3:1. doi: 10.1186/alzrt59
- Baumketner, A., Krone, M. G., and Shea, J.-E. (2008). Role of the familial Dutch mutation E22Q in the folding and aggregation of the 15–28 fragment of the Alzheimer amyloid- β protein. *Proc. Natl. Acad. Sci. U S A* 105, 6027–6032. doi: 10.1073/pnas.0708193105
- Bayer, T. A., and Wirths, O. (2010). Intracellular accumulation of amyloid- β —a predictor for synaptic dysfunction and neuron loss in Alzheimer's disease. *Front. Aging Neurosci.* 2:8. doi: 10.3389/fnagi.2010.00008
- Bayer, T. A., and Wirths, O. (2014). Focusing the amyloid cascade hypothesis on N-truncated A β peptides as drug targets against Alzheimer's disease. *Acta Neuropathol.* 127, 787–801. doi: 10.1007/s00401-014-1287-x
- Becker-Pauly, C., and Pietrzik, C. U. (2017). The metalloprotease meprin β is an alternative β -secretase of APP. *Front. Mol. Neurosci.* 9:159. doi: 10.3389/fnmol.2016.00159
- Belloy, M. E., Napolioni, V., and Greicius, M. D. (2019). A quarter century of APOE and Alzheimer's disease: progress to date and the path forward. *Neuron* 101, 820–838. doi: 10.1016/j.neuron.2019.01.056
- Benilova, L., Karran, E., and De Strooper, B. (2012). The toxic A β oligomer and Alzheimer's disease: an emperor in need of clothes. *Nat. Neurosci.* 15, 349–357. doi: 10.1038/nn.3028
- Bettens, K., Sleegers, K., and van Broeckhoven, C. (2013). Genetic insights in Alzheimer's disease. *Lancet Neurol.* 12, 92–104. doi: 10.1016/S1474-4422(12)70259-4
- Braak, H., and Braak, E. (1991). Neuropathological staging of Alzheimer-related changes. *Acta Neuropathol.* 82, 239–259. doi: 10.1007/BF00308809
- Braak, H., Thal, D. R., Ghebremedhin, E., and Del Tredici, K. (2011). Stages of the pathologic process in Alzheimer disease: age categories from 1 to 100 years. *J. Neuropathol. Exp. Neurol.* 70, 960–969. doi: 10.1097/NEN.0b013e318232a379
- Calderon-Garcidueñas, A. L., and Duyckaerts, C. (2017). Alzheimer disease. *Handb. Clin. Neurol.* 145, 325–337. doi: 10.1016/B978-0-12-802395-2.00023-7
- Davidson, Y. S., Robinson, A., Prasher, V. P., and Mann, D. M. A. (2018). The age of onset and evolution of Braak tangle stage and thal amyloid pathology of Alzheimer's disease in individuals with Down syndrome. *Acta Neuropathol. Commun.* 6:56. doi: 10.1186/s40478-018-0559-4
- Davis, J., Xu, F., Deane, R., Romanov, G., Previti, M. L., Zeigler, K., et al. (2004). Early-onset and robust cerebral microvascular accumulation of amyloid beta-protein in transgenic mice expressing low levels of a vasculotropic Dutch/Iowa mutant form of amyloid beta-protein precursor. *J. Biol. Chem.* 279, 20296–20306. doi: 10.1074/jbc.M312946200

ACKNOWLEDGMENTS

We thank the Microscopy Core Facility of the Medical Faculty at the University of Bonn for providing their help and services.

SUPPLEMENTARY MATERIAL

The Supplementary Material for this article can be found online at: <https://www.frontiersin.org/articles/10.3389/fnmol.2020.619639/full#supplementary-material>.

- DeTure, M. A., and Dickson, D. W. (2019). The neuropathological diagnosis of Alzheimer's disease. *Mol. Neurodegener.* 14:32. doi: 10.1186/s13024-019-0333-5
- Dunys, J., Valverde, A., and Checler, F. (2018). Are N- and C-terminally truncated A β species key pathological triggers in Alzheimer's disease? *J. Biol. Chem.* 293, 15419–15428. doi: 10.1074/jbc.R118.003999
- Duyckaerts, C., Delatour, B., and Potier, M.-C. (2009). Classification and basic pathology of Alzheimer disease. *Acta Neuropathol.* 118, 5–36. doi: 10.1007/s00401-009-0532-1
- Fawzi, N. L., Kohlstedt, K. L., Okabe, Y., and Head-Gordon, T. (2008). Protofibril assemblies of the arctic, Dutch and Flemish mutants of the Alzheimer's A β 1–40 peptide. *Biophys. J.* 94, 2007–2016. doi: 10.1529/biophysj.107.121467
- Fonseca, M. I., Head, E., Velazquez, P., Cotman, C. W., and Tenner, A. J. (1999). The presence of isoaspartic acid in β -amyloid plaques indicates plaque age. *Exp. Neurol.* 157, 277–288. doi: 10.1006/exnr.1999.7058
- Frost, J. L., Le, K. X., Cynis, H., Ekpo, E., Kleinschmidt, M., Palmour, R. M., et al. (2013). Pyroglutamate-3 amyloid- β deposition in the brains of humans, non-human primates, canines and Alzheimer disease-like transgenic mouse models. *Am. J. Pathol.* 183, 369–381. doi: 10.1016/j.ajpath.2013.05.005
- Geddes, J. W., Tekirian, T. L., and Mattson, M. P. (1999). N-terminus truncated beta-amyloid peptides and C-terminus truncated secreted forms of amyloid precursor protein: distinct roles in the pathogenesis of Alzheimer's disease. *Neurobiol. Aging* 20, 75–79. doi: 10.1016/s0197-4580(99)00012-3
- Gerth, J., Kumar, S., Rijal Upadhaya, A., Ghebremedhin, E., von Arnim, C. A. F., Thal, D. R., et al. (2018). Modified amyloid variants in pathological subgroups of β -amyloidosis. *Ann. Clin. Transl. Neurol.* 5, 815–831. doi: 10.1002/acn3.577
- Glennier, G. G., and Wong, C. W. (2012). Alzheimer's disease: initial report of the purification and characterization of a novel cerebrovascular amyloid protein. 1984. *Biochem. Biophys. Res. Commun.* 425, 534–539. doi: 10.1016/j.bbrc.2012.08.020
- Goedert, M. (2018). Tau filaments in neurodegenerative diseases. *FEBS Lett.* 592, 2383–2391. doi: 10.1002/1873-3468.13108
- Goto, H., and Inagaki, M. (2007). Production of a site- and phosphorylation state-specific antibody. *Nat. Protoc.* 2, 2574–2581. doi: 10.1038/nprot.2007.374
- Goto, H., and Inagaki, M. (2014). Method for the generation of antibodies specific for site and posttranslational modifications. *Methods Mol. Biol.* 1131, 21–31. doi: 10.1007/978-1-62703-992-5_2
- Grant, M. A., Lazo, N. D., Lomakin, A., Condron, M. M., Arai, H., Yamin, G., et al. (2007). Familial Alzheimer's disease mutations alter the stability of the amyloid beta-protein monomer folding nucleus. *Proc. Natl. Acad. Sci. U S A* 104, 16522–16527. doi: 10.1073/pnas.0705197104
- Haass, C., and Selkoe, D. J. (2007). Soluble protein oligomers in neurodegeneration: lessons from the Alzheimer's amyloid β -peptide. *Nat. Rev. Mol. Cell Biol.* 8, 101–112. doi: 10.1038/nrm2101
- Harper, J. D., and Lansbury, P. T. Jr. (1997). Models of amyloid seeding in Alzheimer's disease and scrapie: mechanistic truths and physiological consequences of the time-dependent solubility of amyloid proteins. *Annu. Rev. Biochem.* 66, 385–407. doi: 10.1146/annurev.biochem.66.1.385
- Herzig, M. C., Winkler, D. T., Walker, L. C., and Jucker, M. (2001). Transgenic mouse models of cerebral amyloid angiopathy. *Adv. Exp. Med. Biol.* 487, 123–128. doi: 10.1007/978-1-4615-1249-3_10
- Hunter, S., and Brayne, C. (2018). Understanding the roles of mutations in the amyloid precursor protein in Alzheimer disease. *Mol. Psychiatry* 23, 81–93. doi: 10.1038/mp.2017.218

- Iwatsubo, T., Saido, T. C., Mann, D. M., Lee, V. M., and Trojanowski, J. Q. (1996). Full-length amyloid- β (1-42(43)) and amino-terminally modified and truncated amyloid- β 42(43) deposit in diffuse plaques. *Am. J. Pathol.* 149, 1823–1830.
- Jankowsky, J. L., Fadale, D. J., Anderson, J., Xu, G. M., Gonzales, V., Jenkins, N. A., et al. (2004). Mutant presenilins specifically elevate the levels of the 42 residue β -amyloid peptide *in vivo*: evidence for augmentation of a 42-specific gamma secretase. *Hum. Mol. Genet.* 13, 159–170. doi: 10.1093/hmg/ddh019
- Jawhar, S., Wirths, O., and Bayer, T. A. (2011). Pyroglutamate amyloid- β (A β): a hatchet man in Alzheimer disease. *J. Biol. Chem.* 286, 38825–38832. doi: 10.1074/jbc.R111.288308
- Jellinger, K. A. (2020). Neuropathological assessment of the Alzheimer spectrum. *J. Neural. Transm.* 127, 1229–1256. doi: 10.1007/s00702-020-02232-9
- Kamp, J. A., Moursel, L. G., Haan, J., Terwindt, G. M., Lesnik Oberstein, S. A. M. J., van Duinen, S. G., et al. (2014). Amyloid β in hereditary cerebral hemorrhage with amyloidosis-Dutch type. *Rev. Neurosci.* 25, 641–651. doi: 10.1515/revneuro-2014-0008
- Karch, C. M., Cruchaga, C., and Goate, A. M. (2014). Alzheimer's disease genetics: from the bench to the clinic. *Neuron* 83, 11–26. doi: 10.1016/j.neuron.2014.05.041
- Katsnelson, A., De Strooper, B., and Zoghbi, H. Y. (2016). Neurodegeneration: from cellular concepts to clinical applications. *Sci. Transl. Med.* 8:364ps18. doi: 10.1126/scitranslmed.aal2074
- Kulic, L., McAfoose, J., Welt, T., Tackenberg, C., Späni, C., Wirth, F., et al. (2012). Early accumulation of intracellular fibrillar oligomers and late congophilic amyloid angiopathy in mice expressing the Osaka intra-A β APP mutation. *Transl. Psychiatry* 2:e183. doi: 10.1038/tp.2012.109
- Kumar, S., Frost, J. L., Cotman, C. W., Head, E., Palmour, R., Lemere, C. A., et al. (2018). Deposition of phosphorylated amyloid- β in brains of aged nonhuman primates and canines. *Brain Pathol.* 28, 427–430. doi: 10.1111/bpa.12573
- Kumar, S., Lemere, C. A., and Walter, J. (2020). Phosphorylated A β peptides in human down syndrome brain and different Alzheimer's-like mouse models. *Acta Neuropathol. Commun.* 8:118. doi: 10.1186/s40478-020-00959-w
- Kumar, S., Rezaei-Ghaleh, N., Terwel, D., Thal, D. R., Richard, M., Hoch, M., et al. (2011). Extracellular phosphorylation of the amyloid β -peptide promotes formation of toxic aggregates during the pathogenesis of Alzheimer's disease. *EMBO J.* 30, 2255–2265. doi: 10.1038/emboj.2011.138
- Kumar, S., Singh, S., Hinze, D., Josten, M., Sahl, H.-G., Siepmann, M., et al. (2012). Phosphorylation of amyloid- β peptide at serine 8 attenuates its clearance via insulin-degrading and angiotensin-converting enzymes. *J. Biol. Chem.* 287, 8641–8651. doi: 10.1074/jbc.M111.279133
- Kumar, S., and Walter, J. (2011). Phosphorylation of amyloid beta (A β) peptides—a trigger for formation of toxic aggregates in Alzheimer's disease. *Aging* 3, 803–812. doi: 10.18632/aging.100362
- Kumar, S., Wirths, O., Stüber, K., Wunderlich, P., Koch, P., Theil, S., et al. (2016). Phosphorylation of the amyloid β -peptide at Ser26 stabilizes oligomeric assembly and increases neurotoxicity. *Acta Neuropathol.* 131, 525–537. doi: 10.1007/s00401-016-1546-0
- Kumar, S., Wirths, O., Theil, S., Gerth, J., Bayer, T. A., and Walter, J. (2013). Early intraneuronal accumulation and increased aggregation of phosphorylated A β in a mouse model of Alzheimer's disease. *Acta Neuropathol.* 125, 699–709. doi: 10.1007/s00401-013-1107-8
- Kummer, M. P., Hermes, M., Delekarte, A., Hammerschmidt, T., Kumar, S., Terwel, D., et al. (2011). Nitration of tyrosine 10 critically enhances amyloid β aggregation and plaque formation. *Neuron* 71, 833–844. doi: 10.1016/j.neuron.2011.07.001
- Lansbury, P. T., and Lashuel, H. A. (2006). A century-old debate on protein aggregation and neurodegeneration enters the clinic. *Nature* 443, 774–779. doi: 10.1038/nature05290
- Li, S., Jin, M., Liu, L., Dang, Y., Ostaszewski, B. L., and Selkoe, D. J. (2018). Decoding the synaptic dysfunction of bioactive human AD brain soluble A β to inspire novel therapeutic avenues for Alzheimer's disease. *Acta Neuropathol. Commun.* 6:121. doi: 10.1186/s40478-018-0626-x
- Mandell, J. W. (2003). Phosphorylation state-specific antibodies: applications in investigative and diagnostic pathology. *Am. J. Pathol.* 163, 1687–1698. doi: 10.1016/S0002-9440(10)63525-0
- Mann, D. M., and Iwatsubo, T. (1996). Diffuse plaques in the cerebellum and corpus striatum in down's syndrome contain amyloid β protein (A β) only in the form of A β 42 (43). *Neurodegeneration* 5, 115–120. doi: 10.1006/neur.1996.0017
- Masters, C. L., Simms, G., Weinman, N. A., Multhaup, G., McDonald, B. L., and Beyreuther, K. (1985). Amyloid plaque core protein in Alzheimer disease and down syndrome. *Proc. Natl. Acad. Sci. U S A* 82, 4245–4249. doi: 10.1073/pnas.82.12.4245
- Milton, N. G. (2001). Phosphorylation of amyloid- β at the serine 26 residue by human cdc2 kinase. *Neuroreport* 12, 3839–3844. doi: 10.1097/00001756-200112040-00047
- Milton, N. G. N. (2005). Phosphorylated amyloid- β : the toxic intermediate in Alzheimer's disease neurodegeneration. *Subcell. Biochem.* 38, 381–402. doi: 10.1007/0-387-23226-5_20
- Miravalle, L., Calero, M., Takao, M., Roher, A. E., Ghetti, B., and Vidal, R. (2005). Amino-terminally truncated A β peptide species are the main component of cotton wool plaques. *Biochemistry* 44, 10810–10821. doi: 10.1021/bi0508237
- Moro, M. L., Giaccone, G., Lombardi, R., Indaco, A., Uggetti, A., Morbin, M., et al. (2012). APP mutations in the A β coding region are associated with abundant cerebral deposition of A β 38. *Acta Neuropathol.* 124, 809–821. doi: 10.1007/s00401-012-1061-x
- Ray, W. J., Ashall, F., and Goate, A. M. (1998). Molecular pathogenesis of sporadic and familial forms of Alzheimer's disease. *Mol. Med. Today* 4, 151–157. doi: 10.1016/s1357-4310(98)01229-5
- Rezaei-Ghaleh, N., Amininasab, M., Giller, K., Kumar, S., Stundl, A., Schneider, A., et al. (2014). Turn plasticity distinguishes different modes of amyloid- β aggregation. *J. Am. Chem. Soc.* 136, 4913–4919. doi: 10.1021/ja411707y
- Rezaei-Ghaleh, N., Amininasab, M., Kumar, S., Walter, J., and Zweckstetter, M. (2016a). Phosphorylation modifies the molecular stability of β -amyloid deposits. *Nat. Commun.* 7:11359. doi: 10.1038/ncomms11359
- Rezaei-Ghaleh, N., Kumar, S., Walter, J., and Zweckstetter, M. (2016b). Phosphorylation interferes with maturation of amyloid- β fibrillar structure in the N terminus. *J. Biol. Chem.* 291, 16059–16067. doi: 10.1074/jbc.M116.728956
- Rijal Upadhaya, A., Kosterin, I., Kumar, S., von Arnim, C. A. F., Yamaguchi, H., Fändrich, M., et al. (2014). Biochemical stages of amyloid- β peptide aggregation and accumulation in the human brain and their association with symptomatic and pathologically preclinical Alzheimer's disease. *Brain* 137, 887–903. doi: 10.1093/brain/awt362
- Rochet, J. C., and Lansbury, P. T. Jr. (2000). Amyloid fibrillogenesis: themes and variations. *Curr. Opin. Struct. Biol.* 10, 60–68. doi: 10.1016/s0959-440x(99)00049-4
- Roher, A. E., Kokjohn, T. A., Clarke, S. G., Sierks, M. R., Maarouf, C. L., Serrano, G. E., et al. (2017). APP/A β structural diversity and Alzheimer's disease pathogenesis. *Neurochem. Int.* 110, 1–13. doi: 10.1016/j.neuint.2017.08.007
- Russo, C., Saido, T. C., DeBusk, L. M., Tabaton, M., Gambetti, P., and Teller, J. K. (1997). Heterogeneity of water-soluble amyloid β -peptide in Alzheimer's disease and down's syndrome brains. *FEBS Lett.* 409, 411–416. doi: 10.1016/s0014-5793(97)00564-4
- Saido, T. C., Iwatsubo, T., Mann, D. M., Shimada, H., Ihara, Y., and Kawashima, S. (1995). Dominant and differential deposition of distinct β -amyloid peptide species, A β N3(pE), in senile plaques. *Neuron* 14, 457–466. doi: 10.1016/0896-6273(95)90301-1
- Saido, T. C., Yamao-Harigaya, W., Iwatsubo, T., and Kawashima, S. (1996). Amino- and carboxyl-terminal heterogeneity of beta-amyloid peptides deposited in human brain. *Neurosci. Lett.* 215, 173–176. doi: 10.1016/0304-3940(96)12970-0
- Saito, T., Suemoto, T., Brouwers, N., Slegers, K., Funamoto, S., Mihira, N., et al. (2011). Potent amyloidogenicity and pathogenicity of A β 43. *Nat. Neurosci.* 14, 1023–1032. doi: 10.1038/nn.2858
- Schaffert, L.-N., and Carter, W. G. (2020). Do post-translational modifications influence protein aggregation in neurodegenerative diseases: a systematic review. *Brain Sci.* 10:232. doi: 10.3390/brainsci10040232
- Schilling, S., Zeitschel, U., Hoffmann, T., Heiser, U., Francke, M., Kehlen, A., et al. (2008). Glutaminyl cyclase inhibition attenuates pyroglutamate A β and Alzheimer's disease-like pathology. *Nat. Med.* 14, 1106–1111. doi: 10.1038/nm.1872
- Schönherr, C., Bien, J., Isbert, S., Wichert, R., Prox, J., Altmepfen, H., et al. (2016). Generation of aggregation prone N-terminally truncated amyloid β peptides

- by meprin β depends on the sequence specificity at the cleavage site. *Mol. Neurodegener.* 11:19. doi: 10.1186/s13024-016-0084-5
- Selkoe, D. J., and Hardy, J. (2016). The amyloid hypothesis of Alzheimer's disease at 25 years. *EMBO Mol. Med.* 8, 595–608. doi: 10.15252/emmm.201606210
- Shimizu, T., Watanabe, A., Ogawara, M., Mori, H., and Shirasawa, T. (2000). Isoaspartate formation and neurodegeneration in Alzheimer's disease. *Arch. Biochem. Biophys.* 381, 225–234. doi: 10.1006/abbi.2000.1955
- De Strooper, B., and Karran, E. (2016). The cellular phase of Alzheimer's disease. *Cell* 164, 603–615. doi: 10.1016/j.cell.2015.12.056
- Tanzi, R. E. (2012). The genetics of Alzheimer disease. *Cold Spring Harb. Perspect. Med.* 2:a006296. doi: 10.1101/cshperspect.a006296
- Tcw, J., and Goate, A. M. (2017). Genetics of β -amyloid precursor protein in Alzheimer's disease. *Cold Spring Harb. Perspect. Med.* 7:a024539. doi: 10.1101/cshperspect.a024539
- Tekirian, T. L., Saido, T. C., Markesbery, W. R., Russell, M. J., Wekstein, D. R., Patel, E., et al. (1998). N-terminal heterogeneity of parenchymal and cerebrovascular A β deposits. *J. Neuropathol. Exp. Neurol.* 57, 76–94. doi: 10.1097/00005072-199801000-00009
- Teplow, D. B. (2012). Molecular biology of neurodegenerative diseases. Preface. *Prog. Mol. Biol. Transl. Sci.* 107, xiii–xiv. doi: 10.1016/B978-0-12-385883-2.00014-X
- Thal, D. R., Capetillo-Zarate, E., Del Tredici, K., and Braak, H. (2006). The development of amyloid β protein deposits in the aged brain. *Sci. Aging Knowledge Environ.* 2006:re1. doi: 10.1126/sageke.2006.6.re1
- Thal, D. R., Ronisz, A., Tousseyn, T., Rijal Upadhaya, A., Balakrishnan, K., Vandenberghe, R., et al. (2019). Different aspects of Alzheimer's disease-related amyloid β -peptide pathology and their relationship to amyloid positron emission tomography imaging and dementia. *Acta Neuropathol. Commun.* 7:178. doi: 10.1186/s40478-019-0837-9
- Thal, D. R., Walter, J., Saido, T. C., and Fandrich, M. (2015). Neuropathology and biochemistry of A β and its aggregates in Alzheimer's disease. *Acta Neuropathol.* 129, 167–182. doi: 10.1007/s00401-014-1375-y
- Tomiyama, T., Matsuyama, S., Iso, H., Umeda, T., Takuma, H., Ohnishi, K., et al. (2010). A mouse model of amyloid beta oligomers: their contribution to synaptic alteration, abnormal tau phosphorylation, glial activation and neuronal loss *in vivo*. *J. Neurosci.* 30, 4845–4856. doi: 10.1523/JNEUROSCI.5825-09.2010
- Tomiyama, T., Nagata, T., Shimada, H., Teraoka, R., Fukushima, A., Kanemitsu, H., et al. (2008). A new amyloid beta variant favoring oligomerization in Alzheimer's-type dementia. *Ann. Neurol.* 63, 377–387. doi: 10.1002/ana.21321
- Viola, K. L., and Klein, W. L. (2015). Amyloid β oligomers in Alzheimer's disease pathogenesis, treatment and diagnosis. *Acta Neuropathol.* 129, 183–206. doi: 10.1007/s00401-015-1386-3
- Walsh, D. M., and Selkoe, D. J. (2007). A β oligomers—a decade of discovery. *J. Neurochem.* 101, 1172–1184. doi: 10.1111/j.1471-4159.2006.04426.x
- Walter, S., Jumpertz, T., Hüttenrauch, M., Ogorek, I., Gerber, H., Storck, S. E., et al. (2019). The metalloprotease ADAMTS4 generates N-truncated A β 4-x species and marks oligodendrocytes as a source of amyloidogenic peptides in Alzheimer's disease. *Acta Neuropathol.* 137, 239–257. doi: 10.1007/s00401-018-1929-5
- Watson, D. J., Selkoe, D. J., and Teplow, D. B. (1999). Effects of the amyloid precursor protein Glu693–Gln 'Dutch' mutation on the production and stability of amyloid β -protein. *Biochem. J.* 340, 703–709.
- Wirhth, O., and Zampar, S. (2019). Emerging roles of N- and C-terminally truncated A β species in Alzheimer's disease. *Expert Opin. Ther. Targets* 23, 991–1004. doi: 10.1080/14728222.2019.1702972
- Wirhth, O., Erck, C., Martens, H., Harmeier, A., Geumann, C., Jawhar, S., et al. (2010). Identification of low molecular weight pyroglutamate A β oligomers in Alzheimer disease: a novel tool for therapy and diagnosis. *J. Biol. Chem.* 285, 41517–41524. doi: 10.1074/jbc.M110.178707
- Wirhth, O., Multhaup, G., and Bayer, T. A. (2004). A modified β -amyloid hypothesis: intraneuronal accumulation of the β -amyloid peptide—the first step of a fatal cascade. *J. Neurochem.* 91, 513–520. doi: 10.1111/j.1471-4159.2004.02737.x

Conflict of Interest: The authors declare that the research was conducted in the absence of any commercial or financial relationships that could be construed as a potential conflict of interest.

Copyright © 2021 Kumar, Kapadia, Theil, Joshi, Riffel, Heneka and Walter. This is an open-access article distributed under the terms of the Creative Commons Attribution License (CC BY). The use, distribution or reproduction in other forums is permitted, provided the original author(s) and the copyright owner(s) are credited and that the original publication in this journal is cited, in accordance with accepted academic practice. No use, distribution or reproduction is permitted which does not comply with these terms.