



Ketamine Modulates Zic5 Expression via the Notch Signaling Pathway in Neural Crest Induction

Yu Shi^{1,2}, Jiejing Li³, Chunjiang Chen², Yongwu Xia^{1,2}, Yanxi Li², Pan Zhang^{2,4}, Ying Xu⁴, Tingyu Li², Weihui Zhou² and Weihong Song^{2,5*}

¹ Department of Clinical Laboratory, Children's Hospital of Chongqing Medical University, Chongqing, China, ² Chongqing City Key Lab of Translational Medical Research in Cognitive Development and Learning and Memory Disorders and Ministry of Education Key Lab of Child Development and Disorders, Children's Hospital of Chongqing Medical University, Chongqing, China, ³ Department of Clinical Laboratory, The Affiliated Hospital of KMUST, Medical School, Kunming University of Science and Technology, Kunming, China, ⁴ Department of Anesthesiology, Children's Hospital of Chongqing Medical University, Chongqing, China, ⁵ Townsend Family Laboratories, Department of Psychiatry, The University of British Columbia, Vancouver, BC, Canada

OPEN ACCESS

Edited by:

Karl Tsim,

Hong Kong University of Science and Technology, Hong Kong

Reviewed by:

Michael Lardelli,

University of Adelaide, Australia

Fernando Giraldez,

CEXS – Universidad Pompeu Fabra

(UPF) – Parque de Investigación

Biomédica de Barcelona (PRBB),

Spain

*Correspondence:

Weihong Song

weihong@mail.ubc.ca

Received: 05 October 2017

Accepted: 08 January 2018

Published: 07 February 2018

Citation:

Shi Y, Li J, Chen C, Xia Y, Li Y, Zhang P, Xu Y, Li T, Zhou W and Song W (2018) Ketamine Modulates Zic5 Expression via the Notch Signaling Pathway in Neural Crest Induction. *Front. Mol. Neurosci.* 11:9. doi: 10.3389/fnmol.2018.00009

Ketamine is a potent dissociative anesthetic and the most commonly used illicit drug. Many addicts are women at childbearing age. Although ketamine has been extensively studied as a clinical anesthetic, its effects on embryonic development are poorly understood. Here, we applied the *Xenopus* model to study the effects of ketamine on development. We found that exposure to ketamine from pre-gastrulation (stage 7) to early neural plate (stage 13.5) resulted in disruption of neural crest (NC) derivatives. Ketamine exposure did not affect mesoderm development as indicated by the normal expression of Chordin, Xbra, Wnt8, and Fgf8. However, ketamine treatment significantly inhibited Zic5 and Slug expression at early neural plate stage. Overexpression of Zic5 rescued ketamine-induced Slug inhibition, suggesting the blockage of NC induction was mediated by Zic5. Furthermore, we found Notch signaling was altered by ketamine. Ketamine inhibited the expression of Notch targeted genes including Hes5.2a, Hes5.2b, and ESR1 and ketamine-treated embryos exhibited Notch-deficient somite phenotypes. A 15 bp core binding element upstream of Zic5 was induced by Notch signaling and caused transcriptional activation. These results demonstrated that Zic5 works as a downstream target gene of Notch signaling in *Xenopus* NC induction. Our study provides a novel teratogenic mechanism whereby ketamine disrupts NC induction via targeting a Notch-Zic5 signaling pathway.

Keywords: *Xenopus*, neural crest, ketamine, Notch, Zic5

INTRODUCTION

Neural crest (NC), the vertebrate-specific pluripotent cell population, derives from the border region between the epidermis and the neural plate. NC gives rise to numerous derivatives including cranial cartilages, neurons and glia of peripheral nervous system, melanocytes, and heart outflow tract (Shi et al., 2014). Abnormal development of NC derivatives results in neurocristopathies, leading to many human congenital disorders such as Hirschsprung disease, Treacher Collins syndrome, Waardenburg-Shah syndrome, DiGeorge syndrome, CHARGE syndrome, neuroblastoma, and melanoma (Bolande, 1997; Takahashi et al., 2013; Monsoro-Burq, 2015).

The development of NC undergoes induction, specification, migration, and differentiation, which is tightly regulated by a well-orchestrated gene regulatory network (GRN). After germ layer separation, a set of transcription factors including Pax3, Zic1, Zic5, Msx1, Hairy2, Ap2 α , and c-Myc are expressed at the border region between the neural plate and the epidermis. Such expression is induced by morphogens like Wnt, BMP, FGF, Notch and retinoic acid in a gradient sensitive manner. These border determination transcription factors further trigger the expression of a group of genes including Slug, FoxD3, Snail, Sox9, and Twist in the emerging NC cells, thereby accomplishing NC induction (Steventon et al., 2005; Milet and Monsoro-Burq, 2012; Shyamala et al., 2015). After induction, the NC cells undergo epithelial to mesenchymal transition (EMT) and migrate to their destination in a contact inhibition of locomotion manner (Theveneau and Mayor, 2012). Terminal differentiation of NC cells is extensively cross-regulated by different networks.

The Notch signaling pathway plays vital roles in early embryonic development (Artavanis-Tsakonas et al., 1995, 1999). Following ligand binding, the Notch receptor is cleaved continuously by an ADAM (Brou et al., 2000; Mumm et al., 2000; Dyczynska et al., 2007; Bozkulak and Weinmaster, 2009) and γ -secretase complex (De Strooper et al., 1999; Song et al., 1999; Zhang et al., 2000) and releases the active N-terminal intracellular domain (NICD). The NICD then translocates to nucleus and interacts with CSL family DNA binding proteins to activate the transcription of downstream target genes (Schroeter et al., 1998; Struhl and Adachi, 1998). Activation of the Notch signaling pathway by binding to adjacent cells facilitates boundary determination. During NC induction, Notch and its ligands are expressed in the prospective anterior NC territory, where Notch coordinates with the BMP signal to determine the NC border region. In somitogenesis, the expressed protein amount of the NICD in nucleus forms a cyclical clock manner through degradation and thereby establish somite boundary formation (Dale et al., 2003).

Notch signaling pathway has been shown to play a role in NC development in different animal models. Disturbance of Notch signaling in mice leads to craniofacial structure abnormality, cardiac outflow deficiency, and decreased enteric neurons (Okamura and Saga, 2008; Mead and Yutzey, 2012). Notch signals refine the neural plate border region through negative regulation of PRDM1 α in zebrafish (Hernandez-Lagunas et al., 2011). Studies using chick and *Xenopus* models demonstrate a similar BMP-regulating mechanism of Notch pathways in NC development (Endo et al., 2002). Hairy family genes required for NC induction are down-regulated by BMP-Smad signaling and positively regulated by the Notch/Delta-Su(h) pathway (Vega-Lopez et al., 2015). Another report suggests a role for Tsk in balancing Notch and BMP pathways via directly binding to BMP and the extracellular domain of Delta1 during neural plate border determination in *Xenopus* (Kuriyama et al., 2006).

Ketamine has been commonly used as anesthetic, analgesic, or sedative, and has recently been shown to be a promising acute anti-depressant (Ionescu et al., 2015; Kirby, 2015; Reardon, 2015). As a dissociative anesthetic, ketamine users can develop cravings for the drug and become addicted. Ketamine is now

one of the most popular and most abused recreational illicit drugs in the world. A large number of the drug users are women at childbearing ages. The impact of illicit ketamine use on embryonic development during pregnancy could be detrimental. Previous studies using zebrafish, *Xenopus* and rat models showed its disruptive effects on motor-neuron development (Kanungo et al., 2013), primary germ cell layers specification (Akeju et al., 2014), cardiac morphogenesis (Guo et al., 2016), neural genesis and survival (Dong and Anand, 2013; Dong et al., 2014). More recently, a report suggested craniofacial and trunk phenotypes upon embryonic ketamine exposure in Zebrafish (Felix et al., 2017). Furthermore, ketamine has been shown to act as teratogen in a NMDA-independent ways (Felix et al., 2014). Although ketamine's roles as NMDA antagonist have been extensively studied, the effect on early embryonic development and its underlying mechanisms remain elusive.

In this study, we report that ketamine exposure affected NC development at a very early stage, equivalent to the first month of human pregnancy. Ketamine down-regulates Zic5 expression in the presumptive neural plate border region and thereby disrupting NC induction. Our data indicate that ketamine disturbs Notch signaling, and that Zic5 works downstream of Notch during *Xenopus* NC developmental stages. Our data suggest a completely new teratogenic mechanism whereby ketamine disrupts NC induction via targeting a NOTCH-Zic5 signaling pathway.

MATERIALS AND METHODS

Microinjection and *in Situ* Hybridization

This study was carried out in accordance with the recommendations of the animal study guideline of the Animal Experimentation Ethical Committee of Chongqing Medical University. The protocol was approved by the Animal Experimentation Ethical Committee of Chongqing Medical University in Chongqing, China. Embryo *in vitro* fertilization, culture, whole mount *in situ* hybridization, mRNA preparation and microinjection were carried out as previously described (Shi et al., 2009, 2014). The probes for whole-mount *in situ* hybridization including Chordin, Xbra, Wnt8, Fgf8, Msx1, Pax3, Zic1, Zic5, Slug, Six1, MyoD were applied as described (Smith et al., 1991; Sasai et al., 1994; Nakata et al., 2000; Li et al., 2006; Guemar et al., 2007; Zhang et al., 2014). For enteric neuron labeling, intestines were first manually dissected out from stage 40 embryos which were freshly fixed with 4% paraformaldehyde. Then the enteric neurons were stained through *in situ* hybridization with *N-tubulin* probe (Oschwald et al., 1991).

Cranial Cartilage Staining, Immunohistochemistry, and RT-PCR

The cranial cartilage staining was performed as previously described (Shi et al., 2014). For immunohistochemistry, embryos were collected at stage 40 and fixed with paraformaldehyde. The frozen samples were sectioned in 10 μ m thickness, and stained with β -tubulin III (Sigma T8660). Total RNA samples

were extracted with Trizol kit (Tiangen) and reversely transcribed with Fermentas RevertAid First Strand cDNA synthesis kit (Thermoscientific 1622). The RT-PCR primers for *Fgf8*, *Wnt8*, *Dlx3*, *Dlx5*, *AP2α*, *Pax3*, *Msx1*, *Zic1*, *Zic5*, *Slug*, *Hes5.2a*, *Hes5.2b*, *ESR1*, and *Histone4 (H4)* were listed in **Table 1**.

Western Blot Analysis

T-Leukemia cell lines Jurkat were cultured with 2 mM ketamine for 10 h and collected for WB. The Antibodies used were Notch-1 antibody (Cell Signaling 3608, 1:1000), GAPDH (Enogene E12-052-4, 1:5000). For Notch ubiquitin assay, 5 μM MG132 (Sigma) was added with or without ketamine into the media, Jurkat cells were then lysed and precipitated with Notch-1 antibody (1:50) and then bound with protein A/G (Santa Cruz sc-2003). Anti-ubiquitin (Santa Cruz sc-8017) antibody were applied to detect ubiquitinated proteins.

Luciferase Reporter Assays

Different fragments (100 bp–4 kb) upstream of *Xenopus tropicalis Zic5* gene were cloned and linked with *XhoI* and *MluI* restrictive site into pGL3-basic to generate the firefly reporter constructs. The primers for different lengths of *X. tropicalis Zic5* upstream regulatory sequences are: reverse primer *XhoI*: 5'-ccctcgagtgtctgcctccaactct; -4042 forward: 5'-cgacgcgttgagatggcagtaggct; -1950 forward *MluI*: 5'-cgacgcgttcttattagtgatata; -532 forward: 5'-cgacgcgttgacacaactataggtctatt; -286 forward:

5'-cgacgcgttctccaactttctacaagt; -200 forward: 5'-cgacgcgtcagccagccaatcagaaaag; -200m forward: 5'-cgacgcgttcttaattaagattgaaaagcgggcctcc; -186 forward: 5'-cgacgcgtgaaaagcgggcctcctgcc. To mutant canonical CSL binding site, mutant kit (Takara R401) as well as template construct pXzic5 -4042/-29 was applied according to the manufacture with primers: for 3950 site forward 5'-atgtattgcttcgaccttgacatttgg, reverse 5'-gtttctacattttccaagtgtgcaag; for 65 site forward 5'-ggacagacctacggaaggaataagc, reverse 5'-ctccagcattggcagaaagcg.

To measure the reporter activity in embryos, 12.5 pg constructed firefly plasmid, 2.5 pg renilla construct and 500 pg NICD mRNA or 500 pg LacZ mRNA (for control) were co-injected into both side of the dorsal blastomeres at the 4-cell stage. The embryos were then harvested at the neural plate stage (stage 15), divided into three groups (> 10 embryos each group), lysed and analyzed using Dual-Luciferase Reporter Assay System (Promega).

Electrophoretic Mobility Shift Assay (EMSA)

SHSY-5Y cell line was transfected with pcDNA4-NICD or pcDNA empty vector. Nuclear protein was extracted. EMSA was performed as described previously with minor adjustment (Wang et al., 2011). Briefly, 20 μg protein was incubated with IRDye700-labeled binding oligo (5'-gcctgacagccagccaatca) or mutant oligo (5'-gactaacaacctccaaca) respectively, and the gels were analyzed

TABLE 1 | RT-PCR primers used in this study.

Gene	Primers (forward and reverse)	Cycles	Annealing temperatures (°C)	Extension time (s)	Reference
<i>Fgf8</i>	5'-TGCGGAGACTGGTTACTACATCTG-3' 5'-TTCTGTGGTGTGGTGTCCCTTTGG-3'	28	55	30	Monsoro-Burq et al., 2003
<i>Wnt8</i>	5'-GACAAGATGCCAGAGCCCTAA-3' 5'-TAAGTTCAGACCCGGCCACA-3'	28	55	30	Zhang et al., 2014
<i>Dlx3</i>	5'-TCGGCCGTTTGTCCATTACA-3' 5'-GGTTTCGGGCTCTTCTTCA-3'	26	55	30	Zhang et al., 2014
<i>Dlx5</i>	5'-ATTCTCCCCAGTCTCCAGTG-3' 5'-GATAGTGTCCCCAGTTGCGC-3'	26	55	30	This work
<i>AP2α</i>	5'-GGACCTGCCTTTACATCCATACC-3' 5'-CCTCCGTTTTAGATTTGCC-3'	28	55	30	de Croze et al., 2011
<i>Pax3</i>	5'-TCTCACTCTCTTTACAGGGGAC-3' 5'-TCTTGTGCCTTATGTGGTTGGG-3'	29	55	30	Monsoro-Burq et al., 2005
<i>Msx1</i>	5'-ACTGGTGTGAAGCCGTCCT-3' 5'-TTCTCTCGGGACTCTCAGGC-3'	29	55	30	Su et al., 1991
<i>Zic1</i>	5'-ATGAAGTCCACGACGAAGCATC-3' 5'-CGTGCTGTGATTGGACGTGT-3'	30	55	30	Mizuseki et al., 1998
<i>Zic5</i>	5'-AGAGAGGACTATACGCTAAC-3' 5'-GGTACATGAGAGCAGAGAAC-3'	27	55	30	Nakata et al., 2000
<i>Slug</i>	5'-TCCCGCCACTGAAAATGCCACGATC-3' 5'-CCGTCCTAAAGATGAAGGGTATTCCTG-3'	28	55	30	Mizuseki et al., 1998
<i>Hes5.2a</i>	5'-GGCATTGGTAGAAGCAGTC-3' 5'-CCAGTTTAACCTTGGGTGTC-3'	28	55	30	This work
<i>Hes5.2b</i>	5'-AGCAGAAGCCAAGCTAATC-3' 5'-AGGACCATAACCGAACAAAG-3'	28	55	30	This work
<i>ESR1</i>	5'-ACAAGCAGGAACCCAATGTCA-3' 5'-GCCAGAGCTGATTGTTGGAG-3'	28	55	30	Kinoshita et al., 2011
<i>H4</i>	5'-CGGGATAACATTACAGGGTATCACT-3' 5'-ATCCATGGCGGTAAGTGTCTTCT-3'	24	55	30	Kinoshita et al., 2011

using an Odyssey system (LI-COR Biosciences). Unlabeled wild-type and mutant oligonucleotides at X100 molar excess were applied for the competition assay.

RESULTS

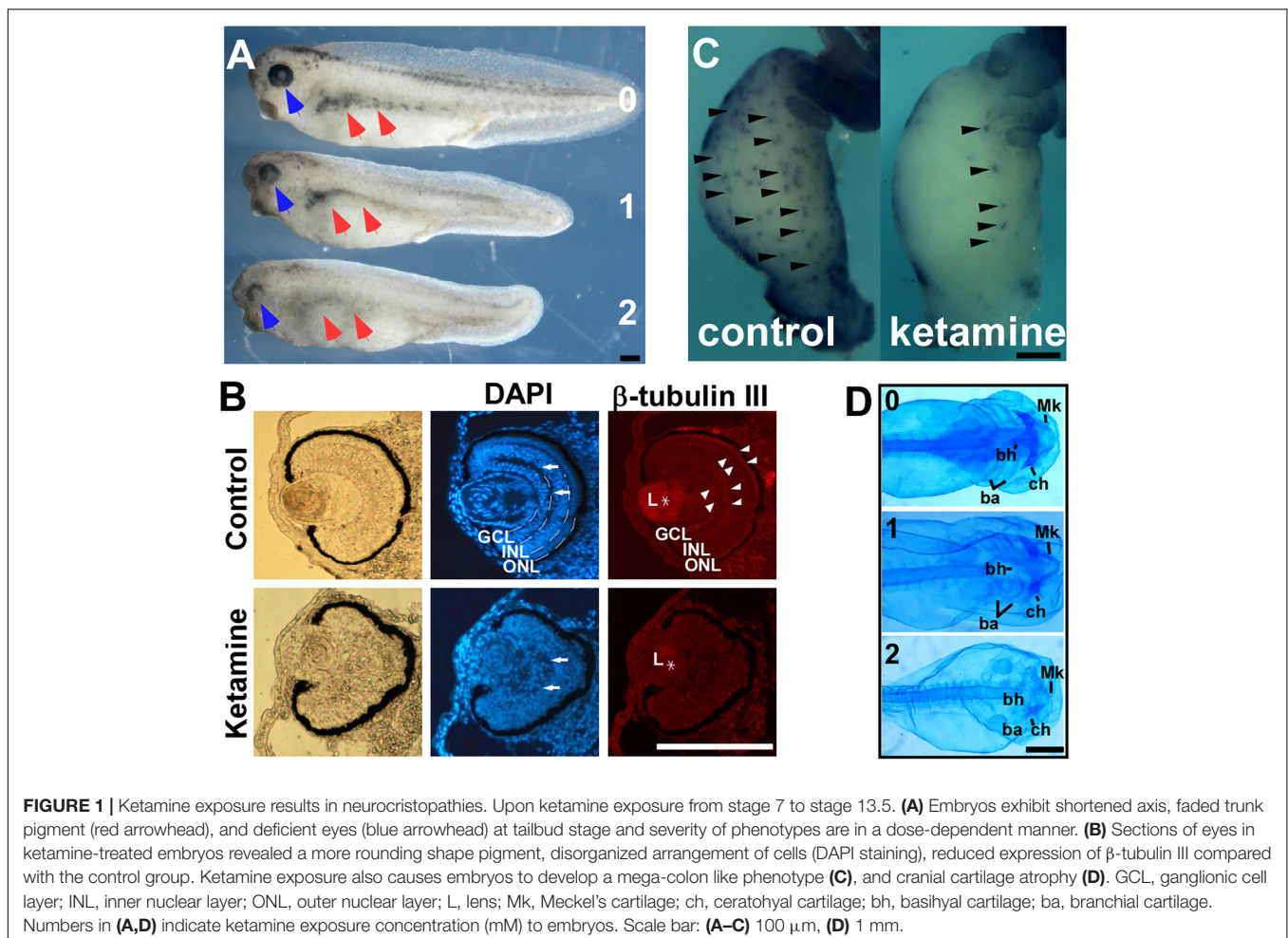
Embryonic Ketamine Exposure Results in Neurocristopathies

Previous data indicates that 2 mM ketamine applied in culture yields approximately 0.4% accumulation, i.e., 8 μ M inside embryo (Cuevas et al., 2013), which is comparable to the anesthetic concentration in human plasma (Dong et al., 2014). 2 mM or similar culture concentration was commonly chosen to evaluate the embryonic ketamine exposure in most studies (Kanungo et al., 2013; Felix et al., 2014; Lantz-McPeak et al., 2015; Robinson et al., 2015). To examine ketamine's effects on early embryonic development, we exposed *Xenopus* embryos to 2 mM ketamine-MBS culture media from pre-gastrulation (stage 7) to early neural plate (stage 13.5), and then cultured in MBS media until harvest time. Upon ketamine incubation, pigment cells in trunk diminished and eyes exhibited developmental abnormalities (Figure 1A). Ocular pericytes located in retina

ganglionic cell layer (GCL) and inner nuclear layer (INL) are derived from the NC (Trost et al., 2013). Further analysis showed disorganization of GCL, INL, and outer nuclear layer (ONL) (Figure 1B DAPI stain, white arrow) and loss of β -tubulin III expression in cell layer boundary (Figure 1B, white arrowhead) and lens (Figure 1B, asterisk) expression, indicating abnormal differentiation of lens and retina. At the tailbud stage, ketamine caused enlargement of intestinal system combining loss of enteric nervous cells (Figure 1C, black arrowhead), a mega-colon like (Hirschsprung disease) phenotype (Figure 1C) and marked reduction or even complete loss of all the cranial cartilage elements including Meckel's (Mk), ceratohyal (ch), basihyal (bh), and branchial (ba) cartilages as demonstrated by alcian blue staining (Figure 1D). These data clearly indicate that ketamine impairs NC development, causing neurocristopathies.

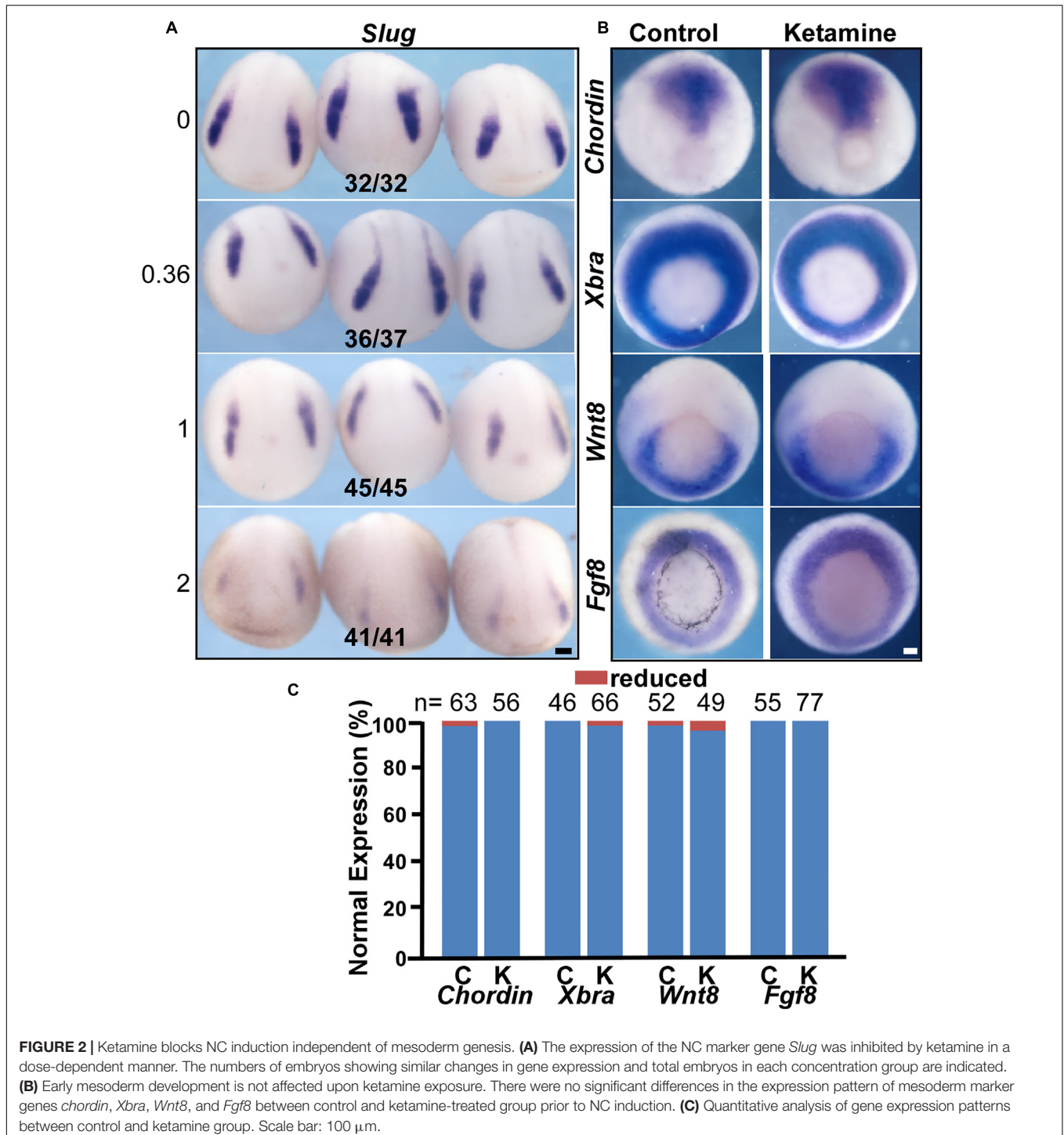
Ketamine Blocks NC Induction Independent of Mesoderm Genesis

Induction is the first event in NC genesis. To investigate the effect of ketamine on NC induction, we examined the expression pattern of the NC specification gene *Slug*. The criteria for judging the expression pattern are based on two aspects, expression



area and intensity. Compared to control, decreased expression area or signal intensity was determined as 'reduced expression level.' At the early neural plate stage (stage 14), when the NC has been induced, control embryos express a normal *Slug* expression pattern (in 32/32 embryos) (Figure 2A). However, ketamine at a 0.36 mM culture concentration showed reduced *Slug* expression (36/37). The inhibition of *Slug* expression

increases in a dose dependent manner. At a 2 mM ketamine concentration, *Slug* expression was severely reduced (41/41) (Figure 2A). Morphogens from the mesoderm are critical for inducing the NC (Klymkowsky et al., 2010). Thus, we examined mesoderm development by *in situ* hybridization assay with mesoderm markers on the ketamine-incubated and control embryos prior to NC induction (stage 11.5) (Figure 2B). There



was no significant difference between ketamine and control groups in the expression pattern of four mesoderm maker genes including *Chordin* (100% normal expression for ketamine, $n = 56$; and 98.41% normal expression for control, $n = 63$), *Xbra* (98.48% normal expression for ketamine, $n = 66$; and 100% normal expression for control, $n = 46$), *Wnt8* (95.92% normal expression for ketamine $n = 49$; and 98.08% normal expression for control, $n = 52$), and *Fgf8* (100% normal expression for ketamine, $n = 77$; and 100% normal expression for control, $n = 55$) (Figure 2C). These results suggest that ketamine does not affect mesoderm at the beginning of NC induction. These data indicate that ketamine blocks NC induction independent of mesoderm genesis.

Ketamine Disrupts NC Induction by Inhibiting the Expression of *Zic5*

Neural crest induction requires high Wnt and intermediate BMP signaling input (Steventon et al., 2009). At the onset of gastrulation, animal cap, a pluripotent cell group located in at the animal pole of *Xenopus* embryos, can develop into almost any cell type given the proper signaling stimulation *in vitro*. In *Xenopus* animal caps, co-injection of Wnt8 and BMP4 truncated receptor (tBR) mimics endogenous NC stimulation and results in the expression of NC genes (Zhang et al., 2014). To determine the targeting molecules mediating ketamine's effect on NC induction, we first examined gene expression in the wnt8-tBR co-injected animal cap system. The default of animal cap cells is an epidermis fate, characterized by a high BMP signaling niche (Linker et al., 2009; Montagner et al., 2016). BMP target genes *Msx1* (Tribulo et al., 2003), *Dlx3*, *Dlx5* (Luo et al., 2001; McLarren et al., 2003) and *AP2 α* (Luo et al., 2002, 2003) are involved in neural plate border determination and are normally expressed in control animal caps. Co-injection of 500 pg *Wnt8* mRNA and 500 pg *tBR* mRNA successfully triggers animal cap cells to express the secreted genes *Fgf8*, *Wnt8*, and neural border genes including *Zic1*, *Pax3*, *Zic5* as well as NC specific genes *Slug* (Figure 3A). In the presence of ketamine, Wnt8-tBR induced animal caps markedly reduces the expression of *Zic5* and *Slug* (Figure 3A). *Zic5* is expressed in the NC area and plays an indispensable role in the induction process (Nakata et al., 2000). Since embryos undergo NC induction in the late gastrula (approximate at stage 12.5), we examined the NC markers at this critical time with a 1–2 mM ketamine exposure or 0.8 nmol direct injection. At stage 12 the pre-induction state, neither control nor ketamine-treated embryos expressed *Slug*. At stage 13, all of the NC regulatory network genes were expressed in control embryos, whereas *Zic5* and *Slug* transcripts were reduced in embryos cultured in the ketamine-containing media or directly injected with ketamine. However, the *Zic5* and *Slug* expression levels from whole embryos returned to normal at the beginning of NC migration (stage 16). The recovery NC gene expression may be due to the feedback of complicated GRNs (Figure 3B). Consistent with RT-PCR data from animal caps and whole embryos, *in situ* hybridization results showed that ketamine treatment did not affect most NC induction-related genes including *Fgf8* (97.96% normal expression, $n = 49$), *Wnt8* (100% normal expression, $n = 77$), *Msx1* (100% normal expression, $n = 66$), *Pax3* (97.56%

normal expression, $n = 41$), and *Zic1* (96.15% normal expression, $n = 52$) (Figures 3C,F). However, the expression of *Zic5* and the induction marker gene *Slug* were markedly inhibited by ketamine, with 97% ($n = 70$,) and 100% ($n = 43$) of embryos having inhibited expression respectively (Figures 3D,F). Finally, exogenous injection of *Zic5* mRNA at two-cell stage significantly rescued the ketamine-induced *Slug* inhibition (63.64% of normal expression, $n = 44$) (Figures 3E,F). Our data suggest that ketamine disrupts NC induction by inhibiting *Zic5* expression.

Targeting *Zic5* by Notch Signaling in NC Induction

To investigate the upstream signaling pathways mediating ketamine-induced *Zic5* inhibition during NC induction, we screened the most common NC induction morphogens including Wnt, Fgf, and Notch. Previous work showed that prospective paraxial mesoderm or *Fgf8* induces *Zic5* expression (Monsoro-Burq et al., 2003). Our results show that *Fgf8* and its downstream NC inducing gene *Msx1* (Monsoro-Burq et al., 2005) were normally expressed and not affected by ketamine treatment (Figure 3). However, ketamine exposure markedly reduced the expression of Notch target genes *Hes5.2a*, *Hes5.2b*, and *ESR1* (Figure 4A). Somite labeling with *MyoD* and *Six1* transcripts showed slightly reduced signal (Figure 4B) and a shortened embryonic body axis (Figure 1A) that mirrors phenotypes seen in Notch-deficient embryos (Jen et al., 1997). To analyze ketamine's effect on Notch signaling, the human T-cell leukemia line Jurkat was used. 2 mM Ketamine exposure for 10 h increased the amount of ubiquitinated Notch (Figure 4C) and promoted Notch protein degradation (Figure 4D). To ask whether *Zic5* functions as a downstream target gene of Notch signaling, we assayed *Zic5*'s response to high and low Notch environment during NC induction in *Xenopus* embryos. Blocking Notch pathway with microinjection of *Delta-stu* mRNA (Revinski et al., 2010) at the 4-cell stage markedly inhibited *Zic5* expression (Figure 4E). Activation of Notch signaling by injection of *NICD* (Fryer et al., 2002) induced *Zic5* ectopic expression in whole neural plate and NC area (Figure 4E).

Identification of a 15 bp *cis*-Acting Notch-Response Element in the *Zic5* Upstream Regulatory Region

To investigate the molecular mechanism underlying Notch's effect on *Zic5*, we first examined whether the *Zic5* gene contains Notch response element (NRE) in its upstream regulatory region. A 4013 bp containing sequence, between -4042 and -29 bp upstream of the translation start codon (designated as +1), for the *X. tropicalis* *Zic5* gene was cloned into pGL3-basic to generate a firefly luciferase gene reporter construct pX $zic5$ -4042/-29. Sanger sequencing confirmed the insertion of -4042 to -29 as identical to 117367902–117371914 of chromosome 2 (Xenbase/*X. tropicalis* Gbrowse 9.0). This 4 kb sequence contains two putative canonical Notch signaling CSL binding elements (GTGGGAA) in -65 to -58 (chromosome 2, 11731879–11731885) and in -3950 to -3944 (chromosome 2, 11731971–11731977) upstream of *Zic5*. To check the promoter activity

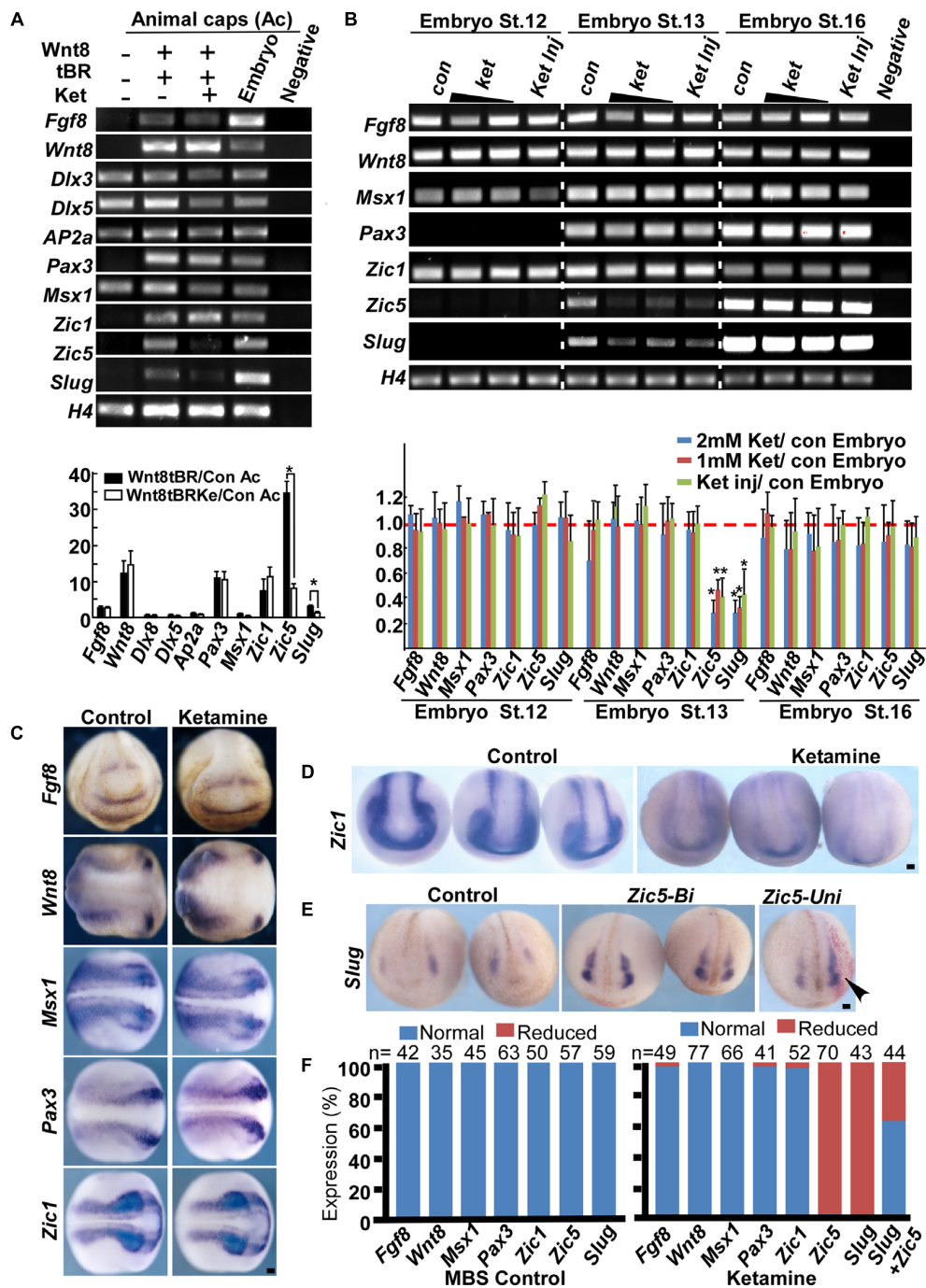
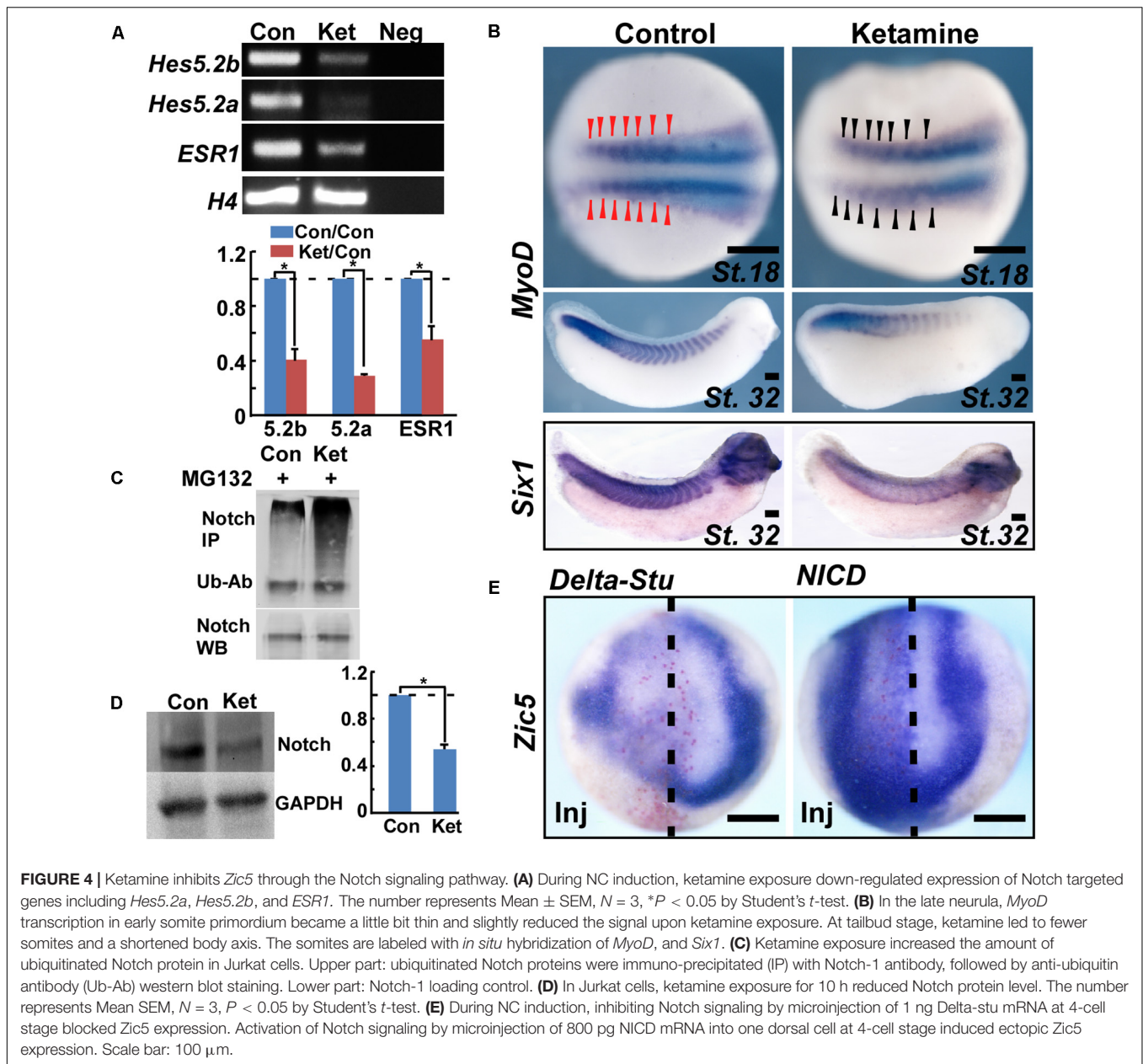


FIGURE 3 | Ketamine targets *Zic5* in NC induction. **(A)** In animal caps, Wnt8 (500 pg) and tBR (500 pg) induce expression of NC markers (lanes 1, 2). Upon ketamine exposure, the expression of *Zic5* and *Slug* were inhibited (lanes 2, 3). The induced expression of *Zic5* and *Slug* were reduced by ketamine treatment in animal cap. Gene expressions were normalized with H4. Data are shown as folds over the control animal caps. 15 animal caps were isolated for each group for single time experiments. The number represents Mean \pm SEM, $N = 3$, $*P < 0.05$ by ANOVA. **(B)** In whole embryos, either ketamine exposure or injection (0.8 nmol/embryo) blocked *Zic5* and *Slug* expression at stage 13 (when the NC is being induced) but not stage 16 (at the onset of NC migration). Ketamine treatment did not affect most of the border genes from stage 12 to stage 16, but significantly blocked *Zic5* and NC gene *Slug* at stage 13. For a single time experiment, 10 embryos were collected for each group for RT-PCR. Data are shown as folds over the control embryos. The number represents Mean \pm SEM. $N = 3$, $*P < 0.05$ by ANOVA. **(C)** *In situ* hybridization suggests genes involved in NC induction, including *Fgf8*, *Wnt8*, *Msx1*, *Pax3*, and *Zic1* were not affected by ketamine exposure. **(D)** Ketamine inhibited *Zic5* expression comparing with MBS cultured control group. **(E)** The inhibition of *Slug* expression by ketamine was rescued by injection of *Zic5* mRNA (500 pg) in both sides or unilaterally. Arrowhead indicate the unilaterally injected side. **(F)** Quantitative analysis of *in situ* hybridization results, left: MBS control group, right: ketamine exposure group. $*P < 0.05$ with *t*-test. Con, control; Ket, ketamine; Ket Inj, ketamine injection; St., stage; *Zic5-Bi*, *zic5* bilateral injection; *Zic5-Uni*, *zic5* unilateral injection. Scale bar: 100 μ m.



and the involvement of these two CSL *cis*-acting binding elements, pX*zic5* (-65M)-4042/-29 carrying the -65 binding site mutation to CCTACGG, pX*zic5* (-3950M)-4042/-29 carrying the -3950 binding site mutation to CCTACGG, and pX*zic5* (DM) -4042/-29 carrying both binding site mutations to CCTACGG were generated for reporter assays (Figure 5A). *NICD* mRNA or *LacZ* mRNA (mock stimuli), and pX*ZIC5*-4042/-29 or relative 4 kb insertion containing CSL mutant firefly constructs were co-injected into both dorsal blastomeres (that target the neural plate and NC area) at 4-cell stage. A *Renilla luciferase* construct was also co-injected into embryos as the normalization control. Upon *NICD* stimulation, pX*zic5*-4042/-29 (1.59 ± 0.23 RLU), pX*zic5* (DM)-4042/-29 (1.51 ± 0.06 RLU), pX*zic5* (-3950M)-42/-29 (1.49 ± 0.07 RLU) and pX*zic5*

(-65M)-42/-29 (1.37 ± 0.13 RLU) reveal significant high luciferase expression level ($P < 0.05$) compared with negative control (*LacZ*) stimulated pX*zic5*-4042/-29 (0.05 ± 0.01 RLU) group in *Xenopus* Embryos. Transcriptional activity exhibited no statistical difference among the 4 kb wild-type and the putative CSL-binding site mutant constructs (Figure 5A). Our data suggest that there is functional NRE within region -4042 to -29, however, the two putative canonical CSL binding sites did not account for Notch-activated *Zic5* transcriptional activation.

To identify the NRE, a series of deletion plasmids, covering various regions of this 4 kb fragment were cloned. Figure 5B showed that *NICD* significantly activated the luciferase report plasmids containing -4042 bp (2.49 ± 0.62 RLU), -1950 bp

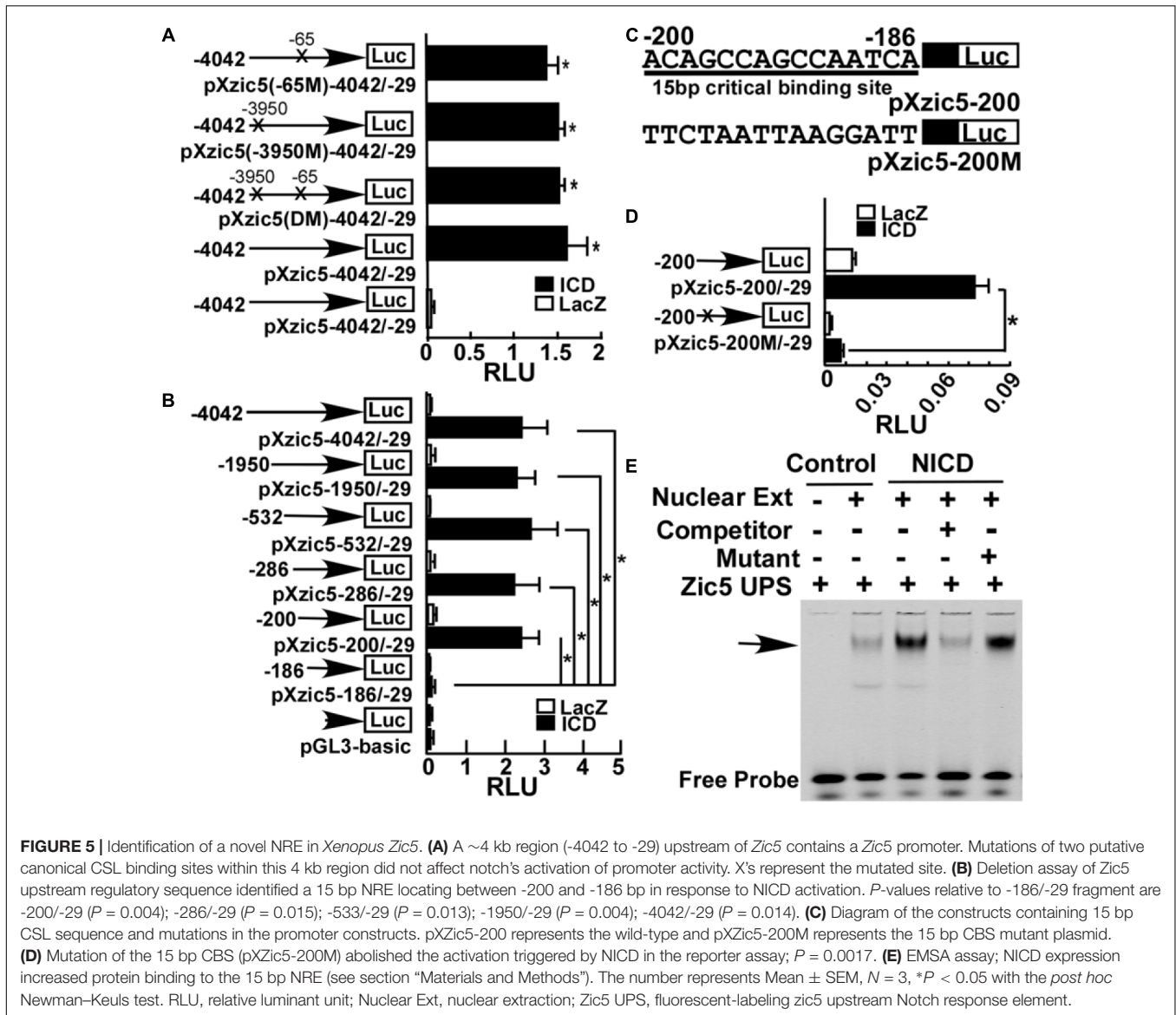


FIGURE 5 | Identification of a novel NRE in *Xenopus Zic5*. **(A)** A ~4 kb region (-4042 to -29) upstream of *Zic5* contains a *Zic5* promoter. Mutations of two putative canonical CSL binding sites within this 4 kb region did not affect notch's activation of promoter activity. X's represent the mutated site. **(B)** Deletion assay of *Zic5* upstream regulatory sequence identified a 15 bp NRE locating between -200 and -186 bp in response to NICD activation. *P*-values relative to -186/-29 fragment are -200/-29 ($P = 0.004$); -286/-29 ($P = 0.015$); -533/-29 ($P = 0.013$); -1950/-29 ($P = 0.004$); -4042/-29 ($P = 0.014$). **(C)** Diagram of the constructs containing 15 bp CSL sequence and mutations in the promoter constructs. pXzic5-200 represents the wild-type and pXzic5-200M represents the 15 bp CBS mutant plasmid. **(D)** Mutation of the 15 bp CBS (pXzic5-200M) abolished the activation triggered by NICD in the reporter assay; $P = 0.0017$. **(E)** EMSA assay; NICD expression increased protein binding to the 15 bp NRE (see section "Materials and Methods"). The number represents Mean \pm SEM, $N = 3$, * $P < 0.05$ with the *post hoc* Newman-Keuls test. RLU, relative luminant unit; Nuclear Ext, nuclear extraction; Zic5 UPS, fluorescent-labeling zic5 upstream Notch response element.

(2.36 ± 0.45 RLU), -532 bp (2.73 ± 0.063 RLU), -286 bp (2.30 ± 0.62 RLU), and -200 bp (2.48 ± 0.42 RLU) upstream of *Zic5* ORF with similar activation. A further deletion of 15 bp lead to a sharply reduced luciferase activity in pXzic5-186/-29 (0.187 ± 0.099 RLU) ($P < 0.05$) (Figure 5B). Therefore, the 15 bp sequence (5'-ACAGCCAGCCAATCA) located between -200 and -186 bp upstream of *Zic5* was identified to contain a functional NRE. To confirm the results, we generated a new plasmid pXzic5-200M containing mutations in the NRE (Figure 5C). The *Zic5* upstream 200 bp reporter plasmid containing the 15 bp NRE was strongly activated by NICD (0.073 ± 0.0069 RLU), and the mutations in the 15 bp sequence to disrupt the NRE (0.007 ± 0.0009 RLU) abolished the activation of *Zic5* by NICD (Figure 5D).

Electrophoretic mobility shift assay (EMSA) was performed to further examine whether Notch signaling activation promotes the binding of the transcriptional factors to the 15 bp NRE. Nuclear

proteins with or without NICD-transfected were extracted from SHSY5Y cells. NICD-transfection significantly increased the amount of the protein-NRE DNA binding complex (Figure 5E). The competitor probe containing the same non-fluorescently labeled 15 bp sequence reversed the fluorescent binding signaling to background level, and a mutant probe had little effect to compete with the binding (Figure 5E). These results unequivocally demonstrate that Notch activates *Zic5* expression via the newly identified 15 bp NRE.

DISCUSSION

Ketamine is a dissociative anesthetic and the most popular club drug abused by youths for recreational purposes (Lee et al., 2015). Lately ketamine has attracted extensive attention for its quick and significant alleviation of depression (DiazGranados et al., 2010;

Li et al., 2011). Ketamine usage grows steadily. Young people, including those at childbearing age, are a major addict-prone population. In human, NC induction happens within the first month of pregnancy. At this early point in the pregnancy, most women are not aware that they are pregnant until the next regular menstrual cycle. While ketamine exposure has been shown to affect cell survival (Brambrink et al., 2012; Bai et al., 2013), germ layer specification (Akeju et al., 2014), neurogenesis (Cuevas et al., 2013; Kanungo et al., 2013; Dong et al., 2014), cardiac morphogenesis (Guo et al., 2016), and craniofacial and trunk genesis (Felix et al., 2017), the effect of ketamine on early embryonic development is poorly understood.

In this study, we discovered that early embryonic ketamine exposure specifically blocks NC induction via targeting *Zic5*. This effect on the NC is not due to the disruption of the mesoderm. Previous studies suggested the vital roles of *Zic5* in NC genesis in mouse and *Xenopus* (Nakata et al., 2000; Inoue et al., 2004). *Zic5* also works downstream of Wnt pathways and regulates tectum cell proliferation in zebrafish (Nyholm et al., 2007). However, the upstream signals regulating *Zic5* expression in NC induction were not yet known. Our work revealed that the expression of *Zic5* is controlled by Notch signaling during NC induction. Ketamine inhibited Notch targeted gene expression in *Xenopus* embryos. *Xenopus* embryos exposed to ketamine also exhibited shortened somite-segmentation, a typical Notch signaling deficiency phenotype. The Notch signaling pathway has long been known to participate in NC induction (Glavic et al., 2004; Kuriyama et al., 2006). In the neural-epidermal boundary, Notch balances BMP via activation of *Hairy2* expression (Glavic et al., 2004). However other reports showed that *Hairy2* is not regulated by Notch, but activates Notch via *Stat3* (Nichane et al., 2008a,b). In this study, we demonstrated that *Zic5* is a Notch targeted border gene involved in *Xenopus* NC induction. We also identified a 15 bp *cis*-acting element in the 5' regulatory region of *Xenopus Zic5* gene that binds to NICD to mediate Notch's transcriptional activation of *Zic5* gene expression. Our

study further showed that ketamine enhanced ubiquitination of Notch proteins, and reduced Notch-1 protein level. These data suggest that enhanced degradation of Notch protein by ketamine may partly account for the phenotypes we observed in *Xenopus*, consistent with the similar phenotypes in Zebrafish (Felix et al., 2017). These results suggest a conserved mechanism of ketamine among different species.

In summary, we discovered that *Zic5* works as a downstream target gene of Notch signaling in *Xenopus* NC induction. Our study provides a novel teratogenic mechanism for ketamine whereby it disrupts NC induction by targeting a Notch-*Zic5* signaling pathway.

AUTHOR CONTRIBUTIONS

YS, JL, and WS conceived and designed the experiments. YS, JL, CC, YXi, YL, and YXu performed the experiments. YS, JL, YXi, YXu, TL, and WS analyzed and contributed reagents/materials/analysis tools. YS, JL, and WS wrote the paper. All authors reviewed the manuscript.

ACKNOWLEDGMENTS

This work was supported by the National Natural Science Foundation of China (NSFC) (81102519 and 81771596 to YS), (81200878 to JL), and (81200440 to YXi) the China Postdoctoral Science Foundation funded project (2012M511914 to YS), the Chongqing Science and Technology Committee (CSTC2012jjA10095 and CSTC2015jcyjBX0095 to YS) and Chongqing Municipal Bureau of Health and Family Planning Project (2015MSXM036 to YS), and Canadian Institutes of Health Research (CIHR) Grant TAD-117948 (WS). WS is the holder of the Tier 1 Canada Research Chair in Alzheimer's Disease.

REFERENCES

- Akeju, O., Davis-Dusenbery, B. N., Cassel, S. H., Ichida, J. K., and Eggan, K. (2014). Ketamine exposure in early development impairs specification of the primary germ cell layers. *Neurotoxicol. Teratol.* 43, 59–68. doi: 10.1016/j.ntt.2014.04.001
- Artavanis-Tsakonas, S., Matsuno, K., and Fortini, M. E. (1995). Notch signaling. *Science* 268, 225–232.
- Artavanis-Tsakonas, S., Rand, M. D., and Lake, R. J. (1999). Notch signaling: cell fate control and signal integration in development. *Science* 284, 770–776.
- Bai, X., Yan, Y., Canfield, S., Muravyeva, M. Y., Kikuchi, C., Zaja, I., et al. (2013). Ketamine enhances human neural stem cell proliferation and induces neuronal apoptosis via reactive oxygen species-mediated mitochondrial pathway. *Anesth. Analg.* 116, 869–880. doi: 10.1213/ANE.0b013e3182860fc9
- Bolande, R. P. (1997). Neurocristopathy: its growth and development in 20 years. *Pediatr. Pathol. Lab. Med.* 17, 1–25.
- Bozkulak, E. C., and Weinmaster, G. (2009). Selective use of ADAM10 and ADAM17 in activation of Notch1 signaling. *Mol. Cell. Biol.* 29, 5679–5695. doi: 10.1128/MCB.00406-09
- Brambrink, A. M., Evers, A. S., Avidan, M. S., Farber, N. B., Smith, D. J., Martin, L. D., et al. (2012). Ketamine-induced neuroapoptosis in the fetal and neonatal rhesus macaque brain. *Anesthesiology* 116, 372–384. doi: 10.1097/ALN.0b013e318242b2cd
- Brou, C., Logeat, F., Gupta, N., Bessia, C., LeBail, O., Doedens, J. R., et al. (2000). A novel proteolytic cleavage involved in Notch signaling: the role of the disintegrin-metalloprotease TACE. *Mol. Cell.* 5, 207–216.
- Cuevas, E., Trickler, W. J., Guo, X., Ali, S. F., Paule, M. G., and Kanungo, J. (2013). Acetyl L-carnitine protects motor neurons and Rohon-Beard sensory neurons against ketamine-induced neurotoxicity in zebrafish embryos. *Neurotoxicol. Teratol.* 39, 69–76. doi: 10.1016/j.ntt.2013.07.005
- Dale, J. K., Maroto, M., Dequeant, M. L., Malapert, P., McGrew, M., and Pourquie, O. (2003). Periodic notch inhibition by lunatic fringe underlies the chick segmentation clock. *Nature* 421, 275–278.
- de Croze, N., Maczkowiak, F., and Monsoro-Burq, A. H. (2011). Reiterative AP2a activity controls sequential steps in the neural crest gene regulatory network. *Proc. Natl. Acad. Sci. U.S.A.* 108, 155–160. doi: 10.1073/pnas.1010740107
- De Strooper, B., Annaert, W., Cupers, P., Saftig, P., Craessaerts, K., Mumm, J. S., et al. (1999). A presenilin-1-dependent gamma-secretase-like protease mediates release of Notch intracellular domain. *Nature* 398, 518–522.
- DiazGranados, N., Ibrahim, L. A., Brutsche, N. E., Ameli, R., Henter, I. D., Luckenbaugh, D. A., et al. (2010). Rapid resolution of suicidal ideation after a single infusion of an N-methyl-D-aspartate antagonist in patients with treatment-resistant major depressive disorder. *J. Clin. Psychiatry* 71, 1605–1611. doi: 10.4088/JCP.09m05327blu
- Dong, C., and Anand, K. J. (2013). Developmental neurotoxicity of ketamine in pediatric clinical use. *Toxicol. Lett.* 220, 53–60. doi: 10.1016/j.toxlet.2013.03.030

- Dong, C., Rovnaghi, C. R., and Anand, K. J. (2014). Ketamine affects the neurogenesis of rat fetal neural stem progenitor cells via the PI3K/Akt-p27 signaling pathway. *Birth Defects Res. B Dev. Reprod. Toxicol.* 101, 355–363. doi: 10.1002/bdrb.21119
- Dyczynska, E., Sun, D., Yi, H., Sehara-Fujisawa, A., Blobel, C. P., and Zolkiewska, A. (2007). Proteolytic processing of delta-like 1 by ADAM proteases. *J. Biol. Chem.* 282, 436–444.
- Endo, Y., Osumi, N., and Wakamatsu, Y. (2002). Bimodal functions of Notch-mediated signaling are involved in neural crest formation during avian ectoderm development. *Development* 129, 863–873.
- Felix, L. M., Antunes, L. M., and Coimbra, A. M. (2014). Ketamine NMDA receptor-independent toxicity during zebrafish (*Danio rerio*) embryonic development. *Neurotoxicol. Teratol.* 41, 27–34. doi: 10.1016/j.ntt.2013.11.005
- Felix, L. M., Serafim, C., Martins, M. J., Valentim, A. M., Antunes, L. M., Matos, M., et al. (2017). Morphological and behavioral responses of zebrafish after 24h of ketamine embryonic exposure. *Toxicol. Appl. Pharmacol.* 321, 27–36. doi: 10.1016/j.taap.2017.02.013
- Fryer, C. J., Lamar, E., Turbachova, I., Kintner, C., and Jones, K. A. (2002). Mastermind mediates chromatin-specific transcription and turnover of the Notch enhancer complex. *Genes Dev.* 16, 1397–1411.
- Glavic, A., Silva, F., Aybar, M. J., Bastidas, F., and Mayor, R. (2004). Interplay between Notch signaling and the homeoprotein Xiro1 is required for neural crest induction in *Xenopus* embryos. *Development* 131, 347–359.
- Guemar, L., de Santa Barbara, P., Vignal, E., Maurel, B., Fort, P., and Faure, S. (2007). The small GTPase RhoV is an essential regulator of neural crest induction in *Xenopus*. *Dev. Biol.* 310, 113–128.
- Guo, R., Liu, G., Du, M., Shi, Y., Jiang, P., Liu, X., et al. (2016). Early ketamine exposure results in cardiac enlargement and heart dysfunction in *Xenopus* embryos. *BMC Anesthesiol.* 16:23. doi: 10.1186/s12871-016-0188-z
- Hernandez-Lagunas, L., Powell, D. R., Law, J., Grant, K. A., and Artinger, K. B. (2011). *prdm1a* and *olig4* act downstream of Notch signaling to regulate cell fate at the neural plate border. *Dev. Biol.* 356, 496–505. doi: 10.1016/j.ydbio.2011.06.005
- Inoue, T., Hatayama, M., Tohmonda, T., Itoharu, S., Aruga, J., and Mikoshiba, K. (2004). Mouse *Zic5* deficiency results in neural tube defects and hypoplasia of cephalic neural crest derivatives. *Dev. Biol.* 270, 146–162.
- Ionescu, D. F., Luckenbaugh, D. A., Niciu, M. J., Richards, E. M., and Zarate, C. A. Jr. (2015). A single infusion of ketamine improves depression scores in patients with anxious bipolar depression. *Bipolar Disord.* 17, 438–443. doi: 10.1111/bdi.12277
- Jen, W. C., Wettstein, D., Turner, D., Chitnis, A., and Kintner, C. (1997). The Notch ligand, X-Delta-2, mediates segmentation of the paraxial mesoderm in *Xenopus* embryos. *Development* 124, 1169–1178.
- Kanungo, J., Cuevas, E., Ali, S. F., and Paule, M. G. (2013). Ketamine induces motor neuron toxicity and alters neurogenic and proneural gene expression in zebrafish. *J. Appl. Toxicol.* 33, 410–417. doi: 10.1002/jat.1751
- Kinoshita, T., Haruta, Y., Sakamoto, C., and Imaoka, S. (2011). Antagonistic role of XESR1 and XESR5 in mesoderm formation in *Xenopus laevis*. *Int. J. Dev. Biol.* 55, 25–31. doi: 10.1387/ijdb.092990tk
- Kirby, T. (2015). Ketamine for depression: the highs and lows. *Lancet Psychiatry* 2, 783–784.
- Klymkowsky, M. W., Rossi, C. C., and Artinger, K. B. (2010). Mechanisms driving neural crest induction and migration in the zebrafish and *Xenopus laevis*. *Cell Adh. Migr.* 4, 595–608.
- Kuriyama, S., Lupo, G., Ohta, K., Ohnuma, S., Harris, W. A., and Tanaka, H. (2006). Tsukushi controls ectodermal patterning and neural crest specification in *Xenopus* by direct regulation of BMP4 and X-delta-1 activity. *Development* 133, 75–88.
- Lantz-McPeak, S., Guo, X., Cuevas, E., Dumas, M., Newport, G. D., Ali, S. F., et al. (2015). Developmental toxicity assay using high content screening of zebrafish embryos. *J. Appl. Toxicol.* 35, 261–272. doi: 10.1002/jat.3029
- Lee, E. E., Della Selva, M. P., Liu, A., and Himelhoch, S. (2015). Ketamine as a novel treatment for major depressive disorder and bipolar depression: a systematic review and quantitative meta-analysis. *Gen. Hosp. Psychiatry* 37, 178–184. doi: 10.1016/j.genhosppsych.2015.01.003
- Li, H. Y., Bourdelas, A., Carron, C., Gomez, C., Boucaut, J. C., and Shi, D. L. (2006). *FGF8*, *Wnt8* and *Myf5* are target genes of Tbx6 during anteroposterior specification in *Xenopus* embryo. *Dev. Biol.* 290, 470–481.
- Li, J. H., Vicknasingam, B., Cheung, Y. W., Zhou, W., Nurhidayat, A. W., Jarlais, D. C., et al. (2011). To use or not to use: an update on licit and illicit ketamine use. *Subst. Abuse Rehabil.* 2, 11–20. doi: 10.2147/SAR.S15458
- Linker, C., De Almeida, I., Papanayotou, C., Stower, M., Sabado, V., Ghorani, E., et al. (2009). Cell communication with the neural plate is required for induction of neural markers by BMP inhibition: evidence for homeogenetic induction and implications for *Xenopus* animal cap and chick explant assays. *Dev. Biol.* 327, 478–486. doi: 10.1016/j.ydbio.2008.12.034
- Luo, T., Lee, Y. H., Saint-Jeannet, J. P., and Sargent, T. D. (2003). Induction of neural crest in *Xenopus* by transcription factor AP2alpha. *Proc. Natl. Acad. Sci. U.S.A.* 100, 532–537.
- Luo, T., Matsuo-Takasaki, M., and Sargent, T. D. (2001). Distinct roles for Distal-less genes *Dlx3* and *Dlx5* in regulating ectodermal development in *Xenopus*. *Mol. Reprod. Dev.* 60, 331–337.
- Luo, T., Matsuo-Takasaki, M., Thomas, M. L., Weeks, D. L., and Sargent, T. D. (2002). Transcription factor AP-2 is an essential and direct regulator of epidermal development in *Xenopus*. *Dev. Biol.* 245, 136–144.
- McLarren, K. W., Litsiou, A., and Streit, A. (2003). DLX5 positions the neural crest and preplacode region at the border of the neural plate. *Dev. Biol.* 259, 34–47.
- Mead, T. J., and Yutzey, K. E. (2012). Notch pathway regulation of neural crest cell development in vivo. *Dev. Dyn.* 241, 376–389. doi: 10.1002/dvdy.23717
- Milet, C., and Monsoro-Burq, A. H. (2012). Neural crest induction at the neural plate border in vertebrates. *Dev. Biol.* 366, 22–33. doi: 10.1016/j.ydbio.2012.01.013
- Mizuseki, K., Kishi, M., Matsui, M., Nakanishi, S., and Sasai, Y. (1998). *Xenopus Zic-related-1* and *Sox-2*, two factors induced by chordin, have distinct activities in the initiation of neural induction. *Development* 125, 579–587.
- Monsoro-Burq, A. H. (2015). PAX transcription factors in neural crest development. *Semin. Cell Dev. Biol.* 44, 87–96. doi: 10.1016/j.semcdb.2015.09.015
- Monsoro-Burq, A. H., Fletcher, R. B., and Harland, R. M. (2003). Neural crest induction by paraxial mesoderm in *Xenopus* embryos requires FGF signals. *Development* 130, 3111–3124.
- Monsoro-Burq, A. H., Wang, E., and Harland, R. (2005). *Msx1* and *Pax3* cooperate to mediate FGF8 and WNT signals during *Xenopus* neural crest induction. *Dev. Cell* 8, 167–178.
- Montagner, M., Martello, G., and Piccolo, S. (2016). Monitoring Smad activity in vivo using the *Xenopus* model system. *Methods Mol. Biol.* 1344, 245–259. doi: 10.1007/978-1-4939-2966-5_15
- Mumm, J. S., Schroeter, E. H., Saxena, M. T., Griesemer, A., Tian, X., Pan, D. J., et al. (2000). A ligand-induced extracellular cleavage regulates gamma-secretase-like proteolytic activation of Notch1. *Mol. Cell.* 5, 197–206.
- Nakata, K., Koyabu, Y., Aruga, J., and Mikoshiba, K. (2000). A novel member of the *Xenopus Zic* family, *Zic5*, mediates neural crest development. *Mech. Dev.* 99, 83–91.
- Nichane, M., de Croze, N., Ren, X., Souopgui, J., Monsoro-Burq, A. H., and Bellefroid, E. J. (2008a). Hairy2-Id3 interactions play an essential role in *Xenopus* neural crest progenitor specification. *Dev. Biol.* 322, 355–367. doi: 10.1016/j.ydbio.2008.08.003
- Nichane, M., Ren, X., Souopgui, J., and Bellefroid, E. J. (2008b). Hairy2 functions through both DNA-binding and non DNA-binding mechanisms at the neural plate border in *Xenopus*. *Dev. Biol.* 322, 368–380. doi: 10.1016/j.ydbio.2008.07.026
- Nyholm, M. K., Wu, S. F., Dorsky, R. I., and Grinblat, Y. (2007). The zebrafish *zic2a-zic5* gene pair acts downstream of canonical Wnt signaling to control cell proliferation in the developing tectum. *Development* 134, 735–746.
- Okamura, Y., and Saga, Y. (2008). Notch signaling is required for the maintenance of enteric neural crest progenitors. *Development* 135, 3555–3565. doi: 10.1242/dev.022319
- Oschwald, R., Richter, K., and Grunz, H. (1991). Localization of a nervous system-specific class II beta-tubulin gene in *Xenopus laevis* embryos by whole-mount in situ hybridization. *Int. J. Dev. Biol.* 35, 399–405.
- Reardon, S. (2015). Rave drug tested against depression. *Nature* 517, 130–131.
- Revinski, D. R., Paganelli, A. R., Carrasco, A. E., and Lopez, S. L. (2010). Delta-Notch signaling is involved in the segregation of the three germ layers in *Xenopus laevis*. *Dev. Biol.* 339, 477–492. doi: 10.1016/j.ydbio.2010.01.010

- Robinson, B. L., Dumas, M., Paule, M. G., Ali, S. F., and Kanungo, J. (2015). Opposing effects of ketamine and acetyl L-carnitine on the serotonergic system of zebrafish. *Neurosci. Lett.* 607, 17–22. doi: 10.1016/j.neulet.2015.09.006
- Sasai, Y., Lu, B., Steinbeisser, H., Geissert, D., Gont, L. K., and De Robertis, B. N. (1994). *Xenopus chordin*: a novel dorsalizing factor activated by organizer-specific homeobox genes. *Cell* 79, 779–790.
- Schroeter, E. H., Kisslinger, J. A., and Kopan, R. (1998). Notch-1 signalling requires ligand-induced proteolytic release of intracellular domain. *Nature* 393, 382–386.
- Shi, Y., Li, J., Chen, C., Gong, M., Chen, Y., Liu, Y., et al. (2014). 5-methyltetrahydrofolate rescues alcohol-induced neural crest cell migration abnormalities. *Mol. Brain* 7:67. doi: 10.1186/s13041-014-0067-9
- Shi, Y., Zhao, S., Li, J., and Mao, B. (2009). Islet-1 is required for ventral neuron survival in *Xenopus*. *Biochem. Biophys. Res. Commun.* 388, 506–510. doi: 10.1016/j.bbrc.2009.08.017
- Shyamala, K., Yanduri, S., Girish, H. C., and Murgod, S. (2015). Neural crest: the fourth germ layer. *J. Oral Maxillofac. Pathol.* 19, 221–229. doi: 10.4103/0973-029X.164536
- Smith, J. C., Price, B. M., Green, J. B., Weigel, D., and Herrmann, B. G. (1991). Expression of a *Xenopus* homolog of *Brachyury* (T) is an immediate-early response to mesoderm induction. *Cell* 67, 79–87.
- Song, W., Nadeau, P., Yuan, M., Yang, X., Shen, J., and Yankner, B. A. (1999). Proteolytic release and nuclear translocation of Notch-1 are induced by presenilin-1 and impaired by pathogenic presenilin-1 mutations. *Proc. Natl. Acad. Sci. U.S.A.* 96, 6959–6963.
- Steventon, B., Araya, C., Linker, C., Kuriyama, S., and Mayor, R. (2009). Differential requirements of BMP and Wnt signalling during gastrulation and neurulation define two steps in neural crest induction. *Development* 136, 771–779. doi: 10.1242/dev.029017
- Steventon, B., Carmona-Fontaine, C., and Mayor, R. (2005). Genetic network during neural crest induction: from cell specification to cell survival. *Semin. Cell Dev. Biol.* 16, 647–654.
- Struhl, G., and Adachi, A. (1998). Nuclear access and action of notch in vivo. *Cell* 93, 649–660.
- Su, M. W., Suzuki, H. R., Solorsh, M., and Ramirez, F. (1991). Progressively restricted expression of a new homeobox-containing gene during *Xenopus laevis* embryogenesis. *Development* 111, 1179–1187.
- Takahashi, Y., Sipp, D., and Enomoto, H. (2013). Tissue interactions in neural crest cell development and disease. *Science* 341, 860–863. doi: 10.1126/science.1230717
- Theveneau, E., and Mayor, R. (2012). Neural crest delamination and migration: from epithelium-to-mesenchyme transition to collective cell migration. *Dev. Biol.* 366, 34–54. doi: 10.1016/j.ydbio.2011.12.041
- Tribulo, C., Aybar, M. J., Nguyen, V. H., Mullins, M. C., and Mayor, R. (2003). Regulation of *Msx* genes by a Bmp gradient is essential for neural crest specification. *Development* 130, 6441–6452.
- Trost, A., Schroedl, F., Lange, S., Rivera, F. J., Tempfer, H., Korntner, S., et al. (2013). Neural crest origin of retinal and choroidal pericytes. *Invest. Ophthalmol. Vis. Sci.* 54, 7910–7921. doi: 10.1167/iovs.13-12946
- Vega-Lopez, G. A., Bonano, M., Tribulo, C., Fernandez, J. P., Aguero, T. H., and Aybar, M. J. (2015). Functional analysis of Hairy genes in *Xenopus* neural crest initial specification and cell migration. *Dev. Dyn.* 244, 988–1013. doi: 10.1002/dvdy.24295
- Wang, R., Zhang, M., Zhou, W., Ly, P. T., Cai, F., and Song, W. (2011). NF-kappaB signaling inhibits ubiquitin carboxyl-terminal hydrolase L1 gene expression. *J. Neurochem.* 116, 1160–1170. doi: 10.1111/j.1471-4159.2011.07172.x
- Zhang, Z., Nadeau, P., Song, W., Donoviel, D., Yuan, M., Bernstein, A., et al. (2000). Presenilins are required for gamma-secretase cleavage of beta-APP and transmembrane cleavage of Notch-1. *Nat. Cell Biol.* 2, 463–465.
- Zhang, Z., Shi, Y., Zhao, S., Li, J., Li, C., and Mao, B. (2014). *Xenopus* Nkx6.3 is a neural plate border specifier required for neural crest development. *PLOS ONE* 9:e115165. doi: 10.1371/journal.pone.0115165

Conflict of Interest Statement: The authors declare that the research was conducted in the absence of any commercial or financial relationships that could be construed as a potential conflict of interest.

Copyright © 2018 Shi, Li, Chen, Xia, Li, Zhang, Xu, Li, Zhou and Song. This is an open-access article distributed under the terms of the Creative Commons Attribution License (CC BY). The use, distribution or reproduction in other forums is permitted, provided the original author(s) and the copyright owner are credited and that the original publication in this journal is cited, in accordance with accepted academic practice. No use, distribution or reproduction is permitted which does not comply with these terms.