



# The Adenosinergic Signaling: A Complex but Promising Therapeutic Target for Alzheimer's Disease

Lucrezia Cellai<sup>†</sup>, Kevin Carvalho<sup>†</sup>, Emilie Faivre, Aude Deleau, Didier Vieau, Luc Buée, David Blum<sup>\*</sup>, Céline Mériaux<sup>‡</sup> and Victoria Gomez-Murcia<sup>‡</sup>

Institut National de la Santé et de la Recherche Médicale, CHU Lille, UMR-S 1172-JPArc, LabEx DISTALZ, Université de Lille, Lille, France

## OPEN ACCESS

### Edited by:

Dmitry Lim,  
Università degli Studi del Piemonte  
Orientale, Italy

### Reviewed by:

Eric Boué-Grabot,  
Université de Bordeaux, France  
Paula Canas,  
University of Coimbra, Portugal

### \*Correspondence:

David Blum  
david.blum@inserm.fr  
orcid.org/0000-0001-5691-431X

<sup>†</sup>Co-first authors

<sup>‡</sup>Co-last authors

### Specialty section:

This article was submitted to  
Neurodegeneration,  
a section of the journal  
Frontiers in Neuroscience

**Received:** 16 April 2018

**Accepted:** 11 July 2018

**Published:** 03 August 2018

### Citation:

Cellai L, Carvalho K, Faivre E,  
Deleau A, Vieau D, Buée L, Blum D,  
Mériaux C and Gomez-Murcia V  
(2018) The Adenosinergic Signaling:  
A Complex but Promising Therapeutic  
Target for Alzheimer's Disease.  
*Front. Neurosci.* 12:520.  
doi: 10.3389/fnins.2018.00520

Alzheimer's disease (AD) is the most common neurodegenerative disorder in elderly people. AD is characterized by a progressive cognitive decline and it is neuropathologically defined by two hallmarks: extracellular deposits of aggregated  $\beta$ -amyloid ( $A\beta$ ) peptides and intraneuronal fibrillar aggregates of hyper- and abnormally phosphorylated Tau proteins. AD results from multiple genetic and environmental risk factors. Epidemiological studies reported beneficial effects of caffeine, a non-selective adenosine receptors antagonist. In the present review, we discuss the impact of caffeine and of adenosinergic system modulation on AD, in terms of pathology and therapeutics.

**Keywords:** Alzheimer's disease, memory, caffeine, adenosine, adenosine receptors

## INTRODUCTION

Alzheimer's disease (AD) is the most common form of dementia, representing 70% of cases affecting more than 40 millions patients worldwide (Scheltens et al., 2016). The anatomopathological diagnosis of AD is based on the presence of two lesions: amyloid deposits and neurofibrillary tangles. Amyloid deposits are composed of extracellular accumulation of beta amyloid peptides ( $A\beta$ ) resulting from the sequential cleavage of the amyloid precursor protein (APP) by beta- and gamma-secretases (De Strooper, 2010). Neurofibrillary tangles result from intra-neuronal accumulation of hyper- and abnormally phosphorylated Tau protein (defined as "Tau pathology"). Although the development and progression of both lesions are involved in the evolution of clinical deficits, the spreading of Tau pathology has been suggested as a more reliable predictor for cognitive impairment (Brier et al., 2016). In parallel, complex neuroinflammatory and neuroimmune processes, involving innate (notably microglia, astrocytes) and adaptive (T cells, Tregs cells) brain resident or peripheral immune cells, were shown to be strongly involved in both the development of AD lesions and cognitive deficits (for reviews see Dansokho et al., 2017; Leyns and Holtzman, 2017; Ising and Heneka, 2018; Laurent et al., 2018). The role of immune system into the AD pathophysiological process is supported by the findings of several variants in immunity-related genes resulted as susceptibility markers in genome wide association studies (i.e., CR1, SPI1, the MS4As, TREM2, ABCA7, CD33, and INPP5D; Efthymiou and Goate, 2017).

Alzheimer's disease is mostly a sporadic disease (Scheltens et al., 2016); indeed, the etiological mechanisms underlying neuropathological changes in AD remain unclear so far, but they appear to be dependent on both genetic and environmental factors (Reitz et al., 2011). A recent study estimated that around 35% of dementia is attributable to a combination of modifiable lifestyle factors, some of them linked to cardio-metabolic changes (Livingston et al., 2017). Interestingly, compelling epidemiologic evidences support that habitual consumption of caffeine is prone to

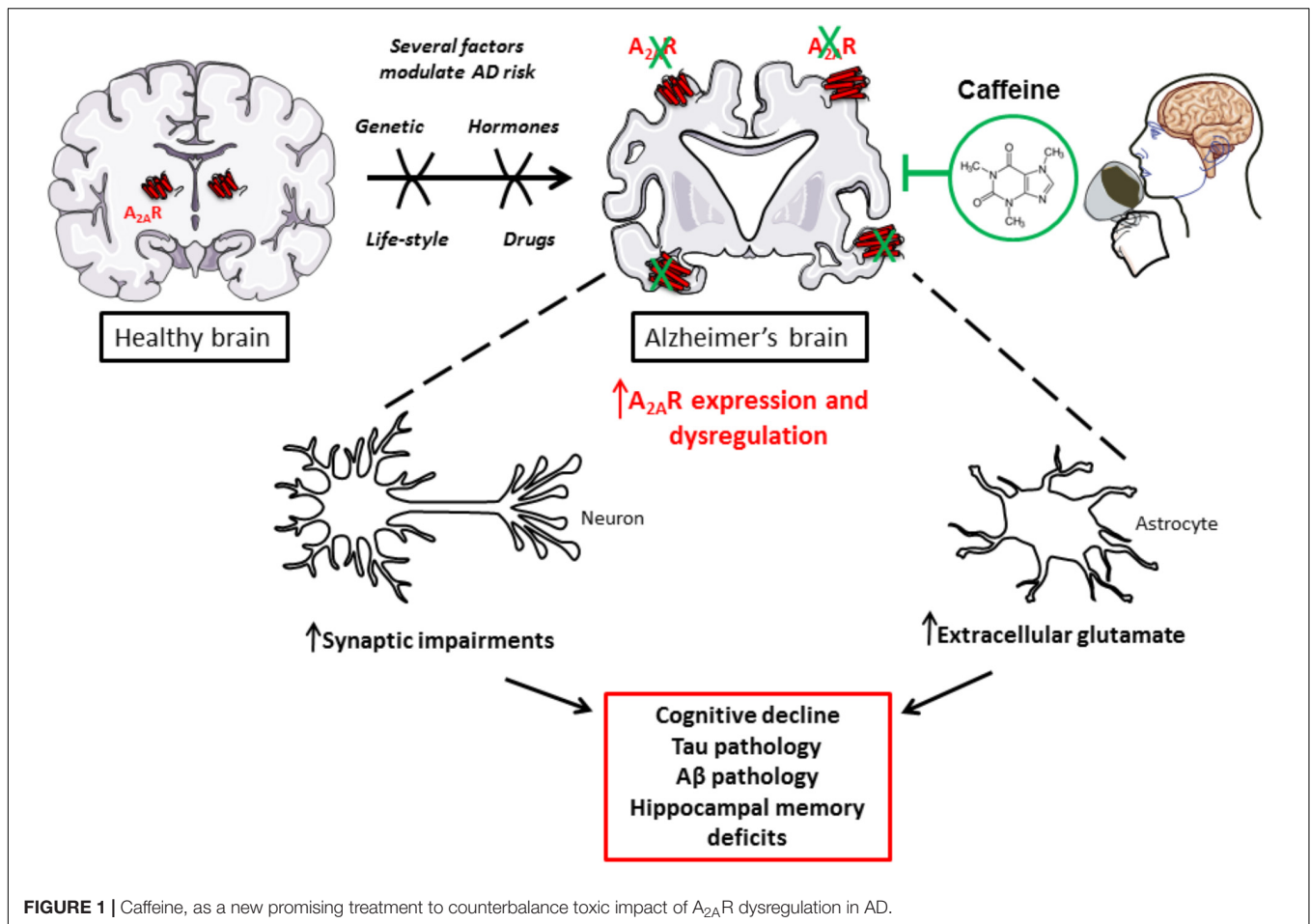
reduce cognitive decline with aging and to reduce AD risk (reviewed in Flaten et al., 2014; Cunha, 2016). This mini-review will be focused on the current knowledge regarding the mechanisms underlying caffeine beneficial effects in AD, and specifically on how such positive effects are ascribable to an impact of caffeine on adenosinergic signaling (Figure 1).

## CAFFEINE, COGNITION, AND AD

The pharmacological actions of caffeine are complex and greatly differ depending on its dosage and concentration. Its effect may also depend on its metabolites: paraxanthine (1,7-dimethylxanthine), theophylline (3,7-dimethylxanthine), and theobromine (1,3-dimethylxanthine). Pharmacokinetics and metabolism of caffeine have been extensively reviewed recently (Nehlig, 2018).

In healthy subjects, besides its positive effect on mood, alertness, attention and information processing (Sawyer et al., 1982; Fredholm et al., 1999, 2005; Smit and Rogers, 2000; Lorist and Tops, 2003; Fisone et al., 2004; Haskell et al., 2005), caffeine has also been shown to favor neuronal excitability in neocortex (Kerkhofs et al., 2017) and memory consolidation (Borota et al., 2014). Its widespread consumption and beneficial impact on cognitive functions maintenance emphasizes the need to study the effects of caffeine consumption on AD pathophysiology and aging-associated decline. In 2002, a retrospective study supported an inverse correlation between caffeine intake and age at AD onset. Indeed, AD patients presented an average daily caffeine intake of about  $74 \pm 98$  mg during the 20 years preceding AD diagnosis, whereas age-matched controls had a larger average daily caffeine intake of  $199 \pm 136$  mg during the corresponding 20 years of their lifetime (Maia and de Mendonça, 2002). Five years later, a 4-year-long observational study, in a group of over 7,000 participants, revealed a significantly lower deterioration in verbal retrieval and visuospatial memory in >65 years old women, who consumed over 3 cups of coffee a day as compared to women who consumed 1 cup of coffee a day or less. However, such findings were not reported in men (Ritchie et al., 2007). A longitudinal population-based study found that a daily intake of 3–5 cups of coffee in middle-aged people lower the risk of AD and dementia disease by around 65% as compared to lower amounts of coffee (Eskelinen et al., 2009). A meta-analysis of 9 cohorts and 2 case-control studies also reported an inverse correlation between AD incidence and caffeine intake (Santos et al., 2010). In contrast, the Honolulu-Asian Aging Study reported no significant correlation between midlife coffee or caffeine consumption and the risk of dementia or cognitive impairment. However, the authors reported that the higher caffeine intake (>277.5 mg per day) was associated with a decreased risk to present, at autopsy, any of the neuropathological lesions, i.e., AD-related lesions, microvascular ischemic lesions, cortical Lewy bodies, hippocampal sclerosis, or generalized atrophy (Gelber et al., 2011). A further possible positive impact of caffeine on cerebrospinal fluid (CSF) production and turnover, finally facilitating A $\beta$  clearance, was even suggested (Wostyn et al., 2011).

In line with the latter epidemiological and neuropathological observations, compelling experimental evidence, both *in vivo* and *in vitro*, give reliable proof-of-concept that caffeine has a strong potential toward AD pathology and associated cognitive deficits. In seminal studies, Arendash et al. demonstrated that caffeine intake in transgenic mice overexpressing mutated APP (APPsw) alleviates cognitive decline induced by A $\beta$  and lowers the concentration of this neurotoxic peptide in both preventive and therapeutic paradigms. APPsw mice chronically treated from 4 to 9.5 months of age with caffeinated water (300 mg/l, corresponding to 500 mg per day in humans), exhibited improved working and spatial memories as well as reduced levels of hippocampal A $\beta_{1-40}$  and A $\beta_{1-42}$ . At late pathological stages (18–19 month), APPsw mice treated similarly for 4–5 weeks display reversed memory deficits and reduced A $\beta$  deposits and soluble A $\beta$  levels in entorhinal cortex as well as in hippocampus (Arendash et al., 2006, 2009). Furthermore, in SweAPP N2a cell cultures – murine neuron-like cells transfected with the human “Swedish” mutant APP – the treatment with different concentrations of caffeine (below 10  $\mu$ M) induced a reduced production of A $\beta_{1-40}$  and A $\beta_{1-42}$  (Arendash et al., 2006). Molecular dynamics simulations recently suggested that the hydrophobic core-recognition motif of amyloid peptide formation could be physically blocked by caffeine, thereby abolishing the self-assembly formation (Sharma and Paul, 2016). Our previous studies also emphasize that chronic caffeine treatment prevents the development of spatial memory deficits, reduces hippocampal Tau phosphorylation and proteolytic fragments as well as mitigates parenchymal neuroinflammation in a model of AD-like Tau pathology (Laurent et al., 2014). All these data are in accordance with the decrease of A $\beta$  production and Tau phosphorylation in rabbits fed with a high cholesterol diet – an experimental model for sporadic AD – treated with low and high doses of caffeine (0.5–30 mg per day, corresponding to a maximal 60 mg per day in humans) (Prasanthi et al., 2010). Thus, a growing body of evidence indicates that caffeine is able to reduce behavioral and pathological features associated with AD in models of sporadic and early onset (genetically-linked) AD. It is however important to mention that a recent study performed in transgenic mice developing both amyloid and Tau lesions suggests that chronic caffeine consumption may lead to adverse effect notably by enhancing BPSD (Behavioral and Psychological Symptoms of Dementia)-like symptoms that may interfere with the ability of caffeine to normalize memory deficits (Baeta-Corral et al., 2018), underlying possible side effects that need to be carefully evaluated in future trials in patients. Overall, while a large amount of epidemiological and experimental evidence implies that caffeine and associated methylxanthines may have beneficial long-term protective effects against late-life cognitive impairment or decline, clinical evaluations are still warranted. Relationships between caffeine levels and AD biomarkers remain also unclear so far (Travassos et al., 2015). Therefore, a long-term interventional randomized controlled study taking into account CSF and blood biomarkers but also possible side effects is required to definitively conclude on the therapeutic potential of caffeine in AD and dementia. Possibly, future studies will also need to evaluate whether caffeine



**FIGURE 1** | Caffeine, as a new promising treatment to counterbalance toxic impact of A<sub>2A</sub>R dysregulation in AD.

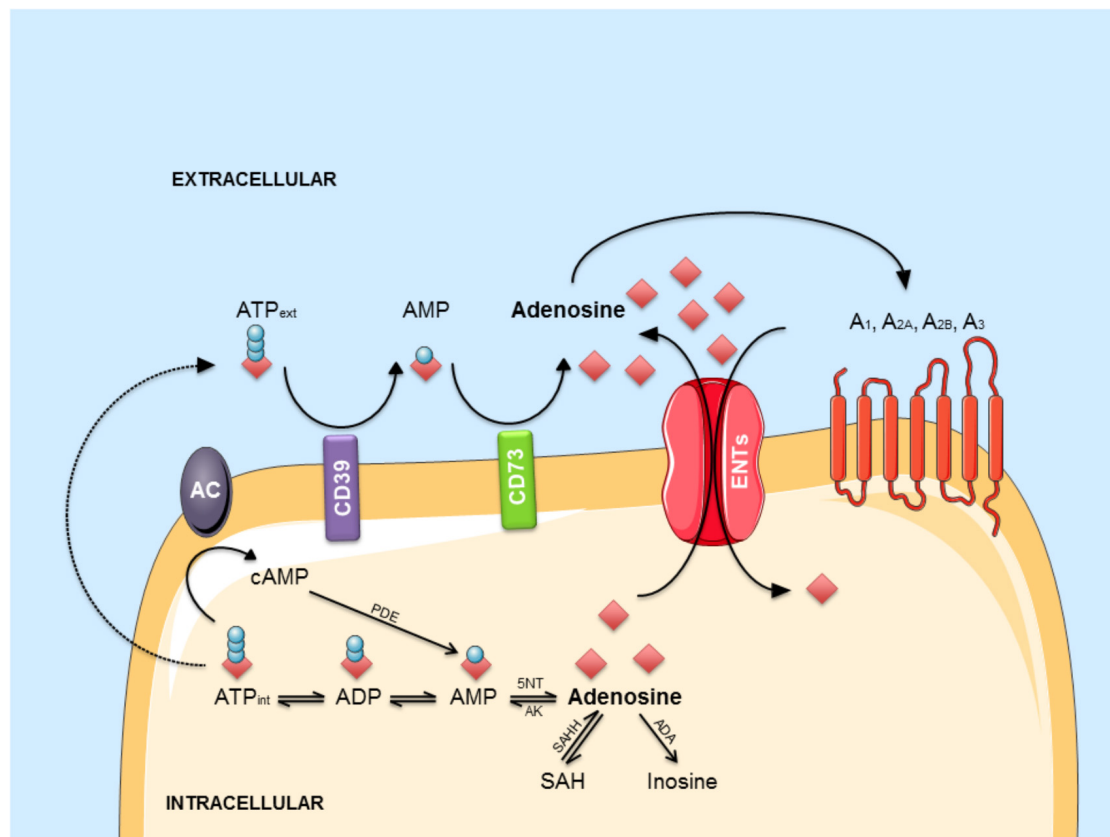
itself or its metabolites are presumably responsible for clinical and metabolic changes. Indeed, previous data indicate that the CSF and plasma level of one of the main metabolites of caffeine, theobromine, could be associated with Aβ<sub>42</sub> CSF levels suggesting that it may have a particular impact (Travassos et al., 2015).

## CAFFEINE, ADENOSINE, AND ADENOSINE RECEPTORS

Under normal consumption conditions, caffeine acts as a non-selective competitive antagonist of the four subtypes of G-protein-coupled adenosine P1 receptors: A<sub>1</sub>, A<sub>2A</sub>, A<sub>2B</sub>, and A<sub>3</sub> whose endogenous ligand is adenosine, a purinergic nucleoside. Among them, A<sub>1</sub> and A<sub>2A</sub> receptor subtypes are the most abundant in the mammalian brain. A<sub>1</sub>Rs are widely distributed throughout the central nervous system (CNS) while A<sub>2A</sub>Rs are mainly expressed by striato-pallidal medium spiny neurons in the striatum. However, A<sub>2A</sub>R is largely expressed within other area of the CNS at lower levels. A<sub>1</sub>R and A<sub>2A</sub>R are both G-protein-coupled receptor, the former being coupled to inhibitory G proteins (G<sub>i</sub>), the latter to activatory G proteins (G<sub>olf</sub> or G<sub>s</sub>; Fredholm et al., 2005). Adenosine receptors are expressed by

neurons, glial and endothelial cells. A<sub>1</sub>Rs particularly regulate excitatory transmission at both pre- and post-synaptic sites. In synapses, A<sub>2A</sub>Rs are known to fine-tune synaptic plasticity, notably by regulating presynaptic release of glutamate (Cunha, 2016). Recent data emphasized an important role of A<sub>2A</sub>Rs in regulating glutamate and GABA uptake by astrocytes (Matos et al., 2012a,b; Cristóvão-Ferreira et al., 2013).

Adenosine can be generated from adenine nucleosides present inside the cells or on the outer side of the plasma membrane (Zimmermann, 2000), via intracellular or extracellular 5'-nucleotidases enzymes (Figure 2). At extracellular level, several mechanisms can contribute to adenosine generation. ATP can be released by distinct mechanisms: (1) by exocytosis from both glial cells (Imura et al., 2013) or neurons, where it is released as co-transmitter and as a neurotransmitter acting on P2 purinergic receptors (Zimmermann, 1994; Burnstock, 2007); (2) by lysosomal exocytosis (Jung et al., 2013, 2014) or (3) via hemichannels (Chever et al., 2014; Lopatář et al., 2015; Orellana et al., 2015; Orellana, 2016). Cyclic adenosine 3'-5' monophosphate (cAMP) can also be released by cells via a probenecid-sensitive transporter or converted into 5'-AMP inside the cells and then released (Rosenberg and Li, 1995; Brundege et al., 1997). Once out of the cell, these nucleotides undergo an enzymatic conversion through coupled



**FIGURE 2 |** The adenosinergic pathway. Intracellular adenosine is generated from AMP or SAH. After intracellular uptake, it is phosphorylated to AMP by AK or converted into inosine by ADA. ATP is released into the extracellular environment and hydrolyzed by the concerted action of CD39 and CD73 into adenosine. In response to metabolic stress, adenosine accumulates in the extracellular environment. Extracellular adenosine can bind to four different G-protein-coupled receptors (A<sub>1</sub>, A<sub>2A</sub>, A<sub>2B</sub>, and A<sub>3</sub>) or be transported back into the cell via ENTs. Abbreviations: A<sub>1</sub>, A<sub>2A</sub>, A<sub>2B</sub>, A<sub>3</sub>, adenosine receptors; AC, adenylyl cyclase; ADA, adenosine deaminase; AK, adenosine kinase; AMP, adenosine monophosphate; ATP, adenosine triphosphate; cAMP, cyclic AMP; ENT, equilibrative nucleoside transporter; 5NT, 5'-nucleotidase; PDE, phosphodiesterase; SAH, S-adenosyl-homocysteine; SAHH, S-adenosyl-homocysteine hydrolase.

ectonucleotidases CD39/CD73 which sequentially converts ATP/ADP to AMP and AMP to adenosine (Zimmermann, 2006; Zimmermann et al., 2012). Adenosine may be then further transformed to inosine by extracellular adenosine deaminase enzymes (ADA) or may enter inside the cell through bidirectional equilibrative nucleoside transporters, ENT1 and ENT2, where it may undergo intracellular ADA action thus generating inosine, or it may be phosphorylated to AMP by adenosine kinases (ADK; see Borea et al., 2016). In the cytosol, AMP-specific 5'-nucleotidase, mainly accounts for adenosine generation during enhanced metabolic load (Hunsucker et al., 2001) while S-adenosylhomocysteine (SAH) pathway plays a negligible role (see Latini and Pedata, 2001) except regarding the non-receptor mediated epigenetics effect of adenosine (Williams-Karnesky et al., 2013). Once generated, intracellularly-generated adenosine can be released via ENT1 and ENT2 in the outer space of the cell (King et al., 2006) contributing to the maintenance of a basal adenosine tone (Lee et al., 2018).

Extracellular adenosine is central in the regulation of several brain functions as it is tightly linked to the energetic state of neurons; its local increase notably reflects the depletion of

ATP intracellular storage (Parkinson et al., 2011) that may be rather due to increased metabolic demand than metabolite availability. This happens in several conditions, including hypoxia, hypoglycemia and high frequency stimulation/seizures. It has also been found that adenosine extracellular concentration varies during physiological processes, where it represents a brain fatigue factor (Porkka-Heiskanen et al., 1997), thus, playing a role in sleep-wake cycle (reviewed in Murillo-Rodriguez et al., 2003; Porkka-Heiskanen and Kalinchuk, 2011; Chen, 2014; Huang et al., 2014), and cerebral blood flow (Gordon et al., 2008; McClure et al., 2011).

In neuronal cells, adenosine regulates survival and neurotransmitter release (Cunha et al., 2008). In glial cells, it is involved in the control of differentiation (Coppi et al., 2013, 2015), reactivity (Newell et al., 2015; Madeira et al., 2016; Liu et al., 2018), proliferation (George et al., 2015), and neurotransmitter uptake (Matos et al., 2012a,b, 2013; Cristóvão-Ferreira et al., 2013). The role of the physiological increased adenosine tone has been interpreted as involved in neuronal homeostasis, representing a sort of link between energy metabolism and neuronal excitability. Instead, under

condition of cellular stress, adenosine tone is raised up that could eventually counteract glutamate neurotransmission (Brambilla et al., 2005). This phenomenon occurs in pathological contexts such as epilepsy (Ilie et al., 2012; Boison, 2016; Cieslak et al., 2018), ischemia or oxygen-glucose deprivation (Melani et al., 1999; zur Nedden et al., 2014), inflammation (Mukandala et al., 2016), and AD (Alonso-Andrés et al., 2018).

To which extent changes of adenosine level, recently observed in the temporal cortex of AD patients (Alonso-Andrés et al., 2018), are involved in the pathophysiological development remains an unsolved question. On the one hand, an increase in the endogenous level of adenosine in the diseased parenchyma could represent a beneficial response, at least at short-term. Indeed, first, increased adenosine tone allows a higher production of SAH, which suppresses methyltransferase activity and subsequently reduces DNA methylation (Williams-Karnesky et al., 2013). DNA methylation is an interesting aspect of the adenosine effect to be taken into account, since dynamic and complex changes in DNA methylation profiles have been reported in the brain of both mice and patients with AD (Sanchez-Mut et al., 2013; Qazi et al., 2018). Secondly, increased adenosine would be prone to favor A<sub>1</sub>R activation, presumably normalizing the hyperexcitability and excitotoxicity network occurring in AD parenchyma (Blum et al., 2003; Cunha, 2016). Therefore, increasing adenosine tone, for instance by blocking ENT1 transporter, could be seen as a therapeutic option in AD as nicely recently demonstrated (Lee et al., 2018). Given that chronic A<sub>1</sub>R activation favors activation effect and excitotoxicity occurrence due to receptor internalization (Blum et al., 2003) and that A<sub>2A</sub>R overactivation leads to memory impairments and AD pathology development (see below), the benefits afforded by a chronic increase of adenosine tone (Lee et al., 2018) are presumably not mediated by receptor-mediated effects. On the other hand, brain adenosine surge in AD could represent a detrimental signal fitting with the above-mentioned ability of caffeine to prevent AD pathology and related cognitive deficits. Several publications emphasize that blockade of A<sub>2A</sub> (see below) but also A<sub>1</sub> (Dennissen et al., 2016) and A<sub>3</sub> (Li et al., 2015) receptors might be of interest in the treatment of AD.

## THE ROLE OF ADENOSINERGIC A<sub>2A</sub> RECEPTOR IN AD

Persisting higher adenosine tone is thought to preferentially lead to A<sub>2A</sub>R activation over A<sub>1</sub>R (Cunha, 2016). Several works argue for a detrimental impact of A<sub>2A</sub>R in AD pathophysiology, which could readily explain the beneficial effects of caffeine. In line with a central role of A<sub>2A</sub>Rs in AD, recently, an association between a polymorphism of the ADORA2A gene with hippocampal volume in mild cognitive impairment and AD was reported (Horgusluoglu-Moloch et al., 2017). A<sub>2A</sub>R expression and function have been shown abnormally enhanced in AD brain and, accordingly, blocking A<sub>2A</sub>R has been proven beneficial; thus, underlying the detrimental contributing impact of the enhancement of A<sub>2A</sub>R signaling in the pathological brain. Indeed,

besides a higher adenosine tone, A<sub>2A</sub>R expression and function appear to be dysregulated in AD. Early studies on cortical plasma membranes revealed that cortex of AD patients exhibit enhanced A<sub>2A</sub>R binding and response (Albasanz et al., 2008). More recent data emphasized that A<sub>2A</sub>R expression is abnormally increased not only in brain cortical parenchyma of AD patients (Orr et al., 2015; Temido-Ferreira et al., 2018) but also on transgenic mouse models (Viana da Silva et al., 2016; Faivre et al., 2018; Lee et al., 2018; Orr et al., 2018; Silva et al., 2018). A<sub>2A</sub>R changes have been shown to occur at both neuronal/synaptic (Viana da Silva et al., 2016; Temido-Ferreira et al., 2018; Silva et al., 2018) and astroglial (Orr et al., 2015, 2018; Lee et al., 2018; Faivre et al., 2018) levels. Interestingly, the sole activation of A<sub>2A</sub>R induced by a brain injection of an agonist is sufficient to promote memory deficits (Pereira et al., 2005; Pagnussat et al., 2015). In addition, conditional neuronal activation of A<sub>2A</sub>R or related transduction pathways using optogenetics (Li et al., 2015) promotes memory and plasticity deficits in hippocampus (Giménez-Llort et al., 2007; Batalha et al., 2013, 2016; Temido-Ferreira et al., 2018). With regards to astrocytes, activating A<sub>2A</sub>R (Matos et al., 2013) or associated transduction pathways in astrocytes is also prone to favor the emergence of hippocampal deficits with impaired glutamate uptake, thanks to a regulation of the Na<sup>+</sup>/K<sup>+</sup> ATPase regulating GLT-1 transporter, presumably favoring memory deficits (Matos et al., 2012a,b, 2013; Orr et al., 2015). On the other side, A<sub>2A</sub>R blockade or deletion was also found to counteract synaptotoxicity and memory deficits acutely induced by β-amyloid peptides (Dall'igna et al., 2003, 2007; Canas et al., 2009). Furthermore, several works underline that blocking A<sub>2A</sub>R using pharmacological or genetic tools improves memory deficits and even pathology as well as parenchymal inflammation in different experimental transgenic AD models chronically developing either amyloid burden and Tau pathology (Orr et al., 2015, 2018; Laurent et al., 2016; Faivre et al., 2018; Silva et al., 2018). Even this still remains controversial (Lu et al., 2016), it is noteworthy that some data had indicated that A<sub>2A</sub>R might impact on the production of Aβ *in vitro* (Nagpure and Bian, 2014). Finally, this is in line with our observations that CD73 blockade, likely reducing adenosine tone and A<sub>2A</sub>R activity, favors the non-amyloidogenic pathway, counteracting Aβ formation. The overall view on A<sub>2A</sub>R as a therapeutic target thus looks promising.

It is notable that A<sub>2A</sub>R antagonism has been reported as a promising approach in Parkinson's Disease prone to counteract both motor, cognitive symptoms and α-synproteinopathy (Kachroo and Schwarzschild, 2012; Ferreira et al., 2016, 2018). While some clinical trials failed to demonstrate a large benefit of A<sub>2A</sub>R blockade as monotherapy in PD patients even reducing off-time (SYN-115; Hauser et al., 2014), the A<sub>2A</sub>R antagonist istradefylline (KW-6002) is still tested in phase III and it is already approved as therapeutic option for PD patients in Japan where it is early administered in association with L-DOPA to reduce motor symptoms and dyskinesia (Borea et al., 2016; Oertel and Schulz, 2016). Considering safety and tolerability of A<sub>2A</sub>R antagonists in PD trials, it is tempting to consider that a repurposing of these molecules could be of great interest in AD considering their ability to normalize cognitive and to reduce

several pathophysiological mechanisms, from synaptic deficits to lesion development passing through neuroinflammation.

## CONCLUSION

AD is an important medico-societal concern. Our current knowledge in the field supports that the dysregulation of the adenosinergic signaling is certainly important for the pathophysiological development of AD and constitutes a major therapeutic target that needs to be thoughtfully evaluated. Considering their known safety, evaluating caffeine and A<sub>2A</sub>R antagonists in clinical trials can be considered as a priority in the field. Whether modulating adenosine tone itself is a valuable strategy worth also to be investigated considering recent encouraging results (Lee et al., 2018), underlying mechanisms still need to be further elucidated. Owing to the important contribution of adenosine pathways to blood-brain-barrier permeability (Kim and Bynoe, 2015), physiological plasticity, neurotrophin actions (Rebola et al., 2008; Jerónimo-Santos et al., 2014) or even to the peripheral adaptive immune system lastly recognized as playing an important role in AD (Linden and Cekic, 2012; Antonioli et al., 2013; Laurent et al., 2018), careful investigations on processes underlying beneficial effects and potential side effects are warranted.

## REFERENCES

- Albasanz, J. L., Perez, S., Barrachina, M., Ferrer, I., and Martín, M. (2008). Up-regulation of adenosine receptors in the frontal cortex in Alzheimer's disease. *Brain Pathol.* 18, 211–219. doi: 10.1111/j.1750-3639.2007.00112.x
- Alonso-Andrés, P., Albasanz, J. L., Ferrer, I., and Martín, M. (2018). Purine-related metabolites and their converting enzymes are altered in frontal, parietal and temporal cortex at early stages of Alzheimer's disease pathology. *Brain Pathol.* doi: 10.1111/bpa.12592 [Epub ahead of print].
- Antonioli, L., Blandizzi, C., Pacher, P., and Haskó, G. (2013). Immunity, inflammation and cancer: a leading role for adenosine. *Nat. Rev. Cancer* 13, 842–857. doi: 10.1038/nrc3613
- Arendash, G. W., Mori, T., Cao, C., Mamcarz, M., Runfeldt, M., Dickson, A., et al. (2009). Caffeine reverses cognitive impairment and decreases brain amyloid-beta levels in aged Alzheimer's disease mice. *J. Alzheimers Dis.* 17, 661–680. doi: 10.3233/JAD-2009-1087
- Arendash, G. W., Schleif, W., Rezai-Zadeh, K., Jackson, E. K., Zacharia, L. C., Cracchiolo, J. R., et al. (2006). Caffeine protects Alzheimer's mice against cognitive impairment and reduces brain beta-amyloid production. *Neuroscience* 142, 941–952. doi: 10.1016/j.neuroscience.2006.07.021
- Baeta-Corral, R., Johansson, B., and Giménez-Llort, L. (2018). Long-term treatment with low-dose caffeine worsens BPSD-like profile in 3xTg-AD mice model of Alzheimer's disease and affects mice with normal aging. *Front. Pharmacol.* 9:79. doi: 10.3389/fphar.2018.00079
- Batalha, V. L., Ferreira, D. G., Coelho, J. E., Valadas, J. S., Gomes, R., Temido-Ferreira, M., et al. (2016). The caffeine-binding adenosine A<sub>2A</sub> receptor induces age-like HPA-axis dysfunction by targeting glucocorticoid receptor function. *Sci. Rep.* 6:31493. doi: 10.1038/srep31493
- Batalha, V. L., Pego, J. M., Fontinha, B. M., Costenla, A. R., Valadas, J. S., Baqi, Y., et al. (2013). Adenosine A<sub>2A</sub> receptor blockade reverts hippocampal stress-induced deficits and restores corticosterone circadian oscillation. *Mol. Psychiatry* 18, 320–331. doi: 10.1038/mp.2012.8
- Blum, D., Hourez, R., Galas, M.-C., Popoli, P., and Schiffrmann, S. N. (2003). Adenosine receptors and Huntington's disease: implications for pathogenesis and therapeutics. *Lancet Neurol.* 2, 366–374.

## AUTHOR CONTRIBUTIONS

LC, KC, DB, CM, and VG-M wrote the manuscript. LC, KC, EF, AD, DV, LB, DB, CM, and VG-M reviewed the manuscript.

## FUNDING

Our laboratory was supported by grants from France Alzheimer, Fondation de France, FHU VasCog research network, programmes d'Investissements d'Avenir LabEx (excellence laboratory) DISTALZ (Development of Innovative Strategies for a Transdisciplinary approach to Alzheimer's disease), ANR (ADORATAU and ADORASTraU to DB, SPREADTAU and GRAND to LB), Fondation pour la Recherche Médicale, LECMA/Alzheimer Forschung Initiative, Fondation Plan Alzheimer as well as Inserm, CNRS, Université Lille 2, Lille Métropole Communauté Urbaine, Région Nord/Pas-de-Calais, FEDER, DN2M, and FUI MEDIALZ. LC was supported by the Italian Society of Pharmacology (SIF) and LabEx DISTALZ. EF was supported by ANR ADORATAU and University of Lille. AD was supported by France Alzheimer. CM was supported by Région Hauts de France (COGNADORA). VG-M was supported by Fondation pour la Recherche Médicale (SPF20160936000).

- Boison, D. (2016). Adenosinergic signaling in epilepsy. *Neuropharmacology* 104, 131–139. doi: 10.1016/j.neuropharm.2015.08.046
- Borea, P. A., Gessi, S., Merighi, S., and Varani, K. (2016). Adenosine as a multi-signalling guardian angel in human diseases: When, where and how does it exert its protective effects? *Trends Pharmacol. Sci.* 37, 419–434. doi: 10.1016/j.tips.2016.02.006
- Borota, D., Murray, E., Keceli, G., Chang, A., Watabe, J. M., Ly, M., et al. (2014). Post-study caffeine administration enhances memory consolidation in humans. *Nat. Neurosci.* 17, 201–203. doi: 10.1038/nn.3623
- Brambilla, D., Chapman, D., and Greene, R. (2005). Adenosine mediation of presynaptic feedback inhibition of glutamate release. *Neuron* 46, 275–283. doi: 10.1016/j.neuron.2005.03.016
- Brier, M. R., Gordon, B., Friedrichsen, K., McCarthy, J., Stern, A., Christensen, J., et al. (2016). Tau and A $\beta$  imaging, CSF measures, and cognition in Alzheimer's disease. *Sci. Transl. Med.* 8:338ra66. doi: 10.1126/scitranslmed.aaf2362
- Brundege, J. M., Diao, L., Proctor, W. R., and Dunwiddie, T. V. (1997). The role of cyclic AMP as a precursor of extracellular adenosine in the rat hippocampus. *Neuropharmacology* 36, 1201–1210.
- Burnstock, G. (2007). Purine and pyrimidine receptors. *Cell. Mol. Life Sci.* 64, 1471–1483. doi: 10.1007/s00018-007-6497-0
- Canas, P. M., Porciúncula, L. O., Cunha, G. M. A., Silva, C. G., Machado, N. J., Oliveira, J. M. A., et al. (2009). Adenosine A<sub>2A</sub> receptor blockade prevents synaptotoxicity and memory dysfunction caused by beta-amyloid peptides via p38 mitogen-activated protein kinase pathway. *J. Neurosci.* 29, 14741–14751. doi: 10.1523/JNEUROSCI.3728-09.2009
- Chen, J.-F. (2014). Adenosine receptor control of cognition in normal and disease. *Int. Rev. Neurobiol.* 119, 257–307. doi: 10.1016/B978-0-12-801022-8.00012-X
- Chever, O., Lee, C.-Y., and Rouach, N. (2014). Astroglial connexin43 hemichannels tune basal excitatory synaptic transmission. *J. Neurosci.* 34, 11228–11232. doi: 10.1523/JNEUROSCI.0015-14.2014
- Cieslak, A., Smith, E. E., Lysack, J., and Ismail, Z. (2018). Case series of mild behavioral impairment: toward an understanding of the early stages of neurodegenerative diseases affecting behavior and cognition. *Int. Psychogeriatr.* 30, 273–280. doi: 10.1017/S1041610217001855

- Coppi, E., Cellai, L., Maraula, G., Dettori, I., Melani, A., Pugliese, A. M., et al. (2015). Role of adenosine in oligodendrocyte precursor maturation. *Front. Cell. Neurosci.* 9:155. doi: 10.3389/fncel.2015.00155
- Coppi, E., Cellai, L., Maraula, G., Pugliese, A. M., and Pedata, F. (2013). Adenosine A<sub>2A</sub> receptors inhibit delayed rectifier potassium currents and cell differentiation in primary purified oligodendrocyte cultures. *Neuropharmacology* 73, 301–310. doi: 10.1016/j.neuropharm.2013.05.035
- Cristóvão-Ferreira, S., Navarro, G., Brugarolas, M., Pérez-Capote, K., Vaz, S. H., Fattorini, G., et al. (2013). A1R-A2AR heteromers coupled to Gs and G<sub>i/o</sub> proteins modulate GABA transport into astrocytes. *Purinergic Signal.* 9, 433–449. doi: 10.1007/s11302-013-9364-5
- Cunha, G. M. A., Canas, P. M., Melo, C. S., Hockemeyer, J., Müller, C. E., Oliveira, C. R., et al. (2008). Adenosine A<sub>2A</sub> receptor blockade prevents memory dysfunction caused by  $\beta$ -amyloid peptides but not by scopolamine or MK-801. *Exp. Neurol.* 210, 776–781. doi: 10.1016/j.expneurol.2007.11.013
- Cunha, R. A. (2016). How does adenosine control neuronal dysfunction and neurodegeneration? *J. Neurochem.* 139, 1019–1055. doi: 10.1111/jnc.13724
- Dall'Igna, O. P., Fett, P., Gomes, M. W., Souza, D. O., Cunha, R. A., and Lara, D. R. (2007). Caffeine and adenosine A<sub>2A</sub> receptor antagonists prevent beta-amyloid (25-35)-induced cognitive deficits in mice. *Exp. Neurol.* 203, 241–245. doi: 10.1016/j.expneurol.2006.08.008
- Dall'Igna, O. P., Porciúncula, L. O., Souza, D. O., Cunha, R. A., Lara, D. R., and Dall'Igna, O. P. (2003). Neuroprotection by caffeine and adenosine A<sub>2A</sub> receptor blockade of beta-amyloid neurotoxicity. *Br. J. Pharmacol.* 138, 1207–1209. doi: 10.1038/sj.bjp.0705185
- Dansokho, C., Aucouturier, P., and Dorothée, G. (2017). Beneficial effect of interleukin-2-based immunomodulation in Alzheimer-like pathology. *Brain* 140:e39. doi: 10.1093/brain/awx108
- De Strooper, B. (2010). Proteases and proteolysis in Alzheimer disease: a multifactorial view on the disease process. *Physiol. Rev.* 90, 465–494. doi: 10.1152/physrev.00023.2009
- Dennissen, F. J. A., Anglada-Huguet, M., Sydow, A., Mandelkow, E., and Mandelkow, E.-M. (2016). Adenosine A<sub>1</sub> receptor antagonist rollofylline alleviates axonopathy caused by human Tau  $\Delta$ K280. *Proc. Natl. Acad. Sci. U.S.A.* 113, 11597–11602. doi: 10.1073/pnas.1603119113
- Efthymiou, A. G., and Goate, A. M. (2017). Late onset Alzheimer's disease genetics implicates microglial pathways in disease risk. *Mol. Neurodegener.* 12:43. doi: 10.1186/s13024-017-0184-x
- Eskelinen, M. H., Ngandu, T., Tuomilehto, J., Soininen, H., and Kivipelto, M. (2009). Midlife coffee and tea drinking and the risk of late-life dementia: a population-based CAIDE study. *J. Alzheimers Dis.* 16, 85–91. doi: 10.3233/JAD-2009-0920
- Faivre, E., Coehlo, J. E., Zornbach, K., Malik, E., Baqi, Y., Schneider, M., et al. (2018). Beneficial effect of a selective adenosine A<sub>2A</sub> receptor antagonist in the APPsw/PS1de9 mouse model of Alzheimer's Disease. *Front. Mol. Neurosci.* 10:14. doi: 10.3389/fnmol.2018.00235
- Ferreira, J. J., Lees, A., Rocha, J.-F., Poewe, W., Rascol, O., Soares-da-Silva, P., et al. (2016). Opicapone as an adjunct to levodopa in patients with Parkinson's disease and end-of-dose motor fluctuations: a randomised, double-blind, controlled trial. *Lancet Neurol.* 15, 154–165. doi: 10.1016/S1474-4422(15)00336-1
- Ferreira, R. N., de Miranda, A. S., Rocha, N. P., Silva, A. C. S. E., Teixeira, A. L., and da Silva Camargos, E. R. (2018). Neurotrophic factors in Parkinson's disease: What have we learned from pre-clinical and clinical studies? *Curr. Med. Chem.* doi: 10.2174/0929867325666180313101536 [Epub ahead of print].
- Fisone, G., Borgkvist, A., and Usiello, A. (2004). Caffeine as a psychomotor stimulant: mechanism of action. *Cell. Mol. Life Sci.* 61, 857–872. doi: 10.1007/s00018-003-3269-3
- Flaten, V., Laurent, C., Coelho, J. E., Sandau, U., Batalha, V. L., Burnouf, S., et al. (2014). From epidemiology to pathophysiology: what about caffeine in Alzheimer's disease? *Biochem. Soc. Trans.* 42, 587–592. doi: 10.1042/BST20130229
- Fredholm, B. B., Bättig, K., Holmén, J., Nehlig, A., and Zvartau, E. E. (1999). Actions of caffeine in the brain with special reference to factors that contribute to its widespread use. *Pharmacol. Rev.* 51, 83–133.
- Fredholm, B. B., Chen, J.-F., Cunha, R. A., Svenningsson, P., and Vaugeois, J.-M. (2005). Adenosine and brain function. *Int. Rev. Neurobiol.* 63, 191–270. doi: 10.1016/S0074-7742(05)63007-3
- Gelber, R. P., Petrovitch, H., Masaki, K. H., Ross, G. W., and White, L. R. (2011). Coffee intake in midlife and risk of dementia and its neuropathologic correlates. *J. Alzheimers Dis.* 23, 607–615. doi: 10.3233/JAD-2010-101428
- George, J., Gonçalves, F. Q., Cristóvão, G., Rodrigues, L., Meyer Fernandes, J. R., Gonçalves, T., et al. (2015). Different danger signals differently impact on microglial proliferation through alterations of ATP release and extracellular metabolism. *Glia* 63, 1636–1645. doi: 10.1002/glia.22833
- Giménez-Llort, L., Schiffrmann, S. N., Schmidt, T., Canela, L., Camón, L., Wassholm, M., et al. (2007). Working memory deficits in transgenic rats overexpressing human adenosine A<sub>2A</sub> receptors in the brain. *Neurobiol. Learn. Mem.* 87, 42–56. doi: 10.1016/j.nlm.2006.05.004
- Gordon, G. R. J., Choi, H. B., Rungta, R. L., Ellis-Davies, G. C. R., and MacVicar, B. A. (2008). Brain metabolism dictates the polarity of astrocyte control over arterioles. *Nature* 456, 745–749. doi: 10.1038/nature07525
- Haskell, C. F., Kennedy, D. O., Wesnes, K. A., and Scholey, A. B. (2005). Cognitive and mood improvements of caffeine in habitual consumers and habitual non-consumers of caffeine. *Psychopharmacology* 179, 813–825. doi: 10.1007/s00213-004-2104-3
- Hauser, R. A., Olanow, C. W., Kieburtz, K. D., Pourcher, E., Docu-Axelerad, A., Lew, M., et al. (2014). Tozadenant (SYN115) in patients with Parkinson's disease who have motor fluctuations on levodopa: a phase 2b, double-blind, randomised trial. *Lancet Neurol.* 13, 767–776. doi: 10.1016/S1474-4422(14)70148-6
- Horgusluoglu-Moloch, E., Nho, K., Risacher, S. L., Kim, S., Foroud, T., Shaw, L. M., et al. (2017). Targeted neurogenesis pathway-based gene analysis identifies ADORA2A associated with hippocampal volume in mild cognitive impairment and Alzheimer's disease. *Neurobiol. Aging* 60, 92–103. doi: 10.1016/j.neurobiolaging.2017.08.010
- Huang, Z.-L., Zhang, Z., and Qu, W.-M. (2014). Roles of adenosine and its receptors in sleep-wake regulation. *Int. Rev. Neurobiol.* 119, 349–371. doi: 10.1016/B978-0-12-801022-8.00014-3
- Hunsucker, S. A., Spychala, J., and Mitchell, B. S. (2001). Human cytosolic 5'-nucleotidase I: characterization and role in nucleoside analog resistance. *J. Biol. Chem.* 276, 10498–10504. doi: 10.1074/jbc.M011218200
- Ilie, A., Raimondo, J. V., and Akerman, C. J. (2012). Adenosine release during seizures attenuates GABA<sub>A</sub> receptor-mediated depolarization. *J. Neurosci.* 32, 5321–5332. doi: 10.1523/JNEUROSCI.5412-11.2012
- Imura, Y., Morizawa, Y., Komatsu, R., Shibata, K., Shinozaki, Y., Kasai, H., et al. (2013). Microglia release ATP by exocytosis. *Glia* 61, 1320–1330. doi: 10.1002/glia.22517
- Ising, C., and Heneka, M. T. (2018). Functional and structural damage of neurons by innate immune mechanisms during neurodegeneration. *Cell Death Dis.* 9:120. doi: 10.1038/s41419-017-0153-x
- Jerónimo-Santos, A., Batalha, V. L., Müller, C. E., Baqi, Y., Sebastião, A. M., Lopes, L. V., et al. (2014). Impact of in vivo chronic blockade of adenosine A<sub>2A</sub> receptors on the BDNF-mediated facilitation of LTP. *Neuropharmacology* 83, 99–106. doi: 10.1016/j.neuropharm.2014.04.006
- Jung, J., Jo, H. W., Kwon, H., and Jeong, N. Y. (2014). ATP release through lysosomal exocytosis from peripheral nerves: the effect of lysosomal exocytosis on peripheral nerve degeneration and regeneration after nerve injury. *Biomed Res. Int.* 2014:936891. doi: 10.1155/2014/936891
- Jung, J., Shin, Y. H., Konishi, H., Lee, S. J., and Kiyama, H. (2013). Possible ATP release through lysosomal exocytosis from primary sensory neurons. *Biochem. Biophys. Res. Commun.* 430, 488–493. doi: 10.1016/j.bbrc.2012.12.009
- Kachroo, A., and Schwarzschild, M. A. (2012). Adenosine A<sub>2A</sub> receptor gene disruption protects in an  $\alpha$ -synuclein model of Parkinson's disease. *Ann. Neurol.* 71, 278–282. doi: 10.1002/ana.22630
- Kerkhofs, A., Xavier, A. C., da Silva, B. S., Canas, P. M., Idema, S., Baayen, J. C., et al. (2017). Caffeine controls glutamatergic synaptic transmission and pyramidal neuron excitability in human neocortex. *Front. Pharmacol.* 8:899. doi: 10.3389/fphar.2017.00899
- Kim, D.-G., and Bynoe, M. S. (2015). A<sub>2A</sub> adenosine receptor regulates the human blood-brain barrier permeability. *Mol. Neurobiol.* 52, 664–678. doi: 10.1007/s12035-014-8879-2
- King, A. E., Ackley, M. A., Cass, C. E., Young, J. D., and Baldwin, S. A. (2006). Nucleoside transporters: from scavengers to novel therapeutic targets. *Trends Pharmacol. Sci.* 27, 416–425. doi: 10.1016/j.tips.2006.06.004

- Latini, S., and Pedata, F. (2001). Adenosine in the central nervous system: release mechanisms and extracellular concentrations. *J. Neurochem.* 79, 463–484.
- Laurent, C., Buée, L., and Blum, D. (2018). Tau and neuroinflammation: What impact for Alzheimer's disease and tauopathies? *Biomed. J.* 41, 21–33. doi: 10.1016/j.bj.2018.01.003
- Laurent, C., Burnouf, S., Ferry, B., Batalha, V. L., Coelho, J. E., Baqi, Y., et al. (2016). A2A adenosine receptor deletion is protective in a mouse model of Tauopathy. *Mol. Psychiatry* 21, 97–107. doi: 10.1038/mp.2015.115
- Laurent, C., Eddarkaoui, S., Derisbourg, M., Leboucher, A., Demeyer, D., Carrier, S., et al. (2014). Beneficial effects of caffeine in a transgenic model of Alzheimer's disease-like tau pathology. *Neurobiol. Aging* 35, 2079–2090. doi: 10.1016/j.neurobiolaging.2014.03.027
- Lee, C.-C., Chang, C.-P., Lin, C.-J., Lai, H.-L., Kao, Y.-H., Cheng, S.-J., et al. (2018). Adenosine augmentation evoked by an ENT1 inhibitor improves memory impairment and neuronal plasticity in the APP/PS1 mouse model of Alzheimer's disease. *Mol. Neurobiol.* doi: 10.1007/s12035-018-1030-z [Epub ahead of print].
- Leyns, C. E. G., and Holtzman, D. M. (2017). Glial contributions to neurodegeneration in tauopathies. *Mol. Neurodegener.* 12:50. doi: 10.1186/s13024-017-0192-x
- Li, S., Geiger, N. H., Soliman, M. L., Hui, L., Geiger, J. D., and Chen, X. (2015). Caffeine, through adenosine A3 receptor-mediated actions, suppresses amyloid- $\beta$  protein precursor internalization and amyloid- $\beta$  generation. *J. Alzheimers Dis.* 47, 73–83. doi: 10.3233/JAD-142223
- Linden, J., and Cecic, C. (2012). Regulation of lymphocyte function by adenosine. *Arterioscler. Thromb. Vasc. Biol.* 32, 2097–2103. doi: 10.1161/ATVBAHA.111.226837
- Liu, Y., Alahiri, M., Ulloa, B., Xie, B., and Sadiq, S. A. (2018). Adenosine A2A receptor agonist ameliorates EAE and correlates with Th1 cytokine-induced blood brain barrier dysfunction via suppression of MLCK signaling pathway. *Immun. Inflamm. Dis.* 6, 72–80. doi: 10.1002/iid3.187
- Livingston, G., Sommerlad, A., Orgeta, V., Costafreda, S. G., Huntley, J., Ames, D., et al. (2017). Dementia prevention, intervention, and care. *Lancet* 390, 2673–2734. doi: 10.1016/S0140-6736(17)31363-6
- Lopatář, J., Dale, N., and Frenguelli, B. G. (2015). Pannexin-1-mediated ATP release from area CA3 drives mGlu5-dependent neuronal oscillations. *Neuropharmacology* 93, 219–228. doi: 10.1016/j.neuropharm.2015.01.014
- Lorist, M. M., and Tops, M. (2003). Caffeine, fatigue, and cognition. *Brain Cogn.* 53, 82–94.
- Lu, J., Cui, J., Li, X., Wang, X., Zhou, Y., Yang, W., et al. (2016). An anti-Parkinson's disease drug via targeting adenosine A2A receptor enhances amyloid- $\beta$  generation and  $\gamma$ -secretase activity. *PLoS One* 11:e0166415. doi: 10.1371/journal.pone.0166415
- Madeira, M. H., Boia, R., Elvas, F., Martins, T., Cunha, R. A., Ambrósio, A. F., et al. (2016). Selective A2A receptor antagonist prevents microglia-mediated neuroinflammation and protects retinal ganglion cells from high intraocular pressure-induced transient ischemic injury. *Transl. Res.* 169, 112–128. doi: 10.1016/j.trsl.2015.11.005
- Maia, L., and de Mendonça, A. (2002). Does caffeine intake protect from Alzheimer's disease? *Eur. J. Neurol.* 9, 377–382.
- Matos, M., Augusto, E., Agostinho, P., Cunha, R. A., and Chen, J.-F. (2013). Antagonistic interaction between adenosine A2A receptors and Na<sup>+</sup>/K<sup>+</sup>-ATPase- $\alpha$ 2 controlling glutamate uptake in astrocytes. *J. Neurosci.* 33, 18492–18502. doi: 10.1523/JNEUROSCI.1828-13.2013
- Matos, M., Augusto, E., Machado, N. J., dos Santos-Rodrigues, A., Cunha, R. A., and Agostinho, P. (2012a). Astrocytic adenosine A2A receptors control the amyloid- $\beta$  peptide-induced decrease of glutamate uptake. *J. Alzheimers Dis.* 31, 555–567. doi: 10.3233/JAD-2012-120469
- Matos, M., Augusto, E., Santos-Rodrigues, A. D., Schwarzschild, M. A., Chen, J.-F., Cunha, R. A., et al. (2012b). Adenosine A2A receptors modulate glutamate uptake in cultured astrocytes and gliosomes. *Glia* 60, 702–716. doi: 10.1002/glia.22290
- McClure, J. M., O'Leary, D. S., and Scislo, T. J. (2011). Neural and humoral control of regional vascular beds via A1 adenosine receptors located in the nucleus tractus solitarius. *Am. J. Physiol. Regul. Integr. Comp. Physiol.* 300, R744–R755. doi: 10.1152/ajpregu.00565.2010
- Melani, A., Pantoni, L., Corsi, C., Bianchi, L., Monopoli, A., Bertorelli, R., et al. (1999). Striatal outflow of adenosine, excitatory amino acids, gamma-aminobutyric acid, and taurine in awake freely moving rats after middle cerebral artery occlusion: correlations with neurological deficit and histopathological damage. *Stroke* 30, 2448–2454.
- Mukandala, G., Tynan, R., Lanigan, S., and O'Connor, J. J. (2016). The Effects of Hypoxia and Inflammation on Synaptic Signaling in the CNS. *Brain Sci.* 6:E6. doi: 10.3390/brainsci6010006
- Murillo-Rodriguez, E., Blanco-Centurion, C., Sanchez, C., Piomelli, D., and Shiromani, P. J. (2003). Anandamide enhances extracellular levels of adenosine and induces sleep: an in vivo microdialysis study. *Sleep* 26, 943–947.
- Nagpure, B. V., and Bian, J.-S. (2014). Hydrogen sulfide inhibits A2A adenosine receptor agonist induced  $\beta$ -amyloid production in SH-SY5Y neuroblastoma cells via a cAMP dependent pathway. *PLoS One* 9:e88508. doi: 10.1371/journal.pone.0088508
- Nehlig, A. (2018). Interindividual differences in caffeine metabolism and factors driving caffeine consumption. *Pharmacol. Rev.* 70, 384–411. doi: 10.1124/pr.117.014407
- Newell, E. A., Exo, J. L., Verrier, J. D., Jackson, T. C., Gillespie, D. G., Janesko-Feldman, K., et al. (2015). 2',3'-cAMP, 3'-AMP, 2'-AMP and adenosine inhibit TNF- $\alpha$  and CXCL10 production from activated primary murine microglia via A2A receptors. *Brain Res.* 1594, 27–35. doi: 10.1016/j.brainres.2014.10.059
- Oertel, W., and Schulz, J. B. (2016). Current and experimental treatments of Parkinson disease: a guide for neuroscientists. *J. Neurochem.* 139(Suppl. 1), 325–337. doi: 10.1111/jnc.13750
- Orellana, J. A. (2016). Physiological functions of glial cell hemichannels. *Adv. Exp. Med. Biol.* 949, 93–108. doi: 10.1007/978-3-319-40764-7\_5
- Orellana, J. A., Moraga-Amaro, R., Diaz-Galarce, R., Rojas, S., Maturana, C. J., Stehberg, J., et al. (2015). Restraint stress increases hemichannel activity in hippocampal glial cells and neurons. *Front. Cell. Neurosci.* 9:102. doi: 10.3389/fncel.2015.00102
- Orr, A. G., Hsiao, E. C., Wang, M. M., Ho, K., Kim, D. H., Wang, X., et al. (2015). Astrocytic adenosine receptor A2A and Gs-coupled signaling regulate memory. *Nat. Neurosci.* 18, 423–434. doi: 10.1038/nn.3930
- Orr, A. G., Lo, I., Schumacher, H., Ho, K., Gill, M., Guo, W., et al. (2018). Istradefylline reduces memory deficits in aging mice with amyloid pathology. *Neurobiol. Dis.* 110, 29–36. doi: 10.1016/j.nbd.2017.10.014
- Pagnussat, N., Almeida, A. S., Marques, D. M., Nunes, F., Chenet, G. C., Botton, P. H. S., et al. (2015). Adenosine A(2A) receptors are necessary and sufficient to trigger memory impairment in adult mice. *Br. J. Pharmacol.* 172, 3831–3845. doi: 10.1111/bph.13180
- Parkinson, F. E., Damaraju, V. L., Graham, K., Yao, S. Y. M., Baldwin, S. A., Cass, C. E., et al. (2011). Molecular biology of nucleoside transporters and their distributions and functions in the brain. *Curr. Top. Med. Chem.* 11, 948–972.
- Pereira, G. S., Rossato, J. I., Sarkis, J. J. F., Cammarota, M., Bonan, C. D., and Izquierdo, I. (2005). Activation of adenosine receptors in the posterior cingulate cortex impairs memory retrieval in the rat. *Neurobiol. Learn. Mem.* 83, 217–223. doi: 10.1016/j.nlm.2004.12.002
- Porkka-Heiskanen, T., and Kalinchuk, A. V. (2011). Adenosine, energy metabolism and sleep homeostasis. *Sleep Med. Rev.* 15, 123–135. doi: 10.1016/j.smrv.2010.06.005
- Porkka-Heiskanen, T., Strecker, R. E., Thakkar, M., Bjorkum, A. A., Greene, R. W., and McCarley, R. W. (1997). Adenosine: a mediator of the sleep-inducing effects of prolonged wakefulness. *Science* 276, 1265–1268.
- Prasanthi, J. R. P., Dasari, B., Marwarha, G., Larson, T., Chen, X., Geiger, J. D., et al. (2010). Caffeine protects against oxidative stress and Alzheimer's disease-like pathology in rabbit hippocampus induced by cholesterol-enriched diet. *Free Radic. Biol. Med.* 49, 1212–1220. doi: 10.1016/j.freeradbiomed.2010.07.007
- Qazi, T. J., Quan, Z., Mir, A., and Qing, H. (2018). Epigenetics in Alzheimer's disease: perspective of DNA methylation. *Mol. Neurobiol.* 55, 1026–1044. doi: 10.1007/s12035-016-0357-6
- Rebola, N., Lujan, R., Cunha, R. A., and Mulle, C. (2008). Adenosine A2A receptors are essential for long-term potentiation of NMDA-EPSCs at hippocampal mossy fiber synapses. *Neuron* 57, 121–134. doi: 10.1016/j.neuron.2007.11.023
- Reitz, C., Brayne, C., and Mayeux, R. (2011). Epidemiology of Alzheimer disease. *Nat. Rev. Neurol.* 7, 137–152. doi: 10.1038/nrneuro.2011.2
- Ritchie, K., Carrière, I., de Mendonca, A., Portet, F., Dartigues, J. F., Rouaud, O., et al. (2007). The neuroprotective effects of caffeine: a prospective population



- study (the Three City Study). *Neurology* 69, 536–545. doi: 10.1212/01.wnl.0000266670.35219.0c
- Rosenberg, P. A., and Li, Y. (1995). Adenylyl cyclase activation underlies intracellular cyclic AMP accumulation, cyclic AMP transport, and extracellular adenosine accumulation evoked by beta-adrenergic receptor stimulation in mixed cultures of neurons and astrocytes derived from rat cerebral cortex. *Brain Res.* 692, 227–232.
- Sanchez-Mut, J. V., Aso, E., Panayotis, N., Lott, I., Dierssen, M., Rabano, A., et al. (2013). DNA methylation map of mouse and human brain identifies target genes in Alzheimer's disease. *Brain* 136, 3018–3027. doi: 10.1093/brain/awt237
- Santos, C., Costa, J., Santos, J., Vaz-Carneiro, A., and Lunet, N. (2010). Caffeine intake and dementia: systematic review and meta-analysis. *J. Alzheimers Dis.* 20(Suppl. 1), S187–S204. doi: 10.3233/JAD-2010-091387
- Sawyer, D. A., Julia, H. L., and Turin, A. C. (1982). Caffeine and human behavior: arousal, anxiety, and performance effects. *J. Behav. Med.* 5, 415–439.
- Scheltens, P., Blennow, K., Breteler, M. M. B., de Strooper, B., Frisoni, G. B., Salloway, S., et al. (2016). Alzheimer's disease. *Lancet* 388, 505–517. doi: 10.1016/S0140-6736(15)01124-1
- Sharma, B., and Paul, S. (2016). Action of caffeine as an amyloid inhibitor in the aggregation of A $\beta$ 16–22 peptides. *J. Phys. Chem. B* 120, 9019–9033. doi: 10.1021/acs.jpcc.6b03892
- Silva, A. C., Lemos, C., Goncalves, F. Q., Pliassova, A. V., Machado, N. J., Silva, H. B., et al. (2018). Blockade of adenosine A2A receptors recovers early deficits of memory and plasticity in the triple transgenic mouse model of Alzheimer's disease. *Neurobiol. Dis.* 350, 99–108. doi: 10.1016/j.nbd.2018.05.024
- Smit, H. J., and Rogers, P. J. (2000). Effects of low doses of caffeine on cognitive performance, mood and thirst in low and higher caffeine consumers. *Psychopharmacology* 152, 167–173.
- Temido-Ferreira, M., Ferreira, D. G., Batalha, V. L., Marques-Morgado, I., Coelho, J. E., Pereira, P., et al. (2018). Age-related shift in LTD is dependent on neuronal adenosine A2A receptors interplay with mGluR5 and NMDA receptors. *Mol. Psychiatry* doi: 10.1038/s41380-018-0110-9 [Epub ahead of print].
- Travassos, M., Santana, I., Baldeiras, I., Tsolaki, M., Gkatzima, O., Sermin, G., et al. (2015). Does caffeine consumption modify cerebrospinal fluid amyloid- $\beta$  levels in patients with Alzheimer's disease? *J. Alzheimers Dis.* 47, 1069–1078. doi: 10.3233/JAD-150374
- Viana da Silva, S., Haberl, M. G., Zhang, P., Bethge, P., Lemos, C., Gonçalves, N., et al. (2016). Early synaptic deficits in the APP/PS1 mouse model of Alzheimer's disease involve neuronal adenosine A2A receptors. *Nat. Commun.* 7:11915. doi: 10.1038/ncomms11915
- Williams-Karnesky, R. L., Sandau, U. S., Lusardi, T. A., Lytle, N. K., Farrell, J. M., Pritchard, E. M., et al. (2013). Epigenetic changes induced by adenosine augmentation therapy prevent epileptogenesis. *J. Clin. Invest.* 123, 3552–3563. doi: 10.1172/JCI65636
- Wostyn, P., Van Dam, D., Audenaert, K., and De Deyn, P. P. (2011). Increased cerebrospinal fluid production as a possible mechanism underlying caffeine's protective effect against Alzheimer's disease. *Int. J. Alzheimers Dis.* 2011:617420. doi: 10.4061/2011/617420
- Zimmermann, H. (1994). Signalling via ATP in the nervous system. *Trends Neurosci.* 17, 420–426.
- Zimmermann, H. (2000). Extracellular metabolism of ATP and other nucleotides. *Naunyn Schmiedebergs Arch. Pharmacol.* 362, 299–309.
- Zimmermann, H. (2006). Nucleotide signaling in nervous system development. *Pflugers Arch.* 452, 573–588. doi: 10.1007/s00424-006-0067-4
- Zimmermann, H., Zebisch, M., and Sträter, N. (2012). Cellular function and molecular structure of ecto-nucleotidases. *Purinergic Signal.* 8, 437–502. doi: 10.1007/s11302-012-9309-4
- zur Nedden, S., Doney, A. S., and Frenguelli, B. G. (2014). Modulation of intracellular ATP determines adenosine release and functional outcome in response to metabolic stress in rat hippocampal slices and cerebellar granule cells. *J. Neurochem.* 128, 111–124. doi: 10.1111/jnc.12397

**Conflict of Interest Statement:** The authors declare that the research was conducted in the absence of any commercial or financial relationships that could be construed as a potential conflict of interest.

Copyright © 2018 Cellai, Carvalho, Faivre, Deleau, Vieau, Buée, Blum, Mériaux and Gomez-Murcia. This is an open-access article distributed under the terms of the Creative Commons Attribution License (CC BY). The use, distribution or reproduction in other forums is permitted, provided the original author(s) and the copyright owner(s) are credited and that the original publication in this journal is cited, in accordance with accepted academic practice. No use, distribution or reproduction is permitted which does not comply with these terms.