



Anterior Temporal Lobe Morphometry Predicts Categorization Ability

Béatrice Garcin^{1,2*}, Marika Urbanski^{1,3,4}, Michel Thiebaut de Schotten^{1,4,5}, Richard Levy^{1,2} and Emmanuelle Volle^{1,4}

¹ Frontlab, Institut du Cerveau et de la Moelle épinière (ICM), UPMC UMRS 1127, Inserm U 1127, CNRS UMR 7225, Paris, France, ² Department of Neurology, Salpêtrière Hospital AP-HP, Paris, France, ³ Service de Médecine et Réadaptation, Hôpitaux de Saint-Maurice, Saint-Maurice, France, ⁴ Brain Connectivity and Behaviour Group, Institut du Cerveau et de la Moelle Epinière, Paris, France, ⁵ Centre de Neuroimagerie de Recherche, Institut du Cerveau et de la Moelle Epinière, Paris, France

Categorization is the mental operation by which the brain classifies objects and events. It is classically assessed using semantic and non-semantic matching or sorting tasks. These tasks show a high variability in performance across healthy controls and the cerebral bases supporting this variability remain unknown. In this study we performed a voxel-based morphometry study to explore the relationships between semantic and shape categorization tasks and brain morphometric differences in 50 controls. We found significant correlation between categorization performance and the volume of the gray matter in the right anterior middle and inferior temporal gyri. Semantic categorization tasks were associated with more rostral temporal regions than shape categorization tasks. A significant relationship was also shown between white matter volume in the right temporal lobe and performance in the semantic tasks. Tractography revealed that this white matter region involved several projection and association fibers, including the arcuate fasciculus, inferior fronto-occipital fasciculus, uncinate fasciculus, and inferior longitudinal fasciculus. These results suggest that categorization abilities are supported by the anterior portion of the right temporal lobe and its interaction with other areas.

Keywords: categorization, semantic, interindividual variability, structural anatomy, voxel-based morphometry

Highlights:

- Anterior temporal lobe morphometry correlates with categorization performances
- Semantic is associated with a more rostral temporal region than shape categorization
- Semantic categorization performances are associated with right temporal connections.

INTRODUCTION

Categorization is the mental operation by which the brain classifies objects and events. The ability to categorize information has an impact in virtually all domains of cognition and behavior, from learning (children learn new concepts by categorizing items that look similar or have similar properties) to survival (to recognize an animal as dangerous, primates need to categorize it as similar to a previously encountered dangerous animal).

OPEN ACCESS

Edited by:

Carol Seger,
Colorado State University,
United States

Reviewed by:

Guido Gainotti,
Fondazione Policlinico Universitario A.
Gemelli, Università Cattolica del Sacro
Cuore, Italy
Xiong Jiang,
Georgetown University, United States

*Correspondence:

Béatrice Garcin
beatrice.garcin@aphp.fr;
beagarcin@msn.com

Received: 08 November 2017

Accepted: 23 January 2018

Published: 07 February 2018

Citation:

Garcin B, Urbanski M, Thiebaut de Schotten M, Levy R and Volle E (2018) Anterior Temporal Lobe Morphometry Predicts Categorization Ability. *Front. Hum. Neurosci.* 12:36. doi: 10.3389/fnhum.2018.00036

The evaluation of categorization abilities relies on various tests, including semantic and visual categorization tests. Semantic categorization abilities are usually assessed by matching tests based on taxonomic or thematic categorization, such as the Pyramid and Palm Tree Test (PPT test) (Howard and Patterson, 1992), and by the production of the relevant abstract category as in the similarities subtest of the Wechsler Intelligence Adult Scale (WAIS) (Wechsler, 2008). Categorization abilities can also be assessed by sorting tests such as the Delis–Kaplan Executive Function (D-KEFS) sorting test (Delis et al., 2001) and the Wisconsin Card Sorting Test (WCST) (Milner, 1963), that use semantic and/or visuo-perceptual material. All of these tests but the WAIS are designed to screen and detect deficits in patients. However, normative studies focused on these tests show inter-individual variability in healthy subjects' performances with a relative standard deviation (i.e., $rSD = \text{standard deviation}/\text{mean}$) of 4–12% in the PPT test (Howard and Patterson, 1992; Rami et al., 2008; Klein and Buchanan, 2009; Gamboz et al., 2009; Callahan et al., 2010), an rSD of 25–45% in the similarities subtest of the WAIS (Wechsler, 2008; Wisdom et al., 2012; Harrison et al., 2014), an rSD of 20–40% in the D-KEFS sorting test (Delis et al., 2001; Homack et al., 2005; Mattioli et al., 2014), and an rSD of 20%–60% in the number of categories found in the WCST (Caffarra et al., 2004; Shan et al., 2008; Arango-Lasprilla et al., 2015). Whether this inter-individual variability in categorization tasks is related to variability in brain structure remains unknown.

Functional neuroimaging studies in healthy subjects, as well as electrophysiological studies in primates, have shown the involvement of various brain regions in categorization tasks. For instance, the ventrolateral prefrontal cortex (PFC) (Grossman et al., 2002; Vogels et al., 2002; Koenig et al., 2005; Milton et al., 2009), the lateral and/or inferior temporal cortices (Gerlach et al., 2000; Sigala and Logothetis, 2002; Pernet et al., 2005), or both frontal and temporal cortices (Tyler et al., 2001; Adams and Janata, 2002; Devlin et al., 2002; Pilgrim et al., 2002; Reber et al., 2002; Pernet et al., 2004; Sass et al., 2009; Visser et al., 2012) are involved during semantic and visuo-perceptual categorization tasks. Some authors used distinct task instructions to explore executive control processes separately from bottom-up access to visuo-perceptual and semantic representations (Koenig et al., 2005; Milton et al., 2009; Garcin et al., 2012). For instance, Garcin et al. (2012) used matching and non-matching sorting tasks and showed that BOLD signal was higher in the ventrolateral PFC for the matching than the non-matching tasks suggesting that matching involves more control processes than non-matching. All these studies examined the regions activated during categorization, without assessing the relationship between brain structural variability and categorization abilities.

Regarding brain structure, the exact shape of every human brain is unique, resulting in inter-individual anatomical variability (Mazziotta et al., 1995; Uylings et al., 2005; Fischl et al., 2008), but whether inter-individual variability can affect or predict individual categorization performance is unknown. We hypothesized that structural variations in the regions classically observed in functional imaging (the lateral prefrontal cortex and the lateral and inferior temporal cortices) may be related to

subjects' performance in categorization. To address this question, we performed a voxel-based morphometry (VBM) study in healthy subjects using a sorting test adapted from the PPT test (Howard and Patterson, 1992) that allowed us to assess separately semantic and visuo-perceptual categorization in matching and non-matching conditions.

MATERIALS AND METHODS

Participants

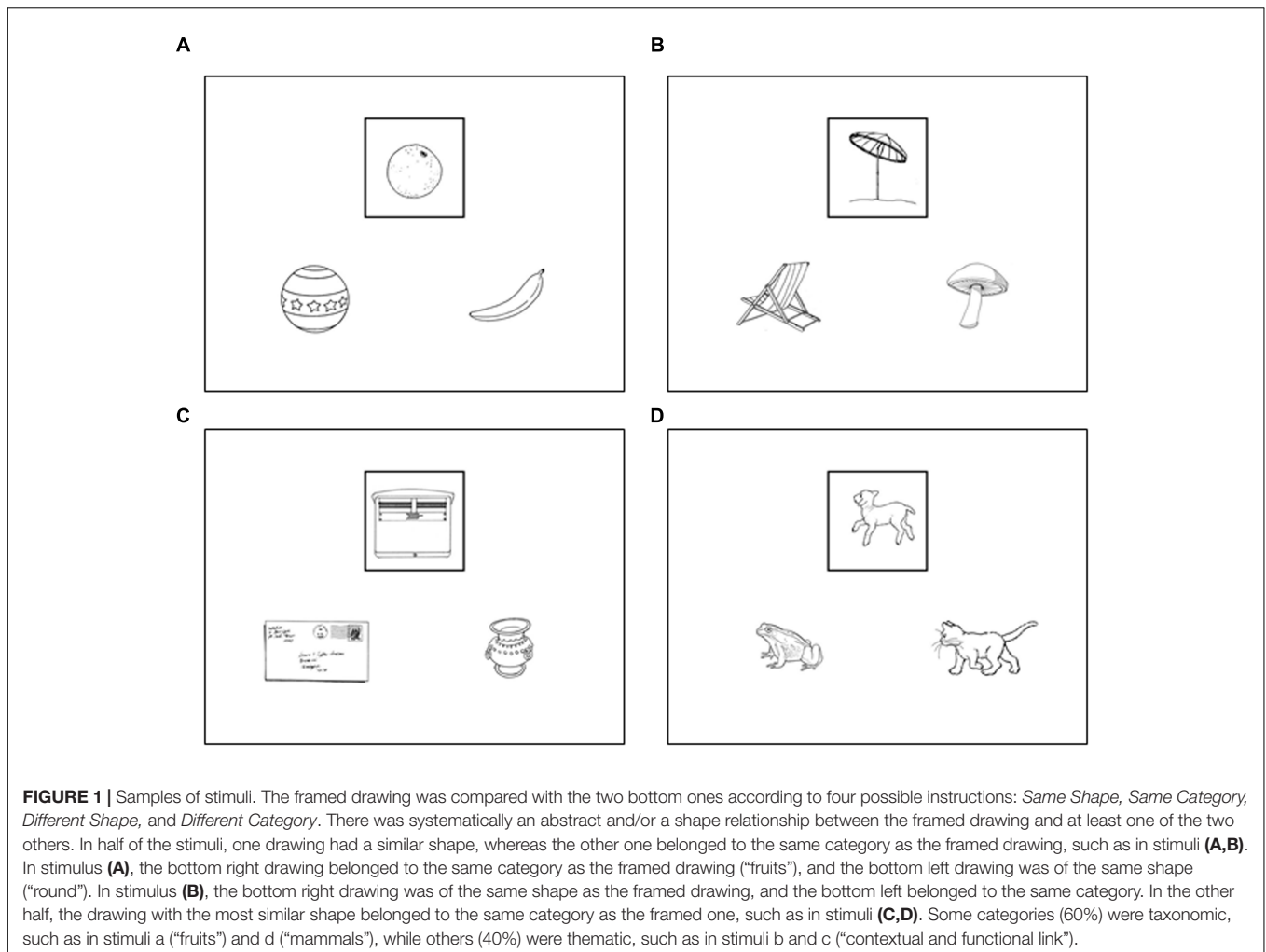
Fifty right-handed native French speakers (25 females; age 22–71 years, mean = 47 ± 14.3 years) participated in the study. A large age range was chosen to represent the diversity of the general population. All participants were healthy adults with no history of neurological or psychiatric disorders and no abnormalities were revealed on their structural MRI. Participants had an average of 15.4 ± 3.0 years of education (range, 10–26). They had no cognitive impairment as assessed with the Mini Mental State Examination (Folstein et al., 1975) and the Frontal Assessment Battery (Dubois et al., 2000). They all underwent a French verbal semantic matching test adapted from the word-written version of the PPT test (Merck et al., 2011) and showed no impairment. The experiment was approved by the local ethics committee (CPP-Ile de France-6). All participants provided written informed consent and were paid for their participation.

Experimental Stimuli, Tasks, and Procedure

We used a short version of the categorization paradigm described in a previous functional imaging study (Garcin et al., 2012). The principle of this task is similar to that of the PPT test, a semantic matching task designed to search for semantic deficits in patients. Compared to the PPT, the categorization paradigm was designed to assess both semantic and visuo-perceptual categorization, with two distinct sorting conditions: matching and non-matching conditions. The paradigm used a factorial design with two dimensions (i.e., *Shape and Category*) assessing semantic (*Category*) and visuo-perceptual (*Shape*) categorization, and two conditions (i.e., *Same and Different*) assessing matching (*Same*) and non-matching (*Different*) sorting.

Stimuli

Stimuli consisted of triads of black-and-white drawings of real-life objects that were displayed on a computer screen. One drawing at the top of the screen was framed; the two other drawings were located at the bottom left and right sides of the screen (**Figure 1**). For each trial, there was a semantic link between the framed drawing and one of the two bottom ones, as well as a similarity of shape between the framed drawing and one of the two bottom ones (for more information, see the legend of **Figure 1**). Of the 576 stimuli used in our previous fMRI study (Garcin et al., 2012), 160 stimuli were selected to create a shorter version of the paradigm. Stimuli belonged to 107 different categories, among which 60% were taxonomic (e.g., fruits or insects, $n = 64$), and 40% were thematic (e.g., rugby



or transportation, $n = 43$). Among all drawings, 60% were non-living objects and 40% were living objects. Some objects were easy to handle (e.g., tools, fruit), and others were not (e.g., buildings, wild animals). See Supplementary Material 1.

Experimental Task

The 160 stimuli were divided into four sets of 40 stimuli each. Each set was assigned to one of the four following tasks: the *same shape* task, *same category* task, *different shape* task, and *different category* task. In the *same shape* task, participants had to choose the drawing that had the most similar shape to that of the framed drawing. In the *same category* task, participants had to choose the drawing that belonged to the same category as the framed drawing. In the *different shape* task, participants were asked to choose the drawing that had the most different shape from that of the framed drawing. In the *different category* task, participants had to choose the drawing that did not belong to the same category as the framed drawing. Correct items were equally distributed between the bottom-left and bottom-right drawings for each task. In each task, one bottom drawing had both the same shape and the same category as the framed drawing in half of the trials, whereas one bottom drawing had a similar

shape and the other one belonged to the same category in the other half of the trials. This step ensured that shape had no effect on category decision and vice versa. The number of categories and their nature (taxonomic/thematic, living/non-living) were equally distributed in the four tasks.

Experimental Procedure

Stimulus presentation was programmed on a PC using meyeParadigm 1.17 software¹. The order of the tasks and the order of trials within each task were randomized between subjects, and each task was performed in a block of 40 trials. Training was performed before the beginning of the test. The instruction was given orally before each block, and it was reminded on the screen during 5 s at the beginning of each block. Participants had a maximum time of 10 s to answer to each stimulus, and a reminder of the instruction appeared during 1.5 s between each trial. Subjects had to press the E key to choose the left drawing and O key for the right drawing. Participants were asked to answer as fast and as accurate as possible. The total duration of the procedure was between

¹www.eye-brain.com

20 and 25 min. A quick debriefing was performed after each block.

Behavioral Analysis

Accuracy and response times (RTs) were measured and statistical analyses were conducted using SPSS software². Repeated measures two-way ANOVA analyses were performed to compare participants' performance (accuracy and RTs for correct responses only) according to two factors: dimension (*Category/Shape*) and condition (*Same/Different*). We also ran Pearson correlation analyses between age and experimental scores, as well as between education and experimental scores. We compared the performance of men and women using an independent samples *t*-test.

VBM Study: Image Acquisition and Analysis

Structural T1-Weighted Images

All participants underwent the same high-resolution T1-weighted structural MRI scans acquired on a Siemens 3 Tesla VERIO TIM system equipped with a 32-channel head coil. An axial 3D MPRAGE dataset covering the whole head was acquired for each participant as follows: 176 slices, voxel resolution = 1 mm × 1 mm × 1 mm, TE = 2.98 ms, TR = 2300 ms, flip angle = 9°.

VBM Pre-processing

3D T1-weighted sequences were processed and analyzed with SPM8 (Wellcome Department of Imaging Neuroscience, London, United Kingdom) running on Matlab (Mathworks Inc., United States).³ We used the VBM8 toolbox⁴ to perform MRI data pre-processing⁵. First, we spatially normalized the T1 images to the MNI152 Dartel template using high-dimensional Dartel normalization (Ashburner, 2007). SPM8's new version of the unified segmentation method (new segment) (Ashburner and Friston, 2005) was used to segment T1 images into gray matter (GM), white matter (WM), and cerebrospinal fluid. Default estimation parameters were used to compute normalized images with an isotropic voxel size of 1.5 mm³. Normalized images were modulated to compensate for regional volume changes caused by normalization. The "normalized non-linear modulation only" option was used, allowing us to analyze relative differences in regional GM volume corrected for individual brain size. The quality was evaluated by displaying one slice for each image module and searching for visual abnormalities and by checking sample homogeneity using the covariance between individual images. The images with low covariance (−2 standard deviations, $n = 4$) were visually examined, and none of them had to be excluded. In addition, all normalized 3D images were visually inspected and compared with the template using frontal anatomical landmarks by an expert neurologist (B.G.). Modulated and normalized GM images were then smoothed

using a Gaussian kernel of 8 mm³ full width at half maximum to enable interindividual comparisons and parametric statistics. The resulting GM images were used for statistical analyses.

VBM Whole-Brain Statistical Analysis

To investigate the relationship between VBM regional gray matter (GM) structural variability and different aspects of categorization, we ran multiple regression analyses in SPM8 between GM volume and behavioral scores. RTs for accurate responses were used for the analyses because of a ceiling effect in accuracy. First, the averaged scores in the Category dimension (*same category* and *different category* tasks) and the averaged scores in the Shape dimension (*same shape* and *different shape* tasks) were entered separately as covariates in two separate regression models. In a second step, the averaged scores in the Same conditions (*same category* and *same shape* tasks) and the averaged scores in the Different conditions (*different category* and *different shape* tasks) were entered separately as covariates in separate regression models. Age, gender, and education were co-varied out in all the regression models. Data were also normalized and corrected for individual total GM volume by entering their global values as covariates in the linear model. Global values of total GM volume were extracted and calculated from the `get_totals` scripts.⁶ For each regression analysis, we investigated significant results at $p < 0.05$ using a familywise error (FWE) correction at the cluster level with a voxel-level threshold of $p < 0.001$ uncorrected. Non-stationary smoothness of the data was taken into account for cluster-level threshold. Results at $p < 0.001$ uncorrected for multiple comparisons at the voxel level, with a minimal cluster size of 100 voxels, are reported in the Supplementary Results for information purposes.

To investigate the relationship between VBM regional white matter (WM) density and different aspects of categorization, we ran multiple regression analyses in SPM8 between WM volume and behavioral scores. We used the same models and covariates as for the GM VBM analyses. Data were also normalized and corrected for individual total WM volume by entering their values as covariates in the linear model. For each regression analysis, we investigated significant results at $p < 0.05$ using FWE correction at the cluster level with a voxel-level threshold of $p < 0.001$ uncorrected. Non-stationary smoothness of the data was taken into account for cluster-level threshold. Results at $p < 0.001$ uncorrected for multiple comparisons at the voxel level, with a minimal cluster size of 100 voxels are reported in the Supplementary Results.

Connectivity Study: Image Acquisition, Preprocessing, and Analysis

The functions of brain regions depend on their connectivity with other brain regions. Therefore, anatomical connectivity of the VBM results was investigated in a connectivity study using diffusion images. We explored the connections terminating in and emerging from the brain regions identified in the WM VBM in 44 out of the 50 participants (22 females; age 22–71 years, mean = 46.5 ± 14.5 years).

²<http://www-01.ibm.com/software/analytics/spss/>

³www.mathworks.com/matlabcentral

⁴<http://dbm.neuro.uni-jena.de/vbm/>

⁵<http://dbm.neuro.uni-jena.de/vbm8/VBM8-Manual.pdf>

⁶http://www0.cs.ucl.ac.uk/staff/g.ridgway/vbm/get_totals.m

Diffusion Image Acquisition

A total of 70 near-axial slices were acquired during the same MRI session as T1 images. We used an acquisition sequence fully optimized for tractography of DWI that provided isotropic (2 mm × 2 mm × 2 mm) resolution and coverage of the whole head. The acquisition was peripherally gated to the cardiac cycle with an echo time (TE) of 85 ms. We used a repetition time (TR) equivalent to 24 RR. At each slice location, six images were acquired with no diffusion gradient applied. Sixty diffusion-weighted images were acquired in which gradient directions were uniformly distributed in space. Diffusion weighting was equal to a *b*-value of 1500 s/mm².

Diffusion Imaging Pre-processing

One supplementary image with no diffusion gradient applied but with reversed phase-encode blips was collected. This step provided us with a pair of images with no diffusion gradient applied and distortions going in opposite directions. From these pairs, the susceptibility-induced off-resonance field was estimated using a method similar to that described in Andersson et al. (2003) and corrected on the whole diffusion-weighted dataset using the tool TOPUP as implemented in FSL (Smith et al., 2004). Finally, at each slice, diffusion-weighted data were simultaneously registered and corrected for subject motion and geometrical distortion, adjusting the gradient accordingly (ExploreDTI)⁷ (Leemans and Jones, 2009).

Spherical Deconvolution Tractography Reconstruction

Spherical deconvolution was chosen to estimate multiple orientations in voxels containing different populations of crossing fibers (Tournier et al., 2004; Anderson, 2005). The damped version of the Richardson–Lucy algorithm for spherical deconvolution (Dell’acqua et al., 2010) was calculated using an in-house developed software. Algorithm parameters were chosen as previously described (Dell’acqua et al., 2012).

Whole-brain tractography was performed by selecting every brain voxel with at least one fiber orientation as a seed voxel. From these voxels and for each fiber, orientation streamlines were propagated using Euler integration with a step size of 1 mm. When entering a region with crossing WM bundles, the algorithm followed the orientation vector of the least curvature (Schmahmann et al., 2007). Streamlines were halted when a voxel without fiber orientation was reached or when the curvature between two steps exceeded a threshold of 60°. Spherical deconvolution, fiber orientation vector estimation, and tractography were performed using in-house software developed with Matlab 7.8.⁸

Tractography Dissections

The significant results of WM VBM analysis were used as regions of interest (ROIs) for tract dissections. We dissected the tracts connecting the observed ROIs associated with *Category* (i.e., *same category* + *different category*) performances.

⁷<http://www.exploredti.com>

⁸<http://www.mathworks.com>

In short, each participant’s convergence speed maps (Dell’acqua et al., 2012) were registered to the MNI152 template using Advanced Normalization Tools (Klein et al., 2009). Inverse deformation was then applied to the ROIs to bring them within the native space of each participant. Binary individual visitation maps were created for the connections emerging from or terminating in the observed ROI by assigning each voxel a value of 1 or 0, depending on whether the voxel was intersected by the streamlines of the tract. Binary visitation maps of each of the dissected tracts were normalized to the MNI space using the same affine and diffeomorphic deformations as calculated above. We created percentage overlap maps by adding the normalized visitation maps from each subject at each point in the MNI space. Therefore, the overlap of the visitation maps varies according to inter-subject variability. We inspected tracts reproducible in more than 50% of the participants using a method described previously in Thiebaut de Schotten et al. (2011). Tracts resulting from this analysis were visually inspected and identified using an atlas of human brain connections (Thiebaut de Schotten et al., 2011; Rojkova et al., 2015).

RESULTS

Behavioral Results

Accuracy (Figure 2A)

The mean error rate was low (mean: 3.2%, all conditions included). Repeated measures two-way ANOVAs revealed no effect of dimension [i.e., *Category* vs. *Shape*; $F(1,49) = 0.98$, $p = 0.32$] or condition [i.e., *Same* vs. *Different*; $F(1,49) = 0.47$, $p = 0.49$].

Response Times (Figure 2B)

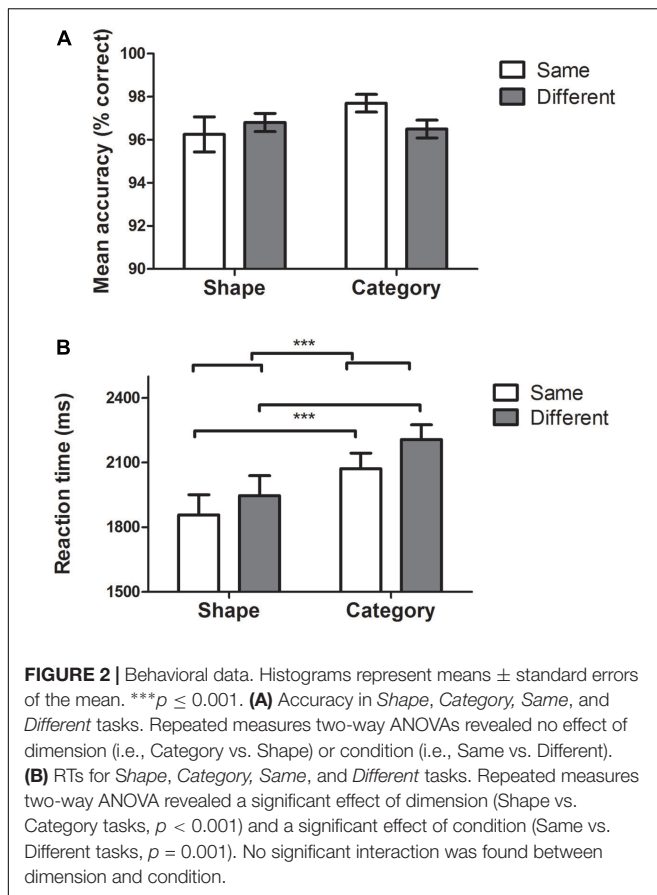
Repeated measures two-way ANOVA revealed a significant effect of dimension [$F(1,49) = 18.7$, $p < 0.001$, *Shape* mean = 1902 ms, *Category* mean = 2140 ms] and a significant effect of condition [$F(1,49) = 12.7$, $p = 0.001$, *Same* mean = 1965 ms, *Different* mean = 2077 ms]. No significant interaction was found between dimension and condition [$F(1,49) = 0.39$, $p = 0.53$].

Correlations: Age, Gender, and Education

Age was significantly positively correlated with RT in all conditions: *same shape* ($r = 0.50$, $p < 0.001$), *different shape* ($r = 0.55$, $p < 0.001$), *same category* ($r = 0.47$, $p = 0.001$), and *different category* ($r = 0.47$, $p = 0.001$). There was no significant gender difference for each task. Education was not correlated with RT in any tasks or with average RT of all tasks pooled together.

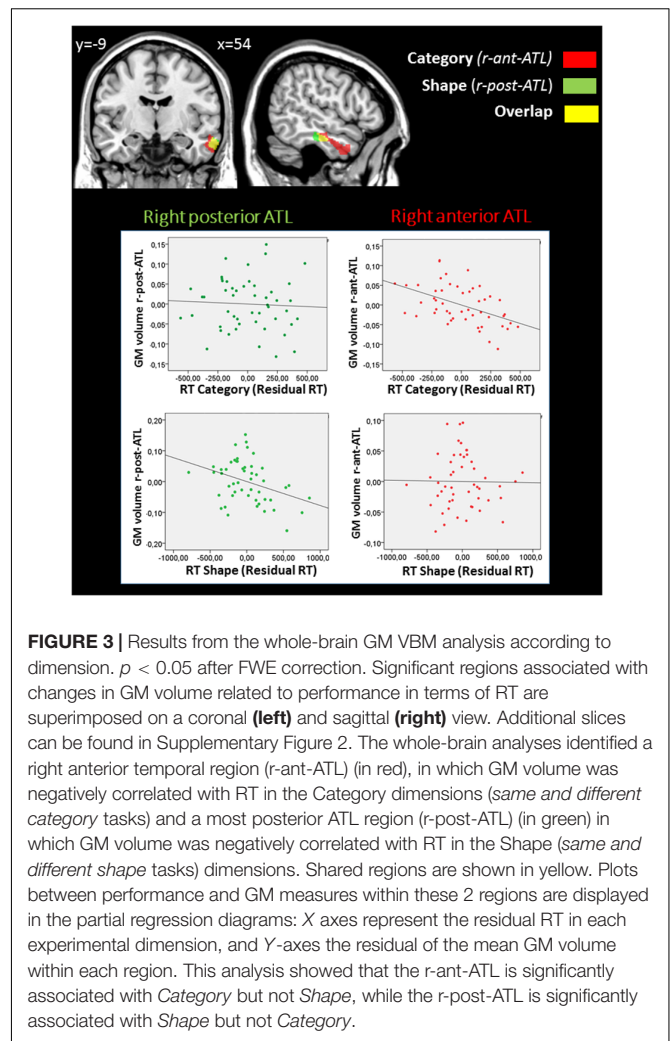
GM Correlations with RT in the Shape and Category Dimensions (Table 1, Figure 3, and Supplementary Figure 2)

Voxel-wise multiple regression analyses of RTs for each task dimension (*Shape* and *Category*) were conducted within GM with age, gender, and education as covariates of non-interest. Correlation between VBM regional gray matter (GM) structural variability and age are proposed in Supplementary Results.



At an FWE-corrected threshold, RTs in the *Shape* and *Category* dimensions were both negatively correlated with GM volume in the right temporal lobe, i.e., less GM volume was related to slower RTs. RTs in the *Category* dimension were correlated with the right temporal pole, middle temporal gyrus, and inferior temporal gyrus (BA 20/21/38). RTs in the *Shape* dimension were correlated with the right middle temporal and inferior temporal gyri (BA 20/21). As **Figure 3** shows, RTs in the *Category* dimension were correlated with a region in the ATL that was more rostral than the region correlated with RTs in the *Shape* dimension. No significant positive correlation was observed. At $p < 0.001$ uncorrected threshold, additional clusters were identified that are described in the Supplementary Results.

To illustrate this finding, we examined the functional profile of *Shape*-related (the right posterior ATL region; r-post-ATL, in green on **Figure 3**) and *Category*-related (the right anterior ATL region; r-ant-ATL, in red on **Figure 3**) regions. GM measures were extracted from each individual pre-processed structural images using FSL software, and averaged across voxels within each of these 2 clusters, excluding the region of overlap between the two clusters. We ran multiple regressions between each region (r-ant-ATL and r-post-ATL) and *Category* and *Shape* RTs. GM volume in each region was entered as the dependent variable in regression models, and performance in both *Shape* and *Category* tasks were entered as independent variables, together with age, gender, education and total GM volume. R-ant-ATL volume



($F(6,43) = 8.1$; $p < 0.001$) was significantly predicted by *Category* RT ($\beta: -0.673$, $p = 0.001$) but not by *Shape* RT ($\beta: -0.020$; $p = 0.927$), nor by age, gender, education or total GM volume. R-post-ATL volume ($F(6,43) = 4.813$; $p = 0.001$) was predicted by *Shape* RT ($\beta: -0.598$; $p = 0.016$) but not by *Category* RT ($\beta: -0.072$; $p = 0.740$), nor by age, gender, education, or total GM volume. The plots are provided in **Figure 3**.

GM Correlations with RTs in the Same and Different Conditions (Table 1 and Supplementary Figure 3)

At an FWE-corrected threshold, RTs in the *Same* condition were negatively correlated with GM volume in the right temporal pole, middle temporal gyrus, and inferior temporal gyrus, whereas RTs in the *Different* condition were negatively correlated with the right middle and inferior temporal gyri, i.e., less GM volume was related to slower RTs. There was a large overlap of both clusters (*Same and Different*) in the temporal lobe (Supplementary Figure 3). No positive correlation was found with RTs in the *Same* and *Different* conditions.

TABLE 1 | Gray matter VBM–whole brain analysis: negative GM correlations with RT in Shape, Category, Same, and Different tasks at $p < 0.05$ after FWE correction at the cluster level.

	Brain region	Side	BA	MNI coordinate (maxima)	T-value	Cluster size	Cluster-level P(FWE)
Shape	Middle and inferior temporal gyrus	R	20/21	56 -19 -20	4.74	679	0.044
Category	Temporal pole, middle and inferior temporal gyrus	R	20/21/38	57 -2 -27	4.97	1558	0.003
Same	Temporal pole, middle and inferior temporal gyrus	R	20/21	57 -13 -20	5.00	1352	0.004
Different	Middle and inferior temporal gyrus	R	20/21	57 -16 -21	4.41	1308	0.009

TABLE 2 | White matter (WM) correlations with RT in Category at $p < 0.05$ after FWE correction at the cluster level.

Negative correlation	Brain region	Side	MNI coordinate	T-value (peak)	Cluster size	Cluster-level P(FWE)
Category	Temporal lobe	R	48 -9 -27	4.92	689	0.023

Same, Different and Shape conditions were not significant.

At $p < 0.001$ uncorrected threshold, additional negative correlations were found with RTs in the *Same* and *Different* conditions as described in the Supplementary Results.

WM Correlations with RT in Shape, Category, Same, and Different Tasks

At an FWE-corrected threshold, RTs in the *Category* dimension were negatively correlated with WM volume in the right temporal lobe (Table 2) i.e., less WM volume was related to slower RTs. This WM region was strictly adjacent to the GM cluster that was correlated negatively with RTs in the *Category* dimension (Figure 4a). To determine what fibers were passing through this region, we explored the anatomical connectivity of the WM-VBM region using tractography-based analyses. No negative correlation was observed with RTs in the *Shape* dimension, as well as the *Same* and *Different* conditions. No significant positive correlation was observed.

At $p < 0.001$ uncorrected for multiple comparisons, additional negative correlation was found as described in the Supplementary Results.

Connectivity Patterns of the WM-VBM Region (Figure 4b)

The connectome representing fibers connecting the right temporal WM region associated with category performance included projection fibers from the right arcuate fasciculus (AF, long segment), inferior fronto-occipital fasciculus (IFOF), uncinate fasciculus (UF), inferior longitudinal fasciculus (ILF), and commissural fibers encompassing the anterior commissure and corpus callosum (splenium).

DISCUSSION

In this study we performed a voxel-based morphometry study to explore the relationship between semantic and shape categorization tasks and morphometric differences in the brain. Three findings emerge from our work. Firstly, our results revealed a significant correlation between subjects' performance in terms of RT in all conditions and dimensions, and the

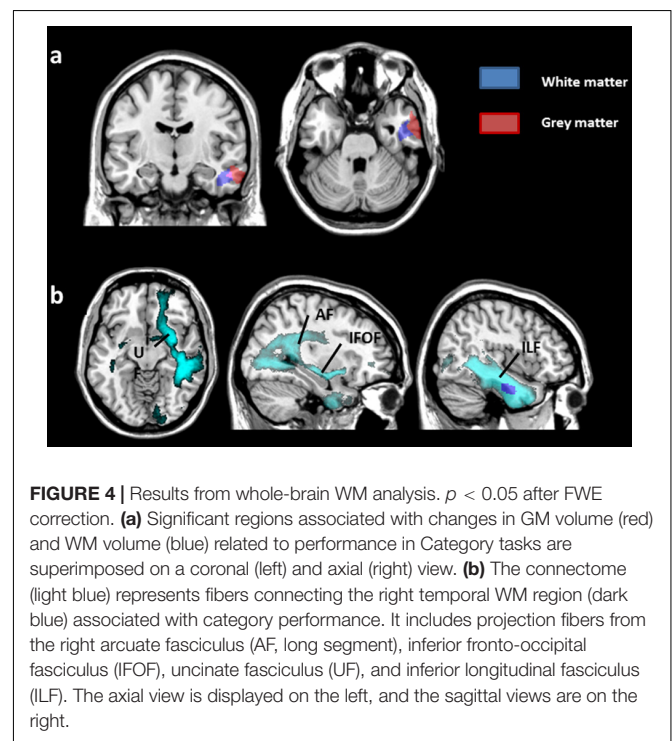


FIGURE 4 | Results from whole-brain WM analysis. $p < 0.05$ after FWE correction. (a) Significant regions associated with changes in GM volume (red) and WM volume (blue) related to performance in Category tasks are superimposed on a coronal (left) and axial (right) view. (b) The connectome (light blue) represents fibers connecting the right temporal WM region (dark blue) associated with category performance. It includes projection fibers from the right arcuate fasciculus (AF, long segment), inferior fronto-occipital fasciculus (IFOF), uncinate fasciculus (UF), and inferior longitudinal fasciculus (ILF). The axial view is displayed on the left, and the sagittal views are on the right.

volume of the right anterior middle and inferior temporal gyri encompassing the ATL. Secondly, the semantic (*Category*) dimension was associated with a more rostral temporal region than the visuoperceptual (*Shape*) dimension. Finally, WM and connectivity analyses showed a correlation between semantic categorization abilities and WM volume in the right temporal lobe, suggesting the role of the right temporal lobe connections in categorization. Tractography analysis showed that these connections might run through the AF, IFOF, UF, and ILF.

The Right Anterior Middle and Inferior Temporal Gyri and Categorization Tasks

Interindividual variability in RTs in categorization tasks was related to the GM volume in the right lateral temporal regions.

Subjects who were faster to categorize drawings had higher GM volume in the right anterior middle and inferior temporal gyri. To our knowledge, this study is the first to show a correlation between categorization abilities and regional GM volume in healthy participants. This result suggests the role of the lateral part of the right ATL in categorization. Our results are consistent with previous studies that showed a correlation between conceptual processing performances in healthy subjects and resting functional connectivity in the ATL (Wei et al., 2012) in relation to the default mode network.

Previous functional imaging data inconsistently showed the involvement of the ATL during perceptual or semantic categorization tasks. Some authors showed an activation of the ATL (Devlin et al., 2000; Binney et al., 2010; Visser et al., 2010a, 2012), whereas others found an activation of the lateral and/or inferior temporal cortex that was posterior to the ATL (Gerlach et al., 2000; Adams and Janata, 2002; Reber et al., 2002; Pernet et al., 2004, 2005; Garcin et al., 2012). The discrepancy of these results may be explained by several factors. First, in fMRI, the observed recruitment of the ATL, a region that is thought to function as a supramodal hub in semantic representation (Patterson et al., 2007), is highly dependent on the contrasting control task that may (Gerlach et al., 2000; Sass et al., 2009) or may not include (Pilgrim et al., 2002; Garcin et al., 2012) a semantic treatment. Second, imaging temporal lobes during classical functional imaging requires a large field of view to ensure whole-brain coverage (Visser et al., 2010b). Finally, evidence of ATL activation is difficult to capture from functional imaging because of susceptibility artifacts caused by variations in magnetic field strength at the interface between brain, bone, and air-filled sinuses; such variations will produce signal loss and distortion (Gorno-Tempini et al., 2002; Visser et al., 2010a). Differences between some of the functional imaging studies and our results may have additional explanations. First, in previous functional imaging studies, the authors examined the regions that were similarly activated across subjects during categorization; they did not explore whether regional activity depends on individual capacities. Second, the correlations found in the present study were based on RTs that, in categorization matching tasks, might correlate with different regions in the temporal lobe than accuracy.

Previous functional imaging data showed the involvement of both the right and left lateral and inferior temporal cortices (Adams and Janata, 2002; Pernet et al., 2004; Garcin et al., 2012) and both right and left ATL (Devlin et al., 2000; Binney et al., 2010; Visser et al., 2010a) in categorization tasks. The right lateralization of our findings based on a categorization paradigm using drawings raised the question of a possible hemispheric specialization according to the nature of the stimuli. The possible specialization of the left and right ATLs for verbal versus pictorial semantic input is currently under debate in the field (Visser et al., 2010b; Gainotti, 2012, 2015). In semantic dementia, left ATL atrophy is correlated with performance in tasks using verbal stimuli (words), whereas right ATL atrophy is correlated with performance in similar tasks using pictorial material (Acres et al., 2009; Butler et al., 2009). Additional anatomic or functional imaging studies of patients with semantic dementia (Butler et al.,

2009; Mion et al., 2010; Snowden et al., 2012) and healthy subjects (Thierry et al., 2003; Tsukiura et al., 2006), as well as a recent review on this topic (Gainotti, 2015), suggested a verbal/non-verbal dissociation in the ATL. On the contrary, (Pobric et al., 2010) showed that inhibitory repetitive transcranial magnetic stimulation over the right or left temporal pole induces a similar verbal and pictorial (non-verbal) deficit in semantic categorization tasks. A recent meta-analysis on the role of ATL in semantic processing performed by the same group did not find support for lateralization within the ATL but demonstrated that visual object processing often recruits ventral ATL structures, while linguistic and auditory processing recruits lateral ATL structures (Visser et al., 2010b). More recently, Lambon Ralph and colleagues proposed an updated version of the “hub and spokes” model of semantic knowledge representation in the brain (Patterson et al., 2007; Ralph et al., 2017). They propose that both ATLs are multimodal, but differences between left and right ATLs in semantic representation are due to differences in white-matter connectivity between the right and left ATLs, the left ATL being more connected to verbal inputs. On the other hand, Gainotti (2017) maintains that these differences are probably due to the different format of the representations subsumed by the right and left ATLs, rather than to their presumed differences in connectivity. Additional studies will be necessary to determine whether there is an actual hemispheric specialization according to the nature of the stimuli and to test whether categorization performances with verbal stimuli are correlated with morphometry of the left ATL.

We cannot exclude that the right lateralization of the main effects in our study can be due to more structural variability on the right ATL than on the left ATL.

Overall, our results complete previous functional imaging findings by demonstrating the relationship between the ability to categorize and the structure of the anterior temporal cortex.

Specialization within the Anterior Temporal Cortex

We showed a rostrocaudal specialization within the temporal lobe: performance in the semantic (*Category*) tasks was associated with more anterior regions of the middle and inferior right temporal gyri than performance in the perceptual (*Shape*) tasks (Figure 3 and Supplementary Figure 2). These results are in agreement with previous imaging data, suggesting that the posteroventral temporal cortex may encode perceptual categorization, such as categorization based on shape or color, sometimes referred to as “presemantic” (Whatmough et al., 2002), whereas more anterior areas encode semantic categories (Devlin et al., 2005; Binder et al., 2009; Chan et al., 2011; Peelen and Caramazza, 2012). Some authors have proposed that modality specific information is processed in relatively specialized parts of the posterior temporal lobe, whereas the anterior regions are more modality invariant (Visser et al., 2012) or process more abstract/conceptual associations (Bonner and Price, 2013). Our findings are consistent with these views, by suggesting a rostrocaudal specialization within the right lateral temporal cortex for processing the *Category* and *Shape* dimensions. However, it should be noted that the shape-related

area in our study is more anterior than the posteroventral temporal region that is usually associated with perceptual categorization. The reasons for this difference with fMRI findings is unclear and should be explored in a further study. Whether the specialization we observe within the ATL relies on a difference in abstraction between shape and category dimensions, or on the semantic or verbal nature of the category task also remains to be tested. In support of the later hypothesis, participants reported a subvocal verbalization of the semantic category in the *Category* but not in the *Shape* task.

Involvement of Frontotemporal Connections

VBM of the WM and connectivity analyses showed a correlation between RTs in semantic categorization (*Category* dimension) and WM volume in the right temporal lobe. The WM VBM region was adjacent to the GM VBM right temporal region that was correlated with the performance in the *Category* dimension (Figure 4a). The WM VBM region included projection fibers from the right IFOF, UF, long segment of the AF, and ILF. The ILF is associated with object and face recognition, and it is part of the ventral stream (Ortibus et al., 2012; Tavor et al., 2014). Its involvement in our tasks was expected, as subjects had to identify objects to categorize them. According to previous work (Duffau et al., 2005), the IFOF and UF are important pathways for relaying information in semantic memory in the dominant hemisphere. This finding is concordant with a recent morphometry study that found a correlation between the left IFOF and UF and semantic memory performance in healthy subjects (de Zubizaray et al., 2011). Although right-sided, the implication of the IFOF and UF is relevant in the *Category* dimension that relies on the semantic knowledge of the objects to categorize.

IFOF, UF, and AF connect the ATL with the frontal lobe. More specifically, the IFOF and UF connect the ATL with medial and lateral orbitofrontal PFC, whereas the AF connects the ATL with the ventrolateral PFC (Thiebaut de Schotten et al., 2011; Binney et al., 2012; Rojkova et al., 2015). Frontal lobes are most likely involved in categorization tasks, notably in the executive control necessary for categorization. Increasing evidence supported the role of frontal lobes in categorization. Patients with frontal lobe lesions show categorization difficulties (Pribram and Luria, 1973; Stuss et al., 1983; Dubois et al., 2000; Fine et al., 2009; Garcin et al., 2012; Lagarde et al., 2015). Functional imaging studies also indicated a role of the lateral PFC for categorization (Tyler et al., 2001; Adams and Janata, 2002; Devlin et al., 2002; Grossman et al., 2002; Pilgrim et al., 2002; Reber et al., 2002; Vogels et al., 2002; Pernet et al., 2004; Koenig et al., 2005; Sass et al., 2009; Milton et al., 2009; Garcin et al., 2012; Visser et al., 2012), and electrophysiological recording in primates demonstrated a specific role of the PFC in categorization (Freedman et al., 2003). In agreement with these data, our results of GM volume relationships at an uncorrected threshold showed a positive correlation between RTs in the *Shape* dimension and the right IFG (BA 47), and between RTs in the *Category* dimension and the left inferior and middle frontal gyri (BA 45/46) (see Supplementary

Material). Overall, the correlation of subjects' performances in the *Category* tasks with a temporal WM region and with the tracts that connect the temporal lobes with the frontal lobe, combined with the correlation of frontal GM volume with categorization tasks, suggest a role of the lateral PFC in these tasks.

Limitations

We could not exclude that variable processing speed may have influenced our results, because our findings were based on RTs and not accuracy. A previous study performed on 367 healthy subjects found a correlation between processing speed as assessed by the part A of the Trail Making Test (Reitan, 1955) and GM volume in the right occipital lobe but no correlation with the temporal GM volume (Ruscheweyh et al., 2013). Studies performed on healthy adults revealed a correlation between processing speed and global WM volume, but no correlation was found with regional WM volume (Penke et al., 2010; Magistro et al., 2015). Finally, our results are concordant with previous studies showing that surgical unilateral resection of the ATL in patients with epilepsy (Lambon Ralph et al., 2012) or inhibition of the ATL induced by repetitive transcranial magnetic stimulation in healthy subjects (Pobric et al., 2010) can increase RTs in semantic assessment tasks. For these reasons, our correlations were unlikely solely caused by processing speed itself.

Additionally, the physiological significance of GM volume correlation remains unclear. For instance, performances negatively correlated with GM volume of the PFC. Correlations between cognition and GM volume, notably in the PFC, do not always respond to the assertion "bigger is better." Some studies have reported a positive correlation (Yuan and Raz, 2014) and others have found a negative correlation (Salat et al., 2002; Goh et al., 2011; Smolker et al., 2015; Aichelburg et al., 2016). The physiological link between cognitive performances and GM volume is not fully understood and may depend on brain maturation and on the synaptic pruning that leads to cortex thinning (Shaw et al., 2006; Dumontheil et al., 2008), as well as on environmental factors, such as training and cognitive stimulation.

CONCLUSION

Our results showed the role of the right ATL in categorization abilities in healthy subjects. This study suggested a rostrocaudal specialization in the temporolateral cortex according to the nature of the category. Semantic category judgment was associated with more anterior regions than visuo-perceptual category judgment. To our knowledge, this is the first study on the cerebral basis of interindividual variability of categorization abilities. The results add to the current knowledge of the cerebral basis of categorization.

AUTHOR CONTRIBUTIONS

BG: conception, organization, execution of the research project, design and execution of statistical analysis, writing of the first

draft and revision of the manuscript. MU and MT: design and execution of statistical analysis, review and critique of manuscript. RL: conception of research project, review and critique of manuscript. EV: conception, organization, execution of the research project, design and execution of statistical analysis, revision of the manuscript.

ACKNOWLEDGMENTS

This work was supported by the ‘Fondation pour la Recherche Médicale’ (FRM) [grant numbers FDM20150632801 and

DEQ20150331725]. Additional support comes from the ‘Agence Nationale de la Recherche,’ [grants numbers ANR-09-RPDOC-004-01 and ANR-13-JSV4-0001-01]. The research leading to these results received funding from the program ‘Investissements d’avenir’ ANR-10-IAIHU-06.

SUPPLEMENTARY MATERIAL

The Supplementary Material for this article can be found online at: <https://www.frontiersin.org/articles/10.3389/fnhum.2018.00036/full#supplementary-material>

REFERENCES

- Acres, K., Taylor, K. I., Moss, H. E., Stamatakis, E. A., and Tyler, L. K. (2009). Complementary hemispheric asymmetries in object naming and recognition: a voxel-based correlational study. *Neuropsychologia* 47, 1836–1843. doi: 10.1016/j.neuropsychologia.2009.02.024
- Adams, R. B., and Janata, P. (2002). A comparison of neural circuits underlying auditory and visual object categorization. *Neuroimage* 16, 361–377. doi: 10.1006/nimg.2002.1088
- Aichelburg, C., Urbanski, M., Thiebaut de Schotten, M., Humbert, F., Levy, R., and Volle, E. (2016). Morphometry of left frontal and temporal poles predicts analogical reasoning abilities. *Cereb. Cortex* 26, 915–932. doi: 10.1093/cercor/bhu254
- Anderson, A. W. (2005). Measurement of fiber orientation distributions using high angular resolution diffusion imaging. *Magn. Reson. Med.* 54, 1194–1206. doi: 10.1002/mrm.20667
- Andersson, J. L. R., Skare, S., and Ashburner, J. (2003). How to correct susceptibility distortions in spin-echo echo-planar images: application to diffusion tensor imaging. *Neuroimage* 20, 870–888. doi: 10.1016/S1053-8119(03)00336-7
- Arango-Lasprilla, J. C., Rivera, D., Longoni, M., Saracho, C. P., Garza, M. T., Aliaga, A., et al. (2015). Modified Wisconsin card sorting test (M-WCST): normative data for the Latin American Spanish speaking adult population. *NeuroRehabilitation* 37, 563–590. doi: 10.3233/NRE-151280
- Ashburner, J. (2007). A fast diffeomorphic image registration algorithm. *Neuroimage* 38, 95–113. doi: 10.1016/j.neuroimage.2007.07.007
- Ashburner, J., and Friston, K. J. (2005). Unified segmentation. *Neuroimage* 26, 839–851. doi: 10.1016/j.neuroimage.2005.02.018
- Binder, J. R., Desai, R. H., Graves, W. W., and Conant, L. L. (2009). Where is the semantic system? A critical review and meta-analysis of 120 functional neuroimaging studies. *Cereb. Cortex* 19, 2767–2796. doi: 10.1093/cercor/bhp055
- Binney, R. J., Embleton, K. V., Jefferies, E., Parker, G. J., and Ralph, M. A. (2010). The ventral and inferolateral aspects of the anterior temporal lobe are crucial in semantic memory: evidence from a novel direct comparison of distortion-corrected fMRI, rTMS, and semantic dementia. *Cereb. Cortex* 20, 2728–2738. doi: 10.1093/cercor/bhq019
- Binney, R. J., Parker, G. J. M., and Lambon Ralph, M. A. (2012). Convergent connectivity and graded specialization in the rostral human temporal lobe as revealed by diffusion-weighted imaging probabilistic tractography. *J. Cogn. Neurosci.* 24, 1998–2014. doi: 10.1162/jocn_a_00263
- Bonner, M. F., and Price, A. R. (2013). Where is the anterior temporal lobe and what does it do? *J. Neurosci.* 33, 4213–4215. doi: 10.1523/JNEUROSCI.0041-13.2013
- Butler, C. R., Brambati, S. M., Miller, B. L., and Gorno-Tempini, M.-L. (2009). The neural correlates of verbal and nonverbal semantic processing deficits in neurodegenerative disease. *Cogn. Behav. Neurol.* 22, 73–80. doi: 10.1097/WNN.0b013e318197925d
- Caffarra, P., Vezzadini, G., Dieci, F., Zonato, F., and Venneri, A. (2004). Modified card sorting test: normative data. *J. Clin. Exp. Neuropsychol.* 26, 246–250. doi: 10.1076/jcen.26.2.246.28087
- Callahan, B. L., Macoir, J., Hudon, C., Bier, N., Chouinard, N., Cossette-Harvey, M., et al. (2010). Normative data for the pyramids and palm trees test in the Quebec-French population. *Arch. Clin. Neuropsychol.* 25, 212–217. doi: 10.1093/arclin/acq013
- Chan, A. M., Baker, J. M., Eskandar, E., Schomer, D., Ulbert, I., Marinkovic, K., et al. (2011). First-pass selectivity for semantic categories in human anteroventral temporal lobe. *J. Neurosci.* 31, 18119–18129. doi: 10.1523/JNEUROSCI.3122-11.2011
- de Zubicaray, G. I., Rose, S. E., and McMahon, K. L. (2011). The structure and connectivity of semantic memory in the healthy older adult brain. *Neuroimage* 54, 1488–1494. doi: 10.1016/j.neuroimage.2010.08.058
- Delis, D. C., Kaplan, E., and Kramer, J. H. (2001). *Delis-Kaplan Executive Function System (D-KEFS)*. San Antonio, TX: The Psychological Corporation.
- Dell’acqua, F., Scifo, P., Rizzo, G., Catani, M., Simmons, A., Scotti, G., et al. (2010). A modified damped Richardson-Lucy algorithm to reduce isotropic background effects in spherical deconvolution. *Neuroimage* 49, 1446–1458. doi: 10.1016/j.neuroimage.2009.09.033
- Dell’acqua, F., Simmons, A., Williams, S. C. R., and Catani, M. (2012). Can spherical deconvolution provide more information than fiber orientations? Hindrance modulated orientational anisotropy, a true-tract specific index to characterize white matter diffusion. *Hum. Brain Mapp.* 34, 2464–2483. doi: 10.1002/hbm.22080
- Devlin, J. T., Rushworth, M. F. S., and Matthews, P. M. (2005). Category-related activation for written words in the posterior fusiform is task specific. *Neuropsychologia* 43, 69–74. doi: 10.1016/j.neuropsychologia.2004.06.013
- Devlin, J. T., Russell, R. P., Davis, M. H., Price, C. J., Moss, H. E., Fadili, M. J., et al. (2002). Is there an anatomical basis for category-specificity? Semantic memory studies in PET and fMRI. *Neuropsychologia* 40, 54–75. doi: 10.1016/S0028-3932(01)00066-5
- Devlin, J. T., Russell, R. P., Davis, M. H., Price, C. J., Wilson, J., Moss, H. E., et al. (2000). Susceptibility-induced loss of signal: comparing PET and fMRI on a semantic task. *Neuroimage* 11, 589–600. doi: 10.1006/nimg.2000.0595
- Dubois, B., Slachevsky, A., Litvan, I., and Pillon, B. (2000). The FAB: a frontal assessment battery at bedside. *Neurology* 55, 1621–1626. doi: 10.1212/WNL.55.11.1621
- Duffau, H., Gatignol, P., Mandonnet, E., Peruzzi, P., Tzourio-Mazoyer, N., and Capelle, L. (2005). New insights into the anatomo-functional connectivity of the semantic system: a study using cortico-subcortical electrostimulations. *Brain J. Neurol.* 128, 797–810. doi: 10.1093/brain/awh423
- Dumontheil, I., Burgess, P. W., and Blakemore, S.-J. (2008). Development of rostral prefrontal cortex and cognitive and behavioural disorders. *Dev. Med. Child Neurol.* 50, 168–181. doi: 10.1111/j.1469-8749.2008.02026.x
- Fine, E. M., Delis, D. C., Dean, D., Beckman, V., Miller, B. L., Rosen, H. J., et al. (2009). Left frontal lobe contributions to concept formation: a quantitative MRI study of performance on the Delis-Kaplan Executive Function System Sorting Test. *J. Clin. Exp. Neuropsychol.* 31, 624–631. doi: 10.1080/13803390802419017
- Fischl, B., Rajendran, N., Busa, E., Augustinack, J., Hinds, O., Yeo, B. T., et al. (2008). Cortical folding patterns and predicting cytoarchitecture. *Cereb. Cortex* 18, 1973–1980. doi: 10.1093/cercor/bhm225
- Folstein, M. F., Folstein, S. E., and McHugh, P. R. (1975). “Mini-mental state”. A practical method for grading the cognitive state of patients for the clinician. *J. Psychiatr. Res.* 12, 189–198. doi: 10.1016/0022-3956(75)90026-6

- Freedman, D. J., Riesenhuber, M., Poggio, T., and Miller, E. K. (2003). A comparison of primate prefrontal and inferior temporal cortices during visual categorization. *J. Neurosci.* 23, 5235–5246.
- Gainotti, G. (2012). The format of conceptual representations disrupted in semantic dementia: a position paper. *Cortex* 48, 521–529. doi: 10.1016/j.cortex.2011.06.019
- Gainotti, G. (2015). Is the difference between right and left ATLs due to the distinction between general and social cognition or between verbal and non-verbal representations? *Neurosci. Biobehav. Rev.* 51, 296–312. doi: 10.1016/j.neubiorev.2015.02.004
- Gainotti, G. (2017). The differential contributions of conceptual representation format and language structure to levels of semantic abstraction capacity. *Neuropsychol. Rev.* 27, 134–145. doi: 10.1007/s11065-016-9339-8
- Gamboza, N., Coluccia, E., Iavarone, A., and Brandimonte, M. A. (2009). Normative data for the Pyramids and Palm Trees Test in the elderly Italian population. *Neurol. Sci.* 30, 453–458. doi: 10.1007/s10072-009-0130-y
- Garcin, B., Volle, E., Dubois, B., and Lévy, R. (2012). Similar or different? The role of the ventrolateral prefrontal cortex in similarity detection. *PLOS ONE* 7:e34164. doi: 10.1371/journal.pone.0034164
- Gerlach, C., Law, I., Gade, A., and Paulson, O. B. (2000). Categorization and category effects in normal object recognition: a PET study. *Neuropsychologia* 38, 1693–1703. doi: 10.1016/S0028-3932(00)00082-8
- Goh, S., Bansal, R., Xu, D., Hao, X., Liu, J., and Peterson, B. S. (2011). Neuroanatomical correlates of intellectual ability across the life span. *Dev. Cogn. Neurosci.* 1, 305–312. doi: 10.1016/j.dcn.2011.03.001
- Gorno-Tempini, M. L., Hutton, C., Josephs, O., Deichmann, R., Price, C., and Turner, R. (2002). Echo time dependence of BOLD contrast and susceptibility artifacts. *Neuroimage* 15, 136–142. doi: 10.1006/nimg.2001.0967
- Grossman, M., Smith, E. E., Koenig, P., Glosser, G., DeVita, C., Moore, P., et al. (2002). The neural basis for categorization in semantic memory. *Neuroimage* 17, 1549–1561. doi: 10.1006/nimg.2002.1273
- Harrison, A. G., Armstrong, I. T., Harrison, L. E., Lange, R. T., and Iverson, G. L. (2014). Comparing Canadian and American normative scores on the Wechsler adult intelligence scale-fourth edition. *Arch. Clin. Neuropsychol.* 29, 737–746. doi: 10.1093/arclin/acu048
- Homack, S., Lee, D., and Riccio, C. A. (2005). Test review: Delis-Kaplan executive function system. *J. Clin. Exp. Neuropsychol.* 27, 599–609. doi: 10.1080/13803390490918444
- Howard, D., and Patterson, K. (1992). *Pyramids and Palm Trees: A Test of Semantic Access from Pictures and Words*. Bury St Edmunds: Thames Valley Test Company.
- Klein, A., Andersson, J., Ardekani, B. A., Ashburner, J., Avants, B., Chiang, M. C., et al. (2009). Evaluation of 14 nonlinear deformation algorithms applied to human brain MRI registration. *Neuroimage* 46, 786–802. doi: 10.1016/j.neuroimage.2008.12.037
- Klein, L. A., and Buchanan, J. A. (2009). Psychometric properties of the Pyramids and Palm Trees Test. *J. Clin. Exp. Neuropsychol.* 31, 803–808. doi: 10.1080/13803390802508926
- Koenig, P., Smith, E. E., Glosser, G., DeVita, C., Moore, P., McMillan, C., et al. (2005). The neural basis for novel semantic categorization. *Neuroimage* 24, 369–383. doi: 10.1016/j.neuroimage.2004.08.045
- Lagarde, J., Valabrègue, R., Corvol, J. C., Garcin, B., Volle, E., Le, B. I., et al. (2015). Why do patients with neurodegenerative frontal syndrome fail to answer: “In what way are an orange and a banana alike?”. *Brain J. Neurol.* 138, 456–471. doi: 10.1093/brain/awu359
- Lambon Ralph, M. A., Ehsan, S., Baker, G. A., and Rogers, T. T. (2012). Semantic memory is impaired in patients with unilateral anterior temporal lobe resection for temporal lobe epilepsy. *Brain J. Neurol.* 135, 242–258. doi: 10.1093/brain/awr325
- Leemans, A., and Jones, D. K. (2009). The B-matrix must be rotated when correcting for subject motion in DTI data. *Magn. Reson. Med.* 61, 1336–1349. doi: 10.1002/mrm.21890
- Magistro, D., Takeuchi, H., Nejad, K. K., Taki, Y., Sekiguchi, A., Nouchi, R., et al. (2015). The relationship between processing speed and regional white matter volume in healthy young people. *PLOS ONE* 10:e0136386. doi: 10.1371/journal.pone.0136386
- Mattioli, F., Stampatori, C., Bellomi, F., Scarpazza, C., Galli, P., Guarneri, C., et al. (2014). Assessing executive function with the D-KEFS sorting test: normative data for a sample of the Italian adult population. *Neurol. Sci.* 35, 1895–1902. doi: 10.1007/s10072-014-1857-7
- Mazziotta, J. C., Toga, A. W., Evans, A., Fox, P., and Lancaster, J. (1995). A probabilistic atlas of the human brain: theory and rationale for its development. The International Consortium for Brain Mapping (ICBM). *Neuroimage* 2, 89–101. doi: 10.1006/nimg.1995.1012
- Merck, C., Charnallet, A., Auriacombe, S., Belliard, S., Hahn-Barma, V., Kremmin, H., et al. (2011). La batterie d'évaluation des connaissances sémantiques du GRECO (BECS-GRECO): validation et données normatives. *Rev. Neuropsychol.* 3, 235–255. doi: 10.3917/rne.034.0235
- Milner, B. (1963). Effect of different brain lesions on card sorting. *JAMA Neurol.* 9, 90–100. doi: 10.1001/archneur.1963.00460070100010
- Milton, F., Wills, A. J., and Hodgson, T. L. (2009). The neural basis of overall similarity and single-dimension sorting. *Neuroimage* 46, 319–326. doi: 10.1016/j.neuroimage.2009.01.043
- Mion, M., Patterson, K., Acosta-Cabronero, J., Pengas, G., Izquierdo-Garcia, D., Hong, Y. T., et al. (2010). What the left and right anterior fusiform gyri tell us about semantic memory. *Brain J. Neurol.* 133, 3256–3268. doi: 10.1093/brain/awq272
- Ortibus, E., Verhoeven, J., Sunaert, S., Casteels, I., de Cock, P., and Lagae, L. (2012). Integrity of the inferior longitudinal fasciculus and impaired object recognition in children: a diffusion tensor imaging study. *Dev. Med. Child Neurol.* 54, 38–43. doi: 10.1111/j.1469-8749.2011.04147.x
- Patterson, K., Nestor, P. J., and Rogers, T. T. (2007). Where do you know what you know? The representation of semantic knowledge in the human brain. *Nat. Rev. Neurosci.* 8, 976–987. doi: 10.1038/nrn2277
- Peelen, M. V., and Caramazza, A. (2012). Conceptual object representations in human anterior temporal cortex. *J. Neurosci.* 32, 15728–15736. doi: 10.1523/JNEUROSCI.1953-12.2012
- Penke, L., Muñoz Maniega, S., Murray, C., Gow, A. J., Hernández, M. C., Clayden, J. D., et al. (2010). A general factor of brain white matter integrity predicts information processing speed in healthy older people. *J. Neurosci.* 30, 7569–7574. doi: 10.1523/JNEUROSCI.1553-10.2010
- Pernet, C., Celsis, P., and Démonet, J.-F. (2005). Selective response to letter categorization within the left fusiform gyrus. *Neuroimage* 28, 738–744. doi: 10.1016/j.neuroimage.2005.06.046
- Pernet, C., Franceries, X., Basan, S., Cassol, E., Démonet, J. F., and Celsis, P. (2004). Anatomy and time course of discrimination and categorization processes in vision: an fMRI study. *Neuroimage* 22, 1563–1577. doi: 10.1016/j.neuroimage.2004.03.044
- Pilgrim, L. K., Fadili, J., Fletcher, P., and Tyler, L. K. (2002). Overcoming confounds of stimulus blocking: an event-related fMRI design of semantic processing. *Neuroimage* 16, 713–723. doi: 10.1006/nimg.2002.1105
- Pobric, G., Jefferies, E., and Ralph, M. A. L. (2010). Amodal semantic representations depend on both anterior temporal lobes: evidence from repetitive transcranial magnetic stimulation. *Neuropsychologia* 48, 1336–1342. doi: 10.1016/j.neuropsychologia.2009.12.036
- Pribram, K. H., and Luria, A. R. (1973). *Psychophysiology of the Frontal Lobes*. Cambridge, MA: Academic Press.
- Ralph, M. A. L., Jefferies, E., Patterson, K., and Rogers, T. T. (2017). The neural and computational bases of semantic cognition. *Nat. Rev. Neurosci.* 18, 42–55. doi: 10.1038/nrn.2016.150
- Rami, L., Serradell, M., Bosch, B., Caprile, C., Sekler, A., Villar, A., et al. (2008). Normative data for the Boston Naming Test and the Pyramids and Palm Trees Test in the elderly Spanish population. *J. Clin. Exp. Neuropsychol.* 30, 1–6. doi: 10.1080/13803390701743954
- Reber, P. J., Wong, E. C., and Buxton, R. B. (2002). Comparing the brain areas supporting nondeclarative categorization and recognition memory. *Brain Res. Cogn. Brain Res.* 14, 245–257. doi: 10.1016/S0926-6410(02)00122-2
- Reitan, R. M. (1955). The relation of the trail making test to organic brain damage. *J. Consult. Psychol.* 19, 393–394. doi: 10.1037/h0044509
- Rojkova, K., Volle, E., Urbanski, M., Humbert, F., Dell'Acqua, F., and Thiebaut de Schotten, M. (2015). Atlasing the frontal lobe connections and their variability due to age and education: a spherical deconvolution tractography study. *Brain Struct. Funct.* 221, 1751–1766. doi: 10.1007/s00429-015-1001-3
- Ruscheweyh, R., Deppe, M., Lohmann, H., Wersching, H., Korsukewitz, C., Dünig, T., et al. (2013). Executive performance is related to regional gray

- matter volume in healthy older individuals. *Hum. Brain Mapp.* 34, 3333–3346. doi: 10.1002/hbm.22146
- Salat, D. H., Kaye, J. A., and Janowsky, J. S. (2002). Greater orbital prefrontal volume selectively predicts worse working memory performance in older adults. *Cereb. Cortex* 12, 494–505. doi: 10.1093/cercor/12.5.494
- Sass, K., Sachs, O., Krach, S., and Kircher, T. (2009). Taxonomic and thematic categories: neural correlates of categorization in an auditory-to-visual priming task using fMRI. *Brain Res.* 1270, 78–87. doi: 10.1016/j.brainres.2009.03.013
- Schmahmann, J. D., Pandya, D. N., Wang, R., Dai, G., D'Arceuil, H. E., de Crespigny, A. J., et al. (2007). Association fibre pathways of the brain: parallel observations from diffusion spectrum imaging and autoradiography. *Brain J. Neurol.* 130, 630–653. doi: 10.1093/brain/awl359
- Shan, I.-K., Chen, Y.-S., Lee, Y.-C., and Su, T.-P. (2008). Adult normative data of the Wisconsin Card Sorting Test in Taiwan. *J. Chin. Med. Assoc.* 71, 517–522. doi: 10.1016/S1726-4901(08)70160-6
- Shaw, P., Greenstein, D., Lerch, J., Clasen, L., Lenroot, R., Gogtay, N., et al. (2006). Intellectual ability and cortical development in children and adolescents. *Nature* 440, 676–679. doi: 10.1038/nature04513
- Sigala, N., and Logothetis, N. K. (2002). Visual categorization shapes feature selectivity in the primate temporal cortex. *Nature* 415, 318–320. doi: 10.1038/415318a
- Smith, S. M., Jenkinson, M., Woolrich, M. W., Beckmann, C. F., Behrens, T. E., Johansen-Berg, H., et al. (2004). Advances in functional and structural MR image analysis and implementation as FSL. *Neuroimage* 23(Suppl. 1), S208–S219. doi: 10.1016/j.neuroimage.2004.07.051
- Smolker, H. R., Depue, B. E., Reineberg, A. E., Orr, J. M., and Banich, M. T. (2015). Individual differences in regional prefrontal gray matter morphometry and fractional anisotropy are associated with different constructs of executive function. *Brain Struct. Funct.* 220, 1291–1306. doi: 10.1007/s00429-014-0723-y
- Snowden, J. S., Thompson, J. C., and Neary, D. (2012). Famous people knowledge and the right and left temporal lobes. *Behav. Neurol.* 25, 35–44. doi: 10.3233/BEN-2012-0347
- Stuss, D. T., Benson, D. F., Kaplan, E. F., Weir, W. S., Naeser, M. A., Lieberman, I., et al. (1983). The involvement of orbitofrontal cerebrum in cognitive tasks. *Neuropsychologia* 21, 235–248. doi: 10.1016/0028-3932(83)90040-4
- Tavor, I., Yablonski, M., Mezer, A., Rom, S., Assaf, Y., and Yovel, G. (2014). Separate parts of occipito-temporal white matter fibers are associated with recognition of faces and places. *Neuroimage* 86, 123–130. doi: 10.1016/j.neuroimage.2013.07.085
- Thiebaut de Schotten, M., Ffytche, D. H., Bizzi, A., Dell'Acqua, F., Allin, M., Walshe, M., et al. (2011). Atlasing location, asymmetry and inter-subject variability of white matter tracts in the human brain with MR diffusion tractography. *Neuroimage* 54, 49–59. doi: 10.1016/j.neuroimage.2010.07.055
- Thierry, G., Giraud, A. L., and Price, C. (2003). Hemispheric dissociation in access to the human semantic system. *Neuron* 38, 499–506. doi: 10.1016/S0896-6273(03)00199-5
- Tournier, J.-D., Calamante, F., Gadian, D. G., and Connelly, A. (2004). Direct estimation of the fiber orientation density function from diffusion-weighted MRI data using spherical deconvolution. *Neuroimage* 23, 1176–1185. doi: 10.1016/j.neuroimage.2004.07.037
- Tsukiura, T., Mochizuki-Kawai, H., and Fujii, T. (2006). Dissociable roles of the bilateral anterior temporal lobe in face-name associations: an event-related fMRI study. *Neuroimage* 30, 617–626. doi: 10.1016/j.neuroimage.2005.09.043
- Tyler, L. K., Russell, R., Fadili, J., and Moss, H. E. (2001). The neural representation of nouns and verbs: PET studies. *Brain J. Neurol.* 124, 1619–1634. doi: 10.1093/brain/124.8.1619
- Uylings, H. B., Rajkowska, G., Sanz-Arigita, E., Amunts, K., and Zilles, K. (2005). Consequences of large interindividual variability for human brain atlases: converging macroscopic imaging and microscopical neuroanatomy. *Anat. Embryol.* 210, 423–431. doi: 10.1007/s00429-005-0042-4
- Visser, M., Embleton, K. V., Jefferies, E., Parker, G. J., and Ralph, M. A. (2010a). The inferior, anterior temporal lobes and semantic memory clarified: novel evidence from distortion-corrected fMRI. *Neuropsychologia* 48, 1689–1696. doi: 10.1016/j.neuropsychologia.2010.02.016
- Visser, M., Jefferies, E., Embleton, K. V., and Lambon Ralph, M. A. (2012). Both the middle temporal gyrus and the ventral anterior temporal area are crucial for multimodal semantic processing: distortion-corrected fMRI evidence for a double gradient of information convergence in the temporal lobes. *J. Cogn. Neurosci.* 24, 1766–1778. doi: 10.1162/jocn_a_00244
- Visser, M., Jefferies, E., and Lambon Ralph, M. A. (2010b). Semantic processing in the anterior temporal lobes: a meta-analysis of the functional neuroimaging literature. *J. Cogn. Neurosci.* 22, 1083–1094. doi: 10.1162/jocn.2009.21309
- Vogels, R., Sary, G., Dupont, P., and Orban, G. A. (2002). Human brain regions involved in visual categorization. *Neuroimage* 16, 401–414. doi: 10.1006/nimg.2002.1109
- Wechsler, D. (2008). *Wechsler Adult Intelligence Scale - (WAIS - IV) Administration and Scoring Manual*, 4th Edn. San Antonio, TX: Pearson.
- Wei, T., Liang, X., He, Y., Zang, Y., Han, Z., Caramazza, A., et al. (2012). Predicting conceptual processing capacity from spontaneous neuronal activity of the left middle temporal gyrus. *J. Neurosci.* 32, 481–489. doi: 10.1523/JNEUROSCI.1953-11.2012
- Whatmough, C., Chertkow, H., Murtha, S., and Hanratty, K. (2002). Dissociable brain regions process object meaning and object structure during picture naming. *Neuropsychologia* 40, 174–186. doi: 10.1016/S0028-3932(01)00083-5
- Wisdom, N. M., Mignogna, J., and Collins, R. L. (2012). Variability in Wechsler Adult Intelligence Scale-IV subtest performance across age. *Arch. Clin. Neuropsychol.* 27, 389–397. doi: 10.1093/arclin/acs041
- Yuan, P., and Raz, N. (2014). Prefrontal cortex and executive functions in healthy adults: a meta-analysis of structural neuroimaging studies. *Neurosci. Biobehav. Rev.* 42, 180–192. doi: 10.1016/j.neubiorev.2014.02.005

Conflict of Interest Statement: The authors declare that the research was conducted in the absence of any commercial or financial relationships that could be construed as a potential conflict of interest.

Copyright © 2018 Garcin, Urbanski, Thiebaut de Schotten, Levy and Volle. This is an open-access article distributed under the terms of the Creative Commons Attribution License (CC BY). The use, distribution or reproduction in other forums is permitted, provided the original author(s) and the copyright owner are credited and that the original publication in this journal is cited, in accordance with accepted academic practice. No use, distribution or reproduction is permitted which does not comply with these terms.