



OPEN ACCESS

EDITED BY

Niels Bergsland,
University at Buffalo, United States

REVIEWED BY

Krista K. Ingram,
Colgate University, United States
Haitham Jahrami,
Arabian Gulf University, Bahrain

*CORRESPONDENCE

Eglė Sakalauskaitė-Juodeikienė
✉ egle.sakalauskaite-juodeikiene@mfv.vu.lt

RECEIVED 21 September 2023

ACCEPTED 09 November 2023

PUBLISHED 27 November 2023

CITATION

Jonušaitė I, Sakalauskaitė-Juodeikienė E,
Kizlaitienė R, Giedraitienė N, Sereikė I,
Liutkienė J, Kaubrys G and Jatužis D (2023)
Chronotypes and their relationship with
depression, anxiety, and fatigue among patients
with multiple sclerosis in Vilnius, Lithuania.
Front. Neurol. 14:1298258.
doi: 10.3389/fneur.2023.1298258

COPYRIGHT

© 2023 Jonušaitė, Sakalauskaitė-Juodeikienė,
Kizlaitienė, Giedraitienė, Sereikė, Liutkienė,
Kaubrys and Jatužis. This is an open-access
article distributed under the terms of the
[Creative Commons Attribution License \(CC BY\)](https://creativecommons.org/licenses/by/4.0/).
The use, distribution or reproduction in other
forums is permitted, provided the original
author(s) and the copyright owner(s) are
credited and that the original publication in this
journal is cited, in accordance with accepted
academic practice. No use, distribution or
reproduction is permitted which does not
comply with these terms.

Chronotypes and their relationship with depression, anxiety, and fatigue among patients with multiple sclerosis in Vilnius, Lithuania

Ieva Jonušaitė, Eglė Sakalauskaitė-Juodeikienė*,
Rasa Kizlaitienė, Nataša Giedraitienė, Ieva Sereikė,
Justina Liutkienė, Gintaras Kaubrys and Dalius Jatužis

Clinic of Neurology and Neurosurgery, Institute of Clinical Medicine, Faculty of Medicine, Vilnius University, Vilnius, Lithuania

Background: Approximately half of patients with multiple sclerosis (PWMS) experience sleep disorders or changes in the circadian rhythm, that may further promote the pathogenesis of multiple sclerosis. As the prevalence of chronotypes among PWMS remains unclear, we aimed to evaluate the prevalence of chronotypes among Lithuanian PWMS; to assess the relationship of chronotypes with depression, anxiety, and fatigue symptoms; and to compare these results with those of healthy controls.

Methods: We enrolled 101 PWMS and 100 healthy controls. We included 130 (64.7%) and 71 (35.3%) women and men, respectively. The median age of all respondents was 39 [interquartile range (IQR) 20.75] years. Participants were assessed using general questionnaire, Horne-Östberg Morningness-Eveningness Questionnaire (MEQ), Hospital Anxiety and Depression Scale (HADS), and Shortened Fatigue Questionnaire (SFQ). Chronotypes were identified based on the total MEQ score.

Results: The average MEQ scores of the PWMS and control groups were 54 (IQR 15.0) and 53.5 (IQR 13), respectively, which indicated the intermediate chronotype. There was no significant between-group difference in the prevalence of chronotypes ($p = 0.893$). In both groups, individuals with moderate evening and intermediate chronotypes showed higher average HADS depression scores ($p = 0.022$). Further, in both groups, the individuals with the evening chronotype showed the highest average HADS anxiety scores ($p = 0.001$). The PWMS group had a higher average SFQ score than the control group ($p < 0.001$). High SFQ scores were more common among PWMS who had the intermediate ($p < 0.001$) and morning chronotypes ($p = 0.011$). The fatigue level was higher among healthy individuals with the evening chronotype ($p < 0.001$).

Conclusion: The most common chronotype for PWMS and healthy controls was the intermediate chronotype. Further, in both groups, higher HADS depression and anxiety scores were associated with the evening chronotype. Fatigue was more commonly found in healthy controls with the evening, and in PWMS - with intermediate and morning chronotypes.

KEYWORDS

chronotype, circadian rhythm, multiple sclerosis, MEQ, HADS, SFQ

1 Introduction

Circadian rhythm disorders are defined as non-conformities between individual sleep habits and a regular sleep model based on the time of day (1, 2). Circadian rhythm disorders affect working efficiency during the daytime and decrease the general quality of life. The suprachiasmatic nucleus (SCN) is the central pacemaker of the circadian timing system and regulates most circadian rhythms in the mammalian body (3–5). However, circadian rhythm regulation is more complicated and involves circadian genes in every cell, which participate in circadian rhythm regulation from the periphery under the control of the central pacemaker (6–8).

An individual's chronotype refers to the individual's tendency to sleep at a certain time during 24 h, which is genetically determined by the internal biological clock (9–12). Chronotypes are affected by circadian polymorphisms and environmental factors such as bright light, physical activity, socialisation, and eating habits (13). Chronotypes can be classified into three main categories: the morning type (when there is a natural desire to sleep early in the evening and wake up early in the morning, with the morning being usually the most productive time of the day), the evening type (an individual usually goes to sleep past midnight and wakes up late in the morning or at noon, with the afternoon being the most productive time of the day), and the intermediate type (the most common type [$\approx 60\%$ of the population], which is described as a combination of the morning and evening chronotypes) (14, 15).

The dominant chronotype of infants and preschool-aged children is the morning type. The evening chronotype is prevalent among teenagers and young adults ($\approx 40\%$) (13). Notably, the evening chronotype is associated with a negative impact on both health and social life (16–19). The negative effects of the evening chronotype could be attributed to the conflict between the social life regimen and individual chronotypes. Intermediate chronotype is typically observed in adults (16). However, the chronotype returns to the morning type with further ageing (14, 20). The diagnosis of circadian disorders of the sleep-wake cycle is usually based on the patient's complains of insomnia, moreover, the sleep disturbance should be associated with impairment of social, occupational, or other areas of functioning. Horne–Östberg Morningness–Eveningness Questionnaire (MEQ) may be useful in confirming patient's circadian preference, in addition, sleep log or actigraphy monitoring for 14 days should be also performed to confirm the clinical diagnosis (2). Therefore, it is important to note that the existence of evening or morning chronotype for the patient is not a disease itself, but a biological condition and basis of a disease to occur in the future. If the patient can adapt one's lifestyle, work, studies, and other social activities to the chronotype, one can be free of any complaints of sleep quality and quantity, and thus have no circadian rhythm disorder.

Chronotypes can be evaluated subjectively [Munich Chronotype Questionnaire (MCTQ), MEQ] and objectively [dim light melatonin onset (DMLO), phase angle of entrainment, free-running circadian period (τ) from an ultradian forced desynchrony protocol] (10). Objective methods are more accurate and specific; however, they require strict laboratory or sleep clinic environments.

Approximately 50% of patients with multiple sclerosis (PWMS) experience sleep disorders, including insomnia, restless legs syndrome, and narcolepsy (21, 22). PWMS may present the extreme morning

chronotype, especially those with severe chronic fatigue (23). Additionally, PWMS experience difficulty falling asleep, complain of restless sleep, and wake up earlier in the morning than desired (21). Changes in the circadian rhythm may further promote the pathogenesis of multiple sclerosis (MS); specifically, decreased melatonin levels in PWMS are related to its insufficient antioxidative and anti-inflammatory effects, which results in the production of endogenous free radicals that may contribute to MS progression (24, 25). Sleep homeostasis in PWMS can be affected by various factors, including demyelinating lesions in sleep-wake centres, chronic fatigue, spasticity, nocturia, depression, anxiety, and the use of medications such as disease-modifying therapies or symptomatic treatment (26–28).

However, the prevalence of chronotypes among PWMS remains unclear (15, 22, 29, 30), including in Lithuania. Accordingly, we aimed to evaluate the sleep habits of Lithuanian PWMS and compare them with those of healthy controls; to determine the prevalence and spectrum of chronotypes; further, we aimed to compare depression, anxiety, and fatigue levels between PWMS and healthy controls with different chronotypes.

2 Materials and methods

This cross-sectional study was performed between December 2019 and March 2021. We included 101 PWMS from the Vilnius Multiple Sclerosis Center and 100 healthy individuals in the control group. A total of 210 completed questionnaires were collected; among them, 9 (4.29%) were rejected because of incompleteness and 201 (95.71%) were selected for further analysis. All PWMS were in remission, without relapse and corticosteroid or plasmapheresis treatment within ≥ 2 months. All patients had relapsing MS. The co-occurrence of other neurological or psychiatric diseases was considered as an exclusion criterion.

We used a general questionnaire created by the authors to collect sociodemographic data (age, sex, education, residence, and marital status) and information about sleep habits (self-reported sleep latency, night sleep duration, naps during the day; see [Supplementary S1](#)). Before distribution, this questionnaire was reviewed for simplicity, readability, and content. Further, the questionnaire was evaluated by an MS expert and pilot-tested in 10 patients to eliminate questions that were difficult to comprehend.

Additionally, we used MEQ (31) to evaluate chronotypes, the Hospital Anxiety and Depression Scale (HADS) (32) to evaluate anxiety and depression symptoms, and the Shortened Fatigue Questionnaire (SFQ) (33) to assess the severity of fatigue. Moreover, we asked the patients several questions about their disease, duration of MS, sleep environment, and habits. Neurological disability was assessed by the same neurologist using the Expanded Disability Status Scale (EDSS) (34). The chronotype was determined based on the total Horne–Östberg MEQ score, which ranges from 16 to 86 points. A score above 58 indicated the morning chronotype (59–69 points: moderate morning chronotype; 70–86: definitely morning chronotype), while a score below 42 indicated the evening chronotype (16–30 points: definitely evening chronotype; 31–41: moderate evening chronotype) (14, 31). A score of 42–58 points indicated the intermediate chronotype. HADS scores ≥ 8 points indicated the presence of anxiety or depression symptoms (32). The level of fatigue

was assessed by SFQ, which score varied from 4 (min) to 28 (max) points; an SFQ score ≥ 18 points indicated significant fatigue (33).

This study was approved by the Bioethics Committee of the Vilnius University Hospital Santaros Klinikos (No. 18-429). All participants provided written informed consent. Statistical analyses were performed using the IBM SPSS 19.0 program. The homogeneity of the groups was tested using Levene's test to assess the equality of variances. Homogeneous and non-homogeneous variances were described by the average and median, respectively. We used Student's *t*-test or Pearson's correlation for parametric variables and the Mann-Whitney U test or Spearman's correlation for non-parametric or non-homogenous continuous variables. One-way analysis of variance (ANOVA) was used for comparisons among the different chronotype groups. Two-way ANOVA, followed by *post hoc* (Least Significant Difference, LSD) testing, was conducted to analyse the effects of both MS and different chronotypes on parametric variables. Categorical variables were evaluated using the chi-squared test. The difference between variables was considered statistically significant if $p < 0.05$.

At the end of the study, all PWMS received sleep hygiene recommendations.

3 Results

3.1 Demographic and clinical characteristics

We included 130 (64.7%) and 71 (35.3%) women and men, respectively. The median age of all respondents was 39 [interquartile range (IQR) 20.75] years. Table 1 presents the sociodemographic characteristics of both groups. The average duration of MS was 9 (IQR 9.0) years for both men and women; the median EDSS score was 3 (IQR 2.0) (see Table 2).

3.2 Sleep habits

There were no significant differences in self-reported sleep latencies between PWMS (57.31 ± 5.45 min) and healthy controls (52.15 ± 5.39 min; $t(184) = -0.67$, $p = 0.503$). However, the median sleep latency in PWMS with clinically significant fatigue (SFQ ≥ 18) was 60 min (IQR 90), while that in healthy controls without fatigue symptoms was 30 min (IQR 40) ($U = 1,058$, $p = 0.014$). Sleep latency was positively correlated with HADS depression ($r(84) = 0.27$, $p = 0.012$) and anxiety ($r(84) = 0.3$, $p = 0.006$) scores in PWMS group.

There was no significant difference in self-reported night sleep duration between PWMS and healthy controls ($\chi^2(2, N = 201) = 2.67$, $p = 0.263$) (for details, see Figure 1). However, PWMS with clinically significant fatigue (SFQ ≥ 18) slept < 5 h per night, compared with healthy controls without fatigue symptoms (14.3% vs 2.4%; $\chi^2(2, N = 103) = 6.68$, $p = 0.036$). Among 38 (18.9%) respondents who tended to take naps during the day, 26 (68.42%) were PWMS ($\chi^2(1, N = 201) = 6.19$, $p = 0.013$) (see Figure 2).

3.3 Chronotypes

The average Horne-Östberg MEQ scores were 54 (IQR 15.0) and 53.5 (IQR 13.0) for PWMS and healthy controls, respectively, which were indicative of the intermediate chronotype. Most of all respondents, i.e., 115 (58.38%), belonged to the intermediate chronotype, and 51 (25.89%) – to the moderate morning type. The moderate evening and definitely morning types were less common (see Figure 3). None of the respondents belonged to the definitely evening chronotype. There was no significant difference in the distribution of chronotypes between PWMS and healthy controls ($\chi^2(3, N = 197) = 1$, $p = 0.802$), as well as between PWMS subgroups based on the EDSS score ($\chi^2(3,$

TABLE 1 Between-group comparisons of the sociodemographic characteristics.

	Sex		Age, years (IQR)	Education		Employment		Relationship status	
	Male	Female		University degree	Secondary school	Employed	Non-employed	In a relationship	Single
PWMS ($n = 101$)	46 (45.5%)	55 (54.5%)	39 (14)	68 (67.3%)	33 (32.7%)	82 (81.2%)	19 (18.8%)	67 (66.3%)	34 (33.7%)
HC ($n = 100$)	25 (25%)	75 (75%)	34 (25)	79 (79%)	21 (21%)	96 (96%)	3 (3%)	70 (70%)	30 (30%)
Total: $n = 201$	71 (35.3%)	130 (64.7%)	39 (20.75)	147 (73.1%)	54 (26.9%)	178 (88.6%)	22 (11.4%)	137 (68.2%)	64 (31.8%)
<i>p</i> value	$p^* = 0.002$		$p^{**} = 0.002$	$p^* < 0.001$		$p^* < 0.001$		$p^* = 0.293$	

HC, healthy controls; IQR, interquartile range; PWMS, patients with multiple sclerosis. *Chi-square test and **Mann-Whitney U test.

TABLE 2 MS characteristics; depression, anxiety, and fatigue symptoms in the PWMS group.

Data	Mean/median value	Descriptive statistics, IQR/ \pm SD
MS duration, years	9	9
EDSS score	3	2
HADS anxiety score	5.5	7
HADS depression score	5	6
SFQ score	22.43	± 0.57

EDSS, Expanded Disability Status Scale; HADS, Hospital Anxiety and Depression Scale; IQR, interquartile range; MS, multiple sclerosis; PWMS, patients with multiple sclerosis; SD, standard deviation; SFQ, Shortened Fatigue Questionnaire.

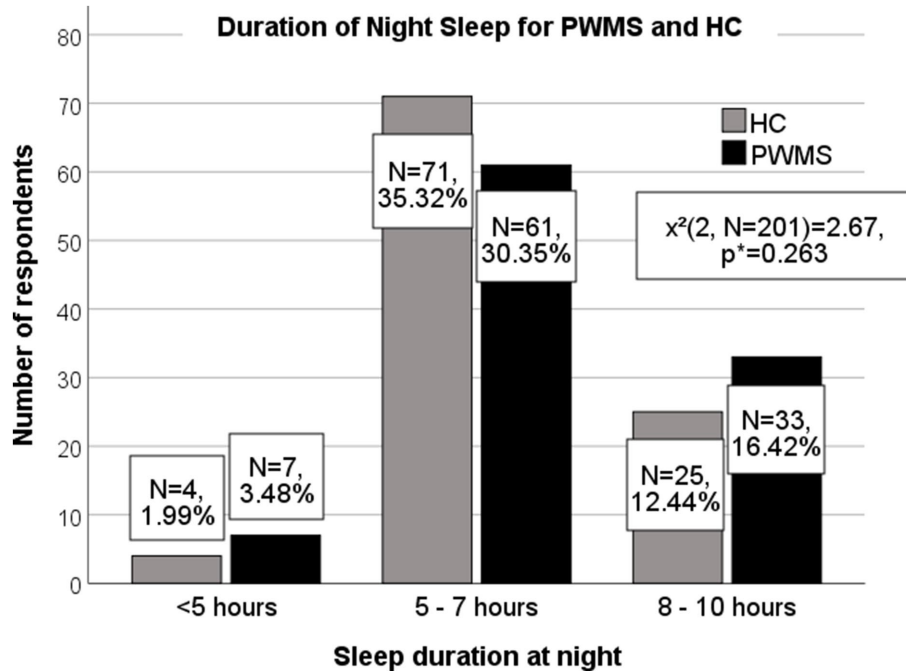


FIGURE 1 Duration of night sleep among PWMS and healthy controls. PWMS, patients with multiple sclerosis; HC, healthy controls. *Chi-square test.

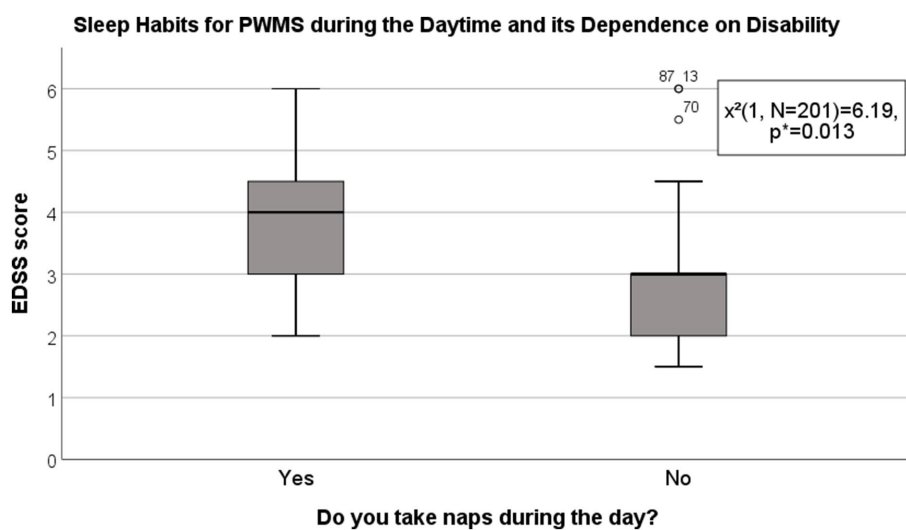


FIGURE 2 Sleep habits in PWMS during the daytime and their dependence on disability. EDSS, Expanded Disability Status Scale; PWMS, patients with multiple sclerosis. *Chi-square test.

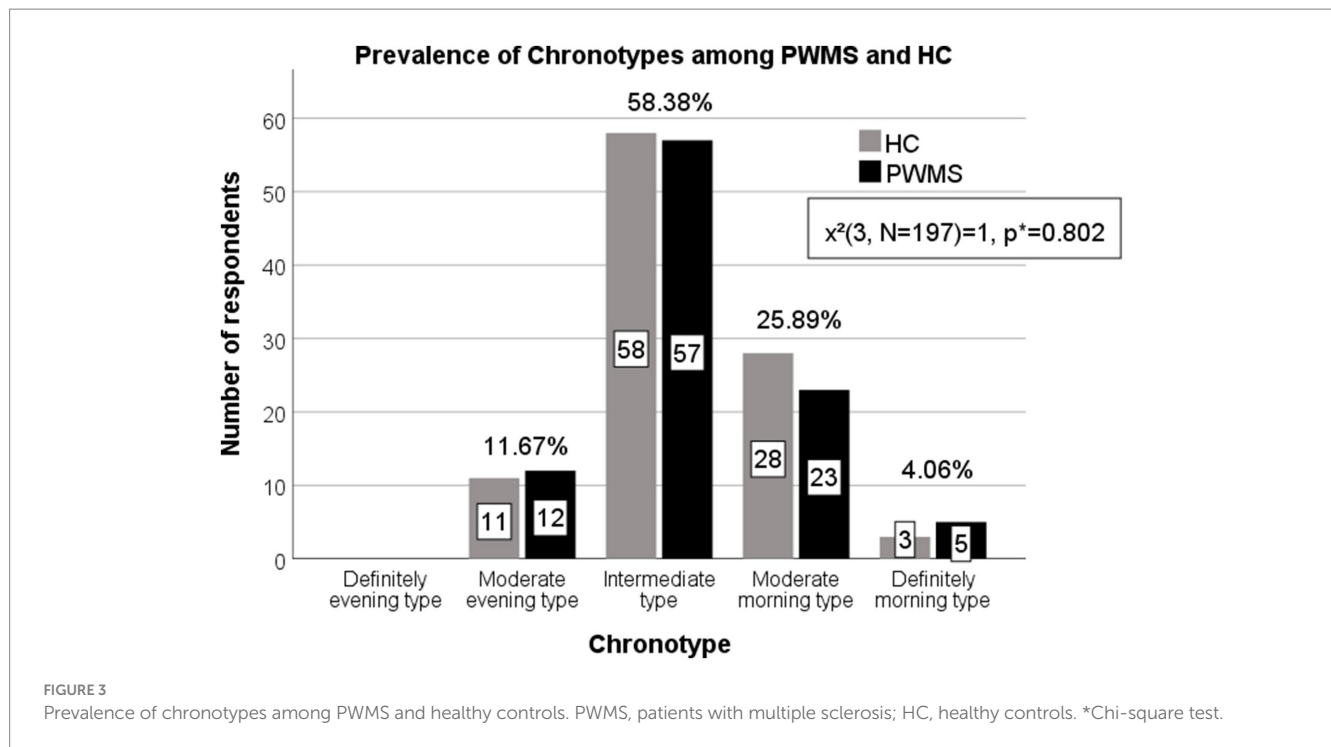
$N=97$) = 0.18, $p=0.982$). However, five (62.5%) of individuals with definitely morning chronotype belonged to PWMS group.

3.4 Symptoms of depression, anxiety, and fatigue among different chronotype groups

Higher average HADS depression scores were observed in both PWMS and healthy controls with the moderate evening (6.25 ± 0.71)

and intermediate chronotypes (5.1 ± 0.32) than in those with moderate morning chronotypes (3.86 ± 0.48) ($F(3, 189) = 3.28, p=0.022$). Higher average HADS anxiety scores (9.42 ± 0.86) were observed in respondents with evening chronotypes than in respondents with other chronotypes ($F(3, 189) = 5.59, p=0.001$). The average SFQ score was higher among PWMS (17.17 ± 6.24) than among healthy controls (12.84 ± 4.99) ($t(139) = -4.34, p < 0.001$).

A two-way ANOVA revealed a significant interaction between the effects of disease and specific chronotypes on the severity of fatigue



($F(3, 133)=3.31, p=0.022$). There were higher SFQ scores among PWMS with intermediate ($F(1, 133)=18.1, p<0.001$) and morning ($F(1, 133)=6.59, p=0.011$) chronotypes, comparing to healthy controls. Fatigue levels were higher in healthy controls with evening chronotypes ($F(3, 96)=7.62, p<0.001$); however, there was no significant difference in the average SFQ score between healthy controls and PWMS with evening chronotypes ($F(1, 133)=1.57, p=0.212$; see [Supplementary S2](#) and [Figures 4–6](#) for details).

4 Discussion

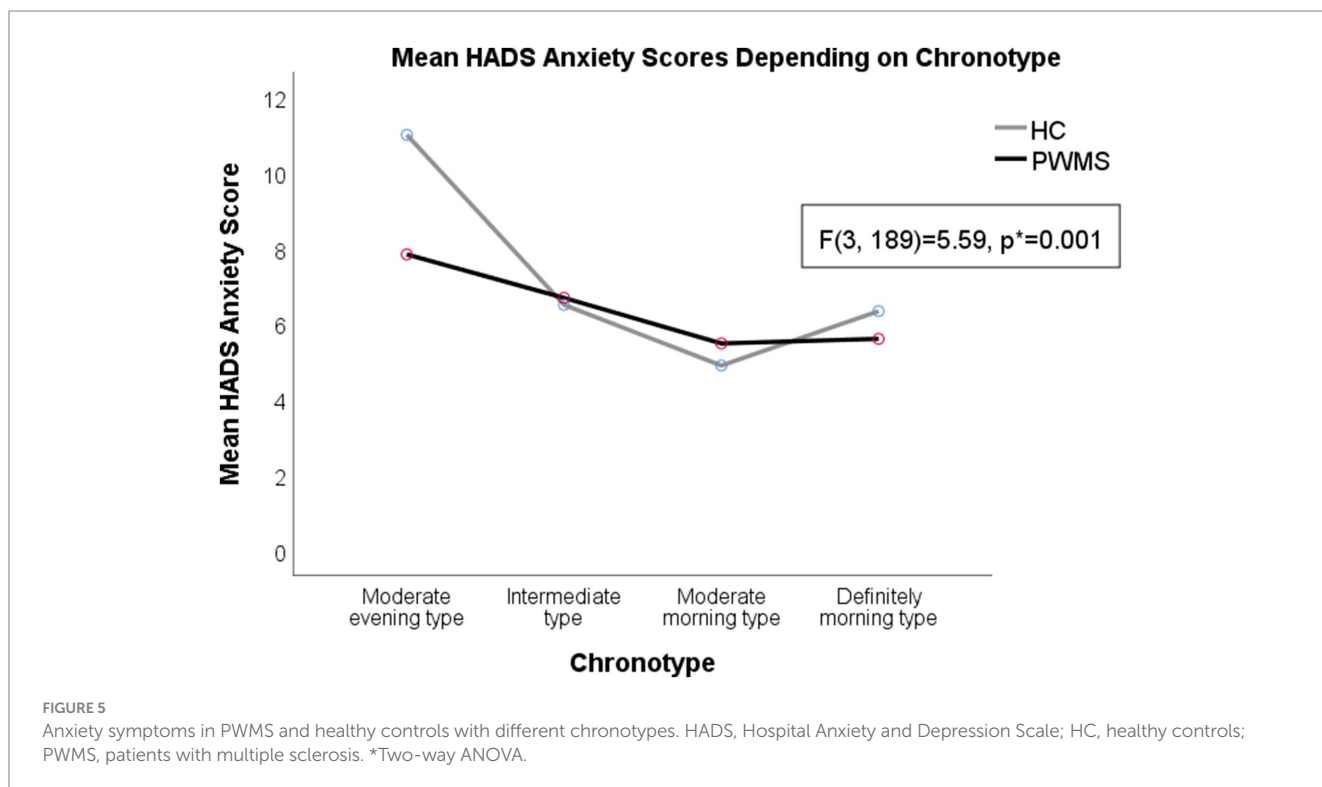
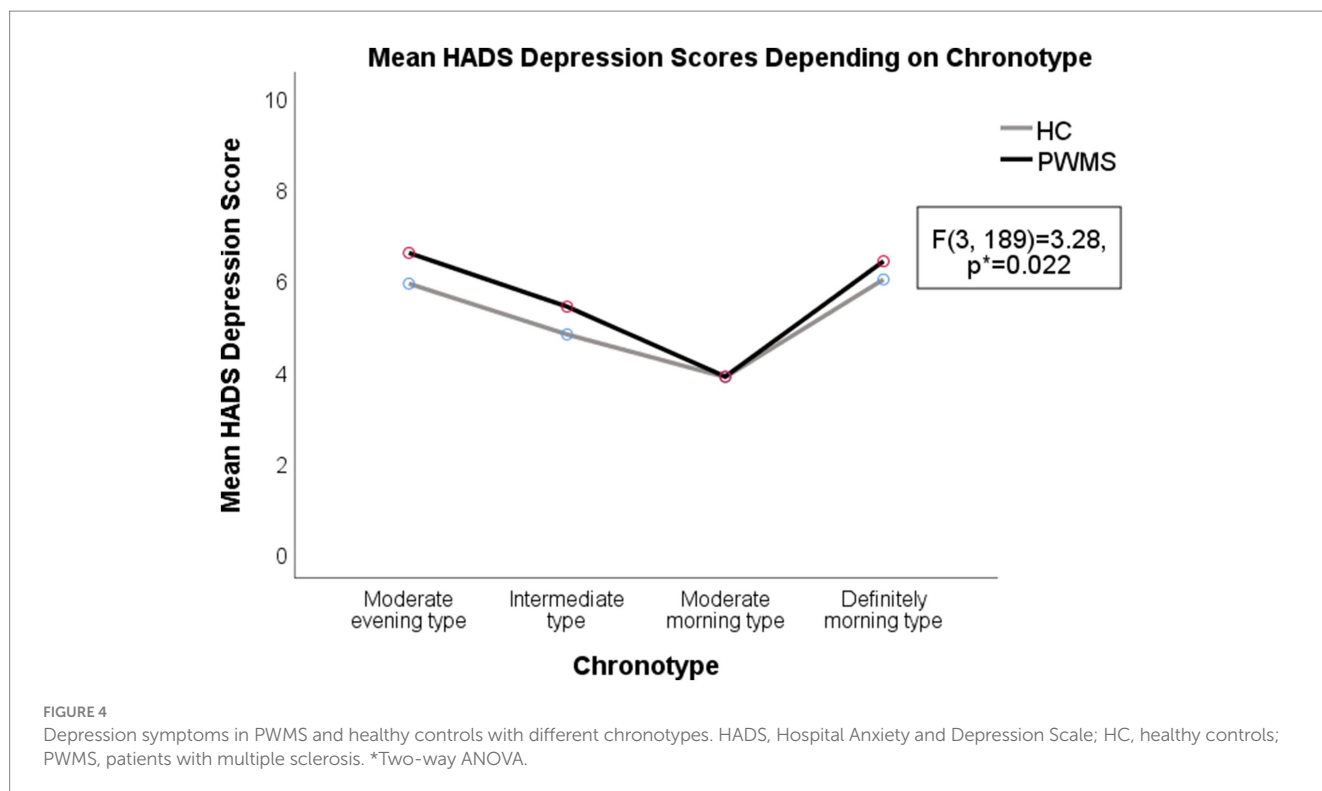
Our findings revealed prolonged sleep latencies in both healthy controls and PWMS; however, PWMS took more time to fall asleep despite having increased fatigue levels. Furthermore, among PWMS, fatigue levels were positively correlated with sleep latency. A meta-analysis of quantitative sleep parameters in healthy individuals indicated that an adult should fall asleep within 15–20 min ([35, 36](#)). Our findings are consistent with previous reports of difficulties in falling asleep among PWMS, especially those with severe fatigue, and that insufficient sleep length caused more tiredness during the daytime ([26, 37](#)). Furthermore, we observed prolonged sleep latencies among PWMS who presented depression and anxiety symptoms. It was previously suggested that prolonged sleep latency and shorter sleep duration are conditioned not by solitary factors, but by expressed fatigue, concomitant affective disorders, undiagnosed sleep disorders (such as insomnia, restless legs syndrome, etc.) and MS combination ([21](#)).

In our study, PWMS tended to take naps during the day more often than healthy controls; further, the tendency to nap during the daytime was related to the severity of MS disability. Decreased night sleep duration and quality are associated with sleepiness during the day; however, daytime naps can make it difficult to fall asleep in the

evening; therefore, sleep latency prolongs ([26](#)). Worsened night sleep quality among PWMS could be attributed to prolonged sleep latency as well as loss of sleep integrity (linked to spasticity-induced pain, nocturia, dysesthesia, and symptoms of restless legs syndrome); internal biological clock shifts to morning chronotypes [linked to demyelination in the SCN area ([23](#))]; use of antidepressives, which causes REM sleep phase disturbance; and other factors ([21, 23, 38](#)).

In our study, most PWMS belonged to the intermediate chronotype, which is consistent with the previous report by Silva et al. that the intermediate chronotype is found in approximately 60% of the adult population ([15](#)). However, other small studies have indicated that morning chronotypes are more common among PWMS than among healthy controls ([29, 30, 39](#)). In our study, only 28 (28.87%) PWMS showed the morning chronotypes (both moderate and definitely). Barun et al. reported that the morning chronotype was more common among patients with secondary progressive MS than among patients with relapsing-remitting or primary progressive MS ([30](#)). All the patients in our study had relapsing MS.

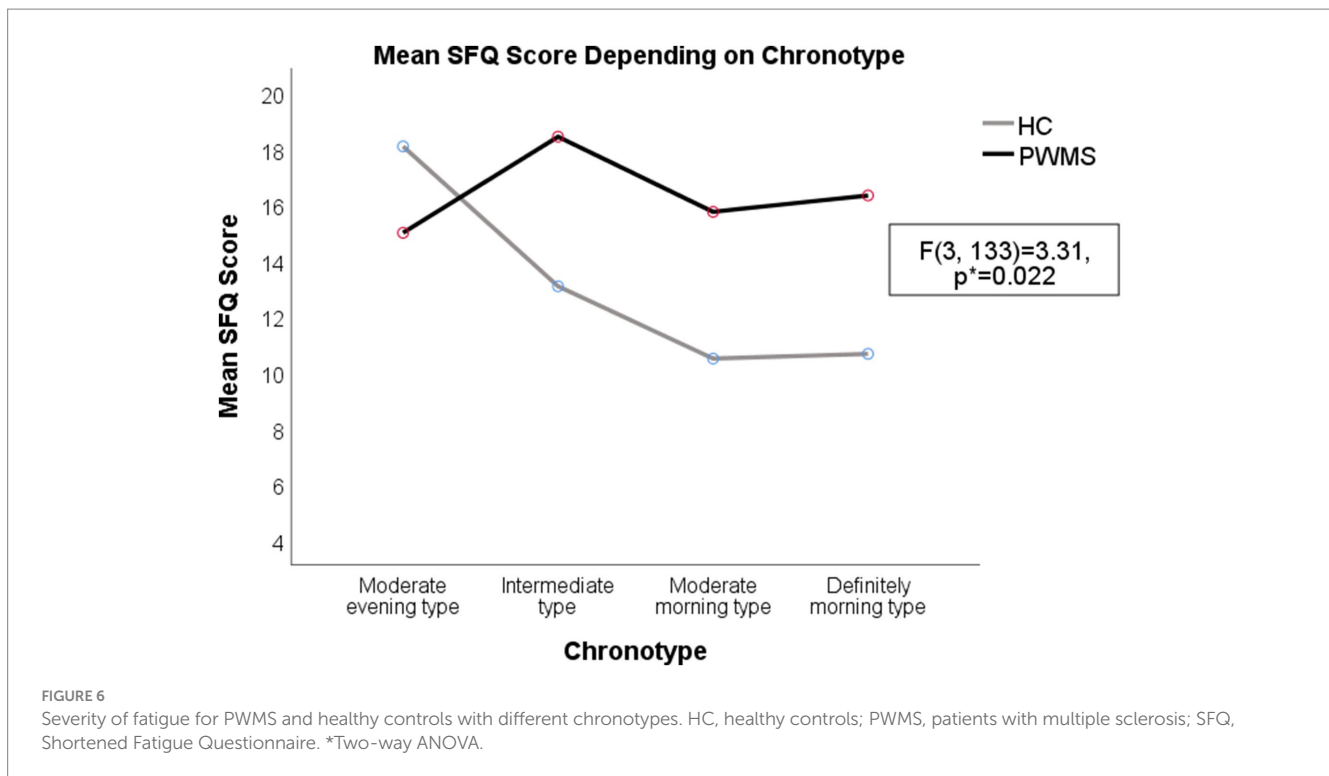
The evening chronotype for both PWMS and healthy controls, as well as the definitely morning chronotype for PWMS, were associated with both negative psychological (anxiety and depression symptoms) and physical (fatigue symptoms) effects. Our findings suggested that the moderate morning chronotype for both PWMS and HC was associated with lower depression and anxiety scores, comparing to other chronotypes. We think that moderate morning chronotype could harmonize with an individual's social life regimen better than the evening chronotypes. On the other hand, an Italian study suggested different explanation: higher early-morning motor activities in patients with relapsing-remitting MS could be attributed to increased activity of the hypothalamus–pituitary gland–adrenal cortex axis and higher morning cortisol levels in PWMS ([16, 39](#)). Their hypothesis might partly explain the higher prevalence of MS in geographic



regions that use summer time (or daylight saving time), since it may disturb the circadian rhythm balance (40).

Assessing PWMS chronotype may be useful in confirming patient's circadian preference, furthermore, asking questions about patient's complaints of insomnia, impairment of social, occupational, or other areas of functioning could lead a neurologist to the

suspicion of circadian rhythm disorder for PWMS. It was suggested that changes in the circadian rhythm may promote the pathogenesis of MS due to decreased melatonin levels and its insufficient antioxidative and anti-inflammatory effects (24, 25). Moreover, disturbances in sleep homeostasis among PWMS are related to impaired short-term memory and other cognitive functions,



attention deficits, increased disability, and comorbidities; therefore, it is important to detect, diagnose, and treat sleep disorders, including circadian, in PWMS (38, 41). Circadian rhythm disorders can be treated through cognitive behavioural therapy, lifestyle changes (e.g., social life and worktime adjustments to individual chronotypes), and sleep hygiene (regular sleep regimes, dark and quiet sleep environments, etc.). In severe cases, bright light therapy and melatonin or melatonin receptor agonists are recommended (28, 42, 43).

At the end of our study, all PWMS received sleep hygiene recommendations as the first step toward improving their sleep quality. Moreover, all our patients had an opportunity to consult with sleep medicine specialists and, if necessary, to undergo more elaborate sleep studies, for example, polysomnography (44). Additionally, PWMS with symptoms of depression and anxiety were offered to be referred to a psychiatrist's consultation in our Center.

This study had several limitations, including a moderate sample size and possible referral bias since our hospital is a tertiary referral centre. Therefore, future large-scale studies including more patients from tertiary referral centres in other Lithuanian cities are warranted. It is also important to include more patients with secondary progressive and other MS types in the future studies to search for differences in sleep habits and chronotypes according to MS type. Moreover, future studies could incorporate data from actigraphy and polysomnography, the former being important for evaluation of sleep and wake patterns in patients with circadian rhythm disorders, the latter being the gold standard for assessing sleep parameters; as well as objective methods for determining individual chronotypes, including dim-light melatonin onset.

5 Conclusion

This is the first Lithuanian study to evaluate the distribution of chronotypes among PWMS and healthy individuals. The intermediate chronotype was the most common chronotype among both PWMS and healthy controls. Despite significantly prolonged sleep latencies in PWMS, especially those experiencing fatigue symptoms, PWMS usually slept less at night and tended to take daytime naps. For all respondents, higher average HADS depression and anxiety scores were associated with a moderate evening chronotype. Fatigue was more commonly found for healthy controls with evening chronotype, while in PWMS group it was more prevalent for patients with intermediate and morning chronotypes. Future large-scale studies including more PWMS with secondary progressive and other MS types are needed.

Data availability statement

The original contributions presented in the study are included in the article/[Supplementary Material](#), further inquiries can be directed to the corresponding author.

Ethics statement

The studies involving humans were approved by Bioethics Committee of the Vilnius University Hospital Santaros Klinikos (no. 18-429). The studies were conducted in accordance with the local legislation and institutional requirements. The participants provided their written informed consent to participate in this study.

Author contributions

IJ: Conceptualization, Data curation, Formal analysis, Investigation, Methodology, Project administration, Software, Validation, Visualization, Writing – original draft, Writing – review & editing. ES-J: Conceptualization, Data curation, Formal analysis, Investigation, Methodology, Project administration, Resources, Supervision, Validation, Visualization, Writing – review & editing. RK: Conceptualization, Data curation, Investigation, Project administration, Resources, Supervision, Writing – review & editing. NG: Investigation, Software, Supervision, Validation, Writing – review & editing. IS: Investigation, Supervision, Validation, Writing – review & editing. JL: Investigation, Supervision, Validation, Writing – review & editing. GK: Formal analysis, Project administration, Supervision, Validation, Writing – review & editing. DJ: Formal analysis, Project administration, Supervision, Validation, Writing – review & editing.

Funding

The author(s) declare that no financial support was received for the research, authorship, and/or publication of this article.

References

- Zhu L, Zee PC. Circadian rhythm sleep disorders. *Neurol Clin.* (2012) 30:1167–91. doi: 10.1016/j.ncl.2012.08.011
- Abbott SM, Reid KJ, Zee PC. Circadian disorders of the sleep-wake cycle. M Kryger, T Roth and WC Dement, (Ed.) *Principles and practice of sleep medicine. 6th.* Philadelphia: Elsevier; (2017), 414–423
- Kalmbach DA, Schneider LD, Cheung J, Bertrand SJ, Kariharan T, Pack AI, et al. Genetic basis of Chronotype in humans: insights from three landmark GWAS. *Sleep.* (2016) 40:zsw048. doi: 10.1093/sleep/zsw048
- Cox KH, Takahashi JS. Circadian clock genes and the transcriptional architecture of the clock mechanism. *J Mol Endocrinol.* (2019) 63:R93–R102. doi: 10.1530/JME-19-0153
- Gooley JJ, Saper CB. Anatomy of the mammalian circadian system. M Kryger, T Roth and WC Dement, (Ed.) *Principles and practice of sleep medicine. 6th.* Philadelphia: Elsevier; (2017), 343–350
- The Nobel Prize in Physiology or Medicine, (2017). Available at: <https://www.nobelprize.org/prizes/medicine/2017/press-release/>
- Turek FW, Zee P. Introduction: master circadian clock and master circadian rhythm. M Kryger, T Roth and WC Dement, (Ed.) *Principles and practice of sleep medicine. 6th.* Philadelphia: Elsevier; (2017), 340–342
- Grosbellet E, Challet E. Central and peripheral circadian clocks. M Kryger, T Roth and WC Dement, (Ed.) *Principles and practice of sleep medicine. 6th.* Philadelphia: Elsevier; (2017), 396–404
- Arendt J. Biological rhythms: the science of chronobiology. *J R Coll Physicians Lond.* (1998) 32:27–35.
- Kantermann T, Eastman CI. Circadian phase, circadian period and chronotype are reproducible over months. *Chronobiol Int.* (2018) 35:280–8. doi: 10.1080/07420528.2017.1400979
- Bauducco S, Richardson C, Gradisar M. Chronotype, circadian rhythms and mood. *Curr Opin Psychol.* (2020) 34:77–83. doi: 10.1016/j.copsyc.2019.09.002
- Czeisler CA, Buxton OM. Human circadian timing system and sleep-wake regulation. M Kryger, T Roth and WC Dement, (Ed.) *Principles and practice of sleep medicine. 6th.* Philadelphia: Elsevier; (2017), 362–376
- Dolsen MR, Harvey AG. Dim light melatonin onset and affect in adolescents with an evening circadian preference. *J Adolesc Health.* (2018) 62:94–9. doi: 10.1016/j.jadohealth.2017.07.019
- Suh S, Ryu H, Kim S, Choi S, Joo EY. Using mid-sleep time to determine chronotype in young adults with insomnia-related symptoms. *Sleep Med Res.* (2017) 8:107–11. doi: 10.17241/smr.2017.00115
- Silva A, Simón D, Pannunzio B, Casaravilla C, Díaz Á, Tassino B. Chronotype-dependent changes in sleep habits associated with dim light melatonin onset in the Antarctic summer. *Clocks Sleep.* (2019) 1:352–66. doi: 10.3390/clocksleep1030029

Conflict of interest

The authors declare that the research was conducted in the absence of any commercial or financial relationships that could be construed as a potential conflict of interest.

Publisher's note

All claims expressed in this article are solely those of the authors and do not necessarily represent those of their affiliated organizations, or those of the publisher, the editors and the reviewers. Any product that may be evaluated in this article, or claim that may be made by its manufacturer, is not guaranteed or endorsed by the publisher.

Supplementary material

The Supplementary material for this article can be found online at: <https://www.frontiersin.org/articles/10.3389/fneur.2023.1298258/full#supplementary-material>

- Taylor BJ, Hasler BP. Chronotype and mental health: recent advances. *Curr Psychiatry Rep.* (2018) 20:59. doi: 10.1007/s11920-018-0925-8
- Abbott SM, Malkani RG, Zee PC. Circadian dysregulation in mental and physical health. M Kryger, T Roth and WC Dement, (Ed.) *Principles and practice of sleep medicine. 6th.* Philadelphia: Elsevier; (2017), 405–413
- Moon HJ, Cho YW. Eveningness chronotype is associated with sleep disturbances and depressive mood in Korean working adults. *Sleep Med.* (2019) 64:S265–6. doi: 10.1016/j.sleep.2019.11.742
- Chan NY, Zhang J, Tsang CC, Li AM, Chan JWY, Wing YK, et al. The associations of insomnia symptoms and chronotype with daytime sleepiness, mood symptoms and suicide risk in adolescents. *Sleep Med.* (2020) 74:124–31. doi: 10.1016/j.sleep.2020.05.035
- Simpkin CT, Jenni OG, Carskadon MA, Wright KP, Akacem LD, Garlo KG, et al. Chronotype is associated with the timing of the circadian clock and sleep in toddlers. *J Sleep Res.* (2014) 23:397–405. doi: 10.1111/jsr.12142
- Kotterba S. Schlafstörungen bei neurologischen Erkrankungen. *Nervenarzt.* (2015) 86:759–71. doi: 10.1007/s00115-014-4204-6
- Toscano VG, Coelho FM, Do Prado GF, Tufik S, EML DO. Sleep disorders in multiple sclerosis: a case-control study using the São Paulo epidemiologic sleep study (Episono) database. *Arq Neuropsiquiatr.* (2022) 80:822–30. doi: 10.1055/s-0042-1755233
- Najafi MR, Toghiani N, Etemadifar M, Haghighi S, Maghzi AH, Akbari M. Circadian rhythm sleep disorders in patients with multiple sclerosis and its association with fatigue: a case-control study. *J Res Med Sci.* (2013) 18:S71–3.
- Kern S, Geiger M, Paucke M, Kästner A, Akgün K, Ziemssen T. Clinical relevance of circadian melatonin release in relapsing-remitting multiple sclerosis. *J Mol Med.* (2019) 97:1547–55. doi: 10.1007/s00109-019-01821-w
- Ljubisavljevic S, Stojanovic I, Cvetkovic T, Vojinovic S, Stojanovic D, Stojanovic D, et al. Erythrocytes' antioxidative capacity as a potential marker of oxidative stress intensity in neuroinflammation. *J Neurol Sci.* (2014) 337:8–13. doi: 10.1016/j.jns.2013.11.006
- Gudesblatt M, Xian S, Bumstead B, Zarif M, Thotam S, Fafard L, et al. Multiple Sclerosis & Sleep Disorders: exploration of sleep latency and REM sleep latency in a community cohort of patients with multiple sclerosis who report fatigue (2015), *CMSC annual meeting*, Indianapolis, Indiana
- De Somma E, Jain RW, Poon KWC, Tresidder KA, Segal JP, Ghasemlou N. Chronobiological regulation of psychosocial and physiological outcomes in multiple sclerosis. *Neurosci Biobehav Rev.* (2018) 88:73–83. doi: 10.1016/j.neubiorev.2018.03.011
- Sakkas GK, Giannaki CD, Karatzaferi C, Manconi M. Sleep abnormalities in multiple sclerosis. *Curr Treat Options Neurol.* (2019) 21:4. doi: 10.1007/s11940-019-0544-7

29. Orellana C, Oheninger C, Gil J, Arbildi M, Martinez F. Chronotypes in an Uruguayan population affected by multiple sclerosis. *Sleep Med.* (2013) 14:e226. doi: 10.1016/j.sleep.2013.11.543
30. Barun B, Barusic AK, Bach I, Zadro I, Gabelic T, Adamec I, et al. Assessment of difference in chronotypes between patients with multiple sclerosis and healthy controls. *Mult Scler J.* (2013) 19:74–558.
31. Horne JA, Ostberg O. A self-assessment questionnaire to determine morningness-eveningness in human circadian rhythms. *Int J Chronobiol.* (1976) 4:97–110.
32. Stern AF. The hospital anxiety and depression scale. *Occup Med.* (2014) 64:393–4. doi: 10.1093/occmed/kqu024
33. Penson A, van Deuren S, Worm-Smeitink M, Bronkhorst E, van den Hoogen FHJ, van Engelen BGM, et al. Short fatigue questionnaire: screening for severe fatigue. *J Psychosom Res.* (2020) 137:110229. doi: 10.1016/j.jpsychores.2020.110229
34. Kurtzke JF. Rating neurologic impairment in multiple sclerosis: an expanded disability status scale (EDSS). *Neurology.* (1983) 33:1444–52. doi: 10.1212/WNL.33.11.1444
35. Allen SF, Elder GJ, Longstaff LF, Gotts ZM, Sharman R, Akram U, et al. Exploration of potential objective and subjective daily indicators of sleep health in normal sleepers. *Nat Sci Sleep.* (2018) 10:303–12. doi: 10.2147/NSS.S168841
36. Ohayon MM, Carskadon MA, Guilleminault C, Vitiello MV. Meta-analysis of quantitative sleep parameters from childhood to old age in healthy individuals: developing normative sleep values across the human lifespan. *Sleep.* (2004) 27:1255–73. doi: 10.1093/sleep/27.7.1255
37. Jonušaitė I, Sakalauskaitė-Juodeikienė E, Mameniškienė R, Kizlaitienė R. Cirkadinio ritmo ypatumų ir chronotipų ryšys su išsėtine skleroze: literatūros apžvalga. *Neurologijos Seminarai.* (2021) 25:130–7. doi: 10.29014/ns.2021.18
38. Whibley D, Goldstein C, Kratz AL, Braley TJ. A multidimensional approach to sleep health in multiple sclerosis. *Mult Scler Relat Disord.* (2021) 56:103271. doi: 10.1016/j.msard.2021.103271
39. Tonetti L, Camilli F, Giovagnoli S, Natale V, Lugaresi A. Circadian activity rhythm in early relapsing-remitting multiple sclerosis. *J Clin Med.* (2019) 8:2216. doi: 10.3390/jcm8122216
40. Gasperoni F, Turini P, Agostinelli E. A novel comprehensive paradigm for the etiopathogenesis of multiple sclerosis: therapeutic approaches and future perspectives on its treatment. *Amino Acids.* (2019) 51:745–59. doi: 10.1007/s00726-019-02718-1
41. Braley TJ, Kratz AL, Kaplish N, Chervin RD. Sleep and cognitive function in multiple sclerosis. *Sleep.* (2016) 39:1525–33. doi: 10.5665/sleep.6012
42. Sakalauskaitė-Juodeikienė E, Masaitienė R. Naujas nemigos apibrėžimas, etiopatogenezė, diagnostikos ir gydymo algoritmas. *Neurologijos seminarai.* (2018) 22:164–73. doi: 10.29014/ns.2018.20
43. Voggenberger L, Böck M, Moser D, Lorbeer G, Altmann P, Leutmezer F, et al. Bright light therapy as a non-pharmacological treatment option for multiple sclerosis-related fatigue: a randomized sham-controlled trial. *Multiple Sclerosis J Exp Transl Clin.* (2022) 8:205521732211332. doi: 10.1177/20552173221133262
44. Pajėdienė E, Matačiūnienė D, Sakalauskaitė-Juodeikienė E. Practice of sleep medicine in Lithuania. HP Attarian, MLM Coussa-Koniski and AM Sabri (Eds.). *The practice of sleep medicine around the world: Challenges, knowledge gaps and unique needs.* Singapore: Bentham Books; (2023), 374–389