



Vestibular Function in Children and Adults Before and After Unilateral or Sequential Bilateral Cochlear Implantation

Ruirui Guan, Yanqi Wang, Sasa Wu, Bo Zhang, Jingwu Sun*, Xiaotao Guo* and Jiaqiang Sun*

Department of Otolaryngology Head and Neck Surgery, The First Affiliated Hospital of USTC, Division of Life Sciences and Medicine, University of Science and Technology of China, Hefei, China

OPEN ACCESS

Edited by:

Anandhan Dhanasingh,
MED-EL, Austria

Reviewed by:

Nora Weiss,
University Hospital Rostock, Germany
Abdulrahman Hagr,
King Saud University, Saudi Arabia
Manohar Bance,
University of Cambridge,
United Kingdom

*Correspondence:

Jingwu Sun
sunjingwuustc@163.com
Xiaotao Guo
gxt2012@mail.ustc.edu.cn
Jiaqiang Sun
sunjq0605@126.com

Specialty section:

This article was submitted to
Neuro-Otology,
a section of the journal
Frontiers in Neurology

Received: 03 March 2021

Accepted: 06 April 2021

Published: 29 April 2021

Citation:

Guan R, Wang Y, Wu S, Zhang B,
Sun J, Guo X and Sun J (2021)
Vestibular Function in Children and
Adults Before and After Unilateral or
Sequential Bilateral Cochlear
Implantation.
Front. Neurol. 12:675502.
doi: 10.3389/fneur.2021.675502

Background: Cochlear implantation (CI) helps patients with severe or profound sensorineural hearing loss (SNHL) restore hearing and speech abilities. However, some patients exhibit abnormal vestibular functions with symptoms such as dizziness or balance disorders, after CI. Whether age at CI and CI approach (unilateral or sequential bilateral) affect vestibular functions in users with cochlear implants remains unclear.

Objectives: To investigate the vestibular functions in children and adults before and after unilateral or sequential bilateral CI.

Materials and Methods: Thirty-seven patients with severe or profound SNHL who were candidates for a first- or second-side CI were divided into three groups: first-side CI-implanted adults (≥ 18 years), first-side CI-implanted children (6–17 years), and second-side CI-implanted children (6–17 years). All cases were implanted with the round window approach to minimize damage to the intra-cochlear structures. The caloric test, vestibular evoked myogenic potential (VEMP) test, video head impulse test (vHIT), Dizziness Handicap Inventory (DHI), Pediatric Vestibular Symptom Questionnaire (PVSQ), and audiometric tests were performed before and 1 month after CI.

Results: The abnormal rates of caloric test and VEMP test after CI in the first-side CI-implanted adults and children significantly increased compared with those before CI. The pre-implantation VEMP test showed significantly higher abnormal rates between first- and second-side CI-implanted children. No other significant differences of abnormal rates between first- and second-side CI-implanted children or between first-side CI-implanted adults and children were found. In second-side CI-implanted children, PVSQ scores significantly increased at day 3 post-implantation but decreased at day 30.

Conclusion: CI has a negative effect on the results of caloric and VEMP tests, but not on vHIT, indicating that the otolith and low-frequency semicircular canal (SCC) are more vulnerable to damage from CI. The alterations of vestibular functions resulting from CI surgery may be independent of age at CI and CI approach (unilateral or sequential bilateral). Long-term impacts on the vestibular function from CI surgery, as well as the chronic electrical stimulation to the cochlea, are still to be investigated.

Keywords: cochlear implant, vestibular function, children, adults, unilateral implantation, sequential bilateral implantation

INTRODUCTION

Cochlear implantation (CI) is successfully used as a treatment option for restoring hearing in patients with severe or profound sensorineural hearing loss (SNHL). While CI restores hearing, in some patients, it negatively affects vestibular functions, resulting in dizziness, or balance disorders. In 1971, Michelson first reported that a CI patient developed vertigo and tinnitus symptoms after CI surgery (1). Terry et al. analyzed delayed complications after CI in a review capturing 88 studies and found that vestibular complications were the most common phenomenon (2). Sokolov et al. reported that deaf children are more likely to have vestibular disorders (3). Modifications and areflexia of vestibular functions have been previously reported (4). The CI electrode stimulates the spiral ganglion in the central modiolus trunk, which affects the stability of the endolymphatic environment, possibly resulting in histopathological changes after CI.

With the popularization of CI, vestibular dysfunction has attracted much attention recently. Most studies, however, have focused on vestibular functions in adults rather than in children because of the often-poor co-operation and unreliable responses of children during testing. The effect of CI on vestibular functions in children remains unclear. The advantages of binaural hearing through bilateral CI are widely accepted, and more patients choose bilateral CI. Simultaneous bilateral implantation may cause more risks to patients compared with sequential bilateral implantation from the surgical point of view (5). But considering the health economics and the process of learning to use CI, simultaneous bilateral CI is considered better (6). Clinical studies showed that the incidence of vertigo after CI was 2–35%, but the incidence of vestibular dysfunction was 20–80% (5, 7, 8). The results of subjective and objective tests for evaluating vestibular function seem inconsistent.

Obviously, the incidence of vestibular dysfunction after CI changes greatly, and the reasons are multifactorial. In this study, to investigate the effects of age at CI and CI approach (unilateral or sequential bilateral) on vestibular functions, we evaluated vestibular functions of five vestibular end organs (sacculle, utricle, and semicircular canals) in children and adults before and after unilateral or sequential bilateral CI.

MATERIALS AND METHODS

Patients

In this study, 37 patients (23 males and 14 females) with bilateral severe or profound SNHL receiving CI in our hospital from October 2020 to January 2021 were included. No patients had inner ear malformations and all had normal eardrums and middle ear pressures before and 1 month after CI. Patients had no pathological features of the vestibular, oculomotor or neuromuscular system except for one adult patient with Meniere's disease. Children in this study were more than 6 years old. They had good comprehension and expression abilities and could clearly describe their vertigo symptoms. Each patient was implanted with a 28 mm long electrode array (FLEX28) through the round window (RW) approach to minimize damage to the

intra-cochlear structures. The implanted devices were produced by MED-EL (Innsbruck, Austria). No serious complications after CI surgery were found. Each patient underwent audiometric tests (tympanometry and pure tone audiometry) and a series of vestibular function tests 1–3 days before surgery and 29–37 days after surgery. The vestibular function tests included the caloric test, vestibular evoked myogenic potential (VEMP) test, video head impulse test (vHIT), Dizziness Handicap Inventory (DHI) for adults, and Pediatric Vestibular Symptom Questionnaire (PVSQ) for children.

Patients were divided into three groups according to the age at implantation and the first- or second-side CI: first-side CI-implanted adults (≥ 18 years, $n = 15$), first-side CI-implanted children (6–17 years, $n = 10$), and second-side CI-implanted children (6–17 years, $n = 12$). First-side CI-implanted adults and children received a unilateral CI, and second-side CI-implanted children received a sequential bilateral CI. The mean (\pm SD) ages of first-side CI-implanted adults, first-side CI-implanted children, and second-side CI-implanted children were 37.46 ± 15.32 years (ranging from 18 to 70 years), 10.00 ± 4.24 years (ranging from 6 to 16 years), and 8.92 ± 4.11 years (ranging from 6 to 17 years), respectively. The pure tone averages (PTAs) at 500 Hz, 1, 2, and 4 kHz for all patients were 102.3 ± 13.65 dB HL (left side) and 102.1 ± 20.89 dB HL (right side), ranging from 75 to 120 dB HL. The demographic information of patients is listed in **Table 1**. The protocols and experimental procedures in the present study were reviewed and approved by the Anhui Provincial Hospital Ethics Committee. Each participant or his/her guardians had filled out informed consent carefully before the experiment.

Vestibular Function Tests

Caloric Test

The caloric test was employed to evaluate the horizontal semicircular canal (SCC). The patients took supine position and raised their head to 30 degrees with a pillow. The right and left ears of the patients were stimulated with cool air (24°C) and warm air (50°C) by using an air caloric irrigator system (Micromedical Technologies Inc., Chatham, IL, USA). We used videonystagmography (VNG) (VisualEyes™ VNG, Micromedical Technologies Inc., USA) to record horizontal eye movements during the test. The subjects were perfused four times for 60 s. After perfusion, the nystagmus was observed for 60 s. Unilateral Weakness (UW) was calculated using the maximal slow phase eye velocity: $UW = \frac{|(RC + RW) - (LC + LW)|}{(RC + RW + LC + LW)} \times 100\%$, where RC = right cool, RW = right warm, LC = left cool, and LW = left warm. $UW > 25\%$ was considered abnormal (9).

VEMP

VEMP was recorded by using a SmartEP equipment (Intelligent Hearing Systems, Miami, FL, USA). All patients were tested with air-conducted tone bursts of 105 dB nHL at 500 Hz administered by plug-in earphones. The resistance of the electrode was < 5 k Ω . For ocular VEMP (oVEMP), the first negative waveform is N1 (at the latency of about 10 ms) and the first positive waveform is P1 (at the latency of about 15 ms). For cervical

TABLE 1 | The demographic information of participants with cochlear implants.

Subject	Gender	Etiology	Age at first/second CI (years)	First/second implanted side	First/second Implant type
First-side CI-implanted adults					
1	M	Hereditary	22/	R/	SONATAti100
2	M	Unknown	33/	L/	SONATAti100
3	F	Unknown	18/	R/	CONCERTOMi1000
4	M	Meniere's disease	70/	R/	CONCERTOMi1000
5	F	Unknown	56/	R/	CONCERTOMi1000
6	M	Unknown	19/	R/	SONATAti100
7	M	Noise induced	46/	R/	CONCERTOMi1000
8	F	Unknown	40/	L/	SONATAti100
9	M	Noise induced	44/	L/	CONCERTOMi1000
10	F	Sudden deafness	48/	L/	CONCERTOMi1000
11	M	Unknown	20/	R/	CONCERTOMi1000
12	F	Unknown	43/	R/	CONCERTOMi1000
13	M	Drug-induced	24/	R/	CONCERTOMi1000
14	F	Sudden deafness	48/	R/	CONCERTOMi1000
15	M	Unknown	31/	L/	SONATAti100
First-side CI-implanted children					
1	M	Unknown	16/	R/	CONCERTOMi1000
2	M	Hereditary	6/	L/	CONCERTOMi1000
3	F	Unknown	8/	R/	SONATAti100
4	F	Unknown	6/	R/	CONCERTOMi1000
5	M	Hereditary	8/	L/	CONCERTOMi1000
6	M	Viral infection	13/	R/	SONATAti100
7	M	Hereditary	16/	L/	CONCERTOMi1000
8	M	Viral infection	6/	R/	CONCERTOMi1000
9	F	Unknown	14/	L/	SONATAti100
10	M	Viral infection	7/	R/	CONCERTOMi1000
Second-side CI-implanted children					
1	F	Unknown	1/6	R/L	SONATAti100/CONCERTOMi1000
2	M	Viral infection	9/12	L/R	CONCERTOMi1000 (Bi)
3	M	Drug-induced	1/6	R/L	SONATAti100 (Bi)
4	M	Unknown	1/6	L/R	SONATAti100 (Bi)
5	M	Unknown	10/16	R/L	CONCERTOMi1000 (Bi)
6	F	Hereditary	3/8	L/R	CONCERTOMi1000 (Bi)
7	F	Unknown	3/6	R/L	CONCERTOMi1000 (Bi)
8	M	Viral infection	10/11	R/L	CONCERTOMi1000 (Bi)
9	F	Unknown	2/9	R/L	CONCERTOMi1000 (Bi)
10	M	Unknown	1/7	R/L	SONATAti100 (Bi)
11	M	Unknown	2/8	R/L	SONATAti100/CONCERTOMi1000
12	M	Hereditary	16/17	R/L	SONATAti100 (Bi)

CI, cochlear implant; F, female; M, male; L, left; R, right; Bi, bilateral.

VEMP (cVEMP), the first positive waveform is P1 (at the latency of about 13 ms) and the first negative wave is N1 (at the latency of about 23 ms). Whereas, oVEMP can be used to evaluate the function of the utricle and the superior vestibular nerve pathway, cVEMP is mainly used to evaluate the function of the saccule and the inferior vestibular nerve pathway. The amplitude asymmetry ratio (AR) was calculated as follows: $|(right\ amplitude - left\ amplitude)| / (right\ amplitude + left\ amplitude) \times 100\%$. The response was regarded as abnormal for $AR > 0.34$ or no repeatable waveforms (10).

vHIT

All subjects were tested for vHIT by using the EyeSeeCam system (EyeSeeCam, Interacoustics Inc., Assens, Denmark) to record the gain of vestibulo-ocular reflex (VOR) of each SCC. The subjects took seated position and wore a light glass, which was about 1–1.5 m away from the fixed point. After the calibration according to the software requirements, three pairs of semicircular canals in the horizontal and vertical directions were tested. During the test, subjects were asked to keep their eyes fixed in front of the target and relax their necks. At least 10 impulses with peak velocity

ranging from 150 to 250/s were collected from each canal. In our study, the vHIT results were classified based on the gain of vHIT. We classified abnormal values as follows: the gain of the horizontal canal (HC) was <0.8 ; the gain of the anterior canal (AC) or posterior canal (PC) was <0.7 (11). We measured the gains of both ears at the same time and regarded the vestibular function as abnormal if either ear showed an abnormal value.

Vertigo Disorders Scale Assessment

The DHI was used to evaluate the impact of dizziness or vertigo on the quality of life for adult patients. DHI includes 25 items: 9 items of emotion (E), 9 items of function (F), and 7 items of physical (P). Each item has three options, namely, “yes,” “sometimes,” and “none,” which are scored as 4 points, 2 points, and 0 points, respectively. The maximum score is 100 points. 0 points indicates that vertigo symptoms have no effect on patients. The higher the score, the more serious the impact of vertigo on patients.

The PVSQ is a measure of the severity of vestibular symptoms (dizziness, instability) in children ages 6–17 years old. There are 11 questions in this questionnaire (10 multiple-choice questions, 1 subjective question). In this study, only 10 multiple-choice questions were selected. Each question has four options. Each item is rated on a scale of 0 (never) to 3 (most of the time) (12). The answer to each item of the PVSQ was obtained from the guardians by full communication between children and guardians.

Data Processing and Analysis

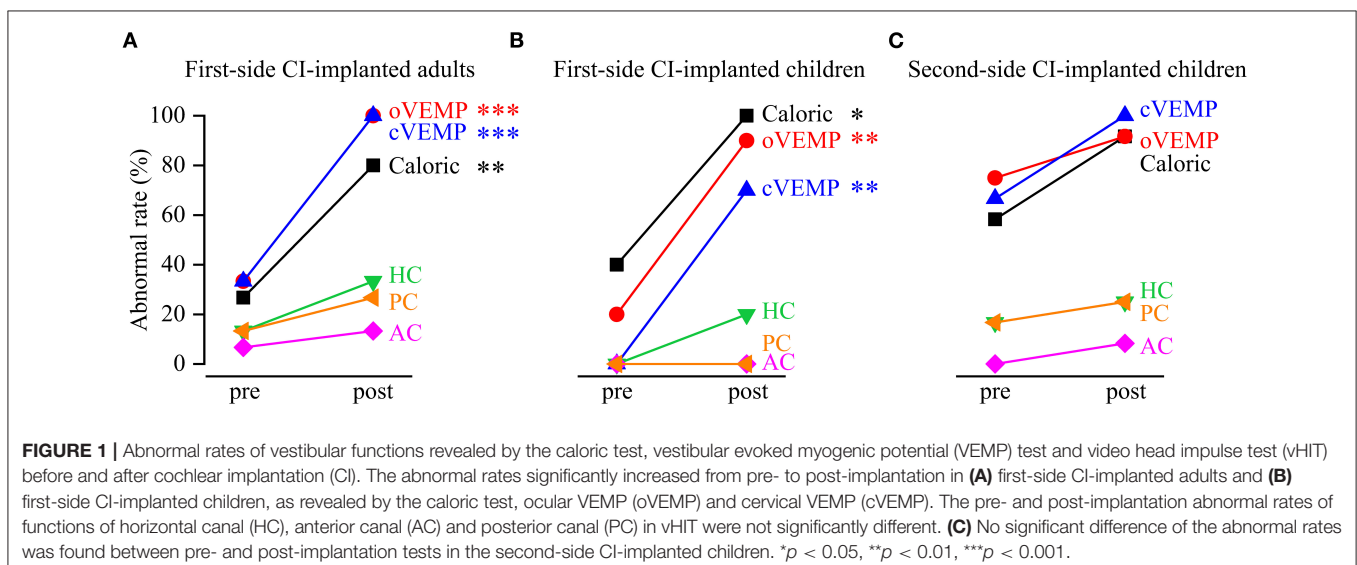
The ratio of patients with abnormal vestibular functions to total subjects in each group was regarded as the abnormal rate. Because the pre-implantation abnormal rates of vestibular functions for different groups may be different, we also assessed the growth rate which was calculated by subtracting the pre-implantation abnormal rate from the post-implantation abnormal rate. We used the SPSS software package (version 17.0 for Windows;

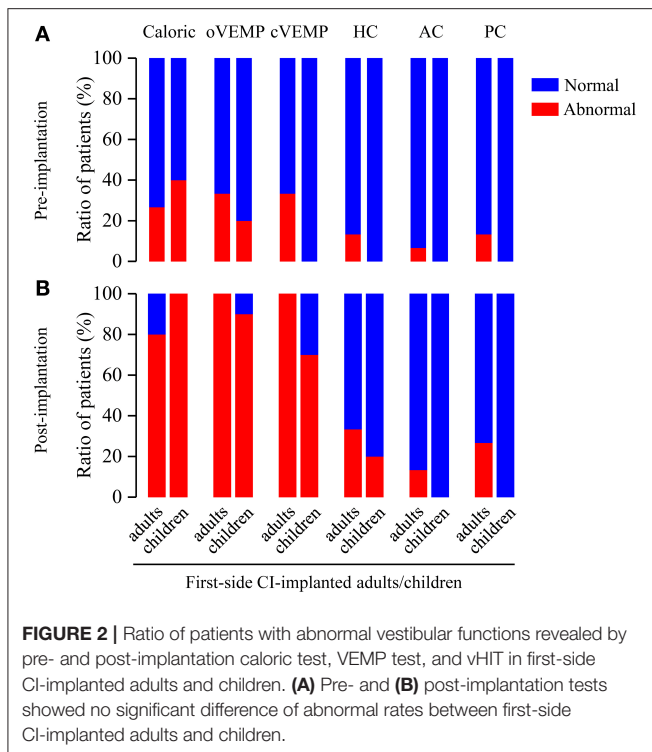
SPSS Inc., Chicago, IL, USA) to analyze the data. Because of the small sample size, the Fisher's exact test was used to assess the differences of abnormal rates and growth rates. Among all patients, 12 first-side CI-implanted adults, 8 first-side CI-implanted children, and 9 second-side CI-implanted children completed vertigo disorders scale assessment before implantation, at day 3 after implantation, and at day 30 after implantation. The difference of DHI or PVSQ scores among three periods for each group was assessed by using a non-parametric Friedman test, and the difference of PVSQ scores between first- and second-side CI-implanted children at each period was further assessed by using a non-parametric Mann-Whitney *U*-test. If the DHI or PVSQ scores were significantly different among three periods, a Wilcoxon signed rank test was further used to assess scores between any two periods. For hypothesis testing, $p < 0.05$ was considered significantly different.

RESULTS

Abnormal Rates of Vestibular Functions Before and After CI

The caloric test and the VEMP test showed that the abnormal rates significantly increased from pre- to post-implantation in the first-side CI-implanted adults (caloric test: pre: 26.67%, post: 80%, $p = 0.009$; oVEMP: pre: 33.33%, post: 100%, $p < 0.001$; cVEMP: pre: 33.33%, post: 100%, $p = 0.001$) and in the first-side CI-implanted children (caloric test: pre: 40%, post: 100%, $p = 0.011$; oVEMP: pre: 20%, post: 90%, $p = 0.005$; cVEMP: pre: 0%, post: 70%, $p = 0.003$) (Figure 1). For the second-side CI-implanted children, the abnormal rate was higher in post- than in pre-implantation caloric test (pre: 58.33%, post: 91.67%, $p = 0.155$) and VEMP test (oVEMP: pre: 75%, post: 91.67%, $p = 0.590$; cVEMP: pre: 66.67%, post: 100%, $p = 0.093$), but the difference was not significant. The vHIT test showed no significant difference between pre- and post-implantation abnormal rates in the first-side CI-implanted adults (HC: pre:



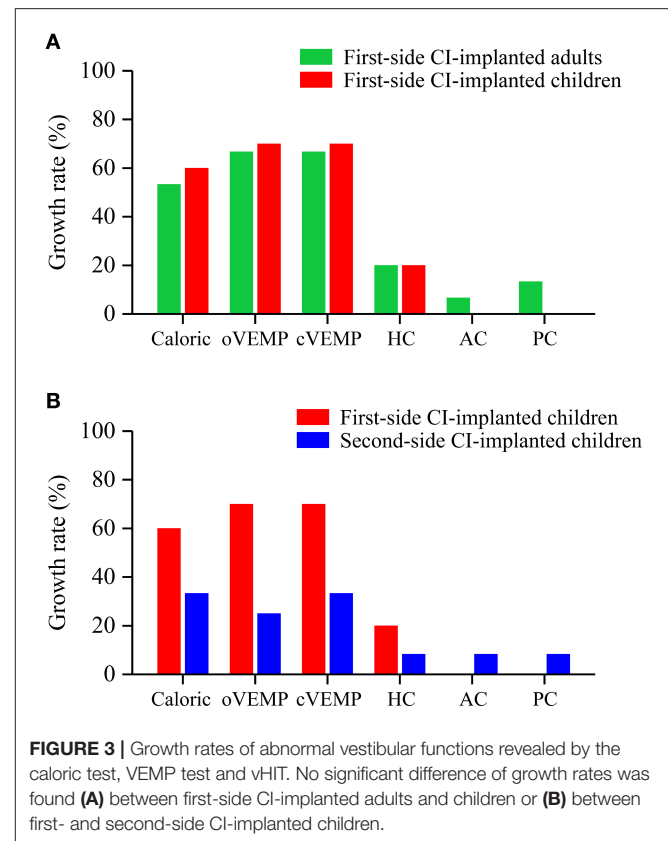


13.33%, post: 33.33%, $p = 0.390$; AC: pre: 6.67%, post: 13.33%, $p > 0.999$; PC: pre: 13.33%, post: 26.67%, $p = 0.651$), in the first-side CI-implanted children (HC: pre: 0%, post: 20%, $p = 0.474$; AC: pre: 0%, post: 0%, $p > 0.999$; PC: pre: 0%, post: 0%, $p > 0.999$) or in the second-side CI-implanted children (HC: pre: 16.67%, post: 25%, $p > 0.999$; AC: pre: 0%, post: 8.33%, $p > 0.999$; PC: pre: 16.67%, post: 25%, $p > 0.999$).

Abnormal Rates of Vestibular Functions Between First-Side CI-Implanted Adults and Children

To assess the effect of age at CI on the vestibular functions, we analyzed the differences of abnormal rates between first-side CI-implanted adults and children. The pre-implantation calorific test, VEMP test and vHIT showed no significant difference of the abnormal rates between first-side CI-implanted adults and children (caloric test: 26.67 vs. 40%, $p = 0.667$; oVEMP: 33.33 vs. 20%, $p = 0.659$; cVEMP: 33.33 vs. 0%, $p = 0.061$; HC: 13.33 vs. 0%, $p = 0.500$; AC: 6.67 vs. 0%, $p > 0.999$; PC: 13.33 vs. 0%, $p = 0.500$) (Figure 2). Furthermore, no significant difference of the post-implantation abnormal rates between these two groups was found (caloric test: 80 vs. 100%, $p = 0.250$; oVEMP: 100 vs. 90%, $p = 0.400$; cVEMP: 100 vs. 70%, $p = 0.052$; HC: 33.33 vs. 20%, $p = 0.659$; AC: 13.33 vs. 0%, $p = 0.500$; PC: 26.67 vs. 0%, $p = 0.125$, respectively).

The growth rates in the first-side CI-implanted adults and children were 53 and 60% for caloric test, 67 and 70% for oVEMP, 67 and 70% for cVEMP, 20 and 20% for HC, 6.67 and 0% for AC, and 13.33 and 0% for PC, respectively (Figure 3A). No significant

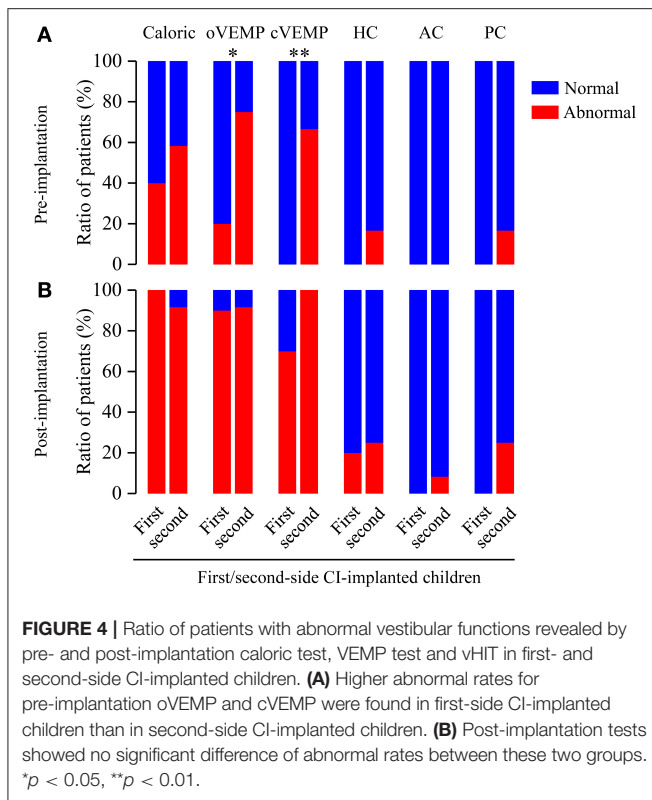


difference of the growth rates between these two groups was found ($p > 0.05$).

Abnormal Rates of Vestibular Functions Between First- and Second-Side CI-Implanted Children

To further assess the effect of CI approach on the vestibular functions, we analyzed the differences of abnormal rates between first- and second-side CI-implanted children. Before CI, the VEMP test showed significant differences of the abnormal rates between first- and second-side CI-implanted children (oVEMP: 20 vs. 75%, $p = 0.030$; cVEMP: 0 vs. 66.67%, $p = 0.002$, respectively) (Figure 4). No other significant difference of pre- (caloric test: 40 vs. 58.33%, $p = 0.670$; HC: 0 vs. 16.67%, $p = 0.481$; AC: 0 vs. 0%, $p > 0.999$; PC: 0 vs. 16.67%, $p = 0.481$) or post-implantation (caloric test: 100 vs. 91.67%, $p > 0.999$; oVEMP: 90 vs. 91.67%, $p > 0.999$; cVEMP: 70 vs. 100%, $p = 0.078$; HC: 20 vs. 25%, $p > 0.999$; AC: 0 vs. 8.33%, $p > 0.999$; PC: 0 vs. 25%, $p = 0.221$) abnormal rates between these two groups was found.

The growth rates in the first- and second-side CI-implanted children were 60 and 33% for caloric test, 70 and 25% for oVEMP, 70 and 33% for cVEMP, 20 and 8.33% for HC, 0 and 8.33% for AC, and 0 and 8.33% for PC, respectively (Figure 3B). No significant difference of the growth rates between these two groups was found ($p > 0.05$).



patients. Vertigo is one of the most common complications (13). The vestibule and the cochlea share a continuous membranous structure and have similar receptor cells. However, the mechanism underlying vestibular symptoms caused by CI remains unclear. A histopathological study of temporal bone specimens of CI users suggests that cochlear hydrops accompanied by saccular collapse may cause attacks of vertigo with delayed onset (14). Therefore, pre-operative and post-operative assessment of vestibular functions can be made clinically mandatory.

The abnormal rates in the caloric and VEMP tests greatly increased from pre- to post-implantation for first-side CI-implanted adults and children, indicating the negative effect of CI surgery on vestibular functions. Stultiens et al. found deteriorated vestibular functions after CI using the caloric test (15). The caloric test is based on thermal conductance which may alter after CI surgery (16) and the VEMP response may be also affected by residual blood or conductive loss in the middle ear. It should be noted that the patients had normal middle ear pressures revealed by the tympanometry before and after CI in our study, suggesting normal middle-ear conduction function. Therefore, the differences between pre- and post-operative caloric and VEMP tests may mainly reflect vestibular dysfunction resulting from CI surgery. However, we cannot completely rule out the effect of changes in thermal conductance between the external auditory canal and the labyrinth and those in the middle ear structure on the post-operative results. Moreover, there was no significant difference of the abnormal rates before and after CI in second-side CI-implanted children. This may be explained by the ceiling effect that the vestibular functions of these children already had been negatively affected by the first CI. The vHIT test showed no significant difference of the abnormal rates between pre- and post-implantation, consistent with previous findings (17). Jutila et al. reported that only 10% of patients had a reduction in VOR gain after CI (18). These findings suggest that damaged vestibular functions caused by CI may be better reflected by the caloric test compared with vHIT. Tsuji et al. analyzed the vestibular hair cells of 30 patients with Meniere's disease and found that the number of type II hair cells in patients with endolabyrinthine hydrops was significantly lower than that in the control group, whereas the numbers of type I hair cells were similar between the two groups (19). Type I hair cells (for high frequency) are located at the crest of the crista ampullaris and type II hair cells (for low frequency) are mainly located at the periphery of the crista ampullaris. Therefore, type II hair cells are closer to the perilymph space compared with type I hair cells and may be more vulnerable to endolabyrinthine hydrops. Similar to Meniere's disease, CI can also result in hydrops (14), possibly causing damage to type II hair cells. Our results are also consistent with the findings of Kuang et al. (20). Ibrahim et al. also concluded that CI surgery affects the results of caloric and VEMP tests, but not those of vHIT (17). These findings indicate that otolith and low-frequency SCC are more vulnerable to CI.

Many factors, such as age, affect the vestibular functions revealed by the VEMP test (21). With the increase of age, the hardness of the otolith structure will increase and the VEMP response rate will decrease (22). In the present study, we

Vertigo Questionnaires Before and After CI

The average DHI and PVSQ scores for three groups at three periods (before implantation, at day 3 after implantation and at day 30 after implantation) are shown in **Table 2**. The DHI scores for first-side CI-implanted adults ($p = 0.066$) and the PVSQ scores for first-side CI-implanted children ($p = 0.206$) were not significantly different among the three periods. However, we found significant differences of PVSQ scores for second-side CI-implanted children among the three periods ($p = 0.014$). The further tests showed that PVSQ score for second-side CI-implanted children at day 3 after implantation was significantly higher than that before implantation ($p = 0.021$) and that at day 30 after implantation ($p = 0.035$), respectively. There was no significant difference of the PVSQ scores between first- and second-side CI-implanted children before implantation ($p = 0.226$), at day 3 after implantation ($p = 0.411$), or at day 30 after implantation ($p = 0.664$).

A Spearman's correlation test further showed a significantly positive correlation between the DHI score and the UW of the caloric test at day 30 after implantation in first- side CI-implanted adults ($r = 0.619$, $p = 0.032$).

DISCUSSION

CI is the preferred method of treatment for patients with severe and profound SNHL to regain hearing and speech abilities, and it has been accepted universally. However, the post-operative complications have greatly concerned clinicians and

TABLE 2 | The pre- and post-implantation (at day 3 and at day 30) scores of Dizziness Handicap Inventory (DHI) for adults and Pediatric Vestibular Symptom Questionnaire (PVSQ) for children.

Group	N	Scores of DHI/PVSQ		
		Pre-implantation	post-implantation (at day 3)	post-implantation (at day 30)
First-side CI-implanted adults	12	18.83 ± 25.99	43.33 ± 32.84	16.00 ± 17.66
First-side CI-implanted children	8	7.00 ± 4.24	11.63 ± 4.72	8.00 ± 4.11
Second-side CI-implanted children	9	6.22 ± 9.27	14.11 ± 6.66*	8.22 ± 8.61 [#]

Data are expressed as mean ± standard deviation. * $p < 0.05$ vs. pre-implantation. [#] $p < 0.05$ vs. post-implantation (at day 3).

investigated whether the age at CI affects the vestibular functions by comparing the abnormal rates between adults and children who underwent first-side CI. The first-side CI-implanted adults and children showed similar abnormal rates and growth rates in all tests, indicating that CI damages the vestibular functions independent of age at CI. This finding may be explained by the acute injury. The abnormal rates in caloric and VEMP tests were very high within 1 month after CI (all $\geq 70\%$) and it was difficult to observe a difference between two groups. Xu et al. also reported that the response rates of oVEMP and cVEMP declined 1 month after CI (23). A follow-up study is needed to assess the long-term effects of CI on the age of implantation.

In our study, first-side CI-implanted adults and children showed abnormal vestibular functions before CI, suggesting that severe or profound hearing loss could be accompanied by vestibular dysfunction (24). Yu and Li reported that patients with sudden deafness could show vertigo (25). Meil et al. performed a series of SCC function tests before CI and found that the abnormal rate in the caloric test was 32% (26). These studies are consistent with our findings. The vestibular organs are adjacent to the cochlea anatomically, and the factors causing severe or profound hearing loss may also damage the structure and function of the vestibular systems.

With the increasing acceptance of CI, the advantages of bilateral hearing are becoming widely recognized. We found no significant difference of abnormal rates or growth rates 1 month after CI between first- and second-side CI-implanted children, indicating that unilateral and sequential bilateral CI have similar effects on vestibular functions. However, before CI, second-side CI-implanted children showed higher abnormal rates compared with first-side CI-implanted children as revealed by the VEMP test. In the present study, the second-side CI-implanted children received bilateral CI sequentially with a mean inter-implant interval of 4 years. Therefore, the vestibular dysfunction caused by unilateral (first) CI may last for a long time. The higher baseline (pre-implantation abnormal rate) in second-side CI-implanted children may possibly explain the smaller change from pre- to post-implantation (lower growth rate, not significant) compared with first-side CI-implanted children. Inconsistent with the VEMP findings, the caloric test showed no significant difference of abnormal rates not only between first- and second-side CI-implanted children before CI but also from pre- to post-implantation in the second-side CI-implanted children, suggesting that the caloric test results tend to normalize over time. Previous findings also suggest that CI may cause certain damage to the function of the saccule and utricle, revealed by

cVEMP and oVEMP, respectively, and this damage can last for a long time (23). It has been further reported that the saccule, which is close to the cochlea, is the structure most vulnerable to damage from CI as most patients with CI have reduced saccular function measured by cVEMP (27, 28). The next most vulnerable structure is the utricle because of its distance from the cochlea (29). The vestibular functions are greatly damaged by both unilateral and sequential bilateral CI.

The vertigo questionnaires demonstrated no significant difference of DHI and PVSQ scores between pre- and post-implantation for unilateral CI in both adults and children. In children with bilateral CI, PVSQ scores increased significantly at day 3 post-implantation but significantly decreased at day 30, which implies that the changes may be some acute reaction to anesthesia or to middle/inner ear trauma after the surgery. These subjective performances are quite different from the objective assessment outcomes from the caloric and VEMP tests. Abouzayd et al. also showed a poor correlation between the objective vestibular outcomes and subjective symptoms (30). Katsiari et al. found that dizziness rarely persisted beyond 1 month after CI (31). Therefore, accurate diagnosis and treatment of vestibular dysfunction only by objective questionnaires is a great challenge, especially for children. A new meta-analysis showed that only 1.7% of children in contrast to 31.3% of adults had post-operative vertigo (7). The incidence of post-operative vertigo in children is far lower than that in adults, possibly related to children's poor ability to express themselves. It is difficult for children to accurately and clearly describe the symptoms of vertigo. Therefore, it is necessary to make a comprehensive and systematic assessment for vestibular functions by combining objective with subjective methods. In our study, we found a significantly positive correlation between the DHI score and the results of the caloric test at day 30 after implantation in first-side CI-implanted adults but not in children. This finding implies that, compared with children, adults with vestibular dysfunction may suffer more from postoperative vertigo. Long-term impacts on vestibular function from CI surgery, as well as the chronic electrical stimulation to the cochlea, are still to be investigated.

CONCLUSIONS

In this study, we observed that vestibular function improved in the short term from day 3 to day 30 post-implantation. Increased abnormal rates from pre- to post-implantation in caloric and VEMP tests but not in vHIT suggest that otolith and low-frequency SCC are more vulnerable. No significant

difference of abnormal rates after CI between first-side CI-implanted adults and children or between first- and second-side CI-implanted children, further indicating that alterations of vestibular function resulting from CI surgery may be independent of age at CI and CI approach (unilateral or sequential bilateral).

DATA AVAILABILITY STATEMENT

The raw data supporting the conclusions of this article will be made available by the authors, without undue reservation.

ETHICS STATEMENT

The studies involving human participants were reviewed and approved by Anhui Provincial Hospital Ethics Committee. Written informed consent to participate in this study was provided by the participants' legal guardian/next of kin.

REFERENCES

1. Michelson RP. Electrical stimulation of the human cochlea. A preliminary report. *Arch Otolaryngol.* (1971) 93:317–23. doi: 10.1001/archotol.1971.00770060455016
2. Terry B, Kelt RE, Jeyakumar A. Delayed complications after cochlear implantation. *JAMA Otolaryngol Head Neck Surg.* (2015) 141:1012–7. doi: 10.1001/jamaoto.2015.2154
3. Sokolov M, Gordon KA, Polonenko M, Blaser SI, Papsin BC, Cushing SL. Vestibular and balance function is often impaired in children with profound unilateral sensorineural hearing loss. *Hear Res.* (2019) 372:52–61. doi: 10.1016/j.heares.2018.03.032
4. Buchman CA, Joy J, Hodges A, Telischi FF, Balkany TJ. Vestibular effects of cochlear implantation. *Laryngoscope.* (2004) 114(10 Pt 2 Suppl 103):1–22. doi: 10.1097/00005537-200410001-00001
5. Devroede B, Pauwels I, Le Bon SD, Monstrey J, Mansbach AL. Interest of vestibular evaluation in sequentially implanted children: preliminary results. *Eur Ann Otorhinolaryngol Head Neck Dis.* (2016) 133(Suppl. 1):S7–11. doi: 10.1016/j.anorl.2016.04.012
6. Cheng LJ, Soon SS, Wu DB, Ju H, Ng K. Cost-effectiveness analysis of bilateral cochlear implants for children with severe-to-profound sensorineural hearing loss in both ears in Singapore. *PLoS ONE.* (2019) 14:e0220439. doi: 10.1371/journal.pone.0220439
7. Hansel T, Gauger U, Bernhard N, Behzadi N, Romo Ventura ME, Hofmann V, et al. Meta-analysis of subjective complaints of vertigo and vestibular tests after cochlear implantation. *Laryngoscope.* (2018) 128:2110–23. doi: 10.1002/lary.27071
8. Murray D, Viani L, Garvan J, Murphy A, Vance R, Simoes-Franklin C, et al. Balance, gait and dizziness in adult cochlear implant users: a cross sectional study. *Cochlear Implants Int.* (2020) 21:46–52. doi: 10.1080/14670100.2019.1662978
9. Shepard NT, Jacobson GP. The caloric irrigation test. *Handb Clin Neurol.* (2016) 137:119–31. doi: 10.1016/B978-0-444-63437-5.00009-1
10. Imai T, Okumura T, Ohta Y, Oshima K, Sato T, Kamakura T, et al. Effects of cochlear implants on otolith function as evaluated by vestibulo-ocular reflex and vestibular evoked myogenic potentials. *Auris Nasus Larynx.* (2019) 46:836–43. doi: 10.1016/j.anl.2019.03.011

AUTHOR CONTRIBUTIONS

RG, JinS, XG, and JiaS conceived and designed the experiments. RG, YW, SW, BZ, and XG recruited participants and performed data acquisition. RG, YW, JinS, XG, and JiaS analyzed the data. All authors wrote the paper and approved the final article.

FUNDING

This work was supported by Natural Science Foundation of Anhui Province (Grant nos. 2008085QH429, 1808085MH250), the Key Research and Development Program of Anhui Province (Grant nos. 201904a07020087, 201904a07020084), the Fundamental Research Funds for the Central Universities (Grant no. WK9110000080), and Open research Fund of CAS Key Laboratory of Brain Function and Diseases (Grant no. 2019-4).

ACKNOWLEDGMENTS

The authors thank all participants for their participation in this research.

11. Dagkiran M, Tuncer U, Surmelioglu O, Tarkan O, Ozdemir S, Cetik F, et al. How does cochlear implantation affect five vestibular end-organ functions and dizziness? *Auris Nasus Larynx.* (2019) 46:178–85. doi: 10.1016/j.anl.2018.07.004
12. Pavlou M, Whitney S, Alkathiry AA, Huett M, Luxon LM, Raglan E, et al. The pediatric vestibular symptom questionnaire: a validation study. *J Pediatr.* (2016) 168:171–7 e1. doi: 10.1016/j.jpeds.2015.09.075
13. Piker EG, Riska K, Garrison D, Kaylie DM. Vestibular function after cochlear implantation: a test battery and case-by-case approach. *Laryngoscope Investig Otolaryngol.* (2020) 5:560–71. doi: 10.1002/lio.2.413
14. Handzel O, Burgess BJ, Nadol JB Jr. Histopathology of the peripheral vestibular system after cochlear implantation in the human. *Otol Neurotol.* (2006) 27:57–64. doi: 10.1097/01.mao.0000188658.36327.8f
15. Stultiens JJA, Kieft HW, Mylanus EAM, Pennings RJE, Terwoert L, Beynon AJ. Impact of cochlear implantation on the function of the three semicircular canals. *Int J Audiol.* (2020) 59:843–9. doi: 10.1080/14992027.2020.1768310
16. Proctor LR, Dix RC. New approach to caloric stimulation of the vestibular receptor. *Ann Otol Rhinol Laryngol.* (1975) 84(5 Pt 1):683–94. doi: 10.1177/000348947508400520
17. Ibrahim I, da Silva SD, Segal B, Zeitouni A. Effect of cochlear implant surgery on vestibular function: meta-analysis study. *J Otolaryngol Head Neck Surg.* (2017) 46:44. doi: 10.1186/s40463-017-0224-0
18. Jutila T, Aalto H, Hirvonen TP. Cochlear implantation rarely alters horizontal vestibulo-ocular reflex in motorized head impulse test. *Otol Neurotol.* (2013) 34:48–52. doi: 10.1097/MAO.0b013e318277a430
19. Tsuji K, Velazquez-Villasenor L, Rauch SD, Glynn RJ, Wall C 3rd, Merchant SN. Temporal bone studies of the human peripheral vestibular system. Meniere's disease. *Ann Otol Rhinol Laryngol Suppl.* (2000) 181:26–31. doi: 10.1177/00034894001090S505
20. Kuang H, Haversat HH, Michaelides EM. Impairment of Caloric Function After Cochlear Implantation. *J Speech Lang Hear Res.* (2015) 58:1387–95. doi: 10.1044/2015_JSLHR-H-15-0010
21. Tseng CL, Chou CH, Young YH. Aging effect on the ocular vestibular-evoked myogenic potentials. *Otol Neurotol.* (2010) 31:959–63. doi: 10.1097/MAO.0b013e3181e8fb1a
22. Louza J, Mertes L, Braun T, Gurkov R, Krause E. Influence of insertion depth in cochlear implantation on vertigo symptoms and vestibular function. *Am J Otolaryngol.* (2015) 36:254–8. doi: 10.1016/j.amjoto.2014.11.007

23. Xu XD, Zhang XT, Zhang Q, Hu J, Chen YF, Xu M. Ocular and cervical vestibular-evoked myogenic potentials in children with cochlear implant. *Clin Neurophysiol.* (2015) 126:1624–31. doi: 10.1016/j.clinph.2014.10.216
24. West N, Sass H, Klokker M, Caye-Thomasen P. Functional loss after meningitis-evaluation of vestibular function in patients with postmeningitic hearing loss. *Front Neurol.* (2020) 11:681. doi: 10.3389/fneur.2020.00681
25. Yu H, Li H. Vestibular dysfunctions in sudden sensorineural hearing loss: a systematic review and meta-analysis. *Front Neurol.* (2018) 9:45. doi: 10.3389/fneur.2018.00045
26. Meli A, Aud BM, Aud ST, Aud RG, Cristofari E. Vestibular function after cochlear implant surgery. *Cochlear Implants Int.* (2016) 17:151–7. doi: 10.1179/1754762815Y.0000000014
27. Krause E, Louza JP, Wechtenbruch J, Hempel JM, Rader T, Gurkov R. Incidence and quality of vertigo symptoms after cochlear implantation. *J Laryngol Otol.* (2009) 123:278–82. doi: 10.1017/S002221510800296X
28. Obeidat FS, Bell SL, Julie E. An exploration of vestibular function pre and post unilateral cochlear implantation. *Cochlear Implants Int.* (2020) 21:281–91. doi: 10.1080/14670100.2020.1774716
29. Krause E, Louza JP, Wechtenbruch J, Gurkov R. Influence of cochlear implantation on peripheral vestibular receptor function. *Otolaryngol Head Neck Surg.* (2010) 142:809–13. doi: 10.1016/j.otohns.2010.01.017
30. Abouzayd M, Smith PF, Moreau S, Hitier M. What vestibular tests to choose in symptomatic patients after a cochlear implant? A systematic review and meta-analysis. *Eur Arch Otorhinolaryngol.* (2017) 274:53–63. doi: 10.1007/s00405-016-4007-4
31. Kubo T, Yamamoto K, Iwaki T, Doi K, Tamura M. Different forms of dizziness occurring after cochlear implant. *Eur Arch Otorhinolaryngol.* (2001) 258:9–12. doi: 10.1007/PL00007519

Conflict of Interest: The authors declare that the research was conducted in the absence of any commercial or financial relationships that could be construed as a potential conflict of interest.

Copyright © 2021 Guan, Wang, Wu, Zhang, Sun, Guo and Sun. This is an open-access article distributed under the terms of the Creative Commons Attribution License (CC BY). The use, distribution or reproduction in other forums is permitted, provided the original author(s) and the copyright owner(s) are credited and that the original publication in this journal is cited, in accordance with accepted academic practice. No use, distribution or reproduction is permitted which does not comply with these terms.